

Please address all correspondence
To Government Statistician
In reply, please quote the file reference



File Ref: CPI 07/10

GOVERNMENT OF SAMOA

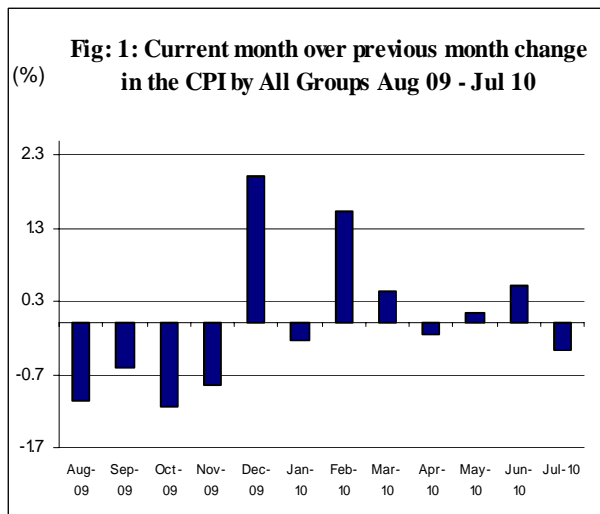
SAMOA BUREAU OF STATISTICS

CONSUMER PRICE INDEX - July 2010

(Based Period: Average Prices March 2004 = 100)

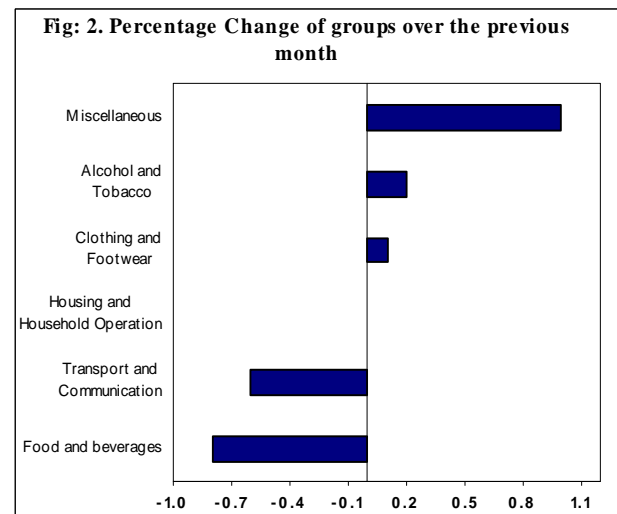
SUMMARY

The All Items Consumer Price Index for the month of July 2010 recorded a decrease of 0.4 percent when compared to the previous month, and an increase of 0.2 percent when compared to the same month of last year. Depicted in Fig 1 are the month to month changes in the Consumer Price Index by all groups from August 09 to July 10.



The 0.4 percent decrease in the Overall Index is attributed mainly to a decrease of 0.8 percent in the Food group index. The

Transport and Communication group also registered a decrease of 0.6 percent, while Housing and Household Operation group index recorded no change from the previous month. On the contrary, Increases were recorded for other groups namely Miscellaneous (1.0%), Alcohol and Tobacco (0.2%) and a slight increase of 0.1 percent in the Clothing and Footwear group index. Graphically presented in Fig 2 is the July 2010 percentage change of groups over June 2010.



The 0.8 percent decrease in the Food group was primarily due to lower prices recorded for canned fish (early dawn natural oil), fresh fish (large, piece, string), taamu, breadfruit and some vegetables namely chinese cabbages and green beans.



Lower prices recorded for fuel (petrol, diesel) and return air fares (Fagalii-Pago) has contributed to a decrease of 0.6 percent in the Transport and Communication group index.



The 1.0 percent increase in the Miscellaneous group index is mainly due to higher prices recorded for cinema admission (adult ticket) and Diapers (huggies)



The 0.2 percent increase in the Alcohol and Tobacco group index is contributed from higher prices recorded for Ava Samoa.



The local component registered a decrease of 1.0 percent due to lower prices recorded for fresh fish (piece, string, large), taamu, breadfruit, Chinese cabbage, green beans and airline fares (Fagalii-Pago).

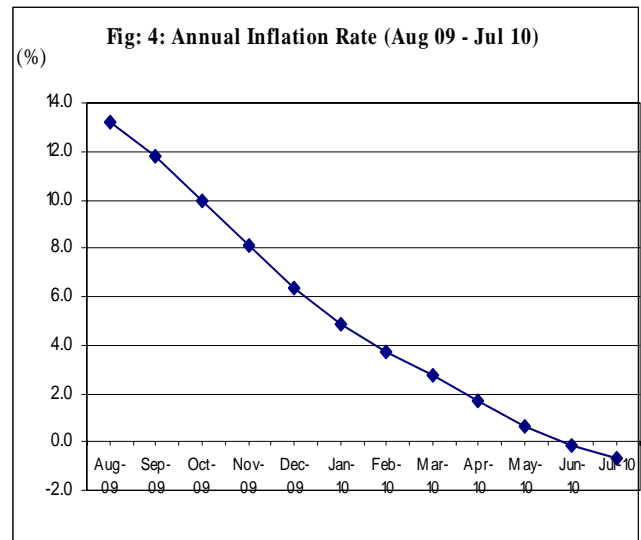


Higher prices recorded for rice, sugar and turkey wings are the main contributor to the 0.5 percent increase in the imported component.



The All Items Underlying Index for July 2010 registered an increase of 0.9 percent when compared to June 2010, and an increase of 1.3 percent when compared to July 2009. The 0.9 percent increase in the Overall Underlying Index is attributed to an increase of 1.0 percent in the imported component. The local component also increased by 0.4 percent.

The twelve months ending July 2010 compared to the twelve months ending July 2009 shows a decrease of 0.7 percent, as illustrated below in Fig 4.



The attached Tables and Graphs provide the user with more detailed analysis.

Muagututia S Reupena.

GOVERNMENT STATISTICIAN