

Please address all correspondence  
To Government Statistician  
In reply, please quote the file reference



File Ref: CPI 07/10

GOVERNMENT OF SAMOA

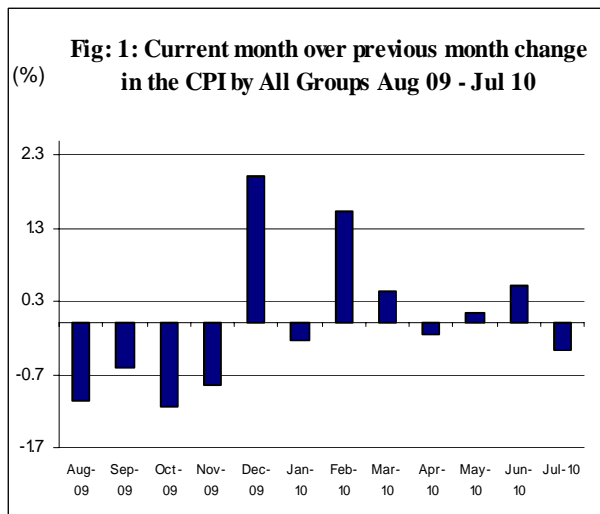
## SAMOA BUREAU OF STATISTICS

### CONSUMER PRICE INDEX - July 2010

(Based Period: Average Prices March 2004 = 100)

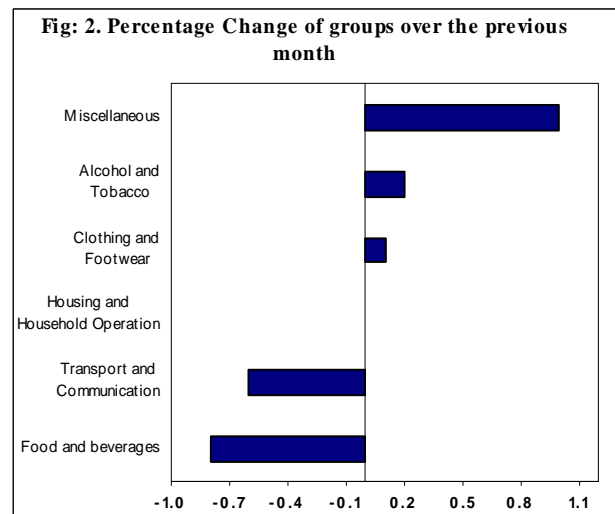
#### SUMMARY

The All Items Consumer Price Index for the month of July 2010 recorded a decrease of 0.4 percent when compared to the previous month, and an increase of 0.2 percent when compared to the same month of last year. Depicted in Fig 1 are the month to month changes in the Consumer Price Index by all groups from August 09 to July 10.



The 0.4 percent decrease in the Overall Index is attributed mainly to a decrease of 0.8 percent in the Food group index. The

Transport and Communication group also registered a decrease of 0.6 percent, while Housing and Household Operation group index recorded no change from the previous month. On the contrary, Increases were recorded for other groups namely Miscellaneous (1.0%), Alcohol and Tobacco (0.2%) and a slight increase of 0.1 percent in the Clothing and Footwear group index. Graphically presented in Fig 2 is the July 2010 percentage change of groups over June 2010.



The 0.8 percent decrease in the Food group was primarily due to lower prices recorded for canned fish (early dawn natural oil), fresh fish (large, piece, string), taamu, breadfruit and some vegetables namely chinese cabbages and green beans.



Lower prices recorded for fuel (petrol, diesel) and return air fares (Fagalii-Pago) has contributed to a decrease of 0.6 percent in the Transport and Communication group index.



The 1.0 percent increase in the Miscellaneous group index is mainly due to higher prices recorded for cinema admission (adult ticket) and Diapers (huggies)



The 0.2 percent increase in the Alcohol and Tobacco group index is contributed from higher prices recorded for Ava Samoa.



The local component registered a decrease of 1.0 percent due to lower prices recorded for fresh fish (piece, string, large), taamu, breadfruit, Chinese cabbage, green beans and airline fares (Fagalii-Pago).

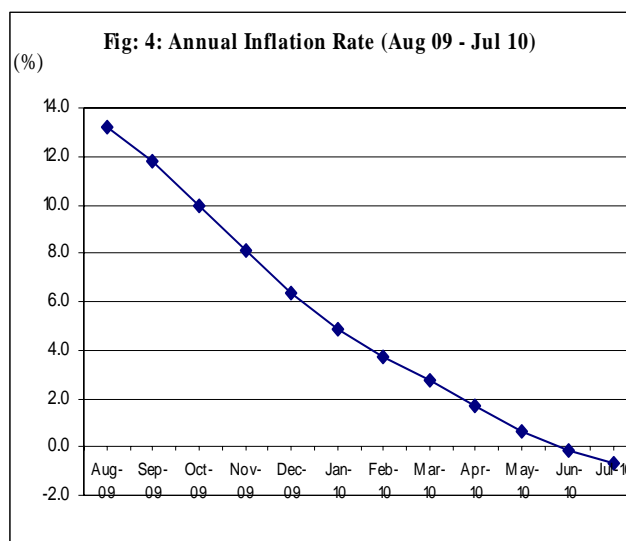


Higher prices recorded for rice, sugar and turkey wings are the main contributor to the 0.5 percent increase in the imported component.



The All Items Underlying Index for July 2010 registered an increase of 0.9 percent when compared to June 2010, and an increase of 1.3 percent when compared to July 2009. The 0.9 percent increase in the Overall Underlying Index is attributed to an increase of 1.0 percent in the imported component. The local component also increased by 0.4 percent.

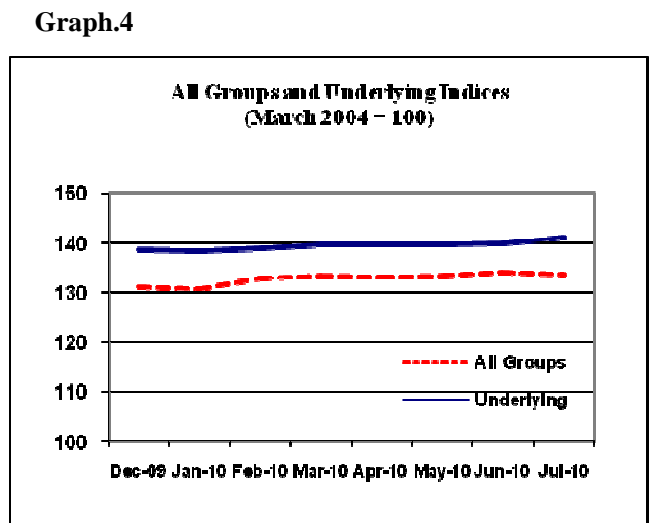
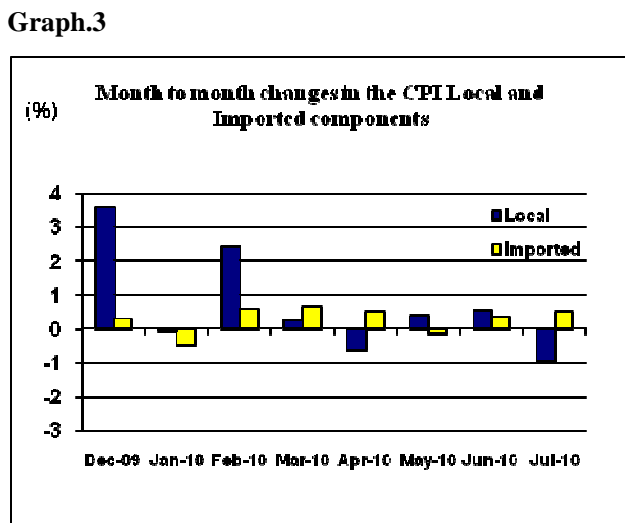
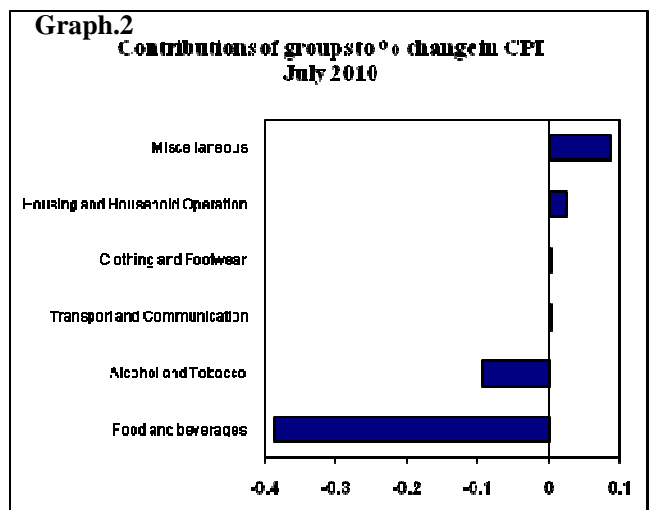
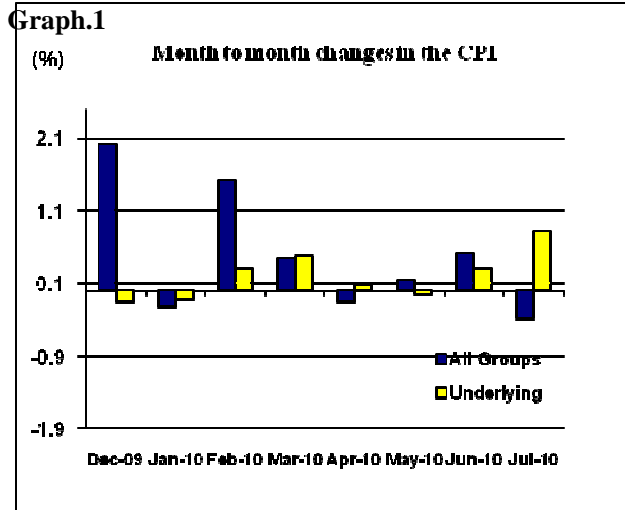
The twelve months ending July 2010 compared to the twelve months ending July 2009 shows a decrease of 0.7 percent, as illustrated below in Fig 4.



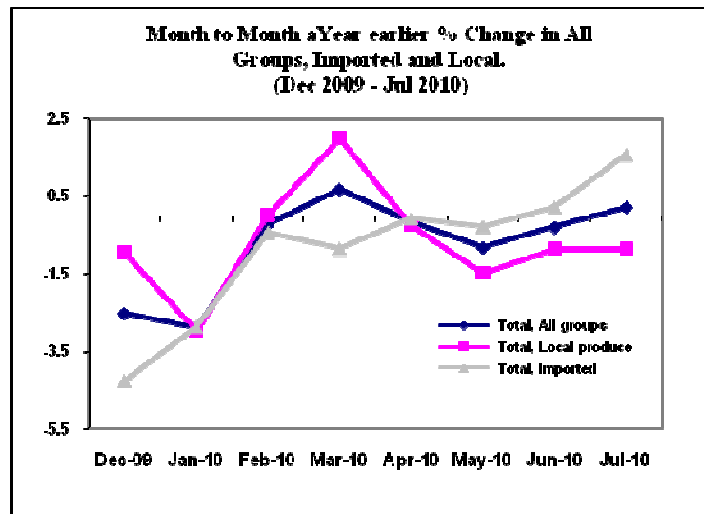
The attached Tables and Graphs provide the user with more detailed analysis.

Muagututia S Reupena.

**GOVERNMENT STATISTICIAN**



**Graph 5**



**Table 1. CONSUMER PRICE INDEX.**

**(Base Period : Average Prices March 2004 = 100)**

Group	All Items	Food	Clothing and Footwear	Housing and Household Operations	Transport and Communications	Alcohol and Tobacco	Miscellaneous
<i>Weights</i>	<b>1000</b>	<b>503</b>	<b>20</b>	<b>111</b>	<b>144</b>	<b>122</b>	<b>100</b>
2006	105.7	103.9	85.0	111.0	113.5	104.8	102.8
2007	111.6	111.9	82.3	117.1	109.7	117.4	105.2
2008	124.5	127.7	83.9	128.8	124.7	122.9	113.4
2009	132.4	140.7	89.0	130.5	126.8	127.2	115.6
2009							
July	133.3	142.3	88.7	129.1	127.5	127.9	116.0
August	131.9	140.3	88.7	129.5	126.3	126.3	116.1
September	131.1	138.2	89.3	129.0	128.0	126.3	116.1
October	129.6	135.4	89.5	129.3	127.4	126.3	116.1
November	128.5	133.5	89.4	128.8	126.8	127.2	115.7
December	131.1	138.4	89.7	128.7	128.1	126.9	115.2
2010							
January	130.8	136.4	89.9	130.9	127.8	126.9	119.2
February	132.8	140.0	90.3	129.8	128.5	128.8	119.5
March	133.4	139.7	90.3	133.2	129.4	130.1	119.7
April	133.2	138.2	90.5	133.7	130.8	132.3	120.7
May	133.4	138.2	92.2	135.5	130.4	132.1	120.6
June	134.1	139.3	93.6	135.9	130.9	132.1	120.7
July (a)	133.6	138.2	93.7	135.9	130.1	132.3	121.9
<b><u>Percentage Change (a)</u></b>							
Jul 2010 over Jun 2010	-0.4	-0.8	0.1	0.0	-0.6	0.2	1.0
Jul 2010 over Jul 2009	0.2	-2.9	5.6	5.3	2.0	3.4	5.1
<b>ALL ITEMS UNDERLYING INDEX</b>							
Group	All Items	Food	Clothing and Footwear	Housing and Household Operations	Transport and Communications	Alcohol and Tobacco	Miscellaneous
<i>Weights</i>	<b>514</b>	<b>387</b>	<b>20</b>	<b>55</b>	<b>4</b>	<b>n.a.</b>	<b>48</b>
2006	106.3	107.8	85.0	104.3	107.3		105.8
2007	113.6	116.4	82.3	107.5	117.7		110.7
2008	127.7	133.4	83.9	112.8	141.8		116.1
2009	140.1	148.7	89.1	117.0	148.8		118.4
2009							
July	139.4	147.7	88.7	117.4	153.2		118.2

August	140.0	148.5	88.7	117.3	153.2	118.3
September	140.6	149.3	89.3	117.0	151.5	118.3
October	139.3	147.7	89.5	115.9	151.5	118.3
November	138.8	147.2	89.4	115.8	149.7	117.4
December	138.6	147.1	89.7	115.6	149.4	116.4
2010						
January	138.5	146.5	89.9	115.4	149.4	119.9
February	138.9	146.9	90.3	115.8	152.9	120.5
March	139.6	147.8	90.3	115.4	151.7	121.0
April	139.7	147.8	90.5	114.6	153.8	122.9
May	139.6	147.5	92.2	114.8	154.4	122.9
June	140.0	148.0	93.6	114.9	154.2	123.1
July (a)	141.2	149.5	93.7	115.1	150.7	122.8
<b><u>Percentage Change (a)</u></b>						
Jul 2010 over Jun 2010	0.9	1.0	0.1	0.2	-2.3	-0.2
Jul 2010 over Jul 2009	1.3	1.2	5.6	-2.0	-1.6	3.9

(a): Provisional figures

Note: n.a. Not applicable

**Table 2. AVERAGE RETAIL PRICES OF SELECTED COMMODITIES**

Commodities	Unit	2009			2010		
		May	June	July	May	June	July (a)
1 Flour	1 lb	1.39	1.48	1.42	1.33	1.24	1.22
2 Rice	1 lb	2.22	2.22	2.02	1.63	1.71	1.77
3 Salt	1 lb	0.71	0.67	0.65	0.72	0.74	0.73
4 Sugar (Brown)	1 lb	1.10	1.10	1.10	1.33	1.29	1.39
5 Taamu	1 lb	2.15	2.14	1.96	1.19	1.17	0.93
6 Breadfruit	1 lb	0.78	0.62	0.47	0.58	0.66	0.38
7 Potatoes	1 lb	1.29	1.33	1.33	1.31	1.30	1.31
8 Onions	1 lb	1.29	1.19	1.22	1.24	1.36	1.45
9 Taro	1 lb	1.70	1.78	1.83	1.03	1.18	1.29
10 Yam	1 lb	1.44	1.82	1.65	1.32	1.31	1.37
11 Chinese Cabbage	1 lb	3.29	2.71	1.59	2.49	2.69	1.92
12 Head Cabbage	1 lb	5.28	3.46	2.89	3.61	3.23	3.30
13 Cucumbers	1 lb	1.71	1.72	1.48	1.84	1.33	1.06
14 Pumpkins	1 lb	1.17	1.26	1.15	1.54	1.32	1.25
15 Green Beans	1 lb	4.39	7.45	5.03	3.47	4.97	3.65
16 Water Cress	1 lb	3.93	4.95	3.73	4.29	4.04	4.93
17 Tomatoes	1 lb	5.88	5.14	4.36	6.56	7.00	6.88
18 Taro leaves	1 lb	3.06	3.15	3.11	3.35	3.52	3.21
19 Bananas	1 lb	0.74	0.71	0.64	0.49	0.52	0.51
20 Coconuts	1 lb	0.24	0.22	0.21	0.24	0.24	0.23
21 String Fish	1 lb	4.26	3.88	4.59	3.56	3.55	3.30
22 Large Fish	1lb	5.93	6.35	7.56	4.43	6.67	5.37
23 Fish (piece)	1lb	5.06	4.87	5.79	5.16	4.15	3.38
24 Canned fish (Early Dawn Natual Oil)	15 oz	4.38	4.39	4.54	4.25	4.00	3.74
25 Mutton Flaps	1 lb	4.36	4.37	4.52	5.06	4.97	4.95
26 Chicken leg quarters	1 lb	2.27	2.26	2.26	1.77	1.87	1.89
27 Turkey Wings	1 lb	2.94	2.94	2.94	3.35	3.35	3.52
28 Pig Trotter	1 lb	2.88	2.91	2.91	3.35	3.38	3.43
29 Eggs	doz	6.83	6.63	6.43	6.10	6.59	6.44
30 Samoan kava	packet	7.88	7.88	7.88	8.38	8.38	8.63
31 T-shirt (children)	32size	7.36	7.61	7.94	8.50	9.25	9.25
32 le Solosolo (cotton print 42 inch)	2yds	6.15	6.15	5.92	6.12	6.27	6.27
33 roofing iron ( Zincalume)	12 ft	54.48	60.78	60.78	59.40	59.40	61.20
34 Air Fares ( Fagalii-Pago)	return trip	291.86	291.86	291.86	324.23	324.23	315.50
35 Electricity	kwh	0.80	0.82	0.80	0.93	0.93	0.94
36 Kerosene	1 ltr	2.12	2.07	2.02	2.26	2.33	2.21

37	Tea Towel (long stripes)	each	2.30	2.30	2.20	2.40	2.73	2.40
38	Cinema Admission	adult ticket	6.00	8.00	8.00	8.00	8.00	10.00
39	Petrol (unleaded)	1 ltr	2.36	2.23	2.32	2.52	2.51	2.39
40	Diesel	1 ltr	2.28	2.16	2.23	2.49	2.55	2.43
41	Car Tyre ( Radial // imported)	205/70R(14)	175.00	242.50	252.50	254.00	254.00	226.50
42	Car Battery (12 volt)	N50	263.67	253.67	258.33	264.33	263.33	263.33
43	Diapers (Huggies 16kg & over)	24 package	34.84	34.84	34.84	36.06	36.48	36.89

(a) : Provisional figures

**Table 3. IMPORTED GOODS COMPONENT OF THE CONSUMER PRICE INDEX**

**(Base Period : Average Prices March 2004 = 100)**

Group	All Items	Food	Clothing and Footwear	Housing and Household Operations	Transport and Communications	Alcohol and Tobacco	Miscellaneous
<i>Weights</i>	<b>437</b>	<b>288</b>	<b>20</b>	<b>48</b>	<b>30</b>	<b>17</b>	<b>35</b>
2006	109.2	107.3	85.0	113.9	140.1	104.8	108.0
2007	116.7	116.7	82.3	115.7	145.2	115.2	114.4
2008	133.3	133.2	83.9	129.5	194.6	119.3	122.0
2009	140.6	148.2	89.0	123.5	160.7	121.9	122.8
2009							
July	139.9	146.9	88.7	122.5	164.0	123.0	122.9
August	140.0	148.0	88.7	121.7	156.8	123.0	123.0
September	141.3	149.0	89.3	122.1	164.6	123.0	123.0
October	139.7	146.9	89.5	120.8	162.1	123.0	123.0
November	139.0	146.4	89.4	120.7	159.0	124.3	121.8
December	139.4	146.2	89.7	120.1	170.1	122.3	120.5
2010							
January	138.7	145.3	89.9	120.7	162.6	122.3	123.9
February	139.5	145.4	90.3	121.5	167.3	128.2	124.7
March	140.4	146.4	90.3	121.3	171.3	128.2	125.5
April	141.1	146.4	90.5	121.7	177.8	128.6	128.1
May	140.9	145.9	92.2	122.5	176.0	128.6	128.1
June	141.4	146.5	93.6	123.6	176.2	128.6	128.3
July (a)	142.1	148.3	93.7	122.3	169.7	128.6	127.9
September (a)	109.5	106.7	83.9	114.9	152.2	103.7	106.1
<b><u>Percentage Change (a)</u></b>							
Jul 2010 over Jun 2010	0.5	1.2	0.1	-1.1	-3.7	0.0	-0.3
Jul 2010 over Jul 2009	1.6	1.0	5.6	-0.2	3.5	4.6	4.1
<b>IMPORTED ITEMS UNDERLYING INDEX</b>							
Group	All Items	Food	Clothing and Footwear	Housing and Household Operations	Transport and Communications	Alcohol and Tobacco	Miscellaneous
<i>Weights</i>	<b>385</b>	<b>288</b>	<b>20</b>	<b>40</b>	<b>2</b>	<i>n.a.</i>	<b>35</b>
2006	105.9	107.3	85.0	104.3	107.8		108.0
2007	113.7	116.7	82.3	106.8	113.1		114.4
2008	127.5	133.2	83.9	112.1	154.4		121.9
2009	139.7	148.2	89.1	117.6	164.6		122.8
2009							
July	138.8	146.9	88.7	118.0	173.3		122.9

August	139.5	148.0	88.7	117.5	173.3	123.0
September	140.3	149.0	89.3	117.5	169.8	123.0
October	138.7	146.9	89.5	116.2	169.8	123.0
November	138.1	146.4	89.4	116.1	166.0	121.8
December	137.8	146.2	89.7	115.5	165.4	120.5
2010						
January	137.4	145.3	89.9	115.1	165.4	123.9
February	137.6	145.4	90.3	115.6	172.5	124.7
March	138.4	146.4	90.3	115.1	170.0	125.5
April	138.6	146.4	90.5	114.4	174.3	128.1
May	138.4	145.9	92.2	114.8	175.7	128.1
June	138.9	146.5	93.6	115.2	175.3	128.3
July (a)	140.2	148.3	93.7	115.2	168.1	127.9
<b><u>Percentage Change (a)</u></b>						
Jul 2010 over Jun 2010	1.0	1.3	0.0	0.0	-4.1	-0.3
Jul 2010 over Jul 2009	1.0	0.9	5.6	-2.4	-3.0	4.1

(a): Provisional figures

Note: n.a. Not applicable

**Table 4. LOCAL GOODS COMPONENT OF THE CONSUMER PRICE INDEX****(Base Period : Average Prices March 2004 = 100)**

Group	All Items	Food	Housing and Household Operations	Transport and Communications	Alcohol and Tobacco	Miscellaneous
<i>Weights</i>	<b>563</b>	<b>215</b>	<b>64</b>	<b>114</b>	<b>105</b>	<b>65</b>
2006	103.0	99.4	108.9	106.5	104.8	100.0
2007	107.6	105.5	118.1	100.4	117.8	100.3
2008	117.6	120.3	128.2	106.4	123.5	108.8
2009	126.0	130.6	135.9	117.9	128.1	111.8
2009						
July	128.1	136.2	134.1	117.9	128.7	112.4
August	125.7	130.2	135.3	118.3	126.9	112.4
September	123.1	123.8	134.1	118.3	126.9	112.4
October	121.8	119.9	135.8	118.3	126.9	112.4
November	120.4	116.2	134.9	118.3	127.7	112.4
December	124.7	128.0	135.1	117.1	127.7	112.4
2010						
January	124.6	124.6	138.6	118.6	127.7	116.7
February	127.6	132.8	136.1	118.3	128.9	116.7
March	127.9	130.9	142.2	118.3	130.4	116.7
April	127.1	127.4	142.8	118.4	132.9	116.7
May	127.6	128.0	145.3	118.4	132.6	116.7
June	128.3	129.7	145.2	119.0	132.6	116.7
July (a)	127.0	124.8	146.1	119.7	132.9	118.6
<b><i>Percentage Change (a)</i></b>						
Jul 2010 over Jun 2010	-1.0	-3.8	0.6	0.6	0.2	1.6
Jul 2010 over Jul 2009	-0.9	-8.4	8.9	1.5	3.3	5.5
<b>LOCAL ITEMS UNDERLYING INDEX</b>						
Group	All Items	Food	Housing and Household Operations	Transport and Communications	Alcohol and Tobacco	Miscellaneous
<i>Weights</i>	<b>129</b>	<b>99</b>	<b>15</b>	<b>2</b>	<i>n.a.</i>	<b>13</b>
2006	107.7	109.3	104.3	106.8		100.0
2007	113.5	115.5	109.6	122.0		101.3
2008	128.3	134.0	109.6	122.0		101.3
2008	141.3	150.0	115.5	133.8		106.8

2009					
July	141.1	149.9	115.5	134.3	105.8
August	141.4	150.1	116.8	134.3	105.8
September	141.5	150.3	115.6	134.3	105.8
October	141.2	150.1	115.2	134.3	105.8
November	141.0	149.8	115.0	134.3	105.8
December	141.1	149.8	115.8	134.3	105.8
2010					
January	141.7	150.1	116.1	134.3	109.4
February	142.6	151.2	116.5	134.3	109.4
March	143.1	151.8	116.4	134.3	109.4
April	142.9	151.8	115.2	134.3	109.4
May	143.2	152.3	114.8	134.3	109.4
June	143.3	152.4	114.3	134.3	109.4
July (a)	143.9	153.1	114.7	134.3	109.4
August	143.3	152.4	114.3	134.3	109.4
<b><u>Percentage Change (a)</u></b>					
Jul 2010					
over	0.4	0.5	0.3	0.0	0.0
Jun 2010					
Jun 2010					
over	2.0	2.1	-0.7	0.0	3.4
Jun 2009					

(a): Provisional figures

Note: n.a. Not applicable