

Please address all correspondence
To Government Statistician
In reply, please quote the file reference



File Ref: CPI 06/10

GOVERNMENT OF SAMOA

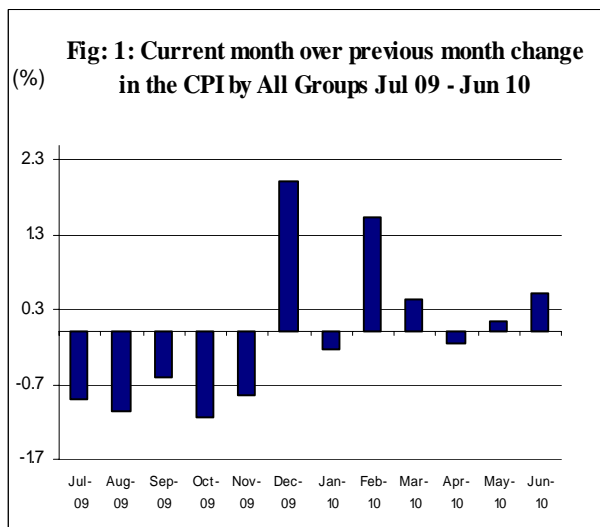
SAMOA BUREAU OF STATISTICS

CONSUMER PRICE INDEX - June 2010

(Based Period: Average Prices March 2004 = 100)

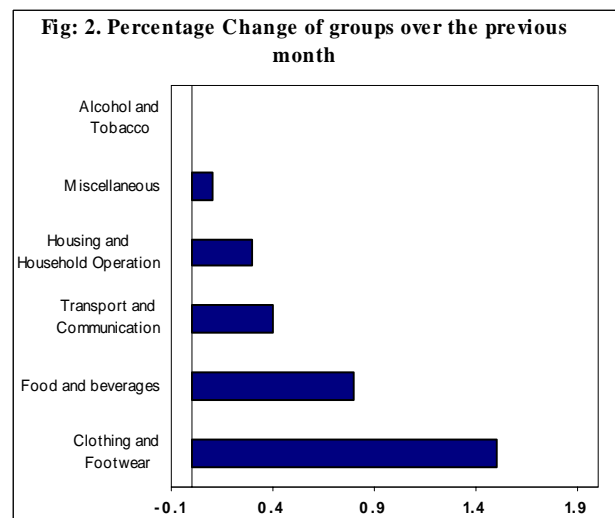
SUMMARY

The All Items Consumer Price Index for the month of June 2010 recorded an increase of 0.5 percent when compared to the previous month, and a decrease of 0.3 percent when compared to the same month of last year. Depicted in Fig 1 are the month to month changes in the Consumer Price Index by all groups from July 09 to June 10.



The 0.5 percent increase in the Overall Index is attributed mainly to an increase of 0.8 percent in the Food group index.

Increases were also recorded for other groups namely Clothing and Footwear (1.5%), Transport and Communication (0.4%), Housing and Household Operation (0.3%) and a slight increase of 0.1 percent in the Miscellaneous group index. The Alcohol and Tobacco group recorded no change from the previous month. Graphically presented in Fig 2 is the June 2010 percentage change of groups over May 2010.



The 0.8 percent increase in the Food group was primarily due to higher prices recorded for rice, chicken leg quarter, eggs, fresh fish (large) and some vegetables namely tomatoes, chinese cabbages and green beans.



Increased prices recorded for children T-shirt, bra (woman) and ie solosolo (cotton print) reflected in the 1.5 percent increase in the Clothing and Footwear group index.



Increased prices recorded for airline fares (Apia-Auckland-Apia) has contributed to the 0.4 percent increase in the Transport and Communication group index.



Higher prices recorded for kerosene and tea towel were the main contributor to the 0.3 percent increase in the Housing and Household Operation group index.



The local component registered an increase of 0.4 percent due to higher prices recorded for fresh fish (large), tomatoes, chinese cabbage, green bean and airline fares (Apia-Auckland-Apia).

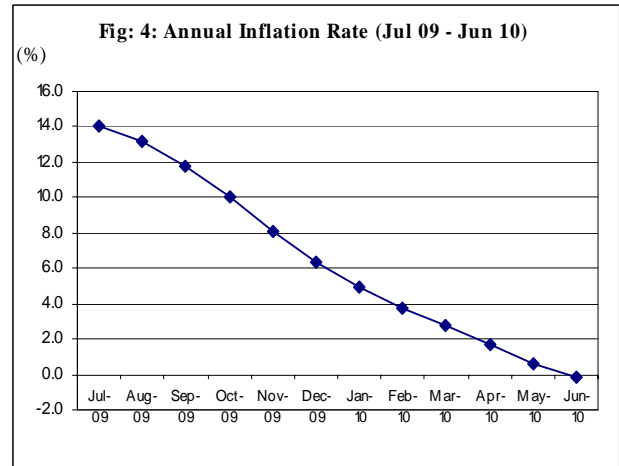


Higher prices recorded for rice and kerosene are the main contributor to the 0.5 percent increase in the imported component.



The All Items Underlying Index for June 2010 registered an increase of 0.3 percent when compared to May 2010, and a decrease of 0.6 percent when compared to June 2009. The 0.3 percent increase in the Overall Underlying Index is attributed to an increase of 0.4 percent in the imported component. The local component also increased by 0.2 percent.

The twelve months ending June 2010 compared to the twelve months ending June 2009 shows a decrease of 0.2 percent, as illustrated below in Fig 4.



The attached Tables and Graphs provide the user with more detailed analysis.

Tapua'i L Fiti.

ACTING: GOVERNMENT STATISTICIAN

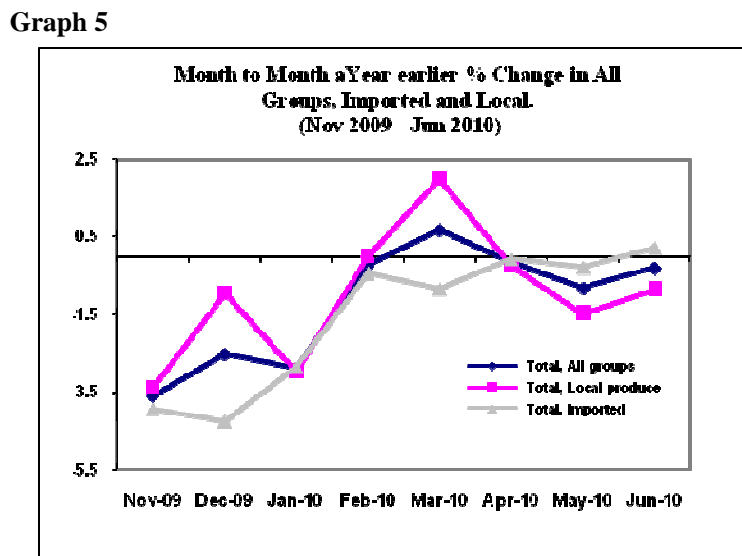
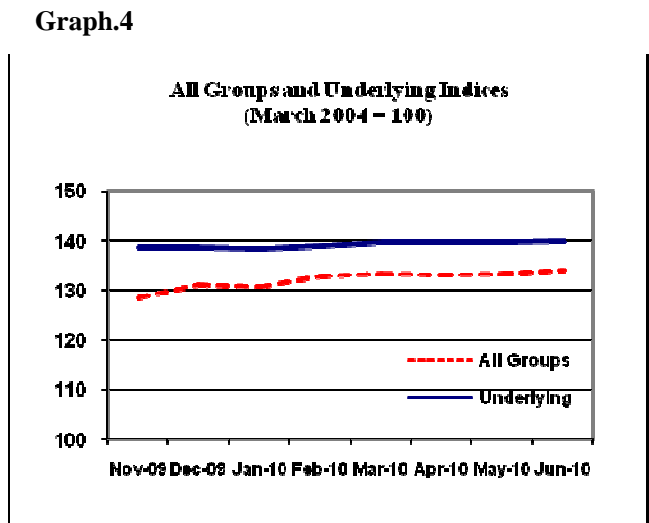
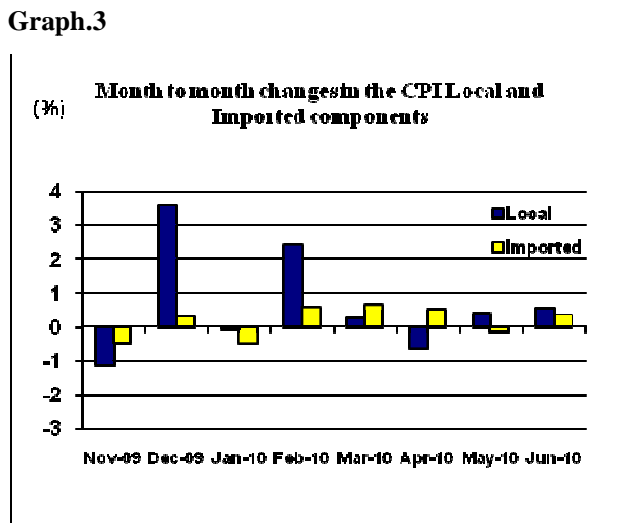
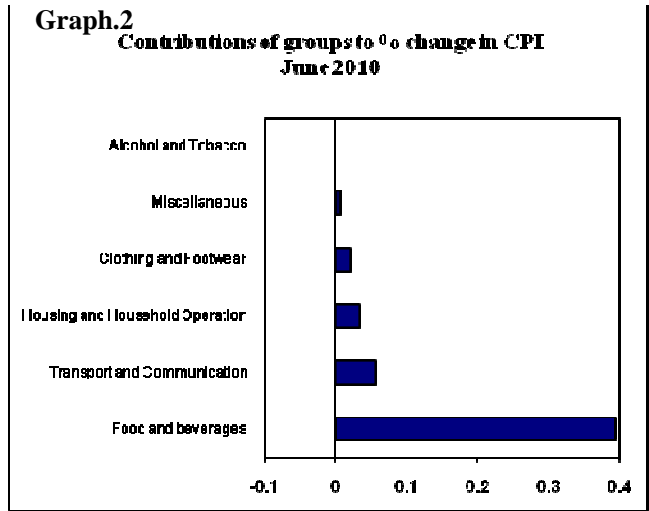
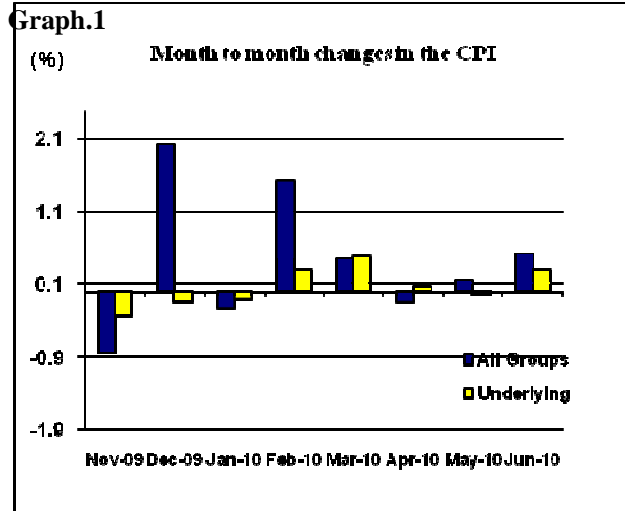


Table 1. CONSUMER PRICE INDEX.

(Base Period : Average Prices March 2004 = 100)

Group	All Items	Food	Clothing and Footwear	Housing and Household Operations	Transport and Communications	Alcohol and Tobacco	Miscellaneous		
<i>Weights</i>	1000	503	20	111	144	122	100		
2006	105.7	103.9	85.0	111.0	113.5	104.8	102.8		
2007	111.6	111.9	82.3	117.1	109.7	117.4	105.2		
2008	124.5	127.7	83.9	128.8	124.7	122.9	113.4		
2009	132.4	140.7	89.0	130.5	126.8	127.2	115.6		
2009									
June	134.5	144.7	89.0	130.7	126.5	128.0	115.8		
July	133.3	142.3	88.7	129.1	127.5	127.9	116.0		
August	131.9	140.3	88.7	129.5	126.3	126.3	116.1		
September	131.1	138.2	89.3	129.0	128.0	126.3	116.1		
October	129.6	135.4	89.5	129.3	127.4	126.3	116.1		
November	128.5	133.5	89.4	128.8	126.8	127.2	115.7		
December	131.1	138.4	89.7	128.7	128.1	126.9	115.2		
2010									
January	130.8	136.4	89.9	130.9	127.8	126.9	119.2		
February	132.8	140.0	90.3	129.8	128.5	128.8	119.5		
March	133.4	139.7	90.3	133.2	129.4	130.1	119.7		
April	133.2	138.2	90.5	133.7	130.8	132.3	120.7		
May	133.4	(b)	138.2	92.2	135.5	(b)	130.4	132.1	120.6
June (a)	134.1		139.3	93.6	135.9		130.9	132.1	120.7
<u>Percentage Change (a)</u>									
Jun 2010 over May 2010	0.5	0.8	1.5	0.3	0.4	0.0	0.1		
Jun 2010 over Jun 2009	-0.3	-3.7	5.2	4.0	3.5	3.2	4.2		
ALL ITEMS UNDERLYING INDEX									
Group	All Items	Food	Clothing and Footwear	Housing and Household Operations	Transport and Communications	Alcohol and Tobacco	Miscellaneous		
<i>Weights</i>	514	387	20	55	4	n.a.	48		
2006	106.3	107.8	85.0	104.3	107.3		105.8		
2007	113.6	116.4	82.3	107.5	117.7		110.7		
2008	127.7	133.4	83.9	112.8	141.8		116.1		

2009	140.1	148.7	89.1	117.0	148.8	118.4
2009						
June	140.8	149.5	89.0	118.1	150.9	117.7
July	139.4	147.7	88.7	117.4	153.2	118.2
August	140.0	148.5	88.7	117.3	153.2	118.3
September	140.6	149.3	89.3	117.0	151.5	118.3
October	139.3	147.7	89.5	115.9	151.5	118.3
November	138.8	147.2	89.4	115.8	149.7	117.4
December	138.6	147.1	89.7	115.6	149.4	116.4
2010						
January	138.5	146.5	89.9	115.4	149.4	119.9
February	138.9	146.9	90.3	115.8	152.9	120.5
March	139.6	147.8	90.3	115.4	151.7	121.0
April	139.7	147.8	90.5	114.6	153.8	122.9
May	139.6	147.5	92.2	114.8	154.4	122.9
June (a)	140.0	148.0	93.6	114.9	154.2	123.1
<u>Percentage Change (a)</u>						
Jun 2010 over May 2010	0.3	0.3	1.5	0.1	-0.1	0.2
Jun 2010 over Jun 2009	-0.6	-1.0	5.2	-2.7	2.2	4.6

(a): Provisional figures

(b): Revised figures

Note: n.a. Not applicable

Table 2. AVERAGE RETAIL PRICES OF SELECTED COMMODITIES

Commodities	Unit	2009			2010		
		Apr	May	June	Apr	May	June (a)
1 Flour	1 lb	1.48	1.39	1.48	1.36	1.33	1.24
2 Rice	1 lb	2.22	2.22	2.22	1.78	1.63	1.71
3 Salt	1 lb	0.72	0.71	0.67	0.80	0.72	0.74
4 Sugar (Brown)	1 lb	1.07	1.10	1.10	1.19	1.33	1.29
5 Taamu	1 lb	1.91	2.15	2.14	1.15	1.19	1.17
6 Breadfruit	1 lb	0.72	0.78	0.62	0.48	0.58	0.66
7 Potatoes	1 lb	1.31	1.29	1.33	1.32	1.31	1.30
8 Onions	1 lb	1.30	1.29	1.19	1.35	1.24	1.36
9 Taro	1 lb	1.51	1.70	1.78	0.89	1.03	1.18
10 Yam	1 lb	1.31	1.44	1.82	1.47	1.32	1.31
11 Chinese Cabbage	1 lb	3.20	3.29	2.71	2.27	2.49	2.69
12 Head Cabbage	1 lb	3.59	5.28	3.46	3.57	3.61	3.23
13 Cucumbers	1 lb	1.55	1.71	1.72	2.12	1.84	1.33
14 Pumpkins	1 lb	0.78	1.17	1.26	1.00	1.54	1.32
15 Green Beans	1 lb	6.00	4.39	7.45	4.38	3.47	4.97
16 Water Cress	1 lb	3.54	3.93	4.95	3.63	4.29	4.04
17 Tomatoes	1 lb	4.32	5.88	5.14	5.40	6.56	7.00
18 Taro leaves	1 lb	2.00	3.06	3.15	2.88	3.35	3.52
19 Bananas	1 lb	0.80	0.74	0.71	0.47	0.49	0.52
20 Coconuts	1 lb	0.21	0.24	0.22	0.19	0.24	0.24
21 String Fish	1 lb	3.89	4.26	3.88	3.48	3.56	3.55
22 Large Fish	1lb	6.35	5.93	6.35	6.27	4.43	6.67
23 Fish (piece)	1lb	5.69	5.06	4.87	7.08	5.16	4.15
24 Canned fish (Early Dawn Natual Oil)	15 oz	4.42	4.38	4.39	4.49	4.25	4.00
25 Mutton Flaps	1 lb	4.36	4.36	4.37	5.02	5.06	4.97
26 Chicken leg quarters	1 lb	2.24	2.27	2.26	1.83	1.77	1.87
27 Turkey Wings	1 lb	2.75	2.94	2.94	3.43	3.35	3.35
28 Pig Trotter	1 lb	2.94	2.88	2.91	2.96	3.35	3.38
29 Eggs	doz	6.87	6.83	6.63	6.20	6.10	6.59
30 Cigarettes Pall Mall Filter	20 rolls	7.67	7.67	7.67	8.14	8.14	8.14
31 Cigarettes Pall Mall Menthol	20 rolls	7.67	7.67	7.67	8.14	8.14	8.14
32 Cigarettes (Pocket Edition)	packet	16.10	16.20	16.20	19.33	19.33	19.33
33 Samoan kava	packet	7.88	7.88	7.88	8.63	8.38	8.38
34 T-shirt (children)	32size	7.36	7.36	7.61	8.50	8.50	9.25
35 Ie Solosolo (cotton print 42 inch)	2yds	6.12	6.15	6.15	5.78	6.12	6.27
36 Jandals (soft rubber)	size 10.5	4.98	4.98	4.98	5.35	6.81	6.81

37	Air Fares (Apia-Auckland-Apia)	return trip	1370.50	1370.50	1370.50	1321.18	1321.18	1474.18
38	Electricity	kwh	0.81	0.80	0.82	0.90	0.93	0.93
39	Kerosene	1 ltr	2.19	2.12	2.07	2.23	2.26	2.33
40	Tea Towel (long stripes)	each	2.30	2.30	2.30	2.37	2.40	2.73
41	Refrigerator (Fisher & Paykel)	331 litres	2690.00	2600.00	2690.00	2500.00	2690.00	2690.00
42	Petrol (unleaded)	1 ltr	2.30	2.36	2.23	2.56	2.52	2.51
43	Diesel	1 ltr	2.13	2.28	2.16	2.50	2.49	2.55
44	Car Battery (12 volt)	N50 24	272.00	263.67	253.67	261.00	264.33	263.33
45	Diapers (Huggies 16kg & over)	package	34.84	34.84	34.84	36.23	36.06	36.48
46	Washing soap (yellow)	bar	3.15	3.15	3.08	2.93	2.90	2.90

(a) : Provisional figures

Table 3. IMPORTED GOODS COMPONENT OF THE CONSUMER PRICE INDEX

(Base Period : Average Prices March 2004 = 100)

Group	All Items	Food	Clothing and Footwear	Housing and Household Operations	Transport and Communications	Alcohol and Tobacco	Miscellaneous
<i>Weights</i>	437	288	20	48	30	17	35
2006	109.2	107.3	85.0	113.9	140.1	104.8	108.0
2007	116.7	116.7	82.3	115.7	145.2	115.2	114.4
2008	133.3	133.2	83.9	129.5	194.6	119.3	122.0
2009	140.6	148.2	89.0	123.5	160.7	121.9	122.8
2009							
June	141.1	149.0	89.0	123.4	159.2	123.8	122.3
July	139.9	146.9	88.7	122.5	164.0	123.0	122.9
August	140.0	148.0	88.7	121.7	156.8	123.0	123.0
September	141.3	149.0	89.3	122.1	164.6	123.0	123.0
October	139.7	146.9	89.5	120.8	162.1	123.0	123.0
November	139.0	146.4	89.4	120.7	159.0	124.3	121.8
December	139.4	146.2	89.7	120.1	170.1	122.3	120.5
2010							
January	138.7	145.3	89.9	120.7	162.6	122.3	123.9
February	139.5	145.4	90.3	121.5	167.3	128.2	124.7
March	140.4	146.4	90.3	121.3	171.3	128.2	125.5
April	141.1	146.4	90.5	121.7	177.8	128.6	128.1
May	140.9	145.9	92.2	122.5	176.0	128.6	128.1
June (a)	141.4	146.5	93.6	123.6	176.2	128.6	128.3
September (a)	109.5	106.7	83.9	114.9	152.2	103.7	106.1
<u>Percentage Change (a)</u>							
Jun 2010 over May 2010	0.4	0.4	1.5	0.9	0.1	0.0	0.2
Jun 2010 over Jun 2009	0.2	-1.7	5.2	0.2	10.7	3.9	4.9
IMPORTED ITEMS UNDERLYING INDEX							
Group	All Items	Food	Clothing and Footwear	Housing and Household Operations	Transport and Communications	Alcohol and Tobacco	Miscellaneous
<i>Weights</i>	385	288	20	40	2	<i>n.a.</i>	35
2006	105.9	107.3	85.0	104.3	107.8		108.0
2007	113.7	116.7	82.3	106.8	113.1		114.4
2008	127.5	133.2	83.9	112.1	154.4		121.9
2009	139.7	148.2	89.1	117.6	164.6		122.8
2009							
June	140.3	149.0	89.0	118.5	168.4		122.3
July	138.8	146.9	88.7	118.0	173.3		122.9

August	139.5	148.0	88.7	117.5	173.3	123.0
September	140.3	149.0	89.3	117.5	169.8	123.0
October	138.7	146.9	89.5	116.2	169.8	123.0
November	138.1	146.4	89.4	116.1	166.0	121.8
December	137.8	146.2	89.7	115.5	165.4	120.5
2010						
January	137.4	145.3	89.9	115.1	165.4	123.9
February	137.6	145.4	90.3	115.6	172.5	124.7
March	138.4	146.4	90.3	115.1	170.0	125.5
April	138.6	146.4	90.5	114.4	174.3	128.1
May	138.4	145.9	92.2	114.8	175.7	128.1
June (a)	138.9	146.5	93.6	115.2	175.3	128.3
<u>Percentage Change (a)</u>						
Jun 2010 over May 2010	0.4	0.4	1.5	0.3	-0.2	0.2
Jun 2010 over Jun 2009	-1.0	-1.7	5.2	-2.8	4.1	4.9

(a): Provisional figures

Note: n.a. Not applicable

Table 4. LOCAL GOODS COMPONENT OF THE CONSUMER PRICE INDEX
(Base Period : Average Prices March 2004 = 100)

Group	All Items	Food	Housing and Household Operations	Transport and Communications	Alcohol and Tobacco	Miscellaneous
<i>Weights</i>	563	215	64	114	105	65
2006	103.0	99.4	108.9	106.5	104.8	100.0
2007	107.6	105.5	118.1	100.4	117.8	100.3
2008	117.6	120.3	128.2	106.4	123.5	108.8
2009	126.0	130.6	135.9	117.9	128.1	111.8
2009						
June	129.4	139.0	136.2	117.9	128.7	112.4
July	128.1	136.2	134.1	117.9	128.7	112.4
August	125.7	130.2	135.3	118.3	126.9	112.4
September	123.1	123.8	134.1	118.3	126.9	112.4
October	121.8	119.9	135.8	118.3	126.9	112.4
November	120.4	116.2	134.9	118.3	127.7	112.4
December	124.7	128.0	135.1	117.1	127.7	112.4
2010						
January	124.6	124.6	138.6	118.6	127.7	116.7
February	127.6	132.8	136.1	118.3	128.9	116.7
March	127.9	130.9	142.2	118.3	130.4	116.7
April	127.1	127.4	142.8	118.4	132.9	116.7
May	127.6	(b) 128.0	145.3	(b) 118.4	132.6	116.7
June (a)	128.3	129.7	145.2	119.0	132.6	116.7
<u>Percentage Change (a)</u>						
Jun 2010 over May 2010	0.5	1.3	-0.1	0.5	0.0	0.0
Jun 2010 over Jun 2009	-0.9	-6.7	6.6	0.9	3.0	3.8
LOCAL ITEMS UNDERLYING INDEX						
Group	All Items	Food	Housing and Household Operations	Transport and Communications	Alcohol and Tobacco	Miscellaneous
<i>Weights</i>	129	99	15	2	n.a.	13
2006	107.7	109.3	104.3	106.8		100.0
2007	113.5	115.5	109.6	122.0		101.3
2008	128.3	134.0	109.6	122.0		101.3
2008	141.3	150.0	115.5	133.8		106.8
2009						

June	142.1	151.0	116.9	134.3	105.8
July	141.1	149.9	115.5	134.3	105.8
August	141.4	150.1	116.8	134.3	105.8
September	141.5	150.3	115.6	134.3	105.8
October	141.2	150.1	115.2	134.3	105.8
November	141.0	149.8	115.0	134.3	105.8
December	141.1	149.8	115.8	134.3	105.8
2010					
January	141.7	150.1	116.1	134.3	109.4
February	142.6	151.2	116.5	134.3	109.4
March	143.1	151.8	116.4	134.3	109.4
April	142.9	151.8	115.2	134.3	109.4
May	143.2	152.3	114.8	134.3	109.4
June (a)	143.3	152.4	114.3	134.3	109.4
<u>Percentage Change (a)</u>					
Jun 2010 over May 2010	0.1	0.1	-0.4	0.0	0.0
Jun 2010 over Jun 2009	0.8	0.9	-2.2	0.0	3.4

(a): Provisional figures

(a): Revised figures

Note: n.a. Not applicable