

Please address all correspondence
To Government Statistician
In reply, please quote the file reference



File Ref: CPI 11/10

GOVERNMENT OF SAMOA

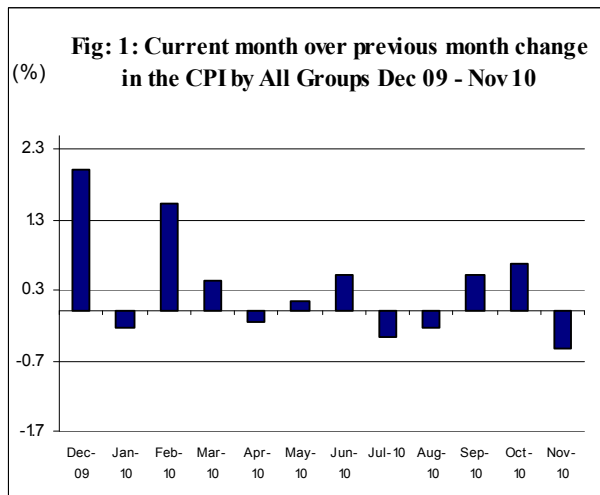
SAMOA BUREAU OF STATISTICS

CONSUMER PRICE INDEX - November 2010

(Based Period: Average Prices March 2004 = 100)

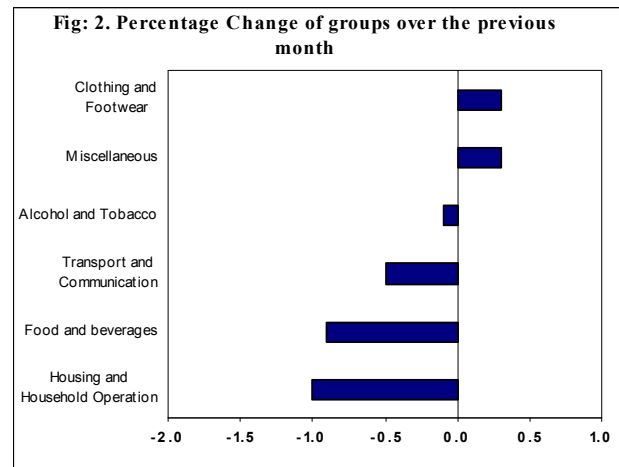
SUMMARY

The All Items Consumer Price Index for the month of November 2010 registered a decrease of 0.5 percent when compared to the previous month, and an increase of 4.4 percent when compared to the same month of last year. Depicted in Fig 1 are the month to month changes in the Consumer Price Index by all groups from December 09 to November 10.



The 0.5 percent decrease in the Overall Index is attributed mainly to a decrease of 1.1 percent in the Housing and Household

Operations, 0.9 percent decrease in the Food group index and a slight decrease of 0.1 percent in the Alcohol and Tobacco group index. On the contrary, increases were recorded for other groups namely Clothing and Footwear (0.2%), Transport and Communications (0.2%) and Miscellaneous group index (0.1). Graphically presented in Fig 2 is the November 2010 percentage change of groups over October 2010.



Lower prices recorded for refrigerator (fisher & Paykel 331 litres), electricity (kwh) and roofing iron (Zincalume 12ft) are reflected in the 1.1 percent decrease in the Housing and Household Operations.



The 0.9 percent decrease in the Food group item is primarily due to lower prices recorded for taamu, breadfruit, taro, fresh fish (large), rice and ramen (cup 65gms).

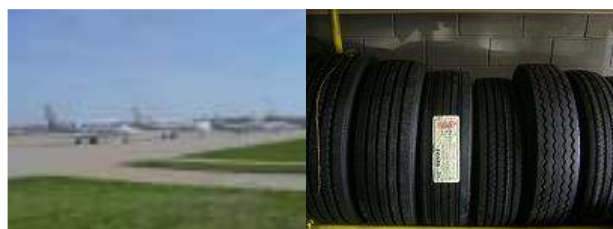


Higher price recorded for jandals (soft rubber size 10.5) was the main contributor to an increase of 0.2 percent in the Clothing and Footwear group index.



The 0.2 percent increase in the Transport and Communications group index is mainly due to higher prices recorded for Car Tyre

(Radial205/70R (14)) and Air fares (Apia-Auckland-Apia).



Higher prices recorded for Toilet soap (lux 100g) has reflected in the 0.1 percent increase in the Miscellaneous group index.



The imported component registered a decrease of 0.7 percent mainly due to lower prices recorded for rice, bread, mutton neck, canned fish (early dawn tomato sauce) and corned beef (palm 12oz).

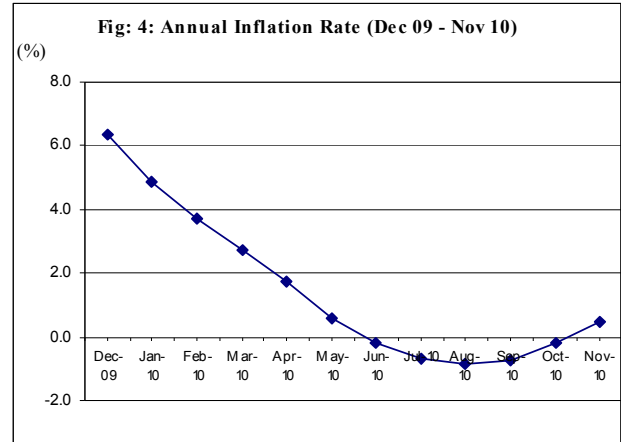


The local component registered a decrease of 0.3 percent mainly due to lower prices recorded for taro, breadfruit, taamu, fresh fish (large) and electricity (kwh).



The twelve months ending November 2010 compared to the twelve months ending November 2009 shows an increase of 0.5 percent, as illustrated below in Fig 4.

The All Items Underlying Index for November 2010 registered a decrease of 0.3 percent when compared to October 2010, and an increase of 3.5 percent when compared to November 2009. The 0.3 percent decrease in the Overall Underlying Index is attributed to a decrease of 0.7 percent in the imported component and a 0.3 percent decrease in the local component.



The attached Tables and Graphs provide the user with more detailed analysis.

Papalii Fasavalu Benjamin Sila
ACTING GOVERNMENT STATISTICIAN

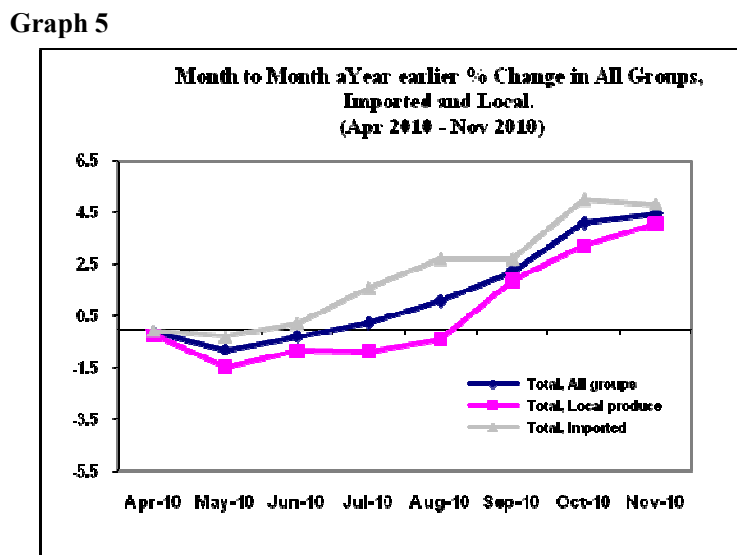
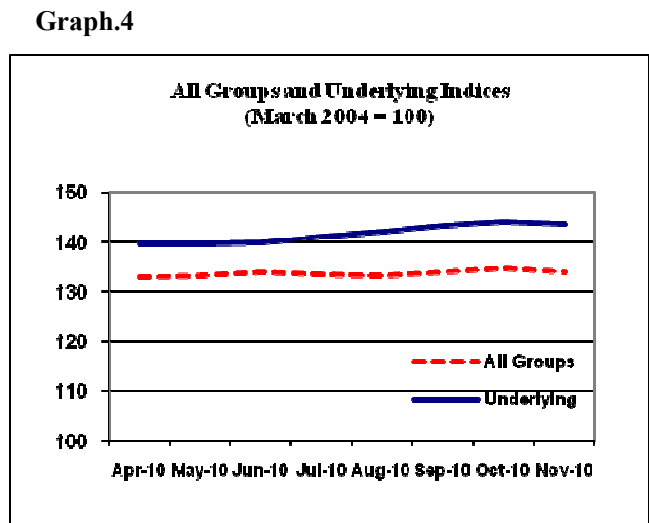
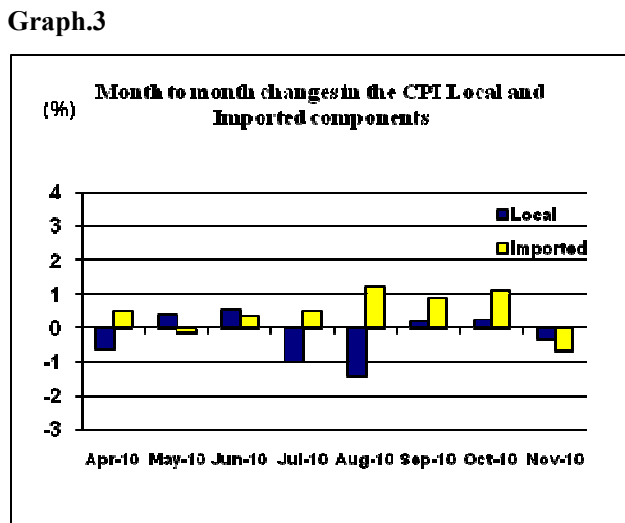
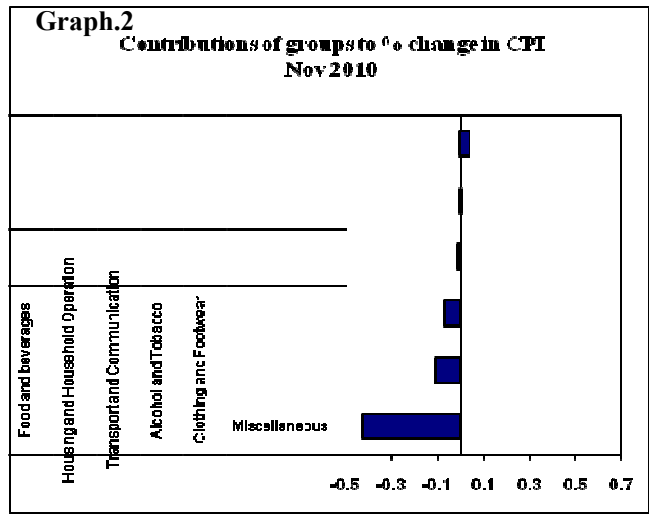
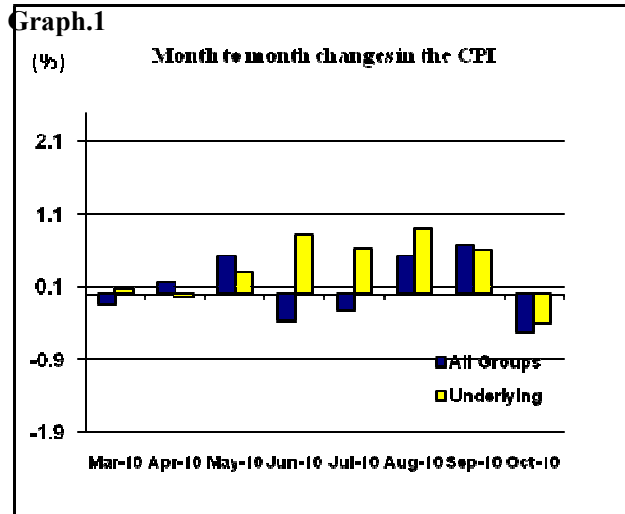


Table 1. CONSUMER PRICE INDEX.
(Base Period : Average Prices March 2004 = 100)

Group	All Items	Food	Clothing and Footwear	Housing and Household Operations	Transport and Communications	Alcohol and Tobacco	Miscellaneous
<i>Weights</i>	1000	503	20	111	144	122	100
2006	105.7	103.9	85.0	111.0	113.5	104.8	102.8
2007	111.6	111.9	82.3	117.1	109.7	117.4	105.2
2008	124.5	127.7	83.9	128.8	124.7	122.9	113.4
2009	132.4	140.7	89.0	130.5	126.8	127.2	115.6
2009							
October	129.6	135.4	89.5	129.3	127.4	126.3	116.1
November	128.5	133.5	89.4	128.8	126.8	127.2	115.7
December	131.1	138.4	89.7	128.7	128.1	126.9	115.2
2010							
January	130.8	136.4	89.9	130.9	127.8	126.9	119.2
February	132.8	140.0	90.3	129.8	128.5	128.8	119.5
March	133.4	139.7	90.3	133.2	129.4	130.1	119.7
April	133.2	138.2	90.5	133.7	130.8	132.3	120.7
May	133.4	138.2	92.2	135.5	130.4	132.1	120.6
June	134.1	139.3	93.6	135.9	130.9	132.1	120.7
July	133.6	138.2	93.7	135.9	130.1	132.3	121.9
August	133.3	137.8	92.2	135.2	130.2	132.5	121.8
September	134.0	137.9	91.8	136.7	130.6	136.4	121.8
October	134.9	139.6	92.3	135.8	128.7	139.6	121.9
November (a)	134.2	138.4	92.5	134.3	129.0	139.5	122.0
<u>Percentage Change (a)</u>							
Nov 2010 over Oct 2010	-0.5	-0.9	0.2	-1.1	0.2	-0.1	0.1
Nov 2010 over Nov 2009	4.4	3.7	3.5	4.3	1.7	9.7	5.4
ALL ITEMS UNDERLYING INDEX							
Group	All Items	Food	Clothing and Footwear	Housing and Household Operations	Transport and Communications	Alcohol and Tobacco	Miscellaneous
<i>Weights</i>	514	387	20	55	4	n.a.	48
2006	106.3	107.8	85.0	104.3	107.3		105.8
2007	113.6	116.4	82.3	107.5	117.7		110.7
2008	127.7	133.4	83.9	112.8	141.8		116.1
2009	140.1	148.7	89.1	117.0	148.8		118.4
2009							
October	139.3	147.7	89.5	115.9	151.5		118.3

November	138.8	147.2	89.4	115.8	149.7	117.4
December	138.6	147.1	89.7	115.6	149.4	116.4
2010						
January	138.5	146.5	89.9	115.4	149.4	119.9
February	138.9	146.9	90.3	115.8	152.9	120.5
March	139.6	147.8	90.3	115.4	151.7	121.0
April	139.7	147.8	90.5	114.6	153.8	122.9
May	139.6	147.5	92.2	114.8	154.4	122.9
June	140.0	148.0	93.6	114.9	154.2	123.1
July	141.2	149.5	93.7	115.1	150.7	122.8
August	142.0	150.9	92.2	114.5	147.2	122.8
September	143.3	152.5	91.8	115.4	146.9	122.8
October	144.1	153.8	92.3	114.6	135.1	122.8
November (a)	143.6	153.0	92.5	113.8	139.6	123.2
<u>Percentage Change (a)</u>						
Nov 2010 over Oct 2010	-0.3	-0.5	0.2	-0.7	3.3	0.3
Nov 2010 over Nov 2009	3.5	3.9	3.5	-1.7	-6.7	4.9

(a): Provisional figures

Note: n.a. Not applicable

Table 2. AVERAGE RETAIL PRICES OF SELECTED COMMODITIES

Commodities	Unit	2009			2010		
		Sep	Oct	Nov	Sep	Oct	Nov
1 Flour	1 lb	1.45	1.45	1.38	1.34	1.29	1.23
2 Rice	1 lb	2.03	2.00	2.00	1.87	1.85	1.66
3 Bread (loaf)	each	1.89	1.89	1.89	1.94	1.93	1.91
4 Sugar (Brown)	1 lb	1.10	1.06	1.09	1.31	1.42	1.54
5 Taamu	1 lb	1.43	1.39	1.21	1.21	1.09	0.82
6 Breadfruit	1 lb	0.73	0.66	0.42	0.38	0.69	0.52
7 Potatoes	1 lb	1.34	1.32	1.28	1.35	1.49	1.39
8 Rice (long grain)	1 lb	2.03	2.00	2.00	1.87	1.85	1.66
9 Taro	1 lb	1.35	1.26	1.06	1.12	1.09	0.97
10 Ramen (cup)	65gms	1.84	1.83	1.78	1.98	1.98	1.88
11 Chinese Cabbage	1 lb	1.33	1.03	1.42	1.13	1.26	1.98
12 Head Cabbage	1 lb	1.41	1.51	1.36	1.47	1.74	1.88
13 Cucumbers	1 lb	0.94	1.13	1.61	1.16	0.97	1.02
14 Pumpkins	1 lb	0.77	0.61	0.57	0.69	0.63	0.68
15 Green Beans	1 lb	3.06	2.94	2.63	2.25	1.77	1.71
16 Water Cress	1 lb	3.05	2.57	2.24	3.15	2.25	2.59
17 Tomatoes	1 lb	2.54	1.58	1.27	2.62	2.06	2.61
18 Taro leaves	1 lb	3.15	3.63	2.46	2.71	2.54	2.84
19 Bananas	1 lb	0.72	0.58	0.50	0.45	0.48	0.47
20 Fish & Chips (meal / local)	1 serve	7.50	7.50	7.50	9.00	8.00	8.00
21 String Fish	1 lb	3.84	3.69	3.17	3.44	3.31	3.64
22 Large Fish	1lb	5.36	5.68	4.97	5.36	6.82	6.16
23 Conned Beef (Palm)	12oz	10.27	10.22	10.32	10.55	11.45	11.15
24 Canned fish (Early Dawn Tomato Sauce)	15 oz	4.44	4.44	4.44	4.50	4.50	4.27
25 Mutton necks	1 lb	3.73	3.81	4.23	4.64	4.70	4.51
26 Chicken leg quarters	1 lb	2.36	2.21	2.11	1.92	1.89	1.95
27 Turkey Wings	1 lb	3.43	3.43	3.17	3.63	3.53	3.53
28 Spirit (whisky)	nip	8.00	8.00	8.00	8.33	10.33	10.33
29 Spirit (Volka)	nip	8.33	8.33	8.33	8.67	10.33	10.33
30 Beer (Vailima / local)	350 mls	3.67	3.67	3.69	3.93	4.07	4.09
31 Jandals (soft rubber)	10.5 size	5.35	5.35	5.35	7.01	7.01	7.61
32 Refridgerator (Fisher & Paykel)	331ltr	2690.00	2690.00	2690.00	2490.00	2690.00	2490.00
33 Roofing iron (Zincalume)	12 ft	60.78	58.98	58.98	60.60	57.05	55.45
34 Air Fares (Apia-Auckland-Apia)	return trip	1295.18	1295.18	1295.18	1430.60	1308.50	1403.70
35 Electricity	kwh	0.80	0.82	0.81	0.94	0.94	0.92
36 Kerosene	1 ltr	2.03	2.01	2.01	2.34	2.24	2.23
37 Nails 2" (galvanised)	lb	3.85	3.68	3.68	3.50	3.13	3.03

38	Nails 4" (galvanised)	lb	3.85	3.68	3.68	3.50	3.13	3.03
39	Petrol (unleaded)	1 ltr	2.33	2.26	2.20	2.51	2.39	2.38
40	Diesel	1 ltr	2.27	2.22	2.20	2.56	2.46	2.45
41	Toilet soap (Lux)	100g	1.11	1.11	1.11	1.06	1.06	1.13
42	Car Tyre (Radial / imported)	205/70R(14)	252.50	252.50	242.50	210.00	199.00	224.00
43	Car Battery (12 volt)	N50	250.00	250.00	248.33	253.33	250.00	256.67
44	Diapers (Huggies 16kg & over)	24 package	34.61	34.61	33.98	37.36	37.46	37.46

(a) : Provisional figures

Table 3. IMPORTED GOODS COMPONENT OF THE CONSUMER PRICE INDEX
(Base Period : Average Prices March 2004 = 100)

Group	All Items	Food	Clothing and Footwear	Housing and Household Operations	Transport and Communications	Alcohol and Tobacco	Miscell- aneous
<i>Weights</i>	437	288	20	48	30	17	35
2006	109.2	107.3	85.0	113.9	140.1	104.8	108.0
2007	116.7	116.7	82.3	115.7	145.2	115.2	114.4
2008	133.3	133.2	83.9	129.5	194.6	119.3	122.0
2009	140.6	148.2	89.0	123.5	160.7	121.9	122.8
2009							
October	139.7	146.9	89.5	120.8	162.1	123.0	123.0
November	139.0	146.4	89.4	120.7	159.0	124.3	121.8
December	139.4	146.2	89.7	120.1	170.1	122.3	120.5
2010							
January	138.7	145.3	89.9	120.7	162.6	122.3	123.9
February	139.5	145.4	90.3	121.5	167.3	128.2	124.7
March	140.4	146.4	90.3	121.3	171.3	128.2	125.5
April	141.1	146.4	90.5	121.7	177.8	128.6	128.1
May	140.9	145.9	92.2	122.5	176.0	128.6	128.1
June	141.4	146.5	93.6	123.6	176.2	128.6	128.3
July	142.1	148.3	93.7	122.3	169.7	128.6	127.9
August	143.8	150.3	92.2	122.9	175.6	128.6	127.9
September	145.1	151.9	91.8	124.0	175.1	132.9	127.9
October	146.7	154.4	92.3	121.9	169.1	148.7	128.0
November (a)	145.7	153.1	92.5	121.0	169.2	145.8	128.5
October	146.7	154.4	92.3	121.9	169.1	148.7	128.0
<u>Percentage Change (a)</u>							
Nov 2010 over Oct 2010	-0.7	-0.8	0.2	-0.7	0.1	-2.0	0.4
Nov 2010 over Nov 2009	4.8	4.6	3.5	0.2	6.4	17.3	5.5
IMPORTED ITEMS UNDERLYING INDEX							
Group	All Items	Food	Clothing and Footwear	Housing and Household Operations	Transport and Communications	Alcohol and Tobacco	Miscell- aneous
<i>Weights</i>	385	288	20	40	2	n.a.	35
2006	105.9	107.3	85.0	104.3	107.8		108.0
2007	113.7	116.7	82.3	106.8	113.1		114.4
2008	127.5	133.2	83.9	112.1	154.4		121.9
2009	139.7	148.2	89.1	117.6	164.6		122.8
2009							
October	138.7	146.9	89.5	116.2	169.8		123.0

November	138.1	146.4	89.4	116.1	166.0	121.8
December	137.8	146.2	89.7	115.5	165.4	120.5
2010						
January	137.4	145.3	89.9	115.1	165.4	123.9
February	137.6	145.4	90.3	115.6	172.5	124.7
March	138.4	146.4	90.3	115.1	170.0	125.5
April	138.6	146.4	90.5	114.4	174.3	128.1
May	138.4	145.9	92.2	114.8	175.7	128.1
June	138.9	146.5	93.6	115.2	175.3	128.3
July	140.2	148.3	93.7	115.2	168.1	127.9
August	141.5	150.3	92.2	114.3	160.8	127.9
September	142.8	151.9	91.8	115.6	160.2	127.9
October	144.6	154.4	92.3	114.5	155.6	128.0
November (a)	143.6	153.1	92.5	113.5	164.8	128.5
<i>Percentage Change (a)</i>						
Nov 2010 over Oct 2010	-0.6	-0.8	0.2	-0.8	5.9	0.4
Nov 2010 over Nov 2009	4.0	4.6	3.4	-2.2	-0.7	5.4

(a): Provisional figures

Note: n.a. Not applicable

Table 4. LOCAL GOODS COMPONENT OF THE CONSUMER PRICE INDEX

(Base Period : Average Prices March 2004 = 100)

Group	All Items	Food	Housing and Household Operations	Transport and Communications	Alcohol and Tobacco	Miscellaneous
<i>Weights</i>	563	215	64	114	105	65
2006	103.0	99.4	108.9	106.5	104.8	100.0
2007	107.6	105.5	118.1	100.4	117.8	100.3
2008	117.6	120.3	128.2	106.4	123.5	108.8
2009	126.0	130.6	135.9	117.9	128.1	111.8
2009						
October	121.8	119.9	135.8	118.3	126.9	112.4
November	120.4	116.2	134.9	118.3	127.7	112.4
December	124.7	128.0	135.1	117.1	127.7	112.4
2010						
January	124.6	124.6	138.6	118.6	127.7	116.7
February	127.6	132.8	136.1	118.3	128.9	116.7
March	127.9	130.9	142.2	118.3	130.4	116.7
April	127.1	127.4	142.8	118.4	132.9	116.7
May	127.6	128.0	145.3	118.4	132.6	116.7
June	128.3	129.7	145.2	119.0	132.6	116.7
July	127.0	124.8	146.1	119.7	132.9	118.6
August	125.2	121.2	144.5	118.3	133.1	118.6
September	125.4	119.1	146.2	118.9	137.0	118.6
October	125.7	119.8	146.2	118.1	138.2	118.6
November (a)	125.3	118.9	144.3	118.5	138.5	118.6
<u>Percentage Change (a)</u>						
Nov 2010 over Oct 2010	-0.3	-0.8	-1.3	0.3	0.2	0.0
Nov 2010 over Nov 2009	4.1	2.3	7.0	0.2	8.5	5.5
LOCAL ITEMS UNDERLYING INDEX						
Group	All Items	Food	Housing and Household Operations	Transport and Communications	Alcohol and Tobacco	Miscellaneous
<i>Weights</i>	129	99	15	2	<i>n.a.</i>	13
2006	107.7	109.3	104.3	106.8		100.0
2007	113.5	115.5	109.6	122.0		101.3
2008	128.3	134.0	109.6	122.0		101.3
2008	141.3	150.0	115.5	133.8		106.8

2009						
August	141.4	150.1	116.8	134.3		105.8
September	141.5	150.3	115.6	134.3		105.8
October	141.2	150.1	115.2	134.3		105.8
November	141.0	149.8	115.0	134.3		105.8
December	141.1	149.8	115.8	134.3		105.8
2010						
January	141.7	150.1	116.1	134.3		109.4
February	142.6	151.2	116.5	134.3		109.4
March	143.1	151.8	116.4	134.3		109.4
April	142.9	151.8	115.2	134.3		109.4
May	143.2	152.3	114.8	134.3		109.4
June	143.3	152.4	114.3	134.3		109.4
July	143.9	153.1	114.7	134.3		109.4
August	143.5	152.6	115.0	134.3		109.4
September	144.6	154.1	115.0	134.3		109.4
October	142.9	152.1	114.9	115.7		109.4
November (a)	143.3	152.8	114.5	115.7		109.4
	143.3	152.4	114.3	134.3		109.4
<u>Percentage Change (a)</u>						
Nov 2010 over Oct 2010						
Nov 2010 over Nov 2009	0.3	0.5	-0.3	0.0		0.0
	1.6	2.0	-0.4	-13.8		3.4

(a): Provisional figures

Note: n.a. Not applicable