

Please address all correspondence
To Government Statistician
In reply, please quote the file reference



File Ref: CPI 02/09

GOVERNMENT OF SAMOA

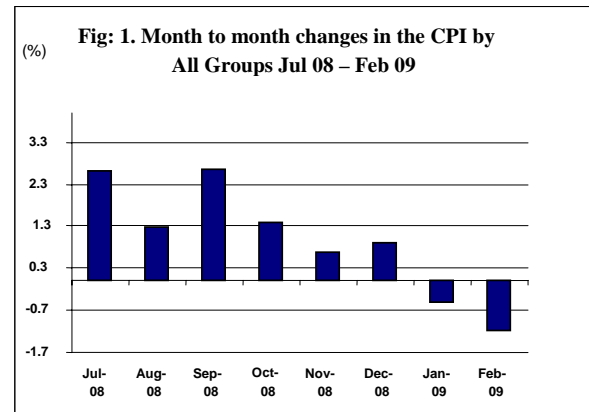
SAMOA BUREAU OF STATISTICS

CONSUMER PRICE INDEX - February 2009

(Based Period: Average Prices March 2004 = 100)

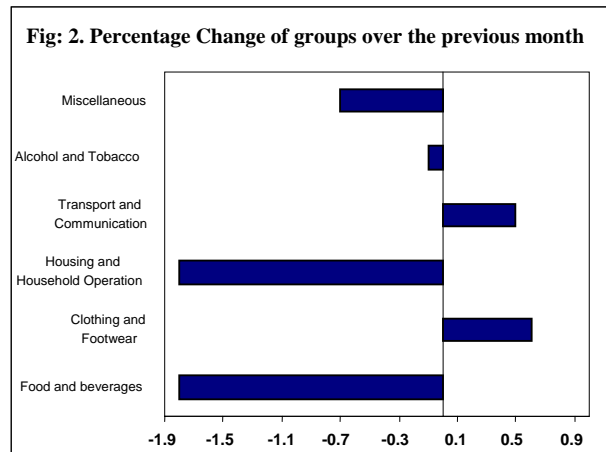
SUMMARY

The All Items Consumer Price Index for the month of February 2009 registered a decrease of 1.2 percent when compared to the previous month, and an increase of 13.3 percent when compared to the same month of last year. Depicted in Fig 1 is the month to month change in the Consumer Price Index by all groups from July 08 - February 09.



The 1.2 percent decrease in the Overall Index attributed mainly to a decrease of 1.8 percent in the Food group index. Housing and Household Operation, Miscellaneous and Alcohol and Tobacco group indices also recorded decreases of 1.8, 0.7 and 0.1 percent respectively.

By contrast, Clothing and Footwear and Transport and Communication group indices show increases of 0.6 and 0.5 percent in that order. Graphically presented in Fig 2 is the February 2009 percentage change of groups over January 2009.



Lower prices recorded for chicken leg quarter, mutton neck, rice, onion, salt, taro, fresh fish (string, large, piece) and some vegetables such as chinese and head cabbages and taro leaves are reflected in the 1.8 percent decrease in the Food group index.



prices recorded for ie solosolo (cotton print) and ie lanutasi (calico).

Higher prices recorded for petrol (unleaded) and engine oil has resulted in the 0.5 percent increase in the Transport and Communication group index.



The 1.8 percent decrease in the Housing and Household Operation group is primarily due to lower prices recorded for electricity (kwh), kerosene, kettle and washing soap.



The imported component of the Consumer Price Index registered a decrease of 1.9 percent due to lower prices recorded for chicken leg quarter, rice, onions, salt and paracetamol. The local component also shows a decrease of 0.6 percent due to lower prices recorded for taro, fresh fish (string, large, piece) and some other vegetables namely chinese and head cabbages, taro leaves and electricity (kwh).

Decreased prices recorded for medicine (paracetamol) and toilet soap (lux) is reflected in the 0.7 percent decrease in the Miscellaneous group index.



The Clothing and Footwear group registered an increase of 0.6 percent due to higher

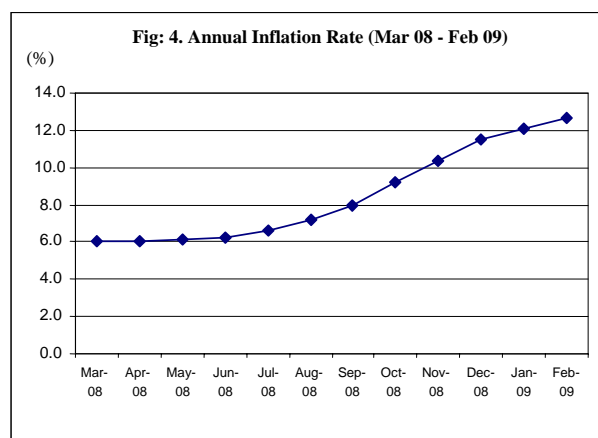
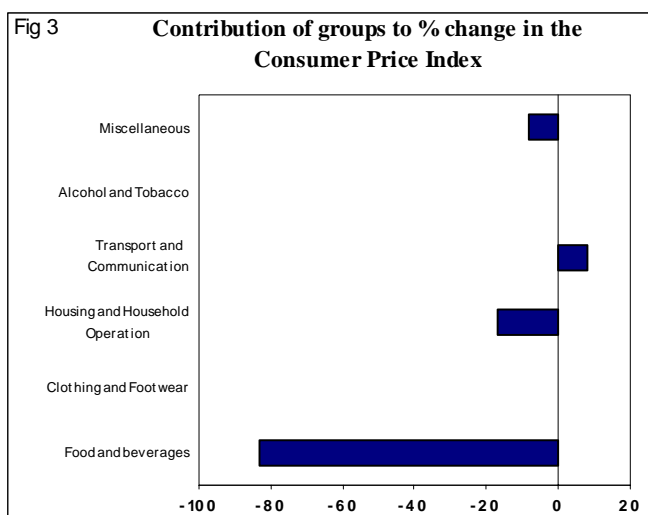
Table 1 Contribution by Groups

Groups	Percentage	
Food and beverages	-1.0	-83.3
Clothing and Footwear	0.0	0.0
Housing and Household Operation	-0.2	-16.7
Transport and Communication	0.1	8.3
Alcohol and Tobacco	0.0	0.0
Miscellaneous	-0.1	-8.3
Total, All groups	-1.2	-100.0

Food, Housing and Household Operation and Miscellaneous group indices registered decreases of 1.0, 0.2 and 0.1 percent respectively, with the Food group contributing 83 percent to the overall decrease. Fig 3 presents the Contribution of each group to the overall percentage change of the Consumer price Index during the reference period.

The All Items Underlying Index for February 2009 recorded a decrease of 1.6 percent when compared to January this year, and an increase of 18.5 percent when compared to February last year. The 1.6 percent decrease in the Overall Underlying Index is attributed to a decrease of 2.2 percent in the imported component, while the local component registered an increase of 0.4 percent.

The twelve months ending February 2009 compared to the twelve months ending February 2008 shows an increase of 12.7 percent, as illustrated below in Fig 4.



The attached Tables and Graphs provide the user with more details.

Muagututia S Reupena.
GOVERNMENT STATISTICIAN

Table 1. CONSUMER PRICE INDEX.

(Base Period : Average Prices March 2004 = 100)

Group	All Items	Food	Clothing and Footwear	Housing and Household Operations	Transport and Communications	Alcohol and Tobacco	Miscellaneous
<i>Weights</i>	1000	503	20	111	144	122	100
2005	101.9	99.9	88.8	107.7	108.1	100.2	101.0
2006	105.7	103.9	85.0	111.0	113.5	104.8	102.8
2007	111.6	111.9	82.3	117.1	109.7	117.4	105.2
2008	124.4	127.7	83.9	128.8	124.3	122.9	113.4
2008							
February	116.6	117.8	82.3	121.6	114.3	119.9	111.5
March	117.0	117.6	82.5	122.0	117.4	119.9	111.5
April	117.9	117.7	82.8	125.4	119.4	121.0	111.5
May	118.4	119.1	82.8	124.9	120.3	119.2	111.6
June	122.3	124.4	83.5	127.6	123.8	120.4	113.8
July	125.5	127.9	83.5	130.9	128.1	124.1	114.1
August	127.1	128.4	83.5	138.5	130.5	124.4	114.7
September	130.5	134.4	84.2	137.7	133.5	125.0	114.7
October	132.3	138.7	83.8	134.6	132.5	125.4	115.3
November	133.2	140.7	86.5	133.1	130.4	127.9	115.3
December	134.4	145.1	88.6	127.9	127.5	127.3	115.5
2009							
January	133.7	144.6	88.7	128.4	123.4	127.3	116.2
February (a)	132.1	142.0	89.2	126.1	124.0	127.2	115.4
<i>Percentage Change (a)</i>							
Feb 2009 over Jan 2009	-1.2	-1.8	0.6	-1.8	0.5	-0.1	-0.7
Feb 2009 over Feb 2008	13.3	20.5	8.4	3.7	8.5	6.1	3.5
ALL ITEMS UNDERLYING INDEX							
Group	All Items	Food	Clothing and Footwear	Housing and Household Operations	Transport and Communications	Alcohol and Tobacco	Miscellaneous
<i>Weights</i>	514	387	20	55	4	n.a.	48
2005	102.9	103.5	88.8	104.1	103.4		102.1
2006	106.3	107.8	85.0	104.3	107.3		105.8
2007	113.6	116.4	82.3	107.5	117.7		110.7
2008	127.7	133.4	83.9	112.8	141.8		116.1
2008							
February	118.1	121.4	82.3	111.6	132.0		112.7

March	119.9	123.5	82.5	113.2	132.4	112.7
April	120.5	124.2	82.8	112.9	144.0	112.6
May	121.7	126.4	82.8	109.6	141.8	112.8
June	124.5	129.4	83.5	110.1	145.1	117.5
July	126.3	131.5	83.5	112.1	144.8	118.0
August	128.5	134.2	83.5	112.5	144.8	118.0
September	134.0	141.4	84.2	114.0	145.2	118.0
October	137.5	145.7	83.8	115.2	145.2	119.2
November	140.5	149.5	86.5	115.1	145.2	119.4
December	143.3	152.7	88.6	117.2	150.9	119.6
2009						
January	142.3	151.2	88.7	117.3	150.9	121.2
February (a)	140.0	148.3	89.2	118.0	144.4	119.4

Percentage Change (a)

Feb 2009 over Jan 2009	-1.6	-1.9	0.6	0.6	-4.3	-1.5
Feb 2009 over Feb 2008	18.5	22.2	8.4	5.7	9.4	5.9

(a): Provisional figures

Note: n.a. Not applicable

Table 2. AVERAGE RETAIL PRICES OF SELECTED COMMODITIES

Commodities	Unit	2008				2009		
		Jan	Feb	Nov	Dec	Jan	Feb (a)	
1	Flour	1 lb	0.96	0.97	1.61	1.61	1.48	1.45
2	Rice	1 lb	1.08	1.08	2.13	2.22	2.20	2.06
3	Brown sugar	1 lb	0.87	0.88	1.07	1.07	1.03	1.07
4	Salt	1 lb	0.60	0.62	0.78	0.84	0.84	0.73
5	Taamu	1 lb	1.39	1.34	2.04	1.88	1.96	2.34
6	Breadfruit	1 lb	0.26	0.45	0.63	0.23	0.28	0.66
7	Potatoes	1 lb	1.39	1.45	1.60	1.61	1.67	1.55
8	Onions	1 lb	1.47	1.50	1.37	1.37	1.47	1.38
9	Taro	1 lb	1.19	1.30	1.71	1.48	1.41	1.33
10	Yam	1 lb	1.93	1.56	1.44	1.53	1.48	1.48
11	Green Beans	1 lb	3.89	2.05	2.23	4.58	5.20	6.00
12	Chinese Cabbage	1 lb	2.32	2.53	1.81	2.49	2.82	2.36
13	Head Cabbage	1 lb	3.90	3.01	1.75	4.57	5.05	4.76
14	Cucumbers	1 lb	1.07	1.52	0.80	1.08	1.28	1.76
15	Pumpkins	1 lb	0.73	1.29	1.02	1.04	0.70	0.83
16	Water Cress	1 lb	3.01	4.10	2.41	3.08	2.41	3.47
17	Tomatoes	1 lb	4.00	3.97	1.53	3.22	4.32	4.57
18	Taro leaves	1 lb	2.81	2.86	2.14	2.78	3.40	3.27
19	Bananas	1 lb	0.52	0.52	0.61	0.56	0.47	0.59
20	String Fish	1 lb	4.86	3.21	3.43	3.93	4.41	3.97
21	Large Fish	1lb	8.72	5.10	6.26	7.65	8.11	5.41
22	Fish (piece)	1lb	6.82	5.43	4.92	5.79	6.67	6.20
23	Canned fish (early dawn tomato sauce)	15 oz	2.91	2.91	3.85	4.09	4.14	4.15
24	Canned fish (early dawn natural oil)	15 oz	2.84	2.84	3.96	4.15	4.12	4.12
25	Mutton Flaps	1 lb	3.75	3.83	4.00	4.45	4.23	4.33
26	Mutton Neck	1 lb	3.38	3.46	3.46	3.69	3.76	3.69
27	Turkey Wings	1 lb	2.45	2.48	2.88	3.01	3.04	3.04
28	Chicken leg quarters	1 lb	2.18	2.21	2.70	2.77	2.67	2.30
29	Bra (Woman)	36A	7.16	7.16	7.66	7.91	7.91	7.91
30	Dressing Material (poplin 45inch)	1yard	3.23	2.99	3.76	3.48	3.48	3.33
31	Ie Solosolo	2yds	5.42	5.78	5.68	6.10	6.10	6.18
32	Ie lanutasi (calico)	2yds	6.18	6.18	6.42	6.72	6.72	6.98
33	Panties	medium	4.32	4.32	4.78	5.06	5.02	5.50
34	School Uniform	each	22.00	22.00	22.00	22.00	24.00	26.00
35	Electricity	kwh	0.79	0.79	0.96	0.87	0.89	0.84

36	Bath towel	each	17.90	17.90	15.90	12.67	12.67	14.87
37	PVC pipe (20 ft)	0.5 inch	12.13	11.64	10.18	10.18	9.98	10.24
38	Kerosene stove (2 burners)	each	151.84	150.64	148.94	148.94	156.14	156.14
39	Kettle (aluminium)	24 cm	32.13	32.13	27.90	29.90	29.90	27.20
40	Paracetamol (500g)	20 tab pkg	1.83	1.83	2.83	2.83	2.83	2.17
41	Petrol (unleaded)	1 ltr	2.72	2.77	2.91	2.39	1.97	2.05
42	Diesel	1 ltr	2.82	2.86	3.06	2.64	2.39	2.35
43	Kerosene	1 ltr	2.72	2.70	2.95	2.59	2.49	2.45
44	Engine oil	1 pint	4.67	4.67	4.83	4.83	4.83	5.00
45	Washing soap (yellow)	bar	2.90	2.80	3.18	3.26	3.11	2.95
46	Toilet soap (Lux)	100 gm	1.07	1.07	1.13	1.13	1.13	1.08

(a) : Provisional figures

Table 3. IMPORTED GOODS COMPONENT OF THE CONSUMER PRICE INDEX**(Base Period : Average Prices March 2004 = 100)**

Group	All Items	Food	Clothing and Footwear	Housing and Household Operations	Transport and Communications	Alcohol and Tobacco	Miscellaneous
<i>Weights</i>	437	288	20	48	30	17	35
2005	104.5	103.1	88.8	110.8	122.6	98.9	102.9
2006	109.2	107.3	85.0	113.9	140.1	104.8	108.0
2007	116.7	116.7	82.3	115.7	145.2	115.2	114.4
2008	133.3	133.2	83.9	129.5	194.6	119.3	122.0
2008							
February	122.6	121.9	82.3	121.5	167.1	120.2	116.5
March	124.4	122.8	82.5	122.3	182.5	120.2	116.5
April	125.9	123.7	82.8	124.4	192.0	120.2	116.5
May	127.9	126.0	82.8	127.2	196.4	114.4	117.7
June	131.8	129.2	83.5	129.8	207.4	120.1	124.2
July	135.4	131.8	83.5	137.6	221.9	120.1	125.0
August	137.5	134.4	83.5	138.4	226.4	120.1	125.0
September	139.4	139.3	84.2	136.6	210.1	118.6	125.0
October	142.4	144.6	83.8	134.6	204.1	119.0	126.7
November	144.7	149.5	86.5	131.0	193.9	119.0	126.8
December	145.6	153.7	88.6	129.3	168.8	119.0	127.1
2009							
January	142.8	151.7	88.7	128.4	148.9	119.0	127.1
February (a)	140.1	147.8	89.2	128.3	152.3	118.2	122.3
September (a)	109.5	106.7	83.9	114.9	152.2	103.7	106.1
<u>Percentage Change (a)</u>							
Feb 2009 over Jan 2009	-1.9	-2.6	0.6	-0.1	2.3	-0.7	-3.8
Feb 2009 over Feb 2008	14.3	21.2	8.4	5.6	-8.9	-1.7	5.0
IMPORTED ITEMS UNDERLYING INDEX							
Group	All Items	Food	Clothing and Footwear	Housing and Household Operations	Transport and Communications	Alcohol and Tobacco	Miscellaneous
<i>Weights</i>	385	288	20	40	2	<i>n.a.</i>	35
2005	102.6	103.1	88.8	105.4	107.0		102.9
2006	105.9	107.3	85.0	104.3	107.8		108.0
2007	113.7	116.7	82.3	106.8	113.1		114.4
2008	127.5	133.2	83.9	112.1	154.4		121.9
2008							
February	117.9	121.9	82.3	107.8	139.9		116.5

March	118.8	122.8	82.5	109.9	140.6	116.5
April	119.6	123.7	82.8	109.4	164.6	116.5
May	121.4	126.0	82.8	109.6	160.1	117.7
June	124.5	129.2	83.5	110.1	159.1	124.2
July	126.8	131.8	83.5	112.9	158.4	125.0
August	128.7	134.4	83.5	112.9	158.4	125.0
September	132.7	139.3	84.2	114.8	159.1	125.0
October	136.9	144.6	83.8	115.9	159.1	126.7
November	140.6	149.5	86.5	115.7	159.1	126.8
December	144.2	153.7	88.6	118.5	159.1	127.1
2009						
January	142.7	151.7	88.7	118.8	159.1	127.1
February (a)	139.5	147.8	89.2	119.2	159.1	122.3
<u>Percentage Change (a)</u>						
Feb 2009 over Jan 2009	-2.2	-2.6	0.6	0.3	0.0	-3.8
Jan 2009 over Jan 2008	18.3	21.2	8.4	10.6	13.7	5.0

(a): Provisional figures

Note: n.a. Not applicable

Table 4. LOCAL GOODS COMPONENT OF THE CONSUMER PRICE INDEX
(Base Period : Average Prices March 2004 = 100)

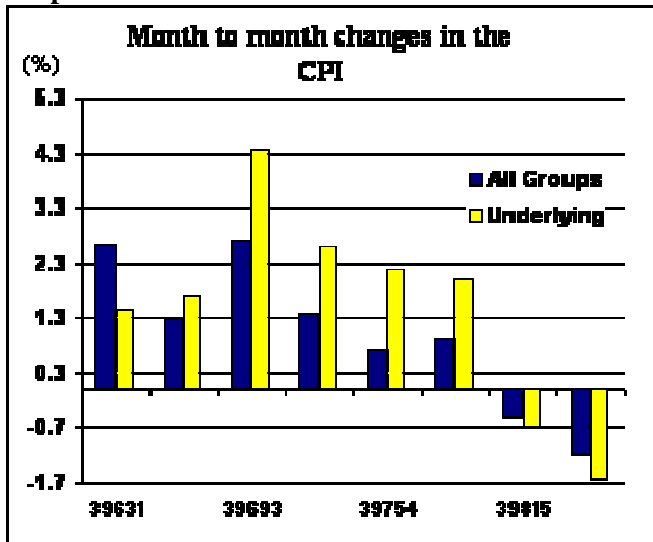
Group	All Items	Food	Housing and Household Operations	Transport and Communications	Alcohol and Tobacco	Miscellaneous
<i>Weights</i>	563	215	64	114	105	65
2005	99.9	95.7	105.4	104.3	100.4	100.0
2006	103.0	99.4	108.9	106.5	104.8	100.0
2007	107.6	105.5	118.1	100.4	117.8	100.3
2008	117.5	120.3	128.2	105.8	123.5	108.8
2008						
February	112.0	112.3	121.7	100.5	119.9	108.8
March	111.4	110.8	121.8	100.3	119.9	108.8
April	111.7	109.7	126.2	100.3	121.2	108.8
May	111.1	109.9	123.2	100.3	119.9	108.3
June	115.0	118.1	126.0	101.9	120.4	108.3
July	117.8	122.6	125.9	103.4	124.7	108.3
August	119.0	120.5	138.5	105.3	125.1	109.2
September	123.6	127.8	138.6	113.3	126.1	109.2
October	124.4	130.8	134.6	113.6	126.4	109.2
November	124.3	128.9	134.6	113.6	129.3	109.2
December	125.7	133.6	126.8	116.7	128.6	109.2
2009						
January	126.6	135.3	128.5	116.7	128.6	110.4
February (a)	125.9	134.3	124.4	116.5	128.6	111.6
<u>Percentage Change (a)</u>						
Feb 2009 over Jan 2009	-0.6	-0.7	-3.2	-0.2	0.0	1.1
Feb 2009 over Feb 2008	12.4	19.6	2.2	15.9	7.3	2.6
LOCAL ITEMS UNDERLYING INDEX						
Group	All Items	Food	Housing and Household Operations	Transport and Communications	Alcohol and Tobacco	Miscellaneous
<i>Weights</i>	129	99	15	2	<i>n.a.</i>	13
2005	103.7	104.7	100.8	100.0		100.0
2006	107.7	109.3	104.3	106.8		100.0
2007	113.5	115.5	109.6	122.0		101.3
2008	128.3	134.0	109.6	122.0		101.3

2008					
February	118.6	120.1	121.8	124.5	102.7
March	123.0	125.8	122.1	124.5	102.7
April	122.9	125.7	122.3	124.5	102.7
May	122.5	127.5	109.5	124.5	100.0
June	124.6	130.0	110.1	131.9	100.0
July	125.0	130.5	109.9	131.9	100.0
August	127.7	133.8	111.6	131.9	100.0
September	138.1	147.4	111.8	131.9	100.0
October	139.3	148.7	113.4	131.9	100.0
November	140.0	149.5	113.5	131.9	100.0
December	140.6	150.1	113.8	143.1	100.0
2009					
January	141.1	150.0	113.5	143.1	105.8
February (a)	141.6	149.9	114.7	130.6	111.7
<u>Percentage Change (a)</u>					
Feb 2009 over Jan 2009	0.4	-0.1	1.1	-8.7	5.6
Feb 2009 over Feb 2008	19.4	24.8	-5.8	4.9	8.8

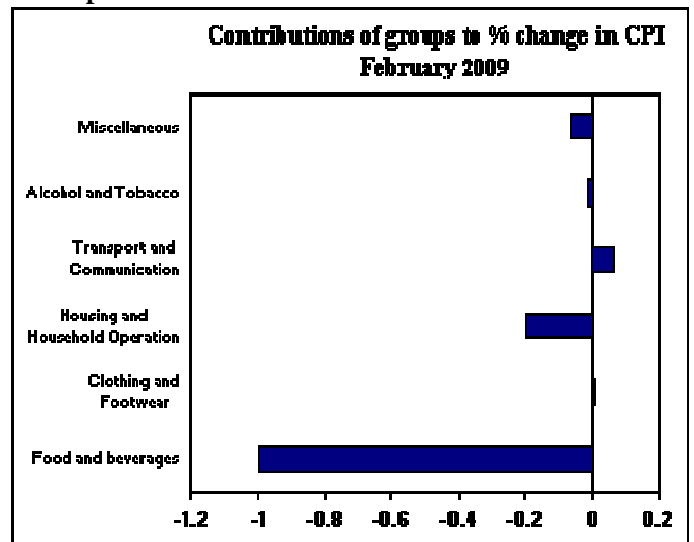
(a): Provisional figures

Note: n.a. Not applicable

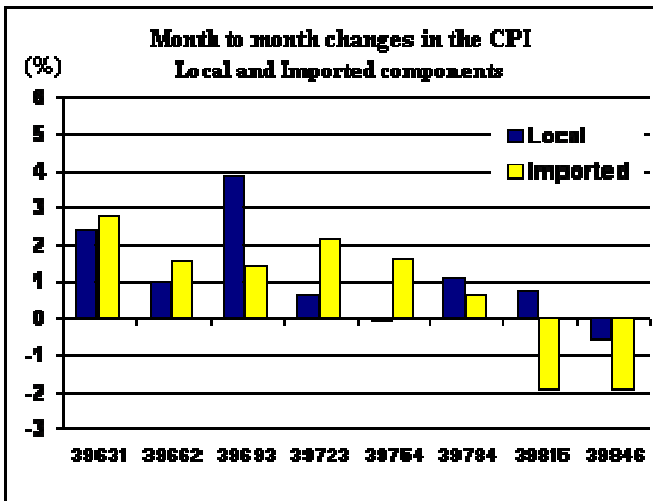
Graph.1



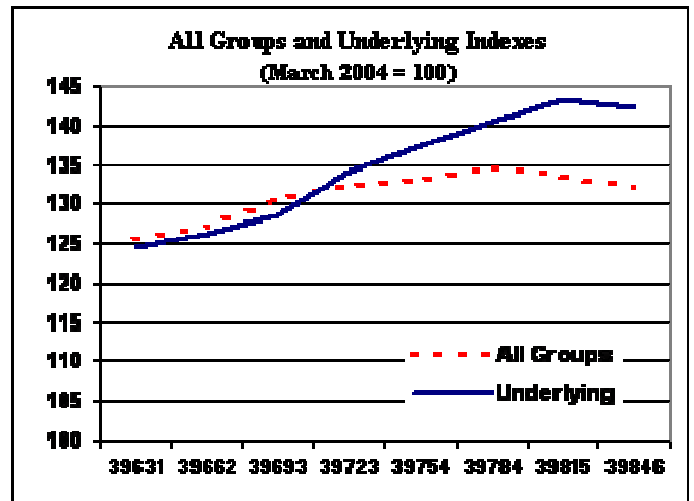
Graph.2



Graph.3



Graph.4



Graph 5

