

Please address all correspondence
To Government Statistician
In reply, please quote the file reference



File Ref: CPI 06/09

GOVERNMENT OF SAMOA

SAMOA BUREAU OF STATISTICS

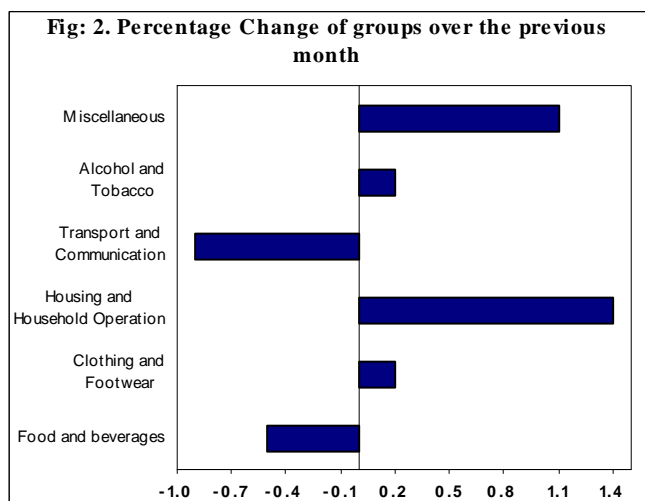
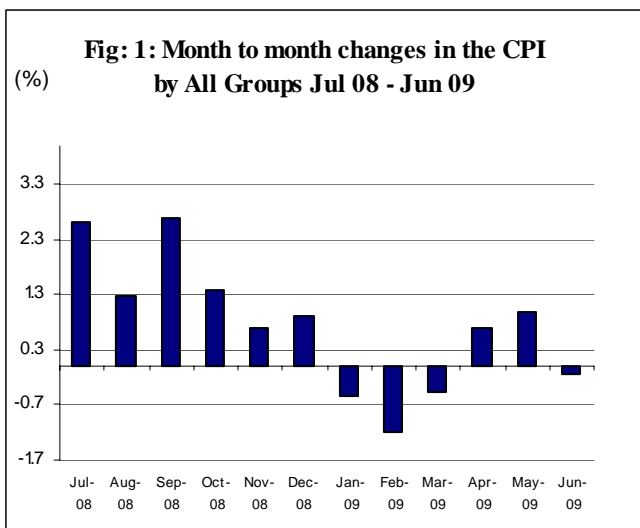
CONSUMER PRICE INDEX - June 2009 (Based Period: Average Prices March 2004 = 100)

SUMMARY

The All Items Consumer Price Index for the month of June 2009 recorded a decrease of 0.1 percent when compared to the previous month, and an increase of 9.2 percent when compared to the same month of last year. Depicted in Fig 1 are the month to month changes in the Consumer Price Index by all groups from July 08 - June 09.

0.5 percent in the Food group. Transport and Communication group also recorded a decrease of 0.9 percent. On the contrary, Housing and Household Operation and Miscellaneous group indices registered increases of 1.4 and 1.1 percent respectively, while Alcohol and Tobacco and Clothing and Footwear group indices both recorded slight increases of 0.2 percent.

Graphically presented in Fig 2 is the June 2009 percentage change of groups over May 2009.



The 0.1 percent decrease in the Overall Index is attributed mainly to a decrease of

Lower prices recorded for fresh fish (string, piece), breadfruit and some vegetables namely tomatoes, chinese and head cabbages contributed to the 0.5 percent decrease in the Food group index.



The 0.9 percent decrease in the Transport and Communication group is primarily due to lower prices recorded for fuel (unleaded, diesel).



Higher prices recorded for electricity (kwh) and roofing iron has resulted in the 1.4 percent increase in the Housing and Household Operation group index.



Increased prices recorded for cinema admission ticket is reflected in the 1.1 percent increase in the Miscellaneous group index.



The Imported component of the Consumer Price Index registered a decrease of 0.1 percent due to lower prices recorded for fuel (unleaded, diesel, kerosene), while the local component remained the same.



The All Items Underlying Index for June 2009 recorded an increase of 0.3 percent when compared to May this year, and an increase of 13.1 percent when compared to June last year. The 0.3 percent increase in the Overall Underlying Index is attributed to an increase of 0.1 percent in the imported component. The local component also increased by 0.7 percent.

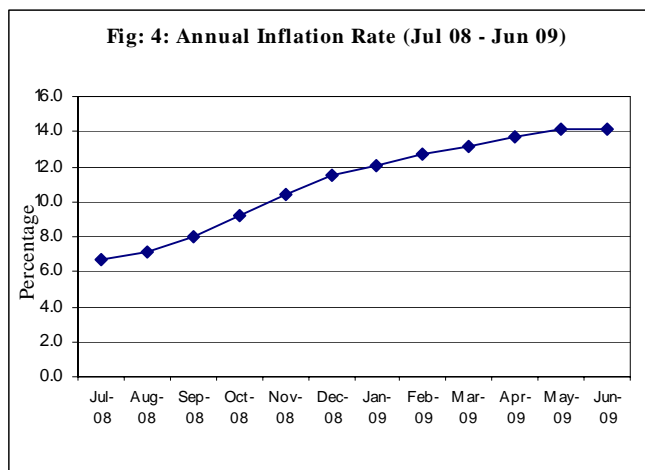
The twelve months ending June 2009 compared to the twelve months ending June 2008 shows an increase of 14.2 percent, as illustrated below in Fig 4.

The attached Tables and Graphs provide the user with more detailed analysis.

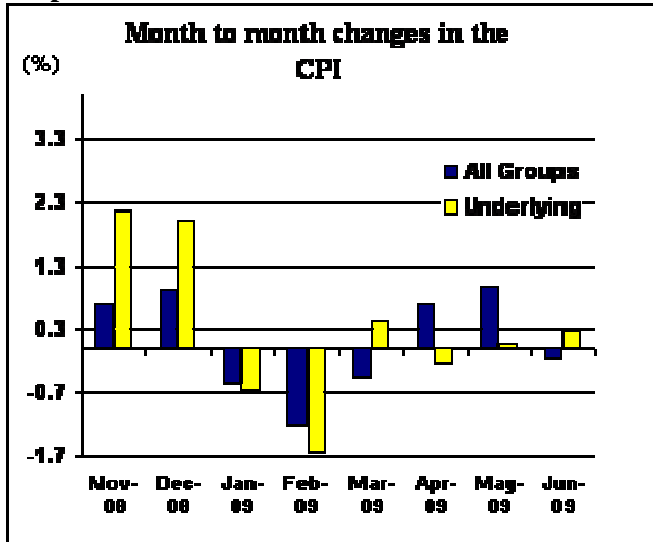


Muagututia S Reupena.

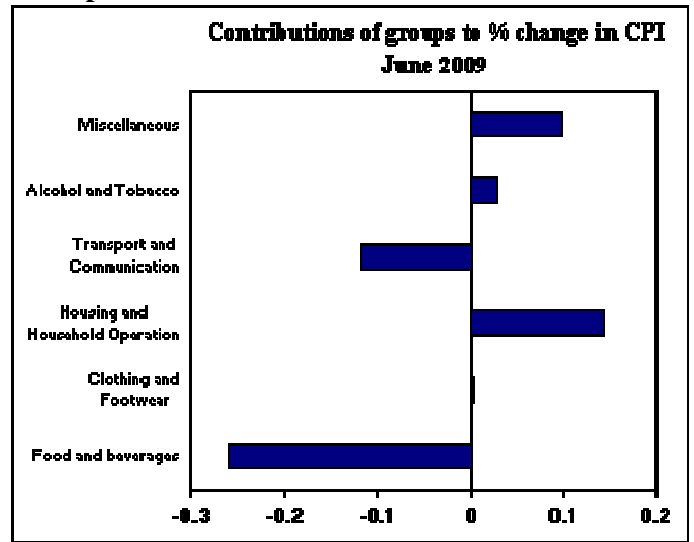
GOVERNMENT STATISTICIAN



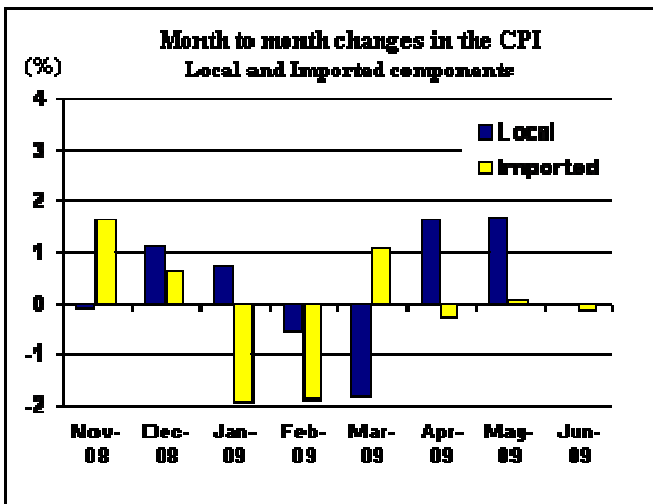
Graph.1



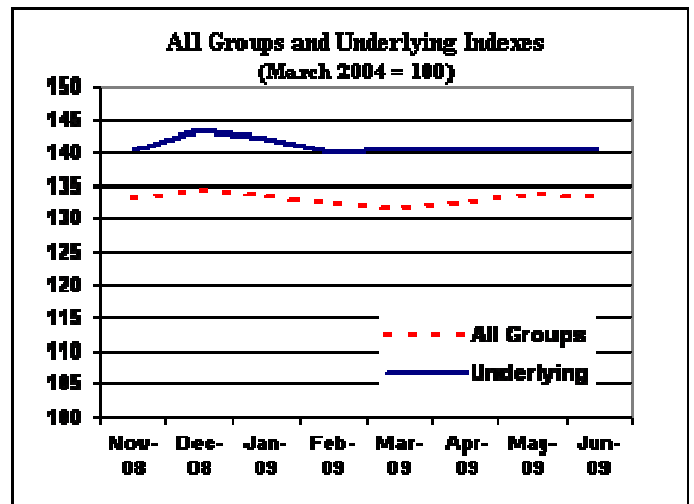
Graph.2



Graph.3



Graph.4



Graph 5

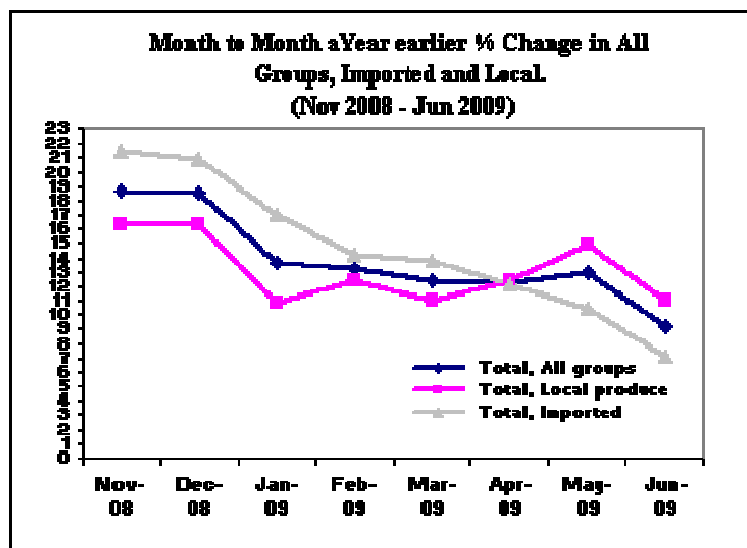


Table 1. CONSUMER PRICE INDEX.
(Base Period : Average Prices March 2004 = 100)

| Group | All Items | Food | Clothing and Footwear | Housing and Household Operations | Transport and Communications | Alcohol and Tobacco | Miscellaneous |
|-------------------------------------|-------------|------------|-----------------------|----------------------------------|------------------------------|---------------------|---------------|
| <i>Weights</i> | 1000 | 503 | 20 | 111 | 144 | 122 | 100 |
| 2005 | 101.9 | 99.9 | 88.8 | 107.7 | 108.1 | 100.2 | 101.0 |
| 2006 | 105.7 | 103.9 | 85.0 | 111.0 | 113.5 | 104.8 | 102.8 |
| 2007 | 111.6 | 111.9 | 82.3 | 117.1 | 109.7 | 117.4 | 105.2 |
| 2008 | 124.4 | 127.7 | 83.9 | 128.8 | 124.3 | 122.9 | 113.4 |
| 2008 | | | | | | | |
| June | 122.3 | 124.4 | 83.5 | 127.6 | 123.8 | 120.4 | 113.8 |
| July | 125.5 | 127.9 | 83.5 | 130.9 | 128.1 | 124.1 | 114.1 |
| August | 127.1 | 128.4 | 83.5 | 138.5 | 130.5 | 124.4 | 114.7 |
| September | 130.5 | 134.4 | 84.2 | 137.7 | 133.5 | 125.0 | 114.7 |
| October | 132.3 | 138.7 | 83.8 | 134.6 | 132.5 | 125.4 | 115.3 |
| November | 133.2 | 140.7 | 86.5 | 133.1 | 130.4 | 127.9 | 115.3 |
| December | 134.4 | 145.1 | 88.6 | 127.9 | 127.5 | 127.3 | 115.5 |
| 2009 | | | | | | | |
| January | 133.7 | 144.6 | 88.7 | 128.4 | 123.4 | 127.3 | 116.2 |
| February | 132.1 | 142.0 | 89.2 | 126.1 | 124.0 | 127.2 | 115.4 |
| March | 131.5 | 140.3 | 89.0 | 124.9 | 126.5 | 127.4 | 115.4 |
| April | 132.4 | 142.7 | 88.5 | 123.2 | 125.9 | 127.7 | 114.8 |
| May | 133.7 | 145.4 | 88.8 | 121.6 | 126.6 | 127.7 | 114.5 |
| June (a) | 133.5 | 144.7 | 89.0 | 123.3 | 125.5 | 128.0 | 115.8 |
| <u>Percentage Change (a)</u> | | | | | | | |
| Jun 2009 over May 2009 | -0.1 | -0.5 | 0.2 | 1.4 | -0.9 | 0.2 | 1.1 |
| Jun 2009 over Jun 2008 | 9.2 | 16.3 | 6.6 | -3.4 | 1.4 | 6.3 | 1.8 |
| ALL ITEMS UNDERLYING INDEX | | | | | | | |
| Group | All Items | Food | Clothing and Footwear | Housing and Household Operations | Transport and Communications | Alcohol and Tobacco | Miscellaneous |
| <i>Weights</i> | 514 | 387 | 20 | 55 | 4 | n.a. | 48 |
| 2005 | 102.9 | 103.5 | 88.8 | 104.1 | 103.4 | | 102.1 |
| 2006 | 106.3 | 107.8 | 85.0 | 104.3 | 107.3 | | 105.8 |
| 2007 | 113.6 | 116.4 | 82.3 | 107.5 | 117.7 | | 110.7 |
| 2008 | 127.7 | 133.4 | 83.9 | 112.8 | 141.8 | | 116.1 |
| 2008 | | | | | | | |
| June | 124.5 | 129.4 | 83.5 | 110.1 | 145.1 | | 117.5 |
| July | 126.3 | 131.5 | 83.5 | 112.1 | 144.8 | | 118.0 |
| August | 128.5 | 134.2 | 83.5 | 112.5 | 144.8 | | 118.0 |
| September | 134.0 | 141.4 | 84.2 | 114.0 | 145.2 | | 118.0 |

| | | | | | | |
|-------------------------------------|-------|-------|------|-------|-------|-------|
| October | 137.5 | 145.7 | 83.8 | 115.2 | 145.2 | 119.2 |
| November | 140.5 | 149.5 | 86.5 | 115.1 | 145.2 | 119.4 |
| December | 143.3 | 152.7 | 88.6 | 117.2 | 150.9 | 119.6 |
| 2009 | | | | | | |
| January | 142.3 | 151.2 | 88.7 | 117.3 | 150.9 | 121.2 |
| February | 140.0 | 148.3 | 89.2 | 118.0 | 144.4 | 119.4 |
| March | 140.6 | 149.1 | 89.0 | 118.3 | 144.2 | 119.4 |
| April | 140.3 | 149.0 | 88.5 | 117.7 | 144.2 | 118.2 |
| May | 140.4 | 149.4 | 88.8 | 116.1 | 142.1 | 117.6 |
| June (a) | 140.8 | 149.5 | 89.0 | 118.1 | 150.9 | 117.7 |
| <u>Percentage Change (a)</u> | | | | | | |
| Jun 2009 over May 2009 | 0.3 | 0.1 | 0.2 | 1.7 | 6.2 | 0.1 |
| Jun 2009 over Jun 2008 | 13.1 | 15.5 | 6.6 | 7.3 | 4.0 | 0.2 |

(a): Provisional figures

Note: n.a. Not applicable

Table 2. AVERAGE RETAIL PRICES OF SELECTED COMMODITIES

| Commodities | Unit | 2008 | | | 2009 | | |
|---|-----------|-------|-------|-------|-------|-------|---------|
| | | Apr | May | June | Apr | May | Jun (a) |
| 1 Flour | 1 lb | 1.01 | 1.04 | 1.23 | 1.48 | 1.39 | 1.48 |
| 2 Rice | 1 lb | 1.19 | 1.16 | 1.23 | 2.22 | 2.22 | 2.22 |
| 3 Brown sugar | 1 lb | 0.90 | 0.90 | 0.87 | 1.07 | 1.10 | 1.10 |
| 4 Salt | 1 lb | 0.68 | 0.69 | 0.69 | 0.72 | 0.71 | 0.67 |
| 5 Taamu | 1 lb | 1.13 | 1.25 | 1.41 | 1.91 | 2.15 | 2.14 |
| 6 Breadfruit | 1 lb | 0.27 | 0.55 | 0.52 | 0.72 | 0.78 | 0.62 |
| 7 Potatoes | 1 lb | 1.51 | 1.60 | 1.70 | 1.31 | 1.29 | 1.33 |
| 8 Onions | 1 lb | 1.36 | 1.38 | 1.44 | 1.30 | 1.29 | 1.19 |
| 9 Taro | 1 lb | 1.13 | 1.16 | 1.69 | 1.51 | 1.70 | 1.78 |
| 10 Yam | 1 lb | 1.22 | 1.24 | 1.37 | 1.31 | 1.44 | 1.82 |
| 11 Chinese Cabbage | 1 lb | 2.44 | 1.53 | 1.48 | 3.20 | 3.29 | 2.71 |
| 12 Head Cabbage | 1 lb | 4.59 | 2.37 | 2.45 | 3.59 | 5.28 | 3.46 |
| 13 Cucumbers | 1 lb | 1.15 | 1.05 | 1.36 | 1.55 | 1.71 | 1.72 |
| 14 Pumpkins | 1 lb | 0.79 | 0.81 | 1.05 | 0.78 | 1.17 | 1.26 |
| 15 Water Cress | 1 lb | 2.52 | 2.74 | 3.10 | 3.54 | 3.93 | 4.95 |
| 16 Tomatoes | 1 lb | 3.72 | 4.07 | 3.18 | 4.32 | 5.88 | 5.14 |
| 17 Taro leaves | 1 lb | 2.67 | 2.84 | 2.74 | 2.00 | 3.06 | 3.15 |
| 18 Bananas | 1 lb | 0.52 | 0.49 | 0.60 | 0.80 | 0.74 | 0.71 |
| 19 Coconuts | 1 lb | 0.20 | 0.21 | 0.21 | 0.21 | 0.24 | 0.22 |
| 20 String Fish | 1 lb | 3.46 | 3.57 | 4.15 | 3.89 | 4.26 | 3.88 |
| 21 Large Fish | 1lb | 4.43 | 4.64 | 6.47 | 6.35 | 5.93 | 6.35 |
| 22 Fish (piece) | 1lb | 4.10 | 4.62 | 3.96 | 5.69 | 5.06 | 4.87 |
| 23 Mutton Flaps | 1 lb | 3.88 | 3.86 | 3.88 | 4.36 | 4.36 | 4.37 |
| 24 Mutton Neck | 1 lb | 3.48 | 3.46 | 3.46 | 3.54 | 3.64 | 3.64 |
| 25 Turkey Wings | 1 lb | 2.49 | 2.51 | 2.72 | 2.75 | 2.94 | 2.94 |
| 26 Chicken leg quarters | 1 lb | 2.15 | 2.29 | 2.30 | 2.24 | 2.27 | 2.26 |
| 27 Pig Trotter | 1 lb | 2.69 | 2.69 | 2.78 | 2.94 | 2.88 | 2.91 |
| 28 Dressing Material (poplin 45inch) | 1yard | 3.23 | 3.23 | 3.33 | 3.34 | 3.53 | 3.52 |
| 29 Shirt short sleeve white (children) | 32 size | 12.55 | 12.55 | 12.55 | 13.67 | 14.67 | 14.67 |
| 30 Shirt long sleeve (white) | 16.5 size | 21.51 | 21.51 | 21.51 | 21.51 | 23.08 | 23.08 |
| 31 le Solosolo | 2yds | 5.68 | 5.68 | 5.68 | 6.12 | 6.15 | 6.15 |
| 32 Children shirt (short sleeve) | 32 size | 12.55 | 12.55 | 12.55 | 13.67 | 14.67 | 14.67 |
| 33 Sandal (ladies) | 8 size | 29.98 | 29.98 | 29.98 | 27.68 | 27.68 | 27.68 |
| 34 Electricity | kwh | 0.84 | 0.84 | 0.87 | 0.81 | 0.80 | 0.82 |
| 35 Natural gas | 20lb | 63.00 | 63.00 | 63.00 | 73.38 | 68.70 | 68.70 |
| 36 Roofing Iron | 12ft | 44.88 | 48.18 | 48.18 | 54.48 | 54.48 | 60.78 |
| 37 PVC pipe (20 ft) | 0.5 inch | 11.24 | 11.24 | 12.04 | 11.26 | 11.20 | 11.04 |
| 38 Kettle (aluminium) | 24 cm | 27.90 | 27.90 | 28.55 | 29.37 | 29.37 | 32.30 |
| 39 Petrol (unleaded) | 1 ltr | 2.87 | 2.94 | 3.15 | 2.30 | 2.36 | 2.23 |

| | | | | | | | | |
|----|-----------------------|------------|------|------|------|------|------|------|
| 40 | Diesel | 1 ltr | 3.03 | 3.26 | 3.56 | 2.13 | 2.28 | 2.16 |
| 41 | Kerosene | 1 ltr | 2.84 | 3.07 | 3.27 | 2.19 | 2.12 | 2.07 |
| 42 | Cinema Admission | adult | 6.00 | 6.00 | 6.00 | 6.00 | 6.00 | 8.00 |
| 43 | Telephone (NZ call) | 3 mins | 2.67 | 2.67 | 2.67 | 2.55 | 2.55 | 2.67 |
| 44 | Paracetamol | 20 tab pkt | 1.83 | 2.00 | 2.67 | 2.17 | 1.83 | 1.83 |
| 45 | Washing soap (yellow) | bar | 2.88 | 2.91 | 3.00 | 3.15 | 3.15 | 3.08 |
| 46 | Toilet soap (Lux) | 100 grm | 1.07 | 1.07 | 1.14 | 1.14 | 1.21 | 1.23 |

(a) : Provisional figures

Table 3. IMPORTED GOODS COMPONENT OF THE CONSUMER PRICE INDEX
(Base Period : Average Prices March 2004 =
100)

| Group | All Items | Food | Clothing and Footwear | Housing and Household Operations | Transport and Communications | Alcohol and Tobacco | Miscellaneous |
|--|------------|------------|-----------------------|----------------------------------|------------------------------|---------------------|---------------|
| <i>Weights</i> | 437 | 288 | 20 | 48 | 30 | 17 | 35 |
| 2005 | 104.5 | 103.1 | 88.8 | 110.8 | 122.6 | 98.9 | 102.9 |
| 2006 | 109.2 | 107.3 | 85.0 | 113.9 | 140.1 | 104.8 | 108.0 |
| 2007 | 116.7 | 116.7 | 82.3 | 115.7 | 145.2 | 115.2 | 114.4 |
| 2008 | 133.3 | 133.2 | 83.9 | 129.5 | 194.6 | 119.3 | 122.0 |
| 2008 | | | | | | | |
| May | 127.9 | 126.0 | 82.8 | 127.2 | 196.4 | 114.4 | 117.7 |
| June | 131.8 | 129.2 | 83.5 | 129.8 | 207.4 | 120.1 | 124.2 |
| July | 135.4 | 131.8 | 83.5 | 137.6 | 221.9 | 120.1 | 125.0 |
| August | 137.5 | 134.4 | 83.5 | 138.4 | 226.4 | 120.1 | 125.0 |
| September | 139.4 | 139.3 | 84.2 | 136.6 | 210.1 | 118.6 | 125.0 |
| October | 142.4 | 144.6 | 83.8 | 134.6 | 204.1 | 119.0 | 126.7 |
| November | 144.7 | 149.5 | 86.5 | 131.0 | 193.9 | 119.0 | 126.8 |
| December | 145.6 | 153.7 | 88.6 | 129.3 | 168.8 | 119.0 | 127.1 |
| 2009 | | | | | | | |
| January | 142.8 | 151.7 | 88.7 | 128.4 | 148.9 | 119.0 | 127.1 |
| February | 140.1 | 147.8 | 89.2 | 128.3 | 152.3 | 118.2 | 122.3 |
| March | 141.6 | 149.0 | 89.0 | 126.6 | 164.4 | 119.6 | 122.4 |
| April | 141.2 | 148.7 | 88.5 | 124.9 | 161.7 | 121.5 | 123.0 |
| May | 141.3 | 149.2 | 88.8 | 122.0 | 165.1 | 121.5 | 122.1 |
| June (a) | 141.1 | 149.0 | 89.0 | 123.4 | 159.2 | 123.8 | 122.3 |
| September (a) | 109.5 | 106.7 | 83.9 | 114.9 | 152.2 | 103.7 | 106.1 |
| <i>Percentage Change (a)</i> | | | | | | | |
| Jun 2009 over May 2009 | -0.1 | -0.1 | 0.2 | 1.1 | -3.6 | 1.9 | 0.2 |
| Jun 2009 over Jun 2008 | 7.1 | 15.3 | 6.6 | -4.9 | -23.2 | 3.1 | -1.5 |
| IMPORTED ITEMS UNDERLYING INDEX | | | | | | | |
| Group | All Items | Food | Clothing and Footwear | Housing and Household Operations | Transport and Communications | Alcohol and Tobacco | Miscellaneous |
| <i>Weights</i> | 385 | 288 | 20 | 40 | 2 | <i>n.a.</i> | 35 |
| 2005 | 102.6 | 103.1 | 88.8 | 105.4 | 107.0 | | 102.9 |
| 2006 | 105.9 | 107.3 | 85.0 | 104.3 | 107.8 | | 108.0 |
| 2007 | 113.7 | 116.7 | 82.3 | 106.8 | 113.1 | | 114.4 |
| 2008 | 127.5 | 133.2 | 83.9 | 112.1 | 154.4 | | 121.9 |
| 2008 | | | | | | | |
| June | 124.5 | 129.2 | 83.5 | 110.1 | 159.1 | | 124.2 |
| July | 126.8 | 131.8 | 83.5 | 112.9 | 158.4 | | 125.0 |
| August | 128.7 | 134.4 | 83.5 | 112.9 | 158.4 | | 125.0 |

| | | | | | | |
|-------------------------------------|-------|-------|------|-------|-------|-------|
| September | 132.7 | 139.3 | 84.2 | 114.8 | 159.1 | 125.0 |
| October | 136.9 | 144.6 | 83.8 | 115.9 | 159.1 | 126.7 |
| November | 140.6 | 149.5 | 86.5 | 115.7 | 159.1 | 126.8 |
| December | 144.2 | 153.7 | 88.6 | 118.5 | 159.1 | 127.1 |
| 2009 | | | | | | |
| January | 142.7 | 151.7 | 88.7 | 118.8 | 159.1 | 127.1 |
| February | 139.5 | 147.8 | 89.2 | 119.2 | 159.1 | 122.3 |
| March | 140.4 | 149.0 | 89.0 | 119.6 | 158.5 | 122.4 |
| April | 140.2 | 148.7 | 88.5 | 118.6 | 158.5 | 123.0 |
| May | 140.1 | 149.2 | 88.8 | 116.1 | 154.3 | 122.1 |
| June (a) | 140.3 | 149.0 | 89.0 | 118.5 | 168.4 | 122.3 |
| <u>Percentage Change (a)</u> | | | | | | |
| Jun 2009 over May 2009 | 0.1 | -0.1 | 0.2 | 2.1 | 9.1 | 0.2 |
| Jun 2009 over Jun 2008 | 12.7 | 15.3 | 6.6 | 7.6 | 5.8 | -1.5 |

(a): Provisional figures
Note: n.a. Not applicable

Table 4. LOCAL GOODS COMPONENT OF THE CONSUMER PRICE INDEX**(Base Period : Average Prices March 2004 = 100)**

| Group | All Items | Food | Housing and Household Operations | Transport and Communications | Alcohol and Tobacco | Miscellaneous |
|-------------------------------------|------------|------------|----------------------------------|------------------------------|---------------------|---------------|
| <i>Weights</i> | 563 | 215 | 64 | 114 | 105 | 65 |
| 2005 | 99.9 | 95.7 | 105.4 | 104.3 | 100.4 | 100.0 |
| 2006 | 103.0 | 99.4 | 108.9 | 106.5 | 104.8 | 100.0 |
| 2007 | 107.6 | 105.5 | 118.1 | 100.4 | 117.8 | 100.3 |
| 2008 | 117.5 | 120.3 | 128.2 | 105.8 | 123.5 | 108.8 |
| 2008 | | | | | | |
| June | 115.0 | 118.1 | 126.0 | 101.9 | 120.4 | 108.3 |
| July | 117.8 | 122.6 | 125.9 | 103.4 | 124.7 | 108.3 |
| August | 119.0 | 120.5 | 138.5 | 105.3 | 125.1 | 109.2 |
| September | 123.6 | 127.8 | 138.6 | 113.3 | 126.1 | 109.2 |
| October | 124.4 | 130.8 | 134.6 | 113.6 | 126.4 | 109.2 |
| November | 124.3 | 128.9 | 134.6 | 113.6 | 129.3 | 109.2 |
| December | 125.7 | 133.6 | 126.8 | 116.7 | 128.6 | 109.2 |
| 2009 | | | | | | |
| January | 126.6 | 135.3 | 128.5 | 116.7 | 128.6 | 110.4 |
| February | 125.9 | 134.3 | 124.4 | 116.5 | 128.6 | 111.6 |
| March | 123.6 | 128.6 | 123.6 | 116.5 | 128.6 | 111.6 |
| April | 125.6 | 134.7 | 121.9 | 116.4 | 128.6 | 110.4 |
| May | 127.7 | 140.4 | 121.3 | 116.4 | 128.7 | 110.4 |
| June (a) | 127.7 | 139.0 | 123.2 | 116.6 | 128.7 | 112.4 |
| <u>Percentage Change (a)</u> | | | | | | |
| Jun 2009 over May 2009 | 0.0 | -1.0 | 1.6 | 0.2 | 0.0 | 1.8 |
| Jun 2009 over Jun 2008 | 11.0 | 17.7 | -2.2 | 14.4 | 6.9 | 3.8 |
| LOCAL ITEMS UNDERLYING INDEX | | | | | | |
| Group | All Items | Food | Housing and Household Operations | Transport and Communications | Alcohol and Tobacco | Miscellaneous |
| <i>Weights</i> | 129 | 99 | 15 | 2 | <i>n.a.</i> | 13 |
| 2005 | 103.7 | 104.7 | 100.8 | 100.0 | | 100.0 |
| 2006 | 107.7 | 109.3 | 104.3 | 106.8 | | 100.0 |
| 2007 | 113.5 | 115.5 | 109.6 | 122.0 | | 101.3 |
| 2008 | 128.3 | 134.0 | 109.6 | 122.0 | | 101.3 |
| 2008 | | | | | | |
| June | 124.6 | 130.0 | 110.1 | 131.9 | | 100.0 |
| July | 125.0 | 130.5 | 109.9 | 131.9 | | 100.0 |

| | | | | | |
|-------------------------------------|-------|-------|-------|-------|-------|
| August | 127.7 | 133.8 | 111.6 | 131.9 | 100.0 |
| September | 138.1 | 147.4 | 111.8 | 131.9 | 100.0 |
| October | 139.3 | 148.7 | 113.4 | 131.9 | 100.0 |
| November | 140.0 | 149.5 | 113.5 | 131.9 | 100.0 |
| December | 140.6 | 150.1 | 113.8 | 143.1 | 100.0 |
| 2009 | | | | | |
| January | 141.1 | 150.0 | 113.5 | 143.1 | 105.8 |
| February | 141.6 | 149.9 | 114.7 | 130.6 | 111.7 |
| March | 141.2 | 149.4 | 114.9 | 130.6 | 111.7 |
| April | 140.9 | 149.6 | 115.4 | 130.6 | 105.8 |
| May | 141.1 | 149.8 | 116.1 | 130.6 | 105.8 |
| June (a) | 142.1 | 151.0 | 116.9 | 134.3 | 105.8 |
| <u>Percentage Change (a)</u> | | | | | |
| Jun 2009 over May 2009 | 0.7 | 0.8 | 0.7 | 2.8 | 0.0 |
| Jun 2009 over Jun 2008 | 14.0 | 16.2 | 6.2 | 1.8 | 5.8 |

(a): Provisional figures

Note: n.a. Not applicable