

Please address all correspondence  
To Chief Executive Officer

In reply, please quote the file reference



GOVERNMENT OF SAMOA

File Ref: (6/4/4b)

## MINISTRY OF FINANCE STATISTICAL DEPARTMENT

### CONSUMER PRICE INDEX - February 2007

(Based Period: Average Prices March 2004 = 100)

#### SUMMARY

The All Items Consumer Price Index for the month of February 2007 registered an increase of 0.8 percent when compared to the previous month, and an increase of 5.1 percent when compared to the same month of last year. The 0.8 percent increase in the overall Index attributed mainly to an increase of 4.6 percent in the Housing and Household Operation and 3.7 percent increase in the Alcohol and Tobacco group index. Food and Transport and Communication group indices recorded no change from the previous month. On the other hand, Miscellaneous and Clothing and Footwear group registered decreases of 2.3 and 1.2 percent respectively.

The local component of the Consumer Price Index registered an increase of 1.4 percent due to higher prices recorded for electricity and cigarette. The imported component exhibit a decrease of 0.1 percent due to lower prices recorded for paracetamol.

Increased prices recorded for electricity, local timber and nails resulted in the 4.6 percent increase in the Housing and Household Operation group index.

The 3.7 percent increase in the Alcohol and Tobacco group is primarily due to higher prices recorded for cigarette (pall mall filter and pall mall menthol) and Samoan Kava.

Miscellaneous group has registered a decrease of 2.3 percent due to lower prices recorded for paracetamol.

Lower prices recorded for dressing material and ie solosolo is reflected in the 1.2 percent decrease in the Clothing and Footwear group index.

The All Items Underlying Index for February 2007 shows no change when compared January this year, and an increase of 6.1 percent when compared to February last year. The 0.4 percent increase in the local component of the Underlying Index, offset a decrease of 0.1 percent in the imported component.

The twelve month ending February 2007 compared to the twelve month ending February 2006 registered an increase of 3.7 percent.

The attached Tables and Graphs provide the user with more details.



Muagututia S Reupena.

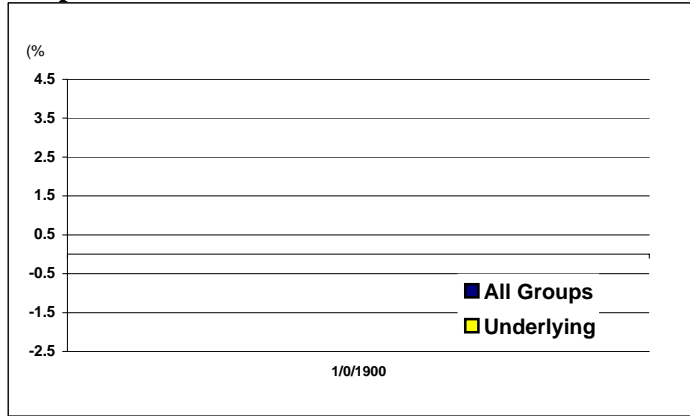
**DEPUTY CHIEF EXECUTIVE OFFICER**

Statistical Department

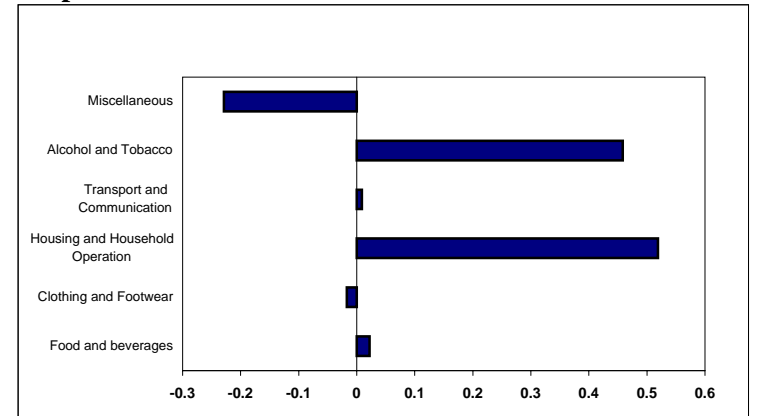
attach.

cc : Chief Executive Officer - MOF

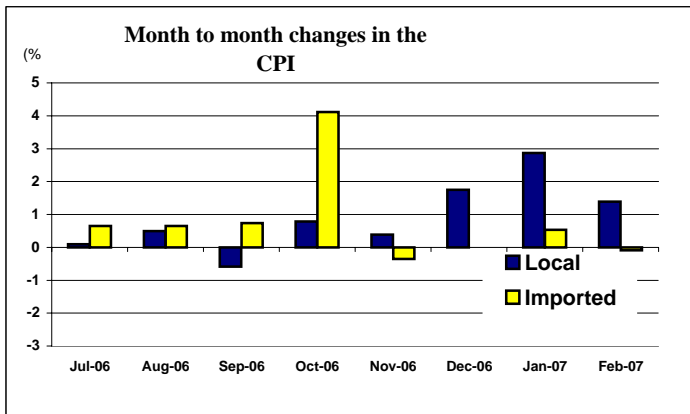
**Graph.1**



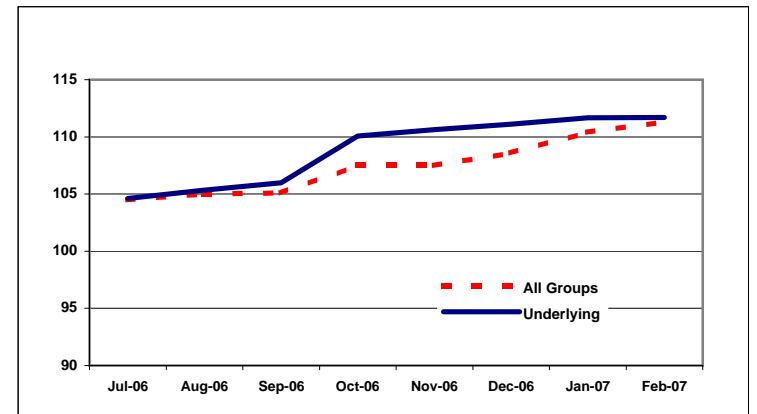
**Graph.2**



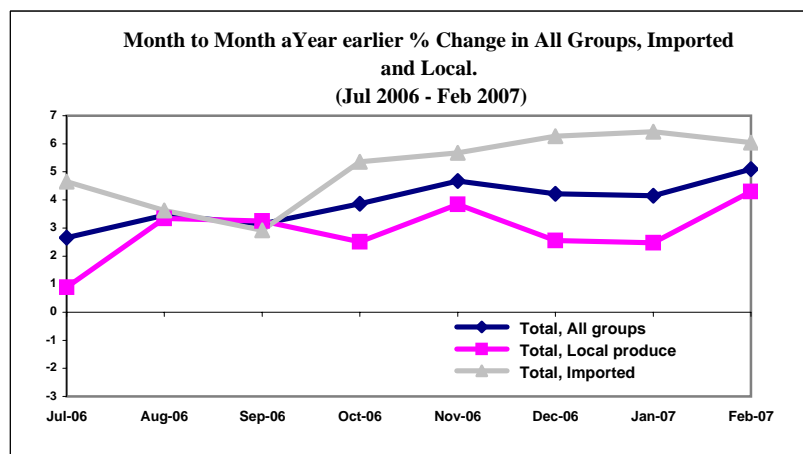
**Graph.3**



**Graph.4**



**Graph 5**



**Table 1. CONSUMER PRICE INDEX.**

**(Base Period : Average Prices March 2004 = 100)**

Group	All Items	Food	Clothing and Footwear	Housing and Household Operations	Transport and Communications	Alcohol and Tobacco	Miscellaneous
<i>Weights</i>	<b>1000</b>	<b>503</b>	<b>20</b>	<b>111</b>	<b>144</b>	<b>122</b>	<b>100</b>
2005	101.9	99.9	88.8	107.7	108.1	100.2	101.0
2006	105.8	103.9	85.0	111.0	113.9	104.8	102.8
2006							
February	105.9	105.2	84.4	110.7	115.0	100.6	101.5
March	104.3	102.1	85.2	110.4	115.4	100.6	101.5
April	105.2	103.6	85.4	110.6	116.2	100.6	101.5
May	105.3	102.7	85.7	110.9	117.8	102.3	101.5
June	104.1	101.3	85.6	111.7	114.0	102.3	101.5
July	104.5	101.7	85.3	111.3	113.9	104.1	101.7
August	105.0	102.5	84.8	111.1	113.9	105.4	102.1
September	105.1	102.5	83.9	111.5	114.0	105.4	102.1
October	107.5	105.3	84.5	112.1	112.4	111.7	105.4
November	107.5	106.0	85.1	110.9	110.3	112.0	106.0
December	108.6	108.2	84.0	110.8	109.7	111.6	107.5
2007							
January	110.4	111.7	83.9	111.0	110.7	111.9	107.0
February (a)	111.3	111.7	82.9	116.1	110.7	116.0	104.5
<b><u>Percentage Change (a)</u></b>							
Feb 2007 over Jan 2007	0.8	0.0	-1.2	4.6	0.0	3.7	-2.3
Feb 2007 over Feb 2006	5.1	6.2	-1.8	4.9	-3.7	15.3	3.0
<b>ALL ITEMS UNDERLYING INDEX</b>							
Group	All Items	Food	Clothing and Footwear	Housing and Household Operations	Transport and Communications	Alcohol and Tobacco	Miscellaneous
<i>Weights</i>	<b>514</b>	<b>387</b>	<b>20</b>	<b>55</b>	<b>4</b>	<b>n.a.</b>	<b>48</b>
2005	102.9	103.5	88.8	104.1	103.4		102.1
2006	106.3	107.8	85.0	104.3	107.3		105.8
2006							
February	105.3	106.7	84.4	105.1	103.3		103.0
March	104.9	106.3	85.2	104.0	105.4		103.0
April	104.8	106.1	85.4	104.3	105.4		103.0
May	104.1	105.2	85.7	103.9	105.4		103.1
June	103.8	104.8	85.6	104.0	108.0		103.0
July	104.6	105.8	85.3	103.8	107.2		103.4
August	105.3	106.8	84.8	103.0	108.1		104.4
September	106.0	107.7	83.9	103.6	109.1		104.4
October	110.1	112.0	84.5	104.7	110.7		111.1
November	110.6	112.6	85.1	104.6	110.7		112.4
December	111.1	112.8	84.0	105.2	110.7		115.5
2007							
January	111.7	113.7	83.9	105.4	110.7		114.6
February (a)	111.7	114.3	82.9	106.1	110.3		109.3
<b><u>Percentage Change (a)</u></b>							
Feb 2007 over Jan 2007	0.0	0.5	-1.2	0.7	-0.4		-4.6
Feb 2007 over Feb 2006	6.1	7.1	-1.8	1.0	6.8		6.1

(a): Provisional figures

Note: n.a. Not applicable

**Table 2. AVERAGE RETAIL PRICES OF SELECTED COMMODITIES**

Commodities	Unit	2005	2006			2007	
		Dec	Jan	Feb	Dec	Jan	Feb (a)
1. Biscuits	5lb carton	14.36	14.36	14.36	15.28	15.68	15.53
2. Bread	1 loaf	1.09	1.09	1.10	1.13	1.13	1.14
3. Flour	1 lb	0.77	0.80	0.80	0.86	0.87	0.82
4. Rice	1 lb	0.89	1.00	1.00	1.09	1.13	1.13
5. Eggs	1 doz	4.16	4.11	4.41	4.66	5.00	5.33
6. Butter	1 lb	5.54	5.55	5.55	5.57	5.61	5.61
7. Vegetable Oil	500 grm	2.82	2.82	2.82	2.83	2.73	2.73
8. Taamu	1 lb	0.86	0.99	0.83	1.11	1.20	0.92
9. Potatoes	1 lb	1.24	1.21	1.29	1.39	1.46	1.54
10. Taro	1 lb	0.84	0.83	0.85	0.99	1.09	1.00
11. Yam	1 lb	1.42	1.53	1.26	1.34	1.36	1.36
12. Chinese Cabbage	1 lb	2.33	2.86	3.63	2.49	3.33	3.81
13. Cucumbers	1 lb	1.07	1.21	1.78	1.21	1.25	1.44
14. Taro Leaves	1 lb	2.47	2.43	2.13	3.07	2.48	2.67
15. Onions	1 lb	1.07	1.11	1.10	1.31	1.39	1.35
16. Pumpkins	1 lb	0.70	1.00	1.45	0.56	0.70	1.07
17. Tomatoes	1 lb	2.91	5.24	5.63	2.71	4.06	5.09
18. Bananas	1 lb	0.33	0.38	0.39	0.44	0.39	0.35
19. Breadfruit	1 lb	0.44	0.34	0.38	0.89	0.24	0.20
20. Coconuts	1 lb	0.25	0.22	0.22	0.20	0.21	0.18
21. Canned fish	15 oz can	2.12	2.13	2.13	2.35	2.34	2.35
22. Fresh Fish	1lb	4.83	7.04	4.84	5.02	6.47	6.06
23. Canned Beef	12 oz can	8.13	8.18	8.18	8.61	8.48	8.53
24. Mutton Flaps	1 lb	2.74	2.93	3.01	3.26	3.26	3.31
25. Turkey Tails	1 lb	1.79	1.79	1.79	2.04	2.04	2.05
26. Chicken leg quarters	1 lb	2.19	2.09	1.99	2.04	2.01	2.03
27. Koko Samoa	small cup	4.11	4.19	4.19	4.86	4.71	4.21
28. Coffee (local)	100 grm pkt	3.90	3.90	3.88	3.88	3.90	3.88
29. Tea	0.5 lb	2.81	2.81	2.81	2.56	2.58	2.69
30. Brown sugar	1 lb	0.82	0.81	0.81	0.82	0.85	0.85
31. Salt	1 lb	0.52	0.53	0.52	0.53	0.54	0.53
32. Electricity	kwh	0.69	0.69	0.69	0.69	0.69	0.79
33. Kerosene	1 ltr	2.04	2.02	2.14	2.16	2.17	2.13
34. Petrol	1 ltr	2.15	2.08	2.13	2.12	2.15	2.17
35. Diesel	1 ltr	2.18	2.11	2.19	2.28	2.27	2.19
36. Beer (Vailima)	350 mls	3.11	3.11	3.11	3.51	3.51	3.53
37. Cigarettes (Rothmans)	1 pkt	5.94	5.94	5.94	6.40	6.40	7.03

(a): Provisional figures

**Table 3. IMPORTED GOODS COMPONENT OF THE CONSUMER PRICE INDEX****(Base Period : Average Prices March 2004 = 100)**

Group	All Items	Food	Clothing and Footwear	Housing and Household Operations	Transport and Communications	Alcohol and Tobacco	Miscellaneous
<i>Weights</i>	<b>437</b>	<b>288</b>	<b>20</b>	<b>48</b>	<b>30</b>	<b>17</b>	<b>35</b>
2005	104.5	103.1	88.8	110.8	122.6	98.9	102.9
2006	109.2	107.3	85.0	113.9	140.1	104.8	108.0
2006							
February	107.6	106.8	84.4	113.3	129.6	99.2	104.2
March	106.8	105.5	85.2	112.9	131.2	99.2	104.2
April	107.0	105.3	85.4	113.5	135.5	99.2	104.2
May	106.8	104.1	85.7	113.6	142.4	101.9	104.3
June	107.3	103.5	85.6	115.7	151.6	101.9	104.2
July	108.0	104.6	85.3	114.5	151.4	103.7	104.8
August	108.7	105.7	84.8	113.9	151.6	103.7	106.1
September	109.5	106.7	83.9	114.9	152.2	103.7	106.1
October	114.0	112.3	84.5	116.1	144.3	116.1	115.4
November	113.6	112.9	85.1	113.3	134.0	116.1	117.2
December	113.6	113.1	84.0	113.0	131.2	113.3	121.5
2007							
January	114.2	113.9	83.9	113.3	132.0	113.3	120.2
February (a)	114.1	114.6	82.9	113.3	132.6	112.7	112.9
<b><u>Percentage Change (a)</u></b>							
Feb 2007 over Jan 2007	-0.1	0.6	-1.2	0.0	0.5	-0.5	-6.1
Feb 2007 over Feb 2006	6.0	7.3	-1.8	0.0	2.3	13.6	8.3
<b>IMPORTED ITEMS UNDERLYING INDEX</b>							
Group	All Items	Food	Clothing and Footwear	Housing and Household Operations	Transport and Communications	Alcohol and Tobacco	Miscellaneous
<i>Weights</i>	<b>385</b>	<b>288</b>	<b>20</b>	<b>40</b>	<b>2</b>	<i>n.a.</i>	<b>35</b>
2005	102.6	103.1	88.8	105.4	107.0		102.9
2006	105.9	107.3	85.0	104.3	107.8		108.0
2006							
February	105.3	106.8	84.4	105.5	106.7		104.2
March	104.2	105.5	85.2	104.4	106.7		104.2
April	104.1	105.3	85.4	104.8	106.7		104.2
May	103.1	104.1	85.7	103.9	106.7		104.3
June	102.7	103.5	85.6	104.1	107.7		104.2
July	103.5	104.6	85.3	103.7	106.1		104.8
August	104.3	105.7	84.8	102.4	107.9		106.1
September	105.1	106.7	83.9	103.2	110.0		106.1
October	110.3	112.3	84.5	104.5	109.4		115.4
November	110.9	112.9	85.1	104.3	109.4		117.2
December	111.4	113.1	84.0	105.0	109.2		121.5
2007							
January	112.0	113.9	83.9	105.2	109.2		120.2
February (a)	111.9	114.6	82.9	105.7	108.5		112.9
<b><u>Percentage Change (a)</u></b>							
Feb 2007 over Jan 2007	-0.1	0.6	-1.2	0.5	-0.6		-6.1
Feb 2007 over Feb 2006	6.3	7.3	-1.8	0.2	1.7		8.3

(a): Provisional figures

Note: n.a. Not applicable

**Table 4. LOCAL GOODS COMPONENT OF THE CONSUMER PRICE INDEX**

**(Base Period : Average Prices March 2004 = 100)**

Group	All Items	Food	Housing and Household Operations	Transport and Communications	Alcohol and Tobacco	Miscellaneous
<i>Weights</i>	<b>563</b>	<b>215</b>	<b>64</b>	<b>114</b>	<b>105</b>	<b>65</b>
2005	99.9	95.7	105.4	104.3	100.4	100.0
2006	103.1	99.4	108.9	107.0	104.8	100.0
2006						
February	104.6	103.1	108.8	111.1	100.8	100.0
March	102.4	97.4	108.6	111.2	100.8	100.0
April	103.9	101.2	108.5	111.2	100.8	100.0
May	104.1	100.9	108.8	111.4	102.3	100.0
June	101.6	98.3	108.7	104.1	102.4	100.0
July	101.7	97.8	108.8	104.0	104.2	100.0
August	102.2	98.2	109.0	103.9	105.7	100.0
September	101.6	96.8	109.0	103.9	105.7	100.0
October	102.4	96.0	109.2	104.0	111.0	100.0
November	102.8	96.9	109.1	104.0	111.4	100.0
December	104.6	101.7	109.1	104.0	111.3	100.0
2007						
January	107.6	108.7	109.2	105.1	111.7	100.0
February (a)	109.1	107.8	118.3	105.0	116.6	100.0
<b><u>Percentage Change (a)</u></b>						
Feb 2007 over Jan 2007	1.4	-0.8	8.3	-0.1	4.4	0.0
Feb 2007 over Feb 2006	4.3	4.6	8.7	-5.5	15.7	0.0
<b>LOCAL ITEMS UNDERLYING INDEX</b>						
Group	All Items	Food	Housing and Household Operations	Transport and Communications	Alcohol and Tobacco	Miscellaneous
<i>Weights</i>	<b>129</b>	<b>99</b>	<b>15</b>	<b>2</b>	<i>n.a.</i>	<b>13</b>
2005	103.7	104.7	100.8	100.0		100.0
2006	107.7	109.3	104.3	106.8		100.0
2006						
February	105.4	106.5	104.0	100.0		100.0
March	106.9	108.4	103.0	104.2		100.0
April	106.8	108.4	102.9	104.2		100.0
May	107.0	108.4	104.1	104.2		100.0
June	107.0	108.4	103.8	108.3		100.0
July	107.9	109.6	104.1	108.3		100.0
August	108.5	110.2	104.7	108.3		100.0
September	108.6	110.4	104.9	108.3		100.0
October	109.4	111.2	105.5	112.0		100.0
November	109.9	111.8	105.3	112.0		100.0
December	110.1	112.1	105.5	112.0		100.0
2007						
January	110.8	113.0	105.8	112.0		100.0
February (a)	111.2	113.3	107.3	112.0		100.0
<b><u>Percentage Change (a)</u></b>						
Feb 2007 over Jan 2007	0.4	0.3	1.4	0.0		0.0
Feb 2007 over Feb 2006	5.5	6.4	3.2	12.0		0.0

(a): Provisional figures

Note: n.a. Not applicable