

Please address all correspondence
To Chief Executive Officer

In reply, please quote the file reference



GOVERNMENT OF SAMOA

File Ref: (6/4/4b)

MINISTRY OF FINANCE STATISTICAL DEPARTMENT

CONSUMER PRICE INDEX - January 2007

(Based Period: Average Prices March 2004 = 100)

SUMMARY

The All Items Consumer Price Index for the month of January 2007 shows an increase of 1.7 percent when compared to the previous month, and an increase of 4.2 percent when compared to the same month of last year. The 1.7 percent overall increase is predominantly due to an increase of 3.2 percent in the Food group index. Increases were also recorded for other groups such as Transport and Communication (0.9%), Alcohol and Tobacco (0.3%) and Housing and Household Operations (0.2%), which offset decreases of 0.5 and 0.1 percent in the Miscellaneous and Clothing and Footwear group indices.

The local and imported component of the Consumer Price Index both registered increases of 2.9 and 0.5 percent respectively, with the local component contributing 94 percent to the overall increase.

The local component shows an increase of 2.9 percent due to higher prices recorded for taro, taamu, fresh fish and vegetables. Increased prices recorded for rice, brown sugar and petrol are the main contributors to the 0.5 percent increase in the imported component.

The 0.9 percent increase in the Transport and Communication group is primarily due to higher prices recorded for unleaded fuel and mail box rental.

Higher prices recorded for Samoan Kava resulted in the 0.3 percent increase in the Alcohol and Tobacco group index.

Decreased prices recorded for medicine (paracetamol) is reflected in the 0.5 percent decrease in the Miscellaneous group index.

The All Items Underlying Index for January 2007 shows an increase of 0.5 percent when compared to December this year, and an increase of 6.1 percent when compared to January last year. The 0.5 percent increase in the All Underlying Index attributed to an increase of 0.6 percent in the local component. The imported component also increases by 0.5 percent.

The twelve month ending January 2007 compared to the twelve month ending January 2006 shows an increase of 3.7 percent.

The attached Tables and Graphs provide the user with more details.



Muagututia S Reupena.

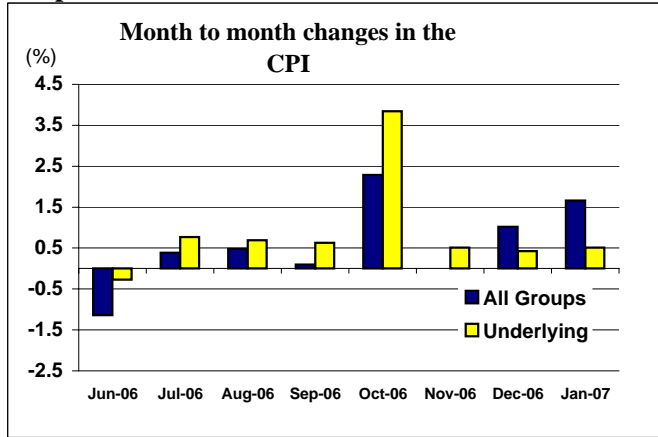
DEPUTY CHIEF EXECUTIVE OFFICER

Statistical Department

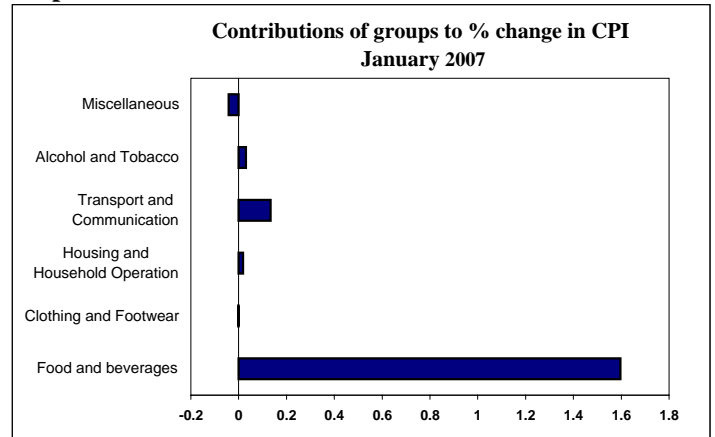
attach.

cc : Chief Executive Officer - MOF

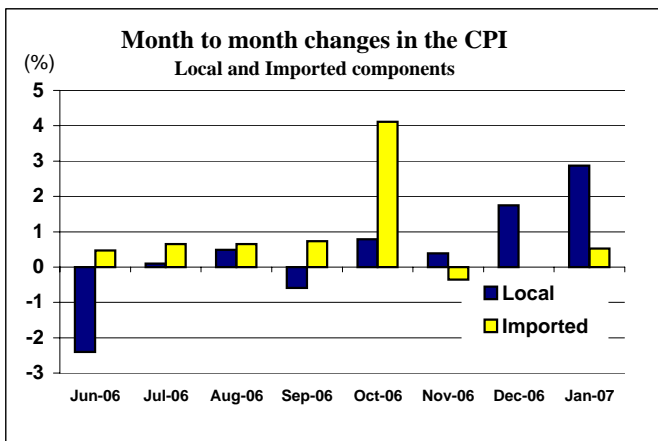
Graph.1



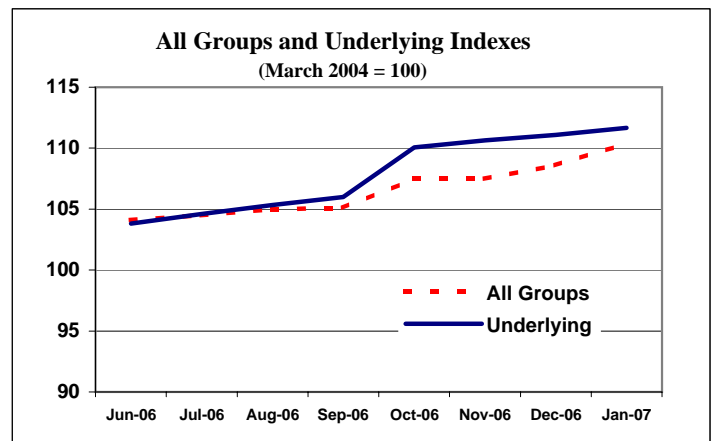
Graph.2



Graph.3



Graph.4



Graph 5

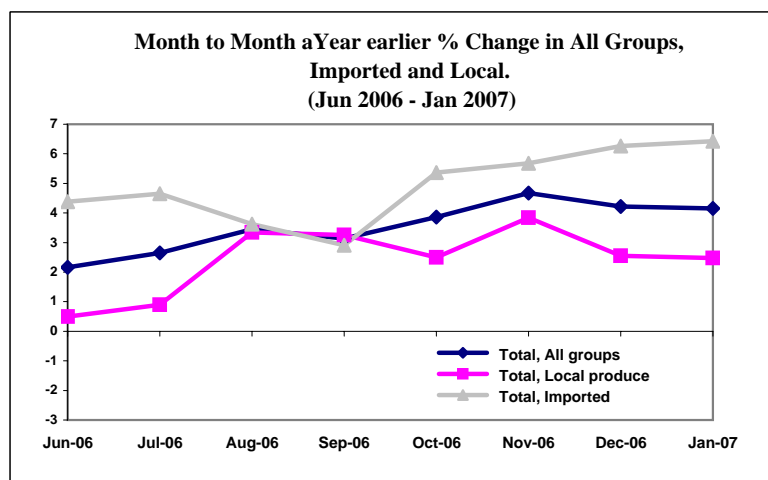


Table 1. CONSUMER PRICE INDEX.
(Base Period : Average Prices March 2004 = 100)

Group	All Items	Food	Clothing and Footwear	Housing and Household Operations	Transport and Communications	Alcohol and Tobacco	Miscellaneous
<i>Weights</i>	1000	503	20	111	144	122	100
2005	101.9	99.9	88.8	107.7	108.1	100.2	101.0
2006	105.8	103.9	85.0	111.0	113.9	104.8	102.8
2006							
January	106.0	105.8	85.9	110.1	114.3	100.6	101.3
February	105.9	105.2	84.4	110.7	115.0	100.6	101.5
March	104.3	102.1	85.2	110.4	115.4	100.6	101.5
April	105.2	103.6	85.4	110.6	116.2	100.6	101.5
May	105.3	102.7	85.7	110.9	117.8	102.3	101.5
June	104.1	101.3	85.6	111.7	114.0	102.3	101.5
July	104.5	101.7	85.3	111.3	113.9	104.1	101.7
August	105.0	102.5	84.8	111.1	113.9	105.4	102.1
September	105.1	102.5	83.9	111.5	114.0	105.4	102.1
October	107.5	105.3	84.5	112.1	112.4	111.7	105.4
November	107.5	106.0	85.1	110.9	110.3	112.0	106.0
December	108.6	108.2	84.0	110.8	109.7	111.6	107.5
2007							
January (a)	110.4	111.7	83.9	111.0	110.7	111.9	107.0
<u>Percentage Change (a)</u>							
Jan 2007 over Dec 2006	1.7	3.2	-0.1	0.2	0.9	0.3	-0.5
Jan 2007 over Jan 2006	4.2	5.6	-2.3	0.8	-3.1	11.2	5.6
ALL ITEMS UNDERLYING INDEX							
Group	All Items	Food	Clothing and Footwear	Housing and Household Operations	Transport and Communications	Alcohol and Tobacco	Miscellaneous
<i>Weights</i>	514	387	20	55	4	<i>n.a.</i>	48
2005	102.9	103.5	88.8	104.1	103.4		102.1
2006	106.3	107.8	85.0	104.3	107.3		105.8
2006							
January	105.3	106.7	85.9	105.0	103.5		102.8
February	105.3	106.7	84.4	105.1	103.3		103.0
March	104.9	106.3	85.2	104.0	105.4		103.0
April	104.8	106.1	85.4	104.3	105.4		103.0
May	104.1	105.2	85.7	103.9	105.4		103.1
June	103.8	104.8	85.6	104.0	108.0		103.0
July	104.6	105.8	85.3	103.8	107.2		103.4
August	105.3	106.8	84.8	103.0	108.1		104.4
September	106.0	107.7	83.9	103.6	109.1		104.4
October	110.1	112.0	84.5	104.7	110.7		111.1
November	110.6	112.6	85.1	104.6	110.7		112.4
December	111.1	112.8	84.0	105.2	110.7		115.5
2007							
January (a)	111.7	113.7	83.9	105.4	110.7		114.6
<u>Percentage Change (a)</u>							
Jan 2007 over Dec 2006	0.5	0.8	-0.1	0.2	0.0		-0.8
Jan 2007 over Jan 2006	6.1	6.6	-2.3	0.4	7.0		11.5

(a): Provisional figures

Note: n.a. Not applicable

Table 2. AVERAGE RETAIL PRICES OF SELECTED COMMODITIES

Commodities	Unit	2005		2006			2007
		Nov	Dec	Jan	Nov	Dec	Jan (a)
1. Biscuits	5lb carton	14.22	14.36	14.36	15.28	15.28	15.68
2. Bread	1 loaf	1.09	1.09	1.09	1.13	1.13	1.13
3. Flour	1 lb	0.77	0.77	0.80	0.86	0.86	0.87
4. Rice	1 lb	0.89	0.89	1.00	1.12	1.09	1.13
5. Eggs	1 doz	4.05	4.16	4.11	4.66	4.66	5.00
6. Butter	1 lb	5.49	5.54	5.55	5.57	5.57	5.61
7. Vegetable Oil	500 grm	2.84	2.82	2.82	2.83	2.83	2.73
8. Taamu	1 lb	0.79	0.86	0.99	0.94	1.11	1.20
9. Potatoes	1 lb	1.24	1.24	1.21	1.37	1.39	1.46
10. Taro	1 lb	0.76	0.84	0.83	0.99	0.99	1.09
11. Yam	1 lb	1.17	1.42	1.53	1.24	1.34	1.36
12. Chinese Cabbage	1 lb	1.96	2.33	2.86	2.19	2.49	3.33
13. Cucumbers	1 lb	0.75	1.07	1.21	0.95	1.21	1.25
14. Taro Leaves	1 lb	1.77	2.47	2.43	2.30	3.07	2.48
15. Onions	1 lb	0.96	1.07	1.11	1.24	1.31	1.39
16. Pumpkins	1 lb	0.49	0.70	1.00	0.46	0.56	0.70
17. Tomatoes	1 lb	1.70	2.91	5.24	1.87	2.71	4.06
18. Bananas	1 lb	0.36	0.33	0.38	0.44	0.44	0.39
19. Breadfruit	1 lb	0.37	0.44	0.34	0.30	0.89	0.24
20. Coconuts	1 lb	0.20	0.25	0.22	0.18	0.20	0.21
21. Canned fish	15 oz can	2.05	2.12	2.13	2.32	2.35	2.34
22. Fresh Fish	1lb	5.22	4.83	7.04	5.49	5.02	6.47
23. Canned Beef	12 oz can	8.11	8.13	8.18	8.49	8.61	8.48
24. Mutton Flaps	1 lb	2.71	2.74	2.93	3.27	3.26	3.26
25. Turkey Tails	1 lb	1.77	1.79	1.79	2.04	2.04	2.04
26. Chicken leg quarters	1 lb	2.27	2.19	2.09	2.04	2.04	2.01
27. Koko Samoa	small cup	4.19	4.11	4.19	5.00	4.86	4.71
28. Coffee (local)	100 grm pkt	3.90	3.90	3.90	3.88	3.88	3.90
29. Tea	0.5 lb	2.82	2.81	2.81	2.60	2.56	2.58
30. Brown sugar	1 lb	0.82	0.82	0.81	0.83	0.82	0.85
31. Salt	1 lb	0.52	0.52	0.53	0.52	0.53	0.54
32. Electricity	kwh	0.69	0.69	0.69	0.69	0.69	0.69
33. Kerosene	1 ltr	2.20	2.04	2.02	2.24	2.16	2.17
34. Petrol	1 ltr	2.28	2.15	2.08	2.18	2.12	2.15
35. Diesel	1 ltr	2.30	2.18	2.11	2.33	2.28	2.27
36. Beer (Vailima)	350 mls	3.11	3.11	3.11	3.51	3.51	3.51
37. Cigarettes (Rothmans)	1 pkt	5.94	5.94	5.94	6.41	6.40	6.40

(a): Provisional figures

Table 3. IMPORTED GOODS COMPONENT OF THE CONSUMER PRICE INDEX
(Base Period : Average Prices March 2004 = 100)

Group	All Items	Food	Clothing and Footwear	Housing and Household Operations	Transport and Communications	Alcohol and Tobacco	Miscellaneous
<i>Weights</i>	437	288	20	48	30	17	35
2005	104.5	103.1	88.8	110.8	122.6	98.9	102.9
2006	109.2	107.3	85.0	113.9	140.1	104.8	108.0
2006							
January	107.3	107.0	85.9	111.8	126.2	99.2	103.9
February	107.6	106.8	84.4	113.3	129.6	99.2	104.2
March	106.8	105.5	85.2	112.9	131.2	99.2	104.2
April	107.0	105.3	85.4	113.5	135.5	99.2	104.2
May	106.8	104.1	85.7	113.6	142.4	101.9	104.3
June	107.3	103.5	85.6	115.7	151.6	101.9	104.2
July	108.0	104.6	85.3	114.5	151.4	103.7	104.8
August	108.7	105.7	84.8	113.9	151.6	103.7	106.1
September	109.5	106.7	83.9	114.9	152.2	103.7	106.1
October	114.0	112.3	84.5	116.1	144.3	116.1	115.4
November	113.6	112.9	85.1	113.3	134.0	116.1	117.2
December	113.6	113.1	84.0	113.0	131.2	113.3	121.5
2007							
January (a)	114.2	113.9	83.9	113.3	132.0	113.3	120.2
<u>Percentage Change (a)</u>							
Jan 2007 over Dec 2006	0.5	0.7	-0.1	0.3	0.6	0.0	-1.1
Jan 2007 over Jan 2006	6.4	6.4	-2.3	1.3	4.6	14.2	15.7
IMPORTED ITEMS UNDERLYING INDEX							
Group	All Items	Food	Clothing and Footwear	Housing and Household Operations	Transport and Communications	Alcohol and Tobacco	Miscellaneous
<i>Weights</i>	385	288	20	40	2	n.a.	35
2005	102.6	103.1	88.8	105.4	107.0		102.9
2006	105.9	107.3	85.0	104.3	107.8		108.0
2006							
January	105.4	107.0	85.9	105.4	107.1		103.9
February	105.3	106.8	84.4	105.5	106.7		104.2
March	104.2	105.5	85.2	104.4	106.7		104.2
April	104.1	105.3	85.4	104.8	106.7		104.2
May	103.1	104.1	85.7	103.9	106.7		104.3
June	102.7	103.5	85.6	104.1	107.7		104.2
July	103.5	104.6	85.3	103.7	106.1		104.8
August	104.3	105.7	84.8	102.4	107.9		106.1
September	105.1	106.7	83.9	103.2	110.0		106.1
October	110.3	112.3	84.5	104.5	109.4		115.4
November	110.9	112.9	85.1	104.3	109.4		117.2
December	111.4	113.1	84.0	105.0	109.2		121.5
2007							
January (a)	112.0	113.9	83.9	105.2	109.2		120.2
<u>Percentage Change (a)</u>							
Jan 2007 over Dec 2006	0.5	0.7	-0.1	0.2	0.0		-1.1
Jan 2007 over Jan 2006	6.3	6.4	-2.3	-0.2	2.0		15.7

(a): Provisional figures

Note: n.a. Not applicable

Table 4. LOCAL GOODS COMPONENT OF THE CONSUMER PRICE INDEX**(Base Period : Average Prices March 2004 = 100)**

Group	All Items	Food	Housing and Household Operations	Transport and Communications	Alcohol and Tobacco	Miscellaneous
<i>Weights</i>	563	215	64	114	105	65
2005	99.9	95.7	105.4	104.3	100.4	100.0
2006	103.1	99.4	108.9	107.0	104.8	100.0
2006						
January	105.0	104.1	108.8	111.1	100.8	100.0
February	104.6	103.1	108.8	111.1	100.8	100.0
March	102.4	97.4	108.6	111.2	100.8	100.0
April	103.9	101.2	108.5	111.2	100.8	100.0
May	104.1	100.9	108.8	111.4	102.3	100.0
June	101.6	98.3	108.7	104.1	102.4	100.0
July	101.7	97.8	108.8	104.0	104.2	100.0
August	102.2	98.2	109.0	103.9	105.7	100.0
September	101.6	96.8	109.0	103.9	105.7	100.0
October	102.4	96.0	109.2	104.0	111.0	100.0
November	102.8	96.9	109.1	104.0	111.4	100.0
December	104.6	101.7	109.1	104.0	111.3	100.0
2007						
January (a)	107.6	108.7	109.2	105.1	111.7	100.0
<i>Percentage Change (a)</i>						
Jan 2007 over Dec 2006	2.9	6.9	0.1	1.1	0.4	0.0
Jan 2007 over Jan 2006	2.5	4.4	0.4	-5.4	10.8	0.0
LOCAL ITEMS UNDERLYING INDEX						
Group	All Items	Food	Housing and Household Operations	Transport and Communications	Alcohol and Tobacco	Miscellaneous
<i>Weights</i>	129	99	15	2	<i>n.a.</i>	13
2005	103.7	104.7	100.8	100.0		100.0
2006	107.7	109.3	104.3	106.8		100.0
2006						
January	105.0	105.9	103.8	100.0		100.0
February	105.4	106.5	104.0	100.0		100.0
March	106.9	108.4	103.0	104.2		100.0
April	106.8	108.4	102.9	104.2		100.0
May	107.0	108.4	104.1	104.2		100.0
June	107.0	108.4	103.8	108.3		100.0
July	107.9	109.6	104.1	108.3		100.0
August	108.5	110.2	104.7	108.3		100.0
September	108.6	110.4	104.9	108.3		100.0
October	109.4	111.2	105.5	112.0		100.0
November	109.9	111.8	105.3	112.0		100.0
December	110.1	112.1	105.5	112.0		100.0
2007						
January (a)	110.8	113.0	105.8	112.0		100.0
<i>Percentage Change (a)</i>						
Jan 2007 over Dec 2006	0.6	0.8	0.3	0.0		0.0
Jan 2007 over Jan 2006	5.5	6.7	1.9	12.0		0.0

(a): Provisional figures

Note: n.a. Not applicable