

Please address all correspondence
To Chief Executive Officer

In reply, please quote the file reference



GOVERNMENT OF SAMOA

File Ref: (6/4/4b)

MINISTRY OF FINANCE STATISTICAL DEPARTMENT

CONSUMER PRICE INDEX - November 2007

(Based Period: Average Prices March 2004 = 100)

SUMMARY

The All Items Consumer Price Index for the month of November 2007 registered an increase of 0.4 percent when compared to the previous month, and an increase of 5.0 percent when compared to the same month of last year. The 0.4 percent increase in the Overall Index attributed mainly to an increase of 0.7 percent in the Food group Index. Increases were also recorded for other groups such as Transport and Communication (0.6%), Clothing and Footwear (0.5%) and Miscellaneous (0.2%). Housing and Household Operation and Alcohol and Tobacco group indices recorded no change from the previous month.

The increase of 0.6 percent in the local component resulted from higher price recorded for fresh fish and some vegetables namely tomatoes, chinese and head cabbage. Increased prices recorded for rice, mutton flap and petrol are the main contributors to the 0.4 percent increase in the imported component.

The increase of 0.6 percent in the Transport and Communication group is primarily due to higher prices recorded for fuel (unleaded and diesel).

Higher prices recorded for panties and ie lanutasi (calico) is reflected in the 0.5 percent increase in the Clothing and Footwear group index.

The All Items Underlying Index for November 2007 shows an increase of 0.3 percent when compared to October this year, and an increase of 4.6 percent when compared to November 2006. The 0.3 percent increase in the Overall Underlying Index attributed to an increase of 0.3 percent in

the imported component. The local component also increases by 0.3 percent.

The twelve month ending November 2007 compared to the twelve months ending November 2006 registered an increase of 6.0 percent.

The attached Tables and Graphs provide the user with more details.



Muagututia S Reupena.

DEPUTY CHIEF EXECUTIVE OFFICER

Statistical Department

attach.

cc : Chief Executive Officer - MOF

Please address all correspondence
To Chief Executive Officer

In reply, please quote the file reference



GOVERNMENT OF SAMOA

File Ref: (6/4/4b)

MINISTRY OF FINANCE STATISTICAL DEPARTMENT

CONSUMER PRICE INDEX - OCTOBER 2007

(Based Period: Average Prices March 2004 = 100)

SUMMARY

The All Items Consumer Price Index for the month of October 2007 registered a decrease of 0.4 percent, and an increase of 4.6 percent when compared to the same month of last year. The 0.4 percent decrease in the overall Index attributed mainly to a decrease of 0.9 percent in the Food group index. Miscellaneous group also recorded a decrease of 0.2 percent. Transport and Communication group index recorded no change from the previous month. On the other hand, Housing and Household Operation recorded an increase of 0.4 percent. Clothing and Footwear and Alcohol and Tobacco group indices both registered increases of 0.2 percent.

The decrease of 1.1 percent in the local component resulted from lower prices recorded for taro, yam, fresh fish and some Vegetables such as taro leaves, green beans, water cress and pumpkin. Increased prices recorded for chicken leg quarter, flour and butter (anchor) are the main contributors to the 0.4 percent increase in the imported component.

Lower prices recorded for tooth paste and fishing hooks is reflected in the 0.2 percent in the Miscellaneous group index.

Higher prices recorded for kerosene and local timber resulted in the 0.4 percent increase in the Housing and Household Operation group index.

The 0.2 percent increase in the Clothing and Footwear group is primarily due to higher prices recorded for children shirt (plain white short sleeve).

Increased prices recorded for Samoan kava and cigarette (pocket edition) is reflected in the 0.2 percent increase in the Alcohol and Tobacco group index.

The All Items Underlying index for October 2007 registered an increase of 0.5 percent when compared to September this year, and an increase of 4.8 percent when compared to October last year. The increase of 0.3 percent in the imported component is the main contributor to the 0.5 percent increase in the All Items Underlying Index. The local component also increased by 0.8 percent.

The twelve months ending October 2007 compared to the twelve months ending October 2006 shows an increase of 6.0 percent.

The attached Tables and Graphs provide the user with more details.



Muagututia S Reupena.

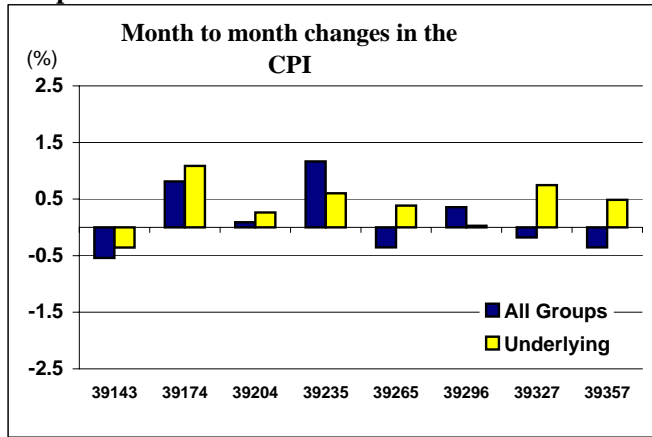
DEPUTY CHIEF EXECUTIVE OFFICER

Statistical Department

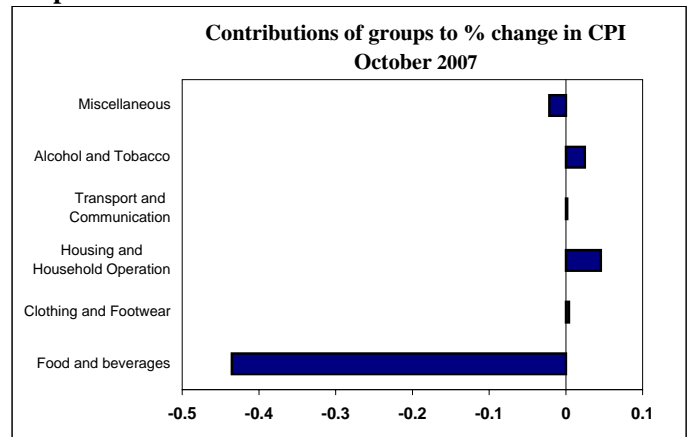
attach.

cc : Chief Executive Officer - MOF

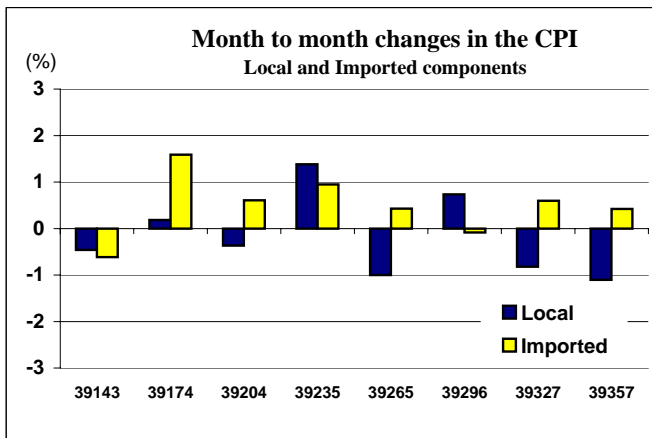
Graph.1



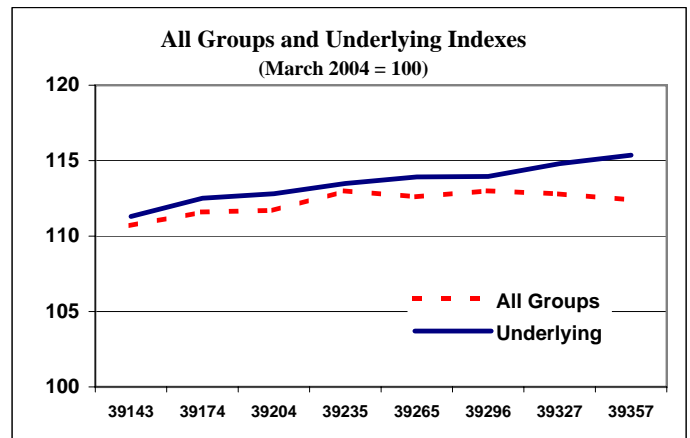
Graph.2



Graph.3



Graph.4



Graph 5

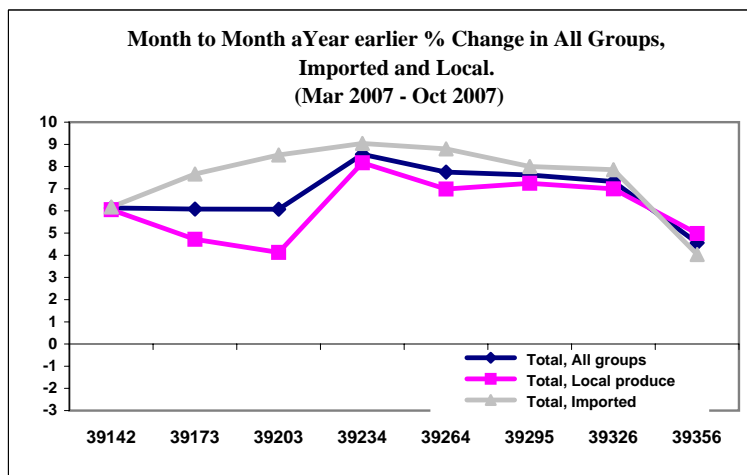


Table 1. CONSUMER PRICE INDEX.

(Base Period : Average Prices March 2004 = 100)

Group	All Items	Food	Clothing and Footwear	Housing and Household Operations	Transport and Communications	Alcohol and Tobacco	Miscellaneous
<i>Weights</i>	1000	503	20	111	144	122	100
2005	101.9	99.9	88.8	107.7	108.1	100.2	101.0
2006	105.8	103.9	85.0	111.0	113.9	104.8	102.8
2006							
October	107.5	105.3	84.5	112.1	112.4	111.7	105.4
November	107.5	106.0	85.1	110.9	110.3	112.0	106.0
December	108.6	108.2	84.0	110.8	109.7	111.6	107.5
2007							
January	110.4	111.7	83.9	111.0	110.7	111.9	107.0
February	111.3	111.7	82.9	116.1	110.7	116.0	104.5
March	110.7	110.8	82.8	115.5	110.5	116.1	104.1
April	111.6	111.7	82.7	116.3	112.9	116.3	104.4
May	111.7	111.4	82.3	116.5	113.7	116.7	104.7
June	113.0	113.4	80.7	117.2	114.9	117.7	104.5
July	112.6	112.2	79.8	117.4	115.7	117.7	105.1
August	113.0	112.8	80.9	117.5	116.0	117.7	105.2
September	112.8	111.8	82.6	118.7	115.3	119.6	105.5
October (a)	112.4	110.8	82.8	119.2	115.3	119.8	105.3
<u>Percentage Change (a)</u>							
Oct 2007 over Sept 2007	-0.4	-0.9	0.2	0.4	0.0	0.2	-0.2
Oct 2007 over Oct 2006	4.6	5.2	-2.0	6.3	2.6	7.3	0.1
ALL ITEMS UNDERLYING INDEX							
Group	All Items	Food	Clothing and Footwear	Housing and Household Operations	Transport and Communications	Alcohol and Tobacco	Miscellaneous
<i>Weights</i>	514	387	20	55	4	n.a.	48
2005	102.9	103.5	88.8	104.1	103.4		102.1
2006	106.3	107.8	85.0	104.3	107.3		105.8
2006							
October	110.1	112.0	84.5	104.7	110.7		111.1
November	110.6	112.6	85.1	104.6	110.7		112.4
December	111.1	112.8	84.0	105.2	110.7		115.5
2007							
January	111.7	113.7	83.9	105.4	110.7		114.6
February	111.7	114.3	82.9	106.1	110.3		109.3
March	111.3	114.0	82.8	105.5	110.3		108.6
April	112.5	115.3	82.7	106.4	118.6		109.0
May	112.8	115.6	82.3	106.5	118.6		109.8
June	113.5	116.6	80.7	106.8	117.4		109.3
July	113.9	117.0	79.8	107.3	118.0		110.6
August	114.0	117.0	80.9	107.3	118.0		110.8
September	114.8	117.6	82.6	109.6	120.7		111.4
October (a)	115.4	118.3	82.8	110.1	119.9		110.9
<u>Percentage Change (a)</u>							
Oct 2007 over Sept 2007	0.5	0.6	0.2	0.5	-0.7		-0.4
Oct 2007 over Oct 2006	4.8	5.6	-2.0	5.2	8.3		-0.2

(a): Provisional figures

Note: n.a. Not applicable

Table 2. AVERAGE RETAIL PRICES OF SELECTED COMMODITIES

Commodities	Unit	Aug
1 Flour	1 lb	0.83
2 Rice	1 lb	1.07
3 Butter (anchor)	1 lb	5.49
4 Eggs	1 doz	4.87
5 Taamu	1 lb	0.95
6 Potatoes	1 lb	1.09
7 Taro	1 lb	1.20
8 Yam	1 lb	1.36
9 Green Beans	1 lb	3.03
10 Chinese Cabbage	1 lb	1.20
11 Head Cabbage	1 lb	1.52
12 Cucumbers	1 lb	1.02
13 Taro Leaves	1 lb	2.09
14 Onions	1 lb	1.05
15 Pumpkins	1 lb	0.91
16 Tomatoes	1 lb	3.96
17 Water Cress	1 lb	2.09
18 Bananas	1 lb	0.51
19 Breadfruit	1 lb	0.27
20 Coconuts	1 lb	0.20
21 Canned Fish	15 oz can	2.21
22 Fish (pieces)	1 lb	3.30
23 String Fish	1lb	3.57
24 Large Fish	1lb	6.27
25 Canned Beef	12 oz can	8.21
26 Mutton Flaps	1 lb	2.68
27 Mutton Neck	1 lb	2.93
28 Turkey Tails	1 lb	1.89
29 Turkey Wings	1 lb	2.20
30 Chicken leg quarters	1 lb	1.72
31 Brown sugar	1 lb	0.82
32 Salt	1 lb	0.49
33 Paint high gloss white	4 ltr	59.10
34 Timber 2x4 (Rough)	per bd ft	1.47
35 Timber 1x2 (Rough)	per bd ft	0.81
36 Nails (2 inch)	1 lb	2.83
37 Kerosene	1 ltr	2.43
38 Petrol (unleaded)	1 ltr	2.56
39 Diesel	1 ltr	2.61
40 Beer (Vailima)	350 mls	3.19
41 Samoan kava	100 grm	5.25
42 Cigarette (pocket edition)	pkt	14.93
43 Shirt (children shirt short sleeve white)	32 size	12.48

Table 3. IMPORTED GOODS COMPONENT OF THE CONSUMER PRICE INDEX
(Base Period : Average Prices March 2004 = 100)

Group	All Items	Food	Clothing and Footwear	Housing and Household Operations	Transport and Communications	Alcohol and Tobacco	Miscellaneous
<i>Weights</i>	437	288	20	48	30	17	35
2005	104.5	103.1	88.8	110.8	122.6	98.9	102.9
2006	109.2	107.3	85.0	113.9	140.1	104.8	108.0
2006							
October	114.0	112.3	84.5	116.1	144.3	116.1	115.4
November	113.6	112.9	85.1	113.3	134.0	116.1	117.2
December	113.6	113.1	84.0	113.0	131.2	113.3	121.5
2007							
January	114.2	113.9	83.9	113.3	132.0	113.3	120.2
February	114.1	114.7	82.9	113.3	132.6	112.7	112.9
March	113.4	114.2	82.8	112.1	130.4	112.7	111.9
April	115.2	115.6	82.7	113.7	140.5	113.0	112.5
May	115.9	116.1	82.3	114.0	144.6	113.0	113.5
June	117.0	117.0	80.7	115.6	150.7	113.0	112.9
July	117.5	117.2	79.8	116.4	154.2	113.0	113.7
August	117.4	117.2	80.9	116.5	151.8	113.0	114.0
September	118.1	118.0	82.6	117.3	147.5	119.6	114.8
October (a)	118.6	118.7	82.8	117.6	147.6	119.6	114.1
<u>Percentage Change (a)</u>							
Oct 2007 over Sept 2007	0.4	0.6	0.2	0.3	0.1	0.0	-0.6
Oct 2007 over Oct 2006	4.0	5.7	-2.0	1.3	2.3	3.0	-1.1
IMPORTED ITEMS UNDERLYING INDEX							
Group	All Items	Food	Clothing and Footwear	Housing and Household Operations	Transport and Communications	Alcohol and Tobacco	Miscellaneous
<i>Weights</i>	385	288	20	40	2	n.a.	35
2005	102.6	103.1	88.8	105.4	107.0		102.9
2006	105.9	107.3	85.0	104.3	107.8		108.0
2006							
October	110.3	112.3	84.5	104.5	109.4		115.4
November	110.9	112.9	85.1	104.3	109.4		117.2
December	111.4	113.1	84.0	105.0	109.2		121.5
2007							
January	112.0	113.9	83.9	105.2	109.2		120.2
February	111.9	114.7	82.9	105.7	108.5		112.9
March	111.4	114.2	82.8	105.2	108.5		111.9
April	112.5	115.6	82.7	106.0	108.5		112.5
May	113.0	116.1	82.3	106.1	108.5		113.5
June	113.6	117.0	80.7	106.5	109.9		112.9
July	113.9	117.2	79.8	107.4	111.2		113.7
August	114.0	117.2	80.9	107.2	111.2		114.0
September	114.8	118.0	82.6	108.2	116.8		114.8
October (a)	115.2	118.7	82.8	107.9	115.0		114.1
<u>Percentage Change (a)</u>							
Oct 2007 over Sept 2007	0.3	0.6	0.2	-0.3	-1.5		-0.6
Oct 2007 over Oct 2006	4.4	5.7	-2.0	3.3	5.1		-1.1

(a): Provisional figures

Note: n.a. Not applicable

Table 4. LOCAL GOODS COMPONENT OF THE CONSUMER PRICE INDEX**(Base Period : Average Prices March 2004 = 100)**

Group	All Items	Food	Housing and Household Operations	Transport and Communications	Alcohol and Tobacco	Miscellaneous
<i>Weights</i>	563	215	64	114	105	65
2005	99.9	95.7	105.4	104.3	100.4	100.0
2006	103.1	99.4	108.9	107.0	104.8	100.0
2006						
October	102.4	96.0	109.2	104.0	111.0	100.0
November	102.8	96.9	109.1	104.0	111.4	100.0
December	104.6	101.7	109.1	104.0	111.3	100.0
2007						
January	107.6	108.7	109.2	105.1	111.7	100.0
February	109.1	107.8	118.3	105.0	116.6	100.0
March	108.6	106.2	118.1	105.3	116.7	100.0
April	108.8	106.4	118.3	105.6	116.9	100.0
May	108.4	105.2	118.4	105.6	117.2	100.0
June	109.9	108.6	118.4	105.5	118.4	100.0
July	108.8	105.5	118.2	105.5	118.4	100.6
August	109.6	106.9	118.3	106.5	118.4	100.6
September	108.7	103.5	119.8	106.8	119.6	100.6
October (a)	107.5	100.3	120.3	106.8	119.9	100.6
<i>Percentage Change (a)</i>						
Oct 2007 over Sept 2007	-1.1	-3.1	0.4	0.0	0.3	0.0
Oct 2007 over Oct 2006	5.0	4.5	10.2	2.7	8.0	0.6
LOCAL ITEMS UNDERLYING INDEX						
Group	All Items	Food	Housing and Household Operations	Transport and Communications	Alcohol and Tobacco	Miscellaneous
<i>Weights</i>	129	99	15	2	n.a.	13
2005	103.7	104.7	100.8	100.0		100.0
2006	107.7	109.3	104.3	106.8		100.0
2006						
October	109.4	111.2	105.5	112.0		100.0
November	109.9	111.8	105.3	112.0		100.0
December	110.1	112.1	105.5	112.0		100.0
2007						
January	110.8	113.0	105.8	112.0		100.0
February	111.2	113.3	107.3	112.0		100.0
March	111.2	113.4	106.5	112.0		100.0
April	112.4	114.6	107.3	128.2		100.0
May	112.2	114.2	107.7	128.2		100.0
June	113.1	115.5	107.7	124.5		100.0
July	114.0	116.4	107.0	124.5		102.7
August	113.9	116.2	107.4	124.5		102.7
September	114.8	116.5	113.5	124.5		102.7
October	115.7	117.3	115.8	124.5		102.7
<i>Percentage Change (a)</i>						
Oct 2007 over Sept 2007	0.8	0.7	2.0	0.0		0.0
Oct 2007 over Oct 2006	5.8	5.5	9.8	11.2		2.7

(a): Provisional figures

Note: n.a. Not applicable

b: Revised figures