

Please address all correspondence  
To Government Statistician  
In reply, please quote the file reference



File Ref: CPI 10/10

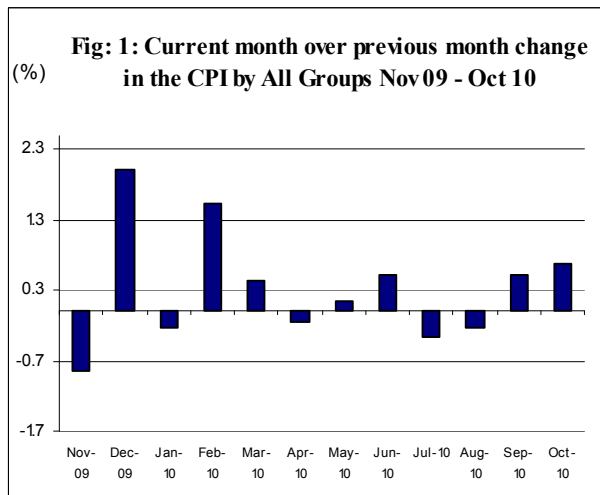
GOVERNMENT OF SAMOA

## SAMOA BUREAU OF STATISTICS

### CONSUMER PRICE INDEX - October 2010 (Based Period: Average Prices March 2004 = 100)

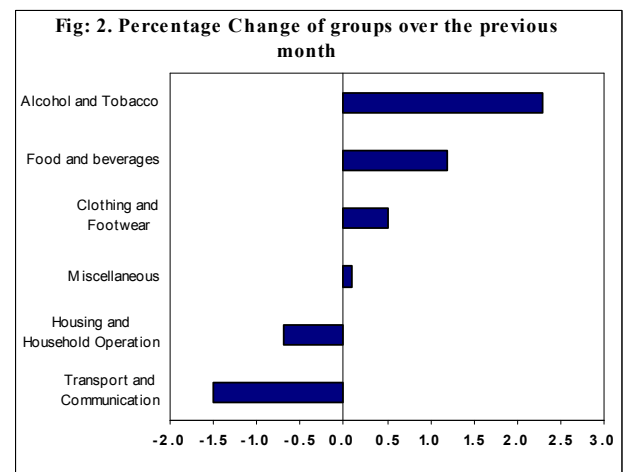
#### SUMMARY

The All Items Consumer Price Index for the month of October 2010 registered an increase of 0.7 percent when compared to the previous month, and an increase of 4.1 percent when compared to the same month of last year. Depicted in Fig 1 are the month to month changes in the Consumer Price Index by all groups from November 09 to October 10.



The 0.7 percent increase in the Overall Index is attributed mainly to an increase of 1.2 percent in the Food group index.

Increases were also recorded for other groups namely Alcohol and Tobacco (2.3%), Miscellaneous (0.1%) and Clothing and Footwear (0.5%). On the contrary, Transport and Communication and Housing and Household Operation group indices recorded decreases of 1.5 and 0.7 percent respectively. Graphically presented in Fig 2 is the October 2010 percentage change of groups over September 2010.

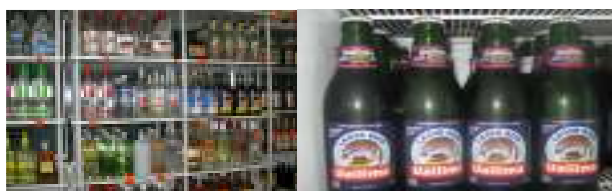


Higher prices recorded for mutton flap, brown sugar, yam, breadfruit and fresh fish

(large) is reflected in the 1.2 percent increase in the Food group index.



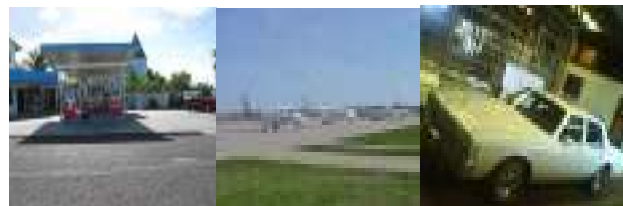
The 2.3 percent increase in the Alcohol and Tobacco group was primarily due to higher prices recorded for beer vailima (small bottle) and spirit (volka, whisky).



Increased prices recorded for ie lanutasi (calico) and half slip has contributed to the 0.5 percent increase in the Clothing and Footwear group index.



Lower prices recorded for fuel (unleaded and diesel), airline fares (Apia-Auckland-Apia) and car repair (labour charge) were the main contributor to the 1.5 percent decrease in the Transport and Communication group index.



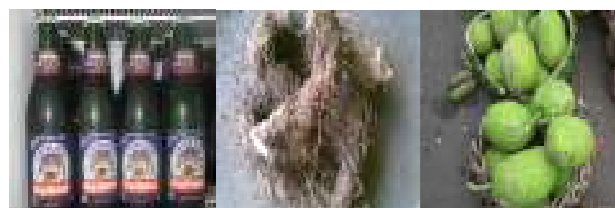
The 0.7 percent decrease in the Housing and Household Operation group is mainly due to lower prices recorded for kerosene and building material (nails 2", nails 4" and roofing iron).



The imported component registered an increase of 1.1 percent due to higher prices recorded for mutton flaps, brown sugar and spirit (volka and whisky).



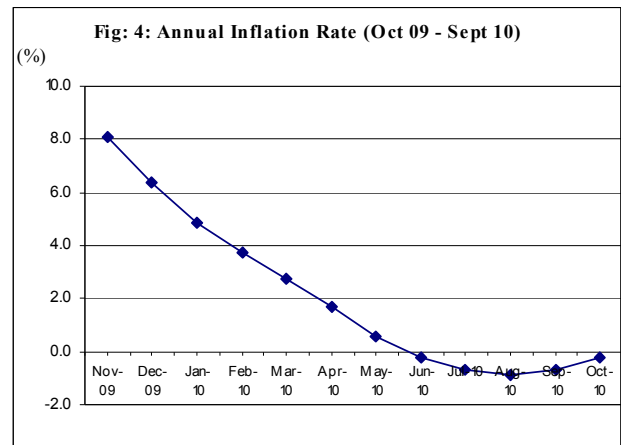
A slight increase of 0.2 percent in the local component is mainly due to higher prices recorded for breadfruit, yam, and beer vailima (small bottle).



The All Items Underlying Index for October 2010 registered an increase of 0.6 percent when compared to September 2010, and an increase of 3.4 percent when

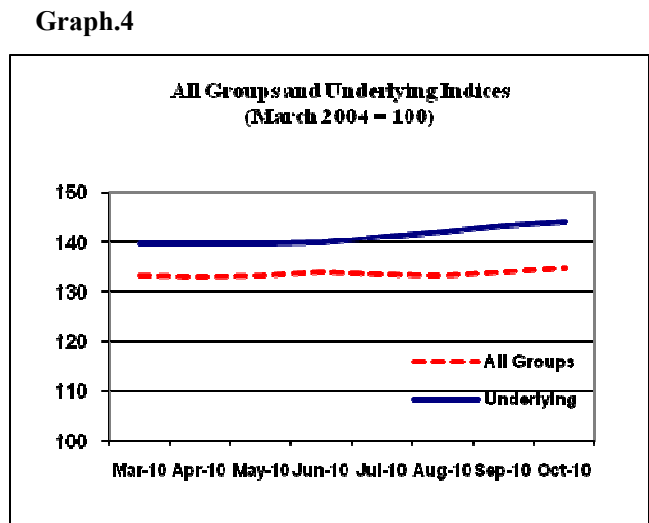
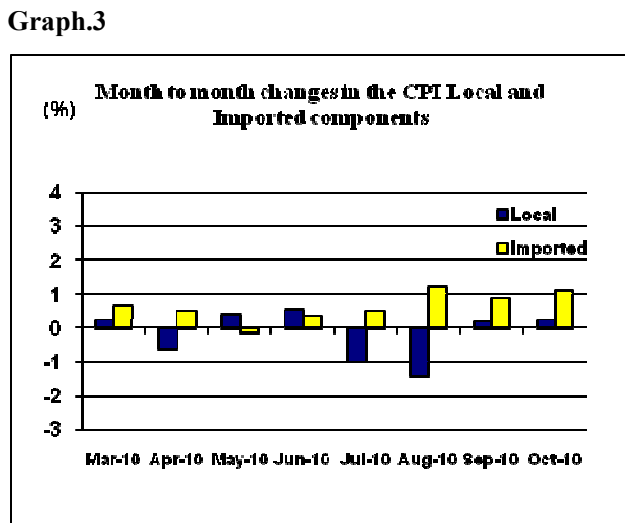
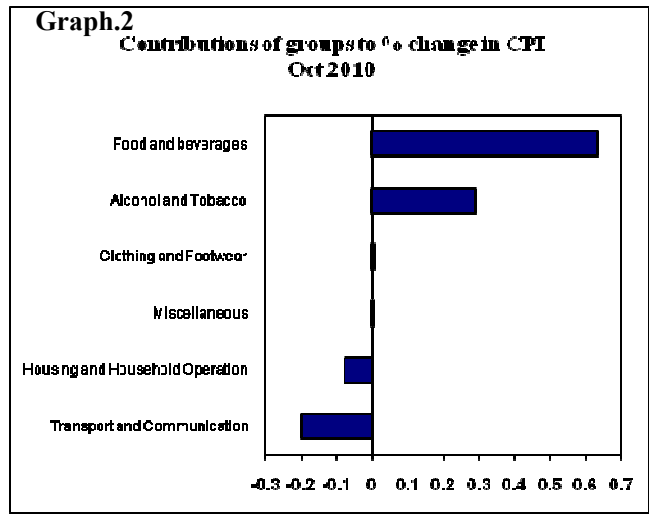
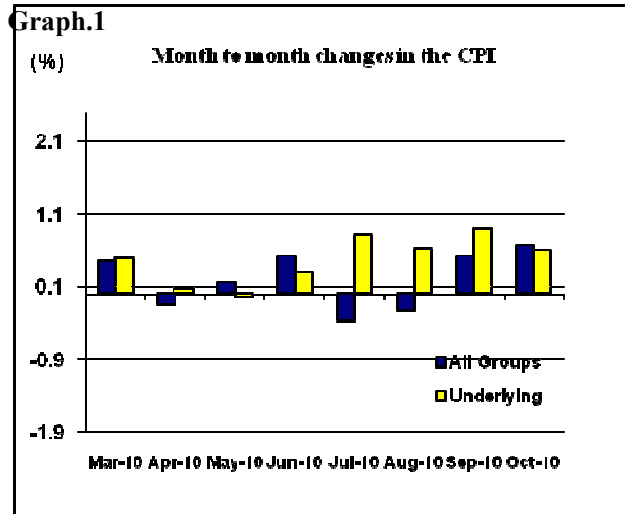
compared to October 2009. The 0.6 percent increase in the Overall Underlying Index is attributed to an increase of 1.2 percent in the imported component. The local component recorded a decrease of 1.2 percent.

The twelve months ending October 2010 compared to the twelve months ending October 2009 shows a decrease of 0.2 percent, as illustrated below in Fig 4.

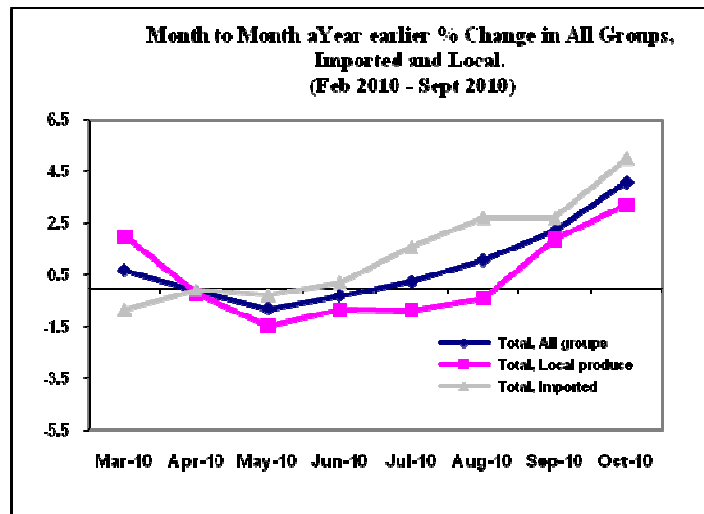


The attached Tables and Graphs provide the user with more detailed analysis.

Muagututia S Reupena.  
**GOVERNMENT STATISTICIAN**



**Graph 5**



**Table 1. CONSUMER PRICE INDEX.**

**(Base Period : Average Prices March 2004 = 100)**

Group	All Items	Food	Clothing and Footwear	Housing and Household Operations	Transport and Communications	Alcohol and Tobacco	Miscellaneous
<i>Weights</i>	<b>1000</b>	<b>503</b>	<b>20</b>	<b>111</b>	<b>144</b>	<b>122</b>	<b>100</b>
2006	105.7	103.9	85.0	111.0	113.5	104.8	102.8
2007	111.6	111.9	82.3	117.1	109.7	117.4	105.2
2008	124.5	127.7	83.9	128.8	124.7	122.9	113.4
2009	132.4	140.7	89.0	130.5	126.8	127.2	115.6
2009							
October	129.6	135.4	89.5	129.3	127.4	126.3	116.1
November	128.5	133.5	89.4	128.8	126.8	127.2	115.7
December	131.1	138.4	89.7	128.7	128.1	126.9	115.2
2010							
January	130.8	136.4	89.9	130.9	127.8	126.9	119.2
February	132.8	140.0	90.3	129.8	128.5	128.8	119.5
March	133.4	139.7	90.3	133.2	129.4	130.1	119.7
April	133.2	138.2	90.5	133.7	130.8	132.3	120.7
May	133.4	138.2	92.2	135.5	130.4	132.1	120.6
June	134.1	139.3	93.6	135.9	130.9	132.1	120.7
July	133.6	138.2	93.7	135.9	130.1	132.3	121.9
August	133.3	137.8	92.2	135.2	130.2	132.5	121.8
September	134.0	137.9	91.8	136.7	130.6	136.4	121.8
October (a)	134.9	139.6	92.3	135.8	128.7	139.6	121.9
<b><u>Percentage Change (a)</u></b>							
Oct 2010 over Sep 2010	0.7	1.2	0.5	-0.7	-1.5	2.3	0.1
Oct 2010 over Oct 2009	4.1	3.1	3.1	5.0	1.0	10.5	5.0
<b>ALL ITEMS UNDERLYING INDEX</b>							
Group	All Items	Food	Clothing and Footwear	Housing and Household Operations	Transport and Communications	Alcohol and Tobacco	Miscellaneous
<i>Weights</i>	<b>514</b>	<b>387</b>	<b>20</b>	<b>55</b>	<b>4</b>	<i>n.a.</i>	<b>48</b>
2006	106.3	107.8	85.0	104.3	107.3		105.8
2007	113.6	116.4	82.3	107.5	117.7		110.7
2008	127.7	133.4	83.9	112.8	141.8		116.1
2009	140.1	148.7	89.1	117.0	148.8		118.4
2009							
October	139.3	147.7	89.5	115.9	151.5		118.3
November	138.8	147.2	89.4	115.8	149.7		117.4

December 2010	138.6	147.1	89.7	115.6	149.4	116.4
January	138.5	146.5	89.9	115.4	149.4	119.9
February	138.9	146.9	90.3	115.8	152.9	120.5
March	139.6	147.8	90.3	115.4	151.7	121.0
April	139.7	147.8	90.5	114.6	153.8	122.9
May	139.6	147.5	92.2	114.8	154.4	122.9
June	140.0	148.0	93.6	114.9	154.2	123.1
July	141.2	149.5	93.7	115.1	150.7	122.8
August	142.0	150.9	92.2	114.5	147.2	122.8
September	143.3	152.5	91.8	115.4	146.9	122.8
October (a)	144.1	153.8	92.3	114.6	135.1	122.8
<b><u>Percentage Change (a)</u></b>						
Oct 2010 over Sep 2010	0.6	0.9	0.5	-0.7	-8.0	0.0
Oct 2010 over Oct 2009	3.4	4.1	3.1	-1.1	-10.8	3.8

(a): Provisional figures

Note: n.a. Not applicable

**Table 2. AVERAGE RETAIL PRICES OF SELECTED COMMODITIES**

Commodities	Unit	2009			2010		
		Aug	Sep	Oct	Aug	Sep	Oct
1 Flour	1 lb	1.45	1.45	1.45	1.21	1.34	1.29
2 Rice	1 lb	2.02	2.03	2.00	1.98	1.87	1.85
3 Salt	1 lb	0.67	0.70	0.72	0.70	0.82	0.84
4 Sugar (Brown)	1 lb	1.10	1.10	1.06	1.35	1.31	1.42
5 Taamu	1 lb	1.93	1.43	1.39	0.96	1.21	1.09
6 Breadfruit	1 lb	0.54	0.73	0.66	0.17	0.38	0.69
7 Potatoes	1 lb	1.31	1.34	1.32	1.34	1.35	1.49
8 Onions	1 lb	1.31	1.30	1.42	1.45	1.44	1.45
9 Taro	1 lb	1.63	1.35	1.26	1.15	1.12	1.09
10 Yam	1 lb	1.55	1.40	1.23	1.14	1.18	1.40
11 Chinese Cabbage	1 lb	1.08	1.33	1.03	1.46	1.13	1.26
12 Head Cabbage	1 lb	1.71	1.41	1.51	1.86	1.47	1.74
13 Cucumbers	1 lb	1.10	0.94	1.13	1.39	1.16	0.97
14 Pumpkins	1 lb	0.93	0.77	0.61	0.84	0.69	0.63
15 Green Beans	1 lb	2.98	3.06	2.94	2.82	2.25	1.77
16 Water Cress	1 lb	2.78	3.05	2.57	4.25	3.15	2.25
17 Tomatoes	1 lb	3.03	2.54	1.58	3.81	2.62	2.06
18 Taro leaves	1 lb	2.11	3.15	3.63	3.02	2.71	2.54
19 Bananas	1 lb	0.72	0.72	0.58	0.50	0.45	0.48
20 Fish & Chips (meal / local )	1 serve	7.50	7.50	7.50	8.00	9.00	8.00
21 String Fish	1 lb	3.85	3.84	3.69	3.86	3.44	3.31
22 Large Fish	1lb	7.17	5.36	5.68	6.39	5.36	6.82
23 Fish (piece)	1lb	5.28	4.61	3.89	4.49	4.30	4.42
24 Canned fish (Early Dawn Natual Oil)	15 oz	4.49	4.49	4.49	3.74	3.71	3.71
25 Mutton Flaps	1 lb	4.55	4.55	4.55	5.08	5.58	5.99
26 Chicken leg quarters	1 lb	2.32	2.36	2.21	1.83	1.92	1.89
27 Turkey Wings	1 lb	3.15	3.43	3.43	3.63	3.63	3.53
28 Spirit ( whisky )	nip	8.00	8.00	8.00	8.00	8.33	10.33
29 Spirit ( Volka )	nip	8.33	8.33	8.33	8.00	8.67	10.33
30 Beer ( Vailima / local )	350 mls	3.67	3.67	3.67	3.50	3.93	4.07
31 Ie Lanutasi ( cotton,calico)	2yds	7.32	7.32	7.32	7.17	7.17	7.50
32 Half slip ( Woman / imported )	medium	8.18	8.18	8.28	8.28	7.18	8.28
33 Roofing iron ( Zincalume)	12 ft	60.78	60.78	58.98	59.40	60.60	57.05
34 Air Fares ( Apia-Auckland-Apia )	return trip	1295.18	1295.18	1295.18	1272.43	1430.60	1308.50
35 Electricity	kwh	0.81	0.80	0.82	0.92	0.94	0.94
36 Kerosene	1 ltr	1.99	2.03	2.01	2.34	2.34	2.24
37 Nails 2" ( galvanised )	lb	3.85	3.85	3.68	3.50	3.50	3.13

38	Nails 4" ( galvanised )	lb	3.85	3.85	3.68	3.50	3.50	3.13
39	Petrol (unleaded)	1 ltr	2.16	2.33	2.26	2.52	2.51	2.39
40	Diesel	1 ltr	2.15	2.27	2.22	2.56	2.56	2.46
41	Labour charge ( car repair )	mini charge	58.33	58.33	58.33	58.33	58.33	50.00
42	Car Tyre ( Radial / imported)	205/70R(14)	252.50	252.50	252.50	199.00	210.00	199.00
43	Car Battery (12 volt)	N50	258.33	250.00	250.00	263.33	253.33	250.00
44	Diapers (Huggies 16kg & over)	24 package	34.61	34.61	34.61	37.36	37.36	37.46

(a) : Provisional figures

**Table 3. IMPORTED GOODS COMPONENT OF THE CONSUMER PRICE INDEX**  
**(Base Period : Average Prices March 2004 =**

**100)**

Group	All Items	Food	Clothing and Footwear	Housing and Household Operations	Transport and Communications	Alcohol and Tobacco	Miscell- aneous
<i>Weights</i>	<b>437</b>	<b>288</b>	<b>20</b>	<b>48</b>	<b>30</b>	<b>17</b>	<b>35</b>
2006	109.2	107.3	85.0	113.9	140.1	104.8	108.0
2007	116.7	116.7	82.3	115.7	145.2	115.2	114.4
2008	133.3	133.2	83.9	129.5	194.6	119.3	122.0
2009	140.6	148.2	89.0	123.5	160.7	121.9	122.8
2009							
October	139.7	146.9	89.5	120.8	162.1	123.0	123.0
November	139.0	146.4	89.4	120.7	159.0	124.3	121.8
December	139.4	146.2	89.7	120.1	170.1	122.3	120.5
2010							
January	138.7	145.3	89.9	120.7	162.6	122.3	123.9
February	139.5	145.4	90.3	121.5	167.3	128.2	124.7
March	140.4	146.4	90.3	121.3	171.3	128.2	125.5
April	141.1	146.4	90.5	121.7	177.8	128.6	128.1
May	140.9	145.9	92.2	122.5	176.0	128.6	128.1
June	141.4	146.5	93.6	123.6	176.2	128.6	128.3
July	142.1	148.3	93.7	122.3	169.7	128.6	127.9
August	143.8	150.3	92.2	122.9	175.6	128.6	127.9
September	145.1	151.9	91.8	124.0	175.1	132.9	127.9
October (a)	146.7	154.4	92.3	121.9	169.1	148.7	128.0
October	109.5	106.7	83.9	114.9	152.2	103.7	106.1
<b><u>Percentage Change (a)</u></b>							
Oct 2010 over Sep 2010	1.1	1.6	0.5	-1.7	-3.4	11.9	0.1
Oct 2010 over Oct 2009	5.0	5.1	3.1	0.9	4.3	20.9	4.1
<b>IMPORTED ITEMS UNDERLYING INDEX</b>							
Group	All Items	Food	Clothing and Footwear	Housing and Household Operations	Transport and Communications	Alcohol and Tobacco	Miscell- aneous
<i>Weights</i>	<b>385</b>	<b>288</b>	<b>20</b>	<b>40</b>	<b>2</b>	<i>n.a.</i>	<b>35</b>
2006	105.9	107.3	85.0	104.3	107.8		108.0
2007	113.7	116.7	82.3	106.8	113.1		114.4
2008	127.5	133.2	83.9	112.1	154.4		121.9
2009	139.7	148.2	89.1	117.6	164.6		122.8
2009							
October	138.7	146.9	89.5	116.2	169.8		123.0
November	138.1	146.4	89.4	116.1	166.0		121.8

December 2010	137.8	146.2	89.7	115.5	165.4	120.5
January	137.4	145.3	89.9	115.1	165.4	123.9
February	137.6	145.4	90.3	115.6	172.5	124.7
March	138.4	146.4	90.3	115.1	170.0	125.5
April	138.6	146.4	90.5	114.4	174.3	128.1
May	138.4	145.9	92.2	114.8	175.7	128.1
June	138.9	146.5	93.6	115.2	175.3	128.3
July	140.2	148.3	93.7	115.2	168.1	127.9
August	141.5	150.3	92.2	114.3	160.8	127.9
September	142.8	151.9	91.8	115.6	160.2	127.9
October (a)	144.6	154.4	92.3	114.5	155.6	128.0
<b><u>Percentage Change (a)</u></b>						
Oct 2010 over Sep 2010	1.2	1.6	0.5	-1.0	-2.9	0.0
Oct 2010 over Oct 2009	4.3	5.1	3.1	-1.5	-8.3	4.0

(a): Provisional figures

Note: n.a. Not applicable

**Table 4. LOCAL GOODS COMPONENT OF THE CONSUMER PRICE INDEX**

**(Base Period : Average Prices March 2004 = 100)**

Group	All Items	Food	Housing and Household Operations	Transport and Communications	Alcohol and Tobacco	Miscellaneous
<i>Weights</i>	<b>563</b>	<b>215</b>	<b>64</b>	<b>114</b>	<b>105</b>	<b>65</b>
2006	103.0	99.4	108.9	106.5	104.8	100.0
2007	107.6	105.5	118.1	100.4	117.8	100.3
2008	117.6	120.3	128.2	106.4	123.5	108.8
2009	126.0	130.6	135.9	117.9	128.1	111.8
2009						
October	121.8	119.9	135.8	118.3	126.9	112.4
November	120.4	116.2	134.9	118.3	127.7	112.4
December	124.7	128.0	135.1	117.1	127.7	112.4
2010						
January	124.6	124.6	138.6	118.6	127.7	116.7
February	127.6	132.8	136.1	118.3	128.9	116.7
March	127.9	130.9	142.2	118.3	130.4	116.7
April	127.1	127.4	142.8	118.4	132.9	116.7
May	127.6	128.0	145.3	118.4	132.6	116.7
June	128.3	129.7	145.2	119.0	132.6	116.7
July	127.0	124.8	146.1	119.7	132.9	118.6
August	125.2	121.2	144.5	118.3	133.1	118.6
September	125.4	119.1	146.2	118.9	137.0	118.6
October (a)	125.7	119.8	146.2	118.1	138.2	118.6
<b><u>Percentage Change (a)</u></b>						
Oct 2010 over Sep 2010	0.2	0.6	0.0	-0.7	0.9	0.0
Oct 2010 over Oct 2009	3.2	-0.1	7.7	-0.2	8.9	5.5
<b>LOCAL ITEMS UNDERLYING INDEX</b>						
Group	All Items	Food	Housing and Household Operations	Transport and Communications	Alcohol and Tobacco	Miscellaneous
<i>Weights</i>	<b>129</b>	<b>99</b>	<b>15</b>	<b>2</b>	<i>n.a.</i>	<b>13</b>
2006	107.7	109.3	104.3	106.8		100.0
2007	113.5	115.5	109.6	122.0		101.3
2008	128.3	134.0	109.6	122.0		101.3
2008	141.3	150.0	115.5	133.8		106.8
2009						

August	141.4	150.1	116.8	134.3	105.8
September	141.5	150.3	115.6	134.3	105.8
October	141.2	150.1	115.2	134.3	105.8
November	141.0	149.8	115.0	134.3	105.8
December	141.1	149.8	115.8	134.3	105.8
2010					
January	141.7	150.1	116.1	134.3	109.4
February	142.6	151.2	116.5	134.3	109.4
March	143.1	151.8	116.4	134.3	109.4
April	142.9	151.8	115.2	134.3	109.4
May	143.2	152.3	114.8	134.3	109.4
June	143.3	152.4	114.3	134.3	109.4
July	143.9	153.1	114.7	134.3	109.4
August	143.5	152.6	115.0	134.3	109.4
September	144.6	154.1	115.0	134.3	109.4
October (a)	142.9	152.1	114.9	115.7	109.4
	143.3	152.4	114.3	134.3	109.4
<b><u>Percentage Change (a)</u></b>					
Oct 2010 over Sep 2010	-1.2	-1.3	-0.1	-13.8	0.0
Oct 2010 over Oct 2009	1.2	1.3	-0.3	-13.8	3.4

(a): Provisional figures

Note: n.a. Not applicable