

Please address all correspondence
To Government Statistician
In reply, please quote the file reference



File Ref: CPI 04/10

GOVERNMENT OF SAMOA

SAMOA BUREAU OF STATISTICS

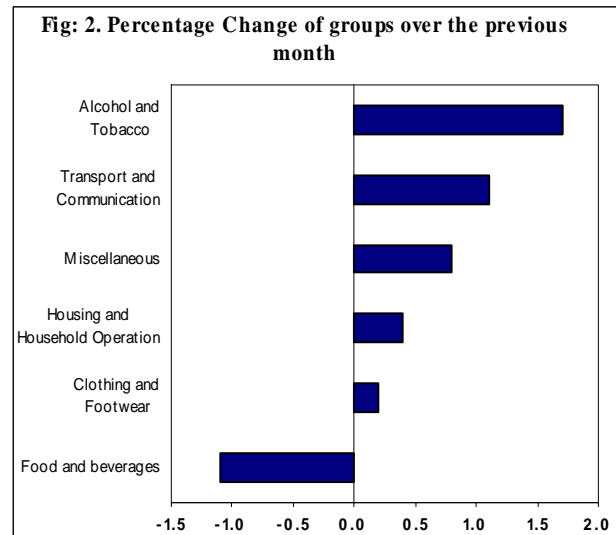
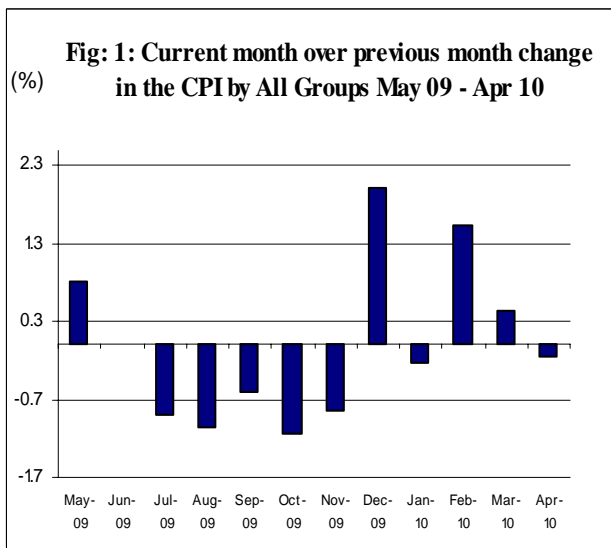
CONSUMER PRICE INDEX - April 2010

(Based Period: Average Prices March 2004 = 100)

SUMMARY

The All Items Consumer Price Index for the month of April 2010 recorded a decrease of 0.1 percent when compared to the previous month, and also a decrease of 0.1 percent when compared to the same month of last year. Depicted in Fig 1 are the month to month changes in the Consumer Price Index by all groups from May 09 to April 10.

1.1 percent in the Food group index. On the contrary, increases were recorded for other groups namely Alcohol and Tobacco (1.7%), Transport and Communication (1.1%), Miscellaneous (0.8%), Housing and Household Operation (0.4%) and Clothing and Footwear (0.2%). Graphically presented in Fig 2 is the April 2010 percentage change of groups over March 2010.



The 0.1 percent decrease in the Overall Index is attributed mainly to a decrease of

The 1.1 percent decrease in the Food group is primarily due to lower prices recorded for coconut and some vegetables namely tomatoes, chinese and head cabbages, water cress and pumpkin.



Increased prices recorded for cigarette (Pall Mall Filter and Menthol, Pocket Edition) resulted in the 1.7 percent increase in the Alcohol and Tobacco group index.



The 1.1 percent increase in the Transport and Communication group is primarily due to higher prices recorded for fuel (unleaded, diesel).



Higher prices recorded for medicine (paracetamol) and diapers (huggies) reflected in the 0.8 percent increase in the Miscellaneous group index.



Increased prices recorded for electricity (kwh) and kerosene contributed to the 0.4 percent increase in the Housing and Household Operation group index.



The local component registered a decrease of 0.6 percent due to lower prices recorded for coconut and some vegetables namely tomatoes, chinese and head cabbages, water cress and pumpkin.



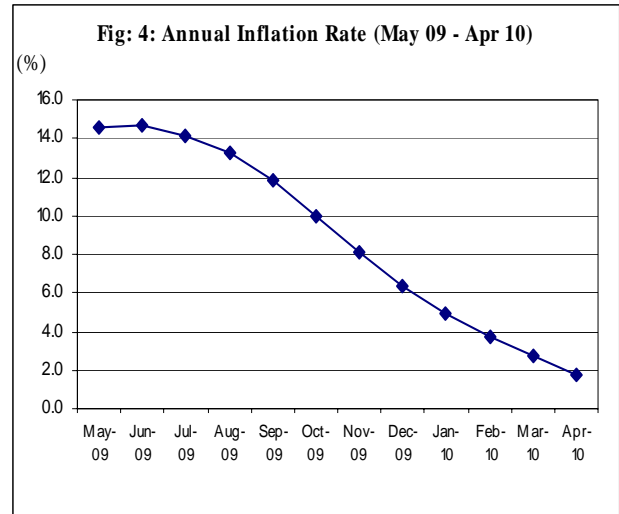
Higher prices recorded for fuel (unleaded, diesel), medicine (paracetamol) and diapers (huggies) are the main contributor to the 0.5 percent increase in the imported component.



The All Items Underlying Index for April 2010 recorded an increase of 0.1 percent when compared to March 2010, and a decrease of 0.4 percent when compared to April 2009. The 0.1 percent increase in the Overall Underlying Index is attributed to an increase of 0.1 percent in the imported

component. The local component registered a decrease of 0.1 percent.

The twelve months ending April 2010 compared to the twelve months ending April 2009 registered an increase of 1.7 percent, as illustrated below in Fig 4.



The attached Tables and Graphs provide the user with more detailed analysis.

Muagututia S Reupena.
GOVERNMENT STATISTICIAN

Table 1. CONSUMER PRICE INDEX.

(Base Period : Average Prices March 2004 = 100)

Group	All Items	Food	Clothing and Footwear	Housing and Household Operations	Transport and Communications	Alcohol and Tobacco	Miscellaneous
<i>Weights</i>	1000	503	20	111	144	122	100
2006	105.7	103.9	85.0	111.0	113.5	104.8	102.8
2007	111.6	111.9	82.3	117.1	109.7	117.4	105.2
2008	124.5	127.7	83.9	128.8	124.7	122.9	113.4
2009	132.4	140.7	89.0	130.5	126.8	127.2	115.6
2009							
April	133.4	142.7	88.5	130.6	127.0	127.7	114.8
May	134.5	145.4	88.8	129.0	126.6	127.7	114.5
June	134.5	144.7	89.0	130.7	126.5	128.0	115.8
July	133.3	142.3	88.7	129.1	127.5	127.9	116.0
August	131.9	140.3	88.7	129.5	126.3	126.3	116.1
September	131.1	138.2	89.3	129.0	128.0	126.3	116.1
October	129.6	135.4	89.5	129.3	127.4	126.3	116.1
November	128.5	133.5	89.4	128.8	126.8	127.2	115.7
December	131.1	138.4	89.7	128.7	128.1	126.9	115.2
2010							
January	130.8	136.4	89.9	130.9	127.8	126.9	119.2
February	132.8	140.0	90.3	129.8	128.5	128.8	119.5
March	133.4	139.7	90.3	133.2	129.4	130.1	119.7
April (a)	133.2	138.2	90.5	133.7	130.8	132.3	120.7
<u>Percentage Change (a)</u>							
Apr 2010 over Mar 2010	-0.1	-1.1	0.2	0.4	1.1	1.7	0.8
Apr 2010 over Apr 2009	-0.1	-3.2	2.3	2.4	3.0	3.6	5.1
ALL ITEMS UNDERLYING INDEX							
Group	All Items	Food	Clothing and Footwear	Housing and Household Operations	Transport and Communications	Alcohol and Tobacco	Miscellaneous
<i>Weights</i>	514	387	20	55	4	n.a.	48
2006	106.3	107.8	85.0	104.3	107.3		105.8
2007	113.6	116.4	82.3	107.5	117.7		110.7
2008	127.7	133.4	83.9	112.8	141.8		116.1
2009	140.1	148.7	89.1	117.0	148.8		118.4
2009							
April	140.3	149.0	88.5	117.7	144.2		118.2

May	140.4	149.4	88.8	116.1	142.1	117.6
June	140.8	149.5	89.0	118.1	150.9	117.7
July	139.4	147.7	88.7	117.4	153.2	118.2
August	140.0	148.5	88.7	117.3	153.2	118.3
September	140.6	149.3	89.3	117.0	151.5	118.3
October	139.3	147.7	89.5	115.9	151.5	118.3
November	138.8	147.2	89.4	115.8	149.7	117.4
December	138.6	147.1	89.7	115.6	149.4	116.4
2010						
January	138.5	146.5	89.9	115.4	149.4	119.9
February	138.9	146.9	90.3	115.8	152.9	120.5
March	139.6	147.8	90.3	115.4	151.7	121.0
April (a)	139.7	147.8	90.5	114.6	153.8	122.9
<u>Percentage Change (a)</u>						
Apr 2010 over Mar 2010	0.1	0.0	0.2	-0.7	1.4	1.6
Apr 2010 over Apr 2009	-0.4	-0.8	2.3	-2.6	6.7	4.0

(a): Provisional figures

Note: n.a. Not applicable

Table 2. AVERAGE RETAIL PRICES OF SELECTED COMMODITIES

Commodities	Unit	2009			2010		
		Feb	Mar	Apr	Feb	Mar	Apr (a)
1 Flour	1 lb	1.45	1.54	1.48	1.47	1.40	1.36
2 Rice	1 lb	2.06	2.16	2.22	1.86	1.90	1.78
3 Salt	1 lb	0.73	0.72	0.72	0.80	0.80	0.80
4 Sugar (Brown)	1 lb	1.07	1.06	1.07	1.06	1.05	1.19
5 Taamu	1 lb	2.34	2.00	1.91	1.47	0.82	1.15
6 Breadfruit	1 lb	0.66	1.13	0.72	0.14	0.38	0.48
7 Potatoes	1 lb	1.55	1.31	1.31	1.41	1.37	1.32
8 Onions	1 lb	1.38	1.34	1.30	1.44	1.40	1.35
9 Taro	1 lb	1.33	1.35	1.51	0.92	0.91	0.89
10 Yam	1 lb	1.48	1.57	1.31	1.40	1.27	1.47
11 Chinese Cabbage	1 lb	2.36	1.87	3.20	4.72	3.64	2.27
12 Head Cabbage	1 lb	4.76	2.80	3.59	4.20	4.59	3.57
13 Cucumbers	1 lb	1.76	1.53	1.55	2.39	1.80	2.12
14 Pumpkins	1 lb	0.83	0.70	0.78	1.44	1.14	1.00
15 Water Cress	1 lb	3.47	3.21	3.54	6.75	5.98	3.63
16 Tomatoes	1 lb	4.57	3.55	4.32	5.57	7.21	5.40
17 Taro leaves	1 lb	3.27	3.30	2.00	3.10	3.57	2.88
18 Bananas	1 lb	0.59	0.68	0.80	0.33	0.39	0.47
19 Coconuts	1 lb	0.20	0.23	0.21	0.22	0.22	0.19
20 String Fish	1 lb	3.97	3.32	3.89	3.71	3.53	3.48
21 Large Fish	1lb	5.41	4.30	6.35	7.01	6.74	6.27
22 Fish (piece)	1lb	6.20	4.47	5.69	6.02	7.01	7.08
23 Mutton Flaps	1 lb	4.33	4.32	4.36	4.98	5.09	5.02
24 Mutton Neck	1 lb	3.69	3.64	3.54	4.11	4.42	4.38
25 Chicken leg quarters	1 lb	2.30	2.32	2.24	1.87	1.83	1.83
26 Turkey Wings	1 lb	3.04	2.90	2.75	3.22	3.43	3.43
27 Pig Trotter	1 lb	3.28	2.94	2.94	3.01	2.86	2.96
28 Eggs	doz	6.50	6.67	6.87	6.24	6.24	6.20
29 Beer (Vailima)	350 mls	3.80	3.80	3.80	3.50	3.50	3.50
30 Cigarettes Pall Mall Filter	20 rolls	7.67	7.67	7.67	7.90	7.93	8.14
31 Cigarettes Pall Mall Menthol	20 rolls	7.67	7.67	7.67	7.90	7.93	8.14
32 Cigarettes (Pocket Edition)	packet	16.10	16.10	16.10	17.63	17.78	19.33
33 Samoan kava	packet	7.88	7.88	7.88	7.88	8.63	8.63
34 Shirt short sleeve white (children)	32 size	14.87	13.67	13.67	15.67	15.67	15.67
35 Ie Lanutasi (calico)	2yds	6.98	6.98	6.98	7.50	7.50	7.50
36 Electricity	kwh	0.84	0.83	0.81	0.82	0.89	0.90

37	Kerosene	1 ltr	2.45	2.28	2.19	2.12	2.14	2.23
38	PVC pipe (20 ft)	0.5 inch	10.24	10.24	11.26	11.12	10.72	10.72
39	Petrol (unleaded)	1 ltr	2.05	2.35	2.30	2.33	2.44	2.56
40	Diesel	1 ltr	2.35	2.23	2.13	2.32	2.36	2.50
41	Paracetamol	20 tab	2.17	2.17	2.17	2.17	2.17	2.50
42	Diapers (Huggies 16kg & over)	24 package	34.76	34.84	34.84	35.37	35.64	36.23
43	Washing soap (yellow)	bar	2.95	3.03	3.15	2.92	2.87	2.93

(a) : Provisional figures

Table 3. IMPORTED GOODS COMPONENT OF THE CONSUMER PRICE INDEX

(Base Period : Average Prices March 2004 = 100)

Group	All Items	Food	Clothing and Footwear	Housing and Household Operations	Transport and Communications	Alcohol and Tobacco	Miscellaneous
<i>Weights</i>	437	288	20	48	30	17	35
2006	109.2	107.3	85.0	113.9	140.1	104.8	108.0
2007	116.7	116.7	82.3	115.7	145.2	115.2	114.4
2008	133.3	133.2	83.9	129.5	194.6	119.3	122.0
2009	140.6	148.2	89.0	123.5	160.7	121.9	122.8
2009							
April	141.2	148.7	88.5	124.9	161.7	121.5	123.0
May	141.3	149.2	88.8	122.0	165.1	121.5	122.1
June	141.1	149.0	89.0	123.4	159.2	123.8	122.3
July	139.9	146.9	88.7	122.5	164.0	123.0	122.9
August	140.0	148.0	88.7	121.7	156.8	123.0	123.0
September	141.3	149.0	89.3	122.1	164.6	123.0	123.0
October	139.7	146.9	89.5	120.8	162.1	123.0	123.0
November	139.0	146.4	89.4	120.7	159.0	124.3	121.8
December	139.4	146.2	89.7	120.1	170.1	122.3	120.5
2010							
January	138.7	145.3	89.9	120.7	162.6	122.3	123.9
February	139.5	145.4	90.3	121.5	167.3	128.2	124.7
March	140.4	146.4	90.3	121.3	171.3	128.2	125.5
April (a)	141.1	146.4	90.5	121.7	177.8	128.6	128.1
<u>Percentage Change (a)</u>							
Apr 2010 over Mar 2010	0.5	0.0	0.2	0.3	3.8	0.3	2.1
Apr 2010 over Apr 2009	-0.1	-1.5	2.3	-2.6	10.0	5.8	4.1
IMPORTED ITEMS UNDERLYING INDEX							
Group	All Items	Food	Clothing and Footwear	Housing and Household Operations	Transport and Communications	Alcohol and Tobacco	Miscellaneous
<i>Weights</i>	385	288	20	40	2	<i>n.a.</i>	35
2006	105.9	107.3	85.0	104.3	107.8		108.0
2007	113.7	116.7	82.3	106.8	113.1		114.4
2008	127.5	133.2	83.9	112.1	154.4		121.9
2009	139.7	148.2	89.1	117.6	164.6		122.8
2009							
April	140.2	148.7	88.5	118.6	158.5		123.0
May	140.1	149.2	88.8	116.1	154.3		122.1

June	140.3	149.0	89.0	118.5	168.4	122.3
July	138.8	146.9	88.7	118.0	173.3	122.9
August	139.5	148.0	88.7	117.5	173.3	123.0
September	140.3	149.0	89.3	117.5	169.8	123.0
October	138.7	146.9	89.5	116.2	169.8	123.0
November	138.1	146.4	89.4	116.1	166.0	121.8
December	137.8	146.2	89.7	115.5	165.4	120.5
2010						
January	137.4	145.3	89.9	115.1	165.4	123.9
February	137.6	145.4	90.3	115.6	172.5	124.7
March	138.4	146.4	90.3	115.1	170.0	125.5
April (a)	138.6	146.4	90.5	114.4	174.3	128.1
<u>Percentage Change (a)</u>						
Apr 2010 over Mar 2010	0.1	0.0	0.2	-0.6	2.5	2.1
Apr 2010 over Apr 2009	-1.1	-1.5	2.3	-3.5	10.0	4.1

(a): Provisional figures

Note: n.a. Not applicable

Table 4. LOCAL GOODS COMPONENT OF THE CONSUMER PRICE INDEX**(Base Period : Average Prices March 2004 = 100)**

Group	All Items	Food	Housing and Household Operations	Transport and Communications	Alcohol and Tobacco	Miscellaneous
<i>Weights</i>	563	215	64	114	105	65
2006	103.0	99.4	108.9	106.5	104.8	100.0
2007	107.6	105.5	118.1	100.4	117.8	100.3
2008	117.6	120.3	128.2	106.4	123.5	108.8
2009	126.0	130.6	135.9	117.9	128.1	111.8
2009						
April	127.4	134.7	134.9	117.8	128.6	110.4
May	129.5	140.4	134.3	117.8	128.7	110.4
June	129.4	139.0	136.2	117.9	128.7	112.4
July	128.1	136.2	134.1	117.9	128.7	112.4
August	125.7	130.2	135.3	118.3	126.9	112.4
September	123.1	123.8	134.1	118.3	126.9	112.4
October	121.8	119.9	135.8	118.3	126.9	112.4
November	120.4	116.2	134.9	118.3	127.7	112.4
December	124.7	128.0	135.1	117.1	127.7	112.4
2010						
January	124.6	124.6	138.6	118.6	127.7	116.7
February	127.6	132.8	136.1	118.3	128.9	116.7
March	127.9	130.9	142.2	118.3	130.4	116.7
April (a)	127.1	127.4	142.8	118.4	132.9	116.7
<i>Percentage Change (a)</i>						
Apr 2010 over Mar 2010	-0.6	-2.7	0.4	0.1	1.9	0.0
Apr 2010 over Apr 2009	-0.2	-5.4	5.9	0.5	3.3	5.7
LOCAL ITEMS UNDERLYING INDEX						
Group	All Items	Food	Housing and Household Operations	Transport and Communications	Alcohol and Tobacco	Miscellaneous
<i>Weights</i>	129	99	15	2	<i>n.a.</i>	13
2006	107.7	109.3	104.3	106.8		100.0
2007	113.5	115.5	109.6	122.0		101.3
2008	128.3	134.0	109.6	122.0		101.3
2008	141.3	150.0	115.5	133.8		106.8

2009					
April	140.9	149.6	115.4	130.6	105.8
May	141.1	149.8	116.1	130.6	105.8
June	142.1	151.0	116.9	134.3	105.8
July	141.1	149.9	115.5	134.3	105.8
August	141.4	150.1	116.8	134.3	105.8
September	141.5	150.3	115.6	134.3	105.8
October	141.2	150.1	115.2	134.3	105.8
November	141.0	149.8	115.0	134.3	105.8
December	141.1	149.8	115.8	134.3	105.8
2010					
January	141.7	150.1	116.1	134.3	109.4
February	142.6	151.2	116.5	134.3	109.4
March	143.1	151.8	116.4	134.3	109.4
April (a)	142.9	151.8	115.2	134.3	109.4
<u>Percentage Change (a)</u>					
Apr 2010 over Mar 2010	-0.1	0.0	-1.0	0.0	0.0
Apr 2010 over Apr 2009	1.4	1.4	-0.2	2.8	3.4

(a): Provisional figures

Note: n.a. Not applicable