

Please address all correspondence
To Government Statistician
In reply, please quote the file reference



File Ref: CPI 01/10

GOVERNMENT OF SAMOA

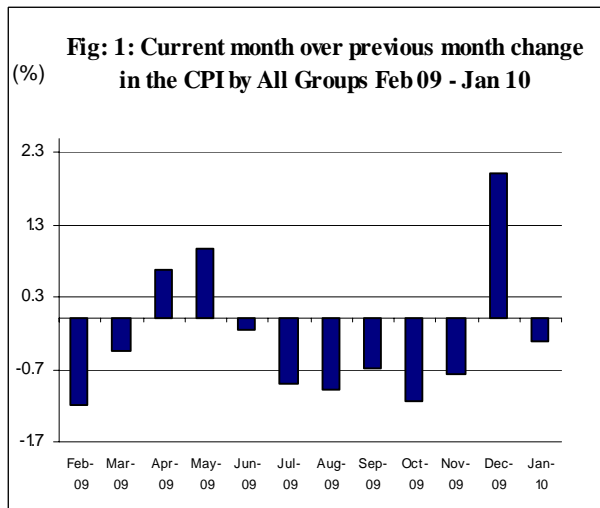
SAMOA BUREAU OF STATISTICS

CONSUMER PRICE INDEX - January 2010

(Based Period: Average Prices March 2004 = 100)

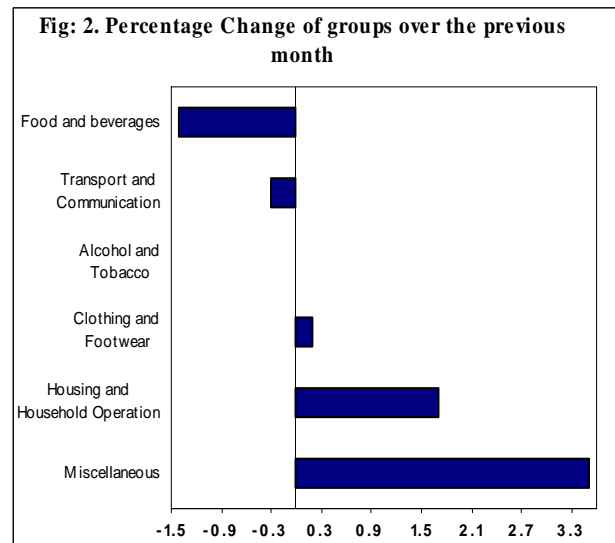
SUMMARY

The All Items Consumer Price Index for the month of January 2010 recorded a decrease of 0.3 percent when compared to the previous month, and a decrease of 2.9 percent when compared to the same month of last year. Depicted in Fig 1 are the month to month changes in the Consumer Price Index by all groups from February 09 to January 10.



The 0.3 percent decrease in the Overall Index is attributed mainly to a decrease of 1.4 percent in the Food group index, while

Transport and Communication group recorded a slight decrease of 0.3 percent. Alcohol and Tobacco group recorded no change from the previous month. On the contrary, Increases were recorded for other groups namely Miscellaneous (3.5%), Housing and Household Operation (1.7%) and Clothing and Footwear (0.2%). Graphically presented in Fig 2 is the January 2010 percentage change of groups over December 2009.



Lower prices recorded for rice, mutton flap, mutton neck, taro, taamu, breadfruit, coconut, fresh fish (string, large) contributed to the 1.4 percent decrease in the Food group index.



The 0.3 percent decrease in the Transport and Communication group was primarily due to lower prices recorded for fuel (unleaded, diesel)



The Miscellaneous group registered an increase of 3.5 percent due to higher prices recorded for NUS registration fee, hospital charge and medicine (paracetamol).



Increased prices recorded for electricity (kwh) has contributed to the 1.7 percent increase in the Housing and Household Operation group index.



Lower prices recorded for rice, mutton flap, mutton neck and fuel (unleaded, diesel) are the main contributor to the 0.5 percent decrease in the imported component.

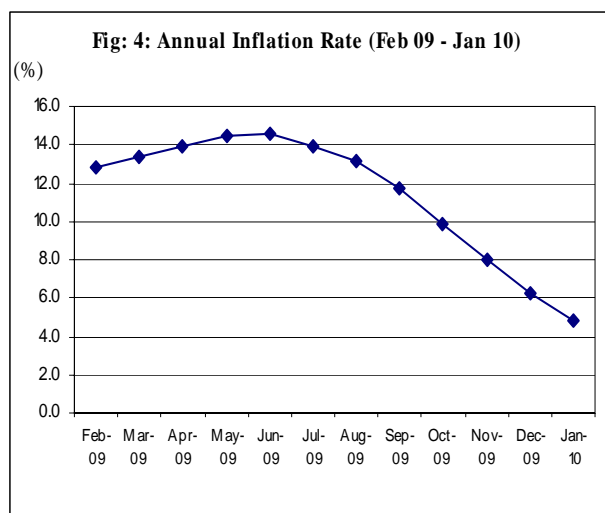


The local component registered a slight decrease of 0.1 percent due to lower prices recorded for taro, taamu, breadfruit, coconut and fresh fish (string, large).



The All Items Underlying Index for January 2010 registered a decrease of 0.1 percent when compared to December 2009, and a decrease of 2.7 percent when compared to January 2009. The 0.1 percent decrease in the Overall Underlying Index is attributed to a decrease of 0.3 percent in the imported component. The local component registered an increase of 0.4 percent.

The twelve months ending January 2010 compared to the twelve months ending January 2009 shows an increase of 4.8 percent, as illustrated below in Fig 4.

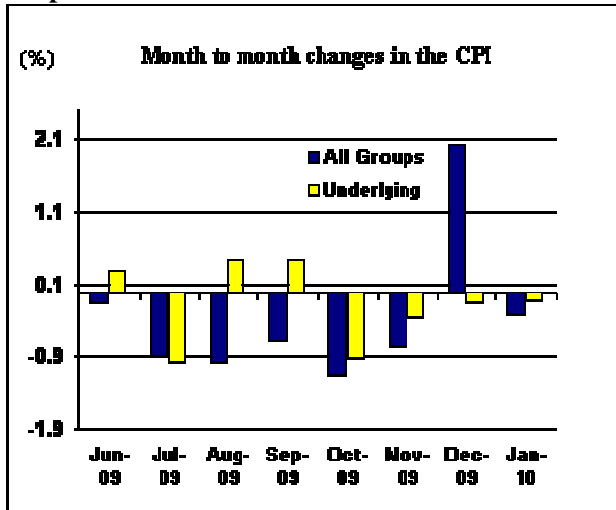


The attached Tables and Graphs provide the user with more detailed analysis.

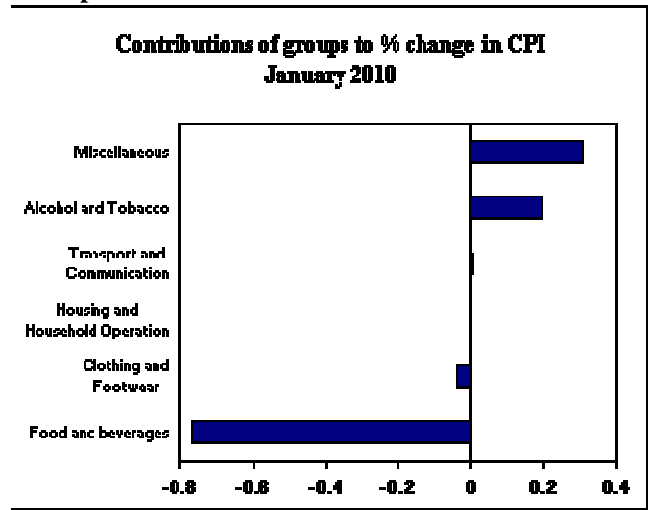
Muagututia S Reupena.

GOVERNMENT STATISTICIAN

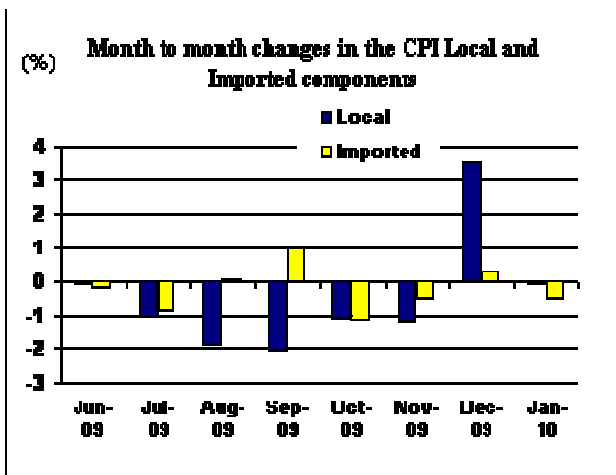
Graph.1



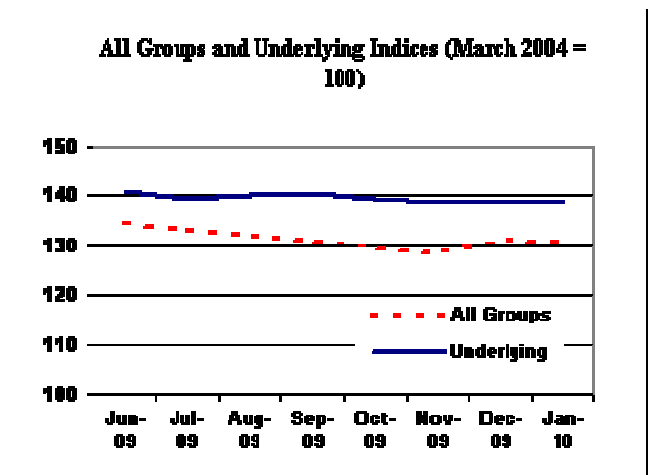
Graph.2



Graph.3



Graph.4



Graph 5

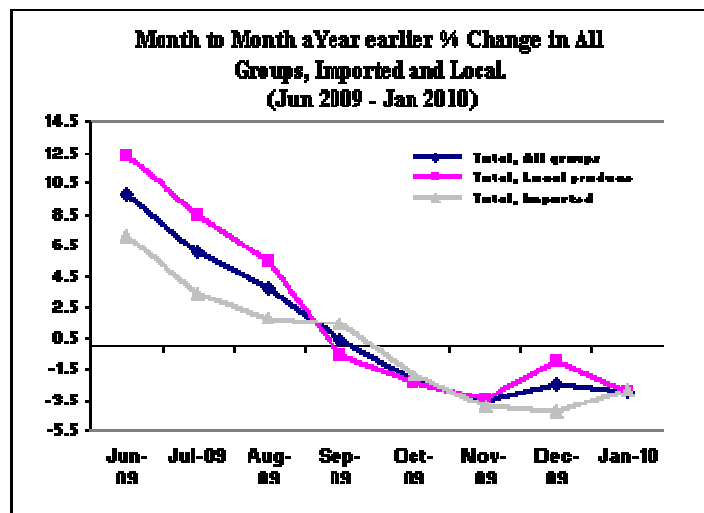


Table 1. CONSUMER PRICE INDEX.

(Base Period : Average Prices March 2004 = 100)

Group	All Items	Food	Clothing and Footwear	Housing and Household Operations	Transport and Communications	Alcohol and Tobacco	Miscell- aneous
<i>Weights</i>	1000	503	20	111	144	122	100
2006	105.7	103.9	85.0	111.0	113.5	104.8	102.8
2007	111.6	111.9	82.3	117.1	109.7	117.4	105.2
2008	124.4	127.7	83.9	128.8	124.3	122.9	113.4
2009	132.2	140.7	89.0	130.5	125.8	127.2	115.6
2009							
January	134.5	144.6	88.7	135.9	123.3	127.3	116.2
February	132.9	142.0	89.2	133.5	123.9	127.2	115.4
March	132.3	140.3	89.0	132.3	126.4	127.4	115.4
April	133.2	142.7	88.5	130.6	125.9	127.7	114.8
May	134.5	145.4	88.8	129.0	126.6	127.7	114.5
June	134.3	144.7	89.0	130.7	125.4	128.0	115.8
July	133.1	142.3	88.7	129.1	126.4	127.9	116.0
August	131.8	140.3	88.7	129.5	125.2	126.3	116.1
September	130.9	138.2	89.3	129.0	126.9	126.3	116.1
October	129.4	135.4	89.5	129.3	126.3	126.3	116.1
November	128.4	133.5	89.4	128.8	125.7	127.2	115.7
December	131.0	138.4	89.7	128.7	127.0	126.9	115.2
2010							
January (a)	130.6	136.4	89.9	130.9	126.6	126.9	119.2
<u>Percentage Change (a)</u>							
Jan 2010 over Dec 2009	-0.3	-1.4	0.2	1.7	-0.3	0.0	3.5
Jan 2010 over Jan 2009	-2.9	-5.7	1.4	-3.7	2.7	-0.3	2.6
ALL ITEMS UNDERLYING INDEX							
Group	All Items	Food	Clothing and Footwear	Housing and Household Operations	Transport and Communications	Alcohol and Tobacco	Miscell- aneous
<i>Weights</i>	514	387	20	55	4	n.a.	48
2006	106.3	107.8	85.0	104.3	107.3		105.8
2007	113.6	116.4	82.3	107.5	117.7		110.7
2008	127.7	133.4	83.9	112.8	141.8		116.1
2009	140.1	148.7	89.1	117.0	148.8		118.4
2009							
January	142.3	151.2	88.7	117.3	150.9		121.2
February	140.0	148.3	89.2	118.0	144.4		119.4

March	140.6	149.1	89.0	118.3	144.2	119.4
April	140.3	149.0	88.5	117.7	144.2	118.2
May	140.4	149.4	88.8	116.1	142.1	117.6
June	140.8	149.5	89.0	118.1	150.9	117.7
July	139.4	147.7	88.7	117.4	153.2	118.2
August	140.0	148.5	88.7	117.3	153.2	118.3
September	140.6	149.3	89.3	117.0	151.5	118.3
October	139.3	147.7	89.5	115.9	151.5	118.3
November	138.8	147.2	89.4	115.8	149.7	117.4
December	138.6	147.1	89.7	115.6	149.4	116.4
2010						
January (a)	138.5	146.5	89.9	115.4	149.4	119.9
<u>Percentage Change (a)</u>						
Jan 2010 over Dec 2009	-0.1	-0.4	0.2	-0.2	0.0	3.0
Jan 2010 over Jan 2009	-2.7	-3.1	1.4	-1.6	-1.0	-1.1

(a): Provisional figures

Note: n.a. Not applicable

Table 2. AVERAGE RETAIL PRICES OF SELECTED COMMODITIES

Commodities	Unit	2008		2009			2010
		Nov	Dec	Jan	Nov	Dec	Jan (a)
1 Flour	1 lb	1.61	1.61	1.48	1.38	1.38	1.33
2 Rice	1 lb	2.13	2.22	2.20	2.00	1.96	1.91
3 Salt	1 lb	0.78	0.84	0.84	0.72	0.72	0.72
4 Sugar (Brown)	1 lb	1.07	1.07	1.03	1.09	1.09	1.09
5 Taamu	1 lb	2.04	1.88	1.96	1.21	1.42	1.30
6 Breadfruit	1 lb	0.63	0.23	0.28	0.42	0.57	0.26
7 Potatoes	1 lb	1.60	1.61	1.67	1.28	1.20	1.36
8 Onions	1 lb	1.37	1.37	1.47	1.42	1.38	1.43
9 Taro	1 lb	1.71	1.48	1.41	1.06	1.27	1.04
10 Yam	1 lb	1.44	1.53	1.48	1.53	1.59	1.36
11 Chinese Cabbage	1 lb	1.81	2.49	2.82	1.42	1.94	3.00
12 Head Cabbage	1 lb	1.75	4.57	5.05	1.36	2.09	2.71
13 Cucumbers	1 lb	0.80	1.08	1.28	1.61	1.35	1.79
14 Pumpkins	1 lb	1.02	1.04	0.70	0.57	0.70	0.81
15 Water Cress	1 lb	2.41	3.08	2.41	2.24	3.48	3.25
16 Tomatoes	1 lb	1.53	3.22	4.32	1.27	3.60	3.61
17 Taro leaves	1 lb	2.14	2.78	3.40	2.46	3.05	4.21
18 Bananas	1 lb	0.61	0.56	0.47	0.50	0.42	0.38
19 Coconuts	1 lb	0.25	0.26	0.20	0.25	0.30	0.27
20 String Fish	1 lb	3.43	3.93	4.41	3.17	3.85	2.35
21 Large Fish	1lb	6.26	7.65	8.11	4.97	7.57	5.54
22 Fish (piece)	1lb	4.92	5.79	6.67	3.48	5.41	5.94
23 Mutton Flaps	1 lb	4.00	4.45	4.23	4.50	4.75	4.51
24 Mutton Neck	1 lb	3.46	3.69	3.76	4.23	4.38	4.06
25 Chicken leg quarters	1 lb	2.70	2.77	2.67	2.11	2.04	2.07
26 Pig Trotter	1 lb	3.00	3.08	3.04	2.86	2.86	2.83
27 Eggs	doz	6.39	6.51	6.61	5.91	5.60	6.01
28 Beer (Vailima)	350 mls	3.83	3.80	3.80	3.69	3.69	3.69
29 Shirt short sleeve white (children)	32 size	12.95	14.77	14.77	15.26	15.09	15.49
30 T shirt (children)	32 size	7.39	7.39	7.36	8.43	8.50	8.50
31 Ie Lanutasi (calico)	2yds	6.42	6.72	6.72	7.05	7.45	7.45
32 Jandals (soft rubber)	10.5 size	4.82	4.82	4.98	5.35	5.75	5.75
33 Electricity	kwh	0.96	0.87	0.89	0.81	0.81	0.85
34 PVC pipe (20 ft)	0.5 inch	10.18	10.18	9.98	10.62	10.62	10.42
35 Petrol (unleaded)	1 ltr	2.91	2.39	1.97	2.20	2.42	2.27
36 Diesel	1 ltr	3.06	2.64	2.39	2.20	2.45	2.29

37	Magnesium Trisillicate	100mls	6.60	7.30	7.30	8.30	7.62	8.63
38	Hospital Charge	per night	4.00	4.00	4.00	4.00	4.00	5.00
39	Paracetamol	20 tab	2.83	2.83	2.83	2.00	2.00	2.17
40	NUS registration fee	annual	219.00	219.00	219.00	219.00	219.00	241.00
41	Car Tyre (Radial)	205/70(R14)	177.50	177.50	177.50	242.50	240.00	240.00
42	Tooth Paste (Colgate)	110g	5.23	4.94	4.94	4.91	4.91	4.91
43	Diapers (Huggies 16kg & over)	24 package	34.76	34.76	34.76	33.98	33.98	34.48
44	Washing soap (yellow)	bar	3.18	3.26	3.11	2.88	2.88	2.88

(a) : Provisional figures

Table 3. IMPORTED GOODS COMPONENT OF THE CONSUMER PRICE INDEX
(Base Period : Average Prices March 2004 = 100)

Group	All	Food	Clothing and Footwear	Housing and Household Operations	Transport and Communications	Alcohol and Tobacco	Miscell- aneous
<i>Weights</i>	437	288	20	48	30	17	35
2006	109.2	107.3	85.0	113.9	140.1	104.8	108.0
2007	116.7	116.7	82.3	115.7	145.2	115.2	114.4
2008	133.3	133.2	83.9	129.5	194.6	119.3	122.0
2009	140.6	148.2	89.0	123.5	160.7	121.9	122.8
2009							
January	142.8	151.7	88.7	128.4	148.9	119.0	127.1
February	140.1	147.8	89.2	128.3	152.3	118.2	122.3
March	141.6	149.0	89.0	126.6	164.4	119.6	122.4
April	141.2	148.7	88.5	124.9	161.7	121.5	123.0
May	141.3	149.2	88.8	122.0	165.1	121.5	122.1
June	141.1	149.0	89.0	123.4	159.2	123.8	122.3
July	139.9	146.9	88.7	122.5	164.0	123.0	122.9
August	140.0	148.0	88.7	121.7	156.8	123.0	123.0
September	141.3	149.0	89.3	122.1	164.6	123.0	123.0
October	139.7	146.9	89.5	120.8	162.1	123.0	123.0
November	139.0	146.4	89.4	120.7	159.0	124.3	121.8
December	139.4	146.2	89.7	120.1	170.1	122.3	120.5
2010							
January (a)	138.7	145.3	89.9	120.7	162.6	122.3	123.9
September (a)	109.5	106.7	83.9	114.9	152.2	103.7	106.1
<u>Percentage Change (a)</u>							
Jan 2010 over Dec 2009	-0.5	-0.6	0.2	0.5	-4.4	0.0	2.8
Jan 2010 over Jan 2009	-2.9	-4.2	1.4	-6.0	9.2	2.8	-2.5
IMPORTED ITEMS UNDERLYING INDEX							
Group	All	Food	Clothing and Footwear	Housing and Household Operations	Transport and Communications	Alcohol and Tobacco	Miscell- aneous
<i>Weights</i>	385	288	20	40	2	n.a.	35
2006	105.9	107.3	85.0	104.3	107.8		108.0
2007	113.7	116.7	82.3	106.8	113.1		114.4
2008	127.5	133.2	83.9	112.1	154.4		121.9
2009	139.7	148.2	89.1	117.6	164.6		122.8
2009							
January	142.7	151.7	88.7	118.8	159.1		127.1
February	139.5	147.8	89.2	119.2	159.1		122.3

March	140.4	149.0	89.0	119.6	158.5	122.4
April	140.2	148.7	88.5	118.6	158.5	123.0
May	140.1	149.2	88.8	116.1	154.3	122.1
June	140.3	149.0	89.0	118.5	168.4	122.3
July	138.8	146.9	88.7	118.0	173.3	122.9
August	139.5	148.0	88.7	117.5	173.3	123.0
September	140.3	149.0	89.3	117.5	169.8	123.0
October	138.7	146.9	89.5	116.2	169.8	123.0
November	138.1	146.4	89.4	116.1	166.0	121.8
December	137.8	146.2	89.7	115.5	165.4	120.5
2010						
January (a)	137.4	145.3	89.9	115.1	165.4	123.9
<u>Percentage Change (a)</u>						
Jan 2010 over Dec 2009	-0.3	-0.6	0.2	-0.3	0.0	2.8
Jan 2010 over Jan 2009	-3.7	-4.2	1.4	-3.1	4.0	-2.5

(a): Provisional figures

Note: n.a. Not applicable

Table 4. LOCAL GOODS COMPONENT OF THE CONSUMER PRICE INDEX

(Base Period : Average Prices March 2004 = 100)

Group	All Items	Food	Housing and Household Operations	Transport and Communications	Alcohol and Tobacco	Miscellaneous
<i>Weights</i>	563	215	64	114	105	65
2006	103.0	99.4	108.9	106.5	104.8	100.0
2007	107.6	105.5	118.1	100.4	117.8	100.3
2008	117.5	120.3	128.2	105.8	123.5	108.8
2009	125.7	130.6	135.9	116.5	128.1	111.8
2009						
January	128.1	135.3	141.5	116.6	128.6	110.4
February	127.3	134.3	137.4	116.4	128.6	111.6
March	125.1	128.6	136.6	116.4	128.6	111.6
April	127.1	134.7	134.9	116.4	128.6	110.4
May	129.2	140.4	134.3	116.4	128.7	110.4
June	129.1	139.0	136.2	116.5	128.7	112.4
July	127.8	136.2	134.1	116.5	128.7	112.4
August	125.4	130.2	135.3	116.9	126.9	112.4
September	122.8	123.8	134.1	116.9	126.9	112.4
October	121.5	119.9	135.8	116.9	126.9	112.4
November	120.1	116.2	134.9	116.9	127.7	112.4
December	124.4	128.0	135.1	115.7	127.7	112.4
2010						
January (a)	124.3	124.6	138.6	117.2	127.7	116.7
<u>Percentage Change (a)</u>						
Jan 2010 over Dec 2009	-0.1	-2.7	2.6	1.3	0.0	3.8
Jan 2010 over Jan 2009	-3.0	-7.9	-2.0	0.5	-0.7	5.7
LOCAL ITEMS UNDERLYING INDEX						
Group	All Items	Food	Housing and Household Operations	Transport and Communications	Alcohol and Tobacco	Miscellaneous
<i>Weights</i>	129	99	15	2	n.a.	13
2006	107.7	109.3	104.3	106.8		100.0
2007	113.5	115.5	109.6	122.0		101.3
2008	128.3	134.0	109.6	122.0		101.3
2008	141.3	150.0	115.5	133.8		106.8
2009						

January	141.1	150.0	113.5	143.1	105.8
February	141.6	149.9	114.7	130.6	111.7
March	141.2	149.4	114.9	130.6	111.7
April	140.9	149.6	115.4	130.6	105.8
May	141.1	149.8	116.1	130.6	105.8
June	142.1	151.0	116.9	134.3	105.8
July	141.1	149.9	115.5	134.3	105.8
August	141.4	150.1	116.8	134.3	105.8
September	141.5	150.3	115.6	134.3	105.8
October	141.2	150.1	115.2	134.3	105.8
November	141.0	149.8	115.0	134.3	105.8
December	141.1	149.8	115.8	134.3	105.8
2010					
January (a)	141.7	150.1	116.1	134.3	109.4
<u>Percentage Change (a)</u>					
Jan 2010 over Dec 2009	0.4	0.2	0.3	0.0	3.4
Jan 2010 over Jan 2009	0.4	0.1	2.3	-6.1	3.4

(a): Provisional figures

Note: n.a. Not applicable