

Please address all correspondence
To Government Statistician
In reply, please quote the file reference



File Ref: CPI 03/10

GOVERNMENT OF SAMOA

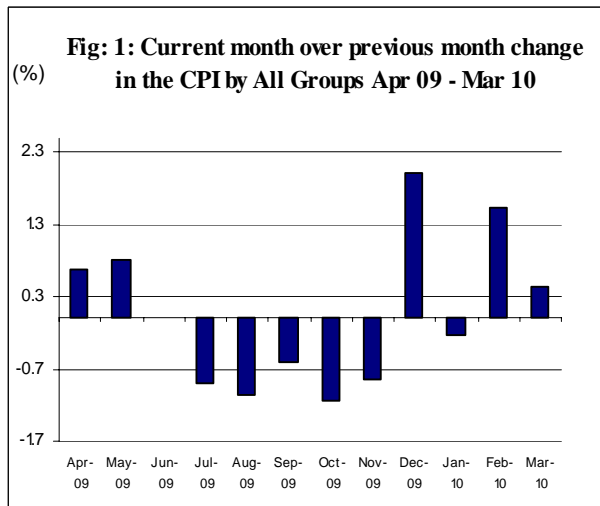
SAMOA BUREAU OF STATISTICS

CONSUMER PRICE INDEX - March 2010

(Based Period: Average Prices March 2004 = 100)

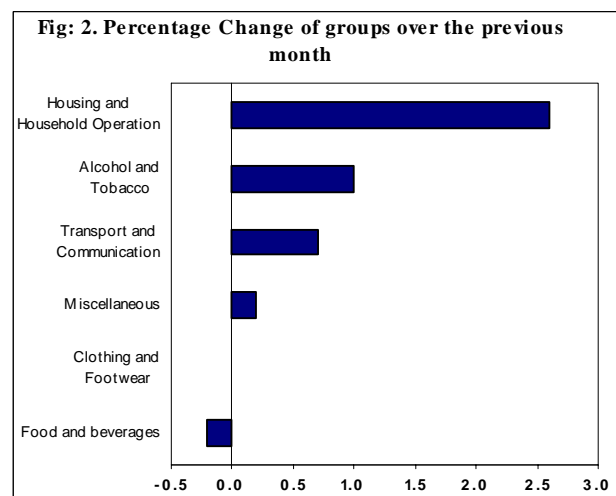
SUMMARY

The All Items Consumer Price Index for the month of March 2010 recorded an increase of 0.5 percent when compared to the previous month, and an increase of 0.7 percent when compared to the same month of last year. Depicted in Fig 1 are the month to month changes in the Consumer Price Index by all groups from April 09 to March 10.



The 0.5 percent increase in the Overall Index is attributed mainly to an increase of

2.6 percent in the Housing and Household Operation group index. Alcohol and Tobacco, Transport and Communication and Miscellaneous group indices also recorded increases of 1.0, 0.7 and 0.2 percent respectively, while Clothing and Footwear group recorded no change from the previous month. On the contrary, Food group index recorded a decrease of 0.2 percent. Graphically presented in Fig 2 is the March 2010 percentage change of groups over February 2010.



Higher prices recorded for electricity (kwh) was the main contributor to the 2.6 percent increase in the Housing and Household Operation group index.



The 1.0 percent increase in the Alcohol and Tobacco group is primarily due to higher prices recorded for Samoan kava and cigarette (Pall Mall Filter and Menthol, Pocket Edition).



Increased prices recorded for fuel (unleaded, diesel) has contributed to the 0.7 percent increase in the Transport and Communication group index.



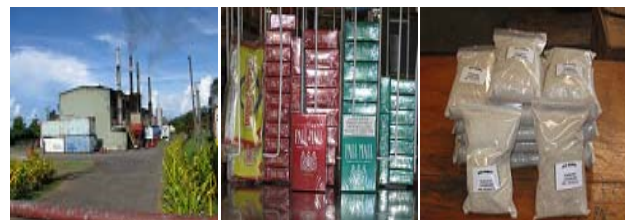
The 0.2 percent decrease in the Food group was primarily due to lower prices recorded for taamu and some vegetables namely pumpkin, chinese cabbages and cucumber.



The imported component registered an increase of 0.6 percent due to higher prices recorded for rice, mutton neck, turkey wings and fuel (unleaded, diesel).

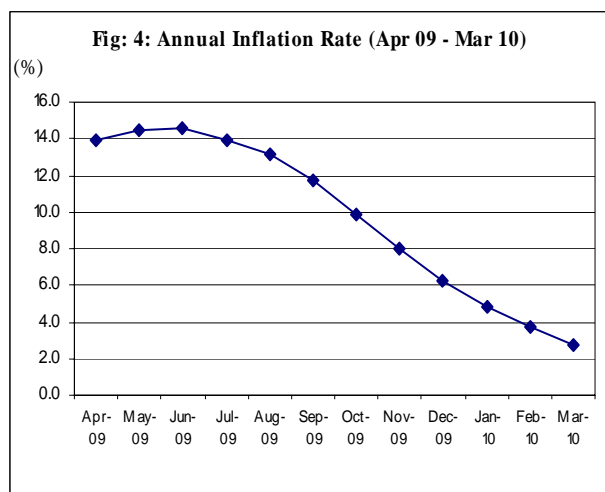


Increased prices recorded for electricity (kwh), Samoan kava and cigarette (Pall Mall Filter and Menthol, Pocket Edition) are the main contributor to the 0.2 percent increase in the local component.



The All Items Underlying Index for March 2010 registered an increase of 0.5 percent when compared to February 2010, and a decrease of 0.7 percent when compared to March 2009. The 0.5 percent increase in the Overall Underlying Index is attributed to an increase of 0.6 percent in the imported component. The local component also increased by 0.4 percent.

The twelve months ending March 2010 compared to the twelve months ending March 2009 registered an increase of 2.7 percent, as illustrated below in Fig 4.



The attached Tables and Graphs provide the user with more detailed analysis.

Muagututia S Reupena.

GOVERNMENT STATISTICIAN

Table 1. CONSUMER PRICE INDEX.**(Base Period : Average Prices March 2004 = 100)**

				Clothing	Housing and	Transport		Alcohol		
Group	All			and	Household	and		and	Miscell-	
	Items		Food	Footwear	Operations	Communications		Tobacco	aneous	
<i>Weights</i>	1000		503	20	111	144		122	100	
2006	105.7		103.9	85.0	111.0	113.5		104.8	102.8	
2007	111.6		111.9	82.3	117.1	109.7		117.4	105.2	
2008	124.5	(b)	127.7	83.9	128.8	124.7	(b)	122.9	113.4	
2009	132.4	(b)	140.7	89.0	130.5	126.8	(b)	127.2	115.6	
2009										
March	132.5	(b)	140.3	89.0	132.3	127.5	(b)	127.4	115.4	
April	133.4	(b)	142.7	88.5	130.6	127.0	(b)	127.7	114.8	
May	134.5	(b)	145.4	88.8	129.0	126.6	(b)	127.7	114.5	
June	134.5	(b)	144.7	89.0	130.7	126.5	(b)	128.0	115.8	
July	133.3	(b)	142.3	88.7	129.1	127.5	(b)	127.9	116.0	
August	131.9	(b)	140.3	88.7	129.5	126.3	(b)	126.3	116.1	
September	131.1	(b)	138.2	89.3	129.0	128.0	(b)	126.3	116.1	
October	129.6	(b)	135.4	89.5	129.3	127.4	(b)	126.3	116.1	
November	128.5	(b)	133.5	89.4	128.8	126.8	(b)	127.2	115.7	
December	131.1	(b)	138.4	89.7	128.7	128.1	(b)	126.9	115.2	
2010										
January	130.8	(b)	136.4	89.9	130.9	127.8	(b)	126.9	119.2	
February	132.8		140.0	90.3	129.8	128.5		128.8	119.5	
March (a)	133.4		139.7	90.3	133.2	129.4		130.1	119.7	
			<i>Percentage Change (a)</i>							
Mar 2010										
over	0.5		-0.2	0.0	2.6	0.7		1.0	0.2	
Feb 2010										
Mar 2010										
over	0.7		-0.4	1.5	0.7	1.5		2.1	3.7	
Mar 2009										
ALL ITEMS UNDERLYING INDEX										
				Clothing	Housing and	Transport		Alcohol		
Group	All			and	Household	and		and	Miscell-	
	Items		Food	Footwear	Operations	Communications		Tobacco	aneous	
<i>Weights</i>	514		387	20	55	4		<i>n.a.</i>	48	
2006	106.3		107.8	85.0	104.3	107.3			105.8	
2007	113.6		116.4	82.3	107.5	117.7			110.7	
2008	127.7		133.4	83.9	112.8	141.8			116.1	
2009	140.1		148.7	89.1	117.0	148.8			118.4	
2009										
March	140.6		149.1	89.0	118.3	144.2			119.4	

Table 2. AVERAGE RETAIL PRICES OF SELECTED COMMODITIES								
Commodities		Unit	2009			2010		
			Jan	Feb	Mar	Jan	Feb	Mar (a)
1	Flour	1 lb	1.48	1.45	1.54	1.33	1.47	1.40
2	Rice	1 lb	2.20	2.06	2.16	1.91	1.86	1.90
3	Salt	1 lb	0.84	0.73	0.72	0.72	0.80	0.80
4	Sugar (Brown)	1 lb	1.03	1.07	1.06	1.09	1.06	1.05
5	Taamu	1 lb	1.96	2.34	2.00	1.30	1.47	0.82
6	Breadfruit	1 lb	0.28	0.66	1.13	0.26	0.14	0.38
7	Potatoes	1 lb	1.67	1.55	1.31	1.36	1.41	1.37
8	Onions	1 lb	1.47	1.38	1.34	1.43	1.44	1.40
9	Taro	1 lb	1.41	1.33	1.35	1.04	0.92	0.91
10	Yam	1 lb	1.48	1.48	1.57	1.36	1.40	1.27
11	Chinese Cabbage	1 lb	2.82	2.36	1.87	3.00	4.72	3.64
12	Head Cabbage	1 lb	5.05	4.76	2.80	2.71	4.20	4.59
13	Cucumbers	1 lb	1.28	1.76	1.53	1.79	2.39	1.80
14	Pumpkins	1 lb	0.70	0.83	0.70	0.81	1.44	1.14
15	Water Cress	1 lb	2.41	3.47	3.21	3.25	6.75	5.98
16	Tomatoes	1 lb	4.32	4.57	3.55	3.61	5.57	7.21
17	Taro leaves	1 lb	3.40	3.27	3.30	4.21	3.10	3.57
18	Bananas	1 lb	0.47	0.59	0.68	0.38	0.33	0.39
19	Coconuts	1 lb	0.20	0.20	0.23	0.27	0.22	0.22
20	String Fish	1 lb	4.41	3.97	3.32	2.35	3.71	3.53
21	Large Fish	1lb	8.11	5.41	4.30	5.54	7.01	6.74
22	Fish (piece)	1lb	6.67	6.20	4.47	5.94	6.02	7.01
23	Mutton Flaps	1 lb	4.23	4.33	4.32	4.51	4.98	5.09
24	Mutton Neck	1 lb	3.76	3.69	3.64	4.06	4.11	4.42
25	Chicken leg quarters	1 lb	2.67	2.30	2.32	2.07	1.87	1.83
26	Turkey Wings	1 lb	3.04	3.04	2.90	3.17	3.22	3.43
27	Pig Trotter	1 lb	3.04	3.28	2.94	2.83	3.01	2.86
28	Eggs	doz	6.61	6.50	6.67	6.01	6.24	6.24
29	Beer (Vailima)	350 mls	3.80	3.80	3.80	3.69	3.50	3.50
30	Spirit (Volka)	nip	8.00	7.67	8.00	8.33	8.00	8.00
31	Spirit (whisky)	nip	7.67	7.67	7.67	7.67	8.00	8.00
32	Cigarettes Pall Mall Filter	20 rolls	7.67	7.67	7.67	7.73	7.90	7.93
33	Cigarettes Pall Mall Menthol	20 rolls	7.67	7.67	7.67	7.73	7.90	7.93
34	Cigarettes (Pocket Edition)	packet	16.10	16.10	16.10	16.33	17.63	17.78
35	Samoa kava	packet	7.88	7.88	7.88	7.88	7.88	8.63
36	Shirt short sleeve white (children)	32 size	14.77	14.87	13.67	15.49	15.67	15.67

37	le Lanutasi (calico)	2yds	6.72	6.98	6.98	7.45	7.50	7.50
----	----------------------	------	------	------	------	------	------	------

38	Handkerchief (men)	each	1.26	1.20	1.20	1.24	1.40	1.40
----	--------------------	------	------	------	------	------	------	------

39	Electricity	kwh	0.89	0.84	0.83	0.85	0.82	0.89
----	-------------	-----	------	------	------	------	------	------

40	PVC pipe (20 ft)	0.5 inch	9.98	10.24	10.24	10.42	11.12	10.72
----	------------------	----------	------	-------	-------	-------	-------	-------

41	Petrol (unleaded)	1 ltr	1.97	2.05	2.35	2.27	2.33	2.44
----	-------------------	-------	------	------	------	------	------	------

42	Diesel	1 ltr	2.39	2.35	2.23	2.29	2.32	2.36
----	--------	-------	------	------	------	------	------	------

43	Magnesium Trisilicate	100mls	7.30	7.97	7.97	8.63	8.63	8.63
----	-----------------------	--------	------	------	------	------	------	------

44	Diapers (Huggies 16kg & over)	24 package	34.76	34.76	34.84	34.48	35.37	35.64
----	-------------------------------	------------	-------	-------	-------	-------	-------	-------

45	Washing soap (yellow)	bar	3.11	2.95	3.03	2.88	2.92	2.87
----	-----------------------	-----	------	------	------	------	------	------

(a) : Provisional figures								
---------------------------	--	--	--	--	--	--	--	--

Table 3. IMPORTED GOODS COMPONENT OF THE CONSUMER PRICE INDEX							
(Base Period : Average Prices March 2004 = 100)							
Group	All	Food	Clothing and Footwear	Housing and Household Operations	Transport and Communications	Alcohol and Tobacco	Miscellaneous
<i>Weights</i>	437	288	20	48	30	17	35
2006	109.2	107.3	85.0	113.9	140.1	104.8	108.0
2007	116.7	116.7	82.3	115.7	145.2	115.2	114.4
2008	133.3	133.2	83.9	129.5	194.6	119.3	122.0
2009	140.6	148.2	89.0	123.5	160.7	121.9	122.8
2009							
March	141.6	149.0	89.0	126.6	164.4	119.6	122.4
April	141.2	148.7	88.5	124.9	161.7	121.5	123.0
May	141.3	149.2	88.8	122.0	165.1	121.5	122.1
June	141.1	149.0	89.0	123.4	159.2	123.8	122.3
July	139.9	146.9	88.7	122.5	164.0	123.0	122.9
August	140.0	148.0	88.7	121.7	156.8	123.0	123.0
September	141.3	149.0	89.3	122.1	164.6	123.0	123.0
October	139.7	146.9	89.5	120.8	162.1	123.0	123.0
November	139.0	146.4	89.4	120.7	159.0	124.3	121.8
December	139.4	146.2	89.7	120.1	170.1	122.3	120.5
2010							
January	138.7	145.3	89.9	120.7	162.6	122.3	123.9
February	139.5	145.4	90.3	121.5	167.3	128.2	124.7
March (a)	140.4	146.4	90.3	121.3	171.3	128.2	125.5
September (a)	109.5	106.7	83.9	114.9	152.2	103.7	106.1
Percentage Change (a)							
Mar 2010							
over	0.6	0.7	0.0	-0.2	2.4	0.0	0.6
Feb 2010							
Mar 2010							
over	-0.8	-1.7	1.5	-4.2	4.2	7.2	2.5
Mar 2009							
IMPORTED ITEMS UNDERLYING INDEX							
Group	All	Food	Clothing and Footwear	Housing and Household Operations	Transport and Communications	Alcohol and Tobacco	Miscellaneous
<i>Weights</i>	385	288	20	40	2	<i>n.a.</i>	35
2006	105.9	107.3	85.0	104.3	107.8		108.0
2007	113.7	116.7	82.3	106.8	113.1		114.4
2008	127.5	133.2	83.9	112.1	154.4		121.9
2009	139.7	148.2	89.1	117.6	164.6		122.8
2009							
March	140.4	149.0	89.0	119.6	158.5		122.4

April	140.2	148.7	88.5	118.6	158.5	123.0
May	140.1	149.2	88.8	116.1	154.3	122.1
June	140.3	149.0	89.0	118.5	168.4	122.3
July	138.8	146.9	88.7	118.0	173.3	122.9
August	139.5	148.0	88.7	117.5	173.3	123.0
September	140.3	149.0	89.3	117.5	169.8	123.0
October	138.7	146.9	89.5	116.2	169.8	123.0
November	138.1	146.4	89.4	116.1	166.0	121.8
December	137.8	146.2	89.7	115.5	165.4	120.5
2010						

January	137.4	145.3	89.9	115.1	165.4	123.9
February	137.6	145.4	90.3	115.6	172.5	124.7
March (a)	138.4	146.4	90.3	115.1	170.0	125.5

Percentage Change (a)

Mar 2010						
over	0.6	0.7	0.0	-0.4	-1.4	0.6

Feb 2010						

Mar 2010						
over	-1.4	-1.7	1.5	-3.8	7.3	2.5

Mar 2009						

(a): Provisional figures

Note: n.a. Not applicable

Table 4. LOCAL GOODS COMPONENT OF THE CONSUMER PRICE INDEX							
(Base Period : Average Prices March 2004 = 100)							
Group	All	Food	Housing and Household Operations	Transport and Communications	Alcohol and Tobacco	Miscellaneous	
<i>Weights</i>	563	215	64	114	105	65	
2006	103.0	99.4	108.9	106.5	104.8	100.0	
2007	107.6	105.5	118.1	100.4	117.8	100.3	
2008	117.6 (b)	120.3	128.2	106.4	(b) 123.5	108.8	
2009	126.0 (b)	130.6	135.9	117.9	(b) 128.1	111.8	
2009							
March	125.4 (b)	128.6	136.6	117.8	(b) 128.6	111.6	
April	127.4 (b)	134.7	134.9	117.8	(b) 128.6	110.4	
May	129.5 (b)	140.4	134.3	117.8	(b) 128.7	110.4	
June	129.4 (b)	139.0	136.2	117.9	(b) 128.7	112.4	
July	128.1 (b)	136.2	134.1	117.9	(b) 128.7	112.4	
August	125.7 (b)	130.2	135.3	118.3	(b) 126.9	112.4	
September	123.1 (b)	123.8	134.1	118.3	(b) 126.9	112.4	
October	121.8 (b)	119.9	135.8	118.3	(b) 126.9	112.4	
November	120.4 (b)	116.2	134.9	118.3	(b) 127.7	112.4	
December	124.7 (b)	128.0	135.1	117.1	(b) 127.7	112.4	
2010							
January	124.6 (b)	124.6	138.6	118.6	(b) 127.7	116.7	
February	127.6	132.8	136.1	118.3	128.9	116.7	
March (a)	127.9	130.9	142.2	118.3	130.4	116.7	
Percentage Change (a)							
Mar 2010							
over	0.2	-1.4	4.5	0.0	1.2	0.0	
Feb 2010							
Mar 2010							
over	2.0	1.8	4.1	0.4	1.4	4.6	
Mar 2009							
LOCAL ITEMS UNDERLYING INDEX							
Group	All	Food	Housing and Household Operations	Transport and Communications	Alcohol and Tobacco	Miscellaneous	
<i>Weights</i>	129	99	15	2	<i>n.a.</i>	13	
2006	107.7	109.3	104.3	106.8		100.0	
2007	113.5	115.5	109.6	122.0		101.3	
2008	128.3	134.0	109.6	122.0		101.3	
2008	141.3	150.0	115.5	133.8		106.8	

2009					
March	141.2	149.4	114.9	130.6	111.7
April	140.9	149.6	115.4	130.6	105.8
May	141.1	149.8	116.1	130.6	105.8
June	142.1	151.0	116.9	134.3	105.8
July	141.1	149.9	115.5	134.3	105.8
August	141.4	150.1	116.8	134.3	105.8
September	141.5	150.3	115.6	134.3	105.8
October	141.2	150.1	115.2	134.3	105.8
November	141.0	149.8	115.0	134.3	105.8
December	141.1	149.8	115.8	134.3	105.8
2010					
January	141.7	150.1	116.1	134.3	109.4
February	142.6	151.2	116.5	134.3	109.4
March (a)	143.1	151.8	116.4	134.3	109.4
Percentage Change (a)					
Mar 2010					
over	0.4	0.4	-0.1	0.0	0.0
Feb 2010					
Mar 2010					
over	0.0	0.0	1.3	2.8	-2.1
Mar 2009					
(a): Provisional figures					
(b): Revised figures					
Note: n.a. Not applicable					