

Please address all correspondence
To Government Statistician
In reply, please quote the file reference



File Ref: CPI 10/09

GOVERNMENT OF SAMOA

SAMOA BUREAU OF STATISTICS

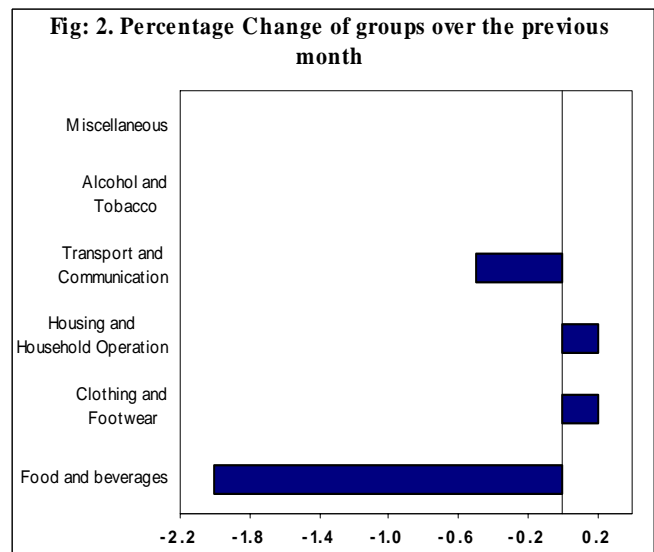
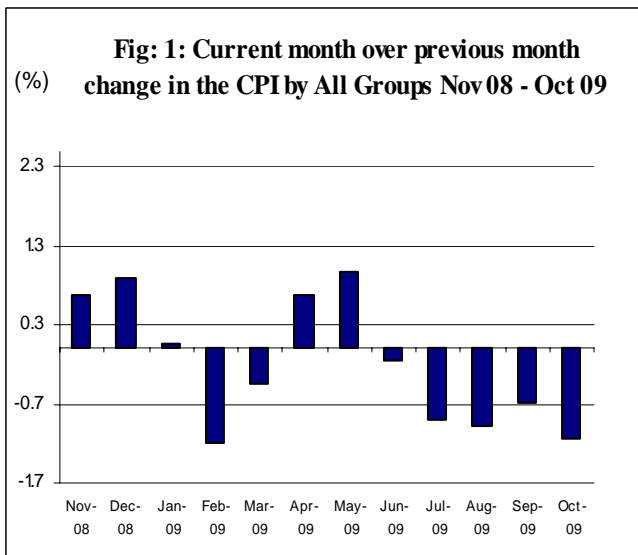
CONSUMER PRICE INDEX - October 2009

(Based Period: Average Prices March 2004 = 100)

SUMMARY

The All Items Consumer Price Index for the month of October 2009 registered a decrease of 1.1 percent when compared to the previous month, and a decrease of 2.1 percent when compared to the same month of last year. Depicted in Fig 1 are the month to month changes in the Consumer Price Index by all groups from November 08 - October 09.

2.0 percent in the Food group. Transport and Communication group also decrease by 0.5 percent. Alcohol and Tobacco and Miscellaneous group indices recorded no change from the previous month. On the contrary, Clothing and Footwear and Housing and Household Operation group indices both registered increases of 0.2 percent. Graphically presented in Fig 2 is the October 2009 percentage change of groups over September 2009.



The 1.1 percent decrease in the Overall Index is attributed mainly to a decrease of

Lower prices recorded for chicken leg quarters, rice, brown sugar, eggs, taro, banana, fresh fish (string, piece) and some vegetables namely chinese cabbages and tomatoes contributed to the 2.0 percent decrease in the Food group index.



The 0.5 percent decrease in the Transport and Communication group was mainly due to lower prices recorded for fuel (unleaded, diesel).



The 0.2 percent increase in the Clothing and Footwear group is primarily due to higher prices recorded for children T-shirts.



Increased prices recorded for electricity (kwh) has contributed to the 0.2 percent increase in the Housing and Household Operation group index.



Decreased prices recorded for chicken leg quarters, rice, brown sugar, eggs and fuel (unleaded, diesel) are the main contributor to the 1.1 percent decrease in the imported component



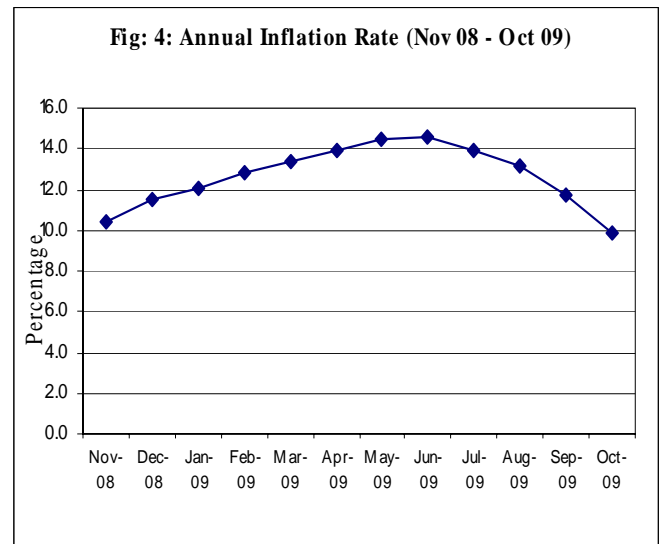
The local component of the Consumer Price Index registered a decrease of 1.0 percent due to lower prices recorded for taro, banana, fresh fish (string, piece) and some vegetables namely chinese cabbages and tomatoes



The All Items Underlying Index for October 2009 registered a decrease of 0.9 percent when compared to September this

year, and an increase of 1.3 percent when compared to October last year. The 0.9 percent decrease in the Overall Underlying Index is attributed to a decrease of 1.1 percent in the imported component. The local component also decreased by 0.2 percent.

The twelve months ending October 2009 compared to the twelve months ending October 2008 shows an increase of 9.9 percent, as illustrated below in Fig 4.

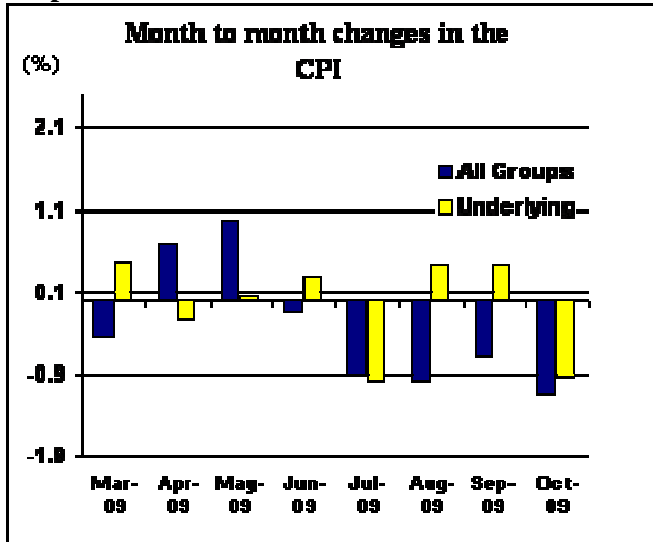


The attached Tables and Graphs provide the user with more detailed analysis.

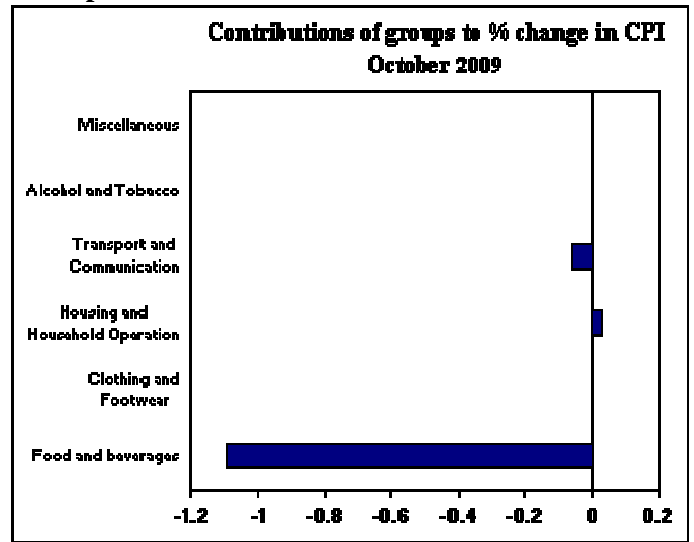
Muagututia S Reupena.

GOVERNMENT STATISTICIAN

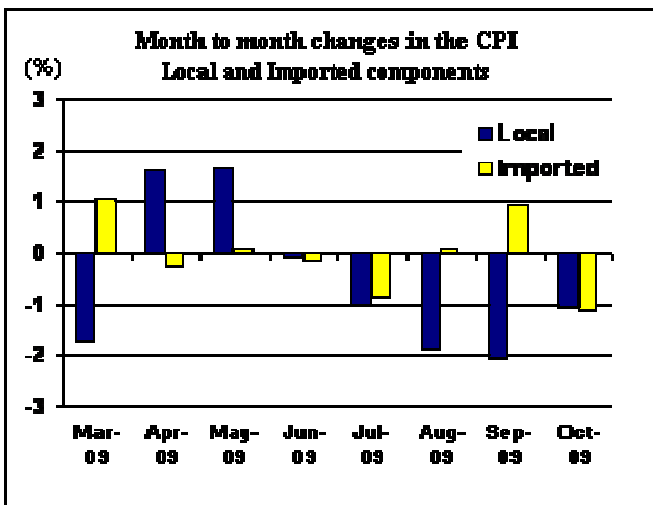
Graph.1



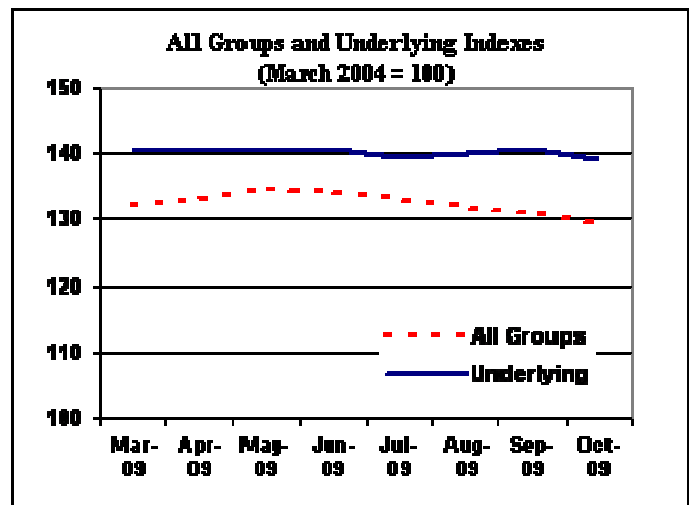
Graph.2



Graph.3



Graph.4



Graph 5

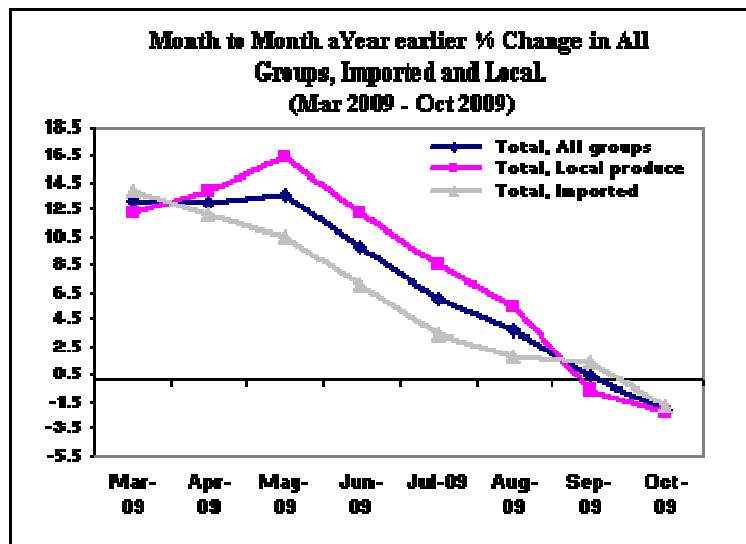


Table 1. CONSUMER PRICE INDEX.

(Base Period : Average Prices March 2004 = 100)

Group	All Items	Food	Clothing and Footwear	Housing and Household Operations	Transport and Communications	Alcohol and Tobacco	Miscellaneous
<i>Weights</i>	1000	503	20	111	144	122	100
2005	101.9	99.9	88.8	107.7	108.1	100.2	101.0
2006	105.7	103.9	85.0	111.0	113.5	104.8	102.8
2007	111.6	111.9	82.3	117.1	109.7	117.4	105.2
2008	124.4	127.7	83.9	128.8	124.3	122.9	113.4
2008							
October	132.3	138.7	83.8	134.6	132.5	125.4	115.3
November	133.2	140.7	86.5	133.1	130.4	127.9	115.3
December	134.4	145.1	88.6	127.9	127.5	127.3	115.5
2009							
January	134.5	144.6	88.7	135.9	123.3	127.3	116.2
February	132.9	142.0	89.2	133.5	123.9	127.2	115.4
March	132.3	140.3	89.0	132.3	126.4	127.4	115.4
April	133.2	142.7	88.5	130.6	125.9	127.7	114.8
May	134.5	145.4	88.8	129.0	126.6	127.7	114.5
June	134.3	144.7	89.0	130.7	125.4	128.0	115.8
July	133.1	142.3	88.7	129.1	126.4	127.9	116.0
August	131.8	140.3	88.7	129.5	125.2	126.3	116.1
September	130.9	138.2	89.3	129.0	126.9	126.3	116.1
October	129.4	135.4	89.5	129.3	126.3	126.3	116.1
<u>Percentage Change (a)</u>							
Oct 2009 over Sep 2009	-1.1	-2.0	0.2	0.2	-0.5	0.0	0.0
Oct 2009 over Oct 2008	-2.2	-2.4	6.8	-3.9	-4.7	0.7	0.7
ALL ITEMS UNDERLYING INDEX							
Group	All Items	Food	Clothing and Footwear	Housing and Household Operations	Transport and Communications	Alcohol and Tobacco	Miscellaneous
<i>Weights</i>	514	387	20	55	4	n.a.	48
2005	102.9	103.5	88.8	104.1	103.4		102.1
2006	106.3	107.8	85.0	104.3	107.3		105.8
2007	113.6	116.4	82.3	107.5	117.7		110.7
2008	127.7	133.4	83.9	112.8	141.8		116.1
2008							
October	137.5	145.7	83.8	115.2	145.2		119.2
November	140.5	149.5	86.5	115.1	145.2		119.4

December 2009	143.3	152.7	88.6	117.2	150.9	119.6
January	142.3	151.2	88.7	117.3	150.9	121.2
February	140.0	148.3	89.2	118.0	144.4	119.4
March	140.6	149.1	89.0	118.3	144.2	119.4
April	140.3	149.0	88.5	117.7	144.2	118.2
May	140.4	149.4	88.8	116.1	142.1	117.6
June	140.8	149.5	89.0	118.1	150.9	117.7
July	139.4	147.7	88.7	117.4	153.2	118.2
August	140.0	148.5	88.7	117.3	153.2	118.3
September	140.6	149.3	89.3	117.0	151.5	118.3
October (a)	139.3	147.7	89.5	115.9	151.5	118.3
<u>Percentage Change (a)</u>						
Oct 2009 over Sep 2009	-0.9	-1.1	0.2	-0.9	0.0	0.0
Oct 2009 over Oct 2008	1.3	1.4	6.8	0.6	4.3	-0.8

(a): Provisional figures

Note: n.a. Not applicable

Table 2. AVERAGE RETAIL PRICES OF SELECTED COMMODITIES

Commodities	Unit	2008			2009			
		Aug	Sep	Oct	Aug	Sep	Oct (a)	
1	Flour	1 lb	1.46	1.47	1.49	1.45	1.45	1.45
2	Rice	1 lb	1.50	1.81	1.89	2.02	2.03	2.00
3	Salt	1 lb	0.71	0.71	0.74	0.67	0.70	0.72
4	Sugar (Brown)	1 lb	0.93	0.92	1.05	1.10	1.10	1.06
5	Taamu	1 lb	2.09	1.59	1.69	1.93	1.43	1.39
6	Breadfruit	1 lb	0.44	0.54	0.50	0.54	0.73	0.66
7	Potatoes	1 lb	1.74	1.65	1.61	1.31	1.34	1.32
8	Onions	1 lb	1.45	1.44	1.44	1.31	1.30	1.42
9	Taro	1 lb	1.44	1.51	1.74	1.63	1.35	1.26
10	Yam	1 lb	1.60	1.57	1.50	1.55	1.40	1.23
11	Chinese Cabbage	1 lb	1.46	1.44	1.50	1.08	1.33	1.03
12	Head Cabbage	1 lb	2.53	2.80	2.11	1.71	1.41	1.51
13	Cucumbers	1 lb	1.28	2.42	1.58	1.10	0.94	1.13
14	Pumpkins	1 lb	0.72	0.75	1.03	0.93	0.77	0.61
15	Water Cress	1 lb	3.07	2.96	4.14	2.78	3.05	2.57
16	Tomatoes	1 lb	2.75	1.46	2.05	3.03	2.54	1.58
17	Taro leaves	1 lb	2.59	2.79	2.78	2.11	3.15	3.63
18	Bananas	1 lb	0.59	0.57	0.56	0.72	0.72	0.58
19	Coconuts	1 lb	0.22	0.27	0.21	0.27	0.22	0.22
20	String Fish	1 lb	4.17	4.40	4.16	3.85	3.84	3.69
21	Large Fish	1lb	5.41	4.78	7.43	7.17	5.36	5.68
22	Fish (piece)	1lb	4.95	5.34	5.57	5.28	4.61	3.89
23	Mutton Flaps	1 lb	3.87	3.93	3.94	4.55	4.55	4.55
24	Mutton Neck	1 lb	3.46	3.43	3.43	3.72	3.73	3.81
25	Turkey Wings	1 lb	2.88	2.93	2.81	3.15	3.43	3.43
26	Chicken leg quarters	1 lb	2.29	2.44	2.64	2.32	2.36	2.21
27	Pig Trotter	1 lb	2.94	2.83	2.95	2.94	2.94	2.90
28	Eggs	doz	6.66	6.61	6.27	6.33	6.47	5.81
29	Beer (Vailima)	350 mls	3.74	3.74	3.74	3.67	3.67	3.67
30	Shirt short sleeve white (children)	32 size	12.55	12.95	12.95	15.67	15.67	15.26
31	Shirt long sleeve (white)	16.5 size	21.51	21.51	21.51	19.78	19.78	19.78
32	le Solosolo	2yds	5.68	5.68	5.68	5.57	5.78	5.78
33	Handkerchief (men)	each	1.24	1.24	1.26	1.10	1.20	1.20
34	T shirt (children)	32 size	7.39	7.39	7.39	7.93	7.93	8.43
35	Tea Towel	each	2.30	2.30	2.30	2.20	2.30	2.03
36	Electricity	kwh	1.01	1.01	0.96	0.81	0.80	0.82

37	Natural gas	20lb	68.43	72.43	72.43	68.70	68.70	68.70
38	Roofing Iron	12ft	49.68	49.68	52.68	60.78	60.78	58.98
39	PVC pipe (20 ft)	0.5 inch	12.24	12.24	11.24	10.18	10.02	10.62
40	Kettle (aluminium)	24 cm	27.90	27.90	27.90	32.30	32.30	32.30
41	Petrol (unleaded)	1 ltr	3.52	3.20	3.11	2.16	2.33	2.26
42	Diesel	1 ltr	4.02	3.64	3.34	2.15	2.27	2.22
43	Kerosene	1 ltr	3.82	3.52	3.26	1.99	2.03	2.01
44	Car Battery (12 volt)	N50	273.33	273.33	273.33	258.33	250.00	250.00
45	Car Tyre (Radial)	205/70(R14)	175.00	177.50	177.50	252.50	252.50	252.50
46	Washing soap (yellow)	bar	2.83	2.95	3.10	2.82	2.90	2.97

(a) : Provisional figures

Table 3. IMPORTED GOODS COMPONENT OF THE CONSUMER PRICE INDEX**(Base Period : Average Prices March 2004 = 100)**

Group	All Items	Food	Clothing and Footwear	Housing and Household Operations	Transport and Communications	Alcohol and Tobacco	Miscellaneous
<i>Weights</i>	437	288	20	48	30	17	35
2005	104.5	103.1	88.8	110.8	122.6	98.9	102.9
2006	109.2	107.3	85.0	113.9	140.1	104.8	108.0
2007	116.7	116.7	82.3	115.7	145.2	115.2	114.4
2008	133.3	133.2	83.9	129.5	194.6	119.3	122.0
2008							
October	142.4	144.6	83.8	134.6	204.1	119.0	126.7
November	144.7	149.5	86.5	131.0	193.9	119.0	126.8
December	145.6	153.7	88.6	129.3	168.8	119.0	127.1
2009							
January	142.8	151.7	88.7	128.4	148.9	119.0	127.1
February	140.1	147.8	89.2	128.3	152.3	118.2	122.3
March	141.6	149.0	89.0	126.6	164.4	119.6	122.4
April	141.2	148.7	88.5	124.9	161.7	121.5	123.0
May	141.3	149.2	88.8	122.0	165.1	121.5	122.1
June	141.1	149.0	89.0	123.4	159.2	123.8	122.3
July	139.9	146.9	88.7	122.5	164.0	123.0	122.9
August	140.0	148.0	88.7	121.7	156.8	123.0	123.0
September	141.3	149.0	89.3	122.1	164.6	123.0	123.0
October (a)	139.7	146.9	89.5	120.8	162.1	123.0	123.0
September (a)	109.5	106.7	83.9	114.9	152.2	103.7	106.1
<u>Percentage Change (a)</u>							
Oct 2009 over Sep 2009	-1.1	-1.4	0.2	-1.1	-1.5	0.0	0.0
Oct 2009 over Oct 2008	-1.9	1.6	6.8	-10.3	-20.6	3.4	-2.9
IMPORTED ITEMS UNDERLYING INDEX							
Group	All Items	Food	Clothing and Footwear	Housing and Household Operations	Transport and Communications	Alcohol and Tobacco	Miscellaneous
<i>Weights</i>	385	288	20	40	2	n.a.	35
2005	102.6	103.1	88.8	105.4	107.0		102.9
2006	105.9	107.3	85.0	104.3	107.8		108.0
2007	113.7	116.7	82.3	106.8	113.1		114.4
2008	127.5	133.2	83.9	112.1	154.4		121.9
2008							
October	136.9	144.6	83.8	115.9	159.1		126.7
November	140.6	149.5	86.5	115.7	159.1		126.8
December	144.2	153.7	88.6	118.5	159.1		127.1

2009						
January	142.7	151.7	88.7	118.8	159.1	127.1
February	139.5	147.8	89.2	119.2	159.1	122.3
March	140.4	149.0	89.0	119.6	158.5	122.4
April	140.2	148.7	88.5	118.6	158.5	123.0
May	140.1	149.2	88.8	116.1	154.3	122.1
June	140.3	149.0	89.0	118.5	168.4	122.3
July	138.8	146.9	88.7	118.0	173.3	122.9
August	139.5	148.0	88.7	117.5	173.3	123.0
September	140.3	149.0	89.3	117.5	169.8	123.0
October (a)	138.7	146.9	89.5	116.2	169.8	123.0
<u>Percentage Change (a)</u>						
Oct 2009 over Sep 2009	-1.1	-1.4	0.2	-1.1	0.0	0.0
Oct 2009 over Oct 2008	1.3	1.6	6.8	0.3	6.7	-2.9

(a): Provisional figures
 Note: n.a. Not applicable

Table 4. LOCAL GOODS COMPONENT OF THE CONSUMER PRICE INDEX**(Base Period : Average Prices March 2004 = 100)**

Group	All Items	Food	Housing and Household Operations	Transport and Communications	Alcohol and Tobacco	Miscellaneous
<i>Weights</i>	563	215	64	114	105	65
2005	99.9	95.7	105.4	104.3	100.4	100.0
2006	103.0	99.4	108.9	106.5	104.8	100.0
2007	107.6	105.5	118.1	100.4	117.8	100.3
2008	117.5	120.3	128.2	105.8	123.5	108.8
2008						
October	124.4	130.8	134.6	113.6	126.4	109.2
November	124.3	128.9	134.6	113.6	129.3	109.2
December	125.6	133.6	126.8	116.6	128.6	109.2
2009						
January	128.1	135.3	141.5	116.6	128.6	110.4
February	127.3	134.3	137.4	116.4	128.6	111.6
March	125.1	128.6	136.6	116.4	128.6	111.6
April	127.1 (b)	134.7	134.9	116.4	128.6	110.4
May	129.2	140.4	134.3	116.4	128.7	110.4
June	129.1	139.0	136.2	116.5	128.7	112.4
July	127.8	136.2	134.1	116.5	128.7	112.4
August	125.4	130.2	135.3	116.9	126.9	112.4
September	122.8	123.8	134.1	116.9	126.9	112.4
October (a)	121.5	119.9	135.8	116.9	126.9	112.4
<u>Percentage Change (a)</u>						
Oct 2009 over Sep 2009	-1.1	-3.2	1.3	0.0	0.0	0.0
Oct 2009 over Oct 2008	-2.3	-8.3	0.9	2.9	0.4	2.9
LOCAL ITEMS UNDERLYING INDEX						
Group	All Items	Food	Housing and Household Operations	Transport and Communications	Alcohol and Tobacco	Miscellaneous
<i>Weights</i>	129	99	15	2	<i>n.a.</i>	13
2005	103.7	104.7	100.8	100.0		100.0
2006	107.7	109.3	104.3	106.8		100.0
2007	113.5	115.5	109.6	122.0		101.3
2008	128.3	134.0	109.6	122.0		101.3
2008						

October	139.3	148.7	113.4	131.9	100.0
November	140.0	149.5	113.5	131.9	100.0
December	140.6	150.1	113.8	143.1	100.0
2009					
January	141.1	150.0	113.5	143.1	105.8
February	141.6	149.9	114.7	130.6	111.7
March	141.2	149.4	114.9	130.6	111.7
April	140.9	149.6	115.4	130.6	105.8
May	141.1	149.8	116.1	130.6	105.8
June	142.1	151.0	116.9	134.3	105.8
July	141.1	149.9	115.5	134.3	105.8
August	141.4	150.1	116.8	134.3	105.8
September	141.5	150.3	115.6	134.3	105.8
October (a)	141.2	150.1	115.2	134.3	105.8
<u>Percentage Change (a)</u>					
Oct 2009 over Sep 2009	-0.2	-0.1	-0.3	0.0	0.0
Oct 2009 over Oct 2008	1.4	0.9	1.6	1.8	5.8

(a): Provisional figures

(b): Revised figures

Note: n.a. Not applicable