

Please address all correspondence  
To Government Statistician  
In reply, please quote the file reference



File Ref: CPI 8/17

GOVERNMENT OF SAMOA

## SAMOA BUREAU OF STATISTICS

# CONSUMER PRICE INDEX August 2017

### Key findings:

The Consumer Price Index for August 2017 increased by 0.9 percent compared to the previous month.

- The Food and Non Alcoholic Beverages index increased by 1.2 percent.
- Transport index also increased by 2.7 percent.
- The Average Annual Inflation for the year ended August 2017 was 1.1 percent.

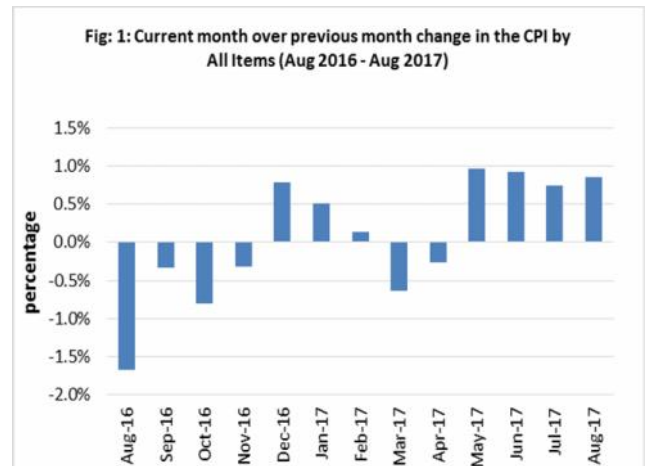
In the year to August 2017, the CPI rose 2.6 percent.

### SUMMARY

The Consumer Price Index for August 2017 was 0.9 percent higher than July 2017, and was 2.6 percent higher than August 2016.

The increase of the Local Goods component by 0.9 percent from the previous month was due to higher prices for airline fare, which was also the main contributor to the increase of 0.9 percent in the All Items Consumer Price Index.

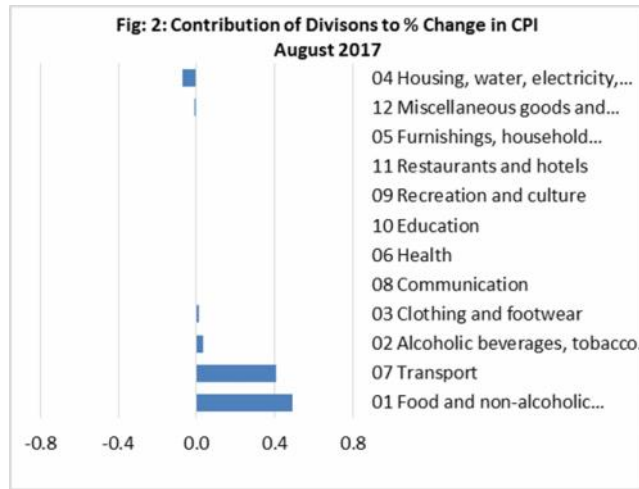
Increased prices recorded for imported food was result in the 0.8 percent increase in the Imported Good Component. Figure 1 shows the month to month percentage changes in the Consumer Price Index by all Divisions from August 2016 to August 2017.



Source : Samoa Bureau of Statistics

## Total All Divisions Contribution

Food and Non Alcoholic Beverages divisions along with Transport were the main contributors to the overall increase of 0.9 percent in the All Division Consumer Price Index.



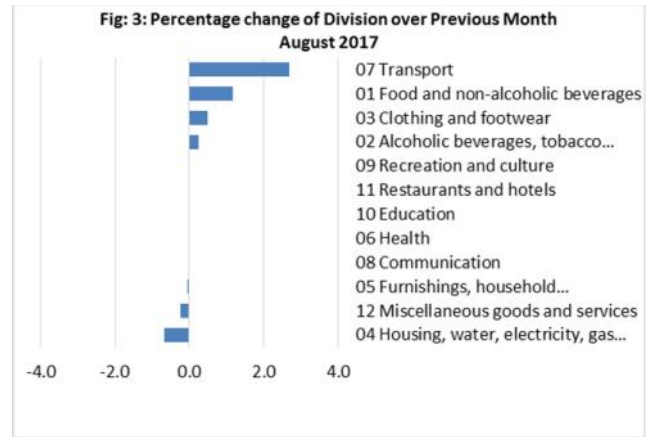
Source : Samoa Bureau of Statistics

## Consumer Price Index (% Change)

The increases recorded for the Food and Non Alcoholic Beverages index from the previous month registered 1.2 percent, Transport index with 2.7 percent, Clothing and Footwear index with 0.5 percent and Alcoholic Beverages and Tobacco index with 0.3 percent.

On the other hand, slight decreases were registered for Housing, Water, Electricity, Gas and other Fuels index with 0.7 percent and Miscellaneous Goods and Services with 0.2 percent respectively.

No changes were recorded for the Furnishing, Household Equipment and Maintenance, Health, Communication, Recreation and culture, Education and Restaurants indices. Graphically presented in Fig 3 is the August 2017 percentage change for all divisions from July 2017.



Source : Samoa Bureau of Statistics

## Local Goods Component

The Local Goods Component of the Consumer Price Index registered an increase of 0.9 percent when compared to the previous month. This increase was mainly due to higher prices recorded for airline fare, taro, fresh fish (piece), koko samoa and taamu.

## Imported Goods Component

Increased prices recorded for chicken leg quarter, raw sugar, rice, mutton flap have resulted in the 0.8 percent increase in the Imported Good Component.

## Food and Non Alcoholic Beverages Index

Higher prices recorded for chicken leg quarter, raw sugar, rice, mutton flap, taro, fresh fish (piece), koko samoa and taamu is reflected in the 1.2 percent increase in the Food and Non Alcoholic Beverages index.

## Transport Index

The 2.7 percent increase in the Transport index was a result of the higher prices recorded for airline fare (Apia-Auckland-Apia).

## Clothing and Footwear

An increase of 0.5 percent in the Clothing and Footwear index was a reflection of the higher prices recorded for school uniform and aloha shirt.

## Housing, Water, Electricity, Gas and other Fuels Index

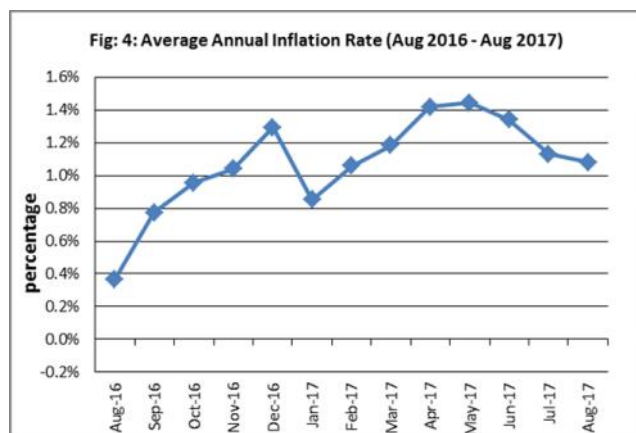
Lower prices recorded for electricity (kwh) and kerosene is reflected in the 0.7 percent decrease in the Housing, Water, Electricity, Gas and other Fuels index.

## Underlying Indices <sup>1/</sup>

The All Items Underlying Index for August 2017 registered an increase of 1.0 percent when compared to July 2017, and an increase of 2.8 percent when compared to August 2016. The Imported Items Underlying Index registered an increase of 1.4 percent, while the Local Items Underlying Index recorded no change from the previous month.

## Inflation Rate

The average annual inflation rate for the year ended August 2017 was 1.1 percent. For the twelve months ending August 2016 the inflation rate was 0.4 percent. Presented in Fig 4 is the Average annual inflation rate (August 2016 - August 2017).



Source : Samoa Bureau of Statistics

The attached Tables and Graphs provide the user with more detailed analysis.

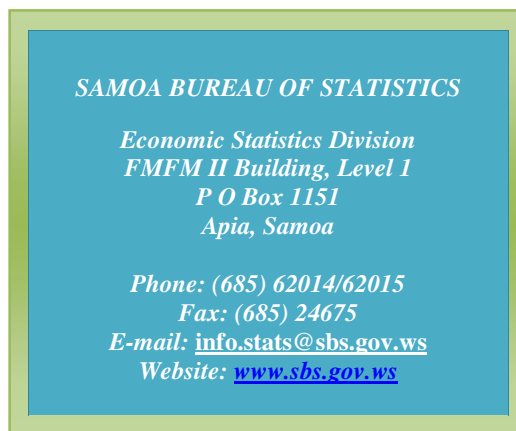
## Technical Notes:

*The Consumer Price (CPI) measures the rate of inflation for Samoa. It is designed to measure the change in prices for the goods purchased by households in Samoa. The CPI measures the change in prices by comparing the prices for a basket of goods and services at the collection period with the price for the same goods in a base period.*

*The basket of goods that is priced is based on the average expenditures of households as recorded in the Household Income and Expenditure Survey (HIES). The HIES survey identifies how much households spend on different items. The more households spend on an item on average, the more important it is to the price index, and the higher the weight in the index.*

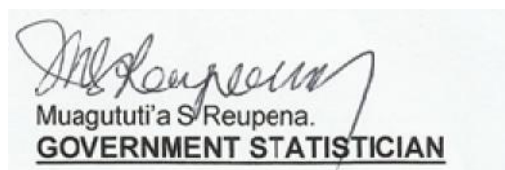
<sup>1/</sup> Monthly movements in the 'headline' CPI series can be volatile. This volatility reflects price changes in particular items that may be due, among other factors, to fluctuations in commodity markets and agricultural conditions, policy changes, or seasonal or infrequent price resetting.

Underlying inflation is a measure of inflation that excludes certain items that face volatile price movements. Underlying inflation eliminates products that can have temporary price shocks because these shocks can diverge from the overall trend of inflation and give a false measure of inflation.



Date of release: 11<sup>th</sup> September 2017

The next Consumer Price Index will be released on 11<sup>th</sup> October 2017.



**Table 1. CONSUMER PRICE INDEX.**  
(Base Period : Average Prices February 2016 = 100)

Group	All Items	Food and Non Alcoholic Beverages	Alcoholic Beverages, Tobacco and Narcotics	Clothing and Footwear	Housing, Water, Electricity, Gas and other Fuels	Furnishings, Household Equipment, and Maintenance	Health	Transport	Communication	Recreation and Culture	Education	Restaurants	Miscellaneous goods and services
<b>Weights</b>	<b>1000.0</b>	<b>403.7</b>	<b>128.4</b>	<b>21.2</b>	<b>119.6</b>	<b>30.8</b>	<b>4.6</b>	<b>148.5</b>	<b>51.5</b>	<b>6.1</b>	<b>19.7</b>	<b>22.4</b>	<b>43.5</b>
Ave - 2014	99.1	94.8	96.1	98.9	114.3	98.9	97.3	115.8	100.1	99.7	98.3	92.2	101.9
Ave - 2015	99.8	97.9	97.7	98.6	106.0	99.7	99.9	108.7	100.0	99.9	100.0	98.7	99.2
Ave - 2016	101.1	103.7	102.8	98.8	92.6	99.4	99.2	101.3	100.0	95.4	101.1	99.3	100.6
2016													
August	101.7	105.2	106.0	97.9	84.5	99.4	96.7	104.3	100.0	93.2	102.2	100.0	101.5
September	101.3	105.0	105.7	97.5	89.1	99.5	96.7	100.0	100.0	91.6	102.2	98.0	100.6
October	100.5	103.3	105.7	97.7	88.1	99.9	101.3	99.9	100.0	91.6	102.2	98.0	99.6
November	100.2	103.0	105.8	97.7	86.0	99.1	101.3	100.4	100.0	91.6	102.2	98.0	99.7
December	101.0	103.3	105.8	97.7	86.3	98.4	101.3	105.0	100.0	90.3	102.2	98.0	99.3
2017													
January	101.5	104.5	106.0	97.6	90.0	98.5	101.3	102.0	100.0	91.6	102.2	98.0	99.1
February	101.6	102.6	106.1	97.8	91.3	98.3	94.5	108.0	100.0	87.7	96.8	98.0	99.6
March	101.0	101.2	105.8	98.6	90.9	99.6	94.5	107.5	100.3	88.5	96.8	98.0	99.3
April	100.7	100.4	107.5	97.5	89.9	99.9	94.5	107.5	100.3	90.1	96.8	98.0	98.6
May	101.7	102.1	107.6	98.5	91.2	99.7	95.3	108.0	100.3	90.1	97.8	98.0	98.2
June	102.6	103.8	107.4	97.0	92.8	99.3	95.3	109.0	100.3	90.4	97.8	98.3	97.5
July	103.4	106.5	108.2	95.0	94.7	99.1	95.3	105.0	100.3	90.4	97.8	98.3	97.4
August (P)	104.3	107.8	108.5	95.4	94.1	99.1	95.3	107.9	100.3	90.4	97.8	98.3	97.2
<b>Percentage Change (P)</b>													
Aug 2017 over Jul 2017	0.9%	1.2%	0.3%	0.5%	-0.7%	0.0%	0.0%	2.7%	0.0%	0.0%	0.0%	0.0%	-0.2%
Aug 2017 over Aug 2016	2.6%	2.4%	2.3%	-2.5%	11.3%	-0.4%	-1.5%	3.4%	0.3%	-2.9%	-4.3%	-1.7%	-4.3%
<b>ALL ITEMS UNDERLYING INDEX</b>													
Group	All Items	Food and Non Alcoholic Beverages	Alcoholic Beverages, Tobacco and Narcotics	Clothing and Footwear	Housing, Water, Electricity, Gas and other Fuels	Furnishings, Household Equipment, and Maintenance	Health	Transport	Communication	Recreation and Culture	Education	Restaurants	Miscellaneous goods and services
<b>Weights</b>	<b>586.7</b>	<b>345.3</b>	<b>n.a</b>	<b>21.2</b>	<b>24.2</b>	<b>30.8</b>	<b>3.5</b>	<b>26.4</b>	<b>51.5</b>	<b>5.6</b>	<b>12.3</b>	<b>22.4</b>	<b>43.5</b>
Ave - 2014	105.0	107.3		98.9	102.2	98.9	96.5	102.9	102.9	95.4	103.5	92.1	102.0
Ave - 2015	102.5	103.5		98.7	101.7	99.7	99.8	101.9	101.9	98.3	103.5	98.7	99.2
Ave - 2016	101.7	103.2		98.8	97.5	99.4	99.0	100.2	100.2	95.0	103.5	99.3	100.6
2016													
August	102.7	104.7		97.9	97.6	99.4	95.7	99.8	100.0	92.6	103.5	100.0	101.5
September	102.7	104.9		97.5	97.5	99.5	95.7	100.9	100.0	90.9	103.5	98.0	100.6
October	102.7	105.0		97.7	97.7	99.9	101.8	100.9	100.0	91.0	103.5	98.0	99.6
November	102.5	104.9		97.7	94.1	99.1	101.8	100.4	100.0	91.0	103.5	98.0	99.7
December	102.2	104.6		97.7	94.1	98.4	101.8	100.0	100.0	89.6	103.5	98.0	99.3
2017													
January	102.4	105.0		97.6	94.3	98.5	101.8	101.2	100.0	91.0	103.5	98.0	99.1
February	101.9	104.4		97.8	94.1	98.3	92.7	101.1	100.0	86.8	94.8	98.0	99.6
March	101.8	104.2		98.6	94.1	99.6	92.7	101.1	100.3	87.6	94.8	98.0	99.3
April	101.2	103.2		97.5	94.3	99.9	92.7	101.2	100.3	89.3	94.8	98.0	98.6
May	101.9	104.1		98.5	94.3	99.7	93.8	103.7	100.3	89.3	96.5	98.0	98.2
June	103.6	107.2		97.0	94.4	99.3	93.8	103.7	100.3	89.7	96.5	98.3	97.5
July	104.5	108.9		95.0	94.4	99.1	93.8	103.7	100.3	89.7	96.5	98.3	97.4
August (P)	105.5	110.7		95.4	94.3	99.1	93.8	103.3	100.3	89.7	96.5	98.3	97.2
<b>Percentage Change (P)</b>													
Aug 2017 over Jul 2017	1.0%	1.7%		0.5%	0.0%	0.0%	0.0%	-0.4%	0.0%	0.0%	0.0%	0.0%	-0.2%
Aug 2017 over Aug 2016	2.8%	5.7%		-2.5%	-3.3%	-0.4%	-2.0%	3.5%	0.3%	-3.2%	-6.8%	-1.7%	-4.3%

Source : Samoa Bureau Statistics

(P) : Provisional figures

Note: n.a. Not applicable

**Table 2. AVERAGE RETAIL PRICES OF SELECTED COMMODITIES**

Commodities	Wt	Unit	2016			2017		
			Jun	Jul	Aug	Jun	Jul	Aug (P)
<b>01 Food and non-alcoholic beverages</b>								
Leg Quarters Chicken	62.2	kg	3.67	3.57	3.52	3.90	4.14	4.35
Raw Sugar	21.3	kg	2.58	2.71	2.63	2.97	2.92	3.12
Bread	17.2	loaf	1.78	1.82	1.80	1.65	1.65	1.65
Corned Beef (a)		12 oz	8.58	8.55	8.67	8.20	8.20	8.20
Taro	15.2	kg	3.14	3.38	2.89	1.35	1.67	1.85
Re-packed medium grain rice	13.4	kg	3.49	3.54	3.52	3.09	3.06	3.17
Prepacked medium grain rice (a)	13.4	907g	3.57	3.47	3.42	3.10	3.13	3.13
Canned fish between \$3.00 and \$3.99 Natural Oil	12.7	15 oz	3.29	3.27	3.39	3.48	3.52	3.44
Bongo	10.2	20grms	0.81	0.81	0.81	0.81	0.81	0.81
Keke Saina Biscuits (a)	9.2	pkt 10	6.08	6.00	6.08	6.28	6.28	6.28
Tip Top Ice Cream (a)	9.2	2 ltr	14.87	14.73	14.73	14.95	14.75	15.03
Ramen maggie	9.0	85gms	1.11	1.10	1.10	1.13	1.13	1.14
Fish (Piece)	7.9	kg	12.72	15.19	16.15	12.45	15.56	16.20
Butter Anchor	7.7	454g	11.71	11.84	11.84	12.47	12.47	12.51
Round Pancake (a)	7.5	sml	0.15	0.15	0.15	0.15	0.15	0.15
Mutton Flaps	6.6	kg	14.79	15.21	15.26	18.56	18.98	19.66
Canned fish \$4:00 or over N/Oil	6.4	15 oz	4.47	4.76	4.82	4.87	4.90	4.94
Canned fish under \$3.00 in N/Oil	6.4	15 oz	2.73	2.68	2.65	2.58	2.60	2.52
Wings Turkey	6.3	kg	5.56	4.89	4.59	4.48	4.69	4.56
Fish (string)	6.0	kg	9.11	8.91	9.88	8.86	8.50	8.33
Fish (large)	6.0	kg	14.72	17.54	17.66	14.30	17.43	15.88
<b>02 Alcoholic beverages, tobacco and narcotics</b>								
Lager Beer	37.9	355 mls	3.38	3.43	3.46	3.45	3.45	3.45
Pall Mall Filter Cigarettes (Red)	24.3	20 rolls	10.50	11.50	11.50	12.00	12.20	12.20
Pall Mall Menthol Cigarettes (Green)	24.3	20 rolls	10.50	11.50	11.50	12.00	12.20	12.20
Beer (a)	16.3	330 mls	3.20	3.31	3.31	3.31	3.30	3.26
Winfield Tobacco (a)	12.6	packet	12.90	14.60	14.60	14.60	14.90	15.00
<b>03 Clothing and footwear</b>								
Uniform le Faitaga College boys	4.3	size 8-10	33.00	33.00	33.00	31.33	31.33	32.33
Uniform Pa'ave (a)	3.7	size 7	33.67	33.67	33.67	32.67	32.33	32.33
<b>04 Housing, water, electricity, gas and other fuels</b>								
Electricity / Cashpower / kwh 1- 100 / total cost per unit / l	50.6	kwh	0.69	0.67	0.70	0.73	0.71	0.70
Reservoir treated Water	28.5	15-40 m3	1.40	1.40	1.40	1.40	1.40	1.40
Liquid gas	15.8	9kg	59.50	59.50	59.50	59.50	59.50	59.50
Government house Rent	12.2	2 b/room	500.00	500.00	500.00	500.00	650.00	650.00
<b>05 Furnishings, household equipment and routine household maintenance</b>								
Washing powder (a)	6.3	200g	1.86	1.88	1.87	1.87	1.87	1.87
Soap yellow Washing soap	5.9	bar	2.86	2.82	2.77	2.78	2.81	2.81
Mosquito coil	4.4	12 coil	1.30	1.45	1.45	1.33	1.28	1.28
<b>06 Health</b>								

Commodities	Wt	Unit	2016			2017		
			Jun	Jul	Aug	Jun	Jul	Aug (P)
Amoxicillin mg Tablets (a)	2.5	500 mg	7.28	6.87	6.87	6.83	6.83	6.83
Hospital Charge	1.1	night	22.50	22.50	22.50	22.50	22.50	22.50
<b>07 Transport</b>								
Petrol	60.8	1 ltr	2.19	2.37	2.40	2.48	2.41	2.35
Taxi Fare PO Motootua Hosp	8.2	per trip	4.80	4.80	4.80	4.80	4.80	4.80
Taxi Fares PO Malua	8.2	per trip	31.30	31.30	31.30	31.30	31.30	31.30
Taxi Fares PO Falefa	8.2	per trip	43.20	43.20	43.20	43.20	43.20	43.20
Air Fares Fagalii Pago Fagalii	6.8	return trip	395.00	395.00	395.00	380.00	380.00	380.00
Air Fares Apia Auckland Apia	6.8	1 month	1382.40	1799.30	1163.90	1881.70	1181.60	2385.65
<b>08 Communication</b>								
Calling per minute Rate cell phone (a)	10.02	per minute	0.45	0.45	0.45	0.45	0.45	0.45
Internet data bundles per mb Rate (a)	10.02	per mb	0.20	0.20	0.20	0.20	0.20	0.20
Calling per minute Rate cell phone (a)	10.02	per minute	0.44	0.44	0.44	0.44	0.44	0.44
Internet data bundles per mb Rate (a)	10.02	per mb	0.20	0.20	0.20	0.20	0.20	0.20
<b>09 Recreation and culture</b>								
Television (a)	2.30	LCD	1132.00	1044.50	1082.83	966.00	966.00	966.00
Exercise Book warwick	1.44	1B4 64 pag	1.30	1.30	1.30	1.37	1.37	1.37
Laptop (a)	1.33	each	3439.00	3217.00	2896.80	2771.60	2771.60	2771.60
<b>10 Education</b>								
Fees PTA Primary Y Urban Registration fees (a)	7.23	Year 6	67.50	72.50	72.50	62.50	62.50	62.50
Fees PTA Secondary Y Urban Registration fees (a)	5.11	Year 10	49.00	48.00	48.00	50.00	50.00	50.00
Fees Tertiary NUS registration School Fees	3.79	registration	292.00	292.00	292.00	292.00	292.00	292.00
Fees Secondary Y Examination Fees (a)	3.61	Y12-13	25.50	25.50	25.50	25.50	25.50	25.50
<b>11 Restaurants and hotels</b>								
Fish & Meal	7.79	1 serve	9.00	9.00	9.00	9.08	9.08	9.08
Curry & Meal	4.87	1 serve	3.33	3.33	3.33	3.00	3.00	3.00
Chicken & Meal (a)	4.87	1 serve	9.36	9.36	9.36	9.36	9.36	9.36
Steam rice & chicken Meal (a)	4.87	1 serve	4.83	4.83	4.83	4.83	4.83	4.83
<b>12 Miscellaneous goods and services</b>								
Paper Sofan deluxe ply Toilet Paper	8.52	250 sheets	1.01	0.99	0.99	0.98	0.94	0.94
Hair Gel	4.59	1124ml	5.27	5.26	5.30	4.91	4.94	4.91
Remains price for Storage of remains (a)	4.41	per day	56.67	56.67	56.67	60.00	60.00	60.00
Basic Casket (a)	4.41	each	1966.67	1966.67	1966.67	1966.67	1966.67	1966.67
Standard Embalming (a)	4.41	1 person	1500.00	1500.00	1500.00	1500.00	1500.00	1500.00
Toilet soap (a)	4.38	90g	1.83	1.83	1.81	1.79	1.84	1.84
Diapers (a)	4.19	5kg-10kg	13.49	13.49	13.34	10.67	10.47	10.27

Source : Samoa Bureau Statistics

(a) : New commodity from February 2016

(P) : Provisional figures

Note : Please note unit of conversion was in pound's (lb's) but been converted into kilograms (kg)

**Table 3. IMPORTED GOODS COMPONENT OF THE CONSUMER PRICE INDEX**  
(Base Period : Average Prices February 2016 = 100)

Group	All Items	Food and Non Alcoholic Beverages	Alcoholic Beverages, Tobacco and Narcotics	Clothing and Footwear	Housing, Water, Electricity, Gas and other Fuels	Furnishings, Household Equipment and Maintenance	Health	Transport	Communication	Recreation and Culture	Education	Restaurants	Miscellaneous goods and services
<b>Weights</b>	<b>494.7</b>	<b>269.1</b>	<b>23.8</b>	<b>15.2</b>	<b>28.3</b>	<b>26.9</b>	<b>2.5</b>	<b>88.6</b>	<b>n.a</b>	<b>5.6</b>	<b>n.a</b>	<b>n.a</b>	<b>34.7</b>
Ave - 2014	110.7	109.6	110.8	100.9	108.7	98.2	98.0	138.3		91.3			102.0
Ave - 2015	104.5	104.5	103.0	99.5	104.5	99.1	100.5	114.0		96.8			99.2
Ave - 2016	102.5	103.9	105.1	98.8	98.7	99.3	98.5	101.8		95.0			100.7
2016													
August	104.9	105.8	109.1	97.9	100.2	99.3	93.8	107.8		92.6			101.9
September	103.7	106.1	109.5	98.0	99.3	99.5	93.8	100.8		90.9			100.8
October	103.6	106.1	109.5	97.6	98.8	99.9	102.5	100.6		91.0			99.5
November	104.1	106.1	110.2	97.7	96.5	99.0	102.5	104.5		91.0			99.1
December	104.6	105.8	110.2	97.8	97.5	98.2	102.5	108.2		89.6			98.6
2017													
January	104.3	106.2	110.2	97.6	96.8	98.3	102.5	105.4		91.0			98.3
February	105.0	105.3	110.2	97.6	98.3	98.1	89.5	112.1		86.8			99.0
March	105.1	105.0	109.7	98.2	98.4	99.5	89.5	113.5		87.6			98.6
April	104.6	104.1	110.3	98.5	98.5	99.8	89.5	112.9		89.3			97.7
May	104.6	105.3	108.6	98.2	97.9	99.6	91.1	110.3		89.3			97.1
June	107.0	109.5	108.9	95.9	98.2	99.2	91.1	111.7		89.7			96.3
July	107.7	111.6	110.1	95.7	97.6	99.0	91.1	109.2		89.7			96.1
August (P)	108.5	113.9	110.5	96.3	96.9	98.9	91.1	107.1		89.7			95.9
<b>Percentage Change (P)</b>													
Aug 2017 over Jul 2017	0.8%	2.1%	0.4%	0.6%	-0.6%	-0.1%	0.0%	-2.0%		0.0%			-0.3%
Aug 2017 over Aug 2016	3.4%	7.7%	1.3%	-1.7%	-3.3%	-0.5%	-2.9%	-0.7%		-3.2%			-5.9%
<b>IMPORTED ITEMS UNDERLYING INDEX</b>													
Group	All Items	Food and Non Alcoholic Beverages	Alcoholic Beverages, Tobacco and Narcotics	Clothing and Footwear	Housing, Water, Electricity, Gas and other Fuels	Furnishings, Household Equipment and Maintenance	Health	Transport	Communication	Recreation and Culture	Education	Restaurants	Miscellaneous goods and services
<b>Weights</b>	<b>401.2</b>	<b>269.1</b>	<b>n.a</b>	<b>15.2</b>	<b>24.2</b>	<b>26.9</b>	<b>2.5</b>	<b>23.0</b>	<b>n.a</b>	<b>5.6</b>	<b>n.a</b>	<b>n.a</b>	<b>34.7</b>
Ave - 2014	107.3	109.6		100.9	102.5	98.2	98.0	108.9		91.3			102.0
Ave - 2015	103.4	104.5		99.5	102.0	99.1	100.5	105.9		96.8			99.2
Ave - 2016	102.4	103.9		98.8	97.5	99.3	98.5	100.1		95.0			100.7
2016													
August	103.6	105.8		97.9	97.6	99.3	93.8	99.5		92.6			101.9
September	103.7	106.1		98.0	97.5	99.5	93.8	100.8		90.9			100.8
October	103.7	106.1		97.6	97.7	99.9	102.5	100.8		91.0			99.5
November	103.4	106.1		97.7	94.1	99.0	102.5	100.2		91.0			99.1
December	103.0	105.8		97.8	94.1	98.2	102.5	99.8		89.6			98.6
2017													
January	103.4	106.2		97.6	94.3	98.3	102.5	101.1		91.0			98.3
February	102.7	105.3		97.6	94.1	98.1	89.5	101.0		86.8			99.0
March	102.6	105.0		98.2	94.1	99.5	89.5	101.0		87.6			98.6
April	102.0	104.1		98.5	94.3	99.8	89.5	101.2		89.3			97.7
May	102.9	105.3		98.2	94.3	99.6	91.1	104.0		89.3			97.1
June	105.5	109.5		95.9	94.4	99.2	91.1	104.0		89.7			96.3
July	106.9	111.6		95.7	94.4	99.0	91.1	104.0		89.7			96.1
August (P)	108.4	113.9		96.3	94.3	98.9	91.1	103.5		89.7			95.9
<b>Percentage Change (P)</b>													
Aug 2017 over Jul 2017	1.4%	2.1%		0.6%	0.0%	-0.1%	0.0%	-0.4%		0.0%			-0.3%
Aug 2017 over Aug 2016	4.6%	7.7%		-1.7%	-3.3%	-0.5%	-2.9%	4.0%		-3.2%			-5.9%

Source : Samoa Bureau Statistics  
(P): Provisional figures  
Note: n.a. Not applicable

**Table 4. LOCAL GOODS COMPONENT OF THE CONSUMER PRICE INDEX**  
(Base Period : Average Prices February 2016 = 100)

Group	All Items	Food and Non Alcoholic Beverages	Alcoholic Beverages, Tobacco and Narcotics	Clothing and Footwear	Housing, Water, Electricity, Gas and other Fuels	Furnishings, Household Equipment and Maintenance	Health	Transport	Communication	Recreation and Culture	Education	Restaurants	Miscellaneous goods and services
<b>Weights</b>	<b>505.3</b>	<b>134.6</b>	<b>104.6</b>	<b>6.0</b>	<b>91.3</b>	<b>3.9</b>	<b>2.2</b>	<b>59.9</b>	<b>51.5</b>	<b>0.4</b>	<b>19.7</b>	<b>22.4</b>	<b>8.8</b>
Ave - 2014	91.9	81.5	93.4	96.3	115.9	100.8	95.8	99.8	100.1	100.0	98.2	92.1	
Ave - 2015	96.9	92.0	96.7	97.6	106.4	101.3	98.2	104.9	100.0	100.0	100.0	98.7	
Ave - 2016	99.7	102.5	102.3	98.6	90.7	100.0	100.0	100.5	100.0	100.0	101.1	99.3	
2016													
August	98.5	104.2	105.3	97.9	79.6	100.0	100.0	99.2	100.0	100.0	102.2	100.0	100.0
September	99.0	102.8	104.8	96.2	86.0	100.0	100.0	98.8	100.0	100.0	102.2	98.0	100.0
October	97.5	97.8	104.8	98.0	84.7	100.0	100.0	98.8	100.0	100.0	102.2	98.0	100.0
November	96.3	96.6	104.8	97.5	82.8	100.0	100.0	94.4	100.0	100.0	102.2	98.0	102.3
December	97.5	98.3	104.8	97.5	82.8	100.0	100.0	100.4	100.0	100.0	102.2	98.0	102.3
2017													
January	98.8	101.1	105.0	97.5	87.9	100.0	100.0	96.8	100.0	100.0	102.2	98.0	102.3
February	98.3	97.1	105.1	98.2	89.2	100.0	100.0	101.8	100.0	100.0	96.8	98.0	102.3
March	97.0	93.7	104.9	99.6	88.5	100.0	100.0	98.6	100.3	100.0	96.8	98.0	102.3
April	97.0	92.9	106.9	94.9	87.3	100.0	100.0	99.5	100.3	100.0	96.8	98.0	102.3
May	98.9	95.8	107.4	99.3	89.2	100.0	100.0	104.4	100.3	100.0	97.8	98.0	102.3
June	98.4	92.6	107.1	99.7	91.1	100.0	100.0	105.1	100.3	100.0	97.8	98.3	102.3
July	99.2	96.4	107.7	93.0	93.8	100.0	100.0	98.9	100.3	100.0	97.8	98.3	102.3
August (P)	100.1	95.5	108.0	93.2	93.2	100.2	100.0	109.0	100.3	100.0	97.8	98.3	102.3
<b>Percentage Change (P)</b>													
Aug 2017 over Jul 2017	0.9%	-0.9%	0.2%	0.3%	-0.7%	0.2%	0.0%	10.3%	0.0%	0.0%	0.0%	0.0%	0.0%
Aug 2017 over Aug 2016	1.7%	-8.3%	2.6%	-4.8%	17.0%	0.2%	0.0%	10.0%	0.3%	0.0%	-4.3%	-1.7%	2.3%

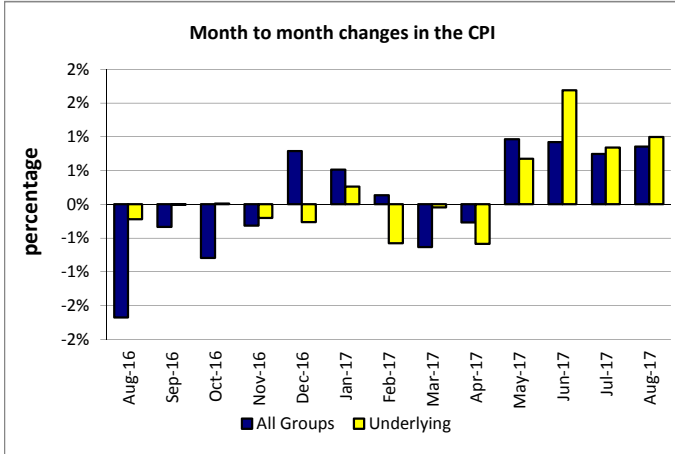
**LOCAL ITEMS UNDERLYING INDEX**

Group	All Items	Food and Non Alcoholic Beverages	Alcoholic Beverages, Tobacco and Narcotics	Clothing and Footwear	Housing, Water, Electricity, Gas and other Fuels	Furnishings, Household Equipment and Maintenance	Health	Transport	Communication	Recreation and Culture	Education	Restaurants	Miscellaneous goods and services
<b>Weights</b>	<b>185.5</b>	<b>76.1</b>	<b>n.a</b>	<b>6.0</b>	<b>n.a</b>	<b>3.9</b>	<b>1.0</b>	<b>3.4</b>	<b>51.5</b>	<b>n.a</b>	<b>12.3</b>	<b>22.4</b>	<b>8.8</b>
Ave - 2014	98.3	99.7		96.3	98.3	100.8	80.0	100.0		100.0		92.1	
Ave - 2015	99.9	100.3		97.6	98.8	101.3	91.7	100.0		100.0		98.7	
Ave - 2016	100.3	100.6		98.6		100.0	100.0	101.0				99.3	
2016													
August	100.6	101.1		97.9		100.0	100.0	101.8	100.0		103.5	100.0	100.0
September	100.3	100.9		96.2		100.0	100.0	101.8	100.0		103.5	98.0	100.0
October	100.3	100.9		98.0		100.0	100.0	101.8	100.0		103.5	98.0	100.0
November	100.3	100.7		97.5		100.0	100.0	101.8	100.0		103.5	98.0	102.3
December	100.3	100.6		97.5		100.0	100.0	101.8	100.0		103.5	98.0	102.3
2017													
January	100.3	100.6		97.5		100.0	100.0	101.8	100.0		103.5	98.0	102.3
February	100.0	101.2		98.2		100.0	100.0	101.8	100.0		94.8	98.0	102.3
March	100.1	101.2		99.6		100.0	100.0	101.8	100.3		94.8	98.0	102.3
April	99.5	100.0		94.9		100.0	100.0	101.8	100.3		94.8	98.0	102.3
May	99.7	99.9		99.3		100.0	100.0	101.8	100.3		96.5	98.0	102.3
June	99.5	99.3		99.7		100.0	100.0	101.8	100.3		96.5	98.3	102.3
July	99.3	99.3		93.0		100.0	100.0	101.8	100.3		96.5	98.3	102.3
August (P)	99.3	99.3		93.2		100.2	100.0	101.8	100.3		96.5	98.3	102.3
<b>Percentage Change (P)</b>													
Aug 2017 over Jul 2017	0.0%	0.0%		0.3%		0.2%	0.0%	0.0%	0.0%		0.0%	0.0%	0.0%
Aug 2017 over Aug 2016	-1.3%	-1.7%		-4.8%		0.2%	0.0%	0.0%	0.3%		-6.8%	-1.7%	2.3%

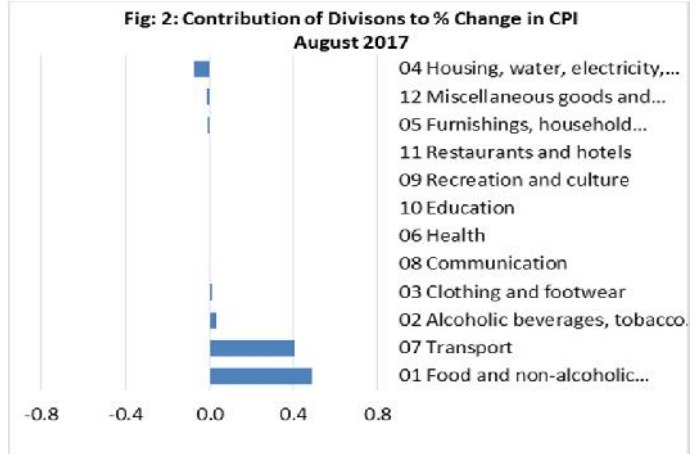
Source : Samoa Bureau Statistics  
(P): Provisional figures  
Note: n.a. Not applicable



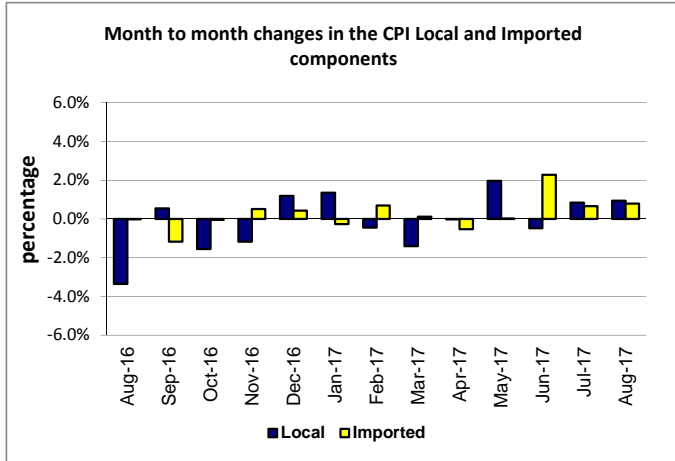
**Graph.1**



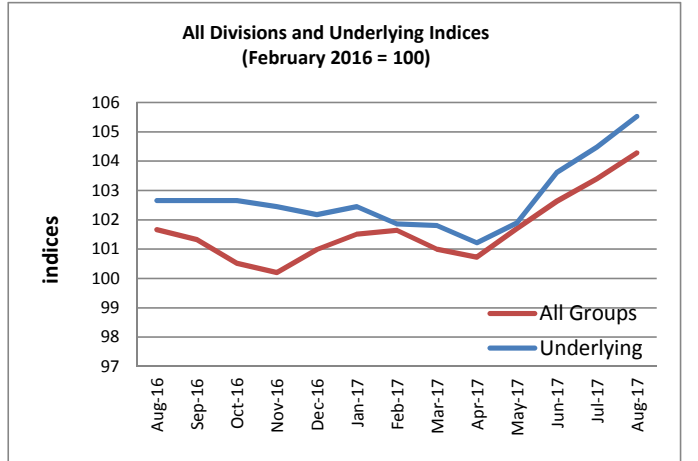
**Graph.2**



**Graph.3**



**Graph.4**



**Graph.5**

