

Please address all correspondence
To Government Statistician
In reply, please quote the file reference



GOVERNMENT OF SAMOA

File Ref: CPI 1/2019

SAMOA BUREAU OF STATISTICS

CONSUMER PRICE INDEX JANUARY 2019

Key findings:

With the beginning of a calendar year, the Consumer Price Index for January 2019 decreased by 1.6 percent compared to the previous month.

- Significant decreases in the global price of oil has pushed local prices down for fuel reflected in the 8.4 percent decline in the Transport index and contributed the most to the decline of the All Item Index.
- Clothing and Footwear index also decreased by 2.7 percent.
- Alcoholic Beverages and Tobacco index increased by 1.6 percent.
- The Average Annual Inflation for the year ended January 2019 was 3.7 percent.

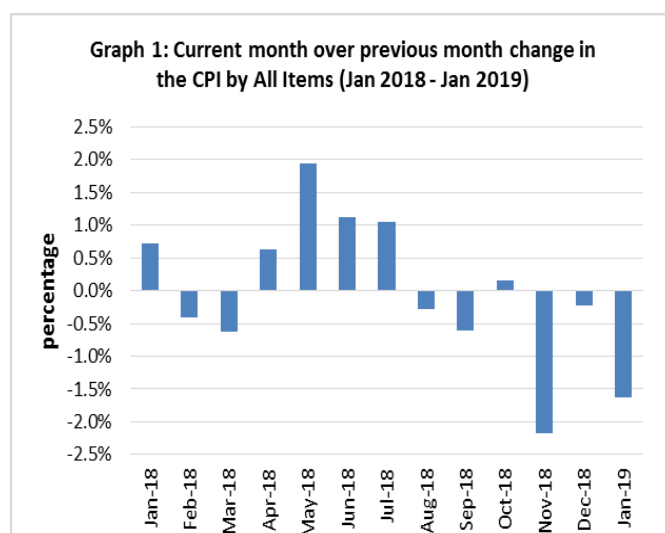
The CPI fell 1.1 percent from January 2018.

SUMMARY

The Consumer Price Index for January 2019 was 1.6 percent lower than in December 2018 and was 1.1 percent lower than January 2018.

The decrease of the Imported Goods Component by 3.1 percent reflects lower prices for fuel and imported food which also contributed to the decrease of 1.6 percent in the All Items Consumer Price Index.

The Local Goods Component also registered a decrease of 0.2 percent from the previous month. Graph 1 shows the month to month percentage changes in the Consumer Price Index by all Divisions from January 2018 to January 2019.

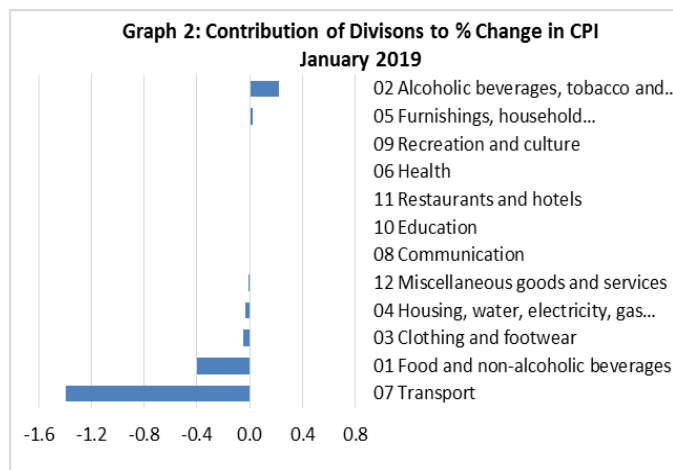


Source : Samoa Bureau of Statistics

Total All Divisions Contribution

As depicted in Graph 2, Transport and Food and Non Alcoholic Beverages divisions were the main contributors to the overall decrease of 1.6 percent in the All Division Consumer Price Index.

On the other hand there were offsetting contributions from Alcoholic Beverages and Tobacco division with 0.2 percent increase.



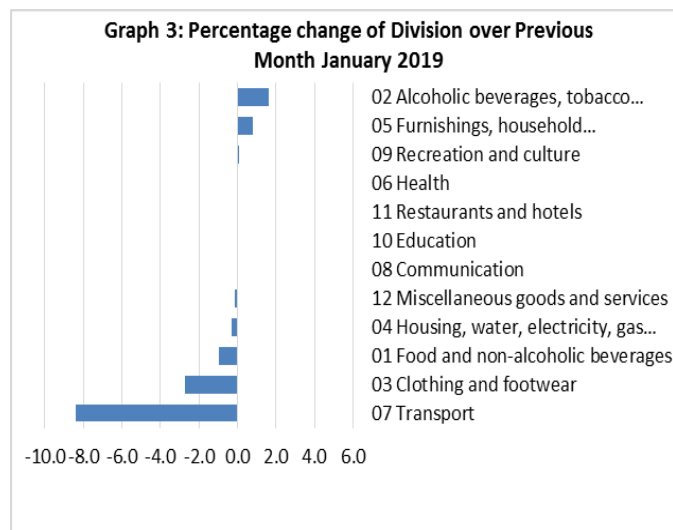
Source : Samoa Bureau of Statistics

Consumer Price Index (% Change)

The 1.6 percent decrease in the Overall Index was mainly due to a decrease of 8.4 percent in Transport index. Clothing and Footwear index recorded a decrease of 2.7 percent influenced by back to school sales for school uniform and footwear items, while Food and Non Alcoholic Beverages, Housing, Water, Electricity Gas and Other Fuel and Miscellaneous Goods and Services indices showed decreases of 1.0, 0.3 and 0.2 percent respectively

On the contrary, increases were recorded for Alcoholic Beverages and Tobacco with 1.6 percent stemming from increased prices for cigarettes, Furnishing, Household Equipment and Maintenance with 0.8 percent and Recreation and culture with 0.1 percent.

No changes were recorded for the Health, Communication, Education and Restaurants indices. Graphically presented in Graph 3 is the January 2019 percentage change for all divisions from December 2018.



Source : Samoa Bureau of Statistics

Imported Goods Component

The Imported Goods Component of the Consumer Price Index registered a decrease of 3.1 percent when compared to the previous month. This decrease was mainly due to lower prices recorded for fuel (petrol, diesel and kerosene), chicken leg quarter, rice, milk and school uniform.

Local Goods Component

Decreased prices recorded for airline fare (Apia-Auckland-Apia) have resulted in the 0.2 percent decrease in the Local Good Component.

Transport Index

Lower prices recorded for fuel (petrol and diesel) and airline fare (Apia-Auckland-Apia) is reflected in the 8.4 percent decrease in the Transport Index.

Clothing and Footwear Index

A decrease of 2.7 percent in the Clothing and Footwear index is reflected in the lower prices recorded for school uniform, running shoe and jandals.

Food and Non Alcoholic Beverages Index

The 1.0 percent decrease in the Food and Non Alcoholic Beverages index was mainly due to lower prices recorded for chicken leg quarter, rice, milk, taro, fresh fish (piece), ripe banana and taamu.

Alcoholic Beverages and Tobacco Index

The Alcoholic Beverages and Tobacco index recorded an increase of 1.6 percent higher due to the rise in prices recorded for beer and cigarettes (Filter and Menthol).

Furnishings, Household Equipment, and Maintenance Index

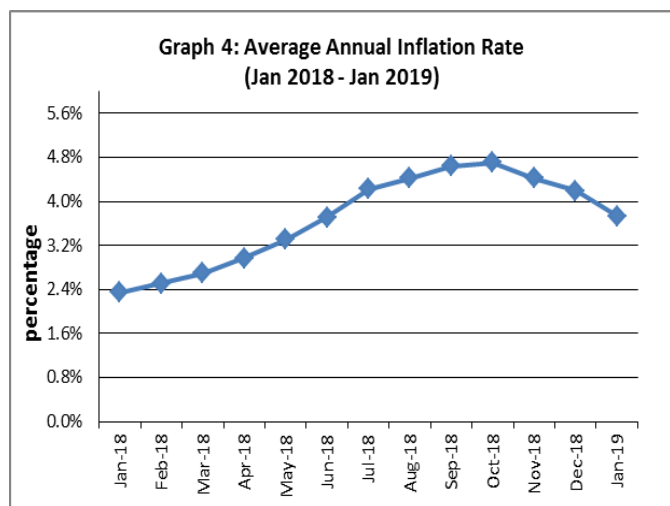
The 0.8 percent increase in the Furnishing, Household, Equipment and Maintenance Index was mainly due to higher prices recorded for washing powder and washing soap.

Underlying Indices ^{1/}

The All Items Underlying Index for January 2019 registered a decrease of 1.1 percent when compared to December 2018, and a decrease of 3.2 percent when compared to January 2018. The Imported Items Underlying Index registered a decrease of 1.6 percent, while the Local Items Underlying Index recorded no change from the previous month.

Inflation Rate

The average annual inflation rate for the year ended January 2019 was 3.7 percent. For the twelve months ending January 2018 the inflation rate was 2.4 percent. Presented in Graph 4 is the average annual inflation rate (January 2018 - January 2019).



Source : Samoa Bureau of Statistics

The attached Tables and Graphs provide the user with more detailed analysis.

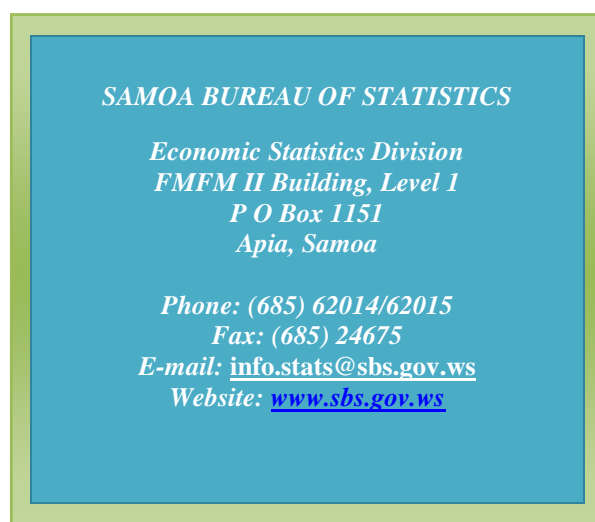
Technical Notes:

The Consumer Price (CPI) measures the rate of inflation for Samoa. It is designed to measure the change in prices for the goods purchased by households in Samoa. The CPI measures the change in prices by comparing the prices for a basket of goods and services at the collection period with the price for the same goods in a base period.

The basket of goods that is priced is based on the average expenditures of households as recorded in the Household Income and Expenditure Survey (HIES). The HIES survey identifies how much households spend on different items. The more households spend on an item on average, the more important it is to the price index, and the higher the weight in the index.

^{1/} *Monthly movements in the 'headline' CPI series can be volatile. This volatility reflects price changes in particular items that may be due, among other factors, to fluctuations in commodity markets and agricultural conditions, policy changes, or seasonal or infrequent price resetting.*

Underlying inflation is a measure of inflation that excludes certain items that face volatile price movements. Underlying inflation eliminates products that can have temporary price shocks because these shocks can diverge from the overall trend of inflation and give a false measure of inflation.



Date of release: 11th February 2019.

The next Consumer Price Index will be released on 11th March 2019.

Aliimuamua Malaefono Tauā - T.Faasalaina
GOVERNMENT STATISTICIAN/(CEO)

Table 1. CONSUMER PRICE INDEX.

(Base Period : Average Prices February 2016 = 100)

Group	All Items	Food and Non Alcoholic Beverages	Alcoholic Beverages, Tobacco and Narcotics	Clothing and Footwear	Housing, Water, Electricity, Gas and other Fuels	Furnishings, Household Equipment, and Maintenance	Health	Transport	Communication	Recreation and Culture	Education	Restaurants	Miscellaneous goods and services
<i>Weights</i>	1000.0	403.7	128.4	21.2	119.6	30.8	4.6	148.5	51.5	6.1	19.7	22.4	43.5
<i>Ave - 2016</i>	101.1	103.7	102.8	98.8	92.6	99.4	99.2	101.3	100.0	95.4	101.1	99.3	100.6
<i>Ave - 2017</i>	102.9	105.1	107.6	96.6	92.2	99.1	95.6	107.3	101.2	90.7	97.9	98.3	98.1
<i>Ave - 2018</i>	107.2	111.0	112.3	95.3	91.0	98.0	97.0	115.0	103.3	92.6	110.4	99.0	97.8
2018													
January	105.7	108.6	110.3	95.7	93.0	98.3	95.3	113.5	103.4	91.7	97.8	98.6	97.5
February	105.3	108.2	110.6	94.7	90.9	98.6	95.3	111.3	103.4	92.9	111.6	98.6	97.6
March	104.7	106.8	110.9	94.6	89.4	99.0	95.3	112.0	103.4	92.9	111.6	98.6	96.8
April	105.3	107.9	111.1	95.0	90.7	98.8	95.3	111.9	103.4	93.2	111.6	98.6	97.5
May	107.4	112.1	112.5	95.0	89.8	98.4	95.3	113.6	103.4	93.2	111.6	98.6	97.9
June	108.6	115.3	112.1	95.0	88.1	97.3	95.3	115.2	103.4	93.2	111.6	98.6	97.6
July	109.7	116.7	112.0	95.0	89.7	97.6	98.5	117.4	103.4	93.2	111.6	98.6	98.3
August	109.4	115.6	113.2	95.0	92.9	97.2	98.5	114.9	103.4	92.0	111.6	98.6	98.1
September	108.7	113.1	113.6	94.8	93.5	98.2	98.5	116.1	103.4	92.0	111.6	98.6	97.9
October	108.9	112.4	113.8	96.0	95.2	97.9	98.5	117.4	103.4	93.8	111.6	98.6	98.0
November	106.5	108.1	113.6	96.2	89.7	97.6	98.5	117.8	103.4	92.3	111.6	100.6	98.0
December	106.3	107.0	113.6	96.3	89.6	96.8	99.9	119.3	102.9	90.9	111.6	100.6	98.2
2019													
January (P)	104.6	106.0	115.4	93.7	89.4	97.6	99.9	109.3	102.9	91.0	111.6	100.6	98.1
<u>Percentage Change (P)</u>													
Jan 2019 over Dec 2018	-1.6%	-1.0%	1.6%	-2.7%	-0.3%	0.8%	0.0%	-8.4%	0.0%	0.1%	0.0%	0.0%	-0.2%
Jan 2019 over Jan 2018	-1.1%	-2.4%	4.6%	-2.0%	-3.9%	-0.7%	4.8%	-3.7%	-0.5%	-0.8%	14.1%	2.0%	0.6%

Source : Samoa Bureau Statistics

(P) : Provisional figures

Note : n.a. Not applicable

Table 2. ALL ITEMS UNDERLYING INDEX

(Base Period : Average Prices February 2016 = 100)

Group	All Items	Food and Non Alcoholic Beverages	Alcoholic Beverages, Tobacco and Narcotics	Clothing and Footwear	Housing, Water, Electricity, Gas and other Fuels	Furnishings, Household Equipment, and Maintenance	Health	Transport	Communication	Recreation and Culture	Education	Restaurants	Miscellaneous goods and services
<i>Weights</i>	586.7	345.3	<i>n.a</i>	21.2	24.2	30.8	3.5	26.4	51.5	5.6	12.3	22.4	43.5
<i>Ave - 2016</i>	101.7	103.2		98.8	97.5	99.4	99.0	100.2		95.0		99.3	100.6
<i>Ave - 2017</i>	104.1	107.9		96.6	93.8	99.1	94.2	104.2	101.2	90.0	96.7	98.3	98.1
<i>Ave - 2018</i>	106.6	110.8		95.3	93.4	98.0	96.0	110.8	103.3	92.0	114.0	99.0	97.8
2018													
January	105.4	109.5		95.7	92.5	98.3	93.8	112.3	103.4	91.0	96.5	98.6	97.5
February	105.8	109.3		94.7	94.1	98.6	93.8	112.1	103.4	92.4	115.6	98.6	97.6
March	104.7	107.5		94.6	93.3	99.0	93.8	112.1	103.4	92.4	115.6	98.6	96.8
April	104.6	107.3		95.0	92.9	98.8	93.8	112.5	103.4	92.7	115.6	98.6	97.5
May	106.9	111.1		95.0	93.1	98.4	93.8	112.5	103.4	92.7	115.6	98.6	97.9
June	109.7	116.0		95.0	93.3	97.3	93.8	112.3	103.4	92.7	115.6	98.6	97.6
July	109.2	115.2		95.0	93.2	97.6	98.0	111.3	103.4	92.7	115.6	98.6	98.3
August	108.8	114.7		95.0	92.6	97.2	98.0	111.3	103.4	91.3	115.6	98.6	98.1
September	107.9	113.0		94.8	92.9	98.2	98.0	109.9	103.4	91.4	115.6	98.6	97.9
October	107.7	112.7		96.0	94.0	97.9	98.0	107.7	103.4	93.3	115.6	98.6	98.0
November	105.5	108.8		96.2	94.5	97.6	98.0	107.8	103.4	91.7	115.6	100.6	98.0
December	103.1	105.0		96.3	94.1	96.8	99.8	108.2	102.9	90.2	115.6	100.6	98.2
2019													
January (P)	102.0	103.2		93.7	94.5	97.6	99.8	107.5	102.9	90.3	115.6	100.6	98.1
<u>Percentage Change (P)</u>													
Jan 2019 over Dec 2018	-1.1%	-1.7%		-2.7%	0.5%	0.8%	0.0%	-0.6%	0.0%	0.1%	0.0%	0.0%	-0.2%
Jan 2019 over Jan 2018	-3.2%	-5.7%		-2.0%	2.2%	-0.7%	6.5%	-4.3%	-0.5%	-0.8%	19.7%	2.0%	0.6%

Source : Samoa Bureau Statistics

(P) : Provisional figures

Note : n.a. Not applicable

Table 3. AVERAGE RETAIL PRICES OF SELECTED COMMODITIES

Commodities	Wt	Unit	2017			2018		2019
			Nov	Dec	Jan	Nov	Dec	Jan (P)
01 Food and non-alcoholic beverages								
Leg Quarters Chicken	62.2	kg	4.45	4.39	4.06	4.01	3.44	3.13
Raw Sugar	21.3	kg	3.05	2.96	2.95	2.63	2.69	2.69
Bread	17.2	loaf	1.68	1.68	1.68	1.68	1.68	1.68
Corned Beef (a)	15.9	12 oz	8.22	8.22	8.22	8.15	8.15	8.13
Taro	15.2	kg	1.65	1.81	2.08	2.66	3.03	2.99
Re-packed medium grain rice	13.4	kg	3.19	3.20	3.21	3.21	3.23	3.18
Prepacked medium grain rice (a)	13.4	907g	3.05	3.05	3.19	3.08	3.02	3.02
Canned fish between \$3.00 and \$3.99 Natural Oil	12.7	15 oz	3.47	3.50	3.51	3.45	3.50	3.47
Bongo	10.2	20grms	0.83	0.83	0.83	0.82	0.81	0.81
Keke Saina Biscuits (a)	9.2	pkt 10	6.48	6.38	6.40	6.50	6.25	6.29
Tip Top Ice Cream (a)	9.2	2 ltr	15.03	15.07	15.03	15.07	15.32	15.32
Ramen maggie	9.0	85gms	1.14	1.12	1.12	1.10	1.12	1.11
Fish (Piece)	7.9	kg	15.02	14.31	16.82	18.21	25.39	19.02
Butter Anchor	7.7	454g	13.64	13.24	13.46	13.46	13.54	13.61
Round Pancake (a)	7.5	sml	0.15	0.15	0.15	0.15	0.15	0.15
Mutton Flaps	6.6	kg	21.15	20.85	20.95	21.92	22.03	22.34
Canned fish \$4:00 or over N/Oil	6.4	15 oz	4.77	4.83	4.58	4.75	4.85	4.88
Canned fish under \$3.00 in N/Oil	6.4	15 oz	2.52	2.50	2.53	2.78	2.53	2.53
Wings Turkey	6.3	kg	6.88	6.97	6.70	6.15	6.08	6.08
Fish (string)	6.0	kg	7.95	9.01	11.06	9.81	10.94	11.68
Fish (large)	6.0	kg	15.55	15.86	18.58	16.28	18.60	21.00
02 Alcoholic beverages, tobacco and narcotics								
Lager Beer	37.9	355 mls	3.43	3.44	3.46	3.54	3.55	3.60
Pall Mall Filter Cigarettes (Red)	24.3	20 rolls	12.20	12.20	12.60	13.00	13.00	13.40
Pall Mall Menthol Cigarettes (Green)	24.3	20 rolls	12.20	12.20	12.60	13.00	13.00	13.40
Beer (a)	16.3	330 mls	3.31	3.31	3.34	3.35	3.35	3.36
Winfield Tobacco (a)	12.6	packet	15.00	15.00	15.00	15.00	15.00	15.00
03 Clothing and footwear								
Uniform le Faitaga College boys	4.3	size 8-10	32.33	32.33	32.33	31.33	31.33	29.33
Uniform Pa'ave (a)	3.7	size 7	32.67	32.67	32.67	34.67	34.67	34.67
04 Housing, water, electricity, gas and other fuels								
Electricity / Cashpower / kw h 1- 100 / total cost per t	50.6	kw h	0.71	0.67	0.67	0.58	0.58	0.58
Reservoir treated Water	28.5	15-40 m3	1.40	1.40	1.40	1.40	1.40	1.40
Liquid gas	15.8	9kg	59.50	59.50	59.50	62.00	62.00	62.00
Government house Rent	12.2	2 b/room	650.00	650.00	650.00	650.00	650.00	650.00
05 Furnishings, household equipment and routine household maintenance								
Washing powder (a)	6.3	200g	1.84	1.84	1.84	1.79	1.72	1.73
Soap yellow Washing soap	5.9	bar	2.92	2.94	2.94	2.85	2.85	2.90
Mosquito coil	4.4	10 coil	1.28	1.20	1.18	1.28	1.28	1.30

06 Health

Amoxicillin mg Tablets (a)	2.5	500 mg	6.83	6.83	6.83	7.53	7.92	7.92
Hospital Charge	1.1	night	22.50	22.50	22.50	22.50	22.50	22.50

07 Transport

Petrol	60.8	1 ltr	2.53	2.56	2.70	2.97	2.89	2.57
Taxi Fare PO Motootua Hosp	8.2	per trip	4.80	4.80	4.80	4.80	4.80	4.80
Taxi Fares PO Malua	8.2	per trip	31.30	31.30	31.30	31.30	31.30	31.30
Taxi Fares PO Falefa	8.2	per trip	43.20	43.20	43.20	43.20	43.20	43.20
Air Fares Fagalii Pago Fagalii	6.8	return trip	380.00	380.00	380.00	395.00	395.00	395.00
Air Fares Apia Auckland Apia	6.8	1 month	1380.10	1489.07	1480.93	1271.10	2035.67	1066.87

08 Communication

Calling per minute Rate cell phone (a)	10.02	per minute	0.45	0.45	0.45	0.45	0.45	0.45
Internet data bundles per mb Rate (a)	10.02	per mb	0.25	0.25	0.25	0.25	0.25	0.25
Calling per minute Rate cell phone (a)	10.02	per minute	0.44	0.44	0.44	0.44	0.44	0.44
Internet data bundles per mb Rate (a)	10.02	per mb	0.20	0.20	0.20	0.20	0.20	0.20

09 Recreation and culture

Television (a)	2.30	LCD	1007.83	1007.83	966.00	1010.67	966.00	968.83
Exercise Book w arw ick	1.44	1B4 64 pa	1.37	1.37	1.37	1.37	1.35	1.35
Laptop (a)	1.33	each	2808.60	2808.60	2952.60	2842.00	2878.60	2878.60

10 Education

Fees PTA Primary Y Urban Registration fees (a)	7.23	Year 6	62.50	62.50	62.50	82.50	82.50	82.50
Fees PTA Secondary Y Urban Registration fees (a)	5.11	Year 10	50.00	50.00	50.00	52.00	52.00	52.00
Fees Tertiary NUS registration School Fees	3.79	registratio	292.00	292.00	292.00	320.00	320.00	320.00
Fees Secondary Y Examination Fees (a)	3.61	Y12-13	25.50	25.50	25.50	25.50	25.50	25.50

11 Restaurants and hotels

Fish & Chip Meal	7.79	1 serve	9.17	9.17	9.17	9.17	9.17	9.17
Curry & Chopsuey Meal	4.87	1 serve	3.00	3.00	3.00	3.33	3.33	3.33
Chicken & Chips Meal (a)	4.87	1 serve	9.36	9.36	9.36	9.36	9.36	9.36
Steam rice & chicken Meal (a)	4.87	1 serve	4.83	4.83	4.83	4.83	4.83	4.83

12 Miscellaneous goods and services

Paper Sofan deluxe ply Toilet Paper	8.52	250 sheet:	0.98	0.98	0.98	1.01	1.01	1.01
Hair Gel	4.59	1124ml	4.81	4.81	4.77	4.36	4.36	4.36
Remains price for Storage of remains (a)	4.41	per day	60.00	60.00	60.00	60.00	60.00	60.00
Basic Casket (a)	4.41	each	1966.67	1966.67	1966.67	1966.67	1966.67	1966.67
Standard Embalming (a)	4.41	1 person	1500.00	1500.00	1500.00	1500.00	1500.00	1500.00
Toilet soap (a)	4.38	90g	1.83	1.83	1.83	1.85	1.86	1.85
Diapers (a)	4.19	5kg-10kg	10.04	9.94	9.94	9.36	9.21	9.21

Source : Samoa Bureau Statistics

(a) : New commodity from February 2016

(P) : Provisional figures

Note : Please note unit of conversion was in pound's (lb's) but been converted into kilograms (kg)

Table 4. IMPORTED GOODS COMPONENT OF THE CONSUMER PRICE INDEX
(Base Period : Average Prices February 2016 = 100)

Group	All Items	Food and Non Alcoholic Beverages	Alcoholic Beverages, Tobacco and Narcotics	Clothing and Footwear	Housing, Water, Electricity, Gas and other Fuels	Furnishings, Household Equipment and Maintenance	Health	Transport	Communication	Recreation and Culture	Education	Restaurants	Miscellaneous goods and services
<i>Weights</i>	494.7	269.1	23.8	15.2	28.3	26.9	2.5	88.6	<i>n.a</i>	5.6	<i>n.a</i>	<i>n.a</i>	34.7
<i>Ave - 2016</i>	102.5	103.9	105.1	98.8	98.7	99.3	98.5	101.8		95.0			100.7
<i>Ave - 2017</i>	107.3	110.1	110.0	97.0	97.6	98.9	91.7	111.2		90.0			97.1
<i>Ave - 2018</i>	111.9	113.8	113.5	96.1	100.6	97.6	94.3	124.0		92.0			96.6
2018													
January	110.3	112.1	110.5	96.9	98.7	98.0	91.1	121.6		91.0			96.3
February	110.0	111.8	110.3	95.5	99.9	98.4	91.1	120.5		92.4			96.4
March	108.8	109.5	110.7	95.4	99.8	98.8	91.1	121.2		92.4			95.4
April	108.4	109.4	110.7	95.5	99.2	98.5	91.1	119.3		92.7			96.3
May	111.6	114.3	114.9	95.6	99.3	98.1	91.1	120.7		92.7			96.8
June	115.5	120.5	115.0	95.6	100.6	96.9	91.1	123.8		92.7			96.5
July	115.6	119.4	115.0	95.5	101.0	97.2	97.1	127.2		92.7			97.2
August	114.7	118.8	115.0	95.5	100.1	96.7	97.1	124.5		91.3			97.1
September	113.9	116.6	115.0	95.5	100.9	97.9	97.1	126.2		91.4			96.8
October	113.8	116.2	115.0	97.0	101.9	97.5	97.1	126.5		93.3			96.9
November	111.7	111.1	115.0	97.2	103.0	97.2	97.1	129.6		91.7			96.9
December	108.6	106.2	115.0	97.6	102.9	96.3	99.8	127.3		90.2			97.2
2019													
January (P)	105.2	103.9	115.0	94.5	101.8	97.2	99.8	116.3		90.3			97.0
<u>Percentage Change (P)</u>													
Jan 2019 over Dec 2018	-3.1%	-2.2%	0.0%	-3.3%	-1.1%	0.9%	0.0%	-8.6%		0.1%			-0.2%
Jan 2019 over Jan 2018	-4.6%	-7.3%	4.1%	-2.5%	3.2%	-0.8%	9.5%	-4.3%		-0.8%			0.7%

Source : Samoa Bureau Statistics

(P) : Provisional figures

Note : n.a. Not applicable

Table 5. IMPORTED ITEMS UNDERLYING INDEX

(Base Period : Average Prices February 2016 = 100)

Group	All Items	Food and Non Alcoholic Beverages	Alcoholic Beverages, Tobacco and Narcotics	Clothing and Footwear	Housing, Water , Electricity, Gas and other Fuels	Furnishings, Household Equipment and Maintenance	Health	Transport	Communication	Recreation and Culture	Education	Restaurants	Miscellaneous goods and services
Weights	401.2	269.1	n.a	15.2	24.2	26.9	2.5	23.0	n.a	5.6	n.a	n.a	34.7
Ave - 2016	102.4	103.9		98.8	97.5	99.3	98.5	100.1		95.0			100.7
Ave - 2017	106.0	110.1		97.0	93.8	98.9	91.7	104.5		90.0			97.1
Ave - 2018	108.8	113.8		96.1	93.4	97.6	94.3	111.2		92.0			96.6
2018													
January	107.7	112.1		96.9	92.5	98.0	91.1	113.3		91.0			96.3
February	107.5	111.8		95.5	94.1	98.4	91.1	112.6		92.4			96.4
March	105.9	109.5		95.4	93.3	98.8	91.1	112.6		92.4			95.4
April	105.9	109.4		95.5	92.9	98.5	91.1	113.1		92.7			96.3
May	109.2	114.3		95.6	93.1	98.1	91.1	113.1		92.7			96.8
June	113.2	120.5		95.6	93.3	96.9	91.1	112.9		92.7			96.5
July	112.6	119.4		95.5	93.2	97.2	97.1	111.7		92.7			97.2
August	112.0	118.8		95.5	92.6	96.7	97.1	111.7		91.3			97.1
September	110.6	116.6		95.5	92.9	97.9	97.1	110.1		91.4			96.8
October	110.3	116.2		97.0	94.0	97.5	97.1	107.5		93.3			96.9
November	106.9	111.1		97.2	94.5	97.2	97.1	107.7		91.7			96.9
December	103.6	106.2		97.6	94.1	96.3	99.8	108.1		90.2			97.2
2019													
January (P)	101.9	103.9		94.5	94.5	97.2	99.8	107.3		90.3			97.0
<u>Percentage Change (P)</u>													
Jan 2019 over Dec 2018	-1.6%	-2.2%		-3.3%	0.5%	0.9%	0.0%	-0.7%		0.1%			-0.2%
Jan 2019 over Jan 2018	-5.3%	-7.3%		-2.5%	2.2%	-0.8%	9.5%	-5.3%		-0.8%			0.7%

Source : Samoa Bureau Statistics

(P) : Provisional figures

Note : n.a. Not applicable

Table 6. LOCAL GOODS COMPONENT OF THE CONSUMER PRICE INDEX
(Base Period : Average Prices February 2016 = 100)

Group	All Items	Food and Non Alcoholic Beverages	Alcoholic Beverages, Tobacco and Narcotics	Clothing and Footwear	Housing, Water, Electricity, Gas and other Fuels	Furnishings, Household Equipment and Maintenance	Health	Transport	Communication	Recreation and Culture	Education	Restaurants	Miscellaneous goods and services
Weights	505.3	134.6	104.6	6.0	91.3	3.9	2.2	59.9	51.5	0.4	19.7	22.4	8.8
Ave - 2016	99.7	102.5	102.3	98.6	90.7	100.0	100.0	100.5	100.0	100.0	101.1	99.3	
Ave - 2017	98.6	95.0	107.1	95.7	90.6	100.1	100.0	101.6	101.2	100.0	97.9	98.3	102.3
Ave - 2018	102.6	105.3	112.0	93.3	88.1	100.3	100.0	101.7	103.3	100.0	110.4	99.0	102.3
2018													
January	101.3	101.6	110.3	92.6	91.3	100.3	100.0	101.5	103.4	100.0	97.8	98.6	102.3
February	100.7	101.0	110.7	92.8	88.1	100.3	100.0	97.7	103.4	100.0	111.6	98.6	102.3
March	100.6	101.2	110.9	92.8	86.2	100.3	100.0	98.3	103.4	100.0	111.6	98.6	102.3
April	102.3	104.9	111.1	93.7	88.1	100.3	100.0	100.8	103.4	100.0	111.6	98.6	102.3
May	103.2	107.8	112.0	93.7	86.8	100.3	100.0	103.1	103.4	100.0	111.6	98.6	102.3
June	101.8	104.9	111.4	93.7	84.3	100.3	100.0	102.4	103.4	100.0	111.6	98.6	102.3
July	103.9	111.3	111.3	93.7	86.2	100.3	100.0	102.8	103.4	100.0	111.6	98.6	102.3
August	104.2	109.2	112.8	93.6	90.6	100.3	100.0	100.8	103.4	100.0	111.6	98.6	102.3
September	103.6	106.1	113.3	93.0	91.3	100.3	100.0	101.1	103.4	100.0	111.6	98.6	102.3
October	104.1	104.9	113.5	93.6	93.2	100.3	100.0	104.1	103.4	100.0	111.6	98.6	102.3
November	101.5	101.9	113.3	93.5	85.5	100.3	100.0	100.2	103.4	100.0	111.6	100.6	102.3
December	104.0	108.7	113.2	93.0	85.5	100.3	100.0	107.5	102.9	100.0	111.6	100.6	102.3
2019													
January (P)	103.9	110.1	115.5	91.8	85.5	100.3	100.0	98.8	102.9	100.0	111.6	100.6	102.3
<u>Percentage Change (P)</u>													
Jan 2019 over Dec 2018	-0.2%	1.4%	2.0%	-1.2%	0.0%	0.0%	0.0%	-8.0%	0.0%	0.0%	0.0%	0.0%	0.0%
Jan 2019 over Jan 2018	2.5%	8.4%	4.7%	-0.9%	-6.3%	0.0%	0.0%	-2.6%	-0.5%	0.0%	14.1%	2.0%	0.0%

Source : Samoa Bureau Statistics

(P) : Provisional figures

Note : n.a. Not applicable

Table 7. LOCAL ITEMS UNDERLYING INDEX

(Base Period : Average Prices February 2016 = 100)

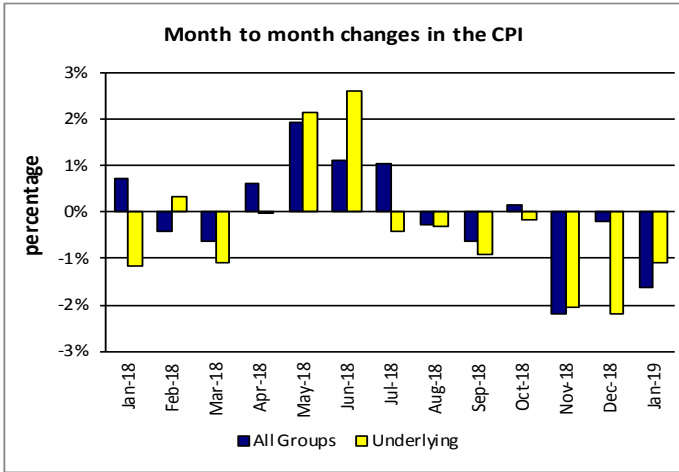
Group	All Items	Food and Non Alcoholic Beverages	Alcoholic Beverages, Tobacco and Narcotics	Clothing and Footwear	Housing, Water, Electricity, Gas and other Fuels	Furnishings, Household Equipment and Maintenance	Health	Transport	Communication	Recreation and Culture	Education	Restaurants	Miscellaneous goods and services
Weights	185.5	76.1	n.a	6.0	n.a	3.9	1.0	3.4	51.5	n.a	12.3	22.4	8.8
Ave - 2016	100.3	100.6		98.6		100.0	100.0	101.0				99.3	
Ave - 2017	99.9	100.1		95.7		100.1	100.0	101.8	101.2		96.7	98.3	102.3
Ave - 2018	101.9	100.3		93.3		100.3	100.0	108.3	103.3		114.0	99.0	102.3
2018													
January	100.6	100.2		92.6		100.3	100.0	105.7	103.4		96.5	98.6	102.3
February	102.0	100.4		92.8		100.3	100.0	108.6	103.4		115.6	98.6	102.3
March	102.0	100.3		92.8		100.3	100.0	108.6	103.4		115.6	98.6	102.3
April	101.9	100.0		93.7		100.3	100.0	108.6	103.4		115.6	98.6	102.3
May	101.8	99.8		93.7		100.3	100.0	108.6	103.4		115.6	98.6	102.3
June	102.0	100.2		93.7		100.3	100.0	108.6	103.4		115.6	98.6	102.3
July	101.9	100.0		93.7		100.3	100.0	108.6	103.4		115.6	98.6	102.3
August	101.9	100.2		93.6		100.3	100.0	108.6	103.4		115.6	98.6	102.3
September	102.0	100.3		93.0		100.3	100.0	108.6	103.4		115.6	98.6	102.3
October	102.0	100.4		93.6		100.3	100.0	108.6	103.4		115.6	98.6	102.3
November	102.4	100.7		93.5		100.3	100.0	108.6	103.4		115.6	100.6	102.3
December	102.2	100.7		93.0		100.3	100.0	108.6	102.9		115.6	100.6	102.3
2019													
January (P)	102.2	100.7		91.8		100.3	100.0	108.6	102.9		115.6	100.6	102.3
<u>Percentage Change (P)</u>													
Jan 2019 over Dec 2018	0.0%	0.0%		-1.2%		0.0%	0.0%	0.0%	0.0%		0.0%	0.0%	0.0%
Jan 2019 over Jan 2018	1.6%	0.5%		-0.9%		0.0%	0.0%	2.7%	-0.5%		19.7%	2.0%	0.0%

Source : Samoa Bureau Statistics

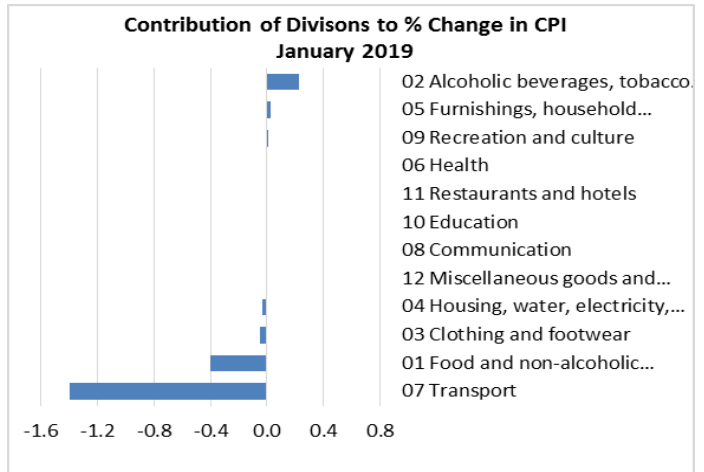
(P) : Provisional figures

Note : n.a. Not applicable

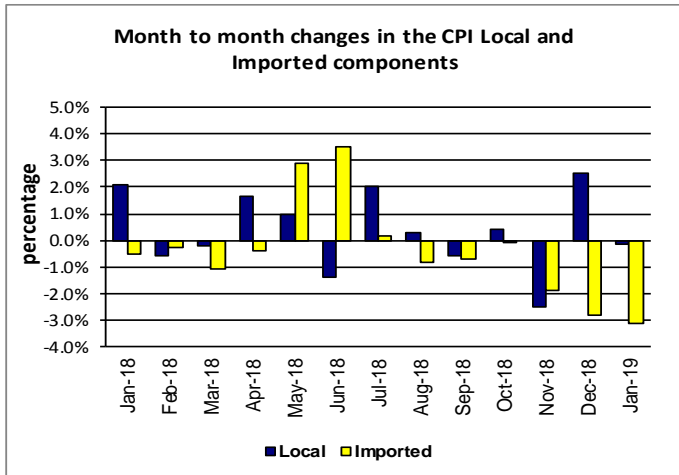
Graph.5



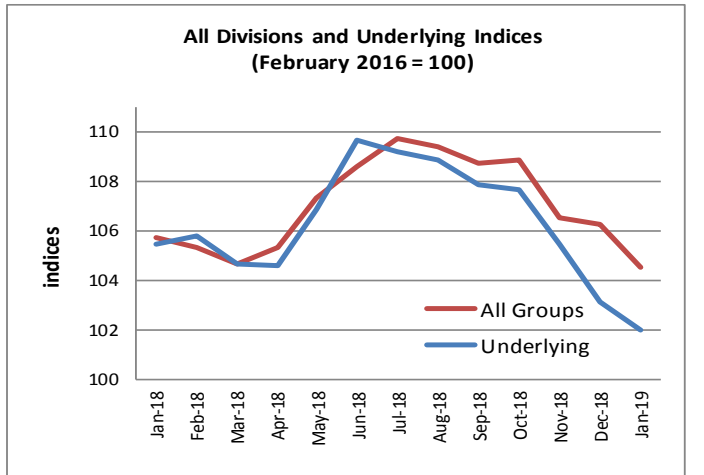
Graph.6



Graph.7



Graph.8



Graph.9

