

Please address all correspondence
To Government Statistician
In reply, please quote the file reference



GOVERNMENT OF SAMOA

File Ref: CPI 12/18

SAMOA BUREAU OF STATISTICS

CONSUMER PRICE INDEX December 2018

Key findings:

The Consumer Price Index for December 2018 decreased by 0.2 percent compared to the previous month.

- Recreation and Culture index decreased by 1.5 percent.
- The Food and Non Alcoholic Beverages index also decreased by 0.9 percent.
- Health index increased by 1.4 percent.
- The Average Annual Inflation for the year ended December 2018 was 4.2 percent.

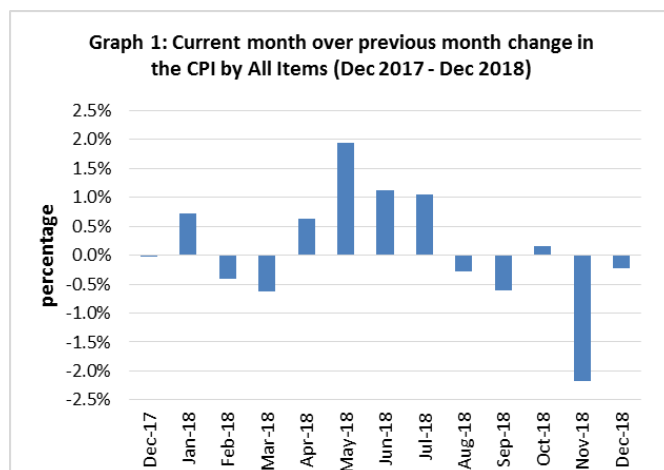
In the year to December 2018, the CPI rose 1.2 percent.

SUMMARY

The Consumer Price Index for December 2018 was 0.2 percent lower than in November 2018 and was 1.2 percent higher than December 2017.

The decrease of the Imported Goods Component by 2.8 percent reflects lower prices for imported food and television (LCD) which also contributed to the decrease of 0.2 percent in the All Items Consumer Price Index.

The Local Goods Component recorded an increase of 2.6 percent over November 2018. Graph 1 shows the month to month percentage changes in the Consumer Price Index by all Divisions from December 2017 to December 2018.

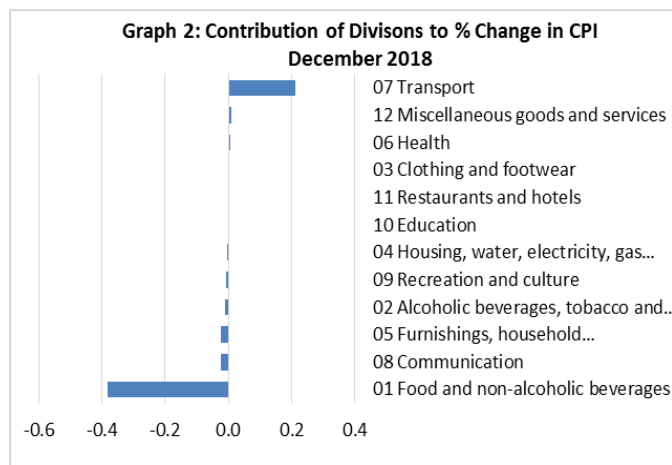


Source : Samoa Bureau of Statistics

Total All Divisions Contribution

The Food and Non Alcoholic Beverages division, with a negative contribution of 0.38 percent, was the main contributor to the overall decrease of 0.2 percent in the All Division Consumer Price Index

On the other hand, there was offsetting positive contribution from the Transport division with 0.21 percent.



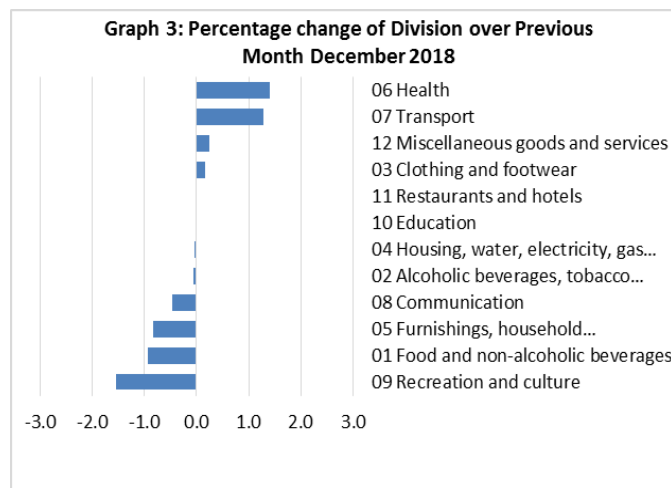
Source : Samoa Bureau of Statistics

Consumer Price Index (% Change)

The 0.2 percent decrease in the Overall Index was mainly due to a decrease of 1.5 percent in the Recreation and Culture index. The Food and Non Alcoholic Beverages, Furnishing, Household Equipment and Maintenance, Communication and Alcoholic Beverages and Tobacco indices showed decreases of 0.9, 0.8, 0.5 and 0.1 percent respectively.

On the contrary, increases were recorded for other divisions namely Health with 1.4 percent and Transport with 1.3 percent. Clothing and Footwear and Miscellaneous Goods and Services indices both registered slight increases of 0.2 percent.

No changes were recorded for the Housing, Water, Electricity, Gas and other Fuels, Education and Restaurants indices. Graphically presented in Graph 3 is the December 2018 percentage change for all divisions from November 2018.



Source : Samoa Bureau of Statistics

Imported Goods Component

The Imported Goods Component of the Consumer Price Index registered a decrease of 2.8 percent when compared to the previous month. This decrease was mainly due to lower prices recorded for chicken leg quarter, rice, canned fish, pig trotter, apple, fuel (petrol) and television (LCD).

Local Goods Component

Increased prices recorded for local food and airline fare have resulted in the 2.6 percent increase in the Local Good Component.

Recreation and Culture Index

The 1.5 percent decrease in the Recreation and Culture index was result in the lower prices recorded for television (LCD) and exercise book.

Food and Non Alcoholic Beverages Index

Lower prices recorded for chicken leg quarter, rice, canned fish, pig trotter, apple, ripe banana and coconut is reflected in the 1.0 percent decrease in the Food and Non Alcoholic Beverages index.

Furnishings, Household Equipment, and Maintenance Index

A decrease of 0.8 percent in the Furnishing, Household, Equipment and Maintenance index was a reflection of the lower prices recorded for washing powder.

Communication Index

The 0.5 percent decrease in the Communication index was a result of the lower prices recorded for prepaid internet.

Health Index

Higher prices recorded for medicine tablet (amoxicillin) is resulted in the 1.4 percent increase in the Health index.

Transport Index

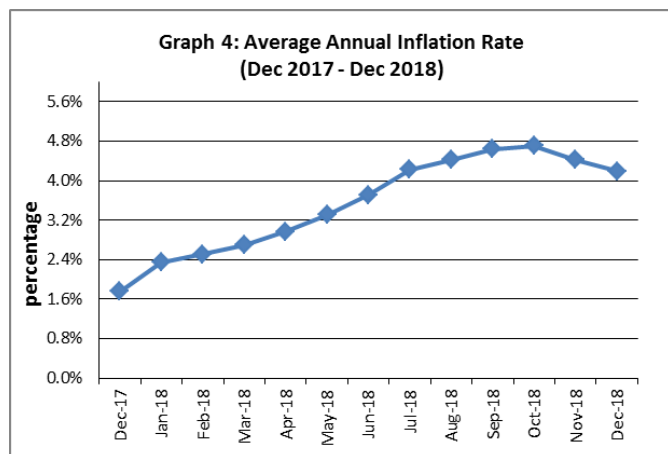
Increased prices recorded for fuel (diesel) and airline fare (Apia-Auckland-Apia) is reflected in the 1.3 percent increase in the Transport index.

Underlying Indices ^{1/}

The All Items Underlying Index for December 2018 registered a decrease of 2.2 percent when compared to November 2018, and a decrease of 3.3 percent when compared to December 2017. The Imported Items Underlying Index registered a decrease of 3.1 percent, while the Local Items Underlying Index also recorded a decrease of 0.2 percent from the previous month.

Inflation Rate

The average annual inflation rate for the year ended December 2018 was 4.2 percent. For the twelve months ending December 2017 the inflation rate was 1.8 percent. Presented in Graph 4 is the average annual inflation rate (December 2017 - December 2018).



Source : Samoa Bureau of Statistics

The attached Tables and Graphs provide the user with more detailed analysis.

Technical Notes:

The Consumer Price (CPI) measures the rate of inflation for Samoa. It is designed to measure the change in prices for the goods purchased by households in Samoa. The CPI measures the change in prices by comparing the prices for a basket of goods and services

at the collection period with the price for the same goods in a base period.

The basket of goods that is priced is based on the average expenditures of households as recorded in the Household Income and Expenditure Survey (HIES). The HIES survey identifies how much households spend on different items. The more households spend on an item on average, the more important it is to the price index, and the higher the weight in the index.

^{1/} *Monthly movements in the 'headline' CPI series can be volatile. This volatility reflects price changes in particular items that may be due, among other factors, to fluctuations in commodity markets and agricultural conditions, policy changes, or seasonal or infrequent price resetting.*

Underlying inflation is a measure of inflation that excludes certain items that face volatile price movements. Underlying inflation eliminates products that can have temporary price shocks because these shocks can diverge from the overall trend of inflation and give a false measure of inflation.

SAMOA BUREAU OF STATISTICS

*Economic Statistics Division
FMFM II Building, Level 1
P O Box 1151
Apia, Samoa*

*Phone: (685) 62014/62015
Fax: (685) 24675
E-mail: info.stats@sbs.gov.ws
Website: www.sbs.gov.ws*

Date of release: 14th January 2019.

The next Consumer Price Index will be released on 11th February 2019.

Mātaao Edith N Taosoga-Faaola
ACTING GOVERNMENT STATISTICIAN

Table 1. CONSUMER PRICE INDEX.

(Base Period : Average Prices February 2016 = 100)

Group	All Items	Food and Non Alcoholic Beverages	Alcoholic Beverages, Tobacco and Narcotics	Clothing and Footwear	Housing, Water, Electricity, Gas and other Fuels	Furnishings, Household Equipment, and Maintenance	Health	Transport	Communication	Recreation and Culture	Education	Restaurants	Miscellaneous goods and services
<i>Weights</i>	1000.0	403.7	128.4	21.2	119.6	30.8	4.6	148.5	51.5	6.1	19.7	22.4	43.5
Ave - 2016	101.1	103.7	102.8	98.8	92.6	99.4	99.2	101.3	100.0	95.4	101.1	99.3	100.6
Ave - 2017	102.9	105.1	107.6	96.6	92.2	99.1	95.6	107.3	101.2	90.7	97.9	98.3	98.1
Ave - 2018	107.2	111.0	112.3	95.3	91.0	98.0	97.0	115.0	103.3	92.6	110.4	99.0	97.8
2017													
December 2018	105.0	108.4	108.7	95.8	92.7	98.3	95.3	110.6	103.4	92.0	97.8	98.6	97.6
January	105.7	108.6	110.3	95.7	93.0	98.3	95.3	113.5	103.4	91.7	97.8	98.6	97.5
February	105.3	108.2	110.6	94.7	90.9	98.6	95.3	111.3	103.4	92.9	111.6	98.6	97.6
March	104.7	106.8	110.9	94.6	89.4	99.0	95.3	112.0	103.4	92.9	111.6	98.6	96.8
April	105.3	107.9	111.1	95.0	90.7	98.8	95.3	111.9	103.4	93.2	111.6	98.6	97.5
May	107.4	112.1	112.5	95.0	89.8	98.4	95.3	113.6	103.4	93.2	111.6	98.6	97.9
June	108.6	115.3	112.1	95.0	88.1	97.3	95.3	115.2	103.4	93.2	111.6	98.6	97.6
July	109.7	116.7	112.0	95.0	89.7	97.6	98.5	117.4	103.4	93.2	111.6	98.6	98.3
August	109.4	115.6	113.2	95.0	92.9	97.2	98.5	114.9	103.4	92.0	111.6	98.6	98.1
September	108.7	113.1	113.6	94.8	93.5	98.2	98.5	116.1	103.4	92.0	111.6	98.6	97.9
October	108.9	112.4	113.8	96.0	95.2	97.9	98.5	117.4	103.4	93.8	111.6	98.6	98.0
November	106.5	108.1	113.6	96.2	89.7	97.6	98.5	117.8	103.4	92.3	111.6	100.6	98.0
December (P)	106.3	107.0	113.6	96.3	89.6	96.8	99.9	119.3	102.9	90.9	111.6	100.6	98.2
<u>Percentage Change (P)</u>													
Dec 2018 over Nov 2018	-0.2%	-0.9%	-0.1%	0.2%	0.0%	-0.8%	1.4%	1.3%	-0.5%	-1.5%	0.0%	0.0%	0.2%
Dec 2018 over Dec 2017	1.2%	-1.2%	4.5%	0.6%	-3.4%	-1.5%	4.8%	7.8%	-0.5%	-1.2%	14.1%	2.0%	0.7%

Source : Samoa Bureau Statistics

(P) : Provisional figures

Note : n.a. Not applicable

Table 2. ALL ITEMS UNDERLYING INDEX

(Base Period : Average Prices February 2016 = 100)

Group	All Items	Food and Non Alcoholic Beverages	Alcoholic Beverages, Tobacco and Narcotics	Clothing and Footwear	Housing, Water, Electricity, Gas and other Fuels	Furnishings, Household Equipment, and Maintenance	Health	Transport	Communication	Recreation and Culture	Education	Restaurants	Miscellaneous goods and services
<i>Weights</i>	586.7	345.3	<i>n.a</i>	21.2	24.2	30.8	3.5	26.4	51.5	5.6	12.3	22.4	43.5
<i>Ave - 2016</i>	101.7	103.2		98.8	97.5	99.4	99.0	100.2		95.0		99.3	100.6
<i>Ave - 2017</i>	104.1	107.9		96.6	93.8	99.1	94.2	104.2	101.2	90.0	96.7	98.3	98.1
<i>Ave - 2018</i>	106.6	110.8		95.3	93.4	98.0	96.0	110.8	103.3	92.0	114.0	99.0	97.8
2017													
December 2018	106.7	111.8		95.8	92.6	98.3	93.8	109.9	103.4	91.4	96.5	98.6	97.6
January	105.4	109.5		95.7	92.5	98.3	93.8	112.3	103.4	91.0	96.5	98.6	97.5
February	105.8	109.3		94.7	94.1	98.6	93.8	112.1	103.4	92.4	115.6	98.6	97.6
March	104.7	107.5		94.6	93.3	99.0	93.8	112.1	103.4	92.4	115.6	98.6	96.8
April	104.6	107.3		95.0	92.9	98.8	93.8	112.5	103.4	92.7	115.6	98.6	97.5
May	106.9	111.1		95.0	93.1	98.4	93.8	112.5	103.4	92.7	115.6	98.6	97.9
June	109.7	116.0		95.0	93.3	97.3	93.8	112.3	103.4	92.7	115.6	98.6	97.6
July	109.2	115.2		95.0	93.2	97.6	98.0	111.3	103.4	92.7	115.6	98.6	98.3
August	108.8	114.7		95.0	92.6	97.2	98.0	111.3	103.4	91.3	115.6	98.6	98.1
September	107.9	113.0		94.8	92.9	98.2	98.0	109.9	103.4	91.4	115.6	98.6	97.9
October	107.7	112.7		96.0	94.0	97.9	98.0	107.7	103.4	93.3	115.6	98.6	98.0
November	105.5	108.8		96.2	94.5	97.6	98.0	107.8	103.4	91.7	115.6	100.6	98.0
December (P)	103.1	105.0		96.3	94.1	96.8	99.8	108.2	102.9	90.2	115.6	100.6	98.2
<u>Percentage Change (P)</u>													
Dec 2018 over Nov 2018	-2.2%	-3.5%		0.2%	-0.5%	-0.8%	1.9%	0.3%	-0.5%	-1.7%	0.0%	0.0%	0.2%
Dec 2018 over Dec 2017	-3.3%	-6.0%		0.6%	1.6%	-1.5%	6.5%	-1.6%	-0.5%	-1.3%	19.7%	2.0%	0.7%

Source : Samoa Bureau Statistics

(P) : Provisional figures

Note : n.a. Not applicable

Table 3. AVERAGE RETAIL PRICES OF SELECTED COMMODITIES

Commodities	Wt	Unit	2017			2018		
			Oct	Nov	Dec	Oct	Nov	Dec (P)
01 Food and non-alcoholic beverages								
Leg Quarters Chicken	62.2	kg	4.51	4.45	4.39	4.50	4.01	3.44
Raw Sugar	21.3	kg	2.95	3.05	2.96	2.68	2.63	2.69
Bread	17.2	loaf	1.69	1.68	1.68	1.68	1.68	1.68
Corned Beef (a)	15.9	12 oz	8.22	8.22	8.22	8.15	8.15	8.15
Taro	15.2	kg	1.78	1.65	1.81	2.66	2.66	3.03
Re-packed medium grain rice	13.4	kg	3.14	3.19	3.20	3.23	3.21	3.23
Prepacked medium grain rice (a)	13.4	907g	3.05	3.05	3.05	3.08	3.08	3.02
Canned fish between \$3.00 and \$3.99 Natural Oil	12.7	15 oz	3.48	3.47	3.50	3.45	3.45	3.50
Bongo	10.2	20grms	0.83	0.83	0.83	0.84	0.82	0.81
Keke Saina Biscuits (a)	9.2	pkt 10	6.40	6.48	6.38	6.50	6.50	6.25
Tip Top Ice Cream (a)	9.2	2 ltr	15.03	15.03	15.07	15.07	15.07	15.32
Ramen maggie	9.0	85gms	1.14	1.14	1.12	1.10	1.10	1.12
Fish (Piece)	7.9	kg	15.86	15.02	14.31	21.92	18.21	25.39
Butter Anchor	7.7	454g	13.59	13.64	13.24	13.46	13.46	13.54
Round Pancake (a)	7.5	sml	0.15	0.15	0.15	0.15	0.15	0.15
Mutton Flaps	6.6	kg	20.27	21.15	20.85	22.01	21.92	22.03
Canned fish \$4:00 or over N/Oil	6.4	15 oz	4.77	4.77	4.83	4.78	4.75	4.85
Canned fish under \$3.00 in N/Oil	6.4	15 oz	2.50	2.52	2.50	2.83	2.78	2.53
Wings Turkey	6.3	kg	6.74	6.88	6.97	6.36	6.15	6.08
Fish (string)	6.0	kg	8.60	7.95	9.01	11.75	9.81	10.94
Fish (large)	6.0	kg	15.83	15.55	15.86	16.28	16.28	18.60
02 Alcoholic beverages, tobacco and narcotics								
Lager Beer	37.9	355 mls	3.43	3.43	3.44	3.55	3.54	3.55
Pall Mall Filter Cigarettes (Red)	24.3	20 rolls	12.20	12.20	12.20	13.00	13.00	13.00
Pall Mall Menthol Cigarettes (Green)	24.3	20 rolls	12.20	12.20	12.20	13.00	13.00	13.00
Beer (a)	16.3	330 mls	3.28	3.31	3.31	3.35	3.35	3.35
Winfield Tobacco (a)	12.6	packet	15.00	15.00	15.00	15.00	15.00	15.00
03 Clothing and footwear								
Uniform le Faitaga College boys	4.3	size 8-10	32.33	32.33	32.33	31.33	31.33	31.33
Uniform Pa'ave (a)	3.7	size 7	32.67	32.67	32.67	34.33	34.67	34.67
04 Housing, water, electricity, gas and other fuels								
Electricity / Cashpower / kw h 1- 100 / total cost per t	50.6	kw h	0.63	0.71	0.67	0.70	0.58	0.58
Reservoir treated Water	28.5	15-40 m3	1.40	1.40	1.40	1.40	1.40	1.40
Liquid gas	15.8	9kg	59.50	59.50	59.50	62.00	62.00	62.00
Government house Rent	12.2	2 b/room	650.00	650.00	650.00	650.00	650.00	650.00
05 Furnishings, household equipment and routine household maintenance								
Washing powder (a)	6.3	200g	1.84	1.84	1.84	1.79	1.79	1.72
Soap yellow Washing soap	5.9	bar	2.81	2.92	2.94	2.85	2.85	2.85
Mosquito coil	4.4	10 coil	1.28	1.28	1.20	1.28	1.28	1.28

06 Health

Amoxicillin mg Tablets (a)	2.5	500 mg	6.83	6.83	6.83	7.53	7.53	7.92
Hospital Charge	1.1	night	22.50	22.50	22.50	22.50	22.50	22.50

07 Transport

Petrol	60.8	1 ltr	2.47	2.53	2.56	2.88	2.97	2.89
Taxi Fare PO Motootua Hosp	8.2	per trip	4.80	4.80	4.80	4.80	4.80	4.80
Taxi Fares PO Malua	8.2	per trip	31.30	31.30	31.30	31.30	31.30	31.30
Taxi Fares PO Falefa	8.2	per trip	43.20	43.20	43.20	43.20	43.20	43.20
Air Fares Fagalii Pago Fagalii	6.8	return trip	380.00	380.00	380.00	395.00	395.00	395.00
Air Fares Apia Auckland Apia	6.8	1 month	1533.83	1380.10	1489.07	1640.47	1271.10	2035.67

08 Communication

Calling per minute Rate cell phone (a)	10.02	per minute	0.45	0.45	0.45	0.45	0.45	0.45
Internet data bundles per mb Rate (a)	10.02	per mb	0.25	0.25	0.25	0.25	0.25	0.25
Calling per minute Rate cell phone (a)	10.02	per minute	0.44	0.44	0.44	0.44	0.44	0.44
Internet data bundles per mb Rate (a)	10.02	per mb	0.20	0.20	0.20	0.20	0.20	0.20

09 Recreation and culture

Television (a)	2.30	LCD	1007.83	1007.83	1007.83	1010.67	1010.67	966.00
Exercise Book w arwick	1.44	1B4 64 pa	1.37	1.37	1.37	1.45	1.37	1.35
Laptop (a)	1.33	each	2808.60	2808.60	2808.60	2878.60	2842.00	2878.60

10 Education

Fees PTA Primary Y Urban Registration fees (a)	7.23	Year 6	62.50	62.50	62.50	82.50	82.50	82.50
Fees PTA Secondary Y Urban Registration fees (a)	5.11	Year 10	50.00	50.00	50.00	52.00	52.00	52.00
Fees Tertiary NUS registration School Fees	3.79	registratio	292.00	292.00	292.00	320.00	320.00	320.00
Fees Secondary Y Examination Fees (a)	3.61	Y12-13	25.50	25.50	25.50	25.50	25.50	25.50

11 Restaurants and hotels

Fish & Chip Meal	7.79	1 serve	9.17	9.17	9.17	9.17	9.17	9.17
Curry & Chopsuey Meal	4.87	1 serve	3.00	3.00	3.00	3.00	3.33	3.33
Chicken & Chips Meal (a)	4.87	1 serve	9.36	9.36	9.36	9.36	9.36	9.36
Steam rice & chicken Meal (a)	4.87	1 serve	4.83	4.83	4.83	4.83	4.83	4.83

12 Miscellaneous goods and services

Paper Sofan deluxe ply Toilet Paper	8.52	250 sheet	0.98	0.98	0.98	1.01	1.01	1.01
Hair Gel	4.59	1124ml	4.84	4.81	4.81	4.34	4.36	4.36
Remains price for Storage of remains (a)	4.41	per day	60.00	60.00	60.00	60.00	60.00	60.00
Basic Casket (a)	4.41	each	1966.67	1966.67	1966.67	1966.67	1966.67	1966.67
Standard Embalming (a)	4.41	1 person	1500.00	1500.00	1500.00	1500.00	1500.00	1500.00
Toilet soap (a)	4.38	90g	1.85	1.83	1.83	1.85	1.85	1.86
Diapers (a)	4.19	5kg-10kg	10.04	10.04	9.94	9.36	9.36	9.21

Source : Samoa Bureau Statistics

(a) : New commodity from February 2016

(P) : Provisional figures

Note : Please note unit of conversion was in pound's (lb's) but been converted into kilograms (kg)

Table 4. IMPORTED GOODS COMPONENT OF THE CONSUMER PRICE INDEX
(Base Period : Average Prices February 2016 = 100)

Group	All Items	Food and Non Alcoholic Beverages	Alcoholic Beverages, Tobacco and Narcotics	Clothing and Footwear	Housing, Water , Electricity, Gas and other Fuels	Furnishings, Household Equipment and Maintenance	Health	Transport	Communication	Recreation and Culture	Education	Restaurants	Miscellaneous goods and services
<i>Weights</i>	494.7	269.1	23.8	15.2	28.3	26.9	2.5	88.6	<i>n.a</i>	5.6	<i>n.a</i>	<i>n.a</i>	34.7
Ave - 2016	102.5	103.9	105.1	98.8	98.7	99.3	98.5	101.8		95.0			100.7
Ave - 2017	107.3	110.1	110.0	97.0	97.6	98.9	91.7	111.2		90.0			97.1
Ave - 2018	111.9	113.8	113.5	96.1	100.6	97.6	94.3	124.0		92.0			96.6
2017													
December 2018	110.9	115.0	110.5	96.5	97.6	98.0	91.1	116.3		91.4			96.4
January	110.3	112.1	110.5	96.9	98.7	98.0	91.1	121.6		91.0			96.3
February	110.0	111.8	110.3	95.5	99.9	98.4	91.1	120.5		92.4			96.4
March	108.8	109.5	110.7	95.4	99.8	98.8	91.1	121.2		92.4			95.4
April	108.4	109.4	110.7	95.5	99.2	98.5	91.1	119.3		92.7			96.3
May	111.6	114.3	114.9	95.6	99.3	98.1	91.1	120.7		92.7			96.8
June	115.5	120.5	115.0	95.6	100.6	96.9	91.1	123.8		92.7			96.5
July	115.6	119.4	115.0	95.5	101.0	97.2	97.1	127.2		92.7			97.2
August	114.7	118.8	115.0	95.5	100.1	96.7	97.1	124.5		91.3			97.1
September	113.9	116.6	115.0	95.5	100.9	97.9	97.1	126.2		91.4			96.8
October	113.8	116.2	115.0	97.0	101.9	97.5	97.1	126.5		93.3			96.9
November	111.7	111.1	115.0	97.2	103.0	97.2	97.1	129.6		91.7			96.9
December (P)	108.6	106.2	115.0	97.6	102.9	96.3	99.8	127.3		90.2			97.2
<u>Percentage Change (P)</u>													
Dec 2018 over Nov 2018	-2.8%	-4.4%	0.0%	0.5%	-0.1%	-1.0%	2.7%	-1.8%		-1.7%			0.3%
Dec 2018 over Dec 2017	-2.1%	-7.6%	4.1%	1.1%	5.5%	-1.7%	9.5%	9.4%		-1.3%			0.8%

Source : Samoa Bureau Statistics

(P) : Provisional figures

Note : n.a. Not applicable

Table 5. IMPORTED ITEMS UNDERLYING INDEX

(Base Period : Average Prices February 2016 = 100)

Group	All Items	Food and Non Alcoholic Beverages	Alcoholic Beverages, Tobacco and Narcotics	Clothing and Footwear	Housing, Water , Electricity, Gas and other Fuels	Furnishings, Household Equipment and Maintenance	Health	Transport	Communication	Recreation and Culture	Education	Restaurants	Miscellaneous goods and services
Weights	401.2	269.1	n.a	15.2	24.2	26.9	2.5	23.0	n.a	5.6	n.a	n.a	34.7
Ave - 2016	102.4	103.9		98.8	97.5	99.3	98.5	100.1		95.0			100.7
Ave - 2017	106.0	110.1		97.0	93.8	98.9	91.7	104.5		90.0			97.1
Ave - 2018	108.8	113.8		96.1	93.4	97.6	94.3	111.2		92.0			96.6
2017													
December 2018	109.5	115.0		96.5	92.6	98.0	91.1	111.1		91.4			96.4
January	107.7	112.1		96.9	92.5	98.0	91.1	113.3		91.0			96.3
February	107.5	111.8		95.5	94.1	98.4	91.1	112.6		92.4			96.4
March	105.9	109.5		95.4	93.3	98.8	91.1	112.6		92.4			95.4
April	105.9	109.4		95.5	92.9	98.5	91.1	113.1		92.7			96.3
May	109.2	114.3		95.6	93.1	98.1	91.1	113.1		92.7			96.8
June	113.2	120.5		95.6	93.3	96.9	91.1	112.9		92.7			96.5
July	112.6	119.4		95.5	93.2	97.2	97.1	111.7		92.7			97.2
August	112.0	118.8		95.5	92.6	96.7	97.1	111.7		91.3			97.1
September	110.6	116.6		95.5	92.9	97.9	97.1	110.1		91.4			96.8
October	110.3	116.2		97.0	94.0	97.5	97.1	107.5		93.3			96.9
November	106.9	111.1		97.2	94.5	97.2	97.1	107.7		91.7			96.9
December (P)	103.6	106.2		97.6	94.1	96.3	99.8	108.1		90.2			97.2
<u>Percentage Change (P)</u>													
Dec 2018 over Nov 2018	-3.1%	-4.4%		0.5%	-0.5%	-1.0%	2.7%	0.4%		-1.7%			0.3%
Dec 2018 over Dec 2017	-5.4%	-7.6%		1.1%	1.6%	-1.7%	9.5%	-2.7%		-1.3%			0.8%

Source : Samoa Bureau Statistics

(P) : Provisional figures

Note : n.a. Not applicable

Table 6. LOCAL GOODS COMPONENT OF THE CONSUMER PRICE INDEX
(Base Period : Average Prices February 2016 = 100)

Group	All Items	Food and Non Alcoholic Beverages	Alcoholic Beverages, Tobacco and Narcotics	Clothing and Footwear	Housing, Water, Electricity, Gas and other Fuels	Furnishings, Household Equipment and Maintenance	Health	Transport	Communication	Recreation and Culture	Education	Restaurants	Miscellaneous goods and services
Weights	505.3	134.6	104.6	6.0	91.3	3.9	2.2	59.9	51.5	0.4	19.7	22.4	8.8
Ave - 2016	99.7	102.5	102.3	98.6	90.7	100.0	100.0	100.5	100.0	100.0	101.1	99.3	
Ave - 2017	98.6	95.0	107.1	95.7	90.6	100.1	100.0	101.6	101.2	100.0	97.9	98.3	102.3
Ave - 2018	102.6	105.3	112.0	93.3	88.1	100.3	100.0	101.7	103.3	100.0	110.4	99.0	102.3
2017													
December 2018	99.2	95.0	108.3	93.8	91.3	100.3	100.0	102.2	103.4	100.0	97.8	98.6	102.3
2018													
January	101.3	101.6	110.3	92.6	91.3	100.3	100.0	101.5	103.4	100.0	97.8	98.6	102.3
February	100.7	101.0	110.7	92.8	88.1	100.3	100.0	97.7	103.4	100.0	111.6	98.6	102.3
March	100.6	101.2	110.9	92.8	86.2	100.3	100.0	98.3	103.4	100.0	111.6	98.6	102.3
April	102.3	104.9	111.1	93.7	88.1	100.3	100.0	100.8	103.4	100.0	111.6	98.6	102.3
May	103.2	107.8	112.0	93.7	86.8	100.3	100.0	103.1	103.4	100.0	111.6	98.6	102.3
June	101.8	104.9	111.4	93.7	84.3	100.3	100.0	102.4	103.4	100.0	111.6	98.6	102.3
July	103.9	111.3	111.3	93.7	86.2	100.3	100.0	102.8	103.4	100.0	111.6	98.6	102.3
August	104.2	109.2	112.8	93.6	90.6	100.3	100.0	100.8	103.4	100.0	111.6	98.6	102.3
September	103.6	106.1	113.3	93.0	91.3	100.3	100.0	101.1	103.4	100.0	111.6	98.6	102.3
October	104.1	104.9	113.5	93.6	93.2	100.3	100.0	104.1	103.4	100.0	111.6	98.6	102.3
November	101.5	101.9	113.3	93.5	85.5	100.3	100.0	100.2	103.4	100.0	111.6	100.6	102.3
December (P)	104.0	108.7	113.2	93.0	85.5	100.3	100.0	107.5	102.9	100.0	111.6	100.6	102.3
<u>Percentage Change (P)</u>													
Dec 2018 over Nov 2018	2.6%	6.7%	-0.1%	-0.6%	0.0%	0.0%	0.0%	7.2%	-0.5%	0.0%	0.0%	0.0%	0.0%
Dec 2018 over Dec 2017	4.9%	14.3%	4.6%	-0.9%	-6.3%	0.0%	0.0%	5.2%	-0.5%	0.0%	14.1%	2.0%	0.0%

Source : Samoa Bureau Statistics

(P) : Provisional figures

Note : n.a. Not applicable

Table 7. LOCAL ITEMS UNDERLYING INDEX

(Base Period : Average Prices February 2016 = 100)

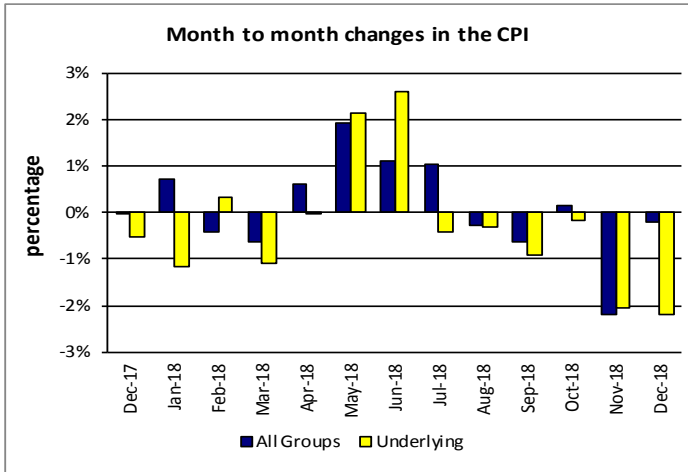
Group	All Items	Food and Non Alcoholic Beverages	Alcoholic Beverages, Tobacco and Narcotics	Clothing and Footwear	Housing, Water, Electricity, Gas and other Fuels	Furnishings, Household Equipment and Maintenance	Health	Transport	Communication	Recreation and Culture	Education	Restaurants	Miscellaneous goods and services
Weights	185.5	76.1	n.a	6.0	n.a	3.9	1.0	3.4	51.5	n.a	12.3	22.4	8.8
Ave - 2016	100.3	100.6		98.6		100.0	100.0	101.0				99.3	
Ave - 2017	99.9	100.1		95.7		100.1	100.0	101.8	101.2		96.7	98.3	102.3
Ave - 2018	101.9	100.3		93.3		100.3	100.0	108.3	103.3		114.0	99.0	102.3
2017													
December 2018	100.5	100.1		93.8		100.3	100.0	101.8	103.4		96.5	98.6	102.3
January	100.6	100.2		92.6		100.3	100.0	105.7	103.4		96.5	98.6	102.3
February	102.0	100.4		92.8		100.3	100.0	108.6	103.4		115.6	98.6	102.3
March	102.0	100.3		92.8		100.3	100.0	108.6	103.4		115.6	98.6	102.3
April	101.9	100.0		93.7		100.3	100.0	108.6	103.4		115.6	98.6	102.3
May	101.8	99.8		93.7		100.3	100.0	108.6	103.4		115.6	98.6	102.3
June	102.0	100.2		93.7		100.3	100.0	108.6	103.4		115.6	98.6	102.3
July	101.9	100.0		93.7		100.3	100.0	108.6	103.4		115.6	98.6	102.3
August	101.9	100.2		93.6		100.3	100.0	108.6	103.4		115.6	98.6	102.3
September	102.0	100.3		93.0		100.3	100.0	108.6	103.4		115.6	98.6	102.3
October	102.0	100.4		93.6		100.3	100.0	108.6	103.4		115.6	98.6	102.3
November	102.4	100.7		93.5		100.3	100.0	108.6	103.4		115.6	100.6	102.3
December (P)	102.2	100.7		93.0		100.3	100.0	108.6	102.9		115.6	100.6	102.3
<u>Percentage Change (P)</u>													
Dec 2018 over Nov 2018	-0.2%	0.0%		-0.6%		0.0%	0.0%	0.0%	-0.5%		0.0%	0.0%	0.0%
Dec 2018 over Dec 2017	1.7%	0.5%		-0.9%		0.0%	0.0%	6.7%	-0.5%		19.7%	2.0%	0.0%

Source : Samoa Bureau Statistics

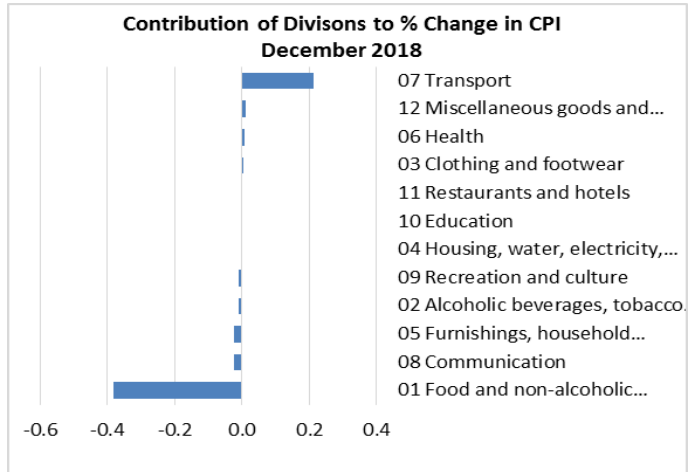
(P) : Provisional figures

Note : n.a. Not applicable

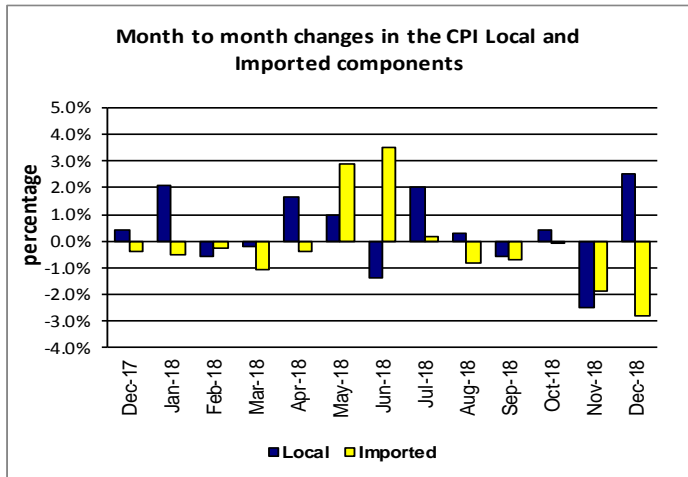
Graph.5



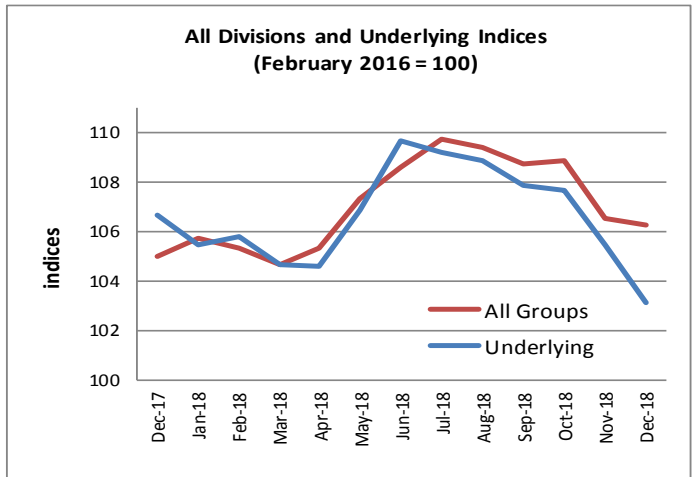
Graph.6



Graph.7



Graph.8



Graph.9

