

Please address all correspondence
To Government Statistician
In reply, please quote the file reference



File Ref: Issue 21

GOVERNMENT OF SAMOA

SAMOA BUREAU OF STATISTICS

IMPORT PRICE INDEX – DECEMBER 2015 QUARTER (Base Period: March 2009 quarter = 100.0)

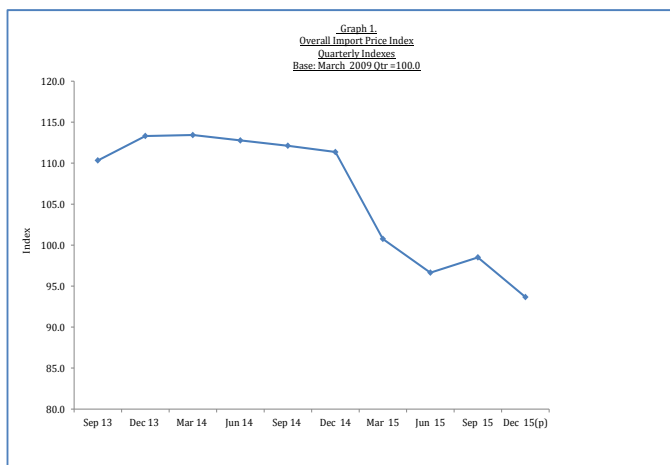
Highlights of the quarter

- Import price index fell 4.9 percent from the September 2015 quarter.
- Mineral Products prices recorded the largest decrease (down 14.9 percent).

Overview

The import price index for the December 2015 quarter showed an overall decrease of 4.9 percent from the September 2015 quarter. In comparison with the December 2014 quarter, the current import price index fell 15.9 percent.

The four quarters ending December 2015 decreased 13.3 percent in the overall import price index compared to the four quarters ending December 2014. See table 1 and graph 1.



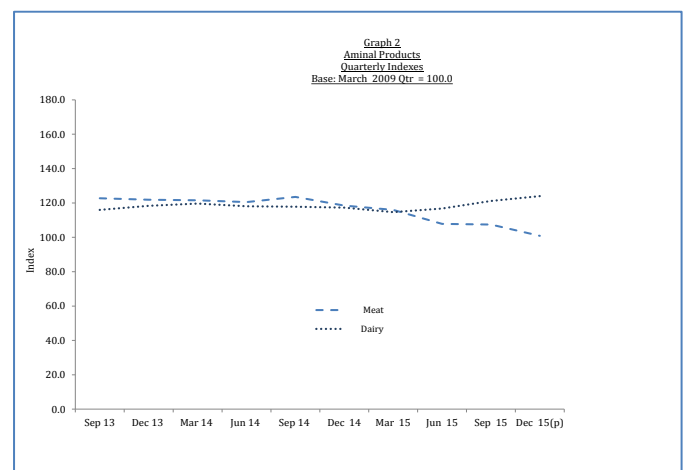
Source: Samoa Bureau of Statistics

HS Section 1: Live Animals; Animal Products prices fall 3.5%.

Import prices for live animals and animal products prices fell 3.5 percent in the December 2015 quarter, following a 0.9 percent rise in the

September 2015 quarter. The decrease was led by a 6.1 percent decrease in meat products prices reflecting lower prices of chicken meats (down 10.5 percent) and sheep meats (down 2.1 percent) and partly offset by a 2.3 percent increase in dairy products prices. In comparison with the December 2014 quarter, the current live animals and animal products index decreased 9.0 percent.

Reviewing the four quarters ending December 2015 over the four quarters ending December 2014, the current overall animals and animal products index decreased 7.5 percent. See tables 1 & 2 and graph 2.



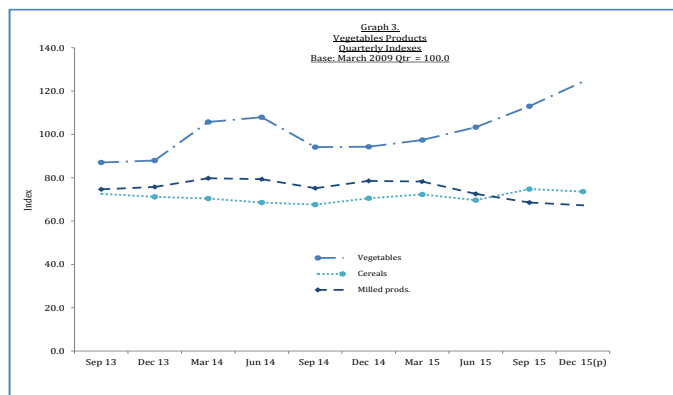
Source: Samoa Bureau of Statistics

HS Section 2: Vegetable Products prices rise 1.2%.

Import prices for vegetable products rose 1.2 percent in the December 2015 quarter, following a 1.6 percent rise in the September 2015 quarter. The current rise was driven by higher prices of vegetables (up 10.1 percent) reflecting higher prices of onions and potatoes and partly offset by lower prices of milled products (down

1.9 percent) and cereals (down 1.6 percent). When compared to the corresponding quarter of 2014, the current vegetables products index increased 0.4 percent.

Reviewing the four quarters ending December 2015 over the four quarters ending December 2014, the current overall vegetable products index decreased 1.0 percent. See tables 1 & 2 and graph 3.

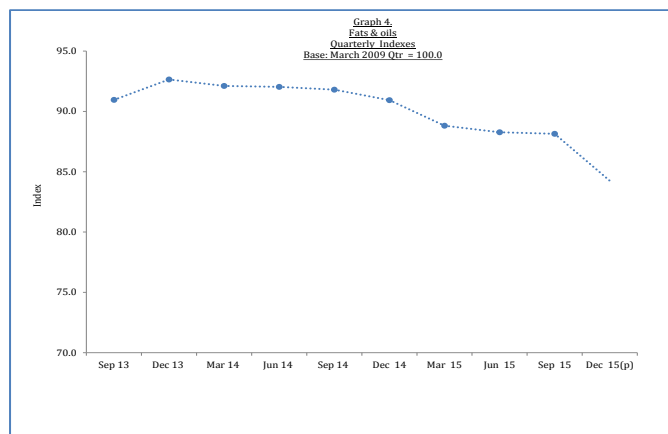


Source: Samoa Bureau of Statistics

HS Section 3: Animal or Vegetable fats & oils prices fall 4.4%.

Import prices for animal or vegetable fats and oils fell 4.4 percent in the December 2015 quarter, following a 0.1 percent fall in the September 2015 quarter. The December 2015 quarter decline was influenced by lower prices of hydrogenated oils (down 6.8 percent) and margarine (down 6.1 percent). When compared to the December 2014 quarter, the current animal or vegetable fats and oils index decreased 7.4 percent.

The four quarters ending December 2015 showed a decrease of 4.7 percent in the overall index for animal or vegetable fats and oils over the four quarters ending December 2014. See tables 1 & 2 and graph 4.

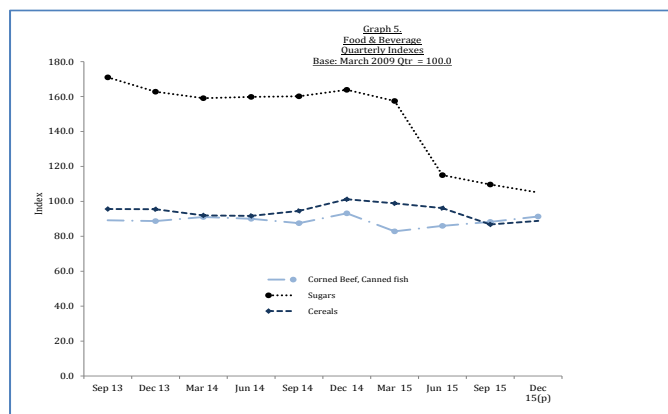


Source: Samoa Bureau of Statistics

HS Section 4: Food and Beverages prices rise 1.0%.

Food and Beverages imports prices rise 1.0 percent in the December 2015 quarter, following a 3.4 percent fall in the September 2015 quarter. Mainly responsible for the current rise were higher prices of canned fish (up 6.5 percent) and pasta (up 4.7 percent). In comparison with the December 2014 quarter, the current food and beverages index decreased 16.8 percent.

In comparing the four quarters ending December 2015 over the four quarters ending December 2014, the overall food and beverages index decreased 10.6 percent. See tables 1 & 2 and graph 5.



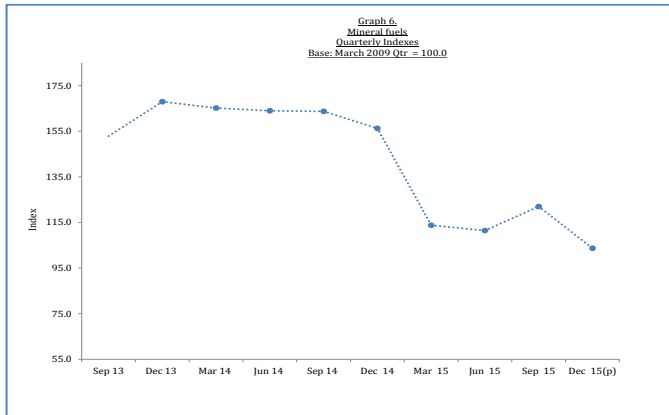
Source: Samoa Bureau of Statistics

HS Section 5: Mineral Products price fall 14.9%.

Import mineral product prices fell 14.9 percent in the December 2015 quarter, after rising 9.4 percent in the September 2015 quarter. In comparison with the December 2014 quarter, the current mineral products index decreased 33.6 percent.

The overall mineral products index in the four quarters ending December 2015 was 30.5

percent lower than the four quarters ending December 2014. See tables 1 & 2 and graph 6.



Source: Samoa Bureau of Statistics

The attached tables provide the user with more detailed information

The March 2016 quarter MPI report is expected to be available on May 2nd 2016.

Muagututi'a S Reupena
Government Statistician

Technical Notes

The Import Price Index (MPI) measures changes in the cost, insurance, and freight (CIF) prices of imports of merchandise into Samoa. It is a fixed weight index with March 2009 quarter = 100.0 and is calculated on a quarterly basis using the International Harmonized System of Trade Classification (HS). The items included in the index were selected on the basis of their importance to the total import.

The scope of the MPI relates to the following sections of the International Harmonized System of Trade Classification (HS): 1. Live Animals: Animal Products, 2. Vegetable Products, 3. Animal or Vegetable fats and oils, 4. Food and Beverages and 5. Mineral Products, The index represents 50 percent of total Imports.

IMPORT PRICE INDEX

Base: March 2009 Quarter = 100.0

Table 1

CODE	DESCRIPTION	Weight	2014				2015				% Change			
			Sep 13	Dec 13	Mar 14	Jun 14	Sep 14	Dec 14	Mar 15	Jun 15	Sep 15	Dec 15(p)	Dec - 15 / Sep - 15	Dec-15 / Dec- 14
I	ANIMAL PRODUCTS	100	120.8	120.9	121.0	119.8	121.9	118.1	115.6	110.4	111.4	107.5	-3.5	-9.0
2	Meat	71.2	122.8	121.9	121.5	120.5	123.5	118.5	116.0	107.8	107.5	100.9	-6.1	-14.9
4	Dairy	28.8	116.0	118.4	119.7	118.1	117.8	117.3	114.7	116.7	121.2	124.0	2.3	5.7
II.	VEGETABLE PRODUCTS	100	76.1	76.4	81.2	80.8	76.0	78.7	79.6	76.9	78.1	79.0	1.2	0.4
7	Vegetables	17.0	87.1	88.0	105.7	107.9	94.2	94.3	97.4	103.3	113.0	124.4	10.1	31.9
10	Cereals	31.7	72.6	71.2	70.4	68.6	67.6	70.6	72.3	69.7	74.8	73.6	-1.6	4.3
11	Milled prods.	51.3	74.6	75.7	79.8	79.3	75.2	78.6	78.3	72.5	68.6	67.3	-1.9	-14.4
III.	FATS & OILS	100	91.0	92.7	92.1	92.0	91.8	90.9	88.8	88.3	88.1	84.3	-4.4	-7.4
15	Fats & oils	100.0	91.0	92.7	92.1	92.0	91.8	90.9	88.8	88.3	88.1	84.3	-4.4	-7.4
IV.	FOOD & BEVERAGE	100	110.9	108.7	107.7	107.3	107.2	112.8	106.0	96.3	92.9	93.8	1.0	-16.8
16	Corned Beef, Canned fish	43.6	89.2	88.7	91.1	90.0	87.5	93.2	82.9	86.0	88.3	91.3	3.5	-2.0
17	Sugars	24.0	171.0	162.8	159.1	159.8	160.2	163.9	157.4	115.0	109.7	105.1	-4.1	-35.8
19	Cereals	32.4	95.6	95.5	92.0	91.7	94.6	101.3	98.9	96.1	86.8	88.9	2.3	-12.3
V.	MINERAL PRODUCTS	100	152.9	168.0	165.1	163.9	163.7	156.2	113.8	111.4	121.9	103.7	-14.9	-33.6
27	Mineral fuels	100	152.9	168.0	165.1	163.9	163.7	156.2	113.8	111.4	121.9	103.7	-14.9	-33.6
Total, All groups		500	110.3	113.3	113.4	112.8	112.1	111.4	100.8	96.6	98.5	93.7	-4.9	-15.9

Source: Samoa Bureau Statistics (Economics Division)

(P) Provisional figures

IMPORT PRICE INDEX
Base: March 2009 Quarter = 100.0

Table 2

	Weight	2013		2014				2015				%Change
		Sep 2013	Dec 2013	Mar 2014	Jun 2014	Sep 2014	Dec 2014	Mar 2015	Jun 2015	Sep 2015	Dec 2015	Dec 15/Sep 15
I. ANIMAL PRODUCTS												
02 Meat	100.0	122.8	121.9	121.5	120.5	123.5	118.5	116.0	107.8	107.5	100.9	-6.1
0204 Sheep	33.7	184.4	183.3	186.0	192.8	190.6	183.6	176.6	167.3	165.8	162.4	-2.1
0207 Poultry	66.3	91.4	90.7	88.7	83.8	89.5	85.4	85.1	77.6	77.8	69.6	-10.5
04 Dairy	100.0	116.0	118.4	119.7	118.1	117.8	117.3	114.7	116.7	121.2	124.0	2.3
0401 Milk	42.0	118.0	120.6	116.4	115.0	117.8	116.3	113.8	116.9	109.7	109.8	0.1
0402 Milk, conc.	17.9	121.2	127.1	137.8	138.5	143.1	137.2	135.4	137.1	129.4	132.9	2.7
0405 Butter	24.1	90.7	91.7	97.0	93.8	84.1	85.3	83.5	86.1	79.7	85.5	7.3
0407 Eggs	16.0	143.0	142.9	142.2	140.0	140.3	145.6	140.9	139.7	204.6	209.3	2.3
II. VEGETABLE PRODUCTS												
07 Vegetables	100.0	87.1	88.0	105.7	107.9	94.2	94.3	97.4	103.3	113.0	124.4	10.1
0701 Potatoes	56.5	101.5	102.7	110.9	111.4	104.7	99.7	101.6	130.4	121.4	127.2	4.8
0703 Onions	43.5	68.3	68.8	99.1	103.4	80.4	87.3	91.9	68.2	102.1	120.8	18.2
10 Cereals	100.0	72.6	71.2	70.4	68.6	67.6	70.6	72.3	69.7	74.8	73.6	-1.6
1006 Rice	100.0	72.6	71.2	70.4	68.6	67.6	70.6	72.3	69.7	74.8	73.6	-1.6
11 Milled prods.	100.0	74.6	75.7	79.8	79.3	75.2	78.6	78.3	72.5	68.6	67.3	-1.9
1101 Wheat	100.0	74.6	75.7	79.8	79.3	75.2	78.6	78.3	72.5	68.6	67.3	-1.9
III. FATS & OILS												
15 Fats & oils	100.0	91.0	92.7	92.1	92.0	91.8	90.9	88.8	88.3	88.1	84.3	-4.4
1507 Soya-bean	27.7	100.0	100.0	100.0	100.0	100.0	100.0	100.0	100.0	100.0	100.0	0.0
1516 Hydrogenated	36.7	81.6	80.4	82.3	80.1	79.3	81.4	78.1	73.8	74.8	69.6	-6.8
1517 Margarine	35.7	93.5	99.6	96.1	98.1	98.3	93.7	91.2	94.0	92.7	87.0	-6.1
IV. FOOD, BEVERAGES& TOBACCO												
16 Meat, fish	100.0	89.2	88.7	91.1	90.0	87.5	93.2	82.9	86.0	88.3	91.3	3.5
1602 Corned Beef	31.0	102.2	104.1	105.3	105.3	100.2	102.1	102.8	104.4	103.3	101.4	-1.9
1604 Canned fish	69.0	83.3	81.9	84.7	83.2	81.8	89.2	73.9	77.7	81.5	86.8	6.5
17 Sugars	100.0	171.0	162.8	159.1	159.8	160.2	163.9	157.4	115.0	109.7	105.1	-4.1
1701 Cane, beet	100.0	171.0	162.8	159.1	159.8	160.2	163.9	157.4	115.0	109.7	105.1	-4.1
19 Cereals	100.0	95.6	95.5	92.0	91.7	94.6	101.3	98.9	96.1	86.8	88.9	2.3
1902 Pasta	56.0	100.7	100.1	95.6	95.5	100.7	108.9	105.5	104.7	86.4	90.5	4.7
1905 Bread	44.0	89.2	89.7	87.4	86.9	86.7	91.5	90.5	85.3	87.3	86.7	-0.7
V. MINERAL PRODUCTS												
27 Mineral fuels	100.0	152.9	168.0	165.1	163.9	163.7	156.2	113.8	111.4	121.9	103.7	-14.9
2710 Petroleum oils	100.0	152.9	168.0	165.1	163.9	163.7	156.2	113.8	111.4	121.9	103.7	-14.9

Source: Samoa Bureau Statistics (Economics Division)

(P) Provisional figures