

SAMOA BUREAU OF STATISTICS

CONSUMER PRICE INDEX JANUARY 2024

Key findings:

The Consumer Price Index for January 2024 increased by 4.1 percent compared to the same month of the previous year.

- The Food and Non-Alcoholic Beverages index increased by 8.4 percent.
- The Furnishings Household Equipment and Maintenance index increased 6.5 percent.
- The Health index increased by 5.4 percent.

The Average Annual Inflation for the year ended January 2024 was 7.3 percent.

The CPI rose 1.1 percent from December 2023.

SUMMARY

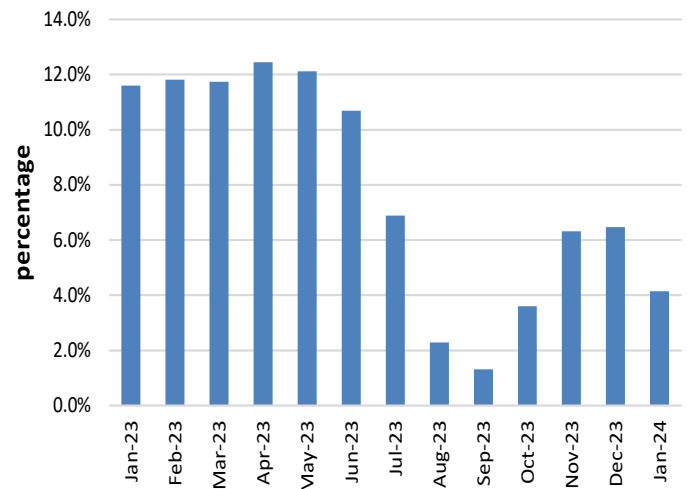
The Consumer Price Index (CPI) for January 2024 rose 4.1 percent compared to January 2023. This was mainly influenced by higher prices for food items, household furnishing and medicine.

When compared to the previous month, the CPI went up by 1.1 percent. Graph 1 shows the percentage changes over the same month of the previous year in the CPI by all Divisions from January 2023 to January 2024.

The Local goods component rose 4.3 percent when compared to the same month last year due to the increase in prices for local food such as taro, coconut, ripe banana, tomato and cucumber.

The Imported goods component also increased 4.0 percent mainly due to higher prices recorded for chicken leg quarters, sugar, onion, rice and coke.

Graph 1: Current month over same month previous year, percentage change in the CPI by All Items (Jan 2024 - Jan 2023)



Source: Samoa Bureau of Statistics

Total All Divisions Contribution

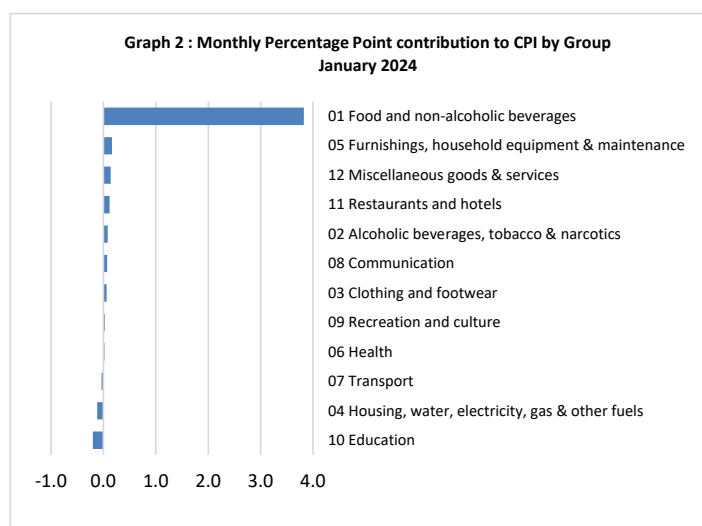
As shown in Graph 2, Food & Non-Alcoholic Beverages was the largest contributor to the 4.1 percent rise in the CPI in January 2024, with a contribution of 3.8 percentage points to the overall increase in January 2024. The most significant drivers of this within the group were chicken leg quarter (up 18.2%), sugar (up to 13.2%), rice prepacked (up 15.8%), onion (up 15.9%), chocolate cake (up 17.4%), coke (up 22.5%), local coffee (up 15.7%), ripe banana (up to 25.5%), cucumber (up 16.1%), tomato (up 24.8%), coconut (up 20.0%) and taro (up 25.1%).

Furnishings, household equipment & maintenance were the next largest contributor with a contribution of 0.2 percentage point, increasing 6.5 percent compared to January 2023. This was mainly influenced by the increases in prices of single mattress (up 47.7%) and clothing chest (up 26.6%).

Miscellaneous goods and services contributed 0.1 percentage-point, increasing 3.8 percent compared to January 2023. This was influenced mainly by the increases in prices of toilet soap (up 14.9%) and standard embalming (up 11.7%).

Restaurants and hotels also contributed 0.1 percentage-point to the rise in CPI due to the increases in prices of chicken and chips meal (up 11.8%), curry & chop suey meal (up 6.7%) and steam rice and chicken meal (up 5.0%).

Alcoholic beverages, tobacco and narcotics contributed 0.1 percentage-point, increasing 0.6 percent when compared with January 2023 as the result of the increase in price of beer (up 16.8%).



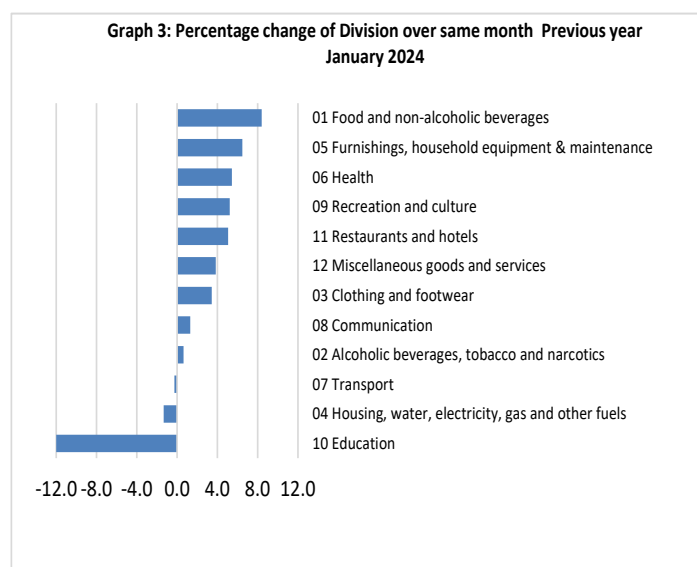
Source : Samoa Bureau of Statistics

Consumer Price Index (% Change)

Graph 3 shows the percentage change for all Divisions (groups) in January 2024 in comparison to January 2023. Food and Non-Alcoholic Beverages had the largest increase of 8.4%. Furnishings, household equipment & maintenance rose 6.5% followed by Health which rose 5.4% percent. Recreation & Culture and Restaurants both increased by 5.2 and 5.1 percent respectively.

Other groups such as Miscellaneous, Clothing & Footwear, Communication and Alcoholic beverages, Tobacco & narcotics indices recorded increases of 3.8, 3.4, 1.3 and 0.6 percent respectively.

On the other hand, Education, Housing, water, electricity, gas & other fuels and Transport declined 12.0, 1.3 and 0.3 percent in that order.



Source : Samoa Bureau of Statistics

Imported Goods Component

The Imported goods component of the CPI registered an increase of 4.0 percent when compared to the same month last year. This rise was mainly due to higher prices recorded for chicken leg quarters, sugar, onion, milk and coke.

Local Goods Component

The increase in prices for taro, coconut, ripe banana, tomato and meals have resulted in the 4.3 percent increase in the local goods component.

Changes by Division / Group

Food and Non-Alcoholic Beverages Index

The increase of 8.4 percent in the Food & Non-Alcoholic Beverages index was influenced by higher prices recorded for chicken leg quarter (up 18.2%), sugar (up to 13.2%), rice prepacked (up 15.8%), onion (up 15.9%), chocolate cake (up 17.4%), coke (up 22.5%), local coffee (up 15.7%), ripe banana (up to 25.5%), cucumber (up 16.1%), tomato (up 24.8%), coconut (up 20.0%) and taro (up 25.1%).

Furnishings, Household Equipment & Maintenance Index

The Furnishings, Household Equipment & Maintenance index rose 6.5 percent due to the increase in prices for single mattress (up 47.4%), clothing chest (26.7%), Eveready AA size batteries (up 15.4%) and kerosene stove (up to 15.3%).

Health Index

The 5.4 percent decrease in the Health Index was influenced by higher prices recorded for medicine (amoxicillin tablets) which went up 4.6%.

Recreation and Culture Index

The Recreation and Culture index went up 5.2 percent due to the increase in the prices for exercise book (up 17.0%) and newspaper (up 10.0%).

Restaurants Index

The Restaurants index recorded an increase of 5.1 percent due to the rise in prices for chicken and chips meal (up 11.8%), curry & chopsuey meal (up 6.7%) and steamed rice & chicken meal (up 5.0%).

Miscellaneous Goods and Services Index

The 3.8 percent rise in the Miscellaneous Goods & Services index was due to higher prices recorded for toilet soap (up 14.9%), embalming services (up 11.7%), and storage of remains (up 11.1%).

Clothing and Footwear Index

The 3.4 percent increase in the Clothing and Footwear index was a result of the 12.9% increase in the prices for Tunic (Paave) uniform.

Communication Index

The rise in price for mobile phone calling per minute (up 7.3%) was the major contributor to the 1.3 percent increase in the Communication index.

Alcoholic Beverages and Tobacco Index

The increase in prices for beer, kava and whisky contributed primarily to the 0.6 percent increase in the Alcoholic Beverages and Tobacco index.

Education

The 12.0 percent decrease in the Education index was a result of lower prices recorded for NUS registration fees (down 62.1%).

Housing, Water, Electricity, Gas and other Fuels Index

The decline in prices for cement and kerosene has led to a 1.3 percent decrease in the Housing, Water, Electricity, Gas, and other Fuels index.

Transport

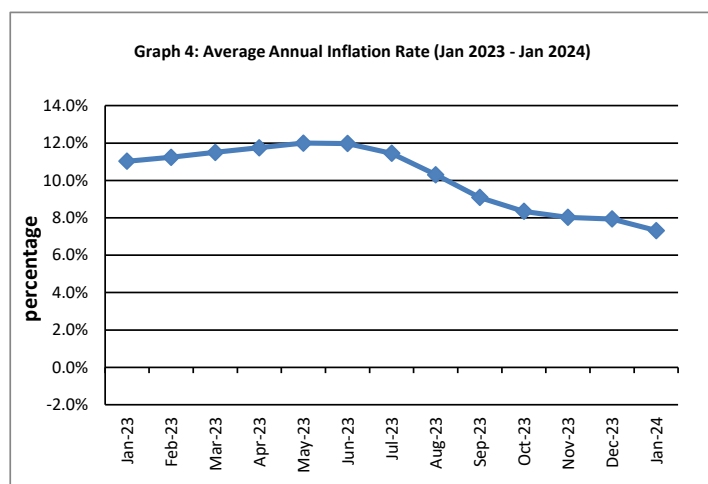
The decreases in the prices of petrol are reflected in the 0.3 percent decrease in the Transport Index.

Underlying Indices ^{1/}

The All Items Underlying Index for January 2024 registered an increase of 6.2 percent when compared to January 2023. It also increased 1.4 percent when compared to December 2023. Both the Imported and Local Items Underlying Indices recorded increases of 7.2 and 4.0 percent respectively.

Annual Inflation Rate

The average annual inflation rate for the year ended January 2024 was 7.3 percent. For the twelve months ending January 2023, the inflation rate was 11.0 percent. Presented in Graph 4 is the average annual inflation rate (Dec 2022-Dec 2023).



Source : Samoa Bureau of Statistics

The attached Tables and Graphs provide the user with a more detailed analysis.

Technical Notes:

The Consumer Price (CPI) measures the rate of inflation for Samoa. It is designed to measure the change in prices for the goods purchased by households in Samoa. The CPI measures the change in prices by comparing the prices for a basket of goods and services at the collection period with the price for the same goods in a base period.

The basket of goods that is priced is based on the average expenditures of households as recorded in the Household Income and Expenditure Survey (HIES). The HIES survey identifies how much households spend on different items. The more households spend on an item on average, the more important it is to the price index, and the higher the weight in the index.

^{1/} Monthly movements in the 'headline' CPI series can be volatile. This volatility reflects price changes in particular items that may be due, among other factors, to fluctuations in commodity markets and agricultural conditions, policy changes, or seasonal or infrequent price resetting.

Underlying inflation is a measure of inflation that excludes certain items that face volatile price movements. Underlying inflation eliminates products that can have temporary price shocks because these shocks can diverge from the overall trend of inflation and give a false measure of inflation.

SAMOA BUREAU OF STATISTICS

*Economic Statistics Division
FMFM II Building, Level 1
P O Box 1151
Apia, Samoa*

Phone: (685) 62014/62015

Fax: (685) 24675

E-mail: info.stats@sbs.gov.ws

Website: www.sbs.gov.ws

Date of release: 15th January 2024

The next Consumer Price Index will be released on 14th March 2024.

Table 1. CONSUMER PRICE INDEX.

(Base Period : Average Prices February 2016 = 100)

Group	All Items	Food and Non Alcoholic Beverages	Alcoholic Beverages, Tobacco and Narcotics	Clothing and Footwear	Housing, Water, Electricity, Gas and other Fuels	Furnishings, Household Equipment, and Maintenance	Health	Transport	Communication	Recreation and Culture	Education	Restaurants	Miscellaneous goods and services
<i>Weights</i>	1000.0	403.7	128.4	21.2	119.6	30.8	4.6	148.5	51.5	6.1	19.7	22.4	43.5
<i>Ave - 2020</i>	106.6	110.4	120.0	93.5	89.6	98.1	99.2	104.4	104.2	88.5	114.9	109.4	98.8
<i>Ave - 2021</i>	109.9	114.1	121.6	98.9	92.4	98.9	105.7	111.7	107.1	88.2	109.9	111.2	97.2
<i>Ave - 2022</i>	122.0	131.8	122.8	108.3	93.1	105.0	101.9	131.0	124.5	91.0	109.4	126.2	102.1
<i>Ave - 2023</i>	123.1	133.6	123.0	108.4	93.5	105.5	101.3	132.0	125.8	91.4	109.4	127.6	102.9
<i>2023</i>													
January	128.2	144.5	123.6	107.6	94.4	106.1	100.0	131.1	132.0	93.3	109.4	135.1	106.9
February	129.0	149.5	123.9	107.3	93.7	106.8	100.0	124.8	132.0	93.3	96.3	135.1	107.2
March	129.8	149.0	125.5	109.9	94.2	106.4	97.6	128.0	132.0	93.3	96.3	140.1	110.9
April	131.8	154.0	123.7	110.6	94.1	106.5	97.6	129.2	132.0	95.6	96.3	140.1	111.1
May	131.5	152.3	123.8	110.8	93.4	106.7	97.6	132.2	132.0	92.3	96.3	140.1	111.8
June	133.9	157.3	122.4	111.0	96.0	106.8	98.3	134.0	132.0	92.3	96.3	140.1	111.5
July	134.0	159.5	123.2	111.0	93.0	108.8	98.3	129.1	132.0	91.2	96.3	140.1	113.3
August	132.8	156.8	123.2	110.9	92.8	108.6	96.0	128.8	132.0	90.7	96.3	141.9	113.0
September	131.8	153.2	123.6	111.3	93.1	109.8	97.1	130.5	132.0	91.8	96.3	141.9	113.1
October	132.3	152.4	124.3	111.4	93.9	109.9	99.3	135.3	132.0	92.2	96.3	141.9	112.2
November	132.4	151.1	124.4	111.3	94.8	110.9	99.3	138.4	132.0	94.5	96.3	141.9	112.1
December	132.0	153.2	124.2	111.3	93.4	111.4	99.3	131.5	132.0	92.8	96.3	141.9	111.5
<i>2024</i>													
January (P)	133.5	156.6	124.4	111.4	93.2	113.0	105.5	130.8	133.7	98.2	96.3	141.9	111.0
<u>Percentage Change (P)</u>													
Jan 2024 over Jan 2023	4.1%	8.4%	0.6%	3.4%	-1.3%	6.5%	5.4%	-0.3%	1.3%	5.2%	-12.0%	5.1%	3.8%
Jan 2024 over Dec 2023	1.1%	2.2%	0.2%	0.1%	-0.2%	1.4%	6.3%	-0.5%	1.3%	5.8%	0.0%	0.0%	-0.5%

Source : Samoa Bureau Statistics

(P) : Provisional figures

Table 2. ALL ITEMS UNDERLYING INDEX

(Base Period : Average Prices February 2016 = 100)

Group	All Items	Food and Non Alcoholic Beverages	Alcoholic Beverages, Tobacco and Narcotics	Clothing and Footwear	Housing, Water, Electricity, Gas and other Fuels	Furnishings, Household Equipment, and Maintenance	Health	Transport	Communication	Recreation and Culture	Education	Restaurants	Miscellaneous goods and services
<i>Weights</i>	586.7	345.3	<i>n.a</i>	21.2	24.2	30.8	3.5	26.4	51.5	5.6	12.3	22.4	43.5
<i>Ave - 2020</i>	106.6	109.9		93.5	93.7	98.1	98.9	110.1	104.2	87.6	120.6	109.4	98.8
<i>Ave - 2021</i>	110.1	114.8		98.9	94.5	98.9	107.5	113.6	107.1	87.3	112.7	111.2	97.2
<i>Ave - 2022</i>	122.9	130.1		108.3	110.2	105.0	102.5	115.5	124.5	90.4	111.9	126.2	102.1
<i>Ave - 2023</i>	124.1	131.7		108.4	110.9	105.5	101.7	115.8	125.8	90.7	111.9	127.6	102.9
<i>2023</i>													
<i>January</i>	130.5	140.3		107.6	112.9	106.1	100.1	117.4	132.0	92.8	111.9	135.1	106.9
<i>February</i>	134.4	146.8		107.3	112.9	106.8	100.1	117.4	132.0	92.8	111.9	135.1	107.2
<i>March</i>	134.5	146.0		109.9	114.3	106.4	96.9	117.7	132.0	92.8	111.9	140.1	110.9
<i>April</i>	135.0	146.7		110.6	114.2	106.5	96.9	119.2	132.0	95.3	111.9	140.1	111.1
<i>May</i>	135.2	146.5		110.8	113.9	106.7	96.9	124.3	132.0	91.7	111.9	140.1	111.8
<i>June</i>	137.7	150.0		111.0	125.8	106.8	97.7	124.3	132.0	91.7	111.9	140.1	111.5
<i>July</i>	138.2	151.1		111.0	111.3	108.8	97.7	130.1	132.0	90.6	111.9	140.1	113.3
<i>August</i>	136.7	148.6		110.9	111.2	108.6	94.6	130.1	132.0	90.0	111.9	141.9	113.0
<i>September</i>	135.5	146.4		111.3	111.2	109.8	96.1	129.3	132.0	91.2	111.9	141.9	113.1
<i>October</i>	135.8	147.0		111.4	111.0	109.9	99.0	129.3	132.0	91.6	111.9	141.9	112.2
<i>November</i>	135.1	145.5		111.3	110.3	110.9	99.0	131.0	132.0	94.1	111.9	141.9	112.1
<i>December</i>	136.7	148.3		111.3	110.4	111.4	99.0	130.9	132.0	92.2	111.9	141.9	111.5
<i>2024</i>													
<i>January (P)</i>	138.6	151.1		111.4	110.3	113.0	107.3	130.9	133.7	98.0	111.9	141.9	111.0
<u>Percentage Change (P)</u>													
<i>Jan 2024 over Jan 2023</i>	6.2%	7.7%		3.4%	-2.3%	6.5%	7.2%	11.6%	1.3%	5.6%	0.0%	5.1%	3.8%
<i>Jan 2024 over Dec 2023</i>	1.4%	1.9%		0.1%	-0.1%	1.4%	8.3%	0.0%	1.3%	6.3%	0.0%	0.0%	-0.5%

Source : Samoa Bureau Statistics

(P) : Provisional figures

Note : n.a. Not applicable

Table 3. AVERAGE RETAIL PRICES OF SELECTED COMMODITIES

Commodities	Wt	Unit	2023			2024			Jan-24	
			Nov	Dec	Jan	Nov	Dec	Jan	% chng from prev mnth	%chng from Jan 23
01 Food and non-alcoholic beverages										
Chicken leg quarters	62.19	kg	5.16	4.57	5.78	6.01	6.40	6.83	6.8%	18.2%
Raw Sugar	21.27	kg	3.68	3.42	3.60	4.05	4.07	4.07	0.0%	13.2%
Bread	17.20	loaf	1.82	1.86	1.84	1.99	1.97	1.97	0.0%	7.1%
Corned Beef Oxford (a)	15.88	340 grms	10.13	10.13	10.13	10.98	10.98	10.98	0.0%	8.4%
Taro	15.17	kg	3.57	3.78	3.68	5.38	4.84	4.61	-4.8%	25.1%
Re-packed medium grain rice	13.38	kg	3.60	3.55	3.51	3.80	3.99	3.95	-1.0%	12.5%
Prepacked medium grain rice (a)	13.38	907 grms	2.87	2.87	2.95	3.38	3.42	3.42	0.0%	15.8%
Bongo	10.18	20 grms	0.92	0.87	0.87	0.92	0.92	0.92	0.0%	5.7%
Keke Saina Biscuits (a)	9.21	pkt 10	7.18	7.04	7.21	7.75	7.53	7.53	0.0%	4.5%
Ice Cream (a)	9.17	2 ltr	18.90	18.98	19.25	19.67	19.73	19.73	0.0%	2.5%
Ramen	9.00	85 grms	1.37	1.39	1.32	1.41	1.41	1.43	1.6%	8.4%
Fish (Piece)	7.92	kg	22.48	30.70	31.45	32.72	31.75	37.62	18.5%	19.6%
Butter	7.66	454 grms	18.79	18.76	18.83	19.54	19.54	20.11	2.9%	6.8%
Round Pancake (a)	7.50	sml	0.20	0.20	0.20	0.20	0.20	0.20	0.0%	0.0%
Mutton Flaps	6.63	kg	26.30	25.63	25.77	22.46	22.46	22.13	-1.5%	-14.1%
Canned fish betw een \$3.00 and \$3.99 N/Oi	6.37	425 grms	3.32	3.33	3.30	3.76	3.70	3.67	-0.9%	11.1%
Canned fish \$4:00 or over N/Oil	6.37	425 grms	4.89	4.97	4.75	5.44	5.18	5.18	0.0%	9.1%
Canned fish betw een \$3.00 and \$3.99 N/Oi	6.37	425grms	3.19	3.24	3.35	3.26	3.26	3.26	0.0%	-2.6%
Canned fish under \$3.00 in N/Oil	6.37	425 grms	2.75	2.73	2.77	2.95	2.90	2.92	0.6%	5.4%
Turkey Wings	6.31	kg	14.63	15.43	16.64	13.91	14.07	14.02	-0.4%	-15.7%
Fish (string)	5.98	kg	13.24	16.21	16.12	15.86	16.42	15.68	-4.5%	-2.7%
Fish (large)	5.98	kg	21.56	28.29	28.92	27.04	29.42	29.62	0.7%	2.4%
Cooking vegetable oil (a)	5.89	ltr	10.12	10.10	10.05	7.64	7.04	7.03	-0.2%	-30.1%
Sausage beef	5.76	kg	15.28	15.50	14.70	15.50	15.59	15.58	-0.1%	6.0%
Chinese Cabbage	5.53	kg	8.46	7.85	10.63	7.33	8.90	11.58	30.1%	8.9%
Eggs medium size	5.45	doz	7.65	7.87	8.02	8.05	8.07	8.05	-0.2%	0.5%
Flour plain w hite	5.29	kg	3.28	3.32	3.37	3.45	3.38	3.33	-1.4%	-1.0%
Onions	5.23	kg	4.12	4.33	5.46	5.70	6.39	6.33	-1.0%	15.9%
Milk Devondale	5.11	1tr	4.40	4.43	4.94	5.42	5.42	5.42	0.0%	9.7%
Soft Drink Coke	5.07	600 mls	3.11	3.11	3.12	3.82	3.82	3.82	0.2%	22.5%
Soft Drink Taxi	5.07	330 mls	1.92	1.92	1.92	1.92	1.92	1.92	-0.1%	0.0%
Milk Anchor	4.81	1tr	4.34	4.36	4.59	5.01	5.04	5.01	-0.6%	9.2%
Salted Beef	4.72	kg	22.83	23.61	23.59	23.55	23.55	23.55	0.0%	-0.2%
Canned fish Soifua in Tomato Sauce	4.47	425 grms	2.54	2.54	2.53	2.78	2.71	2.70	-0.5%	6.9%
CCK Coffee	4.47	100 grms	3.94	3.94	3.94	4.56	4.56	4.56	0.0%	15.7%
Sky Flakes Biscuits	4.29	850 grms	19.63	19.63	19.63	21.01	21.01	21.01	0.0%	7.1%
Stew ing beef	4.20	kg	17.01	17.11	17.11	18.90	18.90	18.90	0.0%	10.5%

Koko Samoa	4.09	cup	18.48	17.61	20.68	22.37	21.43	22.74	6.1%	9.9%
Corned Beef Pacific	3.64	340 grms	17.74	18.61	18.88	19.95	20.01	19.61	-2.0%	3.9%
Ramen kimchi (bow l)	3.40	86 grms	3.53	3.58	3.57	3.40	3.39	3.39	0.0%	-4.9%
Soy Sauce Mushroom	3.25	750 grms	3.60	3.68	3.61	3.67	3.77	3.66	-2.9%	1.4%
Pork Pig Trotter	3.10	kg	8.27	8.25	8.28	9.38	9.38	9.24	-1.6%	11.5%
Corned Beef Palm	3.01	340 grms	17.63	18.58	18.93	18.13	18.11	18.11	0.0%	-4.3%
Ripe Banana (a)	2.71	kg	4.24	4.13	3.65	4.54	4.88	4.58	-6.1%	25.5%
Tang powder (a)	2.51	25 grms	0.60	0.60	0.60	0.59	0.59	0.59	0.0%	-1.5%
Minties Pascall (a)	2.49	200 grms	12.50	12.50	16.50	12.50	12.50	12.50	0.0%	-24.2%
Potatoes	2.41	kg	5.08	6.00	6.64	6.44	6.12	6.25	2.1%	-5.9%
Green Banana	2.29	kg	1.57	1.44	1.50	1.90	1.86	1.58	-15.3%	5.2%
Apple small	2.26	each	1.39	1.58	1.69	1.64	1.70	1.68	-1.2%	-0.2%
Mineral Water	2.25	bottle	1.87	1.89	1.88	1.91	1.91	1.91	0.0%	1.4%
Chocolate Cake (a)	2.15	sml	21.50	22.40	22.40	24.30	24.30	26.30	8.2%	17.4%
Cucumbers	2.12	kg	5.73	5.68	6.40	6.56	6.67	7.44	11.4%	16.1%
Instant Nescafe Coffee	2.02	50 grms	8.78	8.78	8.82	9.44	8.96	8.96	0.0%	1.6%
Mutton Neck	1.93	kg	26.69	27.13	27.13	20.87	24.49	24.27	-0.9%	-10.5%
Vermicelli Lungken	1.88	454 grms	4.72	4.74	4.80	4.60	4.58	4.78	4.4%	-0.3%
Tomatoes	1.80	kg	14.04	15.26	19.98	16.42	18.52	24.95	34.7%	24.8%
Sausage Pork	1.68	kg	15.16	15.23	14.60	15.20	15.38	15.22	-1.0%	4.3%
Bell Tea Bags	1.62	50 grms	11.45	11.38	11.34	11.35	11.34	11.21	-1.1%	-1.1%
Samco Tw isties	1.40	20 grms	0.79	0.79	0.79	0.87	0.87	0.87	0.0%	10.9%
Matured husked Coconuts	1.30	kg	1.23	1.36	1.08	1.40	1.38	1.27	-8.0%	17.6%
Matured Un husked Coconuts (a)	1.30	kg	0.73	0.89	0.76	0.85	0.89	0.93	4.7%	22.3%
Taamu	1.13	kg	7.80	11.99	21.03	14.93	12.30	10.61	-13.7%	-49.5%
Round Cabbage Round	1.12	kg	8.43	9.62	12.59	8.62	9.87	13.08	32.6%	3.9%

02 Alcoholic beverages, tobacco and narcotics

Beer Vailima Lager	37.94	355 mls	3.80	3.80	3.80	3.80	3.80	3.80	0.0%	0.0%
Pall Mall Filter Cigarettes (Red)	24.29	20 rolls	14.60	14.60	14.60	15.00	15.00	15.00	0.0%	2.7%
Pall Mall Menthol Cigarettes (Green)	24.29	20 rolls	14.60	14.60	14.60	15.00	15.00	15.00	0.0%	2.7%
Beer Taula (a)	16.26	330 mls	3.68	3.68	3.73	4.38	4.31	4.35	0.9%	16.8%
Tobacco w infield (a)	12.64	30 grms	15.00	15.00	15.00	10.43	10.43	10.48	0.5%	-30.2%
Vodka Niu Spirit (a)	3.76	Niu / 2 ltr	66.82	66.82	66.82	66.78	66.78	66.78	0.0%	0.0%
Whisky Jim Bean Spirit (a)	3.76	1ltr	91.88	92.50	93.75	104.63	104.63	104.75	0.1%	11.7%
Paper Cigarettes	3.61	50 sheets	1.70	1.70	1.70	1.80	1.80	1.80	0.0%	5.9%
Samoa kava	1.82	pkt	42.50	22.27	39.04	40.65	42.50	44.85	5.5%	14.9%

03 Clothing and footwear

Uniform le Faitaga College boys	4.28	size 8-10	38.33	38.33	38.33	39.00	39.00	37.67	-3.4%	-1.7%
Uniform Pa'ave (a)	3.71	size 7	42.67	42.67	42.67	45.00	45.00	48.17	7.0%	12.9%
Jandals soft	2.48	10.5 size	9.10	9.17	9.33	9.75	9.75	9.75	0.0%	4.5%
Puletasi mamanu palama (a)	2.35	medium	125.00	125.00	125.00	128.75	128.75	130.00	1.0%	4.0%
le solosolo cotton print	2.22	42 inch	11.75	11.92	11.92	12.37	12.37	11.87	-4.0%	-0.4%
Cargo shorts (a)	1.76	38 size	93.00	93.00	93.00	93.00	93.00	93.00	0.0%	0.0%
Shirt short sleeves men Aloha shirt (a)	1.15	men / XL	56.85	58.10	58.10	59.98	59.98	59.98	0.0%	3.2%
Shirt long sleeves men	1.15	16.5 size	37.75	38.38	38.38	39.63	39.63	39.50	-0.3%	2.9%
Shoes Nike Running shoes (a)	0.82	size 9	224.75	224.75	224.75	259.75	259.75	232.25	-10.6%	3.3%
le Faitaga	0.70	36/38 size	38.05	38.05	39.30	38.38	38.38	38.38	0.0%	-2.4%
Woman Nylon Panties	0.59	medium	5.00	4.42	4.42	4.42	4.42	4.25	-3.8%	-3.8%

04 Housing, water, electricity, gas and other fuels

Electricity Cashpower	50.59	kwh	0.58	0.58	0.58	0.58	0.58	0.58	0.9%	0.9%
Reservoir treated Water	28.55	15-40 m3	1.34	1.34	1.34	1.34	1.34	1.34	0.0%	0.0%
Liquid gas	15.77	9kg	71.80	71.80	71.80	69.00	69.00	69.00	0.0%	-3.9%
Government house Rent	12.16	2 b/room	680.00	680.00	680.00	680.00	680.00	680.00	0.0%	0.0%
Kerosene	4.12	1 ltr	3.58	3.57	3.49	3.83	3.21	3.00	-6.6%	-14.0%
Paint High gloss white	3.45	4 ltrs	83.75	80.08	81.15	87.00	87.17	87.17	0.0%	7.4%
Paint Plus 2 plastic white	3.45	4 ltrs	49.80	49.80	50.80	54.40	54.40	54.40	0.0%	7.1%
Cement NZ or Australia	0.78	40 kg	45.77	46.24	46.30	35.41	35.87	35.10	-2.2%	-24.2%
Dressed per Timber 2x4	0.71	meter	11.01	10.97	11.03	10.40	10.41	10.44	0.3%	-5.3%

05 Furnishings, household equipment and routine household maintenance

Washing powder (a)	6.27	200 grms	2.01	2.08	2.09	2.08	2.08	2.08	0.0%	-0.5%
Washing Soap yellow	5.90	bar	3.42	3.22	3.22	3.51	3.51	3.61	2.8%	12.1%
Mosquito coil	4.36	10 coil	1.55	1.55	1.55	1.50	1.50	1.50	0.0%	-3.2%
Mattress single Futon (a)	3.81	4 inch	146.50	146.50	146.50	180.33	195.50	216.33	10.7%	47.7%
Babysitting live-in (a)	3.78	1 week	142.50	142.50	142.50	142.50	142.50	142.50	0.0%	0.0%
Refridgerator common brand	2.49	331-335 ltr	2362.52	2362.52	2362.52	2401.32	2343.32	2343.32	0.0%	-0.8%
Gold Power washing powder	1.68	180 grms	1.67	1.67	1.67	1.67	1.67	1.67	0.0%	0.0%
Eveready AA size Batteries	1.20	AA 1/4 size	3.70	3.70	3.70	4.21	4.27	4.27	0.0%	15.4%
Bush knife tramontina	0.88	24 inch	29.86	30.86	30.74	33.11	33.11	32.24	-2.6%	4.9%
Kerosene stove	0.16	2 burner	112.50	112.50	112.50	128.75	128.75	129.75	0.8%	15.3%
Tumblers Glass basic no design (a)	0.11	medium	16.66	16.66	16.66	15.34	16.04	16.04	0.0%	-3.7%
Sefe 3 shelves	0.11	48*48 inch	740.00	740.00	722.50	790.00	810.00	810.00	0.0%	12.1%
Clothing chest flat top	0.01	medium	607.50	607.50	607.50	762.50	770.00	770.00	0.0%	26.7%

06 Health

Amoxicillin 500mg tablets (a)	2.46	20 tablets	7.90	7.90	7.90	7.77	7.77	8.27	6.4%	4.6%
Hospital Charge	1.15	per night	22.50	22.50	22.50	22.50	22.50	22.50	0.0%	0.0%
Private Doctor Consultation fee	1.04	per adult	30.00	30.00	30.00	30.00	30.00	30.00	0.0%	0.0%

07 Transport

Petrol	60.80	1 ltr	3.51	3.34	3.35	3.52	3.23	3.15	-2.5%	-5.8%
Taxi Fare P.O to Motootua Hosp	8.15	per trip	4.80	4.80	4.80	4.80	4.80	4.80	0.0%	0.0%
Taxi Fares P.O to Malua	8.15	per trip	31.30	31.30	31.30	31.30	31.30	31.30	0.0%	0.0%
Taxi Fares P.O to Falefa	8.15	per trip	43.20	43.20	43.20	43.20	43.20	43.20	0.0%	0.0%
Air Fares Faleolo-Pago-Faleolo	6.84	return trip	676.02	676.02	676.02	680.00	754.61	754.61	0.0%	11.6%
Air Fares Apia Auckland Apia	6.77	1 month	1661.54	1410.34	1454.44	2167.97	1365.97	1760.94	28.9%	21.1%
Car Registration (private car)	5.67	1501-2000 cc	256.00	256.00	256.00	281.60	281.60	281.60	0.0%	10.0%
Used Car Toyota Corolla (a)	5.08	1500 cc	23500.00	23500.00	23500.00	28333.33	28333.33	28333.33	0.0%	20.6%
Used Car Toyota Camry (a)	5.08	1500 cc	18000.00	18000.00	18000.00	18000.00	18000.00	18000.00	0.0%	0.0%
Diesel	4.83	1 ltr	3.99	4.16	3.96	3.83	3.57	3.38	-5.3%	-14.7%
Bus Fares Apia Motootua Hosp	3.49	one adult	1.30	1.30	1.30	1.20	1.20	1.20	0.0%	-7.7%
Bus Fares Apia Malua	3.49	one adult	2.60	2.60	2.60	2.60	2.60	2.60	0.0%	0.0%
Bus Fares Apia Falefa	3.49	one adult	3.70	3.70	3.70	3.70	3.70	3.70	0.0%	0.0%
Labour charge car repair	3.38	min charge	67.00	67.00	67.00	67.00	67.00	67.00	0.0%	0.0%
New Pickup Ford Ranger Double cab (a)	3.25	3200 cc	94000.00	94000.00	94000.00	125000.00	125000.00	125000.00	0.0%	33.0%
New Pickup Toyota Hilux Double cab (a)	3.25	3200 cc	105000.00	105000.00	105000.00	118000.00	118000.00	118000.00	0.0%	12.4%
Used Mini van Toyota Noah (a)	2.42	2000 cc	22000.00	22000.00	22000.00	23666.67	23666.67	23666.67	0.0%	7.6%
Used Mini van Toyota Voxy (a)	2.42	2000 cc	22000.00	22000.00	22000.00	24166.67	24166.67	24166.67	0.0%	9.8%
Car Tyre	1.49	195/70 R(14)	197.50	197.50	197.50	217.50	212.50	215.00	1.2%	8.9%
Boat Fares Mulifanua Salelologa	1.14	one way	10.00	10.00	10.00	10.00	10.00	10.00	0.0%	0.0%
Boat Fares Apia Pago Apia	1.14	min charge	120.00	120.00	120.00	120.00	120.00	120.00	0.0%	0.0%

08 Communication

Calling per minute Rate cell phone (a)	10.02	per minute	0.55	0.55	0.55	0.55	0.55	0.59	7.3%	7.3%
Internet data bundles per mb Rate (a)	10.02	per mb	0.33	0.33	0.33	0.33	0.33	0.33	0.0%	0.0%
Calling per minute Rate cell phone (a)	10.02	per minute	0.49	0.49	0.49	0.49	0.49	0.49	0.0%	0.0%
Internet data bundles per mb Rate (a)	10.02	per mb	0.33	0.33	0.33	0.33	0.33	0.33	0.0%	0.0%
Telephone Rental	3.87	1month	24.15	24.15	24.15	24.15	24.15	24.15	0.0%	0.0%
Prepaid Internet	3.06	30 mins	5.80	5.80	5.80	5.80	5.80	5.80	0.0%	0.0%
Telephone call NZ	1.50	3 mins	2.37	2.37	2.37	2.37	2.37	2.37	0.0%	0.0%
Telephone call USA	1.50	3 mins	2.97	2.97	2.97	2.97	2.97	2.97	0.0%	0.0%
Telephone call local	1.50	1min	0.10	0.10	0.10	0.10	0.10	0.10	0.0%	0.0%

09 Recreation and culture

Television LCD 32" (a)	2.30	LCD 32"	839.33	841.00	832.83	804.00	747.50	840.67	12.5%	0.9%
Exercise Book w arw ick	1.44	1B4	1.40	1.40	1.47	1.47	1.47	1.72	17.0%	17.0%
Laptop (a)	1.33	each	3516.80	3516.80	3597.80	3911.50	3911.50	3719.83	-4.9%	3.4%
Weedkiller Graxomone/Agriquat (a)	0.56	1ltr	51.67	51.67	51.67	51.67	51.67	46.67	-9.7%	-9.7%
Cinema Admission	0.41	ticket	15.00	15.00	15.00	15.00	15.00	15.00	0.0%	0.0%
New s Paper Samoa Observer	0.01	each	2.50	2.50	2.50	2.50	2.50	2.75	10.0%	10.0%
New s Paper New sline	0.01	each	2.50	2.50	2.50	2.50	2.50	2.50	0.0%	0.0%

10 Education

Fees Primary PTA/registration fees (a)	7.23	Year 6	72.50	72.50	72.50	72.50	72.50	72.50	0.0%	0.0%
Fees Secondary PTA/registration fees (a)	5.11	Year 10	58.00	58.00	58.00	58.00	58.00	58.00	0.0%	0.0%
Fees Tertiary NUS registration School Fees	3.79	registration	322.00	322.00	322.00	122.00	122.00	122.00	0.0%	-62.1%
Fees Secondary Y Examination Fees (a)	3.61	Y12-13	25.50	25.50	25.50	25.50	25.50	25.50	0.0%	0.0%

11 Restaurants and hotels

Fish & Chip Meal	7.79	1serve	11.58	11.58	11.58	11.58	11.58	11.58	0.0%	0.0%
Curry & Chopsuey Meal	4.87	1serve	5.00	5.00	5.00	5.33	5.33	5.33	0.0%	6.7%
Chicken & Chips Meal (a)	4.87	1serve	12.14	12.14	12.14	13.57	13.57	13.57	0.0%	11.8%
Steam rice & chicken Meal (a)	4.87	1serve	6.67	6.67	6.67	7.00	7.00	7.00	0.0%	5.0%

12 Miscellaneous goods and services

Toilet Paper Sofan deluxe ply	8.52	250 sheets	1.21	1.20	1.20	1.23	1.19	1.18	-1.1%	-2.1%
Hair Gel	4.59	124 ml	5.50	5.50	5.57	5.76	5.76	5.61	-2.5%	0.8%
Storage of remains (a)	4.41	per day	60.00	60.00	60.00	66.67	66.67	66.67	0.0%	11.1%
Basic Casket (a)	4.41	each	1966.67	1966.67	1966.67	1966.67	1966.67	1966.67	0.0%	0.0%
Standard Embalming (a)	4.41	1person	1500.00	1500.00	1500.00	1675.00	1675.00	1675.00	0.0%	11.7%
Toilet soap Protex (a)	4.38	90g	2.05	2.04	2.04	2.05	2.05	2.05	0.0%	0.9%
Diapers Soft Love (a)	4.19	5kg-10kg	7.56	7.50	7.56	7.50	7.50	7.44	-0.8%	-1.5%
Toilet soap Lux	3.87	85g	1.10	1.10	1.18	1.34	1.35	1.35	0.0%	14.9%
Paste Colgate regular flavour	3.43	140g	4.66	4.76	4.86	5.03	5.08	5.07	-0.2%	4.3%
Diapers Huggies	1.30	16kg & over	39.73	39.73	39.72	42.96	42.96	42.96	0.0%	8.1%

Source : Samoa Bureau Statistics

(a) : New commodity from February 2016

(P) : Provisional figures

Note : Please note unit of conversion was in pound's (lb's) but been converted into kilograms (kg)

Table 4. IMPORTED GOODS COMPONENT OF THE CONSUMER PRICE INDEX

(Base Period : Average Prices February 2016 = 100)

	All Items	Food and Non Alcoholic Beverages	Alcoholic Beverages, Tobacco and Narcotics	Clothing and Footwear	Housing, Water , Electricity, Gas and other Fuels	Furnishings, Household Equipment and Maintenance	Health	Transport	Communication	Recreation and Culture	Education	Restaurants	Miscellaneous goods and services
<i>Weights</i>	494.7	269.1	23.8	15.2	28.3	26.9	2.5	88.6	<i>n.a</i>	5.6	<i>n.a</i>	<i>n.a</i>	34.7
<i>Ave - 2020</i>	107.9	112.2	117.1	93.2	96.0	97.7	95.8	107.4		87.6			98.0
<i>Ave - 2021</i>	114.0	118.4	118.8	100.9	99.1	98.7	108.0	119.9		87.3			95.9
<i>Ave - 2022</i>	131.5	136.3	119.2	114.6	121.9	105.7	100.9	149.1		90.4			102.0
<i>Ave - 2023</i>	132.9	138.1	119.2	114.9	123.1	106.2	99.8	150.2		90.7			103.0
<i>2023</i>													
January	137.9	147.5	119.6	114.3	126.0	106.9	97.4	146.6		92.8			108.0
February	140.2	155.5	119.5	113.8	122.8	107.6	97.4	135.6		92.8			108.5
March	140.7	154.0	119.9	116.6	124.8	107.2	92.9	141.2		92.8			111.9
April	141.1	154.6	109.9	117.3	124.7	107.3	92.9	143.3		95.3			112.1
May	141.5	154.5	111.0	117.5	121.5	107.6	92.9	146.4		91.7			113.1
June	144.2	158.4	102.4	117.8	131.7	107.6	94.1	148.7		91.7			112.7
July	143.2	159.8	102.3	117.8	118.7	109.9	94.1	142.4		90.6			113.4
August	140.8	156.4	103.2	117.7	117.9	109.7	89.7	140.1		90.0			113.0
September	140.1	153.4	103.2	118.0	119.3	111.0	91.8	143.8		91.2			113.1
October	142.1	154.1	103.3	117.8	122.7	111.2	96.0	152.2		91.6			112.0
November	142.0	152.0	103.8	117.8	126.6	112.3	96.0	155.7		94.1			111.9
December	142.0	155.8	103.8	117.8	121.5	112.9	96.0	146.0		92.2			111.1
<i>2024</i>													
January (P)	143.4	159.3	104.0	117.7	119.6	114.7	107.7	142.9		98.0			110.4
<u>Percentage Change (P)</u>													
Jan 2024 over Jan 2023	4.0%	8.0%	-13.1%	3.0%	-5.0%	7.3%	10.6%	-2.5%		5.6%			2.2%
Jan 2024 over Dec 2023	1.0%	2.2%	0.2%	-0.1%	-1.5%	1.6%	12.2%	-2.1%		6.3%			-0.6%

: Samoa Bureau Statistics
(P) : Provisional figures
Note : n.a. Not applicable

Table 5. IMPORTED ITEMS UNDERLYING INDEX
(Base Period : Average Prices February 2016 = 100)

	All Items	Food and Non Alcoholic Beverages	Alcoholic Beverages, Tobacco and Narcotics	Clothing and Footwear	Housing, Water , Electricity, Gas and other Fuels	Furnishings, Household Equipment and Maintenance	Health	Transport	Communication	Recreation and Culture	Education	Restaurants	Miscellaneous goods and services
Weights	401.2	269.1	n.a	15.2	24.2	26.9	2.5	23.0	n.a	5.6	n.a	n.a	34.7
<i>Ave - 2020</i>	107.6	112.2		93.2	93.7	97.7	95.8	110.4		87.6			98.0
<i>Ave - 2021</i>	112.3	118.4		100.9	94.5	98.7	108.0	114.4		87.3			95.9
<i>Ave - 2022</i>	126.8	136.3		114.6	110.2	105.7	100.9	115.7		90.4			102.0
<i>Ave - 2023</i>	128.2	138.1		114.9	110.9	106.2	99.8	116.0		90.7			103.0
<i>2023</i>													
January	135.2	147.5		114.3	112.9	106.9	97.4	117.8		92.8			108.0
February	140.7	155.5		113.8	112.9	107.6	97.4	117.8		92.8			108.5
March	140.1	154.0		116.6	114.3	107.2	92.9	118.2		92.8			111.9
April	140.7	154.6		117.3	114.2	107.3	92.9	119.9		95.3			112.1
May	141.0	154.5		117.5	113.9	107.6	92.9	125.8		91.7			113.1
June	144.4	158.4		117.8	125.8	107.6	94.1	125.8		91.7			112.7
July	145.0	159.8		117.8	111.3	109.9	94.1	132.5		90.6			113.4
August	142.6	156.4		117.7	111.2	109.7	89.7	132.5		90.0			113.0
September	140.7	153.4		118.0	111.2	111.0	91.8	131.5		91.2			113.1
October	141.1	154.1		117.8	111.0	111.2	96.0	131.5		91.6			112.0
November	139.9	152.0		117.8	110.3	112.3	96.0	133.4		94.1			111.9
December	142.4	155.8		117.8	110.4	112.9	96.0	133.3		92.2			111.1
<i>2024</i>													
January (P)	144.9	159.3		117.7	110.3	114.7	107.7	133.4		98.0			110.4
<u>Percentage Change (P)</u>													
Jan 2024 over Jan 2023	7.2%	8.0%		3.0%	-2.3%	7.3%	10.6%	13.2%		5.6%			2.2%
Jan 2024 over Dec 2023	1.8%	2.2%		-0.1%	-0.1%	1.6%	12.2%	0.0%		6.3%			-0.6%

Source : Samoa Bureau Statistics

(P) : Provisional figures

Note : n.a. Not applicable

Table 6. LOCAL GOODS COMPONENT OF THE CONSUMER PRICE INDEX

(Base Period : Average Prices February 2016 = 100)

Group	All Items	Food and Non Alcoholic Beverages	Alcoholic Beverages, Tobacco and Narcotics	Clothing and Footwear	Housing, Water , Electricity, Gas and other Fuels	Furnishings, Household Equipment and Maintenance	Health	Transport	Communication	Recreation and Culture	Education	Restaurants	Miscellaneous goods and services
Weights	505.3	134.6	104.6	6.0	91.3	3.9	2.2	59.9	51.5	0.4	19.7	22.4	8.8
Ave - 2020	105.3	106.8	120.7	94.2	87.6	100.3	103.0	100.1	104.2	100.0	114.9	109.4	102.3
Ave - 2021	105.9	105.6	122.2	93.8	90.3	100.3	103.0	99.6	107.1	100.0	109.9	111.2	102.3
Ave - 2022	112.6	122.8	123.6	92.1	84.2	100.6	103.0	104.3	124.5	100.0	109.4	126.2	102.3
Ave - 2023	113.5	124.7	123.8	91.8	84.3	100.7	103.0	105.1	125.8	100.0	109.4	127.6	102.3
2023													
January	118.6	138.4	124.5	90.7	84.7	100.9	103.0	108.2	132.0	100.0	109.4	135.1	102.3
February	118.0	137.5	124.9	90.7	84.7	100.9	103.0	108.9	132.0	100.0	96.3	135.1	102.3
March	119.1	139.0	126.7	93.0	84.7	101.1	103.0	108.4	132.0	100.0	96.3	140.1	107.0
April	122.8	152.7	126.8	93.6	84.7	101.1	103.0	108.4	132.0	100.0	96.3	140.1	107.0
May	121.8	147.9	126.7	93.6	84.7	101.1	103.0	111.3	132.0	100.0	96.3	140.1	107.0
June	123.9	155.1	126.9	93.6	85.0	101.2	103.0	112.1	132.0	100.0	96.3	140.1	107.0
July	124.9	158.9	128.0	93.6	85.0	101.2	103.0	109.4	132.0	100.0	96.3	140.1	113.0
August	125.0	157.5	127.7	93.6	85.0	101.2	103.0	112.2	132.0	100.0	96.3	141.9	113.0
September	123.6	152.7	128.2	94.2	85.0	101.1	103.0	110.8	132.0	100.0	96.3	141.9	113.0
October	122.7	148.9	129.0	95.1	85.0	101.1	103.0	110.4	132.0	100.0	96.3	141.9	113.0
November	123.1	149.4	129.1	94.7	85.0	101.3	103.0	112.8	132.0	100.0	96.3	141.9	113.0
December	122.3	148.0	128.8	94.7	84.7	101.4	103.0	109.9	132.0	100.0	96.3	141.9	113.0
January (P)	123.8	151.2	129.0	95.1	85.0	101.4	103.0	112.8	133.7	100.2	96.3	141.9	113.0
<u>Percentage Change (P)</u>													
Jan 2024 over Jan 2023	4.3%	9.2%	3.6%	4.9%	0.4%	0.5%	0.0%	4.3%	1.3%	0.2%	-12.0%	5.1%	10.5%
Jan 2024 over Dec 2023	1.2%	2.1%	0.2%	0.5%	0.4%	0.0%	0.0%	2.6%	1.3%	0.2%	0.0%	0.0%	0.0%

Source : Samoa Bureau Statistics

(P) : Provisional figures

Table 7. LOCAL ITEMS UNDERLYING INDEX

(Base Period : Average Prices February 2016 = 100)

Group	All Items	Food and Non Alcoholic Beverages	Alcoholic Beverages, Tobacco and Narcotics	Clothing and Footwear	Housing, Water , Electricity, Gas and other Fuels	Furnishings, Household Equipment and Maintenance	Health	Transport	Communication	Recreation and Culture	Education	Restaurants	Miscellaneous goods and services
Weights	185.5	76.1	n.a	6.0	n.a	3.9	1.0	3.4	51.5	n.a	12.3	22.4	8.8
Ave - 2020	104.6	101.9		94.2		100.3	106.3	108.6	104.2		120.6	109.4	102.3
Ave - 2021	105.1	102.1		93.8		100.3	106.3	108.6	107.1		112.7	111.2	102.3
Ave - 2022	114.3	108.1		92.1		100.6	106.3	114.4	124.5		111.9	126.2	102.3
Ave - 2023	115.2	109.1		91.8		100.7	106.3	114.4	125.8		111.9	127.6	102.3
2023													
January	120.2	114.9		90.7		100.9	106.3	114.4	132.0		111.9	135.1	102.3
February	120.7	116.3		90.7		100.9	106.3	114.4	132.0		111.9	135.1	102.3
March	122.3	117.9		93.0		101.1	106.3	114.4	132.0		111.9	140.1	107.0
April	122.6	118.6		93.6		101.1	106.3	114.4	132.0		111.9	140.1	107.0
May	122.4	118.2		93.6		101.1	106.3	114.4	132.0		111.9	140.1	107.0
June	123.2	120.1		93.6		101.2	106.3	114.4	132.0		111.9	140.1	107.0
July	123.6	120.4		93.6		101.2	106.3	114.4	132.0		111.9	140.1	113.0
August	124.1	120.9		93.6		101.2	106.3	114.4	132.0		111.9	141.9	113.0
September	124.4	121.6		94.2		101.1	106.3	114.4	132.0		111.9	141.9	113.0
October	124.5	121.8		95.1		101.1	106.3	114.4	132.0		111.9	141.9	113.0
November	124.6	122.2		94.7		101.3	106.3	114.4	132.0		111.9	141.9	113.0
December	124.4	121.6		94.7		101.4	106.3	114.4	132.0		111.9	141.9	113.0
2024													
January (P)	125.0	121.8		95.1		101.4	106.3	114.4	133.7		111.9	141.9	113.0
<u>Percentage Change (P)</u>													
Jan 2024 over Jan 2023	4.0%	6.0%		4.9%		0.5%	0.0%	0.0%	1.3%		0.0%	5.1%	10.5%
Jan 2024 over Dec 2023	0.5%	0.2%		0.5%		0.0%	0.0%	0.0%	1.3%		0.0%	0.0%	0.0%

Source : Samoa Bureau Statistics

(P) : Provisional figures

Note : n.a. Not applicable

Table 8. CONSUMER PRICE INDEX (AVERAGE ANNUAL INFLATION RATE).

(Base Period : Average Prices February 2016 = 100)

	All Items	Food and Non Alcoholic Beverages	Alcoholic Beverages, Tobacco and Narcotics	Clothing and Footwear	Housing, Water, Electricity, Gas and other Fuels	Furnishings, Household Equipment, and Maintenance	Health	Transport	Communication	Recreation and Culture	Education	Restaurants	Miscellaneous goods and services
Weights	1000.0	403.7	128.4	21.2	119.6	30.8	4.6	148.5	51.5	6.1	19.7	22.4	43.5
2019	1.0	1.0	4.1	-1.6	4.4	-1.6	3.1	-3.2	0.9	-4.2	2.8	4.4	0.0
2020	-1.6	-1.5	2.7	-0.3	-5.7	1.8	-0.9	-6.1	0.0	-0.3	1.2	5.9	1.0
2021	3.1	3.4	1.3	5.8	3.1	0.9	6.5	7.0	2.8	-0.3	-4.3	1.7	-1.6
2022	11.0	15.5	1.0	9.5	0.8	6.2	-3.6	17.3	16.2	3.2	-0.4	13.5	5.0
2023	7.9	15.9	0.8	1.9	0.8	3.1	-3.4	0.0	6.0	1.9	-11.0	10.9	8.9
2023													
January	11.0	15.6	1.1	8.4	0.5	6.5	-4.4	16.7	16.4	3.4	0.0	14.1	6.0
February	11.2	16.2	1.2	6.9	0.6	6.6	-5.5	16.2	16.6	3.7	-1.0	14.8	6.8
March	11.5	16.9	1.3	5.5	0.6	6.5	-5.6	15.6	16.8	3.4	-2.0	15.7	7.7
April	11.7	17.7	1.4	4.3	0.5	6.5	-5.4	14.6	17.0	3.2	-3.0	16.7	8.4
May	12.0	18.5	1.4	3.0	0.3	6.6	-4.5	13.9	17.2	3.0	-4.0	17.7	9.0
June	12.0	19.1	1.3	1.9	0.8	5.9	-3.5	12.0	17.4	2.8	-5.0	17.1	9.4
July	11.5	19.0	1.2	1.8	1.1	5.3	-3.9	9.5	14.8	2.6	-6.0	16.4	9.7
August	10.3	18.2	1.1	1.7	1.1	4.6	-5.0	5.5	12.3	2.1	-7.0	15.9	9.7
September	9.1	16.6	0.9	1.7	1.3	4.1	-5.1	3.0	9.9	1.7	-8.0	14.6	9.7
October	8.3	15.5	0.9	1.6	1.8	3.4	-4.4	1.7	8.4	2.1	-9.0	13.5	9.6
November	8.0	15.5	0.8	1.8	1.3	3.1	-3.9	0.7	7.2	2.1	-10.0	12.2	9.3
December	7.9	15.9	0.8	1.9	0.8	3.1	-3.4	0.0	6.0	1.9	-11.0	10.9	8.9
2024													
January (P)	7.3	15.1	0.7	2.1	0.4	3.2	-2.4	-0.8	5.0	1.9	-12.0	10.2	8.4

Source : Samoa Bureau Statistics

(P) : Provisional figures

Table 9 Consumer Price Index (Percentage change and Average Annual Inflation)

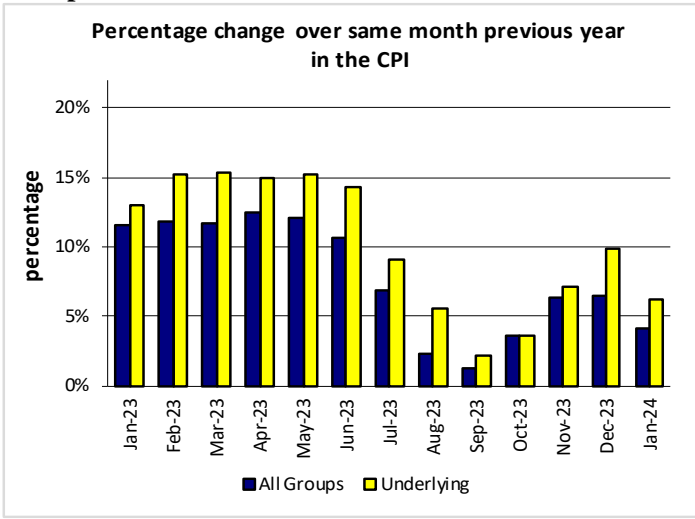
(Base Period: Average Prices February 2016 = 100)

	CPI ALL ITEMS	Percentage change over previous month	Last 12 months over previous 12 months	UNDERLYING ALL ITEMS	Percentage change over previous month	Last 12 months over previous 12 months	LOCAL COMPONENT	Percentage change over previous month	Last 12 months over previous 12 months	IMPORTED COMPONENT	Percentage change over previous month	Last 12 months over previous 12 months
2019	108.3	-	1.0	107.2	-	0.5	105.5	-	2.8	111.1	-	-0.7
2020	106.6	-	-1.6	106.6	-	-0.5	105.3	-	-0.2	107.9	-	-2.9
2021	109.9	-	3.1	110.1	-	3.2	105.9	-	0.6	114.0	-	5.7
2022	122.0	-	11.0	122.9	-	11.6	112.6	-	6.3	131.5	-	15.3
2023	123.1	-	0.9	124.1	-	1.0	113.5	-	0.8	132.9	-	1.0
2023												
January	128.2	3.3	11.0	130.5	4.9	11.9	118.6	1.0	6.7	137.9	5.5	15.1
February	129.0	0.6	11.2	134.4	3.0	12.3	118.0	-0.5	7.1	140.2	1.6	15.1
March	129.8	0.6	11.5	134.5	0.1	12.9	119.1	0.9	7.5	140.7	0.4	15.2
April	131.8	1.6	11.7	135.0	0.4	13.4	122.8	3.1	8.2	141.1	0.2	15.1
May	131.5	-0.2	12.0	135.2	0.1	13.9	121.8	-0.8	8.7	141.5	0.3	15.0
June	133.9	1.8	12.0	137.7	1.9	14.2	123.9	1.8	9.2	144.2	1.9	14.5
July	134.0	0.0	11.5	138.2	0.4	13.7	124.9	0.8	9.4	143.2	-0.7	13.3
August	132.8	-0.9	10.3	136.7	-1.1	12.9	125.0	0.0	9.3	140.8	-1.6	11.2
September	131.8	-0.8	9.1	135.5	-0.9	11.5	123.6	-1.1	9.0	140.1	-0.5	9.2
October	132.3	0.4	8.3	135.8	0.2	10.4	122.7	-0.7	8.9	142.1	1.5	7.8
November	132.4	0.1	8.0	135.1	-0.6	10.1	123.1	0.3	8.9	142.0	-0.1	7.3
December	132.0	-0.3	7.9	136.7	1.2	10.2	122.3	-0.7	8.5	142.0	0.0	7.4
2024												
January (P)	133.5	1.1	7.3	138.6	1.4	9.7	123.8	1.2	8.0	143.4	1.0	6.7

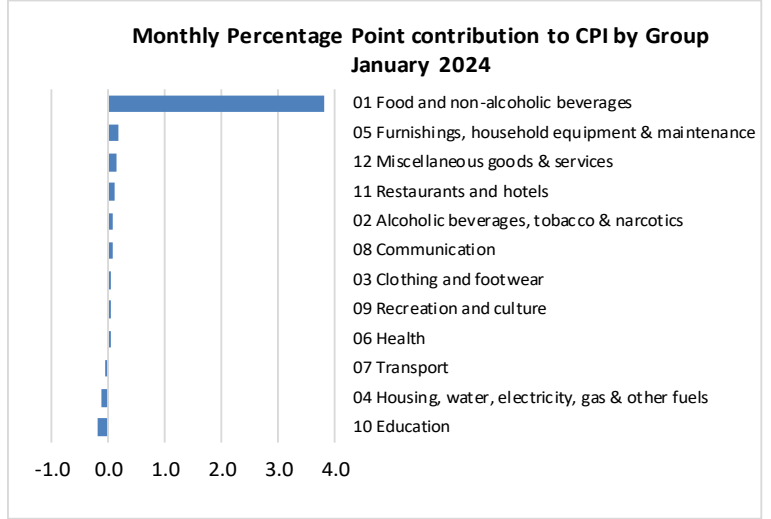
Source : Samoa Bureau Statistics

(P) : Provisional figures

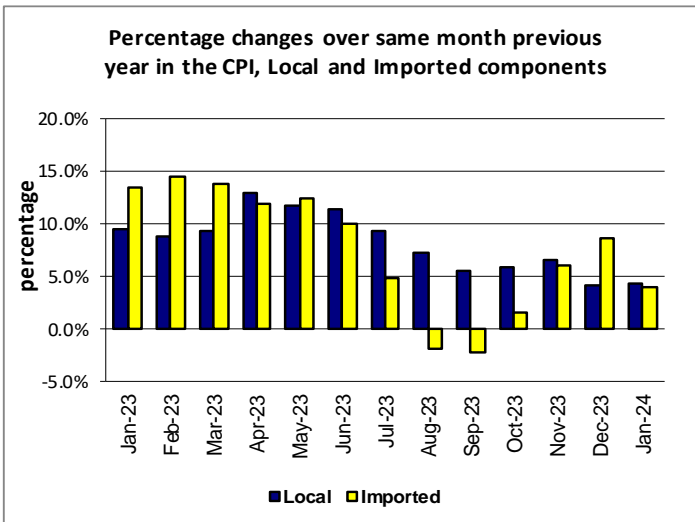
Graph.5



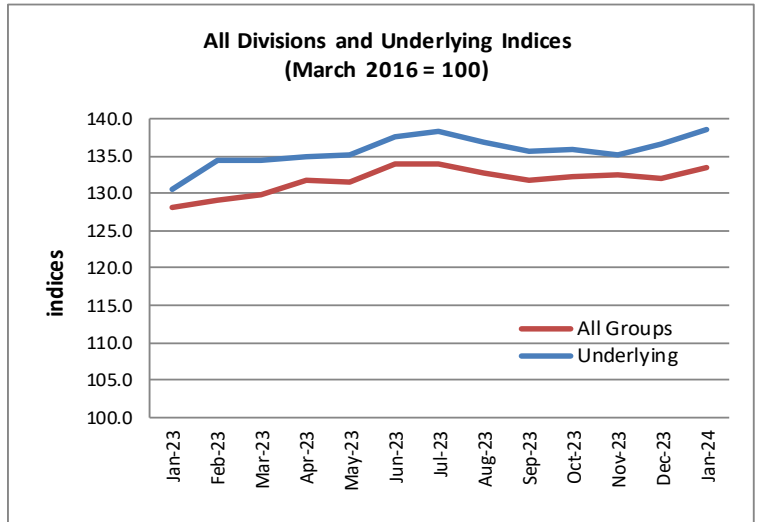
Graph.6



Graph.7



Graph.8



Graph.9

