

SAMOA BUREAU OF STATISTICS

CONSUMER PRICE INDEX MARCH 2024

Key findings:

The Consumer Price Index for March 2024 increased by 3.1 percent compared to the same month of the previous year.

- The Health index increased by 14.9 percent.
- The Furnishings, Household equipment and Maintenance index increased by 5.5 percent.
- The Food & Non-Alcoholic index increased by 5.2.

The Average Annual Inflation for the year ended March 2024 was 5.9 percent.

The CPI rose 0.2 percent from February 2024.

SUMMARY

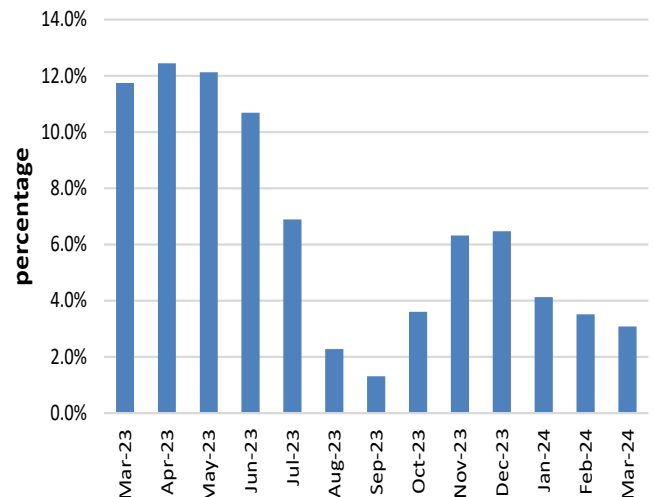
The Consumer Price Index (CPI) for March 2024 rose 3.1 percent compared to March 2023. This was mainly influenced by higher prices for medicine, new and used cars, boat fares to Pago Pago and household furniture.

When compared to the previous month, the CPI went up by 0.2 percent. Graph 1 shows the percentage changes over the same month of the previous year in the CPI by all Divisions from March 2023 to March 2024.

The Imported goods component increased by 3.7 percent mainly due to higher prices recorded for food items, new and used cars, medicine and household furniture.

The Local goods component also rose 2.4 percent when compared to the same month last year due to the increase in prices for local food such as Chinese cabbage, cucumber, tomatoes and coconut.

Graph 1: Current month over same month previous year, percentage change in the CPI by All Items (Mar 2023 - Mar 2024)



Source: Samoa Bureau of Statistics

Total All Divisions Contribution

As shown in Graph 2, Food & Non-Alcoholic Beverages was the largest contributor to the 3.1 percent rise in the CPI in March 2024, with a contribution of 2.4 percentage points to the overall increase in March 2024. The most significant drivers of this within the group were chicken leg quarter (up 13.2%), sugar (up 15.0%), rice prepacked (up 12.0%), canned fish (up 8.1%), local coffee (up 10.5%), Chinese cabbage (up 33.6%), cucumber (up 30.4%), tomato (up 28.5%) and coconut (up 16.5%).

Transport was the next largest contributor with a contribution of 0.5 percentage point, increasing 3.2 percent compared to March 2023. This was mainly influenced by the increase in prices of a new double cap pickup (up 22.7.0%), used mini vans (up 11.0%) and return boat fare to Pago Pago (up 16.7%).

Furnishings, household equipment and Maintenance contributed 0.1 percentage-point, increasing 5.5 percent when compared with March 2023 as a result of the increase in the price of mattress (up 46.3%). Communication contributed 0.1 percentage-point, increasing 1.3 percent when compared with March 2023 as a result of the increase in the price of cell phone calling (up 7.3%).

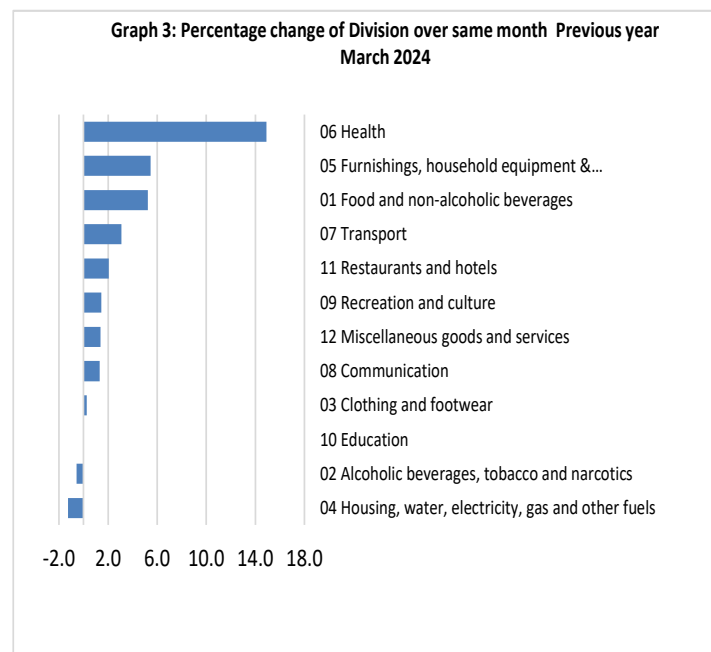
Health contributed 0.1 percentage-point, increasing 14.9 percent compared to March 2023. This was influenced mainly by the increases in prices of Amoxicillin (up 14.2%). Miscellaneous goods and services also contributed 0.1 percentage-point to the rise in CPI due to the increase in price of standard embalming (up 9.8%).

Consumer Price Index (% Change)

Graph 3 shows the percentage change for all Divisions (groups) in March 2024 in comparison to March 2023. Health had the largest increase of 14.9%. Furnishings household equipment & Maintenance rose 5.5% followed by Food and Non Alcoholic which rose 5.2%. Transport and Restaurants both increased by 3.2% and 2.1% respectively.

Other groups such as Recreation, Miscellaneous, Communication, Clothing and Footwear indices recorded increases of 1.4, 1.4, 1.3, and 0.3 percent respectively.

On the other hand, Alcoholic beverages, tobacco & narcotics and Housing, water, electricity, gas & other fuels declined by 0.6% and 1.3% while the Education index revealed no change.



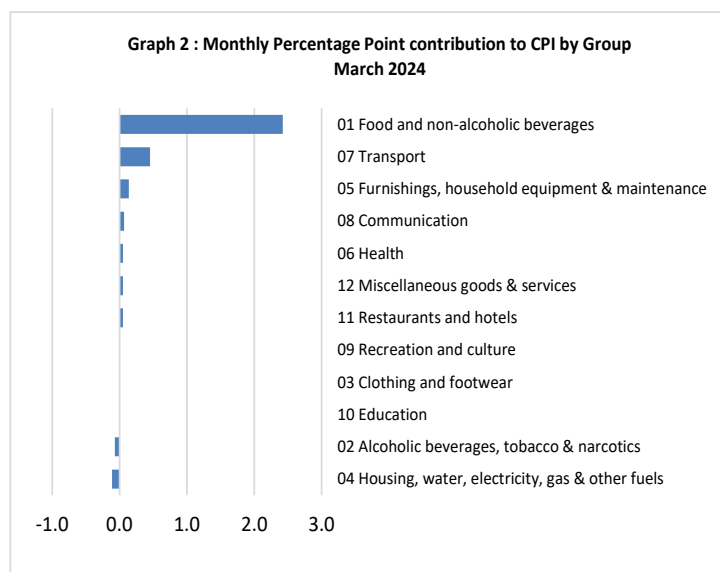
Source: Samoa Bureau of Statistics

Imported Goods Component

The Imported goods component of the CPI registered an increase of 3.7 percent when compared to the same month last year. This was mainly due to higher prices recorded for food items, new and used cars, medicine and household furniture.

Local Goods Component

The increase in prices for Chinese cabbage, cucumber, tomato and meals have resulted in a 2.4 percent increase in the local goods component.



Source: Samoa Bureau of Statistics

Changes by Division / Group

Health Index

The 14.9 percent increase in the Health Index was influenced by higher prices recorded for medicine (amoxicillin tablets) which went up 14.2%.

Furnishings, Household Equipment & Maintenance Index

The Furnishings, Household Equipment & Maintenance index rose 5.5 percent due to the increase in prices for single mattress (up 46.3%), refrigerator (up 10.1%) and bush knife (up to 8.7%).

Food and Non-Alcoholic Beverages Index

The increase of 5.2 percent in the Food & Non-Alcoholic Beverages index was influenced by higher prices recorded for chicken leg quarter (up 13.2%), sugar (up to 15.0%), rice prepacked (up 12.0%), canned fish (up 8.1%), local coffee (up 10.5%), Chinese cabbage (up 33.6%), cucumber (up 30.4%), tomato (up 28.5%) and coconut (up 16.5%).

Transport

The increase in the price of a new pickup truck is reflected in the 3.2 percent increase in the Transport Index.

Restaurants Index

The Restaurants index recorded an increase of 2.1 percent due to the rise in prices for steamed rice & chicken meal (up 5.0%) and fish and chips meal (up 2.2%).

Miscellaneous Goods and Services Index

The 1.4 percent rise in the Miscellaneous Goods & Services index was due to higher prices recorded for toilet soap (up 3.8%), embalming services (up 9.8%) and diapers (up 9.5%).

Recreation and Culture Index

The Recreation and Culture index also went up 1.4 percent due to the increase in the prices for exercise book (up 17.0%) and newspaper (up 15.0%).

Communication Index

The rise in price for mobile phone calling per minute (up 7.3%) was the major contributor to the 1.3 percent increase in the Communication index.

Clothing and Footwear Index

The 0.3 percent increase in the Clothing and Footwear index was a result of the 16.7% increase in the prices for running shoes.

Housing, Water, Electricity, Gas and other Fuels Index

The decline in prices for cement and kerosene has led to a 1.3 percent decrease in the Housing, Water, Electricity, Gas, and other Fuels index.

Alcoholic Beverages and Tobacco Index

The decline in prices for beer contributed primarily to the 0.6 percent decrease in the Alcoholic Beverages and Tobacco index.

Education

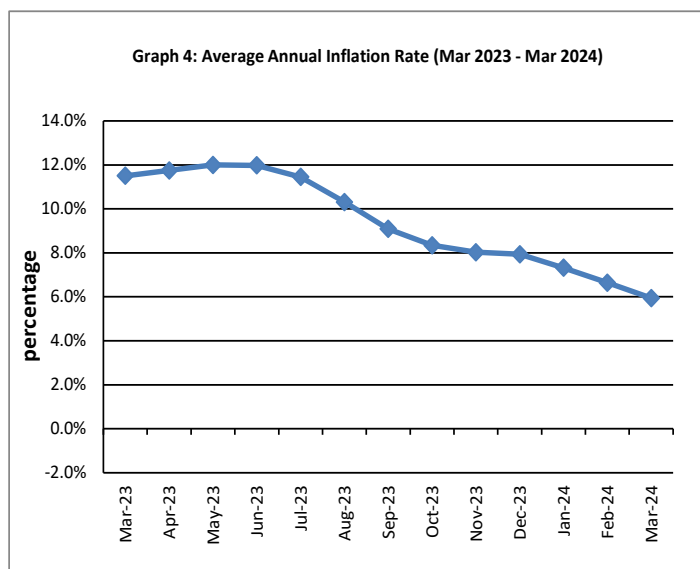
The Education index reveals no change when compared to March 2023.

Underlying Indices ^{1/}

The All Items Underlying Index for March 2024 registered an increase of 4.3 percent when compared to March 2023. It decreased 0.4 percent when compared to February 2024. Both the Imported and Local items underlying Indices recorded increases of 5.2 and 2.2 percent respectively.

Annual Inflation Rate

The average annual inflation rate for the year ended March 2024 was 5.9 percent. For the twelve months ending March 2023, the inflation rate was 11.5 percent. Presented in Graph 4 is the average annual inflation rate (Mar 2023 - Mar 2024).



Source: Samoa Bureau of Statistics

The attached Tables and Graphs provide the user with a more detailed analysis.

Technical Notes:

The Consumer Price (CPI) measures the rate of inflation for Samoa. It is designed to measure the change in prices for the goods purchased by households in Samoa. The CPI measures the change in prices by comparing the prices for a basket of goods and services at the collection period with the price for the same goods in a base period.

The basket of goods that is priced is based on the average expenditures of households as recorded in the Household Income and Expenditure Survey (HIES). The HIES survey identifies how much households spend on different items. The more households spend on an item on average, the more important it is to the price index, and the higher the weight in the index.

^{1/} Monthly movements in the 'headline' CPI series can be volatile. This volatility reflects price changes in particular items that may be due, among other factors, to fluctuations in commodity markets and agricultural conditions, policy changes, or seasonal or infrequent price resetting.

Underlying inflation is a measure of inflation that excludes certain items that face volatile price movements. Underlying inflation eliminates products that can have temporary price shocks because these shocks can diverge from the overall trend of inflation and give a false measure of inflation.

SAMOA BUREAU OF STATISTICS

*Economic Statistics Division
FMFM II Building, Level I
P O Box 1151
Apia, Samoa*

Phone: (685) 62014/62015

Fax: (685) 24675

E-mail: info.stats@sbs.gov.ws

Website: www.sbs.gov.ws

Date of release: 15th April 2024

The next Consumer Price Index will be released on 15th May 2024.

OFISA FUAINUMERA FAAMAUINA

FUA FAATATAU O OLOA MA AUAUNAGA MATI 2024

Fa'amatalaga 'Autu:

O le Fuafa'atatau o Tau o 'Oloa ma 'Auaunaga mo le masina o Mati 2024 ua si'itia i le 3.1 pasene pe a fa'atusa i le masina o Mati o le tausaga ua mavae (2023).

- Soifua Maloloina ua si'itia i le 14.9 pasene.
- Vaega o Meāfale ua si'itia i le 5.5 pasene.
- O Meaai ma Vaiinu ua si'itia i le 5.2 pasene.

O le fesuaiga o Tau o Oloa ma Auaunaga i le tausaga faaiuina ia Mati 2024 na si'itia i le 5.9 pasene.

A faatusa ia Fepuari 2024, na si'itia tau o oloa ma auaunaga i le 0.2 pasene.

AOTELEGA

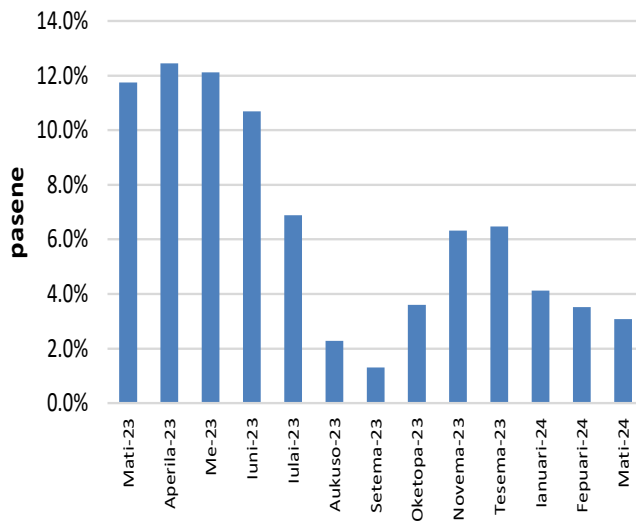
O le Fuafa'atatau o Tau o Oloa ma Auaunaga mo le masina o Mati 2024 ua si'itia i le 3.1 pasene pe a fa'atusa ia Mati 2023. E mafua mai ona o le maualuga o tau na faamauina mo fuālaau mo togafitiga, ta'avale fou ma ta'avale na faaoga muamua, pasese o va'a e malaga ai i Pago Pago ma nisi o meafale.

A fa'atusa i le masina ua mavae, o le Fuafa'atatau o tau o oloa ma auaunaga ua si'itia i le 0.2 pasene. O le Kalafi 1 o lo'o fa'aali atu ai suiga o tau o oloa ma auaunaga mai ia Mati 2023 e pau mai ia Mati 2024.

O 'oloa auina mai fafo ua fa'amauina le si'itia ai i le 3.7 pasene e mafua mai i le maualuga o tau na fa'amauina mo meaai, taavale, fuālaau ma meāfale

O 'oloa gaosi i totonu o le atunuu ua si'itia foi i le 2.4 pasene pe a faatusa i le masina o Mati o le tausaga ua mavae, ona o le maualuga o tau na fa'amauina mo meaai e maua i totonu o le atunuu e pei o kapisi saina, kukama, tamato ma popo.

Kalafi 1: Suiga o Fuafaatatau o Tau o Oloa ma Auaunaga
(Mati 2023 - Mati 2024)



Faamaumauga: Ofisa Fuainumera Faamauina

Table 1. CONSUMER PRICE INDEX.**(Base Period : Average Prices February 2016 = 100)**

Group	All Items	Food and Non Alcoholic Beverages	Alcoholic Beverages, Tobacco and Narcotics	Clothing and Footwear	Housing, Water, Electricity, Gas and other Fuels	Furnishings, Household Equipment, and Maintenance	Health	Transport	Communication	Recreation and Culture	Education	Restaurants	Miscellaneous goods and services
Weights	1000.0	403.7	128.4	21.2	119.6	30.8	4.6	148.5	51.5	6.1	19.7	22.4	43.5
Ave - 2020	106.6	110.4	120.0	93.5	89.6	98.1	99.2	104.4	104.2	88.5	114.9	109.4	98.8
Ave - 2021	109.9	114.1	121.6	98.9	92.4	98.9	105.7	111.7	107.1	88.2	109.9	111.2	97.2
Ave - 2022	122.0	131.8	122.8	108.3	93.1	105.0	101.9	131.0	124.5	91.0	109.4	126.2	102.1
Ave - 2023	131.6	152.7	123.8	110.4	93.9	108.2	98.4	131.1	132.0	92.8	97.4	140.0	111.2
2023													
March	129.8	149.0	125.5	109.9	94.2	106.4	97.6	128.0	132.0	93.3	96.3	140.1	110.9
April	131.8	154.0	123.7	110.6	94.1	106.5	97.6	129.2	132.0	95.6	96.3	140.1	111.1
May	131.5	152.3	123.8	110.8	93.4	106.7	97.6	132.2	132.0	92.3	96.3	140.1	111.8
June	133.9	157.3	122.4	111.0	96.0	106.8	98.3	134.0	132.0	92.3	96.3	140.1	111.5
July	134.0	159.5	123.2	111.0	93.0	108.8	98.3	129.1	132.0	91.2	96.3	140.1	113.3
August	132.8	156.8	123.2	110.9	92.8	108.6	96.0	128.8	132.0	90.7	96.3	141.9	113.0
September	131.8	153.2	123.6	111.3	93.1	109.8	97.1	130.5	132.0	91.8	96.3	141.9	113.1
October	132.3	152.4	124.3	111.4	93.9	109.9	99.3	135.3	132.0	92.2	96.3	141.9	112.2
November	132.4	151.1	124.4	111.3	94.8	110.9	99.3	138.4	132.0	94.5	96.3	141.9	112.1
December	132.0	153.2	124.2	111.3	93.4	111.4	99.3	131.5	132.0	92.8	96.3	141.9	111.5
2024													
January	133.4	156.6	124.4	111.4	92.9	113.0	105.5	130.8	133.7	98.2	96.3	141.9	111.0
February	133.5	157.4	124.7	110.3	92.8	111.8	111.3	128.9	133.7	94.8	96.3	141.9	112.4
March (P)	133.8	156.8	124.7	110.2	93.0	112.2	112.2	132.1	133.7	94.6	96.3	143.0	112.4
<u>Percentage Change (P)</u>													
Mar 2024													
over	3.1%	5.2%	-0.6%	0.3%	-1.3%	5.5%	14.9%	3.2%	1.3%	1.4%	0.0%	2.1%	1.4%
Mar 2023													
Mar 2024													
over	0.2%	-0.4%	0.0%	0.0%	0.2%	0.3%	0.8%	2.5%	0.0%	-0.1%	0.0%	0.7%	0.0%
Feb 2024													

Source : Samoa Bureau Statistics

(P) : Provisional figures

Table 2. ALL ITEMS UNDERLYING INDEX

(Base Period : Average Prices February 2016 = 100)

Group	All Items	Food and Non Alcoholic Beverages	Alcoholic Beverages, Tobacco and Narcotics	Clothing and Footwear	Housing, Water, Electricity, Gas and other Fuels	Furnishings, Household Equipment, and Maintenance	Health	Transport	Communication	Recreation and Culture	Education	Restaurants	Miscellaneous goods and services
<i>Weights</i>	586.7	345.3	<i>n.a</i>	21.2	24.2	30.8	3.5	26.4	51.5	5.6	12.3	22.4	43.5
Ave - 2020	106.6	109.9		93.5	93.7	98.1	98.9	110.1	104.2	87.6	120.6	109.4	98.8
Ave - 2021	110.1	114.8		98.9	94.5	98.9	107.5	113.6	107.1	87.3	112.7	111.2	97.2
Ave - 2022	122.9	130.1		108.3	110.2	105.0	102.5	115.5	124.5	90.4	111.9	126.2	102.1
Ave - 2023	135.4	146.9		110.4	113.3	108.2	97.8	125.1	132.0	92.2	111.9	140.0	111.2
2023													
March	134.5	146.0		109.9	114.3	106.4	96.9	117.7	132.0	92.8	111.9	140.1	110.9
April	135.0	146.7		110.6	114.2	106.5	96.9	119.2	132.0	95.3	111.9	140.1	111.1
May	135.2	146.5		110.8	113.9	106.7	96.9	124.3	132.0	91.7	111.9	140.1	111.8
June	137.7	150.0		111.0	125.8	106.8	97.7	124.3	132.0	91.7	111.9	140.1	111.5
July	138.2	151.1		111.0	111.3	108.8	97.7	130.1	132.0	90.6	111.9	140.1	113.3
August	136.7	148.6		110.9	111.2	108.6	94.6	130.1	132.0	90.0	111.9	141.9	113.0
September	135.5	146.4		111.3	111.2	109.8	96.1	129.3	132.0	91.2	111.9	141.9	113.1
October	135.8	147.0		111.4	111.0	109.9	99.0	129.3	132.0	91.6	111.9	141.9	112.2
November	135.1	145.5		111.3	110.3	110.9	99.0	131.0	132.0	94.1	111.9	141.9	112.1
December	136.7	148.3		111.3	110.4	111.4	99.0	130.9	132.0	92.2	111.9	141.9	111.5
2024													
January	138.6	151.1		111.4	110.3	113.0	107.3	130.9	133.7	98.0	111.9	141.9	111.0
February	140.9	155.0		110.3	109.8	111.8	115.0	129.8	133.7	94.3	111.9	141.9	112.4
March (P)	140.3	153.9		110.2	109.0	112.2	116.2	130.8	133.7	94.2	111.9	143.0	112.4
<u>Percentage Change (P)</u>													
Mar 2024 over Mar 2023	4.3%	5.4%		0.3%	-4.6%	5.5%	19.9%	11.1%	1.3%	1.5%	0.0%	2.1%	1.4%
Mar 2024 over Feb 2024	-0.4%	-0.7%		0.0%	-0.7%	0.3%	1.0%	0.8%	0.0%	-0.2%	0.0%	0.7%	0.0%

Source : Samoa Bureau Statistics

(P) : Provisional figures

Note : n.a. Not applicable

Table 3. AVERAGE RETAIL PRICES OF SELECTED COMMODITIES

Commodities	Wt	Unit	2023			2024			Mar-24	
			Jan	Feb	Mar	Jan	Feb	Mar	% chng from prev mnth	%chng from Mar 23
01 Food and non-alcoholic beverages										
Chicken leg quarters	62.19	kg	5.78	6.55	6.36	6.83	7.35	7.20	-2.1%	13.2%
Raw Sugar	21.27	kg	3.60	3.60	3.59	4.07	4.18	4.12	-1.5%	15.0%
Bread	17.20	loaf	1.84	1.85	1.85	1.97	1.97	1.95	-0.8%	5.4%
Corned Beef Oxford (a)	15.88	340 grms	10.13	10.13	10.33	10.98	10.98	10.98	0.0%	6.3%
Taro	15.17	kg	3.68	4.13	3.96	4.61	3.79	3.85	1.5%	-2.8%
Re-packed medium grain rice	13.38	kg	3.51	3.56	3.56	3.95	4.00	3.93	-2.0%	10.2%
Prepacked medium grain rice (a)	13.38	907 grms	2.95	3.05	3.05	3.42	3.58	3.42	-4.7%	12.0%
Bongo	10.18	20 grms	0.87	0.89	0.90	0.92	0.92	0.92	0.0%	2.2%
Keke Saina Biscuits (a)	9.21	pkt 10	7.21	7.25	7.25	7.53	7.50	7.58	1.1%	4.6%
Ice Cream (a)	9.17	2 ltr	19.25	19.25	19.25	19.73	19.73	19.87	0.7%	3.2%
Ramen	9.00	85 grms	1.32	1.37	1.37	1.43	1.41	1.46	3.1%	6.5%
Fish (Piece)	7.92	kg	31.45	29.72	31.25	37.62	33.50	31.25	-6.7%	0.0%
Butter	7.66	454 grms	18.83	18.83	18.97	20.11	20.11	19.96	-0.8%	5.2%
Round Pancake (a)	7.50	sml	0.20	0.20	0.20	0.20	0.20	0.20	0.0%	0.0%
Mutton Flaps	6.63	kg	25.77	26.30	25.68	22.13	22.46	23.03	2.6%	-10.3%
Canned fish betw een \$3.00 and \$3.99 N/Oi	6.37	425 grms	3.30	3.29	3.37	3.67	3.68	3.68	0.0%	9.2%
Canned fish \$4:00 or over N/Oil	6.37	425 grms	4.75	4.75	4.86	5.18	5.41	5.85	8.1%	20.4%
Canned fish betw een \$3.00 and \$3.99 N/Oi	6.37	425grms	3.35	3.35	3.41	3.26	3.34	3.30	-1.1%	-3.3%
Canned fish under \$3.00 in N/Oil	6.37	425 grms	2.77	2.77	2.77	2.92	2.97	2.93	-1.1%	6.0%
Turkey Wings	6.31	kg	16.64	16.21	16.36	14.02	14.51	14.51	0.0%	-11.3%
Fish (string)	5.98	kg	16.12	14.00	14.05	15.68	13.96	14.53	4.1%	3.4%
Fish (large)	5.98	kg	28.92	25.92	23.76	29.62	25.55	25.09	-1.8%	5.6%
Cooking vegetable oil (a)	5.89	ltr	10.05	9.71	8.81	7.03	7.03	6.91	-1.7%	-21.6%
Sausage beef	5.76	kg	14.70	14.73	15.19	15.58	15.58	15.58	0.0%	2.6%
Chinese Cabbage	5.53	kg	10.63	10.26	8.93	11.58	11.76	11.94	1.5%	33.6%
Eggs medium size	5.45	doz	8.02	8.42	8.12	8.05	8.09	7.97	-1.5%	-1.8%
Flour plain w hite	5.29	kg	3.37	3.37	3.59	3.33	3.25	3.42	5.3%	-4.7%
Onions	5.23	kg	5.46	5.79	5.54	6.33	6.19	5.66	-8.6%	2.2%
Milk Devondale	5.11	1tr	4.94	5.84	5.77	5.42	5.38	5.38	0.0%	-6.8%
Soft Drink Coke	5.07	600 mls	3.12	3.16	3.58	3.82	3.85	3.85	0.0%	7.6%
Soft Drink Taxi	5.07	330 mls	1.92	1.92	1.92	1.92	1.92	1.92	0.0%	0.0%
Milk Anchor	4.81	1tr	4.59	5.09	5.39	5.01	5.02	5.05	0.6%	-6.3%
Salted Beef	4.72	kg	23.59	23.69	24.36	23.55	23.15	23.15	0.0%	-5.0%
Canned fish Soifua in Tomato Sauce	4.47	425 grms	2.53	2.56	2.51	2.70	2.63	2.65	1.0%	5.5%
CCK Coffee	4.47	100 grms	3.94	3.94	4.20	4.56	4.64	4.64	0.0%	10.5%
Sky Flakes Biscuits	4.29	850 grms	19.63	19.63	19.51	21.01	21.01	21.01	0.0%	7.7%
Stew ing beef	4.20	kg	17.11	17.79	17.79	18.90	18.90	18.90	0.0%	6.3%

Koko Samoa	4.09	cup	20.68	25.44	26.52	22.74	24.39	25.16	3.1%	-5.1%
Corned Beef Pacific	3.64	340 grms	18.88	18.88	19.66	19.61	19.61	19.63	0.1%	-0.2%
Ramen kimchi (bow l)	3.40	86 grms	3.57	3.52	3.48	3.39	3.36	3.34	-0.5%	-4.1%
Soy Sauce Mushroom	3.25	750 grms	3.61	3.63	3.71	3.66	3.70	3.68	-0.5%	-0.7%
Pork Pig Trotter	3.10	kg	8.28	8.75	9.64	9.24	9.15	9.50	3.9%	-1.4%
Corned Beef Palm	3.01	340 grms	18.93	19.00	19.07	18.11	18.19	18.19	0.0%	-4.6%
Ripe Banana (a)	2.71	kg	3.65	4.48	4.22	4.58	4.32	4.09	-5.3%	-3.1%
Tang powder (a)	2.51	25 grms	0.60	0.60	0.57	0.59	0.59	0.59	0.0%	3.2%
Minties Pascall (a)	2.49	200 grms	16.50	16.50	16.50	12.50	12.50	12.50	0.0%	-24.2%
Potatoes	2.41	kg	6.64	6.52	5.88	6.25	6.36	6.24	-1.9%	6.0%
Green Banana	2.29	kg	1.50	1.34	1.40	1.58	1.44	1.55	7.5%	10.6%
Apple small	2.26	each	1.69	1.69	1.80	1.68	1.66	1.65	-0.6%	-8.1%
Mineral Water	2.25	bottle	1.88	1.88	1.97	1.91	1.97	1.97	0.0%	0.0%
Chocolate Cake (a)	2.15	sml	22.40	22.40	22.40	26.30	26.30	26.30	0.0%	17.4%
Cucumbers	2.12	kg	6.40	6.79	6.57	7.44	8.49	8.57	0.9%	30.4%
Instant Nescafe Coffee	2.02	50 grms	8.82	8.50	8.72	8.96	9.40	9.34	-0.6%	7.1%
Mutton Neck	1.93	kg	27.13	27.13	26.87	24.27	22.02	22.02	0.0%	-18.1%
Vermicelli Lungken	1.88	454 grms	4.80	4.84	4.68	4.78	4.71	4.65	-1.3%	-0.8%
Tomatoes	1.80	kg	19.98	21.84	23.51	24.95	27.89	30.20	8.3%	28.5%
Sausage Pork	1.68	kg	14.60	15.19	15.80	15.22	15.22	15.22	0.0%	-3.7%
Bell Tea Bags	1.62	150 grms	11.34	11.40	11.40	11.21	11.38	11.38	0.0%	-0.2%
Samco Twisties	1.40	20 grms	0.79	0.81	0.83	0.87	0.87	0.87	0.0%	5.2%
Matured husked Coconuts	1.30	kg	1.08	1.24	1.18	1.27	1.11	1.22	10.0%	3.2%
Matured Un husked Coconuts (a)	1.30	kg	0.76	0.73	0.67	0.93	0.85	0.87	1.6%	29.7%
Taamu	1.13	kg	21.03	5.04	16.60	10.61	4.65	5.49	18.0%	-66.9%
Round Cabbage Round	1.12	kg	12.59	12.99	13.52	13.08	13.95	14.53	4.1%	7.5%

02 Alcoholic beverages, tobacco and narcotics

Beer Vailima Lager	37.94	355 mls	3.80	3.80	3.80	3.80	3.80	3.80	0.0%	0.0%
Pall Mall Filter Cigarettes (Red)	24.29	20 rolls	14.60	14.60	14.60	15.00	15.20	15.20	0.0%	4.1%
Pall Mall Menthol Cigarettes (Green)	24.29	20 rolls	14.60	14.60	14.60	15.00	15.20	15.20	0.0%	4.1%
Beer Taula (a)	16.26	330 mls	3.73	3.80	4.26	4.35	4.23	4.23	0.0%	-0.9%
Tobacco w infield (a)	12.64	30 grms	15.00	15.00	15.00	10.48	10.48	10.48	0.0%	-30.2%
Vodka Niu Spirit (a)	3.76	Niu / 2 ltr	66.82	66.82	66.82	66.78	66.78	66.78	0.0%	0.0%
Whisky Jim Bean Spirit (a)	3.76	1ltr	93.75	93.13	94.63	104.75	104.63	104.63	0.0%	10.6%
Paper Cigarettes	3.61	50 sheets	1.70	1.70	1.70	1.80	1.80	1.80	0.0%	5.9%
Samoan kava	1.82	pkt	39.04	43.92	40.00	44.85	41.82	42.05	0.6%	5.1%

03 Clothing and footwear

Uniform le Faitaga College boys	4.28	size 8-10	38.33	37.67	38.33	37.67	37.67	37.67	0.0%	-1.7%
Uniform Pa'ave (a)	3.71	size 7	42.67	42.67	45.00	48.17	44.83	44.83	0.0%	-0.4%
Jandals soft	2.48	10.5 size	9.33	9.33	9.33	9.75	9.83	9.83	0.0%	5.4%
Puletasi mamanu palama (a)	2.35	medium	125.00	125.00	130.00	130.00	130.00	130.00	0.0%	0.0%
le solosolo cotton print	2.22	42 inch	11.92	12.03	12.40	11.87	11.87	11.87	0.0%	-4.3%
Cargo shorts (a)	1.76	38 size	93.00	93.00	93.00	93.00	93.00	93.00	0.0%	0.0%
Shirt short sleeves men Aloha shirt (a)	1.15	men / XL	58.10	58.10	59.48	59.98	59.98	59.98	0.0%	0.8%
Shirt long sleeves men	1.15	16.5 size	38.38	38.38	38.38	39.50	39.50	39.50	0.0%	2.9%
Shoes Nike Running shoes (a)	0.82	size 9	224.75	224.75	224.75	232.25	267.25	262.25	-1.9%	16.7%
le Faitaga	0.70	36/38 size	39.30	39.24	39.24	38.38	38.44	38.44	0.0%	-2.0%
Woman Nylon Panties	0.59	medium	4.42	4.42	4.42	4.25	4.25	4.25	0.0%	-3.8%

04 Housing, water, electricity, gas and other fuels

Electricity Cashpower	50.59	kwh	0.58	0.58	0.58	0.58	0.58	0.58	0.9%	0.9%
Reservoir treated Water	28.55	15-40 m3	1.34	1.34	1.34	1.34	1.34	1.34	0.0%	0.0%
Liquid gas	15.77	9kg	71.80	71.80	71.80	69.00	69.00	69.00	0.0%	-3.9%
Government house Rent	12.16	2 b/room	680.00	680.00	680.00	680.00	680.00	680.00	0.0%	0.0%
Kerosene	4.12	1 ltr	3.49	3.11	3.20	3.00	2.98	3.02	1.3%	-5.7%
Paint High gloss white	3.45	4 ltrs	81.15	79.42	85.17	87.17	83.08	83.08	0.0%	-2.4%
Paint Plus 2 plastic white	3.45	4 ltrs	50.80	52.40	53.40	54.40	56.40	54.60	-3.2%	2.2%
Cement NZ or Australia	0.78	40 kg	46.30	45.80	45.57	35.10	32.70	31.39	-4.0%	-31.1%
Dressed per Timber 2x4	0.71	meter	11.03	11.10	11.12	10.44	10.31	10.30	0.0%	-7.3%

05 Furnishings, household equipment and routine household maintenance

Washing powder (a)	6.27	200 grms	2.09	2.09	2.02	2.08	2.08	2.10	1.1%	3.8%
Washing Soap yellow	5.90	bar	3.22	3.28	3.35	3.61	3.45	3.45	0.0%	3.3%
Mosquito coil	4.36	10 coil	1.55	1.55	1.55	1.50	1.45	1.45	0.0%	-6.5%
Mattress single Futon (a)	3.81	4 inch	146.50	146.50	147.33	216.33	215.50	215.50	0.0%	46.3%
Babysitting live-in (a)	3.78	1 week	142.50	142.50	142.50	142.50	142.50	142.50	0.0%	0.0%
Refridgerator common brand	2.49	331-335 ltr	2362.52	2362.52	2362.52	2343.32	2601.32	2601.32	0.0%	10.1%
Gold Power washing powder	1.68	180 grms	1.67	1.67	1.67	1.67	1.67	1.67	0.0%	0.0%
Eveready AA size Batteries	1.20	AA 1/4 size	3.70	3.90	4.01	4.27	4.27	4.27	0.0%	6.4%
Bush knife tramontina	0.88	24 inch	30.74	30.49	30.11	32.24	32.49	32.74	0.8%	8.7%
Kerosene stove	0.16	2 burner	112.50	112.50	137.25	129.75	129.75	129.75	0.0%	-5.5%
Tumblers Glass basic no design (a)	0.11	medium	16.66	15.66	15.96	16.04	16.04	16.04	0.0%	0.5%
Sefe 3 shelves	0.11	48*48 inch	722.50	722.50	760.00	810.00	810.00	810.00	0.0%	6.6%
Clothing chest flat top	0.01	medium	607.50	607.50	757.50	770.00	770.00	770.00	0.0%	1.7%

06 Health

Amoxicillin 500mg tablets (a)	2.46	20 tablets	7.90	7.90	7.73	8.27	8.67	8.83	1.9%	14.2%
Hospital Charge	1.15	per night	22.50	22.50	22.50	22.50	22.50	22.50	0.0%	0.0%
Private Doctor Consultation fee	1.04	per adult	30.00	30.00	30.00	30.00	30.00	30.00	0.0%	0.0%

07 Transport

Petrol	60.80	1 ltr	3.35	3.03	3.20	3.15	3.12	3.24	3.8%	1.2%
Taxi Fare P.O to Motootua Hosp	8.15	per trip	4.80	4.80	4.80	4.80	4.80	4.80	0.0%	0.0%
Taxi Fares P.O to Malua	8.15	per trip	31.30	31.30	31.30	31.30	31.30	31.30	0.0%	0.0%
Taxi Fares P.O to Falefa	8.15	per trip	43.20	43.20	43.20	43.20	43.20	43.20	0.0%	0.0%
Air Fares Faleolo-Pago-Faleolo	6.84	return trip	676.02	676.02	676.02	754.61	754.61	754.61	0.0%	11.6%
Air Fares Apia Auckland Apia	6.77	1 month	1454.44	1549.44	1483.44	1760.94	1366.04	1519.21	11.2%	2.4%
Car Registration (private car)	5.67	1501-2000 cc	256.00	256.00	256.00	281.60	281.60	281.60	0.0%	10.0%
Used Car Toyota Corolla (a)	5.08	1500 cc	23500.00	23500.00	23500.00	28333.33	27666.67	27666.67	0.0%	17.7%
Used Car Toyota Camry (a)	5.08	1500 cc	18000.00	18000.00	18000.00	18000.00	18000.00	18000.00	0.0%	0.0%
Diesel	4.83	1 ltr	3.96	3.52	3.56	3.38	3.32	3.43	3.2%	-3.7%
Bus Fares Apia Motootua Hosp	3.49	one adult	1.30	1.30	1.30	1.20	1.20	1.20	0.0%	-7.7%
Bus Fares Apia Malua	3.49	one adult	2.60	2.60	2.60	2.60	2.60	2.60	0.0%	0.0%
Bus Fares Apia Falefa	3.49	one adult	3.70	3.70	3.70	3.70	3.70	3.70	0.0%	0.0%
Labour charge car repair	3.38	min charge	67.00	67.00	67.00	67.00	67.00	67.00	0.0%	0.0%
New Pickup Ford Ranger Double cab (a)	3.25	3200 cc	94000.00	94000.00	94000.00	125000.00	125000.00	125000.00	0.0%	33.0%
New Pickup Toyota Hilux Double cab (a)	3.25	3200 cc	105000.00	105000.00	105000.00	118000.00	118000.00	118000.00	0.0%	12.4%
Used Mini van Toyota Noah (a)	2.42	2000 cc	22000.00	22000.00	22000.00	23666.67	23333.33	24000.00	2.9%	9.1%
Used Mini van Toyota Voxy (a)	2.42	2000 cc	22000.00	22000.00	22000.00	24166.67	23833.33	24833.33	4.2%	12.9%
Car Tyre	1.49	195/70 R(14)	197.50	197.50	212.50	215.00	215.00	215.00	0.0%	1.2%
Boat Fares Mulifanua Salelologa	1.14	one way	10.00	10.00	10.00	10.00	10.00	10.00	0.0%	0.0%
Boat Fares Apia Pago Apia	1.14	min charge	120.00	120.00	120.00	120.00	120.00	140.00	16.7%	16.7%

08 Communication

Calling per minute Rate cell phone (a)	10.02	per minute	0.55	0.55	0.55	0.59	0.59	0.59	0.0%	7.3%
Internet data bundles per mb Rate (a)	10.02	per mb	0.33	0.33	0.33	0.33	0.33	0.33	0.0%	0.0%
Calling per minute Rate cell phone (a)	10.02	per minute	0.49	0.49	0.49	0.49	0.49	0.49	0.0%	0.0%
Internet data bundles per mb Rate (a)	10.02	per mb	0.33	0.33	0.33	0.33	0.33	0.33	0.0%	0.0%
Telephone Rental	3.87	1month	24.15	24.15	24.15	24.15	24.15	24.15	0.0%	0.0%
Prepaid Internet	3.06	30 mins	5.80	5.80	5.80	5.80	5.80	5.80	0.0%	0.0%
Telephone call NZ	1.50	3 mins	2.37	2.37	2.37	2.37	2.37	2.37	0.0%	0.0%
Telephone call USA	1.50	3 mins	2.97	2.97	2.97	2.97	2.97	2.97	0.0%	0.0%
Telephone call local	1.50	1min	0.10	0.10	0.10	0.10	0.10	0.10	0.0%	0.0%

09 Recreation and culture

Television LCD 32" (a)	2.30	LCD 32"	832.83	832.83	832.83	840.67	730.67	737.38	0.9%	-11.5%
Exercise Book w arwick	1.44	1B4	1.47	1.47	1.47	1.72	1.72	1.72	0.0%	17.0%
Laptop (a)	1.33	each	3597.80	3597.80	3597.80	3719.83	3719.83	3669.00	-1.4%	2.0%
Weedkiller Graxomone/Agriquat (a)	0.56	1ltr	51.67	51.67	51.67	46.67	46.67	46.67	0.0%	-9.7%
Cinema Admission	0.41	ticket	15.00	15.00	15.00	15.00	15.00	15.00	0.0%	0.0%
New s Paper Samoa Observer	0.01	each	2.50	2.50	2.50	2.75	2.88	2.88	0.0%	15.0%
New s Paper New sline	0.01	each	2.50	2.50	2.50	2.50	2.50	2.50	0.0%	0.0%

10 Education

Fees Primary PTA/registration fees (a)	7.23	Year 6	72.50	72.50	72.50	72.50	72.50	72.50	0.0%	0.0%
Fees Secondary PTA/registration fees (a)	5.11	Year 10	58.00	58.00	58.00	58.00	58.00	58.00	0.0%	0.0%
Fees Tertiary NUS registration School Fees	3.79	registration	322.00	122.00	122.00	122.00	122.00	122.00	0.0%	0.0%
Fees Secondary Y Examination Fees (a)	3.61	Y12-13	25.50	25.50	25.50	25.50	25.50	25.50	0.0%	0.0%

11 Restaurants and hotels

Fish & Chip Meal	7.79	1serve	11.58	11.58	11.58	11.58	11.58	11.83	2.2%	2.2%
Curry & Chopsuey Meal	4.87	1serve	5.00	5.00	5.33	5.33	5.33	5.33	0.0%	0.0%
Chicken & Chips Meal (a)	4.87	1serve	12.14	12.14	13.57	13.57	13.57	13.64	0.5%	0.5%
Steam rice & chicken Meal (a)	4.87	1serve	6.67	6.67	6.67	7.00	7.00	7.00	0.0%	5.0%

12 Miscellaneous goods and services

Toilet Paper Sofan deluxe ply	8.52	250 sheets	1.20	1.20	1.26	1.18	1.25	1.25	0.0%	-1.0%
Hair Gel	4.59	1124 ml	5.57	5.57	5.57	5.61	5.61	5.61	0.0%	0.8%
Storage of remains (a)	4.41	per day	60.00	60.00	66.67	66.67	66.67	66.67	0.0%	0.0%
Basic Casket (a)	4.41	each	1966.67	1966.67	1966.67	1966.67	1966.67	1966.67	0.0%	0.0%
Standard Embalming (a)	4.41	1person	1500.00	1500.00	1525.00	1675.00	1675.00	1675.00	0.0%	9.8%
Toilet soap Protex (a)	4.38	90g	2.04	2.05	2.05	2.05	2.03	2.03	0.0%	-0.9%
Diapers Soft Love (a)	4.19	5kg-10kg	7.56	7.56	7.56	7.44	7.39	7.39	0.0%	-2.3%
Toilet soap Lux	3.87	85g	1.18	1.20	1.33	1.35	1.39	1.38	-0.9%	3.8%
Paste Colgate regular flavour	3.43	140g	4.86	4.86	4.99	5.07	5.02	5.08	1.1%	1.8%
Diapers Huggies	1.30	16kg & over	39.72	39.72	39.72	42.96	43.32	43.51	0.4%	9.5%

Source : Samoa Bureau Statistics

(a) : New commodity from February 2016

(P) : Provisional figures

Note : Please note unit of conversion was in pound's (lb's) but been converted into kilograms (kg)

Table 4. IMPORTED GOODS COMPONENT OF THE CONSUMER PRICE INDEX
(Base Period : Average Prices February 2016 = 100)

	All Items	Food and Non Alcoholic Beverages	Alcoholic Beverages, Tobacco and Narcotics	Clothing and Footwear	Housing, Water, Electricity, Gas and other Fuels	Furnishings, Household Equipment and Maintenance	Health	Transport	Communication	Recreation and Culture	Education	Restaurants	Miscellaneous goods and services
Weights	494.7	269.1	23.8	15.2	28.3	26.9	2.5	88.6	n.a	5.6	n.a	n.a	34.7
<i>Ave - 2020</i>	107.9	112.2	117.1	93.2	96.0	97.7	95.8	107.4		87.6			98.0
<i>Ave - 2021</i>	114.0	118.4	118.8	100.9	99.1	98.7	108.0	119.9		87.3			95.9
<i>Ave - 2022</i>	131.5	136.3	119.2	114.6	121.9	105.7	100.9	149.1		90.4			102.0
<i>Ave - 2023</i>	141.3	154.7	108.5	117.0	123.2	109.3	94.3	145.2		92.2			111.7
2023													
March	140.7	154.0	119.9	116.6	124.8	107.2	92.9	141.2		92.8			111.9
April	141.1	154.6	109.9	117.3	124.7	107.3	92.9	143.3		95.3			112.1
May	141.5	154.5	111.0	117.5	121.5	107.6	92.9	146.4		91.7			113.1
June	144.2	158.4	102.4	117.8	131.7	107.6	94.1	148.7		91.7			112.7
July	143.2	159.8	102.3	117.8	118.7	109.9	94.1	142.4		90.6			113.4
August	140.8	156.4	103.2	117.7	117.9	109.7	89.7	140.1		90.0			113.0
September	140.1	153.4	103.2	118.0	119.3	111.0	91.8	143.8		91.2			113.1
October	142.1	154.1	103.3	117.8	122.7	111.2	96.0	152.2		91.6			112.0
November	142.0	152.0	103.8	117.8	126.6	112.3	96.0	155.7		94.1			111.9
December	142.0	155.8	103.8	117.8	121.5	112.9	96.0	146.0		92.2			111.1
2024													
January	143.4	159.3	104.0	117.7	119.6	114.7	107.7	142.9		98.0			110.4
February	145.9	164.4	104.0	116.1	119.0	113.4	118.8	141.6		94.3			112.3
March (P)	145.9	163.0	104.0	116.0	118.7	113.8	120.4	145.9		94.2			112.3
<u>Percentage Change (P)</u>													
Mar 2024 over Mar 2023	3.7%	5.8%	-13.3%	-0.5%	-4.8%	6.2%	29.6%	3.4%		1.5%			0.4%
Mar 2024 over Feb 2024	0.0%	-0.8%	0.0%	-0.1%	-0.2%	0.4%	1.3%	3.0%		-0.2%			0.0%

Samoa Bureau Statistics

(P) : Provisional figures

Note : n.a. Not applicable

Table 5. IMPORTED ITEMS UNDERLYING INDEX

(Base Period : Average Prices February 2016 = 100)

	All Items	Food and Non Alcoholic Beverages	Alcoholic Beverages, Tobacco and Narcotics	Clothing and Footwear	Housing, Water , Electricity, Gas and other Fuels	Furnishings, Household Equipment and Maintenance	Health	Transport	Communication	Recreation and Culture	Education	Restaurants	Miscellaneous goods and services
Weights	401.2	269.1	n.a	15.2	24.2	26.9	2.5	23.0	n.a	5.6	n.a	n.a	34.7
Ave - 2020	107.6	112.2		93.2	93.7	97.7	95.8	110.4		87.6			98.0
Ave - 2021	112.3	118.4		100.9	94.5	98.7	108.0	114.4		87.3			95.9
Ave - 2022	126.8	136.3		114.6	110.2	105.7	100.9	115.7		90.4			102.0
Ave - 2023	141.1	154.7		117.0	113.3	109.3	94.3	126.7		92.2			111.7
2023													
March	140.1	154.0		116.6	114.3	107.2	92.9	118.2		92.8			111.9
April	140.7	154.6		117.3	114.2	107.3	92.9	119.9		95.3			112.1
May	141.0	154.5		117.5	113.9	107.6	92.9	125.8		91.7			113.1
June	144.4	158.4		117.8	125.8	107.6	94.1	125.8		91.7			112.7
July	145.0	159.8		117.8	111.3	109.9	94.1	132.5		90.6			113.4
August	142.6	156.4		117.7	111.2	109.7	89.7	132.5		90.0			113.0
September	140.7	153.4		118.0	111.2	111.0	91.8	131.5		91.2			113.1
October	141.1	154.1		117.8	111.0	111.2	96.0	131.5		91.6			112.0
November	139.9	152.0		117.8	110.3	112.3	96.0	133.4		94.1			111.9
December	142.4	155.8		117.8	110.4	112.9	96.0	133.3		92.2			111.1
2024													
January	144.9	159.3		117.7	110.3	114.7	107.7	133.4		98.0			110.4
February	148.2	164.4		116.1	109.8	113.4	118.8	132.1		94.3			112.3
March (P)	147.3	163.0		116.0	109.0	113.8	120.4	133.3		94.2			112.3
<u>Percentage Change (P)</u>													
Mar 2024 over Mar 2023	5.2%	5.8%		-0.5%	-4.6%	6.2%	29.6%	12.7%		1.5%			0.4%
Mar 2024 over Feb 2024	-0.6%	-0.8%		-0.1%	-0.7%	0.4%	1.3%	0.9%		-0.2%			0.0%

Source : Samoa Bureau Statistics

(P) : Provisional figures

Note : n.a. Not applicable

Table 6. LOCAL GOODS COMPONENT OF THE CONSUMER PRICE INDEX

(Base Period : Average Prices February 2016 = 100)

Group	All Items	Food and Non Alcoholic Beverages	Alcoholic Beverages, Tobacco and Narcotics	Clothing and Footwear	Housing, Water , Electricity, Gas and other Fuels	Furnishings, Household Equipment and Maintenance	Health	Transport	Communication	Recreation and Culture	Education	Restaurants	Miscellaneous goods and services
Weights	505.3	134.6	104.6	6.0	91.3	3.9	2.2	59.9	51.5	0.4	19.7	22.4	8.8
Ave - 2020	105.3	106.8	120.7	94.2	87.6	100.3	103.0	100.1	104.2	100.0	114.9	109.4	102.3
Ave - 2021	105.9	105.6	122.2	93.8	90.3	100.3	103.0	99.6	107.1	100.0	109.9	111.2	102.3
Ave - 2022	112.6	122.8	123.6	92.1	84.2	100.6	103.0	104.3	124.5	100.0	109.4	126.2	102.3
Ave - 2023	122.2	148.8	127.3	93.4	84.8	101.1	103.0	110.2	132.0	100.0	97.4	140.0	109.2
2023													
March	119.1	139.0	126.7	93.0	84.7	101.1	103.0	108.4	132.0	100.0	96.3	140.1	107.0
April	122.8	152.7	126.8	93.6	84.7	101.1	103.0	108.4	132.0	100.0	96.3	140.1	107.0
May	121.8	147.9	126.7	93.6	84.7	101.1	103.0	111.3	132.0	100.0	96.3	140.1	107.0
June	123.9	155.1	126.9	93.6	85.0	101.2	103.0	112.1	132.0	100.0	96.3	140.1	107.0
July	124.9	158.9	128.0	93.6	85.0	101.2	103.0	109.4	132.0	100.0	96.3	140.1	113.0
August	125.0	157.5	127.7	93.6	85.0	101.2	103.0	112.2	132.0	100.0	96.3	141.9	113.0
September	123.6	152.7	128.2	94.2	85.0	101.1	103.0	110.8	132.0	100.0	96.3	141.9	113.0
October	122.7	148.9	129.0	95.1	85.0	101.1	103.0	110.4	132.0	100.0	96.3	141.9	113.0
November	123.1	149.4	129.1	94.7	85.0	101.3	103.0	112.8	132.0	100.0	96.3	141.9	113.0
December	122.3	148.0	128.8	94.7	84.7	101.4	103.0	109.9	132.0	100.0	96.3	141.9	113.0
2024													
January	123.7	151.2	129.0	95.1	84.7	101.4	103.0	112.8	133.7	100.2	96.3	141.9	113.0
February	121.4	143.5	129.5	95.5	84.7	101.4	103.0	109.9	133.7	100.4	96.3	141.9	113.0
March (P)	122.0	144.4	129.5	95.5	85.0	101.4	103.0	111.5	133.7	100.4	96.3	143.0	113.0
<u>Percentage Change (P)</u>													
Mar 2024 over Mar 2023	2.4%	3.9%	2.1%	2.7%	0.4%	0.3%	0.0%	2.9%	1.3%	0.4%	0.0%	2.1%	5.6%
Mar 2024 over Feb 2024	0.4%	0.6%	0.0%	0.0%	0.4%	0.0%	0.0%	1.4%	0.0%	0.0%	0.0%	0.7%	0.0%

Source : Samoa Bureau Statistics

(P) : Provisional figures

Table 7. LOCAL ITEMS UNDERLYING INDEX

(Base Period : Average Prices February 2016 = 100)

Group	All Items	Food and Non Alcoholic Beverages	Alcoholic Beverages, Tobacco and Narcotics	Clothing and Footwear	Housing, Water , Electricity, Gas and other Fuels	Furnishings, Household Equipment and Maintenance	Health	Transport	Communication	Recreation and Culture	Education	Restaurants	Miscellaneous goods and services
Weights	185.5	76.1	n.a	6.0	n.a	3.9	1.0	3.4	51.5	n.a	12.3	22.4	8.8
Ave - 2020	104.6	101.9		94.2		100.3	106.3	108.6	104.2		120.6	109.4	102.3
Ave - 2021	105.1	102.1		93.8		100.3	106.3	108.6	107.1		112.7	111.2	102.3
Ave - 2022	114.3	108.1		92.1		100.6	106.3	114.4	124.5		111.9	126.2	102.3
Ave - 2023	123.1	119.5		93.4		101.1	106.3	114.4	132.0		111.9	140.0	109.2
2023													
March	122.3	117.9		93.0		101.1	106.3	114.4	132.0		111.9	140.1	107.0
April	122.6	118.6		93.6		101.1	106.3	114.4	132.0		111.9	140.1	107.0
May	122.4	118.2		93.6		101.1	106.3	114.4	132.0		111.9	140.1	107.0
June	123.2	120.1		93.6		101.2	106.3	114.4	132.0		111.9	140.1	107.0
July	123.6	120.4		93.6		101.2	106.3	114.4	132.0		111.9	140.1	113.0
August	124.1	120.9		93.6		101.2	106.3	114.4	132.0		111.9	141.9	113.0
September	124.4	121.6		94.2		101.1	106.3	114.4	132.0		111.9	141.9	113.0
October	124.5	121.8		95.1		101.1	106.3	114.4	132.0		111.9	141.9	113.0
November	124.6	122.2		94.7		101.3	106.3	114.4	132.0		111.9	141.9	113.0
December	124.4	121.6		94.7		101.4	106.3	114.4	132.0		111.9	141.9	113.0
2024													
January	125.0	121.8		95.1		101.4	106.3	114.4	133.7		111.9	141.9	113.0
February	125.0	121.8		95.5		101.4	106.3	114.4	133.7		111.9	141.9	113.0
March (P)	125.0	121.6		95.5		101.4	106.3	114.4	133.7		111.9	143.0	113.0
<u>Percentage Change (P)</u>													
Mar 2024													
over	2.2%	3.2%		2.7%		0.3%	0.0%	0.0%	1.3%		0.0%	2.1%	5.6%
Mar 2023													
Mar 2024													
over	0.0%	-0.2%		0.0%		0.0%	0.0%	0.0%	0.0%		0.0%	0.7%	0.0%
Feb 2024													

Source : Samoa Bureau Statistics

(P) : Provisional figures

Note : n.a. Not applicable

Table 8. CONSUMER PRICE INDEX (AVERAGE ANNUAL INFLATION RATE).

(Base Period : Average Prices February 2016 = 100)

	All Items	Food and Non Alcoholic Beverages	Alcoholic Beverages, Tobacco and Narcotics	Clothing and Footwear	Housing, Water, Electricity, Gas and other Fuels	Furnishings, Household Equipment, and Maintenance	Health	Transport	Communication	Recreation and Culture	Education	Restaurants	Miscellaneous goods and services
Weights	1000.0	403.7	128.4	21.2	119.6	30.8	4.6	148.5	51.5	6.1	19.7	22.4	43.5
2019	1.0	1.0	4.1	-1.6	4.4	-1.6	3.1	-3.2	0.9	-4.2	2.8	4.4	0.0
2020	-1.6	-1.5	2.7	-0.3	-5.7	1.8	-0.9	-6.1	0.0	-0.3	1.2	5.9	1.0
2021	3.1	3.4	1.3	5.8	3.1	0.9	6.5	7.0	2.8	-0.3	-4.3	1.7	-1.6
2022	11.0	15.5	1.0	9.5	0.8	6.2	-3.6	17.3	16.2	3.2	-0.4	13.5	5.0
2023	7.9	15.9	0.8	1.9	0.8	3.1	-3.4	0.0	6.0	1.9	-11.0	10.9	8.9
2023													
March	11.5	16.9	1.3	5.5	0.6	6.5	-5.6	15.6	16.8	3.4	-2.0	15.7	7.7
April	11.7	17.7	1.4	4.3	0.5	6.5	-5.4	14.6	17.0	3.2	-3.0	16.7	8.4
May	12.0	18.5	1.4	3.0	0.3	6.6	-4.5	13.9	17.2	3.0	-4.0	17.7	9.0
June	12.0	19.1	1.3	1.9	0.8	5.9	-3.5	12.0	17.4	2.8	-5.0	17.1	9.4
July	11.5	19.0	1.2	1.8	1.1	5.3	-3.9	9.5	14.8	2.6	-6.0	16.4	9.7
August	10.3	18.2	1.1	1.7	1.1	4.6	-5.0	5.5	12.3	2.1	-7.0	15.9	9.7
September	9.1	16.6	0.9	1.7	1.3	4.1	-5.1	3.0	9.9	1.7	-8.0	14.6	9.7
October	8.3	15.5	0.9	1.6	1.8	3.4	-4.4	1.7	8.4	2.1	-9.0	13.5	9.6
November	8.0	15.5	0.8	1.8	1.3	3.1	-3.9	0.7	7.2	2.1	-10.0	12.2	9.3
December	7.9	15.9	0.8	1.9	0.8	3.1	-3.4	0.0	6.0	1.9	-11.0	10.9	8.9
2024													
January	7.3	15.1	0.7	2.1	0.3	3.2	-2.4	-0.8	5.0	1.9	-12.0	10.2	8.4
February	6.6	13.7	0.7	2.5	-0.1	3.2	-0.7	-1.0	4.0	1.7	-11.1	9.4	8.0
March (P)	5.9	12.5	0.4	2.4	-0.5	3.4	0.8	-1.2	3.0	1.7	-10.2	8.1	7.1

Source : Samoa Bureau Statistics

(P) : Provisional figures

Table 9 Consumer Price Index (Percentage change and Average Annual Inflation)

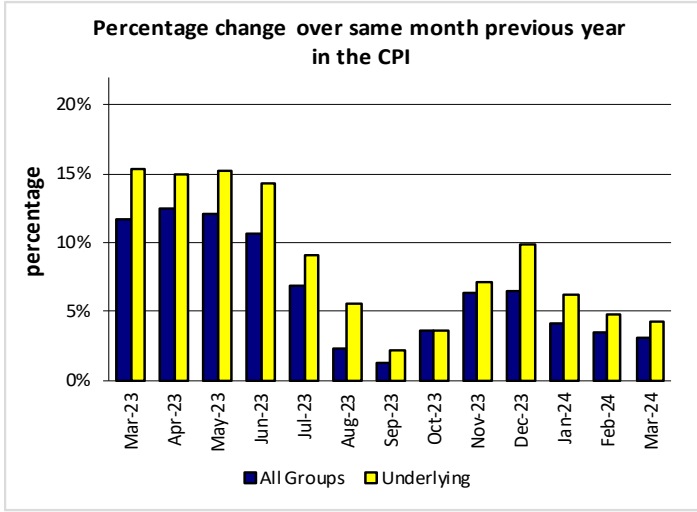
(Base Period: Average Prices February 2016 = 100)

	CPI ALL ITEMS	Percentage change over previous month	Last 12 months over previous 12 months	UNDERLYING ALL ITEMS	Percentage change over previous month	Last 12 months over previous 12 months	LOCAL COMPONENT	Percentage change over previous month	Last 12 months over previous 12 months	IMPORTED COMPONENT	Percentage change over previous month	Last 12 months over previous 12 months
2019	108.3	-	1.0	107.2	-	0.5	105.5	-	2.8	111.1	-	-0.7
2020	106.6	-	-1.6	106.6	-	-0.5	105.3	-	-0.2	107.9	-	-2.9
2021	109.9	-	3.1	110.1	-	3.2	105.9	-	0.6	114.0	-	5.7
2022	122.0	-	11.0	122.9	-	11.6	112.6	-	6.3	131.5	-	15.3
2023	131.6	-	7.9	135.4	-	10.2	122.2	-	8.5	141.3	-	7.4
2023												
March	129.8	0.6	11.5	134.5	0.1	12.9	119.1	0.9	7.5	140.7	0.4	15.2
April	131.8	1.6	11.7	135.0	0.4	13.4	122.8	3.1	8.2	141.1	0.2	15.1
May	131.5	-0.2	12.0	135.2	0.1	13.9	121.8	-0.8	8.7	141.5	0.3	15.0
June	133.9	1.8	12.0	137.7	1.9	14.2	123.9	1.8	9.2	144.2	1.9	14.5
July	134.0	0.0	11.5	138.2	0.4	13.7	124.9	0.8	9.4	143.2	-0.7	13.3
August	132.8	-0.9	10.3	136.7	-1.1	12.9	125.0	0.0	9.3	140.8	-1.6	11.2
September	131.8	-0.8	9.1	135.5	-0.9	11.5	123.6	-1.1	9.0	140.1	-0.5	9.2
October	132.3	0.4	8.3	135.8	0.2	10.4	122.7	-0.7	8.9	142.1	1.5	7.8
November	132.4	0.1	8.0	135.1	-0.6	10.1	123.1	0.3	8.9	142.0	-0.1	7.3
December	132.0	-0.3	7.9	136.7	1.2	10.2	122.3	-0.7	8.5	142.0	0.0	7.4
2024												
January	133.4	1.1	7.3	138.6	1.4	9.7	123.7	1.1	8.0	143.4	1.0	6.7
February	133.5	0.1	6.6	140.9	1.6	8.8	121.4	-1.8	7.5	145.9	1.7	5.9
March (P)	133.8	0.2	5.9	140.3	-0.4	7.9	122.0	0.4	6.9	145.9	0.0	5.1

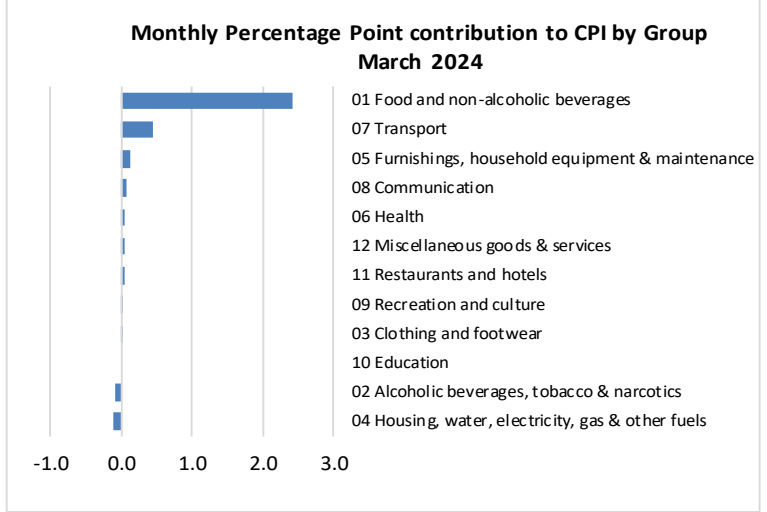
Source : Samoa Bureau Statistics

(P) : Provisional figures

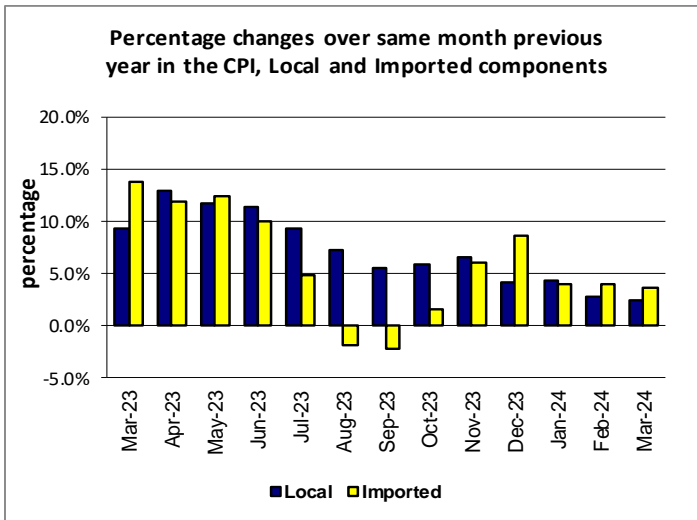
Graph.5



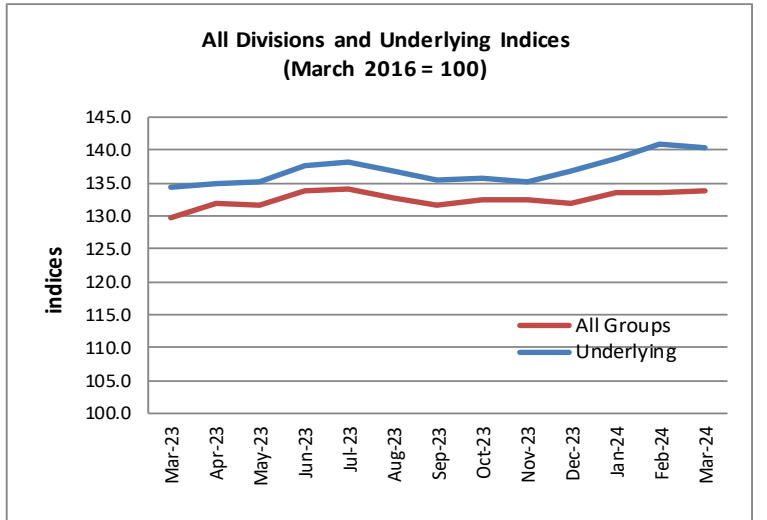
Graph.6



Graph.7



Graph.8



Graph.9

