

SAMOA BUREAU OF STATISTICS

CONSUMER PRICE INDEX APRIL 2024

Key findings:

The Consumer Price Index for April 2024 increased by 1.9 percent compared to the same month of the previous year.

- The Health index increased by 14.9 percent.
- The Furnishings, Household equipment and Maintenance index increased by 7.4 percent.
- The Transport index increased by 3.5 percent.

The Average Annual Inflation for the year ended April 2024 was 5.1 percent.

The CPI rose 0.4 percent from March 2024.

SUMMARY

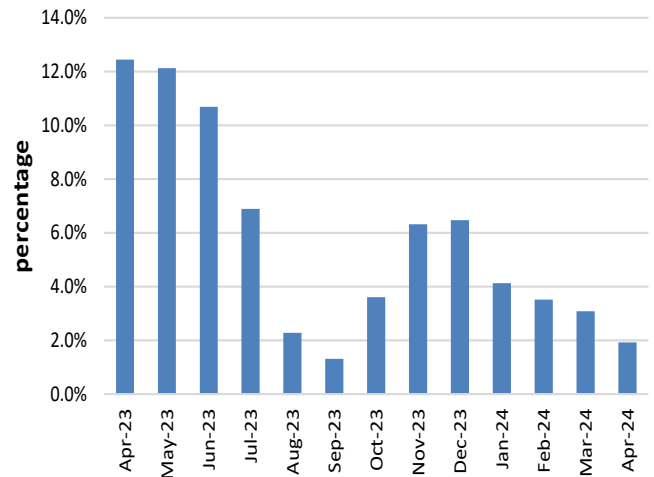
The Consumer Price Index (CPI) for April 2024 rose 1.9 percent compared to April 2023. This was mainly influenced by higher prices for medicine, household furniture, new cars and boat fares to Pago Pago.

When compared to the previous month, the CPI went up by 0.4 percent. Graph 1 shows the percentage changes over the same month of the previous year in the CPI by all Divisions from April 2023 to April 2024.

The Imported goods component increased by 3.7 percent mainly due to higher prices of food items, medicine, household furniture and new cars.

The Local goods component on the other hand declined by 0.1 percent when compared to the same month last year due to the lower prices of local food products such as taro, fresh fish, green banana and ta'amu.

Graph 1: Current month over same month previous year, percentage change in the CPI by All Items (Apr 2023 - Apr 2024)



Source: Samoa Bureau of Statistics

Total All Divisions Contribution

As shown in Graph 2, Food & Non-Alcoholic Beverages was the largest contributor to the 1.9 percent rise in the CPI in April 2024, with a contribution of 1.0 percentage points to the overall increase in April 2024. The most significant drivers of this within the group were chicken leg quarter (up 12.9%), sugar (up 15.3%), rice prepacked (up 12.0%), chocolate cake (up 17.4%), local coffee (up 10.5%), koko Samoa (up to 13.1%), Chinese cabbage (up 15.1%), cucumber (up 36.4%), tomato (up 56.9%) and coconut (up 16.7%).

Transport was the next largest contributor with a contribution of 0.5 percentage point, increasing 3.5 percent compared to April 2023. This was mainly influenced by the increase in prices of a new double cab pickup (up 22.7.0%), used mini vans (up 13.0%) and return boat fare to Pago Pago (up 16.7%).

Furnishings, household equipment and Maintenance contributed 0.2 percentage-point, increasing 8.3 percent when compared with April 2023 as a result of the increase in the price of mattress (up 46.3%). Alcoholic beverages, tobacco & narcotics contributed 0.1 percentage-point, increasing 0.8 percent when compared with April 2023 as a result of the increase in the price of spirit (up 10.8%).

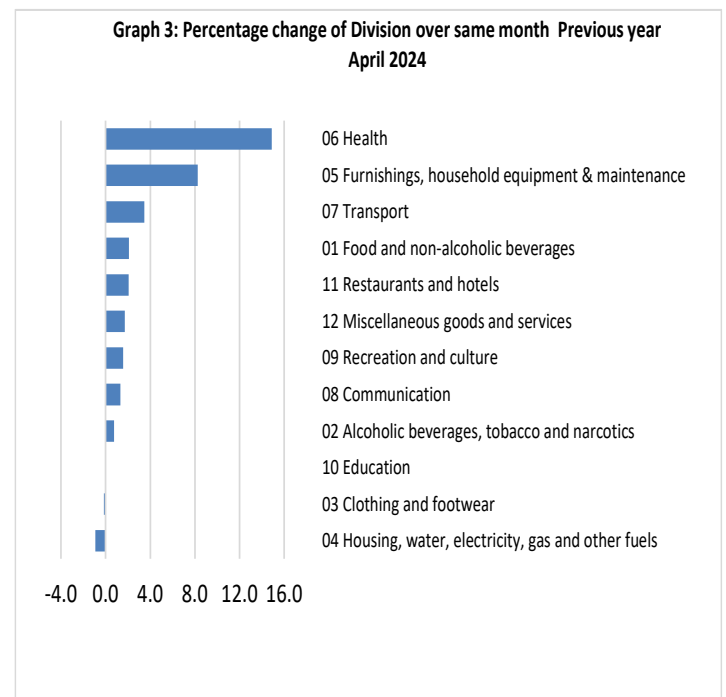
Communication contributed 0.1 percentage point, increasing 1.3 percentage, while Miscellaneous goods and services also contributed 0.1 percentage-point to the rise in CPI due to the increase in price of standard embalming and diapers, as well as Health also contributed 0.1 percentage-point, increasing 14.9 percent when compared to April 2023 respectively.

Consumer Price Index (% Change)

Graph 3 shows the percentage change for all Divisions (groups) in April 2024 in comparison to April 2023. Health had the largest increase of 14.9%. Furnishings household equipment & Maintenance rose 7.4% followed by Transport which rose 3.5%. Food & Non-Alcoholic and Restaurants both increased by 2.1% each respectively.

Other groups such as Miscellaneous, Recreation & Culture, Communication and Alcoholic beverages, tobacco & narcotics indices recorded increases of 1.7, 1.6, 1.3, and 0.8 percent respectively.

On the other hand, Housing, water, electricity, gas & other fuels and Clothing & Footwear declined by 1.2% and 0.2% while the Education index revealed no change.



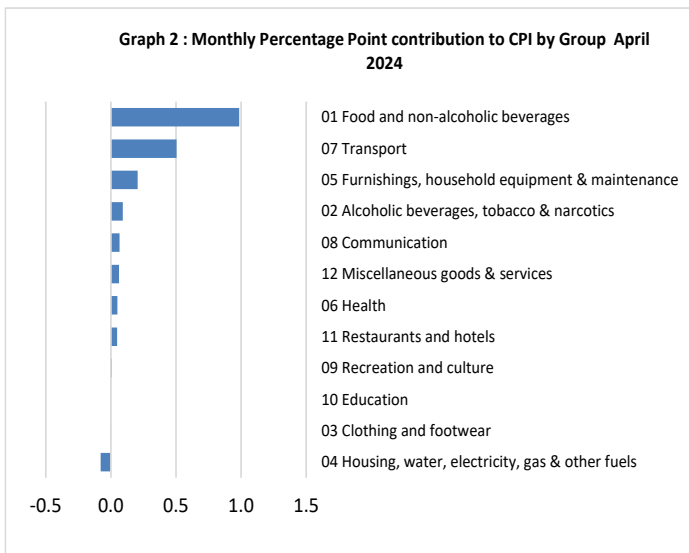
Source: Samoa Bureau of Statistics

Imported Goods Component

The Imported goods component of the CPI registered an increase of 3.7 percent when compared to the same month last year. This was mainly driven by higher prices of food items, medicine, household furniture and new cars.

Local Goods Component

The reduction in prices of taro, fresh fish, green banana and ta'amu have resulted in a 0.1 percent decline in the local goods component.



Source: Samoa Bureau of Statistics

Changes by Division / Group

Health Index

The 14.9 percent increase in the Health Index was driven by higher prices recorded for medicine (amoxicillin tablets) which went up by 7.3%.

Furnishings, Household Equipment & Maintenance Index

The Furnishings, Household Equipment & Maintenance index rose 7.4 percent due to the increase in prices of single mattress (up 43.0%), bush knife (up to 9.4%) and refrigerator (up 8.3%).

Transport

The Transport Index recorded an increase of 3.5 percent due to the increase in the prices of new pickup truck (22.7%) and boat fares (Apia-Pago-Apia) (16.7%)

Food and Non-Alcoholic Beverages Index

The increase of 2.1 percent in the Food & Non-Alcoholic Beverages index reflected higher prices of chicken leg quarter (up 12.9%), sugar (up 15.3%), rice prepacked (up 12.0%), chocolate cake (up 17.4%), local coffee (up 10.5%), koko Samoa (up to 13.1%), Chinese cabbage (up 15.1%), cucumber (up 36.4%), tomato (up 56.9%) and coconut (up 16.7%) to name a few.

Restaurants Index

The Restaurants index also recorded an increase of 2.1 percent due to higher prices for steamed rice & chicken meal (up 5.0%) and fish and chips meal (up 2.2%).

Miscellaneous Goods and Services Index

The 1.7 percent rise in the Miscellaneous Goods & Services index was due to higher prices of toiletries (up 6.1%), embalming services (up 9.8%) and diapers (up 9.5%).

Recreation and Culture Index

The Recreation and Culture index also went up by 1.6 percent due to the increase in prices of exercise book (up 17.0%), laptop (up 15.3%) and newspaper (up 15.0%).

Communication Index

The increase in prices of mobile phone calling per minute (up 7.3%) was the major contributor to the 1.3 percent increase in the Communication index.

Alcoholic Beverages and Tobacco Index

The increase in prices of spirits contributed primarily to the 0.8 percent increase in the Alcoholic Beverages and Tobacco index.

Housing, Water, Electricity, Gas and other Fuels Index

The decline in prices for cement and kerosene has led to a 1.2 percent decrease in the Housing, Water, Electricity, Gas, and other Fuels index.

Clothing and Footwear Index

The 0.2 percent decrease in the Clothing and Footwear index reflected lower prices recorded for school uniforms.

Education

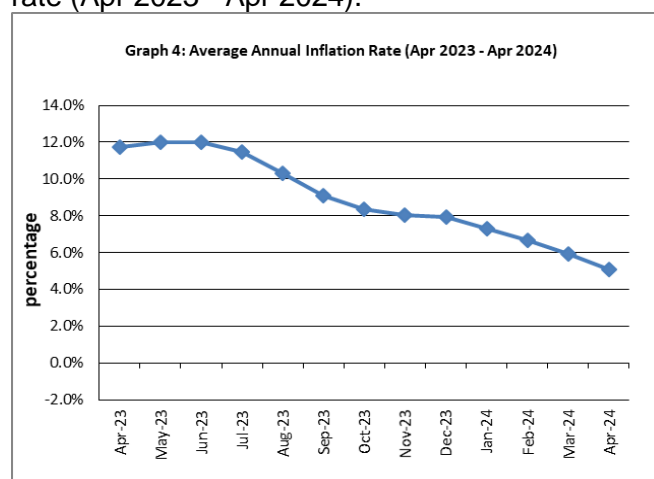
The Education index remained unchanged when compared to April 2023.

Underlying Indices ^{1/}

The All Items Underlying Index for April 2024 recorded an increase of 3.8 percent when compared to April 2023. It was 0.1 percent lower when compared to March 2024. Both the Imported and Local items underlying Indices recorded increases of 4.4 and 2.1 percent respectively.

Annual Inflation Rate

The average annual inflation rate for the year ended April 2024 was 5.1 percent. For the twelve months ending April 2023, the inflation rate was 11.7 percent. Presented in Graph 4 is the average annual inflation rate (Apr 2023 - Apr 2024).



Source: Samoa Bureau of Statistics

The attached Tables and Graphs provide the user with a more detailed analysis.

Technical Notes:

The Consumer Price (CPI) measures the rate of inflation for Samoa. It is designed to measure the change in prices for the goods purchased by households in Samoa. The CPI measures the change in prices by comparing the prices for a basket of goods and services at the collection period with the price for the same goods in a base period.

The basket of goods that is priced is based on the average expenditures of households as recorded in the Household Income and Expenditure Survey (HIES). The HIES survey identifies how much households spend on different items. The more households spend on an item on average, the more important it is to the price index, and the higher the weight in the index.

^{1/} Monthly movements in the 'headline' CPI series can be volatile. This volatility reflects price changes in particular items that may be due, among other factors, to fluctuations in commodity markets and agricultural conditions, policy changes, or seasonal or infrequent price resetting.

Underlying inflation is a measure of inflation that excludes certain items that face volatile price movements. Underlying inflation eliminates products that can have temporary price shocks because these shocks can diverge from the overall trend of inflation and give a false measure of inflation.

SAMOA BUREAU OF STATISTICS

*Economic Statistics Division
FMFM II Building, Level 1
P O Box 1151
Apia, Samoa*

Phone: (685) 62014/62015

Fax: (685) 24675

E-mail: info.stats@sbs.gov.ws

Website: www.sbs.gov.ws

Date of release: 17th April 2024

The next Consumer Price Index will be released on 15th June 2024.

OFISA FUAINUMERA FAAMAUINA

FUA FAATATAU O OLOA MA AUAUNAGA APERILA 2024

Fa'amatalaga 'Autu:

O le Fuafa'atatau o Tau o 'Oloa ma 'Auaunaga mo le masina o Aperila 2024 ua si'itia i le 1.9 pasene pe a fa'atusa i le masina o Aperila o le tausaga ua mavae (2023).

- Soifua Maloloina ua si'itia i le 14.9 pasene.
- Vaega o Meāfale ua si'itia i le 7.4 pasene.
- O Femalagaiga ua si'itia i le 3.5 pasene.

O le fesuaiga o Tau o Oloa ma Auaunaga i le tausaga faaiuina ia Aperila 2024 na si'itia i le 5.1 pasene.

A faatusa ia Mati 2024, na si'itia tau o oloa ma auaunaga i le 0.4 pasene.

AOTELEGA

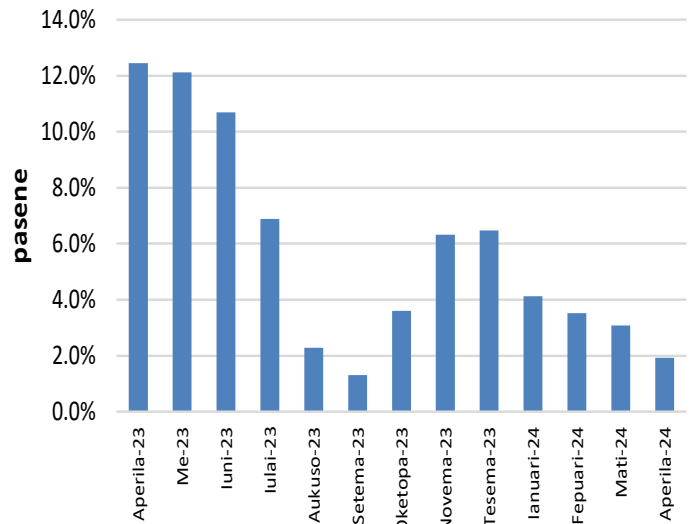
O le Fuafa'atatau o Tau o Oloa ma Auaunaga mo le masina o Aperila 2024 ua si'itia i le 1.9 pasene pe a fa'atusa ia Aperila 2023. E mafua mai ona o le maualuga o tau na faamauina mo fuālaau mo togafitiga, ta'avale fou ma ta'avale na faaoga muamua, pasese o va'a e malaga ai i Pago Pago ma nisi o meafale.

A fa'atusa i le masina ua mavae, o le Fuafa'atatau o tau o oloa ma auaunaga ua si'itia i le 0.4 pasene. O le Kalafi 1 o lo'o fa'aali atu ai suiga o tau o oloa ma auaunaga mai ia Aperila 2023 e pau mai ia Aperila 2024.

O 'oloa auina mai fafo ua fa'amauina le si'itia ai i le 3.7 pasene e mafua mai i le maualuga o tau na fa'amauina mo meaai, fuālaau meāfale ma taavale.

O 'oloa gaosi i totonu o le atunuu ua paū i le 0.1 pasene pe a faatusa i le masina o Aperila o le tausaga ua mavae, ona o le maualalo o tau na fa'amauina mo meaai e maua i totonu o le atunuu e pei o talo, i'a, fa'i ma ta'amu.

Kalafi 1: Suiga o Fuafaatatau o Tau o Oloa ma Auaunaga
(Aperila 2023 - Aperila 2024)



Faamaumauga: Ofisa Fuainumera Faamauina

Table 1. CONSUMER PRICE INDEX.

(Base Period : Average Prices February 2016 = 100)

Group	All Items	Food and Non Alcoholic Beverages	Alcoholic Beverages, Tobacco and Narcotics	Clothing and Footwear	Housing, Water, Electricity, Gas and other Fuels	Furnishings, Household Equipment, and Maintenance	Health	Transport	Communication	Recreation and Culture	Education	Restaurants	Miscellaneous goods and services
<i>Weights</i>	1000.0	403.7	128.4	21.2	119.6	30.8	4.6	148.5	51.5	6.1	19.7	22.4	43.5
<i>Ave - 2020</i>	106.6	110.4	120.0	93.5	89.6	98.1	99.2	104.4	104.2	88.5	114.9	109.4	98.8
<i>Ave - 2021</i>	109.9	114.1	121.6	98.9	92.4	98.9	105.7	111.7	107.1	88.2	109.9	111.2	97.2
<i>Ave - 2022</i>	122.0	131.8	122.8	108.3	93.1	105.0	101.9	131.0	124.5	91.0	109.4	126.2	102.1
<i>Ave - 2023</i>	131.6	152.7	123.8	110.4	93.9	108.2	98.4	131.1	132.0	92.8	97.4	140.0	111.2
<i>2023</i>													
<i>April</i>	131.8	154.0	123.7	110.6	94.1	106.5	97.6	129.2	132.0	95.6	96.3	140.1	111.1
<i>May</i>	131.5	152.3	123.8	110.8	93.4	106.7	97.6	132.2	132.0	92.3	96.3	140.1	111.8
<i>June</i>	133.9	157.3	122.4	111.0	96.0	106.8	98.3	134.0	132.0	92.3	96.3	140.1	111.5
<i>July</i>	134.0	159.5	123.2	111.0	93.0	108.8	98.3	129.1	132.0	91.2	96.3	140.1	113.3
<i>August</i>	132.8	156.8	123.2	110.9	92.8	108.6	96.0	128.8	132.0	90.7	96.3	141.9	113.0
<i>September</i>	131.8	153.2	123.6	111.3	93.1	109.8	97.1	130.5	132.0	91.8	96.3	141.9	113.1
<i>October</i>	132.3	152.4	124.3	111.4	93.9	109.9	99.3	135.3	132.0	92.2	96.3	141.9	112.2
<i>November</i>	132.4	151.1	124.4	111.3	94.8	110.9	99.3	138.4	132.0	94.5	96.3	141.9	112.1
<i>December</i>	132.0	153.2	124.2	111.3	93.4	111.4	99.3	131.5	132.0	92.8	96.3	141.9	111.5
<i>2024</i>													
<i>January</i>	133.4	156.6	124.4	111.4	92.9	113.0	105.5	130.8	133.7	98.2	96.3	141.9	111.0
<i>February</i>	133.5	157.4	124.7	110.3	92.8	111.8	111.3	128.9	133.7	94.8	96.3	141.9	112.4
<i>March</i>	133.8	156.8	124.7	110.2	93.0	112.2	112.2	132.1	133.7	94.6	96.3	143.0	112.4
<i>April (P)</i>	134.4	157.2	124.6	110.4	93.3	114.4	112.2	133.7	133.7	97.1	96.3	143.0	113.0
<u>Percentage Change (P)</u>													
<i>Apr 2024 over Apr 2023</i>	1.9%	2.1%	0.8%	-0.2%	-0.9%	7.4%	14.9%	3.5%	1.3%	1.6%	0.0%	2.1%	1.7%
<i>Apr 2024 over Mar 2024</i>	0.4%	0.3%	-0.1%	0.2%	0.3%	1.9%	0.0%	1.2%	0.0%	2.6%	0.0%	0.0%	0.5%

Source : Samoa Bureau Statistics

(P) : Provisional figures

Table 2. ALL ITEMS UNDERLYING INDEX

(Base Period : Average Prices February 2016 = 100)

Group	All Items	Food and Non Alcoholic Beverages	Alcoholic Beverages, Tobacco and Narcotics	Clothing and Footwear	Housing, Water, Electricity, Gas and other Fuels	Furnishings, Household Equipment, and Maintenance	Health	Transport	Communication	Recreation and Culture	Education	Restaurants	Miscellaneous goods and services
<i>Weights</i>	586.7	345.3	<i>n.a</i>	21.2	24.2	30.8	3.5	26.4	51.5	5.6	12.3	22.4	43.5
Ave - 2020	106.6	109.9		93.5	93.7	98.1	98.9	110.1	104.2	87.6	120.6	109.4	98.8
Ave - 2021	110.1	114.8		98.9	94.5	98.9	107.5	113.6	107.1	87.3	112.7	111.2	97.2
Ave - 2022	122.9	130.1		108.3	110.2	105.0	102.5	115.5	124.5	90.4	111.9	126.2	102.1
Ave - 2023	135.4	146.9		110.4	113.3	108.2	97.8	125.1	132.0	92.2	111.9	140.0	111.2
2023													
April	135.0	146.7		110.6	114.2	106.5	96.9	119.2	132.0	95.3	111.9	140.1	111.1
May	135.2	146.5		110.8	113.9	106.7	96.9	124.3	132.0	91.7	111.9	140.1	111.8
June	137.7	150.0		111.0	125.8	106.8	97.7	124.3	132.0	91.7	111.9	140.1	111.5
July	138.2	151.1		111.0	111.3	108.8	97.7	130.1	132.0	90.6	111.9	140.1	113.3
August	136.7	148.6		110.9	111.2	108.6	94.6	130.1	132.0	90.0	111.9	141.9	113.0
September	135.5	146.4		111.3	111.2	109.8	96.1	129.3	132.0	91.2	111.9	141.9	113.1
October	135.8	147.0		111.4	111.0	109.9	99.0	129.3	132.0	91.6	111.9	141.9	112.2
November	135.1	145.5		111.3	110.3	110.9	99.0	131.0	132.0	94.1	111.9	141.9	112.1
December	136.7	148.3		111.3	110.4	111.4	99.0	130.9	132.0	92.2	111.9	141.9	111.5
2024													
January	138.6	151.1		111.4	110.3	113.0	107.3	130.9	133.7	98.0	111.9	141.9	111.0
February	140.9	155.0		110.3	109.8	111.8	115.0	129.8	133.7	94.3	111.9	141.9	112.4
March	140.3	153.9		110.2	109.0	112.2	116.2	130.8	133.7	94.2	111.9	143.0	112.4
April (P)	140.1	153.1		110.4	110.0	114.4	116.2	130.8	133.7	96.9	111.9	143.0	113.0

Percentage Change (P)

Apr 2024 over Apr 2023	3.8%	4.4%		-0.2%	-3.7%	7.4%	19.9%	9.8%	1.3%	1.7%	0.0%	2.1%	1.7%
Apr 2024 over Mar 2024	-0.1%	-0.5%		0.2%	0.9%	1.9%	0.0%	0.0%	0.0%	2.9%	0.0%	0.0%	0.5%

Source : Samoa Bureau Statistics

(P) : Provisional figures

Note : n.a. Not applicable

Table 3. AVERAGE RETAIL PRICES OF SELECTED COMMODITIES

Commodities	Wt	Unit	2023			2024			Apr-24	
			Feb	Mar	Apr	Feb	Mar	Apr	% chng from prev mnth	%chng from Apr 23
01 Food and non-alcoholic beverages										
Chicken leg quarters	62.19	kg	6.55	6.36	6.37	6.83	7.35	7.20	-2.1%	12.9%
Raw Sugar	21.27	kg	3.60	3.59	3.58	4.07	4.18	4.12	-1.5%	15.3%
Bread	17.20	loaf	1.85	1.85	1.89	1.97	1.97	1.95	-0.8%	3.3%
Corned Beef Oxford (a)	15.88	340 grms	10.13	10.33	10.43	10.98	10.98	10.98	0.0%	5.3%
Taro	15.17	kg	4.13	3.96	4.09	4.61	3.79	3.85	1.5%	-5.8%
Re-packed medium grain rice	13.38	kg	3.56	3.56	3.56	3.95	4.00	3.93	-2.0%	10.2%
Prepacked medium grain rice (a)	13.38	907 grms	3.05	3.05	3.05	3.42	3.58	3.42	-4.7%	12.0%
Bongo	10.18	20 grms	0.89	0.90	0.90	0.92	0.92	0.92	0.0%	2.2%
Keke Saina Biscuits (a)	9.21	pkt 10	7.25	7.25	7.38	7.53	7.50	7.58	1.1%	2.8%
Ice Cream (a)	9.17	2 ltr	19.25	19.25	19.42	19.73	19.73	19.87	0.7%	2.3%
Ramen	9.00	85 grms	1.37	1.37	1.38	1.43	1.41	1.46	3.1%	5.6%
Fish (Piece)	7.92	kg	29.72	31.25	60.00	37.62	33.50	31.25	-6.7%	-47.9%
Butter	7.66	454 grms	18.83	18.97	18.89	20.11	20.11	19.96	-0.8%	5.7%
Round Pancake (a)	7.50	sml	0.20	0.20	0.20	0.20	0.20	0.20	0.0%	0.0%
Mutton Flaps	6.63	kg	26.30	25.68	25.02	22.13	22.46	23.03	2.6%	-7.9%
Canned fish betw een \$3.00 and	6.37	425 grms	3.29	3.37	3.37	3.67	3.68	3.68	0.0%	9.2%
Canned fish \$4:00 or over N/Oil	6.37	425 grms	4.75	4.86	4.89	5.18	5.41	5.85	8.1%	19.6%
Canned fish betw een \$3.00 and	6.37	425grms	3.35	3.41	3.36	3.26	3.34	3.30	-1.1%	-1.9%
Canned fish under \$3.00 in N/Oil	6.37	425 grms	2.77	2.77	2.73	2.92	2.97	2.93	-1.1%	7.3%
Turkey Wings	6.31	kg	16.21	16.36	17.28	14.02	14.51	14.51	0.0%	-16.0%
Fish (string)	5.98	kg	14.00	14.05	17.86	15.68	13.96	14.53	4.1%	-18.6%
Fish (large)	5.98	kg	25.92	23.76	21.65	29.62	25.55	25.09	-1.8%	15.9%
Cooking vegetable oil (a)	5.89	ltr	9.71	8.81	8.74	7.03	7.03	6.91	-1.7%	-21.0%
Sausage beef	5.76	kg	14.73	15.19	15.42	15.58	15.58	15.58	0.0%	1.1%
Chinese Cabbage	5.53	kg	10.26	8.93	10.37	11.58	11.76	11.94	1.5%	15.1%
Eggs medium size	5.45	doz	8.42	8.12	8.05	8.05	8.09	7.97	-1.5%	-1.1%
Flour plain w hite	5.29	kg	3.37	3.59	3.73	3.33	3.25	3.42	5.3%	-8.2%
Onions	5.23	kg	5.79	5.54	5.57	6.33	6.19	5.66	-8.6%	1.7%
Milk Devondale	5.11	1ltr	5.84	5.77	5.75	5.42	5.38	5.38	0.0%	-6.4%
Soft Drink Coke	5.07	600 mls	3.16	3.58	3.72	3.82	3.85	3.85	0.0%	3.5%
Soft Drink Taxi	5.07	330 mls	1.92	1.92	1.92	1.92	1.92	1.92	0.0%	0.1%
Milk Anchor	4.81	1ltr	5.09	5.39	5.17	5.01	5.02	5.05	0.6%	-2.3%
Salted Beef	4.72	kg	23.69	24.36	23.45	23.55	23.15	23.15	0.0%	-1.3%
Canned fish Soifua in Tomato Sai	4.47	425 grms	2.56	2.51	2.48	2.70	2.63	2.65	1.0%	7.1%
CCK Coffee	4.47	100 grms	3.94	4.20	4.20	4.56	4.64	4.64	0.0%	10.5%
Sky Flakes Biscuits	4.29	850 grms	19.63	19.51	19.66	21.01	21.01	21.01	0.0%	6.9%
Stew ing beef	4.20	kg	17.79	17.79	17.79	18.90	18.90	18.90	0.0%	6.3%

Koko Samoa	4.09	cup	25.44	26.52	22.25	22.74	24.39	25.16	3.1%	13.1%
Corned Beef Pacific	3.64	340 grms	18.88	19.66	19.39	19.61	19.61	19.63	0.1%	1.2%
Ramen kimchi (bow l)	3.40	86 grms	3.52	3.48	3.48	3.39	3.36	3.34	-0.5%	-3.8%
Soy Sauce Mushroom	3.25	750 grms	3.63	3.71	3.72	3.66	3.70	3.68	-0.5%	-0.9%
Pork Pig Trotter	3.10	kg	8.75	9.64	9.71	9.24	9.15	9.50	3.9%	-2.2%
Corned Beef Palm	3.01	340 grms	19.00	19.07	19.12	18.11	18.19	18.19	0.0%	-4.9%
Ripe Banana (a)	2.71	kg	4.48	4.22	4.16	4.58	4.32	4.09	-5.3%	-1.6%
Tang pow der (a)	2.51	25 grms	0.60	0.57	0.57	0.59	0.59	0.59	0.0%	3.2%
Minties Pascall (a)	2.49	200 grms	16.50	16.50	16.50	12.50	12.50	12.50	0.0%	-24.2%
Potatoes	2.41	kg	6.52	5.88	6.35	6.25	6.36	6.24	-1.9%	-1.8%
Green Banana	2.29	kg	1.34	1.40	1.58	1.58	1.44	1.55	7.5%	-2.1%
Apple small	2.26	each	1.69	1.80	2.09	1.68	1.66	1.65	-0.6%	-20.8%
Mineral Water	2.25	bottle	1.88	1.97	1.97	1.91	1.97	1.97	0.0%	0.0%
Chocolate Cake (a)	2.15	sml	22.40	22.40	22.40	26.30	26.30	26.30	0.0%	17.4%
Cucumbers	2.12	kg	6.79	6.57	6.97	8.49	8.57	9.51	11.0%	36.4%
Instant Nescafe Coffee	2.02	50 grms	8.50	8.72	8.72	9.40	9.34	9.40	0.6%	7.8%
Mutton Neck	1.93	kg	27.13	26.87	26.42	22.02	22.02	23.07	4.8%	-12.7%
Vermicelli Lungken	1.88	454 grms	4.84	4.68	4.82	4.71	4.65	4.75	2.3%	-1.4%
Tomatoes	1.80	kg	21.84	23.51	25.11	27.89	30.20	39.40	30.5%	56.9%
Sausage Pork	1.68	kg	15.19	15.80	15.51	15.22	15.22	15.21	0.0%	-1.9%
Bell Tea Bags	1.62	150 grms	11.40	11.40	11.39	11.38	11.38	11.38	0.0%	-0.1%
Samco Tw isties	1.40	20 grms	0.81	0.83	0.81	0.87	0.87	0.87	0.0%	7.0%
Matured husked Coconuts	1.30	kg	1.24	1.18	1.25	1.11	1.22	1.20	-1.7%	-4.3%
Matured Un husked Coconuts (a)	1.30	kg	0.73	0.67	0.63	0.85	0.87	0.87	0.8%	37.7%
Taamu	1.13	kg	5.04	16.60	19.50	4.65	5.49	3.84	-30.1%	-80.3%
Round Cabbage Round	1.12	kg	12.99	13.52	17.15	13.95	14.53	16.00	10.1%	-6.7%

02 Alcoholic beverages, tobacco and narcotics

Beer Vailima Lager	37.94	355 mls	3.80	3.80	3.80	3.80	3.80	3.80	0.0%	0.0%
Pall Mall Filter Cigarettes (Red)	24.29	20 rolls	14.60	14.60	14.60	15.20	15.20	15.20	0.0%	4.1%
Pall Mall Menthol Cigarettes (Gree	24.29	20 rolls	14.60	14.60	14.60	15.20	15.20	15.20	0.0%	4.1%
Beer Taula (a)	16.26	330 mls	3.80	4.26	4.28	4.23	4.23	4.19	-0.9%	-2.0%
Tobacco w infield (a)	12.64	30 grms	15.00	15.00	12.50	10.48	10.48	10.48	0.0%	-16.2%
Vodka Niu Spirit (a)	3.76	Niu / 2 ltr	66.82	66.82	66.82	66.78	66.78	66.78	0.0%	0.0%
Whisky Jim Bean Spirit (a)	3.76	1 ltr	93.13	94.63	94.63	104.63	104.63	104.88	0.2%	10.8%
Paper Cigarettes	3.61	50 sheets	1.70	1.70	1.86	1.80	1.80	1.80	0.0%	-3.2%
Samoan kava	1.82	pkt	43.92	40.00	41.85	41.82	42.05	43.33	3.0%	3.5%

03 Clothing and footwear

Uniform le Faitaga College boys	4.28	size 8-10	37.67	38.33	38.33	37.67	37.67	37.67	0.0%	-1.7%
Uniform Pa'ave (a)	3.71	size 7	42.67	45.00	45.00	44.83	44.83	44.83	0.0%	-0.4%
Jandals soft	2.48	10.5 size	9.33	9.33	9.50	9.83	9.83	9.83	0.0%	3.5%
Puletasi mamanu palama (a)	2.35	medium	125.00	130.00	130.00	130.00	130.00	130.00	0.0%	0.0%
le solosolo cotton print	2.22	42 inch	12.03	12.40	12.90	11.87	11.87	11.87	0.0%	-8.0%
Cargo shorts (a)	1.76	38 size	93.00	93.00	93.00	93.00	93.00	93.00	0.0%	0.0%
Shirt short sleeves men Aloha sh	1.15	men / XL	58.10	59.48	59.48	59.98	59.98	59.98	0.0%	0.8%
Shirt long sleeves men	1.15	16.5 size	38.38	38.38	38.38	39.50	39.50	39.50	0.0%	2.9%
Shoes Nike Running shoes (a)	0.82	size 9	224.75	224.75	224.75	267.25	262.25	267.25	1.9%	18.9%
le Faitaga	0.70	36/38 size	39.24	39.24	39.06	38.44	38.44	38.44	0.0%	-1.6%
Woman Nylon Panties	0.59	medium	4.42	4.42	4.50	4.25	4.25	4.50	5.9%	0.0%

04 Housing, water, electricity, gas and other fuels

Electricity Cashpower	50.59	kwh	0.58	0.58	0.58	0.58	0.58	0.58	0.0%	0.0%
Reservoir treated Water	28.55	15-40 m3	1.34	1.34	1.34	1.34	1.34	1.34	0.0%	0.0%
Liquid gas	15.77	9kg	71.80	71.80	71.80	69.00	69.00	69.00	0.0%	-3.9%
Government house Rent	12.16	2 b/room	680.00	680.00	680.00	680.00	680.00	680.00	0.0%	0.0%
Kerosene	4.12	1 ltr	3.11	3.20	3.20	2.98	3.02	3.08	2.0%	-3.9%
Paint High gloss w white	3.45	4 ltrs	79.42	85.17	85.25	83.08	83.08	88.00	5.9%	3.2%
Paint Plus 2 plastic w white	3.45	4 ltrs	52.40	53.40	53.40	56.40	54.60	54.60	0.0%	2.2%
Cement NZ or Australia	0.78	40 kg	45.80	45.57	45.00	32.70	31.39	30.93	-1.5%	-31.3%
Dressed per Timber 2x4	0.71	meter	11.10	11.12	11.08	10.31	10.30	10.67	3.6%	-3.7%

05 Furnishings, household equipment and routine household maintenance

Washing powder (a)	6.27	200 grms	2.09	2.02	2.02	2.08	2.10	2.14	2.1%	6.0%
Washing Soap yellow	5.90	bar	3.28	3.35	3.35	3.45	3.45	3.65	5.5%	9.0%
Mosquito coil	4.36	10 coil	1.55	1.55	1.53	1.45	1.45	1.45	0.0%	-4.9%
Mattress single Futon (a)	3.81	4 inch	146.50	147.33	151.83	215.50	215.50	217.17	0.8%	43.0%
Babysitting live-in (a)	3.78	1 week	142.50	142.50	142.50	142.50	142.50	142.50	0.0%	0.0%
Refrigerator common brand	2.49	331-335 ltr	2362.52	2362.52	2401.32	2601.32	2601.32	2601.32	0.0%	8.3%
Gold Power washing powder	1.68	180 grms	1.67	1.67	1.67	1.67	1.67	1.67	0.0%	0.0%
Eveready AA size Batteries	1.20	AA 1/4 size	3.90	4.01	4.01	4.27	4.27	4.17	-2.3%	3.9%
Bush knife tramontina	0.88	24 inch	30.49	30.11	29.11	32.49	32.74	31.86	-2.7%	9.4%
Kerosene stove	0.16	2 burner	112.50	137.25	137.25	129.75	129.75	129.75	0.0%	-5.5%
Tumblers Glass basic no design (0.11	medium	15.66	15.96	15.96	16.04	16.04	16.04	0.0%	0.5%
Seife 3 shelves	0.11	48*48 inch	722.50	760.00	760.00	810.00	810.00	810.00	0.0%	6.6%
Clothing chest flat top	0.01	medium	607.50	757.50	757.50	770.00	770.00	770.00	0.0%	1.7%

06 Health

Amoxicillin 500mg tablets (a)	2.46	20 tablets	7.90	7.73	8.23	8.67	8.83	8.83	0.0%	7.3%
Hospital Charge	1.15	per night	22.50	22.50	22.50	22.50	22.50	22.50	0.0%	0.0%
Private Doctor Consultation fee	1.04	per adult	30.00	30.00	30.00	30.00	30.00	30.00	0.0%	0.0%

07 Transport

Petrol	60.80	1 ltr	3.03	3.20	3.26	3.12	3.24	3.35	3.2%	2.8%
Taxi Fare P.O to Motootua Hosp	8.15	per trip	4.80	4.80	4.80	4.80	4.80	4.80	0.0%	0.0%
Taxi Fares P.O to Malua	8.15	per trip	31.30	31.30	31.30	31.30	31.30	31.30	0.0%	0.0%
Taxi Fares P.O to Falefa	8.15	per trip	43.20	43.20	43.20	43.20	43.20	43.20	0.0%	0.0%
Air Fares Faleolo-Pago-Faleolo	6.84	return trip	676.02	676.02	680.00	754.61	754.61	754.61	0.0%	11.0%
Air Fares Apia Auckland Apia	6.77	1 month	1549.44	1483.44	1468.81	1366.04	1519.21	1364.74	-10.2%	-7.1%
Car Registration (private car)	5.67	1501-2000 cc	256.00	256.00	256.00	281.60	281.60	281.60	0.0%	10.0%
Used Car Toyota Corolla (a)	5.08	1500 cc	23500.00	23500.00	25333.33	27666.67	27666.67	27666.67	0.0%	9.2%
Used Car Toyota Camry (a)	5.08	1500 cc	18000.00	18000.00	18000.00	18000.00	18000.00	18000.00	0.0%	0.0%
Diesel	4.83	1 ltr	3.52	3.56	3.56	3.32	3.43	3.52	2.8%	-0.9%
Bus Fares Apia Motootua Hosp	3.49	one adult	1.30	1.30	1.30	1.20	1.20	1.20	0.0%	-7.7%
Bus Fares Apia Malua	3.49	one adult	2.60	2.60	2.60	2.60	2.60	2.60	0.0%	0.0%
Bus Fares Apia Falefa	3.49	one adult	3.70	3.70	3.70	3.70	3.70	3.70	0.0%	0.0%
Labour charge car repair	3.38	min charge	67.00	67.00	67.00	67.00	67.00	67.00	0.0%	0.0%
New Pickup Ford Ranger Double	3.25	3200 cc	94000.00	94000.00	94000.00	125000.00	125000.00	125000.00	0.0%	33.0%
New Pickup Toyota Hilux Double	3.25	3200 cc	105000.00	105000.00	105000.00	118000.00	118000.00	118000.00	0.0%	12.4%
Used Mini van Toyota Noah (a)	2.42	2000 cc	22000.00	22000.00	21600.00	23333.33	24000.00	24000.00	0.0%	11.1%
Used Mini van Toyota Voxy (a)	2.42	2000 cc	22000.00	22000.00	21600.00	23833.33	24833.33	24833.33	0.0%	15.0%
Car Tyre	1.49	195/70 R(14)	197.50	212.50	212.50	215.00	215.00	215.00	0.0%	1.2%
Boat Fares Mulifanua Salelologa	1.14	one way	10.00	10.00	10.00	10.00	10.00	10.00	0.0%	0.0%
Boat Fares Apia Pago Apia	1.14	min charge	120.00	120.00	120.00	120.00	140.00	140.00	0.0%	16.7%

08 Communication

Calling per minute Rate cell phone	10.02	per minute	0.55	0.55	0.55	0.59	0.59	0.59	0.0%	7.3%
Internet data bundles per mb Rate	10.02	per mb	0.33	0.33	0.33	0.33	0.33	0.33	0.0%	0.0%
Calling per minute Rate cell phone	10.02	per minute	0.49	0.49	0.49	0.49	0.49	0.49	0.0%	0.0%
Internet data bundles per mb Rate	10.02	per mb	0.33	0.33	0.33	0.33	0.33	0.33	0.0%	0.0%
Telephone Rental	3.87	1 month	24.15	24.15	24.15	24.15	24.15	24.15	0.0%	0.0%
Prepaid Internet	3.06	30 mins	5.80	5.80	5.80	5.80	5.80	5.80	0.0%	0.0%
Telephone call NZ	1.50	3 mins	2.37	2.37	2.37	2.37	2.37	2.37	0.0%	0.0%
Telephone call USA	1.50	3 mins	2.97	2.97	2.97	2.97	2.97	2.97	0.0%	0.0%
Telephone call local	1.50	1 min	0.10	0.10	0.10	0.10	0.10	0.10	0.0%	0.0%

09 Recreation and culture

Television LCD 32" (a)	2.30	LCD 32"	832.83	832.83	929.33	730.67	737.38	737.38	0.0%	-20.7%
Exercise Book w arwick	1.44	1B4	1.47	1.47	1.47	1.72	1.72	1.72	0.0%	17.0%
Laptop (a)	1.33	each	3597.80	3597.80	3503.00	3719.83	3669.00	4040.67	10.1%	15.3%
Weedkiller Graxomone/Agriquat (0.56	1 ltr	51.67	51.67	51.67	46.67	46.67	46.67	0.0%	-9.7%
Cinema Admission	0.41	ticket	15.00	15.00	15.00	15.00	15.00	15.00	0.0%	0.0%
New s Paper Samoa Observer	0.01	each	2.50	2.50	2.50	2.88	2.88	2.88	0.0%	15.0%
New s Paper New sline	0.01	each	2.50	2.50	2.50	2.50	2.50	2.50	0.0%	0.0%

10 Education

Fees Primary PTA/registration fee	7.23	Year 6	72.50	72.50	72.50	72.50	72.50	72.50	0.0%	0.0%
Fees Secondary PTA/registration	5.11	Year 10	58.00	58.00	58.00	58.00	58.00	58.00	0.0%	0.0%
Fees Tertiary NUS registration Sc	3.79	registration	122.00	122.00	122.00	122.00	122.00	122.00	0.0%	0.0%
Fees Secondary Y Examination F	3.61	Y12-13	25.50	25.50	25.50	25.50	25.50	25.50	0.0%	0.0%

11 Restaurants and hotels

Fish & Chip Meal	7.79	1 serve	11.58	11.58	11.58	11.58	11.83	11.83	0.0%	2.2%
Curry & Chopsuey Meal	4.87	1 serve	5.00	5.33	5.33	5.33	5.33	5.33	0.0%	0.0%
Chicken & Chips Meal (a)	4.87	1 serve	12.14	13.57	13.57	13.57	13.64	13.64	0.0%	0.5%
Steam rice & chicken Meal (a)	4.87	1 serve	6.67	6.67	6.67	7.00	7.00	7.00	0.0%	5.0%

12 Miscellaneous goods and services

Toilet Paper Sofan deluxe ply	8.52	250 sheets	1.20	1.26	1.26	1.25	1.25	1.25	0.0%	-1.0%
Hair Gel	4.59	1124 ml	5.57	5.57	5.71	5.61	5.61	5.61	0.0%	-1.8%
Storage of remains (a)	4.41	per day	60.00	66.67	66.67	66.67	66.67	66.67	0.0%	0.0%
Basic Casket (a)	4.41	each	1966.67	1966.67	1966.67	1966.67	1966.67	1966.67	0.0%	0.0%
Standard Embalming (a)	4.41	1 person	1500.00	1525.00	1525.00	1675.00	1675.00	1675.00	0.0%	9.8%
Toilet soap Protex (a)	4.38	90g	2.05	2.05	2.04	2.03	2.03	2.05	0.9%	0.4%
Diapers Soft Love (a)	4.19	5kg-10kg	7.56	7.56	7.50	7.39	7.39	7.50	1.5%	0.0%
Toilet soap Lux	3.87	85g	1.20	1.33	1.33	1.39	1.38	1.41	2.7%	6.6%
Paste Colgate regular flavour	3.43	140g	4.86	4.99	4.99	5.02	5.08	5.08	0.0%	1.8%
Diapers Huggies	1.30	16kg & over	39.72	39.72	39.72	43.32	43.51	43.51	0.0%	9.5%

Source : Samoa Bureau Statistics

(a) : New commodity from February 2016

(P) : Provisional figures

Note : Please note unit of conversion was in pound's (lb's) but been converted into kilograms (kg)

Table 4. IMPORTED GOODS COMPONENT OF THE CONSUMER PRICE INDEX

(Base Period : Average Prices February 2016 = 100)

	All Items	Food and Non Alcoholic Beverages	Alcoholic Beverages, Tobacco and Narcotics	Clothing and Footwear	Housing, Water, Electricity, Gas and other Fuels	Furnishings, Household Equipment and Maintenance	Health	Transport	Communication	Recreation and Culture	Education	Restaurants	Miscellaneous goods and services
<i>Weights</i>	494.7	269.1	23.8	15.2	28.3	26.9	2.5	88.6	<i>n.a</i>	5.6	<i>n.a</i>	<i>n.a</i>	34.7
<i>Ave - 2020</i>	107.9	112.2	117.1	93.2	96.0	97.7	95.8	107.4		87.6			98.0
<i>Ave - 2021</i>	114.0	118.4	118.8	100.9	99.1	98.7	108.0	119.9		87.3			95.9
<i>Ave - 2022</i>	131.5	136.3	119.2	114.6	121.9	105.7	100.9	149.1		90.4			102.0
<i>Ave - 2023</i>	141.3	154.7	108.5	117.0	123.2	109.3	94.3	145.2		92.2			111.7
2023													
April	141.1	154.6	109.9	117.3	124.7	107.3	92.9	143.3		95.3			112.1
May	141.5	154.5	111.0	117.5	121.5	107.6	92.9	146.4		91.7			113.1
June	144.2	158.4	102.4	117.8	131.7	107.6	94.1	148.7		91.7			112.7
July	143.2	159.8	102.3	117.8	118.7	109.9	94.1	142.4		90.6			113.4
August	140.8	156.4	103.2	117.7	117.9	109.7	89.7	140.1		90.0			113.0
September	140.1	153.4	103.2	118.0	119.3	111.0	91.8	143.8		91.2			113.1
October	142.1	154.1	103.3	117.8	122.7	111.2	96.0	152.2		91.6			112.0
November	142.0	152.0	103.8	117.8	126.6	112.3	96.0	155.7		94.1			111.9
December	142.0	155.8	103.8	117.8	121.5	112.9	96.0	146.0		92.2			111.1
2024													
January	143.4	159.3	104.0	117.7	119.6	114.7	107.7	142.9		98.0			110.4
February	145.9	164.4	104.0	116.1	119.0	113.4	118.8	141.6		94.3			112.3
March	145.9	163.0	104.0	116.0	118.7	113.8	120.4	145.9		94.2			112.3
April (P)	146.3	162.0	104.0	116.3	120.1	116.3	120.4	149.5		94.2			113.0
<u>Percentage Change (P)</u>													
Apr 2024 over Apr 2023	3.7%	4.7%	-5.3%	-0.9%	-3.7%	8.4%	29.6%	4.4%		1.7%			0.8%
Apr 2024 over Mar 2024	0.3%	-0.6%	0.1%	0.2%	1.1%	2.2%	0.0%	2.4%		2.9%			0.6%

: Samoa Bureau Statistics

(P) : Provisional figures

Note : n.a. Not applicable

Table 5. IMPORTED ITEMS UNDERLYING INDEX

(Base Period : Average Prices February 2016 = 100)

	All Items	Food and Non Alcoholic Beverages	Alcoholic Beverages, Tobacco and Narcotics	Clothing and Footwear	Housing, Water , Electricity, Gas and other Fuels	Furnishings, Household Equipment and Maintenance	Health	Transport	Communication	Recreation and Culture	Education	Restaurants	Miscellaneous goods and services
Weights	401.2	269.1	n.a	15.2	24.2	26.9	2.5	23.0	n.a	5.6	n.a	n.a	34.7
Ave - 2020	107.6	112.2		93.2	93.7	97.7	95.8	110.4		87.6			98.0
Ave - 2021	112.3	118.4		100.9	94.5	98.7	108.0	114.4		87.3			95.9
Ave - 2022	126.8	136.3		114.6	110.2	105.7	100.9	115.7		90.4			102.0
Ave - 2023	141.1	154.7		117.0	113.3	109.3	94.3	126.7		92.2			111.7
2023													
April	140.7	154.6		117.3	114.2	107.3	92.9	119.9		95.3			112.1
May	141.0	154.5		117.5	113.9	107.6	92.9	125.8		91.7			113.1
June	144.4	158.4		117.8	125.8	107.6	94.1	125.8		91.7			112.7
July	145.0	159.8		117.8	111.3	109.9	94.1	132.5		90.6			113.4
August	142.6	156.4		117.7	111.2	109.7	89.7	132.5		90.0			113.0
September	140.7	153.4		118.0	111.2	111.0	91.8	131.5		91.2			113.1
October	141.1	154.1		117.8	111.0	111.2	96.0	131.5		91.6			112.0
November	139.9	152.0		117.8	110.3	112.3	96.0	133.4		94.1			111.9
December	142.4	155.8		117.8	110.4	112.9	96.0	133.3		92.2			111.1
2024													
January	144.9	159.3		117.7	110.3	114.7	107.7	133.4		98.0			110.4
February	148.2	164.4		116.1	109.8	113.4	118.8	132.1		94.3			112.3
March	147.3	163.0		116.0	109.0	113.8	120.4	133.3		94.2			112.3
April (P)	147.0	162.0		116.3	110.0	116.3	120.4	133.3		96.9			113.0
<u>Percentage Change (P)</u>													
Apr 2024 over Apr 2023	4.4%	4.7%		-0.9%	-3.7%	8.4%	29.6%	11.1%		1.7%			0.8%
Apr 2024 over Mar 2024	-0.2%	-0.6%		0.2%	0.9%	2.2%	0.0%	0.0%		2.9%			0.6%

Source : Samoa Bureau Statistics

(P) : Provisional figures

Note : n.a. Not applicable

Table 6. LOCAL GOODS COMPONENT OF THE CONSUMER PRICE INDEX

(Base Period : Average Prices February 2016 = 100)

Group	All Items	Food and Non Alcoholic Beverages	Alcoholic Beverages, Tobacco and Narcotics	Clothing and Footwear	Housing, Water , Electricity, Gas and other Fuels	Furnishings, Household Equipment and Maintenance	Health	Transport	Communication	Recreation and Culture	Education	Restaurants	Miscellaneous goods and services
Weights	505.3	134.6	104.6	6.0	91.3	3.9	2.2	59.9	51.5	0.4	19.7	22.4	8.8
Ave - 2020	105.3	106.8	120.7	94.2	87.6	100.3	103.0	100.1	104.2	100.0	114.9	109.4	102.3
Ave - 2021	105.9	105.6	122.2	93.8	90.3	100.3	103.0	99.6	107.1	100.0	109.9	111.2	102.3
Ave - 2022	112.6	122.8	123.6	92.1	84.2	100.6	103.0	104.3	124.5	100.0	109.4	126.2	102.3
Ave - 2023	122.2	148.8	127.3	93.4	84.8	101.1	103.0	110.2	132.0	100.0	97.4	140.0	109.2
2023													
March	119.1	139.0	126.7	93.0	84.7	101.1	103.0	108.4	132.0	100.0	96.3	140.1	107.0
April	122.8	152.7	126.8	93.6	84.7	101.1	103.0	108.4	132.0	100.0	96.3	140.1	107.0
May	121.8	147.9	126.7	93.6	84.7	101.1	103.0	111.3	132.0	100.0	96.3	140.1	107.0
June	123.9	155.1	126.9	93.6	85.0	101.2	103.0	112.1	132.0	100.0	96.3	140.1	107.0
July	124.9	158.9	128.0	93.6	85.0	101.2	103.0	109.4	132.0	100.0	96.3	140.1	113.0
August	125.0	157.5	127.7	93.6	85.0	101.2	103.0	112.2	132.0	100.0	96.3	141.9	113.0
September	123.6	152.7	128.2	94.2	85.0	101.1	103.0	110.8	132.0	100.0	96.3	141.9	113.0
October	122.7	148.9	129.0	95.1	85.0	101.1	103.0	110.4	132.0	100.0	96.3	141.9	113.0
November	123.1	149.4	129.1	94.7	85.0	101.3	103.0	112.8	132.0	100.0	96.3	141.9	113.0
December	122.3	148.0	128.8	94.7	84.7	101.4	103.0	109.9	132.0	100.0	96.3	141.9	113.0
2024													
January	123.7	151.2	129.0	95.1	84.7	101.4	103.0	112.8	133.7	100.2	96.3	141.9	113.0
February	121.4	143.5	129.5	95.5	84.7	101.4	103.0	109.9	133.7	100.4	96.3	141.9	113.0
March	122.0	144.4	129.5	95.5	85.0	101.4	103.0	111.5	133.7	100.4	96.3	143.0	113.0
April (P)	122.7	147.7	129.3	95.5	85.0	101.4	103.0	110.3	133.7	100.4	96.3	143.0	113.0
<u>Percentage Change (P)</u>													
Apr 2024 over Apr 2023	-0.1%	-3.3%	2.0%	2.1%	0.4%	0.3%	0.0%	1.7%	1.3%	0.4%	0.0%	2.1%	5.6%
Apr 2024 over Mar 2024	0.6%	2.3%	-0.1%	0.0%	0.0%	0.0%	0.0%	-1.1%	0.0%	0.0%	0.0%	0.0%	0.0%

Source : Samoa Bureau Statistics

(P) : Provisional figures

Table 7. LOCAL ITEMS UNDERLYING INDEX

(Base Period : Average Prices February 2016 = 100)

Group	All Items	Food and Non Alcoholic Beverages	Alcoholic Beverages, Tobacco and Narcotics	Clothing and Footwear	Housing, Water , Electricity, Gas and other Fuels	Furnishings, Household Equipment and Maintenance	Health	Transport	Communication	Recreation and Culture	Education	Restaurants	Miscellaneous goods and services
Weights	185.5	76.1	n.a	6.0	n.a	3.9	1.0	3.4	51.5	n.a	12.3	22.4	8.8
Ave - 2020	104.6	101.9		94.2		100.3	106.3	108.6	104.2		120.6	109.4	102.3
Ave - 2021	105.1	102.1		93.8		100.3	106.3	108.6	107.1		112.7	111.2	102.3
Ave - 2022	114.3	108.1		92.1		100.6	106.3	114.4	124.5		111.9	126.2	102.3
Ave - 2023	123.1	119.5		93.4		101.1	106.3	114.4	132.0		111.9	140.0	109.2
2023													
April	122.6	118.6		93.6		101.1	106.3	114.4	132.0		111.9	140.1	107.0
May	122.4	118.2		93.6		101.1	106.3	114.4	132.0		111.9	140.1	107.0
June	123.2	120.1		93.6		101.2	106.3	114.4	132.0		111.9	140.1	107.0
July	123.6	120.4		93.6		101.2	106.3	114.4	132.0		111.9	140.1	113.0
August	124.1	120.9		93.6		101.2	106.3	114.4	132.0		111.9	141.9	113.0
September	124.4	121.6		94.2		101.1	106.3	114.4	132.0		111.9	141.9	113.0
October	124.5	121.8		95.1		101.1	106.3	114.4	132.0		111.9	141.9	113.0
November	124.6	122.2		94.7		101.3	106.3	114.4	132.0		111.9	141.9	113.0
December	124.4	121.6		94.7		101.4	106.3	114.4	132.0		111.9	141.9	113.0
2024													
January	125.0	121.8		95.1		101.4	106.3	114.4	133.7		111.9	141.9	113.0
February	125.0	121.8		95.5		101.4	106.3	114.4	133.7		111.9	141.9	113.0
March	125.0	121.6		95.5		101.4	106.3	114.4	133.7		111.9	143.0	113.0
April (P)	125.1	121.9		95.5		101.4	106.3	114.4	133.7		111.9	143.0	113.0
<u>Percentage Change (P)</u>													
Apr 2024 over Apr 2023	2.1%	2.8%		2.1%		0.3%	0.0%	0.0%	1.3%		0.0%	2.1%	5.6%
Apr 2024 over Mar 2024	0.1%	0.2%		0.0%		0.0%	0.0%	0.0%	0.0%		0.0%	0.0%	0.0%

Source : Samoa Bureau Statistics
(P) : Provisional figures
Note : n.a. Not applicable

Table 8. CONSUMER PRICE INDEX (AVERAGE ANNUAL INFLATION RATE).

(Base Period : Average Prices February 2016 = 100)

	All Items	Food and Non Alcoholic Beverages	Alcoholic Beverages, Tobacco and Narcotics	Clothing and Footwear	Housing, Water , Electricity, Gas and other Fuels	Furnishings, Household Equipment, and Maintenance	Health	Transport	Communication	Recreation and Culture	Education	Restaurants	Miscellaneous goods and services
Weights	1000.0	403.7	128.4	21.2	119.6	30.8	4.6	148.5	51.5	6.1	19.7	22.4	43.5
2019	1.0	1.0	4.1	-1.6	4.4	-1.6	3.1	-3.2	0.9	-4.2	2.8	4.4	0.0
2020	-1.6	-1.5	2.7	-0.3	-5.7	1.8	-0.9	-6.1	0.0	-0.3	1.2	5.9	1.0
2021	3.1	3.4	1.3	5.8	3.1	0.9	6.5	7.0	2.8	-0.3	-4.3	1.7	-1.6
2022	11.0	15.5	1.0	9.5	0.8	6.2	-3.6	17.3	16.2	3.2	-0.4	13.5	5.0
2023	7.9	15.9	0.8	1.9	0.8	3.1	-3.4	0.0	6.0	1.9	-11.0	10.9	8.9
2023													
April	11.7	17.7	1.4	4.3	0.5	6.5	-5.4	14.6	17.0	3.2	-3.0	16.7	8.4
May	12.0	18.5	1.4	3.0	0.3	6.6	-4.5	13.9	17.2	3.0	-4.0	17.7	9.0
June	12.0	19.1	1.3	1.9	0.8	5.9	-3.5	12.0	17.4	2.8	-5.0	17.1	9.4
July	11.5	19.0	1.2	1.8	1.1	5.3	-3.9	9.5	14.8	2.6	-6.0	16.4	9.7
August	10.3	18.2	1.1	1.7	1.1	4.6	-5.0	5.5	12.3	2.1	-7.0	15.9	9.7
September	9.1	16.6	0.9	1.7	1.3	4.1	-5.1	3.0	9.9	1.7	-8.0	14.6	9.7
October	8.3	15.5	0.9	1.6	1.8	3.4	-4.4	1.7	8.4	2.1	-9.0	13.5	9.6
November	8.0	15.5	0.8	1.8	1.3	3.1	-3.9	0.7	7.2	2.1	-10.0	12.2	9.3
December	7.9	15.9	0.8	1.9	0.8	3.1	-3.4	0.0	6.0	1.9	-11.0	10.9	8.9
2024													
January	7.3	15.1	0.7	2.1	0.3	3.2	-2.4	-0.8	5.0	1.9	-12.0	10.2	8.4
February	6.6	13.7	0.7	2.5	-0.1	3.2	-0.7	-1.0	4.0	1.7	-11.1	9.4	8.0
March	5.9	12.5	0.4	2.4	-0.5	3.4	0.8	-1.2	3.0	1.7	-10.2	8.1	7.1
April (P)	5.1	10.7	0.4	2.2	-0.7	3.7	2.2	-1.1	2.1	1.4	-9.3	6.8	6.3

Source : Samoa Bureau Statistics

(P) : Provisional figures

Table 9 Consumer Price Index (Percentage change and Average Annual Inflation)

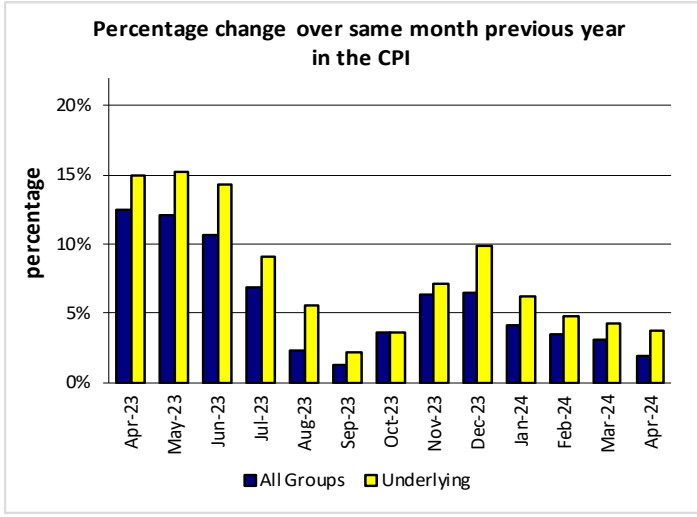
(Base Period: Average Prices February 2016 = 100)

	CPI ALL ITEMS	Percentage change over previous month	Last 12 months over previous 12 months	UNDERLYING ALL ITEMS	Percentage change over previous month	Last 12 months over previous 12 months	LOCAL COMPONENT	Percentage change over previous month	Last 12 months over previous 12 months	IMPORTED COMPONENT	Percentage change over previous month	Last 12 months over previous 12 months
2019	108.3	-	1.0	107.2	-	0.5	105.5	-	2.8	111.1	-	-0.7
2020	106.6	-	-1.6	106.6	-	-0.5	105.3	-	-0.2	107.9	-	-2.9
2021	109.9	-	3.1	110.1	-	3.2	105.9	-	0.6	114.0	-	5.7
2022	122.0	-	11.0	122.9	-	11.6	112.6	-	6.3	131.5	-	15.3
2023	131.6	-	7.9	135.4	-	10.2	122.2	-	8.5	141.3	-	7.4
2023												
April	131.8	1.6	11.7	135.0	0.4	13.4	122.8	3.1	8.2	141.1	0.2	15.1
May	131.5	-0.2	12.0	135.2	0.1	13.9	121.8	-0.8	8.7	141.5	0.3	15.0
June	133.9	1.8	12.0	137.7	1.9	14.2	123.9	1.8	9.2	144.2	1.9	14.5
July	134.0	0.0	11.5	138.2	0.4	13.7	124.9	0.8	9.4	143.2	-0.7	13.3
August	132.8	-0.9	10.3	136.7	-1.1	12.9	125.0	0.0	9.3	140.8	-1.6	11.2
September	131.8	-0.8	9.1	135.5	-0.9	11.5	123.6	-1.1	9.0	140.1	-0.5	9.2
October	132.3	0.4	8.3	135.8	0.2	10.4	122.7	-0.7	8.9	142.1	1.5	7.8
November	132.4	0.1	8.0	135.1	-0.6	10.1	123.1	0.3	8.9	142.0	-0.1	7.3
December	132.0	-0.3	7.9	136.7	1.2	10.2	122.3	-0.7	8.5	142.0	0.0	7.4
2024												
January	133.4	1.1	7.3	138.6	1.4	9.7	123.7	1.1	8.0	143.4	1.0	6.7
February	133.5	0.1	6.6	140.9	1.6	8.8	121.4	-1.8	7.5	145.9	1.7	5.9
March	133.8	0.2	5.9	140.3	-0.4	7.9	122.0	0.4	6.9	145.9	0.0	5.1
April (P)	134.4	0.4	5.1	140.1	-0.1	7.0	122.7	0.6	5.9	146.3	0.3	4.4

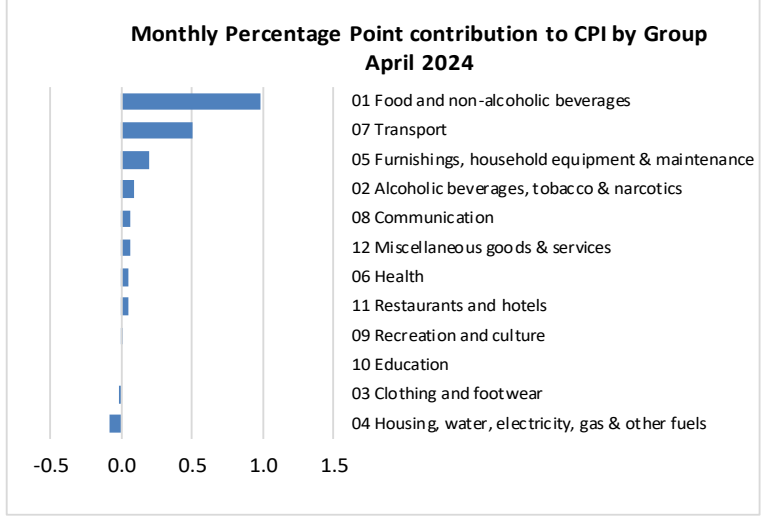
Source : Samoa Bureau Statistics

(P) : Provisional figures

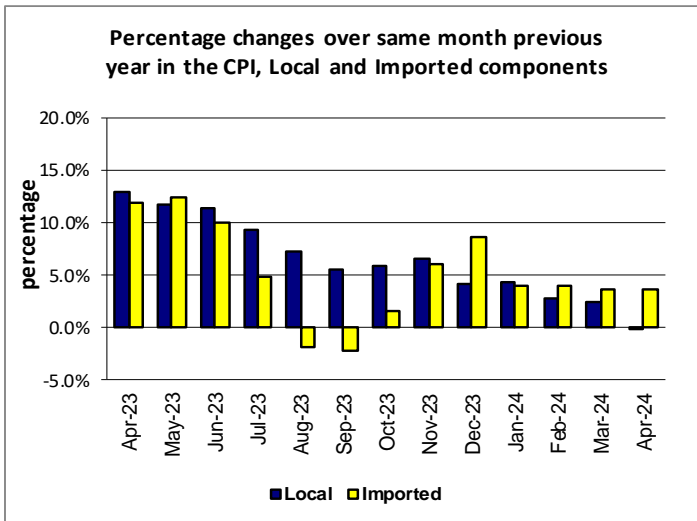
Graph.5



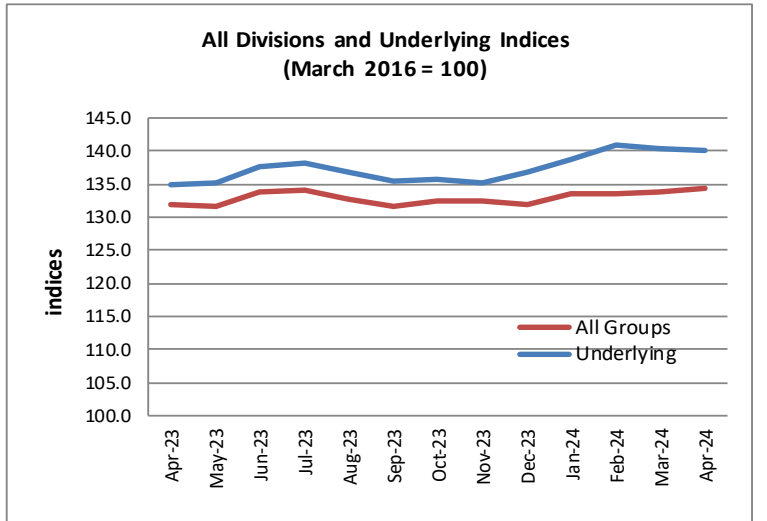
Graph.6



Graph.7



Graph.8



Graph.9

