



# CONSUMER PRICE INDEX

## APRIL 2026

### MONTHLY HIGHLIGHTS

April 2026 compared to April 2025:

❖ **The Consumer Price Index decreased by 0.5%.**

❖ **The most significant price decreases were:**

✓ Food & Non-Alcoholic beverages (-1.1%)

✓ Communication (-5.0%)

✓ Transport (-1.3%)

❖ **The CPI increased by 0.9% from March 2026**

❖ **The Average Annual Inflation was 1.0%**

Date of release:  
 15<sup>th</sup> of May 2026

The next Consumer Price Index will be released on the 15<sup>th</sup> of June 2026

### SUMMARY

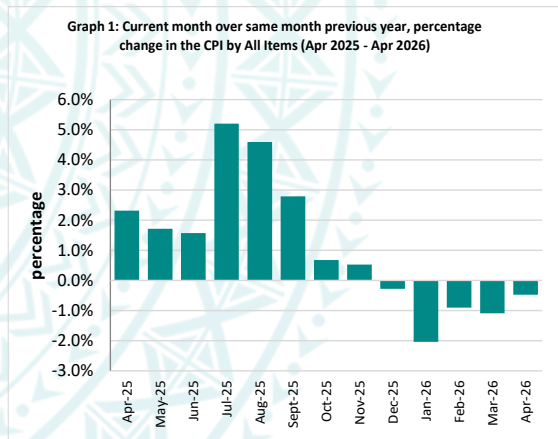
The Consumer Price Index (CPI) for April 2026 decreased by 0.5 percent compared with April 2025. However, compared with March 2026, the CPI increased by 0.9 percent, reflecting rising prices for major food items, petrol, and other imported goods during the month.

The decrease recorded compared with April 2025 was mainly driven by Food & Non-Alcoholic Beverages, Communication, and Transport, reflecting lower prices for taro, fish, raw sugar, rice, internet data bundles, petrol, and car tyres.

The **Imported** goods component decreased by 2.5 percent, reflecting lower prices for raw sugar, milk, Nike sports shoes, timber and cement.

The **Local** goods component also declined slightly by 0.2 percent, due to reduced prices for fresh fish, taro, Chinese cabbage, and koko samoa.

Graph 1 shows the percentage changes in the CPI over the same month of the previous year across all divisions from April 2025 to April 2026.



### All Divisions' Contribution to CPI

In April 2026, the Food & Non-Alcoholic Beverages division was the largest contributor to the 0.5 percent decrease in the CPI, accounting for -0.5 percentage points of the overall change. The decrease was mainly driven by lower prices for raw sugar (down 9.7 percent), rice (down 6.3 percent), taro (down 11.3 percent), and fish (down 2.9 percent).

Communication was the second-largest contributor to the overall decrease in the CPI, mainly reflecting lower prices for internet data bundles (down 11.2 percent).

The Transport division also contributed to the decrease, driven by lower prices for petrol (down 7.8 percent), diesel (down 2.5 percent), and car tyres (down 1.7 percent).

Housing, Water, Electricity, Gas and Other Fuels also contributed to the overall decline in the CPI, mainly due to lower prices for kerosene (down 3.9 percent), white paint (down 4.2 percent) and timber (down 4.4 percent).

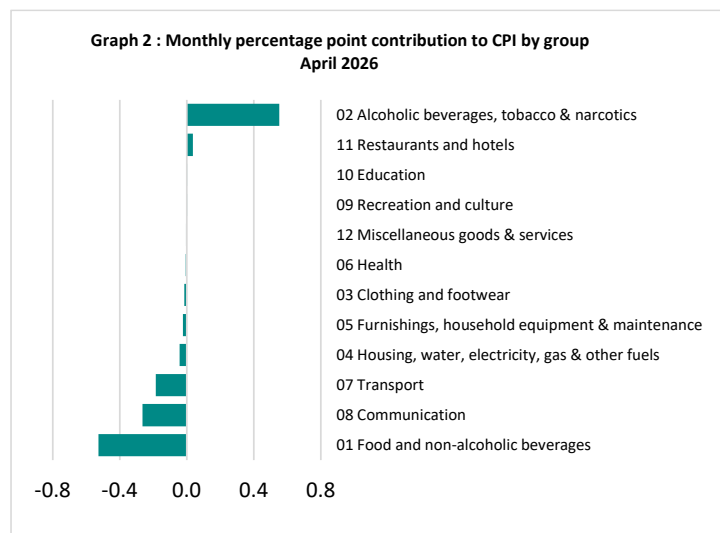
The Furnishings, Household Equipment & Maintenance, and Clothing & Footwear each recorded a small contribution of -0.02 percentage points to the overall CPI decrease. This was mainly attributed to lower prices for washing powder (down 6.4 percent), refrigerator (down 7.0 percent) and Nike sports shoes (down 12.7 percent).

The Health division contributed -0.1 percentage points to the overall decline. This reflected lower prices for amoxicillin (down 5.9 percent).

In contrast, the Alcoholic Beverages, Tobacco & Narcotics, and Restaurants divisions recorded price increases that partially offset the overall decline in the CPI. These increases were driven by higher prices for Pall Mall cigarettes (up 9.0 percent), paper cigarettes (up 5.7 percent), and fish & chips meal (up 6.3 percent).



Graph 2 shows the percentage contribution of All Divisions to the CPI in April 2026.



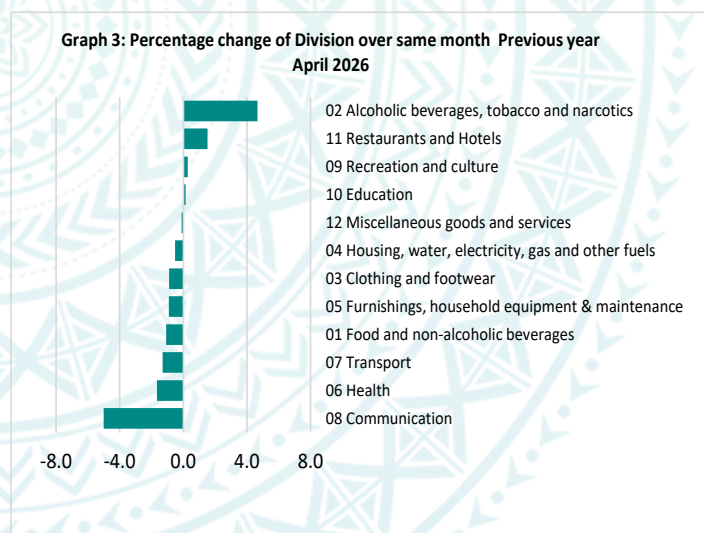
### Consumer Price Index (% Change)

The largest percentage change by division over the same month of the previous year was observed in Communication, which declined by 5.0 percent. This was followed by Health, which fell by 1.7 percent, while Transport fell by 1.3 percent and Food & Non-Alcoholic Beverages also declined by 1.1 percent. Similarly, Furnishings, Household Equipment & Maintenance, and Clothing and Footwear both recorded declines of 0.9 percent.

In addition, Housing, Water, Electricity, Gas and Other Fuels decreased by 0.5 percent, while Miscellaneous declined by 0.1 percent.

In contrast, the Education division recorded modest growth of 0.1 percent. Recreation and Culture, and Restaurants increased by 0.3 and 1.5 percent respectively. Notably, Alcoholic Beverages, Tobacco & Narcotics recorded the highest increase at 4.7 percent.

Graph 3 shows the percentage change for all Divisions in April 2026 compared to April 2025.



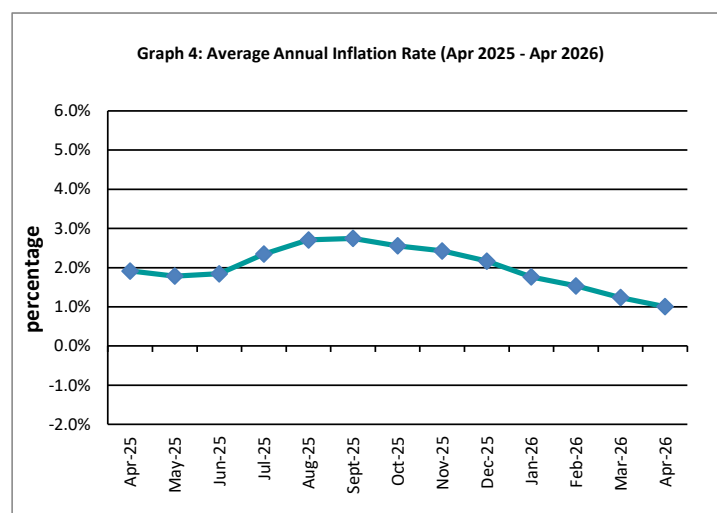
### Underlying Indices

The All Items Underlying Index increased by 0.1 percent in April 2026 compared with April 2025 and also increased by 1.6 percent compared with March 2026. The Imported Items Underlying Index slightly increased by 0.3 percent, however, the Local Items Underlying Index decreased by 0.3 percent.

### Annual Inflation Rate

The average annual inflation rate for the year ending April 2026 was 1.0 percent. In contrast, the inflation rate for the twelve months ending April 2025 was 1.9 percent.

Graph 4 presents the average annual inflation rates from April 2025 to April 2026.



The attached Tables and Graphs provide a more detailed analysis.



## **Technical Notes:**

The **Consumer Price Index (CPI)** measures the rate of inflation for Samoa. It tracks the change in prices of goods purchased by households in Samoa by comparing the prices of a basket of goods and services during the collection period with the prices of the same items in a base period.

The basket of goods used for pricing is based on the average expenditures of households as recorded in the **Household Income and Expenditure Survey (HIES)**. This survey identifies the typical spending patterns of households. Items that households spend more on, on average, are given greater weight in the CPI index.

<sup>1/</sup> **Monthly movements in the 'headline' CPI** can be volatile. This volatility reflects price changes in specific items, which may be influenced by factors such as fluctuations in commodity markets, agricultural conditions, policy changes, or seasonal adjustments and infrequent price resets.

**Underlying inflation** is a measure of inflation that excludes certain items with volatile price movements. It eliminates products that experience temporary price shocks, as these shocks can distort the overall inflation trend and provide an inaccurate measure of long-term inflation.

## **SAMOA BUREAU OF STATISTICS**

*Economic Statistics Division  
FMFM II Building, Level 1  
P O Box 1151  
Apia, Samoa*

*Phone: (685) 62014/62015*

*Fax: (685) 24675*

*E-mail: [info.stats@sbs.gov.ws](mailto:info.stats@sbs.gov.ws)*

*Website: [www.sbs.gov.ws](http://www.sbs.gov.ws)*





# FUA FA'ATATAU O TAU O OLOA MA AUAUNAGA APERILA 2026



## ILOILOGA TAUU O LE MASINA:

Aperila 2026 faatusa ia  
Aperila 2025:

❖ O Fua Faatatau o Tau o Oloa ma Auaunaga na paū i le 0.5%

❖ O Ienei paū ua faamauina mo tau o:

- ✓ Meaai ma Vaiinu (-1.1%)
- ✓ Fesootaiga (-5.0%)
- ✓ Femalagaiga (-1.3%)

❖ O Fua faatatau o Oloa ma Auaunaga na siitia i le 0.9% mai ia Mati 2026

❖ O le fesuiaiga o Tau o Oloa ma Auaunaga i le tausaga na si'itia i le 1.0%.

Tuuina atu i le aso:  
15 Me, 2026

O le ripoti mo le Fua Faatatau o Oloa ma Auaunaga e sosoo ai, o le a tuuina atu i le aso 15 Iuni, 2026

## AOTELEGA

O le Fuafa'atatau o Tau o Oloa ma Auaunaga mo le masina o Aperila 2026 na paū i le 0.5 pasene pe a fa'atusa ia Aperila 2025.

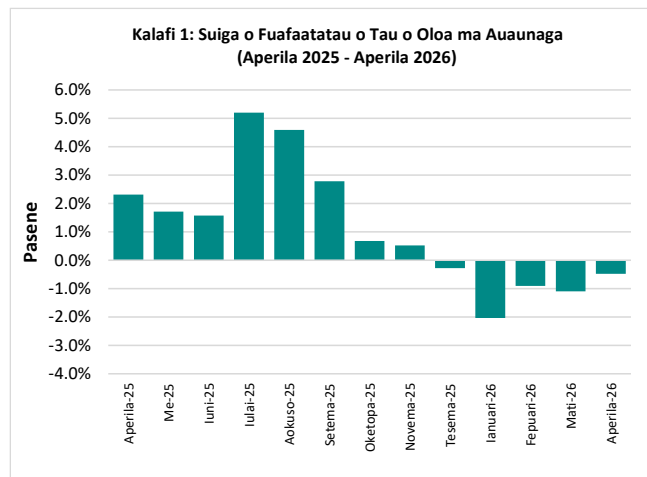
A fa'atusa ia Mati 2026, na si'itia le fuafa'atatau o tau o oloa ma auaunaga i le 0.9 pasene, mafua mai i le si'itia o tau o nisi o meaai ma oloa pei o le penisini i le masina.

O le paū na faamauina pe a faatusa ia Aperila 2025, sa tele le sao o vaega o Meaai ma Vaiinu, Feso'otaiga faapea ma Femalagaiga. E mafua mai i le paū o tau o fua o faatoaga, suka, araisa, tau 'ia, fesootaiga tau initaneti, penisini, ma pa'u taavale.

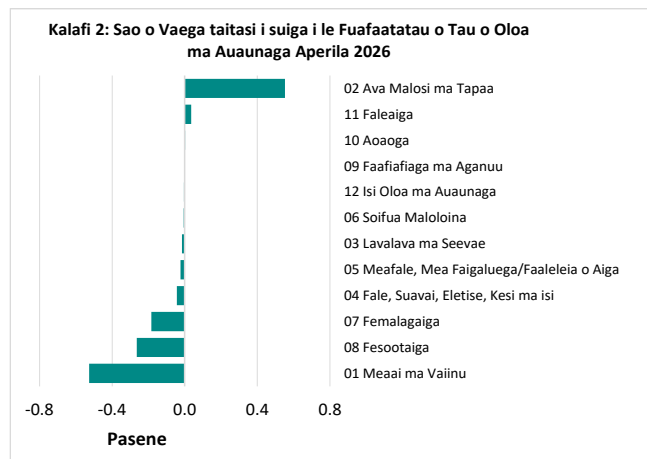
O 'oloa auina mai fafo ua fa'amauina le paū i le 2.5 pasene e mafua mai i le maualalo o tau na fa'amauina mo seevae koleni, penisini, laupapa, ma simā.

O 'oloa gaosi ma auaunaga i totonu o le atunuu sa pa'ū i le 0.2 pasene pea faatusa atu ia Aperila 2025. E mafua mai ona o le maualalo o tau na faamauina mo tau 'ia, taro, kapisi saina, ma koko Samoa.

O le Kalafi 1 o lo'o fa'aali atu ai suiga o tau o oloa ma auaunaga mai ia Aperila 2025 se'ia oo mai ia Aperila 2026.



O le Kalafi 2, o le sao o Vaega taitasi i le paū ai o Fua faatatau o Oloa ma Auaunaga ia Aperila 2026.



O Ava Malosi ma Tapaa, Faleaiga, ma Aoaoga sa maitauina le siitia o tau ia Aperila 2026.

O le vaega o Meafale, Mea faigaluega/Faaleleia o Aiga, ma Lavalava ma Seevae e le'i tele se siitaga o tau i le masina o Aperila 2026.

Ao le itu tau Meaai ma Vai inu, Fesootaiga, ma Femalagaiga sa paū maualalo o latou tau pea faatusa ia Aperila 2025.

