

Please address all correspondence
To Government Statistician
In reply, please quote the file reference



GOVERNMENT OF SAMOA

File Ref: CPI 11/2019

SAMOA BUREAU OF STATISTICS

CONSUMER PRICE INDEX NOVEMBER 2019

Key findings:

The Consumer Price Index for November 2019 decreased by 0.1 percent compared to the previous month.

- The Food and Non Alcoholic Beverages index decreased by 1.2 percent.
- The Recreation and Culture index increased by 2.7 percent.
- The Transport index also increased by 2.6 percent.
- The Average Annual Inflation for the year ended November 2019 was 0.9 percent.

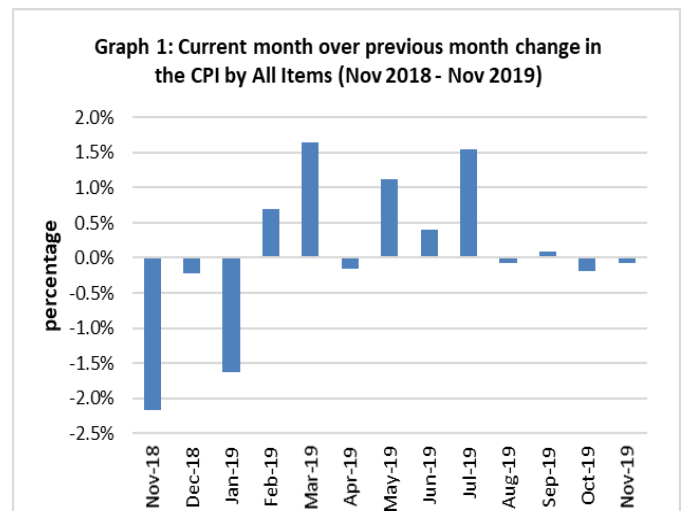
In the year to November 2019, the CPI rose 3.1 percent.

SUMMARY

The Consumer Price Index for November 2019 was 0.1 percent lower than in October 2019 and was 3.1 percent higher than November 2018.

The decrease of the Local Goods component by 0.3 percent from the previous month was due to lower prices for local food, which were also the main contributors to the decrease of 0.1 percent in the All Items Consumer Price Index.

The Imported Goods Component registered an increase of 0.2 percent from the previous month. Graph 1 shows the month to month percentage changes in the Consumer Price Index by all Divisions from November 2018 to November 2019.

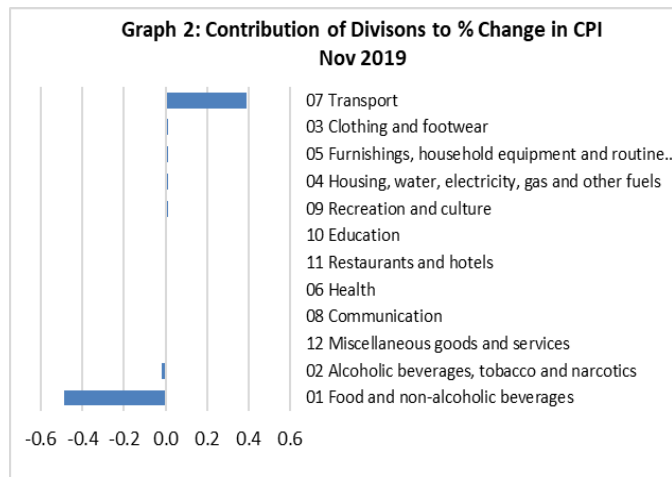


Source : Samoa Bureau of Statistics

Total All Divisions Contribution

As depicted in Graph 2, Food and Non Alcoholic Beverages division, with a negative contribution of 0.49 percent, was the main contributor to the overall decrease of 0.1 percent in the All Division Consumer Price Index.

On the other hand, there were offsetting positive contributions from Transport with 0.39 percent increase.



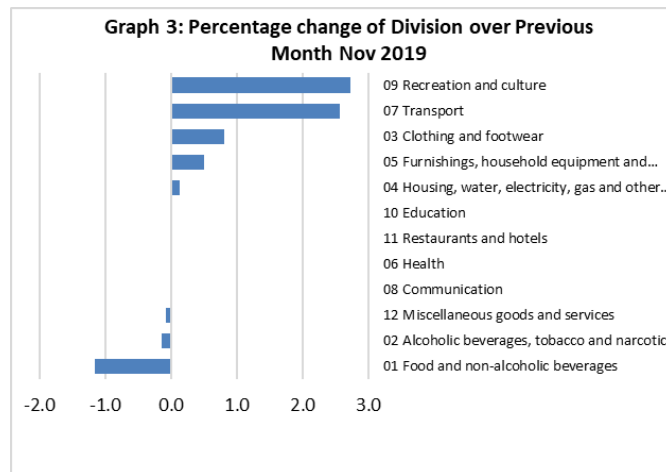
Source : Samoa Bureau of Statistics

Consumer Price Index (% Change)

The 0.1 percent decrease in the Overall Index was mainly due to a decrease of 1.2 percent in the Food and Non Alcoholic Beverages index, while Alcoholic Beverages and Tobacco and Miscellaneous Goods and Services both showed decreases of 0.1 percent.

On the other contrary, increases were registered for Recreation and Culture index with 2.7 percent, Transport index with 2.6 percent, Clothing and Footwear with 0.8 percent, Furnishing, Household Equipment and Maintenance index with 0.5 percent and Housing, Water, Electricity, Gas and other Fuels index with 0.1 percent respectively.

No changes were recorded for the Health, Communication, Education and Restaurants indices. Graphically presented in Graph 3 is the November 2019 percentage change for all divisions from October 2019.



Source : Samoa Bureau of Statistics

Local Goods Component

The Local Goods Component of the Consumer Price Index registered a decrease of 0.3 percent when compared to the previous month. This decrease was mainly due to lower prices recorded for fresh fish (piece and large), koko samoa, banana, cucumber, tomato, taamu and head cabbage.

Imported Goods Component

Increased prices recorded for turkey wings and corned beef have resulted in the 0.2 percent increase in the Imported Good Component.

Food and Non Alcoholic Beverages Index

Lower prices recorded for chicken leg quarter, mutton flap, fresh fish (piece and large), koko samoa, banana, cucumber, tomato, taamu and head cabbage is reflected in the 1.2 percent decrease in the Food and Non Alcoholic Beverages index.

Recreation and Culture Index

The 2.7 percent increase in the Recreation and culture index was a result of the higher prices recorded for LCD television and exercise book.

Transport Index

An increase of 2.6 percent in the Transport index was a reflection of the higher prices recorded for fuel (petrol and diesel) and airline fare (Apia-Auckland-Apia).

Clothing and Footwear Index

Higher prices recorded for school uniform (pa'ave) and ie faitaga is reflected in the 0.8 percent increase in the Clothing and Footwear index.

Furnishings, Household Equipment, and Maintenance Index

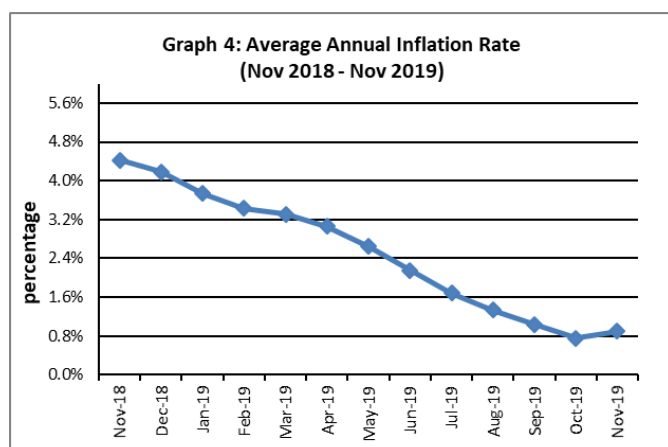
Increased prices recorded for washing powder, washing soap and tumbler glass is reflected in the 0.5 percent increase in the Furnishing, Household, Equipment and Maintenance index.

Underlying Indices ^{1/}

The All Items Underlying Index for November 2019 registered a decrease of 0.2 percent when compared to October 2019, and an increase of 3.3 percent when compared to November 2018. The Imported Items Underlying Index registered a decrease of 0.4 percent, while the Local Items Underlying Index recorded no change from the previous month.

Inflation Rate

The average annual inflation rate for the year ended November 2019 was 0.9 percent. For the twelve months ending November 2018 the inflation rate was 4.4 percent. Presented in Graph 4 is the average annual inflation rate (November 2018 - November 2019).



Source : Samoa Bureau of Statistics

The attached Tables and Graphs provide the user with more detailed analysis.

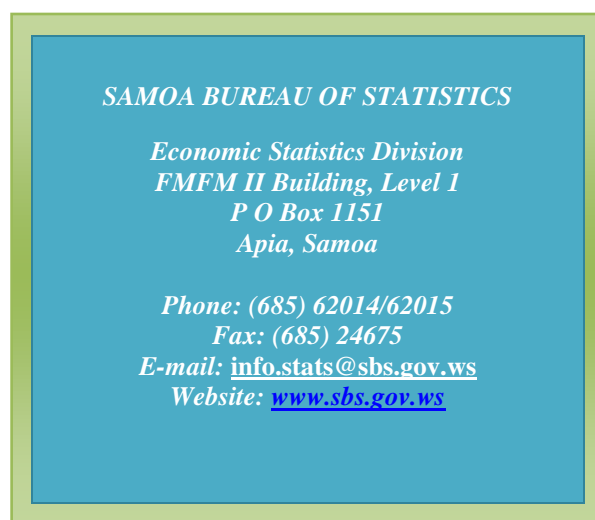
Technical Notes:

The Consumer Price (CPI) measures the rate of inflation for Samoa. It is designed to measure the change in prices for the goods purchased by households in Samoa. The CPI measures the change in prices by comparing the prices for a basket of goods and services at the collection period with the price for the same goods in a base period.

The basket of goods that is priced is based on the average expenditures of households as recorded in the Household Income and Expenditure Survey (HIES). The HIES survey identifies how much households spend on different items. The more households spend on an item on average, the more important it is to the price index, and the higher the weight in the index.

^{1/} Monthly movements in the 'headline' CPI series can be volatile. This volatility reflects price changes in particular items that may be due, among other factors, to fluctuations in commodity markets and agricultural conditions, policy changes, or seasonal or infrequent price resetting.

Underlying inflation is a measure of inflation that excludes certain items that face volatile price movements. Underlying inflation eliminates products that can have temporary price shocks because these shocks can diverge from the overall trend of inflation and give a false measure of inflation.



Date of release: 12th December 2019.

The next Consumer Price Index will be released on 14th January 2020.

Aliimuamua Malaefono Tauā - T.Faasalaina
GOVERNMENT STATISTICIAN/(CEO)

Table 1. CONSUMER PRICE INDEX.

(Base Period : Average Prices February 2016 = 100)

Group	All Items	Food and Non Alcoholic Beverages	Alcoholic Beverages, Tobacco and Narcotics	Clothing and Footwear	Housing, Water, Electricity, Gas and other Fuels	Furnishings, Household Equipment, and Maintenance	Health	Transport	Communication	Recreation and Culture	Education	Restaurants	Miscellaneous goods and services
<i>Weights</i>	1000.0	403.7	128.4	21.2	119.6	30.8	4.6	148.5	51.5	6.1	19.7	22.4	43.5
<i>Ave - 2016</i>	101.1	103.7	102.8	98.8	92.6	99.4	99.2	101.3	100.0	95.4	101.1	99.3	100.6
<i>Ave - 2017</i>	102.9	105.1	107.6	96.6	92.2	99.1	95.6	107.3	101.2	90.7	97.9	98.3	98.1
<i>Ave - 2018</i>	107.2	111.0	112.3	95.3	91.0	98.0	97.0	115.0	103.3	92.6	110.4	99.0	97.8
2018													
November	106.5	108.1	113.6	96.2	89.7	97.6	98.5	117.8	103.4	92.3	111.6	100.6	98.0
December	106.3	107.0	113.6	96.3	89.6	96.8	99.9	119.3	102.9	90.9	111.6	100.6	98.2
2019													
January	104.6	106.0	115.4	93.7	89.4	97.6	99.9	109.3	102.9	91.0	111.6	100.6	98.1
February	105.3	108.3	116.3	95.2	89.0	96.2	99.9	107.5	102.9	91.0	110.5	100.6	98.5
March	107.0	111.3	116.8	94.7	93.3	95.5	100.1	106.4	105.2	89.8	110.6	102.8	98.3
April	106.8	110.3	116.3	95.0	93.4	95.2	100.1	108.2	105.2	90.1	110.6	103.4	98.0
May	108.0	111.6	115.9	95.3	93.6	93.6	100.1	113.1	104.3	88.2	114.9	103.4	98.0
June	108.5	111.2	116.0	95.9	93.6	95.8	100.1	116.8	104.3	87.1	114.9	103.4	97.2
July	110.1	114.7	117.7	92.2	98.3	97.4	100.1	113.3	104.3	87.1	114.9	103.4	97.4
August	110.1	116.0	117.7	92.2	97.9	97.0	100.1	109.4	104.3	87.1	114.9	103.4	97.9
September	110.1	115.3	117.5	92.1	98.1	97.3	100.1	112.3	104.3	87.1	114.9	103.4	97.5
October	109.9	114.6	117.7	92.3	98.1	96.8	100.1	112.6	104.3	87.1	114.9	103.4	97.5
November (P)	109.9	113.2	117.5	93.0	98.2	97.3	100.1	115.5	104.3	89.5	114.9	103.4	97.4
<u>Percentage Change (P)</u>													
Nov 2019 over Oct 2019	-0.1%	-1.2%	-0.1%	0.8%	0.1%	0.5%	0.0%	2.6%	0.0%	2.7%	0.0%	0.0%	-0.1%
Nov 2019 over Nov 2018	3.1%	4.8%	3.4%	-3.3%	9.6%	-0.3%	1.6%	-1.9%	0.9%	-3.0%	3.0%	2.7%	-0.6%

Source : Samoa Bureau Statistics

(P) : Provisional figures

Note : n.a. Not applicable

Table 2. ALL ITEMS UNDERLYING INDEX

(Base Period : Average Prices February 2016 = 100)

Group	All Items	Food and Non Alcoholic Beverages	Alcoholic Beverages, Tobacco and Narcotics	Clothing and Footwear	Housing, Water, Electricity, Gas and other Fuels	Furnishings, Household Equipment, and Maintenance	Health	Transport	Communication	Recreation and Culture	Education	Restaurants	Miscellaneous goods and services
<i>Weights</i>	586.7	345.3	<i>n.a</i>	21.2	24.2	30.8	3.5	26.4	51.5	5.6	12.3	22.4	43.5
Ave - 2016	101.7	103.2		98.8	97.5	99.4	99.0	100.2		95.0		99.3	100.6
Ave - 2017	104.1	107.9		96.6	93.8	99.1	94.2	104.2	101.2	90.0	96.7	98.3	98.1
Ave - 2018	106.6	110.8		95.3	93.4	98.0	96.0	110.8	103.3	92.0	114.0	99.0	97.8
2018													
November	105.5	108.8		96.2	94.5	97.6	98.0	107.8	103.4	91.7	115.6	100.6	98.0
December	103.1	105.0		96.3	94.1	96.8	99.8	108.2	102.9	90.2	115.6	100.6	98.2
2019													
January	102.0	103.2		93.7	94.5	97.6	99.8	107.5	102.9	90.3	115.6	100.6	98.1
February	104.8	108.0		95.2	94.9	96.2	99.8	106.5	102.9	90.3	113.9	100.6	98.5
March	106.5	110.5		94.7	94.7	95.5	100.1	107.4	105.2	89.0	113.9	102.8	98.3
April	106.1	109.8		95.0	94.6	95.2	100.1	108.4	105.2	89.3	113.9	103.4	98.0
May	106.4	110.3		95.3	94.6	93.6	100.1	108.4	104.3	87.3	120.6	103.4	98.0
June	106.7	110.8		95.9	94.1	95.8	100.1	108.4	104.3	86.2	120.6	103.4	97.2
July	108.4	113.7		92.2	94.5	97.4	100.1	108.4	104.3	86.2	120.6	103.4	97.4
August	109.1	114.9		92.2	94.5	97.0	100.1	108.4	104.3	86.2	120.6	103.4	97.9
September	109.4	115.4		92.1	94.4	97.3	100.1	109.1	104.3	86.2	120.6	103.4	97.5
October	109.3	115.1		92.3	94.8	96.8	100.1	109.1	104.3	86.2	120.6	103.4	97.5
November (P)	109.0	114.5		93.0	94.8	97.3	100.1	109.1	104.3	88.7	120.6	103.4	97.4
<u>Percentage Change (P)</u>													
Nov 2019 over	-0.2%	-0.5%		0.8%	0.0%	0.5%	0.0%	0.0%	0.0%	3.0%	0.0%	0.0%	-0.1%
Oct 2019 over													
Nov 2019 over	3.3%	5.2%		-3.3%	0.3%	-0.3%	2.2%	1.2%	0.9%	-3.3%	4.4%	2.7%	-0.6%
Nov 2018 over													

Source : Samoa Bureau Statistics

(P) : Provisional figures

Note : n.a. Not applicable

Table 3. AVERAGE RETAIL PRICES OF SELECTED COMMODITIES

Commodities	Wt	Unit	2018			2019		
			Sep	Oct	Nov	Sep	Oct	Nov (P)
01 Food and non-alcoholic beverages								
Leg Quarters Chicken	62.2	kg	4.56	4.50	4.01	5.01	4.97	4.88
Raw Sugar	21.3	kg	2.74	2.68	2.63	2.48	2.45	2.42
Bread	17.2	loaf	1.66	1.68	1.68	1.72	1.69	1.67
Corned Beef (a)	15.9	12 oz	8.13	8.15	8.15	8.03	8.03	8.03
Taro	15.2	kg	2.92	2.66	2.66	2.86	2.47	2.56
Re-packed medium grain rice	13.4	kg	3.14	3.23	3.21	3.01	2.93	2.94
Prepacked medium grain rice (a)	13.4	907g	3.05	3.08	3.08	3.10	3.03	2.97
Canned fish betw een \$3.00 and \$3.99 Natural Oil	12.7	15 oz	3.47	3.45	3.45	3.27	3.37	3.37
Bongo	10.2	20grms	0.84	0.84	0.82	0.80	0.80	0.80
Keke Saina Biscuits (a)	9.2	pkt 10	6.58	6.50	6.50	6.27	6.18	6.27
Tip Top Ice Cream (a)	9.2	2 ltr	15.32	15.07	15.07	15.33	15.18	15.18
Ramen maggie	9.0	85gms	1.11	1.10	1.10	1.08	1.07	1.09
Fish (Piece)	7.9	kg	19.43	21.92	18.21	17.31	20.39	17.27
Butter Anchor	7.7	454g	13.46	13.46	13.46	15.49	15.77	15.77
Round Pancake (a)	7.5	sml	0.15	0.15	0.15	0.15	0.15	0.15
Mutton Flaps	6.6	kg	22.10	22.01	21.92	22.62	22.11	21.50
Canned fish \$4:00 or over N/Oil	6.4	15 oz	4.83	4.78	4.75	4.84	4.87	4.89
Canned fish under \$3.00 in N/Oil	6.4	15 oz	2.82	2.83	2.78	2.58	2.60	2.62
Wings Turkey	6.3	kg	6.04	6.36	6.15	6.30	7.21	8.20
Fish (string)	6.0	kg	10.66	11.75	9.81	12.54	10.96	10.81
Fish (large)	6.0	kg	17.93	16.28	16.28	19.81	19.57	15.61
02 Alcoholic beverages, tobacco and narcotics								
Lager Beer	37.9	355 mls	3.56	3.55	3.54	3.58	3.60	3.58
Pall Mall Filter Cigarettes (Red)	24.3	20 rolls	13.00	13.00	13.00	13.80	13.80	13.80
Pall Mall Menthol Cigarettes (Green)	24.3	20 rolls	13.00	13.00	13.00	13.80	13.80	13.80
Beer (a)	16.3	330 mls	3.35	3.35	3.35	3.36	3.36	3.38
Winfield Tobacco (a)	12.6	packet	15.00	15.00	15.00	15.00	15.00	15.00
03 Clothing and footwear								
Uniform le Faitaga College boys	4.3	size 8-10	31.33	31.33	31.33	29.67	29.67	29.67
Uniform Pa'ave (a)	3.7	size 7	32.67	34.33	34.67	32.00	31.00	32.00
04 Housing, water, electricity, gas and other fuels								
Electricity / Cashpower / kw h 1- 100 / total cost per t	50.6	kw h	0.67	0.70	0.58	0.67	0.67	0.67
Reservoir treated Water	28.5	15-40 m3	1.40	1.40	1.40	1.67	1.67	1.67
Liquid gas	15.8	9kg	61.00	62.00	62.00	62.00	62.00	62.00
Government house Rent	12.2	2 b/room	650.00	650.00	650.00	650.00	650.00	650.00
05 Furnishings, household equipment and routine household maintenance								
Washing powder (a)	6.3	200g	1.81	1.79	1.79	1.90	1.84	1.86
Soap yellow Washing soap	5.9	bar	2.88	2.85	2.85	2.76	2.76	2.85
Mosquito coil	4.4	10 coil	1.25	1.28	1.28	1.20	1.20	1.20

06 Health

Amoxicillin mg Tablets (a)	2.5	500 mg	7.53	7.53	7.53	7.58	7.58	7.58
Hospital Charge	1.1	night	22.50	22.50	22.50	22.50	22.50	22.50

07 Transport

Petrol	60.8	1 ltr	2.85	2.88	2.97	2.64	2.62	2.69
Taxi Fare PO Motootua Hosp	8.2	per trip	4.80	4.80	4.80	4.80	4.80	4.80
Taxi Fares PO Malua	8.2	per trip	31.30	31.30	31.30	31.30	31.30	31.30
Taxi Fares PO Falefa	8.2	per trip	43.20	43.20	43.20	43.20	43.20	43.20
Air Fares Fagalii Pago Fagalii	6.8	return trip	395.00	395.00	395.00	395.00	395.00	395.00
Air Fares Apia Auckland Apia	6.8	1 month	1288.90	1640.47	1271.10	1443.92	1651.54	2093.29

08 Communication

Calling per minute Rate cell phone (a)	10.02	per minute	0.45	0.45	0.45	0.43	0.43	0.43
Internet data bundles per mb Rate (a)	10.02	per mb	0.25	0.25	0.25	0.25	0.25	0.25
Calling per minute Rate cell phone (a)	10.02	per minute	0.44	0.44	0.44	0.44	0.44	0.44
Internet data bundles per mb Rate (a)	10.02	per mb	0.20	0.20	0.20	0.20	0.20	0.20

09 Recreation and culture

Television (a)	2.30	LCD	968.83	1010.67	1010.67	827.67	827.67	861.00
Exercise Book w arw ick	1.44	1B4 64 pa	1.37	1.45	1.37	1.37	1.37	1.47
Laptop (a)	1.33	each	2998.60	2878.60	2842.00	2918.60	2918.60	2918.60

10 Education

Fees PTA Primary Y Urban Registration fees (a)	7.23	Year 6	82.50	82.50	82.50	82.50	82.50	82.50
Fees PTA Secondary Y Urban Registration fees (a)	5.11	Year 10	52.00	52.00	52.00	58.00	58.00	58.00
Fees Tertiary NUS registration School Fees	3.79	registratio	320.00	320.00	320.00	322.00	322.00	322.00
Fees Secondary Y Examination Fees (a)	3.61	Y12-13	25.50	25.50	25.50	25.50	25.50	25.50

11 Restaurants and hotels

Fish & Chip Meal	7.79	1 serve	9.17	9.17	9.17	9.17	9.17	9.17
Curry & Chopsuey Meal	4.87	1 serve	3.00	3.00	3.33	3.67	3.67	3.67
Chicken & Chips Meal (a)	4.87	1 serve	9.36	9.36	9.36	9.64	9.64	9.64
Steam rice & chicken Meal (a)	4.87	1 serve	4.83	4.83	4.83	4.83	4.83	4.83

12 Miscellaneous goods and services

Paper Sofan deluxe ply Toilet Paper	8.52	250 sheet	1.01	1.01	1.01	0.99	0.99	0.96
Hair Gel	4.59	1124ml	4.34	4.34	4.36	4.40	4.40	4.60
Price for Storage of remains (a)	4.41	per day	60.00	60.00	60.00	60.00	60.00	60.00
Basic Casket (a)	4.41	each	1966.67	1966.67	1966.67	1966.67	1966.67	1966.67
Standard Embalming (a)	4.41	1 person	1500.00	1500.00	1500.00	1500.00	1500.00	1500.00
Toilet soap (a)	4.38	90g	1.85	1.85	1.85	1.96	1.96	1.96
Diapers (a)	4.19	5kg-10kg	9.36	9.36	9.36	8.99	8.99	8.99

Source : Samoa Bureau Statistics

(a) : New commodity from February 2016

(P) : Provisional figures

Note : Please note unit of conversion was in pound's (lb's) but been converted into kilograms (kg)

Table 4. IMPORTED GOODS COMPONENT OF THE CONSUMER PRICE INDEX
(Base Period : Average Prices February 2016 = 100)

Group	All Items	Food and Non Alcoholic Beverages	Alcoholic Beverages, Tobacco and Narcotics	Clothing and Footwear	Housing, Water, Electricity, Gas and other Fuels	Furnishings, Household Equipment and Maintenance	Health	Transport	Communication	Recreation and Culture	Education	Restaurants	Miscellaneous goods and services
<i>Weights</i>	494.7	269.1	23.8	15.2	28.3	26.9	2.5	88.6	<i>n.a</i>	5.6	<i>n.a</i>	<i>n.a</i>	34.7
Ave - 2016	102.5	103.9	105.1	98.8	98.7	99.3	98.5	101.8		95.0			100.7
Ave - 2017	107.3	110.1	110.0	97.0	97.6	98.9	91.7	111.2		90.0			97.1
Ave - 2018	111.9	113.8	113.5	96.1	100.6	97.6	94.3	124.0		92.0			96.6
2018													
November	111.7	111.1	115.0	97.2	103.0	97.2	97.1	129.6		91.7			96.9
December	108.6	106.2	115.0	97.6	102.9	96.3	99.8	127.3		90.2			97.2
2019													
January	105.2	103.9	115.0	94.5	101.8	97.2	99.8	116.3		90.3			97.0
February	107.4	110.0	116.6	95.4	100.0	95.6	99.8	110.4		90.3			97.5
March	109.2	113.2	119.5	94.8	99.8	94.8	97.5	110.3		89.0			97.2
April	109.3	112.4	119.6	95.1	100.5	94.5	97.5	113.4		89.3			96.9
May	110.6	112.7	119.3	95.5	101.2	92.6	97.5	120.3		87.3			96.9
June	111.9	113.5	119.3	96.3	101.2	95.2	97.5	124.2		86.2			95.9
July	113.4	117.0	119.7	91.2	101.5	96.9	97.5	122.0		86.2			96.2
August	112.8	118.5	118.2	91.2	100.0	96.5	97.5	114.9		86.2			96.8
September	113.8	119.1	118.1	91.3	100.7	96.8	97.5	118.8		86.2			96.2
October	113.5	118.8	117.9	92.4	100.8	96.3	97.5	118.1		86.2			96.2
November (P)	113.7	118.1	118.7	93.4	101.3	96.9	97.5	120.5		88.7			96.1
<u>Percentage Change (P)</u>													
Nov 2019 over Oct 2019	0.2%	-0.6%	0.7%	1.1%	0.5%	0.6%	0.0%	2.0%		3.0%			-0.1%
Nov 2019 over Nov 2018	1.8%	6.2%	3.2%	-3.9%	-1.7%	-0.3%	0.4%	-7.0%		-3.3%			-0.8%

Source : Samoa Bureau Statistics

(P) : Provisional figures

Note : n.a. Not applicable

Table 5. IMPORTED ITEMS UNDERLYING INDEX

(Base Period : Average Prices February 2016 = 100)

Group	All Items	Food and Non Alcoholic Beverages	Alcoholic Beverages, Tobacco and Narcotics	Clothing and Footwear	Housing, Water, Electricity, Gas and other Fuels	Furnishings, Household Equipment and Maintenance	Health	Transport	Communication	Recreation and Culture	Education	Restaurants	Miscellaneous goods and services
Weights	401.2	269.1	n.a	15.2	24.2	26.9	2.5	23.0	n.a	5.6	n.a	n.a	34.7
Ave - 2016	102.4	103.9		98.8	97.5	99.3	98.5	100.1		95.0			100.7
Ave - 2017	106.0	110.1		97.0	93.8	98.9	91.7	104.5		90.0			97.1
Ave - 2018	108.8	113.8		96.1	93.4	97.6	94.3	111.2		92.0			96.6
2018													
November	106.9	111.1		97.2	94.5	97.2	97.1	107.7		91.7			96.9
December	103.6	106.2		97.6	94.1	96.3	99.8	108.1		90.2			97.2
2019													
January	101.9	103.9		94.5	94.5	97.2	99.8	107.3		90.3			97.0
February	105.9	110.0		95.4	94.9	95.6	99.8	106.2		90.3			97.5
March	108.0	113.2		94.8	94.7	94.8	97.5	107.3		89.0			97.2
April	107.5	112.4		95.1	94.6	94.5	97.5	108.3		89.3			96.9
May	107.6	112.7		95.5	94.6	92.6	97.5	108.3		87.3			96.9
June	108.2	113.5		96.3	94.1	95.2	97.5	108.3		86.2			95.9
July	110.5	117.0		91.2	94.5	96.9	97.5	108.3		86.2			96.2
August	111.5	118.5		91.2	94.5	96.5	97.5	108.3		86.2			96.8
September	111.9	119.1		91.3	94.4	96.8	97.5	109.2		86.2			96.2
October	111.8	118.8		92.4	94.8	96.3	97.5	109.2		86.2			96.2
November (P)	111.4	118.1		93.4	94.8	96.9	97.5	109.2		88.7			96.1
<u>Percentage Change (P)</u>													
Nov 2019 over	-0.4%	-0.6%		1.1%	0.0%	0.6%	0.0%	0.0%		3.0%			-0.1%
Oct 2019 over	4.2%	6.2%		-3.9%	0.3%	-0.3%	0.4%	1.3%		-3.3%			-0.8%
Nov 2018 over													

Source : Samoa Bureau Statistics

(P) : Provisional figures

Note : n.a. Not applicable

Table 6. LOCAL GOODS COMPONENT OF THE CONSUMER PRICE INDEX
(Base Period : Average Prices February 2016 = 100)

Group	All Items	Food and Non Alcoholic Beverages	Alcoholic Beverages, Tobacco and Narcotics	Clothing and Footwear	Housing, Water, Electricity, Gas and other Fuels	Furnishings, Household Equipment and Maintenance	Health	Transport	Communication	Recreation and Culture	Education	Restaurants	Miscellaneous goods and services
Weights	505.3	134.6	104.6	6.0	91.3	3.9	2.2	59.9	51.5	0.4	19.7	22.4	8.8
Ave - 2016	99.7	102.5	102.3	98.6	90.7	100.0	100.0	100.5	100.0	100.0	101.1	99.3	
Ave - 2017	98.6	95.0	107.1	95.7	90.6	100.1	100.0	101.6	101.2	100.0	97.9	98.3	102.3
Ave - 2018	102.6	105.3	112.0	93.3	88.1	100.3	100.0	101.7	103.3	100.0	110.4	99.0	102.3
2018													
November	101.5	101.9	113.3	93.5	85.5	100.3	100.0	100.2	103.4	100.0	111.6	100.6	102.3
December	104.0	108.7	113.2	93.0	85.5	100.3	100.0	107.5	102.9	100.0	111.6	100.6	102.3
2019													
January	103.9	110.1	115.5	91.8	85.5	100.3	100.0	98.8	102.9	100.0	111.6	100.6	102.3
February	103.2	105.1	116.2	94.8	85.5	100.3	100.0	103.2	102.9	100.0	110.5	100.6	102.3
March	104.9	107.5	116.2	94.2	91.3	100.3	103.0	100.7	105.2	100.0	110.6	102.8	102.3
April	104.4	106.2	115.6	94.6	91.3	100.3	103.0	100.5	105.2	100.0	110.6	103.4	102.3
May	105.5	109.4	115.1	94.7	91.3	100.3	103.0	102.4	104.3	100.0	114.9	103.4	102.3
June	105.2	106.5	115.3	94.7	91.3	100.3	103.0	105.7	104.3	100.0	114.9	103.4	102.3
July	107.0	110.1	117.2	94.7	97.3	100.3	103.0	100.4	104.3	100.0	114.9	103.4	102.3
August	107.4	111.1	117.5	94.7	97.3	100.3	103.0	101.2	104.3	100.0	114.9	103.4	102.3
September	106.6	107.5	117.3	94.2	97.3	100.3	103.0	102.6	104.3	100.0	114.9	103.4	102.3
October	106.4	106.1	117.6	92.1	97.3	100.3	103.0	104.5	104.3	100.0	114.9	103.4	102.3
November (P)	106.1	103.6	117.2	92.1	97.3	100.3	103.0	108.1	104.3	100.0	114.9	103.4	102.3
<u>Percentage Change (P)</u>													
Nov 2019 over Oct 2019	-0.3%	-2.3%	-0.3%	0.0%	0.0%	0.0%	0.0%	3.5%	0.0%	0.0%	0.0%	0.0%	0.0%
Nov 2019 over Nov 2018	4.6%	1.7%	3.4%	-1.5%	13.8%	0.0%	3.0%	7.8%	0.9%	0.0%	3.0%	2.7%	0.0%

Source : Samoa Bureau Statistics

(P) : Provisional figures

Note : n.a. Not applicable

Table 7. LOCAL ITEMS UNDERLYING INDEX

(Base Period : Average Prices February 2016 = 100)

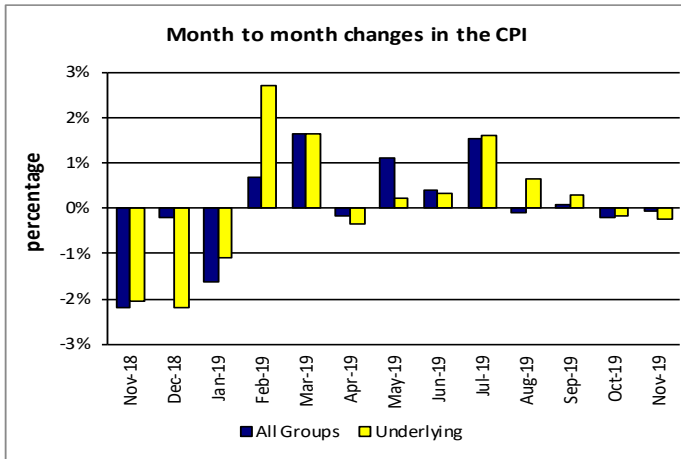
Group	All Items	Food and Non Alcoholic Beverages	Alcoholic Beverages, Tobacco and Narcotics	Clothing and Footwear	Housing, Water, Electricity, Gas and other Fuels	Furnishings, Household Equipment and Maintenance	Health	Transport	Communication	Recreation and Culture	Education	Restaurants	Miscellaneous goods and services
Weights	185.5	76.1	n.a	6.0	n.a	3.9	1.0	3.4	51.5	n.a	12.3	22.4	8.8
Ave - 2016	100.3	100.6		98.6		100.0	100.0	101.0				99.3	
Ave - 2017	99.9	100.1		95.7		100.1	100.0	101.8	101.2		96.7	98.3	102.3
Ave - 2018	101.9	100.3		93.3		100.3	100.0	108.3	103.3		114.0	99.0	102.3
2018													
November	102.4	100.7		93.5		100.3	100.0	108.6	103.4		115.6	100.6	102.3
December	102.2	100.7		93.0		100.3	100.0	108.6	102.9		115.6	100.6	102.3
2019													
January	102.2	100.7		91.8		100.3	100.0	108.6	102.9		115.6	100.6	102.3
February	102.4	101.1		94.8		100.3	100.0	108.6	102.9		113.9	100.6	102.3
March	103.3	101.3		94.2		100.3	106.3	108.6	105.2		113.9	102.8	102.3
April	103.3	101.0		94.6		100.3	106.3	108.6	105.2		113.9	103.4	102.3
May	103.8	101.7		94.7		100.3	106.3	108.6	104.3		120.6	103.4	102.3
June	103.6	101.2		94.7		100.3	106.3	108.6	104.3		120.6	103.4	102.3
July	103.9	102.0		94.7		100.3	106.3	108.6	104.3		120.6	103.4	102.3
August	103.9	101.9		94.7		100.3	106.3	108.6	104.3		120.6	103.4	102.3
September	104.0	102.1		94.2		100.3	106.3	108.6	104.3		120.6	103.4	102.3
October	103.8	102.0		92.1		100.3	106.3	108.6	104.3		120.6	103.4	102.3
November (P)	103.9	102.1		92.1		100.3	106.3	108.6	104.3		120.6	103.4	102.3
<u>Percentage Change (P)</u>													
Nov 2019 over Oct 2019	0.0%	0.1%		0.0%		0.0%	0.0%	0.0%	0.0%		0.0%	0.0%	0.0%
Nov 2019 over Nov 2018	1.5%	1.4%		-1.5%		0.0%	6.3%	0.0%	0.9%		4.4%	2.7%	0.0%

Source : Samoa Bureau Statistics

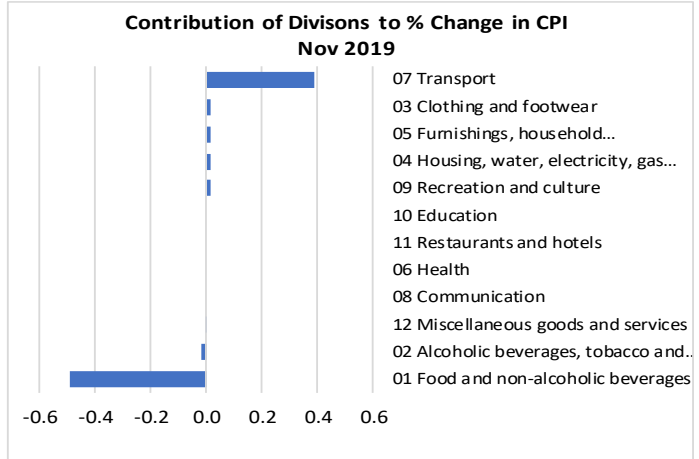
(P) : Provisional figures

Note : n.a. Not applicable

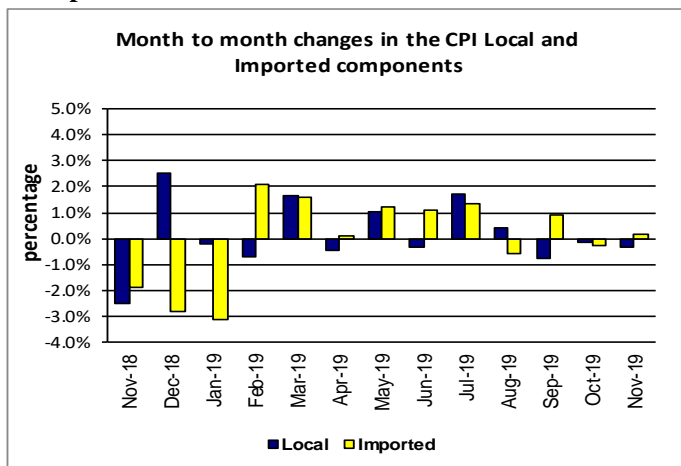
Graph.5



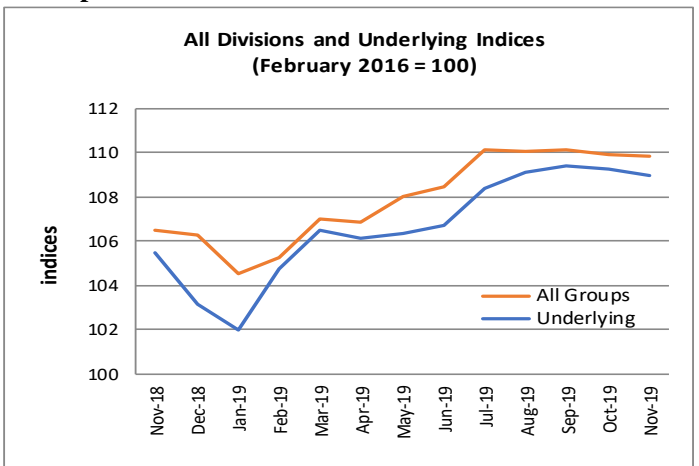
Graph.6



Graph.7



Graph.8



Graph.9

