

Please address all correspondence
To Government Statistician
In reply, please quote the file reference



GOVERNMENT OF SAMOA

File Ref: CPI 12/2019

SAMOA BUREAU OF STATISTICS

CONSUMER PRICE INDEX DECEMBER 2019

Key findings:

The Consumer Price Index for December 2019 decreased by 0.9 percent compared to the previous month.

- The Transport index decreased by 3.8 percent driven by reduced fuel price and airline fare.
- The Restaurants index increased by 4.7 percent.
- The Average Annual Inflation for the year ended December 2019 was 1.0 percent.

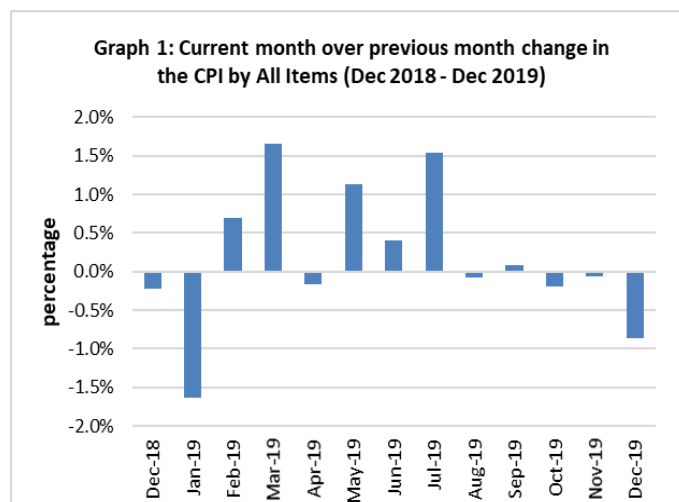
In the year to December 2019, the CPI rose 2.5 percent.

SUMMARY

The Consumer Price Index for December 2019 was 0.9 percent lower than in November 2019 and was 2.5 percent higher than in December 2018.

The decrease of the Imported Goods component by 1.1 percent from the previous month was due to lower prices for imported food and fuel, which was also the main contributor to the decrease of 0.9 percent in the All Items Consumer Price Index.

The Local Goods component also registered a decrease of 0.6 percent from the previous month. Graph 1 shows the month to month percentage changes in the Consumer Price Index by all Divisions from December 2018 to December 2019.

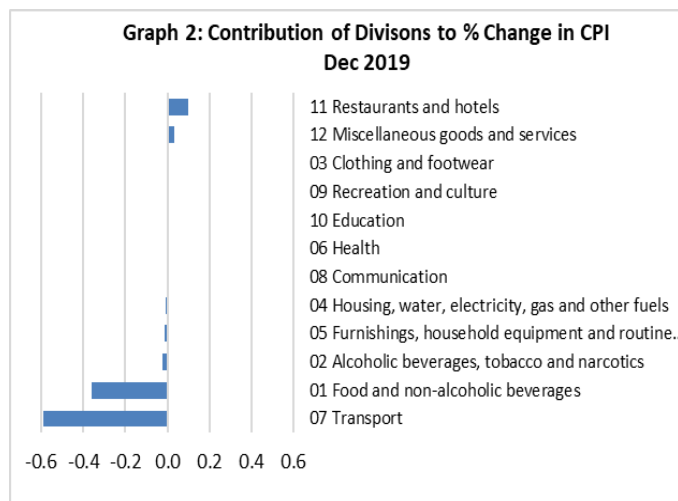


Source : Samoa Bureau of Statistics

Total All Divisions Contribution

As depicted in Graph 2, Transport along with Food and Non Alcoholic Beverages division were the main contributors to the overall decrease of 0.9 percent in the All Division Consumer Price Index.

On the other hand, there were offsetting positive contributions from Restaurants division with 0.1 percent increase.



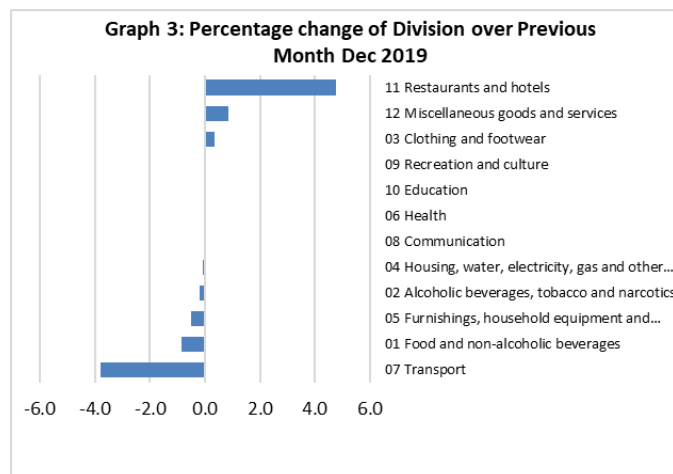
Source : Samoa Bureau of Statistics

Consumer Price Index (% Change)

The 0.9 percent decrease in the Overall Index was mainly due to a decrease of 3.8 percent in the Transport index. The Food and Non Alcoholic Beverages, Furnishing, Household Equipment and Maintenance, Alcoholic Beverages and Tobacco and Housing, Water, Electricity, Gas and other Fuels indices showed decreases of 0.9, 0.5, 0.2 and 0.1 percent respectively.

On the contrary, increases were recorded for other divisions namely Restaurants with 4.7 percent, Miscellaneous Goods and Services with 0.8 percent and Clothing and Footwear with 0.4 percent.

No changes were recorded for the Health, Communication, Recreation and Culture and Education indices. Graphically presented in Graph 3 is the December 2019 percentage change for all divisions from November 2019.



Source : Samoa Bureau of Statistics

Imported Goods Component

The Imported Goods Component of the Consumer Price Index registered a decrease of 1.1 percent when compared to the previous month. This decrease was mainly due to lower prices recorded for fuel (petrol and diesel), chicken leg quarter, raw sugar, rice and vegetable oil.

Local Goods Component

Decreased prices recorded for airline fare have resulted in the 0.6 percent decrease in the Local Good Component.

Transport Index

Lower prices recorded for fuel (petrol and diesel) and airline fare (Apia-Auckland-Apia) is reflected in the 3.8 percent decrease in the Transport Index.

Food and Non Alcoholic Beverages Index

A decrease of 0.9 percent in the Food and Non Alcoholic Beverages index was a reflection of the lower prices recorded for Chinese cabbage, fresh fish (string) and salted beef.

Furnishings, Household Equipment, and Maintenance Index

The 0.5 percent decrease in the Furnishing, Household, Equipment and Maintenance Index was mainly due to lower price recorded for washing soap and futon mattress.

Restaurants Index

Increased prices recorded for meal is reflected in the 4.7 percent increase in the Restaurants index.

Miscellaneous Goods and Services Index

The Miscellaneous Goods and Services index recorded an increase of 0.8 percent higher due to the increase in prices recorded for toilet paper and tooth paste.

Clothing Footwear Index

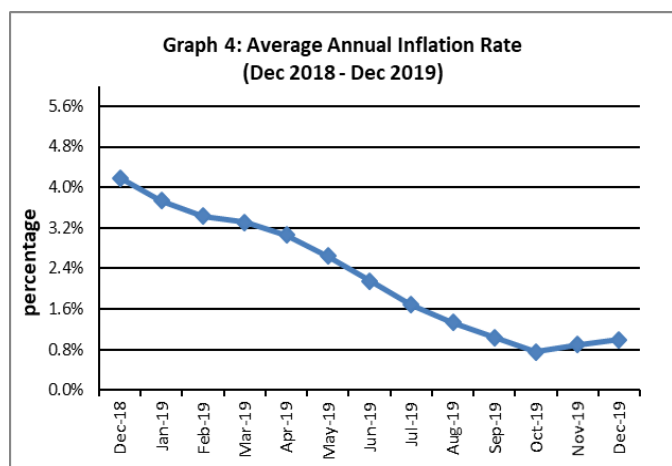
The 0.4 percent increase in the Clothing Footwear index was result in the higher prices recorded for puletasi.

Underlying Indices ^{1/}

The All Items Underlying Index for December 2019 registered a decrease of 0.5 percent when compared to November 2019, and an increase of 5.1 percent when compared to December 2018. The Imported Items Underlying Index registered a decrease of 1.1 percent, while the Local Items Underlying Index recorded an increase of 0.8 percent.

Inflation Rate

The average annual inflation rate for the year ended December 2019 was 1.0 percent. For the twelve months ending December 2018 the inflation rate was 4.2 percent. Presented in Graph 4 is the average annual inflation rate (December 2018 - December 2019).



Source : Samoa Bureau of Statistics

The attached Tables and Graphs provide the user with more detailed analysis.

Technical Notes:

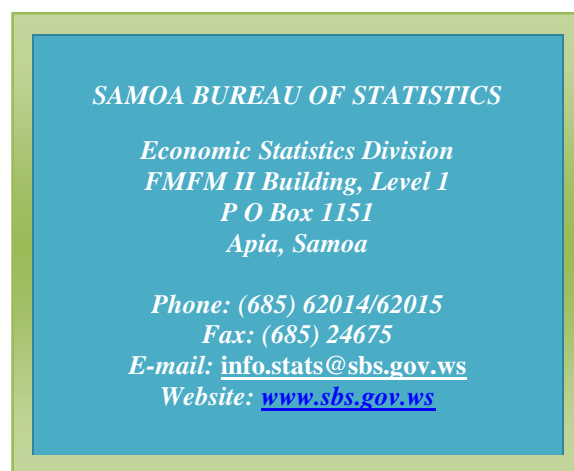
The Consumer Price (CPI) measures the rate of inflation for Samoa. It is designed to measure the change in prices for the goods purchased by households in

Samoa. The CPI measures the change in prices by comparing the prices for a basket of goods and services at the collection period with the price for the same goods in a base period.

The basket of goods that is priced is based on the average expenditures of households as recorded in the Household Income and Expenditure Survey (HIES). The HIES survey identifies how much households spend on different items. The more households spend on an item on average, the more important it is to the price index, and the higher the weight in the index.

^{1/} Monthly movements in the 'headline' CPI series can be volatile. This volatility reflects price changes in particular items that may be due, among other factors, to fluctuations in commodity markets and agricultural conditions, policy changes, or seasonal or infrequent price resetting.

Underlying inflation is a measure of inflation that excludes certain items that face volatile price movements. Underlying inflation eliminates products that can have temporary price shocks because these shocks can diverge from the overall trend of inflation and give a false measure of inflation.



Date of release: 23rd January 2020.

The next Consumer Price Index will be released on 11th February 2020.

Aliimuamua Malaefono Tauā - T.Faasalaina
GOVERNMENT STATISTICIAN/(CEO)

Table 1. CONSUMER PRICE INDEX.

(Base Period : Average Prices February 2016 = 100)

Group	All Items	Food and Non Alcoholic Beverages	Alcoholic Beverages, Tobacco and Narcotics	Clothing and Footwear	Housing, Water, Electricity, Gas and other Fuels	Furnishings, Household Equipment, and Maintenance	Health	Transport	Communication	Recreation and Culture	Education	Restaurants	Miscellaneous goods and services
<i>Weights</i>	1000.0	403.7	128.4	21.2	119.6	30.8	4.6	148.5	51.5	6.1	19.7	22.4	43.5
<i>Ave - 2017</i>	102.9	105.1	107.6	96.6	92.2	99.1	95.6	107.3	101.2	90.7	97.9	98.3	98.1
<i>Ave - 2018</i>	107.2	111.0	112.3	95.3	91.0	98.0	97.0	115.0	103.3	92.6	110.4	99.0	97.8
<i>Ave - 2019</i>	108.3	112.1	116.8	93.8	95.1	96.4	100.0	111.3	104.2	88.7	113.5	103.3	97.8
2018													
December 2019	106.3	107.0	113.6	96.3	89.6	96.8	99.9	119.3	102.9	90.9	111.6	100.6	98.2
January	104.6	106.0	115.4	93.7	89.4	97.6	99.9	109.3	102.9	91.0	111.6	100.6	98.1
February	105.3	108.3	116.3	95.2	89.0	96.2	99.9	107.5	102.9	91.0	110.5	100.6	98.5
March	107.0	111.3	116.8	94.7	93.3	95.5	100.1	106.4	105.2	89.8	110.6	102.8	98.3
April	106.8	110.3	116.3	95.0	93.4	95.2	100.1	108.2	105.2	90.1	110.6	103.4	98.0
May	108.0	111.6	115.9	95.3	93.6	93.6	100.1	113.1	104.3	88.2	114.9	103.4	98.0
June	108.5	111.2	116.0	95.9	93.6	95.8	100.1	116.8	104.3	87.1	114.9	103.4	97.2
July	110.1	114.7	117.7	92.2	98.3	97.4	100.1	113.3	104.3	87.1	114.9	103.4	97.4
August	110.1	116.0	117.7	92.2	97.9	97.0	100.1	109.4	104.3	87.1	114.9	103.4	97.9
September	110.1	115.3	117.5	92.1	98.1	97.3	100.1	112.3	104.3	87.1	114.9	103.4	97.5
October	109.9	114.6	117.7	92.3	98.1	96.8	100.1	112.6	104.3	87.1	114.9	103.4	97.5
November	109.9	113.2	117.5	93.0	98.2	97.3	100.1	115.5	104.3	89.5	114.9	103.4	97.4
December (P)	108.9	112.3	117.3	93.4	98.2	96.8	100.1	111.1	104.3	89.5	114.9	108.3	98.2
<u>Percentage Change (P)</u>													
Dec 2019 over Nov 2019	-0.9%	-0.9%	-0.2%	0.4%	-0.1%	-0.5%	0.0%	-3.8%	0.0%	0.0%	0.0%	4.7%	0.8%
Dec 2019 over Dec 2018	2.5%	4.9%	3.3%	-3.1%	9.5%	0.0%	0.2%	-6.8%	1.4%	-1.5%	3.0%	7.6%	0.0%

Source : Samoa Bureau Statistics

(P) : Provisional figures

Note : n.a. Not applicable

Table 2. ALL ITEMS UNDERLYING INDEX

(Base Period : Average Prices February 2016 = 100)

Group	All Items	Food and Non Alcoholic Beverages	Alcoholic Beverages, Tobacco and Narcotics	Clothing and Footwear	Housing, Water, Electricity, Gas and other Fuels	Furnishings, Household Equipment, and Maintenance	Health	Transport	Communication	Recreation and Culture	Education	Restaurants	Miscellaneous goods and services
<i>Weights</i>	586.7	345.3	<i>n.a</i>	21.2	24.2	30.8	3.5	26.4	51.5	5.6	12.3	22.4	43.5
Ave - 2017	104.1	107.9		96.6	93.8	99.1	94.2	104.2	101.2	90.0	96.7	98.3	98.1
Ave - 2018	106.6	110.8		95.3	93.4	98.0	96.0	110.8	103.3	92.0	114.0	99.0	97.8
Ave - 2019	107.2	111.6		93.8	94.6	96.4	100.1	108.1	104.2	87.9	118.5	103.3	97.8
2018													
December 2019	103.1	105.0		96.3	94.1	96.8	99.8	108.2	102.9	90.2	115.6	100.6	98.2
2019													
January	102.0	103.2		93.7	94.5	97.6	99.8	107.5	102.9	90.3	115.6	100.6	98.1
February	104.8	108.0		95.2	94.9	96.2	99.8	106.5	102.9	90.3	113.9	100.6	98.5
March	106.5	110.5		94.7	94.7	95.5	100.1	107.4	105.2	89.0	113.9	102.8	98.3
April	106.1	109.8		95.0	94.6	95.2	100.1	108.4	105.2	89.3	113.9	103.4	98.0
May	106.4	110.3		95.3	94.6	93.6	100.1	108.4	104.3	87.3	120.6	103.4	98.0
June	106.7	110.8		95.9	94.1	95.8	100.1	108.4	104.3	86.2	120.6	103.4	97.2
July	108.4	113.7		92.2	94.5	97.4	100.1	108.4	104.3	86.2	120.6	103.4	97.4
August	109.1	114.9		92.2	94.5	97.0	100.1	108.4	104.3	86.2	120.6	103.4	97.9
September	109.4	115.4		92.1	94.4	97.3	100.1	109.1	104.3	86.2	120.6	103.4	97.5
October	109.3	115.1		92.3	94.8	96.8	100.1	109.1	104.3	86.2	120.6	103.4	97.5
November	109.0	114.5		93.0	94.8	97.3	100.1	109.1	104.3	88.7	120.6	103.4	97.4
December (P)	108.4	113.3		93.4	94.9	96.8	100.1	106.9	104.3	88.7	120.6	108.3	98.2
<u>Percentage Change (P)</u>													
Dec 2019 over Nov 2019	-0.5%	-1.1%		0.4%	0.1%	-0.5%	0.0%	-2.0%	0.0%	0.0%	0.0%	4.7%	0.8%
Dec 2019 over Dec 2018	5.1%	7.9%		-3.1%	0.8%	0.0%	0.3%	-1.2%	1.4%	-1.6%	4.4%	7.6%	0.0%

Source : Samoa Bureau Statistics

(P) : Provisional figures

Note : n.a. Not applicable

Table 3. AVERAGE RETAIL PRICES OF SELECTED COMMODITIES

Commodities	Wt	Unit	2018			2019		
			Oct	Nov	Dec	Oct	Nov	Dec (P)
01 Food and non-alcoholic beverages								
Leg Quarters Chicken	62.2	kg	4.50	4.01	3.44	4.97	4.88	4.70
Raw Sugar	21.3	kg	2.68	2.63	2.69	2.45	2.42	2.38
Bread	17.2	loaf	1.68	1.68	1.68	1.69	1.67	1.70
Corned Beef (a)	15.9	12 oz	8.15	8.15	8.15	8.03	8.03	8.03
Taro	15.2	kg	2.66	2.66	3.03	2.47	2.56	2.60
Re-packed medium grain rice	13.4	kg	3.23	3.21	3.23	2.93	2.94	2.95
Prepacked medium grain rice (a)	13.4	907g	3.08	3.08	3.02	3.03	2.97	2.82
Canned fish betw een \$3.00 and \$3.99 Natural Oil	12.7	15 oz	3.45	3.45	3.50	3.37	3.37	3.39
Bongo	10.2	20grms	0.84	0.82	0.81	0.80	0.80	0.80
Keke Saina Biscuits (a)	9.2	pkt 10	6.50	6.50	6.25	6.18	6.27	6.38
Tip Top Ice Cream (a)	9.2	2 ltr	15.07	15.07	15.32	15.18	15.18	15.33
Ramen maggie	9.0	85gms	1.10	1.10	1.12	1.07	1.09	1.07
Fish (Piece)	7.9	kg	21.92	18.21	25.39	20.39	17.27	18.98
Butter Anchor	7.7	454g	13.46	13.46	13.54	15.77	15.77	15.77
Round Pancake (a)	7.5	sml	0.15	0.15	0.15	0.15	0.15	0.15
Mutton Flaps	6.6	kg	22.01	21.92	22.03	22.11	21.50	21.49
Canned fish \$4:00 or over N/Oil	6.4	15 oz	4.78	4.75	4.85	4.87	4.89	4.98
Canned fish under \$3.00 in N/Oil	6.4	15 oz	2.83	2.78	2.53	2.60	2.62	2.62
Wings Turkey	6.3	kg	6.36	6.15	6.08	7.21	8.20	8.43
Fish (string)	6.0	kg	11.75	9.81	10.94	10.96	10.81	10.61
Fish (large)	6.0	kg	16.28	16.28	18.60	19.57	15.61	16.54
02 Alcoholic beverages, tobacco and narcotics								
Lager Beer	37.9	355 mls	3.55	3.54	3.55	3.60	3.58	3.58
Pall Mall Filter Cigarettes (Red)	24.3	20 rolls	13.00	13.00	13.00	13.80	13.80	13.80
Pall Mall Menthol Cigarettes (Green)	24.3	20 rolls	13.00	13.00	13.00	13.80	13.80	13.80
Beer (a)	16.3	330 mls	3.35	3.35	3.35	3.36	3.38	3.36
Winfield Tobacco (a)	12.6	packet	15.00	15.00	15.00	15.00	15.00	15.00
03 Clothing and footwear								
Uniform le Faitaga College boys	4.3	size 8-10	31.33	31.33	31.33	29.67	29.67	29.67
Uniform Pa'ave (a)	3.7	size 7	34.33	34.67	34.67	31.00	32.00	32.00
04 Housing, water, electricity, gas and other fuels								
Electricity / Cashpower / kw h 1- 100 / total cost per t	50.6	kw h	0.70	0.58	0.58	0.67	0.67	0.67
Reservoir treated Water	28.5	15-40 m3	1.40	1.40	1.40	1.67	1.67	1.67
Liquid gas	15.8	9kg	62.00	62.00	62.00	62.00	62.00	62.00
Government house Rent	12.2	2 b/room	650.00	650.00	650.00	650.00	650.00	650.00
05 Furnishings, household equipment and routine household maintenance								
Washing powder (a)	6.3	200g	1.79	1.79	1.72	1.84	1.86	1.86
Soap yellow Washing soap	5.9	bar	2.85	2.85	2.85	2.76	2.85	2.81
Mosquito coil	4.4	10 coil	1.28	1.28	1.28	1.20	1.20	1.20

06 Health

Amoxicillin mg Tablets (a)	2.5	500 mg	7.53	7.53	7.92	7.58	7.58	7.58
Hospital Charge	1.1	night	22.50	22.50	22.50	22.50	22.50	22.50

07 Transport

Petrol	60.8	1 ltr	2.88	2.97	2.89	2.62	2.69	2.66
Taxi Fare PO Motootua Hosp	8.2	per trip	4.80	4.80	4.80	4.80	4.80	4.80
Taxi Fares PO Malua	8.2	per trip	31.30	31.30	31.30	31.30	31.30	31.30
Taxi Fares PO Falefa	8.2	per trip	43.20	43.20	43.20	43.20	43.20	43.20
Air Fares Fagalii Pago Fagalii	6.8	return trip	395.00	395.00	395.00	395.00	395.00	395.00
Air Fares Apia Auckland Apia	6.8	1 month	1640.47	1271.10	2035.67	1651.54	2093.29	1157.50

08 Communication

Calling per minute Rate cell phone (a)	10.02	per minute	0.45	0.45	0.45	0.43	0.43	0.43
Internet data bundles per mb Rate (a)	10.02	per mb	0.25	0.25	0.25	0.25	0.25	0.25
Calling per minute Rate cell phone (a)	10.02	per minute	0.44	0.44	0.44	0.44	0.44	0.44
Internet data bundles per mb Rate (a)	10.02	per mb	0.20	0.20	0.20	0.20	0.20	0.20

09 Recreation and culture

Television (a)	2.30	LCD	1010.67	1010.67	966.00	827.67	861.00	861.00
Exercise Book warwick	1.44	1B4 64 pa	1.45	1.37	1.35	1.37	1.47	1.47
Laptop (a)	1.33	each	2878.60	2842.00	2878.60	2918.60	2918.60	2918.60

10 Education

Fees PTA Primary Y Urban Registration fees (a)	7.23	Year 6	82.50	82.50	82.50	82.50	82.50	82.50
Fees PTA Secondary Y Urban Registration fees (a)	5.11	Year 10	52.00	52.00	52.00	58.00	58.00	58.00
Fees Tertiary NUS registration School Fees	3.79	registratio	320.00	320.00	320.00	322.00	322.00	322.00
Fees Secondary Y Examination Fees (a)	3.61	Y12-13	25.50	25.50	25.50	25.50	25.50	25.50

11 Restaurants and hotels

Fish & Chip Meal	7.79	1 serve	9.17	9.17	9.17	9.17	9.17	9.17
Curry & Chopsuey Meal	4.87	1 serve	3.00	3.33	3.33	3.67	3.67	4.67
Chicken & Chips Meal (a)	4.87	1 serve	9.36	9.36	9.36	9.64	9.64	9.64
Steam rice & chicken Meal (a)	4.87	1 serve	4.83	4.83	4.83	4.83	4.83	4.83

12 Miscellaneous goods and services

Paper Sofan deluxe ply Toilet Paper	8.52	250 sheet:	1.01	1.01	1.01	0.99	0.96	1.01
Hair Gel	4.59	1124ml	4.34	4.36	4.36	4.40	4.60	4.60
Price for Storage of remains (a)	4.41	per day	60.00	60.00	60.00	60.00	60.00	60.00
Basic Casket (a)	4.41	each	1966.67	1966.67	1966.67	1966.67	1966.67	1966.67
Standard Embalming (a)	4.41	1 person	1500.00	1500.00	1500.00	1500.00	1500.00	1500.00
Toilet soap (a)	4.38	90g	1.85	1.85	1.86	1.96	1.96	1.95
Diapers (a)	4.19	5kg-10kg	9.36	9.36	9.21	8.99	8.99	8.99

Source : Samoa Bureau Statistics

(a) : New commodity from February 2016

(P) : Provisional figures

Note : Please note unit of conversion was in pound's (lb's) but been converted into kilograms (kg)

Table 4. IMPORTED GOODS COMPONENT OF THE CONSUMER PRICE INDEX
(Base Period : Average Prices February 2016 = 100)

Group	All Items	Food and Non Alcoholic Beverages	Alcoholic Beverages, Tobacco and Narcotics	Clothing and Footwear	Housing, Water , Electricity, Gas and other Fuels	Furnishings, Household Equipment and Maintenance	Health	Transport	Communication	Recreation and Culture	Education	Restaurants	Miscellaneous goods and services
<i>Weights</i>	494.7	269.1	23.8	15.2	28.3	26.9	2.5	88.6	<i>n.a</i>	5.6	<i>n.a</i>	<i>n.a</i>	34.7
<i>Ave - 2016</i>	102.5	103.9	105.1	98.8	98.7	99.3	98.5	101.8		95.0			100.7
<i>Ave - 2017</i>	107.3	110.1	110.0	97.0	97.6	98.9	91.7	111.2		90.0			97.1
<i>Ave - 2018</i>	111.9	113.8	113.5	96.1	100.6	97.6	94.3	124.0		92.0			96.6
<i>Ave - 2019</i>	111.1	114.5	118.3	93.7	100.8	95.8	97.9	117.3		87.9			96.7
2018													
December	108.6	106.2	115.0	97.6	102.9	96.3	99.8	127.3		90.2			97.2
2019													
January	105.2	103.9	115.0	94.5	101.8	97.2	99.8	116.3		90.3			97.0
February	107.4	110.0	116.6	95.4	100.0	95.6	99.8	110.4		90.3			97.5
March	109.2	113.2	119.5	94.8	99.8	94.8	97.5	110.3		89.0			97.2
April	109.3	112.4	119.6	95.1	100.5	94.5	97.5	113.4		89.3			96.9
May	110.6	112.7	119.3	95.5	101.2	92.6	97.5	120.3		87.3			96.9
June	111.9	113.5	119.3	96.3	101.2	95.2	97.5	124.2		86.2			95.9
July	113.4	117.0	119.7	91.2	101.5	96.9	97.5	122.0		86.2			96.2
August	112.8	118.5	118.2	91.2	100.0	96.5	97.5	114.9		86.2			96.8
September	113.8	119.1	118.1	91.3	100.7	96.8	97.5	118.8		86.2			96.2
October	113.5	118.8	117.9	92.4	100.8	96.3	97.5	118.1		86.2			96.2
November	113.7	118.1	118.7	93.4	101.3	96.9	97.5	120.5		88.7			96.1
December (P)	112.4	116.3	117.8	93.4	101.0	96.3	97.5	118.8		88.7			97.2
<u>Percentage Change (P)</u>													
Dec 2019													
over	-1.1%	-1.5%	-0.8%	0.0%	-0.3%	-0.6%	0.0%	-1.4%		0.0%			1.1%
Nov 2019													
Dec 2019													
over	3.5%	9.5%	2.5%	-4.3%	-1.8%	0.0%	-2.3%	-6.6%		-1.6%			0.0%
Dec 2018													

Source : Samoa Bureau Statistics

(P) : Provisional figures

Note : n.a. Not applicable

Table 5. IMPORTED ITEMS UNDERLYING INDEX

(Base Period : Average Prices February 2016 = 100)

Group	All Items	Food and Non Alcoholic Beverages	Alcoholic Beverages, Tobacco and Narcotics	Clothing and Footwear	Housing, Water , Electricity, Gas and other Fuels	Furnishings, Household Equipment and Maintenance	Health	Transport	Communication	Recreation and Culture	Education	Restaurants	Miscellaneous goods and services
Weights	401.2	269.1	n.a	15.2	24.2	26.9	2.5	23.0	n.a	5.6	n.a	n.a	34.7
Ave - 2017	106.0	110.1		97.0	93.8	98.9	91.7	104.5		90.0			97.1
Ave - 2018	108.8	113.8		96.1	93.4	97.6	94.3	111.2		92.0			96.6
Ave - 2019	108.9	114.5		93.7	94.6	95.8	97.9	108.1		87.9			96.7
2018													
December	103.6	106.2		97.6	94.1	96.3	99.8	108.1		90.2			97.2
2019													
January	101.9	103.9		94.5	94.5	97.2	99.8	107.3		90.3			97.0
February	105.9	110.0		95.4	94.9	95.6	99.8	106.2		90.3			97.5
March	108.0	113.2		94.8	94.7	94.8	97.5	107.3		89.0			97.2
April	107.5	112.4		95.1	94.6	94.5	97.5	108.3		89.3			96.9
May	107.6	112.7		95.5	94.6	92.6	97.5	108.3		87.3			96.9
June	108.2	113.5		96.3	94.1	95.2	97.5	108.3		86.2			95.9
July	110.5	117.0		91.2	94.5	96.9	97.5	108.3		86.2			96.2
August	111.5	118.5		91.2	94.5	96.5	97.5	108.3		86.2			96.8
September	111.9	119.1		91.3	94.4	96.8	97.5	109.2		86.2			96.2
October	111.8	118.8		92.4	94.8	96.3	97.5	109.2		86.2			96.2
November	111.4	118.1		93.4	94.8	96.9	97.5	109.2		88.7			96.1
December (P)	110.1	116.3		93.4	94.9	96.3	97.5	106.7		88.7			97.2
<u>Percentage Change (P)</u>													
Dec 2019 over Nov 2019	-1.1%	-1.5%		0.0%	0.1%	-0.6%	0.0%	-2.3%		0.0%			1.1%
Dec 2019 over Dec 2018	6.3%	9.5%		-4.3%	0.8%	0.0%	-2.3%	-1.3%		-1.6%			0.0%

Source : Samoa Bureau Statistics

(P) : Provisional figures

Note : n.a. Not applicable

Table 6. LOCAL GOODS COMPONENT OF THE CONSUMER PRICE INDEX
(Base Period : Average Prices February 2016 = 100)

Group	All Items	Food and Non Alcoholic Beverages	Alcoholic Beverages, Tobacco and Narcotics	Clothing and Footwear	Housing, Water, Electricity, Gas and other Fuels	Furnishings, Household Equipment and Maintenance	Health	Transport	Communication	Recreation and Culture	Education	Restaurants	Miscellaneous goods and services
Weights	505.3	134.6	104.6	6.0	91.3	3.9	2.2	59.9	51.5	0.4	19.7	22.4	8.8
Ave - 2017	98.6	95.0	107.1	95.7	90.6	100.1	100.0	101.6	101.2	100.0	97.9	98.3	102.3
Ave - 2018	102.6	105.3	112.0	93.3	88.1	100.3	100.0	101.7	103.3	100.0	110.4	99.0	102.3
Ave - 2019	105.5	107.3	116.5	93.8	93.3	100.3	102.5	102.3	104.2	100.0	113.5	103.3	102.3
2018													
December 2019	104.0	108.7	113.2	93.0	85.5	100.3	100.0	107.5	102.9	100.0	111.6	100.6	102.3
2019													
January	103.9	110.1	115.5	91.8	85.5	100.3	100.0	98.8	102.9	100.0	111.6	100.6	102.3
February	103.2	105.1	116.2	94.8	85.5	100.3	100.0	103.2	102.9	100.0	110.5	100.6	102.3
March	104.9	107.5	116.2	94.2	91.3	100.3	103.0	100.7	105.2	100.0	110.6	102.8	102.3
April	104.4	106.2	115.6	94.6	91.3	100.3	103.0	100.5	105.2	100.0	110.6	103.4	102.3
May	105.5	109.4	115.1	94.7	91.3	100.3	103.0	102.4	104.3	100.0	114.9	103.4	102.3
June	105.2	106.5	115.3	94.7	91.3	100.3	103.0	105.7	104.3	100.0	114.9	103.4	102.3
July	107.0	110.1	117.2	94.7	97.3	100.3	103.0	100.4	104.3	100.0	114.9	103.4	102.3
August	107.4	111.1	117.5	94.7	97.3	100.3	103.0	101.2	104.3	100.0	114.9	103.4	102.3
September	106.6	107.5	117.3	94.2	97.3	100.3	103.0	102.6	104.3	100.0	114.9	103.4	102.3
October	106.4	106.1	117.6	92.1	97.3	100.3	103.0	104.5	104.3	100.0	114.9	103.4	102.3
November	106.1	103.6	117.2	92.1	97.3	100.3	103.0	108.1	104.3	100.0	114.9	103.4	102.3
December (P)	105.5	104.1	117.2	93.3	97.3	100.3	103.0	99.7	104.3	100.0	114.9	108.3	102.3
<u>Percentage Change (P)</u>													
Dec 2019 over Nov 2019	-0.6%	0.5%	0.0%	1.3%	0.0%	0.0%	0.0%	-7.8%	0.0%	0.0%	0.0%	4.7%	0.0%
Dec 2019 over Dec 2018	1.4%	-4.2%	3.5%	0.4%	13.8%	0.0%	3.0%	-7.2%	1.4%	0.0%	3.0%	7.6%	0.0%

Source : Samoa Bureau Statistics

(P) : Provisional figures

Note : n.a. Not applicable

Table 7. LOCAL ITEMS UNDERLYING INDEX

(Base Period : Average Prices February 2016 = 100)

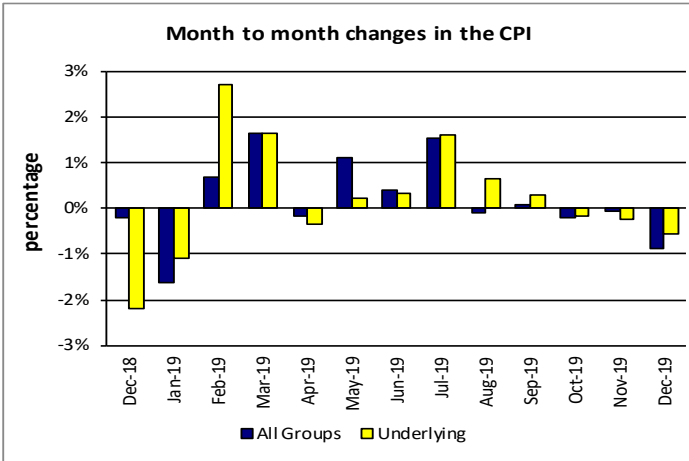
Group	All Items	Food and Non Alcoholic Beverages	Alcoholic Beverages, Tobacco and Narcotics	Clothing and Footwear	Housing, Water, Electricity, Gas and other Fuels	Furnishings, Household Equipment and Maintenance	Health	Transport	Communication	Recreation and Culture	Education	Restaurants	Miscellaneous goods and services
Weights	185.5	76.1	n.a	6.0	n.a	3.9	1.0	3.4	51.5	n.a	12.3	22.4	8.8
Ave - 2016	100.3	100.6		98.6		100.0	100.0	101.0				99.3	
Ave - 2017	99.9	100.1		95.7		100.1	100.0	101.8	101.2		96.7	98.3	102.3
Ave - 2018	101.9	100.3		93.3		100.3	100.0	108.3	103.3		114.0	99.0	102.3
Ave - 2019	103.6	101.6		93.8		100.3	105.2	108.6	104.2		118.5	103.3	102.3
2018													
December	102.2	100.7		93.0		100.3	100.0	108.6	102.9		115.6	100.6	102.3
2019													
January	102.2	100.7		91.8		100.3	100.0	108.6	102.9		115.6	100.6	102.3
February	102.4	101.1		94.8		100.3	100.0	108.6	102.9		113.9	100.6	102.3
March	103.3	101.3		94.2		100.3	106.3	108.6	105.2		113.9	102.8	102.3
April	103.3	101.0		94.6		100.3	106.3	108.6	105.2		113.9	103.4	102.3
May	103.8	101.7		94.7		100.3	106.3	108.6	104.3		120.6	103.4	102.3
June	103.6	101.2		94.7		100.3	106.3	108.6	104.3		120.6	103.4	102.3
July	103.9	102.0		94.7		100.3	106.3	108.6	104.3		120.6	103.4	102.3
August	103.9	101.9		94.7		100.3	106.3	108.6	104.3		120.6	103.4	102.3
September	104.0	102.1		94.2		100.3	106.3	108.6	104.3		120.6	103.4	102.3
October	103.8	102.0		92.1		100.3	106.3	108.6	104.3		120.6	103.4	102.3
November	103.9	102.1		92.1		100.3	106.3	108.6	104.3		120.6	103.4	102.3
December (P)	104.7	102.5		93.3		100.3	106.3	108.6	104.3		120.6	108.3	102.3
<u>Percentage Change (P)</u>													
Dec 2019													
over	0.8%	0.4%		1.3%		0.0%	0.0%	0.0%	0.0%		0.0%	4.7%	0.0%
Nov 2019													
Dec 2019													
over	2.4%	1.9%		0.4%		0.0%	6.3%	0.0%	1.4%		4.4%	7.6%	0.0%
Dec 2018													

Source : Samoa Bureau Statistics

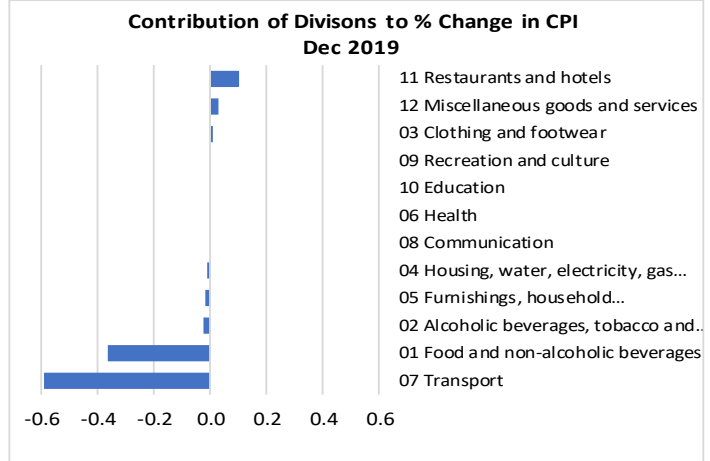
(P) : Provisional figures

Note : n.a. Not applicable

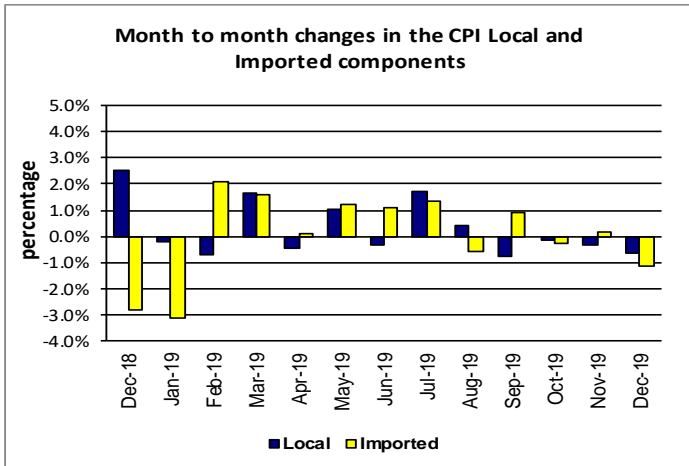
Graph.5



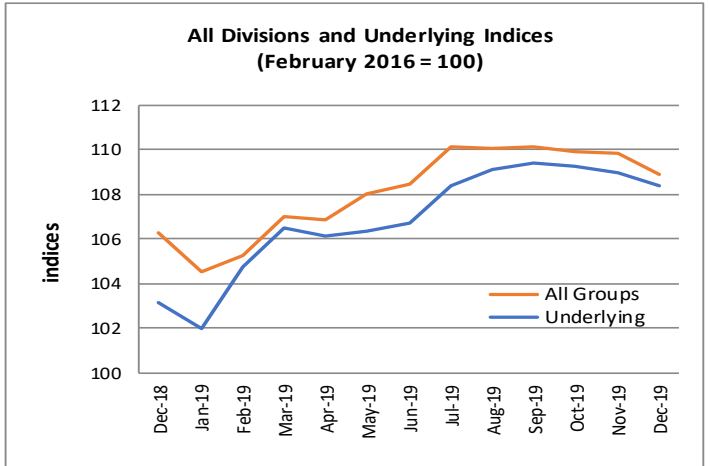
Graph.6



Graph.7



Graph.8



Graph.9

