

Please address all correspondence
To Government Statistician
In reply, please quote the file reference



GOVERNMENT OF SAMOA

File Ref: CPI 5/2019

SAMOA BUREAU OF STATISTICS

CONSUMER PRICE INDEX May 2019

Key findings:

The Consumer Price Index for May 2019 increased by 1.1 percent compared to the previous month.

- The continued increase of oil prices internationally in May 2019 has pushed local fuel prices up as reflected in the 4.5 percent increase in the Transport index.
- Education index also increased by 3.8 percent.
- Recreation and Culture index decreased by 2.1 percent.
- The Average Annual Inflation for the year ended May 2019 was 2.6 percent.

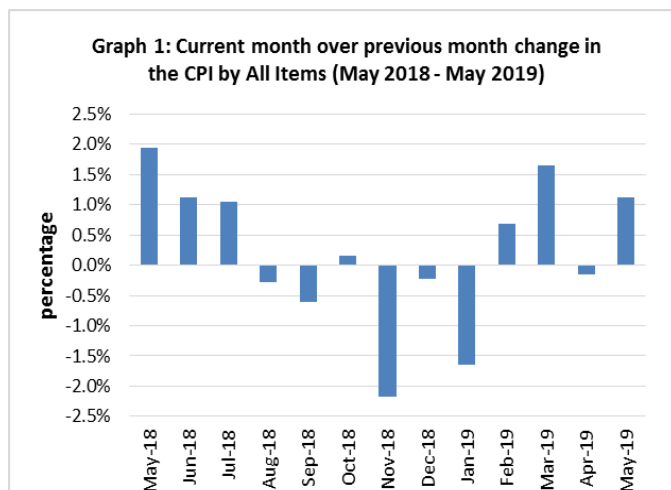
In the year to May 2019, the CPI rose 0.6 percent.

SUMMARY

The Consumer Price Index for May 2019 was 1.1 percent higher than in April 2019, and was 0.6 percent higher than May 2018.

The increase of the Imported Goods component by 1.2 percent from the previous month was due to higher prices for fuel and imported food which were also the main contributors to the increase of 1.1 percent in the All Items Consumer Price Index.

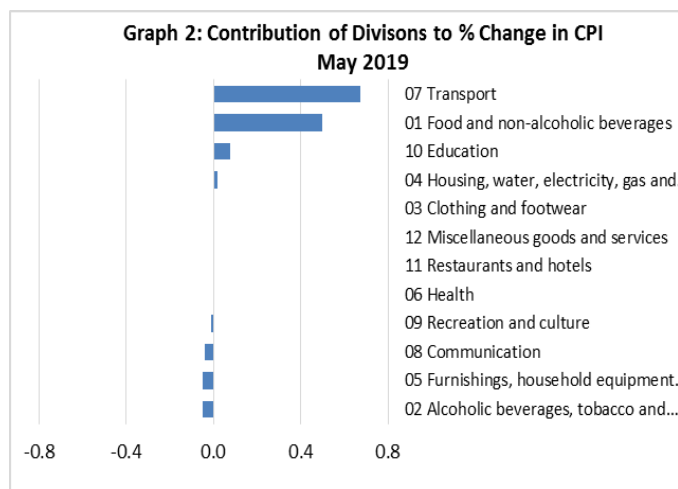
The Local Goods Component registered an increase of 1.0 percent from the previous month. Graph 1 shows the month to month percentage changes in the Consumer Price Index by all Divisions from May 2018 to May 2019.



Source : Samoa Bureau of Statistics

Total All Divisions Contribution

As depicted in Graph 2, Transport and Food and Non Alcoholic Beverages divisions were the main contributors to the overall increase of 1.1 percent in the All Division Consumer Price Index.



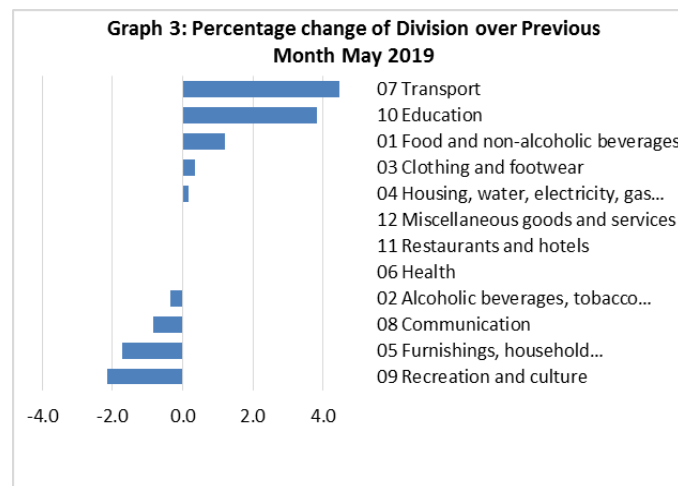
Source : Samoa Bureau of Statistics

Consumer Price Index (% Change)

The increases recorded for the Transport index from the previous month registered 4.5 percent, Education index with 3.8 percent, Food and Non Alcoholic Beverages index with 1.2 percent, Clothing and Footwear index with 0.3 percent and Housing, Water, Electricity, Gas and other Fuels index with 0.2 percent.

On the contrary, Recreation and Culture index recorded a decrease of 2.1 percent. Furnishing, Household Equipment and Maintenance also registered a decrease of 1.7 percent, while Communication and Alcoholic Beverages and Tobacco indices both registered slight decreases of 0.8 and 0.4 percent respectively.

No changes were recorded for the Health, Restaurants and Miscellaneous Goods and Services indices. Graphically presented in Graph 3 is the May 2019 percentage change for all divisions from April 2019.



Source : Samoa Bureau of Statistics

Imported Goods Component

The Imported Goods Component of the Consumer Price Index registered an increase of 1.2 percent when compared to the previous month. This increase was mainly due to higher prices recorded for fuel (petrol, diesel and kerosene), chicken leg quarter and mutton flap.

Local Goods Component

Increased prices recorded for local food and Parents Teachers Association (PTA) fees have resulted in the 1.0 percent increase in the Local Good Component.

Transport Index

Higher prices recorded for fuel (petrol and diesel) and airline fare (Apia-Auckland-Apia) is reflected in the 4.5 percent increase in the Transport Index.

Education

The 3.8 percent increase in the Education index was a result of the higher prices recorded for Parents Teachers Association (PTA) fees.

Food and Non Alcoholic Beverages Index

An increase of 1.2 percent in the Food and Non Alcoholic Beverages index was a reflection of the higher prices recorded for chicken leg quarter, mutton flap, taro, fresh fish (large), banana, taamu and head cabbage.

Recreation and Culture Index

The 2.1 percent decrease in the Recreation and Culture index was result in the lower prices recorded for LCD television.

Furnishings, Household Equipment, and Maintenance Index

The Furnishing, Household, Equipment and Maintenance Index recorded a decrease of 1.7 percent due to decreased prices recorded for washing powder and batteries (AA).

Communication Index

The 0.8 percent decrease in the Communication index was a result of the lower prices recorded for prepaid internet.

Alcoholic Beverages and Tobacco Index

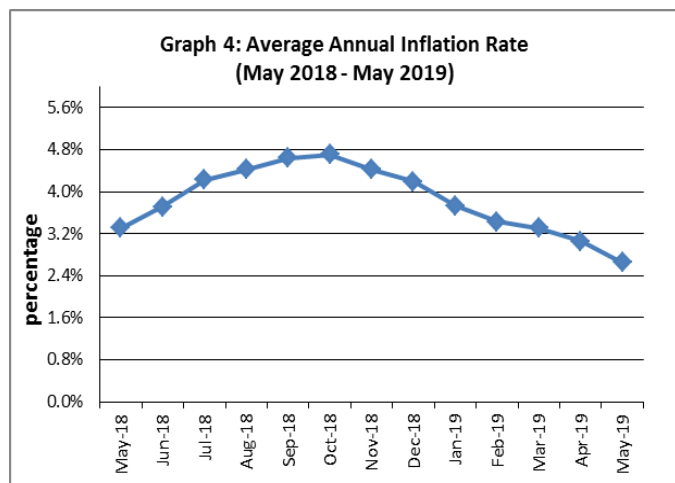
Decreased prices recorded for beer and kava have resulted in the 0.4 percent decrease in the Alcoholic Beverages and Tobacco index.

Underlying Indices ^{1/}

The All Items Underlying Index for May 2019 registered an increase of 0.2 percent when compared to April 2019, and a decrease of 0.5 percent when compared to May 2018. The Local Items Underlying Index registered an increase of 0.5 percent, while Local Items Underlying Index also recorded an increase of 0.1 percent.

Inflation Rate

The average annual inflation rate for the year ended May 2019 slowed to 2.6 percent. For the twelve months ending May 2018 the inflation rate was 3.3 percent. Presented in Graph 4 is the average annual inflation rate (May 2018 - May 2019).



Source : Samoa Bureau of Statistics

The attached Tables and Graphs provide the user with more detailed analysis

Technical Notes:

The Consumer Price (CPI) measures the rate of inflation for Samoa. It is designed to measure the change in prices for the goods purchased by households in Samoa. The CPI measures the change in prices by comparing the prices for a basket of goods and services at the collection period with the price for the same goods in a base period.

The basket of goods that is priced is based on the average expenditures of households as recorded in the Household Income and Expenditure Survey (HIES). The HIES survey identifies how much households spend on different items. The more households spend on an item on average, the more important it is to the price index, and the higher the weight in the index.

^{1/} Monthly movements in the 'headline' CPI series can be volatile. This volatility reflects price changes in particular items that may be due, among other factors, to fluctuations in commodity markets and agricultural conditions, policy changes, or seasonal or infrequent price resetting.

Underlying inflation is a measure of inflation that excludes certain items that face volatile price movements. Underlying inflation eliminates products that can have temporary price shocks because these shocks can diverge from the overall trend of inflation and give a false measure of inflation.

SAMOA BUREAU OF STATISTICS

*Economic Statistics Division
FMFM II Building, Level 1
P O Box 1151
Apia, Samoa*

*Phone: (685) 62014/62015
Fax: (685) 24675
E-mail: info.stats@sbs.gov.ws
Website: www.sbs.gov.ws*

Date of release: 12th June 2019.

The next Consumer Price Index will be released on 9th July 2019.

Aliimuamua Malaefono Tauā - T.Faasalaina
GOVERNMENT STATISTICIAN/(CEO)

Table 1. CONSUMER PRICE INDEX.

(Base Period : Average Prices February 2016 = 100)

Group	All Items	Food and Non Alcoholic Beverages	Alcoholic Beverages, Tobacco and Narcotics	Clothing and Footwear	Housing, Water, Electricity, Gas and other Fuels	Furnishings, Household Equipment, and Maintenance	Health	Transport	Communication	Recreation and Culture	Education	Restaurants	Miscellaneous goods and services
<i>Weights</i>	1000.0	403.7	128.4	21.2	119.6	30.8	4.6	148.5	51.5	6.1	19.7	22.4	43.5
<i>Ave - 2016</i>	101.1	103.7	102.8	98.8	92.6	99.4	99.2	101.3	100.0	95.4	101.1	99.3	100.6
<i>Ave - 2017</i>	102.9	105.1	107.6	96.6	92.2	99.1	95.6	107.3	101.2	90.7	97.9	98.3	98.1
<i>Ave - 2018</i>	107.2	111.0	112.3	95.3	91.0	98.0	97.0	115.0	103.3	92.6	110.4	99.0	97.8
2018													
May	107.4	112.1	112.5	95.0	89.8	98.4	95.3	113.6	103.4	93.2	111.6	98.6	97.9
June	108.6	115.3	112.1	95.0	88.1	97.3	95.3	115.2	103.4	93.2	111.6	98.6	97.6
July	109.7	116.7	112.0	95.0	89.7	97.6	98.5	117.4	103.4	93.2	111.6	98.6	98.3
August	109.4	115.6	113.2	95.0	92.9	97.2	98.5	114.9	103.4	92.0	111.6	98.6	98.1
September	108.7	113.1	113.6	94.8	93.5	98.2	98.5	116.1	103.4	92.0	111.6	98.6	97.9
October	108.9	112.4	113.8	96.0	95.2	97.9	98.5	117.4	103.4	93.8	111.6	98.6	98.0
November	106.5	108.1	113.6	96.2	89.7	97.6	98.5	117.8	103.4	92.3	111.6	100.6	98.0
December	106.3	107.0	113.6	96.3	89.6	96.8	99.9	119.3	102.9	90.9	111.6	100.6	98.2
2019													
January	104.6	106.0	115.4	93.7	89.4	97.6	99.9	109.3	102.9	91.0	111.6	100.6	98.1
February	105.3	108.3	116.3	95.2	89.0	96.2	99.9	107.5	102.9	91.0	110.5	100.6	98.5
March	107.0	111.3	116.8	94.7	93.3	95.5	100.1	106.4	105.2	89.8	110.6	102.8	98.3
April	106.8	110.3	116.3	95.0	93.4	95.2	100.1	108.2	105.2	90.1	110.6	103.4	98.0
May (P)	108.0	111.6	115.9	95.3	93.6	93.6	100.1	113.1	104.3	88.2	114.9	103.4	98.0
<u>Percentage Change (P)</u>													
May 2019 over Apr 2019	1.1%	1.2%	-0.4%	0.3%	0.2%	-1.7%	0.0%	4.5%	-0.8%	-2.1%	3.8%	0.0%	0.0%
May 2019 over May 2018	0.6%	-0.4%	3.0%	0.3%	4.3%	-4.9%	5.0%	-0.5%	0.9%	-5.4%	3.0%	4.8%	0.1%

Source : Samoa Bureau Statistics

(P) : Provisional figures

Note : n.a. Not applicable

Table 2. ALL ITEMS UNDERLYING INDEX

(Base Period : Average Prices February 2016 = 100)

Group	All Items	Food and Non Alcoholic Beverages	Alcoholic Beverages, Tobacco and Narcotics	Clothing and Footwear	Housing, Water, Electricity, Gas and other Fuels	Furnishings, Household Equipment, and Maintenance	Health	Transport	Communication	Recreation and Culture	Education	Restaurants	Miscellaneous goods and services
<i>Weights</i>	586.7	345.3	<i>n.a</i>	21.2	24.2	30.8	3.5	26.4	51.5	5.6	12.3	22.4	43.5
<i>Ave - 2016</i>	101.7	103.2		98.8	97.5	99.4	99.0	100.2		95.0		99.3	100.6
<i>Ave - 2017</i>	104.1	107.9		96.6	93.8	99.1	94.2	104.2	101.2	90.0	96.7	98.3	98.1
<i>Ave - 2018</i>	106.6	110.8		95.3	93.4	98.0	96.0	110.8	103.3	92.0	114.0	99.0	97.8
2018													
May	106.9	111.1		95.0	93.1	98.4	93.8	112.5	103.4	92.7	115.6	98.6	97.9
June	109.7	116.0		95.0	93.3	97.3	93.8	112.3	103.4	92.7	115.6	98.6	97.6
July	109.2	115.2		95.0	93.2	97.6	98.0	111.3	103.4	92.7	115.6	98.6	98.3
August	108.8	114.7		95.0	92.6	97.2	98.0	111.3	103.4	91.3	115.6	98.6	98.1
September	107.9	113.0		94.8	92.9	98.2	98.0	109.9	103.4	91.4	115.6	98.6	97.9
October	107.7	112.7		96.0	94.0	97.9	98.0	107.7	103.4	93.3	115.6	98.6	98.0
November	105.5	108.8		96.2	94.5	97.6	98.0	107.8	103.4	91.7	115.6	100.6	98.0
December	103.1	105.0		96.3	94.1	96.8	99.8	108.2	102.9	90.2	115.6	100.6	98.2
2019													
January	102.0	103.2		93.7	94.5	97.6	99.8	107.5	102.9	90.3	115.6	100.6	98.1
February	104.8	108.0		95.2	94.9	96.2	99.8	106.5	102.9	90.3	113.9	100.6	98.5
March	106.5	110.5		94.7	94.7	95.5	100.1	107.4	105.2	89.0	113.9	102.8	98.3
April	106.1	109.8		95.0	94.6	95.2	100.1	108.4	105.2	89.3	113.9	103.4	98.0
May (P)	106.4	110.3		95.3	94.6	93.6	100.1	108.4	104.3	87.3	120.6	103.4	98.0
<u>Percentage Change (P)</u>													
May 2019 over Apr 2019	0.2%	0.4%		0.3%	0.0%	-1.7%	0.0%	0.0%	-0.8%	-2.3%	5.9%	0.0%	0.0%
May 2019 over May 2018	-0.5%	-0.7%		0.3%	1.6%	-4.9%	6.8%	-3.7%	0.9%	-5.9%	4.4%	4.8%	0.1%

Source : Samoa Bureau Statistics

(P) : Provisional figures

Note : n.a. Not applicable

Table 3. AVERAGE RETAIL PRICES OF SELECTED COMMODITIES

Commodities	Wt	Unit	2018			2019		
			Mar	Apr	May	Mar	Apr	May (P)
01 Food and non-alcoholic beverages								
Leg Quarters Chicken	62.2	kg	3.73	3.73	4.30	4.19	4.07	4.22
Raw Sugar	21.3	kg	3.00	2.88	2.90	2.65	2.62	2.47
Bread	17.2	loaf	1.70	1.68	1.68	1.70	1.70	1.72
Corned Beef (a)	15.9	12 oz	8.22	8.22	8.17	8.13	8.13	8.13
Taro	15.2	kg	1.91	2.09	2.38	2.07	2.10	2.56
Re-packed medium grain rice	13.4	kg	3.24	3.24	3.22	2.96	2.96	2.93
Prepacked medium grain rice (a)	13.4	907g	3.00	3.08	3.08	2.98	3.28	3.23
Canned fish between \$3.00 and \$3.99 Natural Oil	12.7	15 oz	3.49	3.52	3.53	3.45	3.40	3.42
Bongo	10.2	20grms	0.83	0.83	0.84	0.79	0.78	0.80
Keke Saina Biscuits (a)	9.2	pkt 10	6.50	6.54	6.54	6.39	6.29	6.25
Tip Top Ice Cream (a)	9.2	2 ltr	15.03	15.07	14.93	15.32	15.32	15.32
Ramen maggie	9.0	85gms	1.12	1.12	1.12	1.08	1.08	1.07
Fish (Piece)	7.9	kg	17.35	19.40	18.75	21.67	21.56	20.10
Butter Anchor	7.7	454g	13.46	13.46	13.46	14.46	14.14	14.07
Round Pancake (a)	7.5	sml	0.15	0.15	0.15	0.15	0.15	0.15
Mutton Flaps	6.6	kg	20.80	20.74	20.81	21.81	21.88	22.13
Canned fish \$4:00 or over N/Oil	6.4	15 oz	4.77	4.84	4.84	5.21	4.95	4.93
Canned fish under \$3.00 in N/Oil	6.4	15 oz	2.53	2.52	2.47	2.55	2.60	2.60
Wings Turkey	6.3	kg	6.61	5.65	5.50	6.27	6.49	6.17
Fish (string)	6.0	kg	9.97	10.02	9.99	10.84	11.06	10.73
Fish (large)	6.0	kg	15.90	16.53	17.35	17.51	15.93	19.43
02 Alcoholic beverages, tobacco and narcotics								
Lager Beer	37.9	355 mls	3.54	3.56	3.63	3.64	3.59	3.56
Pall Mall Filter Cigarettes (Red)	24.3	20 rolls	12.60	12.60	12.60	13.40	13.40	13.40
Pall Mall Menthol Cigarettes (Green)	24.3	20 rolls	12.60	12.60	12.60	13.40	13.40	13.40
Beer (a)	16.3	330 mls	3.34	3.34	3.34	3.36	3.36	3.36
Winfield Tobacco (a)	12.6	packet	15.00	15.00	15.00	15.00	15.00	15.00
03 Clothing and footwear								
Uniform le Faitaga College boys	4.3	size 8-10	31.33	31.33	31.33	29.67	29.67	29.67
Uniform Pa'ave (a)	3.7	size 7	32.67	32.67	32.67	35.33	35.33	35.33
04 Housing, water, electricity, gas and other fuels								
Electricity / Cashpower / kw h 1- 100 / total cost per u	50.6	kw h	0.59	0.62	0.60	0.67	0.67	0.67
Reservoir treated Water	28.5	15-40 m3	1.40	1.40	1.40	1.40	1.40	1.40
Liquid gas	15.8	9kg	61.00	61.00	61.00	62.00	62.00	62.00
Government house Rent	12.2	2 b/room	650.00	650.00	650.00	650.00	650.00	650.00

05 Furnishings, household equipment and routine household maintenance

Washing powder (a)	6.3	200g	1.81	1.82	1.82	1.73	1.71	1.60
Soap yellow Washing soap	5.9	bar	2.98	2.93	2.88	2.69	2.69	2.74
Mosquito coil	4.4	10 coil	1.18	1.18	1.18	1.20	1.20	1.20

06 Health

Amoxicillin mg Tablets (a)	2.5	500 mg	6.83	6.83	6.83	7.58	7.58	7.58
Hospital Charge	1.1	night	22.50	22.50	22.50	22.50	22.50	22.50

07 Transport

Petrol	60.8	1 ltr	2.69	2.63	2.67	2.40	2.48	2.69
Taxi Fare PO Motootua Hosp	8.2	per trip	4.80	4.80	4.80	4.80	4.80	4.80
Taxi Fares PO Malua	8.2	per trip	31.30	31.30	31.30	31.30	31.30	31.30
Taxi Fares PO Falefa	8.2	per trip	43.20	43.20	43.20	43.20	43.20	43.20
Air Fares Fagalii Pago Fagalii	6.8	return trip	380.00	380.00	380.00	395.00	395.00	395.00
Air Fares Apia Auckland Apia	6.8	1 month	1057.20	1305.77	1544.53	1259.11	1234.21	1441.63

08 Communication

Calling per minute Rate cell phone (a)	10.02	per minute	0.45	0.45	0.45	0.45	0.45	0.43
Internet data bundles per mb Rate (a)	10.02	per mb	0.25	0.25	0.25	0.25	0.25	0.25
Calling per minute Rate cell phone (a)	10.02	per minute	0.44	0.44	0.44	0.44	0.44	0.44
Internet data bundles per mb Rate (a)	10.02	per mb	0.20	0.20	0.20	0.20	0.20	0.20

09 Recreation and culture

Television (a)	2.30	LCD	966.00	966.00	966.00	918.83	918.83	861.00
Exercise Book w arwick	1.44	1B4 64 pa	1.45	1.45	1.45	1.35	1.37	1.37
Laptop (a)	1.33	each	2952.60	2998.60	2998.60	2938.60	2938.60	2918.60

10 Education

Fees PTA Primary Y Urban Registration fees (a)	7.23	Year 6	82.50	82.50	82.50	82.50	82.50	82.50
Fees PTA Secondary Y Urban Registration fees (a)	5.11	Year 10	52.00	52.00	52.00	50.00	50.00	58.00
Fees Tertiary NUS registration School Fees	3.79	registration	320.00	320.00	320.00	322.00	322.00	322.00
Fees Secondary Y Examination Fees (a)	3.61	Y12-13	25.50	25.50	25.50	25.50	25.50	25.50

11 Restaurants and hotels

Fish & Chip Meal	7.79	1 serve	9.17	9.17	9.17	9.17	9.17	9.17
Curry & Chopsuey Meal	4.87	1 serve	3.00	3.00	3.00	3.67	3.67	3.67
Chicken & Chips Meal (a)	4.87	1 serve	9.36	9.36	9.36	9.36	9.64	9.64
Steam rice & chicken Meal (a)	4.87	1 serve	4.83	4.83	4.83	4.83	4.83	4.83

12 Miscellaneous goods and services

Paper Sofan deluxe ply Toilet Paper	8.52	250 sheet	0.98	1.00	1.00	1.03	1.03	1.03
Hair Gel	4.59	1124ml	4.31	4.31	4.39	4.40	4.43	4.43
Price for Storage of remains (a)	4.41	per day	60.00	60.00	60.00	60.00	60.00	60.00
Basic Casket (a)	4.41	each	1966.67	1966.67	1966.67	1966.67	1966.67	1966.67
Standard Embalming (a)	4.41	1 person	1500.00	1500.00	1500.00	1500.00	1500.00	1500.00
Toilet soap (a)	4.38	90g	1.83	1.85	1.86	1.89	1.84	1.85
Diapers (a)	4.19	5kg-10kg	9.97	9.97	9.97	9.14	9.13	9.13

Source : Samoa Bureau Statistics

(a) : New commodity from February 2016

(P) : Provisional figures

Note : Please note unit of conversion was in pound's (lb's) but been converted into kilograms (kg)

Table 4. IMPORTED GOODS COMPONENT OF THE CONSUMER PRICE INDEX

(Base Period : Average Prices February 2016 = 100)

Group	All Items	Food and Non Alcoholic Beverages	Alcoholic Beverages, Tobacco and Narcotics	Clothing and Footwear	Housing, Water , Electricity, Gas and other Fuels	Furnishings, Household Equipment and Maintenance	Health	Transport	Communication	Recreation and Culture	Education	Restaurants	Miscellaneous goods and services
<i>Weights</i>	494.7	269.1	23.8	15.2	28.3	26.9	2.5	88.6	<i>n.a</i>	5.6	<i>n.a</i>	<i>n.a</i>	34.7
<i>Ave - 2016</i>	102.5	103.9	105.1	98.8	98.7	99.3	98.5	101.8		95.0			100.7
<i>Ave - 2017</i>	107.3	110.1	110.0	97.0	97.6	98.9	91.7	111.2		90.0			97.1
<i>Ave - 2018</i>	111.9	113.8	113.5	96.1	100.6	97.6	94.3	124.0		92.0			96.6
2018													
May	111.6	114.3	114.9	95.6	99.3	98.1	91.1	120.7		92.7			96.8
June	115.5	120.5	115.0	95.6	100.6	96.9	91.1	123.8		92.7			96.5
July	115.6	119.4	115.0	95.5	101.0	97.2	97.1	127.2		92.7			97.2
August	114.7	118.8	115.0	95.5	100.1	96.7	97.1	124.5		91.3			97.1
September	113.9	116.6	115.0	95.5	100.9	97.9	97.1	126.2		91.4			96.8
October	113.8	116.2	115.0	97.0	101.9	97.5	97.1	126.5		93.3			96.9
November	111.7	111.1	115.0	97.2	103.0	97.2	97.1	129.6		91.7			96.9
December	108.6	106.2	115.0	97.6	102.9	96.3	99.8	127.3		90.2			97.2
2019													
January	105.2	103.9	115.0	94.5	101.8	97.2	99.8	116.3		90.3			97.0
February	107.4	110.0	116.6	95.4	100.0	95.6	99.8	110.4		90.3			97.5
March	109.2	113.2	119.5	94.8	99.8	94.8	97.5	110.3		89.0			97.2
April	109.3	112.4	119.6	95.1	100.5	94.5	97.5	113.4		89.3			96.9
May (P)	110.6	112.7	119.3	95.5	101.2	92.6	97.5	120.3		87.3			96.9
<u>Percentage Change (P)</u>													
May 2019 over Apr 2019	1.2%	0.3%	-0.3%	0.4%	0.7%	-2.0%	0.0%	6.0%		-2.3%			0.0%
May 2019 over May 2018	-0.8%	-1.4%	3.8%	0.0%	1.9%	-5.6%	7.0%	-0.3%		-5.9%			0.1%

Source : Samoa Bureau Statistics

(P) : Provisional figures

Note : n.a. Not applicable

Table 5. IMPORTED ITEMS UNDERLYING INDEX

(Base Period : Average Prices February 2016 = 100)

Group	All Items	Food and Non Alcoholic Beverages	Alcoholic Beverages, Tobacco and Narcotics	Clothing and Footwear	Housing, Water , Electricity, Gas and other Fuels	Furnishings, Household Equipment and Maintenance	Health	Transport	Communication	Recreation and Culture	Education	Restaurants	Miscellaneous goods and services
Weights	401.2	269.1	n.a	15.2	24.2	26.9	2.5	23.0	n.a	5.6	n.a	n.a	34.7
Ave - 2016	102.4	103.9		98.8	97.5	99.3	98.5	100.1		95.0			100.7
Ave - 2017	106.0	110.1		97.0	93.8	98.9	91.7	104.5		90.0			97.1
Ave - 2018	108.8	113.8		96.1	93.4	97.6	94.3	111.2		92.0			96.6
2018													
May	109.2	114.3		95.6	93.1	98.1	91.1	113.1		92.7			96.8
June	113.2	120.5		95.6	93.3	96.9	91.1	112.9		92.7			96.5
July	112.6	119.4		95.5	93.2	97.2	97.1	111.7		92.7			97.2
August	112.0	118.8		95.5	92.6	96.7	97.1	111.7		91.3			97.1
September	110.6	116.6		95.5	92.9	97.9	97.1	110.1		91.4			96.8
October	110.3	116.2		97.0	94.0	97.5	97.1	107.5		93.3			96.9
November	106.9	111.1		97.2	94.5	97.2	97.1	107.7		91.7			96.9
December	103.6	106.2		97.6	94.1	96.3	99.8	108.1		90.2			97.2
2019													
January	101.9	103.9		94.5	94.5	97.2	99.8	107.3		90.3			97.0
February	105.9	110.0		95.4	94.9	95.6	99.8	106.2		90.3			97.5
March	108.0	113.2		94.8	94.7	94.8	97.5	107.3		89.0			97.2
April	107.5	112.4		95.1	94.6	94.5	97.5	108.3		89.3			96.9
May (P)	107.6	112.7		95.5	94.6	92.6	97.5	108.3		87.3			96.9
<u>Percentage Change (P)</u>													
May 2019 over Apr 2019	0.1%	0.3%		0.4%	0.0%	-2.0%	0.0%	0.0%		-2.3%			0.0%
May 2019 over May 2018	-1.5%	-1.4%		0.0%	1.6%	-5.6%	7.0%	-4.2%		-5.9%			0.1%

Source : Samoa Bureau Statistics

(P) : Provisional figures

Note : n.a. Not applicable

Table 6. LOCAL GOODS COMPONENT OF THE CONSUMER PRICE INDEX

(Base Period : Average Prices February 2016 = 100)

Group	All Items	Food and Non Alcoholic Beverages	Alcoholic Beverages, Tobacco and Narcotics	Clothing and Footwear	Housing, Water , Electricity, Gas and other Fuels	Furnishings, Household Equipment and Maintenance	Health	Transport	Communication	Recreation and Culture	Education	Restaurants	Miscellaneous goods and services
Weights	505.3	134.6	104.6	6.0	91.3	3.9	2.2	59.9	51.5	0.4	19.7	22.4	8.8
Ave - 2016	99.7	102.5	102.3	98.6	90.7	100.0	100.0	100.5	100.0	100.0	101.1	99.3	
Ave - 2017	98.6	95.0	107.1	95.7	90.6	100.1	100.0	101.6	101.2	100.0	97.9	98.3	102.3
Ave - 2018	102.6	105.3	112.0	93.3	88.1	100.3	100.0	101.7	103.3	100.0	110.4	99.0	102.3
2018													
May	103.2	107.8	112.0	93.7	86.8	100.3	100.0	103.1	103.4	100.0	111.6	98.6	102.3
June	101.8	104.9	111.4	93.7	84.3	100.3	100.0	102.4	103.4	100.0	111.6	98.6	102.3
July	103.9	111.3	111.3	93.7	86.2	100.3	100.0	102.8	103.4	100.0	111.6	98.6	102.3
August	104.2	109.2	112.8	93.6	90.6	100.3	100.0	100.8	103.4	100.0	111.6	98.6	102.3
September	103.6	106.1	113.3	93.0	91.3	100.3	100.0	101.1	103.4	100.0	111.6	98.6	102.3
October	104.1	104.9	113.5	93.6	93.2	100.3	100.0	104.1	103.4	100.0	111.6	98.6	102.3
November	101.5	101.9	113.3	93.5	85.5	100.3	100.0	100.2	103.4	100.0	111.6	100.6	102.3
December	104.0	108.7	113.2	93.0	85.5	100.3	100.0	107.5	102.9	100.0	111.6	100.6	102.3
2019													
January	103.9	110.1	115.5	91.8	85.5	100.3	100.0	98.8	102.9	100.0	111.6	100.6	102.3
February	103.2	105.1	116.2	94.8	85.5	100.3	100.0	103.2	102.9	100.0	110.5	100.6	102.3
March	104.9	107.5	116.2	94.2	91.3	100.3	103.0	100.7	105.2	100.0	110.6	102.8	102.3
April	104.4	106.2	115.6	94.6	91.3	100.3	103.0	100.5	105.2	100.0	110.6	103.4	102.3
May (P)	105.5	109.4	115.1	94.7	91.3	100.3	103.0	102.4	104.3	100.0	114.9	103.4	102.3
<u>Percentage Change (P)</u>													
May 2019 over Apr 2019	1.0%	3.1%	-0.4%	0.1%	0.0%	0.0%	0.0%	1.8%	-0.8%	0.0%	3.8%	0.0%	0.0%
May 2019 over May 2018	2.2%	1.6%	2.8%	1.1%	5.1%	0.0%	3.0%	-0.7%	0.9%	0.0%	3.0%	4.8%	0.0%

Source : Samoa Bureau Statistics

(P) : Provisional figures

Note : n.a. Not applicable

Table 7. LOCAL ITEMS UNDERLYING INDEX

(Base Period : Average Prices February 2016 = 100)

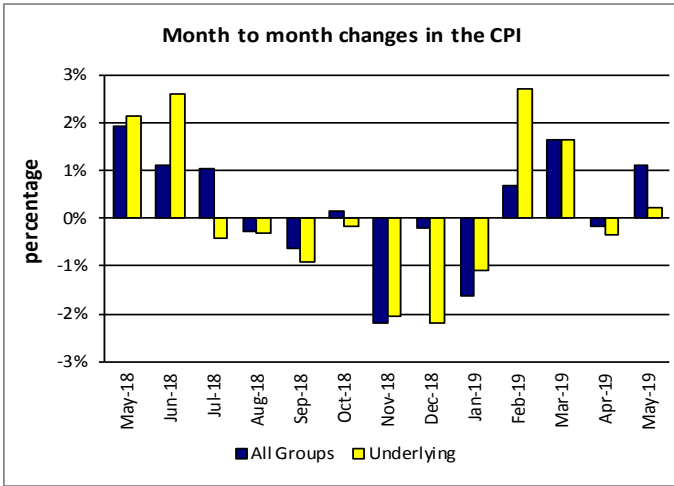
Group	All Items	Food and Non Alcoholic Beverages	Alcoholic Beverages, Tobacco and Narcotics	Clothing and Footwear	Housing, Water , Electricity, Gas and other Fuels	Furnishings, Household Equipment and Maintenance	Health	Transport	Communication	Recreation and Culture	Education	Restaurants	Miscellaneous goods and services
Weights	185.5	76.1	n.a	6.0	n.a	3.9	1.0	3.4	51.5	n.a	12.3	22.4	8.8
Ave - 2016	100.3	100.6		98.6		100.0	100.0	101.0				99.3	
Ave - 2017	99.9	100.1		95.7		100.1	100.0	101.8	101.2		96.7	98.3	102.3
Ave - 2018	101.9	100.3		93.3		100.3	100.0	108.3	103.3		114.0	99.0	102.3
2018													
May	101.8	99.8		93.7		100.3	100.0	108.6	103.4		115.6	98.6	102.3
June	102.0	100.2		93.7		100.3	100.0	108.6	103.4		115.6	98.6	102.3
July	101.9	100.0		93.7		100.3	100.0	108.6	103.4		115.6	98.6	102.3
August	101.9	100.2		93.6		100.3	100.0	108.6	103.4		115.6	98.6	102.3
September	102.0	100.3		93.0		100.3	100.0	108.6	103.4		115.6	98.6	102.3
October	102.0	100.4		93.6		100.3	100.0	108.6	103.4		115.6	98.6	102.3
November	102.4	100.7		93.5		100.3	100.0	108.6	103.4		115.6	100.6	102.3
December	102.2	100.7		93.0		100.3	100.0	108.6	102.9		115.6	100.6	102.3
2019													
January	102.2	100.7		91.8		100.3	100.0	108.6	102.9		115.6	100.6	102.3
February	102.4	101.1		94.8		100.3	100.0	108.6	102.9		113.9	100.6	102.3
March	103.3	101.3		94.2		100.3	106.3	108.6	105.2		113.9	102.8	102.3
April	103.3	101.0		94.6		100.3	106.3	108.6	105.2		113.9	103.4	102.3
May (P)	103.8	101.7		94.7		100.3	106.3	108.6	104.3		120.6	103.4	102.3
<u>Percentage Change (P)</u>													
May 2019 over Apr 2019	0.5%	0.7%		0.1%		0.0%	0.0%	0.0%	-0.8%		5.9%	0.0%	0.0%
May 2019 over May 2018	2.0%	1.9%		1.1%		0.0%	6.3%	0.0%	0.9%		4.4%	4.8%	0.0%

Source : Samoa Bureau Statistics

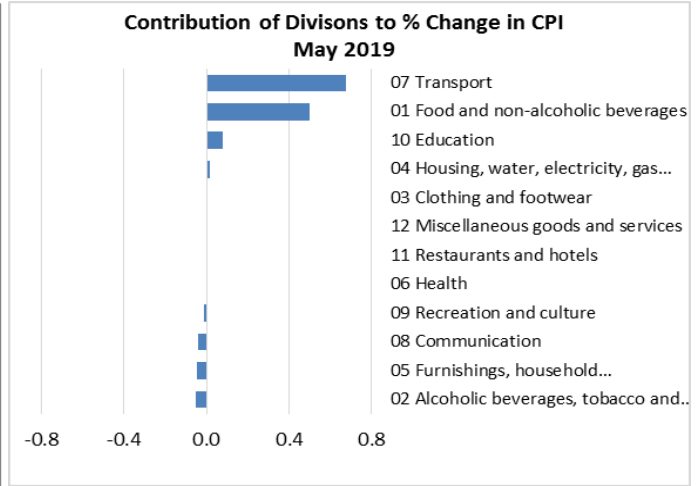
(P) : Provisional figures

Note : n.a. Not applicable

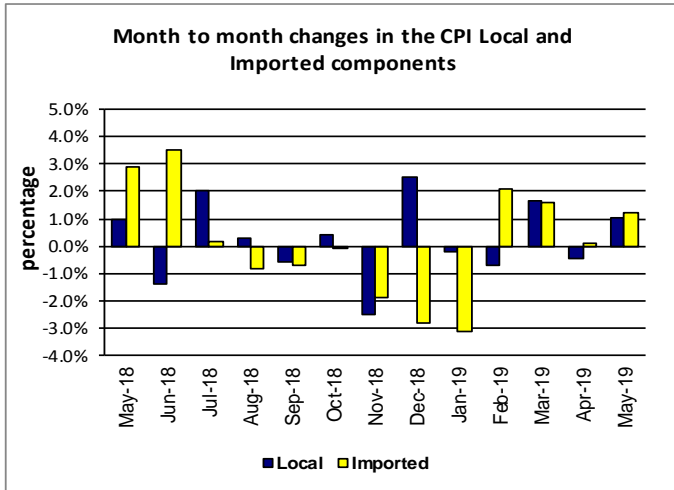
Graph.5



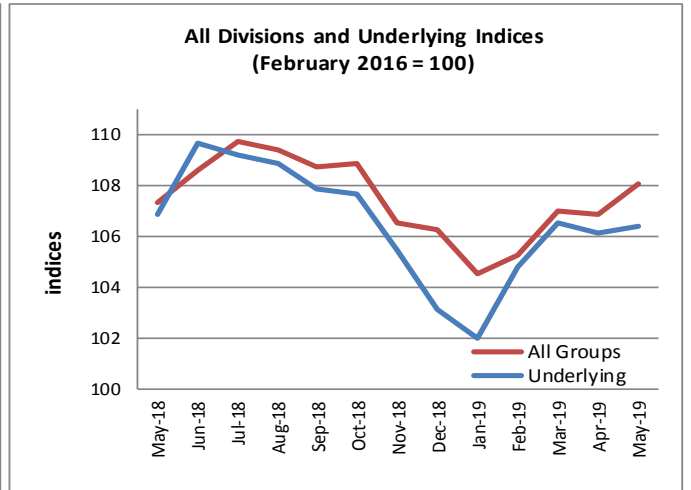
Graph.6



Graph.7



Graph.8



Graph.9

