

Please address all correspondence
To Government Statistician
In reply, please quote the file reference



GOVERNMENT OF SAMOA

File Ref: CPI 10/2020

SAMOA BUREAU OF STATISTICS

CONSUMER PRICE INDEX OCTOBER 2020

Key findings:

The Consumer Price Index for October 2020 decreased by 1.9 percent compared to the previous month.

- The Food and Non Alcoholic Beverages index decreased by 4.8 percent following a 4.2 percent decline last month.
- Transport index increased by 1.0 percent.
- The Average Annual Inflation for the year ended October 2020 was negative 0.2 percent.

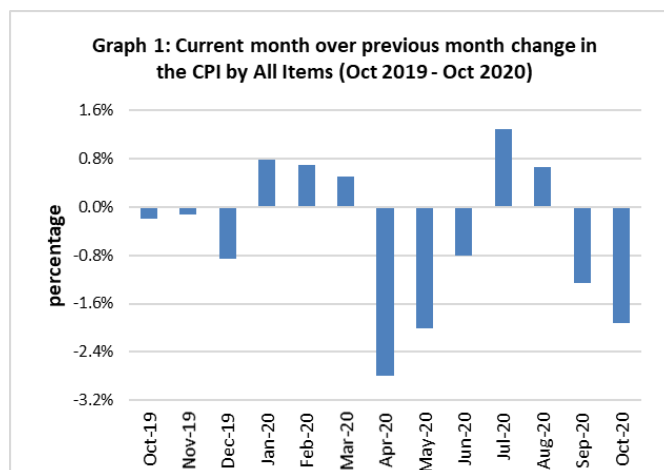
The CPI fell 5.8 percent from October 2019

SUMMARY

The Consumer Price Index for October 2020 was 1.9 percent lower than in September 2020 and was 5.8 percent lower than October 2019.

The decrease of the Imported Goods component by 3.5 percent from the previous month was due to lower prices for Imported food and paint, which were also the main contributors to the decrease of 1.9 percent in the All Items Consumer Price Index.

The Local Goods Component registered a decrease of 0.3 percent from the previous month. Graph 1 shows the month to month percentage changes in the Consumer Price Index by All Divisions from October 2019 to October 2020.

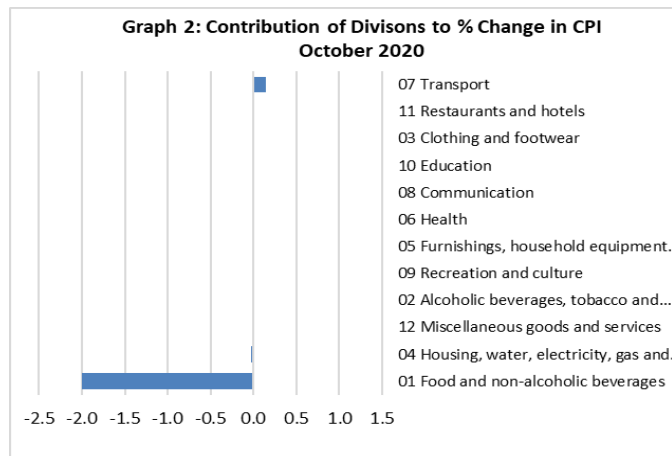


Source : Samoa Bureau of Statistics

Total All Divisions Contribution

As depicted in Graph 2, Food and Non Alcoholic Beverages division, with a negative contribution of 1.99 percent, was the main contributor to the overall decrease of 1.9 percent in the All Division Consumer Price Index.

On the other hand, there were offsetting positive contributions from Transport with 0.14 percent increase.



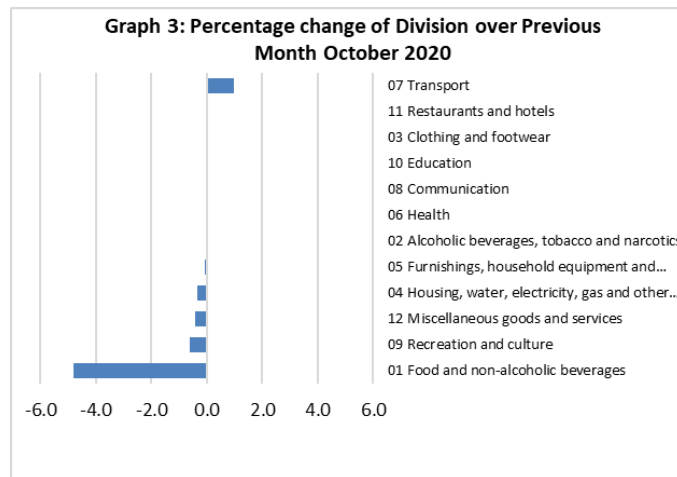
Source : Samoa Bureau of Statistics

Consumer Price Index (% Change)

The 1.9 percent decrease in the Overall Index was mainly due to a decrease of 4.8 percent in the Food and Non Alcoholic Beverages index. The Recreation and Culture index also registered a decrease of 0.6 percent, while Miscellaneous Goods and Services, Housing, Water, Electricity, Gas and other Fuels and Furnishing, Household Equipment and Maintenance indices showed decreases of 0.4, 0.3 and 0.1 percent respectively.

On the other contrary, Transport index recorded an increase of 1.0 percent.

No changes were recorded for the Alcoholic Beverages and Tobacco, Clothing and Footwear, Health, Communication, Education and Restaurants indices. Graphically presented in Graph 3 is the October 2020 percentage change for all divisions from September 2020.



Source : Samoa Bureau of Statistics

Imported Goods Component

The Imported Goods Component of the Consumer Price Index registered a decrease of 3.5 percent when compared to the previous month. This decrease was mainly due to lower prices recorded for imported food, paint, laptop and tooth paste.

Local Goods Component

Decreased prices recorded for local food have resulted in the 0.3 percent decrease in the Local Good Component.

Food and Non Alcoholic Beverages Index

A decrease of 4.8 percent in the Food and Non Alcoholic Beverages index was a reflection of the lower prices recorded for chicken leg quarter, raw sugar, taro, rice, banana, tomato, coconut, taamu and head cabbage.

Recreation and Culture Index

The Recreation and Culture index recorded a decrease of 0.6 percent lower due to the decrease in prices recorded for laptop.

Miscellaneous Goods and Services Index

Lower prices recorded for tooth paste is reflected in the 0.4 percent decrease in the Miscellaneous Good and Services index.

Transport Index

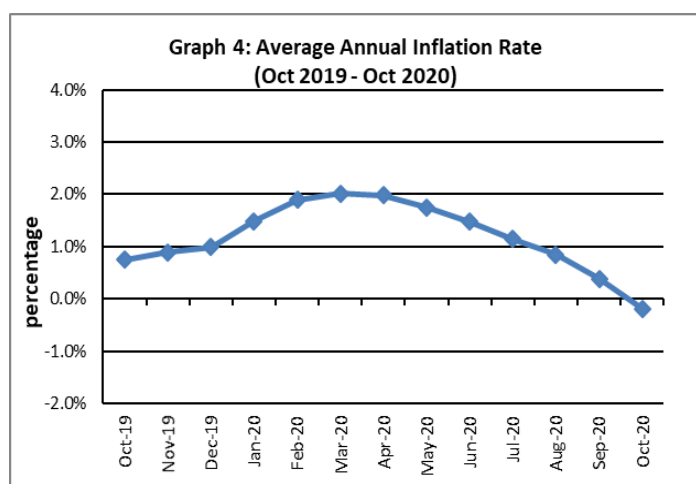
The 1.0 percent increase in the Transport index was a result of the higher prices recorded for fuel (petrol).

Underlying Indices ^{1/}

The All Items Underlying Index for October 2020 registered a decrease of 3.2 percent when compared to September 2020, and a decrease of 6.1 percent when compared to October 2019. The Imported Items Underlying Index registered a decrease of 4.7 percent, while the Local Items Underlying Index recorded an increase of 0.1 percent from the previous month.

Inflation Rate

The average annual inflation rate for the year ended October 2020 was negative 0.2 percent. For the twelve months ending October 2019 the inflation rate was 0.8 percent. Presented in Graph 4 is the average annual inflation rate (October 2019 - October 2020).



Source : Samoa Bureau of Statistics

The attached Tables and Graphs provide the user with more detailed analysis.

Technical Notes:

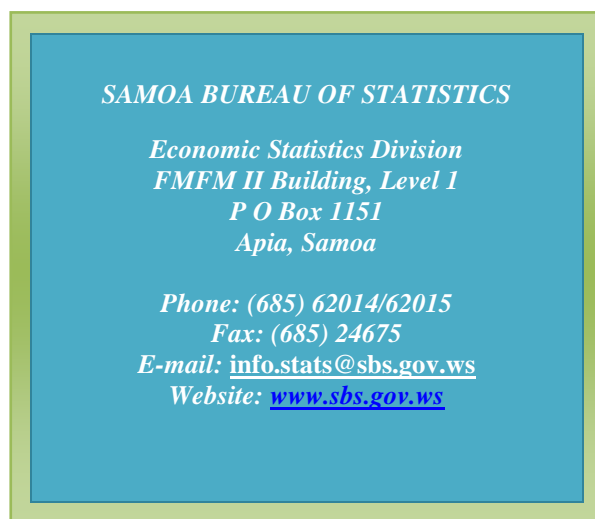
The Consumer Price (CPI) measures the rate of inflation for Samoa. It is designed to measure the change in prices for the goods purchased by households in Samoa. The CPI measures the change in prices by comparing the prices for a basket of goods and services at the collection period with the price for the same goods in a base period.

The basket of goods that is priced is based on the average expenditures of households as recorded in the Household Income and Expenditure Survey (HIES). The HIES survey identifies how much households spend on different items. The more households spend on an item

on average, the more important it is to the price index, and the higher the weight in the index.

^{1/} *Monthly movements in the 'headline' CPI series can be volatile. This volatility reflects price changes in particular items that may be due, among other factors, to fluctuations in commodity markets and agricultural conditions, policy changes, or seasonal or infrequent price resetting.*

Underlying inflation is a measure of inflation that excludes certain items that face volatile price movements. Underlying inflation eliminates products that can have temporary price shocks because these shocks can diverge from the overall trend of inflation and give a false measure of inflation.



Date of release: 10th November 2020.

The next Consumer Price Index will be released on 9th December 2020.

Leota Aliielua Salani.

**ACTING GOVERNMENT STATISTICIAN/
(ACTING CEO)**

Table 1. CONSUMER PRICE INDEX.

(Base Period : Average Prices February 2016 = 100)

Group	All Items	Food and Non Alcoholic Beverages	Alcoholic Beverages, Tobacco and Narcotics	Clothing and Footwear	Housing, Water, Electricity, Gas and other Fuels	Furnishings, Household Equipment, and Maintenance	Health	Transport	Communication	Recreation and Culture	Education	Restaurants	Miscellaneous goods and services
<i>Weights</i>	1000.0	403.7	128.4	21.2	119.6	30.8	4.6	148.5	51.5	6.1	19.7	22.4	43.5
<i>Ave - 2017</i>	102.9	105.1	107.6	96.6	92.2	99.1	95.6	107.3	101.2	90.7	97.9	98.3	98.1
<i>Ave - 2018</i>	107.2	111.0	112.3	95.3	91.0	98.0	97.0	115.0	103.3	92.6	110.4	99.0	97.8
<i>Ave - 2019</i>	108.3	112.1	116.8	93.8	95.0	96.4	100.0	111.3	104.2	88.7	113.5	103.3	97.8
2019													
October	109.9	114.6	117.7	92.3	98.1	96.8	100.1	112.6	104.3	87.1	114.9	103.4	97.5
November	109.8	113.2	117.5	93.0	97.8	97.3	100.1	115.5	104.3	89.5	114.9	103.4	97.4
December	108.9	112.3	117.3	93.4	97.7	96.8	100.1	111.1	104.3	89.5	114.9	108.3	98.2
2020													
January	109.7	112.7	119.7	93.3	99.1	96.8	100.1	112.6	104.2	89.5	114.9	108.3	98.0
February	110.5	115.1	119.3	93.5	97.3	97.6	100.1	113.0	104.2	89.5	114.9	108.3	97.7
March	111.0	117.1	119.3	93.5	96.6	97.7	100.1	111.8	104.2	89.5	114.9	108.3	97.9
April	107.9	113.2	118.9	93.5	86.3	98.1	100.1	109.8	104.2	88.0	114.9	108.3	98.8
May	105.8	110.5	118.9	93.5	86.0	98.8	100.1	102.3	104.2	88.0	114.9	108.3	99.7
June	104.9	110.6	119.1	93.5	85.4	98.5	97.6	96.8	104.2	88.0	114.9	108.3	99.9
July	106.3	113.1	120.8	93.4	85.4	97.7	97.6	97.8	104.2	88.0	114.9	108.3	99.8
August	107.0	113.7	121.0	93.7	85.2	98.3	97.6	100.8	104.2	88.6	114.9	108.9	99.3
September	105.6	108.9	120.9	93.7	88.7	98.0	97.6	101.6	104.2	88.6	114.9	111.4	98.9
October (P)	103.6	103.7	120.9	93.7	88.4	98.0	97.6	102.6	104.2	88.1	114.9	111.4	98.5

Percentage Change (P)

Oct 2020													
over	-1.9%	-4.8%	0.0%	0.0%	-0.3%	-0.1%	0.0%	1.0%	0.0%	-0.6%	0.0%	0.0%	-0.4%
Sep 2020													
Oct 2020													
over	-5.8%	-9.5%	2.7%	1.5%	-9.9%	1.2%	-2.5%	-8.9%	-0.1%	1.1%	0.0%	7.8%	1.0%
Oct 2019													

Source : Samoa Bureau Statistics

(P) : Provisional figures

Note : n.a. Not applicable

Table 2. ALL ITEMS UNDERLYING INDEX

(Base Period : Average Prices February 2016 = 100)

Group	All Items	Food and Non Alcoholic Beverages	Alcoholic Beverages, Tobacco and Narcotics	Clothing and Footwear	Housing, Water, Electricity, Gas and other Fuels	Furnishings, Household Equipment, and Maintenance	Health	Transport	Communication	Recreation and Culture	Education	Restaurants	Miscellaneous goods and services
<i>Weights</i>	586.7	345.3	<i>n.a</i>	21.2	24.2	30.8	3.5	26.4	51.5	5.6	12.3	22.4	43.5
<i>Ave - 2017</i>	104.1	107.9		96.6	93.8	99.1	94.2	104.2	101.2	90.0	96.7	98.3	98.1
<i>Ave - 2018</i>	106.6	110.8		95.3	93.4	98.0	96.0	110.8	103.3	92.0	114.0	99.0	97.8
<i>Ave - 2019</i>	107.2	111.6		93.8	94.6	96.4	100.1	108.1	104.2	87.9	118.5	103.3	97.8
2019													
October	109.3	115.1		92.3	94.8	96.8	100.1	109.1	104.3	86.2	120.6	103.4	97.5
November	109.0	114.5		93.0	94.8	97.3	100.1	109.1	104.3	88.7	120.6	103.4	97.4
December	108.4	113.3		93.4	94.9	96.8	100.1	106.9	104.3	88.7	120.6	108.3	98.2
2020													
January	107.2	111.3		93.3	94.8	96.8	100.1	106.9	104.2	88.7	120.6	108.3	98.0
February	109.1	114.5		93.5	94.6	97.6	100.1	106.9	104.2	88.7	120.6	108.3	97.7
March	110.3	116.5		93.5	94.0	97.7	100.1	106.9	104.2	88.7	120.6	108.3	97.9
April	108.3	112.8		93.5	93.6	98.1	100.1	110.3	104.2	87.0	120.6	108.3	98.8
May	106.7	109.9		93.5	95.0	98.8	100.1	110.2	104.2	87.0	120.6	108.3	99.7
June	106.7	109.8		93.5	95.2	98.5	96.8	110.4	104.2	87.0	120.6	108.3	99.9
July	108.1	112.2		93.4	95.5	97.7	96.8	110.4	104.2	87.0	120.6	108.3	99.8
August	108.3	112.8		93.7	93.0	98.3	96.8	110.0	104.2	87.8	120.6	108.9	99.3
September	106.0	108.6		93.7	93.3	98.0	96.8	111.9	104.2	87.8	120.6	111.4	98.9
October (P)	102.6	103.1		93.7	91.8	98.0	96.8	111.3	104.2	87.2	120.6	111.4	98.5
<u>Percentage Change (P)</u>													
Oct 2020													
over	-3.2%	-5.1%		0.0%	-1.6%	-0.1%	0.0%	-0.5%	0.0%	-0.7%	0.0%	0.0%	-0.4%
Sep 2020													
Oct 2020													
over	-6.1%	-10.5%		1.5%	-3.2%	1.2%	-3.3%	2.0%	-0.1%	1.2%	0.0%	7.8%	1.0%
Oct 2019													

Source : Samoa Bureau Statistics

(P) : Provisional figures

Note : n.a. Not applicable

Table 3. AVERAGE RETAIL PRICES OF SELECTED COMMODITIES

Commodities	Wt	Unit	2019			2020		
			Aug	Sep	Oct	Aug	Sep	Oct (P)
01 Food and non-alcoholic beverages								
Leg Quarters Chicken	62.2	kg	4.99	5.01	4.97	4.40	3.80	3.10
Raw Sugar	21.3	kg	2.44	2.48	2.45	2.75	2.69	2.48
Bread	17.2	loaf	1.72	1.72	1.69	1.67	1.67	1.67
Corned Beef (a)	15.9	340 grms	8.05	8.03	8.03	8.20	8.20	8.20
Taro	15.2	kg	3.01	2.86	2.47	3.05	2.87	2.65
Re-packed medium grain rice	13.4	kg	2.82	3.01	2.93	2.85	2.83	2.72
Prepacked medium grain rice (a)	13.4	907 grms	3.08	3.10	3.03	2.85	2.85	2.85
Canned fish between \$3.00 and \$3.99 Natural Oil	12.7	425 grms	3.44	3.27	3.37	3.44	3.46	3.34
Bongo	10.2	20 grms	0.80	0.80	0.80	0.85	0.85	0.83
Keke Saina Biscuits (a)	9.2	pkt 10	6.25	6.27	6.18	6.17	6.17	6.17
Ice Cream (a)	9.2	2 ltr	15.32	15.33	15.18	15.17	15.33	15.33
Ramen	9.0	85 grms	1.08	1.08	1.07	1.09	1.09	1.09
Fish (Piece)	7.9	kg	21.04	17.31	20.39	24.55	21.95	21.49
Butter	7.7	454 grms	15.50	15.49	15.77	15.69	15.44	15.44
Round Pancake (a)	7.5	sml	0.15	0.15	0.15	0.15	0.15	0.15
Mutton Flaps	6.6	kg	22.20	22.62	22.11	24.98	24.74	24.33
Canned fish \$4:00 or over N/Oil	6.4	425 grms	4.85	4.84	4.87	5.03	5.11	5.20
Canned fish under \$3.00 in N/Oil	6.4	425 grms	2.53	2.58	2.60	2.82	2.82	2.82
Wings Turkey	6.3	kg	6.24	6.30	7.21	7.55	7.76	7.46
Fish (string)	6.0	kg	11.39	12.54	10.96	10.57	9.94	11.18
Fish (large)	6.0	kg	20.55	19.81	19.57	18.26	17.75	18.11
02 Alcoholic beverages, tobacco and narcotics								
Lager Beer	37.9	355 mls	3.58	3.58	3.60	3.62	3.63	3.63
Pall Mall Filter Cigarettes (Red)	24.3	20 rolls	13.80	13.80	13.80	14.60	14.60	14.60
Pall Mall Menthol Cigarettes (Green)	24.3	20 rolls	13.80	13.80	13.80	14.60	14.60	14.60
Beer (a)	16.3	330 mls	3.40	3.36	3.36	3.46	3.48	3.48
Tobacco (a)	12.6	30 grms	15.00	15.00	15.00	15.00	15.00	15.00
03 Clothing and footwear								
Uniform le Faitaga College boys	4.3	size 8-10	29.67	29.67	29.67	29.67	29.67	29.67
Uniform Pa'ave (a)	3.7	size 7	32.00	32.00	31.00	31.00	31.00	31.00
04 Housing, water, electricity, gas and other fuels								
Electricity Cashpower	50.6	kw h	0.67	0.67	0.67	0.51	0.58	0.58
Reservoir treated Water	28.5	15-40 m3	1.67	1.67	1.67	1.47	1.47	1.47
Liquid gas	15.8	9kg	62.00	62.00	62.00	59.25	59.25	59.25
Government house Rent	12.2	2 b/room	650.00	650.00	650.00	650.00	650.00	650.00

05 Furnishings, household equipment and routine household maintenance

Washing powder (a)	6.3	200 grms	1.90	1.90	1.84	1.87	1.88	1.88
Soap yellow Washing soap	5.9	bar	2.75	2.76	2.76	2.80	2.72	2.71
Mosquito coil	4.4	10 coil	1.18	1.20	1.20	1.30	1.30	1.30

06 Health

Amoxicillin 500mg tablets (a)	2.5	20 tablets	7.58	7.58	7.58	7.00	7.00	7.00
Hospital Charge	1.1	per night	22.50	22.50	22.50	22.50	22.50	22.50

07 Transport

Petrol	60.8	1 ltr	2.53	2.64	2.62	2.13	2.15	2.21
Taxi Fare P.O to Motootua Hosp	8.2	per trip	4.80	4.80	4.80	4.80	4.80	4.80
Taxi Fares P.O to Malua	8.2	per trip	31.30	31.30	31.30	31.30	31.30	31.30
Taxi Fares P.O to Falefa	8.2	per trip	43.20	43.20	43.20	43.20	43.20	43.20
Air Fares Fagalii Pago Fagalii	6.8	return trip	395.00	395.00	395.00	395.00	395.00	395.00
Air Fares Apia Auckland Apia	6.8	1 month	1297.55	1443.92	1651.54	1257.87	1257.87	1257.87

08 Communication

Calling per minute Rate cell phone (a)	10.02	per minute	0.43	0.43	0.43	0.43	0.43	0.43
Internet data bundles per mb Rate (a)	10.02	per mb	0.25	0.25	0.25	0.25	0.25	0.25
Calling per minute Rate cell phone (a)	10.02	per minute	0.44	0.44	0.44	0.44	0.44	0.44
Internet data bundles per mb Rate (a)	10.02	per mb	0.20	0.20	0.20	0.20	0.20	0.20

09 Recreation and culture

Television LCD 32" (a)	2.30	LCD 32"	827.67	827.67	827.67	852.83	852.83	852.83
Exercise Book w arwick	1.44	1B4	1.37	1.37	1.37	1.40	1.40	1.40
Laptop (a)	1.33	each	2918.60	2918.60	2918.60	3018.60	3018.60	2938.60

10 Education

Fees PTA Primary Y Urban Registration fees (a)	7.23	Year 6	82.50	82.50	82.50	82.50	82.50	82.50
Fees PTA Secondary Y Urban Registration fees (a)	5.11	Year 10	58.00	58.00	58.00	58.00	58.00	58.00
Fees Tertiary NUS registration School Fees	3.79	registration	322.00	322.00	322.00	322.00	322.00	322.00
Fees Secondary Y Examination Fees (a)	3.61	Y12-13	25.50	25.50	25.50	25.50	25.50	25.50

11 Restaurants and hotels

Fish & Chip Meal	7.79	1 serve	9.17	9.17	9.17	9.17	9.58	9.58
Curry & Chopsuey Meal	4.87	1 serve	3.67	3.67	3.67	4.67	4.67	4.67
Chicken & Chips Meal (a)	4.87	1 serve	9.64	9.64	9.64	9.93	10.00	10.00
Steam rice & chicken Meal (a)	4.87	1 serve	4.83	4.83	4.83	4.83	5.00	5.00

12 Miscellaneous goods and services

Paper Sofan deluxe ply Toilet Paper	8.52	250 sheets	1.00	0.99	0.99	1.08	1.05	1.05
Hair Gel	4.59	1124 ml	4.43	4.40	4.40	4.47	4.47	4.47
Price for Storage of remains (a)	4.41	per day	60.00	60.00	60.00	60.00	60.00	60.00
Basic Casket (a)	4.41	each	1966.67	1966.67	1966.67	1966.67	1966.67	1966.67
Standard Embalming (a)	4.41	1 person	1500.00	1500.00	1500.00	1500.00	1500.00	1500.00
Toilet soap (a)	4.38	90g	1.96	1.96	1.96	1.95	1.97	1.97
Diapers (a)	4.19	5kg-10kg	8.99	8.99	8.99	8.46	8.33	8.33

Source : Samoa Bureau Statistics

(a) : New commodity from February 2016

(P) : Provisional figures

Note : Please note unit of conversion was in pound's (lb's) but been converted into kilograms (kg)

Table 4. IMPORTED GOODS COMPONENT OF THE CONSUMER PRICE INDEX
(Base Period : Average Prices February 2016 = 100)

Group	All Items	Food and Non Alcoholic Beverages	Alcoholic Beverages, Tobacco and Narcotics	Clothing and Footwear	Housing, Water , Electricity, Gas and other Fuels	Furnishings, Household Equipment and Maintenance	Health	Transport	Communication	Recreation and Culture	Education	Restaurants	Miscellaneous goods and services
<i>Weights</i>	494.7	269.1	23.8	15.2	28.3	26.9	2.5	88.6	<i>n.a</i>	5.6	<i>n.a</i>	<i>n.a</i>	34.7
<i>Ave - 2017</i>	107.3	110.1	110.0	97.0	97.6	98.9	91.7	111.2		90.0			97.1
<i>Ave - 2018</i>	111.9	113.8	113.5	96.1	100.6	97.6	94.3	124.0		92.0			96.6
<i>Ave - 2019</i>	111.1	114.5	118.3	93.7	100.8	95.8	97.9	117.3		87.9			96.7
2019													
October	113.5	118.8	117.9	92.4	100.8	96.3	97.5	118.1		86.2			96.2
November	113.7	118.1	118.7	93.4	101.3	96.9	97.5	120.5		88.7			96.1
December	112.4	116.3	117.8	93.4	101.0	96.3	97.5	118.8		88.7			97.2
2020													
January	111.5	113.8	117.8	93.4	101.0	96.3	97.5	121.4		88.7			96.9
February	113.8	118.1	117.8	93.4	101.3	97.2	97.5	120.8		88.7			96.5
March	114.8	120.7	117.4	93.1	100.3	97.3	97.5	119.2		88.7			96.8
April	111.6	116.0	117.4	93.1	98.0	97.8	97.5	115.8		87.0			97.9
May	107.7	112.6	117.4	93.1	96.7	98.6	97.5	104.0		87.0			99.0
June	105.7	112.4	117.4	93.1	94.3	98.3	92.7	94.7		87.0			99.3
July	107.6	115.2	117.4	93.0	94.4	97.3	92.7	96.4		87.0			99.2
August	108.8	115.9	117.4	93.4	93.6	98.0	92.7	101.4		87.8			98.5
September	105.9	110.4	116.1	93.4	94.1	97.7	92.7	102.7		87.8			98.0
October (P)	102.2	103.2	116.1	93.4	92.8	97.6	92.7	104.4		87.2			97.5
<u>Percentage Change (P)</u>													
Oct 2020													
over	-3.5%	-6.6%	0.0%	0.0%	-1.4%	-0.1%	0.0%	1.6%		-0.7%			-0.5%
Sep 2020													
Oct 2020													
over	-10.0%	-13.2%	-1.5%	1.1%	-7.9%	1.3%	-4.9%	-11.6%		1.2%			1.3%
Oct 2019													

Source : Samoa Bureau Statistics

(P) : Provisional figures

Note : n.a. Not applicable

Table 5. IMPORTED ITEMS UNDERLYING INDEX

(Base Period : Average Prices February 2016 = 100)

Group	All Items	Food and Non Alcoholic Beverages	Alcoholic Beverages, Tobacco and Narcotics	Clothing and Footwear	Housing, Water , Electricity, Gas and other Fuels	Furnishings, Household Equipment and Maintenance	Health	Transport	Communication	Recreation and Culture	Education	Restaurants	Miscellaneous goods and services
Weights	401.2	269.1	n.a	15.2	24.2	26.9	2.5	23.0	n.a	5.6	n.a	n.a	34.7
Ave - 2017	106.0	110.1		97.0	93.8	98.9	91.7	104.5		90.0			97.1
Ave - 2018	108.8	113.8		96.1	93.4	97.6	94.3	111.2		92.0			96.6
Ave - 2019	108.9	114.5		93.7	94.6	95.8	97.9	108.1		87.9			96.7
2019													
October	111.8	118.8		92.4	94.8	96.3	97.5	109.2		86.2			96.2
November	111.4	118.1		93.4	94.8	96.9	97.5	109.2		88.7			96.1
December	110.1	116.3		93.4	94.9	96.3	97.5	106.7		88.7			97.2
2020													
January	108.4	113.8		93.4	94.8	96.3	97.5	106.7		88.7			96.9
February	111.3	118.1		93.4	94.6	97.2	97.5	106.7		88.7			96.5
March	113.0	120.7		93.1	94.0	97.3	97.5	106.7		88.7			96.8
April	110.2	116.0		93.1	93.6	97.8	97.5	110.6		87.0			97.9
May	108.1	112.6		93.1	95.0	98.6	97.5	110.4		87.0			99.0
June	108.0	112.4		93.1	95.2	98.3	92.7	110.7		87.0			99.3
July	109.8	115.2		93.0	95.5	97.3	92.7	110.7		87.0			99.2
August	110.1	115.9		93.4	93.0	98.0	92.7	110.2		87.8			98.5
September	106.5	110.4		93.4	93.3	97.7	92.7	112.4		87.8			98.0
October (P)	101.4	103.2		93.4	91.8	97.6	92.7	111.7		87.2			97.5
<u>Percentage Change (P)</u>													
Oct 2020 over Sep 2020	-4.7%	-6.6%		0.0%	-1.6%	-0.1%	0.0%	-0.6%		-0.7%			-0.5%
Oct 2020 over Oct 2019	-9.2%	-13.2%		1.1%	-3.2%	1.3%	-4.9%	2.3%		1.2%			1.3%

Source : Samoa Bureau Statistics

(P) : Provisional figures

Note : n.a. Not applicable

Table 6. LOCAL GOODS COMPONENT OF THE CONSUMER PRICE INDEX
(Base Period : Average Prices February 2016 = 100)

Group	All Items	Food and Non Alcoholic Beverages	Alcoholic Beverages, Tobacco and Narcotics	Clothing and Footwear	Housing, Water, Electricity, Gas and other Fuels	Furnishings, Household Equipment and Maintenance	Health	Transport	Communication	Recreation and Culture	Education	Restaurants	Miscellaneous goods and services
Weights	505.3	134.6	104.6	6.0	91.3	3.9	2.2	59.9	51.5	0.4	19.7	22.4	8.8
Ave - 2017	98.6	95.0	107.1	95.7	90.6	100.1	100.0	101.6	101.2	100.0	97.9	98.3	102.3
Ave - 2018	102.6	105.3	112.0	93.3	88.1	100.3	100.0	101.7	103.3	100.0	110.4	99.0	102.3
Ave - 2019	105.5	107.3	116.5	93.8	93.2	100.3	102.5	102.3	104.2	100.0	113.5	103.3	102.3
2019													
October	106.4	106.1	117.6	92.1	97.3	100.3	103.0	104.5	104.3	100.0	114.9	103.4	102.3
November	106.0	103.6	117.2	92.1	96.7	100.3	103.0	108.1	104.3	100.0	114.9	103.4	102.3
December	105.4	104.1	117.2	93.3	96.7	100.3	103.0	99.7	104.3	100.0	114.9	108.3	102.3
2020													
January	108.0	110.5	120.1	92.9	98.6	100.3	103.0	99.6	104.2	100.0	114.9	108.3	102.3
February	107.3	109.0	119.7	93.7	96.0	100.3	103.0	101.4	104.2	100.0	114.9	108.3	102.3
March	107.3	109.9	119.7	94.4	95.4	100.3	103.0	100.8	104.2	100.0	114.9	108.3	102.3
April	104.3	107.5	119.3	94.4	82.6	100.3	103.0	100.8	104.2	100.0	114.9	108.3	102.3
May	103.9	106.4	119.3	94.4	82.6	100.3	103.0	99.9	104.2	100.0	114.9	108.3	102.3
June	104.1	106.9	119.5	94.4	82.6	100.3	103.0	99.9	104.2	100.0	114.9	108.3	102.3
July	105.0	108.8	121.6	94.4	82.6	100.3	103.0	99.9	104.2	100.0	114.9	108.3	102.3
August	105.2	109.2	121.8	94.4	82.6	100.3	103.0	99.9	104.2	100.0	114.9	108.9	102.3
September	105.3	105.9	122.0	94.4	87.1	100.3	103.0	99.9	104.2	100.0	114.9	111.4	102.3
October (P)	105.0	104.8	121.9	94.4	87.1	100.3	103.0	99.9	104.2	100.0	114.9	111.4	102.3
Percentage Change (P)													
Oct 2020 over Sep 2020	-0.3%	-1.1%	-0.1%	0.0%	0.0%	0.0%	0.0%	0.0%	0.0%	0.0%	0.0%	0.0%	0.0%
Oct 2020 over Oct 2019	-1.4%	-1.3%	3.7%	2.5%	-10.5%	0.0%	0.0%	-4.4%	-0.1%	0.0%	0.0%	7.8%	0.0%

Source : Samoa Bureau Statistics

(P) : Provisional figures

Note : n.a. Not applicable

■ : Revised Figure

Table 7. LOCAL ITEMS UNDERLYING INDEX

(Base Period : Average Prices February 2016 = 100)

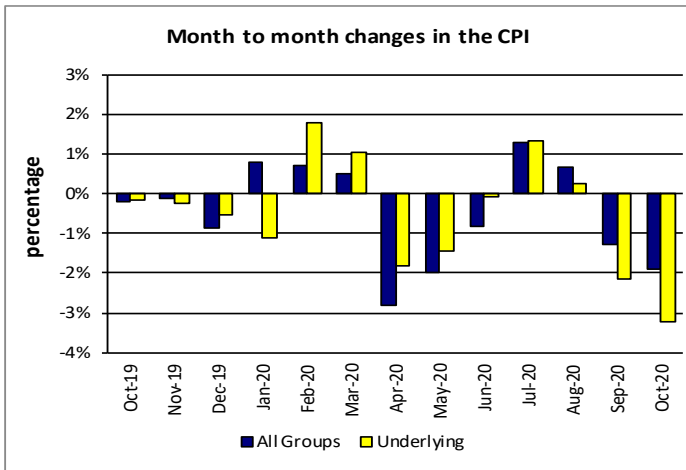
Group	All Items	Food and Non Alcoholic Beverages	Alcoholic Beverages, Tobacco and Narcotics	Clothing and Footwear	Housing, Water , Electricity, Gas and other Fuels	Furnishings, Household Equipment and Maintenance	Health	Transport	Communication	Recreation and Culture	Education	Restaurants	Miscellaneous goods and services
Weights	185.5	76.1	n.a	6.0	n.a	3.9	1.0	3.4	51.5	n.a	12.3	22.4	8.8
Ave - 2017	99.9	100.1		95.7		100.1	100.0	101.8	101.2		96.7	98.3	102.3
Ave - 2018	101.9	100.3		93.3		100.3	100.0	108.3	103.3		114.0	99.0	102.3
Ave - 2019	103.6	101.6		93.8		100.3	105.2	108.6	104.2		118.5	103.3	102.3
2019													
October	103.8	102.0		92.1		100.3	106.3	108.6	104.3		120.6	103.4	102.3
November	103.9	102.1		92.1		100.3	106.3	108.6	104.3		120.6	103.4	102.3
December	104.7	102.5		93.3		100.3	106.3	108.6	104.3		120.6	108.3	102.3
2020													
January	104.6	102.5		92.9		100.3	106.3	108.6	104.2		120.6	108.3	102.3
February	104.5	102.0		93.7		100.3	106.3	108.6	104.2		120.6	108.3	102.3
March	104.4	101.7		94.4		100.3	106.3	108.6	104.2		120.6	108.3	102.3
April	104.2	101.3		94.4		100.3	106.3	108.6	104.2		120.6	108.3	102.3
May	103.8	100.4		94.4		100.3	106.3	108.6	104.2		120.6	108.3	102.3
June	103.9	100.5		94.4		100.3	106.3	108.6	104.2		120.6	108.3	102.3
July	104.3	101.7		94.4		100.3	106.3	108.6	104.2		120.6	108.3	102.3
August	104.6	102.1		94.4		100.3	106.3	108.6	104.2		120.6	108.9	102.3
September	105.0	102.4		94.4		100.3	106.3	108.6	104.2		120.6	111.4	102.3
October (P)	105.2	102.7		94.4		100.3	106.3	108.6	104.2		120.6	111.4	102.3
<u>Percentage Change (P)</u>													
Oct 2020													
over	0.1%	0.3%		0.0%		0.0%	0.0%	0.0%	0.0%		0.0%	0.0%	0.0%
Sep 2020													
Oct 2020													
over	1.3%	0.7%		2.5%		0.0%	0.0%	0.0%	-0.1%		0.0%	7.8%	0.0%
Oct 2019													

Source : Samoa Bureau Statistics

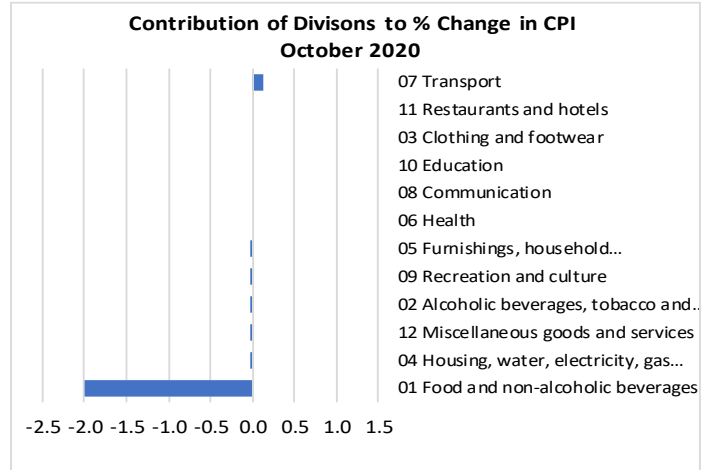
(P) : Provisional figures

Note : n.a. Not applicable

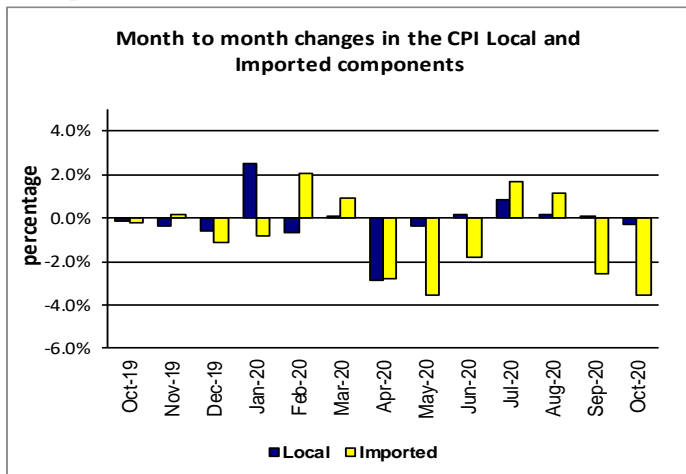
Graph.5



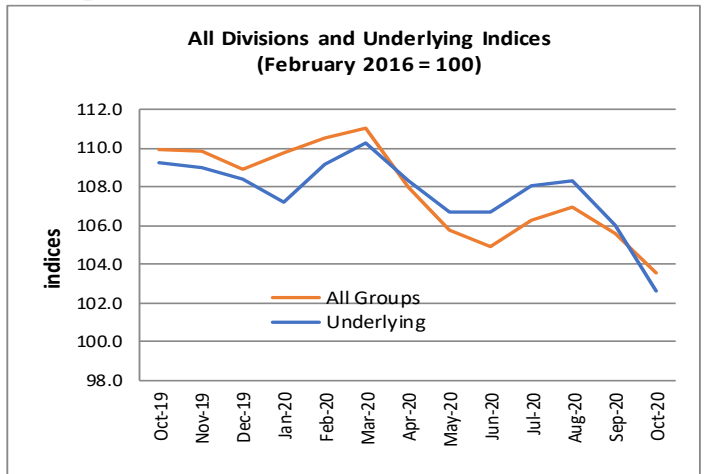
Graph.6



Graph.7



Graph.8



Graph.9

