



MALO O SAMOA

OFISA O FUIAINUMERA FAAMAUINA

FUAFATATAU O TAU O OLOA MA AUAUNAGA NOVEMA 2020

Faamatalaga Autu :

Fuafaatatau o Tau o Oloa ma Auaunaga mo le masina o Novema 2020 ua fa'aitiitia i le 0.4 pasene pe a faatusa atu i le masina ua mavae.

- O le Vaega o Meaai ma Vaiinu ua fa'aitiitia i le 0.9 pasene
- Vaega o le Soifua Maloloina ua si'itia i le 1.9 pasene
- O le televave o le siitiaga o tau o Oloa ma Auaunaga na faaiuina ia Novema 2020 ua paū i le 0.9 pasene

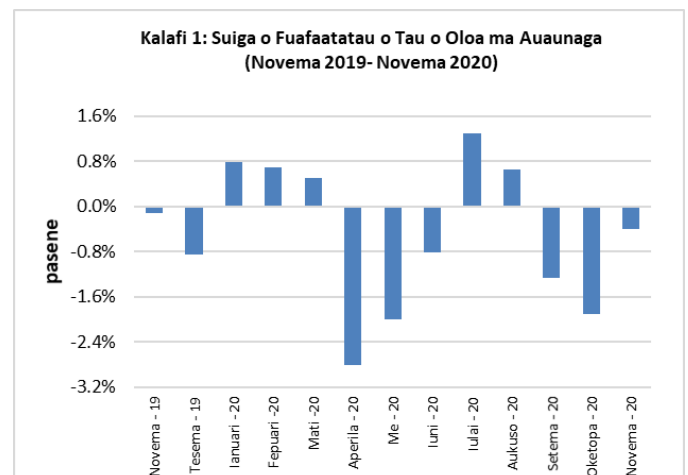
O Novema 2020 faatusa ia Novema 2019, na paū i le 6.0 pasene

Aotelega

O le Fuafaatatau o Tau o Oloa ma Auaunaga (FTOA) mo le masina o Novema 2020 e 0.4 pasene ua faaititia ai na i lo'o Oketopa 2020 ma e 6.0 pasene ua paū ai na i lo'o Novema 2019.

O le paū o le vaega o Oloa gaosi i totonu o le atunuu e 1.0 pasene, e atagia mai i le fa'aitiitia o tau o meaai gaosi i totonu o le atunuu, o le sao foi lea i le paū e 0.4 pasene i le aotelega o oloa i le Fuafaatatau O Tau o Oloa ma Auaunaga (FTOA)

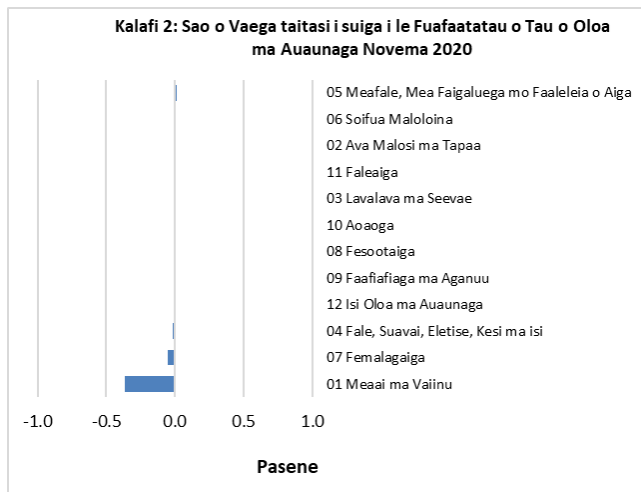
O Oloa auina mai fafo na faamauina le si'itia i le 0.3 pasene mai le masina ua mavae. Kalafi 1 o lo'o faaalua ai suiga o pasene o le Fuafaatatau o Tau o Oloa ma Auaunaga mai masina taitasi. (Novema 2019 ia Novema 2020).



Faamaumauga : Ofisa Fuainumera Faamauina

O Sao o Vaega Taitasi

O lo'o fa'aailoa mai i le kalafi 2, vaega o Meaai ma Vaiinu na telē lona sao e 0.36 pasene i le paū, ma o le vaega foi lea na uunaia le fa'aitiitia e 0.4 pasene i le Fuafaatatau o Tau o Oloa ma Auaunaga (FTOA).



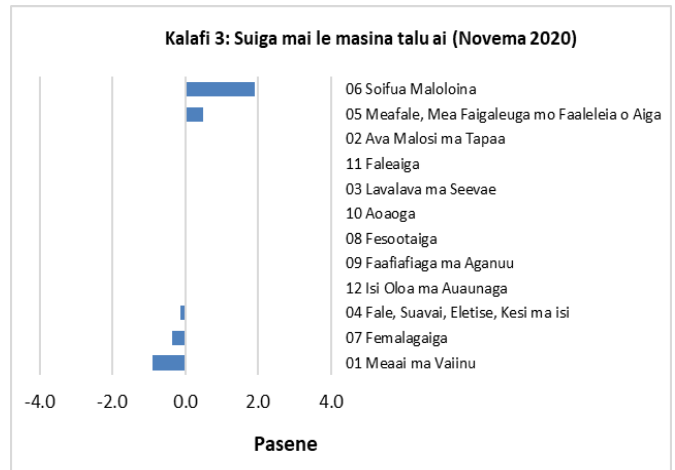
Faamauga : Ofisa Fuainumera Faamauina

Fuafaatatau o Tau o Oloa ma Auaunaga (suiga o pasene)

E 0.4 pasene na fa'aitiitia ai le aotelega, e mafua ona o le paū e 0.9 pasene i le Vaega o Meaai ma Vaiinu. O le vaega o Femalagaiga ma Fale, Vai, Eletise, kesi ma Isi na faamauina ai foi fa'aitiitiaga e 0.4 ma le 0.1 pasene.

I le isi itu, na faamauina siitiaga i vaega o Soifua Maloloina e 1.9 pasene faapea Meafale ma mea faigaluega mo le faaleleia o aiga e 0.5 pasene.

E leai ni suiga na faamauina mo vaega o Ava malosi ma Tapaa, Lavalava ma seevae, Fesootaiga, Faafiatiaga ma aganuu, Faleaiga ma Isi oloa ma auaunaga. O loo faaalua mai i le Kalafi 3 le suiga o pasene o vaega taitasi mai ia Oketopa 2020.



Faamauga : Ofisa Fuainumera Faamauina

Oloa Gaosi i Totonu o le Atunuu

O oloa gaosi i totonu o le atunuu i le Fuafaatatau o Tau o Oloa ma Auaunaga (FTOA) na faamauina ai le fa'aitiitia e 1.0 pasene pe a faatusa atu i le masina ua mavae. O le paū na faamauina e mafua mai i le fa'aitiitia o tau mo falaoa, talo, l'a fou (fasi l'a, tau l'a, l'a lapo'a), koko samoa ma afa'i.

Oloa auina mai fafo

O le si'itia o tau na faamauina mo vae moa, apa pisupo ma fualau tui na mafua ai ona si'itia i le 0.3 pasene le vaega o Oloa auina mai fafo.

Meaai ma Vaiinu

O le paū o tau na faamauina mo vae moa, falaoa, talo, l'a fou (fasi l'a, tau l'a, l'a lapo'a), koko samoa, apa pisupo, ma afa'i na atagia i le 0.9 pasene na faaitiitia ai le vaega o Meaai ma Vaiinu.

Femalagaiga

O le paū na faamauina mo suau'u (penisini ma kiso) na mafua ai le fa'aitiitia e 0.4 pasene i le vaega o Femalagaiga.

Soifua maloloina

O le si'itia e 1.9 pasene i le vaega o Soifua maloloina na mafua mai i le si'itia o tau na faamauina mo fualau tui.

Meafale ma Mea Faigaluega mo le faaleleia o Aiga

E 0.5 pasene na si'itia ai le vaega o Meafale ma mea faigaluega mo le faaleleia o aiga, e mafua mai i le siitia o tau na faamauina mo fasimoli faamama lavalava ma faaasunamu.

Fuafaatatau Faavae o Tau o Oloa ma Auaunaga^{1/}

O le Fua Faatatau Faavae o Tau o Oloa ma Auaunaga mo le masina Novema 2020 na faamauina ai le si'itia i le 0.3 pasene pe a faatusa atu ia Oketopa 2020, ae 5.5 pasene ua fa'aitiitia ai pe a faatusa atu ia Novema 2019. O vaega Fuafaatatau faavae o oloa auina mai fafo na faamauina le si'itia i le 0.6 pasene, ao vaega o Oloa gaosi i totonu o le atunuu na faamauina ai foi le si'itia i le 0.1 pasene pe a faatusa i le masina ua tuanai.

Televave o le siitaga o Tau o Oloa ma Auaunaga

O le fa'aitiitia o tau o oloa ma auaunaga i le faaiuga o Novema 2020 e 0.9 pasene ua telegese ai. I le sefululua masina faai'uina ia Novema 2019 o le saosaoa o le siitaga e 0.9 pasene. O lo'o faaalua i le kalafi 4 le aotelega o suiga o le fuafaatatau o tau o oloa ma auaunaga (Novema 2019 – Novema 2020).

Ua faapipi'i atu pusa ma kalafi o loo iai auiliiliga manino mo le silafia.

Faamatalaga :

O le Fuafaatatau o Tau o Oloa ma Auaunaga (CPI) e fuaina ai le televave o le si'itia o tau o oloa ma auaunaga mo Samoa. O loo ua tuufaatasia e fuaina ai suiga i tau o oloa ma auaunaga e faaogaina e aiga i Samoa.

O le isi Ripoti o le Fuafaatatau o Tau o Oloa ma Auaunaga o le a tufatufaina atu i le aso 12 o Ianuari 2021

OFISA O FUAINUMERA

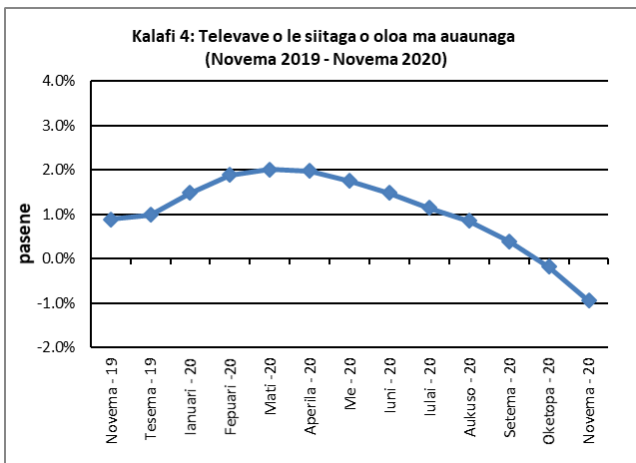
*Vaega o le Tamaoaiga
FMFM II Building, Level 1
P O Box 1151
Apia, Samoa*

Telefoni: (685) 62014/62015

Fax: (685) 24675

Imeli: info.stats@sbs.gov.ws

Upega Tafailagi: www.sbs.gov.ws



Faamaumaga : Ofisa Fuainumera Faamauina

PUSA 1. FUAFaatataU o Tau o Oloa ma AUAUNAGA

(Piriota Faavae : Tuufaatasiga o Tau o Oloa Fepuari 2016 = 100)

Vaega	Tuufaatasiga o Oloa	Mea'ai ma Vaiinu	Ava Malosi ma Tapaa	Lavalava ma Se'evae	Fale, Suavai, Eletise, Kesi ma isi	Meafale, Mea Faigaluega mo Faaleleia o Aiga	Soifua Maloloina	Femalagaiga	Fesootaiga	Faafiagiaga ma Aganuu	Aoauga	Faleaiga	Isi Oloa ma AuauNaga
Mamafa	1000.0	403.7	128.4	21.2	119.6	30.8	4.6	148.5	51.5	6.1	19.7	22.4	43.5
Ave - 2017	102.9	105.0	107.6	96.6	92.2	99.1	95.6	107.3	101.2	90.7	97.9	98.3	98.1
Ave - 2018	107.2	111.0	112.3	95.3	91.0	98.0	97.0	115.0	103.3	92.6	110.4	99.0	97.8
Ave - 2019	108.3	112.1	116.8	93.8	95.0	96.4	100.0	111.3	104.2	88.7	113.5	103.3	97.8
2019													
Novema	109.8	113.2	117.5	93.0	97.8	97.3	100.1	115.5	104.3	89.5	114.9	103.4	97.4
Tesema	108.9	112.3	117.3	93.4	97.7	96.8	100.1	111.1	104.3	89.5	114.9	108.3	98.2
2020													
Ianuari	109.7	112.7	119.7	93.3	99.1	96.8	100.1	112.6	104.2	89.5	114.9	108.3	98.0
Fepuari	110.5	115.1	119.3	93.5	97.3	97.6	100.1	113.0	104.2	89.5	114.9	108.3	97.7
Mati	111.0	117.1	119.3	93.5	96.6	97.7	100.1	111.8	104.2	89.5	114.9	108.3	97.9
Aperila	107.9	113.2	118.9	93.5	86.3	98.1	100.1	109.8	104.2	88.0	114.9	108.3	98.8
Me	105.8	110.5	118.9	93.5	86.0	98.8	100.1	102.3	104.2	88.0	114.9	108.3	99.7
Iuni	104.9	110.6	119.1	93.5	85.4	98.5	97.6	96.8	104.2	88.0	114.9	108.3	99.9
Iulai	106.3	113.1	120.8	93.4	85.4	97.7	97.6	97.8	104.2	88.0	114.9	108.3	99.8
Aukuso	107.0	113.7	121.0	93.7	85.2	98.3	97.6	100.8	104.2	88.6	114.9	108.9	99.3
Setema	105.6	108.9	120.9	93.7	88.7	98.0	97.6	101.6	104.2	88.6	114.9	111.4	98.9
Oketopa	103.6	103.7	120.9	93.7	88.4	98.0	97.6	102.6	104.2	88.1	114.9	111.4	98.5
Novema (P)	103.2	102.8	120.9	93.7	88.3	98.5	99.4	102.2	104.2	88.1	114.9	111.4	98.5
<u>Suiqa o Pasene (P)</u>													
Novema 2020													
mai ia	-0.4%	-0.9%	0.0%	0.0%	-0.1%	0.5%	1.9%	-0.4%	0.0%	0.0%	0.0%	0.0%	0.0%
Oketopa 2020													
Novema 2020													
mai ia	-6.0%	-9.3%	2.9%	0.7%	-9.6%	1.2%	-0.7%	-11.5%	-0.1%	-1.6%	0.0%	7.8%	1.1%
Novema 2019													

Faamatalaga : Ofisa o Fuainumera Faamauiina

(P) : Fuainumera le tumau

Note : n.a. Le faaaogaina

PUSA 2. FUFAATATAU FAAVAE O TAU O OLOA MA AUAUNAGA
(Piriota Faavae : Tuufaatasiga o Tau o Oloa Fepuari 2016 = 100)

Vaega	Tuufaatasiga o Oloa	Mea'ai ma Vairu	Ava Malosi ma Tapaa	Lavalava ma Se'evae	Fale, Suavai, Eletise, Kesi ma isi	Meafale, Mea Faigaluega mo Faaleleia o Aiga	Soifua Maloloina	Femalagaiga	Fesootaiga	Faafiatiaga ma Aganuu	Aoaoga	Faleaiga	Isi Oloa ma Auaunaga
Mamafa	586.7	345.3	n.a	21.2	24.2	30.8	3.5	26.4	51.5	5.6	12.3	22.4	43.5
Ave - 2017	104.0	107.8		96.6	93.8	99.1	94.2	104.2	101.2	90.0	96.7	98.3	98.1
Ave - 2018	106.6	110.8		95.3	93.4	98.0	96.0	110.8	103.3	92.0	114.0	99.0	97.8
Ave - 2019	107.2	111.6		93.8	94.6	96.4	100.1	108.1	104.2	87.9	118.5	103.3	97.8
2019													
Novema	109.0	114.5	0.0	93.0	94.8	97.3	100.1	109.1	104.3	88.7	120.6	103.4	97.4
Tesema	108.4	113.3	0.0	93.4	94.9	96.8	100.1	106.9	104.3	88.7	120.6	108.3	98.2
2020													
Ianuari	107.2	111.3	0.0	93.3	94.8	96.8	100.1	106.9	104.2	88.7	120.6	108.3	98.0
Fepuari	109.1	114.5	0.0	93.5	94.6	97.6	100.1	106.9	104.2	88.7	120.6	108.3	97.7
Mati	110.3	116.5	0.0	93.5	94.0	97.7	100.1	106.9	104.2	88.7	120.6	108.3	97.9
Aperila	108.3	112.8	0.0	93.5	93.6	98.1	100.1	110.3	104.2	87.0	120.6	108.3	98.8
Me	106.7	109.9	0.0	93.5	95.0	98.8	100.1	110.2	104.2	87.0	120.6	108.3	99.7
Iuni	106.7	109.8	0.0	93.5	95.2	98.5	96.8	110.4	104.2	87.0	120.6	108.3	99.9
Iulai	108.1	112.2	0.0	93.4	95.5	97.7	96.8	110.4	104.2	87.0	120.6	108.3	99.8
Aukuso	108.3	112.8	0.0	93.7	93.0	98.3	96.8	110.0	104.2	87.8	120.6	108.9	99.3
Setema	106.0	108.6	0.0	93.7	93.3	98.0	96.8	111.9	104.2	87.8	120.6	111.4	98.9
Oketopa	102.6	103.1	0.0	93.7	91.8	98.0	96.8	111.3	104.2	87.2	120.6	111.4	98.5
Novema (P)	103.0	103.4	0.0	93.7	91.9	98.5	99.2	113.2	104.2	87.2	120.6	111.4	98.5
<u>Suiqa o Pasene (P)</u>													
Novema 2020													
mai ia	0.3%	0.4%		0.0%	0.2%	0.5%	2.6%	1.7%	0.0%	0.0%	0.0%	0.0%	0.0%
Oketopa 2020													
Novema 2020													
mai ia	-5.5%	-9.7%		0.7%	-3.0%	1.2%	-0.9%	3.8%	-0.1%	-1.7%	0.0%	7.8%	1.1%
Novema 2019													

Faamatalaga : Ofisa o Fuainumera Faamauiina

(P) : Fuainumera le tumau

Note : n.a. Le faaogaina

PUSA 3. TAU O OLOA FILIFILIA

Oloa	Mamafa	Iunite	2019			2020		
			Setema	Oketopa	Novema	Setema	Oketopa	Novema (P)
01 Mea'ai ma Vaiinu								
Vaemoa	62.2	kg	5.01	4.97	4.88	3.80	3.10	3.16
Suka enaena	21.3	kg	2.48	2.45	2.42	2.69	2.48	2.49
Papa Falaoa vela	17.2	Papa	1.72	1.69	1.67	1.67	1.67	1.64
Apa pisupo (a)	15.9	12 oz	8.03	8.03	8.03	8.20	8.20	8.20
Talo	15.2	kg	2.86	2.47	2.56	2.87	2.65	2.21
Ariaisa fua	13.4	kg	3.01	2.93	2.94	2.83	2.72	2.60
Pepa araisa	13.4	907g	3.10	3.03	2.97	2.85	2.85	2.85
Apa eleni suauu le va o le \$3.00 ma le \$3.99	12.7	15 oz	3.27	3.37	3.37	3.46	3.34	3.37
Bongo	10.2	20grms	0.80	0.80	0.80	0.85	0.83	0.83
Keke Saina Masi (a)	9.2	pkt 10	6.27	6.18	6.27	6.17	6.17	6.17
Aisakulimi (Tip Top) (a)	9.2	2 ltr	15.33	15.18	15.18	15.33	15.33	15.33
Saimini Maggie	9.0	85gms	1.08	1.07	1.09	1.09	1.09	1.03
Ia Fou (Fasi Ia)	7.9	kg	17.31	20.39	17.27	21.95	21.49	20.31
Pata Anchor	7.7	454g	15.49	15.77	15.77	15.44	15.44	15.44
Panikeke lapotopoto (a)	7.5	sml	0.15	0.15	0.15	0.15	0.15	0.15
Mamoe	6.6	kg	22.62	22.11	21.50	24.74	24.33	24.26
Apa eleni suauu \$4.00 pe sili atu	6.4	15 oz	4.84	4.87	4.89	5.11	5.20	4.98
Apa eleni suauu \$3.00 poo lalo ifo	6.4	15 oz	2.58	2.60	2.62	2.82	2.82	2.82
Tauau pipi	6.3	kg	6.30	7.21	8.20	7.76	7.46	7.48
Ia fou (tauia)	6.0	kg	12.54	10.96	10.81	9.94	11.18	9.87
Ia fou (lapoa)	6.0	kg	19.81	19.57	15.61	17.75	18.11	16.43
02 Ava Malosi ma Tapaa								
Fagu Pia Laitiiti	37.9	355 mls	3.58	3.60	3.58	3.63	3.63	3.63
Pepa sikareti (Pall Mall Filter)	24.3	20 rolls	13.80	13.80	13.80	14.60	14.60	14.60
Pepa sikareti (Pall Mall Menthol)	24.3	20 rolls	13.80	13.80	13.80	14.60	14.60	14.60
Fagu Pia Laitiiti	16.3	330 mls	3.36	3.36	3.38	3.48	3.48	3.48
Sikareti taai (Tobacco) (a)	12.6	packet	15.00	15.00	15.00	15.00	15.00	15.00
03 Lavalava ma Seevae								
Ie Faitaga togina aoga	4.3	size 8-10	29.67	29.67	29.67	29.67	29.67	29.67
Pa'ave toniga aoga (a)	3.7	size 7	32.00	31.00	32.00	31.00	31.00	31.00
04 Fale, Suavai, Eletise, Kesi ma isi								
Eletise paoa totoi muamua	50.6	kw h	0.67	0.67	0.66	0.58	0.58	0.58
Vaiinu faamama	28.5	15-40 m3	1.67	1.67	1.67	1.47	1.47	1.47
Kesi	15.8	9kg	62.00	62.00	62.00	59.25	59.25	59.25
Fale mautotogi a le malo	12.2	2 b/room	650.00	650.00	650.00	650.00	650.00	650.00

05 Meafale, Mea Faigaluega mo Faaleleia o Aiga

Pauta faamama lavalava (a)	6.3	200g	1.90	1.84	1.86	1.88	1.88	1.88
Fasimoli faamama lavalava (samasama)	5.9	bar	2.76	2.76	2.85	2.72	2.71	2.73
Mea tulinamu	4.4	10 coil	1.20	1.20	1.20	1.30	1.30	1.33

06 Soifua Maloloina

Fualaaui tui (Amoxicillin) (a)	2.5	500 mg	7.58	7.58	7.58	7.00	7.00	7.17
Totogi pe a taofia falemai	1.1	night	22.50	22.50	22.50	22.50	22.50	22.50

07 Femalagaiga

Penisini	60.8	1 ltr	2.64	2.62	2.69	2.15	2.21	2.18
Pasese o Taavale laiti (Falemeli I Falemai)	8.2	per trip	4.80	4.80	4.80	4.80	4.80	4.80
Pasese o Taavale laiti (Falemeli I Malua)	8.2	per trip	31.30	31.30	31.30	31.30	31.30	31.30
Pasese o Taavale laiti (Falemeli I Falefa)	8.2	per trip	43.20	43.20	43.20	43.20	43.20	43.20
Pasese o Vaalele (Fagalii-Pago-Fagalii)	6.8	return trip	395.00	395.00	395.00	395.00	395.00	395.00
Pasese o Vaalele (Apia-Aukilani-Apia)	6.8	1 month	1443.92	1651.54	2093.29	1257.87	1257.87	1257.87

08 Fesootaiga

Tau o le valaaui I le minute (Telefoni feaveai) (a)	10.02	per minute	0.43	0.43	0.43	0.43	0.43	0.43
Initaneti (data bundles per mb Rate) (a)	10.02	per mb	0.25	0.25	0.25	0.25	0.25	0.25
Tau o le valaaui I le minute (Telefoni feaveai) (a)	10.02	per minute	0.44	0.44	0.44	0.44	0.44	0.44
Initaneti (data bundles per mb Rate) (a)	10.02	per mb	0.20	0.20	0.20	0.20	0.20	0.20

09 Faafiafiaga ma Aganuu

Televise (a)	2.30	LCD	827.67	827.67	861.00	852.83	852.83	852.83
Api aoga (w arw ick)	1.44	1B4 64 pag	1.37	1.37	1.47	1.40	1.40	1.40
Laptop (a)	1.33	each	2918.60	2918.60	2918.60	3018.60	2938.60	2938.60

10 Aoaoga

Fees PTA Primary Y Urban Registration fees (a)	7.23	Year 6	82.50	82.50	82.50	82.50	82.50	82.50
Fees PTA Secondary Y Urban Registration fees (a)	5.11	Year 10	58.00	58.00	58.00	58.00	58.00	58.00
Fees Tertiary NUS registration School Fees	3.79	registration	322.00	322.00	322.00	322.00	322.00	322.00
Fees Secondary Y Examination Fees (a)	3.61	Y12-13	25.50	25.50	25.50	25.50	25.50	25.50

11 Faleaiga

Aiga (Fish & Chips)	7.79	1 serve	9.17	9.17	9.17	9.58	9.58	9.58
Aiga (Kale ma le Sapasui)	4.87	1 serve	3.67	3.67	3.67	4.67	4.67	4.67
Aiga (Chicken & Chips) (a)	4.87	1 serve	9.64	9.64	9.64	10.00	10.00	10.00
Aiga (Araisa ma le Moe) (a)	4.87	1 serve	4.83	4.83	4.83	5.00	5.00	5.00

12 Oloa Eeseese ma Auaunaga

Pepa fale-le-taua	8.52	250 sheets	0.99	0.99	0.96	1.05	1.05	1.05
Fagu uu ulu (Hair Gel)	4.59	1124ml	4.40	4.40	4.60	4.47	4.47	4.40
Tuuina o malii I le falemalii (a)	4.41	per day	60.00	60.00	60.00	60.00	60.00	60.00
Pusa malii (a)	4.41	each	1966.67	1966.67	1966.67	1966.67	1966.67	1966.67
Faavaillaauiina o le malii (a)	4.41	1 person	1500.00	1500.00	1500.00	1500.00	1500.00	1500.00
Fasimoli taele (a)	4.38	90g	1.96	1.96	1.96	1.97	1.97	1.97
Diapers (a)	4.19	5kg-10kg	8.99	8.99	8.99	8.33	8.33	8.14

Faamatalaga : Ofisa o Fuainumera Faamauiina

(a) : Oloa fou mai ia Fepuari 2016

(P) : Fuainumera le tumau

Faasilasilaga : O iunite sa faaogaina o pauna (lb) ao lea ua suia nei I kilokalama (kg).

PUSA 4. FUAFATATAU O TAU O OLOA AUINA MAI FAFO

(Piriota Faavae : Tuufaatasiga o Tau o Oloa Fepuari 2016 = 100)

Vaega	Tuufaatasiga o Oloa	Mea'ai ma Vaiinu	Ava Malosi ma Tapaa	Lavalava ma Se'evae	Fale, Suavai, Eletise, Kesi ma isi	Meafale, Mea Faigaluega mo Faaleleia o Aiga	Soifua Maloloina	Femalagaiga	Fesootaiga	Faafiatiaga ma Aganuu	Aoaoga	Faleaiga	Isi Oloa ma Auaua
Mamafa	494.7	269.1	23.8	15.2	28.3	26.9	2.5	88.6	<i>n.a</i>	5.6	<i>n.a</i>	<i>n.a</i>	34.7
Ave - 2017	107.3	110.1	110.0	97.0	97.6	98.9	91.7	111.2		90.0			97.1
Ave - 2018	111.9	113.8	113.5	96.1	100.6	97.6	94.3	124.0		92.0			96.6
Ave - 2019	111.1	114.5	118.3	93.7	100.8	95.8	97.9	117.3		87.9			96.7
2019													
Novema	113.7	118.1	118.7	93.4	101.3	96.9	97.5	120.5		88.7			96.1
Tesema	112.4	116.3	117.8	93.4	101.0	96.3	97.5	118.8		88.7			97.2
2020													
Ianuari	111.5	113.8	117.8	93.4	101.0	96.3	97.5	121.4		88.7			96.9
Fepuari	113.8	118.1	117.8	93.4	101.3	97.2	97.5	120.8		88.7			96.5
Mati	114.8	120.7	117.4	93.1	100.3	97.3	97.5	119.2		88.7			96.8
Aperila	111.6	116.0	117.4	93.1	98.0	97.8	97.5	115.8		87.0			97.9
Me	107.7	112.6	117.4	93.1	96.7	98.6	97.5	104.0		87.0			99.0
Iuni	105.7	112.4	117.4	93.1	94.3	98.3	92.7	94.7		87.0			99.3
Iulai	107.6	115.2	117.4	93.0	94.4	97.3	92.7	96.4		87.0			99.2
Aukuso	108.8	115.9	117.4	93.4	93.6	98.0	92.7	101.4		87.8			98.5
Setema	105.9	110.4	116.1	93.4	94.1	97.7	92.7	102.7		87.8			98.0
Oketopa	102.2	103.2	116.1	93.4	92.8	97.6	92.7	104.4		87.2			97.5
Novema (P)	102.4	103.7	117.1	93.4	92.3	98.2	96.3	103.8		87.2			97.5
<u>Suiqa o Pasene (P)</u>													
Novema 2020													
mai ia	0.3%	0.6%	0.8%	0.0%	-0.6%	0.6%	3.8%	-0.6%		0.0%			0.0%
Oketopa 2020													
Novema 2020													
mai ia	-9.9%	-12.1%	-1.4%	-0.1%	-8.9%	1.3%	-1.3%	-13.9%		-1.7%			1.4%
Novema 2019													
Faamatalaga : Ofisa o Fuainumera faamauiina													
(P) : Fuainumera le tumau													
Note : n.a. Le faaaogaina													

PUSA 5. FUAFATATAU FAVAE O TAU O OLOA AUINA MAI FAFO
(Piriota Faavae : Tuufaatasiga o Tau o Oloa Fepuari 2016 = 100)

Vaega	Tuufaatasiga o Oloa	Mea'ai ma Vaiinu	Ava Malosi ma Tapaa	Lavalava ma Se'evae	Fale, Suavai, Eletise, Kesi ma isi	Meafale, Mea Faigaluega mo Faaleleia o Aiga	Soifua Maloloina	Femalagaiga	Fesootaiga	Faafiatiaga ma Aganuu	Aoaoga	Faleaiga	Isi Oloa ma Auaunaga
Mamafa	401.2	269.1	n.a	15.2	24.2	26.9	2.5	23.0	n.a	5.6	n.a	n.a	34.7
Ave - 2017	106.0	110.1		97.0	93.8	98.9	91.7	104.5		90.0			97.1
Ave - 2018	108.8	113.8		96.1	93.4	97.6	94.3	111.2		92.0			96.6
Ave - 2019	108.9	114.5		93.7	94.6	95.8	97.9	108.1		87.9			96.7
2019													
Novema	111.4	118.1		93.4	94.8	96.9	97.5	109.2		88.7			96.1
Tesema	110.1	116.3		93.4	94.9	96.3	97.5	106.7		88.7			97.2
2020	0.0	0.0		0.0	0.0	0.0	0.0	0.0		0.0			0.0
Ianuari	108.4	113.8		93.4	94.8	96.3	97.5	106.7		88.7			96.9
Fepuari	111.3	118.1		93.4	94.6	97.2	97.5	106.7		88.7			96.5
Mati	113.0	120.7		93.1	94.0	97.3	97.5	106.7		88.7			96.8
Aperila	110.2	116.0		93.1	93.6	97.8	97.5	110.6		87.0			97.9
Me	108.1	112.6		93.1	95.0	98.6	97.5	110.4		87.0			99.0
Iuni	108.0	112.4		93.1	95.2	98.3	92.7	110.7		87.0			99.3
Iulai	109.8	115.2		93.0	95.5	97.3	92.7	110.7		87.0			99.2
Aukuso	110.1	115.9		93.4	93.0	98.0	92.7	110.2		87.8			98.5
Setema	106.5	110.4		93.4	93.3	97.7	92.7	112.4		87.8			98.0
Oketopa	101.4	103.2		93.4	91.8	97.6	92.7	111.7		87.2			97.5
Novema (P)	102.0	103.7		93.4	91.9	98.2	96.3	113.9		87.2			97.5
<u>Suiqa o Pasene (P)</u>													
Novema 2020 mai ia	0.6%	0.6%		0.0%	0.2%	0.6%	3.8%	1.9%		0.0%			0.0%
Oketopa 2020													
Novema 2020 mai ia	-8.4%	-12.1%		-0.1%	-3.0%	1.3%	-1.3%	4.3%		-1.7%			1.4%
Novema 2019													

Faamatalaga : Ofisa o Fuainumera faamauiina

(P) : Fuainumera le tumau

Note : n.a. Le faaogaina

PUSA 6. FUAFATATAU O TAU O OLOA MA AUAUNAGA O LOO GAOSI I TOTONU OLE ATUNUU
(Piriota Faavae : Tuufaatasiga o Tau o Oloa Fepuari 2016 = 100)

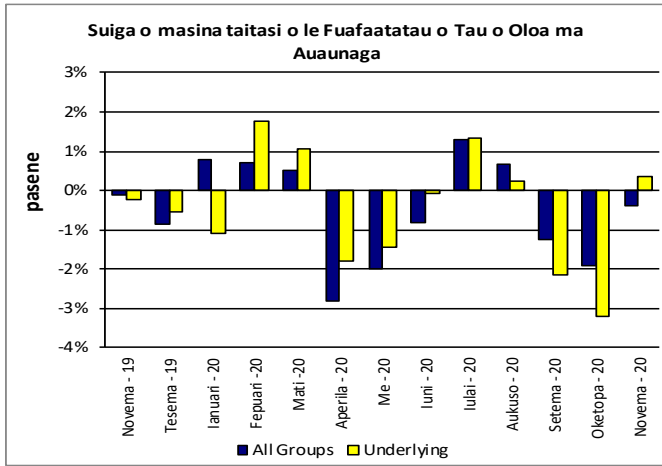
Vaega	Tuufaatasiga o Oloa	Mea'ai ma Vaiinu	Ava Malosi ma Tapaa	Lavalava ma Se'evae	Fale, Suavai, Eletise, Kesi ma isi	Meafale, Mea Faigaluega mo Faaleleia o Aiga	Soifua Maloloina	Femalagaiga	Fesootaiga	Faafiatiaga ma Aganuu	Aoaoga	Faleaiga	Isi Oloa ma Auauunaga
Mamafa	505.3	134.6	104.6	6.0	91.3	3.9	2.2	59.9	51.5	0.4	19.7	22.4	8.8
Ave - 2017	98.5	94.7	107.1	95.7	90.6	100.1	100.0	101.6	101.2	100.0	97.9	98.3	102.3
Ave - 2018	102.6	105.3	112.0	93.3	88.1	100.3	100.0	101.7	103.3	100.0	110.4	99.0	102.3
Ave - 2019	105.5	107.3	116.5	93.8	93.2	100.3	102.5	102.3	104.2	100.0	113.5	103.3	102.3
2019													
Novema	106.0	103.6	117.2	92.1	96.7	100.3	103.0	108.1	104.3	100.0	114.9	103.4	102.3
Tesema	105.4	104.1	117.2	93.3	96.7	100.3	103.0	99.7	104.3	100.0	114.9	108.3	102.3
2020													
Ianuari	108.0	110.5	120.1	92.9	98.6	100.3	103.0	99.6	104.2	100.0	114.9	108.3	102.3
Fepuari	107.3	109.0	119.7	93.7	96.0	100.3	103.0	101.4	104.2	100.0	114.9	108.3	102.3
Mati	107.3	109.9	119.7	94.4	95.4	100.3	103.0	100.8	104.2	100.0	114.9	108.3	102.3
Aperila	104.3	107.5	119.3	94.4	82.6	100.3	103.0	100.8	104.2	100.0	114.9	108.3	102.3
Me	103.9	106.4	119.3	94.4	82.6	100.3	103.0	99.9	104.2	100.0	114.9	108.3	102.3
Iuni	104.1	106.9	119.5	94.4	82.6	100.3	103.0	99.9	104.2	100.0	114.9	108.3	102.3
Iulai	105.0	108.8	121.6	94.4	82.6	100.3	103.0	99.9	104.2	100.0	114.9	108.3	102.3
Aukuso	105.2	109.2	121.8	94.4	82.6	100.3	103.0	99.9	104.2	100.0	114.9	108.9	102.3
Setema	105.3	105.9	122.0	94.4	87.1	100.3	103.0	99.9	104.2	100.0	114.9	111.4	102.3
Oketopa	105.0	104.8	121.9	94.4	87.1	100.3	103.0	99.9	104.2	100.0	114.9	111.4	102.3
Novema (P)	103.9	100.8	121.8	94.4	87.1	100.3	103.0	99.9	104.2	100.0	114.9	111.4	102.3
<u>Suiga o Pasene (P)</u>													
Novema 2020													
mai ia	-1.0%	-3.8%	-0.1%	0.0%	0.0%	0.0%	0.0%	0.0%	0.0%	0.0%	0.0%	0.0%	0.0%
Oketopa 2020													
Novema 2020													
mai ia	-2.0%	-2.7%	3.9%	2.5%	-9.9%	0.0%	0.0%	-7.6%	-0.1%	0.0%	0.0%	7.8%	0.0%
Novema 2019													
<i>Faamatalaga : Ofisa o Fuainumera faamauiina</i>													
<i>(P) : Fuainumera le tumau</i>													
<i>Note : n.a. Le faaaogaina</i>													

PUSA 7. FUAFATATAU FAVAE O TAU O OLOA MA AUAUNAGA O LOO GAOSI I TOTONU OLE ATUNUU

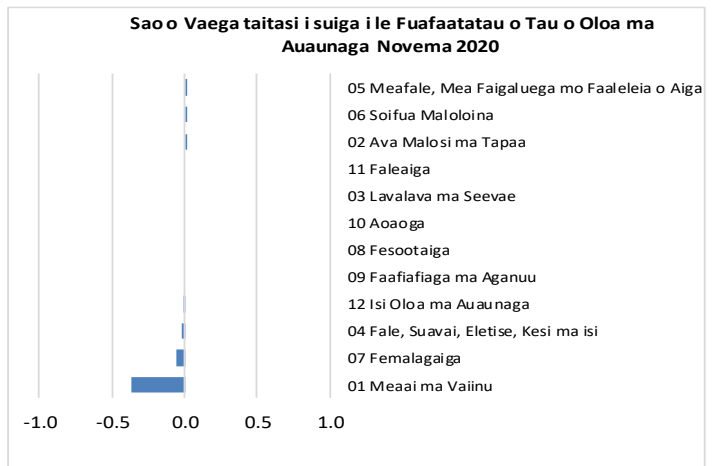
(Piriota Faavae : Tuufaatasiga o Tau o Oloa Fepuari 2016 = 100)

Vaega	Tuufaatasiga o Oloa	Mea'ai ma Vaiinu	Ava Malosi ma Tapaa	Lavalava ma Se'evae	Fale, Suavai, Eletise, Kesi ma isi	Meafale, Mea Faigaluega mo Faaleleia o Aiga	Soifua Maloloina	Femalagaiga	Fesootaiga	Faafiafiaga ma Aganuu	Aoaoga	Faleaiga	Isi Oloa ma Auunaga
Mamafa	185.5	76.1	n.a	6.0	n.a	3.9	1.0	3.4	51.5	n.a	12.3	22.4	8.8
Ave - 2017	99.7	99.6		95.7		100.1	100.0	101.8	101.2		96.7	98.3	102.3
Ave - 2018	101.9	100.3		93.3		100.3	100.0	108.3	103.3		114.0	99.0	102.3
Ave - 2019	103.6	101.6		93.8		100.3	105.2	108.6	104.2		118.5	103.3	102.3
2019													
Novema	103.9	102.1		92.1		100.3	106.3	108.6	104.3		120.6	103.4	102.3
Tesema	104.7	102.5		93.3		100.3	106.3	108.6	104.3		120.6	108.3	102.3
2020													
Ianuari	104.6	102.5		92.9		100.3	106.3	108.6	104.2		120.6	108.3	102.3
Fepuari	104.5	102.0		93.7		100.3	106.3	108.6	104.2		120.6	108.3	102.3
Mati	104.4	101.7		94.4		100.3	106.3	108.6	104.2		120.6	108.3	102.3
Aperila	104.2	101.3		94.4		100.3	106.3	108.6	104.2		120.6	108.3	102.3
Me	103.8	100.4		94.4		100.3	106.3	108.6	104.2		120.6	108.3	102.3
Iuni	103.9	100.5		94.4		100.3	106.3	108.6	104.2		120.6	108.3	102.3
Iulai	104.3	101.7		94.4		100.3	106.3	108.6	104.2		120.6	108.3	102.3
Aukuso	104.6	102.1		94.4		100.3	106.3	108.6	104.2		120.6	108.9	102.3
Setema	105.0	102.4		94.4		100.3	106.3	108.6	104.2		120.6	111.4	102.3
Oketopa	105.2	102.7		94.4		100.3	106.3	108.6	104.2		120.6	111.4	102.3
Novema (P)	105.0	102.4		94.4		100.3	106.3	108.6	104.2		120.6	111.4	102.3
<u>Suiqa o Pasene (P)</u>													
Novema 2020													
mai ia	-0.1%	-0.3%		0.0%		0.0%	0.0%	0.0%	0.0%		0.0%	0.0%	0.0%
Oketopa 2020													
Novema 2020													
mai ia	1.1%	0.3%		2.5%		0.0%	0.0%	0.0%	-0.1%		0.0%	7.8%	0.0%
Novema 2019													
<i>Faamatalaga : Ofisa o Fuainumera faamauiina</i>													
<i>(P) : Fuainumera le tumau</i>													
<i>Note : n.a. Le faaogaina</i>													

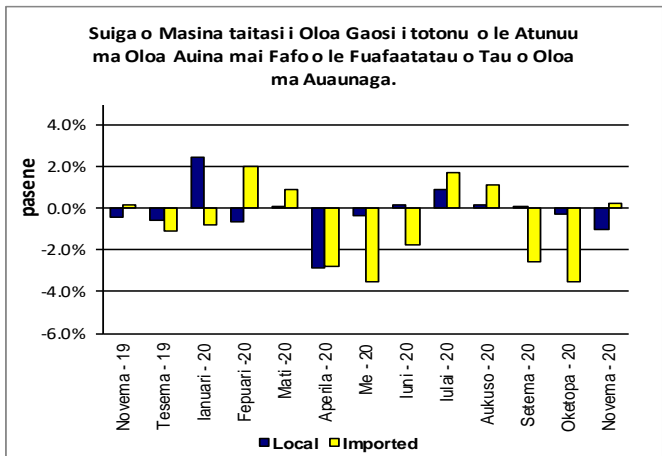
Kalafi.5



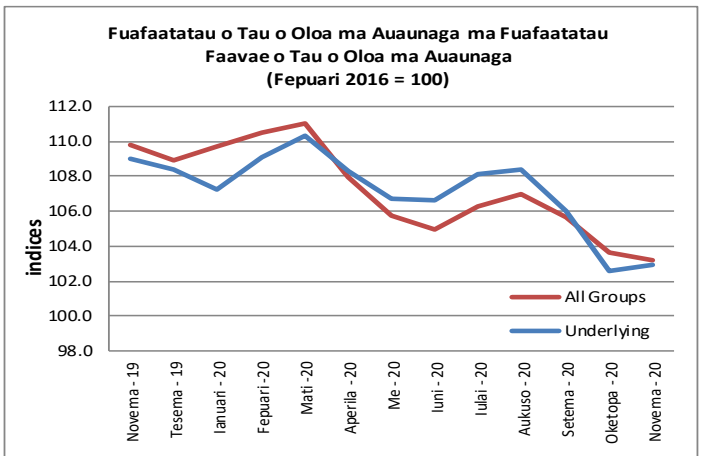
Kalafi.6



Kalafi.7



Kalafi.8



Kalafi.9

