

Please address all correspondence
To Government Statistician
In reply, please quote the file reference



GOVERNMENT OF SAMOA

File Ref: CPI 9/2020

SAMOA BUREAU OF STATISTICS

CONSUMER PRICE INDEX SEPTEMBER 2020

Key findings:

The Consumer Price Index for September 2020 decreased by 1.3 percent compared to the previous month.

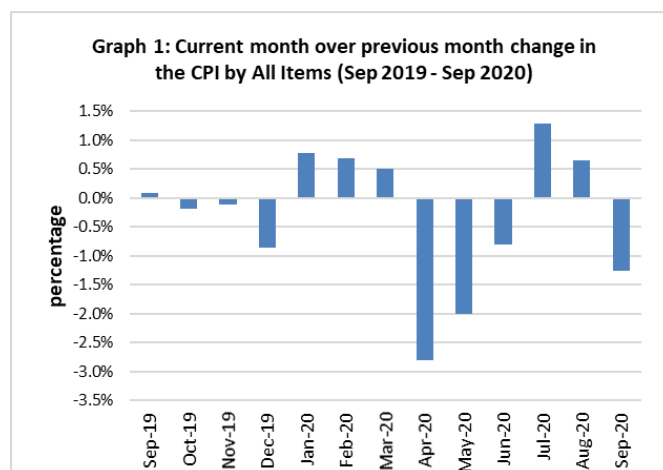
- A change in the tariff structure for electricity influenced triggered a rise in the Consumer Price Index in September 2020 but was offset by a decrease in the Food and Non Alcoholic Beverages index.
- The Food and Non Alcoholic Beverages index decreased by 4.2 percent.
- Housing, Water, Electricity, Gas and other Fuels index increased by 4.1 percent.
- The Average Annual Inflation for the year ended September 2020 was 0.4 percent.

The CPI fell 4.1 percent from September 2019.

SUMMARY

The Consumer Price Index for September 2020 was 1.3 percent lower than in August 2020 and was 4.1 percent lower than September 2019.

The Imported Goods Component registered a decrease of 2.6 percent reflects lower prices for Imported food, spirit (whisky), toilet paper and washing soap which also contributed to the decrease of 1.3 percent in the All Items Consumer Price Index, while Local Component recorded an increase of 0.1 percent from the previous month. Graph 1 shows the month to month percentage changes in the Consumer Price Index by All Divisions from September 2019 to September 2020.

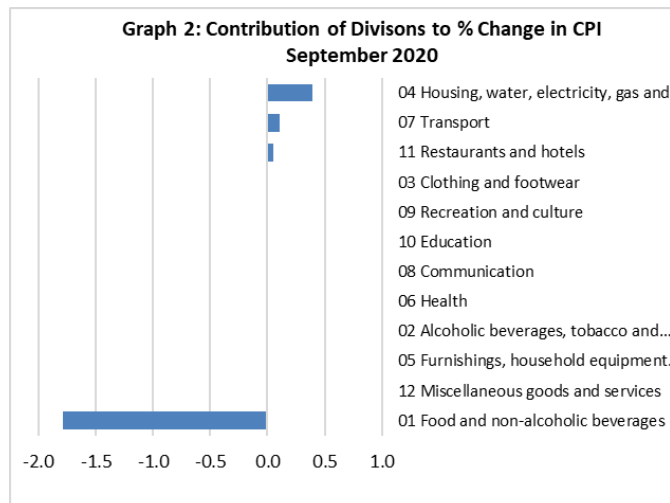


Source : Samoa Bureau of Statistics

Total All Divisions Contribution

As depicted in Graph 2, Food and Non Alcoholic Beverages division, with a negative contribution of 1.79 percent, was the main contributor to the overall decrease of 1.3 percent in the All Division Consumer Price Index.

On the other hand, there were offsetting positive contributions from Housing, Water, Electricity, Gas and other Fuels with 0.39 and Transport division with 0.11 percent increases.



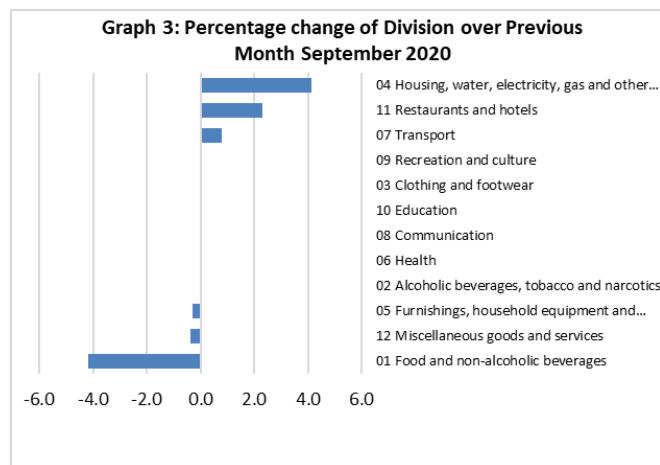
Source : Samoa Bureau of Statistics

Consumer Price Index (% Change)

The 1.3 percent decrease in the Overall Index was mainly due to a decrease of 4.2 percent in the Food and Non Alcoholic Beverages index. The Miscellaneous Goods and Services registered decrease of 0.4 percent, while Furnishing, Household Equipment and Maintenance showed decrease of 0.3 percent.

On the other contrary, increases were registered for Housing, Water, Electricity, Gas and other Fuels index with 4.1 percent, Restaurants index with 2.3 percent and Transport index with 0.8 percent.

No changes were recorded for the Alcoholic Beverages and Tobacco, Clothing and Footwear, Health, Communication, Recreation and Culture and Education indices. Graphically presented in Graph 3 is the September 2020 percentage change for all divisions from August 2020.



Source : Samoa Bureau of Statistics

Imported Goods Component

The Imported Goods Component of the Consumer Price Index registered a decrease of 2.6 percent when compared to the previous month. This decrease was mainly due to lower prices recorded for imported food, spirit (whisky), toilet paper, washing soap and diaper.

Local Goods Component

Increased prices recorded for electricity and restaurant meals have resulted in the 0.1 percent increase in the Local Good Component.

Food and Non Alcoholic Beverages Index

Lower prices recorded for chicken leg quarter, raw sugar, taro, fresh fish (piece, string and large), Chinese cabbage, stewing beef, koko samoa, tomato, taamu and head cabbage is reflected in the 4.2 percent decrease in the Food and Non Alcoholic Beverages index.

Miscellaneous Goods and Services Index

A decrease of 0.4 percent in the Miscellaneous Goods and Services Index was reflection of the lower prices recorded for toilet paper and diaper.

Housing, Water, Electricity, Gas and other Fuels Index

Housing, Water, Electricity, Gas and other Fuel division for September 2020 showed an increase of 4.1 percent compared to the month of August. This increase is partially due to the incorporation of the new electricity tariff structure.

Restaurants Index

Increased prices recorded for restaurant meal is reflected in the 2.3 percent increase in the Restaurants index.

Transport Index

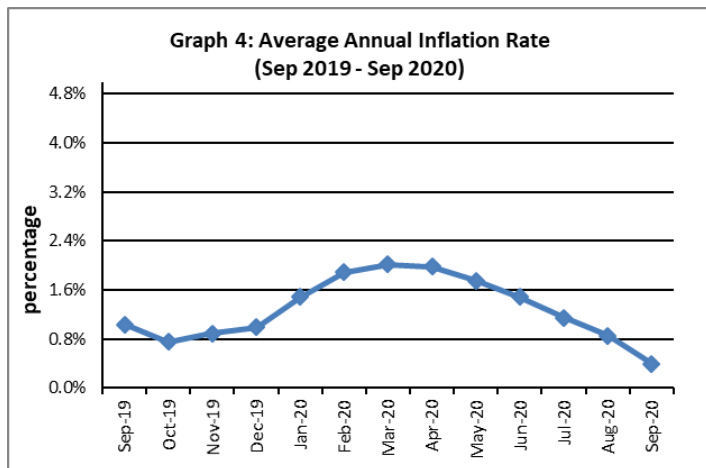
Higher prices recorded for fuel (petrol and diesel) is reflected in the 0.8 percent increase in the Transport Index.

Underlying Indices ^{1/}

The All Items Underlying Index for September 2020 registered a decrease of 2.1 percent when compared to August 2020, and a decrease of 3.1 percent when compared to September 2019. The Imported Items Underlying Index registered a decrease of 3.3 percent, while Local Items Underlying Index recorded an increase of 0.4 percent from the previous month.

Inflation Rate

The average annual inflation rate for the year ended September 2020 was 0.4 percent. For the twelve months ending September 2019 the inflation rate was 1.0 percent. Presented in Graph 4 is the average annual inflation rate (September 2019 - September 2020).



Source : Samoa Bureau of Statistics

The attached Tables and Graphs provide the user with more detailed analysis.

Technical Notes:

The Consumer Price (CPI) measures the rate of inflation for Samoa. It is designed to measure the change in prices for the goods purchased by households in Samoa. The CPI measures the change in prices by comparing the prices for a basket of goods and services

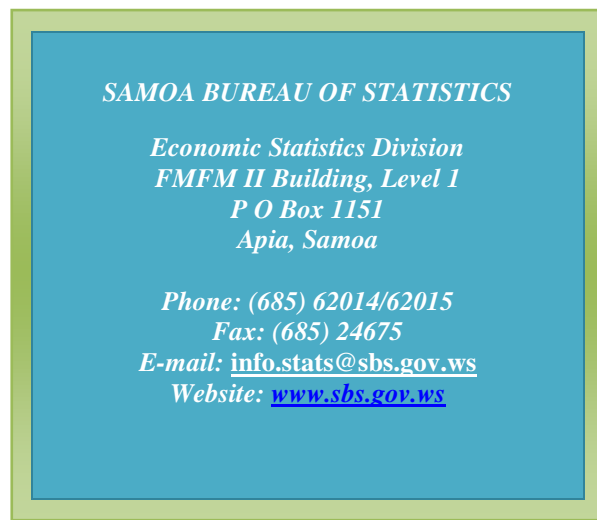
at the collection period with the price for the same goods in a base period.

The basket of goods that is priced is based on the average expenditures of households as recorded in the Household Income and Expenditure Survey (HIES).

The HIES survey identifies how much households spend on different items. The more households spend on an item on average, the more important it is to the price index, and the higher the weight in the index.

^{1/} Monthly movements in the 'headline' CPI series can be volatile. This volatility reflects price changes in particular items that may be due, among other factors, to fluctuations in commodity markets and agricultural conditions, policy changes, or seasonal or infrequent price resetting.

Underlying inflation is a measure of inflation that excludes certain items that face volatile price movements. Underlying inflation eliminates products that can have temporary price shocks because these shocks can diverge from the overall trend of inflation and give a false measure of inflation.



Date of release: 27th October 2020.

The next Consumer Price Index will be released on 10th November 2020.

Papalii Fasavalu Benjamin Sila.
ACTING GOVERNMENT STATISTICIAN/
(ACTING CEO)

Table 1. CONSUMER PRICE INDEX.

(Base Period : Average Prices February 2016 = 100)

Group	All Items	Food and Non Alcoholic Beverages	Alcoholic Beverages, Tobacco and Narcotics	Clothing and Footwear	Housing, Water, Electricity, Gas and other Fuels	Furnishings, Household Equipment, and Maintenance	Health	Transport	Communication	Recreation and Culture	Education	Restaurants	Miscellaneous goods and services
<i>Weights</i>	1000.0	403.7	128.4	21.2	119.6	30.8	4.6	148.5	51.5	6.1	19.7	22.4	43.5
<i>Ave - 2017</i>	102.9	105.1	107.6	96.6	92.2	99.1	95.6	107.3	101.2	90.7	97.9	98.3	98.1
<i>Ave - 2018</i>	107.2	111.0	112.3	95.3	91.0	98.0	97.0	115.0	103.3	92.6	110.4	99.0	97.8
<i>Ave - 2019</i>	108.3	112.1	116.8	93.8	95.0	96.4	100.0	111.3	104.2	88.7	113.5	103.3	97.8
2019													
September	110.1	115.3	117.5	92.1	98.1	97.3	100.1	112.3	104.3	87.1	114.9	103.4	97.5
October	109.9	114.6	117.7	92.3	98.1	96.8	100.1	112.6	104.3	87.1	114.9	103.4	97.5
November	109.8	113.2	117.5	93.0	97.8	97.3	100.1	115.5	104.3	89.5	114.9	103.4	97.4
December	108.9	112.3	117.3	93.4	97.7	96.8	100.1	111.1	104.3	89.5	114.9	108.3	98.2
2020													
January	109.7	112.7	119.7	93.3	99.1	96.8	100.1	112.6	104.2	89.5	114.9	108.3	98.0
February	110.5	115.1	119.3	93.5	97.3	97.6	100.1	113.0	104.2	89.5	114.9	108.3	97.7
March	111.0	117.1	119.3	93.5	96.6	97.7	100.1	111.8	104.2	89.5	114.9	108.3	97.9
April	107.9	113.2	118.9	93.5	86.3	98.1	100.1	109.8	104.2	88.0	114.9	108.3	98.8
May	105.8	110.5	118.9	93.5	86.0	98.8	100.1	102.3	104.2	88.0	114.9	108.3	99.7
June	104.9	110.6	119.1	93.5	85.4	98.5	97.6	96.8	104.2	88.0	114.9	108.3	99.9
July	106.3	113.1	120.8	93.4	85.4	97.7	97.6	97.8	104.2	88.0	114.9	108.3	99.8
August	107.0	113.7	121.0	93.7	85.2	98.3	97.6	100.8	104.2	88.6	114.9	108.9	99.3
September (P)	105.6	108.9	120.9	93.7	88.7	98.0	97.6	101.6	104.2	88.6	114.9	111.4	98.9
<u>Percentage Change (P)</u>													
Sep 2020													
over	-1.3%	-4.2%	0.0%	0.0%	4.1%	-0.3%	0.0%	0.8%	0.0%	0.0%	0.0%	2.3%	-0.4%
Aug 2020													
Sep 2020													
over	-4.1%	-5.5%	2.9%	1.6%	-9.5%	0.8%	-2.5%	-9.5%	-0.1%	1.7%	0.0%	7.8%	1.5%
Sep 2019													

Source : Samoa Bureau Statistics

(P) : Provisional figures

Note : n.a. Not applicable

Table 2. ALL ITEMS UNDERLYING INDEX

(Base Period : Average Prices February 2016 = 100)

Group	All Items	Food and Non Alcoholic Beverages	Alcoholic Beverages, Tobacco and Narcotics	Clothing and Footwear	Housing, Water, Electricity, Gas and other Fuels	Furnishings, Household Equipment, and Maintenance	Health	Transport	Communication	Recreation and Culture	Education	Restaurants	Miscellaneous goods and services
<i>Weights</i>	586.7	345.3	<i>n.a</i>	21.2	24.2	30.8	3.5	26.4	51.5	5.6	12.3	22.4	43.5
<i>Ave - 2017</i>	104.1	107.9		96.6	93.8	99.1	94.2	104.2	101.2	90.0	96.7	98.3	98.1
<i>Ave - 2018</i>	106.6	110.8		95.3	93.4	98.0	96.0	110.8	103.3	92.0	114.0	99.0	97.8
<i>Ave - 2019</i>	107.2	111.6		93.8	94.6	96.4	100.1	108.1	104.2	87.9	118.5	103.3	97.8
2019													
September	109.4	115.4		92.1	94.4	97.3	100.1	109.1	104.3	86.2	120.6	103.4	97.5
October	109.3	115.1		92.3	94.8	96.8	100.1	109.1	104.3	86.2	120.6	103.4	97.5
November	109.0	114.5		93.0	94.8	97.3	100.1	109.1	104.3	88.7	120.6	103.4	97.4
December	108.4	113.3		93.4	94.9	96.8	100.1	106.9	104.3	88.7	120.6	108.3	98.2
2020													
January	107.2	111.3		93.3	94.8	96.8	100.1	106.9	104.2	88.7	120.6	108.3	98.0
February	109.1	114.5		93.5	94.6	97.6	100.1	106.9	104.2	88.7	120.6	108.3	97.7
March	110.3	116.5		93.5	94.0	97.7	100.1	106.9	104.2	88.7	120.6	108.3	97.9
April	108.3	112.8		93.5	93.6	98.1	100.1	110.3	104.2	87.0	120.6	108.3	98.8
May	106.7	109.9		93.5	95.0	98.8	100.1	110.2	104.2	87.0	120.6	108.3	99.7
June	106.7	109.8		93.5	95.2	98.5	96.8	110.4	104.2	87.0	120.6	108.3	99.9
July	108.1	112.2		93.4	95.5	97.7	96.8	110.4	104.2	87.0	120.6	108.3	99.8
August	108.3	112.8		93.7	93.0	98.3	96.8	110.0	104.2	87.8	120.6	108.9	99.3
September (P)	106.0	108.6		93.7	93.3	98.0	96.8	111.9	104.2	87.8	120.6	111.4	98.9
<u>Percentage Change (P)</u>													
Sep 2020													
over	-2.1%	-3.7%		0.0%	0.3%	-0.3%	0.0%	1.7%	0.0%	0.0%	0.0%	2.3%	-0.4%
Aug 2020													
Sep 2020													
over	-3.1%	-5.8%		1.6%	-1.2%	0.8%	-3.3%	2.5%	-0.1%	1.9%	0.0%	7.8%	1.5%
Sep 2019													

Source : Samoa Bureau Statistics

(P) : Provisional figures

Note : n.a. Not applicable

Table 3. AVERAGE RETAIL PRICES OF SELECTED COMMODITIES

Commodities	Wt	Unit	2019			2020		
			July	Aug	Sep	July	Aug	Sep (P)
01 Food and non-alcoholic beverages								
Leg Quarters Chicken	62.2	kg	4.74	4.99	5.01	4.34	4.40	3.80
Raw Sugar	21.3	kg	2.45	2.44	2.48	2.71	2.75	2.69
Bread	17.2	loaf	1.72	1.72	1.72	1.67	1.67	1.67
Corned Beef (a)	15.9	12 oz	7.88	8.05	8.03	8.20	8.20	8.20
Taro	15.2	kg	2.82	3.01	2.86	2.97	3.05	2.87
Re-packed medium grain rice	13.4	kg	2.93	2.82	3.01	2.85	2.85	2.83
Prepacked medium grain rice (a)	13.4	907g	3.25	3.08	3.10	2.73	2.85	2.85
Canned fish between \$3.00 and \$3.99 Natural Oil	12.7	15 oz	3.49	3.44	3.27	3.45	3.44	3.46
Bongo	10.2	20grms	0.80	0.80	0.80	0.82	0.85	0.85
Keke Saina Biscuits (a)	9.2	pkt 10	6.30	6.25	6.27	6.17	6.17	6.17
Tip Top Ice Cream (a)	9.2	2 ltr	15.32	15.32	15.33	15.33	15.17	15.33
Ramen maggie	9.0	85gms	1.08	1.08	1.08	1.09	1.09	1.09
Fish (Piece)	7.9	kg	18.67	21.04	17.31	23.06	24.55	21.95
Butter Anchor	7.7	454g	14.67	15.50	15.49	15.66	15.69	15.44
Round Pancake (a)	7.5	sml	0.15	0.15	0.15	0.15	0.15	0.15
Mutton Flaps	6.6	kg	22.38	22.20	22.62	24.98	24.98	24.74
Canned fish \$4:00 or over N/Oil	6.4	15 oz	4.85	4.85	4.84	5.02	5.03	5.11
Canned fish under \$3.00 in N/Oil	6.4	15 oz	2.52	2.53	2.58	2.80	2.82	2.82
Wings Turkey	6.3	kg	6.27	6.24	6.30	7.24	7.55	7.76
Fish (string)	6.0	kg	12.37	11.39	12.54	9.68	10.57	9.94
Fish (large)	6.0	kg	21.82	20.55	19.81	16.45	18.26	17.75
02 Alcoholic beverages, tobacco and narcotics								
Lager Beer	37.9	355 mls	3.58	3.58	3.58	3.62	3.62	3.63
Pall Mall Filter Cigarettes (Red)	24.3	20 rolls	13.80	13.80	13.80	14.60	14.60	14.60
Pall Mall Menthol Cigarettes (Green)	24.3	20 rolls	13.80	13.80	13.80	14.60	14.60	14.60
Beer (a)	16.3	330 mls	3.40	3.40	3.36	3.45	3.46	3.48
Winfield Tobacco (a)	12.6	packet	15.00	15.00	15.00	15.00	15.00	15.00
03 Clothing and footwear								
Uniform le Faitaga College boys	4.3	size 8-10	29.67	29.67	29.67	29.67	29.67	29.67
Uniform Pa'ave (a)	3.7	size 7	32.00	32.00	32.00	31.00	31.00	31.00
04 Housing, water, electricity, gas and other fuels								
Electricity / Cashpower / kw h 1- 100 / total cost per	50.6	kw h	0.67	0.67	0.67	0.51	0.51	0.58
Reservoir treated Water	28.5	15-40 m3	1.67	1.67	1.67	1.47	1.47	1.47
Liquid gas	15.8	9kg	62.00	62.00	62.00	62.00	59.25	59.25
Government house Rent	12.2	2 b/room	650.00	650.00	650.00	650.00	650.00	650.00

05 Furnishings, household equipment and routine household maintenance

Washing powder (a)	6.3	200g	1.90	1.90	1.90	1.87	1.87	1.88
Soap yellow Washing soap	5.9	bar	2.78	2.75	2.76	2.75	2.80	2.72
Mosquito coil	4.4	10 coil	1.20	1.18	1.20	1.30	1.30	1.30

06 Health

Amoxicillin mg Tablets (a)	2.5	500 mg	7.58	7.58	7.58	7.00	7.00	7.00
Hospital Charge	1.1	night	22.50	22.50	22.50	22.50	22.50	22.50

07 Transport

Petrol	60.8	1 ltr	2.74	2.53	2.64	1.98	2.13	2.15
Taxi Fare PO Motootua Hosp	8.2	per trip	4.80	4.80	4.80	4.80	4.80	4.80
Taxi Fares PO Malua	8.2	per trip	31.30	31.30	31.30	31.30	31.30	31.30
Taxi Fares PO Falefa	8.2	per trip	43.20	43.20	43.20	43.20	43.20	43.20
Air Fares Fagalii Pago Fagalii	6.8	return trip	395.00	395.00	395.00	395.00	395.00	395.00
Air Fares Apia Auckland Apia	6.8	1 month	1221.69	1297.55	1443.92	1257.87	1257.87	1257.87

08 Communication

Calling per minute Rate cell phone (a)	10.02	per minute	0.43	0.43	0.43	0.43	0.43	0.43
Internet data bundles per mb Rate (a)	10.02	per mb	0.25	0.25	0.25	0.25	0.25	0.25
Calling per minute Rate cell phone (a)	10.02	per minute	0.44	0.44	0.44	0.44	0.44	0.44
Internet data bundles per mb Rate (a)	10.02	per mb	0.20	0.20	0.20	0.20	0.20	0.20

09 Recreation and culture

Television (a)	2.30	LCD	827.67	827.67	827.67	852.83	852.83	852.83
Exercise Book w arw ick	1.44	1B4 64 pa	1.37	1.37	1.37	1.40	1.40	1.40
Laptop (a)	1.33	each	2918.60	2918.60	2918.60	2918.60	3018.60	3018.60

10 Education

Fees PTA Primary Y Urban Registration fees (a)	7.23	Year 6	82.50	82.50	82.50	82.50	82.50	82.50
Fees PTA Secondary Y Urban Registration fees (a)	5.11	Year 10	58.00	58.00	58.00	58.00	58.00	58.00
Fees Tertiary NUS registration School Fees	3.79	registratio	322.00	322.00	322.00	322.00	322.00	322.00
Fees Secondary Y Examination Fees (a)	3.61	Y12-13	25.50	25.50	25.50	25.50	25.50	25.50

11 Restaurants and hotels

Fish & Chip Meal	7.79	1 serve	9.17	9.17	9.17	9.17	9.17	9.58
Curry & Chopsuey Meal	4.87	1 serve	3.67	3.67	3.67	4.67	4.67	4.67
Chicken & Chips Meal (a)	4.87	1 serve	9.64	9.64	9.64	9.64	9.93	10.00
Steam rice & chicken Meal (a)	4.87	1 serve	4.83	4.83	4.83	4.83	4.83	5.00

12 Miscellaneous goods and services

Paper Sofan deluxe ply Toilet Paper	8.52	250 sheet:	1.00	1.00	0.99	1.08	1.08	1.05
Hair Gel	4.59	1124ml	4.43	4.43	4.40	4.74	4.47	4.47
Price for Storage of remains (a)	4.41	per day	60.00	60.00	60.00	60.00	60.00	60.00
Basic Casket (a)	4.41	each	1966.67	1966.67	1966.67	1966.67	1966.67	1966.67
Standard Embalming (a)	4.41	1 person	1500.00	1500.00	1500.00	1500.00	1500.00	1500.00
Toilet soap (a)	4.38	90g	1.91	1.96	1.96	1.97	1.95	1.97
Diapers (a)	4.19	5kg-10kg	8.99	8.99	8.99	8.46	8.46	8.33

Source : Samoa Bureau Statistics

(a) : New commodity from February 2016

(P) : Provisional figures

Note : Please note unit of conversion was in pound's (lb's) but been converted into kilograms (kg)

Table 4. IMPORTED GOODS COMPONENT OF THE CONSUMER PRICE INDEX

(Base Period : Average Prices February 2016 = 100)

Group	All Items	Food and Non Alcoholic Beverages	Alcoholic Beverages, Tobacco and Narcotics	Clothing and Footwear	Housing, Water , Electricity, Gas and other Fuels	Furnishings, Household Equipment and Maintenance	Health	Transport	Communication	Recreation and Culture	Education	Restaurants	Miscellaneous goods and services
<i>Weights</i>	494.7	269.1	23.8	15.2	28.3	26.9	2.5	88.6	<i>n.a</i>	5.6	<i>n.a</i>	<i>n.a</i>	34.7
<i>Ave - 2017</i>	107.3	110.1	110.0	97.0	97.6	98.9	91.7	111.2		90.0			97.1
<i>Ave - 2018</i>	111.9	113.8	113.5	96.1	100.6	97.6	94.3	124.0		92.0			96.6
<i>Ave - 2019</i>	111.1	114.5	118.3	93.7	100.8	95.8	97.9	117.3		87.9			96.7
2019													
September	113.8	119.1	118.1	91.3	100.7	96.8	97.5	118.8		86.2			96.2
October	113.5	118.8	117.9	92.4	100.8	96.3	97.5	118.1		86.2			96.2
November	113.7	118.1	118.7	93.4	101.3	96.9	97.5	120.5		88.7			96.1
December	112.4	116.3	117.8	93.4	101.0	96.3	97.5	118.8		88.7			97.2
2020													
January	111.5	113.8	117.8	93.4	101.0	96.3	97.5	121.4		88.7			96.9
February	113.8	118.1	117.8	93.4	101.3	97.2	97.5	120.8		88.7			96.5
March	114.8	120.7	117.4	93.1	100.3	97.3	97.5	119.2		88.7			96.8
April	111.6	116.0	117.4	93.1	98.0	97.8	97.5	115.8		87.0			97.9
May	107.7	112.6	117.4	93.1	96.7	98.6	97.5	104.0		87.0			99.0
June	105.7	112.4	117.4	93.1	94.3	98.3	92.7	94.7		87.0			99.3
July	107.6	115.2	117.4	93.0	94.4	97.3	92.7	96.4		87.0			99.2
August	108.8	115.9	117.4	93.4	93.6	98.0	92.7	101.4		87.8			98.5
September (P)	105.9	110.4	116.1	93.4	94.1	97.7	92.7	102.7		87.8			98.0
<u>Percentage Change (P)</u>													
Sep 2020													
over	-2.6%	-4.7%	-1.1%	0.0%	0.5%	-0.3%	0.0%	1.3%		0.0%			-0.5%
Aug 2020													
Sep 2020													
over	-6.9%	-7.3%	-1.7%	2.2%	-6.5%	0.9%	-4.9%	-13.5%		1.9%			1.9%
Sep 2019													

Source : Samoa Bureau Statistics

(P) : Provisional figures

Note : n.a. Not applicable

Table 5. IMPORTED ITEMS UNDERLYING INDEX

(Base Period : Average Prices February 2016 = 100)

Group	All Items	Food and Non Alcoholic Beverages	Alcoholic Beverages, Tobacco and Narcotics	Clothing and Footwear	Housing, Water , Electricity, Gas and other Fuels	Furnishings, Household Equipment and Maintenance	Health	Transport	Communication	Recreation and Culture	Education	Restaurants	Miscellaneous goods and services
Weights	401.2	269.1	n.a	15.2	24.2	26.9	2.5	23.0	n.a	5.6	n.a	n.a	34.7
Ave - 2017	106.0	110.1		97.0	93.8	98.9	91.7	104.5		90.0			97.1
Ave - 2018	108.8	113.8		96.1	93.4	97.6	94.3	111.2		92.0			96.6
Ave - 2019	108.9	114.5		93.7	94.6	95.8	97.9	108.1		87.9			96.7
2019													
September	111.9	119.1		91.3	94.4	96.8	97.5	109.2		86.2			96.2
October	111.8	118.8		92.4	94.8	96.3	97.5	109.2		86.2			96.2
November	111.4	118.1		93.4	94.8	96.9	97.5	109.2		88.7			96.1
December	110.1	116.3		93.4	94.9	96.3	97.5	106.7		88.7			97.2
2020													
January	108.4	113.8		93.4	94.8	96.3	97.5	106.7		88.7			96.9
February	111.3	118.1		93.4	94.6	97.2	97.5	106.7		88.7			96.5
March	113.0	120.7		93.1	94.0	97.3	97.5	106.7		88.7			96.8
April	110.2	116.0		93.1	93.6	97.8	97.5	110.6		87.0			97.9
May	108.1	112.6		93.1	95.0	98.6	97.5	110.4		87.0			99.0
June	108.0	112.4		93.1	95.2	98.3	92.7	110.7		87.0			99.3
July	109.8	115.2		93.0	95.5	97.3	92.7	110.7		87.0			99.2
August	110.1	115.9		93.4	93.0	98.0	92.7	110.2		87.8			98.5
September (P)	106.5	110.4		93.4	93.3	97.7	92.7	112.4		87.8			98.0
<u>Percentage Change (P)</u>													
Sep 2020 over Aug 2020	-3.3%	-4.7%		0.0%	0.3%	-0.3%	0.0%	2.0%		0.0%			-0.5%
Sep 2020 over Sep 2019	-4.9%	-7.3%		2.2%	-1.2%	0.9%	-4.9%	2.9%		1.9%			1.9%

Source : Samoa Bureau Statistics

(P) : Provisional figures

Note : n.a. Not applicable

Table 6. LOCAL GOODS COMPONENT OF THE CONSUMER PRICE INDEX
(Base Period : Average Prices February 2016 = 100)

Group	All Items	Food and Non Alcoholic Beverages	Alcoholic Beverages, Tobacco and Narcotics	Clothing and Footwear	Housing, Water , Electricity, Gas and other Fuels	Furnishings, Household Equipment and Maintenance	Health	Transport	Communication	Recreation and Culture	Education	Restaurants	Miscellaneous goods and services
Weights	505.3	134.6	104.6	6.0	91.3	3.9	2.2	59.9	51.5	0.4	19.7	22.4	8.8
Ave - 2017	98.6	95.0	107.1	95.7	90.6	100.1	100.0	101.6	101.2	100.0	97.9	98.3	102.3
Ave - 2018	102.6	105.3	112.0	93.3	88.1	100.3	100.0	101.7	103.3	100.0	110.4	99.0	102.3
Ave - 2019	105.5	107.3	116.5	93.8	93.2	100.3	102.5	102.3	104.2	100.0	113.5	103.3	102.3
2019													
September	106.6	107.5	117.3	94.2	97.3	100.3	103.0	102.6	104.3	100.0	114.9	103.4	102.3
October	106.4	106.1	117.6	92.1	97.3	100.3	103.0	104.5	104.3	100.0	114.9	103.4	102.3
November	106.0	103.6	117.2	92.1	96.7	100.3	103.0	108.1	104.3	100.0	114.9	103.4	102.3
December	105.4	104.1	117.2	93.3	96.7	100.3	103.0	99.7	104.3	100.0	114.9	108.3	102.3
2020													
January	108.0	110.5	120.1	92.9	98.6	100.3	103.0	99.6	104.2	100.0	114.9	108.3	102.3
February	107.3	109.0	119.7	93.7	96.0	100.3	103.0	101.4	104.2	100.0	114.9	108.3	102.3
March	107.3	109.9	119.7	94.4	95.4	100.3	103.0	100.8	104.2	100.0	114.9	108.3	102.3
April	104.3	107.5	119.3	94.4	82.6	100.3	103.0	100.8	104.2	100.0	114.9	108.3	102.3
May	103.9	106.4	119.3	94.4	82.6	100.3	103.0	99.9	104.2	100.0	114.9	108.3	102.3
June	104.1	106.9	119.5	94.4	82.6	100.3	103.0	99.9	104.2	100.0	114.9	108.3	102.3
July	105.0	108.8	121.6	94.4	82.6	100.3	103.0	99.9	104.2	100.0	114.9	108.3	102.3
August	105.2	109.2	121.8	94.4	82.6	100.3	103.0	99.9	104.2	100.0	114.9	108.9	102.3
September (P)	105.3	105.9	122.0	94.4	87.1	100.3	103.0	99.9	104.2	100.0	114.9	111.4	102.3
Percentage Change (P)													
Sep 2020													
over	0.1%	-3.0%	0.2%	0.0%	5.4%	0.0%	0.0%	0.0%	0.0%	0.0%	0.0%	2.3%	0.0%
Aug 2020													
Sep 2020													
over	-1.2%	-1.5%	4.0%	0.2%	-10.5%	0.0%	0.0%	-2.7%	-0.1%	0.0%	0.0%	7.8%	0.0%
Sep 2019													

Source : Samoa Bureau Statistics

(P) : Provisional figures

Note : n.a. Not applicable

■ : Revised Figure

Table 7. LOCAL ITEMS UNDERLYING INDEX

(Base Period : Average Prices February 2016 = 100)

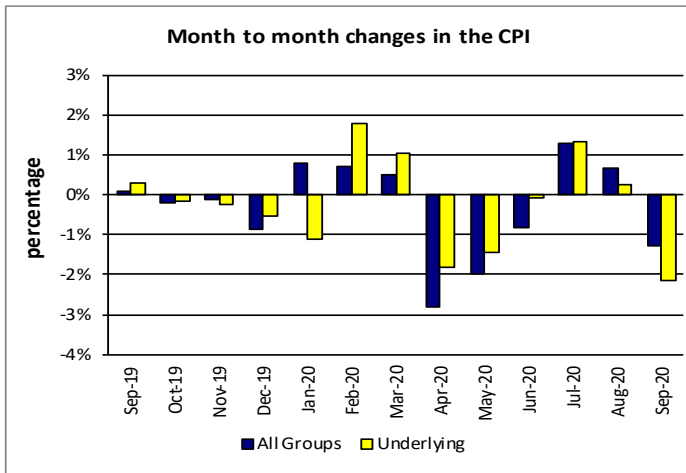
Group	All Items	Food and Non Alcoholic Beverages	Alcoholic Beverages, Tobacco and Narcotics	Clothing and Footwear	Housing, Water , Electricity, Gas and other Fuels	Furnishings, Household Equipment and Maintenance	Health	Transport	Communication	Recreation and Culture	Education	Restaurants	Miscellaneous goods and services
Weights	185.5	76.1	n.a	6.0	n.a	3.9	1.0	3.4	51.5	n.a	12.3	22.4	8.8
Ave - 2017	99.9	100.1		95.7		100.1	100.0	101.8	101.2		96.7	98.3	102.3
Ave - 2018	101.9	100.3		93.3		100.3	100.0	108.3	103.3		114.0	99.0	102.3
Ave - 2019	103.6	101.6		93.8		100.3	105.2	108.6	104.2		118.5	103.3	102.3
2019													
September	104.0	102.1		94.2		100.3	106.3	108.6	104.3		120.6	103.4	102.3
October	103.8	102.0		92.1		100.3	106.3	108.6	104.3		120.6	103.4	102.3
November	103.9	102.1		92.1		100.3	106.3	108.6	104.3		120.6	103.4	102.3
December	104.7	102.5		93.3		100.3	106.3	108.6	104.3		120.6	108.3	102.3
2020													
January	104.6	102.5		92.9		100.3	106.3	108.6	104.2		120.6	108.3	102.3
February	104.5	102.0		93.7		100.3	106.3	108.6	104.2		120.6	108.3	102.3
March	104.4	101.7		94.4		100.3	106.3	108.6	104.2		120.6	108.3	102.3
April	104.2	101.3		94.4		100.3	106.3	108.6	104.2		120.6	108.3	102.3
May	103.8	100.4		94.4		100.3	106.3	108.6	104.2		120.6	108.3	102.3
June	103.9	100.5		94.4		100.3	106.3	108.6	104.2		120.6	108.3	102.3
July	104.3	101.7		94.4		100.3	106.3	108.6	104.2		120.6	108.3	102.3
August	104.6	102.1		94.4		100.3	106.3	108.6	104.2		120.6	108.9	102.3
September (P)	105.0	102.4		94.4		100.3	106.3	108.6	104.2		120.6	111.4	102.3
<u>Percentage Change (P)</u>													
Sep 2020 over Aug 2020	0.4%	0.3%		0.0%		0.0%	0.0%	0.0%	0.0%		0.0%	2.3%	0.0%
Sep 2020 over Sep 2019	1.0%	0.3%		0.2%		0.0%	0.0%	0.0%	-0.1%		0.0%	7.8%	0.0%

Source : Samoa Bureau Statistics

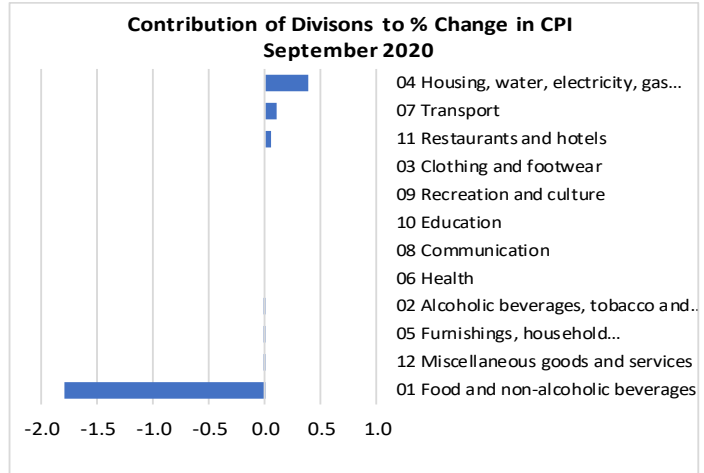
(P) : Provisional figures

Note : n.a. Not applicable

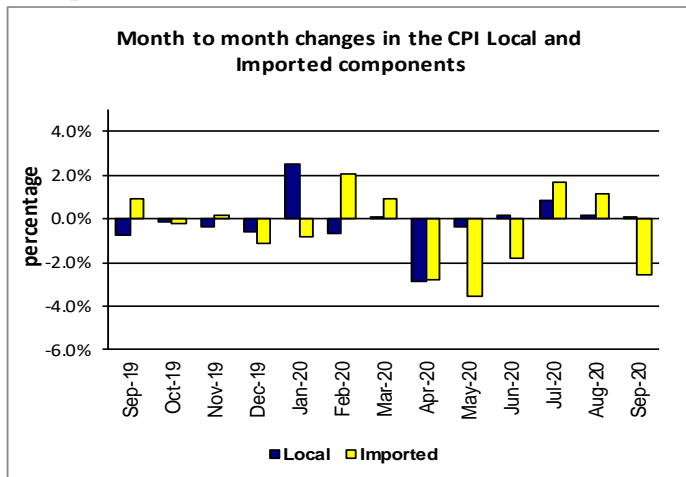
Graph.5



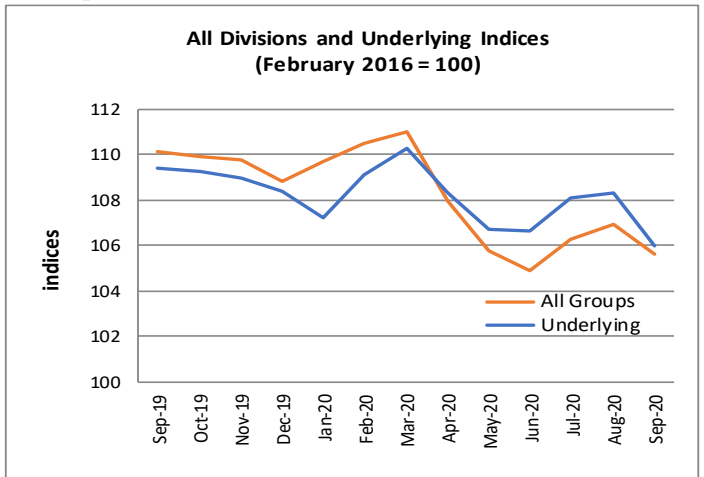
Graph.6



Graph.7



Graph.8



Graph.9

