



MALO O SAMOA

OFISA O FUIAINUMERA FAAMAUINA

FUAFaatataU o Tau o Oloa ma Auaunaga OKetopa 2020

Faamatalaga Autu :

FuafaataU o Tau o Oloa ma Auaunaga mo le masina o Oketopa 2020 ua faaitiitia i le 1.9 pasene pe a faatusa atu i le masina ua mavae.

- O le Vaega o Meaai ma Vaiinu ua fa'aitiitia i le 4.8 pasene, o le masina ua tuana'i e 4.2 pasene na paū ai.
- Vaega o Femalagaiga ua si'itia i le 1.0 pasene.
- O le televave o le si'itiaga o tau o Oloa ma Auaunaga na faaiuina ia Oketopa 2020 ua paū i le 0.2 pasene.

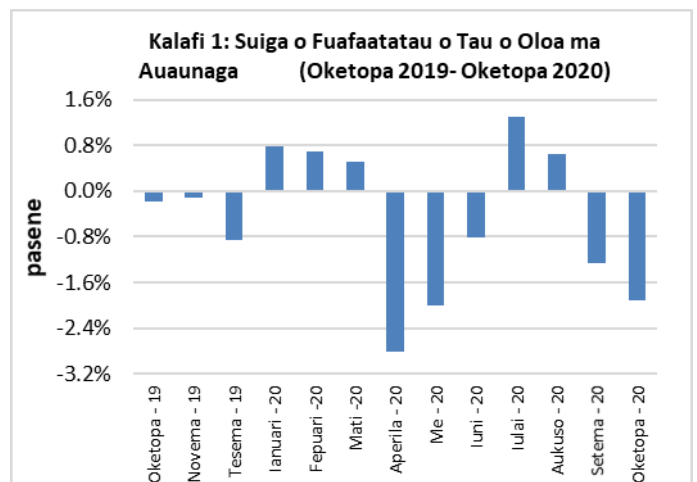
O Oketopa 2020 faatusa ia Oketopa 2019, na fa'aitiitia i le 5.8 pasene.

Aotelega

O le FuafaataU o Tau o Oloa ma Auaunaga (FTOA) mo le masina o Oketopa 2020 e 1.9 pasene ua fa'aitiitia nai i lo'o Setema 2020 ma e 5.8 pasene ua paū ai nai i lo'o Oketopa 2019.

O le paū i le vaega o oloa auina mai fafo e 3.5 pasene mai le masina ua mavae, e mafua ona o le fa'aitiitia o tau o meaai auina mai fafo ma vali fale, o le sao foi lea i le fa'aitiitiga e 1.9 pasene i le aotelega o oloa i le FTOA.

O oloa gaosi i totonu o le atunuu na faamauina le fa'aitiitia e 0.3 pasene mai le masina ua mavae. Kalafi 1 o lo'o faaalai ai suiga o pasene o le FTOA mai masina taitasi. (Oketopa 2019 ia Oketopa 2020).

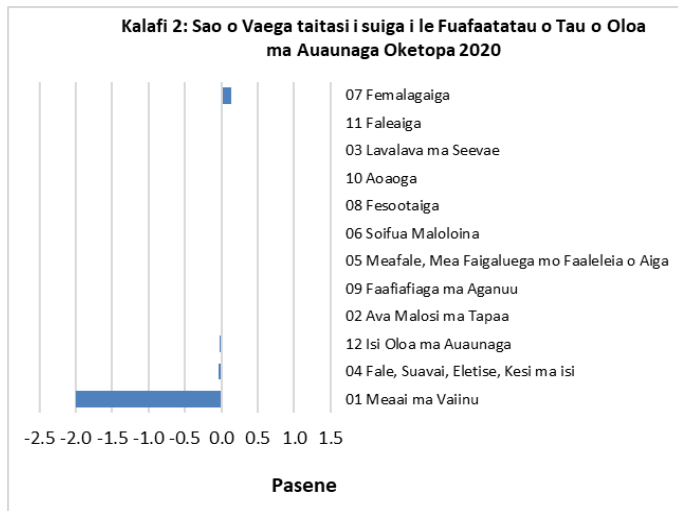


Faamaumauga : Ofisa Fuainumera Faamauina

O Sao o Vaega Taitasi

O loo faaalua i le kalafi 2, vaega o Meaai ma vaiinu na telē lona sao e 1.99 pasene le paū, ma o le vaega foi lea na uunaia le fa'aitiitia e 1.9 pasene i le Fuafaatatau o Tau o Oloa ma Auaunaga (FTOA).

O le vaega o Femalagaiga na faamauina le si'itia lona sao e 0.14 pasene.



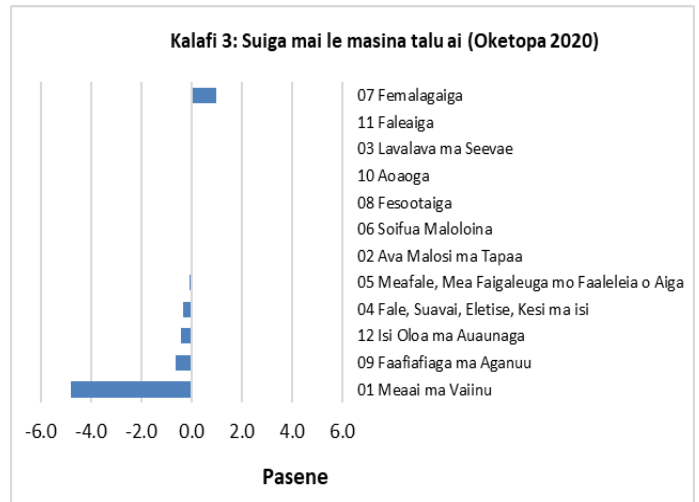
Faamaumauga : Ofisa Fuainumera Faamauina

Fuafaatatau o Tau o Oloa ma Auaunaga (suiga o pasene)

E 1.9 pasene na paū ai le aotelega, na mafua mai ona o le paū e 4.8 pasene i le vaega o Meaai ma Vaiinu. O le vaega o Fa'afiagiaga ma Aganuu na faamauina ai foi le fa'aitiitia i le 0.6 pasene, ao vaega o Isi Oloa ma Auaunaga, Fale, Vai, Eletise, Kesi ma Isi, Meafale ma mea faigaluega mo le faaleleia o Aiga na faamauina ai faaitiitiga e 0.4, 0.3 ma le 0.1 pasene.

I le isi itu, na faamauina le paū i le vaega o Femalagaiga e 1.0 pasene.

E leai ni suiga na faamauina mo vaega o Ava Malosi ma Tapaa, Lavalava ma Seevae, Soifua Maloloina, Fesootaiga, Aoaoga ma Faleaiga. O loo faaalua mai i le Kalafi 3 le suiga o pasene o vaega taitasi pe a faatusa ia Setema 2020.



Faamaumauga : Ofisa Fuainumera Faamauina

Oloa Auina mai Fafu

O oloa auina mai fafo i le Fuafaatatau o Tau o Oloa ma Auaunaga (FTOA) na faamauina ai le paū e 3.5 pasene pe a faatusa atu i le masina ua mavae. O le fa'aitiitia na faamauina e mafua mai i le paū o tau o meaai auina mai fafo, vali fale, masini kamupiuta feaveai (laptop) ma kulimi fulu nifo.

Oloa Gaosi i Totonu o le Atunuu

O le paū o tau na faamauina mo meaai gaosi i totonu o le atunuu na mafua ai le fa'aitiitia e 0.3 pasene i vaega o oloa gaosi i totonu o le atunuu.

Meaai ma Vaiinu

O le fa'aitiitia e 4.8 pasene i le vaega o Meaai ma vaiinu na atagia i le paū o tau na faamauina mo vaemoa, suka enaena, talo, araisa, aufa'i, tamato, popo, taamu ma kapisu lapotopoto.

Faafiagiaga ma Aganuu

O le vaega o Faafiagiaga ma Aganuu na faamauina ai le faaitiitia e 0.6 pasene e mafua mai i le paū o tau na faamauina mo masini kaupiuta feaveai (laptop).

O Isi Oloa ma auaunaga

O le faaitiitia o tau o kulimi fulunifo na atagia i le 0.4 pasene i le vaega o Isi Oloa ma Auaunaga.

Femalagaiga

E 1.0 pasene na si'itia ai le vaega o Femalagaiga e mafua ona o le si'itia o tau na faamauina mo suauu (penisini).

Fuafaatatau Faavae o Tau o Oloa ma Auaunaga^{1/}

O le Fua Faatatau Faavae o Tau o Oloa ma Auaunaga mo le masina Oketopa 2020 na faamauina ai le paū e 3.2 pasene pe a faatusa atu ia Setema 2020, ae 6.1 pasene ua fa'aitiitia ai pe a faatusa atu ia Oketopa 2019. O vaega Fuafaatatau faavae o oloa auina mai fafo na faamauina ai le fa'aitiitia e 4.7 pasene, ae o vaega o oloa gaosi i totonu o le atunuu na faamauina ai si'itaga e 0.1 pasene pe a faatusa i le masina ua tuanai.

Televave o le siitaga o Tau o Oloa ma Auaunaga

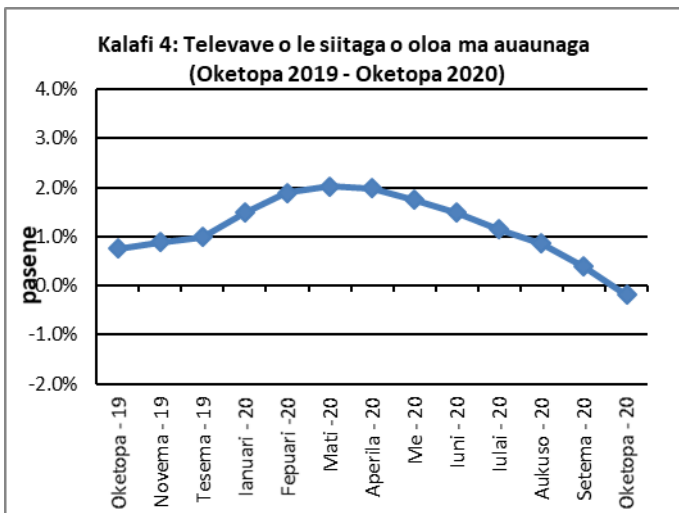
O le si'itia o tau o oloa ma auaunaga i le faaiuga o Oketopa 2020 e 0.2 pasene ua telegese ai. I le sefululua masina faai'uina ia Oketopa 2019 o le saosasoa o le si'itaga e 0.8 pasene. O lo'o faaalua i le kalafi 4 le aotelega o fesuiaga o le fuafaatatau o tau o oloa ma auaunaga (Oketopa 2019 – Oketopa 2020).

Ua faapipi'i atu pusa ma kalafi o loo iai auiliiliga manino mo le silafia.

Faamatalaga :

O le Fuafaatatau o Tau o Oloa ma Auaunaga (CPI) e fuaina ai le televave o le si'itia o tau o oloa ma auaunaga mo Samoa. O loo ua tuu faatasia e fuaina ai suiga i tau o oloa ma auaunaga e faaogaina e aiga i Samoa.

O le isi Ripoti o le Fuafaatatau o Tau o Oloa ma Auaunaga o le a tufatufaina atu i le aso 9 o Tesema 2020.



Faamaumauga : Ofisa Fuainumera Faamauina

OFISA O FUAINUMERA

*Vaega o le Tamaoaiga
FMFM II Building, Level 1
P O Box 1151
Apia, Samoa*

*Telefoni: (685) 62014/62015
Fax: (685) 24675
Imeli: info.stats@sbs.gov.ws
Upega Tafailagi: www.sbs.gov.ws*

PUSA 1. FUAFAATATAU O TAU O OLOA MA AUAUNAGA

(Piriota Faavae : Tuufaatasiga o Tau o Oloa Fepuari 2016 = 100)

Vaega	Tuufaatasiga o Oloa	Mea'ai ma Vaiinu	Ava Malosi ma Tapaa	Lavalava ma Se'evae	Fale, Suavai, Eletise, Kesi ma isi	Meafale, Mea Faigaluega mo Faaleleia o Aiga	Soifua Maloloina	Femalagaiga	Fesootaiga	Faafiatiaga ma Aganuu	Aoauga	Faleaiga	Isi Oloa ma Auaunaga
Mamafa	1000.0	403.7	128.4	21.2	119.6	30.8	4.6	148.5	51.5	6.1	19.7	22.4	43.5
Ave - 2017	102.9	105.0	107.6	96.6	92.2	99.1	95.6	107.3	101.2	90.7	97.9	98.3	98.1
Ave - 2018	107.2	111.0	112.3	95.3	91.0	98.0	97.0	115.0	103.3	92.6	110.4	99.0	97.8
Ave - 2019	108.3	112.1	116.8	93.8	95.0	96.4	100.0	111.3	104.2	88.7	113.5	103.3	97.8
2019													
Oketopa	109.9	114.6	117.7	92.3	98.1	96.8	100.1	112.6	104.3	87.1	114.9	103.4	97.5
Novema	109.8	113.2	117.5	93.0	97.8	97.3	100.1	115.5	104.3	89.5	114.9	103.4	97.4
Tesema	108.9	112.3	117.3	93.4	97.7	96.8	100.1	111.1	104.3	89.5	114.9	108.3	98.2
2020													
Ianuari	109.7	112.7	119.7	93.3	99.1	96.8	100.1	112.6	104.2	89.5	114.9	108.3	98.0
Fepuari	110.5	115.1	119.3	93.5	97.3	97.6	100.1	113.0	104.2	89.5	114.9	108.3	97.7
Mati	111.0	117.1	119.3	93.5	96.6	97.7	100.1	111.8	104.2	89.5	114.9	108.3	97.9
Aperila	107.9	113.2	118.9	93.5	86.3	98.1	100.1	109.8	104.2	88.0	114.9	108.3	98.8
Me	105.8	110.5	118.9	93.5	86.0	98.8	100.1	102.3	104.2	88.0	114.9	108.3	99.7
Iuni	104.9	110.6	119.1	93.5	85.4	98.5	97.6	96.8	104.2	88.0	114.9	108.3	99.9
Iulai	106.3	113.1	120.8	93.4	85.4	97.7	97.6	97.8	104.2	88.0	114.9	108.3	99.8
Aukuso	107.0	113.7	121.0	93.7	85.2	98.3	97.6	100.8	104.2	88.6	114.9	108.9	99.3
Setema	105.6	108.9	120.9	93.7	88.7	98.0	97.6	101.6	104.2	88.6	114.9	111.4	98.9
Oketopa (P)	103.6	103.7	120.9	93.7	88.4	98.0	97.6	102.6	104.2	88.1	114.9	111.4	98.5
<u>Suiga o Pasene (P)</u>													
Oketopa 2020													
mai ia	-1.9%	-4.8%	0.0%	0.0%	-0.3%	-0.1%	0.0%	1.0%	0.0%	-0.6%	0.0%	0.0%	-0.4%
Setema 2020													
Oketopa 2020													
mai ia	-5.8%	-9.5%	2.7%	1.5%	-9.9%	1.2%	-2.5%	-8.9%	-0.1%	1.1%	0.0%	7.8%	1.0%
Oketopa 2019													

Faamatalaga : Ofisa o Fuainumera Faamauiina

(P) : Fuainumera le tumau

Note : n.a. Le faaaogaina

PUSA 2. FUFAATATAU FAAVAE O TAU O OLOA MA AUAUNAGA
(Piriota Faavae : Tuufaatasiga o Tau o Oloa Fepuari 2016 = 100)

Vaega	Tuufaatasiga o Oloa	Mea'ai ma Vaiinu	Ava Malosi ma Tapaa	Lavalava ma Se'evae	Fale, Suavai, Eletise, Kesi ma isi	Meafale, Mea Faigaluega mo Faaleleia o Aiga	Soifua Maloloina	Femalagaiga	Fesootaiga	Faafiatiaga ma Aganuu	Aoaoga	Faleaiga	Isi Oloa ma Auaunaga
Mamafa	586.7	345.3	n.a	21.2	24.2	30.8	3.5	26.4	51.5	5.6	12.3	22.4	43.5
Ave - 2017	104.0	107.8		96.6	93.8	99.1	94.2	104.2	101.2	90.0	96.7	98.3	98.1
Ave - 2018	106.6	110.8		95.3	93.4	98.0	96.0	110.8	103.3	92.0	114.0	99.0	97.8
Ave - 2019	107.2	111.6		93.8	94.6	96.4	100.1	108.1	104.2	87.9	118.5	103.3	97.8
2019													
Oketopa	109.3	115.1		92.3	94.8	96.8	100.1	109.1	104.3	86.2	120.6	103.4	97.5
Novema	109.0	114.5		93.0	94.8	97.3	100.1	109.1	104.3	88.7	120.6	103.4	97.4
Tesema	108.4	113.3		93.4	94.9	96.8	100.1	106.9	104.3	88.7	120.6	108.3	98.2
2020													
Ianuari	107.2	111.3		93.3	94.8	96.8	100.1	106.9	104.2	88.7	120.6	108.3	98.0
Fepuari	109.1	114.5		93.5	94.6	97.6	100.1	106.9	104.2	88.7	120.6	108.3	97.7
Mati	110.3	116.5		93.5	94.0	97.7	100.1	106.9	104.2	88.7	120.6	108.3	97.9
Aperila	108.3	112.8		93.5	93.6	98.1	100.1	110.3	104.2	87.0	120.6	108.3	98.8
Me	106.7	109.9		93.5	95.0	98.8	100.1	110.2	104.2	87.0	120.6	108.3	99.7
Iuni	106.7	109.8		93.5	95.2	98.5	96.8	110.4	104.2	87.0	120.6	108.3	99.9
Iulai	108.1	112.2		93.4	95.5	97.7	96.8	110.4	104.2	87.0	120.6	108.3	99.8
Aukuso	108.3	112.8		93.7	93.0	98.3	96.8	110.0	104.2	87.8	120.6	108.9	99.3
Setema	106.0	108.6		93.7	93.3	98.0	96.8	111.9	104.2	87.8	120.6	111.4	98.9
Oketopa (P)	102.6	103.1		93.7	91.8	98.0	96.8	111.3	104.2	87.2	120.6	111.4	98.5
<u>Suiqa o Pasene (P)</u>													
Oketopa 2020													
mai ia	-3.2%	-5.1%		0.0%	-1.6%	-0.1%	0.0%	-0.5%	0.0%	-0.7%	0.0%	0.0%	-0.4%
Setema 2020													
Oketopa 2020													
mai ia	-6.1%	-10.5%		1.5%	-3.2%	1.2%	-3.3%	2.0%	-0.1%	1.2%	0.0%	7.8%	1.0%
Oketopa 2019													

Faamatalaga : Ofisa o Fuainumera Faamauiina
(P) : Fuainumera le tumau
Note : n.a. Le faaaogaina

Table 3. AVERAGE RETAIL PRICES OF SELECTED COMMODITIES

Commodities	Wt	Unit	2019			2020		
			Aug	Sep	Oct	Aug	Sep	Oct (P)
01 Food and non-alcoholic beverages								
Leg Quarters Chicken	62.2	kg	4.99	5.01	4.97	4.40	3.80	3.10
Raw Sugar	21.3	kg	2.44	2.48	2.45	2.75	2.69	2.48
Bread	17.2	loaf	1.72	1.72	1.69	1.67	1.67	1.67
Corned Beef (a)	15.9	340 grms	8.05	8.03	8.03	8.20	8.20	8.20
Taro	15.2	kg	3.01	2.86	2.47	3.05	2.87	2.65
Re-packed medium grain rice	13.4	kg	2.82	3.01	2.93	2.85	2.83	2.72
Prepacked medium grain rice (a)	13.4	907 grms	3.08	3.10	3.03	2.85	2.85	2.85
Canned fish between \$3.00 and \$3.99 Natural Oil	12.7	425 grms	3.44	3.27	3.37	3.44	3.46	3.34
Bongo	10.2	20 grms	0.80	0.80	0.80	0.85	0.85	0.83
Keke Saina Biscuits (a)	9.2	pkt 10	6.25	6.27	6.18	6.17	6.17	6.17
Ice Cream (a)	9.2	2 ltr	15.32	15.33	15.18	15.17	15.33	15.33
Ramen	9.0	85 gms	1.08	1.08	1.07	1.09	1.09	1.09
Fish (Piece)	7.9	kg	21.04	17.31	20.39	24.55	21.95	21.49
Butter	7.7	454 grms	15.50	15.49	15.77	15.69	15.44	15.44
Round Pancake (a)	7.5	sml	0.15	0.15	0.15	0.15	0.15	0.15
Mutton Flaps	6.6	kg	22.20	22.62	22.11	24.98	24.74	24.33
Canned fish \$4:00 or over N/Oil	6.4	425 grms	4.85	4.84	4.87	5.03	5.11	5.20
Canned fish under \$3.00 in N/Oil	6.4	425 grms	2.53	2.58	2.60	2.82	2.82	2.82
Wings Turkey	6.3	kg	6.24	6.30	7.21	7.55	7.76	7.46
Fish (string)	6.0	kg	11.39	12.54	10.96	10.57	9.94	11.18
Fish (large)	6.0	kg	20.55	19.81	19.57	18.26	17.75	18.11
02 Alcoholic beverages, tobacco and narcotics								
Lager Beer	37.9	355 mls	3.58	3.58	3.60	3.62	3.63	3.63
Pall Mall Filter Cigarettes (Red)	24.3	20 rolls	13.80	13.80	13.80	14.60	14.60	14.60
Pall Mall Menthol Cigarettes (Green)	24.3	20 rolls	13.80	13.80	13.80	14.60	14.60	14.60
Beer (a)	16.3	330 mls	3.40	3.36	3.36	3.46	3.48	3.48
Tobacco (a)	12.6	30 grms	15.00	15.00	15.00	15.00	15.00	15.00
03 Clothing and footwear								
Uniform Ie Faitaga College boys	4.3	size 8-10	29.67	29.67	29.67	29.67	29.67	29.67
Uniform Pa'ave (a)	3.7	size 7	32.00	32.00	31.00	31.00	31.00	31.00
04 Housing, water, electricity, gas and other fuels								
Electricity Cashpower	50.6	kwh	0.67	0.67	0.67	0.51	0.58	0.58
Reservoir treated Water	28.5	15-40 m3	1.67	1.67	1.67	1.47	1.47	1.47
Liquid gas	15.8	9kg	62.00	62.00	62.00	59.25	59.25	59.25
Government house Rent	12.2	2 b/room	650.00	650.00	650.00	650.00	650.00	650.00
05 Furnishings, household equipment and routine household maintenance								
Washing powder (a)	6.3	200 grms	1.90	1.90	1.84	1.87	1.88	1.88
Soap yellow Washing soap	5.9	bar	2.75	2.76	2.76	2.80	2.72	2.71

Mosquito coil	4.4	10 coil	1.18	1.20	1.20	1.30	1.30	1.30
06 Health								
Amoxicillin 500mg tablets (a)	2.5	20 tablets	7.58	7.58	7.58	7.00	7.00	7.00
Hospital Charge	1.1	per night	22.50	22.50	22.50	22.50	22.50	22.50
07 Transport								
Petrol	60.8	1 ltr	2.53	2.64	2.62	2.13	2.15	2.21
Taxi Fare P.O to Motootua Hosp	8.2	per trip	4.80	4.80	4.80	4.80	4.80	4.80
Taxi Fares P.O to Malua	8.2	per trip	31.30	31.30	31.30	31.30	31.30	31.30
Taxi Fares P.O to Falefa	8.2	per trip	43.20	43.20	43.20	43.20	43.20	43.20
Air Fares Fagalii Pago Fagalii	6.8	return trip	395.00	395.00	395.00	395.00	395.00	395.00
Air Fares Apia Auckland Apia	6.8	1 month	1297.55	1443.92	1651.54	1257.87	1257.87	1257.87
08 Communication								
Calling per minute Rate cell phone (a)	10.02	per minute	0.43	0.43	0.43	0.43	0.43	0.43
Internet data bundles per mb Rate (a)	10.02	per mb	0.25	0.25	0.25	0.25	0.25	0.25
Calling per minute Rate cell phone (a)	10.02	per minute	0.44	0.44	0.44	0.44	0.44	0.44
Internet data bundles per mb Rate (a)	10.02	per mb	0.20	0.20	0.20	0.20	0.20	0.20
09 Recreation and culture								
Television LCD 32" (a)	2.30	LCD 32"	827.67	827.67	827.67	852.83	852.83	852.83
Exercise Book warwick	1.44	1B4	1.37	1.37	1.37	1.40	1.40	1.40
Laptop (a)	1.33	each	2918.60	2918.60	2918.60	3018.60	3018.60	2938.60
10 Education								
Fees PTA Primary Y Urban Registration fees (a)	7.23	Year 6	82.50	82.50	82.50	82.50	82.50	82.50
Fees PTA Secondary Y Urban Registration fees (a)	5.11	Year 10	58.00	58.00	58.00	58.00	58.00	58.00
Fees Tertiary NUS registration School Fees	3.79	registration	322.00	322.00	322.00	322.00	322.00	322.00
Fees Secondary Y Examination Fees (a)	3.61	Y12-13	25.50	25.50	25.50	25.50	25.50	25.50
11 Restaurants and hotels								
Fish & Chip Meal	7.79	1 serve	9.17	9.17	9.17	9.17	9.58	9.58
Curry & Chopsuey Meal	4.87	1 serve	3.67	3.67	3.67	4.67	4.67	4.67
Chicken & Chips Meal (a)	4.87	1 serve	9.64	9.64	9.64	9.93	10.00	10.00
Steam rice & chicken Meal (a)	4.87	1 serve	4.83	4.83	4.83	4.83	5.00	5.00
12 Miscellaneous goods and services								
Paper Sofan deluxe ply Toilet Paper	8.52	250 sheets	1.00	0.99	0.99	1.08	1.05	1.05
Hair Gel	4.59	1124 ml	4.43	4.40	4.40	4.47	4.47	4.47
Price for Storage of remains (a)	4.41	per day	60.00	60.00	60.00	60.00	60.00	60.00
Basic Casket (a)	4.41	each	1966.67	1966.67	1966.67	1966.67	1966.67	1966.67
Standard Embalming (a)	4.41	1 person	1500.00	1500.00	1500.00	1500.00	1500.00	1500.00
Toilet soap (a)	4.38	90g	1.96	1.96	1.96	1.95	1.97	1.97
Diapers (a)	4.19	5kg-10kg	8.99	8.99	8.99	8.46	8.33	8.33

Source : Samoa Bureau Statistics

(a) : New commodity from February 2016

(P) : Provisional figures

Note : Please note unit of conversion was in pound's (lb's) but been converted into kilograms (kg)

PUSA 4. FUAFATATAU O TAU O OLOA AUINA MAI FAFO

(Piriota Faavae : Tuufaatasiga o Tau o Oloa Fepuari 2016 = 100)

Vaega	Tuufaatasiga o Oloa	Mea'ai ma Vaiinu	Ava Malosi ma Tapaa	Lavalava ma Se'evae	Fale, Suavai, Eletise, Kesi ma isi	Meafale, Mea Faigaluega mo Faaleleia o Aiga	Soifua Maloloina	Femalagaiga	Fesootaiga	Faafiagiaga ma Aganuu	Aoaoga	Faleaiga	Isi Oloa ma Auunaga
Mamafa	494.7	269.1	23.8	15.2	28.3	26.9	2.5	88.6	<i>n.a</i>	5.6	<i>n.a</i>	<i>n.a</i>	34.7
Ave - 2017	107.3	110.1	110.0	97.0	97.6	98.9	91.7	111.2		90.0			97.1
Ave - 2018	111.9	113.8	113.5	96.1	100.6	97.6	94.3	124.0		92.0			96.6
Ave - 2019	111.1	114.5	118.3	93.7	100.8	95.8	97.9	117.3		87.9			96.7
2019													
Oketopa	113.5	118.8	117.9	92.4	100.8	96.3	97.5	118.1		86.2			96.2
Novema	113.7	118.1	118.7	93.4	101.3	96.9	97.5	120.5		88.7			96.1
Tesema	112.4	116.3	117.8	93.4	101.0	96.3	97.5	118.8		88.7			97.2
2020													
Ianuari	111.5	113.8	117.8	93.4	101.0	96.3	97.5	121.4		88.7			96.9
Fepuari	113.8	118.1	117.8	93.4	101.3	97.2	97.5	120.8		88.7			96.5
Mati	114.8	120.7	117.4	93.1	100.3	97.3	97.5	119.2		88.7			96.8
Aperila	111.6	116.0	117.4	93.1	98.0	97.8	97.5	115.8		87.0			97.9
Me	107.7	112.6	117.4	93.1	96.7	98.6	97.5	104.0		87.0			99.0
Iuni	105.7	112.4	117.4	93.1	94.3	98.3	92.7	94.7		87.0			99.3
Iulai	107.6	115.2	117.4	93.0	94.4	97.3	92.7	96.4		87.0			99.2
Aukuso	108.8	115.9	117.4	93.4	93.6	98.0	92.7	101.4		87.8			98.5
Setema	105.9	110.4	116.1	93.4	94.1	97.7	92.7	102.7		87.8			98.0
Oketopa (P)	102.2	103.2	116.1	93.4	92.8	97.6	92.7	104.4		87.2			97.5
<u>Suiga o Pasene (P)</u>													
Oketopa 2020													
mai ia	-3.5%	-6.6%	0.0%	0.0%	-1.4%	-0.1%	0.0%	1.6%		-0.7%			-0.5%
Setema 2020													
Oketopa 2020													
mai ia	-10.0%	-13.2%	-1.5%	1.1%	-7.9%	1.3%	-4.9%	-11.6%		1.2%			1.3%
Oketopa 2019													
Faamatalaga : Ofisa o Fuainumera faamauiina													
(P) : Fuainumera le tumau													
Note : n.a. Le faaogaina													

PUSA 5. FUAFATATAU FAVAE O TAU O OLOA AUINA MAI FAFO
(Piriota Faavae : Tuufaatasiga o Tau o Oloa Fepuari 2016 = 100)

Vaega	Tuufaatasiga o Oloa	Mea'ai ma Vaiinu	Ava Malosi ma Tapaa	Lavalava ma Se'evae	Fale, Suavai, Eletise, Kesi ma isi	Meafale, Mea Faigaluega mo Faaleleia o Aiga	Soifua Maloloina	Femalagaiga	Fesootaiga	Faafiagiaga ma Aganuu	Aoaoga	Faleaiga	Isi Oloa ma Auauauna
Mamafa	401.2	269.1	n.a	15.2	24.2	26.9	2.5	23.0	n.a	5.6	n.a	n.a	34.7
Ave - 2017	106.0	110.1		97.0	93.8	98.9	91.7	104.5		90.0			97.1
Ave - 2018	108.8	113.8		96.1	93.4	97.6	94.3	111.2		92.0			96.6
Ave - 2019	108.9	114.5		93.7	94.6	95.8	97.9	108.1		87.9			96.7
2019													
Oketopa	111.8	118.8		92.4	94.8	96.3	97.5	109.2		86.2			96.2
Novema	111.4	118.1		93.4	94.8	96.9	97.5	109.2		88.7			96.1
Tesema	110.1	116.3		93.4	94.9	96.3	97.5	106.7		88.7			97.2
2020	0.0	0.0		0.0	0.0	0.0	0.0	0.0		0.0			0.0
Ianuari	108.4	113.8		93.4	94.8	96.3	97.5	106.7		88.7			96.9
Fepuari	111.3	118.1		93.4	94.6	97.2	97.5	106.7		88.7			96.5
Mati	113.0	120.7		93.1	94.0	97.3	97.5	106.7		88.7			96.8
Aperila	110.2	116.0		93.1	93.6	97.8	97.5	110.6		87.0			97.9
Me	108.1	112.6		93.1	95.0	98.6	97.5	110.4		87.0			99.0
Iuni	108.0	112.4		93.1	95.2	98.3	92.7	110.7		87.0			99.3
Iulai	109.8	115.2		93.0	95.5	97.3	92.7	110.7		87.0			99.2
Aukuso	110.1	115.9		93.4	93.0	98.0	92.7	110.2		87.8			98.5
Setema	106.5	110.4		93.4	93.3	97.7	92.7	112.4		87.8			98.0
Oketopa (P)	101.4	103.2		93.4	91.8	97.6	92.7	111.7		87.2			97.5
<u>Suiga o Pasene (P)</u>													
Oketopa 2020 mai ia	-4.7%	-6.6%		0.0%	-1.6%	-0.1%	0.0%	-0.6%		-0.7%			-0.5%
Setema 2020													
Oketopa 2020 mai ia	-9.2%	-13.2%		1.1%	-3.2%	1.3%	-4.9%	2.3%		1.2%			1.3%
Oketopa 2019													
Faamatalaga : Ofisa o Fuainumera faamauiina													
(P) : Fuainumera le tumau													
Note : n.a. Le faaogaina													

PUSA 6. FUAFATATAU O TAU O OLOA MA AUAUNAGA O LOO GAOSI I TOTONU OLE ATUNUU
(Piriota Faavae : Tuufaatasiga o Tau o Oloa Fepuari 2016 = 100)

Vaega	Tuufaatasiga o Oloa	Mea'ai ma Vaiinu	Ava Malosi ma Tapaa	Lavalava ma Se'evae	Fale, Suavai, Eletise, Kesi ma isi	Meafale, Mea Faigaluega mo Faaleleia o Aiga	Soifua Maloloina	Femalagaiga	Fesootaiga	Faafiagiaga ma Aganuu	Aoaoga	Faleaiga	Isi Oloa ma Auauunaga
Mamafa	505.3	134.6	104.6	6.0	91.3	3.9	2.2	59.9	51.5	0.4	19.7	22.4	8.8
Ave - 2017	98.5	94.7	107.1	95.7	90.6	100.1	100.0	101.6	101.2	100.0	97.9	98.3	102.3
Ave - 2018	102.6	105.3	112.0	93.3	88.1	100.3	100.0	101.7	103.3	100.0	110.4	99.0	102.3
Ave - 2019	105.5	107.3	116.5	93.8	93.2	100.3	102.5	102.3	104.2	100.0	113.5	103.3	102.3
2019													
Oketopa	106.4	106.1	117.6	92.1	97.3	100.3	103.0	104.5	104.3	100.0	114.9	103.4	102.3
Novema	106.0	103.6	117.2	92.1	96.7	100.3	103.0	108.1	104.3	100.0	114.9	103.4	102.3
Tesema	105.4	104.1	117.2	93.3	96.7	100.3	103.0	99.7	104.3	100.0	114.9	108.3	102.3
2020													
Ianuari	108.0	110.5	120.1	92.9	98.6	100.3	103.0	99.6	104.2	100.0	114.9	108.3	102.3
Fepuari	107.3	109.0	119.7	93.7	96.0	100.3	103.0	101.4	104.2	100.0	114.9	108.3	102.3
Mati	107.3	109.9	119.7	94.4	95.4	100.3	103.0	100.8	104.2	100.0	114.9	108.3	102.3
Aperila	104.3	107.5	119.3	94.4	82.6	100.3	103.0	100.8	104.2	100.0	114.9	108.3	102.3
Me	103.9	106.4	119.3	94.4	82.6	100.3	103.0	99.9	104.2	100.0	114.9	108.3	102.3
Iuni	104.1	106.9	119.5	94.4	82.6	100.3	103.0	99.9	104.2	100.0	114.9	108.3	102.3
Iulai	105.0	108.8	121.6	94.4	82.6	100.3	103.0	99.9	104.2	100.0	114.9	108.3	102.3
Aukuso	105.2	109.2	121.8	94.4	82.6	100.3	103.0	99.9	104.2	100.0	114.9	108.9	102.3
Setema	105.3	105.9	122.0	94.4	87.1	100.3	103.0	99.9	104.2	100.0	114.9	111.4	102.3
Oketopa (P)	105.0	104.8	121.9	94.4	87.1	100.3	103.0	99.9	104.2	100.0	114.9	111.4	102.3
<u>Suiqa o Pasene (P)</u>													
Oketopa 2020													
mai ia	-0.3%	-1.1%	-0.1%	0.0%	0.0%	0.0%	0.0%	0.0%	0.0%	0.0%	0.0%	0.0%	0.0%
Setema 2020													
Oketopa 2020													
mai ia	-1.4%	-1.3%	3.7%	2.5%	-10.5%	0.0%	0.0%	-4.4%	-0.1%	0.0%	0.0%	7.8%	0.0%
Oketopa 2019													
Faamatalaga : Ofisa o Fuainumera faamauiina													
(P) : Fuainumera le tumau													
Note : n.a. Le faaogaina													

PUSA 7. FUAFATATAU FAABAE O TAU O OLOA MA AUAUNAGA O LOO GAOSI I TOTONU OLE ATUNUU

(Piriota Faavae : Tuufaatasiga o Tau o Oloa Fepuari 2016 = 100)

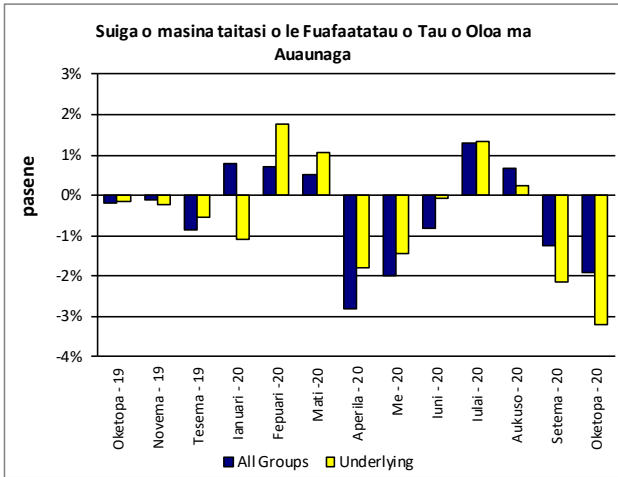
Vaega	Tuufaatasiga o Oloa	Mea'ai ma Vaiinu	Ava Malosi ma Tapaa	Lavalava ma Se'evae	Fale, Suavai, Eletise, Kesi ma isi	Meafale, Mea Faigaluega mo Faaleleia o Aiga	Soifua Maloloina	Femalagaiga	Fesootaiga	Faafiafiaga ma Aganuu	Aoaoga	Faleaiga	Isi Oloa ma Auauunaga
Mamafa	185.5	76.1	n.a	6.0	n.a	3.9	1.0	3.4	51.5	n.a	12.3	22.4	8.8
Ave - 2017	99.7	99.6		95.7		100.1	100.0	101.8	101.2		96.7	98.3	102.3
Ave - 2018	101.9	100.3		93.3		100.3	100.0	108.3	103.3		114.0	99.0	102.3
Ave - 2019	103.6	101.6		93.8		100.3	105.2	108.6	104.2		118.5	103.3	102.3
2019													
Oketopa	103.8	102.0		92.1		100.3	106.3	108.6	104.3		120.6	103.4	102.3
Novema	103.9	102.1		92.1		100.3	106.3	108.6	104.3		120.6	103.4	102.3
Tesema	104.7	102.5		93.3		100.3	106.3	108.6	104.3		120.6	108.3	102.3
2020													
Ianuari	104.6	102.5		92.9		100.3	106.3	108.6	104.2		120.6	108.3	102.3
Fepuari	104.5	102.0		93.7		100.3	106.3	108.6	104.2		120.6	108.3	102.3
Mati	104.4	101.7		94.4		100.3	106.3	108.6	104.2		120.6	108.3	102.3
Aperila	104.2	101.3		94.4		100.3	106.3	108.6	104.2		120.6	108.3	102.3
Me	103.8	100.4		94.4		100.3	106.3	108.6	104.2		120.6	108.3	102.3
Iuni	103.9	100.5		94.4		100.3	106.3	108.6	104.2		120.6	108.3	102.3
Iulai	104.3	101.7		94.4		100.3	106.3	108.6	104.2		120.6	108.3	102.3
Aukuso	104.6	102.1		94.4		100.3	106.3	108.6	104.2		120.6	108.9	102.3
Setema	105.0	102.4		94.4		100.3	106.3	108.6	104.2		120.6	111.4	102.3
Oketopa (P)	105.2	102.7		94.4		100.3	106.3	108.6	104.2		120.6	111.4	102.3
<u>Suiqa o Pasene (P)</u>													
Oketopa 2020 mai ia	0.1%	0.3%		0.0%		0.0%	0.0%	0.0%	0.0%		0.0%	0.0%	0.0%
Setema 2020													
Oketopa 2020 mai ia	1.3%	0.7%		2.5%		0.0%	0.0%	0.0%	-0.1%		0.0%	7.8%	0.0%
Oketopa 2019													

Faamatalaga : Ofisa o Fuainumera faamauiina

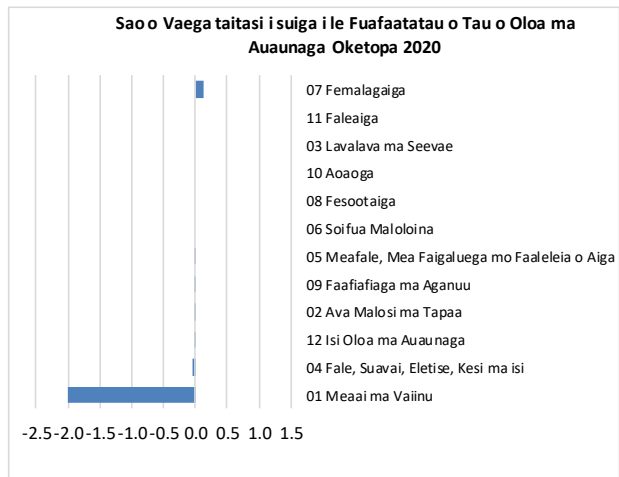
(P) : Fuainumera le tumau

Note : n.a. Le faaogaina

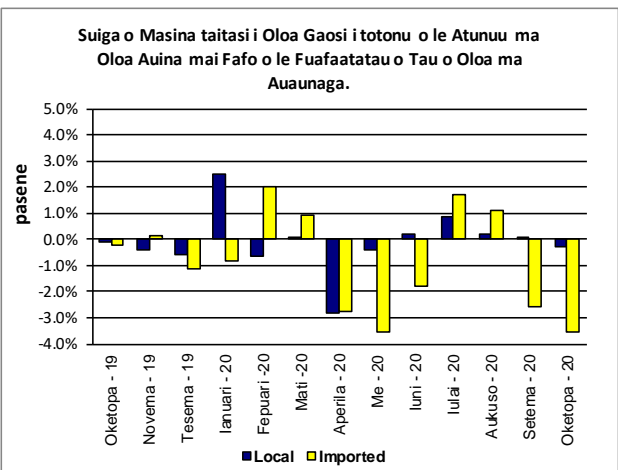
Kalafi.5



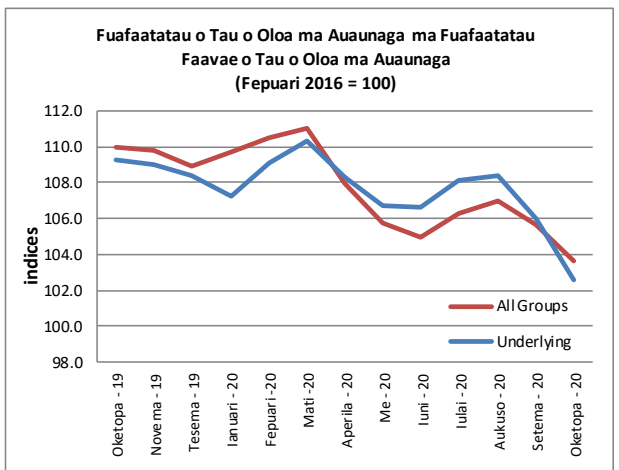
Kalafi.6



Kalafi.7



Kalafi.8



Kalafi.9

