

Please address all correspondence
To Government Statistician
In reply, please quote the file reference



GOVERNMENT OF SAMOA

File Ref: CPI 04/2020

SAMOA BUREAU OF STATISTICS

CONSUMER PRICE INDEX APRIL 2020

Key findings:

The prices of water and electricity decreased significantly as regulated by Government in response to the effects of COVID 19. Price of fuel and imported food contributed to the overall decline in the CPI.

The Consumer Price Index for April 2020 decreased by 2.8 percent compared to the previous month.

- Housing, Water, Electricity, Gas and other Fuels index decreased by 10.7 percent driven by reduced electricity and water prices.
- The Food and Non Alcoholic Beverages index decreased by 3.3 percent.
- The continued decrease of oil prices internationally in April 2020 has pushed local fuel prices down as reflected in the 1.8 percent decline in the Transport index.
- The Average Annual Inflation for the year ended April 2020 was 2.0 percent.

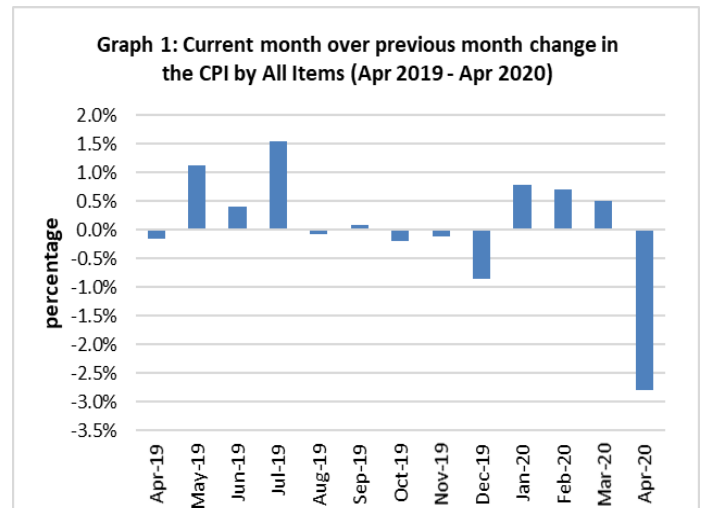
In the year to April 2020, the CPI rose 1.0 percent.

SUMMARY

The Consumer Price Index for April 2020 was 2.8 percent lower than in March 2020 and was 1.0 percent higher than April 2019.

The decrease of the Local Goods component by 2.9 percent from the previous month was due to lower prices for local food electricity (kwh) and treated water, which was also the main contributor to the decrease of 2.8 percent in the All Items Consumer Price Index.

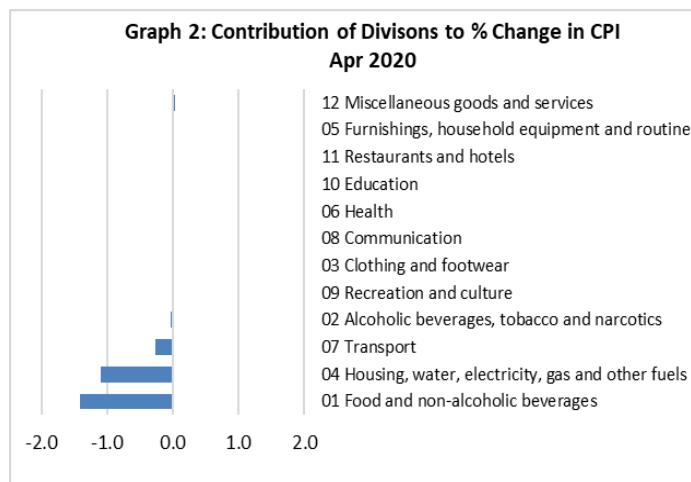
The Imported Goods Component also registered a decrease of 2.8 percent from the previous month. Graph 1 shows the month to month percentage changes in the Consumer Price Index by all Divisions from April 2019 to April 2020.



Source : Samoa Bureau of Statistics

Total All Divisions Contribution

As depicted in Graph 2, Food and Non Alcoholic Beverages, Housing, Water, Electricity, Gas and other Fuels and Transport divisions were the main contributors to the overall decrease of 2.8 percent in the All Division Consumer Price Index.



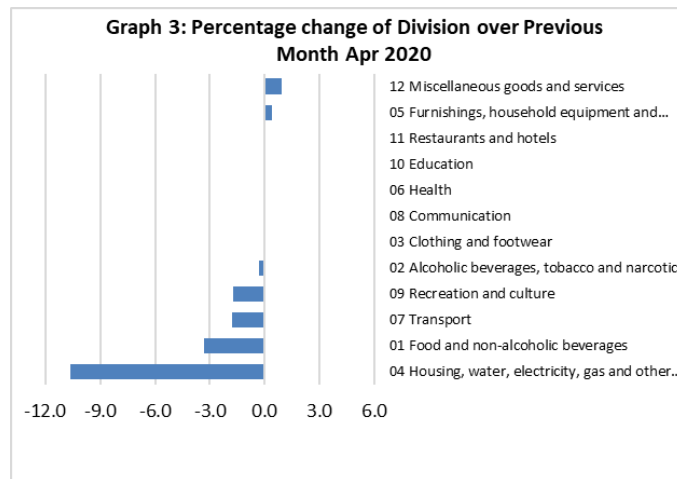
Source : Samoa Bureau of Statistics

Consumer Price Index (% Change)

The 2.8 percent decrease in the Overall Index was mainly due to a decrease of 10.7 percent in the Housing, Water, Electricity, Gas and other Fuels index. The Food and Non Alcoholic Beverages, Transport, Recreation and Culture and Alcoholic Beverages and Tobacco indices showed decreases of 3.3, 1.8, 1.7 and 0.3 percent respectively.

On the contrary, increases were recorded for other divisions namely Miscellaneous Goods and Services with 0.9 percent and Furnishing, Household Equipment and Maintenance with 0.4 percent.

No changes were recorded for the Clothing and Footwear, Health, Communication, Education and Restaurants indices. Graphically presented in Graph 3 is the April 2020 percentage change for all divisions from March 2020.



Source : Samoa Bureau of Statistics

Local Goods Component

The Local Goods Component of the Consumer Price Index registered a decrease of 2.9 percent when compared to the previous month. This decrease was mainly due to lower prices recorded for electricity (kwh), treated water, taro, rice, fresh fish (piece), Chinese cabbage, egg, ripe banana, tomato and head cabbage.

Imported Goods Component

Decreased prices recorded for imported food, fuel (petrol, diesel and kerosene), paint, cement, timber and television (LCD) have resulted in the 2.8 percent decrease in the Imported Good Component.

Housing, Water, Electricity, Gas and other Fuels Index

The 10.7 percent decrease in the Housing, Water, Electricity, Gas and other Fuels index was a result of the lower prices recorded for electricity (kwh), treated water, kerosene, paint, cement and timber.

Food and Non Alcoholic Beverages Index

Lower prices recorded for chicken leg quarter, taro, rice, fresh fish (piece), Chinese cabbage, egg, onion, ripe banana, potatoes, tomato and head cabbage is reflected in the 3.3 percent decrease in the Food and Non Alcoholic Beverages index.

Transport Index

Decreased prices recorded for fuel (petrol and diesel) is resulted in the 1.8 percent decrease in the Transport index.

Recreation and Culture Index

The 1.7 percent decrease in the Recreation and Culture index was a reflection of the lower prices recorded for television (LCD) and exercise book.

Miscellaneous Goods and Services Index

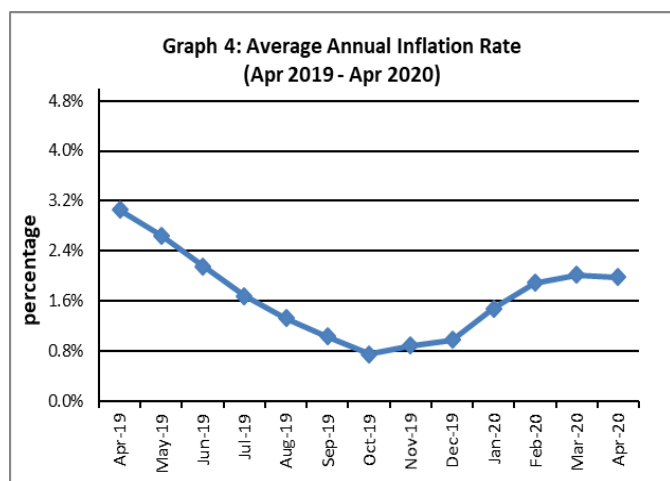
Higher prices recorded for toilet paper and hair gel is reflected in the 0.9 percent increase in the Miscellaneous Goods and Services index.

Underlying Indices ^{1/}

The All Items Underlying Index for April 2020 registered a decrease of 1.8 percent when compared to March 2020, and an increase of 2.0 percent when compared to April 2019. The Imported Items Underlying Index registered a decrease of 2.5 percent, while the Local Items Underlying Index also recorded a decrease of 0.1 percent.

Inflation Rate

The average annual inflation rate for the year ended April 2020 was 2.0 percent. For the twelve months ending April 2019 the inflation rate was 3.1 percent. Presented in Graph 4 is the average annual inflation rate (April 2019 - April 2020).



Source : Samoa Bureau of Statistics

The attached Tables and Graphs provide the user with more detailed analysis.

Technical Notes:

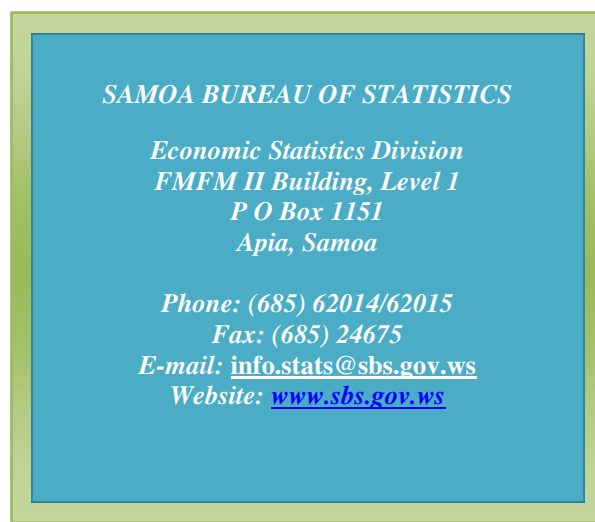
The Consumer Price (CPI) measures the rate of inflation for Samoa. It is designed to measure the change in prices for the goods purchased by households in Samoa. The CPI measures the change in prices by comparing the prices for a basket of goods and services

at the collection period with the price for the same goods in a base period.

The basket of goods that is priced is based on the average expenditures of households as recorded in the Household Income and Expenditure Survey (HIES). The HIES survey identifies how much households spend on different items. The more households spend on an item on average, the more important it is to the price index, and the higher the weight in the index.

^{1/} Monthly movements in the 'headline' CPI series can be volatile. This volatility reflects price changes in particular items that may be due, among other factors, to fluctuations in commodity markets and agricultural conditions, policy changes, or seasonal or infrequent price resetting.

Underlying inflation is a measure of inflation that excludes certain items that face volatile price movements. Underlying inflation eliminates products that can have temporary price shocks because these shocks can diverge from the overall trend of inflation and give a false measure of inflation.



Date of release: 11th May 2020.

The next Consumer Price Index will be released on 11th June 2020.

Aliimuamua Malaefono Tauā - T.Faasalaina
GOVERNMENT STATISTICIAN/(CEO)

Table 1. CONSUMER PRICE INDEX.

(Base Period : Average Prices February 2016 = 100)

Group	All Items	Food and Non Alcoholic Beverages	Alcoholic Beverages, Tobacco and Narcotics	Clothing and Footwear	Housing, Water, Electricity, Gas and other Fuels	Furnishings, Household Equipment, and Maintenance	Health	Transport	Communication	Recreation and Culture	Education	Restaurants	Miscellaneous goods and services
<i>Weights</i>	1000.0	403.7	128.4	21.2	119.6	30.8	4.6	148.5	51.5	6.1	19.7	22.4	43.5
Ave - 2017	102.9	105.1	107.6	96.6	92.2	99.1	95.6	107.3	101.2	90.7	97.9	98.3	98.1
Ave - 2018	107.2	111.0	112.3	95.3	91.0	98.0	97.0	115.0	103.3	92.6	110.4	99.0	97.8
Ave - 2019	108.3	112.1	116.8	93.8	95.0	96.4	100.0	111.3	104.2	88.7	113.5	103.3	97.8
2019													
April	106.8	110.3	116.3	95.0	93.4	95.2	100.1	108.2	105.2	90.1	110.6	103.4	98.0
May	108.0	111.6	115.9	95.3	93.6	93.6	100.1	113.1	104.3	88.2	114.9	103.4	98.0
June	108.5	111.2	116.0	95.9	93.6	95.8	100.1	116.8	104.3	87.1	114.9	103.4	97.2
July	110.1	114.7	117.7	92.2	98.3	97.4	100.1	113.3	104.3	87.1	114.9	103.4	97.4
August	110.1	116.0	117.7	92.2	97.9	97.0	100.1	109.4	104.3	87.1	114.9	103.4	97.9
September	110.1	115.3	117.5	92.1	98.1	97.3	100.1	112.3	104.3	87.1	114.9	103.4	97.5
October	109.9	114.6	117.7	92.3	98.1	96.8	100.1	112.6	104.3	87.1	114.9	103.4	97.5
November	109.8	113.2	117.5	93.0	97.8	97.3	100.1	115.5	104.3	89.5	114.9	103.4	97.4
December	108.9	112.3	117.3	93.4	97.7	96.8	100.1	111.1	104.3	89.5	114.9	108.3	98.2
2020													
January	109.7	112.7	119.7	93.3	99.1	96.8	100.1	112.6	104.2	89.5	114.9	108.3	98.0
February	110.5	115.1	119.3	93.5	97.3	97.6	100.1	113.0	104.2	89.5	114.9	108.3	97.7
March	111.0	117.1	119.3	93.5	96.6	97.7	100.1	111.8	104.2	89.5	114.9	108.3	97.9
April (P)	107.9	113.2	118.9	93.5	86.3	98.1	100.1	109.8	104.2	88.0	114.9	108.3	98.8
<u>Percentage Change (P)</u>													
Apr 2020 over Mar 2020	-2.8%	-3.3%	-0.3%	0.0%	-10.7%	0.4%	0.0%	-1.8%	0.0%	-1.7%	0.0%	0.0%	0.9%
Apr 2020 over Apr 2019	1.0%	2.6%	2.3%	-1.6%	-7.7%	3.0%	0.0%	1.4%	-0.9%	-2.4%	3.8%	4.7%	0.8%

Source : Samoa Bureau Statistics

(P) : Provisional figures

Note : n.a. Not applicable

Table 2. ALL ITEMS UNDERLYING INDEX

(Base Period : Average Prices February 2016 = 100)

Group	All Items	Food and Non Alcoholic Beverages	Alcoholic Beverages, Tobacco and Narcotics	Clothing and Footwear	Housing, Water, Electricity, Gas and other Fuels	Furnishings, Household Equipment, and Maintenance	Health	Transport	Communication	Recreation and Culture	Education	Restaurants	Miscellaneous goods and services
<i>Weights</i>	586.7	345.3	<i>n.a</i>	21.2	24.2	30.8	3.5	26.4	51.5	5.6	12.3	22.4	43.5
Ave - 2017	104.1	107.9		96.6	93.8	99.1	94.2	104.2	101.2	90.0	96.7	98.3	98.1
Ave - 2018	106.6	110.8		95.3	93.4	98.0	96.0	110.8	103.3	92.0	114.0	99.0	97.8
Ave - 2019	107.2	111.6		93.8	94.6	96.4	100.1	108.1	104.2	87.9	118.5	103.3	97.8
2019													
April	106.1	109.8		95.0	94.6	95.2	100.1	108.4	105.2	89.3	113.9	103.4	98.0
May	106.4	110.3		95.3	94.6	93.6	100.1	108.4	104.3	87.3	120.6	103.4	98.0
June	106.7	110.8		95.9	94.1	95.8	100.1	108.4	104.3	86.2	120.6	103.4	97.2
July	108.4	113.7		92.2	94.5	97.4	100.1	108.4	104.3	86.2	120.6	103.4	97.4
August	109.1	114.9		92.2	94.5	97.0	100.1	108.4	104.3	86.2	120.6	103.4	97.9
September	109.4	115.4		92.1	94.4	97.3	100.1	109.1	104.3	86.2	120.6	103.4	97.5
October	109.3	115.1		92.3	94.8	96.8	100.1	109.1	104.3	86.2	120.6	103.4	97.5
November	109.0	114.5		93.0	94.8	97.3	100.1	109.1	104.3	88.7	120.6	103.4	97.4
December	108.4	113.3		93.4	94.9	96.8	100.1	106.9	104.3	88.7	120.6	108.3	98.2
2020													
January	107.2	111.3		93.3	94.8	96.8	100.1	106.9	104.2	88.7	120.6	108.3	98.0
February	109.1	114.5		93.5	94.6	97.6	100.1	106.9	104.2	88.7	120.6	108.3	97.7
March	110.3	116.5		93.5	94.0	97.7	100.1	106.9	104.2	88.7	120.6	108.3	97.9
April (P)	108.3	112.8		93.5	93.6	98.1	100.1	110.3	104.2	87.0	120.6	108.3	98.8
<u>Percentage Change (P)</u>													
Apr 2020 over	-1.8%	-3.2%		0.0%	-0.4%	0.4%	0.0%	3.2%	0.0%	-1.9%	0.0%	0.0%	0.9%
Mar 2020													
Apr 2020 over	2.0%	2.7%		-1.6%	-1.1%	3.0%	0.0%	1.8%	-0.9%	-2.6%	5.9%	4.7%	0.8%
Apr 2019													

Source : Samoa Bureau Statistics

(P) : Provisional figures

Note : n.a. Not applicable

Table 3. AVERAGE RETAIL PRICES OF SELECTED COMMODITIES

Commodities	Wt	Unit	2019			2020		
			Feb	Mar	Apr	Feb	Mar	Apr (P)
01 Food and non-alcoholic beverages								
Leg Quarters Chicken	62.2	kg	3.74	4.19	4.07	4.81	5.12	4.62
Raw Sugar	21.3	kg	2.76	2.65	2.62	2.55	2.50	2.51
Bread	17.2	loaf	1.70	1.70	1.70	1.67	1.67	1.67
Corned Beef (a)	15.9	12 oz	8.13	8.13	8.13	8.03	8.12	8.12
Taro	15.2	kg	2.44	2.07	2.10	2.41	2.38	2.30
Re-packed medium grain rice	13.4	kg	3.10	2.96	2.96	2.87	2.93	2.83
Prepacked medium grain rice (a)	13.4	907g	3.10	2.98	3.28	2.82	2.77	2.77
Canned fish betw een \$3.00 and \$3.99 Natural Oil	12.7	15 oz	3.42	3.45	3.40	3.40	3.43	3.37
Bongo	10.2	20grms	0.81	0.79	0.78	0.80	0.80	0.80
Keke Saina Biscuits (a)	9.2	pkt 10	6.39	6.39	6.29	6.38	6.25	6.25
Tip Top Ice Cream (a)	9.2	2 ltr	15.32	15.32	15.32	15.33	15.33	15.33
Ramen maggie	9.0	85gms	1.08	1.08	1.08	1.08	1.08	1.07
Fish (Piece)	7.9	kg	16.08	21.67	21.56	21.27	22.70	20.94
Butter Anchor	7.7	454g	13.96	14.46	14.14	15.77	15.77	16.07
Round Pancake (a)	7.5	sml	0.15	0.15	0.15	0.15	0.15	0.15
Mutton Flaps	6.6	kg	22.02	21.81	21.88	23.24	23.77	23.69
Canned fish \$4:00 or over N/Oil	6.4	15 oz	5.22	5.21	4.95	4.81	4.85	5.05
Canned fish under \$3.00 in N/Oil	6.4	15 oz	2.52	2.55	2.60	2.62	2.70	2.68
Wings Turkey	6.3	kg	6.25	6.27	6.49	7.45	7.18	7.44
Fish (string)	6.0	kg	11.15	10.84	11.06	11.25	10.81	11.13
Fish (large)	6.0	kg	16.58	17.51	15.93	17.54	15.66	16.81
02 Alcoholic beverages, tobacco and narcotics								
Lager Beer	37.9	355 mls	3.64	3.64	3.59	3.63	3.64	3.59
Pall Mall Filter Cigarettes (Red)	24.3	20 rolls	13.40	13.40	13.40	14.20	14.20	14.20
Pall Mall Menthol Cigarettes (Green)	24.3	20 rolls	13.40	13.40	13.40	14.20	14.20	14.20
Beer (a)	16.3	330 mls	3.36	3.36	3.36	3.36	3.38	3.38
Winfield Tobacco (a)	12.6	packet	15.00	15.00	15.00	15.00	15.00	15.00
03 Clothing and footwear								
Uniform le Faitaga College boys	4.3	size 8-10	29.67	29.67	29.67	29.67	29.67	29.67
Uniform Pa'ave (a)	3.7	size 7	35.33	35.33	35.33	32.00	31.00	31.00
04 Housing, water, electricity, gas and other fuels								
Electricity / Cashpower / kw h 1- 100 / total cost per	50.6	kw h	0.58	0.67	0.67	0.65	0.64	0.51
Reservoir treated Water	28.5	15-40 m3	1.40	1.40	1.40	1.67	1.67	1.47
Liquid gas	15.8	9kg	62.00	62.00	62.00	62.00	62.00	62.00
Government house Rent	12.2	2 b/room	650.00	650.00	650.00	650.00	650.00	650.00
05 Furnishings, household equipment and routine household maintenance								
Washing powder (a)	6.3	200g	1.73	1.73	1.71	1.93	1.90	1.90
Soap yellow Washing soap	5.9	bar	2.75	2.69	2.69	2.75	2.75	2.81
Mosquito coil	4.4	10 coil	1.20	1.20	1.20	1.23	1.28	1.28

06 Health

Amoxicillin mg Tablets (a)	2.5	500 mg	7.92	7.58	7.58	7.58	7.58	7.58
Hospital Charge	1.1	night	22.50	22.50	22.50	22.50	22.50	22.50

07 Transport

Petrol	60.8	1 ltr	2.41	2.40	2.48	2.72	2.67	2.55
Taxi Fare PO Motootua Hosp	8.2	per trip	4.80	4.80	4.80	4.80	4.80	4.80
Taxi Fares PO Malua	8.2	per trip	31.30	31.30	31.30	31.30	31.30	31.30
Taxi Fares PO Falefa	8.2	per trip	43.20	43.20	43.20	43.20	43.20	43.20
Air Fares Fagalii Pago Fagalii	6.8	return trip	395.00	395.00	395.00	395.00	395.00	395.00
Air Fares Apia Auckland Apia	6.8	1 month	1507.83	1259.11	1234.21	1313.02	1257.87	1257.87

08 Communication

Calling per minute Rate cell phone (a)	10.02	per minute	0.45	0.45	0.45	0.43	0.43	0.43
Internet data bundles per mb Rate (a)	10.02	per mb	0.25	0.25	0.25	0.25	0.25	0.25
Calling per minute Rate cell phone (a)	10.02	per minute	0.44	0.44	0.44	0.44	0.44	0.44
Internet data bundles per mb Rate (a)	10.02	per mb	0.20	0.20	0.20	0.20	0.20	0.20

09 Recreation and culture

Television (a)	2.30	LCD	968.83	918.83	918.83	861.00	861.00	852.83
Exercise Book w arw ick	1.44	1B4 64 pa	1.35	1.35	1.37	1.47	1.47	1.40
Laptop (a)	1.33	each	2878.60	2938.60	2938.60	2918.60	2918.60	2918.60

10 Education

Fees PTA Primary Y Urban Registration fees (a)	7.23	Year 6	82.50	82.50	82.50	82.50	82.50	82.50
Fees PTA Secondary Y Urban Registration fees (a)	5.11	Year 10	50.00	50.00	50.00	58.00	58.00	58.00
Fees Tertiary NUS registration School Fees	3.79	registratioi	320.00	322.00	322.00	322.00	322.00	322.00
Fees Secondary Y Examination Fees (a)	3.61	Y12-13	25.50	25.50	25.50	25.50	25.50	25.50

11 Restaurants and hotels

Fish & Chip Meal	7.79	1 serve	9.17	9.17	9.17	9.17	9.17	9.17
Curry & Chopsuey Meal	4.87	1 serve	3.33	3.67	3.67	4.67	4.67	4.67
Chicken & Chips Meal (a)	4.87	1 serve	9.36	9.36	9.64	9.64	9.64	9.64
Steam rice & chicken Meal (a)	4.87	1 serve	4.83	4.83	4.83	4.83	4.83	4.83

12 Miscellaneous goods and services

Paper Sofan deluxe ply Toilet Paper	8.52	250 sheet:	1.04	1.03	1.03	1.01	1.04	1.06
Hair Gel	4.59	1124ml	4.36	4.40	4.43	4.51	4.46	4.57
Price for Storage of remains (a)	4.41	per day	60.00	60.00	60.00	60.00	60.00	60.00
Basic Casket (a)	4.41	each	1966.67	1966.67	1966.67	1966.67	1966.67	1966.67
Standard Embalming (a)	4.41	1 person	1500.00	1500.00	1500.00	1500.00	1500.00	1500.00
Toilet soap (a)	4.38	90g	1.88	1.89	1.84	1.96	1.96	1.95
Diapers (a)	4.19	5kg-10kg	9.21	9.14	9.13	8.49	8.33	8.33

Source : Samoa Bureau Statistics

(a) : New commodity from February 2016

(P) : Provisional figures

Note : Please note unit of conversion was in pound's (lb's) but been converted into kilograms (kg)

Table 4. IMPORTED GOODS COMPONENT OF THE CONSUMER PRICE INDEX
(Base Period : Average Prices February 2016 = 100)

Group	All Items	Food and Non Alcoholic Beverages	Alcoholic Beverages, Tobacco and Narcotics	Clothing and Footwear	Housing, Water, Electricity, Gas and other Fuels	Furnishings, Household Equipment and Maintenance	Health	Transport	Communication	Recreation and Culture	Education	Restaurants	Miscellaneous goods and services
<i>Weights</i>	494.7	269.1	23.8	15.2	28.3	26.9	2.5	88.6	<i>n.a</i>	5.6	<i>n.a</i>	<i>n.a</i>	34.7
<i>Ave - 2017</i>	107.3	110.1	110.0	97.0	97.6	98.9	91.7	111.2		90.0			97.1
<i>Ave - 2018</i>	111.9	113.8	113.5	96.1	100.6	97.6	94.3	124.0		92.0			96.6
<i>Ave - 2019</i>	111.1	114.5	118.3	93.7	100.8	95.8	97.9	117.3		87.9			96.7
2019													
April	109.3	112.4	119.6	95.1	100.5	94.5	97.5	113.4		89.3			96.9
May	110.6	112.7	119.3	95.5	101.2	92.6	97.5	120.3		87.3			96.9
June	111.9	113.5	119.3	96.3	101.2	95.2	97.5	124.2		86.2			95.9
July	113.4	117.0	119.7	91.2	101.5	96.9	97.5	122.0		86.2			96.2
August	112.8	118.5	118.2	91.2	100.0	96.5	97.5	114.9		86.2			96.8
September	113.8	119.1	118.1	91.3	100.7	96.8	97.5	118.8		86.2			96.2
October	113.5	118.8	117.9	92.4	100.8	96.3	97.5	118.1		86.2			96.2
November	113.7	118.1	118.7	93.4	101.3	96.9	97.5	120.5		88.7			96.1
December	112.4	116.3	117.8	93.4	101.0	96.3	97.5	118.8		88.7			97.2
2020													
January	111.5	113.8	117.8	93.4	101.0	96.3	97.5	121.4		88.7			96.9
February	113.8	118.1	117.8	93.4	101.3	97.2	97.5	120.8		88.7			96.5
March	114.8	120.7	117.4	93.1	100.3	97.3	97.5	119.2		88.7			96.8
April (P)	111.6	116.0	117.4	93.1	98.0	97.8	97.5	115.8		87.0			97.9
<u>Percentage Change (P)</u>													
Apr 2020 over Mar 2020	-2.8%	-3.9%	0.0%	0.0%	-2.3%	0.5%	0.0%	-2.8%		-1.9%			1.2%
Apr 2020 over Apr 2019	2.1%	3.3%	-1.9%	-2.1%	-2.5%	3.5%	0.0%	2.1%		-2.6%			1.1%

Source : Samoa Bureau Statistics

(P) : Provisional figures

Note : n.a. Not applicable

Table 5. IMPORTED ITEMS UNDERLYING INDEX

(Base Period : Average Prices February 2016 = 100)

Group	All Items	Food and Non Alcoholic Beverages	Alcoholic Beverages, Tobacco and Narcotics	Clothing and Footwear	Housing, Water , Electricity, Gas and other Fuels	Furnishings, Household Equipment and Maintenance	Health	Transport	Communication	Recreation and Culture	Education	Restaurants	Miscellaneous goods and services
Weights	401.2	269.1	n.a	15.2	24.2	26.9	2.5	23.0	n.a	5.6	n.a	n.a	34.7
Ave - 2017	106.0	110.1		97.0	93.8	98.9	91.7	104.5		90.0			97.1
Ave - 2018	108.8	113.8		96.1	93.4	97.6	94.3	111.2		92.0			96.6
Ave - 2019	108.9	114.5		93.7	94.6	95.8	97.9	108.1		87.9			96.7
2019													
April	107.5	112.4		95.1	94.6	94.5	97.5	108.3		89.3			96.9
May	107.6	112.7		95.5	94.6	92.6	97.5	108.3		87.3			96.9
June	108.2	113.5		96.3	94.1	95.2	97.5	108.3		86.2			95.9
July	110.5	117.0		91.2	94.5	96.9	97.5	108.3		86.2			96.2
August	111.5	118.5		91.2	94.5	96.5	97.5	108.3		86.2			96.8
September	111.9	119.1		91.3	94.4	96.8	97.5	109.2		86.2			96.2
October	111.8	118.8		92.4	94.8	96.3	97.5	109.2		86.2			96.2
November	111.4	118.1		93.4	94.8	96.9	97.5	109.2		88.7			96.1
December	110.1	116.3		93.4	94.9	96.3	97.5	106.7		88.7			97.2
2020													
January	108.4	113.8		93.4	94.8	96.3	97.5	106.7		88.7			96.9
February	111.3	118.1		93.4	94.6	97.2	97.5	106.7		88.7			96.5
March	113.0	120.7		93.1	94.0	97.3	97.5	106.7		88.7			96.8
April (P)	110.2	116.0		93.1	93.6	97.8	97.5	110.6		87.0			97.9
<u>Percentage Change (P)</u>													
Apr 2020 over Mar 2020	-2.5%	-3.9%		0.0%	-0.4%	0.5%	0.0%	3.7%		-1.9%			1.2%
Apr 2020 over Apr 2019	4.7%	6.7%		-1.8%	-0.8%	2.6%	0.0%	-0.6%		-0.4%			-0.4%

Source : Samoa Bureau Statistics

(P) : Provisional figures

Note : n.a. Not applicable

Table 6. LOCAL GOODS COMPONENT OF THE CONSUMER PRICE INDEX
(Base Period : Average Prices February 2016 = 100)

Group	All Items	Food and Non Alcoholic Beverages	Alcoholic Beverages, Tobacco and Narcotics	Clothing and Footwear	Housing, Water, Electricity, Gas and other Fuels	Furnishings, Household Equipment and Maintenance	Health	Transport	Communication	Recreation and Culture	Education	Restaurants	Miscellaneous goods and services
Weights	505.3	134.6	104.6	6.0	91.3	3.9	2.2	59.9	51.5	0.4	19.7	22.4	8.8
Ave - 2017	98.6	95.0	107.1	95.7	90.6	100.1	100.0	101.6	101.2	100.0	97.9	98.3	102.3
Ave - 2018	102.6	105.3	112.0	93.3	88.1	100.3	100.0	101.7	103.3	100.0	110.4	99.0	102.3
Ave - 2019	105.5	107.3	116.5	93.8	93.2	100.3	102.5	102.3	104.2	100.0	113.5	103.3	102.3
2019													
April	104.4	106.2	115.6	94.6	91.3	100.3	103.0	100.5	105.2	100.0	110.6	103.4	102.3
May	105.5	109.4	115.1	94.7	91.3	100.3	103.0	102.4	104.3	100.0	114.9	103.4	102.3
June	105.2	106.5	115.3	94.7	91.3	100.3	103.0	105.7	104.3	100.0	114.9	103.4	102.3
July	107.0	110.1	117.2	94.7	97.3	100.3	103.0	100.4	104.3	100.0	114.9	103.4	102.3
August	107.4	111.1	117.5	94.7	97.3	100.3	103.0	101.2	104.3	100.0	114.9	103.4	102.3
September	106.6	107.5	117.3	94.2	97.3	100.3	103.0	102.6	104.3	100.0	114.9	103.4	102.3
October	106.4	106.1	117.6	92.1	97.3	100.3	103.0	104.5	104.3	100.0	114.9	103.4	102.3
November	106.0	103.6	117.2	92.1	96.7	100.3	103.0	108.1	104.3	100.0	114.9	103.4	102.3
December	105.4	104.1	117.2	93.3	96.7	100.3	103.0	99.7	104.3	100.0	114.9	108.3	102.3
2020													
January	108.0	110.5	120.1	92.9	98.6	100.3	103.0	99.6	104.2	100.0	114.9	108.3	102.3
February	107.3	109.0	119.7	93.7	96.0	100.3	103.0	101.4	104.2	100.0	114.9	108.3	102.3
March	107.3	109.9	119.7	94.4	95.4	100.3	103.0	100.8	104.2	100.0	114.9	108.3	102.3
April (P)	104.2	107.5	119.3	94.4	82.6	100.3	103.0	99.9	104.2	100.0	114.9	108.3	102.3
Percentage Change (P)													
Apr 2020 over Mar 2020	-2.9%	-2.2%	-0.4%	0.0%	-13.4%	0.0%	0.0%	-0.9%	0.0%	0.0%	0.0%	0.0%	0.0%
Apr 2020 over Apr 2019	-0.2%	1.2%	3.2%	-0.3%	-9.5%	0.0%	0.0%	-0.6%	-0.9%	0.0%	3.8%	4.7%	0.0%

Source : Samoa Bureau Statistics

(P) : Provisional figures

Note : n.a. Not applicable

Table 7. LOCAL ITEMS UNDERLYING INDEX

(Base Period : Average Prices February 2016 = 100)

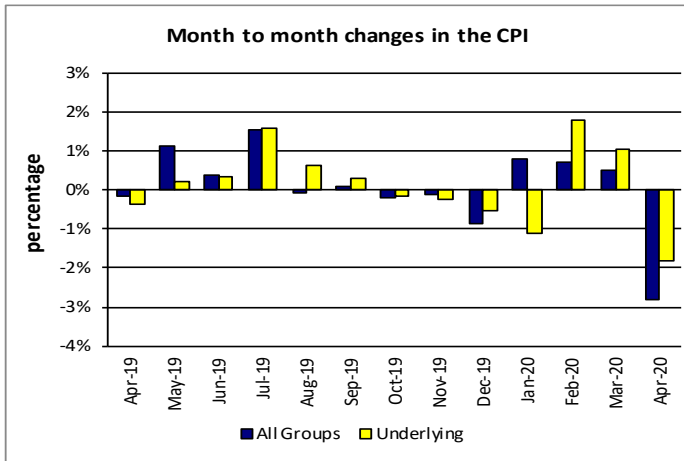
Group	All Items	Food and Non Alcoholic Beverages	Alcoholic Beverages, Tobacco and Narcotics	Clothing and Footwear	Housing, Water, Electricity, Gas and other Fuels	Furnishings, Household Equipment and Maintenance	Health	Transport	Communication	Recreation and Culture	Education	Restaurants	Miscellaneous goods and services
Weights	185.5	76.1	n.a	6.0	n.a	3.9	1.0	3.4	51.5	n.a	12.3	22.4	8.8
Ave - 2017	99.9	100.1		95.7		100.1	100.0	101.8	101.2		96.7	98.3	102.3
Ave - 2018	101.9	100.3		93.3		100.3	100.0	108.3	103.3		114.0	99.0	102.3
Ave - 2019	103.6	101.6		93.8		100.3	105.2	108.6	104.2		118.5	103.3	102.3
2019													
April	103.3	101.0		94.6		100.3	106.3	108.6	105.2		113.9	103.4	102.3
May	103.8	101.7		94.7		100.3	106.3	108.6	104.3		120.6	103.4	102.3
June	103.6	101.2		94.7		100.3	106.3	108.6	104.3		120.6	103.4	102.3
July	103.9	102.0		94.7		100.3	106.3	108.6	104.3		120.6	103.4	102.3
August	103.9	101.9		94.7		100.3	106.3	108.6	104.3		120.6	103.4	102.3
September	104.0	102.1		94.2		100.3	106.3	108.6	104.3		120.6	103.4	102.3
October	103.8	102.0		92.1		100.3	106.3	108.6	104.3		120.6	103.4	102.3
November	103.9	102.1		92.1		100.3	106.3	108.6	104.3		120.6	103.4	102.3
December	104.7	102.5		93.3		100.3	106.3	108.6	104.3		120.6	108.3	102.3
2020													
January	104.6	102.5		92.9		100.3	106.3	108.6	104.2		120.6	108.3	102.3
February	104.5	102.0		93.7		100.3	106.3	108.6	104.2		120.6	108.3	102.3
March	104.4	101.7		94.4		100.3	106.3	108.6	104.2		120.6	108.3	102.3
April (P)	104.2	101.3		94.4		100.3	106.3	108.6	104.2		120.6	108.3	102.3
Percentage Change (P)													
Apr 2020 over Mar 2020	-0.1%	-0.4%		0.0%		0.0%	0.0%	0.0%	0.0%		0.0%	0.0%	0.0%
Apr 2020 over Apr 2019	0.9%	0.4%		-0.3%		0.0%	0.0%	0.0%	-0.9%		5.9%	4.7%	0.0%

Source : Samoa Bureau Statistics

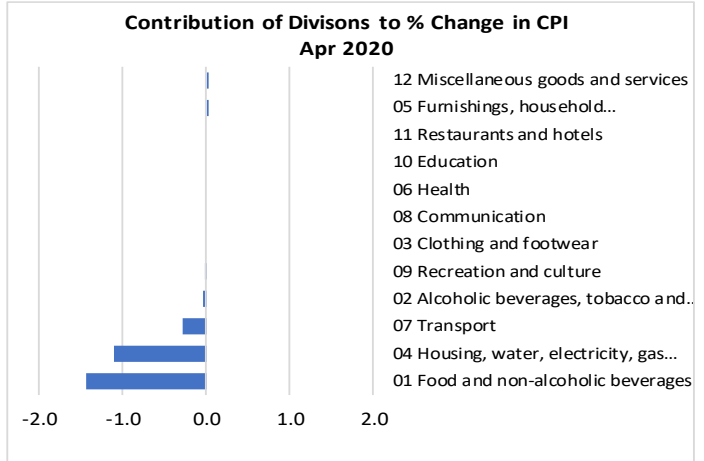
(P) : Provisional figures

Note : n.a. Not applicable

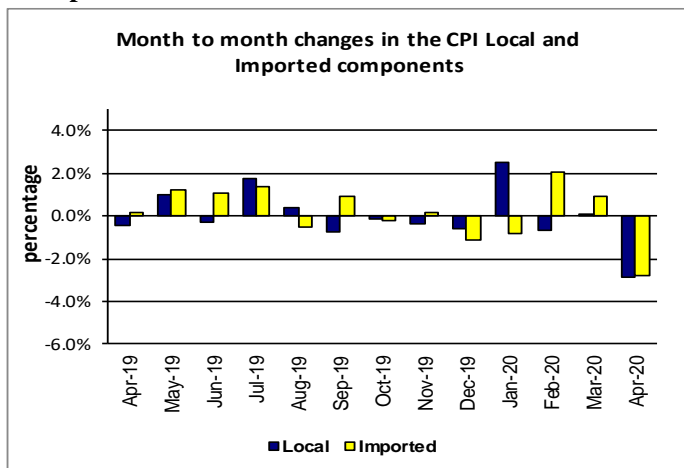
Graph.5



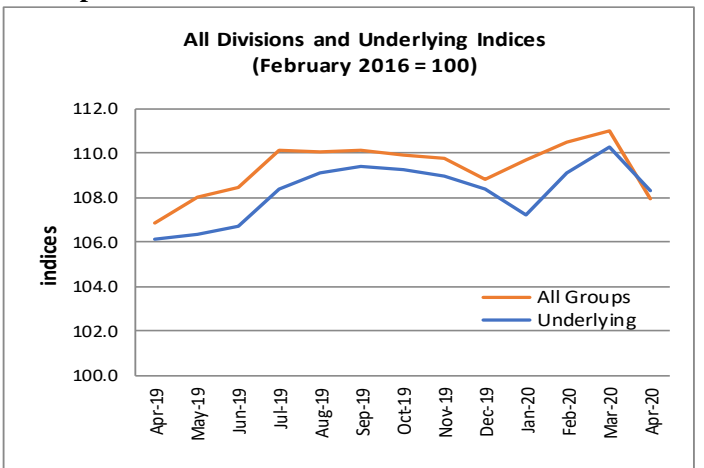
Graph.6



Graph.7



Graph.8



Graph.9

