

Please address all correspondence
To Government Statistician
In reply, please quote the file reference



File Ref: CPI 2/2020

GOVERNMENT OF SAMOA

SAMOA BUREAU OF STATISTICS

CONSUMER PRICE INDEX FEBRUARY 2020

Key findings:

The Consumer Price Index for February 2020 increased by 0.7 percent compared to the previous month.

- The Food and Non Alcoholic Beverages index increased by 2.1 percent.
- The Housing, Water, Electricity, Gas and other Fuels index decreased by 1.9 percent.
- The Average Annual Inflation for the year ended February 2020 was 1.9 percent.

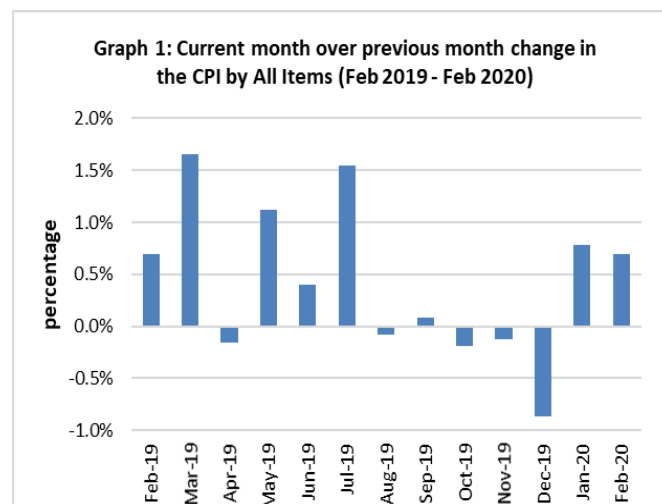
In the year to February 2020, the CPI rose 5.0 percent.

SUMMARY

The Consumer Price Index for February 2020 was 0.7 percent higher than January 2020, and was 5.0 percent higher than February 2019.

The increase of the Imported Goods Component by 2.0 percent from the previous month was due to higher prices for imported food, washing powder and mosquito coil, which were also the main contributors to the increase of 0.7 percent in the All Items Consumer Price Index.

The Local Goods Component registered a decrease of 0.7 percent from the previous month. Graph 1 shows the month to month percentage changes in the Consumer Price Index by all Divisions from February 2019 to February 2020.

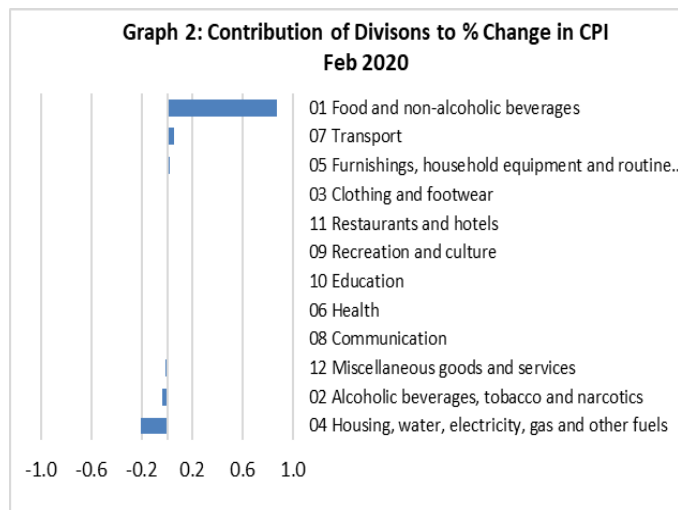


Source : Samoa Bureau of Statistics

Total All Divisions Contribution

As depicted in Graph 2, Food and Non Alcoholic Beverages division, with a positive contribution of 0.87 percent, was the main contributor to the overall increase of 0.7 percent in the All Division Consumer Price Index.

On the other hand, there were offsetting negative contributions from Housing, Water, Electricity, Gas and other Fuels with 0.21 percent decrease.



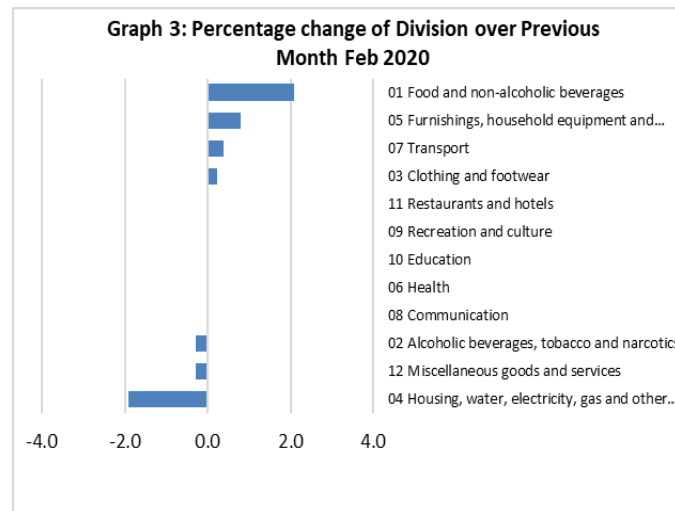
Source : Samoa Bureau of Statistics

Consumer Price Index (% Change)

The 0.7 percent increase in the Overall Index was mainly due to an increase of 2.1 percent in the Food and Non Alcoholic Beverages index. The Furnishing, Household Equipment and Maintenance index also recorded an increase of 0.8 percent, while Transport and Clothing and Footwear indices registered increases of 0.4 and 0.2 percent respectively.

On the contrary, decreases were recorded for other divisions namely Housing, Water, Electricity, Gas and other Fuels with 1.9 percent, Alcoholic Beverages and Tobacco with 0.3 and Miscellaneous Goods and Services with 0.3 percent.

No changes were recorded for the Health, Communication, Recreation and Culture, Education and Restaurants indices. Graphically presented in Graph 3 is the February 2020 percentage change for all divisions from January 2020.



Source : Samoa Bureau of Statistics

Imported Goods Component

The Imported Goods Component of the Consumer Price Index registered an increase of 2.0 percent when compared to the previous month. This increase was mainly due to higher prices recorded for imported food, washing powder, mosquito coil and fuel (diesel and kerosene).

Local Goods Component

Decreased prices recorded for electricity (kwh), bread, taro, fresh fish (piece, string and large), coconut and taamu have resulted in the 0.7 percent decrease in the local Goods Component.

Food and Non Alcoholic Beverages Index

An increase of 2.1 percent in the Food and Non Alcoholic Beverages index was a reflection of the higher prices recorded for chicken leg quarter, raw sugar, mutton flap, chinese cabbage, koko samoa, banana, potatoes, cucumber, mutton neck, tomato and head cabbage.

Furnishings, Household Equipment, and Maintenance Index

The Furnishing, Household, Equipment and Maintenance index recorded an increase of 0.8 percent due to increased prices recorded for washing powder, mosquito coil and clothing chest.

Transport Index

Higher prices recorded for fuel (diesel) and airline fare (Apia-Auckland-Apia) is reflected in the 0.4 percent increase in the Transport index.

Housing, Water, Electricity, Gas and other Fuels Index

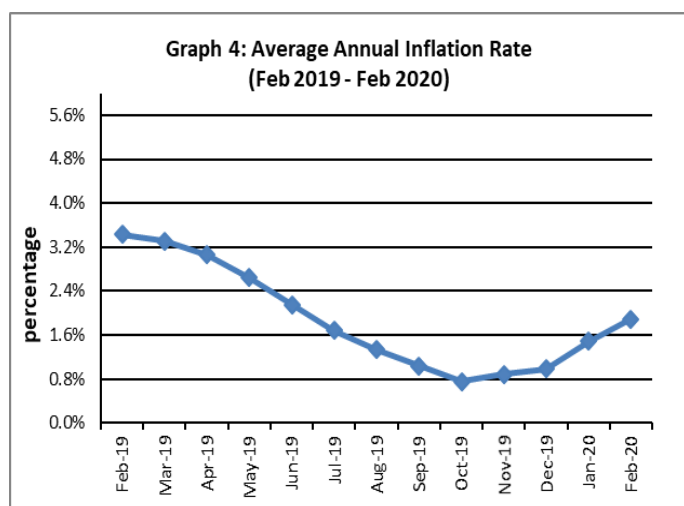
The 1.9 percent decrease in the Housing, Water, Electricity, Gas and other Fuels index was a result of the lower prices recorded for electricity (kwh) and paint (high gloss).

Underlying Indices ^{1/}

The All Items Underlying Index for February 2020 registered an increase of 1.8 percent when compared to January 2020, and an increase of 4.1 percent when compared to February 2019. The Imported Items Underlying Index registered an increase of 2.7 percent, while Local Items Underlying Index recorded a decrease of 0.2 percent from the previous month.

Inflation Rate

The average annual inflation rate for the year ended February 2020 was 1.9 percent. For the twelve months ending February 2019 the inflation rate was 3.4 percent. Presented in Graph 4 is the Average annual inflation rate (February 2020 - February 2019).



Source : Samoa Bureau of Statistics

The attached Tables and Graphs provide the user with more detailed analysis.

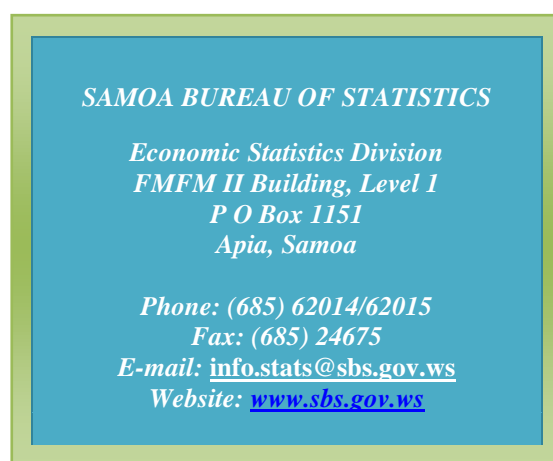
Technical Notes:

The Consumer Price (CPI) measures the rate of inflation for Samoa. It is designed to measure the change in prices for the goods purchased by households in Samoa. The CPI measures the change in prices by comparing the prices for a basket of goods and services at the collection period with the price for the same goods in a base period.

The basket of goods that is priced is based on the average expenditures of households as recorded in the Household Income and Expenditure Survey (HIES). The HIES survey identifies how much households spend on different items. The more households spend on an item on average, the more important it is to the price index, and the higher the weight in the index.

^{1/} Monthly movements in the 'headline' CPI series can be volatile. This volatility reflects price changes in particular items that may be due, among other factors, to fluctuations in commodity markets and agricultural conditions, policy changes, or seasonal or infrequent price resetting.

Underlying inflation is a measure of inflation that excludes certain items that face volatile price movements. Underlying inflation eliminates products that can have temporary price shocks because these shocks can diverge from the overall trend of inflation and give a false measure of inflation.



Date of release: 13th March 2020

The next Consumer Price Index will be released on 9th April 2020.

Taiaopo Faumuina
ACTING GOVERNMENT STATISTICIAN/(CEO)

Table 1. CONSUMER PRICE INDEX.

(Base Period : Average Prices February 2016 = 100)

| Group | All Items | Food and Non Alcoholic Beverages | Alcoholic Beverages, Tobacco and Narcotics | Clothing and Footwear | Housing, Water, Electricity, Gas and other Fuels | Furnishings, Household Equipment, and Maintenance | Health | Transport | Communication | Recreation and Culture | Education | Restaurants | Miscellaneous goods and services |
|-------------------------------------|---------------|----------------------------------|--|-----------------------|--|---|------------|--------------|---------------|------------------------|-------------|-------------|----------------------------------|
| <i>Weights</i> | 1000.0 | 403.7 | 128.4 | 21.2 | 119.6 | 30.8 | 4.6 | 148.5 | 51.5 | 6.1 | 19.7 | 22.4 | 43.5 |
| Ave - 2017 | 102.9 | 105.1 | 107.6 | 96.6 | 92.2 | 99.1 | 95.6 | 107.3 | 101.2 | 90.7 | 97.9 | 98.3 | 98.1 |
| Ave - 2018 | 107.2 | 111.0 | 112.3 | 95.3 | 91.0 | 98.0 | 97.0 | 115.0 | 103.3 | 92.6 | 110.4 | 99.0 | 97.8 |
| Ave - 2019 | 108.3 | 112.1 | 116.8 | 93.8 | 95.0 | 96.4 | 100.0 | 111.3 | 104.2 | 88.7 | 113.5 | 103.3 | 97.8 |
| 2019 | | | | | | | | | | | | | |
| February | 105.3 | 108.3 | 116.3 | 95.2 | 89.0 | 96.2 | 99.9 | 107.5 | 102.9 | 91.0 | 110.5 | 100.6 | 98.5 |
| March | 107.0 | 111.3 | 116.8 | 94.7 | 93.3 | 95.5 | 100.1 | 106.4 | 105.2 | 89.8 | 110.6 | 102.8 | 98.3 |
| April | 106.8 | 110.3 | 116.3 | 95.0 | 93.4 | 95.2 | 100.1 | 108.2 | 105.2 | 90.1 | 110.6 | 103.4 | 98.0 |
| May | 108.0 | 111.6 | 115.9 | 95.3 | 93.6 | 93.6 | 100.1 | 113.1 | 104.3 | 88.2 | 114.9 | 103.4 | 98.0 |
| June | 108.5 | 111.2 | 116.0 | 95.9 | 93.6 | 95.8 | 100.1 | 116.8 | 104.3 | 87.1 | 114.9 | 103.4 | 97.2 |
| July | 110.1 | 114.7 | 117.7 | 92.2 | 98.3 | 97.4 | 100.1 | 113.3 | 104.3 | 87.1 | 114.9 | 103.4 | 97.4 |
| August | 110.1 | 116.0 | 117.7 | 92.2 | 97.9 | 97.0 | 100.1 | 109.4 | 104.3 | 87.1 | 114.9 | 103.4 | 97.9 |
| September | 110.1 | 115.3 | 117.5 | 92.1 | 98.1 | 97.3 | 100.1 | 112.3 | 104.3 | 87.1 | 114.9 | 103.4 | 97.5 |
| October | 109.9 | 114.6 | 117.7 | 92.3 | 98.1 | 96.8 | 100.1 | 112.6 | 104.3 | 87.1 | 114.9 | 103.4 | 97.5 |
| November | 109.8 | 113.2 | 117.5 | 93.0 | 97.8 | 97.3 | 100.1 | 115.5 | 104.3 | 89.5 | 114.9 | 103.4 | 97.4 |
| December | 108.9 | 112.3 | 117.3 | 93.4 | 97.7 | 96.8 | 100.1 | 111.1 | 104.3 | 89.5 | 114.9 | 108.3 | 98.2 |
| 2020 | | | | | | | | | | | | | |
| January | 109.7 | 112.7 | 119.7 | 93.3 | 99.1 | 96.8 | 100.1 | 112.6 | 104.2 | 89.5 | 114.9 | 108.3 | 98.0 |
| February (P) | 110.5 | 115.1 | 119.3 | 93.5 | 97.3 | 97.6 | 100.1 | 113.0 | 104.2 | 89.5 | 114.9 | 108.3 | 97.7 |
| <u>Percentage Change (P)</u> | | | | | | | | | | | | | |
| Feb 2020 | | | | | | | | | | | | | |
| over | 0.7% | 2.1% | -0.3% | 0.2% | -1.9% | 0.8% | 0.0% | 0.4% | 0.0% | 0.0% | 0.0% | 0.0% | -0.3% |
| Jan 2020 | | | | | | | | | | | | | |
| Feb 2020 | | | | | | | | | | | | | |
| over | 5.0% | 6.2% | 2.6% | -1.8% | 9.3% | 1.5% | 0.2% | 5.1% | 1.3% | -1.6% | 3.9% | 7.6% | -0.8% |
| Feb 2019 | | | | | | | | | | | | | |

Source : Samoa Bureau Statistics

(P) : Provisional figures

Note : n.a. Not applicable

■ Revised Figures

Table 2. ALL ITEMS UNDERLYING INDEX

(Base Period : Average Prices February 2016 = 100)

| Group | All Items | Food and Non Alcoholic Beverages | Alcoholic Beverages, Tobacco and Narcotics | Clothing and Footwear | Housing, Water, Electricity, Gas and other Fuels | Furnishings, Household Equipment, and Maintenance | Health | Transport | Communication | Recreation and Culture | Education | Restaurants | Miscellaneous goods and services |
|-------------------------------------|--------------|----------------------------------|--|-----------------------|--|---|------------|-------------|---------------|------------------------|-------------|-------------|----------------------------------|
| <i>Weights</i> | 586.7 | 345.3 | <i>n.a</i> | 21.2 | 24.2 | 30.8 | 3.5 | 26.4 | 51.5 | 5.6 | 12.3 | 22.4 | 43.5 |
| <i>Ave - 2017</i> | 104.1 | 107.9 | | 96.6 | 93.8 | 99.1 | 94.2 | 104.2 | 101.2 | 90.0 | 96.7 | 98.3 | 98.1 |
| <i>Ave - 2018</i> | 106.6 | 110.8 | | 95.3 | 93.4 | 98.0 | 96.0 | 110.8 | 103.3 | 92.0 | 114.0 | 99.0 | 97.8 |
| <i>Ave - 2019</i> | 107.2 | 111.6 | | 93.8 | 94.6 | 96.4 | 100.1 | 108.1 | 104.2 | 87.9 | 118.5 | 103.3 | 97.8 |
| 2019 | | | | | | | | | | | | | |
| February | 104.8 | 108.0 | | 95.2 | 94.9 | 96.2 | 99.8 | 106.5 | 102.9 | 90.3 | 113.9 | 100.6 | 98.5 |
| March | 106.5 | 110.5 | | 94.7 | 94.7 | 95.5 | 100.1 | 107.4 | 105.2 | 89.0 | 113.9 | 102.8 | 98.3 |
| April | 106.1 | 109.8 | | 95.0 | 94.6 | 95.2 | 100.1 | 108.4 | 105.2 | 89.3 | 113.9 | 103.4 | 98.0 |
| May | 106.4 | 110.3 | | 95.3 | 94.6 | 93.6 | 100.1 | 108.4 | 104.3 | 87.3 | 120.6 | 103.4 | 98.0 |
| June | 106.7 | 110.8 | | 95.9 | 94.1 | 95.8 | 100.1 | 108.4 | 104.3 | 86.2 | 120.6 | 103.4 | 97.2 |
| July | 108.4 | 113.7 | | 92.2 | 94.5 | 97.4 | 100.1 | 108.4 | 104.3 | 86.2 | 120.6 | 103.4 | 97.4 |
| August | 109.1 | 114.9 | | 92.2 | 94.5 | 97.0 | 100.1 | 108.4 | 104.3 | 86.2 | 120.6 | 103.4 | 97.9 |
| September | 109.4 | 115.4 | | 92.1 | 94.4 | 97.3 | 100.1 | 109.1 | 104.3 | 86.2 | 120.6 | 103.4 | 97.5 |
| October | 109.3 | 115.1 | | 92.3 | 94.8 | 96.8 | 100.1 | 109.1 | 104.3 | 86.2 | 120.6 | 103.4 | 97.5 |
| November | 109.0 | 114.5 | | 93.0 | 94.8 | 97.3 | 100.1 | 109.1 | 104.3 | 88.7 | 120.6 | 103.4 | 97.4 |
| December | 108.4 | 113.3 | | 93.4 | 94.9 | 96.8 | 100.1 | 106.9 | 104.3 | 88.7 | 120.6 | 108.3 | 98.2 |
| 2020 | | | | | | | | | | | | | |
| January | 107.2 | 111.3 | | 93.3 | 94.8 | 96.8 | 100.1 | 106.9 | 104.2 | 88.7 | 120.6 | 108.3 | 98.0 |
| February (P) | 109.1 | 114.5 | | 93.5 | 94.6 | 97.6 | 100.1 | 106.9 | 104.2 | 88.7 | 120.6 | 108.3 | 97.7 |
| <u>Percentage Change (P)</u> | | | | | | | | | | | | | |
| Feb 2020 | | | | | | | | | | | | | |
| over | 1.8% | 2.9% | | 0.2% | -0.3% | 0.8% | 0.0% | 0.0% | 0.0% | 0.0% | 0.0% | 0.0% | -0.3% |
| Jan 2020 | | | | | | | | | | | | | |
| Feb 2020 | | | | | | | | | | | | | |
| over | 4.1% | 6.0% | | -1.8% | -0.4% | 1.5% | 0.3% | 0.4% | 1.3% | -1.7% | 5.9% | 7.6% | -0.8% |
| Feb 2019 | | | | | | | | | | | | | |

Source : Samoa Bureau Statistics

(P) : Provisional figures

Note : n.a. Not applicable

Table 3. AVERAGE RETAIL PRICES OF SELECTED COMMODITIES

| Commodities | Wt | Unit | 2018 | | 2019 | | 2020 | |
|--|------|-----------|--------|--------|--------|--------|--------|---------|
| | | | Dec | Jan | Feb | Dec | Jan | Feb (P) |
| 01 Food and non-alcoholic beverages | | | | | | | | |
| Leg Quarters Chicken | 62.2 | kg | 3.44 | 3.13 | 3.74 | 4.70 | 4.41 | 4.81 |
| Raw Sugar | 21.3 | kg | 2.69 | 2.69 | 2.76 | 2.38 | 2.39 | 2.55 |
| Bread | 17.2 | loaf | 1.68 | 1.68 | 1.70 | 1.70 | 1.70 | 1.67 |
| Corned Beef (a) | 15.9 | 12 oz | 8.15 | 8.13 | 8.13 | 8.03 | 8.03 | 8.03 |
| Taro | 15.2 | kg | 3.03 | 2.99 | 2.44 | 2.60 | 2.72 | 2.41 |
| Re-packed medium grain rice | 13.4 | kg | 3.23 | 3.18 | 3.10 | 2.95 | 2.90 | 2.87 |
| Prepacked medium grain rice (a) | 13.4 | 907g | 3.02 | 3.02 | 3.10 | 2.82 | 2.82 | 2.82 |
| Canned fish betw een \$3.00 and \$3.99 Natural Oil | 12.7 | 15 oz | 3.50 | 3.47 | 3.42 | 3.39 | 3.31 | 3.40 |
| Bongo | 10.2 | 20grms | 0.81 | 0.81 | 0.81 | 0.80 | 0.80 | 0.80 |
| Keke Saina Biscuits (a) | 9.2 | pkt 10 | 6.25 | 6.29 | 6.39 | 6.38 | 6.38 | 6.38 |
| Tip Top Ice Cream (a) | 9.2 | 2 ltr | 15.32 | 15.32 | 15.32 | 15.33 | 15.33 | 15.33 |
| Ramen maggie | 9.0 | 85gms | 1.12 | 1.11 | 1.08 | 1.07 | 1.07 | 1.08 |
| Fish (Piece) | 7.9 | kg | 25.39 | 19.02 | 16.08 | 18.98 | 23.28 | 21.27 |
| Butter Anchor | 7.7 | 454g | 13.54 | 13.61 | 13.96 | 15.77 | 15.77 | 15.77 |
| Round Pancake (a) | 7.5 | sml | 0.15 | 0.15 | 0.15 | 0.15 | 0.15 | 0.15 |
| Mutton Flaps | 6.6 | kg | 22.03 | 22.34 | 22.02 | 21.49 | 23.09 | 23.24 |
| Canned fish \$4:00 or over N/Oil | 6.4 | 15 oz | 4.85 | 4.88 | 5.22 | 4.98 | 4.98 | 4.81 |
| Canned fish under \$3.00 in N/Oil | 6.4 | 15 oz | 2.53 | 2.53 | 2.52 | 2.62 | 2.62 | 2.62 |
| Wings Turkey | 6.3 | kg | 6.08 | 6.08 | 6.25 | 8.43 | 7.85 | 7.45 |
| Fish (string) | 6.0 | kg | 10.94 | 11.68 | 11.15 | 10.61 | 12.72 | 11.25 |
| Fish (large) | 6.0 | kg | 18.60 | 21.00 | 16.58 | 16.54 | 18.57 | 17.54 |
| 02 Alcoholic beverages, tobacco and narcotics | | | | | | | | |
| Lager Beer | 37.9 | 355 mls | 3.55 | 3.60 | 3.64 | 3.58 | 3.67 | 3.63 |
| Pall Mall Filter Cigarettes (Red) | 24.3 | 20 rolls | 13.00 | 13.40 | 13.40 | 13.80 | 14.20 | 14.20 |
| Pall Mall Menthol Cigarettes (Green) | 24.3 | 20 rolls | 13.00 | 13.40 | 13.40 | 13.80 | 14.20 | 14.20 |
| Beer (a) | 16.3 | 330 mls | 3.35 | 3.36 | 3.36 | 3.36 | 3.36 | 3.36 |
| Winfield Tobacco (a) | 12.6 | packet | 15.00 | 15.00 | 15.00 | 15.00 | 15.00 | 15.00 |
| 03 Clothing and footwear | | | | | | | | |
| Uniform le Faitaga College boys | 4.3 | size 8-10 | 31.33 | 29.33 | 29.67 | 29.67 | 29.67 | 29.67 |
| Uniform Pa'ave (a) | 3.7 | size 7 | 34.67 | 34.67 | 35.33 | 32.00 | 32.00 | 32.00 |
| 04 Housing, water, electricity, gas and other fuels | | | | | | | | |
| Electricity / Cashpow er / kw h 1- 100 / total cost per | 50.6 | kw h | 0.58 | 0.58 | 0.58 | 0.66 | 0.69 | 0.65 |
| Reservoir treated Water | 28.5 | 15-40 m3 | 1.40 | 1.40 | 1.40 | 1.67 | 1.67 | 1.67 |
| Liquid gas | 15.8 | 9kg | 62.00 | 62.00 | 62.00 | 62.00 | 62.00 | 62.00 |
| Government house Rent | 12.2 | 2 b/room | 650.00 | 650.00 | 650.00 | 650.00 | 650.00 | 650.00 |
| 05 Furnishings, household equipment and routine household maintenance | | | | | | | | |
| Washing powder (a) | 6.3 | 200g | 1.72 | 1.73 | 1.73 | 1.86 | 1.89 | 1.93 |
| Soap yellow Washing soap | 5.9 | bar | 2.85 | 2.90 | 2.75 | 2.81 | 2.76 | 2.75 |
| Mosquito coil | 4.4 | 10 coil | 1.28 | 1.30 | 1.20 | 1.20 | 1.20 | 1.23 |

06 Health

| | | | | | | | | |
|----------------------------|-----|--------|-------|-------|-------|-------|-------|-------|
| Amoxicillin mg Tablets (a) | 2.5 | 500 mg | 7.92 | 7.92 | 7.92 | 7.58 | 7.58 | 7.58 |
| Hospital Charge | 1.1 | night | 22.50 | 22.50 | 22.50 | 22.50 | 22.50 | 22.50 |

07 Transport

| | | | | | | | | |
|--------------------------------|------|-------------|---------|---------|---------|---------|---------|---------|
| Petrol | 60.8 | 1 ltr | 2.89 | 2.57 | 2.41 | 2.66 | 2.74 | 2.72 |
| Taxi Fare PO Motootua Hosp | 8.2 | per trip | 4.80 | 4.80 | 4.80 | 4.80 | 4.80 | 4.80 |
| Taxi Fares PO Malua | 8.2 | per trip | 31.30 | 31.30 | 31.30 | 31.30 | 31.30 | 31.30 |
| Taxi Fares PO Falefa | 8.2 | per trip | 43.20 | 43.20 | 43.20 | 43.20 | 43.20 | 43.20 |
| Air Fares Fagalii Pago Fagalii | 6.8 | return trip | 395.00 | 395.00 | 395.00 | 395.00 | 395.00 | 395.00 |
| Air Fares Apia Auckland Apia | 6.8 | 1 month | 2035.67 | 1066.87 | 1507.83 | 1157.50 | 1147.85 | 1313.02 |

08 Communication

| | | | | | | | | |
|--|-------|------------|------|------|------|------|------|------|
| Calling per minute Rate cell phone (a) | 10.02 | per minute | 0.45 | 0.45 | 0.45 | 0.43 | 0.43 | 0.43 |
| Internet data bundles per mb Rate (a) | 10.02 | per mb | 0.25 | 0.25 | 0.25 | 0.25 | 0.25 | 0.25 |
| Calling per minute Rate cell phone (a) | 10.02 | per minute | 0.44 | 0.44 | 0.44 | 0.44 | 0.44 | 0.44 |
| Internet data bundles per mb Rate (a) | 10.02 | per mb | 0.20 | 0.20 | 0.20 | 0.20 | 0.20 | 0.20 |

09 Recreation and culture

| | | | | | | | | |
|------------------------|------|-----------|---------|---------|---------|---------|---------|---------|
| Television (a) | 2.30 | LCD | 966.00 | 968.83 | 968.83 | 861.00 | 861.00 | 861.00 |
| Exercise Book w arwick | 1.44 | 1B4 64 pa | 1.35 | 1.35 | 1.35 | 1.47 | 1.47 | 1.47 |
| Laptop (a) | 1.33 | each | 2878.60 | 2878.60 | 2878.60 | 2918.60 | 2918.60 | 2918.60 |

10 Education

| | | | | | | | | |
|--|------|-------------|--------|--------|--------|--------|--------|--------|
| Fees PTA Primary Y Urban Registration fees (a) | 7.23 | Year 6 | 82.50 | 82.50 | 82.50 | 82.50 | 82.50 | 82.50 |
| Fees PTA Secondary Y Urban Registration fees (a) | 5.11 | Year 10 | 52.00 | 52.00 | 50.00 | 58.00 | 58.00 | 58.00 |
| Fees Tertiary NUS registration School Fees | 3.79 | registratio | 320.00 | 320.00 | 320.00 | 322.00 | 322.00 | 322.00 |
| Fees Secondary Y Examination Fees (a) | 3.61 | Y12-13 | 25.50 | 25.50 | 25.50 | 25.50 | 25.50 | 25.50 |

11 Restaurants and hotels

| | | | | | | | | |
|-------------------------------|------|---------|------|------|------|------|------|------|
| Fish & Chip Meal | 7.79 | 1 serve | 9.17 | 9.17 | 9.17 | 9.17 | 9.17 | 9.17 |
| Curry & Chopsuey Meal | 4.87 | 1 serve | 3.33 | 3.33 | 3.33 | 4.67 | 4.67 | 4.67 |
| Chicken & Chips Meal (a) | 4.87 | 1 serve | 9.36 | 9.36 | 9.36 | 9.64 | 9.64 | 9.64 |
| Steam rice & chicken Meal (a) | 4.87 | 1 serve | 4.83 | 4.83 | 4.83 | 4.83 | 4.83 | 4.83 |

12 Miscellaneous goods and services

| | | | | | | | | |
|-------------------------------------|------|------------|---------|---------|---------|---------|---------|---------|
| Paper Sofan deluxe ply Toilet Paper | 8.52 | 250 sheet: | 1.01 | 1.01 | 1.04 | 1.01 | 1.01 | 1.01 |
| Hair Gel | 4.59 | 1124ml | 4.36 | 4.36 | 4.36 | 4.60 | 4.60 | 4.51 |
| Price for Storage of remains (a) | 4.41 | per day | 60.00 | 60.00 | 60.00 | 60.00 | 60.00 | 60.00 |
| Basic Casket (a) | 4.41 | each | 1966.67 | 1966.67 | 1966.67 | 1966.67 | 1966.67 | 1966.67 |
| Standard Embalming (a) | 4.41 | 1 person | 1500.00 | 1500.00 | 1500.00 | 1500.00 | 1500.00 | 1500.00 |
| Toilet soap (a) | 4.38 | 90g | 1.86 | 1.85 | 1.88 | 1.95 | 1.95 | 1.96 |
| Diapers (a) | 4.19 | 5kg-10kg | 9.21 | 9.21 | 9.21 | 8.99 | 8.63 | 8.49 |

Source : Samoa Bureau Statistics

(a) : New commodity from February 2016

(P) : Provisional figures

Note : Please note unit of conversion was in pound's (lb's) but been converted into kilograms (kg)


 Revised Figures

Table 4. IMPORTED GOODS COMPONENT OF THE CONSUMER PRICE INDEX
(Base Period : Average Prices February 2016 = 100)

| Group | All Items | Food and Non Alcoholic Beverages | Alcoholic Beverages, Tobacco and Narcotics | Clothing and Footwear | Housing, Water, Electricity, Gas and other Fuels | Furnishings, Household Equipment and Maintenance | Health | Transport | Communication | Recreation and Culture | Education | Restaurants | Miscellaneous goods and services |
|-------------------------------------|--------------|----------------------------------|--|-----------------------|--|--|------------|-------------|---------------|------------------------|------------|-------------|----------------------------------|
| <i>Weights</i> | 494.7 | 269.1 | 23.8 | 15.2 | 28.3 | 26.9 | 2.5 | 88.6 | <i>n.a</i> | 5.6 | <i>n.a</i> | <i>n.a</i> | 34.7 |
| <i>Ave - 2017</i> | 107.3 | 110.1 | 110.0 | 97.0 | 97.6 | 98.9 | 91.7 | 111.2 | | 90.0 | | | 97.1 |
| <i>Ave - 2018</i> | 111.9 | 113.8 | 113.5 | 96.1 | 100.6 | 97.6 | 94.3 | 124.0 | | 92.0 | | | 96.6 |
| <i>Ave - 2019</i> | 111.1 | 114.5 | 118.3 | 93.7 | 100.8 | 95.8 | 97.9 | 117.3 | | 87.9 | | | 96.7 |
| 2019 | | | | | | | | | | | | | |
| February | 107.4 | 110.0 | 116.6 | 95.4 | 100.0 | 95.6 | 99.8 | 110.4 | | 90.3 | | | 97.5 |
| March | 109.2 | 113.2 | 119.5 | 94.8 | 99.8 | 94.8 | 97.5 | 110.3 | | 89.0 | | | 97.2 |
| April | 109.3 | 112.4 | 119.6 | 95.1 | 100.5 | 94.5 | 97.5 | 113.4 | | 89.3 | | | 96.9 |
| May | 110.6 | 112.7 | 119.3 | 95.5 | 101.2 | 92.6 | 97.5 | 120.3 | | 87.3 | | | 96.9 |
| June | 111.9 | 113.5 | 119.3 | 96.3 | 101.2 | 95.2 | 97.5 | 124.2 | | 86.2 | | | 95.9 |
| July | 113.4 | 117.0 | 119.7 | 91.2 | 101.5 | 96.9 | 97.5 | 122.0 | | 86.2 | | | 96.2 |
| August | 112.8 | 118.5 | 118.2 | 91.2 | 100.0 | 96.5 | 97.5 | 114.9 | | 86.2 | | | 96.8 |
| September | 113.8 | 119.1 | 118.1 | 91.3 | 100.7 | 96.8 | 97.5 | 118.8 | | 86.2 | | | 96.2 |
| October | 113.5 | 118.8 | 117.9 | 92.4 | 100.8 | 96.3 | 97.5 | 118.1 | | 86.2 | | | 96.2 |
| November | 113.7 | 118.1 | 118.7 | 93.4 | 101.3 | 96.9 | 97.5 | 120.5 | | 88.7 | | | 96.1 |
| December | 112.4 | 116.3 | 117.8 | 93.4 | 101.0 | 96.3 | 97.5 | 118.8 | | 88.7 | | | 97.2 |
| 2020 | | | | | | | | | | | | | |
| January | 111.5 | 113.8 | 117.8 | 93.4 | 101.0 | 96.3 | 97.5 | 121.4 | | 88.7 | | | 96.9 |
| February (P) | 113.8 | 118.1 | 117.8 | 93.4 | 101.3 | 97.2 | 97.5 | 120.8 | | 88.7 | | | 96.5 |
| <u>Percentage Change (P)</u> | | | | | | | | | | | | | |
| Feb 2020 over Jan 2020 | 2.0% | 3.8% | 0.0% | 0.0% | 0.3% | 0.9% | 0.0% | -0.4% | | 0.0% | | | -0.4% |
| Feb 2020 over Feb 2019 | 5.9% | 7.4% | 1.1% | -2.1% | 1.2% | 1.7% | -2.3% | 9.5% | | -1.7% | | | -1.0% |

Source : Samoa Bureau Statistics

(P) : Provisional figures

Note : n.a. Not applicable

Table 5. IMPORTED ITEMS UNDERLYING INDEX

(Base Period : Average Prices February 2016 = 100)

| Group | All Items | Food and Non Alcoholic Beverages | Alcoholic Beverages, Tobacco and Narcotics | Clothing and Footwear | Housing, Water , Electricity, Gas and other Fuels | Furnishings, Household Equipment and Maintenance | Health | Transport | Communication | Recreation and Culture | Education | Restaurants | Miscellaneous goods and services |
|-------------------------------------|--------------|----------------------------------|--|-----------------------|---|--|------------|-------------|---------------|------------------------|------------|-------------|----------------------------------|
| Weights | 401.2 | 269.1 | n.a | 15.2 | 24.2 | 26.9 | 2.5 | 23.0 | n.a | 5.6 | n.a | n.a | 34.7 |
| Ave - 2017 | 106.0 | 110.1 | | 97.0 | 93.8 | 98.9 | 91.7 | 104.5 | | 90.0 | | | 97.1 |
| Ave - 2018 | 108.8 | 113.8 | | 96.1 | 93.4 | 97.6 | 94.3 | 111.2 | | 92.0 | | | 96.6 |
| Ave - 2019 | 108.9 | 114.5 | | 93.7 | 94.6 | 95.8 | 97.9 | 108.1 | | 87.9 | | | 96.7 |
| 2019 | | | | | | | | | | | | | |
| February | 105.9 | 110.0 | | 95.4 | 94.9 | 95.6 | 99.8 | 106.2 | | 90.3 | | | 97.5 |
| March | 108.0 | 113.2 | | 94.8 | 94.7 | 94.8 | 97.5 | 107.3 | | 89.0 | | | 97.2 |
| April | 107.5 | 112.4 | | 95.1 | 94.6 | 94.5 | 97.5 | 108.3 | | 89.3 | | | 96.9 |
| May | 107.6 | 112.7 | | 95.5 | 94.6 | 92.6 | 97.5 | 108.3 | | 87.3 | | | 96.9 |
| June | 108.2 | 113.5 | | 96.3 | 94.1 | 95.2 | 97.5 | 108.3 | | 86.2 | | | 95.9 |
| July | 110.5 | 117.0 | | 91.2 | 94.5 | 96.9 | 97.5 | 108.3 | | 86.2 | | | 96.2 |
| August | 111.5 | 118.5 | | 91.2 | 94.5 | 96.5 | 97.5 | 108.3 | | 86.2 | | | 96.8 |
| September | 111.9 | 119.1 | | 91.3 | 94.4 | 96.8 | 97.5 | 109.2 | | 86.2 | | | 96.2 |
| October | 111.8 | 118.8 | | 92.4 | 94.8 | 96.3 | 97.5 | 109.2 | | 86.2 | | | 96.2 |
| November | 111.4 | 118.1 | | 93.4 | 94.8 | 96.9 | 97.5 | 109.2 | | 88.7 | | | 96.1 |
| December | 110.1 | 116.3 | | 93.4 | 94.9 | 96.3 | 97.5 | 106.7 | | 88.7 | | | 97.2 |
| 2020 | | | | | | | | | | | | | |
| January | 108.4 | 113.8 | | 93.4 | 94.8 | 96.3 | 97.5 | 106.7 | | 88.7 | | | 96.9 |
| February (P) | 111.3 | 118.1 | | 93.4 | 94.6 | 97.2 | 97.5 | 106.7 | | 88.7 | | | 96.5 |
| <u>Percentage Change (P)</u> | | | | | | | | | | | | | |
| Feb 2020 over Jan 2020 | 2.7% | 3.8% | | 0.0% | -0.3% | 0.9% | 0.0% | 0.0% | | 0.0% | | | -0.4% |
| Feb 2020 over Feb 2019 | 5.1% | 7.4% | | -2.1% | -0.4% | 1.7% | -2.3% | 0.4% | | -1.7% | | | -1.0% |

Source : Samoa Bureau Statistics

(P) : Provisional figures

Note : n.a. Not applicable

Table 6. LOCAL GOODS COMPONENT OF THE CONSUMER PRICE INDEX
(Base Period : Average Prices February 2016 = 100)

| Group | All Items | Food and Non Alcoholic Beverages | Alcoholic Beverages, Tobacco and Narcotics | Clothing and Footwear | Housing, Water , Electricity, Gas and other Fuels | Furnishings, Household Equipment and Maintenance | Health | Transport | Communication | Recreation and Culture | Education | Restaurants | Miscellaneous goods and services |
|-------------------------------------|--------------|----------------------------------|--|-----------------------|---|--|------------|-------------|---------------|------------------------|-------------|-------------|----------------------------------|
| Weights | 505.3 | 134.6 | 104.6 | 6.0 | 91.3 | 3.9 | 2.2 | 59.9 | 51.5 | 0.4 | 19.7 | 22.4 | 8.8 |
| Ave - 2017 | 98.6 | 95.0 | 107.1 | 95.7 | 90.6 | 100.1 | 100.0 | 101.6 | 101.2 | 100.0 | 97.9 | 98.3 | 102.3 |
| Ave - 2018 | 102.6 | 105.3 | 112.0 | 93.3 | 88.1 | 100.3 | 100.0 | 101.7 | 103.3 | 100.0 | 110.4 | 99.0 | 102.3 |
| Ave - 2019 | 105.5 | 107.3 | 116.5 | 93.8 | 93.2 | 100.3 | 102.5 | 102.3 | 104.2 | 100.0 | 113.5 | 103.3 | 102.3 |
| 2019 | | | | | | | | | | | | | |
| February | 103.2 | 105.1 | 116.2 | 94.8 | 85.5 | 100.3 | 100.0 | 103.2 | 102.9 | 100.0 | 110.5 | 100.6 | 102.3 |
| March | 104.9 | 107.5 | 116.2 | 94.2 | 91.3 | 100.3 | 103.0 | 100.7 | 105.2 | 100.0 | 110.6 | 102.8 | 102.3 |
| April | 104.4 | 106.2 | 115.6 | 94.6 | 91.3 | 100.3 | 103.0 | 100.5 | 105.2 | 100.0 | 110.6 | 103.4 | 102.3 |
| May | 105.5 | 109.4 | 115.1 | 94.7 | 91.3 | 100.3 | 103.0 | 102.4 | 104.3 | 100.0 | 114.9 | 103.4 | 102.3 |
| June | 105.2 | 106.5 | 115.3 | 94.7 | 91.3 | 100.3 | 103.0 | 105.7 | 104.3 | 100.0 | 114.9 | 103.4 | 102.3 |
| July | 107.0 | 110.1 | 117.2 | 94.7 | 97.3 | 100.3 | 103.0 | 100.4 | 104.3 | 100.0 | 114.9 | 103.4 | 102.3 |
| August | 107.4 | 111.1 | 117.5 | 94.7 | 97.3 | 100.3 | 103.0 | 101.2 | 104.3 | 100.0 | 114.9 | 103.4 | 102.3 |
| September | 106.6 | 107.5 | 117.3 | 94.2 | 97.3 | 100.3 | 103.0 | 102.6 | 104.3 | 100.0 | 114.9 | 103.4 | 102.3 |
| October | 106.4 | 106.1 | 117.6 | 92.1 | 97.3 | 100.3 | 103.0 | 104.5 | 104.3 | 100.0 | 114.9 | 103.4 | 102.3 |
| November | 106.0 | 103.6 | 117.2 | 92.1 | 96.7 | 100.3 | 103.0 | 108.1 | 104.3 | 100.0 | 114.9 | 103.4 | 102.3 |
| December | 105.4 | 104.1 | 117.2 | 93.3 | 96.7 | 100.3 | 103.0 | 99.7 | 104.3 | 100.0 | 114.9 | 108.3 | 102.3 |
| 2019 | | | | | | | | | | | | | |
| January | 108.0 | 110.5 | 120.1 | 92.9 | 98.6 | 100.3 | 103.0 | 99.6 | 104.2 | 100.0 | 114.9 | 108.3 | 102.3 |
| February (P) | 107.3 | 109.0 | 119.7 | 93.7 | 96.0 | 100.3 | 103.0 | 101.4 | 104.2 | 100.0 | 114.9 | 108.3 | 102.3 |
| <u>Percentage Change (P)</u> | | | | | | | | | | | | | |
| Feb 2020 over Jan 2020 | -0.7% | -1.3% | -0.3% | 0.9% | -2.6% | 0.0% | 0.0% | 1.8% | 0.0% | 0.0% | 0.0% | 0.0% | 0.0% |
| Feb 2020 over Feb 2019 | 4.0% | 3.8% | 3.0% | -1.2% | 12.3% | 0.0% | 3.0% | -1.8% | 1.3% | 0.0% | 3.9% | 7.6% | 0.0% |

Source : Samoa Bureau Statistics

(P) : Provisional figures

Note : n.a. Not applicable

■ Revised Figures

Table 7. LOCAL ITEMS UNDERLYING INDEX

(Base Period : Average Prices February 2016 = 100)

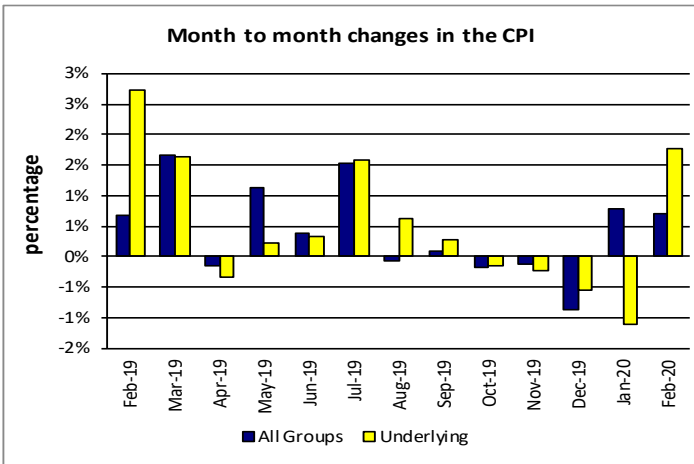
| Group | All Items | Food and Non Alcoholic Beverages | Alcoholic Beverages, Tobacco and Narcotics | Clothing and Footwear | Housing, Water , Electricity, Gas and other Fuels | Furnishings, Household Equipment and Maintenance | Health | Transport | Communication | Recreation and Culture | Education | Restaurants | Miscellaneous goods and services |
|-------------------------------------|--------------|----------------------------------|--|-----------------------|---|--|------------|------------|---------------|------------------------|-------------|-------------|----------------------------------|
| Weights | 185.5 | 76.1 | n.a | 6.0 | n.a | 3.9 | 1.0 | 3.4 | 51.5 | n.a | 12.3 | 22.4 | 8.8 |
| Ave - 2017 | 99.9 | 100.1 | | 95.7 | | 100.1 | 100.0 | 101.8 | 101.2 | | 96.7 | 98.3 | 102.3 |
| Ave - 2018 | 101.9 | 100.3 | | 93.3 | | 100.3 | 100.0 | 108.3 | 103.3 | | 114.0 | 99.0 | 102.3 |
| Ave - 2019 | 103.6 | 101.6 | | 93.8 | | 100.3 | 105.2 | 108.6 | 104.2 | | 118.5 | 103.3 | 102.3 |
| 2019 | | | | | | | | | | | | | |
| February | 102.4 | 101.1 | | 94.8 | | 100.3 | 100.0 | 108.6 | 102.9 | | 113.9 | 100.6 | 102.3 |
| March | 103.3 | 101.3 | | 94.2 | | 100.3 | 106.3 | 108.6 | 105.2 | | 113.9 | 102.8 | 102.3 |
| April | 103.3 | 101.0 | | 94.6 | | 100.3 | 106.3 | 108.6 | 105.2 | | 113.9 | 103.4 | 102.3 |
| May | 103.8 | 101.7 | | 94.7 | | 100.3 | 106.3 | 108.6 | 104.3 | | 120.6 | 103.4 | 102.3 |
| June | 103.6 | 101.2 | | 94.7 | | 100.3 | 106.3 | 108.6 | 104.3 | | 120.6 | 103.4 | 102.3 |
| July | 103.9 | 102.0 | | 94.7 | | 100.3 | 106.3 | 108.6 | 104.3 | | 120.6 | 103.4 | 102.3 |
| August | 103.9 | 101.9 | | 94.7 | | 100.3 | 106.3 | 108.6 | 104.3 | | 120.6 | 103.4 | 102.3 |
| September | 104.0 | 102.1 | | 94.2 | | 100.3 | 106.3 | 108.6 | 104.3 | | 120.6 | 103.4 | 102.3 |
| October | 103.8 | 102.0 | | 92.1 | | 100.3 | 106.3 | 108.6 | 104.3 | | 120.6 | 103.4 | 102.3 |
| November | 103.9 | 102.1 | | 92.1 | | 100.3 | 106.3 | 108.6 | 104.3 | | 120.6 | 103.4 | 102.3 |
| December | 104.7 | 102.5 | | 93.3 | | 100.3 | 106.3 | 108.6 | 104.3 | | 120.6 | 108.3 | 102.3 |
| 2019 | | | | | | | | | | | | | |
| January | 104.6 | 102.5 | | 92.9 | | 100.3 | 106.3 | 108.6 | 104.2 | | 120.6 | 108.3 | 102.3 |
| February (P) | 104.5 | 102.0 | | 93.7 | | 100.3 | 106.3 | 108.6 | 104.2 | | 120.6 | 108.3 | 102.3 |
| <u>Percentage Change (P)</u> | | | | | | | | | | | | | |
| Feb 2020 over Jan 2020 | -0.2% | -0.5% | | 0.9% | | 0.0% | 0.0% | 0.0% | 0.0% | | 0.0% | 0.0% | 0.0% |
| Feb 2020 over Feb 2019 | 2.0% | 0.8% | | -1.2% | | 0.0% | 6.3% | 0.0% | 1.3% | | 5.9% | 7.6% | 0.0% |

Source : Samoa Bureau Statistics

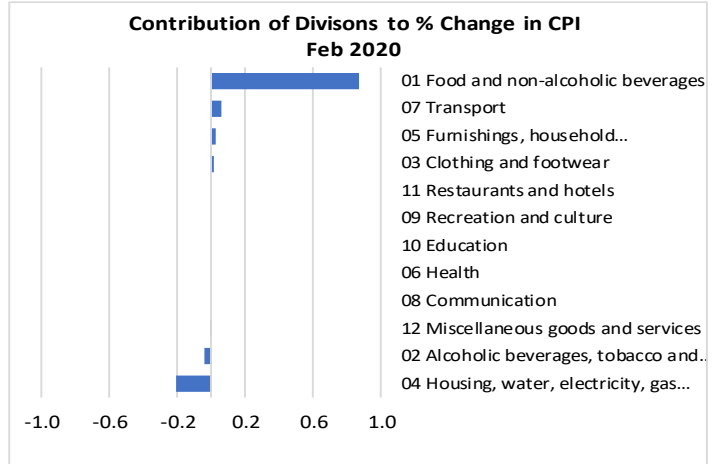
(P) : Provisional figures

Note : n.a. Not applicable

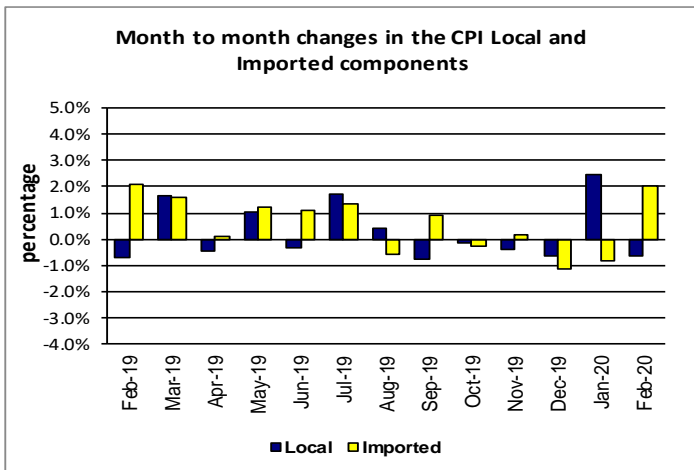
Graph.5



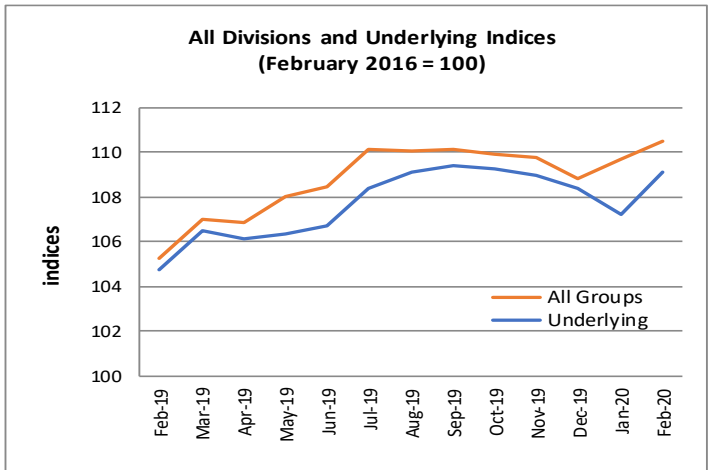
Graph.6



Graph.7



Graph.8



Graph.9

