

Please address all correspondence
To Government Statistician
In reply, please quote the file reference



GOVERNMENT OF SAMOA

File Ref: CPI 6/2020

SAMOA BUREAU OF STATISTICS

CONSUMER PRICE INDEX JUNE 2020

Key findings:

The Consumer Price Index for June 2020 decreased by 0.8 percent compared to the previous month.

- The Transport index decreased by 5.4 percent driven by reduced fuel price.
- The Health index also decreased by 2.5 percent.
- The Average Annual Inflation for the year ended June 2020 was 1.5 percent.

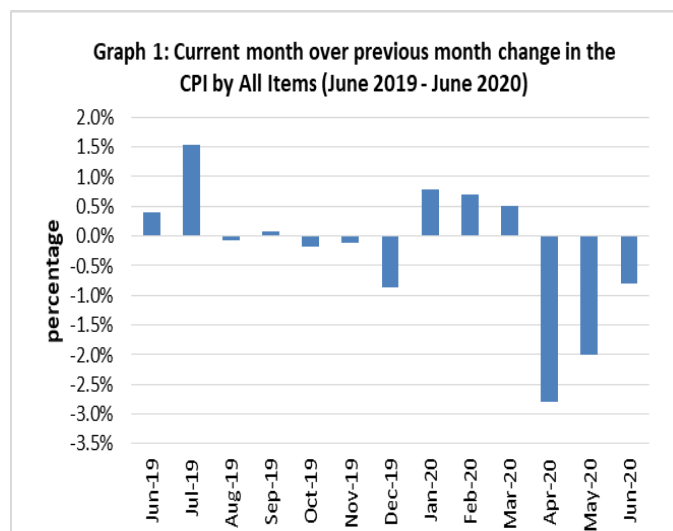
The CPI fell 3.3 percent from June 2019.

SUMMARY

The Consumer Price Index for June 2020 was 0.8 percent lower than in May 2020 and was 3.3 percent lower than June 2019.

The decrease of the Imported Goods Component by 1.8 percent reflects lower prices for fuel and medicine, which also contributed to the decrease of 0.8 percent in the All Items Consumer Price Index.

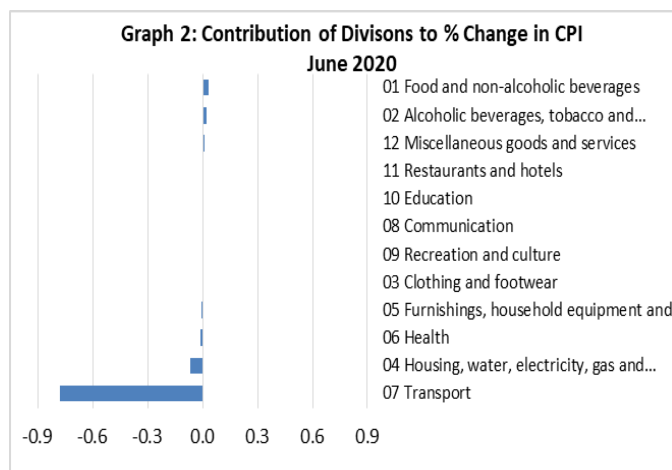
The Local Component recorded an increase of 0.2 percent from the previous month. Graph 1 shows the month to month percentage changes in the Consumer Price Index by All Divisions from June 2019 to June 2020.



Source : Samoa Bureau of Statistics

Total All Divisions Contribution

As depicted in Graph 2, Transport and Housing, Water, Electricity, Gas and other Fuels divisions were the main contributors to the overall decrease of 0.8 percent in the All Division Consumer Price Index.



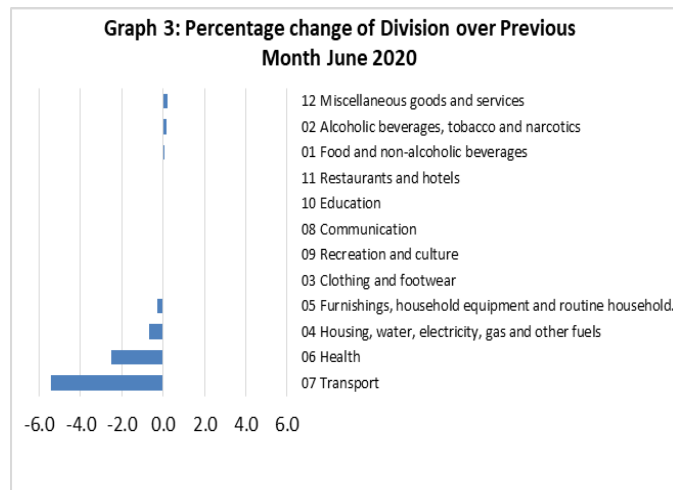
Source : Samoa Bureau of Statistics

Consumer Price Index (% Change)

The 0.8 percent decrease in the Overall Index was mainly due to a decrease of 5.4 percent in Transport index. Health index recorded a decrease of 2.5 percent, while Housing, Water, Electricity Gas and Other Fuel and Furnishing, Household Equipment and Maintenance indices showed decreases of 0.7 and 0.3 percent respectively

On the contrary, increases were registered for Alcoholic Beverages and Tobacco index with 0.2 percent, Miscellaneous Goods and Services index with 0.2 percent and Food and Non Alcoholic Beverages index with 0.1 percent.

No changes were recorded for the Clothing and Footwear, Communication, Recreation and Culture, Education and Restaurants indices. Graphically presented in Graph 3 is the June 2020 percentage change for all divisions from May 2020.



Source : Samoa Bureau of Statistics

Imported Goods Component

The Imported Goods Component of the Consumer Price Index registered a decrease of 1.8 percent when compared to the previous month. This decrease was mainly due to lower prices recorded for fuel (petrol, diesel and kerosene) and medicine.

Local Goods Component

Increased prices recorded for local food and local beer have resulted in the 0.2 percent increase in the local Good Component.

Transport Index

Lower prices recorded for fuel (petrol and diesel) is reflected in the 5.4 percent decrease in the Transport index.

Health Index

The 2.5 percent decrease in the Health index influenced by the lower prices recorded for medicine (amoxicillin tablets).

Housing, Water, Electricity, Gas and other Fuels Index

Decreased prices recorded for kerosene is reflected in the 0.7 percent decrease in the Housing, Water, Electricity, Gas and other Fuels index.

Furnishings, Household Equipment, and Maintenance Index

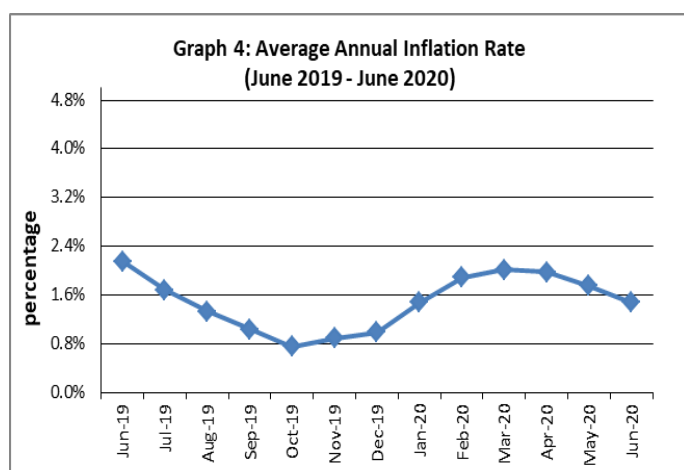
The Furnishing, Household, Equipment and Maintenance index recorded a decrease of 0.3 percent due to the decrease in prices recorded for mosquito coil and washing soap.

Underlying Indices ^{1/}

The All Items Underlying Index for June 2020 registered a decrease of 0.1 percent when compared to May 2020, and a decrease of 0.1 percent when compared to June 2019. The Imported Items Underlying Index registered a decrease of 0.1 percent, while the Local Items Underlying Index recorded no change from the previous month.

Inflation Rate

The average annual inflation rate for the year ended June 2020 was 1.5 percent. For the twelve months ending June 2019 the inflation rate was 2.2 percent. Presented in Graph 4 is the average annual inflation rate (June 2019 - June 2020).



Source : Samoa Bureau of Statistics

The attached Tables and Graphs provide the user with more detailed analysis.

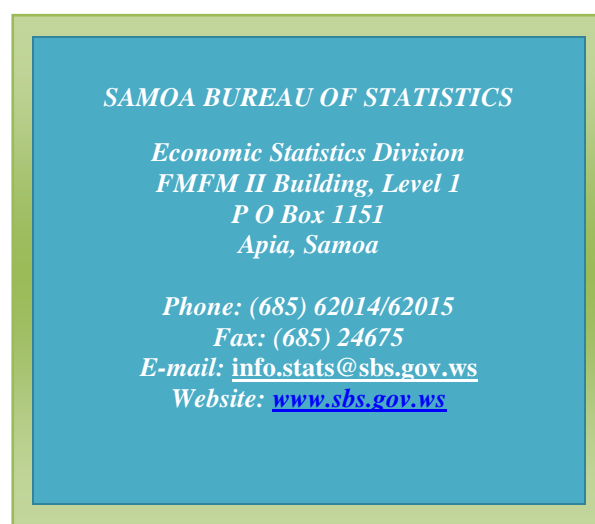
Technical Notes:

The Consumer Price (CPI) measures the rate of inflation for Samoa. It is designed to measure the change in prices for the goods purchased by households in Samoa. The CPI measures the change in prices by comparing the prices for a basket of goods and services at the collection period with the price for the same goods in a base period.

The basket of goods that is priced is based on the average expenditures of households as recorded in the Household Income and Expenditure Survey (HIES). The HIES survey identifies how much households spend on different items. The more households spend on an item on average, the more important it is to the price index, and the higher the weight in the index.

^{1/} Monthly movements in the 'headline' CPI series can be volatile. This volatility reflects price changes in particular items that may be due, among other factors, to fluctuations in commodity markets and agricultural conditions, policy changes, or seasonal or infrequent price resetting.

Underlying inflation is a measure of inflation that excludes certain items that face volatile price movements. Underlying inflation eliminates products that can have temporary price shocks because these shocks can diverge from the overall trend of inflation and give a false measure of inflation.



Date of release: 12th August 2020.

The next Consumer Price Index will be released on 14th August 2020.

Aliimuamua Malaefono Tauā - T.Faasalaina
GOVERNMENT STATISTICIAN/(CEO)

Table 1. CONSUMER PRICE INDEX.

(Base Period : Average Prices February 2016 = 100)

Group	All Items	Food and Non Alcoholic Beverages	Alcoholic Beverages, Tobacco and Narcotics	Clothing and Footwear	Housing, Water, Electricity, Gas and other Fuels	Furnishings, Household Equipment, and Maintenance	Health	Transport	Communication	Recreation and Culture	Education	Restaurants	Miscellaneous goods and services
<i>Weights</i>	1000.0	403.7	128.4	21.2	119.6	30.8	4.6	148.5	51.5	6.1	19.7	22.4	43.5
<i>Ave - 2017</i>	102.9	105.1	107.6	96.6	92.2	99.1	95.6	107.3	101.2	90.7	97.9	98.3	98.1
<i>Ave - 2018</i>	107.2	111.0	112.3	95.3	91.0	98.0	97.0	115.0	103.3	92.6	110.4	99.0	97.8
<i>Ave - 2019</i>	108.3	112.1	116.8	93.8	95.0	96.4	100.0	111.3	104.2	88.7	113.5	103.3	97.8
2019													
June	108.5	111.2	116.0	95.9	93.6	95.8	100.1	116.8	104.3	87.1	114.9	103.4	97.2
July	110.1	114.7	117.7	92.2	98.3	97.4	100.1	113.3	104.3	87.1	114.9	103.4	97.4
August	110.1	116.0	117.7	92.2	97.9	97.0	100.1	109.4	104.3	87.1	114.9	103.4	97.9
September	110.1	115.3	117.5	92.1	98.1	97.3	100.1	112.3	104.3	87.1	114.9	103.4	97.5
October	109.9	114.6	117.7	92.3	98.1	96.8	100.1	112.6	104.3	87.1	114.9	103.4	97.5
November	109.8	113.2	117.5	93.0	97.8	97.3	100.1	115.5	104.3	89.5	114.9	103.4	97.4
December	108.9	112.3	117.3	93.4	97.7	96.8	100.1	111.1	104.3	89.5	114.9	108.3	98.2
2020													
January	109.7	112.7	119.7	93.3	99.1	96.8	100.1	112.6	104.2	89.5	114.9	108.3	98.0
February	110.5	115.1	119.3	93.5	97.3	97.6	100.1	113.0	104.2	89.5	114.9	108.3	97.7
March	111.0	117.1	119.3	93.5	96.6	97.7	100.1	111.8	104.2	89.5	114.9	108.3	97.9
April	107.9	113.2	118.9	93.5	86.3	98.1	100.1	109.8	104.2	88.0	114.9	108.3	98.8
May	105.8	110.5	118.9	93.5	86.0	98.8	100.1	102.3	104.2	88.0	114.9	108.3	99.7
June (P)	104.9	110.6	119.1	93.5	85.4	98.5	97.6	96.8	104.2	88.0	114.9	108.3	99.9
<u>Percentage Change (P)</u>													
Jun 2020													
over	-0.8%	0.0%	0.2%	0.0%	-0.7%	-0.3%	-2.5%	-5.4%	0.0%	0.0%	0.0%	0.0%	0.2%
May 2020													
Jun 2020													
over	-3.3%	-0.6%	2.7%	-2.5%	-8.8%	2.8%	-2.5%	-17.1%	-0.1%	0.9%	0.0%	4.7%	2.8%
Jun 2019													

Source : Samoa Bureau Statistics

(P) : Provisional figures

Note : n.a. Not applicable

Table 2. ALL ITEMS UNDERLYING INDEX
(Base Period : Average Prices February 2016 = 100)

Group	All Items	Food and Non Alcoholic Beverages	Alcoholic Beverages, Tobacco and Narcotics	Clothing and Footwear	Housing, Water, Electricity, Gas and other Fuels	Furnishings, Household Equipment, and Maintenance	Health	Transport	Communication	Recreation and Culture	Education	Restaurants	Miscellaneous goods and services
<i>Weights</i>	586.7	345.3	<i>n.a</i>	21.2	24.2	30.8	3.5	26.4	51.5	5.6	12.3	22.4	43.5
<i>Ave - 2017</i>	104.1	107.9		96.6	93.8	99.1	94.2	104.2	101.2	90.0	96.7	98.3	98.1
<i>Ave - 2018</i>	106.6	110.8		95.3	93.4	98.0	96.0	110.8	103.3	92.0	114.0	99.0	97.8
<i>Ave - 2019</i>	107.2	111.6		93.8	94.6	96.4	100.1	108.1	104.2	87.9	118.5	103.3	97.8
2019													
June	106.7	110.8		95.9	94.1	95.8	100.1	108.4	104.3	86.2	120.6	103.4	97.2
July	108.4	113.7		92.2	94.5	97.4	100.1	108.4	104.3	86.2	120.6	103.4	97.4
August	109.1	114.9		92.2	94.5	97.0	100.1	108.4	104.3	86.2	120.6	103.4	97.9
September	109.4	115.4		92.1	94.4	97.3	100.1	109.1	104.3	86.2	120.6	103.4	97.5
October	109.3	115.1		92.3	94.8	96.8	100.1	109.1	104.3	86.2	120.6	103.4	97.5
November	109.0	114.5		93.0	94.8	97.3	100.1	109.1	104.3	88.7	120.6	103.4	97.4
December	108.4	113.3		93.4	94.9	96.8	100.1	106.9	104.3	88.7	120.6	108.3	98.2
2020													
January	107.2	111.3		93.3	94.8	96.8	100.1	106.9	104.2	88.7	120.6	108.3	98.0
February	109.1	114.5		93.5	94.6	97.6	100.1	106.9	104.2	88.7	120.6	108.3	97.7
March	110.3	116.5		93.5	94.0	97.7	100.1	106.9	104.2	88.7	120.6	108.3	97.9
April	108.3	112.8		93.5	93.6	98.1	100.1	110.3	104.2	87.0	120.6	108.3	98.8
May	106.7	109.9		93.5	95.0	98.8	100.1	110.2	104.2	87.0	120.6	108.3	99.7
June (P)	106.7	109.8		93.5	95.2	98.5	96.8	110.4	104.2	87.0	120.6	108.3	99.9
<u>Percentage Change (P)</u>													
Jun 2020 over	-0.1%	-0.1%		0.0%	0.2%	-0.3%	-3.3%	0.2%	0.0%	0.0%	0.0%	0.0%	0.2%
May 2020													
Jun 2020 over	-0.1%	-0.9%		-2.5%	1.2%	2.8%	-3.3%	1.9%	-0.1%	1.0%	0.0%	4.7%	2.8%
Jun 2019													

Source : Samoa Bureau Statistics

(P) : Provisional figures

Note : n.a. Not applicable

Table 3. AVERAGE RETAIL PRICES OF SELECTED COMMODITIES

Commodities	Wt	Unit	2019			2020		
			Apr	May	June	Apr	May	June (P)
01 Food and non-alcoholic beverages								
Leg Quarters Chicken	62.2	kg	4.07	4.22	4.30	4.62	4.19	4.14
Raw Sugar	21.3	kg	2.62	2.47	2.49	2.51	2.65	2.67
Bread	17.2	loaf	1.70	1.72	1.71	1.67	1.65	1.65
Corned Beef (a)	15.9	12 oz	8.13	8.13	7.97	8.12	8.12	8.12
Taro	15.2	kg	2.10	2.56	2.62	2.30	2.49	2.94
Re-packed medium grain rice	13.4	kg	2.96	2.93	2.92	2.83	2.71	2.92
Prepacked medium grain rice (a)	13.4	907g	3.28	3.23	3.25	2.77	2.78	2.77
Canned fish between \$3.00 and \$3.99 Natural Oil	12.7	15 oz	3.40	3.42	3.50	3.37	3.44	3.48
Bongo	10.2	20grms	0.78	0.80	0.80	0.80	0.80	0.80
Keke Saina Biscuits (a)	9.2	pkt 10	6.29	6.25	6.18	6.25	6.25	6.25
Tip Top Ice Cream (a)	9.2	2 ltr	15.32	15.32	15.32	15.33	15.33	15.33
Ramen maggie	9.0	85gms	1.08	1.07	1.08	1.07	1.08	1.09
Fish (Piece)	7.9	kg	21.56	20.10	16.75	20.94	23.94	20.67
Butter Anchor	7.7	454g	14.14	14.07	14.07	16.07	15.80	15.66
Round Pancake (a)	7.5	sml	0.15	0.15	0.15	0.15	0.15	0.15
Mutton Flaps	6.6	kg	21.88	22.13	22.56	23.69	22.94	23.26
Canned fish \$4:00 or over N/Oil	6.4	15 oz	4.95	4.93	4.96	5.05	5.02	4.97
Canned fish under \$3.00 in N/Oil	6.4	15 oz	2.60	2.60	2.58	2.68	2.65	2.72
Wings Turkey	6.3	kg	6.49	6.17	6.22	7.44	7.51	6.91
Fish (string)	6.0	kg	11.06	10.73	10.43	11.13	10.38	9.87
Fish (large)	6.0	kg	15.93	19.43	17.47	16.81	14.63	15.80
02 Alcoholic beverages, tobacco and narcotics								
Lager Beer	37.9	355 mls	3.59	3.56	3.59	3.59	3.59	3.61
Pall Mall Filter Cigarettes (Red)	24.3	20 rolls	13.40	13.40	13.40	14.20	14.20	14.20
Pall Mall Menthol Cigarettes (Green)	24.3	20 rolls	13.40	13.40	13.40	14.20	14.20	14.20
Beer (a)	16.3	330 mls	3.36	3.36	3.36	3.38	3.38	3.40
Winfield Tobacco (a)	12.6	packet	15.00	15.00	15.00	15.00	15.00	15.00
03 Clothing and footwear								
Uniform le Faitaga College boys	4.3	size 8-10	29.67	29.67	29.67	29.67	29.67	29.67
Uniform Pa'ave (a)	3.7	size 7	35.33	35.33	36.33	31.00	31.00	31.00
04 Housing, water, electricity, gas and other fuels								
Electricity / Cashpower / kw h 1- 100 / total cost per	50.6	kw h	0.67	0.67	0.67	0.51	0.51	0.51
Reservoir treated Water	28.5	15-40 m3	1.40	1.40	1.40	1.47	1.47	1.47
Liquid gas	15.8	9kg	62.00	62.00	62.00	62.00	62.00	62.00
Government house Rent	12.2	2 b/room	650.00	650.00	650.00	650.00	650.00	650.00

05 Furnishings, household equipment and routine household maintenance

Washing powder (a)	6.3	200g	1.71	1.60	1.78	1.90	1.90	1.91
Soap yellow Washing soap	5.9	bar	2.69	2.74	2.74	2.81	2.81	2.79
Mosquito coil	4.4	10 coil	1.20	1.20	1.18	1.28	1.33	1.30

06 Health

Amoxicillin mg Tablets (a)	2.5	500 mg	7.58	7.58	7.58	7.58	7.58	7.00
Hospital Charge	1.1	night	22.50	22.50	22.50	22.50	22.50	22.50

07 Transport

Petrol	60.8	1 ltr	2.48	2.69	2.81	2.55	2.19	1.92
Taxi Fare PO Motootua Hosp	8.2	per trip	4.80	4.80	4.80	4.80	4.80	4.80
Taxi Fares PO Malua	8.2	per trip	31.30	31.30	31.30	31.30	31.30	31.30
Taxi Fares PO Falefa	8.2	per trip	43.20	43.20	43.20	43.20	43.20	43.20
Air Fares Fagalii Pago Fagalii	6.8	return trip	395.00	395.00	395.00	395.00	395.00	395.00
Air Fares Apia Auckland Apia	6.8	1 month	1234.21	1441.63	1795.77	1257.87	1257.87	1257.87

08 Communication

Calling per minute Rate cell phone (a)	10.02	per minute	0.45	0.43	0.43	0.43	0.43	0.43
Internet data bundles per mb Rate (a)	10.02	per mb	0.25	0.25	0.25	0.25	0.25	0.25
Calling per minute Rate cell phone (a)	10.02	per minute	0.44	0.44	0.44	0.44	0.44	0.44
Internet data bundles per mb Rate (a)	10.02	per mb	0.20	0.20	0.20	0.20	0.20	0.20

09 Recreation and culture

Television (a)	2.30	LCD	918.83	861.00	827.67	852.83	852.83	852.83
Exercise Book w arw ick	1.44	1B4 64 pa	1.37	1.37	1.37	1.40	1.40	1.40
Laptop (a)	1.33	each	2938.60	2918.60	2918.60	2918.60	2918.60	2918.60

10 Education

Fees PTA Primary Y Urban Registration fees (a)	7.23	Year 6	82.50	82.50	82.50	82.50	82.50	82.50
Fees PTA Secondary Y Urban Registration fees (a)	5.11	Year 10	50.00	58.00	58.00	58.00	58.00	58.00
Fees Tertiary NUS registration School Fees	3.79	registratioi	322.00	322.00	322.00	322.00	322.00	322.00
Fees Secondary Y Examination Fees (a)	3.61	Y12-13	25.50	25.50	25.50	25.50	25.50	25.50

11 Restaurants and hotels

Fish & Chip Meal	7.79	1 serve	9.17	9.17	9.17	9.17	9.17	9.17
Curry & Chopsuey Meal	4.87	1 serve	3.67	3.67	3.67	4.67	4.67	4.67
Chicken & Chips Meal (a)	4.87	1 serve	9.64	9.64	9.64	9.64	9.64	9.64
Steam rice & chicken Meal (a)	4.87	1 serve	4.83	4.83	4.83	4.83	4.83	4.83

12 Miscellaneous goods and services

Paper Sofan deluxe ply Toilet Paper	8.52	250 sheet:	1.03	1.03	1.00	1.06	1.08	1.09
Hair Gel	4.59	1124ml	4.43	4.43	4.44	4.57	4.74	4.74
Price for Storage of remains (a)	4.41	per day	60.00	60.00	60.00	60.00	60.00	60.00
Basic Casket (a)	4.41	each	1966.67	1966.67	1966.67	1966.67	1966.67	1966.67
Standard Embalming (a)	4.41	1 person	1500.00	1500.00	1500.00	1500.00	1500.00	1500.00
Toilet soap (a)	4.38	90g	1.84	1.85	1.86	1.95	1.95	1.95
Diapers (a)	4.19	5kg-10kg	9.13	9.13	8.99	8.33	8.33	8.33

Source : Samoa Bureau Statistics

(a) : New commodity from February 2016

(P) : Provisional figures

Note : Please note unit of conversion was in pound's (lb's) but been converted into kilograms (kg)

Table 4. IMPORTED GOODS COMPONENT OF THE CONSUMER PRICE INDEX
(Base Period : Average Prices February 2016 = 100)

Group	All Items	Food and Non Alcoholic Beverages	Alcoholic Beverages, Tobacco and Narcotics	Clothing and Footwear	Housing, Water, Electricity, Gas and other Fuels	Furnishings, Household Equipment and Maintenance	Health	Transport	Communication	Recreation and Culture	Education	Restaurants	Miscellaneous goods and services
<i>Weights</i>	494.7	269.1	23.8	15.2	28.3	26.9	2.5	88.6	<i>n.a</i>	5.6	<i>n.a</i>	<i>n.a</i>	34.7
<i>Ave - 2017</i>	107.3	110.1	110.0	97.0	97.6	98.9	91.7	111.2		90.0			97.1
<i>Ave - 2018</i>	111.9	113.8	113.5	96.1	100.6	97.6	94.3	124.0		92.0			96.6
<i>Ave - 2019</i>	111.1	114.5	118.3	93.7	100.8	95.8	97.9	117.3		87.9			96.7
2019													
June	111.9	113.5	119.3	96.3	101.2	95.2	97.5	124.2		86.2			95.9
July	113.4	117.0	119.7	91.2	101.5	96.9	97.5	122.0		86.2			96.2
August	112.8	118.5	118.2	91.2	100.0	96.5	97.5	114.9		86.2			96.8
September	113.8	119.1	118.1	91.3	100.7	96.8	97.5	118.8		86.2			96.2
October	113.5	118.8	117.9	92.4	100.8	96.3	97.5	118.1		86.2			96.2
November	113.7	118.1	118.7	93.4	101.3	96.9	97.5	120.5		88.7			96.1
December	112.4	116.3	117.8	93.4	101.0	96.3	97.5	118.8		88.7			97.2
2020													
January	111.5	113.8	117.8	93.4	101.0	96.3	97.5	121.4		88.7			96.9
February	113.8	118.1	117.8	93.4	101.3	97.2	97.5	120.8		88.7			96.5
March	114.8	120.7	117.4	93.1	100.3	97.3	97.5	119.2		88.7			96.8
April	111.6	116.0	117.4	93.1	98.0	97.8	97.5	115.8		87.0			97.9
May	107.7	112.6	117.4	93.1	96.7	98.6	97.5	104.0		87.0			99.0
June (P)	105.7	112.4	117.4	93.1	94.3	98.3	92.7	94.7		87.0			99.3
<u>Percentage Change (P)</u>													
Jun 2020 over	-1.8%	-0.2%	0.0%	0.0%	-2.5%	-0.3%	-4.9%	-8.9%		0.0%			0.3%
May 2020													
Jun 2020 over	-5.5%	-1.0%	-1.6%	-3.4%	-6.9%	3.3%	-4.9%	-23.8%		1.0%			3.6%
Jun 2019													

Source : Samoa Bureau Statistics

(P) : Provisional figures

Note : n.a. Not applicable

Table 5. IMPORTED ITEMS UNDERLYING INDEX

(Base Period : Average Prices February 2016 = 100)

Group	All Items	Food and Non Alcoholic Beverages	Alcoholic Beverages, Tobacco and Narcotics	Clothing and Footwear	Housing, Water, Electricity, Gas and other Fuels	Furnishings, Household Equipment and Maintenance	Health	Transport	Communication	Recreation and Culture	Education	Restaurants	Miscellaneous goods and services
Weights	401.2	269.1	n.a	15.2	24.2	26.9	2.5	23.0	n.a	5.6	n.a	n.a	34.7
Ave - 2017	106.0	110.1		97.0	93.8	98.9	91.7	104.5		90.0			97.1
Ave - 2018	108.8	113.8		96.1	93.4	97.6	94.3	111.2		92.0			96.6
Ave - 2019	108.9	114.5		93.7	94.6	95.8	97.9	108.1		87.9			96.7
2019													
June	108.2	113.5		96.3	94.1	95.2	97.5	108.3		86.2			95.9
July	110.5	117.0		91.2	94.5	96.9	97.5	108.3		86.2			96.2
August	111.5	118.5		91.2	94.5	96.5	97.5	108.3		86.2			96.8
September	111.9	119.1		91.3	94.4	96.8	97.5	109.2		86.2			96.2
October	111.8	118.8		92.4	94.8	96.3	97.5	109.2		86.2			96.2
November	111.4	118.1		93.4	94.8	96.9	97.5	109.2		88.7			96.1
December	110.1	116.3		93.4	94.9	96.3	97.5	106.7		88.7			97.2
2020													
January	108.4	113.8		93.4	94.8	96.3	97.5	106.7		88.7			96.9
February	111.3	118.1		93.4	94.6	97.2	97.5	106.7		88.7			96.5
March	113.0	120.7		93.1	94.0	97.3	97.5	106.7		88.7			96.8
April	110.2	116.0		93.1	93.6	97.8	97.5	110.6		87.0			97.9
May	108.1	112.6		93.1	95.0	98.6	97.5	110.4		87.0			99.0
June (P)	108.0	112.4		93.1	95.2	98.3	92.7	110.7		87.0			99.3
Percentage Change (P)													
Jun 2020 over May 2020	-0.1%	-0.2%		0.0%	0.2%	-0.3%	-4.9%	0.2%		0.0%			0.3%
Jun 2020 over Jun 2019	-0.2%	-1.0%		-3.4%	1.2%	3.3%	-4.9%	2.1%		1.0%			3.6%

Source : Samoa Bureau Statistics

(P) : Provisional figures

Note : n.a. Not applicable

Table 6. LOCAL GOODS COMPONENT OF THE CONSUMER PRICE INDEX
(Base Period : Average Prices February 2016 = 100)

Group	All Items	Food and Non Alcoholic Beverages	Alcoholic Beverages, Tobacco and Narcotics	Clothing and Footwear	Housing, Water, Electricity, Gas and other Fuels	Furnishings, Household Equipment and Maintenance	Health	Transport	Communication	Recreation and Culture	Education	Restaurants	Miscellaneous goods and services
Weights	505.3	134.6	104.6	6.0	91.3	3.9	2.2	59.9	51.5	0.4	19.7	22.4	8.8
Ave - 2017	98.6	95.0	107.1	95.7	90.6	100.1	100.0	101.6	101.2	100.0	97.9	98.3	102.3
Ave - 2018	102.6	105.3	112.0	93.3	88.1	100.3	100.0	101.7	103.3	100.0	110.4	99.0	102.3
Ave - 2019	105.5	107.3	116.5	93.8	93.2	100.3	102.5	102.3	104.2	100.0	113.5	103.3	102.3
2019													
June	105.2	106.5	115.3	94.7	91.3	100.3	103.0	105.7	104.3	100.0	114.9	103.4	102.3
July	107.0	110.1	117.2	94.7	97.3	100.3	103.0	100.4	104.3	100.0	114.9	103.4	102.3
August	107.4	111.1	117.5	94.7	97.3	100.3	103.0	101.2	104.3	100.0	114.9	103.4	102.3
September	106.6	107.5	117.3	94.2	97.3	100.3	103.0	102.6	104.3	100.0	114.9	103.4	102.3
October	106.4	106.1	117.6	92.1	97.3	100.3	103.0	104.5	104.3	100.0	114.9	103.4	102.3
November	106.0	103.6	117.2	92.1	96.7	100.3	103.0	108.1	104.3	100.0	114.9	103.4	102.3
December	105.4	104.1	117.2	93.3	96.7	100.3	103.0	99.7	104.3	100.0	114.9	108.3	102.3
2020													
January	108.0	110.5	120.1	92.9	98.6	100.3	103.0	99.6	104.2	100.0	114.9	108.3	102.3
February	107.3	109.0	119.7	93.7	96.0	100.3	103.0	101.4	104.2	100.0	114.9	108.3	102.3
March	107.3	109.9	119.7	94.4	95.4	100.3	103.0	100.8	104.2	100.0	114.9	108.3	102.3
April	104.3	107.5	119.3	94.4	82.6	100.3	103.0	100.8	104.2	100.0	114.9	108.3	102.3
May	103.9	106.4	119.3	94.4	82.6	100.3	103.0	99.9	104.2	100.0	114.9	108.3	102.3
June (P)	104.1	106.9	119.5	94.4	82.6	100.3	103.0	99.9	104.2	100.0	114.9	108.3	102.3
<u>Percentage Change (P)</u>													
Jun 2020 over May 2020	0.2%	0.5%	0.2%	0.0%	0.0%	0.0%	0.0%	0.0%	0.0%	0.0%	0.0%	0.0%	0.0%
Jun 2020 over Jun 2019	-1.0%	0.4%	3.7%	-0.4%	-9.5%	0.0%	0.0%	-5.5%	-0.1%	0.0%	0.0%	4.7%	0.0%

Source : Samoa Bureau Statistics

(P) : Provisional figures

Note : n.a. Not applicable

Table 7. LOCAL ITEMS UNDERLYING INDEX

(Base Period : Average Prices February 2016 = 100)

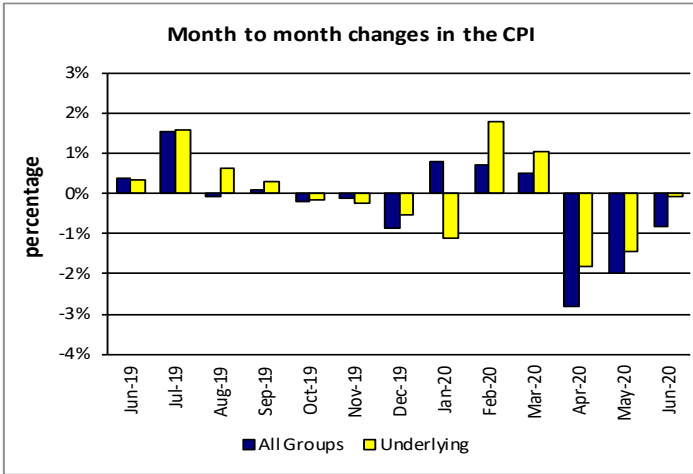
Group	All Items	Food and Non Alcoholic Beverages	Alcoholic Beverages, Tobacco and Narcotics	Clothing and Footwear	Housing, Water , Electricity, Gas and other Fuels	Furnishings, Household Equipment and Maintenance	Health	Transport	Communication	Recreation and Culture	Education	Restaurants	Miscellaneous goods and services
Weights	185.5	76.1	n.a	6.0	n.a	3.9	1.0	3.4	51.5	n.a	12.3	22.4	8.8
Ave - 2017	99.9	100.1		95.7		100.1	100.0	101.8	101.2		96.7	98.3	102.3
Ave - 2018	101.9	100.3		93.3		100.3	100.0	108.3	103.3		114.0	99.0	102.3
Ave - 2019	103.6	101.6		93.8		100.3	105.2	108.6	104.2		118.5	103.3	102.3
2019													
June	103.6	101.2		94.7		100.3	106.3	108.6	104.3		120.6	103.4	102.3
July	103.9	102.0		94.7		100.3	106.3	108.6	104.3		120.6	103.4	102.3
August	103.9	101.9		94.7		100.3	106.3	108.6	104.3		120.6	103.4	102.3
September	104.0	102.1		94.2		100.3	106.3	108.6	104.3		120.6	103.4	102.3
October	103.8	102.0		92.1		100.3	106.3	108.6	104.3		120.6	103.4	102.3
November	103.9	102.1		92.1		100.3	106.3	108.6	104.3		120.6	103.4	102.3
December	104.7	102.5		93.3		100.3	106.3	108.6	104.3		120.6	108.3	102.3
2020													
January	104.6	102.5		92.9		100.3	106.3	108.6	104.2		120.6	108.3	102.3
February	104.5	102.0		93.7		100.3	106.3	108.6	104.2		120.6	108.3	102.3
March	104.4	101.7		94.4		100.3	106.3	108.6	104.2		120.6	108.3	102.3
April	104.2	101.3		94.4		100.3	106.3	108.6	104.2		120.6	108.3	102.3
May	103.8	100.4		94.4		100.3	106.3	108.6	104.2		120.6	108.3	102.3
June (P)	103.9	100.5		94.4		100.3	106.3	108.6	104.2		120.6	108.3	102.3
<u>Percentage Change (P)</u>													
Jun 2020 over May 2020	0.0%	0.1%		0.0%		0.0%	0.0%	0.0%	0.0%		0.0%	0.0%	0.0%
Jun 2020 over Jun 2019	0.2%	-0.7%		-0.4%		0.0%	0.0%	0.0%	-0.1%		0.0%	4.7%	0.0%

Source : Samoa Bureau Statistics

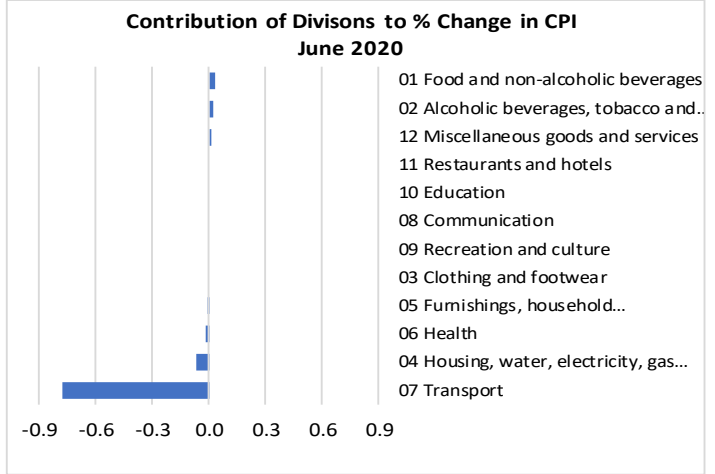
(P) : Provisional figures

Note : n.a. Not applicable

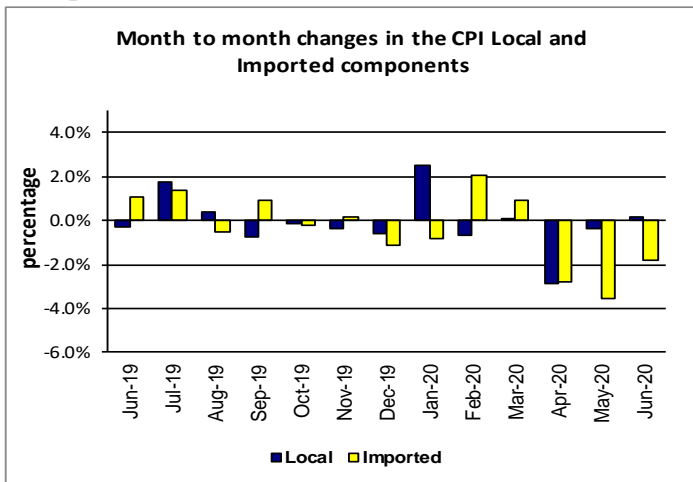
Graph.5



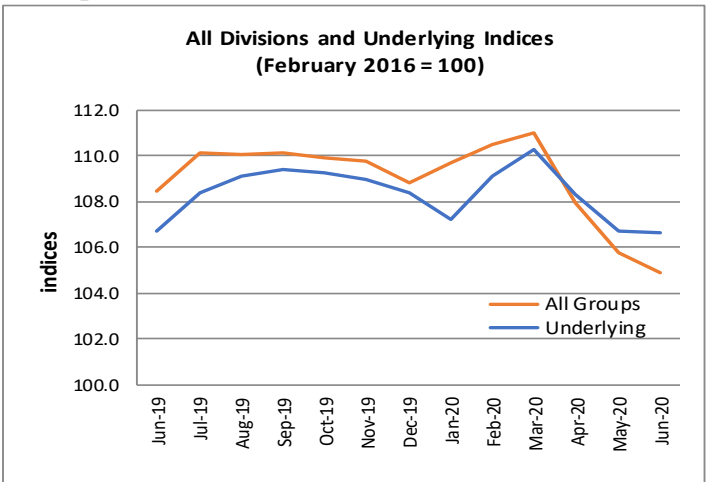
Graph.6



Graph.7



Graph.8



Graph.9

