

Please address all correspondence
To Government Statistician
In reply, please quote the file reference



File Ref: CPI 03/2020

GOVERNMENT OF SAMOA

SAMOA BUREAU OF STATISTICS

CONSUMER PRICE INDEX MARCH 2020

Key findings:

The Consumer Price Index for March 2020 increased by 0.5 percent compared to the previous month.

- The Food and Non Alcoholic Beverages index increased by 1.8 percent.
- The Transport index decreased by 1.1 percent.
- The Average Annual Inflation for the year ended March 2020 was 2.0 percent.

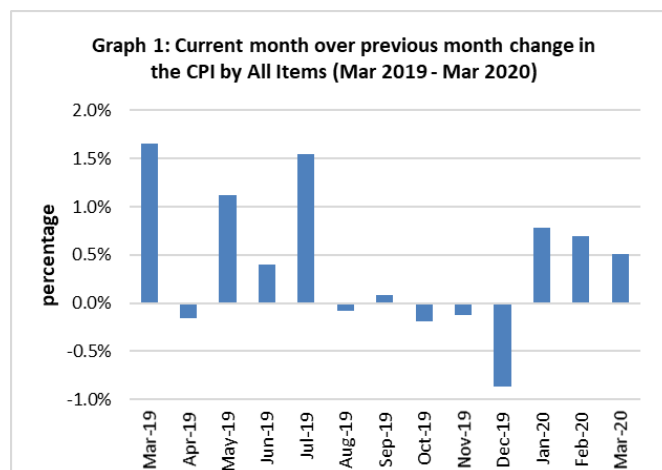
In the year to March 2020, the CPI rose 3.8 percent.

SUMMARY

The Consumer Price Index for March 2020 was 0.5 percent higher than February 2020, and was 3.8 percent higher than March 2019.

The increase of the Imported Goods component by 0.9 percent from the previous month was due to higher prices for imported food, which were also the main contributors to the increase of 0.5 percent in the All Items Consumer Price Index.

The Local Goods Component also registered an increase of 0.1 percent from the previous month. Graph 1 shows the month to month percentage changes in the Consumer Price Index by all Divisions from March 2019 to March 2020.

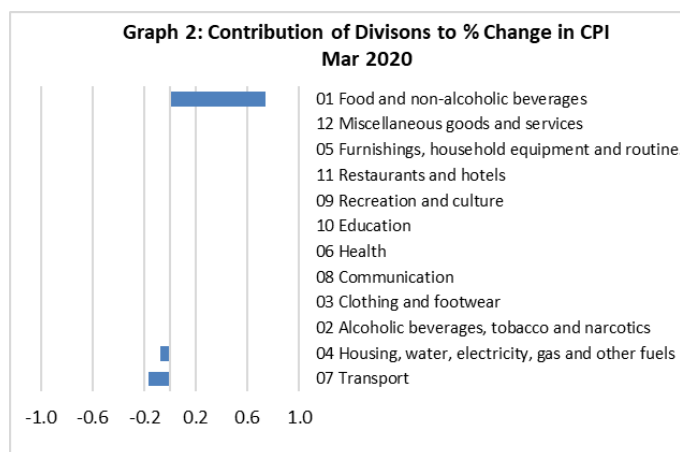


Source : Samoa Bureau of Statistics

Total All Divisions Contribution

As depicted in Graph 2, Food and Non Alcoholic Beverages division, with a positive contribution of 0.74 percent, was the main contributor to the overall increase of 0.5 percent in the All Division Consumer Price Index.

On the other hand, there were offsetting negative contributions from Transport with 0.17 and Housing, Water, Electricity, Gas and other Fuels division with 0.08 percent decreases.



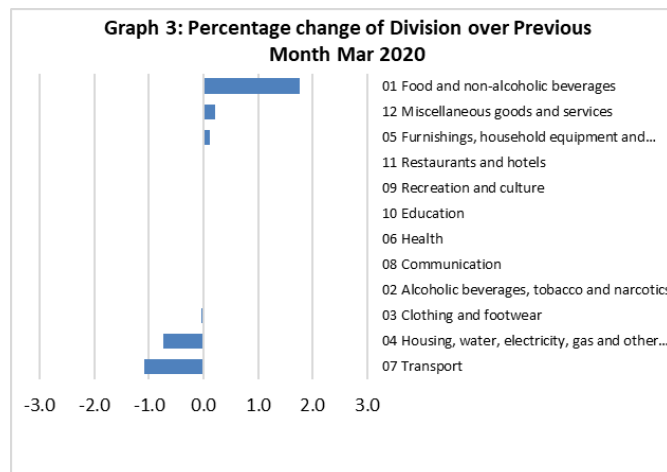
Source : Samoa Bureau of Statistics

Consumer Price Index (% Change)

The increases recorded for the Food and Non Alcoholic Beverages index from the previous month registered 1.8 percent, Miscellaneous Goods and Services index with 0.2 percent and Furnishing, Household Equipment and Maintenance index with 0.1 percent.

On the contrary, Transport and Housing, Water, Electricity, Gas and other Fuels indices both registered decreases of 1.1 and 0.7 percent respectively.

No changes were recorded for the Alcoholic Beverages and Tobacco, Clothing and Footwear, Health, Communication, Recreation and Culture, Education and Restaurants indices. Graphically presented in Graph 3 is the March 2020 percentage change for all divisions from February 2020.



Source : Samoa Bureau of Statistics

Imported Goods Component

The Imported Goods Component of the Consumer Price Index registered an increase of 0.9 percent when compared to the previous month. This increase was mainly due to higher prices recorded for imported food, toilet paper and mosquito coil.

Local Goods Component

Increased prices recorded for local food, jandals and ie solosolo have resulted in the 0.1 percent increase in the Local Goods Component.

Food and Non Alcoholic Beverages Index

An increase of 1.8 percent in the Food and Non Alcoholic Beverages index was a reflection of the higher prices recorded for chicken leg quarter, rice, canned fish (natural oil), fresh fish (piece), chinese cabbage, onion, canned beef, banana (ripe), coconut and head cabbage.

Transport Index

The 1.1 percent decrease in the Transport index was result in the lower prices recorded for fuel (petrol and diesel) and airline fare (Apia-Auckland-Apia).

Housing, Water, Electricity, Gas and other Fuels Index

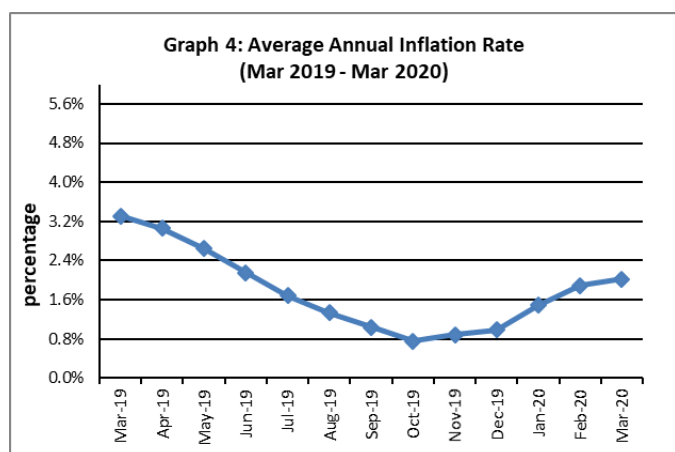
Lower prices recorded for electricity (kwh), kerosene, paint and timber is reflected in the 0.7 percent decrease in the Housing, Water, Electricity, Gas and other Fuels index.

Underlying Indices ^{1/}

The All Items Underlying Index for March 2020 registered an increase of 1.1 percent when compared to February 2020, and an increase of 3.5 percent when compared to March 2019. The Imported Items Underlying Index registered an increase of 1.6 percent, while Local Items Underlying Index recorded a decrease of 0.1 percent from the previous month.

Inflation Rate

The average annual inflation rate for the year ended March 2020 was 2.0 percent. For the twelve months ending March 2019 the inflation rate was 3.3 percent. Presented in Graph 4 is the Average annual inflation rate (March 2019 - March 2020).



Source : Samoa Bureau of Statistics

The attached Tables and Graphs provide the user with more detailed analysis.

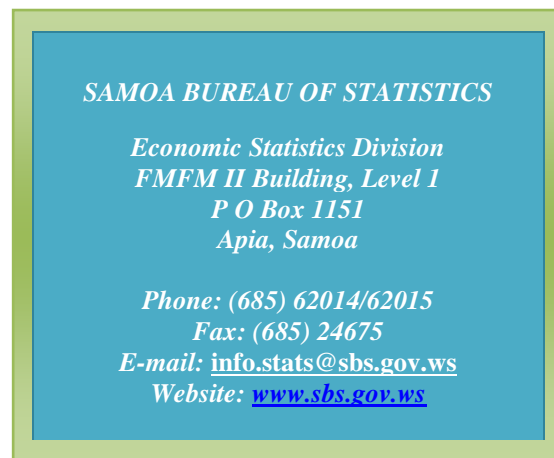
Technical Notes:

The Consumer Price (CPI) measures the rate of inflation for Samoa. It is designed to measure the change in prices for the goods purchased by households in Samoa. The CPI measures the change in prices by comparing the prices for a basket of goods and services at the collection period with the price for the same goods in a base period.

The basket of goods that is priced is based on the average expenditures of households as recorded in the Household Income and Expenditure Survey (HIES). The HIES survey identifies how much households spend on different items. The more households spend on an item on average, the more important it is to the price index, and the higher the weight in the index.

^{1/} Monthly movements in the 'headline' CPI series can be volatile. This volatility reflects price changes in particular items that may be due, among other factors, to fluctuations in commodity markets and agricultural conditions, policy changes, or seasonal or infrequent price resetting.

Underlying inflation is a measure of inflation that excludes certain items that face volatile price movements. Underlying inflation eliminates products that can have temporary price shocks because these shocks can diverge from the overall trend of inflation and give a false measure of inflation.



Date of release: 9th April 2020

The next Consumer Price Index will be released on 11th May 2020.

Aliimuamua Malaefono Tauā - T.Faasalaina
GOVERNMENT STATISTICIAN (CEO)

Table 1. CONSUMER PRICE INDEX.

(Base Period : Average Prices February 2016 = 100)

Group	All Items	Food and Non Alcoholic Beverages	Alcoholic Beverages, Tobacco and Narcotics	Clothing and Footwear	Housing, Water, Electricity, Gas and other Fuels	Furnishings, Household Equipment, and Maintenance	Health	Transport	Communication	Recreation and Culture	Education	Restaurants	Miscellaneous goods and services
<i>Weights</i>	1000.0	403.7	128.4	21.2	119.6	30.8	4.6	148.5	51.5	6.1	19.7	22.4	43.5
Ave - 2017	102.9	105.1	107.6	96.6	92.2	99.1	95.6	107.3	101.2	90.7	97.9	98.3	98.1
Ave - 2018	107.2	111.0	112.3	95.3	91.0	98.0	97.0	115.0	103.3	92.6	110.4	99.0	97.8
Ave - 2019	108.3	112.1	116.8	93.8	95.0	96.4	100.0	111.3	104.2	88.7	113.5	103.3	97.8
2019													
March	107.0	111.3	116.8	94.7	93.3	95.5	100.1	106.4	105.2	89.8	110.6	102.8	98.3
April	106.8	110.3	116.3	95.0	93.4	95.2	100.1	108.2	105.2	90.1	110.6	103.4	98.0
May	108.0	111.6	115.9	95.3	93.6	93.6	100.1	113.1	104.3	88.2	114.9	103.4	98.0
June	108.5	111.2	116.0	95.9	93.6	95.8	100.1	116.8	104.3	87.1	114.9	103.4	97.2
July	110.1	114.7	117.7	92.2	98.3	97.4	100.1	113.3	104.3	87.1	114.9	103.4	97.4
August	110.1	116.0	117.7	92.2	97.9	97.0	100.1	109.4	104.3	87.1	114.9	103.4	97.9
September	110.1	115.3	117.5	92.1	98.1	97.3	100.1	112.3	104.3	87.1	114.9	103.4	97.5
October	109.9	114.6	117.7	92.3	98.1	96.8	100.1	112.6	104.3	87.1	114.9	103.4	97.5
November	109.8	113.2	117.5	93.0	97.8	97.3	100.1	115.5	104.3	89.5	114.9	103.4	97.4
December	108.9	112.3	117.3	93.4	97.7	96.8	100.1	111.1	104.3	89.5	114.9	108.3	98.2
2020													
January	109.7	112.7	119.7	93.3	99.1	96.8	100.1	112.6	104.2	89.5	114.9	108.3	98.0
February	110.5	115.1	119.3	93.5	97.3	97.6	100.1	113.0	104.2	89.5	114.9	108.3	97.7
March (P)	111.0	117.1	119.3	93.5	96.6	97.7	100.1	111.8	104.2	89.5	114.9	108.3	97.9
<u>Percentage Change (P)</u>													
Mar 2020													
over	0.5%	1.8%	0.0%	0.0%	-0.7%	0.1%	0.0%	-1.1%	0.0%	0.0%	0.0%	0.0%	0.2%
Feb 2020													
Mar 2020													
over	3.8%	5.2%	2.1%	-1.3%	3.5%	2.3%	0.0%	5.0%	-0.9%	-0.3%	3.8%	5.3%	-0.4%
Mar 2019													

Source : Samoa Bureau Statistics

(P) : Provisional figures

Note : n.a. Not applicable


 Revised Figures

Table 2. ALL ITEMS UNDERLYING INDEX

(Base Period : Average Prices February 2016 = 100)

Group	All Items	Food and Non Alcoholic Beverages	Alcoholic Beverages, Tobacco and Narcotics	Clothing and Footwear	Housing, Water, Electricity, Gas and other Fuels	Furnishings, Household Equipment, and Maintenance	Health	Transport	Communication	Recreation and Culture	Education	Restaurants	Miscellaneous goods and services
<i>Weights</i>	586.7	345.3	<i>n.a</i>	21.2	24.2	30.8	3.5	26.4	51.5	5.6	12.3	22.4	43.5
<i>Ave - 2017</i>	104.1	107.9		96.6	93.8	99.1	94.2	104.2	101.2	90.0	96.7	98.3	98.1
<i>Ave - 2018</i>	106.6	110.8		95.3	93.4	98.0	96.0	110.8	103.3	92.0	114.0	99.0	97.8
<i>Ave - 2019</i>	107.2	111.6		93.8	94.6	96.4	100.1	108.1	104.2	87.9	118.5	103.3	97.8
2019													
March	106.5	110.5		94.7	94.7	95.5	100.1	107.4	105.2	89.0	113.9	102.8	98.3
April	106.1	109.8		95.0	94.6	95.2	100.1	108.4	105.2	89.3	113.9	103.4	98.0
May	106.4	110.3		95.3	94.6	93.6	100.1	108.4	104.3	87.3	120.6	103.4	98.0
June	106.7	110.8		95.9	94.1	95.8	100.1	108.4	104.3	86.2	120.6	103.4	97.2
July	108.4	113.7		92.2	94.5	97.4	100.1	108.4	104.3	86.2	120.6	103.4	97.4
August	109.1	114.9		92.2	94.5	97.0	100.1	108.4	104.3	86.2	120.6	103.4	97.9
September	109.4	115.4		92.1	94.4	97.3	100.1	109.1	104.3	86.2	120.6	103.4	97.5
October	109.3	115.1		92.3	94.8	96.8	100.1	109.1	104.3	86.2	120.6	103.4	97.5
November	109.0	114.5		93.0	94.8	97.3	100.1	109.1	104.3	88.7	120.6	103.4	97.4
December	108.4	113.3		93.4	94.9	96.8	100.1	106.9	104.3	88.7	120.6	108.3	98.2
2020													
January	107.2	111.3		93.3	94.8	96.8	100.1	106.9	104.2	88.7	120.6	108.3	98.0
February	109.1	114.5		93.5	94.6	97.6	100.1	106.9	104.2	88.7	120.6	108.3	97.7
March (P)	110.3	116.5		93.5	94.0	97.7	100.1	106.9	104.2	88.7	120.6	108.3	97.9
<u>Percentage Change (P)</u>													
Mar 2020													
over	1.1%	1.7%		0.0%	-0.6%	0.1%	0.0%	0.0%	0.0%	0.0%	0.0%	0.0%	0.2%
Feb 2020													
Mar 2020													
over	3.5%	5.4%		-1.3%	-0.8%	2.3%	0.0%	-0.5%	-0.9%	-0.4%	5.9%	5.3%	-0.4%
Mar 2019													

Source : Samoa Bureau Statistics

(P) : Provisional figures

Note : n.a. Not applicable

Table 3. AVERAGE RETAIL PRICES OF SELECTED COMMODITIES

Commodities	Wt	Unit	2019			2020		
			Jan	Feb	Mar	Jan	Feb	Mar (P)
01 Food and non-alcoholic beverages								
Leg Quarters Chicken	62.2	kg	3.13	3.74	4.19	4.41	4.81	5.12
Raw Sugar	21.3	kg	2.69	2.76	2.65	2.39	2.55	2.50
Bread	17.2	loaf	1.68	1.70	1.70	1.70	1.67	1.67
Corned Beef (a)	15.9	12 oz	8.13	8.13	8.13	8.03	8.03	8.12
Taro	15.2	kg	2.99	2.44	2.07	2.72	2.41	2.38
Re-packed medium grain rice	13.4	kg	3.18	3.10	2.96	2.90	2.87	2.93
Prepacked medium grain rice (a)	13.4	907g	3.02	3.10	2.98	2.82	2.82	2.77
Canned fish betw een \$3.00 and \$3.99 Natural Oil	12.7	15 oz	3.47	3.42	3.45	3.31	3.40	3.43
Bongo	10.2	20grms	0.81	0.81	0.79	0.80	0.80	0.80
Keke Saina Biscuits (a)	9.2	pkt 10	6.29	6.39	6.39	6.38	6.38	6.25
Tip Top Ice Cream (a)	9.2	2 ltr	15.32	15.32	15.32	15.33	15.33	15.33
Ramen maggie	9.0	85gms	1.11	1.08	1.08	1.07	1.08	1.08
Fish (Piece)	7.9	kg	19.02	16.08	21.67	23.28	21.27	22.70
Butter Anchor	7.7	454g	13.61	13.96	14.46	15.77	15.77	15.77
Round Pancake (a)	7.5	sml	0.15	0.15	0.15	0.15	0.15	0.15
Mutton Flaps	6.6	kg	22.34	22.02	21.81	23.09	23.24	23.77
Canned fish \$4:00 or over N/Oil	6.4	15 oz	4.88	5.22	5.21	4.98	4.81	4.85
Canned fish under \$3.00 in N/Oil	6.4	15 oz	2.53	2.52	2.55	2.62	2.62	2.70
Wings Turkey	6.3	kg	6.08	6.25	6.27	7.85	7.45	7.18
Fish (string)	6.0	kg	11.68	11.15	10.84	12.72	11.25	10.81
Fish (large)	6.0	kg	21.00	16.58	17.51	18.57	17.54	15.66
02 Alcoholic beverages, tobacco and narcotics								
Lager Beer	37.9	355 mls	3.60	3.64	3.64	3.67	3.63	3.64
Pall Mall Filter Cigarettes (Red)	24.3	20 rolls	13.40	13.40	13.40	14.20	14.20	14.20
Pall Mall Menthol Cigarettes (Green)	24.3	20 rolls	13.40	13.40	13.40	14.20	14.20	14.20
Beer (a)	16.3	330 mls	3.36	3.36	3.36	3.36	3.36	3.38
Winfield Tobacco (a)	12.6	packet	15.00	15.00	15.00	15.00	15.00	15.00
03 Clothing and footwear								
Uniform le Faitaga College boys	4.3	size 8-10	29.33	29.67	29.67	29.67	29.67	29.67
Uniform Pa'ave (a)	3.7	size 7	34.67	35.33	35.33	32.00	32.00	31.00
04 Housing, water, electricity, gas and other fuels								
Electricity / Cashpower / kw h 1- 100 / total cost per	50.6	kw h	0.58	0.58	0.67	0.69	0.65	0.64
Reservoir treated Water	28.5	15-40 m3	1.40	1.40	1.40	1.67	1.67	1.67
Liquid gas	15.8	9kg	62.00	62.00	62.00	62.00	62.00	62.00
Government house Rent	12.2	2 b/room	650.00	650.00	650.00	650.00	650.00	650.00
05 Furnishings, household equipment and routine household maintenance								
Washing powder (a)	6.3	200g	1.73	1.73	1.73	1.89	1.93	1.90
Soap yellow Washing soap	5.9	bar	2.90	2.75	2.69	2.76	2.75	2.75
Mosquito coil	4.4	10 coil	1.30	1.20	1.20	1.20	1.23	1.28

06 Health

Amoxicillin mg Tablets (a)	2.5	500 mg	7.92	7.92	7.58	7.58	7.58	7.58
Hospital Charge	1.1	night	22.50	22.50	22.50	22.50	22.50	22.50

07 Transport

Petrol	60.8	1 ltr	2.57	2.41	2.40	2.74	2.72	2.67
Taxi Fare PO Motootua Hosp	8.2	per trip	4.80	4.80	4.80	4.80	4.80	4.80
Taxi Fares PO Malua	8.2	per trip	31.30	31.30	31.30	31.30	31.30	31.30
Taxi Fares PO Falefa	8.2	per trip	43.20	43.20	43.20	43.20	43.20	43.20
Air Fares Fagalii Pago Fagalii	6.8	return trip	395.00	395.00	395.00	395.00	395.00	395.00
Air Fares Apia Auckland Apia	6.8	1 month	1066.87	1507.83	1259.11	1147.85	1313.02	1257.87

08 Communication

Calling per minute Rate cell phone (a)	10.02	per minute	0.45	0.45	0.45	0.43	0.43	0.43
Internet data bundles per mb Rate (a)	10.02	per mb	0.25	0.25	0.25	0.25	0.25	0.25
Calling per minute Rate cell phone (a)	10.02	per minute	0.44	0.44	0.44	0.44	0.44	0.44
Internet data bundles per mb Rate (a)	10.02	per mb	0.20	0.20	0.20	0.20	0.20	0.20

09 Recreation and culture

Television (a)	2.30	LCD	968.83	968.83	918.83	861.00	861.00	861.00
Exercise Book w arwick	1.44	1B4 64 pa	1.35	1.35	1.35	1.47	1.47	1.47
Laptop (a)	1.33	each	2878.60	2878.60	2938.60	2918.60	2918.60	2918.60

10 Education

Fees PTA Primary Y Urban Registration fees (a)	7.23	Year 6	82.50	82.50	82.50	82.50	82.50	82.50
Fees PTA Secondary Y Urban Registration fees (a)	5.11	Year 10	52.00	50.00	50.00	58.00	58.00	58.00
Fees Tertiary NUS registration School Fees	3.79	registratio	320.00	320.00	322.00	322.00	322.00	322.00
Fees Secondary Y Examination Fees (a)	3.61	Y12-13	25.50	25.50	25.50	25.50	25.50	25.50

11 Restaurants and hotels

Fish & Chip Meal	7.79	1 serve	9.17	9.17	9.17	9.17	9.17	9.17
Curry & Chopsuey Meal	4.87	1 serve	3.33	3.33	3.67	4.67	4.67	4.67
Chicken & Chips Meal (a)	4.87	1 serve	9.36	9.36	9.36	9.64	9.64	9.64
Steam rice & chicken Meal (a)	4.87	1 serve	4.83	4.83	4.83	4.83	4.83	4.83

12 Miscellaneous goods and services

Paper Sofan deluxe ply Toilet Paper	8.52	250 sheet:	1.01	1.04	1.03	1.01	1.01	1.04
Hair Gel	4.59	1124ml	4.36	4.36	4.40	4.60	4.51	4.46
Price for Storage of remains (a)	4.41	per day	60.00	60.00	60.00	60.00	60.00	60.00
Basic Casket (a)	4.41	each	1966.67	1966.67	1966.67	1966.67	1966.67	1966.67
Standard Embalming (a)	4.41	1 person	1500.00	1500.00	1500.00	1500.00	1500.00	1500.00
Toilet soap (a)	4.38	90g	1.85	1.88	1.89	1.95	1.96	1.96
Diapers (a)	4.19	5kg-10kg	9.21	9.21	9.14	8.63	8.49	8.33

Source : Samoa Bureau Statistics

(a) : New commodity from February 2016

(P) : Provisional figures

Note : Please note unit of conversion was in pound's (lb's) but been converted into kilograms (kg)

Table 4. IMPORTED GOODS COMPONENT OF THE CONSUMER PRICE INDEX
(Base Period : Average Prices February 2016 = 100)

Group	All Items	Food and Non Alcoholic Beverages	Alcoholic Beverages, Tobacco and Narcotics	Clothing and Footwear	Housing, Water , Electricity, Gas and other Fuels	Furnishings, Household Equipment and Maintenance	Health	Transport	Communication	Recreation and Culture	Education	Restaurants	Miscellaneous goods and services
<i>Weights</i>	494.7	269.1	23.8	15.2	28.3	26.9	2.5	88.6	<i>n.a</i>	5.6	<i>n.a</i>	<i>n.a</i>	34.7
<i>Ave - 2017</i>	107.3	110.1	110.0	97.0	97.6	98.9	91.7	111.2		90.0			97.1
<i>Ave - 2018</i>	111.9	113.8	113.5	96.1	100.6	97.6	94.3	124.0		92.0			96.6
<i>Ave - 2019</i>	111.1	114.5	118.3	93.7	100.8	95.8	97.9	117.3		87.9			96.7
2019													
March	109.2	113.2	119.5	94.8	99.8	94.8	97.5	110.3		89.0			97.2
April	109.3	112.4	119.6	95.1	100.5	94.5	97.5	113.4		89.3			96.9
May	110.6	112.7	119.3	95.5	101.2	92.6	97.5	120.3		87.3			96.9
June	111.9	113.5	119.3	96.3	101.2	95.2	97.5	124.2		86.2			95.9
July	113.4	117.0	119.7	91.2	101.5	96.9	97.5	122.0		86.2			96.2
August	112.8	118.5	118.2	91.2	100.0	96.5	97.5	114.9		86.2			96.8
September	113.8	119.1	118.1	91.3	100.7	96.8	97.5	118.8		86.2			96.2
October	113.5	118.8	117.9	92.4	100.8	96.3	97.5	118.1		86.2			96.2
November	113.7	118.1	118.7	93.4	101.3	96.9	97.5	120.5		88.7			96.1
December	112.4	116.3	117.8	93.4	101.0	96.3	97.5	118.8		88.7			97.2
2020													
January	111.5	113.8	117.8	93.4	101.0	96.3	97.5	121.4		88.7			96.9
February	113.8	118.1	117.8	93.4	101.3	97.2	97.5	120.8		88.7			96.5
March (P)	114.8	120.7	117.4	93.1	100.3	97.3	97.5	119.2		88.7			96.8
<u>Percentage Change (P)</u>													
Mar 2020 over Feb 2020	0.9%	2.2%	-0.4%	-0.4%	-0.9%	0.1%	0.0%	-1.4%		0.0%			0.3%
Mar 2020 over Mar 2019	5.2%	6.7%	-1.8%	-1.8%	0.6%	2.6%	0.0%	8.1%		-0.4%			-0.4%

Source : Samoa Bureau Statistics

(P) : Provisional figures

Note : n.a. Not applicable

Table 5. IMPORTED ITEMS UNDERLYING INDEX

(Base Period : Average Prices February 2016 = 100)

Group	All Items	Food and Non Alcoholic Beverages	Alcoholic Beverages, Tobacco and Narcotics	Clothing and Footwear	Housing, Water , Electricity, Gas and other Fuels	Furnishings, Household Equipment and Maintenance	Health	Transport	Communication	Recreation and Culture	Education	Restaurants	Miscellaneous goods and services
Weights	401.2	269.1	n.a	15.2	24.2	26.9	2.5	23.0	n.a	5.6	n.a	n.a	34.7
Ave - 2017	106.0	110.1		97.0	93.8	98.9	91.7	104.5		90.0			97.1
Ave - 2018	108.8	113.8		96.1	93.4	97.6	94.3	111.2		92.0			96.6
Ave - 2019	108.9	114.5		93.7	94.6	95.8	97.9	108.1		87.9			96.7
2019													
March	108.0	113.2		94.8	94.7	94.8	97.5	107.3		89.0			97.2
April	107.5	112.4		95.1	94.6	94.5	97.5	108.3		89.3			96.9
May	107.6	112.7		95.5	94.6	92.6	97.5	108.3		87.3			96.9
June	108.2	113.5		96.3	94.1	95.2	97.5	108.3		86.2			95.9
July	110.5	117.0		91.2	94.5	96.9	97.5	108.3		86.2			96.2
August	111.5	118.5		91.2	94.5	96.5	97.5	108.3		86.2			96.8
September	111.9	119.1		91.3	94.4	96.8	97.5	109.2		86.2			96.2
October	111.8	118.8		92.4	94.8	96.3	97.5	109.2		86.2			96.2
November	111.4	118.1		93.4	94.8	96.9	97.5	109.2		88.7			96.1
December	110.1	116.3		93.4	94.9	96.3	97.5	106.7		88.7			97.2
2020													
January	108.4	113.8		93.4	94.8	96.3	97.5	106.7		88.7			96.9
February	111.3	118.1		93.4	94.6	97.2	97.5	106.7		88.7			96.5
March (P)	113.0	120.7		93.1	94.0	97.3	97.5	106.7		88.7			96.8
<u>Percentage Change (P)</u>													
Mar 2020 over Feb 2020	1.6%	2.2%		-0.4%	-0.6%	0.1%	0.0%	0.0%		0.0%			0.3%
Mar 2020 over Mar 2019	4.7%	6.7%		-1.8%	-0.8%	2.6%	0.0%	-0.6%		-0.4%			-0.4%

Source : Samoa Bureau Statistics

(P) : Provisional figures

Note : n.a. Not applicable

Table 6. LOCAL GOODS COMPONENT OF THE CONSUMER PRICE INDEX
(Base Period : Average Prices February 2016 = 100)

Group	All Items	Food and Non Alcoholic Beverages	Alcoholic Beverages, Tobacco and Narcotics	Clothing and Footwear	Housing, Water , Electricity, Gas and other Fuels	Furnishings, Household Equipment and Maintenance	Health	Transport	Communication	Recreation and Culture	Education	Restaurants	Miscellaneous goods and services
Weights	505.3	134.6	104.6	6.0	91.3	3.9	2.2	59.9	51.5	0.4	19.7	22.4	8.8
Ave - 2017	98.6	95.0	107.1	95.7	90.6	100.1	100.0	101.6	101.2	100.0	97.9	98.3	102.3
Ave - 2018	102.6	105.3	112.0	93.3	88.1	100.3	100.0	101.7	103.3	100.0	110.4	99.0	102.3
Ave - 2019	105.5	107.3	116.5	93.8	93.2	100.3	102.5	102.3	104.2	100.0	113.5	103.3	102.3
2019													
March	104.9	107.5	116.2	94.2	91.3	100.3	103.0	100.7	105.2	100.0	110.6	102.8	102.3
April	104.4	106.2	115.6	94.6	91.3	100.3	103.0	100.5	105.2	100.0	110.6	103.4	102.3
May	105.5	109.4	115.1	94.7	91.3	100.3	103.0	102.4	104.3	100.0	114.9	103.4	102.3
June	105.2	106.5	115.3	94.7	91.3	100.3	103.0	105.7	104.3	100.0	114.9	103.4	102.3
July	107.0	110.1	117.2	94.7	97.3	100.3	103.0	100.4	104.3	100.0	114.9	103.4	102.3
August	107.4	111.1	117.5	94.7	97.3	100.3	103.0	101.2	104.3	100.0	114.9	103.4	102.3
September	106.6	107.5	117.3	94.2	97.3	100.3	103.0	102.6	104.3	100.0	114.9	103.4	102.3
October	106.4	106.1	117.6	92.1	97.3	100.3	103.0	104.5	104.3	100.0	114.9	103.4	102.3
November	106.0	103.6	117.2	92.1	96.7	100.3	103.0	108.1	104.3	100.0	114.9	103.4	102.3
December	105.4	104.1	117.2	93.3	96.7	100.3	103.0	99.7	104.3	100.0	114.9	108.3	102.3
2019													
January	108.0	110.5	120.1	92.9	98.6	100.3	103.0	99.6	104.2	100.0	114.9	108.3	102.3
February	107.3	109.0	119.7	93.7	96.0	100.3	103.0	101.4	104.2	100.0	114.9	108.3	102.3
March (P)	107.3	109.9	119.7	94.4	95.4	100.3	103.0	100.8	104.2	100.0	114.9	108.3	102.3
<u>Percentage Change (P)</u>													
Mar 2020 over Feb 2020	0.1%	0.8%	0.1%	0.8%	-0.7%	0.0%	0.0%	-0.5%	0.0%	0.0%	0.0%	0.0%	0.0%
Mar 2020 over Mar 2019	2.3%	2.2%	3.0%	0.2%	4.5%	0.0%	0.0%	0.1%	-0.9%	0.0%	3.8%	5.3%	0.0%

Source : Samoa Bureau Statistics

(P) : Provisional figures

Note : n.a. Not applicable

■ Revised Figures

Table 7. LOCAL ITEMS UNDERLYING INDEX

(Base Period : Average Prices February 2016 = 100)

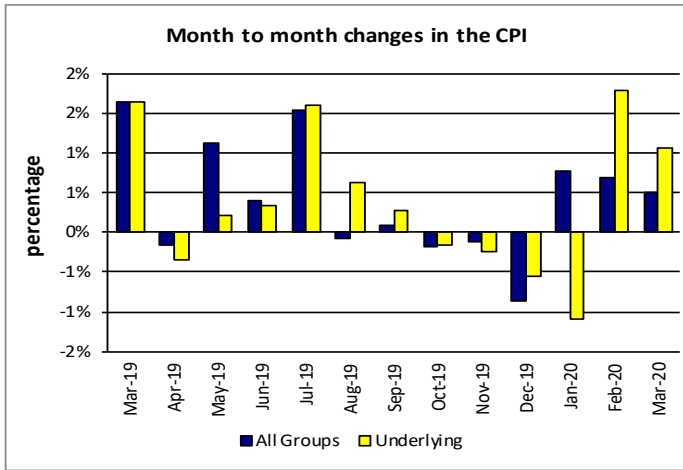
Group	All Items	Food and Non Alcoholic Beverages	Alcoholic Beverages, Tobacco and Narcotics	Clothing and Footwear	Housing, Water , Electricity, Gas and other Fuels	Furnishings, Household Equipment and Maintenance	Health	Transport	Communication	Recreation and Culture	Education	Restaurants	Miscellaneous goods and services
Weights	185.5	76.1	n.a	6.0	n.a	3.9	1.0	3.4	51.5	n.a	12.3	22.4	8.8
Ave - 2017	99.9	100.1		95.7		100.1	100.0	101.8	101.2		96.7	98.3	102.3
Ave - 2018	101.9	100.3		93.3		100.3	100.0	108.3	103.3		114.0	99.0	102.3
Ave - 2019	103.6	101.6		93.8		100.3	105.2	108.6	104.2		118.5	103.3	102.3
2019													
March	103.3	101.3		94.2		100.3	106.3	108.6	105.2		113.9	102.8	102.3
April	103.3	101.0		94.6		100.3	106.3	108.6	105.2		113.9	103.4	102.3
May	103.8	101.7		94.7		100.3	106.3	108.6	104.3		120.6	103.4	102.3
June	103.6	101.2		94.7		100.3	106.3	108.6	104.3		120.6	103.4	102.3
July	103.9	102.0		94.7		100.3	106.3	108.6	104.3		120.6	103.4	102.3
August	103.9	101.9		94.7		100.3	106.3	108.6	104.3		120.6	103.4	102.3
September	104.0	102.1		94.2		100.3	106.3	108.6	104.3		120.6	103.4	102.3
October	103.8	102.0		92.1		100.3	106.3	108.6	104.3		120.6	103.4	102.3
November	103.9	102.1		92.1		100.3	106.3	108.6	104.3		120.6	103.4	102.3
December	104.7	102.5		93.3		100.3	106.3	108.6	104.3		120.6	108.3	102.3
2019													
January	104.6	102.5		92.9		100.3	106.3	108.6	104.2		120.6	108.3	102.3
February	104.5	102.0		93.7		100.3	106.3	108.6	104.2		120.6	108.3	102.3
March (P)	104.4	101.7		94.4		100.3	106.3	108.6	104.2		120.6	108.3	102.3
<u>Percentage Change (P)</u>													
Mar 2020 over Feb 2020	-0.1%	-0.3%		0.8%		0.0%	0.0%	0.0%	0.0%		0.0%	0.0%	0.0%
Mar 2020 over Mar 2019	1.0%	0.4%		0.2%		0.0%	0.0%	0.0%	-0.9%		5.9%	5.3%	0.0%

Source : Samoa Bureau Statistics

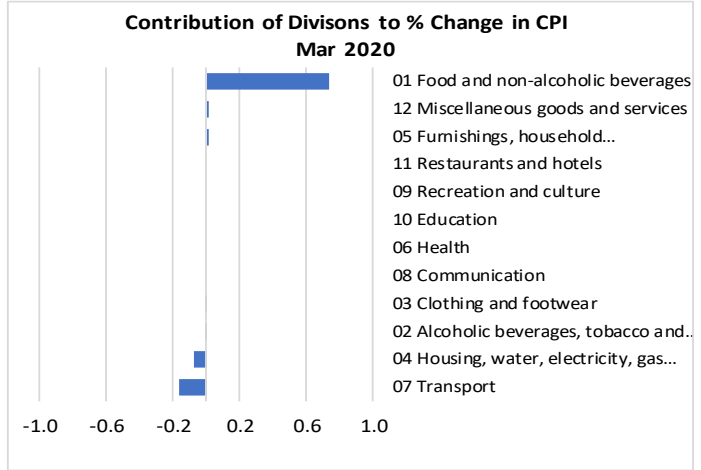
(P) : Provisional figures

Note : n.a. Not applicable

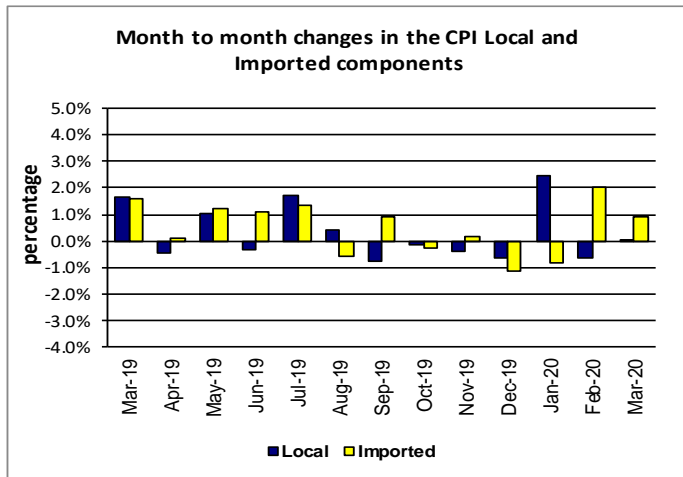
Graph.5



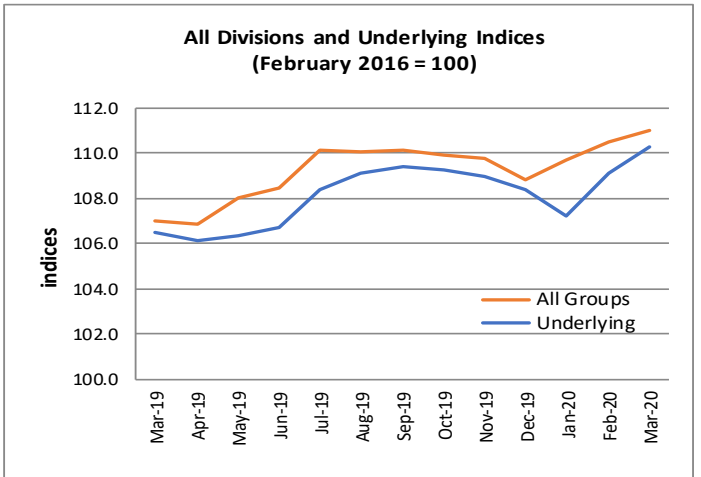
Graph.6



Graph.7



Graph.8



Graph.9

