

Please address all correspondence  
To Government Statistician  
In reply, please quote the file reference



File Ref: CPI 3/2021

GOVERNMENT OF SAMOA

## SAMOA BUREAU OF STATISTICS

# CONSUMER PRICE INDEX MARCH 2021

### Key findings:

The Consumer Price Index for March 2021 increased by 1.4 percent compared to the previous month.

- The Food and Non Alcoholic Beverages index increased by 2.4 percent.
- The Transport index also increased by 2.3 percent.
- The Average Annual Inflation for the year ended March 2021 was negative 3.8 percent.

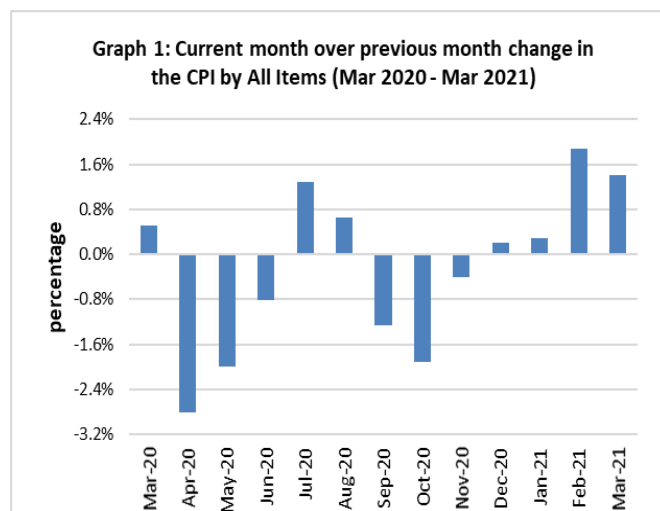
The CPI fell 3.5 percent from March 2020.

### SUMMARY

The Consumer Price Index for March 2021 was 1.4 percent higher than February 2021, and was 3.5 percent lower than March 2020.

The increase of the Imported Goods Component by 2.5 percent from the previous month was due to higher prices for imported food, fuel (petrol, diesel and kerosene) and washing powder which were also the main contributors to the increase of 1.4 percent in the All Items Consumer Price Index.

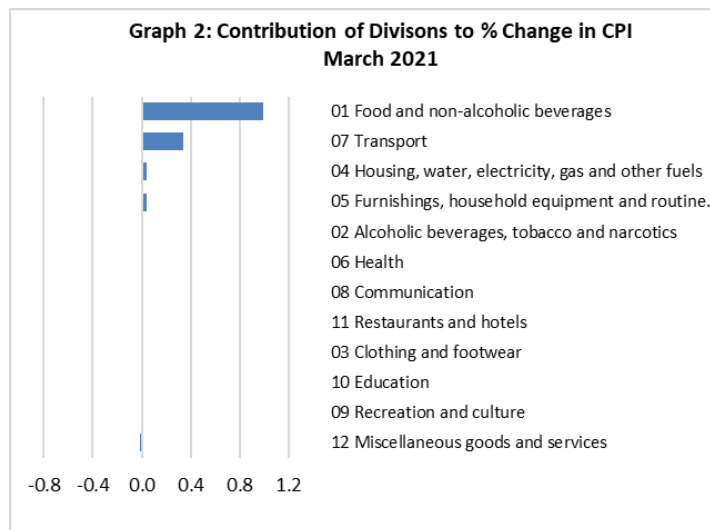
The Local Goods Component also registered an increase of 0.3 percent from the previous month. Graph 1 shows the month to month percentage changes in the Consumer Price Index by all Divisions from March 2020 to March 2021.



Source : Samoa Bureau of Statistics

## Total All Divisions Contribution

As depicted in Graph 2, Food and Non Alcoholic Beverages and Transport divisions were the main contributors to the overall increase of 1.4 percent in the All Division Consumer Price Index.



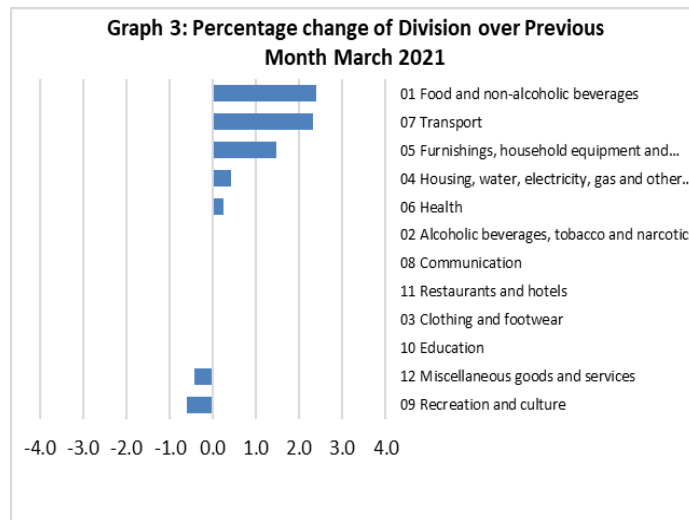
Source : Samoa Bureau of Statistics

## Consumer Price Index (% Change)

The increase recorded month on month for the Food and Non Alcoholic Beverages index with 2.4 percent, Transport index with 2.3 percent, Furnishing, Household Equipment and Maintenance index with 1.5 percent, Housing, Water, Electricity Gas and Other Fuel index with 0.4 percent and Health index with 0.3 percent.

On the contrary, Recreation and Culture index recorded a decrease of 0.6 percent and Miscellaneous Goods and Services also registered a decrease of 0.4 percent respectively.

No changes were recorded for the Alcoholic Beverages and Tobacco, Clothing and Footwear, Communication, Education and Restaurants indices. Graphically presented in Graph 3 is the March 2021 percentage change for all divisions from February 2021.



Source : Samoa Bureau of Statistics

## Imported Goods Component

The Imported Goods Component of the Consumer Price Index registered an increase of 2.5 percent when compared to the previous month. This increase was mainly due to higher prices recorded for imported food, fuel (petrol, diesel and kerosene), washing powder, washing soap and paints.

## Local Goods Component

Increased prices recorded for local food have resulted in the 0.3 percent increase in the local Goods Component.

## Food and Non Alcoholic Beverages Index

An increase of 2.4 percent in the Food and Non Alcoholic Beverages index was a reflection of the higher prices recorded for chicken leg quarter, taro, rice, fresh fish (piece and large), mutton flaps, turkey wings, koko samoa, chocolate cake, tomato and coconut.

## Transport Index

The Transport index recorded an increase of 2.3 percent due to increased prices recorded for fuel (petrol and diesel).

## Furnishings, Household Equipment, and Maintenance Index

The 1.5 percent increase in the Furnishings, Household Equipment, and Maintenance index was a result of the higher prices recorded for washing powder and washing soap.

## Housing, Water, Electricity, Gas and other Fuels Index

Higher prices recorded for kerosene and paints (high gloss and plus 2) is reflected in the 0.4 percent increase in the Housing, Water, Electricity, Gas and other Fuel index.

## Recreation and Culture Index

A decrease of 0.6 percent in the Recreation and Culture index was reflection of the lower prices recorded for television (LCD) and laptop.

## Miscellaneous Goods and Services Index

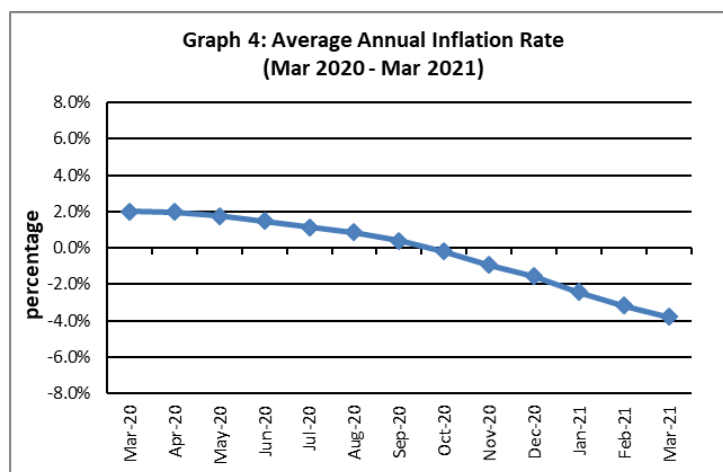
Lower prices recorded for toilet paper, toilet soap and diapers is reflected in the 0.4 percent decrease in the Miscellaneous Good and Services index.

## Underlying Indices <sup>1/</sup>

The All Items Underlying Index for March 2021 registered an increase of 1.6 percent when compared to February 2021, and a decrease of 2.3 percent when compared to March 2020. The Imported Items Underlying Index registered an increase of 2.3 percent, while Local Items Underlying Index also recorded an increase of 0.1 percent.

## Inflation Rate

The average annual inflation rate for the year ended March 2021 was negative 3.8 percent. For the twelve months ending March 2020 the inflation rate was 2.0 percent. Presented in Graph 4 is the Average annual inflation rate (March 2021 - March 2020).



Source : Samoa Bureau of Statistics

The attached Tables and Graphs provide the user with more detailed analysis.

## Technical Notes:

The Consumer Price (CPI) measures the rate of inflation for Samoa. It is designed to measure the change in prices for the goods purchased by households in Samoa. The CPI measures the change in prices by comparing the prices for a basket of goods and services at the collection period with the price for the same goods in a base period.

The basket of goods that is priced is based on the average expenditures of households as recorded in the Household Income and Expenditure Survey (HIES). The HIES survey identifies how much households spend on different items. The more households spend on an item on average, the more important it is to the price index, and the higher the weight in the index.

<sup>1/</sup> Monthly movements in the 'headline' CPI series can be volatile. This volatility reflects price changes in particular items that may be due, among other factors, to fluctuations in commodity markets and agricultural conditions, policy changes, or seasonal or infrequent price resetting.

Underlying inflation is a measure of inflation that excludes certain items that face volatile price movements. Underlying inflation eliminates products that can have temporary price shocks because these shocks can diverge from the overall trend of inflation and give a false measure of inflation.

**SAMOA BUREAU OF STATISTICS**

Economic Statistics Division  
FMFM II Building, Level 1  
P O Box 1151  
Apia, Samoa

Phone: (685) 62014/62015  
Fax: (685) 24675  
E-mail: [info.stats@sbs.gov.ws](mailto:info.stats@sbs.gov.ws)  
Website: [www.sbs.gov.ws](http://www.sbs.gov.ws)

Date of release: 15<sup>th</sup> April 2021

The next Consumer Price Index will be released on 12<sup>th</sup> May 2021.

Aliimuamua Malaefono Tauā - T.Faasalaina  
**GOVERNMENT STATISTICIAN/(CEO)**

**Table 1. CONSUMER PRICE INDEX.**

**(Base Period : Average Prices February 2016 = 100)**

Group	All Items	Food and Non Alcoholic Beverages	Alcoholic Beverages, Tobacco and Narcotics	Clothing and Footwear	Housing, Water, Electricity, Gas and other Fuels	Furnishings, Household Equipment, and Maintenance	Health	Transport	Communication	Recreation and Culture	Education	Restaurants	Miscellaneous goods and services
<i>Weights</i>	<b>1000.0</b>	<b>403.7</b>	<b>128.4</b>	<b>21.2</b>	<b>119.6</b>	<b>30.8</b>	<b>4.6</b>	<b>148.5</b>	<b>51.5</b>	<b>6.1</b>	<b>19.7</b>	<b>22.4</b>	<b>43.5</b>
<i>Ave - 2018</i>	107.2	111.0	112.3	95.3	91.0	98.0	97.0	115.0	103.3	92.6	110.4	99.0	97.8
<i>Ave - 2019</i>	108.3	112.1	116.8	93.8	95.0	96.4	100.0	111.3	104.2	88.7	113.5	103.3	97.8
<i>Ave - 2020</i>	106.6	110.4	120.0	93.5	89.6	98.1	99.2	104.4	104.2	88.5	114.9	109.4	98.8
<i>2020</i>													
<i>March</i>	111.0	117.1	119.3	93.5	96.6	97.7	100.1	111.8	104.2	89.5	114.9	108.3	97.9
<i>April</i>	107.9	113.2	118.9	93.5	86.3	98.1	100.1	109.8	104.2	88.0	114.9	108.3	98.8
<i>May</i>	105.8	110.5	118.9	93.5	86.0	98.8	100.1	102.3	104.2	88.0	114.9	108.3	99.7
<i>June</i>	104.9	110.6	119.1	93.5	85.4	98.5	97.6	96.8	104.2	88.0	114.9	108.3	99.9
<i>July</i>	106.3	113.1	120.8	93.4	85.4	97.7	97.6	97.8	104.2	88.0	114.9	108.3	99.8
<i>August</i>	107.0	113.7	121.0	93.7	85.2	98.3	97.6	100.8	104.2	88.6	114.9	108.9	99.3
<i>September</i>	105.6	108.9	120.9	93.7	88.7	98.0	97.6	101.6	104.2	88.6	114.9	111.4	98.9
<i>October</i>	103.6	103.7	120.9	93.7	88.4	98.0	97.6	102.6	104.2	88.1	114.9	111.4	98.5
<i>November</i>	103.2	102.8	120.9	93.7	88.3	98.5	99.4	102.2	104.2	88.1	114.9	111.4	98.5
<i>December</i>	103.4	103.3	120.4	93.3	88.5	98.8	102.4	102.2	104.2	88.1	114.9	111.4	99.1
<i>2021</i>													
<i>January</i>	103.7	105.0	121.8	93.4	83.6	99.6	103.6	102.1	104.2	87.3	114.9	111.0	99.0
<i>February</i>	105.6	108.5	121.5	92.7	87.3	98.1	104.8	104.7	104.2	87.6	109.4	111.0	97.7
<i>March (P)</i>	107.1	111.1	121.5	92.7	87.6	99.6	105.0	107.1	104.2	87.0	109.4	111.0	97.3
<b><u>Percentage Change (P)</u></b>													
<i>Mar 2021 over</i>	1.4%	2.4%	0.0%	0.0%	0.4%	1.5%	0.3%	2.3%	0.0%	-0.6%	0.0%	0.0%	-0.4%
<i>Feb 2021</i>													
<i>Mar 2021 over</i>	-3.5%	-5.2%	1.8%	-0.8%	-9.2%	1.9%	4.9%	-4.2%	0.0%	-2.8%	-4.7%	2.5%	-0.6%
<i>Mar 2020</i>													

Source : Samoa Bureau Statistics

(P) : Provisional figures

Note : n.a. Not applicable

**Table 2. ALL ITEMS UNDERLYING INDEX**

(Base Period : Average Prices February 2016 = 100)

Group	All Items	Food and Non Alcoholic Beverages	Alcoholic Beverages, Tobacco and Narcotics	Clothing and Footwear	Housing, Water, Electricity, Gas and other Fuels	Furnishings, Household Equipment, and Maintenance	Health	Transport	Communication	Recreation and Culture	Education	Restaurants	Miscellaneous goods and services
<i>Weights</i>	<b>586.7</b>	<b>345.3</b>	<i>n.a</i>	<b>21.2</b>	<b>24.2</b>	<b>30.8</b>	<b>3.5</b>	<b>26.4</b>	<b>51.5</b>	<b>5.6</b>	<b>12.3</b>	<b>22.4</b>	<b>43.5</b>
<i>Ave - 2018</i>	106.6	110.8		95.3	93.4	98.0	96.0	110.8	103.3	92.0	114.0	99.0	97.8
<i>Ave - 2019</i>	107.2	111.6		93.8	94.6	96.4	100.1	108.1	104.2	87.9	118.5	103.3	97.8
<i>Ave - 2020</i>	106.6	109.9		93.5	93.7	98.1	98.9	110.1	104.2	87.6	120.6	109.4	98.8
2020													
March	110.3	116.5		93.5	94.0	97.7	100.1	106.9	104.2	88.7	120.6	108.3	97.9
April	108.3	112.8		93.5	93.6	98.1	100.1	110.3	104.2	87.0	120.6	108.3	98.8
May	106.7	109.9		93.5	95.0	98.8	100.1	110.2	104.2	87.0	120.6	108.3	99.7
June	106.7	109.8		93.5	95.2	98.5	96.8	110.4	104.2	87.0	120.6	108.3	99.9
July	108.1	112.2		93.4	95.5	97.7	96.8	110.4	104.2	87.0	120.6	108.3	99.8
August	108.3	112.8		93.7	93.0	98.3	96.8	110.0	104.2	87.8	120.6	108.9	99.3
September	106.0	108.6		93.7	93.3	98.0	96.8	111.9	104.2	87.8	120.6	111.4	98.9
October	102.6	103.1		93.7	91.8	98.0	96.8	111.3	104.2	87.2	120.6	111.4	98.5
November	103.0	103.4		93.7	91.9	98.5	99.2	113.2	104.2	87.2	120.6	111.4	98.5
December	103.3	103.8		93.3	92.2	98.8	103.1	113.3	104.2	87.2	120.6	111.4	99.1
2021													
January	104.7	106.3		93.4	91.5	99.6	104.7	113.3	104.2	86.3	120.6	111.0	99.0
February	106.1	109.3		92.7	91.2	98.1	106.3	112.7	104.2	86.6	111.9	111.0	97.7
March (P)	107.8	111.9		92.7	92.4	99.6	106.7	114.0	104.2	86.0	111.9	111.0	97.3
<b><u>Percentage Change (P)</u></b>													
Mar 2021 over Feb 2021	1.6%	2.4%		0.0%	1.2%	1.5%	0.3%	1.1%	0.0%	-0.6%	0.0%	0.0%	-0.4%
Mar 2021 over Mar 2020	-2.3%	-3.9%		-0.8%	-1.7%	1.9%	6.6%	6.6%	0.0%	-3.0%	-7.2%	2.5%	-0.6%

Source : Samoa Bureau Statistics

(P) : Provisional figures

Note : n.a. Not applicable

**Table 3. AVERAGE RETAIL PRICES OF SELECTED COMMODITIES**

Commodities	Wt	Unit	2020			2021		
			Jan	Feb	Mar	Jan	Feb	Mar (P)
<b>01 Food and non-alcoholic beverages</b>								
Leg Quarters Chicken	62.2	kg	4.41	4.81	5.12	3.42	3.88	4.15
Raw Sugar	21.3	kg	2.39	2.55	2.50	2.51	2.53	2.57
Bread	17.2	loaf	1.70	1.67	1.67	1.64	1.64	1.64
Corned Beef (a)	15.9	340 grms	8.03	8.03	8.12	8.25	8.40	8.40
Taro	15.2	kg	2.72	2.41	2.38	1.71	1.64	1.71
Re-packed medium grain rice	13.4	kg	2.90	2.87	2.93	2.63	2.64	2.72
Prepacked medium grain rice (a)	13.4	907 grms	2.82	2.82	2.77	2.85	2.77	2.88
Canned fish between \$3.00 and \$3.99 Natural Oil	12.7	425 grms	3.31	3.40	3.43	3.41	3.30	3.34
Bongo	10.2	20 grms	0.80	0.80	0.80	0.83	0.83	0.83
Keke Saina Biscuits (a)	9.2	pkt 10	6.38	6.38	6.25	6.17	6.08	6.08
Ice Cream (a)	9.2	2 ltr	15.33	15.33	15.33	15.37	15.50	15.60
Ramen	9.0	85 grms	1.07	1.08	1.08	1.00	0.99	1.04
Fish (Piece)	7.9	kg	23.28	21.27	22.70	18.45	20.83	24.02
Butter	7.7	454 grms	15.77	15.77	15.77	15.76	15.76	15.80
Round Pancake (a)	7.5	sml	0.15	0.15	0.15	0.15	0.15	0.15
Mutton Flaps	6.6	kg	23.09	23.24	23.77	24.22	25.14	25.79
Canned fish \$4:00 or over N/Oil	6.4	425 grms	4.98	4.81	4.85	5.06	4.89	4.63
Canned fish under \$3.00 in N/Oil	6.4	425 grms	2.62	2.62	2.70	2.75	2.75	2.77
Wings Turkey	6.3	kg	7.85	7.45	7.18	7.94	8.19	8.69
Fish (string)	6.0	kg	12.72	11.25	10.81	10.06	10.24	9.67
Fish (large)	6.0	kg	18.57	17.54	15.66	15.87	16.25	16.36
<b>02 Alcoholic beverages, tobacco and narcotics</b>								
Lager Beer	37.9	355 mls	3.67	3.63	3.64	3.68	3.66	3.66
Pall Mall Filter Cigarettes (Red)	24.3	20 rolls	14.20	14.20	14.20	14.60	14.60	14.60
Pall Mall Menthol Cigarettes (Green)	24.3	20 rolls	14.20	14.20	14.20	14.60	14.60	14.60
Beer (a)	16.3	330 mls	3.36	3.36	3.38	3.50	3.50	3.49
Tobacco (a)	12.6	30 grms	15.00	15.00	15.00	15.00	15.00	15.00
<b>03 Clothing and footwear</b>								
Uniform le Faitaga College boys	4.3	size 8-10	29.67	29.67	29.67	29.67	29.67	29.67
Uniform Pa'ave (a)	3.7	size 7	32.00	32.00	31.00	31.00	29.67	29.67
<b>04 Housing, water, electricity, gas and other fuels</b>								
Electricity Cashpower	50.6	kw h	0.69	0.65	0.64	0.48	0.48	0.48
Reservoir treated Water	28.5	15-40 m3	1.67	1.67	1.67	1.47	1.67	1.67
Liquid gas	15.8	9kg	62.00	62.00	62.00	59.00	59.00	59.25
Government house Rent	12.2	2 b/room	650.00	650.00	650.00	650.00	650.00	650.00
<b>05 Furnishings, household equipment and routine household maintenance</b>								
Washing powder (a)	6.3	200 grms	1.89	1.93	1.90	1.88	1.79	1.88
Soap yellow Washing soap	5.9	bar	2.76	2.75	2.75	2.90	2.87	2.89
Mosquito coil	4.4	10 coil	1.20	1.23	1.28	1.33	1.33	1.33

---

## 06 Health

Amoxicillin 500mg tablets (a)	2.5	20 tablets	7.58	7.58	7.58	7.67	8.00	8.00
Hospital Charge	1.1	per night	22.50	22.50	22.50	22.50	22.50	22.50

---

## 07 Transport

Petrol	60.8	1 ltr	2.74	2.72	2.67	2.17	2.30	2.41
Taxi Fare P.O to Motootua Hosp	8.2	per trip	4.80	4.80	4.80	4.80	4.80	4.80
Taxi Fares P.O to Malua	8.2	per trip	31.30	31.30	31.30	31.30	31.30	31.30
Taxi Fares P.O to Falefa	8.2	per trip	43.20	43.20	43.20	43.20	43.20	43.20
Air Fares Fagalii Pago Fagalii	6.8	return trip	395.00	395.00	395.00	395.00	395.00	395.00
Air Fares Apia Auckland Apia	6.8	1 month	1147.85	1313.02	1257.87	1257.87	1257.87	1257.87

---

## 08 Communication

Calling per minute Rate cell phone (a)	10.02	per minute	0.43	0.43	0.43	0.43	0.43	0.43
Internet data bundles per mb Rate (a)	10.02	per mb	0.25	0.25	0.25	0.25	0.25	0.25
Calling per minute Rate cell phone (a)	10.02	per minute	0.44	0.44	0.44	0.44	0.44	0.44
Internet data bundles per mb Rate (a)	10.02	per mb	0.20	0.20	0.20	0.20	0.20	0.20

---

## 09 Recreation and culture

Television LCD 32" (a)	2.30	LCD 32"	861.00	861.00	861.00	852.83	861.00	852.83
Exercise Book w arw ick	1.44	1B4	1.47	1.47	1.47	1.37	1.37	1.37
Laptop (a)	1.33	each	2918.60	2918.60	2918.60	2938.60	2938.60	2898.60

---

## 10 Education

Fees PTA Primary Y Urban Registration fees (a)	7.23	Year 6	82.50	82.50	82.50	82.50	72.50	72.50
Fees PTA Secondary Y Urban Registration fees (a)	5.11	Year 10	58.00	58.00	58.00	58.00	58.00	58.00
Fees Tertiary NUS registration School Fees	3.79	registration	322.00	322.00	322.00	322.00	322.00	322.00
Fees Secondary Y Examination Fees (a)	3.61	Y12-13	25.50	25.50	25.50	25.50	25.50	25.50

---

## 11 Restaurants and hotels

Fish & Chip Meal	7.79	1 serve	9.17	9.17	9.17	10.08	10.08	10.08
Curry & Chopsuey Meal	4.87	1 serve	4.67	4.67	4.67	4.00	4.00	4.00
Chicken & Chips Meal (a)	4.87	1 serve	9.64	9.64	9.64	10.29	10.29	10.29
Steam rice & chicken Meal (a)	4.87	1 serve	4.83	4.83	4.83	5.00	5.00	5.00

---

## 12 Miscellaneous goods and services

Paper Sofan deluxe ply Toilet Paper	8.52	250 sheets	1.01	1.01	1.04	1.05	1.00	0.99
Hair Gel	4.59	1124 ml	4.60	4.51	4.46	4.76	4.76	4.76
Price for Storage of remains (a)	4.41	per day	60.00	60.00	60.00	60.00	60.00	60.00
Basic Casket (a)	4.41	each	1966.67	1966.67	1966.67	1966.67	1966.67	1966.67
Standard Embalming (a)	4.41	1 person	1500.00	1500.00	1500.00	1500.00	1500.00	1500.00
Toilet soap (a)	4.38	90g	1.95	1.96	1.96	1.97	1.93	1.92
Diapers (a)	4.19	5kg-10kg	8.63	8.49	8.33	8.14	8.09	7.89

---

Source : Samoa Bureau Statistics

(a) : New commodity from February 2016

(P) : Provisional figures

Note : Please note unit of conversion was in pound's (lb's) but been converted into kilograms (kg)



**Table 4. IMPORTED GOODS COMPONENT OF THE CONSUMER PRICE INDEX**  
(Base Period : Average Prices February 2016 = 100)

Group	All Items	Food and Non Alcoholic Beverages	Alcoholic Beverages, Tobacco and Narcotics	Clothing and Footwear	Housing, Water, Electricity, Gas and other Fuels	Furnishings, Household Equipment and Maintenance	Health	Transport	Communication	Recreation and Culture	Education	Restaurants	Miscellaneous goods and services
<i>Weights</i>	<b>494.7</b>	<b>269.1</b>	<b>23.8</b>	<b>15.2</b>	<b>28.3</b>	<b>26.9</b>	<b>2.5</b>	<b>88.6</b>	<i>n.a</i>	<b>5.6</b>	<i>n.a</i>	<i>n.a</i>	<b>34.7</b>
<i>Ave - 2018</i>	111.9	113.8	113.5	96.1	100.6	97.6	94.3	124.0		92.0			96.6
<i>Ave - 2019</i>	111.1	114.5	118.3	93.7	100.8	95.8	97.9	117.3		87.9			96.7
<i>Ave - 2020</i>	107.9	112.2	117.1	93.2	96.0	97.7	95.8	107.4		87.6			98.0
2020													
March	114.8	120.7	117.4	93.1	100.3	97.3	97.5	119.2		88.7			96.8
April	111.6	116.0	117.4	93.1	98.0	97.8	97.5	115.8		87.0			97.9
May	107.7	112.6	117.4	93.1	96.7	98.6	97.5	104.0		87.0			99.0
June	105.7	112.4	117.4	93.1	94.3	98.3	92.7	94.7		87.0			99.3
July	107.6	115.2	117.4	93.0	94.4	97.3	92.7	96.4		87.0			99.2
August	108.8	115.9	117.4	93.4	93.6	98.0	92.7	101.4		87.8			98.5
September	105.9	110.4	116.1	93.4	94.1	97.7	92.7	102.7		87.8			98.0
October	102.2	103.2	116.1	93.4	92.8	97.6	92.7	104.4		87.2			97.5
November	102.4	103.7	117.1	93.4	92.3	98.2	96.3	103.8		87.2			97.5
December	102.7	104.1	115.8	92.9	93.0	98.5	101.8	103.8		87.2			98.3
2021													
January	104.6	107.3	117.9	93.1	93.0	99.5	104.1	103.7		86.3			98.2
February	107.3	111.1	117.9	92.3	93.9	97.8	106.4	107.9		86.6			96.5
March (P)	109.9	114.5	117.9	92.3	95.5	99.5	106.9	112.0		86.0			96.0
<b><u>Percentage Change (P)</u></b>													
Mar 2021 over	2.5%	3.0%	0.0%	0.0%	1.7%	1.7%	0.5%	3.7%		-0.6%			-0.6%
Feb 2021													
Mar 2021 over	-4.3%	-5.2%	0.5%	-0.8%	-4.8%	2.2%	9.6%	-6.0%		-3.0%			-0.8%
Mar 2020													

Source : Samoa Bureau Statistics

(P) : Provisional figures

Note : n.a. Not applicable



**Table 5. IMPORTED ITEMS UNDERLYING INDEX**

**(Base Period : Average Prices February 2016 = 100)**

Group	All Items	Food and Non Alcoholic Beverages	Alcoholic Beverages, Tobacco and Narcotics	Clothing and Footwear	Housing, Water , Electricity, Gas and other Fuels	Furnishings, Household Equipment and Maintenance	Health	Transport	Communication	Recreation and Culture	Education	Restaurants	Miscellaneous goods and services
<b>Weights</b>	<b>401.2</b>	<b>269.1</b>	<b>n.a</b>	<b>15.2</b>	<b>24.2</b>	<b>26.9</b>	<b>2.5</b>	<b>23.0</b>	<b>n.a</b>	<b>5.6</b>	<b>n.a</b>	<b>n.a</b>	<b>34.7</b>
Ave - 2018	108.8	113.8		96.1	93.4	97.6	94.3	111.2		92.0			96.6
Ave - 2019	108.9	114.5		93.7	94.6	95.8	97.9	108.1		87.9			96.7
Ave - 2020	107.6	112.2		93.2	93.7	97.7	95.8	110.4		87.6			98.0
2020													
March	113.0	120.7		93.1	94.0	97.3	97.5	106.7		88.7			96.8
April	110.2	116.0		93.1	93.6	97.8	97.5	110.6		87.0			97.9
May	108.1	112.6		93.1	95.0	98.6	97.5	110.4		87.0			99.0
June	108.0	112.4		93.1	95.2	98.3	92.7	110.7		87.0			99.3
July	109.8	115.2		93.0	95.5	97.3	92.7	110.7		87.0			99.2
August	110.1	115.9		93.4	93.0	98.0	92.7	110.2		87.8			98.5
September	106.5	110.4		93.4	93.3	97.7	92.7	112.4		87.8			98.0
October	101.4	103.2		93.4	91.8	97.6	92.7	111.7		87.2			97.5
November	102.0	103.7		93.4	91.9	98.2	96.3	113.9		87.2			97.5
December	102.4	104.1		92.9	92.2	98.5	101.8	113.9		87.2			98.3
2021													
January	104.5	107.3		93.1	91.5	99.5	104.1	113.9		86.3			98.2
February	106.8	111.1		92.3	91.2	97.8	106.4	113.3		86.6			96.5
March (P)	109.3	114.5		92.3	92.4	99.5	106.9	114.8		86.0			96.0
<b><u>Percentage Change (P)</u></b>													
Mar 2021 over Feb 2021	2.3%	3.0%		0.0%	1.2%	1.7%	0.5%	1.3%		-0.6%			-0.6%
Mar 2021 over Mar 2020	-3.3%	-5.2%		-0.8%	-1.7%	2.2%	9.6%	7.6%		-3.0%			-0.8%

Source : Samoa Bureau Statistics

(P) : Provisional figures

Note : n.a. Not applicable

**Table 6. LOCAL GOODS COMPONENT OF THE CONSUMER PRICE INDEX**  
(Base Period : Average Prices February 2016 = 100)

Group	All Items	Food and Non Alcoholic Beverages	Alcoholic Beverages, Tobacco and Narcotics	Clothing and Footwear	Housing, Water, Electricity, Gas and other Fuels	Furnishings, Household Equipment and Maintenance	Health	Transport	Communication	Recreation and Culture	Education	Restaurants	Miscellaneous goods and services
<b>Weights</b>	<b>505.3</b>	<b>134.6</b>	<b>104.6</b>	<b>6.0</b>	<b>91.3</b>	<b>3.9</b>	<b>2.2</b>	<b>59.9</b>	<b>51.5</b>	<b>0.4</b>	<b>19.7</b>	<b>22.4</b>	<b>8.8</b>
Ave - 2018	102.6	105.3	112.0	93.3	88.1	100.3	100.0	101.7	103.3	100.0	110.4	99.0	102.3
Ave - 2019	105.5	107.3	116.5	93.8	93.2	100.3	102.5	102.3	104.2	100.0	113.5	103.3	102.3
Ave - 2020	105.3	106.8	120.7	94.2	87.6	100.3	103.0	100.1	104.2	100.0	114.9	109.4	102.3
2020													
March	107.3	109.9	119.7	94.4	95.4	100.3	103.0	100.8	104.2	100.0	114.9	108.3	102.3
April	104.3	107.5	119.3	94.4	82.6	100.3	103.0	100.8	104.2	100.0	114.9	108.3	102.3
May	103.9	106.4	119.3	94.4	82.6	100.3	103.0	99.9	104.2	100.0	114.9	108.3	102.3
June	104.1	106.9	119.5	94.4	82.6	100.3	103.0	99.9	104.2	100.0	114.9	108.3	102.3
July	105.0	108.8	121.6	94.4	82.6	100.3	103.0	99.9	104.2	100.0	114.9	108.3	102.3
August	105.2	109.2	121.8	94.4	82.6	100.3	103.0	99.9	104.2	100.0	114.9	108.9	102.3
September	105.3	105.9	122.0	94.4	87.1	100.3	103.0	99.9	104.2	100.0	114.9	111.4	102.3
October	105.0	104.8	121.9	94.4	87.1	100.3	103.0	99.9	104.2	100.0	114.9	111.4	102.3
November	103.9	100.8	121.8	94.4	87.1	100.3	103.0	99.9	104.2	100.0	114.9	111.4	102.3
December	104.0	101.6	121.5	94.4	87.1	100.3	103.0	99.9	104.2	100.0	114.9	111.4	102.3
2021													
January	102.8	100.4	122.7	94.4	80.7	100.3	103.0	99.9	104.2	100.0	114.9	111.0	102.3
February	104.0	103.1	122.3	93.6	85.2	100.3	103.0	99.9	104.2	100.0	109.4	111.0	102.3
March (P)	104.3	104.3	122.3	93.6	85.2	100.3	103.0	100.0	104.2	100.0	109.4	111.0	102.3
<b><u>Percentage Change (P)</u></b>													
Mar 2021 over Feb 2021	0.3%	1.1%	0.0%	0.0%	0.0%	0.0%	0.0%	0.1%	0.0%	0.0%	0.0%	0.0%	0.0%
Mar 2021 over Mar 2020	-2.8%	-5.1%	2.2%	-0.9%	-10.7%	0.0%	0.0%	-0.9%	0.0%	0.0%	-4.7%	2.5%	0.0%

Source : Samoa Bureau Statistics

(P) : Provisional figures

Note : n.a. Not applicable

**Table 7. LOCAL ITEMS UNDERLYING INDEX**

(Base Period : Average Prices February 2016 = 100)

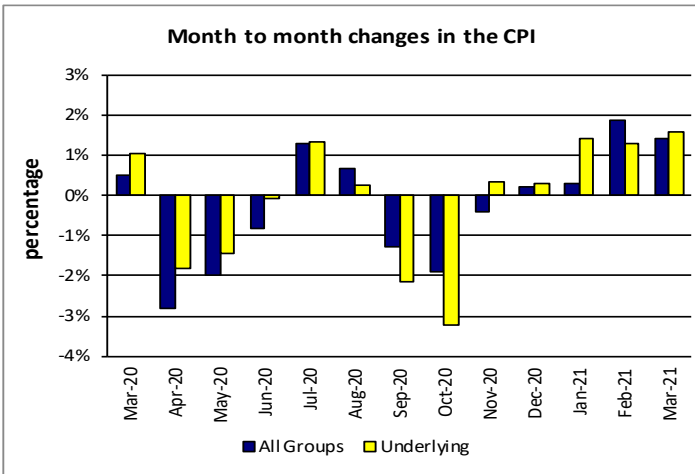
Group	All Items	Food and Non Alcoholic Beverages	Alcoholic Beverages, Tobacco and Narcotics	Clothing and Footwear	Housing, Water, Electricity, Gas and other Fuels	Furnishings, Household Equipment and Maintenance	Health	Transport	Communication	Recreation and Culture	Education	Restaurants	Miscellaneous goods and services
<b>Weights</b>	<b>185.5</b>	<b>76.1</b>	<b>n.a</b>	<b>6.0</b>	<b>n.a</b>	<b>3.9</b>	<b>1.0</b>	<b>3.4</b>	<b>51.5</b>	<b>n.a</b>	<b>12.3</b>	<b>22.4</b>	<b>8.8</b>
Ave - 2018	101.9	100.3		93.3		100.3	100.0	108.3	103.3		114.0	99.0	102.3
Ave - 2019	103.6	101.6		93.8		100.3	105.2	108.6	104.2		118.5	103.3	102.3
Ave - 2020	104.6	101.9		94.2		100.3	106.3	108.6	104.2		120.6	109.4	102.3
2020													
March	104.4	101.7		94.4		100.3	106.3	108.6	104.2		120.6	108.3	102.3
April	104.2	101.3		94.4		100.3	106.3	108.6	104.2		120.6	108.3	102.3
May	103.8	100.4		94.4		100.3	106.3	108.6	104.2		120.6	108.3	102.3
June	103.9	100.5		94.4		100.3	106.3	108.6	104.2		120.6	108.3	102.3
July	104.3	101.7		94.4		100.3	106.3	108.6	104.2		120.6	108.3	102.3
August	104.6	102.1		94.4		100.3	106.3	108.6	104.2		120.6	108.9	102.3
September	105.0	102.4		94.4		100.3	106.3	108.6	104.2		120.6	111.4	102.3
October	105.2	102.7		94.4		100.3	106.3	108.6	104.2		120.6	111.4	102.3
November	105.0	102.4		94.4		100.3	106.3	108.6	104.2		120.6	111.4	102.3
December	105.2	102.8		94.4		100.3	106.3	108.6	104.2		120.6	111.4	102.3
2021													
January	105.2	102.8		94.4		100.3	106.3	108.6	104.2		120.6	111.0	102.3
February	104.5	102.8		93.6		100.3	106.3	108.6	104.2		111.9	111.0	102.3
March (P)	104.6	103.0		93.6		100.3	106.3	108.6	104.2		111.9	111.0	102.3
<b><u>Percentage Change (P)</u></b>													
Mar 2021 over Feb 2021	0.1%	0.2%		0.0%		0.0%	0.0%	0.0%	0.0%		0.0%	0.0%	0.0%
Mar 2021 over Mar 2020	0.2%	1.3%		-0.9%		0.0%	0.0%	0.0%	0.0%		-7.2%	2.5%	0.0%

Source : Samoa Bureau Statistics

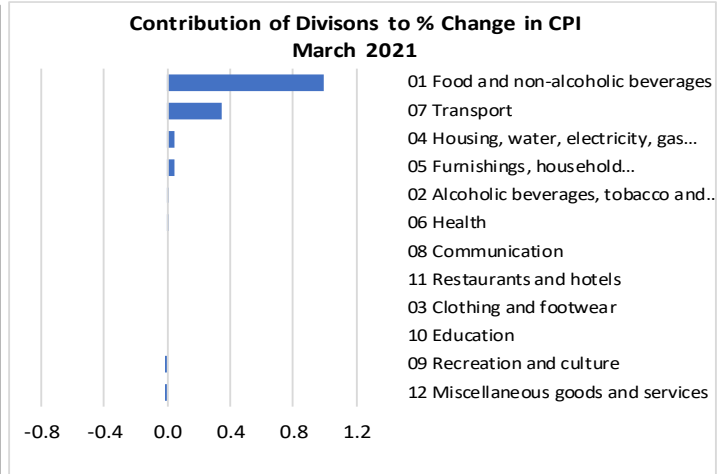
(P) : Provisional figures

Note : n.a. Not applicable

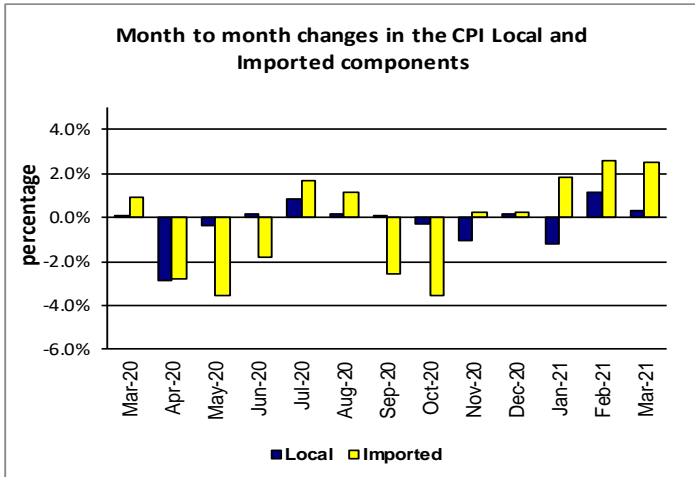
**Graph.5**



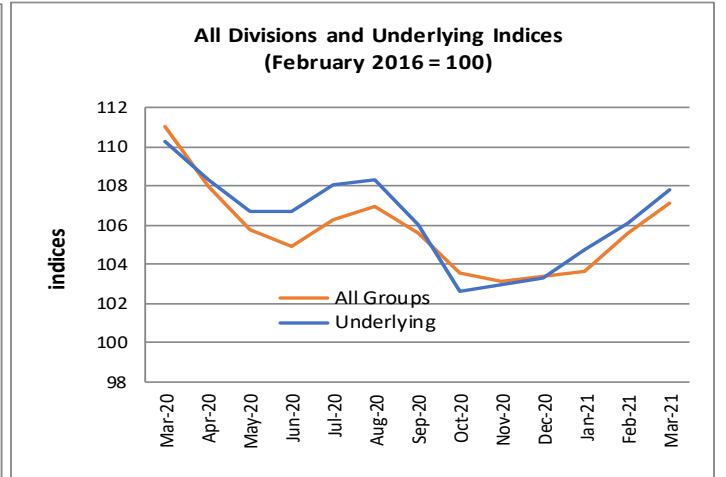
**Graph.6**



**Graph.7**



**Graph.8**



**Graph.9**

