

Please address all correspondence
To Government Statistician
In reply, please quote the file reference



GOVERNMENT OF SAMOA

File Ref: CPI 4/2021

SAMOA BUREAU OF STATISTICS

CONSUMER PRICE INDEX APRIL 2021

Key findings:

The Consumer Price Index for April 2021 remained unchanged compared to the previous month.

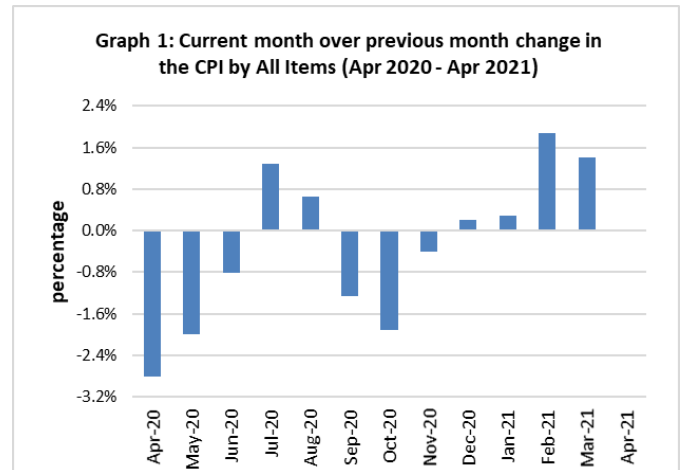
- The Transport index increased by 2.3 percent.
- The Food and Non Alcoholic Beverages index decreased by 1.2 percent.
- The Average Annual Inflation for the year ended April 2021 was negative 3.9 percent.

The CPI fell 0.8 percent from April 2020.

SUMMARY

The Consumer Price Index for April 2021 registered no change from March 2021 and was 0.8 percent lower than April 2020.

The decrease of the Local Goods Component by 0.8 percent reflects lower prices for local food, while Imported Component recorded an increase of 0.7 percent from the previous month was due to higher prices for fuel (petrol, diesel and kerosene). Graph 1 shows the month to month percentage changes in the Consumer Price Index by All Divisions from April 2020 to April 2021.

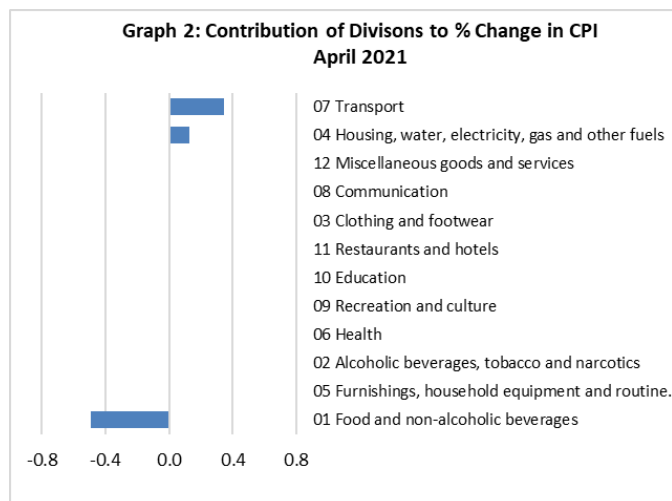


Source : Samoa Bureau of Statistics

Total All Divisions Contribution

As depicted in Graph 2, Food and Non Alcoholic Beverages division, with a negative contribution of 0.49 percent.

On the other hand, there were offsetting positive contribution from Transport and Housing, Water, Electricity, with a positive contribution of 0.34 and 0.13 percent.



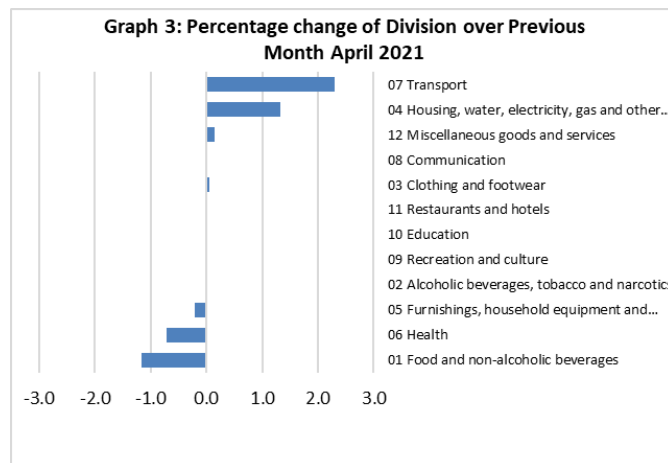
Source : Samoa Bureau of Statistics

Consumer Price Index (% Change)

The increases recorded for the Transport index from the previous month registered 2.3 percent, Housing, Water, Electricity Gas and Other Fuel with 1.3 percent and Miscellaneous Goods and Services with 0.2 percent.

On the contrary, Food and Non Alcoholic Beverages index recorded a decrease of 1.2 percent while Health and Furnishing, Household Equipment and Maintenance indices also registered decreases of 0.7 and 0.2 percent respectively.

No changes were recorded for the All Items, Alcoholic Beverages and Tobacco, Clothing and Footwear, Communication, Recreation and Culture, Education and Restaurants indices. Graphically presented in Graph 3 is the April 2021 percentage change for all divisions from March 2021.



Source : Samoa Bureau of Statistics

Local Goods Component

The Local Goods Component of the Consumer Price Index recorded a decrease of 0.8 percent when compared to the previous month. This decrease was mainly due to lower prices recorded for taro, fresh fish (piece and large), stewing beef, koko samoa, banana, cucumber and head cabbage.

Imported Goods Component

Increased prices recorded for fuel (petrol, diesel and kerosene) have resulted in the 0.7 percent increase in the imported Good Component.

Transport Index

Higher prices recorded for fuel (petrol and diesel) is reflected in the 2.3 percent increase in the Transport index.

Housing, Water, Electricity, Gas and other Fuels Index

Increased prices recorded for electricity (kwh) and kerosene is reflected in the 1.3 percent increase in the Housing, Water, Electricity, Gas and other Fuels index.

Food and Non Alcoholic Beverages Index

A decrease of 1.2 percent in the Food and Non Alcoholic Beverages index was a reflection of the lower prices recorded for taro, rice, fresh fish (piece and large), mutton flap, onion, stewing beef, koko samoa, banana, cucumber and head cabbage.

Health Index

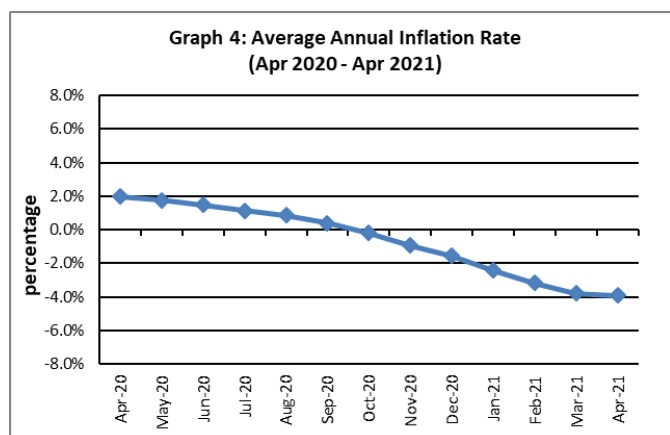
The 0.7 percent decrease in the Health index influenced by the lower prices recorded for medicine (amoxicillin tablets).

Underlying Indices ^{1/}

The All Items Underlying Index for April 2021 recorded no change when compared to March 2021, and a decrease of 0.5 percent when compared to April 2020. The Imported Items Underlying Index registered a decrease of 0.1 percent, while the Local Items Underlying Index recorded an increase of 0.1 percent from the previous month.

Inflation Rate

The average annual inflation rate for the year ended April 2021 was negative 3.9 percent. For the twelve months ending April 2020 the inflation rate was 2.0 percent. Presented in Graph 4 is the average annual inflation rate (April 2020 - April 2021).



Source : Samoa Bureau of Statistics

The attached Tables and Graphs provide the user with more detailed analysis.

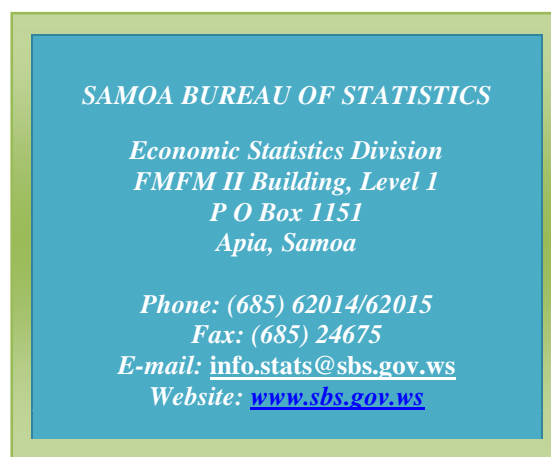
Technical Notes:

The Consumer Price (CPI) measures the rate of inflation for Samoa. It is designed to measure the change in prices for the goods purchased by households in Samoa. The CPI measures the change in prices by comparing the prices for a basket of goods and services at the collection period with the price for the same goods in a base period.

The basket of goods that is priced is based on the average expenditures of households as recorded in the Household Income and Expenditure Survey (HIES). The HIES survey identifies how much households spend on different items. The more households spend on an item on average, the more important it is to the price index, and the higher the weight in the index.

^{1/} Monthly movements in the 'headline' CPI series can be volatile. This volatility reflects price changes in particular items that may be due, among other factors, to fluctuations in commodity markets and agricultural conditions, policy changes, or seasonal or infrequent price resetting.

Underlying inflation is a measure of inflation that excludes certain items that face volatile price movements. Underlying inflation eliminates products that can have temporary price shocks because these shocks can diverge from the overall trend of inflation and give a false measure of inflation.



Date of release: 13th May 2021.

The next Consumer Price Index will be released on 10th June 2021.

Aliimuamua Malaefono Tauā - T.Faasalaina
GOVERNMENT STATISTICIAN/(CEO)

Table 1. CONSUMER PRICE INDEX.

(Base Period : Average Prices February 2016 = 100)

Group	All Items	Food and Non Alcoholic Beverages	Alcoholic Beverages, Tobacco and Narcotics	Clothing and Footwear	Housing, Water, Electricity, Gas and other Fuels	Furnishings, Household Equipment, and Maintenance	Health	Transport	Communication	Recreation and Culture	Education	Restaurants	Miscellaneous goods and services
<i>Weights</i>	1000.0	403.7	128.4	21.2	119.6	30.8	4.6	148.5	51.5	6.1	19.7	22.4	43.5
Ave - 2018	107.2	111.0	112.3	95.3	91.0	98.0	97.0	115.0	103.3	92.6	110.4	99.0	97.8
Ave - 2019	108.3	112.1	116.8	93.8	95.0	96.4	100.0	111.3	104.2	88.7	113.5	103.3	97.8
Ave - 2020	106.6	110.4	120.0	93.5	89.6	98.1	99.2	104.4	104.2	88.5	114.9	109.4	98.8
2020													
April	107.9	113.2	118.9	93.5	86.3	98.1	100.1	109.8	104.2	88.0	114.9	108.3	98.8
May	105.8	110.5	118.9	93.5	86.0	98.8	100.1	102.3	104.2	88.0	114.9	108.3	99.7
June	104.9	110.6	119.1	93.5	85.4	98.5	97.6	96.8	104.2	88.0	114.9	108.3	99.9
July	106.3	113.1	120.8	93.4	85.4	97.7	97.6	97.8	104.2	88.0	114.9	108.3	99.8
August	107.0	113.7	121.0	93.7	85.2	98.3	97.6	100.8	104.2	88.6	114.9	108.9	99.3
September	105.6	108.9	120.9	93.7	88.7	98.0	97.6	101.6	104.2	88.6	114.9	111.4	98.9
October	103.6	103.7	120.9	93.7	88.4	98.0	97.6	102.6	104.2	88.1	114.9	111.4	98.5
November	103.2	102.8	120.9	93.7	88.3	98.5	99.4	102.2	104.2	88.1	114.9	111.4	98.5
December	103.4	103.3	120.4	93.3	88.5	98.8	102.4	102.2	104.2	88.1	114.9	111.4	99.1
2021													
January	103.7	105.0	121.8	93.4	83.6	99.6	103.6	102.1	104.2	87.3	114.9	111.0	99.0
February	105.6	108.5	121.5	92.7	87.3	98.1	104.8	104.7	104.2	87.6	109.4	111.0	97.7
March	107.1	111.1	121.5	92.7	87.6	99.6	105.0	107.1	104.2	87.0	109.4	111.0	97.3
April (P)	107.1	109.8	121.5	92.7	88.8	99.3	104.3	109.6	104.2	87.0	109.4	111.0	97.4
<u>Percentage Change (P)</u>													
Apr 2021													
over	0.0%	-1.2%	0.0%	0.0%	1.3%	-0.2%	-0.7%	2.3%	0.0%	0.0%	0.0%	0.0%	0.2%
Mar 2021													
Apr 2021													
over	-0.8%	-3.0%	2.1%	-0.8%	2.9%	1.3%	4.2%	-0.2%	0.0%	-1.0%	-4.7%	2.5%	-1.4%
Apr 2020													

Source : Samoa Bureau Statistics

(P) : Provisional figures

Note : n.a. Not applicable

Table 2. ALL ITEMS UNDERLYING INDEX

(Base Period : Average Prices February 2016 = 100)

Group	All Items	Food and Non Alcoholic Beverages	Alcoholic Beverages, Tobacco and Narcotics	Clothing and Footwear	Housing, Water, Electricity, Gas and other Fuels	Furnishings, Household Equipment, and Maintenance	Health	Transport	Communication	Recreation and Culture	Education	Restaurants	Miscellaneous goods and services
<i>Weights</i>	586.7	345.3	<i>n.a</i>	21.2	24.2	30.8	3.5	26.4	51.5	5.6	12.3	22.4	43.5
Ave - 2018	106.6	110.8		95.3	93.4	98.0	96.0	110.8	103.3	92.0	114.0	99.0	97.8
Ave - 2019	107.2	111.6		93.8	94.6	96.4	100.1	108.1	104.2	87.9	118.5	103.3	97.8
Ave - 2020	106.6	109.9		93.5	93.7	98.1	98.9	110.1	104.2	87.6	120.6	109.4	98.8
2020													
April	108.3	112.8		93.5	93.6	98.1	100.1	110.3	104.2	87.0	120.6	108.3	98.8
May	106.7	109.9		93.5	95.0	98.8	100.1	110.2	104.2	87.0	120.6	108.3	99.7
June	106.7	109.8		93.5	95.2	98.5	96.8	110.4	104.2	87.0	120.6	108.3	99.9
July	108.1	112.2		93.4	95.5	97.7	96.8	110.4	104.2	87.0	120.6	108.3	99.8
August	108.3	112.8		93.7	93.0	98.3	96.8	110.0	104.2	87.8	120.6	108.9	99.3
September	106.0	108.6		93.7	93.3	98.0	96.8	111.9	104.2	87.8	120.6	111.4	98.9
October	102.6	103.1		93.7	91.8	98.0	96.8	111.3	104.2	87.2	120.6	111.4	98.5
November	103.0	103.4		93.7	91.9	98.5	99.2	113.2	104.2	87.2	120.6	111.4	98.5
December	103.3	103.8		93.3	92.2	98.8	103.1	113.3	104.2	87.2	120.6	111.4	99.1
2021													
January	104.7	106.3		93.4	91.5	99.6	104.7	113.3	104.2	86.3	120.6	111.0	99.0
February	106.1	109.3		92.7	91.2	98.1	106.3	112.7	104.2	86.6	111.9	111.0	97.7
March	107.8	111.9		92.7	92.4	99.6	106.7	114.0	104.2	86.0	111.9	111.0	97.3
April (P)	107.8	111.9		92.7	92.1	99.3	105.7	114.0	104.2	86.0	111.9	111.0	97.4
<u>Percentage Change (P)</u>													
Apr 2021 over	0.0%	0.0%		0.0%	-0.3%	-0.2%	-0.9%	0.0%	0.0%	0.0%	0.0%	0.0%	0.2%
Mar 2021													
Apr 2021 over	-0.5%	-0.8%		-0.8%	-1.6%	1.3%	5.6%	3.3%	0.0%	-1.1%	-7.2%	2.5%	-1.4%
Apr 2020													

Source : Samoa Bureau Statistics

(P) : Provisional figures

Note : n.a. Not applicable

Table 3. AVERAGE RETAIL PRICES OF SELECTED COMMODITIES

Commodities	Wt	Unit	2020			2021		
			Feb	Mar	Apr	Feb	Mar	Apr (P)
01 Food and non-alcoholic beverages								
Leg Quarters Chicken	62.2	kg	4.81	5.12	4.62	3.88	4.15	4.22
Raw Sugar	21.3	kg	2.55	2.50	2.51	2.53	2.57	2.57
Bread	17.2	loaf	1.67	1.67	1.67	1.64	1.64	1.64
Corned Beef (a)	15.9	340 grms	8.03	8.12	8.12	8.40	8.40	8.45
Taro	15.2	kg	2.41	2.38	2.30	1.64	1.71	1.63
Re-packed medium grain rice	13.4	kg	2.87	2.93	2.83	2.64	2.72	2.64
Prepacked medium grain rice (a)	13.4	907 grms	2.82	2.77	2.77	2.77	2.88	2.88
Canned fish betw een \$3.00 and \$3.99 Natural Oil	12.7	425 grms	3.40	3.43	3.37	3.30	3.34	3.31
Bongo	10.2	20 grms	0.80	0.80	0.80	0.83	0.83	0.83
Keke Saina Biscuits (a)	9.2	pkt 10	6.38	6.25	6.25	6.08	6.08	6.08
Ice Cream (a)	9.2	2 ltr	15.33	15.33	15.33	15.50	15.60	15.60
Ramen	9.0	85 gms	1.08	1.08	1.07	0.99	1.04	1.04
Fish (Piece)	7.9	kg	21.27	22.70	20.94	20.83	24.02	16.20
Butter	7.7	454 grms	15.77	15.77	16.07	15.76	15.80	16.07
Round Pancake (a)	7.5	sml	0.15	0.15	0.15	0.15	0.15	0.15
Mutton Flaps	6.6	kg	23.24	23.77	23.69	25.14	25.79	24.37
Canned fish \$4:00 or over N/Oil	6.4	425 grms	4.81	4.85	5.05	4.89	4.63	4.52
Canned fish under \$3.00 in N/Oil	6.4	425 grms	2.62	2.70	2.68	2.75	2.77	2.63
Wings Turkey	6.3	kg	7.45	7.18	7.44	8.19	8.69	8.78
Fish (string)	6.0	kg	11.25	10.81	11.13	10.24	9.67	10.81
Fish (large)	6.0	kg	17.54	15.66	16.81	16.25	16.36	15.38
02 Alcoholic beverages, tobacco and narcotics								
Lager Beer	37.9	355 mls	3.63	3.64	3.59	3.66	3.66	3.66
Pall Mall Filter Cigarettes (Red)	24.3	20 rolls	14.20	14.20	14.20	14.60	14.60	14.60
Pall Mall Menthol Cigarettes (Green)	24.3	20 rolls	14.20	14.20	14.20	14.60	14.60	14.60
Beer (a)	16.3	330 mls	3.36	3.38	3.38	3.50	3.49	3.50
Tobacco (a)	12.6	30 grms	15.00	15.00	15.00	15.00	15.00	15.00
03 Clothing and footwear								
Uniform le Faitaga College boys	4.3	size 8-10	29.67	29.67	29.67	29.67	29.67	29.67
Uniform Pa'ave (a)	3.7	size 7	32.00	31.00	31.00	29.67	29.67	29.67
04 Housing, water, electricity, gas and other fuels								
Electricity Cashpow er	50.6	kw h	0.65	0.64	0.51	0.48	0.48	0.50
Reservoir treated Water	28.5	15-40 m3	1.67	1.67	1.47	1.67	1.67	1.67
Liquid gas	15.8	9kg	62.00	62.00	62.00	59.00	59.25	59.00
Government house Rent	12.2	2 b/room	650.00	650.00	650.00	650.00	650.00	650.00

05 Furnishings, household equipment and routine household maintenance

Washing powder (a)	6.3	200 grms	1.93	1.90	1.90	1.79	1.88	1.93
Soap yellow Washing soap	5.9	bar	2.75	2.75	2.81	2.87	2.89	2.77
Mosquito coil	4.4	10 coil	1.23	1.28	1.28	1.33	1.33	1.33

06 Health

Amoxicillin 500mg tablets (a)	2.5	20 tablets	7.58	7.58	7.58	8.00	8.00	7.83
Hospital Charge	1.1	per night	22.50	22.50	22.50	22.50	22.50	22.50

07 Transport

Petrol	60.8	1 ltr	2.72	2.67	2.55	2.30	2.41	2.53
Taxi Fare P.O to Motootua Hosp	8.2	per trip	4.80	4.80	4.80	4.80	4.80	4.80
Taxi Fares P.O to Malua	8.2	per trip	31.30	31.30	31.30	31.30	31.30	31.30
Taxi Fares P.O to Falefa	8.2	per trip	43.20	43.20	43.20	43.20	43.20	43.20
Air Fares Fagalii Pago Fagalii	6.8	return trip	395.00	395.00	395.00	395.00	395.00	395.00
Air Fares Apia Auckland Apia	6.8	1 month	1313.02	1257.87	1257.87	1257.87	1257.87	1257.87

08 Communication

Calling per minute Rate cell phone (a)	10.02	per minute	0.43	0.43	0.43	0.43	0.43	0.43
Internet data bundles per mb Rate (a)	10.02	per mb	0.25	0.25	0.25	0.25	0.25	0.25
Calling per minute Rate cell phone (a)	10.02	per minute	0.44	0.44	0.44	0.44	0.44	0.44
Internet data bundles per mb Rate (a)	10.02	per mb	0.20	0.20	0.20	0.20	0.20	0.20

09 Recreation and culture

Television LCD 32" (a)	2.30	LCD 32"	861.00	861.00	852.83	861.00	852.83	852.83
Exercise Book w arw ick	1.44	1B4	1.47	1.47	1.40	1.37	1.37	1.37
Laptop (a)	1.33	each	2918.60	2918.60	2918.60	2938.60	2898.60	2898.60

10 Education

Fees PTA Primary Y Urban Registration fees (a)	7.23	Year 6	82.50	82.50	82.50	72.50	72.50	72.50
Fees PTA Secondary Y Urban Registration fees (a)	5.11	Year 10	58.00	58.00	58.00	58.00	58.00	58.00
Fees Tertiary NUS registration School Fees	3.79	registration	322.00	322.00	322.00	322.00	322.00	322.00
Fees Secondary Y Examination Fees (a)	3.61	Y12-13	25.50	25.50	25.50	25.50	25.50	25.50

11 Restaurants and hotels

Fish & Chip Meal	7.79	1 serve	9.17	9.17	9.17	10.08	10.08	10.08
Curry & Chopsuey Meal	4.87	1 serve	4.67	4.67	4.67	4.00	4.00	4.00
Chicken & Chips Meal (a)	4.87	1 serve	9.64	9.64	9.64	10.29	10.29	10.29
Steam rice & chicken Meal (a)	4.87	1 serve	4.83	4.83	4.83	5.00	5.00	5.00

12 Miscellaneous goods and services

Paper Sofan deluxe ply Toilet Paper	8.52	250 sheets	1.01	1.04	1.06	1.00	0.99	1.00
Hair Gel	4.59	1124 ml	4.51	4.46	4.57	4.76	4.76	4.76
Price for Storage of remains (a)	4.41	per day	60.00	60.00	60.00	60.00	60.00	60.00
Basic Casket (a)	4.41	each	1966.67	1966.67	1966.67	1966.67	1966.67	1966.67
Standard Embalming (a)	4.41	1 person	1500.00	1500.00	1500.00	1500.00	1500.00	1500.00
Toilet soap (a)	4.38	90g	1.96	1.96	1.95	1.93	1.92	1.93
Diapers (a)	4.19	5kg-10kg	8.49	8.33	8.33	8.09	7.89	7.60

Source : Samoa Bureau Statistics

(a) : New commodity from February 2016

(P) : Provisional figures

Note : Please note unit of conversion was in pound's (lb's) but been converted into kilograms (kg)

Table 4. IMPORTED GOODS COMPONENT OF THE CONSUMER PRICE INDEX
(Base Period : Average Prices February 2016 = 100)

Group	All Items	Food and Non Alcoholic Beverages	Alcoholic Beverages, Tobacco and Narcotics	Clothing and Footwear	Housing, Water , Electricity, Gas and other Fuels	Furnishings, Household Equipment and Maintenance	Health	Transport	Communication	Recreation and Culture	Education	Restaurants	Miscellaneous goods and services
<i>Weights</i>	494.7	269.1	23.8	15.2	28.3	26.9	2.5	88.6	<i>n.a</i>	5.6	<i>n.a</i>	<i>n.a</i>	34.7
<i>Ave - 2018</i>	111.9	113.8	113.5	96.1	100.6	97.6	94.3	124.0		92.0			96.6
<i>Ave - 2019</i>	111.1	114.5	118.3	93.7	100.8	95.8	97.9	117.3		87.9			96.7
<i>Ave - 2020</i>	107.9	112.2	117.1	93.2	96.0	97.7	95.8	107.4		87.6			98.0
2020													
April	111.6	116.0	117.4	93.1	98.0	97.8	97.5	115.8		87.0			97.9
May	107.7	112.6	117.4	93.1	96.7	98.6	97.5	104.0		87.0			99.0
June	105.7	112.4	117.4	93.1	94.3	98.3	92.7	94.7		87.0			99.3
July	107.6	115.2	117.4	93.0	94.4	97.3	92.7	96.4		87.0			99.2
August	108.8	115.9	117.4	93.4	93.6	98.0	92.7	101.4		87.8			98.5
September	105.9	110.4	116.1	93.4	94.1	97.7	92.7	102.7		87.8			98.0
October	102.2	103.2	116.1	93.4	92.8	97.6	92.7	104.4		87.2			97.5
November	102.4	103.7	117.1	93.4	92.3	98.2	96.3	103.8		87.2			97.5
December	102.7	104.1	115.8	92.9	93.0	98.5	101.8	103.8		87.2			98.3
2021													
January	104.6	107.3	117.9	93.1	93.0	99.5	104.1	103.7		86.3			98.2
February	107.3	111.1	117.9	92.3	93.9	97.8	106.4	107.9		86.6			96.5
March	109.9	114.5	117.9	92.3	95.5	99.5	106.9	112.0		86.0			96.0
April (P)	110.7	114.4	117.9	92.4	96.3	99.2	105.4	116.1		86.0			96.2
<u>Percentage Change (P)</u>													
Apr 2021 over	0.7%	0.0%	0.0%	0.1%	0.8%	-0.2%	-1.3%	3.7%		0.0%			0.2%
Mar 2021													
Apr 2021 over	-0.8%	-1.4%	0.5%	-0.8%	-1.7%	1.4%	8.1%	0.3%		-1.1%			-1.8%
Apr 2020													

Source : Samoa Bureau Statistics

(P) : Provisional figures

Note : n.a. Not applicable

Table 5. IMPORTED ITEMS UNDERLYING INDEX

(Base Period : Average Prices February 2016 = 100)

Group	All Items	Food and Non Alcoholic Beverages	Alcoholic Beverages, Tobacco and Narcotics	Clothing and Footwear	Housing, Water , Electricity, Gas and other Fuels	Furnishings, Household Equipment and Maintenance	Health	Transport	Communication	Recreation and Culture	Education	Restaurants	Miscellaneous goods and services
Weights	401.2	269.1	n.a	15.2	24.2	26.9	2.5	23.0	n.a	5.6	n.a	n.a	34.7
Ave - 2018	108.8	113.8		96.1	93.4	97.6	94.3	111.2		92.0			96.6
Ave - 2019	108.9	114.5		93.7	94.6	95.8	97.9	108.1		87.9			96.7
Ave - 2020	107.6	112.2		93.2	93.7	97.7	95.8	110.4		87.6			98.0
2020													
April	110.2	116.0		93.1	93.6	97.8	97.5	110.6		87.0			97.9
May	108.1	112.6		93.1	95.0	98.6	97.5	110.4		87.0			99.0
June	108.0	112.4		93.1	95.2	98.3	92.7	110.7		87.0			99.3
July	109.8	115.2		93.0	95.5	97.3	92.7	110.7		87.0			99.2
August	110.1	115.9		93.4	93.0	98.0	92.7	110.2		87.8			98.5
September	106.5	110.4		93.4	93.3	97.7	92.7	112.4		87.8			98.0
October	101.4	103.2		93.4	91.8	97.6	92.7	111.7		87.2			97.5
November	102.0	103.7		93.4	91.9	98.2	96.3	113.9		87.2			97.5
December	102.4	104.1		92.9	92.2	98.5	101.8	113.9		87.2			98.3
2021													
January	104.5	107.3		93.1	91.5	99.5	104.1	113.9		86.3			98.2
February	106.8	111.1		92.3	91.2	97.8	106.4	113.3		86.6			96.5
March	109.3	114.5		92.3	92.4	99.5	106.9	114.8		86.0			96.0
April (P)	109.2	114.4		92.4	92.1	99.2	105.4	114.8		86.0			96.2
Percentage Change (P)													
Apr 2021 over Mar 2021	-0.1%	0.0%		0.1%	-0.3%	-0.2%	-1.3%	0.0%		0.0%			0.2%
Apr 2021 over Apr 2020	-0.9%	-1.4%		-0.8%	-1.6%	1.4%	8.1%	3.8%		-1.1%			-1.8%

Source : Samoa Bureau Statistics

(P) : Provisional figures

Note : n.a. Not applicable

Table 6. LOCAL GOODS COMPONENT OF THE CONSUMER PRICE INDEX
(Base Period : Average Prices February 2016 = 100)

Group	All Items	Food and Non Alcoholic Beverages	Alcoholic Beverages, Tobacco and Narcotics	Clothing and Footwear	Housing, Water, Electricity, Gas and other Fuels	Furnishings, Household Equipment and Maintenance	Health	Transport	Communication	Recreation and Culture	Education	Restaurants	Miscellaneous goods and services
Weights	505.3	134.6	104.6	6.0	91.3	3.9	2.2	59.9	51.5	0.4	19.7	22.4	8.8
Ave - 2018	102.6	105.3	112.0	93.3	88.1	100.3	100.0	101.7	103.3	100.0	110.4	99.0	102.3
Ave - 2019	105.5	107.3	116.5	93.8	93.2	100.3	102.5	102.3	104.2	100.0	113.5	103.3	102.3
Ave - 2020	105.3	106.8	120.7	94.2	87.6	100.3	103.0	100.1	104.2	100.0	114.9	109.4	102.3
2020													
April	104.3	107.5	119.3	94.4	82.6	100.3	103.0	100.8	104.2	100.0	114.9	108.3	102.3
May	103.9	106.4	119.3	94.4	82.6	100.3	103.0	99.9	104.2	100.0	114.9	108.3	102.3
June	104.1	106.9	119.5	94.4	82.6	100.3	103.0	99.9	104.2	100.0	114.9	108.3	102.3
July	105.0	108.8	121.6	94.4	82.6	100.3	103.0	99.9	104.2	100.0	114.9	108.3	102.3
August	105.2	109.2	121.8	94.4	82.6	100.3	103.0	99.9	104.2	100.0	114.9	108.9	102.3
September	105.3	105.9	122.0	94.4	87.1	100.3	103.0	99.9	104.2	100.0	114.9	111.4	102.3
October	105.0	104.8	121.9	94.4	87.1	100.3	103.0	99.9	104.2	100.0	114.9	111.4	102.3
November	103.9	100.8	121.8	94.4	87.1	100.3	103.0	99.9	104.2	100.0	114.9	111.4	102.3
December	104.0	101.6	121.5	94.4	87.1	100.3	103.0	99.9	104.2	100.0	114.9	111.4	102.3
2021													
January	102.8	100.4	122.7	94.4	80.7	100.3	103.0	99.9	104.2	100.0	114.9	111.0	102.3
February	104.0	103.1	122.3	93.6	85.2	100.3	103.0	99.9	104.2	100.0	109.4	111.0	102.3
March	104.3	104.3	122.3	93.6	85.2	100.3	103.0	100.0	104.2	100.0	109.4	111.0	102.3
April (P)	103.5	100.5	122.3	93.6	86.5	100.3	103.0	100.0	104.2	100.0	109.4	111.0	102.3
<u>Percentage Change (P)</u>													
Apr 2021 over Mar 2021	-0.8%	-3.6%	0.0%	0.0%	1.5%	0.0%	0.0%	0.0%	0.0%	0.0%	0.0%	0.0%	0.0%
Apr 2021 over Apr 2020	-0.7%	-6.5%	2.5%	-0.9%	4.6%	0.0%	0.0%	-0.9%	0.0%	0.0%	-4.7%	2.5%	0.0%

Source : Samoa Bureau Statistics

(P) : Provisional figures

Note : n.a. Not applicable

Table 7. LOCAL ITEMS UNDERLYING INDEX

(Base Period : Average Prices February 2016 = 100)

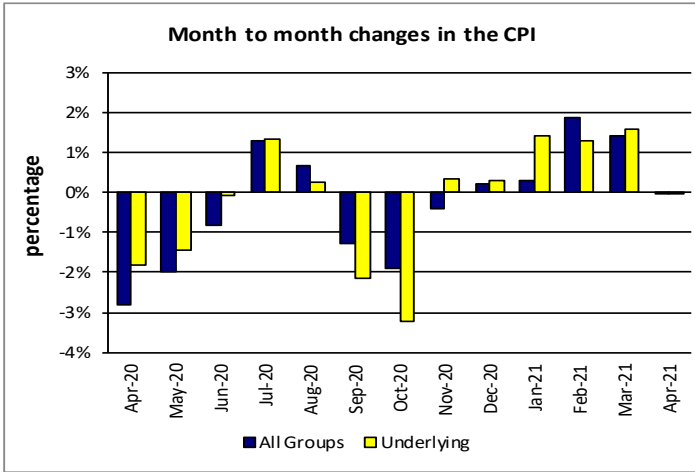
Group	All Items	Food and Non Alcoholic Beverages	Alcoholic Beverages, Tobacco and Narcotics	Clothing and Footwear	Housing, Water, Electricity, Gas and other Fuels	Furnishings, Household Equipment and Maintenance	Health	Transport	Communication	Recreation and Culture	Education	Restaurants	Miscellaneous goods and services
Weights	185.5	76.1	n.a	6.0	n.a	3.9	1.0	3.4	51.5	n.a	12.3	22.4	8.8
Ave - 2018	101.9	100.3		93.3		100.3	100.0	108.3	103.3		114.0	99.0	102.3
Ave - 2019	103.6	101.6		93.8		100.3	105.2	108.6	104.2		118.5	103.3	102.3
Ave - 2020	104.6	101.9		94.2		100.3	106.3	108.6	104.2		120.6	109.4	102.3
2020													
April	104.2	101.3		94.4		100.3	106.3	108.6	104.2		120.6	108.3	102.3
May	103.8	100.4		94.4		100.3	106.3	108.6	104.2		120.6	108.3	102.3
June	103.9	100.5		94.4		100.3	106.3	108.6	104.2		120.6	108.3	102.3
July	104.3	101.7		94.4		100.3	106.3	108.6	104.2		120.6	108.3	102.3
August	104.6	102.1		94.4		100.3	106.3	108.6	104.2		120.6	108.9	102.3
September	105.0	102.4		94.4		100.3	106.3	108.6	104.2		120.6	111.4	102.3
October	105.2	102.7		94.4		100.3	106.3	108.6	104.2		120.6	111.4	102.3
November	105.0	102.4		94.4		100.3	106.3	108.6	104.2		120.6	111.4	102.3
December	105.2	102.8		94.4		100.3	106.3	108.6	104.2		120.6	111.4	102.3
2021													
January	105.2	102.8		94.4		100.3	106.3	108.6	104.2		120.6	111.0	102.3
February	104.5	102.8		93.6		100.3	106.3	108.6	104.2		111.9	111.0	102.3
March	104.6	103.0		93.6		100.3	106.3	108.6	104.2		111.9	111.0	102.3
April (P)	104.7	103.2		93.6		100.3	106.3	108.6	104.2		111.9	111.0	102.3
<u>Percentage Change (P)</u>													
Apr 2021 over Mar 2021	0.1%	0.2%		0.0%		0.0%	0.0%	0.0%	0.0%		0.0%	0.0%	0.0%
Apr 2021 over Apr 2020	0.5%	1.8%		-0.9%		0.0%	0.0%	0.0%	0.0%		-7.2%	2.5%	0.0%

Source : Samoa Bureau Statistics

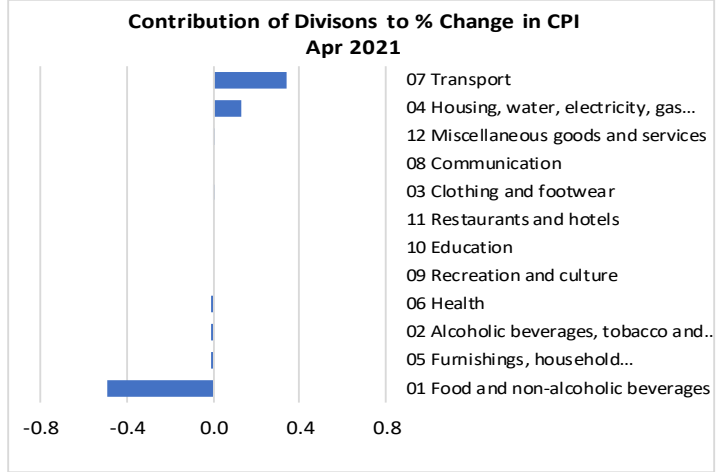
(P) : Provisional figures

Note : n.a. Not applicable

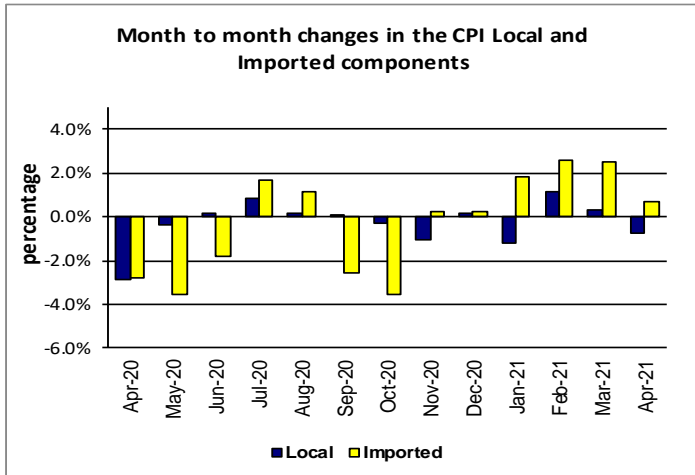
Graph.5



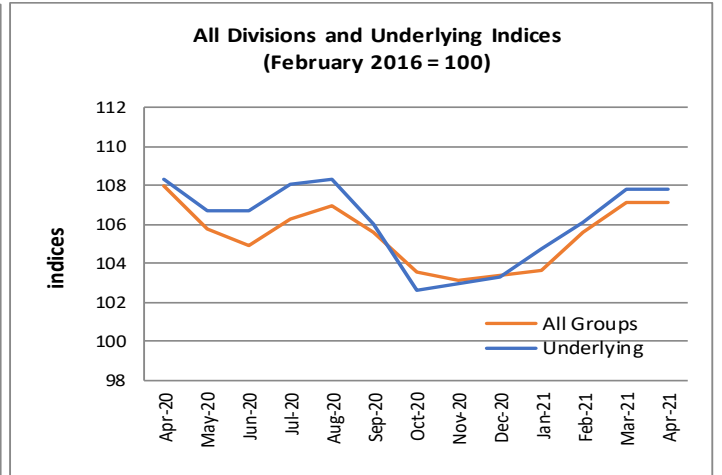
Graph.6



Graph.7



Graph.8



Graph.9

