

Please address all correspondence  
To Government Statistician  
In reply, please quote the file reference



File Ref: CPI 5/2021

GOVERNMENT OF SAMOA

## SAMOA BUREAU OF STATISTICS

# CONSUMER PRICE INDEX MAY 2021

### Key findings:

The Consumer Price Index for May 2021 increased by 0.6 percent compared to the previous month.

- The Transport index increased by 1.8 percent.
- The Recreation and Culture index also increased by 1.4 percent.
- The Average Annual Inflation for the year ended May 2021 was negative 3.6 percent.

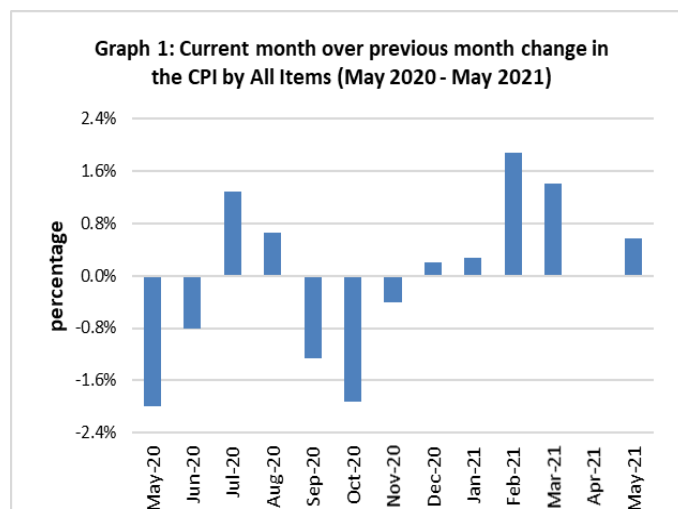
In the year to May 2021, the CPI rose 1.8 percent.

### SUMMARY

The Consumer Price Index for May 2021 was 0.6 percent higher than April 2021, and was 1.8 percent higher than May 2020.

The increase of the Imported Goods Component by 1.3 percent from the previous month was due to higher prices for imported food, fuel (petrol, diesel and kerosene), exercise book, medicine (amoxicillin tablet) and spirit (whisky), which were also the main contributors to the increase of 0.6 percent in the All Items Consumer Price Index.

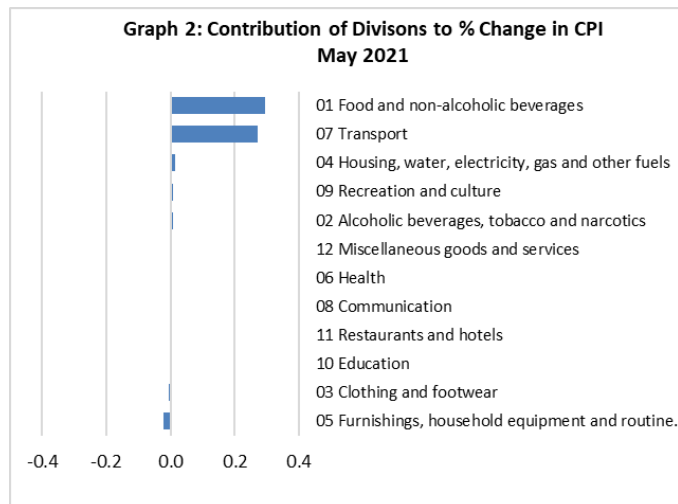
The Local Goods Component registered a decrease of 0.2 percent from the previous month. Graph 1 shows the month to month percentage changes in the Consumer Price Index by all Divisions from May 2020 to May 2021.



Source : Samoa Bureau of Statistics

## Total All Divisions Contribution

As depicted in Graph 2, Food and Non Alcoholic Beverages and Transport divisions were the main contributors to the overall increase of 0.6 percent in the All Division Consumer Price Index.



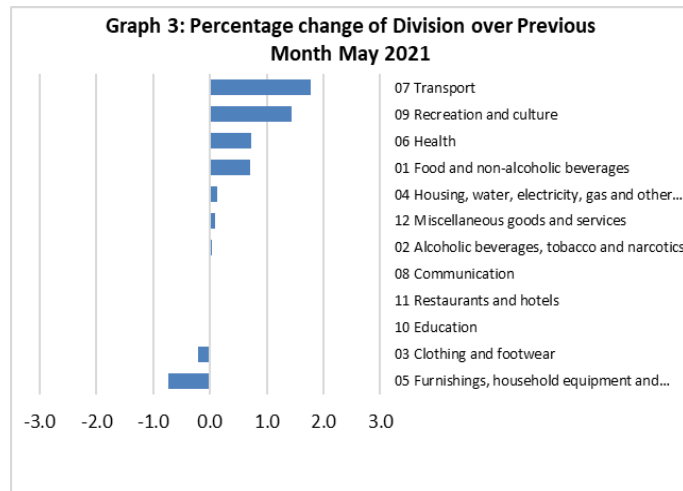
Source : Samoa Bureau of Statistics

## Consumer Price Index (% Change)

The 0.6 percent increase in the Overall Index is attributed mainly to an increase of 1.8 percent in the Transport index, 1.4 percent increase in the Recreation and Culture, 0.7 percent increase in the Food and Non Alcoholic Beverages index, 0.7 percent increase in the Health index, 0.1 percent increase in the Housing, Water, Electricity Gas and Other Fuel and 0.1 percent increase in the Miscellaneous Good and Services index.

On the contrary, decreases were recorded for other divisions namely Furnishing, Household Equipment and Maintenance index with 0.7 percent and Clothing and Footwear index with 0.2 percent.

No changes were recorded for the Alcoholic Beverages and Tobacco, Communication, Education and Restaurants indices. Graphically presented in Graph 3 is the May 2021 percentage change for all divisions from April 2021.



Source : Samoa Bureau of Statistics

## Imported Goods Component

The Imported Goods Component of the Consumer Price Index registered an increase of 1.3 percent when compared to the previous month. This increase was mainly due to higher prices recorded for imported food, fuel (petrol, diesel and kerosene), exercise book, medicine (amoxicillin tablet), spirit (whisky) and paint.

## Local Goods Component

Decreased prices recorded for beer, fresh fish (string and large), salted beef, tomato and jandal have resulted in the 0.2 percent decrease in the local Goods Component.

## Transport Index

Higher prices recorded for fuel (petrol and diesel) is reflected in the 1.8 percent increase in the Transport index.

## Recreation and Culture Index

The Recreation and Culture index recorded an increase of 1.4 percent higher, due to the rise in price recorded for exercise book.

## Food and Non Alcoholic Beverages Index

An increase of 0.7 percent in the Food and Non Alcoholic Beverages index was a reflection of the higher prices recorded for chicken leg quarter, raw sugar, canned beef, taro, fresh fish (piece), mutton flap, turkey wing, mutton neck and taamu.

## Health Index

The 0.7 percent increase in the Health index was a result of the higher prices recorded for medicine (amoxicillin tablet).

## Furnishings, Household Equipment, and Maintenance Index

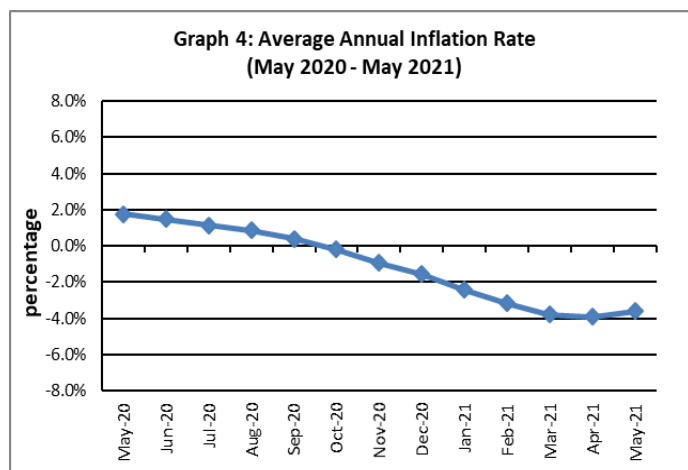
Decreased prices recorded for washing soap, batteries and clothing chest is reflected in the 0.7 percent decrease in the Furnishing, Household, Equipment and Maintenance index.

## Underlying Indices <sup>1/</sup>

The All Items Underlying Index for May 2021 registered an increase of 0.3 percent when compared to April 2021, and an increase of 1.3 percent when compared to May 2020. The Imported Items Underlying Index registered an increase of 0.9 percent, while Local Items Underlying Index recorded a decrease of 0.9 percent.

## Inflation Rate

The average annual inflation rate for the year ended May 2021 was negative 3.6 percent. For the twelve months ending May 2020 the inflation rate was 1.8 percent. Presented in Graph 4 is the Average annual inflation rate (May 2021 - May 2020).



Source : Samoa Bureau of Statistics

The attached Tables and Graphs provide the user with more detailed analysis.

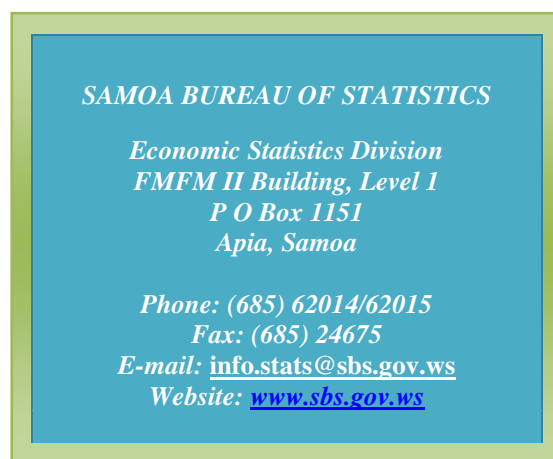
## Technical Notes:

*The Consumer Price (CPI) measures the rate of inflation for Samoa. It is designed to measure the change in prices for the goods purchased by households in Samoa. The CPI measures the change in prices by comparing the prices for a basket of goods and services at the collection period with the price for the same goods in a base period.*

*The basket of goods that is priced is based on the average expenditures of households as recorded in the Household Income and Expenditure Survey (HIES). The HIES survey identifies how much households spend on different items. The more households spend on an item on average, the more important it is to the price index, and the higher the weight in the index.*

<sup>1/</sup> *Monthly movements in the 'headline' CPI series can be volatile. This volatility reflects price changes in particular items that may be due, among other factors, to fluctuations in commodity markets and agricultural conditions, policy changes, or seasonal or infrequent price resetting.*

*Underlying inflation is a measure of inflation that excludes certain items that face volatile price movements. Underlying inflation eliminates products that can have temporary price shocks because these shocks can diverge from the overall trend of inflation and give a false measure of inflation.*



Date of release: 10<sup>th</sup> June 2021

The next Consumer Price Index will be released on 9<sup>th</sup> July 2021.

Aliimuamua Malaefono Tauā - T.Faasalaina  
**GOVERNMENT STATISTICIAN/(CEO)**

**Table 1. CONSUMER PRICE INDEX.**

**(Base Period : Average Prices February 2016 = 100)**

Group	All Items	Food and Non Alcoholic Beverages	Alcoholic Beverages, Tobacco and Narcotics	Clothing and Footwear	Housing, Water, Electricity, Gas and other Fuels	Furnishings, Household Equipment, and Maintenance	Health	Transport	Communication	Recreation and Culture	Education	Restaurants	Miscellaneous goods and services
<i>Weights</i>	<b>1000.0</b>	<b>403.7</b>	<b>128.4</b>	<b>21.2</b>	<b>119.6</b>	<b>30.8</b>	<b>4.6</b>	<b>148.5</b>	<b>51.5</b>	<b>6.1</b>	<b>19.7</b>	<b>22.4</b>	<b>43.5</b>
<i>Ave - 2018</i>	107.2	111.0	112.3	95.3	91.0	98.0	97.0	115.0	103.3	92.6	110.4	99.0	97.8
<i>Ave - 2019</i>	108.3	112.1	116.8	93.8	95.0	96.4	100.0	111.3	104.2	88.7	113.5	103.3	97.8
<i>Ave - 2020</i>	106.6	110.4	120.0	93.5	89.6	98.1	99.2	104.4	104.2	88.5	114.9	109.4	98.8
<i>2020</i>													
<i>May</i>	105.8	110.5	118.9	93.5	86.0	98.8	100.1	102.3	104.2	88.0	114.9	108.3	99.7
<i>June</i>	104.9	110.6	119.1	93.5	85.4	98.5	97.6	96.8	104.2	88.0	114.9	108.3	99.9
<i>July</i>	106.3	113.1	120.8	93.4	85.4	97.7	97.6	97.8	104.2	88.0	114.9	108.3	99.8
<i>August</i>	107.0	113.7	121.0	93.7	85.2	98.3	97.6	100.8	104.2	88.6	114.9	108.9	99.3
<i>September</i>	105.6	108.9	120.9	93.7	88.7	98.0	97.6	101.6	104.2	88.6	114.9	111.4	98.9
<i>October</i>	103.6	103.7	120.9	93.7	88.4	98.0	97.6	102.6	104.2	88.1	114.9	111.4	98.5
<i>November</i>	103.2	102.8	120.9	93.7	88.3	98.5	99.4	102.2	104.2	88.1	114.9	111.4	98.5
<i>December</i>	103.4	103.3	120.4	93.3	88.5	98.8	102.4	102.2	104.2	88.1	114.9	111.4	99.1
<i>2021</i>													
<i>January</i>	103.7	105.0	121.8	93.4	83.6	99.6	103.6	102.1	104.2	87.3	114.9	111.0	99.0
<i>February</i>	105.6	108.5	121.5	92.7	87.3	98.1	104.8	104.7	104.2	87.6	109.4	111.0	97.7
<i>March</i>	107.1	111.1	121.5	92.7	87.6	99.6	105.0	107.1	104.2	87.0	109.4	111.0	97.3
<i>April</i>	107.1	109.8	121.5	92.7	88.8	99.3	104.3	109.6	104.2	87.0	109.4	111.0	97.4
<i>May (P)</i>	107.7	110.5	121.5	92.5	88.9	98.6	105.0	111.5	104.2	88.3	109.4	111.0	97.5
<b><u>Percentage Change (P)</u></b>													
<i>May 2021</i>													
<i>over</i>	0.6%	0.7%	0.0%	-0.2%	0.1%	-0.7%	0.7%	1.8%	0.0%	1.4%	0.0%	0.0%	0.1%
<i>Apr 2021</i>													
<i>May 2021</i>													
<i>over</i>	1.8%	0.0%	2.2%	-1.0%	3.4%	-0.2%	4.9%	9.0%	0.0%	0.4%	-4.7%	2.5%	-2.2%
<i>May 2020</i>													

Source : Samoa Bureau Statistics

(P) : Provisional figures

Note : n.a. Not applicable

**Table 2. ALL ITEMS UNDERLYING INDEX**

(Base Period : Average Prices February 2016 = 100)

Group	All Items	Food and Non Alcoholic Beverages	Alcoholic Beverages, Tobacco and Narcotics	Clothing and Footwear	Housing, Water, Electricity, Gas and other Fuels	Furnishings, Household Equipment, and Maintenance	Health	Transport	Communication	Recreation and Culture	Education	Restaurants	Miscellaneous goods and services
<i>Weights</i>	<b>586.7</b>	<b>345.3</b>	<i>n.a</i>	<b>21.2</b>	<b>24.2</b>	<b>30.8</b>	<b>3.5</b>	<b>26.4</b>	<b>51.5</b>	<b>5.6</b>	<b>12.3</b>	<b>22.4</b>	<b>43.5</b>
<i>Ave - 2018</i>	106.6	110.8		95.3	93.4	98.0	96.0	110.8	103.3	92.0	114.0	99.0	97.8
<i>Ave - 2019</i>	107.2	111.6		93.8	94.6	96.4	100.1	108.1	104.2	87.9	118.5	103.3	97.8
<i>Ave - 2020</i>	106.6	109.9		93.5	93.7	98.1	98.9	110.1	104.2	87.6	120.6	109.4	98.8
2020													
May	106.7	109.9		93.5	95.0	98.8	100.1	110.2	104.2	87.0	120.6	108.3	99.7
June	106.7	109.8		93.5	95.2	98.5	96.8	110.4	104.2	87.0	120.6	108.3	99.9
July	108.1	112.2		93.4	95.5	97.7	96.8	110.4	104.2	87.0	120.6	108.3	99.8
August	108.3	112.8		93.7	93.0	98.3	96.8	110.0	104.2	87.8	120.6	108.9	99.3
September	106.0	108.6		93.7	93.3	98.0	96.8	111.9	104.2	87.8	120.6	111.4	98.9
October	102.6	103.1		93.7	91.8	98.0	96.8	111.3	104.2	87.2	120.6	111.4	98.5
November	103.0	103.4		93.7	91.9	98.5	99.2	113.2	104.2	87.2	120.6	111.4	98.5
December	103.3	103.8		93.3	92.2	98.8	103.1	113.3	104.2	87.2	120.6	111.4	99.1
2021													
January	104.7	106.3		93.4	91.5	99.6	104.7	113.3	104.2	86.3	120.6	111.0	99.0
February	106.1	109.3		92.7	91.2	98.1	106.3	112.7	104.2	86.6	111.9	111.0	97.7
March	107.8	111.9		92.7	92.4	99.6	106.7	114.0	104.2	86.0	111.9	111.0	97.3
April	107.8	111.9		92.7	92.1	99.3	105.7	114.0	104.2	86.0	111.9	111.0	97.4
May (P)	108.1	112.5		92.5	92.5	98.6	106.7	114.0	104.2	87.4	111.9	111.0	97.5
<b><u>Percentage Change (P)</u></b>													
May 2021													
over	0.3%	0.5%		-0.2%	0.4%	-0.7%	0.9%	0.0%	0.0%	1.6%	0.0%	0.0%	0.1%
Apr 2021													
May 2021													
over	1.3%	2.4%		-1.0%	-2.6%	-0.2%	6.6%	3.4%	0.0%	0.4%	-7.2%	2.5%	-2.2%
May 2020													

Source : Samoa Bureau Statistics

(P) : Provisional figures

Note : n.a. Not applicable

**Table 3. AVERAGE RETAIL PRICES OF SELECTED COMMODITIES**

Commodities	Wt	Unit	2020			2021		
			Mar	Apr	May	Mar	Apr	May (P)
<b>01 Food and non-alcoholic beverages</b>								
Leg Quarters Chicken	62.2	kg	5.12	4.62	4.19	4.15	4.22	4.39
Raw Sugar	21.3	kg	2.50	2.51	2.65	2.57	2.57	2.67
Bread	17.2	loaf	1.67	1.67	1.65	1.64	1.64	1.64
Corned Beef (a)	15.9	340 grms	8.12	8.12	8.12	8.40	8.45	8.58
Taro	15.2	kg	2.38	2.30	2.49	1.71	1.63	1.69
Re-packed medium grain rice	13.4	kg	2.93	2.83	2.71	2.72	2.64	2.75
Prepacked medium grain rice (a)	13.4	907 grms	2.77	2.77	2.78	2.88	2.88	2.77
Canned fish betw een \$3.00 and \$3.99 Natural Oil	12.7	425 grms	3.43	3.37	3.44	3.34	3.31	3.26
Bongo	10.2	20 grms	0.80	0.80	0.80	0.83	0.83	0.81
Keke Saina Biscuits (a)	9.2	pkt 10	6.25	6.25	6.25	6.08	6.08	6.17
Ice Cream (a)	9.2	2 ltr	15.33	15.33	15.33	15.60	15.60	15.33
Ramen	9.0	85 gms	1.08	1.07	1.08	1.04	1.04	1.06
Fish (Piece)	7.9	kg	22.70	20.94	23.94	24.02	16.20	20.64
Butter	7.7	454 grms	15.77	16.07	15.80	15.80	16.07	16.07
Round Pancake (a)	7.5	sml	0.15	0.15	0.15	0.15	0.15	0.15
Mutton Flaps	6.6	kg	23.77	23.69	22.94	25.79	24.37	25.14
Canned fish \$4:00 or over N/Oil	6.4	425 grms	4.85	5.05	5.02	4.63	4.52	4.73
Canned fish under \$3.00 in N/Oil	6.4	425 grms	2.70	2.68	2.65	2.77	2.63	2.52
Wings Turkey	6.3	kg	7.18	7.44	7.51	8.69	8.78	8.95
Fish (string)	6.0	kg	10.81	11.13	10.38	9.67	10.81	9.17
Fish (large)	6.0	kg	15.66	16.81	14.63	16.36	15.38	14.44
<b>02 Alcoholic beverages, tobacco and narcotics</b>								
Lager Beer	37.9	355 mls	3.64	3.59	3.59	3.66	3.66	3.64
Pall Mall Filter Cigarettes (Red)	24.3	20 rolls	14.20	14.20	14.20	14.60	14.60	14.60
Pall Mall Menthol Cigarettes (Green)	24.3	20 rolls	14.20	14.20	14.20	14.60	14.60	14.60
Beer (a)	16.3	330 mls	3.38	3.38	3.38	3.49	3.50	3.50
Tobacco (a)	12.6	30 grms	15.00	15.00	15.00	15.00	15.00	15.00
<b>03 Clothing and footwear</b>								
Uniform le Faitaga College boys	4.3	size 8-10	29.67	29.67	29.67	29.67	29.67	29.67
Uniform Pa'ave (a)	3.7	size 7	31.00	31.00	31.00	29.67	29.67	29.67
<b>04 Housing, water, electricity, gas and other fuels</b>								
Electricity Cashpow er	50.6	kw h	0.64	0.51	0.51	0.48	0.50	0.50
Reservoir treated Water	28.5	15-40 m3	1.67	1.47	1.47	1.67	1.67	1.67
Liquid gas	15.8	9kg	62.00	62.00	62.00	59.25	59.00	59.00
Government house Rent	12.2	2 b/room	650.00	650.00	650.00	650.00	650.00	650.00

---

**05 Furnishings, household equipment and routine household maintenance**

Washing powder (a)	6.3	200 grms	1.90	1.90	1.90	1.88	1.93	1.93
Soap yellow Washing soap	5.9	bar	2.75	2.81	2.81	2.89	2.77	2.68
Mosquito coil	4.4	10 coil	1.28	1.28	1.33	1.33	1.33	1.33

**06 Health**

Amoxicillin 500mg tablets (a)	2.5	20 tablets	7.58	7.58	7.58	8.00	7.83	8.00
Hospital Charge	1.1	per night	22.50	22.50	22.50	22.50	22.50	22.50

**07 Transport**

Petrol	60.8	1 ltr	2.67	2.55	2.19	2.41	2.53	2.63
Taxi Fare P.O to Motootua Hosp	8.2	per trip	4.80	4.80	4.80	4.80	4.80	4.80
Taxi Fares P.O to Malua	8.2	per trip	31.30	31.30	31.30	31.30	31.30	31.30
Taxi Fares P.O to Falefa	8.2	per trip	43.20	43.20	43.20	43.20	43.20	43.20
Air Fares Fagalii Pago Fagalii	6.8	return trip	395.00	395.00	395.00	395.00	395.00	395.00
Air Fares Apia Auckland Apia	6.8	1 month	1257.87	1257.87	1257.87	1257.87	1257.87	1257.87

**08 Communication**

Calling per minute Rate cell phone (a)	10.02	per minute	0.43	0.43	0.43	0.43	0.43	0.43
Internet data bundles per mb Rate (a)	10.02	per mb	0.25	0.25	0.25	0.25	0.25	0.25
Calling per minute Rate cell phone (a)	10.02	per minute	0.44	0.44	0.44	0.44	0.44	0.44
Internet data bundles per mb Rate (a)	10.02	per mb	0.20	0.20	0.20	0.20	0.20	0.20

**09 Recreation and culture**

Television LCD 32" (a)	2.30	LCD 32"	861.00	852.83	852.83	852.83	852.83	852.83
Exercise Book w arw ick	1.44	1B4	1.47	1.40	1.40	1.37	1.37	1.45
Laptop (a)	1.33	each	2918.60	2918.60	2918.60	2898.60	2898.60	2898.60

**10 Education**

Fees PTA Primary Y Urban Registration fees (a)	7.23	Year 6	82.50	82.50	82.50	72.50	72.50	72.50
Fees PTA Secondary Y Urban Registration fees (a)	5.11	Year 10	58.00	58.00	58.00	58.00	58.00	58.00
Fees Tertiary NUS registration School Fees	3.79	registration	322.00	322.00	322.00	322.00	322.00	322.00
Fees Secondary Y Examination Fees (a)	3.61	Y12-13	25.50	25.50	25.50	25.50	25.50	25.50

**11 Restaurants and hotels**

Fish & Chip Meal	7.79	1 serve	9.17	9.17	9.17	10.08	10.08	10.08
Curry & Chopsuey Meal	4.87	1 serve	4.67	4.67	4.67	4.00	4.00	4.00
Chicken & Chips Meal (a)	4.87	1 serve	9.64	9.64	9.64	10.29	10.29	10.29
Steam rice & chicken Meal (a)	4.87	1 serve	4.83	4.83	4.83	5.00	5.00	5.00

**12 Miscellaneous goods and services**

Paper Sofan deluxe ply Toilet Paper	8.52	250 sheets	1.04	1.06	1.08	0.99	1.00	1.00
Hair Gel	4.59	1124 ml	4.46	4.57	4.74	4.76	4.76	4.76
Price for Storage of remains (a)	4.41	per day	60.00	60.00	60.00	60.00	60.00	60.00
Basic Casket (a)	4.41	each	1966.67	1966.67	1966.67	1966.67	1966.67	1966.67
Standard Embalming (a)	4.41	1 person	1500.00	1500.00	1500.00	1500.00	1500.00	1500.00
Toilet soap (a)	4.38	90g	1.96	1.95	1.95	1.92	1.93	1.93
Diapers (a)	4.19	5kg-10kg	8.33	8.33	8.33	7.89	7.60	7.89

Source : Samoa Bureau Statistics

(a) : New commodity from February 2016

(P) : Provisional figures

Note : Please note unit of conversion was in pound's (lb's) but been converted into kilograms (kg)



**Table 4. IMPORTED GOODS COMPONENT OF THE CONSUMER PRICE INDEX**  
(Base Period : Average Prices February 2016 = 100)

Group	All Items	Food and Non Alcoholic Beverages	Alcoholic Beverages, Tobacco and Narcotics	Clothing and Footwear	Housing, Water , Electricity, Gas and other Fuels	Furnishings, Household Equipment and Maintenance	Health	Transport	Communication	Recreation and Culture	Education	Restaurants	Miscellaneous goods and services
<i>Weights</i>	<b>494.7</b>	<b>269.1</b>	<b>23.8</b>	<b>15.2</b>	<b>28.3</b>	<b>26.9</b>	<b>2.5</b>	<b>88.6</b>	<i>n.a</i>	<b>5.6</b>	<i>n.a</i>	<i>n.a</i>	<b>34.7</b>
<i>Ave - 2018</i>	111.9	113.8	113.5	96.1	100.6	97.6	94.3	124.0		92.0			96.6
<i>Ave - 2019</i>	111.1	114.5	118.3	93.7	100.8	95.8	97.9	117.3		87.9			96.7
<i>Ave - 2020</i>	107.9	112.2	117.1	93.2	96.0	97.7	95.8	107.4		87.6			98.0
2020													
May	107.7	112.6	117.4	93.1	96.7	98.6	97.5	104.0		87.0			99.0
June	105.7	112.4	117.4	93.1	94.3	98.3	92.7	94.7		87.0			99.3
July	107.6	115.2	117.4	93.0	94.4	97.3	92.7	96.4		87.0			99.2
August	108.8	115.9	117.4	93.4	93.6	98.0	92.7	101.4		87.8			98.5
September	105.9	110.4	116.1	93.4	94.1	97.7	92.7	102.7		87.8			98.0
October	102.2	103.2	116.1	93.4	92.8	97.6	92.7	104.4		87.2			97.5
November	102.4	103.7	117.1	93.4	92.3	98.2	96.3	103.8		87.2			97.5
December	102.7	104.1	115.8	92.9	93.0	98.5	101.8	103.8		87.2			98.3
2021													
January	104.6	107.3	117.9	93.1	93.0	99.5	104.1	103.7		86.3			98.2
February	107.3	111.1	117.9	92.3	93.9	97.8	106.4	107.9		86.6			96.5
March	109.9	114.5	117.9	92.3	95.5	99.5	106.9	112.0		86.0			96.0
April	110.7	114.4	117.9	92.4	96.3	99.2	105.4	116.1		86.0			96.2
May (P)	112.1	115.8	118.9	92.4	96.8	98.4	106.9	119.4		87.4			96.3
<b><u>Percentage Change (P)</u></b>													
May 2021 over Apr 2021	1.3%	1.3%	0.8%	0.0%	0.5%	-0.8%	1.3%	2.8%		1.6%			0.1%
May 2021 over May 2020	4.1%	2.9%	1.3%	-0.8%	0.1%	-0.2%	9.6%	14.8%		0.4%			-2.7%

Source : Samoa Bureau Statistics

(P) : Provisional figures

Note : n.a. Not applicable



**Table 5. IMPORTED ITEMS UNDERLYING INDEX**

**(Base Period : Average Prices February 2016 = 100)**

Group	All Items	Food and Non Alcoholic Beverages	Alcoholic Beverages, Tobacco and Narcotics	Clothing and Footwear	Housing, Water , Electricity, Gas and other Fuels	Furnishings, Household Equipment and Maintenance	Health	Transport	Communication	Recreation and Culture	Education	Restaurants	Miscellaneous goods and services
<b>Weights</b>	<b>401.2</b>	<b>269.1</b>	<b>n.a</b>	<b>15.2</b>	<b>24.2</b>	<b>26.9</b>	<b>2.5</b>	<b>23.0</b>	<b>n.a</b>	<b>5.6</b>	<b>n.a</b>	<b>n.a</b>	<b>34.7</b>
Ave - 2018	108.8	113.8		96.1	93.4	97.6	94.3	111.2		92.0			96.6
Ave - 2019	108.9	114.5		93.7	94.6	95.8	97.9	108.1		87.9			96.7
Ave - 2020	107.6	112.2		93.2	93.7	97.7	95.8	110.4		87.6			98.0
2020													
May	108.1	112.6		93.1	95.0	98.6	97.5	110.4		87.0			99.0
June	108.0	112.4		93.1	95.2	98.3	92.7	110.7		87.0			99.3
July	109.8	115.2		93.0	95.5	97.3	92.7	110.7		87.0			99.2
August	110.1	115.9		93.4	93.0	98.0	92.7	110.2		87.8			98.5
September	106.5	110.4		93.4	93.3	97.7	92.7	112.4		87.8			98.0
October	101.4	103.2		93.4	91.8	97.6	92.7	111.7		87.2			97.5
November	102.0	103.7		93.4	91.9	98.2	96.3	113.9		87.2			97.5
December	102.4	104.1		92.9	92.2	98.5	101.8	113.9		87.2			98.3
2021													
January	104.5	107.3		93.1	91.5	99.5	104.1	113.9		86.3			98.2
February	106.8	111.1		92.3	91.2	97.8	106.4	113.3		86.6			96.5
March	109.3	114.5		92.3	92.4	99.5	106.9	114.8		86.0			96.0
April	109.2	114.4		92.4	92.1	99.2	105.4	114.8		86.0			96.2
May (P)	110.2	115.8		92.4	92.5	98.4	106.9	114.8		87.4			96.3
<b><u>Percentage Change (P)</u></b>													
May 2021 over Apr 2021	0.9%	1.3%		0.0%	0.4%	-0.8%	1.3%	0.0%		1.6%			0.1%
May 2021 over May 2020	1.9%	2.9%		-0.8%	-2.6%	-0.2%	9.6%	3.9%		0.4%			-2.7%

Source : Samoa Bureau Statistics

(P) : Provisional figures

Note : n.a. Not applicable

**Table 6. LOCAL GOODS COMPONENT OF THE CONSUMER PRICE INDEX**  
(Base Period : Average Prices February 2016 = 100)

Group	All Items	Food and Non Alcoholic Beverages	Alcoholic Beverages, Tobacco and Narcotics	Clothing and Footwear	Housing, Water, Electricity, Gas and other Fuels	Furnishings, Household Equipment and Maintenance	Health	Transport	Communication	Recreation and Culture	Education	Restaurants	Miscellaneous goods and services
<b>Weights</b>	<b>505.3</b>	<b>134.6</b>	<b>104.6</b>	<b>6.0</b>	<b>91.3</b>	<b>3.9</b>	<b>2.2</b>	<b>59.9</b>	<b>51.5</b>	<b>0.4</b>	<b>19.7</b>	<b>22.4</b>	<b>8.8</b>
Ave - 2018	102.6	105.3	112.0	93.3	88.1	100.3	100.0	101.7	103.3	100.0	110.4	99.0	102.3
Ave - 2019	105.5	107.3	116.5	93.8	93.2	100.3	102.5	102.3	104.2	100.0	113.5	103.3	102.3
Ave - 2020	105.3	106.8	120.7	94.2	87.6	100.3	103.0	100.1	104.2	100.0	114.9	109.4	102.3
2020													
May	103.9	106.4	119.3	94.4	82.6	100.3	103.0	99.9	104.2	100.0	114.9	108.3	102.3
June	104.1	106.9	119.5	94.4	82.6	100.3	103.0	99.9	104.2	100.0	114.9	108.3	102.3
July	105.0	108.8	121.6	94.4	82.6	100.3	103.0	99.9	104.2	100.0	114.9	108.3	102.3
August	105.2	109.2	121.8	94.4	82.6	100.3	103.0	99.9	104.2	100.0	114.9	108.9	102.3
September	105.3	105.9	122.0	94.4	87.1	100.3	103.0	99.9	104.2	100.0	114.9	111.4	102.3
October	105.0	104.8	121.9	94.4	87.1	100.3	103.0	99.9	104.2	100.0	114.9	111.4	102.3
November	103.9	100.8	121.8	94.4	87.1	100.3	103.0	99.9	104.2	100.0	114.9	111.4	102.3
December	104.0	101.6	121.5	94.4	87.1	100.3	103.0	99.9	104.2	100.0	114.9	111.4	102.3
2021													
January	102.8	100.4	122.7	94.4	80.7	100.3	103.0	99.9	104.2	100.0	114.9	111.0	102.3
February	104.0	103.1	122.3	93.6	85.2	100.3	103.0	99.9	104.2	100.0	109.4	111.0	102.3
March	104.3	104.3	122.3	93.6	85.2	100.3	103.0	100.0	104.2	100.0	109.4	111.0	102.3
April	103.5	100.5	122.3	93.6	86.5	100.3	103.0	100.0	104.2	100.0	109.4	111.0	102.3
May (P)	103.4	99.9	122.1	92.9	86.5	100.3	103.0	100.0	104.2	100.0	109.4	111.0	102.3
<b><u>Percentage Change (P)</u></b>													
May 2021 over Apr 2021	-0.2%	-0.5%	-0.1%	-0.8%	0.0%	0.0%	0.0%	0.0%	0.0%	0.0%	0.0%	0.0%	0.0%
May 2021 over May 2020	-0.5%	-6.1%	2.4%	-1.6%	4.6%	0.0%	0.0%	0.1%	0.0%	0.0%	-4.7%	2.5%	0.0%

Source : Samoa Bureau Statistics

(P) : Provisional figures

Note : n.a. Not applicable

**Table 7. LOCAL ITEMS UNDERLYING INDEX**

(Base Period : Average Prices February 2016 = 100)

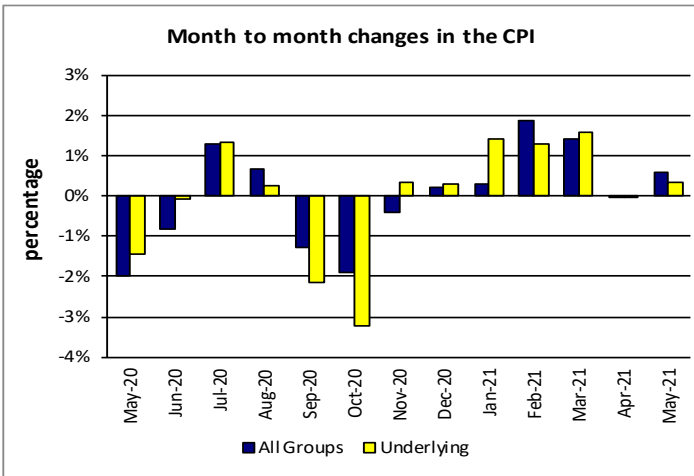
Group	All Items	Food and Non Alcoholic Beverages	Alcoholic Beverages, Tobacco and Narcotics	Clothing and Footwear	Housing, Water, Electricity, Gas and other Fuels	Furnishings, Household Equipment and Maintenance	Health	Transport	Communication	Recreation and Culture	Education	Restaurants	Miscellaneous goods and services
<b>Weights</b>	<b>185.5</b>	<b>76.1</b>	<b>n.a</b>	<b>6.0</b>	<b>n.a</b>	<b>3.9</b>	<b>1.0</b>	<b>3.4</b>	<b>51.5</b>	<b>n.a</b>	<b>12.3</b>	<b>22.4</b>	<b>8.8</b>
Ave - 2018	101.9	100.3		93.3		100.3	100.0	108.3	103.3		114.0	99.0	102.3
Ave - 2019	103.6	101.6		93.8		100.3	105.2	108.6	104.2		118.5	103.3	102.3
Ave - 2020	104.6	101.9		94.2		100.3	106.3	108.6	104.2		120.6	109.4	102.3
2020													
May	103.8	100.4		94.4		100.3	106.3	108.6	104.2		120.6	108.3	102.3
June	103.9	100.5		94.4		100.3	106.3	108.6	104.2		120.6	108.3	102.3
July	104.3	101.7		94.4		100.3	106.3	108.6	104.2		120.6	108.3	102.3
August	104.6	102.1		94.4		100.3	106.3	108.6	104.2		120.6	108.9	102.3
September	105.0	102.4		94.4		100.3	106.3	108.6	104.2		120.6	111.4	102.3
October	105.2	102.7		94.4		100.3	106.3	108.6	104.2		120.6	111.4	102.3
November	105.0	102.4		94.4		100.3	106.3	108.6	104.2		120.6	111.4	102.3
December	105.2	102.8		94.4		100.3	106.3	108.6	104.2		120.6	111.4	102.3
2021													
January	105.2	102.8		94.4		100.3	106.3	108.6	104.2		120.6	111.0	102.3
February	104.5	102.8		93.6		100.3	106.3	108.6	104.2		111.9	111.0	102.3
March	104.6	103.0		93.6		100.3	106.3	108.6	104.2		111.9	111.0	102.3
April	104.7	103.2		93.6		100.3	106.3	108.6	104.2		111.9	111.0	102.3
May (P)	103.7	100.9		92.9		100.3	106.3	108.6	104.2		111.9	111.0	102.3
<b><u>Percentage Change (P)</u></b>													
May 2021 over Apr 2021	-0.9%	-2.2%		-0.8%		0.0%	0.0%	0.0%	0.0%		0.0%	0.0%	0.0%
May 2021 over May 2020	-0.1%	0.5%		-1.6%		0.0%	0.0%	0.0%	0.0%		-7.2%	2.5%	0.0%

Source : Samoa Bureau Statistics

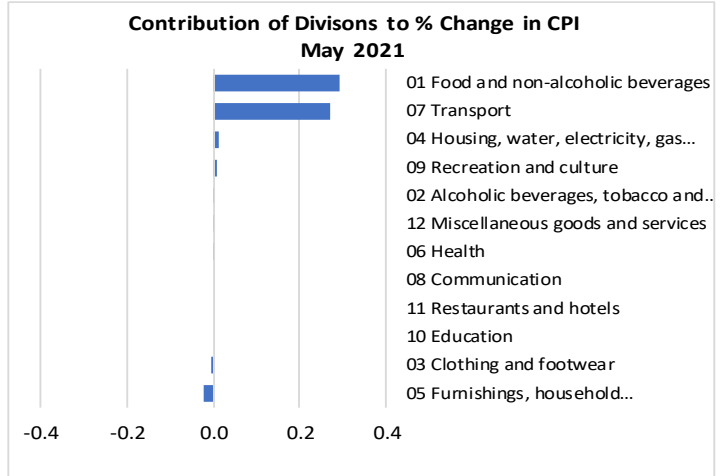
(P) : Provisional figures

Note : n.a. Not applicable

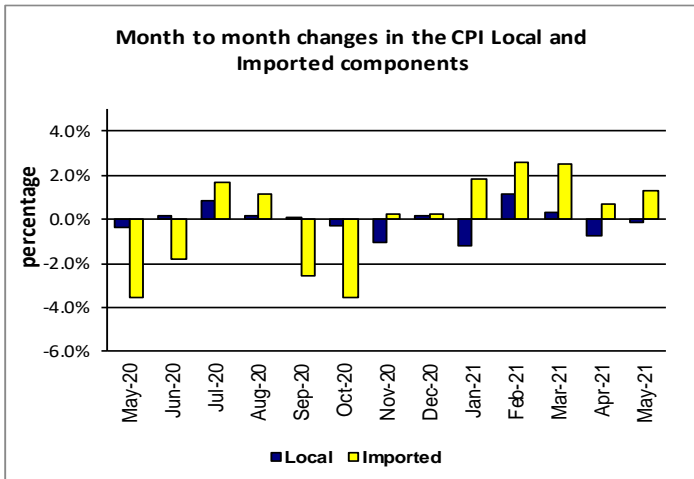
**Graph.5**



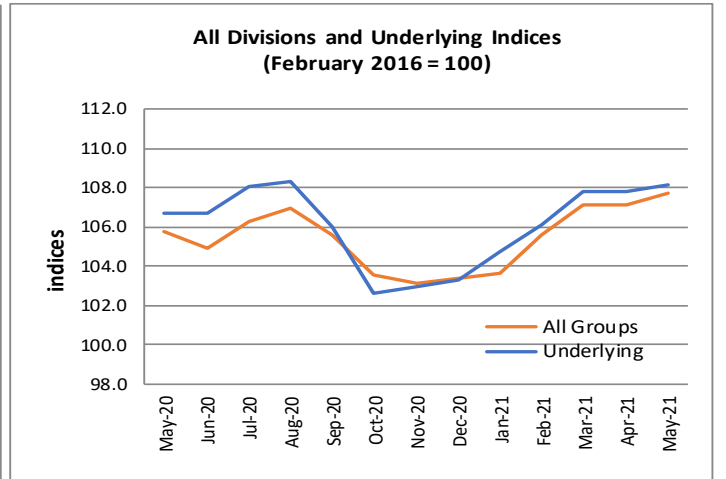
**Graph.6**



**Graph.7**



**Graph.8**



**Graph.9**

