

Please address all correspondence
To Government Statistician
In reply, please quote the file reference



GOVERNMENT OF SAMOA

File Ref: CPI 9/2021

SAMOA BUREAU OF STATISTICS

CONSUMER PRICE INDEX SEPTEMBER 2021

Key findings:

The Consumer Price Index (CPI) for September 2021 slightly went up by 0.04 percent compared to the previous month.

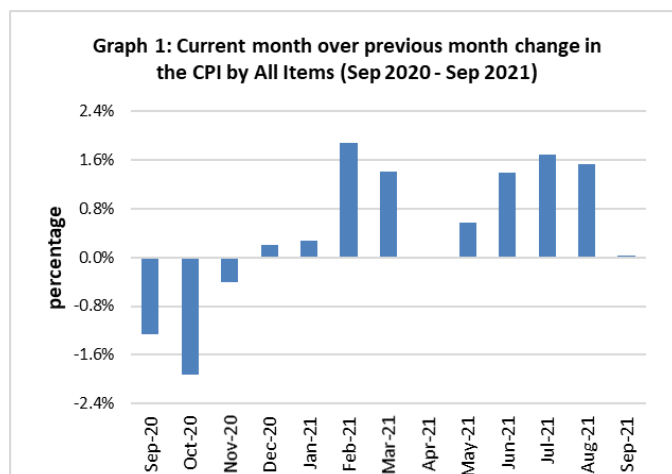
- The Transport index increased by 1.5 percent.
- The Food and Non Alcoholic Beverages index decreased by 0.5 percent.
- The Average Annual Inflation for the year ended September 2021 fell 0.8 percent.

The CPI rose 6.8 percent from September 2020.

SUMMARY

The Consumer Price Index for September 2021 slightly went up from August 2021 and was 6.8 percent higher than September 2020.

The increase of the Imported Goods Component by 0.1 percent reflects higher prices for fuel (petrol, diesel and kerosene), while Local Component recorded no change from the previous month. Graph 1 shows the month to month percentage changes in the Consumer Price Index by All Divisions from September 2020 to September 2021.

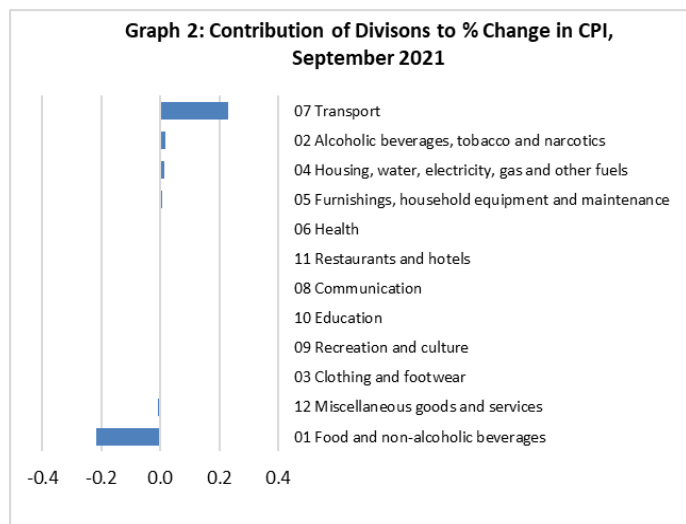


Source : Samoa Bureau of Statistics

Total All Divisions Contribution

As depicted in Graph 2, Transport division was the biggest contributor to the small increase having a positive contribution of 0.2 percent.

On the other hand, there was an offsetting negative contribution from the Food and Non Alcoholic Beverages with a contribution of negative 0.2 percent.



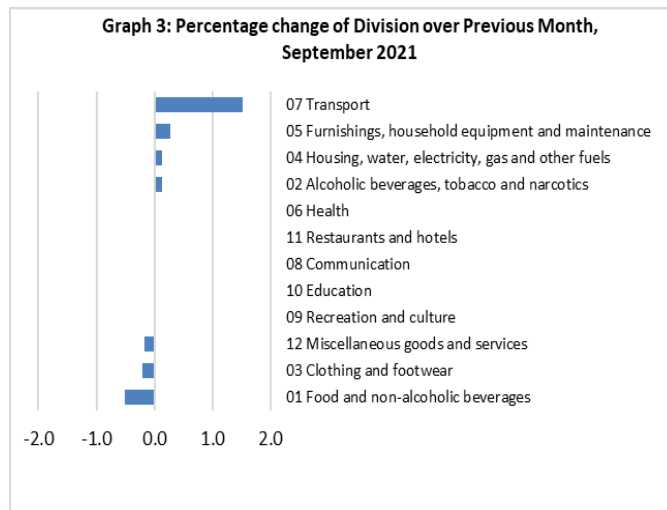
Source : Samoa Bureau of Statistics

Consumer Price Index (% Change)

The Transport index rose 1.5 percent from the previous month. Furnishing, Household Equipment and Maintenance rose 0.3 percent. Alcoholic Beverages & Tobacco and Housing, Water, Electricity, Gas & other Fuels indices both recorded increases of 0.1 percent each.

On the contrary, Food & Non Alcoholic Beverages index declined by 0.5 percent, Clothing and Footwear index was down 0.2 percent and Miscellaneous Goods & Services index also fell 0.2 percent.

No changes were recorded for Health, Communication, Recreation & Culture, Education and Restaurants indices. Graphically presented in Graph 3 shows the September 2021 percentage change for all divisions from August 2021.



Source : Samoa Bureau of Statistics

Imported Goods Component

The Imported Goods Component of the Consumer Price Index recorded an increase of 0.1 percent when compared to the previous month. This was influenced by higher prices recorded for fuel (petrol, diesel and kerosene) and paints.

Local Goods Component

The Local Good Component remained the same from the previous month.

Transport Index

Higher prices recorded for fuel (petrol and diesel) is reflected in the 1.5 percent increase in the Transport index.

Furnishings, Household Equipment, and Maintenance Index

The 0.3 percent increase in the Furnishings, Household Equipment, and Maintenance index was a result of higher prices recorded for washing soap.

Food and Non Alcoholic Beverages Index

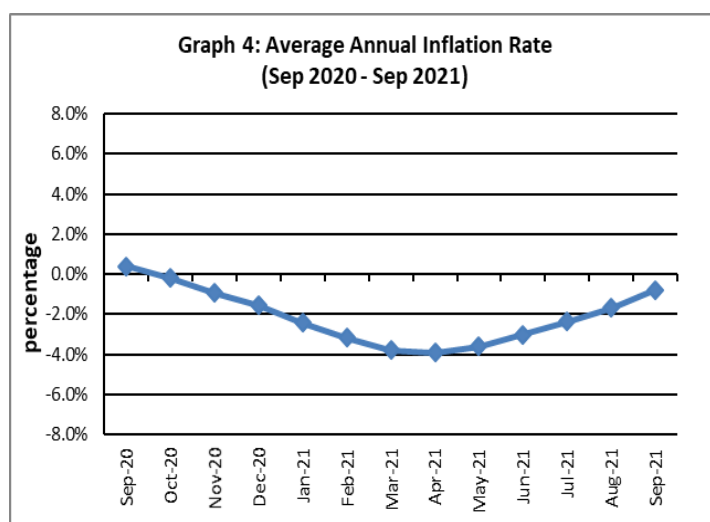
A decrease of 0.5 percent in the Food and Non Alcoholic Beverages index was a reflection of the lower prices recorded for chicken leg quarter, fresh fish (large), koko samoa and tomato.

Underlying Indices ^{1/}

The All Items Underlying Index for September 2021 recorded a decrease of 0.3 percent when compared to August 2021 but increased by 5.9 percent when compared to September 2020. The Imported Items Underlying Index registered a decrease of 0.4 percent, while the Local Items Underlying Index recorded an increase of 0.1 percent from the previous month.

Inflation Rate

The average annual CPI for the year ended September 2021 was negative 0.8 percent. For the twelve months ending September 2020, the inflation rate was 0.4 percent. Presented in Graph 4 is the average annual inflation rate (September 2020 - September 2021).



Source : Samoa Bureau of Statistics

The attached Tables and Graphs provide the user with more detailed analysis.

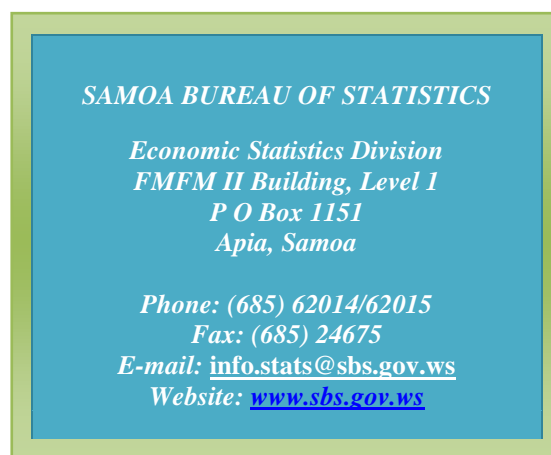
Technical Notes:

The Consumer Price (CPI) measures the rate of inflation for Samoa. It is designed to measure the change in prices for the goods purchased by households in Samoa. The CPI measures the change in prices by comparing the prices for a basket of goods and services at the collection period with the price for the same goods in a base period.

The basket of goods that is priced is based on the average expenditures of households as recorded in the Household Income and Expenditure Survey (HIES). The HIES survey identifies how much households spend on different items. The more households spend on an item on average, the more important it is to the price index, and the higher the weight in the index.

^{1/} Monthly movements in the 'headline' CPI series can be volatile. This volatility reflects price changes in particular items that may be due, among other factors, to fluctuations in commodity markets and agricultural conditions, policy changes, or seasonal or infrequent price resetting.

Underlying inflation is a measure of inflation that excludes certain items that face volatile price movements. Underlying inflation eliminates products that can have temporary price shocks because these shocks can diverge from the overall trend of inflation and give a false measure of inflation.



Date of release: 11th October 2021.

The next Consumer Price Index will be released on 9th November 2021.

Aliimuamua Malaefono Tauā - T.Faasalaina
GOVERNMENT STATISTICIAN/(CEO)

Table 1. CONSUMER PRICE INDEX.

(Base Period : Average Prices February 2016 = 100)

Group	All Items	Food and Non Alcoholic Beverages	Alcoholic Beverages, Tobacco and Narcotics	Clothing and Footwear	Housing, Water , Electricity, Gas and other Fuels	Furnishings, Household Equipment, and Maintenance	Health	Transport	Communication	Recreation and Culture	Education	Restaurants	Miscellaneous goods and services
<i>Weights</i>	1000.0	403.7	128.4	21.2	119.6	30.8	4.6	148.5	51.5	6.1	19.7	22.4	43.5
<i>Ave - 2018</i>	107.2	111.0	112.3	95.3	91.0	98.0	97.0	115.0	103.3	92.6	110.4	99.0	97.8
<i>Ave - 2019</i>	108.3	112.1	116.8	93.8	95.0	96.4	100.0	111.3	104.2	88.7	113.5	103.3	97.8
<i>Ave - 2020</i>	106.6	110.4	120.0	93.5	89.6	98.1	99.2	104.4	104.2	88.5	114.9	109.4	98.8
<i>2020</i>													
<i>September</i>	105.6	108.9	120.9	93.7	88.7	98.0	97.6	101.6	104.2	88.6	114.9	111.4	98.9
<i>October</i>	103.6	103.7	120.9	93.7	88.4	98.0	97.6	102.6	104.2	88.1	114.9	111.4	98.5
<i>November</i>	103.2	102.8	120.9	93.7	88.3	98.5	99.4	102.2	104.2	88.1	114.9	111.4	98.5
<i>December</i>	103.4	103.3	120.4	93.3	88.5	98.8	102.4	102.2	104.2	88.1	114.9	111.4	99.1
<i>2021</i>													
<i>January</i>	103.7	105.0	121.8	93.4	83.6	99.6	103.6	102.1	104.2	87.3	114.9	111.0	99.0
<i>February</i>	105.6	108.5	121.5	92.7	87.3	98.1	104.8	104.7	104.2	87.6	109.4	111.0	97.7
<i>March</i>	107.1	111.1	121.5	92.7	87.6	99.6	105.0	107.1	104.2	87.0	109.4	111.0	97.3
<i>April</i>	107.1	109.8	121.5	92.7	88.8	99.3	104.3	109.6	104.2	87.0	109.4	111.0	97.4
<i>May</i>	107.7	110.5	121.5	92.5	88.9	98.6	105.0	111.5	104.2	88.3	109.4	111.0	97.5
<i>June</i>	109.2	111.9	121.7	93.5	97.2	98.0	105.0	111.5	104.2	89.3	109.4	111.0	95.9
<i>July</i>	111.0	115.3	121.8	104.9	97.5	98.3	105.0	112.5	104.2	88.8	109.4	111.0	96.8
<i>August</i>	112.7	118.5	121.4	104.8	98.8	98.9	107.0	114.1	104.2	88.3	109.4	111.4	97.1
<i>September (P)</i>	112.8	117.9	121.6	104.5	98.9	99.2	107.0	115.9	104.2	88.3	109.4	111.4	96.9
<u>Percentage Change (P)</u>													
<i>Sep 2021</i>													
<i>over</i>	0.0%	-0.5%	0.1%	-0.2%	0.1%	0.3%	0.0%	1.5%	0.0%	0.0%	0.0%	0.0%	-0.2%
<i>Aug 2021</i>													
<i>Sep 2021</i>													
<i>over</i>	6.8%	8.3%	0.5%	11.6%	11.4%	1.2%	9.7%	14.1%	0.0%	-0.4%	-4.7%	0.0%	-2.0%
<i>Sep 2020</i>													

Source : Samoa Bureau Statistics

(P) : Provisional figures

Table 2. ALL ITEMS UNDERLYING INDEX
(Base Period : Average Prices February 2016 = 100)

Group	All Items	Food and Non Alcoholic Beverages	Alcoholic Beverages, Tobacco and Narcotics	Clothing and Footwear	Housing, Water, Electricity, Gas and other Fuels	Furnishings, Household Equipment, and Maintenance	Health	Transport	Communication	Recreation and Culture	Education	Restaurants	Miscellaneous goods and services
<i>Weights</i>	586.7	345.3	<i>n.a</i>	21.2	24.2	30.8	3.5	26.4	51.5	5.6	12.3	22.4	43.5
<i>Ave - 2018</i>	106.6	110.8		95.3	93.4	98.0	96.0	110.8	103.3	92.0	114.0	99.0	97.8
<i>Ave - 2019</i>	107.2	111.6		93.8	94.6	96.4	100.1	108.1	104.2	87.9	118.5	103.3	97.8
<i>Ave - 2020</i>	106.6	109.9		93.5	93.7	98.1	98.9	110.1	104.2	87.6	120.6	109.4	98.8
2020													
September	106.0	108.6		93.7	93.3	98.0	96.8	111.9	104.2	87.8	120.6	111.4	98.9
October	102.6	103.1		93.7	91.8	98.0	96.8	111.3	104.2	87.2	120.6	111.4	98.5
November	103.0	103.4		93.7	91.9	98.5	99.2	113.2	104.2	87.2	120.6	111.4	98.5
December	103.3	103.8		93.3	92.2	98.8	103.1	113.3	104.2	87.2	120.6	111.4	99.1
2021													
January	104.7	106.3		93.4	91.5	99.6	104.7	113.3	104.2	86.3	120.6	111.0	99.0
February	106.1	109.3		92.7	91.2	98.1	106.3	112.7	104.2	86.6	111.9	111.0	97.7
March	107.8	111.9		92.7	92.4	99.6	106.7	114.0	104.2	86.0	111.9	111.0	97.3
April	107.8	111.9		92.7	92.1	99.3	105.7	114.0	104.2	86.0	111.9	111.0	97.4
May	108.1	112.5		92.5	92.5	98.6	106.7	114.0	104.2	87.4	111.9	111.0	97.5
June	108.4	113.2		93.5	92.7	98.0	106.7	113.9	104.2	88.5	111.9	111.0	95.9
July	110.9	116.6		104.9	93.0	98.3	106.7	113.5	104.2	88.0	111.9	111.0	96.8
August	112.6	119.4		104.8	93.7	98.9	109.3	113.5	104.2	87.4	111.9	111.4	97.1
September (P)	112.3	118.8		104.5	94.0	99.2	109.3	113.5	104.2	87.4	111.9	111.4	96.9
<u>Percentage Change (P)</u>													
Sep 2021													
over	-0.3%	-0.5%		-0.2%	0.3%	0.3%	0.0%	0.0%	0.0%	0.0%	0.0%	0.0%	-0.2%
Aug 2021													
Sep 2021													
over	5.9%	9.4%		11.6%	0.8%	1.2%	13.0%	1.4%	0.0%	-0.4%	-7.2%	0.0%	-2.0%
Sep 2020													

Source : Samoa Bureau Statistics

(P) : Provisional figures

Note : n.a. Not applicable

Table 3. AVERAGE RETAIL PRICES OF SELECTED COMMODITIES

Commodities	Wt	Unit	2020			2021		
			Jul	Aug	Sep	Jul	Aug	Sep (P)
01 Food and non-alcoholic beverages								
Leg Quarters Chicken	62.2	kg	4.34	4.40	3.80	4.93	5.24	5.08
Raw Sugar	21.3	kg	2.71	2.75	2.69	2.80	2.82	2.91
Bread	17.2	loaf	1.67	1.67	1.67	1.64	1.64	1.64
Corned Beef (a)	15.9	340 grms	8.20	8.20	8.20	8.55	8.45	8.55
Taro	15.2	kg	2.97	3.05	2.87	2.00	2.59	2.58
Re-packed medium grain rice	13.4	kg	2.85	2.85	2.83	2.63	2.64	2.65
Prepacked medium grain rice (a)	13.4	907 grms	2.73	2.85	2.85	2.77	2.77	2.77
Canned fish between \$3.00 and \$3.99 Natural Oil	12.7	425 grms	3.45	3.44	3.46	3.22	3.25	3.25
Bongo	10.2	20 grms	0.82	0.85	0.85	0.80	0.83	0.83
Keke Saina Biscuits (a)	9.2	pkt 10	6.17	6.17	6.17	6.13	6.13	6.14
Ice Cream (a)	9.2	2 ltr	15.33	15.17	15.33	15.52	15.43	15.58
Ramen	9.0	85 gms	1.09	1.09	1.09	1.11	1.11	1.11
Fish (Piece)	7.9	kg	23.06	24.55	21.95	24.64	24.09	24.32
Butter	7.7	454 grms	15.66	15.69	15.44	16.06	16.14	16.14
Round Pancake (a)	7.5	sml	0.15	0.15	0.15	0.15	0.15	0.15
Mutton Flaps	6.6	kg	24.98	24.98	24.74	22.90	24.13	24.84
Canned fish \$4:00 or over N/Oil	6.4	425 grms	5.02	5.03	5.11	4.89	4.83	4.82
Canned fish under \$3.00 in N/Oil	6.4	425 grms	3.56	3.59	3.61	2.68	2.67	2.67
Wings Turkey	6.3	kg	2.80	2.82	2.82	8.63	9.36	9.66
Fish (string)	6.0	kg	7.24	7.55	7.76	11.11	10.12	10.19
Fish (large)	6.0	kg	9.68	10.57	9.94	15.67	19.69	17.51
02 Alcoholic beverages, tobacco and narcotics								
Lager Beer	37.9	355 mls	3.62	3.62	3.63	3.66	3.65	3.65
Pall Mall Filter Cigarettes (Red)	24.3	20 rolls	14.60	14.60	14.60	14.60	14.60	14.60
Pall Mall Menthol Cigarettes (Green)	24.3	20 rolls	14.60	14.60	14.60	14.60	14.60	14.60
Beer (a)	16.3	330 mls	3.45	3.46	3.48	3.53	3.51	3.55
Tobacco (a)	12.6	30 grms	15.00	15.00	15.00	15.00	15.00	15.00
03 Clothing and footwear								
Uniform le Faitaga College boys	4.3	size 8-10	29.67	29.67	29.67	37.00	37.00	37.00
Uniform Pa'ave (a)	3.7	size 7	31.00	31.00	31.00	37.33	37.33	37.33
04 Housing, water, electricity, gas and other fuels								
Electricity Cashpower	50.6	kw h	0.51	0.51	0.58	0.67	0.69	0.69
Reservoir treated Water	28.5	15-40 m3	1.47	1.47	1.47	1.67	1.67	1.67
Liquid gas	15.8	9kg	62.00	59.25	59.25	59.25	59.25	59.25
Government house Rent	12.2	2 b/room	650.00	650.00	650.00	650.00	650.00	650.00
05 Furnishings, household equipment and routine household maintenance								
Washing powder (a)	6.3	200 grms	1.87	1.87	1.88	1.87	1.87	1.87
Soap yellow Washing soap	5.9	bar	2.75	2.80	2.72	2.79	2.79	2.83
Mosquito coil	4.4	10 coil	1.30	1.30	1.30	1.30	1.30	1.30

06 Health

Amoxicillin 500mg tablets (a)	2.5	20 tablets	7.00	7.00	7.00	8.00	8.50	8.50
Hospital Charge	1.1	per night	22.50	22.50	22.50	22.50	22.50	22.50

07 Transport

Petrol	60.8	1 ltr	1.98	2.13	2.15	2.68	2.76	2.85
Taxi Fare P.O to Motootua Hosp	8.2	per trip	4.80	4.80	4.80	4.80	4.80	4.80
Taxi Fares P.O to Malua	8.2	per trip	31.30	31.30	31.30	31.30	31.30	31.30
Taxi Fares P.O to Falefa	8.2	per trip	43.20	43.20	43.20	43.20	43.20	43.20
Air Fares Fagalii Pago Fagalii	6.8	return trip	395.00	395.00	395.00	395.00	395.00	395.00
Air Fares Apia Auckland Apia	6.8	1 month	1257.87	1257.87	1257.87	1257.87	1257.87	1257.87

08 Communication

Calling per minute Rate cell phone (a)	10.02	per minute	0.43	0.43	0.43	0.43	0.43	0.43
Internet data bundles per mb Rate (a)	10.02	per mb	0.25	0.25	0.25	0.25	0.25	0.25
Calling per minute Rate cell phone (a)	10.02	per minute	0.44	0.44	0.44	0.44	0.44	0.44
Internet data bundles per mb Rate (a)	10.02	per mb	0.20	0.20	0.20	0.20	0.20	0.20

09 Recreation and culture

Television LCD 32" (a)	2.30	LCD 32"	852.83	852.83	852.83	869.50	852.83	852.83
Exercise Book w arw ick	1.44	1B4	1.40	1.40	1.40	1.45	1.45	1.45
Laptop (a)	1.33	each	2918.60	3018.60	3018.60	2898.60	2898.60	2898.60

10 Education

Fees PTA Primary Y Urban Registration fees (a)	7.23	Year 6	82.50	82.50	82.50	72.50	72.50	72.50
Fees PTA Secondary Y Urban Registration fees (a)	5.11	Year 10	58.00	58.00	58.00	58.00	58.00	58.00
Fees Tertiary NUS registration School Fees	3.79	registration	322.00	322.00	322.00	322.00	322.00	322.00
Fees Secondary Y Examination Fees (a)	3.61	Y12-13	25.50	25.50	25.50	25.50	25.50	25.50

11 Restaurants and hotels

Fish & Chip Meal	7.79	1 serve	9.17	9.17	9.58	10.08	10.08	10.08
Curry & Chopsuey Meal	4.87	1 serve	4.67	4.67	4.67	4.00	4.00	4.00
Chicken & Chips Meal (a)	4.87	1 serve	9.64	9.93	10.00	10.29	10.43	10.43
Steam rice & chicken Meal (a)	4.87	1 serve	4.83	4.83	5.00	5.00	5.00	5.00

12 Miscellaneous goods and services

Paper Sofan deluxe ply Toilet Paper	8.52	250 sheets	1.08	1.08	1.05	0.98	1.00	1.00
Hair Gel	4.59	1124 ml	4.74	4.47	4.47	4.61	4.61	4.61
Price for Storage of remains (a)	4.41	per day	60.00	60.00	60.00	60.00	60.00	60.00
Basic Casket (a)	4.41	each	1966.67	1966.67	1966.67	1966.67	1966.67	1966.67
Standard Embalming (a)	4.41	1 person	1500.00	1500.00	1500.00	1500.00	1500.00	1500.00
Toilet soap (a)	4.38	90g	1.97	1.95	1.97	1.91	1.91	1.91
Diapers (a)	4.19	5kg-10kg	8.46	8.46	8.33	7.74	7.60	7.37

Source : Samoa Bureau Statistics

(a) : New commodity from February 2016

(P) : Provisional figures

Note : Please note unit of conversion was in pound's (lb's) but been converted into kilograms (kg)

Table 4. IMPORTED GOODS COMPONENT OF THE CONSUMER PRICE INDEX
(Base Period : Average Prices February 2016 = 100)

Group	All Items	Food and Non Alcoholic Beverages	Alcoholic Beverages, Tobacco and Narcotics	Clothing and Footwear	Housing, Water , Electricity, Gas and other Fuels	Furnishings, Household Equipment and Maintenance	Health	Transport	Communication	Recreation and Culture	Education	Restaurants	Miscellaneous goods and services
<i>Weights</i>	494.7	269.1	23.8	15.2	28.3	26.9	2.5	88.6	<i>n.a</i>	5.6	<i>n.a</i>	<i>n.a</i>	34.7
Ave - 2018	111.9	113.8	113.5	96.1	100.6	97.6	94.3	124.0		92.0			96.6
Ave - 2019	111.1	114.5	118.3	93.7	100.8	95.8	97.9	117.3		87.9			96.7
Ave - 2020	107.9	112.2	117.1	93.2	96.0	97.7	95.8	107.4		87.6			98.0
2020													
September	105.9	110.4	116.1	93.4	94.1	97.7	92.7	102.7		87.8			98.0
October	102.2	103.2	116.1	93.4	92.8	97.6	92.7	104.4		87.2			97.5
November	102.4	103.7	117.1	93.4	92.3	98.2	96.3	103.8		87.2			97.5
December	102.7	104.1	115.8	92.9	93.0	98.5	101.8	103.8		87.2			98.3
2021													
January	104.6	107.3	117.9	93.1	93.0	99.5	104.1	103.7		86.3			98.2
February	107.3	111.1	117.9	92.3	93.9	97.8	106.4	107.9		86.6			96.5
March	109.9	114.5	117.9	92.3	95.5	99.5	106.9	112.0		86.0			96.0
April	110.7	114.4	117.9	92.4	96.3	99.2	105.4	116.1		86.0			96.2
May	112.1	115.8	118.9	92.4	96.8	98.4	106.9	119.4		87.4			96.3
June	112.4	116.5	119.2	93.8	97.0	97.7	106.9	119.3		88.5			94.3
July	115.7	120.9	119.2	109.1	98.1	98.0	106.9	120.9		88.0			95.4
August	118.3	124.4	119.2	108.9	99.4	98.7	110.6	123.7		87.4			95.8
September (P)	118.4	123.7	119.2	108.6	99.9	99.1	110.6	126.6		87.4			95.6
<u>Percentage Change (P)</u>													
Sep 2021 over	0.1%	-0.6%	0.0%	-0.3%	0.5%	0.3%	0.0%	2.4%		0.0%			-0.2%
Aug 2021													
Sep 2021 over	11.7%	12.0%	2.7%	16.3%	6.2%	1.4%	19.3%	23.3%		-0.4%			-2.5%
Sep 2020													

Source : Samoa Bureau Statistics

(P) : Provisional figures

Note : n.a. Not applicable

Table 5. IMPORTED ITEMS UNDERLYING INDEX

(Base Period : Average Prices February 2016 = 100)

Group	All Items	Food and Non Alcoholic Beverages	Alcoholic Beverages, Tobacco and Narcotics	Clothing and Footwear	Housing, Water , Electricity, Gas and other Fuels	Furnishings, Household Equipment and Maintenance	Health	Transport	Communication	Recreation and Culture	Education	Restaurants	Miscellaneous goods and services
Weights	401.2	269.1	n.a	15.2	24.2	26.9	2.5	23.0	n.a	5.6	n.a	n.a	34.7
Ave - 2018	108.8	113.8		96.1	93.4	97.6	94.3	111.2		92.0			96.6
Ave - 2019	108.9	114.5		93.7	94.6	95.8	97.9	108.1		87.9			96.7
Ave - 2020	107.6	112.2		93.2	93.7	97.7	95.8	110.4		87.6			98.0
2020													
September	106.5	110.4		93.4	93.3	97.7	92.7	112.4		87.8			98.0
October	101.4	103.2		93.4	91.8	97.6	92.7	111.7		87.2			97.5
November	102.0	103.7		93.4	91.9	98.2	96.3	113.9		87.2			97.5
December	102.4	104.1		92.9	92.2	98.5	101.8	113.9		87.2			98.3
2021													
January	104.5	107.3		93.1	91.5	99.5	104.1	113.9		86.3			98.2
February	106.8	111.1		92.3	91.2	97.8	106.4	113.3		86.6			96.5
March	109.3	114.5		92.3	92.4	99.5	106.9	114.8		86.0			96.0
April	109.2	114.4		92.4	92.1	99.2	105.4	114.8		86.0			96.2
May	110.2	115.8		92.4	92.5	98.4	106.9	114.8		87.4			96.3
June	110.5	116.5		93.8	92.7	97.7	106.9	114.7		88.5			94.3
July	114.1	120.9		109.1	93.0	98.0	106.9	114.2		88.0			95.4
August	116.6	124.4		108.9	93.7	98.7	110.6	114.2		87.4			95.8
September (P)	116.1	123.7		108.6	94.0	99.1	110.6	114.2		87.4			95.6
<u>Percentage Change (P)</u>													
Sep 2021 over Aug 2021	-0.4%	-0.6%		-0.3%	0.3%	0.3%	0.0%	0.0%		0.0%			-0.2%
Sep 2021 over Sep 2020	9.0%	12.0%		16.3%	0.8%	1.4%	19.3%	1.6%		-0.4%			-2.5%

Source : Samoa Bureau Statistics

(P) : Provisional figures

Note : n.a. Not applicable

Table 6. LOCAL GOODS COMPONENT OF THE CONSUMER PRICE INDEX
(Base Period : Average Prices February 2016 = 100)

Group	All Items	Food and Non Alcoholic Beverages	Alcoholic Beverages, Tobacco and Narcotics	Clothing and Footwear	Housing, Water, Electricity, Gas and other Fuels	Furnishings, Household Equipment and Maintenance	Health	Transport	Communication	Recreation and Culture	Education	Restaurants	Miscellaneous goods and services
Weights	505.3	134.6	104.6	6.0	91.3	3.9	2.2	59.9	51.5	0.4	19.7	22.4	8.8
Ave - 2018	102.6	105.3	112.0	93.3	88.1	100.3	100.0	101.7	103.3	100.0	110.4	99.0	102.3
Ave - 2019	105.5	107.3	116.5	93.8	93.2	100.3	102.5	102.3	104.2	100.0	113.5	103.3	102.3
Ave - 2020	105.3	106.8	120.7	94.2	87.6	100.3	103.0	100.1	104.2	100.0	114.9	109.4	102.3
2020													
September	105.3	105.9	122.0	94.4	87.1	100.3	103.0	99.9	104.2	100.0	114.9	111.4	102.3
October	105.0	104.8	121.9	94.4	87.1	100.3	103.0	99.9	104.2	100.0	114.9	111.4	102.3
November	103.9	100.8	121.8	94.4	87.1	100.3	103.0	99.9	104.2	100.0	114.9	111.4	102.3
December	104.0	101.6	121.5	94.4	87.1	100.3	103.0	99.9	104.2	100.0	114.9	111.4	102.3
2021													
January	102.8	100.4	122.7	94.4	80.7	100.3	103.0	99.9	104.2	100.0	114.9	111.0	102.3
February	104.0	103.1	122.3	93.6	85.2	100.3	103.0	99.9	104.2	100.0	109.4	111.0	102.3
March	104.3	104.3	122.3	93.6	85.2	100.3	103.0	100.0	104.2	100.0	109.4	111.0	102.3
April	103.5	100.5	122.3	93.6	86.5	100.3	103.0	100.0	104.2	100.0	109.4	111.0	102.3
May	103.4	99.9	122.1	92.9	86.5	100.3	103.0	100.0	104.2	100.0	109.4	111.0	102.3
June	106.1	102.7	122.2	92.9	97.3	100.3	103.0	100.0	104.2	100.0	109.4	111.0	102.3
July	106.5	104.1	122.3	94.2	97.3	100.3	103.0	100.0	104.2	100.0	109.4	111.0	102.3
August	107.3	106.7	121.9	94.2	98.6	100.3	103.0	100.0	104.2	100.0	109.4	111.4	102.3
September (P)	107.3	106.4	122.1	94.2	98.6	100.3	103.0	100.0	104.2	100.0	109.4	111.4	102.3
<u>Percentage Change (P)</u>													
Sep 2021 over Aug 2021	0.0%	-0.2%	0.2%	0.0%	0.0%	0.0%	0.0%	0.0%	0.0%	0.0%	0.0%	0.0%	0.0%
Sep 2021 over Sep 2020	1.9%	0.5%	0.1%	-0.2%	13.2%	0.0%	0.0%	0.1%	0.0%	0.0%	-4.7%	0.0%	0.0%

Source : Samoa Bureau Statistics

(P) : Provisional figures

Table 7. LOCAL ITEMS UNDERLYING INDEX

(Base Period : Average Prices February 2016 = 100)

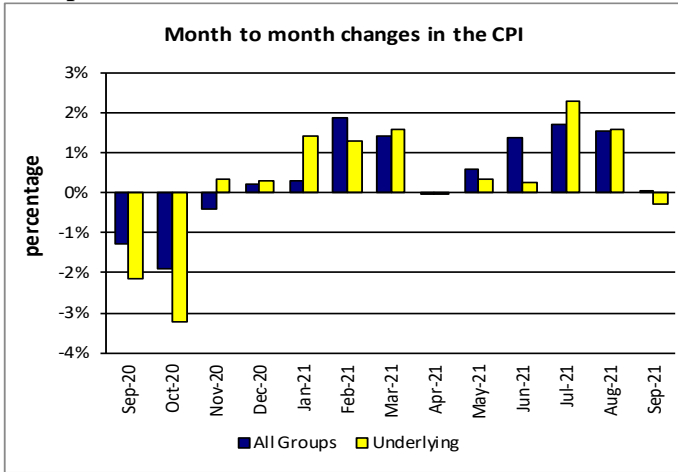
Group	All Items	Food and Non Alcoholic Beverages	Alcoholic Beverages, Tobacco and Narcotics	Clothing and Footwear	Housing, Water , Electricity, Gas and other Fuels	Furnishings, Household Equipment and Maintenance	Health	Transport	Communication	Recreation and Culture	Education	Restaurants	Miscellaneous goods and services
Weights	185.5	76.1	n.a	6.0	n.a	3.9	1.0	3.4	51.5	n.a	12.3	22.4	8.8
Ave - 2018	101.9	100.3		93.3		100.3	100.0	108.3	103.3		114.0	99.0	102.3
Ave - 2019	103.6	101.6		93.8		100.3	105.2	108.6	104.2		118.5	103.3	102.3
Ave - 2020	104.6	101.9		94.2		100.3	106.3	108.6	104.2		120.6	109.4	102.3
2020													
September	105.0	102.4		94.4		100.3	106.3	108.6	104.2		120.6	111.4	102.3
October	105.2	102.7		94.4		100.3	106.3	108.6	104.2		120.6	111.4	102.3
November	105.0	102.4		94.4		100.3	106.3	108.6	104.2		120.6	111.4	102.3
December	105.2	102.8		94.4		100.3	106.3	108.6	104.2		120.6	111.4	102.3
2021													
January	105.2	102.8		94.4		100.3	106.3	108.6	104.2		120.6	111.0	102.3
February	104.5	102.8		93.6		100.3	106.3	108.6	104.2		111.9	111.0	102.3
March	104.6	103.0		93.6		100.3	106.3	108.6	104.2		111.9	111.0	102.3
April	104.7	103.2		93.6		100.3	106.3	108.6	104.2		111.9	111.0	102.3
May	103.7	100.9		92.9		100.3	106.3	108.6	104.2		111.9	111.0	102.3
June	103.9	101.3		92.9		100.3	106.3	108.6	104.2		111.9	111.0	102.3
July	104.0	101.3		94.2		100.3	106.3	108.6	104.2		111.9	111.0	102.3
August	104.0	101.4		94.2		100.3	106.3	108.6	104.2		111.9	111.4	102.3
September (P)	104.1	101.6		94.2		100.3	106.3	108.6	104.2		111.9	111.4	102.3
<u>Percentage Change (P)</u>													
Sep 2021 over Aug 2021	0.1%	0.2%		0.0%		0.0%	0.0%	0.0%	0.0%		0.0%	0.0%	0.0%
Sep 2021 over Sep 2020	-0.9%	-0.8%		-0.2%		0.0%	0.0%	0.0%	0.0%		-7.2%	0.0%	0.0%

Source : Samoa Bureau Statistics

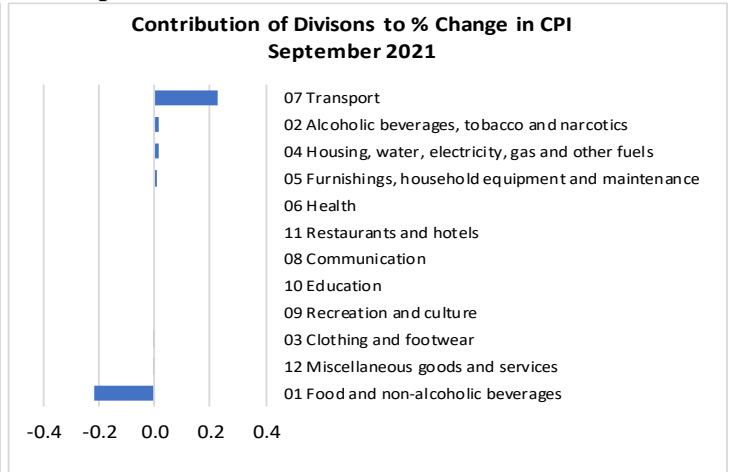
(P) : Provisional figures

Note : n.a. Not applicable

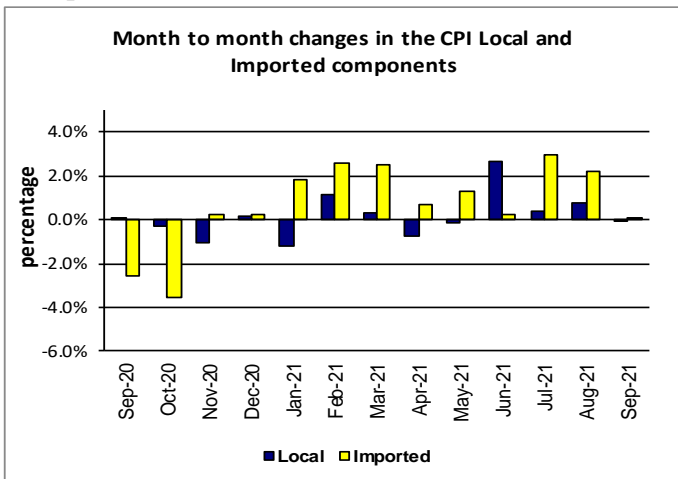
Graph.5



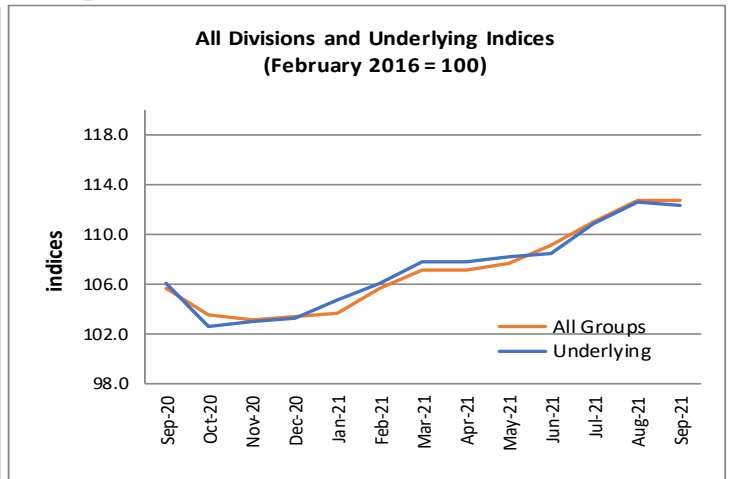
Graph.6



Graph.7



Graph.8



Graph.9

