

Please address all correspondence
To Government Statistician
In reply, please quote the file reference



File Ref: CPI 1/2021

GOVERNMENT OF SAMOA

SAMOA BUREAU OF STATISTICS

CONSUMER PRICE INDEX JANUARY 2021

Key findings:

The Consumer Price Index for January 2021 increased by 0.3 percent compared to the previous month.

- The Food and Non Alcoholic Beverages index increased by 1.7 percent.
- Housing, Water, Electricity, Gas and other Fuels index decreased by 5.5 percent.
- The Average Annual Inflation for the year ended January 2021 was negative 2.4 percent.

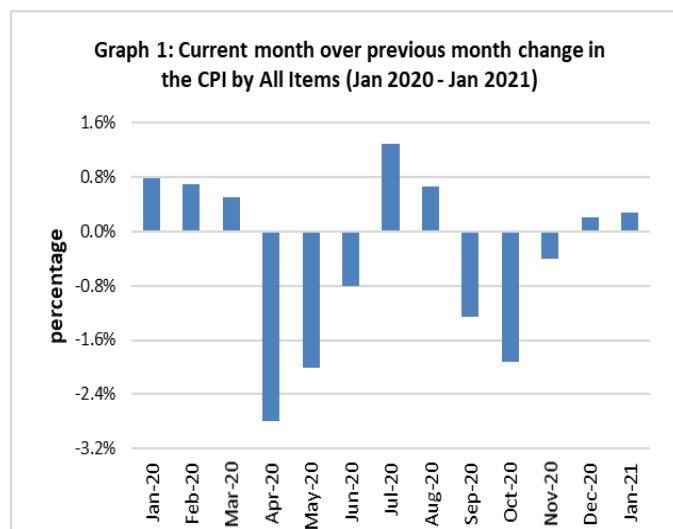
The CPI fell 5.5 percent from January 2020.

SUMMARY

The Consumer Price Index for January 2021 was 0.3 percent higher than December 2020, and was 5.5 percent lower than January 2020.

The increase of the Imported Goods component by 1.8 percent from the previous month was due to higher prices for imported food, spirits, medicine and washing soap which were also the contributors to the increase of 0.3 percent in the All Items Consumer Price Index.

The Local Goods Component recorded a decrease of 1.2 percent compared to the previous month. Graph 1 shows the month to month percentage changes in the Consumer Price Index by all Divisions from January 2020 to January 2021.

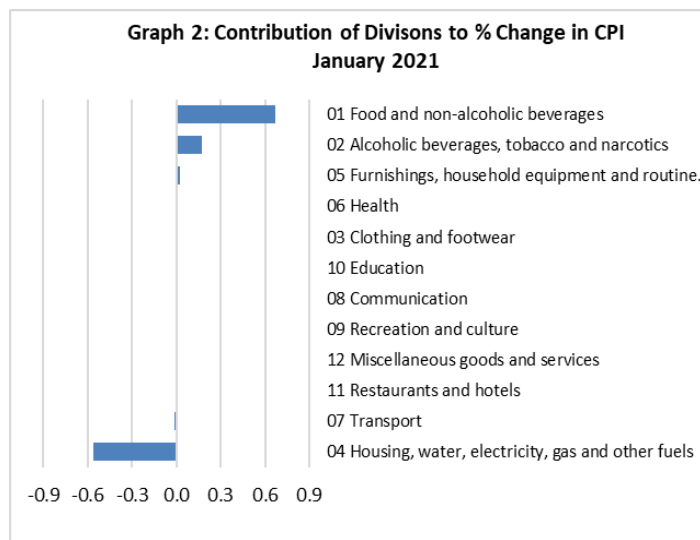


Source : Samoa Bureau of Statistics

Total All Divisions Contribution

As depicted in Graph 2, Food and Non Alcoholic Beverages and Alcoholic Beverages and Tobacco divisions were the main contributors to the overall increase of 0.3 percent in the All Division Consumer Price Index.

On the other hand, there was offsetting negative contribution from the Housing, Water, Electricity, Gas and other Fuels division with 0.58 percent, negative contribution.



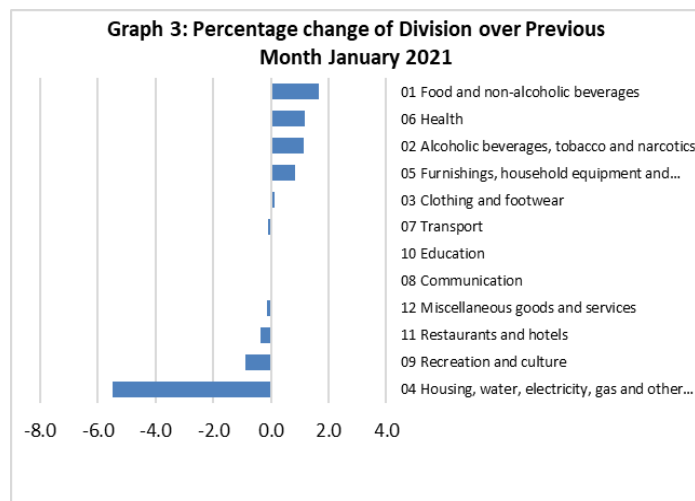
Source : Samoa Bureau of Statistics

Consumer Price Index (% Change)

The 0.3 percent increase in the Overall Index was mainly due to an increase of 1.7 percent in Food and Non Alcoholic Beverages index. Increases were also recorded for the Alcoholic Beverages and Tobacco index with 1.2 percent, Health index with 1.2 percent, Furnishing, Household Equipment and Maintenance with 0.9 percent and Clothing and Footwear index with 0.1 percent.

On the contrary, Housing, Water, Electricity, Gas and other Fuels index showed a decrease of 5.5 percent. The Recreation and Culture and Restaurants indices showed decreases of 0.9 and 0.4 percent, while Transport and Miscellaneous Goods and Services indices both registered decreases of 0.1 percent.

No changes were recorded for Communication and Education indices. Graphically presented in Graph 3 is the January 2021 percentage change for all divisions from December 2020.



Source : Samoa Bureau of Statistics

Imported Goods Component

The Imported Goods Component of the Consumer Price Index registered an increase of 1.8 percent when compared to the previous month. This increase was mainly due to higher prices recorded for chicken leg quarter, mutton flap, onion, potatoes, spirits, medicine and washing soap.

Local Goods Component

Decreased prices recorded for electricity (kwh), taro, fresh fish (piece and large), koko samoa and taamu resulted in the 1.2 percent decrease in the Local Good Component.

Food and Non Alcoholic Beverages Index

An increase of 1.7 percent in the Food and Non Alcoholic Beverages index was a reflection of the higher prices recorded for chicken leg quarter, mutton flap, fresh fish (string), chinese cabbage, eggs, onion, cucumber, potatoes and head cabbage.

Alcoholic Beverages and Tobacco Index

The Alcoholic Beverages and Tobacco index recorded an increase of 1.2 percent higher due to the rise in prices recorded for beer, spirit and samoan kava.

Health Index

The 1.2 percent increase in the Health index influenced by the higher prices recorded for medicine (amoxicillin tablets).

Housing, Water, Electricity, Gas and other Fuels Index

Lower prices recorded for electricity (kwh) and paint is resulted in the 5.5 percent decrease in the Housing, Water, Electricity, Gas and other Fuels index.

Recreation and Culture Index

The 0.9 percent decrease in the Recreation and Culture index was result in the lower prices recorded for exercise book.

Restaurants Index

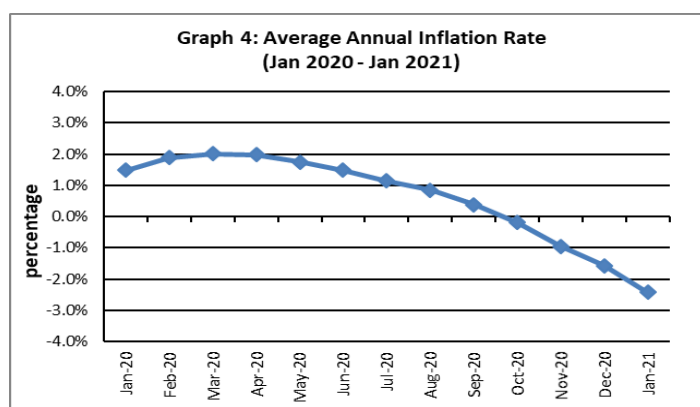
Decreased prices recorded for takeaway meal is reflected in the 0.4 percent decrease in the Restaurants index.

Underlying Indices ^{1/}

The All Items Underlying Index for January 2021 registered an increase of 1.4 percent when compared to December 2020, and a decrease of 2.3 percent when compared to January 2020. The Imported Items Underlying Index registered an increase of 2.1 percent, while the Local Items Underlying Index recorded no change from the previous month.

Inflation Rate

The average annual inflation rate for the year ended January 2021 was negative 2.4 percent. For the twelve months ending January 2020 the inflation rate was 1.5 percent. Presented in Graph 4 is the average annual inflation rate (January 2020 - January 2021).



Source : Samoa Bureau of Statistics

The attached Tables and Graphs provide the user with more detailed analysis.

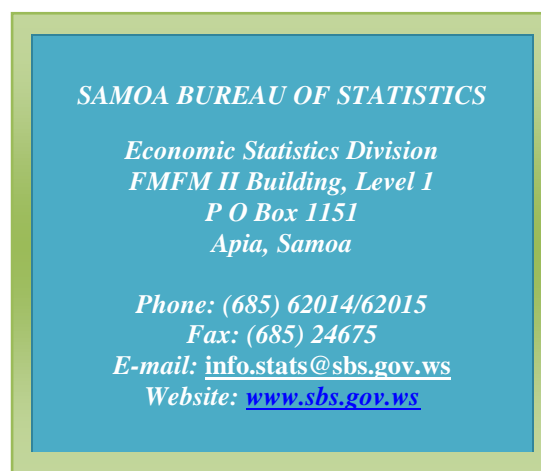
Technical Notes:

The Consumer Price (CPI) measures the rate of inflation for Samoa. It is designed to measure the change in prices for the goods and services purchased by households in Samoa. The CPI measures the change in prices by comparing the prices for a basket of goods and services at the collection period with the price for the same goods in a base period.

The basket of goods that is priced is based on the average expenditures of households as recorded in the Household Income and Expenditure Survey (HIES). The HIES survey identifies how much households spend on different items. The more households spend on an item on average, the more important it is to the price index, and the higher the weight in the index.

^{1/} Monthly movements in the 'headline' CPI series can be volatile. This volatility reflects price changes in particular items that may be due, among other factors, to fluctuations in commodity markets and agricultural conditions, policy changes, or seasonal or infrequent price resetting.

Underlying inflation is a measure of inflation that excludes certain items that face volatile price movements. Underlying inflation eliminates products that can have temporary price shocks because these shocks can diverge from the overall trend of inflation and give a false measure of inflation.



Date of release: 11th February 2021.

The next Consumer Price Index will be released on 9th March 2021.

Mātaao Edith N Taosoga-Faaola
ACTING GOVERNMENT STATISTICIAN

Table 1. CONSUMER PRICE INDEX.

(Base Period : Average Prices February 2016 = 100)

Group	All Items	Food and Non Alcoholic Beverages	Alcoholic Beverages, Tobacco and Narcotics	Clothing and Footwear	Housing, Water, Electricity, Gas and other Fuels	Furnishings, Household Equipment, and Maintenance	Health	Transport	Communication	Recreation and Culture	Education	Restaurants	Miscellaneous goods and services
<i>Weights</i>	1000.0	403.7	128.4	21.2	119.6	30.8	4.6	148.5	51.5	6.1	19.7	22.4	43.5
<i>Ave - 2018</i>	107.2	111.0	112.3	95.3	91.0	98.0	97.0	115.0	103.3	92.6	110.4	99.0	97.8
<i>Ave - 2019</i>	108.3	112.1	116.8	93.8	95.0	96.4	100.0	111.3	104.2	88.7	113.5	103.3	97.8
<i>Ave - 2020</i>	106.6	110.4	120.0	93.5	89.6	98.1	99.2	104.4	104.2	88.5	114.9	109.4	98.8
<i>2020</i>													
<i>January</i>	109.7	112.7	119.7	93.3	99.1	96.8	100.1	112.6	104.2	89.5	114.9	108.3	98.0
<i>February</i>	110.5	115.1	119.3	93.5	97.3	97.6	100.1	113.0	104.2	89.5	114.9	108.3	97.7
<i>March</i>	111.0	117.1	119.3	93.5	96.6	97.7	100.1	111.8	104.2	89.5	114.9	108.3	97.9
<i>April</i>	107.9	113.2	118.9	93.5	86.3	98.1	100.1	109.8	104.2	88.0	114.9	108.3	98.8
<i>May</i>	105.8	110.5	118.9	93.5	86.0	98.8	100.1	102.3	104.2	88.0	114.9	108.3	99.7
<i>June</i>	104.9	110.6	119.1	93.5	85.4	98.5	97.6	96.8	104.2	88.0	114.9	108.3	99.9
<i>July</i>	106.3	113.1	120.8	93.4	85.4	97.7	97.6	97.8	104.2	88.0	114.9	108.3	99.8
<i>August</i>	107.0	113.7	121.0	93.7	85.2	98.3	97.6	100.8	104.2	88.6	114.9	108.9	99.3
<i>September</i>	105.6	108.9	120.9	93.7	88.7	98.0	97.6	101.6	104.2	88.6	114.9	111.4	98.9
<i>October</i>	103.6	103.7	120.9	93.7	88.4	98.0	97.6	102.6	104.2	88.1	114.9	111.4	98.5
<i>November</i>	103.2	102.8	120.9	93.7	88.3	98.5	99.4	102.2	104.2	88.1	114.9	111.4	98.5
<i>December</i>	103.4	103.3	120.4	93.3	88.5	98.8	102.4	102.2	104.2	88.1	114.9	111.4	99.1
<i>2021</i>													
<i>January (P)</i>	103.7	105.0	121.8	93.4	83.6	99.6	103.6	102.1	104.2	87.3	114.9	111.0	99.0
<u>Percentage Change (P)</u>													
<i>Jan 2021 over Dec 2020</i>	0.3%	1.7%	1.2%	0.1%	-5.5%	0.9%	1.2%	-0.1%	0.0%	-0.9%	0.0%	-0.4%	-0.1%
<i>Jan 2021 over Jan 2020</i>	-5.5%	-6.8%	1.8%	0.2%	-15.6%	2.9%	3.5%	-9.3%	0.0%	-2.5%	0.0%	2.5%	1.0%

Source : Samoa Bureau Statistics

(P) : Provisional figures

Note : n.a. Not applicable

Table 2. ALL ITEMS UNDERLYING INDEX

(Base Period : Average Prices February 2016 = 100)

Group	All Items	Food and Non Alcoholic Beverages	Alcoholic Beverages, Tobacco and Narcotics	Clothing and Footwear	Housing, Water, Electricity, Gas and other Fuels	Furnishings, Household Equipment, and Maintenance	Health	Transport	Communication	Recreation and Culture	Education	Restaurants	Miscellaneous goods and services
<i>Weights</i>	586.7	345.3	<i>n.a</i>	21.2	24.2	30.8	3.5	26.4	51.5	5.6	12.3	22.4	43.5
<i>Ave - 2018</i>	106.6	110.8		95.3	93.4	98.0	96.0	110.8	103.3	92.0	114.0	99.0	97.8
<i>Ave - 2019</i>	107.2	111.6		93.8	94.6	96.4	100.1	108.1	104.2	87.9	118.5	103.3	97.8
<i>Ave - 2020</i>	106.6	109.9		93.5	93.7	98.1	98.9	110.1	104.2	87.6	120.6	109.4	98.8
2020													
January	107.2	111.3		93.3	94.8	96.8	100.1	106.9	104.2	88.7	120.6	108.3	98.0
February	109.1	114.5		93.5	94.6	97.6	100.1	106.9	104.2	88.7	120.6	108.3	97.7
March	110.3	116.5		93.5	94.0	97.7	100.1	106.9	104.2	88.7	120.6	108.3	97.9
April	108.3	112.8		93.5	93.6	98.1	100.1	110.3	104.2	87.0	120.6	108.3	98.8
May	106.7	109.9		93.5	95.0	98.8	100.1	110.2	104.2	87.0	120.6	108.3	99.7
June	106.7	109.8		93.5	95.2	98.5	96.8	110.4	104.2	87.0	120.6	108.3	99.9
July	108.1	112.2		93.4	95.5	97.7	96.8	110.4	104.2	87.0	120.6	108.3	99.8
August	108.3	112.8		93.7	93.0	98.3	96.8	110.0	104.2	87.8	120.6	108.9	99.3
September	106.0	108.6		93.7	93.3	98.0	96.8	111.9	104.2	87.8	120.6	111.4	98.9
October	102.6	103.1		93.7	91.8	98.0	96.8	111.3	104.2	87.2	120.6	111.4	98.5
November	103.0	103.4		93.7	91.9	98.5	99.2	113.2	104.2	87.2	120.6	111.4	98.5
December	103.3	103.8		93.3	92.2	98.8	103.1	113.3	104.2	87.2	120.6	111.4	99.1
2021													
January (P)	104.7	106.3		93.4	91.5	99.6	104.7	113.3	104.2	86.3	120.6	111.0	99.0
<u>Percentage Change (P)</u>													
Jan 2021 over Dec 2020	1.4%	2.4%		0.1%	-0.7%	0.9%	1.6%	0.0%	0.0%	-1.0%	0.0%	-0.4%	-0.1%
Jan 2021 over Jan 2020	-2.3%	-4.5%		0.2%	-3.5%	2.9%	4.6%	5.9%	0.0%	-2.7%	0.0%	2.5%	1.0%

Source : Samoa Bureau Statistics

(P) : Provisional figures

Note : n.a. Not applicable

Table 3. AVERAGE RETAIL PRICES OF SELECTED COMMODITIES

Commodities	Wt	Unit	2019		2020		2021	
			Nov	Dec	Jan	Nov	Dec	Jan (P)
01 Food and non-alcoholic beverages								
Leg Quarters Chicken	62.2	kg	4.88	4.70	4.41	3.16	3.16	3.42
Raw Sugar	21.3	kg	2.42	2.38	2.39	2.49	2.51	2.51
Bread	17.2	loaf	1.67	1.70	1.70	1.64	1.66	1.64
Corned Beef (a)	15.9	340 grms	8.03	8.03	8.03	8.20	8.20	8.25
Taro	15.2	kg	2.56	2.60	2.72	2.21	1.82	1.71
Re-packed medium grain rice	13.4	kg	2.94	2.95	2.90	2.60	2.55	2.63
Prepacked medium grain rice (a)	13.4	907 grms	2.97	2.82	2.82	2.85	2.85	2.85
Canned fish betw een \$3.00 and \$3.99 Natural Oil	12.7	425 grms	3.37	3.39	3.31	3.37	3.37	3.41
Bongo	10.2	20 grms	0.80	0.80	0.80	0.83	0.83	0.83
Keke Saina Biscuits (a)	9.2	pkt 10	6.27	6.38	6.38	6.17	6.17	6.17
Ice Cream (a)	9.2	2 ltr	15.18	15.33	15.33	15.33	15.33	15.37
Ramen	9.0	85 gms	1.09	1.07	1.07	1.03	1.00	1.00
Fish (Piece)	7.9	kg	17.27	18.98	23.28	20.31	21.20	18.45
Butter	7.7	454 grms	15.77	15.77	15.77	15.44	15.61	15.76
Round Pancake (a)	7.5	sml	0.15	0.15	0.15	0.15	0.15	0.15
Mutton Flaps	6.6	kg	21.50	21.49	23.09	24.26	24.09	24.22
Canned fish \$4:00 or over N/Oil	6.4	425 grms	4.89	4.98	4.98	4.98	5.10	5.06
Canned fish under \$3.00 in N/Oil	6.4	425 grms	2.62	2.62	2.62	2.82	2.80	2.75
Wings Turkey	6.3	kg	8.20	8.43	7.85	7.48	7.96	7.94
Fish (string)	6.0	kg	10.81	10.61	12.72	9.87	9.67	10.06
Fish (large)	6.0	kg	15.61	16.54	18.57	16.43	17.29	15.87
02 Alcoholic beverages, tobacco and narcotics								
Lager Beer	37.9	355 mls	3.58	3.58	3.67	3.63	3.63	3.68
Pall Mall Filter Cigarettes (Red)	24.3	20 rolls	13.80	13.80	14.20	14.60	14.60	14.60
Pall Mall Menthol Cigarettes (Green)	24.3	20 rolls	13.80	13.80	14.20	14.60	14.60	14.60
Beer (a)	16.3	330 mls	3.38	3.36	3.36	3.48	3.48	3.50
Tobacco (a)	12.6	30 grms	15.00	15.00	15.00	15.00	15.00	15.00
03 Clothing and footwear								
Uniform le Faitaga College boys	4.3	size 8-10	29.67	29.67	29.67	29.67	29.67	29.67
Uniform Pa'ave (a)	3.7	size 7	32.00	32.00	32.00	31.00	31.00	31.00
04 Housing, water, electricity, gas and other fuels								
Electricity Cashpow er	50.6	kw h	0.66	0.66	0.69	0.58	0.58	0.48
Reservoir treated Water	28.5	15-40 m3	1.67	1.67	1.67	1.47	1.47	1.47
Liquid gas	15.8	9kg	62.00	62.00	62.00	59.25	59.25	59.00
Government house Rent	12.2	2 b/room	650.00	650.00	650.00	650.00	650.00	650.00

05 Furnishings, household equipment and routine household maintenance

Washing powder (a)	6.3	200 grms	1.86	1.86	1.89	1.88	1.88	1.88
Soap yellow Washing soap	5.9	bar	2.85	2.81	2.76	2.73	2.79	2.90
Mosquito coil	4.4	10 coil	1.20	1.20	1.20	1.33	1.33	1.33

06 Health

Amoxicillin 500mg tablets (a)	2.5	20 tablets	7.58	7.58	7.58	7.17	7.50	7.67
Hospital Charge	1.1	per night	22.50	22.50	22.50	22.50	22.50	22.50

07 Transport

Petrol	60.8	1 ltr	2.69	2.66	2.74	2.18	2.18	2.17
Taxi Fare P.O to Motootua Hosp	8.2	per trip	4.80	4.80	4.80	4.80	4.80	4.80
Taxi Fares P.O to Malua	8.2	per trip	31.30	31.30	31.30	31.30	31.30	31.30
Taxi Fares P.O to Falefa	8.2	per trip	43.20	43.20	43.20	43.20	43.20	43.20
Air Fares Fagalii Pago Fagalii	6.8	return trip	395.00	395.00	395.00	395.00	395.00	395.00
Air Fares Apia Auckland Apia	6.8	1 month	2093.29	1157.50	1147.85	1257.87	1257.87	1257.87

08 Communication

Calling per minute Rate cell phone (a)	10.02	per minute	0.43	0.43	0.43	0.43	0.43	0.43
Internet data bundles per mb Rate (a)	10.02	per mb	0.25	0.25	0.25	0.25	0.25	0.25
Calling per minute Rate cell phone (a)	10.02	per minute	0.44	0.44	0.44	0.44	0.44	0.44
Internet data bundles per mb Rate (a)	10.02	per mb	0.20	0.20	0.20	0.20	0.20	0.20

09 Recreation and culture

Television LCD 32" (a)	2.30	LCD 32"	861.00	861.00	861.00	852.83	852.83	852.83
Exercise Book w arwick	1.44	1B4	1.47	1.47	1.47	1.40	1.40	1.37
Laptop (a)	1.33	each	2918.60	2918.60	2918.60	2938.60	2938.60	2938.60

10 Education

Fees PTA Primary Y Urban Registration fees (a)	7.23	Year 6	82.50	82.50	82.50	82.50	82.50	82.50
Fees PTA Secondary Y Urban Registration fees (a)	5.11	Year 10	58.00	58.00	58.00	58.00	58.00	58.00
Fees Tertiary NUS registration School Fees	3.79	registration	322.00	322.00	322.00	322.00	322.00	322.00
Fees Secondary Y Examination Fees (a)	3.61	Y12-13	25.50	25.50	25.50	25.50	25.50	25.50

11 Restaurants and hotels

Fish & Chip Meal	7.79	1 serve	9.17	9.17	9.17	9.58	9.58	10.08
Curry & Chopsuey Meal	4.87	1 serve	3.67	4.67	4.67	4.67	4.67	4.00
Chicken & Chips Meal (a)	4.87	1 serve	9.64	9.64	9.64	10.00	10.00	10.29
Steam rice & chicken Meal (a)	4.87	1 serve	4.83	4.83	4.83	5.00	5.00	5.00

12 Miscellaneous goods and services

Paper Sofan deluxe ply Toilet Paper	8.52	250 sheets	0.96	1.01	1.01	1.05	1.05	1.05
Hair Gel	4.59	1124 ml	4.60	4.60	4.60	4.40	4.76	4.76
Price for Storage of remains (a)	4.41	per day	60.00	60.00	60.00	60.00	60.00	60.00
Basic Casket (a)	4.41	each	1966.67	1966.67	1966.67	1966.67	1966.67	1966.67
Standard Embalming (a)	4.41	1 person	1500.00	1500.00	1500.00	1500.00	1500.00	1500.00
Toilet soap (a)	4.38	90g	1.96	1.95	1.95	1.97	1.97	1.97
Diapers (a)	4.19	5kg-10kg	8.99	8.99	8.63	8.14	8.14	8.14

Source : Samoa Bureau Statistics

(a) : New commodity from February 2016

(P) : Provisional figures

Note : Please note unit of conversion was in pound's (lb's) but been converted into kilograms (kg)

Table 4. IMPORTED GOODS COMPONENT OF THE CONSUMER PRICE INDEX

(Base Period : Average Prices February 2016 = 100)

Group	All Items	Food and Non Alcoholic Beverages	Alcoholic Beverages, Tobacco and Narcotics	Clothing and Footwear	Housing, Water, Electricity, Gas and other Fuels	Furnishings, Household Equipment and Maintenance	Health	Transport	Communication	Recreation and Culture	Education	Restaurants	Miscellaneous goods and services
<i>Weights</i>	494.7	269.1	23.8	15.2	28.3	26.9	2.5	88.6	<i>n.a</i>	5.6	<i>n.a</i>	<i>n.a</i>	34.7
<i>Ave - 2018</i>	111.9	113.8	113.5	96.1	100.6	97.6	94.3	124.0		92.0			96.6
<i>Ave - 2019</i>	111.1	114.5	118.3	93.7	100.8	95.8	97.9	117.3		87.9			96.7
<i>Ave - 2020</i>	107.9	112.2	117.1	93.2	96.0	97.7	95.8	107.4		87.6			98.0
2020													
January	111.5	113.8	117.8	93.4	101.0	96.3	97.5	121.4		88.7			96.9
February	113.8	118.1	117.8	93.4	101.3	97.2	97.5	120.8		88.7			96.5
March	114.8	120.7	117.4	93.1	100.3	97.3	97.5	119.2		88.7			96.8
April	111.6	116.0	117.4	93.1	98.0	97.8	97.5	115.8		87.0			97.9
May	107.7	112.6	117.4	93.1	96.7	98.6	97.5	104.0		87.0			99.0
June	105.7	112.4	117.4	93.1	94.3	98.3	92.7	94.7		87.0			99.3
July	107.6	115.2	117.4	93.0	94.4	97.3	92.7	96.4		87.0			99.2
August	108.8	115.9	117.4	93.4	93.6	98.0	92.7	101.4		87.8			98.5
September	105.9	110.4	116.1	93.4	94.1	97.7	92.7	102.7		87.8			98.0
October	102.2	103.2	116.1	93.4	92.8	97.6	92.7	104.4		87.2			97.5
November	102.4	103.7	117.1	93.4	92.3	98.2	96.3	103.8		87.2			97.5
December	102.7	104.1	115.8	92.9	93.0	98.5	101.8	103.8		87.2			98.3
2021													
January (P)	104.6	107.3	117.9	93.1	93.0	99.5	104.1	103.7		86.3			98.2
<u>Percentage Change (P)</u>													
Jan 2021 over Dec 2020	1.8%	3.0%	1.8%	0.2%	0.1%	1.0%	2.3%	-0.2%		-1.0%			-0.2%
Jan 2021 over Jan 2020	-6.2%	-5.8%	0.1%	-0.4%	-7.9%	3.3%	6.8%	-14.6%		-2.7%			1.3%

Source : Samoa Bureau Statistics

(P) : Provisional figures

Note : n.a. Not applicable

Table 5. IMPORTED ITEMS UNDERLYING INDEX

(Base Period : Average Prices February 2016 = 100)

Group	All Items	Food and Non Alcoholic Beverages	Alcoholic Beverages, Tobacco and Narcotics	Clothing and Footwear	Housing, Water , Electricity, Gas and other Fuels	Furnishings, Household Equipment and Maintenance	Health	Transport	Communication	Recreation and Culture	Education	Restaurants	Miscellaneous goods and services
Weights	401.2	269.1	n.a	15.2	24.2	26.9	2.5	23.0	n.a	5.6	n.a	n.a	34.7
Ave - 2018	108.8	113.8		96.1	93.4	97.6	94.3	111.2		92.0			96.6
Ave - 2019	108.9	114.5		93.7	94.6	95.8	97.9	108.1		87.9			96.7
Ave - 2020	107.6	112.2		93.2	93.7	97.7	95.8	110.4		87.6			98.0
2020													
January	108.4	113.8		93.4	94.8	96.3	97.5	106.7		88.7			96.9
February	111.3	118.1		93.4	94.6	97.2	97.5	106.7		88.7			96.5
March	113.0	120.7		93.1	94.0	97.3	97.5	106.7		88.7			96.8
April	110.2	116.0		93.1	93.6	97.8	97.5	110.6		87.0			97.9
May	108.1	112.6		93.1	95.0	98.6	97.5	110.4		87.0			99.0
June	108.0	112.4		93.1	95.2	98.3	92.7	110.7		87.0			99.3
July	109.8	115.2		93.0	95.5	97.3	92.7	110.7		87.0			99.2
August	110.1	115.9		93.4	93.0	98.0	92.7	110.2		87.8			98.5
September	106.5	110.4		93.4	93.3	97.7	92.7	112.4		87.8			98.0
October	101.4	103.2		93.4	91.8	97.6	92.7	111.7		87.2			97.5
November	102.0	103.7		93.4	91.9	98.2	96.3	113.9		87.2			97.5
December	102.4	104.1		92.9	92.2	98.5	101.8	113.9		87.2			98.3
2021													
January (P)	104.5	107.3		93.1	91.5	99.5	104.1	113.9		86.3			98.2
<u>Percentage Change (P)</u>													
Jan 2021 over Dec 2020	2.1%	3.0%		0.2%	-0.7%	1.0%	2.3%	0.0%		-1.0%			-0.2%
Jan 2021 over Jan 2020	-3.6%	-5.8%		-0.4%	-3.5%	3.3%	6.8%	6.8%		-2.7%			1.3%

Source : Samoa Bureau Statistics

(P) : Provisional figures

Note : n.a. Not applicable

Table 6. LOCAL GOODS COMPONENT OF THE CONSUMER PRICE INDEX

(Base Period : Average Prices February 2016 = 100)

Group	All Items	Food and Non Alcoholic Beverages	Alcoholic Beverages, Tobacco and Narcotics	Clothing and Footwear	Housing, Water , Electricity, Gas and other Fuels	Furnishings, Household Equipment and Maintenance	Health	Transport	Communication	Recreation and Culture	Education	Restaurants	Miscellaneous goods and services
Weights	505.3	134.6	104.6	6.0	91.3	3.9	2.2	59.9	51.5	0.4	19.7	22.4	8.8
Ave - 2018	102.6	105.3	112.0	93.3	88.1	100.3	100.0	101.7	103.3	100.0	110.4	99.0	102.3
Ave - 2019	105.5	107.3	116.5	93.8	93.2	100.3	102.5	102.3	104.2	100.0	113.5	103.3	102.3
Ave - 2020	105.3	106.8	120.7	94.2	87.6	100.3	103.0	100.1	104.2	100.0	114.9	109.4	102.3
2020													
January	108.0	110.5	120.1	92.9	98.6	100.3	103.0	99.6	104.2	100.0	114.9	108.3	102.3
February	107.3	109.0	119.7	93.7	96.0	100.3	103.0	101.4	104.2	100.0	114.9	108.3	102.3
March	107.3	109.9	119.7	94.4	95.4	100.3	103.0	100.8	104.2	100.0	114.9	108.3	102.3
April	104.3	107.5	119.3	94.4	82.6	100.3	103.0	100.8	104.2	100.0	114.9	108.3	102.3
May	103.9	106.4	119.3	94.4	82.6	100.3	103.0	99.9	104.2	100.0	114.9	108.3	102.3
June	104.1	106.9	119.5	94.4	82.6	100.3	103.0	99.9	104.2	100.0	114.9	108.3	102.3
July	105.0	108.8	121.6	94.4	82.6	100.3	103.0	99.9	104.2	100.0	114.9	108.3	102.3
August	105.2	109.2	121.8	94.4	82.6	100.3	103.0	99.9	104.2	100.0	114.9	108.9	102.3
September	105.3	105.9	122.0	94.4	87.1	100.3	103.0	99.9	104.2	100.0	114.9	111.4	102.3
October	105.0	104.8	121.9	94.4	87.1	100.3	103.0	99.9	104.2	100.0	114.9	111.4	102.3
November	103.9	100.8	121.8	94.4	87.1	100.3	103.0	99.9	104.2	100.0	114.9	111.4	102.3
December	104.0	101.6	121.5	94.4	87.1	100.3	103.0	99.9	104.2	100.0	114.9	111.4	102.3
2021													
January (P)	102.8	100.4	122.7	94.4	80.7	100.3	103.0	99.9	104.2	100.0	114.9	111.0	102.3
<u>Percentage Change (P)</u>													
Jan 2021 over Dec 2020	-1.2%	-1.2%	1.0%	0.0%	-7.3%	0.0%	0.0%	0.0%	0.0%	0.0%	0.0%	-0.4%	0.0%
Jan 2021 over Jan 2020	-4.8%	-9.1%	2.2%	1.7%	-18.1%	0.0%	0.0%	0.3%	0.0%	0.0%	0.0%	2.5%	0.0%

Source : Samoa Bureau Statistics

(P) : Provisional figures

Note : n.a. Not applicable

Table 7. LOCAL ITEMS UNDERLYING INDEX

(Base Period : Average Prices February 2016 = 100)

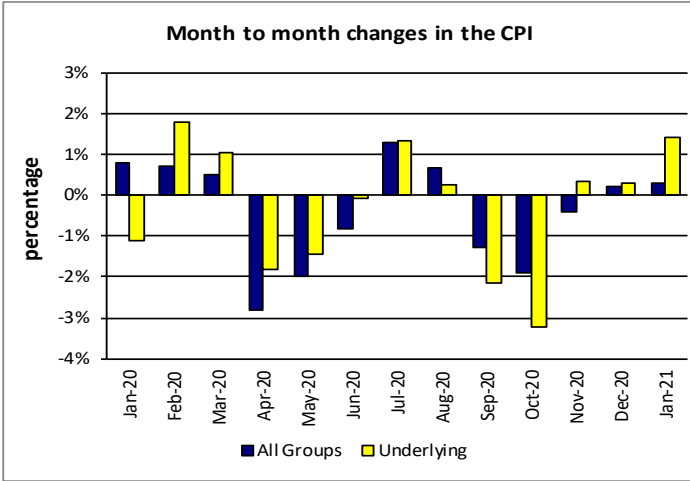
Group	All Items	Food and Non Alcoholic Beverages	Alcoholic Beverages, Tobacco and Narcotics	Clothing and Footwear	Housing, Water , Electricity, Gas and other Fuels	Furnishings, Household Equipment and Maintenance	Health	Transport	Communication	Recreation and Culture	Education	Restaurants	Miscellaneous goods and services
Weights	185.5	76.1	n.a	6.0	n.a	3.9	1.0	3.4	51.5	n.a	12.3	22.4	8.8
Ave - 2018	101.9	100.3		93.3		100.3	100.0	108.3	103.3		114.0	99.0	102.3
Ave - 2019	103.6	101.6		93.8		100.3	105.2	108.6	104.2		118.5	103.3	102.3
Ave - 2020	104.6	101.9		94.2		100.3	106.3	108.6	104.2		120.6	109.4	102.3
2020													
January	104.6	102.5		92.9		100.3	106.3	108.6	104.2		120.6	108.3	102.3
February	104.5	102.0		93.7		100.3	106.3	108.6	104.2		120.6	108.3	102.3
March	104.4	101.7		94.4		100.3	106.3	108.6	104.2		120.6	108.3	102.3
April	104.2	101.3		94.4		100.3	106.3	108.6	104.2		120.6	108.3	102.3
May	103.8	100.4		94.4		100.3	106.3	108.6	104.2		120.6	108.3	102.3
June	103.9	100.5		94.4		100.3	106.3	108.6	104.2		120.6	108.3	102.3
July	104.3	101.7		94.4		100.3	106.3	108.6	104.2		120.6	108.3	102.3
August	104.6	102.1		94.4		100.3	106.3	108.6	104.2		120.6	108.9	102.3
September	105.0	102.4		94.4		100.3	106.3	108.6	104.2		120.6	111.4	102.3
October	105.2	102.7		94.4		100.3	106.3	108.6	104.2		120.6	111.4	102.3
November	105.0	102.4		94.4		100.3	106.3	108.6	104.2		120.6	111.4	102.3
December	105.2	102.8		94.4		100.3	106.3	108.6	104.2		120.6	111.4	102.3
2021													
January (P)	105.2	102.8		94.4		100.3	106.3	108.6	104.2		120.6	111.0	102.3
<u>Percentage Change (P)</u>													
Jan 2021 over Dec 2020	0.0%	0.1%		0.0%		0.0%	0.0%	0.0%	0.0%		0.0%	-0.4%	0.0%
Jan 2021 over Jan 2020	0.5%	0.3%		1.7%		0.0%	0.0%	0.0%	0.0%		0.0%	2.5%	0.0%

Source : Samoa Bureau Statistics

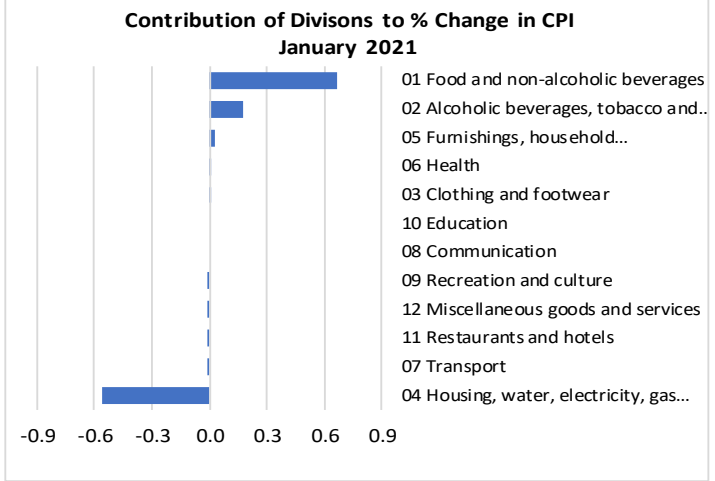
(P) : Provisional figures

Note : n.a. Not applicable

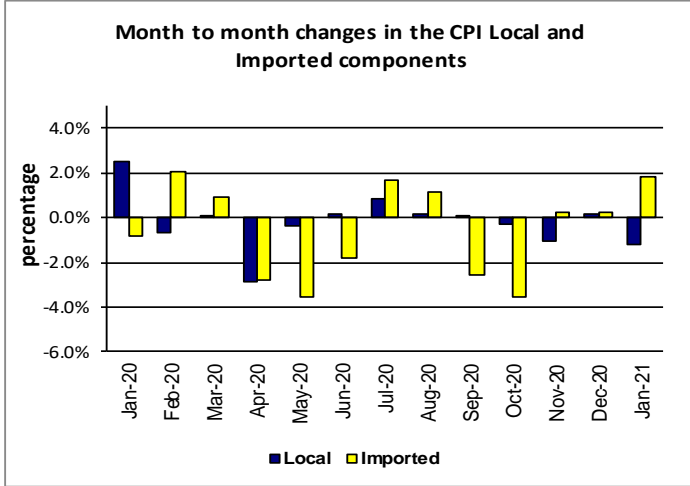
Graph.5



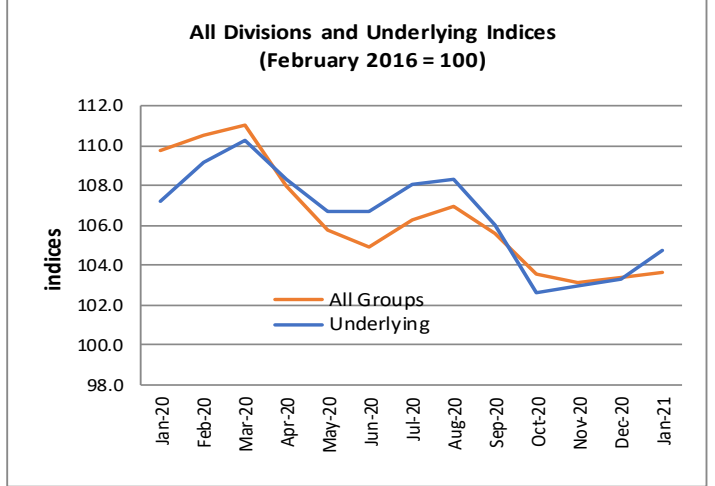
Graph.6



Graph.7



Graph.8



Graph.9

