

Please address all correspondence  
To Government Statistician  
In reply, please quote the file reference



GOVERNMENT OF SAMOA

File Ref: CPI 11/2021

## SAMOA BUREAU OF STATISTICS

# CONSUMER PRICE INDEX NOVEMBER 2021

### Key findings:

The Consumer Price Index for November 2021 decreased by 0.5 percent compared to the previous month.

- Housing, Water, Electricity, Gas and other Fuels index decreased by 12.0 percent driven by reduced electricity and water prices.
- The Food and Non Alcoholic Beverages index increased by 1.7 percent.
- The Average Annual Inflation for the year ended November 2021 was 1.8 percent.

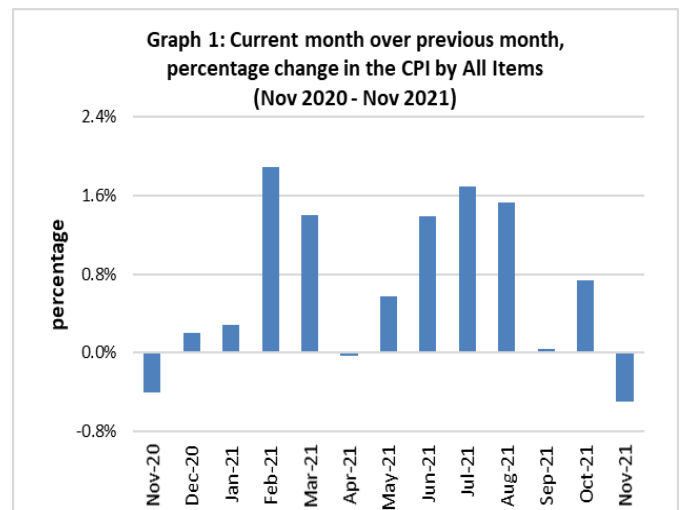
The CPI went up by 9.6 percent from November 2020.

### SUMMARY

The Consumer Price Index for November 2021 was 0.5 percent lower than in October 2021 and was 9.6 percent higher than November 2020.

The decrease of the Local Goods component by 0.9 percent from the previous month was due to lower prices for electricity (kwh), treated water and car registration, which were also the main contributors to the decrease of 0.5 percent in the All Items Consumer Price Index.

The Imported Goods Component also registered a decrease of 0.1 percent from the previous month. Graph 1 shows the month to month percentage change in the Consumer Price Index by All Divisions from November 2020 to November 2021.

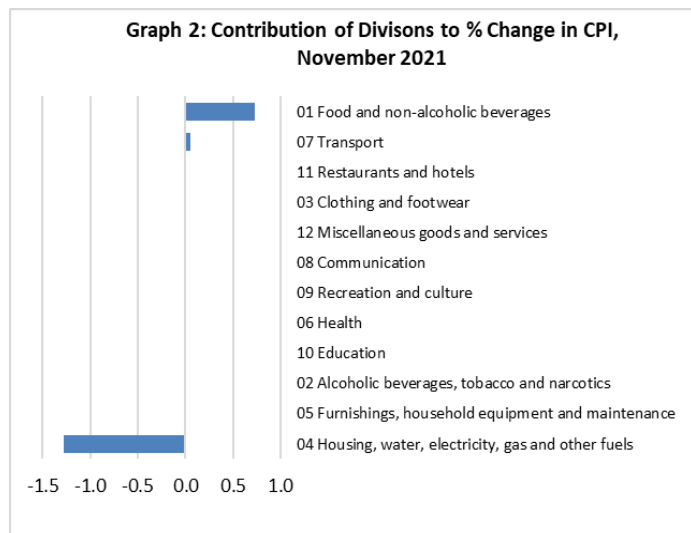


Source : Samoa Bureau of Statistics

## Total All Divisions Contribution

As depicted in Graph 2, Housing, Water, Electricity, Gas and other Fuels division was the main contributor to the overall decrease of 0.5 percent in the Consumer Price Index having a contribution of -1.3 percentage-point.

On the other hand, there were offsetting contributions from Food & Non Alcoholic Beverages and Transport having positive contributions of 0.7 and 0.1 percentage points respectively.



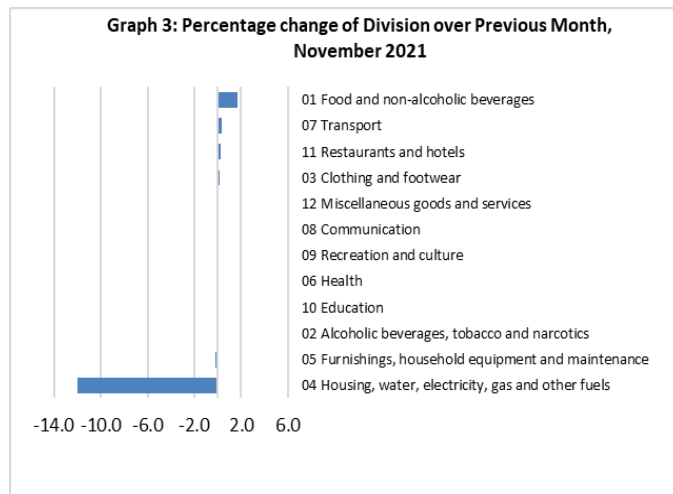
Source : Samoa Bureau of Statistics

## Consumer Price Index (% Change)

Housing, Water, Electricity, Gas and other Fuels index had the biggest decline of 12 percent when compared to the previous month followed by Furnishing, Household Equipment and Maintenance index which registered a decrease of 0.2 percent.

On the other hand, increases were registered for Food and Non Alcoholic Beverages index with 1.7 percent, Transport index with 0.3 percent, Restaurants index with 0.3 percent and Clothing and Footwear index with 0.2 percent.

No changes were recorded for the Alcoholic Beverages and Tobacco, Health, Communication, Recreation and Culture, Education and Miscellaneous Goods and Services indices. Graphically presented in Graph 3 is the percentage change in the indices for each division for November 2021 when compared to October 2021.



Source : Samoa Bureau of Statistics

## Local Goods Component

The Local Goods Component of the Consumer Price Index recorded a decrease of 0.9 percent when compared to the previous month. This was mainly due to lower prices recorded for electricity (kwh), treated water and car registration.

## Imported Goods Component

Decreased prices recorded for chicken leg quarter, canned fish, mutton flap and onion have resulted in the 0.1 percent decrease in the Imported Good Component.

## Housing, Water, Electricity, Gas and other Fuels Index

The 12.0 percent decrease in the Housing, Water, Electricity, Gas and other Fuels index was a result of the lower prices recorded for electricity (kwh), treated water and timber.

## Food and Non Alcoholic Beverages Index

An increase of 1.7 percent in the Food and Non Alcoholic Beverages index was a reflection of the higher prices recorded for taro, fresh fish (piece, string and large), turkey wings, Chinese cabbage, salted beef, pig trotter, banana and taamu.

## Transport Index

Higher prices recorded for fuel (petrol and diesel) led to the 0.3 percent increase in the Transport index.

## Restaurants Index

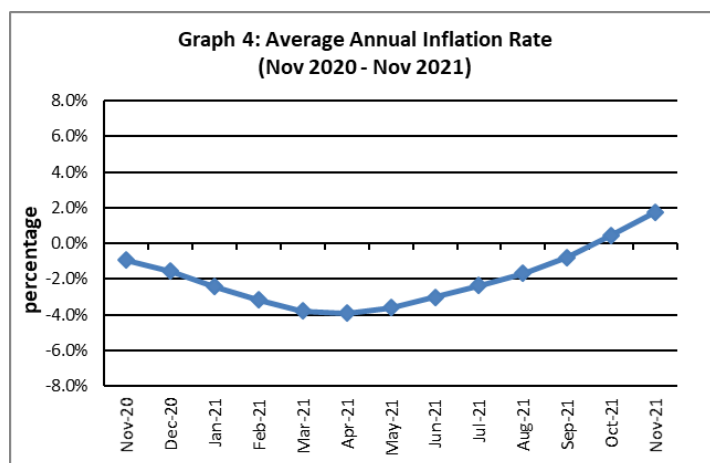
Increased prices recorded for meal (fish & chip) is reflected in the 0.3 percent increase in the Restaurants index

## Underlying Indices <sup>1/</sup>

The All Items Underlying Index for November 2021 registered a decrease of 0.4 percent when compared to October 2021, and an increase of 9.8 percent when compared to November 2020. The Imported Items Underlying Index registered a decrease of 0.6 percent, while the Local Items Underlying Index recorded an increase of 0.2 percent from the previous month.

## Inflation Rate

The average annual inflation rate for the year ended November 2021 was 1.8 percent. For the twelve months ending November 2020, the inflation rate was negative 0.9 percent. Presented in Graph 4 is the average annual inflation rate from November 2020 to November 2021.



Source : Samoa Bureau of Statistics

The attached Tables and Graphs provide the user with more detailed analysis.

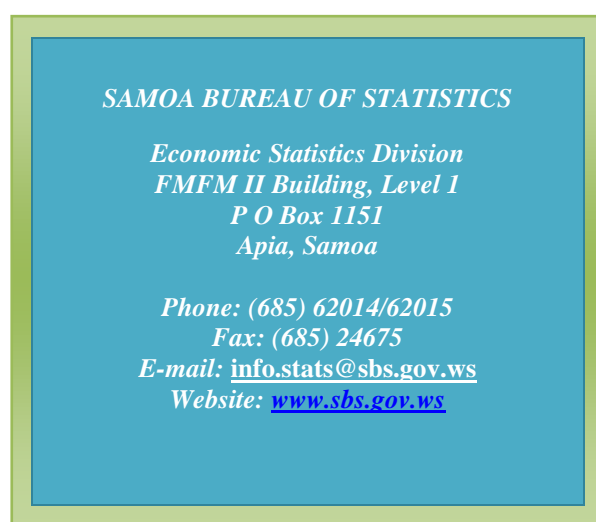
## Technical Notes:

The Consumer Price (CPI) measures the rate of inflation for Samoa. It is designed to measure the change in prices for the goods purchased by households in Samoa. The CPI measures the change in prices by comparing the prices for a basket of goods and services at the collection period with the price for the same goods in a base period.

The basket of goods that is priced is based on the average expenditures of households as recorded in the Household Income and Expenditure Survey (HIES). The HIES survey identifies how much households spend on different items. The more households spend on an item on average, the more important it is to the price index, and the higher the weight in the index.

<sup>1/</sup> Monthly movements in the 'headline' CPI series can be volatile. This volatility reflects price changes in particular items that may be due, among other factors, to fluctuations in commodity markets and agricultural conditions, policy changes, or seasonal or infrequent price resetting.

Underlying inflation is a measure of inflation that excludes certain items that face volatile price movements. Underlying inflation eliminates products that can have temporary price shocks because these shocks can diverge from the overall trend of inflation and give a false measure of inflation.



Date of release: 9<sup>th</sup> December 2021.

The next Consumer Price Index will be released on 12<sup>th</sup> January 2022.

Leota Aliielua Salani.

**ACTING GOVERNMENT STATISTICIAN/  
(ACTING CEO)**

**Table 1. CONSUMER PRICE INDEX.**

**(Base Period : Average Prices February 2016 = 100)**

Group	All Items	Food and Non Alcoholic Beverages	Alcoholic Beverages, Tobacco and Narcotics	Clothing and Footwear	Housing, Water, Electricity, Gas and other Fuels	Furnishings, Household Equipment, and Maintenance	Health	Transport	Communication	Recreation and Culture	Education	Restaurants	Miscellaneous goods and services
<i>Weights</i>	<b>1000.0</b>	<b>403.7</b>	<b>128.4</b>	<b>21.2</b>	<b>119.6</b>	<b>30.8</b>	<b>4.6</b>	<b>148.5</b>	<b>51.5</b>	<b>6.1</b>	<b>19.7</b>	<b>22.4</b>	<b>43.5</b>
Ave - 2018	107.2	111.0	112.3	95.3	91.0	98.0	97.0	115.0	103.3	92.6	110.4	99.0	97.8
Ave - 2019	108.3	112.1	116.8	93.8	95.0	96.4	100.0	111.3	104.2	88.7	113.5	103.3	97.8
Ave - 2020	106.6	110.4	120.0	93.5	89.6	98.1	99.2	104.4	104.2	88.5	114.9	109.4	98.8
2020													
November	103.2	102.8	120.9	93.7	88.3	98.5	99.4	102.2	104.2	88.1	114.9	111.4	98.5
December	103.4	103.3	120.4	93.3	88.5	98.8	102.4	102.2	104.2	88.1	114.9	111.4	99.1
2021													
January	103.7	105.0	121.8	93.4	83.6	99.6	103.6	102.1	104.2	87.3	114.9	111.0	99.0
February	105.6	108.5	121.5	92.7	87.3	98.1	104.8	104.7	104.2	87.6	109.4	111.0	97.7
March	107.1	111.1	121.5	92.7	87.6	99.6	105.0	107.1	104.2	87.0	109.4	111.0	97.3
April	107.1	109.8	121.5	92.7	88.8	99.3	104.3	109.6	104.2	87.0	109.4	111.0	97.4
May	107.7	110.5	121.5	92.5	88.9	98.6	105.0	111.5	104.2	88.3	109.4	111.0	97.5
June	109.2	111.9	121.7	93.5	97.2	98.0	105.0	111.5	104.2	89.3	109.4	111.0	95.9
July	111.0	115.3	121.8	104.9	97.5	98.3	105.0	112.5	104.2	88.8	109.4	111.0	96.8
August	112.7	118.5	121.4	104.8	98.8	98.9	107.0	114.1	104.2	88.3	109.4	111.4	97.1
September	112.8	117.9	121.6	104.5	98.9	99.2	107.0	115.9	104.2	88.3	109.4	111.4	96.9
October	113.6	118.1	121.6	104.9	101.0	98.9	107.0	115.1	115.9	89.0	109.4	111.4	96.9
November	113.0	120.1	121.6	105.1	88.9	98.7	107.0	115.5	115.9	89.0	109.4	111.7	96.9
<b><u>Percentage Change (P)</u></b>													
Nov 2021													
over	-0.5%	1.7%	0.0%	0.2%	-12.0%	-0.2%	0.0%	0.3%	0.0%	0.0%	0.0%	0.3%	0.0%
Oct 2021													
Nov 2021													
over	9.6%	16.9%	0.6%	12.2%	0.6%	0.3%	7.6%	13.0%	11.2%	1.0%	-4.7%	0.2%	-1.6%
Nov 2020													

Source : Samoa Bureau Statistics

(P) : Provisional figures

**Table 2. ALL ITEMS UNDERLYING INDEX**

(Base Period : Average Prices February 2016 = 100)

Group	All Items	Food and Non Alcoholic Beverages	Alcoholic Beverages, Tobacco and Narcotics	Clothing and Footwear	Housing, Water, Electricity, Gas and other Fuels	Furnishings, Household Equipment, and Maintenance	Health	Transport	Communication	Recreation and Culture	Education	Restaurants	Miscellaneous goods and services
<i>Weights</i>	<b>586.7</b>	<b>345.3</b>	<i>n.a</i>	<b>21.2</b>	<b>24.2</b>	<b>30.8</b>	<b>3.5</b>	<b>26.4</b>	<b>51.5</b>	<b>5.6</b>	<b>12.3</b>	<b>22.4</b>	<b>43.5</b>
Ave - 2018	106.6	110.8		95.3	93.4	98.0	96.0	110.8	103.3	92.0	114.0	99.0	97.8
Ave - 2019	107.2	111.6		93.8	94.6	96.4	100.1	108.1	104.2	87.9	118.5	103.3	97.8
Ave - 2020	106.6	109.9		93.5	93.7	98.1	98.9	110.1	104.2	87.6	120.6	109.4	98.8
2020													
November	103.0	103.4		93.7	91.9	98.5	99.2	113.2	104.2	87.2	120.6	111.4	98.5
December	103.3	103.8		93.3	92.2	98.8	103.1	113.3	104.2	87.2	120.6	111.4	99.1
2021													
January	104.7	106.3		93.4	91.5	99.6	104.7	113.3	104.2	86.3	120.6	111.0	99.0
February	106.1	109.3		92.7	91.2	98.1	106.3	112.7	104.2	86.6	111.9	111.0	97.7
March	107.8	111.9		92.7	92.4	99.6	106.7	114.0	104.2	86.0	111.9	111.0	97.3
April	107.8	111.9		92.7	92.1	99.3	105.7	114.0	104.2	86.0	111.9	111.0	97.4
May	108.1	112.5		92.5	92.5	98.6	106.7	114.0	104.2	87.4	111.9	111.0	97.5
June	108.4	113.2		93.5	92.7	98.0	106.7	113.9	104.2	88.5	111.9	111.0	95.9
July	110.9	116.6		104.9	93.0	98.3	106.7	113.5	104.2	88.0	111.9	111.0	96.8
August	112.6	119.4		104.8	93.7	98.9	109.3	113.5	104.2	87.4	111.9	111.4	97.1
September	112.3	118.8		104.5	94.0	99.2	109.3	113.5	104.2	87.4	111.9	111.4	96.9
October	113.5	118.8		104.9	97.5	98.9	109.3	113.8	115.9	88.1	111.9	111.4	96.9
November (P)	113.1	117.9		105.1	99.2	98.7	109.3	113.8	115.9	88.1	111.9	111.7	96.9
<b><u>Percentage Change (P)</u></b>													
Nov 2021													
over	-0.4%	-0.7%		0.2%	1.7%	-0.2%	0.0%	0.0%	0.0%	0.0%	0.0%	0.3%	0.0%
Oct 2021													
Nov 2021													
over	9.8%	14.0%		12.2%	7.9%	0.3%	10.2%	0.5%	11.2%	1.1%	-7.2%	0.2%	-1.6%
Nov 2020													

Source : Samoa Bureau Statistics

(P) : Provisional figures

Note : n.a. Not applicable

**Table 3. AVERAGE RETAIL PRICES OF SELECTED COMMODITIES**

Commodities	Wt	Unit	2020			2021		
			Sep	Oct	Nov	Sep	Oct	Nov (P)
<b>01 Food and non-alcoholic beverages</b>								
Leg Quarters Chicken	62.2	kg	3.80	3.10	3.16	5.08	4.98	4.83
Raw Sugar	21.3	kg	2.69	2.48	2.49	2.91	2.92	2.91
Bread	17.2	loaf	1.67	1.67	1.64	1.64	1.64	1.64
Corned Beef (a)	15.9	340 grms	8.20	8.20	8.20	8.55	8.55	8.55
Taro	15.2	kg	2.87	2.65	2.21	2.58	2.55	3.71
Re-packed medium grain rice	13.4	kg	2.83	2.72	2.60	2.65	2.67	2.79
Prepacked medium grain rice (a)	13.4	907 grms	2.85	2.85	2.85	2.77	2.80	2.80
Canned fish between \$3.00 and \$3.99 Natural Oil	12.7	425 grms	3.46	3.34	3.37	3.25	3.24	3.19
Bongo	10.2	20 grms	0.85	0.83	0.83	0.83	0.83	0.83
Keke Saina Biscuits (a)	9.2	pkt 10	6.17	6.17	6.17	6.14	6.14	6.13
Ice Cream (a)	9.2	2 ltr	15.33	15.33	15.33	15.58	15.52	15.60
Ramen	9.0	85 grms	1.09	1.09	1.03	1.11	1.11	1.11
Fish (Piece)	7.9	kg	21.95	21.49	20.31	24.32	23.92	25.82
Butter	7.7	454 grms	15.44	15.44	15.44	16.14	16.23	16.11
Round Pancake (a)	7.5	sml	0.15	0.15	0.15	0.15	0.15	0.15
Mutton Flaps	6.6	kg	24.74	24.33	24.26	24.84	27.75	25.04
Canned fish \$4:00 or over N/Oil	6.4	425 grms	5.11	5.20	4.98	4.82	4.69	4.69
Canned fish under \$3.00 in N/Oil	6.4	425 grms	3.61	3.38	3.41	2.67	2.70	2.73
Wings Turkey	6.3	kg	2.82	2.82	2.82	9.66	10.29	11.34
Fish (string)	6.0	kg	7.76	7.46	7.48	10.19	11.37	11.63
Fish (large)	6.0	kg	9.94	11.18	9.87	17.51	17.99	18.81
<b>02 Alcoholic beverages, tobacco and narcotics</b>								
Lager Beer	37.9	355 mls	3.63	3.63	3.63	3.65	3.65	3.65
Pall Mall Filter Cigarettes (Red)	24.3	20 rolls	14.60	14.60	14.60	14.60	14.60	14.60
Pall Mall Menthol Cigarettes (Green)	24.3	20 rolls	14.60	14.60	14.60	14.60	14.60	14.60
Beer (a)	16.3	330 mls	3.48	3.48	3.48	3.55	3.55	3.55
Tobacco (a)	12.6	30 grms	15.00	15.00	15.00	15.00	15.00	15.00
<b>03 Clothing and footwear</b>								
Uniform le Faitaga College boys	4.3	size 8-10	29.67	29.67	29.67	37.00	37.00	37.00
Uniform Pa'ave (a)	3.7	size 7	31.00	31.00	31.00	37.33	37.33	37.33
<b>04 Housing, water, electricity, gas and other fuels</b>								
Electricity Cashpower er	50.6	kw h	0.58	0.58	0.58	0.69	0.72	0.58
Reservoir treated Water	28.5	15-40 m3	1.47	1.47	1.47	1.67	1.67	1.34
Liquid gas	15.8	9kg	59.25	59.25	59.25	59.25	62.50	62.50
Government house Rent	12.2	2 b/room	650.00	650.00	650.00	650.00	650.00	650.00
<b>05 Furnishings, household equipment and routine household maintenance</b>								
Washing powder (a)	6.3	200 grms	1.88	1.88	1.88	1.87	1.87	1.87
Soap yellow Washing soap	5.9	bar	2.72	2.71	2.73	2.83	2.81	2.76
Mosquito coil	4.4	10 coil	1.30	1.30	1.33	1.30	1.28	1.28

---

## 06 Health

Amoxicillin 500mg tablets (a)	2.5	20 tablets	7.00	7.00	7.17	8.50	8.50	8.50
Hospital Charge	1.1	per night	22.50	22.50	22.50	22.50	22.50	22.50

---

## 07 Transport

Petrol	60.8	1 ltr	2.15	2.21	2.18	2.85	2.81	2.86
Taxi Fare P.O to Motootua Hosp	8.2	per trip	4.80	4.80	4.80	4.80	4.80	4.80
Taxi Fares P.O to Malua	8.2	per trip	31.30	31.30	31.30	31.30	31.30	31.30
Taxi Fares P.O to Falefa	8.2	per trip	43.20	43.20	43.20	43.20	43.20	43.20
Air Fares Fagalii Pago Fagalii	6.8	return trip	395.00	395.00	395.00	395.00	395.00	395.00
Air Fares Apia Auckland Apia	6.8	1 month	1257.87	1257.87	1257.87	1257.87	1257.87	1257.87

---

## 08 Communication

Calling per minute Rate cell phone (a)	10.02	per minute	0.43	0.43	0.43	0.43	0.43	0.43
Internet data bundles per mb Rate (a)	10.02	per mb	0.25	0.25	0.25	0.25	0.25	0.25
Calling per minute Rate cell phone (a)	10.02	per minute	0.44	0.44	0.44	0.44	0.44	0.44
Internet data bundles per mb Rate (a)	10.02	per mb	0.20	0.20	0.20	0.20	0.32	0.32

---

## 09 Recreation and culture

Television LCD 32" (a)	2.30	LCD 32"	852.83	852.83	852.83	852.83	852.83	852.83
Exercise Book w arw ick	1.44	1B4	1.40	1.40	1.40	1.45	1.48	1.48
Laptop (a)	1.33	each	3018.60	2938.60	2938.60	2898.60	2898.60	2898.60

---

## 10 Education

Fees PTA Primary Y Urban Registration fees (a)	7.23	Year 6	82.50	82.50	82.50	72.50	72.50	72.50
Fees PTA Secondary Y Urban Registration fees (a)	5.11	Year 10	58.00	58.00	58.00	58.00	58.00	58.00
Fees Tertiary NUS registration School Fees	3.79	registration	322.00	322.00	322.00	322.00	322.00	322.00
Fees Secondary Y Examination Fees (a)	3.61	Y12-13	25.50	25.50	25.50	25.50	25.50	25.50

---

## 11 Restaurants and hotels

Fish & Chip Meal	7.79	1 serve	9.58	9.58	9.58	10.08	10.08	10.17
Curry & Chopsuey Meal	4.87	1 serve	4.67	4.67	4.67	4.00	4.00	4.00
Chicken & Chips Meal (a)	4.87	1 serve	10.00	10.00	10.00	10.43	10.43	10.43
Steam rice & chicken Meal (a)	4.87	1 serve	5.00	5.00	5.00	5.00	5.00	5.00

---

## 12 Miscellaneous goods and services

Paper Sofan deluxe ply Toilet Paper	8.52	250 sheets	1.05	1.05	1.05	1.00	1.00	1.00
Hair Gel	4.59	1124 ml	4.47	4.47	4.40	4.61	4.61	4.61
Price for Storage of remains (a)	4.41	per day	60.00	60.00	60.00	60.00	60.00	60.00
Basic Casket (a)	4.41	each	1966.67	1966.67	1966.67	1966.67	1966.67	1966.67
Standard Embalming (a)	4.41	1 person	1500.00	1500.00	1500.00	1500.00	1500.00	1500.00
Toilet soap (a)	4.38	90g	1.97	1.97	1.97	1.91	1.91	1.95
Diapers (a)	4.19	5kg-10kg	8.33	8.33	8.14	7.37	7.37	7.37

Source : Samoa Bureau Statistics

(a) : New commodity from February 2016

(P) : Provisional figures

Note : Please note unit of conversion was in pound's (lb's) but been converted into kilograms (kg)

**Table 4. IMPORTED GOODS COMPONENT OF THE CONSUMER PRICE INDEX**  
(Base Period : Average Prices February 2016 = 100)

Group	All Items	Food and Non Alcoholic Beverages	Alcoholic Beverages, Tobacco and Narcotics	Clothing and Footwear	Housing, Water, Electricity, Gas and other Fuels	Furnishings, Household Equipment and Maintenance	Health	Transport	Communication	Recreation and Culture	Education	Restaurants	Miscellaneous goods and services
<i>Weights</i>	<b>494.7</b>	<b>269.1</b>	<b>23.8</b>	<b>15.2</b>	<b>28.3</b>	<b>26.9</b>	<b>2.5</b>	<b>88.6</b>	<i>n.a</i>	<b>5.6</b>	<i>n.a</i>	<i>n.a</i>	<b>34.7</b>
Ave - 2018	111.9	113.8	113.5	96.1	100.6	97.6	94.3	124.0		92.0			96.6
Ave - 2019	111.1	114.5	118.3	93.7	100.8	95.8	97.9	117.3		87.9			96.7
Ave - 2020	107.9	112.2	117.1	93.2	96.0	97.7	95.8	107.4		87.6			98.0
2020													
November	102.4	103.7	117.1	93.4	92.3	98.2	96.3	103.8		87.2			97.5
December	102.7	104.1	115.8	92.9	93.0	98.5	101.8	103.8		87.2			98.3
2021													
January	104.6	107.3	117.9	93.1	93.0	99.5	104.1	103.7		86.3			98.2
February	107.3	111.1	117.9	92.3	93.9	97.8	106.4	107.9		86.6			96.5
March	109.9	114.5	117.9	92.3	95.5	99.5	106.9	112.0		86.0			96.0
April	110.7	114.4	117.9	92.4	96.3	99.2	105.4	116.1		86.0			96.2
May	112.1	115.8	118.9	92.4	96.8	98.4	106.9	119.4		87.4			96.3
June	112.4	116.5	119.2	93.8	97.0	97.7	106.9	119.3		88.5			94.3
July	115.7	120.9	119.2	109.1	98.1	98.0	106.9	120.9		88.0			95.4
August	118.3	124.4	119.2	108.9	99.4	98.7	110.6	123.7		87.4			95.8
September	118.4	123.7	119.2	108.6	99.9	99.1	110.6	126.6		87.4			95.6
October	118.2	123.5	119.2	109.2	102.7	98.7	110.6	125.4		88.1			95.5
November (P)	118.1	122.4	119.2	109.4	105.0	98.5	110.6	127.2		88.1			95.6
<b><u>Percentage Change (P)</u></b>													
Nov 2021 over Oct 2021	-0.1%	-0.9%	0.0%	0.2%	2.2%	-0.2%	0.0%	1.5%		0.0%			0.0%
Nov 2021 over Nov 2020	15.2%	18.0%	1.8%	17.2%	13.7%	0.3%	14.9%	22.5%		1.1%			-2.0%

Source : Samoa Bureau Statistics

(P) : Provisional figures

Note : n.a. Not applicable



**Table 5. IMPORTED ITEMS UNDERLYING INDEX**

**(Base Period : Average Prices February 2016 = 100)**

Group	All Items	Food and Non Alcoholic Beverages	Alcoholic Beverages, Tobacco and Narcotics	Clothing and Footwear	Housing, Water , Electricity, Gas and other Fuels	Furnishings, Household Equipment and Maintenance	Health	Transport	Communication	Recreation and Culture	Education	Restaurants	Miscellaneous goods and services
<b>Weights</b>	<b>401.2</b>	<b>269.1</b>	<b>n.a</b>	<b>15.2</b>	<b>24.2</b>	<b>26.9</b>	<b>2.5</b>	<b>23.0</b>	<b>n.a</b>	<b>5.6</b>	<b>n.a</b>	<b>n.a</b>	<b>34.7</b>
Ave - 2018	108.8	113.8		96.1	93.4	97.6	94.3	111.2		92.0			96.6
Ave - 2019	108.9	114.5		93.7	94.6	95.8	97.9	108.1		87.9			96.7
Ave - 2020	107.6	112.2		93.2	93.7	97.7	95.8	110.4		87.6			98.0
2020													
November	102.0	103.7		93.4	91.9	98.2	96.3	113.9		87.2			97.5
December	102.4	104.1		92.9	92.2	98.5	101.8	113.9		87.2			98.3
2021													
January	104.5	107.3		93.1	91.5	99.5	104.1	113.9		86.3			98.2
February	106.8	111.1		92.3	91.2	97.8	106.4	113.3		86.6			96.5
March	109.3	114.5		92.3	92.4	99.5	106.9	114.8		86.0			96.0
April	109.2	114.4		92.4	92.1	99.2	105.4	114.8		86.0			96.2
May	110.2	115.8		92.4	92.5	98.4	106.9	114.8		87.4			96.3
June	110.5	116.5		93.8	92.7	97.7	106.9	114.7		88.5			94.3
July	114.1	120.9		109.1	93.0	98.0	106.9	114.2		88.0			95.4
August	116.6	124.4		108.9	93.7	98.7	110.6	114.2		87.4			95.8
September	116.1	123.7		108.6	94.0	99.1	110.6	114.2		87.4			95.6
October	116.2	123.5		109.2	97.5	98.7	110.6	114.6		88.1			95.5
November (P)	115.6	122.4		109.4	99.2	98.5	110.6	114.5		88.1			95.6
<b><u>Percentage Change (P)</u></b>													
Nov 2021 over	-0.6%	-0.9%		0.2%	1.7%	-0.2%	0.0%	-0.1%		0.0%			0.0%
Oct 2021													
Nov 2021 over	13.3%	18.0%		17.2%	7.9%	0.3%	14.9%	0.6%		1.1%			-2.0%
Nov 2020													

Source : Samoa Bureau Statistics

(P) : Provisional figures

Note : n.a. Not applicable

**Table 6. LOCAL GOODS COMPONENT OF THE CONSUMER PRICE INDEX**  
(Base Period : Average Prices February 2016 = 100)

Group	All Items	Food and Non Alcoholic Beverages	Alcoholic Beverages, Tobacco and Narcotics	Clothing and Footwear	Housing, Water, Electricity, Gas and other Fuels	Furnishings, Household Equipment and Maintenance	Health	Transport	Communication	Recreation and Culture	Education	Restaurants	Miscellaneous goods and services
<b>Weights</b>	<b>505.3</b>	<b>134.6</b>	<b>104.6</b>	<b>6.0</b>	<b>91.3</b>	<b>3.9</b>	<b>2.2</b>	<b>59.9</b>	<b>51.5</b>	<b>0.4</b>	<b>19.7</b>	<b>22.4</b>	<b>8.8</b>
Ave - 2018	102.6	105.3	112.0	93.3	88.1	100.3	100.0	101.7	103.3	100.0	110.4	99.0	102.3
Ave - 2019	105.5	107.3	116.5	93.8	93.2	100.3	102.5	102.3	104.2	100.0	113.5	103.3	102.3
Ave - 2020	105.3	106.8	120.7	94.2	87.6	100.3	103.0	100.1	104.2	100.0	114.9	109.4	102.3
2020													
November	103.9	100.8	121.8	94.4	87.1	100.3	103.0	99.9	104.2	100.0	114.9	111.4	102.3
December	104.0	101.6	121.5	94.4	87.1	100.3	103.0	99.9	104.2	100.0	114.9	111.4	102.3
2021													
January	102.8	100.4	122.7	94.4	80.7	100.3	103.0	99.9	104.2	100.0	114.9	111.0	102.3
February	104.0	103.1	122.3	93.6	85.2	100.3	103.0	99.9	104.2	100.0	109.4	111.0	102.3
March	104.3	104.3	122.3	93.6	85.2	100.3	103.0	100.0	104.2	100.0	109.4	111.0	102.3
April	103.5	100.5	122.3	93.6	86.5	100.3	103.0	100.0	104.2	100.0	109.4	111.0	102.3
May	103.4	99.9	122.1	92.9	86.5	100.3	103.0	100.0	104.2	100.0	109.4	111.0	102.3
June	106.1	102.7	122.2	92.9	97.3	100.3	103.0	100.0	104.2	100.0	109.4	111.0	102.3
July	106.5	104.1	122.3	94.2	97.3	100.3	103.0	100.0	104.2	100.0	109.4	111.0	102.3
August	107.3	106.7	121.9	94.2	98.6	100.3	103.0	100.0	104.2	100.0	109.4	111.4	102.3
September	107.3	106.4	122.1	94.2	98.6	100.3	103.0	100.0	104.2	100.0	109.4	111.4	102.3
October	109.1	107.3	122.2	94.2	100.5	100.3	103.0	100.0	115.9	100.0	109.4	111.4	102.3
November (P)	108.1	115.7	122.1	94.2	83.9	100.3	103.0	98.2	115.9	100.0	109.4	111.7	102.3
<b><u>Percentage Change (P)</u></b>													
Nov 2021 over Oct 2021	-0.9%	7.9%	0.0%	0.0%	-16.5%	0.0%	0.0%	-1.7%	0.0%	0.0%	0.0%	0.3%	0.0%
Nov 2021 over Nov 2020	4.1%	14.8%	0.3%	-0.2%	-3.7%	0.0%	0.0%	-1.6%	11.2%	0.0%	-4.7%	0.2%	0.0%

Source : Samoa Bureau Statistics

(P) : Provisional figures

**Table 7. LOCAL ITEMS UNDERLYING INDEX**

(Base Period : Average Prices February 2016 = 100)

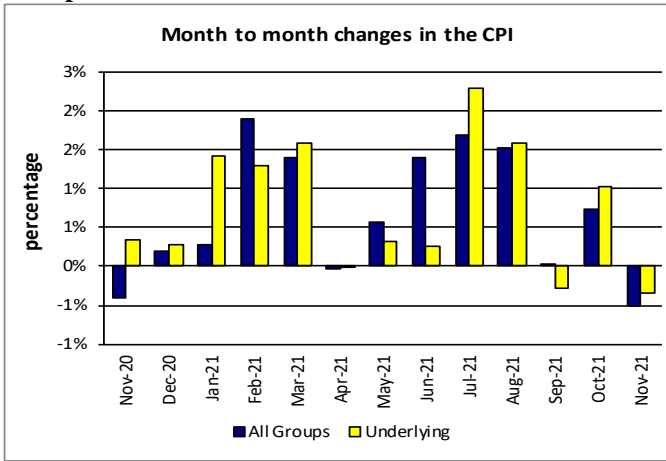
Group	All Items	Food and Non Alcoholic Beverages	Alcoholic Beverages, Tobacco and Narcotics	Clothing and Footwear	Housing, Water , Electricity, Gas and other Fuels	Furnishings, Household Equipment and Maintenance	Health	Transport	Communication	Recreation and Culture	Education	Restaurants	Miscellaneous goods and services
<b>Weights</b>	<b>185.5</b>	<b>76.1</b>	<b>n.a</b>	<b>6.0</b>	<b>n.a</b>	<b>3.9</b>	<b>1.0</b>	<b>3.4</b>	<b>51.5</b>	<b>n.a</b>	<b>12.3</b>	<b>22.4</b>	<b>8.8</b>
Ave - 2018	101.9	100.3		93.3		100.3	100.0	108.3	103.3		114.0	99.0	102.3
Ave - 2019	103.6	101.6		93.8		100.3	105.2	108.6	104.2		118.5	103.3	102.3
Ave - 2020	104.6	101.9		94.2		100.3	106.3	108.6	104.2		120.6	109.4	102.3
2020													
November	105.0	102.4		94.4		100.3	106.3	108.6	104.2		120.6	111.4	102.3
December	105.2	102.8		94.4		100.3	106.3	108.6	104.2		120.6	111.4	102.3
2021													
January	105.2	102.8		94.4		100.3	106.3	108.6	104.2		120.6	111.0	102.3
February	104.5	102.8		93.6		100.3	106.3	108.6	104.2		111.9	111.0	102.3
March	104.6	103.0		93.6		100.3	106.3	108.6	104.2		111.9	111.0	102.3
April	104.7	103.2		93.6		100.3	106.3	108.6	104.2		111.9	111.0	102.3
May	103.7	100.9		92.9		100.3	106.3	108.6	104.2		111.9	111.0	102.3
June	103.9	101.3		92.9		100.3	106.3	108.6	104.2		111.9	111.0	102.3
July	104.0	101.3		94.2		100.3	106.3	108.6	104.2		111.9	111.0	102.3
August	104.0	101.4		94.2		100.3	106.3	108.6	104.2		111.9	111.4	102.3
September	104.1	101.6		94.2		100.3	106.3	108.6	104.2		111.9	111.4	102.3
October	107.5	101.9		94.2		100.3	106.3	108.6	115.9		111.9	111.4	102.3
November (P)	107.7	102.3		94.2		100.3	106.3	108.6	115.9		111.9	111.7	102.3
<b><u>Percentage Change (P)</u></b>													
Nov 2021 over	0.2%	0.4%		0.0%		0.0%	0.0%	0.0%	0.0%		0.0%	0.3%	0.0%
Oct 2021													
Nov 2021 over	2.5%	0.0%		-0.2%		0.0%	0.0%	0.0%	11.2%		-7.2%	0.2%	0.0%
Nov 2020													

Source : Samoa Bureau Statistics

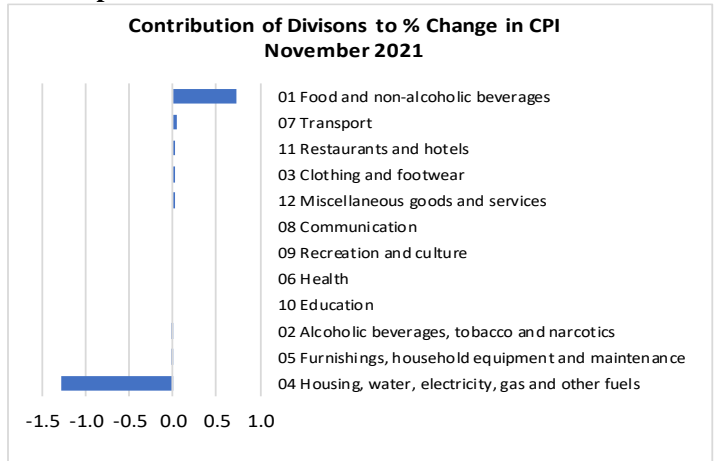
(P) : Provisional figures

Note : n.a. Not applicable

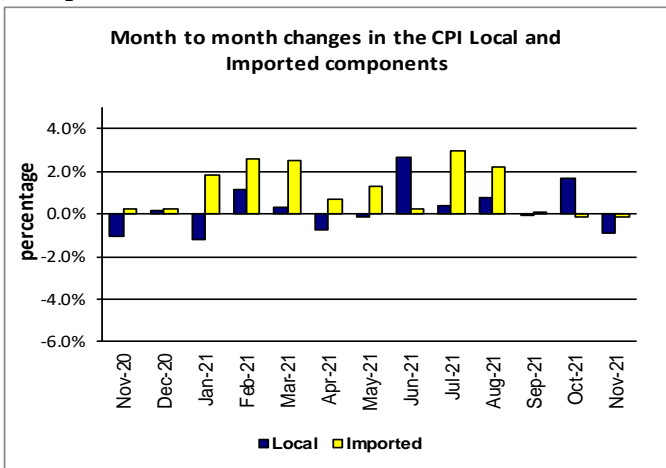
**Graph.5**



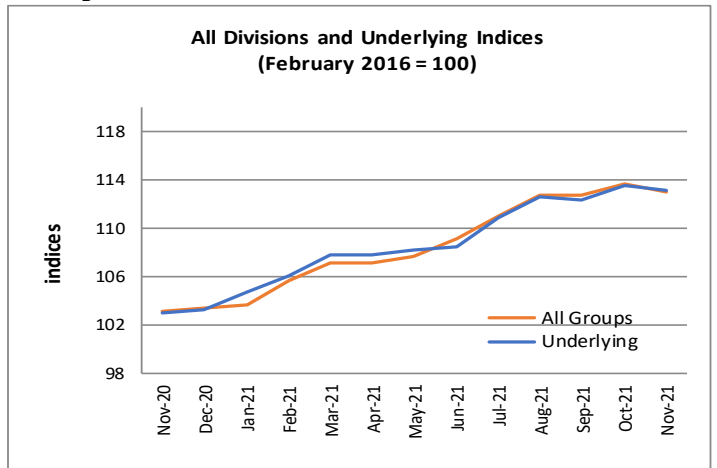
**Graph.6**



**Graph.7**



**Graph.8**



**Graph.9**

