

Please address all correspondence
To Government Statistician
In reply, please quote the file reference



GOVERNMENT OF SAMOA

File Ref: CPI 12/2022

SAMOA BUREAU OF STATISTICS

CONSUMER PRICE INDEX DECEMBER 2022

Key findings:

The Consumer Price Index for December 2022 increased by 7.5 percent compared to the same month last year.

- The Restaurants index increased 21.0 percent.
- The Communication index increased by 13.9 percent.
- The Food & Non Alcoholic Beverages index also increased by 9.2 percent.

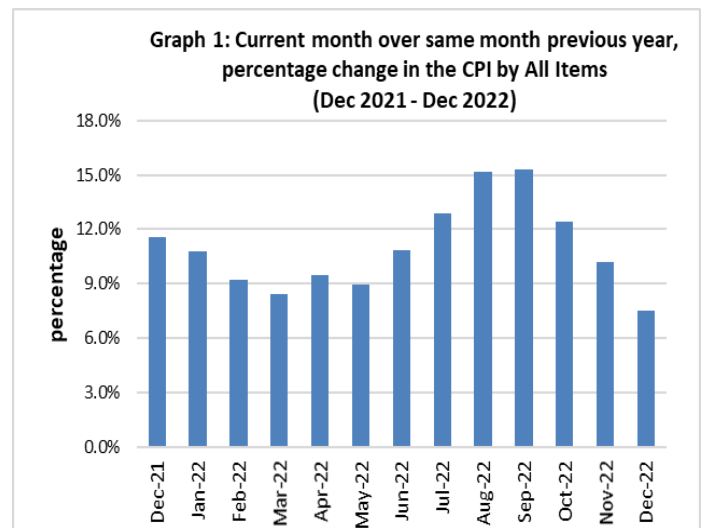
The Average Annual Inflation for the year ended December 2022 was 11.0 percent.

The CPI fell 0.4 percent from November 2022.

SUMMARY

The Consumer Price Index for December 2022 rose 7.5 percent compared to December 2021 but fell 0.4 percent in comparison to the previous month. This was mainly influenced by the increase in the Local goods component by 8.6 percent from the same month last year as a result of higher prices for local food items, meals, phone calls, internet and airline fares.

The Imported goods component also contributed to the increase when it went up by 6.6 percent on a year-on-year (y-o-y) basis due to higher prices for imported food, fuel, building material, cooking gas, toiletries, washing soap and mosquito repellent products. Graph 1 shows the percentage changes over the same month last year in the Consumer Price Index by all Divisions from December 2021 to December 2022.

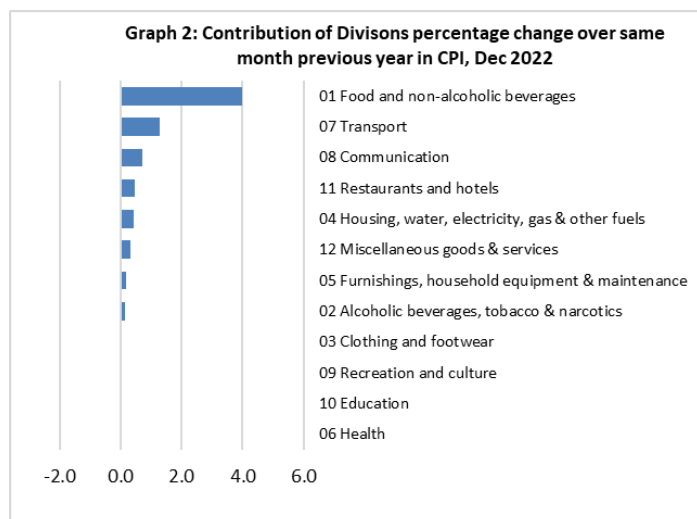


Source : Samoa Bureau of Statistics

Total All Divisions Contribution

As depicted in Graph 2, Food & Non Alcoholic Beverages was the largest contributor to the 7.5 percent rise in the CPI in December 2022, with a contribution of 4.0 percentage-points (pp) to the overall increase in December 2022. The most significant drivers of this within the group were fresh fish (up 32.3%), cooking oil (up 62.9%), flour (up 46.3%), corned beef (31.2%), pancake (up 33.3%), potatoes (up 48.0%), cucumber (up 35.7%), coconut (up 37.3%), taamu (up 59.8%) and head cabbage (up 49.3%).

The next largest contributor was Transport with a contribution of 1.3 percentage-points, increasing 8.2% compared to December 2021. The greatest drivers of this increase were petrol (up 6.0%), airline fares (up 41.6%) and diesel (up 37.3%). Communication also contributed 0.7 percentage-points due to the increase in mobile phone calling per minute (up 19.5%) and internet (up 15.8%).

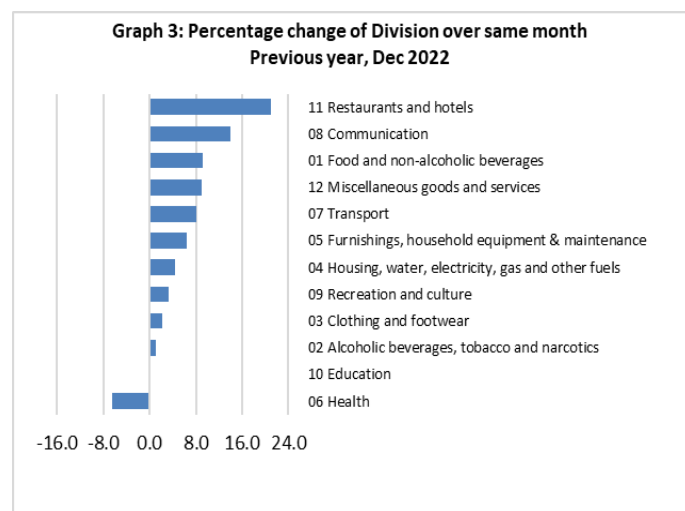


Source : Samoa Bureau of Statistics

Consumer Price Index (% Change)

Graph 3 shows the percentage changes for all Divisions (groups) in December 2022 in comparison to December 2021. Restaurant had the largest increase of 21.0 percent followed by Communication, Food & Non-alcoholic beverages and Miscellaneous Goods & Services which rose 13.9, 9.2 and 9.0 percent respectively. Other groups such as Transport, Furnishing & Household Equipment & Maintenance, Housing, Water, Electricity Gas & Other Fuel, Recreation & Culture, Clothing & Footwear and Alcoholic Beverages & Tobacco indices recorded increases of 8.2, 6.4, 4.4, 3.2, 2.2 and 1.1 percent respectively.

On the other hand, the Health index fell by 6.5 percent. No changes were recorded for the Education index.



Source : Samoa Bureau of Statistics

Local Goods Component

The Local goods component of the Consumer Price Index registered an increase of 8.6 percent when compared to the same month last year. This increase was mainly due to higher prices recorded for meals, fresh fish, cucumber, coconut, taamu, head cabbage, pancake, airline fares, mobile phone calling per minute and internet have resulted in the 8.6 percent increase in the local goods component.

Imported Goods Component

The increase in prices for imported food, kerosene, building material, cooking gas, fuel (petrol and diesel), toiletries, washing powder, washing soap and mosquito repellent products have resulted in the 6.6 percent increase in the imported goods component.

Restaurants Index

An increase of 21.0 percent in the Restaurants index reflects higher prices recorded for meals.

Communication Index

Increased prices recorded for mobile phone calling per minute (up 19.5%) and internet data bundle (up 15.8%) led to the 13.9 percent increase in the Communication index.

Food and Non-Alcoholic Beverages Index

The increase of 9.2 percent in the Food & Non-Alcoholic Beverages index was influenced by higher prices recorded for fresh fish (piece 22.8%, string 34.5% and large 39.5%), cooking oil (up 62.9%), Chinese cabbage (up 28.3%), flour (up 46.3%), bowl noodle (up 30.7%), corned beef (up 31.2%), round pancake (up 33.3%), potatoes (up 48.0%), mineral water (up 28.1%), cucumber (up 35.7%), instant coffee (up 28.7%), vermicelli (up 29.4%), tomatoes (up 30.2%), coconut (up 37.3%), taamu (up 59.8%) and head cabbage (up 49.3%).

Miscellaneous Goods and Services Index

An increase of 9.0 percent in the Miscellaneous Goods & Services index reflected higher prices recorded for toilet paper, hair gel, toilet soap and toothpaste.

Transport Index

The increases in petrol of 6.0%, airline fares (Apia-Pago-Apia) of 71.1%, Apia-Auckland-Apia fares of 12.1%, diesel of 37.3% and prices of used minivan vehicle of 12.2%, are reflected in the 8.2 percent increase in the Transport index. However, it declined 2.8 percent compared to the previous month.

Furnishings, Household Equipment & Maintenance Index

The Furnishings, Household Equipment & Maintenance index rose 6.4 percent due to the increase in washing powder, washing soap, mosquito coil, clothing chest and glass buffet sideboard (sefe).

Housing, Water, Electricity, Gas and other Fuels Index

The 4.4 percent increase in the Housing, Water, Electricity, Gas and other Fuels index was mainly influenced by the increases in prices for kerosene, cement, timber and cooking gas.

Recreation and Culture Index

Increased prices recorded for laptop and weedkiller are reflected in the 3.2 percent increase in the Recreation and Culture index.

Clothing and Footwear Index

The 2.2 percent increase in the Clothing and Footwear index was a result of higher prices recorded for school uniform, ie faitaga, aloha shirt and long sleeves shirt.

Alcoholic Beverages and Tobacco Index

The Alcoholic Beverages and Tobacco index went up 1.1 percent due to the increase in prices for beer.

Health Index

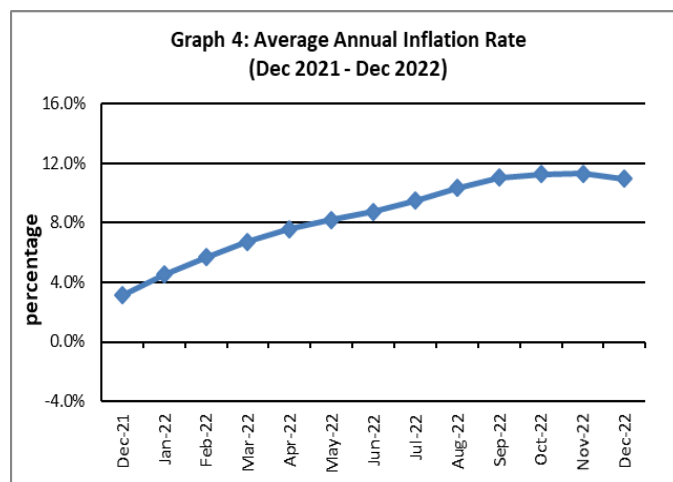
The 6.5 percent decrease in the Health index was influenced by lower prices recorded for medicine (amoxicillin tablets).

Underlying Indices ^{1/}

The All Items Underlying Index for December 2022 registered an increase of 7.8 percent when compared to December 2021 but decreased by 1.3 percent when compared to November 2022. Both the Local and Imported Items Underlying Indices recorded increases of 11.6 and 6.2 percent respectively.

Inflation Rate

The average annual inflation rate for the year ended December 2022 was 11.0 percent. For the twelve months ending December 2021, the inflation rate was 3.1 percent. Presented in Graph 4 is the Average annual inflation rate (Dec 2021 – Dec 2022).



Source : Samoa Bureau of Statistics

The attached Tables and Graphs provide the users with more detailed analysis.

Technical Notes:

The Consumer Price (CPI) measures the rate of inflation for Samoa. It is designed to measure the change in prices for the goods purchased by households in Samoa. The CPI measures the change in prices by comparing the prices for a basket of goods and services at the collection period with the price for the same goods in a base period.

The basket of goods that is priced is based on the average expenditures of households as recorded in the Household Income and Expenditure Survey (HIES). The HIES survey identifies how much households spend on different items. The more households spend on an item on average, the more important it is to the price index, and the higher the weight in the index.

^{1/} Monthly movements in the 'headline' CPI series can be volatile. This volatility reflects price changes in particular items that may be due, among other factors, to fluctuations in commodity markets and agricultural conditions, policy changes, or seasonal or infrequent price resetting.

Underlying inflation is a measure of inflation that excludes certain items that face volatile price movements. Underlying inflation eliminates products that can have temporary price shocks because these shocks can diverge from the overall trend of inflation and give a false measure of inflation.



Date of release: 19th January 2023

The next Consumer Price Index will be released on 20th February 2023.

Leota Aliielua Salani
GOVERNMENT STATISTICIAN/(CEO)

Table 1. CONSUMER PRICE INDEX.

(Base Period : Average Prices February 2016 = 100)

Group	All Items	Food and Non Alcoholic Beverages	Alcoholic Beverages, Tobacco and Narcotics	Clothing and Footwear	Housing, Water, Electricity, Gas and other Fuels	Furnishings, Household Equipment, and Maintenance	Health	Transport	Communication	Recreation and Culture	Education	Restaurants	Miscellaneous goods and services
<i>Weights</i>	1000.0	403.7	128.4	21.2	119.6	30.8	4.6	148.5	51.5	6.1	19.7	22.4	43.5
<i>Ave - 2020</i>	106.6	110.4	120.0	93.5	89.6	98.1	99.2	104.4	104.2	88.5	114.9	109.4	98.8
<i>Ave - 2021</i>	109.9	114.1	121.6	98.9	92.4	98.9	105.7	111.7	107.1	88.2	109.9	111.2	97.2
<i>Ave - 2022</i>	122.0	131.8	122.8	108.3	93.1	105.0	101.9	131.0	124.5	91.0	109.4	126.2	102.1
<i>2021</i>													
<i>December 2022</i>	115.3	123.1	121.7	105.1	90.5	99.7	107.0	121.3	115.9	89.0	109.4	111.7	97.1
<i>January</i>	114.8	122.3	121.7	106.4	90.2	100.7	107.0	119.0	115.8	89.0	109.4	118.3	97.2
<i>February</i>	115.3	123.8	122.1	108.6	90.3	102.0	109.9	117.0	115.8	89.0	109.4	118.3	97.6
<i>March</i>	116.2	124.0	122.6	108.9	90.6	103.2	101.5	120.8	115.8	91.8	109.4	118.3	99.1
<i>April</i>	117.2	124.5	122.4	108.8	92.3	102.5	99.9	125.2	115.8	91.8	109.4	118.3	99.8
<i>May</i>	117.3	124.5	122.6	109.4	92.4	102.5	95.1	125.4	115.8	91.8	109.4	118.3	101.4
<i>June</i>	121.0	129.0	122.6	109.3	93.6	106.3	95.1	134.8	115.8	91.8	109.4	128.3	101.2
<i>July</i>	125.3	135.9	123.0	108.4	93.6	106.8	104.1	137.9	133.7	90.6	109.4	128.5	102.5
<i>August</i>	129.9	141.4	123.4	108.7	96.0	108.1	108.8	149.9	133.7	92.3	109.4	129.2	104.7
<i>September</i>	130.1	145.5	123.4	108.0	94.8	107.5	102.0	140.9	133.7	92.0	109.4	133.8	104.7
<i>October</i>	127.7	141.9	123.4	108.5	94.5	108.0	98.9	135.3	133.7	88.6	109.4	133.2	105.1
<i>November</i>	124.6	134.3	123.4	106.9	94.6	106.6	100.0	134.9	132.0	91.8	109.4	135.1	106.0
<i>December (P)</i>	124.0	134.5	123.0	107.4	94.5	106.0	100.0	131.2	132.0	91.9	109.4	135.1	105.8
<u>Percentage Change (P)</u>													
<i>Dec 2022</i>													
<i>over</i>	7.5%	9.2%	1.1%	2.2%	4.4%	6.4%	-6.5%	8.2%	13.9%	3.3%	0.0%	21.0%	9.0%
<i>Dec 2021</i>													
<i>Dec 2022</i>													
<i>over</i>	-0.4%	0.1%	-0.3%	0.5%	-0.1%	-0.5%	0.0%	-2.8%	0.0%	0.1%	0.0%	0.0%	-0.2%
<i>Nov 2022</i>													

Source : Samoa Bureau Statistics

(P) : Provisional figures

Table 2. ALL ITEMS UNDERLYING INDEX

(Base Period : Average Prices February 2016 = 100)

Group	All Items	Food and Non Alcoholic Beverages	Alcoholic Beverages, Tobacco and Narcotics	Clothing and Footwear	Housing, Water , Electricity, Gas and other Fuels	Furnishings, Household Equipment, and Maintenance	Health	Transport	Communication	Recreation and Culture	Education	Restaurants	Miscellaneous goods and services
Weights	586.7	345.3	n.a	21.2	24.2	30.8	3.5	26.4	51.5	5.6	12.3	22.4	43.5
Ave - 2020	106.6	109.9		93.5	93.7	98.1	98.9	110.1	104.2	87.6	120.6	109.4	98.8
Ave - 2021	110.1	114.8		98.9	94.5	98.9	107.5	113.6	107.1	87.3	112.7	111.2	97.2
Ave - 2022	122.9	130.1		108.3	110.2	105.0	102.5	115.5	124.5	90.4	111.9	126.2	102.1
2021													
December 2022	115.4	121.4		105.1	104.7	99.7	109.3	113.8	115.9	88.1	111.9	111.7	97.1
January	115.4	120.9		106.4	104.5	100.7	109.3	114.4	115.8	88.1	111.9	118.3	97.2
February	116.6	122.4		108.6	105.4	102.0	113.2	114.5	115.8	88.1	111.9	118.3	97.6
March	116.6	122.1		108.9	105.1	103.2	102.0	114.5	115.8	91.2	111.9	118.3	99.1
April	117.4	123.1		108.8	111.5	102.5	99.9	114.5	115.8	91.2	111.9	118.3	99.8
May	117.3	122.8		109.4	111.8	102.5	93.5	114.5	115.8	91.2	111.9	118.3	101.4
June	120.5	127.2		109.3	111.5	106.3	93.5	114.5	115.8	91.2	111.9	128.3	101.2
July	126.7	134.9		108.4	111.2	106.8	105.4	114.5	133.7	89.9	111.9	128.5	102.5
August	129.6	139.1		108.7	111.9	108.1	111.7	115.8	133.7	91.7	111.9	129.2	104.7
September	132.7	144.1		108.0	112.6	107.5	102.6	117.1	133.7	91.4	111.9	133.8	104.7
October	131.1	141.3		108.5	112.2	108.0	98.5	117.2	133.7	87.8	111.9	133.2	105.1
November	126.0	132.9		106.9	112.9	106.6	100.1	117.4	132.0	91.2	111.9	135.1	106.0
December (P)	124.4	130.1		107.4	112.4	106.0	100.1	117.4	132.0	91.3	111.9	135.1	105.8
<u>Percentage Change (P)</u>													
Dec 2022 over Dec 2021	7.8%	7.2%		2.2%	7.3%	6.4%	-8.5%	3.2%	13.9%	3.6%	0.0%	21.0%	9.0%
Dec 2022 over Nov 2022	-1.3%	-2.1%		0.5%	-0.5%	-0.5%	0.0%	0.0%	0.0%	0.1%	0.0%	0.0%	-0.2%

Source : Samoa Bureau Statistics

(P) : Provisional figures

Note : n.a. Not applicable

Table 3. AVERAGE RETAIL PRICES OF SELECTED COMMODITIES

Commodities	Wt	Unit	2021			2022			Dec-22	
			Oct	Nov	Dec	Oct	Nov	Dec	% chng from prev mnth	%chng from Dec 21
01 Food and non-alcoholic beverages										
Chicken leg quarters	62.19	kg	4.98	4.83	5.08	6.61	5.16	4.57	-11.5%	-10.1%
Raw Sugar	21.27	kg	2.92	2.91	2.92	3.48	3.68	3.42	-7.3%	17.1%
Bread	17.20	loaf	1.64	1.64	1.64	1.82	1.82	1.86	2.1%	13.6%
Corned Beef Oxford (a)	15.88	340 grms	8.55	8.55	8.55	9.52	10.13	10.13	0.0%	18.5%
Taro	15.17	kg	2.55	3.71	3.68	3.81	3.57	3.78	5.7%	2.6%
Re-packed medium grain rice	13.38	kg	2.67	2.79	3.06	3.43	3.60	3.55	-1.3%	16.2%
Prepacked medium grain rice (a)	13.38	907 grms	2.80	2.80	2.77	2.87	2.87	2.87	0.0%	3.6%
Bongo	10.18	20 grms	0.83	0.83	0.83	0.87	0.92	0.87	-5.4%	4.8%
Keke Saina Biscuits (a)	9.21	pkt 10	6.14	6.13	6.21	6.63	7.18	7.04	-2.0%	13.4%
Ice Cream (a)	9.17	2 ltr	15.52	15.60	15.77	17.60	18.90	18.98	0.4%	20.4%
Ramen	9.00	85 grms	1.11	1.11	1.14	1.31	1.37	1.39	1.6%	21.4%
Fish (Piece)	7.92	kg	23.92	25.82	25.00	25.58	22.48	30.70	36.5%	22.8%
Butter	7.66	454 grms	16.23	16.11	16.36	18.47	18.79	18.76	-0.2%	14.7%
Round Pancake (a)	7.50	sml	0.15	0.15	0.15	0.20	0.20	0.20	0.0%	33.3%
Mutton Flaps	6.63	kg	27.75	25.04	25.61	25.55	26.30	25.63	-2.6%	0.1%
Canned fish betw een \$3.00 and \$3.99 N/Oil	6.37	425 grms	3.12	3.14	3.18	3.34	3.32	3.33	0.3%	4.9%
Canned fish \$4:00 or over N/Oil	6.37	425 grms	4.69	4.69	4.89	4.94	4.89	4.97	1.6%	1.6%
Canned fish betw een \$3.00 and \$3.99 N/Oil	6.37	425grms	3.35	3.24	3.14	3.21	3.19	3.24	1.6%	3.2%
Canned fish under \$3.00 in N/Oil	6.37	425 grms	2.70	2.73	2.78	2.63	2.75	2.73	-0.6%	-1.8%
Turkey Wings	6.31	kg	10.29	11.34	13.03	13.63	14.63	15.43	5.5%	18.4%
Fish (string)	5.98	kg	11.37	11.63	12.05	13.44	13.24	16.21	22.5%	34.5%
Fish (large)	5.98	kg	17.99	18.81	20.28	23.95	21.56	28.29	31.2%	39.5%
Cooking vegetable oil (a)	5.89	ltr	5.31	5.78	6.20	10.84	10.12	10.10	-0.2%	62.9%
Sausage beef	5.76	kg	14.41	14.33	14.43	15.40	15.28	15.50	1.4%	7.4%
Chinese Cabbage	5.53	kg	5.23	6.07	6.12	5.87	8.46	7.85	-7.2%	28.3%
Eggs medium size	5.45	doz	7.41	7.55	7.72	7.48	7.65	7.87	2.9%	1.9%
Flour plain w hite	5.29	kg	2.31	2.27	2.27	3.30	3.28	3.32	1.2%	46.3%
Onions	5.23	kg	3.23	2.95	3.69	4.06	4.12	4.33	5.0%	17.3%
Milk Devondale	5.11	ltr	3.77	3.80	3.90	4.32	4.40	4.43	0.7%	13.6%
Soft Drink Coke	5.07	600 mls	3.03	3.03	2.98	3.10	3.11	3.11	0.2%	4.5%
Soft Drink Taxi	5.07	330 mls	1.82	1.82	1.82	1.92	1.92	1.92	0.0%	5.5%
Milk Anchor	4.81	ltr	3.85	3.88	3.93	4.28	4.34	4.36	0.5%	10.9%
Salted Beef	4.72	kg	20.41	21.35	21.15	22.20	22.83	23.61	3.5%	11.6%
Canned fish Soifua in Tomato Sauce	4.47	425 grms	2.53	2.45	2.59	2.54	2.54	2.54	0.0%	-1.9%
CCK Coffee	4.47	100 grms	3.94	3.94	3.94	3.94	3.94	3.94	0.0%	0.0%
Sky Flakes Biscuits	4.29	850 grms	16.89	16.89	16.89	19.36	19.63	19.63	0.0%	16.2%
Stew ing beef	4.20	kg	16.05	16.05	16.05	17.51	17.01	17.11	0.6%	6.6%
Koko Samoa	4.09	cup	16.12	16.96	17.61	18.78	18.48	17.61	-4.7%	0.0%
Corned Beef Pacific	3.64	340 grms	15.74	15.74	15.74	17.40	17.74	18.61	4.9%	18.2%
Ramen kimchi (bow l)	3.40	86 grms	2.73	2.75	2.74	3.51	3.53	3.58	1.4%	30.7%
Soy Sauce Mushroom	3.25	750 grms	3.10	3.09	3.13	3.42	3.60	3.68	2.1%	17.6%
Pork Pig Trotter	3.10	kg	7.96	8.04	8.23	8.06	8.27	8.25	-0.2%	0.3%
Corned Beef Palm	3.01	340 grms	14.01	14.16	14.16	17.72	17.63	18.58	5.4%	31.2%
Ripe Banana (a)	2.71	kg	3.29	4.01	3.46	4.14	4.24	4.13	-2.6%	19.2%
Tang pow der (a)	2.51	25 grms	0.66	0.66	0.66	0.65	0.60	0.60	0.0%	-9.6%
Minties Pascall (a)	2.49	200 grms	12.90	12.90	12.90	12.50	12.50	12.50	0.0%	-3.1%

Potatoes	2.41	kg	3.86	3.85	4.05	4.55	5.08	6.00	18.0%	48.0%
Green Banana	2.29	kg	1.22	1.37	1.27	1.77	1.57	1.44	-8.4%	13.6%
Apple small	2.26	each	1.40	1.42	1.45	1.46	1.39	1.58	14.0%	9.0%
Mineral Water	2.25	bottle	1.48	1.48	1.48	1.87	1.87	1.89	1.4%	28.1%
Chocolate Cake (a)	2.15	sml	21.50	21.50	21.50	21.50	21.50	22.40	4.2%	4.2%
Cucumbers	2.12	kg	4.64	4.71	4.18	5.20	5.73	5.68	-0.9%	35.7%
Instant Nescafe Coffee	2.02	50 grms	6.82	6.82	6.82	8.12	8.78	8.78	0.0%	28.7%
Mutton Neck	1.93	kg	24.51	25.11	25.18	27.37	26.69	27.13	1.6%	7.7%
Vermicelli Lungken	1.88	454 grms	3.46	3.46	3.66	4.68	4.72	4.74	0.3%	29.4%
Tomatoes	1.80	kg	11.37	10.78	12.20	11.58	14.04	15.26	8.7%	25.1%
Sausage Pork	1.68	kg	14.18	14.15	14.12	14.91	15.16	15.23	0.5%	7.9%
Bell Tea Bags	1.62	150 grms	11.18	11.24	11.24	11.45	11.45	11.38	-0.7%	1.2%
Samco Tw isties	1.40	20 grms	0.70	0.70	0.70	0.74	0.79	0.79	0.0%	12.2%
Matured husked Coconuts	1.30	kg	0.97	1.01	0.96	1.17	1.23	1.36	10.9%	41.5%
Matured Un husked Coconuts (a)	1.30	kg	0.66	0.62	0.67	0.79	0.73	0.89	21.4%	33.1%
Taamu	1.13	kg	3.87	5.45	7.50	11.27	7.80	11.99	53.6%	59.8%
Round Cabbage Round	1.12	kg	6.05	6.83	6.44	7.10	8.43	9.62	14.1%	49.3%

02 Alcoholic beverages, tobacco and narcotics

Beer Vailima Lager	37.94	355 mls	3.65	3.65	3.65	3.80	3.80	3.80	0.0%	4.2%
Pall Mall Filter Cigarettes (Red)	24.29	20 rolls	14.60	14.60	14.60	14.60	14.60	14.60	0.0%	0.0%
Pall Mall Menthol Cigarettes (Green)	24.29	20 rolls	14.60	14.60	14.60	14.60	14.60	14.60	0.0%	0.0%
Beer Taula (a)	16.26	330 mls	3.55	3.55	3.56	3.66	3.68	3.68	0.0%	3.2%
Tobacco w infield (a)	12.64	30 grms	15.00	15.00	15.00	15.00	15.00	15.00	0.0%	0.0%
Vodka Niu Spirit (a)	3.76	Niu / 2ltr	66.82	66.82	66.82	66.82	66.82	66.82	0.0%	0.0%
Whisky Jim Bean Spirit (a)	3.76	1ltr	92.75	92.75	92.13	91.88	91.88	92.50	0.7%	0.4%
Paper Cigarettes	3.61	50 sheets	1.70	1.70	1.71	1.70	1.70	1.70	0.0%	-0.5%
Samoan kava	1.82	pkt	43.33	41.33	46.67	42.46	42.50	22.27	-47.6%	-52.3%

03 Clothing and footwear

Uniform le Faitaga College boys	4.28	size 8-10	37.00	37.00	37.00	38.33	38.33	38.33	0.0%	3.6%
Uniform Pa'ave (a)	3.71	size 7	37.33	37.33	37.33	42.67	42.67	42.67	0.0%	14.3%
Jandals soft	2.48	10.5 size	9.25	9.25	9.25	9.50	9.10	9.17	0.7%	-0.9%
Puletasi mamanu palama (a)	2.35	medium	150.00	150.00	150.00	125.00	125.00	125.00	0.0%	-16.7%
le solosolo cotton print	2.22	42 inch	11.77	11.93	11.93	12.10	11.75	11.92	1.4%	-0.1%
Cargo shorts (a)	1.76	38 size	92.25	92.25	92.25	93.00	93.00	93.00	0.0%	0.8%
Shirt short sleeves men Aloha shirt (a)	1.15	men / XL	55.23	55.23	55.23	56.85	56.85	58.10	2.2%	5.2%
Shirt long sleeves men	1.15	16.5 size	37.24	37.24	37.24	37.75	37.75	38.38	1.7%	3.1%
Shoes Nike Running shoes (a)	0.82	size 9	258.50	258.50	258.50	258.50	224.75	224.75	0.0%	-13.1%
le Faitaga	0.70	36/38 size	33.80	33.80	33.80	38.05	38.05	38.05	0.0%	12.6%
Woman Nylon Panties	0.59	medium	4.80	4.80	4.72	5.00	5.00	4.42	-11.7%	-6.4%

04 Housing, water, electricity, gas and other fuels

Electricity Cashpower er	50.59	kwh	0.72	0.58	0.58	0.58	0.58	0.58	0.0%	0.0%
Reservoir treated Water	28.55	15-40 m3	1.67	1.34	1.34	1.34	1.34	1.34	0.0%	0.0%
Liquid gas	15.77	9kg	62.50	62.50	66.00	71.80	71.80	71.80	0.0%	8.8%
Government house Rent	12.16	2 b/room	650.00	650.00	650.00	680.00	680.00	680.00	0.0%	4.6%
Kerosene	4.12	1ltr	2.29	2.39	2.66	3.58	3.58	3.57	-0.4%	34.2%
Paint High gloss w hite	3.45	4 ltrs	76.08	77.42	83.92	84.42	83.75	80.08	-4.4%	-4.6%
Paint Plus 2 plastic w hite	3.45	4 ltrs	44.60	48.80	48.80	47.20	49.80	49.80	0.0%	2.0%
Cement NZ or Australia	0.78	40 kg	25.67	27.46	33.19	45.17	45.77	46.24	1.0%	39.3%
Dressed per Timber 2x4	0.71	meter	9.99	9.72	10.28	10.75	11.01	10.97	-0.3%	6.7%

05 Furnishings, household equipment and routine household maintenance

Washing powder (a)	6.27	200 grms	1.87	1.87	1.88	2.02	2.01	2.08	3.3%	10.7%
Washing Soap yellow	5.90	bar	2.81	2.76	2.85	3.42	3.42	3.22	-5.9%	12.7%
Mosquito coil	4.36	10 coil	1.28	1.28	1.30	1.58	1.55	1.55	0.0%	19.2%
Mattress single Futon (a)	3.81	4 inch	155.67	157.33	157.33	159.83	146.50	146.50	0.0%	-6.9%
Babysitting live-in (a)	3.78	1week	142.50	142.50	142.50	142.50	142.50	142.50	0.0%	0.0%
Refridgerator common brand	2.49	331-335 ltr	2321.32	2321.32	2301.32	2402.52	2362.52	2362.52	0.0%	2.7%
Gold Power washing powder	1.68	180 grms	1.67	1.67	1.67	1.67	1.67	1.67	0.0%	0.0%
Eveready AA size Batteries	1.20	AA 14 size	3.96	3.96	4.10	3.70	3.70	3.70	0.0%	-9.8%
Bush knife tramontina	0.88	24 inch	28.61	28.86	28.74	29.86	29.86	30.86	3.3%	7.4%
Kerosene stove	0.16	2 burner	112.50	112.50	112.50	112.50	112.50	112.50	0.0%	0.0%
Tumblers Glass basic no design (a)	0.11	medium	17.46	17.46	17.46	16.66	16.66	16.66	0.0%	-4.6%
Seife 3 shelves	0.11	48*48 inch	620.00	620.00	620.00	720.00	740.00	740.00	0.0%	19.4%
Clothing chest flat top	0.01	medium	500.00	500.00	500.00	620.00	607.50	607.50	0.0%	21.5%

06 Health

Amoxicillin 500mg tablets (a)	2.46	20 tablets	8.50	8.50	8.50	7.73	7.90	7.90	0.0%	-7.1%
Hospital Charge	1.15	per night	22.50	22.50	22.50	22.50	22.50	22.50	0.0%	0.0%
Private Doctor Consultation fee	1.04	per adult	30.00	30.00	30.00	30.00	30.00	30.00	0.0%	0.0%

07 Transport

Petrol	60.80	1ltr	2.81	2.86	3.15	3.51	3.51	3.34	-5.0%	6.0%
Taxi Fare P.O to Motootua Hosp	8.15	per trip	4.80	4.80	4.80	4.80	4.80	4.80	0.0%	0.0%
Taxi Fares P.O to Malua	8.15	per trip	31.30	31.30	31.30	31.30	31.30	31.30	0.0%	0.0%
Taxi Fares P.O to Falefa	8.15	per trip	43.20	43.20	43.20	43.20	43.20	43.20	0.0%	0.0%
Air Fares Faleolo-Pago-Faleolo	6.84	return trip	395.00	395.00	395.00	676.02	676.02	676.02	0.0%	71.1%
Air Fares Apia Auckland Apia	6.77	1month	1257.87	1257.87	1257.87	1816.67	1661.54	1410.34	-15.1%	12.1%
Car Registration (private car)	5.67	1501-2000 cc	320.00	256.00	256.00	256.00	256.00	256.00	0.0%	0.0%
Used Car Toyota Corolla (a)	5.08	1500 cc	23500.00	23500.00	23500.00	23500.00	23500.00	23500.00	0.0%	0.0%
Used Car Toyota Camry (a)	5.08	1500 cc	18000.00	18000.00	18000.00	18000.00	18000.00	18000.00	0.0%	0.0%
Diesel	4.83	1ltr	2.64	2.74	3.03	3.99	3.99	4.16	4.3%	37.3%
Bus Fares Apia Motootua Hosp	3.49	one adult	1.30	1.30	1.30	1.30	1.30	1.30	0.0%	0.0%
Bus Fares Apia Malua	3.49	one adult	2.60	2.60	2.60	2.60	2.60	2.60	0.0%	0.0%
Bus Fares Apia Falefa	3.49	one adult	3.70	3.70	3.70	3.70	3.70	3.70	0.0%	0.0%
Labour charge car repair	3.38	min charge	63.33	63.33	63.33	67.00	67.00	67.00	0.0%	5.8%
New Pickup Ford Ranger Double cab (a)	3.25	3200 cc	94000.00	94000.00	94000.00	94000.00	94000.00	94000.00	0.0%	0.0%
New Pickup Toyota Hilux Double cab (a)	3.25	3200 cc	105000.00	105000.00	105000.00	105000.00	105000.00	105000.00	0.0%	0.0%
Used Mini van Toyota Noah (a)	2.42	2000 cc	19600.00	19600.00	19600.00	22100.00	22000.00	22000.00	0.0%	12.2%
Used Mini van Toyota Voxy (a)	2.42	2000 cc	19600.00	19600.00	19600.00	22100.00	22000.00	22000.00	0.0%	12.2%
Car Tyre	1.49	195/70 R(14)	206.25	203.75	203.75	187.50	197.50	197.50	0.0%	-3.1%
Boat Fares Mulifanua Salelologa	1.14	one way	12.00	12.00	10.00	10.00	10.00	10.00	0.0%	0.0%
Boat Fares Apia Pago Apia	1.14	min charge	120.00	120.00	120.00	120.00	120.00	120.00	0.0%	0.0%

08 Communication

Calling per minute Rate cell phone (a)	10.02	per minute	0.43	0.43	0.43	0.59	0.55	0.55	0.0%	27.9%
Internet data bundles per mb Rate (a)	10.02	per mb	0.25	0.25	0.25	0.33	0.33	0.33	0.0%	32.0%
Calling per minute Rate cell phone (a)	10.02	per minute	0.44	0.44	0.44	0.49	0.49	0.49	0.0%	11.4%
Internet data bundles per mb Rate (a)	10.02	per mb	0.32	0.32	0.32	0.33	0.33	0.33	0.0%	3.1%
Telephone Rental	3.87	1month	24.15	24.15	24.15	24.15	24.15	24.15	0.0%	0.0%
Prepaid Internet	3.06	30 mins	5.80	5.80	5.80	5.80	5.80	5.80	0.0%	0.0%
Telephone call NZ	1.50	3 mins	2.37	2.37	2.37	2.37	2.37	2.37	0.0%	0.0%
Telephone call USA	1.50	3 mins	2.97	2.97	2.97	2.97	2.97	2.97	0.0%	0.0%
Telephone call local	1.50	1min	0.10	0.10	0.10	0.10	0.10	0.10	0.0%	0.0%

09 Recreation and culture

Television LCD 32" (a)	2.30	LCD 32"	852.83	852.83	852.83	869.50	839.33	841.00	0.2%	-1.4%
Exercise Book w arw ick	1.44	1B4	1.48	1.48	1.48	1.40	1.40	1.40	0.0%	-5.6%
Laptop (a)	1.33	each	2898.60	2898.60	2898.60	2898.60	3516.80	3516.80	0.0%	21.3%
Weedkiller Graxomone/Agriquat (a)	0.56	1ltr	46.67	46.67	46.67	51.67	51.67	51.67	0.0%	10.7%
Cinema Admission	0.41	ticket	15.00	15.00	15.00	15.00	15.00	15.00	0.0%	0.0%
New s Paper Samoa Observer	0.01	each	2.50	2.50	2.50	2.50	2.50	2.50	0.0%	0.0%
New s Paper New sline	0.01	each	2.50	2.50	2.50	2.50	2.50	2.50	0.0%	0.0%

10 Education

Fees Primary PTA/registration fees (a)	7.23	Year 6	72.50	72.50	72.50	72.50	72.50	72.50	0.0%	0.0%
Fees Secondary PTA/registration fees (a)	5.11	Year 10	58.00	58.00	58.00	58.00	58.00	58.00	0.0%	0.0%
Fees Tertiary NUS registration School Fees	3.79	registration	322.00	322.00	322.00	322.00	322.00	322.00	0.0%	0.0%
Fees Secondary Y Examination Fees (a)	3.61	Y 12-13	25.50	25.50	25.50	25.50	25.50	25.50	0.0%	0.0%

11 Restaurants and hotels

Fish & Chip Meal	7.79	1serve	10.08	10.17	10.17	11.25	11.58	11.58	0.0%	13.9%
Curry & Chopsuey Meal	4.87	1serve	4.00	4.00	4.00	5.00	5.00	5.00	0.0%	25.0%
Chicken & Chips Meal (a)	4.87	1serve	10.43	10.43	10.43	11.86	12.14	12.14	0.0%	16.4%
Steam rice & chicken Meal (a)	4.87	1serve	5.00	5.00	5.00	6.67	6.67	6.67	0.0%	33.3%

12 Miscellaneous goods and services

Toilet Paper Sofan deluxe ply	8.52	250 sheets	1.00	1.00	1.00	1.20	1.21	1.20	-1.0%	20.0%
Hair Gel	4.59	1124 ml	4.61	4.61	4.61	5.29	5.50	5.50	0.0%	19.2%
Storage of remains (a)	4.41	per day	60.00	60.00	60.00	60.00	60.00	60.00	0.0%	0.0%
Basic Casket (a)	4.41	each	1966.67	1966.67	1966.67	1966.67	1966.67	1966.67	0.0%	0.0%
Standard Embalming (a)	4.41	1person	1500.00	1500.00	1500.00	1500.00	1500.00	1500.00	0.0%	0.0%
Toilet soap Protex (a)	4.38	90g	1.91	1.95	1.95	2.04	2.05	2.04	-0.4%	4.2%
Diapers Soft Love (a)	4.19	5kg-10kg	7.37	7.37	7.37	7.51	7.56	7.50	-0.8%	1.7%
Toilet soap Lux	3.87	85g	0.99	0.98	0.98	1.10	1.10	1.10	0.0%	12.8%
Paste Colgate regular flavour	3.43	140g	4.28	4.28	4.33	4.56	4.66	4.76	2.1%	9.7%
Diapers Huggies	1.30	16kg & over	39.47	39.47	39.63	39.68	39.73	39.73	0.0%	0.3%

Source : Samoa Bureau Statistics

(a) : New commodity from February 2016

(P) : Provisional figures

Note : Please note unit of conversion was in pound's (lb's) but been converted into kilograms (kg)

Table 4. IMPORTED GOODS COMPONENT OF THE CONSUMER PRICE INDEX
(Base Period : Average Prices February 2016 = 100)

	All Items	Food and Non Alcoholic Beverages	Alcoholic Beverages, Tobacco and Narcotics	Clothing and Footwear	Housing, Water, Electricity, Gas and other Fuels	Furnishings, Household Equipment and Maintenance	Health	Transport	Communication	Recreation and Culture	Education	Restaurants	Miscellaneous goods and services
Weights	494.7	269.1	23.8	15.2	28.3	26.9	2.5	88.6	n.a	5.6	n.a	n.a	34.7
Ave - 2020	107.9	112.2	117.1	93.2	96.0	97.7	95.8	107.4		87.6			98.0
Ave - 2021	114.0	118.4	118.8	100.9	99.1	98.7	108.0	119.9		87.3			95.9
Ave - 2022	131.5	136.3	119.2	114.6	121.9	105.7	100.9	149.1		90.4			102.0
December 2021	122.7	126.7	119.2	109.4	112.0	99.6	110.6	137.1		88.1			95.7
December 2022	122.7	126.7	119.2	109.4	112.0	99.6	110.6	137.1		88.1			95.7
January	121.6	125.9	119.2	111.2	110.8	100.8	110.6	133.0		88.1			95.9
February	122.4	128.0	119.7	114.3	110.9	102.2	116.1	129.7		88.1			96.4
March	123.6	127.7	119.7	114.7	112.4	103.6	100.1	136.0		91.2			98.3
April	126.0	128.9	119.7	114.5	119.5	102.8	97.2	143.5		91.2			99.2
May	125.8	128.2	118.5	115.4	119.8	102.8	88.1	143.8		91.2			101.2
June	131.1	132.3	118.4	115.3	125.1	107.1	88.1	158.2		91.2			101.0
July	136.6	141.9	119.1	115.4	124.9	107.7	105.0	158.2		89.9			102.5
August	143.6	147.3	119.1	115.8	132.6	109.2	114.0	176.4		91.7			105.3
September	143.3	153.2	119.1	115.1	127.4	108.4	101.1	159.3		91.4			105.4
October	139.8	149.4	119.2	115.4	126.2	109.0	95.3	152.0		87.8			105.8
November	133.8	138.2	119.2	114.1	126.8	107.4	97.4	152.0		91.2			106.9
December (P)	130.7	134.4	119.3	114.2	126.2	106.8	97.4	147.0		91.3			106.7
<u>Percentage Change (P)</u>													
Dec 2022 over Dec 2021	6.6%	6.0%	0.1%	4.4%	12.7%	7.3%	-11.9%	7.2%		3.6%			11.5%
Dec 2022 over Nov 2022	-2.3%	-2.8%	0.1%	0.0%	-0.4%	-0.5%	0.0%	-3.3%		0.1%			-0.2%

Source : Samoa Bureau Statistics

(P) : Provisional figures

Note : n.a. Not applicable

Table 5. IMPORTED ITEMS UNDERLYING INDEX
(Base Period : Average Prices February 2016 = 100)

	All Items	Food and Non Alcoholic Beverages	Alcoholic Beverages, Tobacco and Narcotics	Clothing and Footwear	Housing, Water, Electricity, Gas and other Fuels	Furnishings, Household Equipment and Maintenance	Health	Transport	Communication	Recreation and Culture	Education	Restaurants	Miscellaneous goods and services
Weights	401.2	269.1	n.a	15.2	24.2	26.9	2.5	23.0	n.a	5.6	n.a	n.a	34.7
Ave - 2020	107.6	112.2		93.2	93.7	97.7	95.8	110.4		87.6			98.0
Ave - 2021	112.3	118.4		100.9	94.5	98.7	108.0	114.4		87.3			95.9
Ave - 2022	126.8	136.3		114.6	110.2	105.7	100.9	115.7		90.4			102.0
2021													
December 2022	118.9	126.7		109.4	104.7	99.6	110.6	114.5		88.1			95.7
January	118.5	125.9		111.2	104.5	100.8	110.6	114.4		88.1			95.9
February	120.3	128.0		114.3	105.4	102.2	116.1	114.6		88.1			96.4
March	120.2	127.7		114.7	105.1	103.6	100.1	114.6		91.2			98.3
April	121.4	128.9		114.5	111.5	102.8	97.2	114.6		91.2			99.2
May	121.2	128.2		115.4	111.8	102.8	88.1	114.6		91.2			101.2
June	124.1	132.3		115.3	111.5	107.1	88.1	114.6		91.2			101.0
July	130.9	141.9		115.4	111.2	107.7	105.0	114.6		89.9			102.5
August	135.0	147.3		115.8	111.9	109.2	114.0	116.1		91.7			105.3
September	139.0	153.2		115.1	112.6	108.4	101.1	117.5		91.4			105.4
October	136.4	149.4		115.4	112.2	109.0	95.3	117.6		87.8			105.8
November	128.9	138.2		114.1	112.9	107.4	97.4	117.8		91.2			106.9
December (P)	126.2	134.4		114.2	112.4	106.8	97.4	117.8		91.3			106.7
<u>Percentage Change (P)</u>													
Dec 2022 over Dec 2021	6.2%	6.0%		4.4%	7.3%	7.3%	-11.9%	2.9%		3.6%			11.5%
Dec 2022 over Nov 2022	-2.1%	-2.8%		0.0%	-0.5%	-0.5%	0.0%	0.0%		0.1%			-0.2%

Source : Samoa Bureau Statistics

(P) : Provisional figures

Note : n.a. Not applicable

Table 6. LOCAL GOODS COMPONENT OF THE CONSUMER PRICE INDEX
(Base Period : Average Prices February 2016 = 100)

Group	All Items	Food and Non Alcoholic Beverages	Alcoholic Beverages, Tobacco and Narcotics	Clothing and Footwear	Housing, Water, Electricity, Gas and other Fuels	Furnishings, Household Equipment and Maintenance	Health	Transport	Communication	Recreation and Culture	Education	Restaurants	Miscellaneous goods and services
Weights	505.3	134.6	104.6	6.0	91.3	3.9	2.2	59.9	51.5	0.4	19.7	22.4	8.8
Ave - 2020	105.3	106.8	120.7	94.2	87.6	100.3	103.0	100.1	104.2	100.0	114.9	109.4	102.3
Ave - 2021	105.9	105.6	122.2	93.8	90.3	100.3	103.0	99.6	107.1	100.0	109.9	111.2	102.3
Ave - 2022	112.6	122.8	123.6	92.1	84.2	100.6	103.0	104.3	124.5	100.0	109.4	126.2	102.3
2021													
December 2022	108.2	115.8	122.3	94.2	83.9	100.3	103.0	97.9	115.9	100.0	109.4	111.7	102.3
January	108.3	115.1	122.2	94.2	83.9	100.3	103.0	98.2	115.8	100.0	109.4	118.3	102.3
February	108.4	115.4	122.7	94.2	83.9	100.5	103.0	98.2	115.8	100.0	109.4	118.3	102.3
March	108.9	116.6	123.3	94.2	83.9	100.5	103.0	98.2	115.8	100.0	109.4	118.3	102.3
April	108.6	115.8	123.1	94.2	83.9	100.5	103.0	98.2	115.8	100.0	109.4	118.3	102.3
May	109.0	116.9	123.5	94.2	83.9	100.5	103.0	98.2	115.8	100.0	109.4	118.3	102.3
June	111.2	122.4	123.6	94.2	83.9	100.5	103.0	100.1	115.8	100.0	109.4	128.3	102.3
July	114.4	123.9	123.9	90.4	83.9	100.6	103.0	107.9	133.7	100.0	109.4	128.5	102.3
August	116.4	129.5	124.4	90.6	84.7	100.6	103.0	110.6	133.7	100.0	109.4	129.2	102.3
September	117.1	129.9	124.4	89.8	84.7	100.8	103.0	113.7	133.7	100.0	109.4	133.8	102.3
October	115.9	126.7	124.3	91.1	84.7	100.9	103.0	110.6	133.7	100.0	109.4	133.2	102.3
November	115.5	126.3	124.4	88.3	84.7	101.0	103.0	109.7	132.0	100.0	109.4	135.1	102.3
December (P)	117.5	134.6	123.9	90.1	84.7	101.0	103.0	107.8	132.0	100.0	109.4	135.1	102.3
<u>Percentage Change (P)</u>													
Dec 2022 over Dec 2021	8.6%	16.3%	1.3%	-4.3%	1.0%	0.7%	0.0%	10.1%	13.9%	0.0%	0.0%	21.0%	0.0%
Dec 2022 over Nov 2022	1.7%	6.6%	-0.4%	2.1%	0.0%	0.0%	0.0%	-1.7%	0.0%	0.0%	0.0%	0.0%	0.0%

Source : Samoa Bureau Statistics

(P) : Provisional figures

Table 7. LOCAL ITEMS UNDERLYING INDEX

(Base Period : Average Prices February 2016 = 100)

Group	All Items	Food and Non Alcoholic Beverages	Alcoholic Beverages, Tobacco and Narcotics	Clothing and Footwear	Housing, Water, Electricity, Gas and other Fuels	Furnishings, Household Equipment and Maintenance	Health	Transport	Communication	Recreation and Culture	Education	Restaurants	Miscellaneous goods and services
Weights	185.5	76.1	n.a	6.0	n.a	3.9	1.0	3.4	51.5	n.a	12.3	22.4	8.8
Ave - 2020	104.6	101.9		94.2		100.3	106.3	108.6	104.2		120.6	109.4	102.3
Ave - 2021	105.1	102.1		93.8		100.3	106.3	108.6	107.1		112.7	111.2	102.3
Ave - 2022	114.3	108.1		92.1		100.6	106.3	114.4	124.5		111.9	126.2	102.3
2021													
December 2022	107.8	102.5		94.2		100.3	106.3	108.6	115.9		111.9	111.7	102.3
January	108.9	103.0		94.2		100.3	106.3	114.4	115.8		111.9	118.3	102.3
February	108.7	102.6		94.2		100.5	106.3	114.4	115.8		111.9	118.3	102.3
March	108.7	102.6		94.2		100.5	106.3	114.4	115.8		111.9	118.3	102.3
April	108.7	102.6		94.2		100.5	106.3	114.4	115.8		111.9	118.3	102.3
May	109.0	103.5		94.2		100.5	106.3	114.4	115.8		111.9	118.3	102.3
June	112.7	109.5		94.2		100.5	106.3	114.4	115.8		111.9	128.3	102.3
July	117.8	109.9		90.4		100.6	106.3	114.4	133.7		111.9	128.5	102.3
August	117.9	109.9		90.6		100.6	106.3	114.4	133.7		111.9	129.2	102.3
September	119.2	111.8		89.8		100.8	106.3	114.4	133.7		111.9	133.8	102.3
October	119.5	112.7		91.1		100.9	106.3	114.4	133.7		111.9	133.2	102.3
November	119.8	114.2		88.3		101.0	106.3	114.4	132.0		111.9	135.1	102.3
December (P)	120.3	115.2		90.1		101.0	106.3	114.4	132.0		111.9	135.1	102.3
<u>Percentage Change (P)</u>													
Dec 2022 over Dec 2021	11.6%	12.3%		-4.3%		0.7%	0.0%	5.3%	13.9%		0.0%	21.0%	0.0%
Dec 2022 over Nov 2022	0.4%	0.9%		2.1%		0.0%	0.0%	0.0%	0.0%		0.0%	0.0%	0.0%

Source : Samoa Bureau Statistics

(P) : Provisional figures

Note : n.a. Not applicable

Table 8. CONSUMER PRICE INDEX (AVERAGE ANNUAL INFLATION RATE).

(Base Period : Average Prices February 2016 = 100)

Group	All Items	Food and Non Alcoholic Beverages	Alcoholic Beverages, Tobacco and Narcotics	Clothing and Footwear	Housing, Water , Electricity, Gas and other Fuels	Furnishings, Household Equipment, and Maintenance	Health	Transport	Communication	Recreation and Culture	Education	Restaurants	Miscellaneous goods and services
<i>Weights</i>	1000.0	403.7	128.4	21.2	119.6	30.8	4.6	148.5	51.5	6.1	19.7	22.4	43.5
2019	1.0	1.0	4.1	-1.6	4.4	-1.6	3.1	-3.2	0.9	-4.2	2.8	4.4	0.0
2020	-1.6	-1.5	2.7	-0.3	-5.7	1.8	-0.9	-6.1	0.0	-0.3	1.2	5.9	1.0
2021	3.1	3.4	1.3	5.8	3.1	0.9	6.5	7.0	2.8	-0.3	-4.3	1.7	-1.6
2022	11.0	15.5	1.0	9.5	0.8	6.2	-3.6	17.3	16.2	3.2	-0.4	13.5	5.0
2021													
December	3.1	3.4	1.3	5.8	3.1	0.9	6.5	7.0	2.8	-0.3	-4.3	1.7	-1.6
January	4.5	5.3	1.2	6.9	5.3	0.7	6.5	9.2	3.7	0.1	-4.7	2.0	-1.9
February	5.7	7.0	1.1	8.4	6.6	1.0	6.5	11.0	4.7	0.4	-4.3	2.4	-1.9
March	6.7	8.5	1.0	10.0	7.8	1.2	5.8	12.5	5.6	1.1	-4.0	2.7	-1.7
April	7.6	10.0	0.9	11.5	7.8	1.3	5.1	13.8	6.5	1.6	-3.6	3.0	-1.4
May	8.2	11.0	0.8	13.1	7.9	1.7	3.8	14.1	7.4	1.9	-3.2	3.4	-0.9
June	8.8	12.2	0.6	14.5	6.3	2.4	2.4	14.6	8.4	2.0	-2.8	4.5	-0.1
July	9.5	13.6	0.7	13.6	4.7	3.1	1.7	15.3	10.7	2.1	-2.4	5.6	0.7
August	10.3	14.9	0.8	12.9	3.2	3.8	1.0	16.9	13.1	2.5	-2.0	6.7	1.5
September	11.0	16.2	0.9	12.1	1.9	4.4	-0.1	17.5	15.5	2.9	-1.6	8.4	2.3
October	11.3	16.8	0.9	11.3	0.1	5.1	-1.5	17.9	15.8	2.8	-1.2	10.0	3.2
November	11.3	16.3	1.0	10.4	0.6	5.7	-2.7	18.2	16.0	3.0	-0.8	11.8	4.1
December (P)	11.0	15.5	1.0	9.5	0.8	6.2	-3.6	17.3	16.2	3.2	-0.4	13.5	5.0

Source : Samoa Bureau Statistics

(P) : Provisional figures

Table 9 Consumer Price Index (Percentage change and Average Annual Inflation)

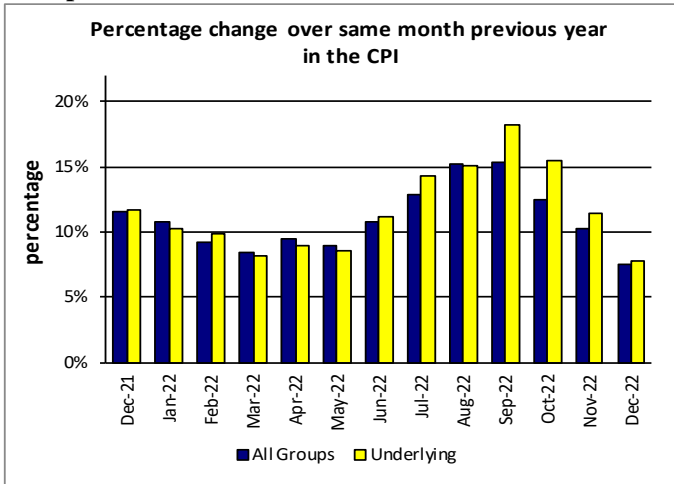
(Base Period: Average Prices February 2016 = 100)

Period	CPI ALL ITEMS	Percentage change over previous month	Last 12 months over previous 12 months	UNDERLYING ALL ITEMS	Percentage change over previous month	Last 12 months over previous 12 months	LOCAL COMPONENT	Percentage change over previous month	Last 12 months over previous 12 months	IMPORTED COMPONENT	Percentage change over previous month	Last 12 months over previous 12 months
2019	108.3	-	1.0	107.2	-	0.5	105.5	-	2.8	111.1	-	-0.7
2020	106.6	-	-1.6	106.6	-	-0.5	105.3	-	-0.2	107.9	-	-2.9
2021	109.9	-	3.1	110.1	-	3.2	105.9	-	0.6	114.0	-	5.7
2022	122.0	-	11.0	122.9	-	11.6	112.6	-	6.3	131.5	-	15.3
2021												
December	115.3	2.0	3.1	115.4	2.0	3.2	108.2	0.0	0.6	122.7	3.9	5.7
2022												
January	114.8	-0.4	4.5	115.4	0.1	4.2	108.3	0.1	1.4	121.6	-0.9	7.6
February	115.3	0.4	5.7	116.6	1.0	5.3	108.4	0.2	2.0	122.4	0.7	9.3
March	116.2	0.7	6.7	116.6	0.0	6.2	108.9	0.4	2.7	123.6	1.0	10.8
April	117.2	0.9	7.6	117.4	0.7	7.0	108.6	-0.3	3.1	126.0	2.0	12.1
May	117.3	0.1	8.2	117.3	-0.1	7.6	109.0	0.4	3.6	125.8	-0.2	12.7
June	121.0	3.2	8.8	120.5	2.7	8.4	111.2	2.0	3.9	131.1	4.2	13.6
July	125.3	3.6	9.5	126.7	5.2	9.4	114.4	2.9	4.4	136.6	4.2	14.5
August	129.9	3.6	10.3	129.6	2.3	10.4	116.4	1.8	4.9	143.6	5.1	15.6
September	130.1	0.2	11.0	132.7	2.4	11.4	117.1	0.6	5.5	143.3	-0.2	16.4
October	127.7	-1.8	11.3	131.1	-1.2	11.9	115.9	-1.1	5.7	139.8	-2.4	16.6
November	124.6	-2.5	11.3	126.0	-3.8	12.0	115.5	-0.3	6.0	133.8	-4.3	16.4
December (P)	124.0	-0.4	11.0	124.4	-1.3	11.6	117.5	1.7	6.3	130.7	-2.3	15.3

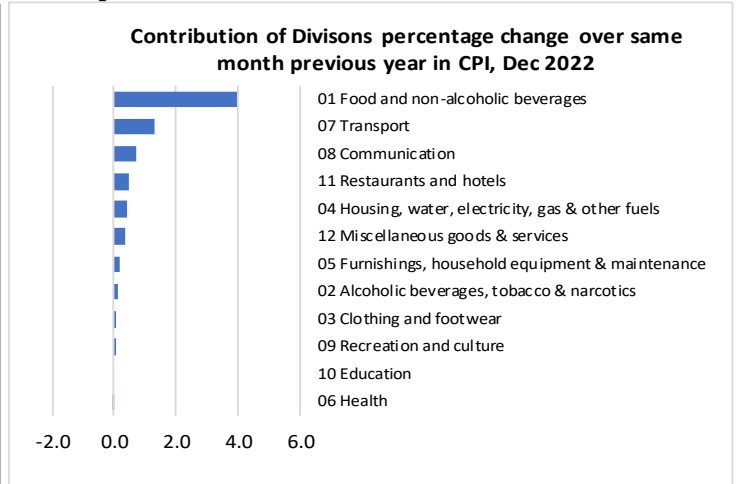
Source : Samoa Bureau Statistics

(P) : Provisional figures

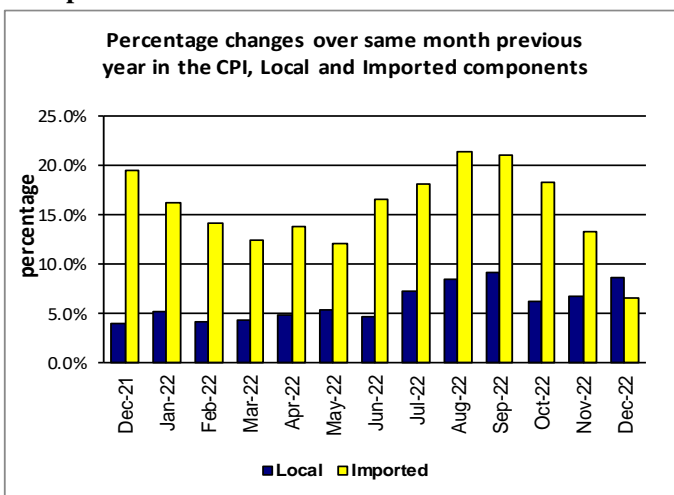
Graph.5



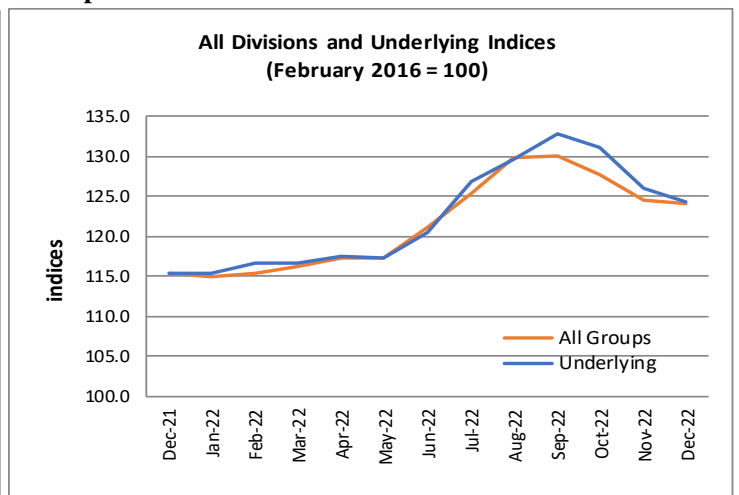
Graph.6



Graph.7



Graph.8



Graph.9

