

Please address all correspondence  
To Government Statistician  
In reply, please quote the file reference



GOVERNMENT OF SAMOA

File Ref: CPI 1/2022

## SAMOA BUREAU OF STATISTICS

# CONSUMER PRICE INDEX JANUARY 2022

### Key findings:

The Consumer Price Index for January 2022 decreased 0.4 percent compared to the previous month.

- The Transport index decreased by 1.9 percent driven by reduced fuel prices.
- The Restaurants index increased by 6.0 percent.
- The Average Annual Inflation for the year ended January 2022 was 4.5 percent.

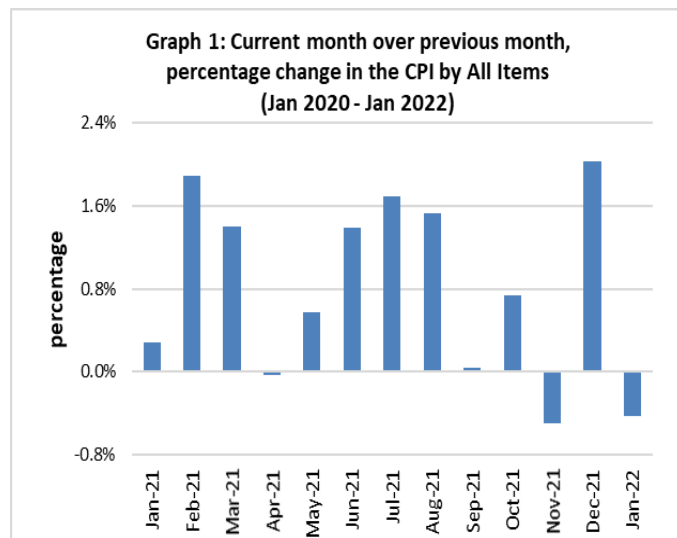
The CPI went up by 10.8 percent from January 2021.

### SUMMARY

The Consumer Price Index for January 2022 was 0.4 percent lower than in December 2021 and 10.8 percent higher than January 2021.

The decrease of the Imported Goods Component by 0.9 percent reflects lower prices for fuel and imported food, which were also the main contributors to the decrease of 0.4 percent in the All Items Consumer Price Index.

The Local Component recorded an increase of 0.1 percent from the previous month. Graph 1 shows the month to month percentage changes in the Consumer Price Index by All Divisions from January 2021 to January 2022.

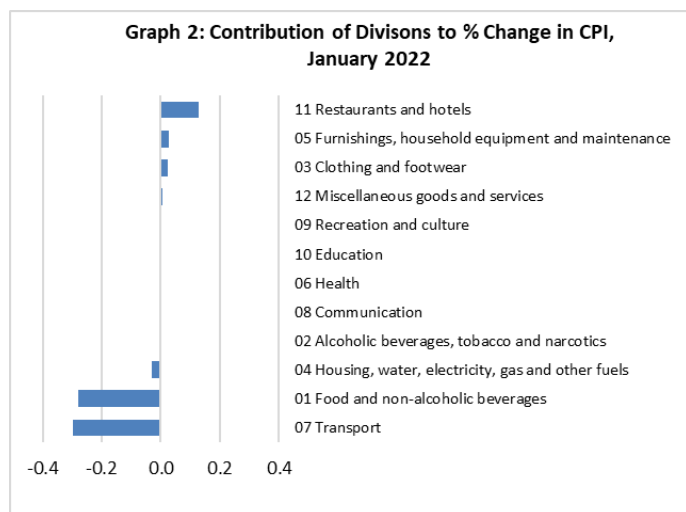


Source : Samoa Bureau of Statistics

## Total All Divisions Contribution

As depicted in Graph 2, Transport, Food & Non Alcoholic Beverages and Housing, Water, Electricity, Gas & other Fuels divisions were the main contributors to the overall decrease of 0.4 percent in the All Division Consumer Price Index.

On the other hand, there were offsetting positive contributions from the Restaurants, Furnishings and Clothing & Footwear divisions to name a few with contributions of less than 0.2 percentage point each.



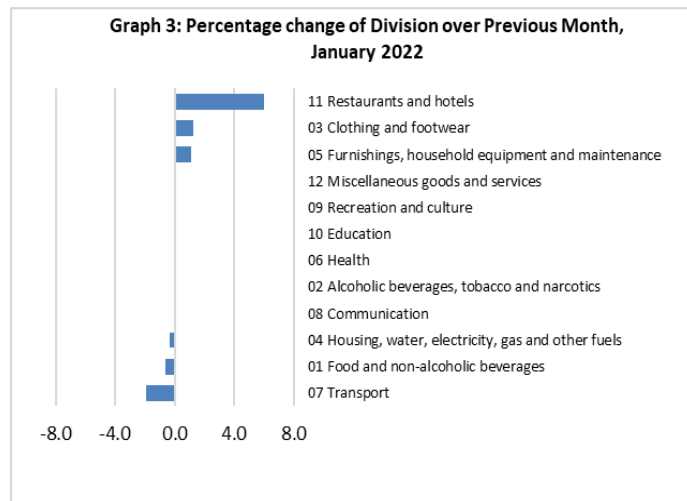
Source : Samoa Bureau of Statistics

## Consumer Price Index (% Change)

The 0.4 percent decrease in the Overall Index was mainly due to a decrease of 1.9 percent in the Transport index. Food & Non Alcoholic Beverages and Housing, Water, Electricity Gas & Other Fuel indices also decreased by 0.6 and 0.3 percent respectively.

On the other hand, increases were registered for the Restaurants index with 6.0 percent, Clothing & Footwear index with 1.3 percent, Furnishing, Household Equipment & Maintenance with 1.1 percent and Miscellaneous Goods & Services index with 0.1 percent.

No changes were recorded for the Alcoholic Beverages & Tobacco, Health, Communication, Recreation & Culture and Education indices. Graphically presented in Graph 3 is the January 2022 percentage change for all divisions from December 2021.



Source : Samoa Bureau of Statistics

## Imported Goods Component

The Imported Goods Component of the Consumer Price Index registered a decrease of 0.9 percent when compared to the previous month. This decrease was mainly due to lower prices recorded for imported food, fuel (petrol & diesel), liquid gas and kerosene.

## Local Goods Component

Increased prices recorded for meal and car repair (labour charge) have resulted in the 0.1 percent increase in the local Goods Component.

## Transport Index

Lower prices recorded for fuel (petrol & diesel) is reflected in the 1.9 percent decrease in the Transport index.

## Food and Non Alcoholic Beverages Index

The 0.6 percent decrease in the Food and Non Alcoholic Beverages index was mainly due to lower prices recorded for chicken leg quarter, taro, maggie noodle, fresh fish (piece & large), pig trotter and mutton neck.

## Restaurants Index

Increased prices recorded for meal is reflected in the 6.0 percent increase in the Restaurants index.

## Clothing and Footwear Index

Increased prices recorded for school uniform was reflected in the 1.3 percent increase in the Clothing and Footwear index.

## Furnishings, Household Equipment, and Maintenance Index

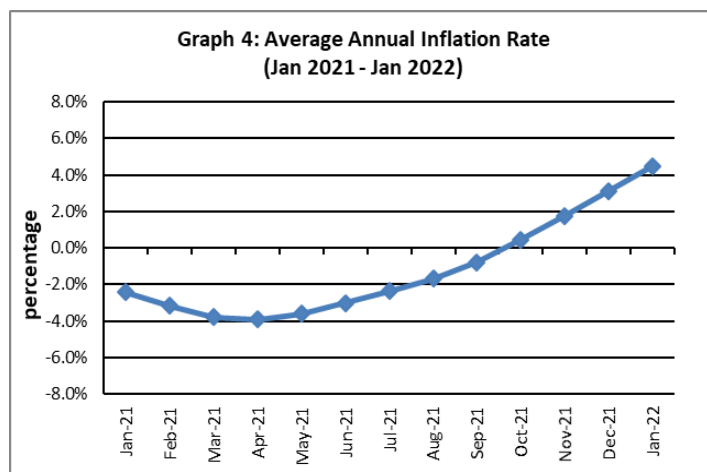
The Furnishing, Household, Equipment and Maintenance index recorded an increase of 1.1 percent due to the increase in prices recorded for washing powder, mosquito coil and clothing chest.

## Underlying Indices <sup>1/</sup>

The All Items Underlying Index for January 2022 registered an increase of 0.1 percent when compared to December 2021, and an increase of 10.2 percent when compared to January 2021. The Local Items Underlying Index registered an increase of 1.0 percent, while the Imported Items Underlying Index recorded a decrease of 0.3 percent from the previous month.

## Inflation Rate

The average annual inflation rate for the year ended January 2022 was 4.5 percent. For the twelve months ending January 2021, the inflation rate was negative 2.4 percent. Presented in Graph 4 is the average annual inflation rate (January 2021 - January 2022).



Source : Samoa Bureau of Statistics

The attached Tables and Graphs provide the user with more detailed analysis.

## Technical Notes:

*The Consumer Price (CPI) measures the rate of inflation for Samoa. It is designed to measure the change in prices for the goods purchased by households in Samoa. The CPI measures the change in prices by comparing the prices for a basket of goods and services at the collection period with the price for the same goods in a base period.*

*The basket of goods that is priced is based on the average expenditures of households as recorded in the Household Income and Expenditure Survey (HIES). The HIES survey identifies how much households spend on different items. The more households spend on an item on average, the more important it is to the price index, and the higher the weight in the index.*

<sup>1/</sup> *Monthly movements in the 'headline' CPI series can be volatile. This volatility reflects price changes in particular items that may be due, among other factors, to fluctuations in commodity markets and agricultural conditions, policy changes, or seasonal or infrequent price resetting.*

*Underlying inflation is a measure of inflation that excludes certain items that face volatile price movements. Underlying inflation eliminates products that can have temporary price shocks because these shocks can diverge from the overall trend of inflation and give a false measure of inflation.*

**SAMOA BUREAU OF STATISTICS**

*Economic Statistics Division  
FMFM II Building, Level 1  
P O Box 1151  
Apia, Samoa*

*Phone: (685) 62014/62015  
Fax: (685) 24675  
E-mail: [info.stats@sbs.gov.ws](mailto:info.stats@sbs.gov.ws)  
Website: [www.sbs.gov.ws](http://www.sbs.gov.ws)*

Date of release: 11<sup>th</sup> February 2022.

The next Consumer Price Index will be released on 9<sup>th</sup> March 2022.

Ta'ala Lilianealani Hennemann-Leleimalefaga  
**ACTING GOVERNMENT STATISTICIAN/(CEO)**

**Table 1. CONSUMER PRICE INDEX.**

**(Base Period : Average Prices February 2016 = 100)**

Group	All Items	Food and Non Alcoholic Beverages	Alcoholic Beverages, Tobacco and Narcotics	Clothing and Footwear	Housing, Water, Electricity, Gas and other Fuels	Furnishings, Household Equipment, and Maintenance	Health	Transport	Communication	Recreation and Culture	Education	Restaurants	Miscellaneous goods and services
<i>Weights</i>	<b>1000.0</b>	<b>403.7</b>	<b>128.4</b>	<b>21.2</b>	<b>119.6</b>	<b>30.8</b>	<b>4.6</b>	<b>148.5</b>	<b>51.5</b>	<b>6.1</b>	<b>19.7</b>	<b>22.4</b>	<b>43.5</b>
<i>Ave - 2019</i>	108.3	112.1	116.8	93.8	95.0	96.4	100.0	111.3	104.2	88.7	113.5	103.3	97.8
<i>Ave - 2020</i>	106.6	110.4	120.0	93.5	89.6	98.1	99.2	104.4	104.2	88.5	114.9	109.4	98.8
<i>Ave - 2021</i>	109.9	114.1	121.6	98.9	92.4	98.9	105.7	111.7	107.1	88.2	109.9	111.2	97.2
2021													
January	103.7	105.0	121.8	93.4	83.6	99.6	103.6	102.1	104.2	87.3	114.9	111.0	99.0
February	105.6	108.5	121.5	92.7	87.3	98.1	104.8	104.7	104.2	87.6	109.4	111.0	97.7
March	107.1	111.1	121.5	92.7	87.6	99.6	105.0	107.1	104.2	87.0	109.4	111.0	97.3
April	107.1	109.8	121.5	92.7	88.8	99.3	104.3	109.6	104.2	87.0	109.4	111.0	97.4
May	107.7	110.5	121.5	92.5	88.9	98.6	105.0	111.5	104.2	88.3	109.4	111.0	97.5
June	109.2	111.9	121.7	93.5	97.2	98.0	105.0	111.5	104.2	89.3	109.4	111.0	95.9
July	111.0	115.3	121.8	104.9	97.5	98.3	105.0	112.5	104.2	88.8	109.4	111.0	96.8
August	112.7	118.5	121.4	104.8	98.8	98.9	107.0	114.1	104.2	88.3	109.4	111.4	97.1
September	112.8	117.9	121.6	104.5	98.9	99.2	107.0	115.9	104.2	88.3	109.4	111.4	96.9
October	113.6	118.1	121.6	104.9	101.0	98.9	107.0	115.1	115.9	89.0	109.4	111.4	96.9
November	113.0	120.1	121.6	105.1	88.9	98.7	107.0	115.5	115.9	89.0	109.4	111.7	96.9
December	115.3	123.1	121.7	105.1	90.5	99.7	107.0	121.3	115.9	89.0	109.4	111.7	97.1
2022													
January (P)	114.8	122.3	121.7	106.4	90.2	100.7	107.0	119.0	115.8	89.0	109.4	118.3	97.2
<b><u>Percentage Change (P)</u></b>													
Jan 2022 over Dec 2021	-0.4%	-0.6%	0.0%	1.3%	-0.3%	1.1%	0.0%	-1.9%	0.0%	0.0%	0.0%	6.0%	0.1%
Jan 2022 over Jan 2021	10.8%	16.5%	-0.1%	13.9%	7.9%	1.1%	3.3%	16.5%	11.1%	1.9%	-4.7%	6.6%	-1.8%

Source : Samoa Bureau Statistics

(P) : Provisional figures

**Table 2. ALL ITEMS UNDERLYING INDEX**

(Base Period : Average Prices February 2016 = 100)

Group	All Items	Food and Non Alcoholic Beverages	Alcoholic Beverages, Tobacco and Narcotics	Clothing and Footwear	Housing, Water , Electricity, Gas and other Fuels	Furnishings, Household Equipment, and Maintenance	Health	Transport	Communication	Recreation and Culture	Education	Restaurants	Miscellaneous goods and services
<i>Weights</i>	<b>586.7</b>	<b>345.3</b>	<i>n.a</i>	<b>21.2</b>	<b>24.2</b>	<b>30.8</b>	<b>3.5</b>	<b>26.4</b>	<b>51.5</b>	<b>5.6</b>	<b>12.3</b>	<b>22.4</b>	<b>43.5</b>
Ave - 2019	107.2	111.6		93.8	94.6	96.4	100.1	108.1	104.2	87.9	118.5	103.3	97.8
Ave - 2020	106.6	109.9		93.5	93.7	98.1	98.9	110.1	104.2	87.6	120.6	109.4	98.8
Ave - 2021	110.1	114.8		98.9	94.5	98.9	107.5	113.6	107.1	87.3	112.7	111.2	97.2
2021													
January	104.7	106.3		93.4	91.5	99.6	104.7	113.3	104.2	86.3	120.6	111.0	99.0
February	106.1	109.3		92.7	91.2	98.1	106.3	112.7	104.2	86.6	111.9	111.0	97.7
March	107.8	111.9		92.7	92.4	99.6	106.7	114.0	104.2	86.0	111.9	111.0	97.3
April	107.8	111.9		92.7	92.1	99.3	105.7	114.0	104.2	86.0	111.9	111.0	97.4
May	108.1	112.5		92.5	92.5	98.6	106.7	114.0	104.2	87.4	111.9	111.0	97.5
June	108.4	113.2		93.5	92.7	98.0	106.7	113.9	104.2	88.5	111.9	111.0	95.9
July	110.9	116.6		104.9	93.0	98.3	106.7	113.5	104.2	88.0	111.9	111.0	96.8
August	112.6	119.4		104.8	93.7	98.9	109.3	113.5	104.2	87.4	111.9	111.4	97.1
September	112.3	118.8		104.5	94.0	99.2	109.3	113.5	104.2	87.4	111.9	111.4	96.9
October	113.5	118.8		104.9	97.5	98.9	109.3	113.8	115.9	88.1	111.9	111.4	96.9
November	113.1	117.9		105.1	99.2	98.7	109.3	113.8	115.9	88.1	111.9	111.7	96.9
December	115.4	121.4		105.1	104.7	99.7	109.3	113.8	115.9	88.1	111.9	111.7	97.1
2022													
January (P)	115.4	120.9		106.4	104.5	100.7	109.3	114.4	115.8	88.1	111.9	118.3	97.2
<b><u>Percentage Change (P)</u></b>													
Jan 2022													
over	0.1%	-0.4%		1.3%	-0.2%	1.1%	0.0%	0.6%	0.0%	0.0%	0.0%	6.0%	0.1%
Dec 2021													
Jan 2022													
over	10.2%	13.7%		13.9%	14.2%	1.1%	4.4%	1.0%	11.1%	2.1%	-7.2%	6.6%	-1.8%
Jan 2021													

Source : Samoa Bureau Statistics

(P) : Provisional figures

Note : n.a. Not applicable

**Table 3. AVERAGE RETAIL PRICES OF SELECTED COMMODITIES**

Commodities	Wt	Unit	2020		2021		2022	
			Nov	Dec	Jan	Nov	Dec	Jan (P)
<b>01 Food and non-alcoholic beverages</b>								
Leg Quarters Chicken	62.2	kg	3.16	3.16	3.42	4.83	5.08	4.96
Raw Sugar	21.3	kg	2.49	2.51	2.51	2.91	2.92	2.96
Bread	17.2	loaf	1.64	1.66	1.64	1.64	1.64	1.64
Corned Beef (a)	15.9	340 grms	8.20	8.20	8.25	8.55	8.55	8.62
Taro	15.2	kg	2.21	1.82	1.71	3.71	3.68	3.46
Re-packed medium grain rice	13.4	kg	2.60	2.55	2.63	2.79	3.06	3.08
Prepacked medium grain rice (a)	13.4	907 grms	2.85	2.85	2.85	2.80	2.77	2.77
Canned fish between \$3.00 and \$3.99 Natural Oil	12.7	425 grms	3.37	3.37	3.41	3.19	3.16	3.19
Bongo	10.2	20 grms	0.83	0.83	0.83	0.83	0.83	0.83
Keke Saina Biscuits (a)	9.2	pkt 10	6.17	6.17	6.17	6.13	6.21	6.23
Ice Cream (a)	9.2	2 ltr	15.33	15.33	15.37	15.60	15.77	16.00
Ramen	9.0	85 grms	1.03	1.00	1.00	1.11	1.14	1.08
Fish (Piece)	7.9	kg	20.31	21.20	18.45	25.82	25.00	24.42
Butter	7.7	454 grms	15.44	15.61	15.76	16.11	16.36	16.36
Round Pancake (a)	7.5	sml	0.15	0.15	0.15	0.15	0.15	0.15
Mutton Flaps	6.6	kg	24.26	24.09	24.22	25.04	25.61	25.27
Canned fish \$4:00 or over N/Oil	6.4	425 grms	4.98	5.10	5.06	4.69	4.89	4.74
Canned fish under \$3.00 in N/Oil	6.4	425 grms	2.82	2.80	2.75	2.73	2.78	2.78
Wings Turkey	6.3	kg	7.48	7.96	7.94	8.19	8.69	8.78
Fish (string)	6.0	kg	9.87	9.67	10.06	10.24	9.67	10.81
Fish (large)	6.0	kg	16.43	17.29	15.87	16.25	16.36	15.38
<b>02 Alcoholic beverages, tobacco and narcotics</b>								
Lager Beer	37.9	355 mls	3.63	3.63	3.68	3.65	3.65	3.67
Pall Mall Filter Cigarettes (Red)	24.3	20 rolls	14.60	14.60	14.60	14.60	14.60	14.60
Pall Mall Menthol Cigarettes (Green)	24.3	20 rolls	14.60	14.60	14.60	14.60	14.60	14.60
Beer (a)	16.3	330 mls	3.48	3.48	3.50	3.55	3.56	3.56
Tobacco (a)	12.6	30 grms	15.00	15.00	15.00	15.00	15.00	15.00
<b>03 Clothing and footwear</b>								
Uniform le Faitaga College boys	4.3	size 8-10	29.67	29.67	29.67	37.00	37.00	37.67
Uniform Pa'ave (a)	3.7	size 7	31.00	31.00	31.00	37.33	37.33	39.33
<b>04 Housing, water, electricity, gas and other fuels</b>								
Electricity Cashpower	50.6	kw h	0.58	0.58	0.48	0.58	0.58	0.58
Reservoir treated Water	28.5	15-40 m3	1.47	1.47	1.47	1.34	1.34	1.34
Liquid gas	15.8	9kg	59.25	59.25	59.00	62.50	66.00	65.50
Government house Rent	12.2	2 b/room	650.00	650.00	650.00	650.00	650.00	650.00
<b>05 Furnishings, household equipment and routine household maintenance</b>								
Washing powder (a)	6.3	200 grms	1.88	1.88	1.88	1.87	1.88	1.98
Soap yellow Washing soap	5.9	bar	2.73	2.79	2.90	2.76	2.85	2.85
Mosquito coil	4.4	10 coil	1.33	1.33	1.33	1.28	1.30	1.33

## 06 Health

Amoxicillin 500mg tablets (a)	2.5	20 tablets	7.17	7.50	7.67	8.50	8.50	8.50
Hospital Charge	1.1	per night	22.50	22.50	22.50	22.50	22.50	22.50

## 07 Transport

Petrol	60.8	1 ltr	2.18	2.18	2.17	2.86	3.15	3.03
Taxi Fare P.O to Motoootua Hosp	8.2	per trip	4.80	4.80	4.80	4.80	4.80	4.80
Taxi Fares P.O to Malua	8.2	per trip	31.30	31.30	31.30	31.30	31.30	31.30
Taxi Fares P.O to Falefa	8.2	per trip	43.20	43.20	43.20	43.20	43.20	43.20
Air Fares Fagalii Pago Fagalii	6.8	return trip	395.00	395.00	395.00	395.00	395.00	395.00
Air Fares Apia Auckland Apia	6.8	1 month	1257.87	1257.87	1257.87	1257.87	1257.87	1257.87

## 08 Communication

Calling per minute Rate cell phone (a)	10.02	per minute	0.43	0.43	0.43	0.43	0.43	0.43
Internet data bundles per mb Rate (a)	10.02	per mb	0.25	0.25	0.25	0.25	0.25	0.25
Calling per minute Rate cell phone (a)	10.02	per minute	0.44	0.44	0.44	0.44	0.44	0.44
Internet data bundles per mb Rate (a)	10.02	per mb	0.20	0.20	0.20	0.32	0.32	0.32

## 09 Recreation and culture

Television LCD 32" (a)	2.30	LCD 32"	852.83	852.83	852.83	852.83	852.83	852.83
Exercise Book w arwick	1.44	1B4	1.40	1.40	1.37	1.48	1.48	1.48
Laptop (a)	1.33	each	2938.60	2938.60	2938.60	2898.60	2898.60	2898.60

## 10 Education

Fees PTA Primary Y Urban Registration fees (a)	7.23	Year 6	82.50	82.50	82.50	72.50	72.50	72.50
Fees PTA Secondary Y Urban Registration fees (a)	5.11	Year 10	58.00	58.00	58.00	58.00	58.00	58.00
Fees Tertiary NUS registration School Fees	3.79	registration	322.00	322.00	322.00	322.00	322.00	322.00
Fees Secondary Y Examination Fees (a)	3.61	Y12-13	25.50	25.50	25.50	25.50	25.50	25.50

## 11 Restaurants and hotels

Fish & Chip Meal	7.79	1 serve	9.58	9.58	10.08	10.17	10.17	10.17
Curry & Chopsuey Meal	4.87	1 serve	4.67	4.67	4.00	4.00	4.00	4.67
Chicken & Chips Meal (a)	4.87	1 serve	10.00	10.00	10.29	10.43	10.43	10.43
Steam rice & chicken Meal (a)	4.87	1 serve	5.00	5.00	5.00	5.00	5.00	5.50

## 12 Miscellaneous goods and services

Paper Sofan deluxe ply Toilet Paper	8.52	250 sheets	1.05	1.05	1.05	1.00	1.00	1.00
Hair Gel	4.59	1124 ml	4.40	4.76	4.76	4.61	4.61	4.61
Price for Storage of remains (a)	4.41	per day	60.00	60.00	60.00	60.00	60.00	60.00
Basic Casket (a)	4.41	each	1966.67	1966.67	1966.67	1966.67	1966.67	1966.67
Standard Embalming (a)	4.41	1 person	1500.00	1500.00	1500.00	1500.00	1500.00	1500.00
Toilet soap (a)	4.38	90g	1.97	1.97	1.97	1.95	1.95	1.96
Diapers (a)	4.19	5kg-10kg	8.14	8.14	8.14	7.37	7.37	7.31

Source : Samoa Bureau Statistics

(a) : New commodity from February 2016

■ : Revised figures

(P) : Provisional figures

Note : Please note unit of conversion was in pound's (lb's) but been converted into kilograms (kg)

**Table 4. IMPORTED GOODS COMPONENT OF THE CONSUMER PRICE INDEX**  
(Base Period : Average Prices February 2016 = 100)

Group	All Items	Food and Non Alcoholic Beverages	Alcoholic Beverages, Tobacco and Narcotics	Clothing and Footwear	Housing, Water, Electricity, Gas and other Fuels	Furnishings, Household Equipment and Maintenance	Health	Transport	Communication	Recreation and Culture	Education	Restaurants	Miscellaneous goods and services
<i>Weights</i>	<b>494.7</b>	<b>269.1</b>	<b>23.8</b>	<b>15.2</b>	<b>28.3</b>	<b>26.9</b>	<b>2.5</b>	<b>88.6</b>	<i>n.a</i>	<b>5.6</b>	<i>n.a</i>	<i>n.a</i>	<b>34.7</b>
<i>Ave - 2019</i>	111.1	114.5	118.3	93.7	100.8	95.8	97.9	117.3		87.9			96.7
<i>Ave - 2020</i>	107.9	112.2	117.1	93.2	96.0	97.7	95.8	107.4		87.6			98.0
<i>Ave - 2021</i>	114.0	118.4	118.8	100.9	99.1	98.7	108.0	119.9		87.3			95.9
2021													
January	104.6	107.3	117.9	93.1	93.0	99.5	104.1	103.7		86.3			98.2
February	107.3	111.1	117.9	92.3	93.9	97.8	106.4	107.9		86.6			96.5
March	109.9	114.5	117.9	92.3	95.5	99.5	106.9	112.0		86.0			96.0
April	110.7	114.4	117.9	92.4	96.3	99.2	105.4	116.1		86.0			96.2
May	112.1	115.8	118.9	92.4	96.8	98.4	106.9	119.4		87.4			96.3
June	112.4	116.5	119.2	93.8	97.0	97.7	106.9	119.3		88.5			94.3
July	115.7	120.9	119.2	109.1	98.1	98.0	106.9	120.9		88.0			95.4
August	118.3	124.4	119.2	108.9	99.4	98.7	110.6	123.7		87.4			95.8
September	118.4	123.7	119.2	108.6	99.9	99.1	110.6	126.6		87.4			95.6
October	118.2	123.5	119.2	109.2	102.7	98.7	110.6	125.4		88.1			95.5
November	118.1	122.4	119.2	109.4	105.0	98.5	110.6	127.2		88.1			95.6
December	122.7	126.7	119.2	109.4	112.0	99.6	110.6	137.1		88.1			95.7
2022													
January	121.6	125.9	119.2	111.2	110.8	100.8	110.6	133.0		88.1			95.9
<b><u>Percentage Change (P)</u></b>													
Jan 2022 over Dec 2021	-0.9%	-0.6%	0.0%	1.7%	-1.1%	1.2%	0.0%	-3.0%		0.0%			0.2%
Jan 2022 over Jan 2021	16.3%	17.4%	1.1%	19.5%	19.1%	1.3%	6.3%	28.3%		2.1%			-2.3%

Source : Samoa Bureau Statistics

(P) : Provisional figures

Note : n.a. Not applicable



**Table 5. IMPORTED ITEMS UNDERLYING INDEX**

**(Base Period : Average Prices February 2016 = 100)**

Group	All Items	Food and Non Alcoholic Beverages	Alcoholic Beverages, Tobacco and Narcotics	Clothing and Footwear	Housing, Water , Electricity, Gas and other Fuels	Furnishings, Household Equipment and Maintenance	Health	Transport	Communication	Recreation and Culture	Education	Restaurants	Miscellaneous goods and services
<b>Weights</b>	<b>401.2</b>	<b>269.1</b>	<b>n.a</b>	<b>15.2</b>	<b>24.2</b>	<b>26.9</b>	<b>2.5</b>	<b>23.0</b>	<b>n.a</b>	<b>5.6</b>	<b>n.a</b>	<b>n.a</b>	<b>34.7</b>
Ave - 2019	108.9	114.5		93.7	94.6	95.8	97.9	108.1		87.9			96.7
Ave - 2020	107.6	112.2		93.2	93.7	97.7	95.8	110.4		87.6			98.0
Ave - 2021	112.3	118.4		100.9	94.5	98.7	108.0	114.4		87.3			95.9
2021													
January	104.5	107.3		93.1	91.5	99.5	104.1	113.9		86.3			98.2
February	106.8	111.1		92.3	91.2	97.8	106.4	113.3		86.6			96.5
March	109.3	114.5		92.3	92.4	99.5	106.9	114.8		86.0			96.0
April	109.2	114.4		92.4	92.1	99.2	105.4	114.8		86.0			96.2
May	110.2	115.8		92.4	92.5	98.4	106.9	114.8		87.4			96.3
June	110.5	116.5		93.8	92.7	97.7	106.9	114.7		88.5			94.3
July	114.1	120.9		109.1	93.0	98.0	106.9	114.2		88.0			95.4
August	116.6	124.4		108.9	93.7	98.7	110.6	114.2		87.4			95.8
September	116.1	123.7		108.6	94.0	99.1	110.6	114.2		87.4			95.6
October	116.2	123.5		109.2	97.5	98.7	110.6	114.6		88.1			95.5
November	115.6	122.4		109.4	99.2	98.5	110.6	114.5		88.1			95.6
December	118.9	126.7		109.4	104.7	99.6	110.6	114.5		88.1			95.7
2021													
January	118.5	125.9		111.2	104.5	100.8	110.6	114.4		88.1			95.9
<b><u>Percentage Change (P)</u></b>													
Jan 2022													
over	-0.3%	-0.6%		1.7%	-0.2%	1.2%	0.0%	-0.1%		0.0%			0.2%
Dec 2021													
Jan 2022													
over	13.3%	17.4%		19.5%	14.2%	1.3%	6.3%	0.4%		2.1%			-2.3%
Jan 2021													

Source : Samoa Bureau Statistics

(P) : Provisional figures

Note : n.a. Not applicable

**Table 6. LOCAL GOODS COMPONENT OF THE CONSUMER PRICE INDEX**  
(Base Period : Average Prices February 2016 = 100)

Group	All Items	Food and Non Alcoholic Beverages	Alcoholic Beverages, Tobacco and Narcotics	Clothing and Footwear	Housing, Water, Electricity, Gas and other Fuels	Furnishings, Household Equipment and Maintenance	Health	Transport	Communication	Recreation and Culture	Education	Restaurants	Miscellaneous goods and services
<b>Weights</b>	<b>505.3</b>	<b>134.6</b>	<b>104.6</b>	<b>6.0</b>	<b>91.3</b>	<b>3.9</b>	<b>2.2</b>	<b>59.9</b>	<b>51.5</b>	<b>0.4</b>	<b>19.7</b>	<b>22.4</b>	<b>8.8</b>
Ave - 2019	105.5	107.3	116.5	93.8	93.2	100.3	102.5	102.3	104.2	100.0	113.5	103.3	102.3
Ave - 2020	105.3	106.8	120.7	94.2	87.6	100.3	103.0	100.1	104.2	100.0	114.9	109.4	102.3
Ave - 2021	105.9	105.6	122.2	93.8	90.3	100.3	103.0	99.6	107.1	100.0	109.9	111.2	102.3
2021													
January	102.8	100.4	122.7	94.4	80.7	100.3	103.0	99.9	104.2	100.0	114.9	111.0	102.3
February	104.0	103.1	122.3	93.6	85.2	100.3	103.0	99.9	104.2	100.0	109.4	111.0	102.3
March	104.3	104.3	122.3	93.6	85.2	100.3	103.0	100.0	104.2	100.0	109.4	111.0	102.3
April	103.5	100.5	122.3	93.6	86.5	100.3	103.0	100.0	104.2	100.0	109.4	111.0	102.3
May	103.4	99.9	122.1	92.9	86.5	100.3	103.0	100.0	104.2	100.0	109.4	111.0	102.3
June	106.1	102.7	122.2	92.9	97.3	100.3	103.0	100.0	104.2	100.0	109.4	111.0	102.3
July	106.5	104.1	122.3	94.2	97.3	100.3	103.0	100.0	104.2	100.0	109.4	111.0	102.3
August	107.3	106.7	121.9	94.2	98.6	100.3	103.0	100.0	104.2	100.0	109.4	111.4	102.3
September	107.3	106.4	122.1	94.2	98.6	100.3	103.0	100.0	104.2	100.0	109.4	111.4	102.3
October	109.1	107.3	122.2	94.2	100.5	100.3	103.0	100.0	115.9	100.0	109.4	111.4	102.3
November	108.1	115.7	122.1	94.2	83.9	100.3	103.0	98.2	115.9	100.0	109.4	111.7	102.3
December	108.2	115.8	122.3	94.2	83.9	100.3	103.0	97.9	115.9	100.0	109.4	111.7	102.3
2021													
January (P)	108.3	115.1	122.2	94.2	83.9	100.3	103.0	98.2	115.8	100.0	109.4	118.3	102.3
<b><u>Percentage Change (P)</u></b>													
Jan 2022 over Dec 2021	0.1%	-0.6%	0.0%	0.0%	0.0%	0.0%	0.0%	0.3%	0.0%	0.0%	0.0%	6.0%	0.0%
Jan 2022 over Jan 2021	5.3%	14.6%	-0.4%	-0.2%	3.9%	0.0%	0.0%	-1.6%	11.1%	0.0%	-4.7%	6.6%	0.0%

Source : Samoa Bureau Statistics

(P) : Provisional figures

**Table 7. LOCAL ITEMS UNDERLYING INDEX**

(Base Period : Average Prices February 2016 = 100)

Group	All Items	Food and Non Alcoholic Beverages	Alcoholic Beverages, Tobacco and Narcotics	Clothing and Footwear	Housing, Water , Electricity, Gas and other Fuels	Furnishings, Household Equipment and Maintenance	Health	Transport	Communication	Recreation and Culture	Education	Restaurants	Miscellaneous goods and services
<b>Weights</b>	<b>185.5</b>	<b>76.1</b>	<b>n.a</b>	<b>6.0</b>	<b>n.a</b>	<b>3.9</b>	<b>1.0</b>	<b>3.4</b>	<b>51.5</b>	<b>n.a</b>	<b>12.3</b>	<b>22.4</b>	<b>8.8</b>
Ave - 2019	103.6	101.6		93.8		100.3	105.2	108.6	104.2		118.5	103.3	102.3
Ave - 2020	104.6	101.9		94.2		100.3	106.3	108.6	104.2		120.6	109.4	102.3
Ave - 2021	105.1	102.1		93.8		100.3	106.3	108.6	107.1		112.7	111.2	102.3
2021													
January	105.2	102.8		94.4		100.3	106.3	108.6	104.2		120.6	111.0	102.3
February	104.5	102.8		93.6		100.3	106.3	108.6	104.2		111.9	111.0	102.3
March	104.6	103.0		93.6		100.3	106.3	108.6	104.2		111.9	111.0	102.3
April	104.7	103.2		93.6		100.3	106.3	108.6	104.2		111.9	111.0	102.3
May	103.7	100.9		92.9		100.3	106.3	108.6	104.2		111.9	111.0	102.3
June	103.9	101.3		92.9		100.3	106.3	108.6	104.2		111.9	111.0	102.3
July	104.0	101.3		94.2		100.3	106.3	108.6	104.2		111.9	111.0	102.3
August	104.0	101.4		94.2		100.3	106.3	108.6	104.2		111.9	111.4	102.3
September	104.1	101.6		94.2		100.3	106.3	108.6	104.2		111.9	111.4	102.3
October	107.5	101.9		94.2		100.3	106.3	108.6	115.9		111.9	111.4	102.3
November	107.7	102.3		94.2		100.3	106.3	108.6	115.9		111.9	111.7	102.3
December	107.8	102.5		94.2		100.3	106.3	108.6	115.9		111.9	111.7	102.3
2021													
January (P)	108.9	103.0		94.2		100.3	106.3	114.4	115.8		111.9	118.3	102.3
<b>Percentage Change (P)</b>													
Jan 2022													
over	1.0%	0.5%		0.0%		0.0%	0.0%	5.3%	0.0%		0.0%	6.0%	0.0%
Dec 2021													
Jan 2022													
over	3.5%	0.2%		-0.2%		0.0%	0.0%	5.3%	11.1%		-7.2%	6.6%	0.0%
Jan 2021													

Source : Samoa Bureau Statistics

(P) : Provisional figures

Note : n.a. Not applicable

**Table 8. CONSUMER PRICE INDEX (AVERAGE ANNUAL INFLATION RATE).**

**(Base Period : Average Prices February 2016 = 100)**

Group	All Items	Food and Non Alcoholic Beverages	Alcoholic Beverages, Tobacco and Narcotics	Clothing and Footwear	Housing, Water , Electricity, Gas and other Fuels	Furnishings, Household Equipment, and Maintenance	Health	Transport	Communication	Recreation and Culture	Education	Restaurants	Miscellaneous goods and services
<i>Weights</i>	<b>1000.0</b>	<b>403.7</b>	<b>128.4</b>	<b>21.2</b>	<b>119.6</b>	<b>30.8</b>	<b>4.6</b>	<b>148.5</b>	<b>51.5</b>	<b>6.1</b>	<b>19.7</b>	<b>22.4</b>	<b>43.5</b>
2019	1.0	1.0	4.1	-1.6	4.4	-1.6	3.1	-3.2	0.9	-4.2	2.8	4.4	0.0
2020	-1.6	-1.5	2.7	-0.3	-5.7	1.8	-0.9	-6.1	0.0	-0.3	1.2	5.9	1.0
2021	3.1	3.4	1.3	5.8	3.1	0.9	6.5	7.0	2.8	-0.3	-4.3	1.7	-1.6
2021													
January	-2.4	-2.6	2.6	-0.2	-7.8	2.1	-0.6	-7.2	-0.1	-0.3	0.9	5.5	1.1
February	-3.2	-3.5	2.5	-0.1	-9.4	2.0	-0.2	-8.1	-0.2	-0.4	0.2	5.0	1.2
March	-3.8	-4.4	2.5	-0.1	-10.4	2.0	0.2	-8.9	-0.2	-0.6	-0.5	4.8	1.2
April	-3.9	-4.8	2.5	0.0	-9.6	1.8	0.5	-9.0	-0.1	-0.5	-1.2	4.6	1.0
May	-3.6	-4.8	2.4	0.0	-8.8	1.3	0.9	-7.6	-0.1	-0.4	-1.6	4.4	0.7
June	-3.0	-4.6	2.4	0.3	-7.1	1.1	1.8	-5.0	-0.1	-0.4	-2.0	4.2	0.1
July	-2.4	-4.3	2.2	1.2	-4.9	1.1	2.6	-2.8	0.0	-0.4	-2.4	4.0	-0.4
August	-1.7	-3.8	2.0	2.1	-2.6	1.0	3.6	-1.1	0.0	-0.5	-2.8	3.8	-0.7
September	-0.8	-2.7	1.8	2.9	-0.9	1.1	4.6	0.8	0.0	-0.7	-3.1	3.1	-1.0
October	0.5	-0.8	1.6	3.8	1.1	1.0	5.7	2.6	0.9	-0.7	-3.5	2.5	-1.2
November	1.8	1.2	1.4	4.7	2.1	1.0	6.4	4.7	1.9	-0.5	-3.9	1.9	-1.4
December	3.1	3.4	1.3	5.8	3.1	0.9	6.5	7.0	2.8	-0.3	-4.3	1.7	-1.6
2021													
January (P)	4.5	5.3	1.2	6.9	5.3	0.7	6.5	9.2	3.7	0.1	-4.7	2.0	-1.9

Source : Samoa Bureau Statistics

(P) : Provisional figures

**Table 9 Consumer Price Index (Percentage change and Average Annual Inflation)**

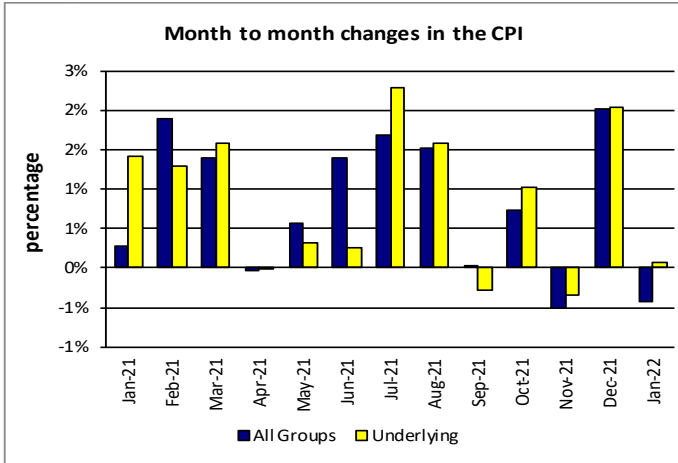
(Base Period: Average Prices February 2016 = 100)

Period	ALL ITEMS	Percentage change over previous month	Last 12 months over previous months	ALL ITEMS UNDERLYING	Percentage change over previous month	Last 12 months over previous months	LOCAL COMPONENT	Percentage change over previous month	Last 12 months over previous months	IMPORTED COMPONENT	Percentage change over previous month	Last 12 months over previous months
2019	108.3	-	1.0	107.2	-	0.5	105.5	-	2.8	111.1	-	-0.7
2020	106.6	-	-1.6	106.6	-	-0.5	105.3	-	-0.2	107.9	-	-2.9
2021	109.9	-	3.1	110.1	-	3.2	105.9	-	0.6	114.0	-	5.7
2021												
January	103.7	0.3	-2.4	104.7	1.4	-1.1	102.8	-1.2	-0.9	104.6	1.8	-3.9
February	105.6	1.9	-3.2	106.1	1.3	-1.7	104.0	1.2	-1.5	107.3	2.6	-4.8
March	107.1	1.4	-3.8	107.8	1.6	-2.1	104.3	0.3	-1.9	109.9	2.5	-5.6
April	107.1	0.0	-3.9	107.8	0.0	-2.3	103.5	-0.8	-2.0	110.7	0.7	-5.8
May	107.7	0.6	-3.6	108.1	0.3	-2.3	103.4	-0.2	-1.9	112.1	1.3	-5.2
June	109.2	1.4	-3.0	108.4	0.3	-2.1	106.1	2.6	-1.7	112.4	0.2	-4.3
July	111.0	1.7	-2.4	110.9	2.3	-1.9	106.5	0.4	-1.4	115.7	2.9	-3.3
August	112.7	1.5	-1.7	112.6	1.6	-1.5	107.3	0.8	-1.1	118.3	2.2	-2.3
September	112.8	0.0	-0.8	112.3	-0.3	-0.8	107.3	0.0	-0.8	118.4	0.1	-0.8
October	113.6	0.7	0.5	113.5	1.0	0.6	109.1	1.7	-0.4	118.2	-0.1	1.3
November	113.0	-0.5	1.8	113.1	-0.4	1.9	108.1	-0.9	0.2	118.1	-0.1	3.4
December	115.3	2.0	3.1	115.4	2.0	3.2	108.2	0.0	0.6	122.7	3.9	5.7
2021												
January (P)	114.8	-0.4	4.5	115.4	0.1	4.2	108.3	0.1	1.4	121.6	-0.9	7.6

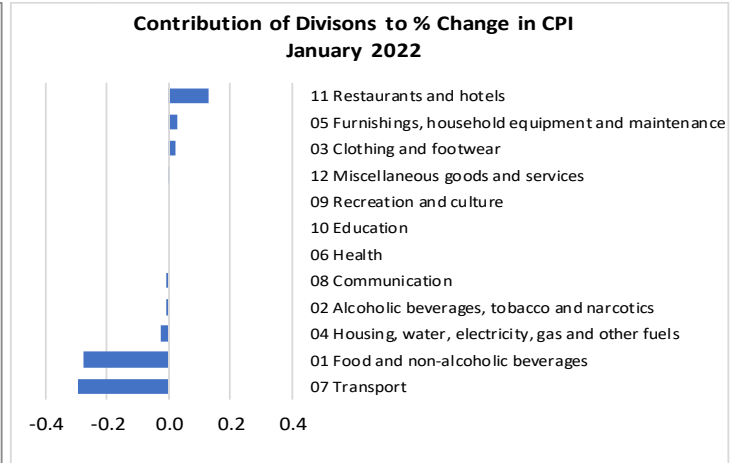
Source : Samoa Bureau Statistics

(P) : Provisional figures

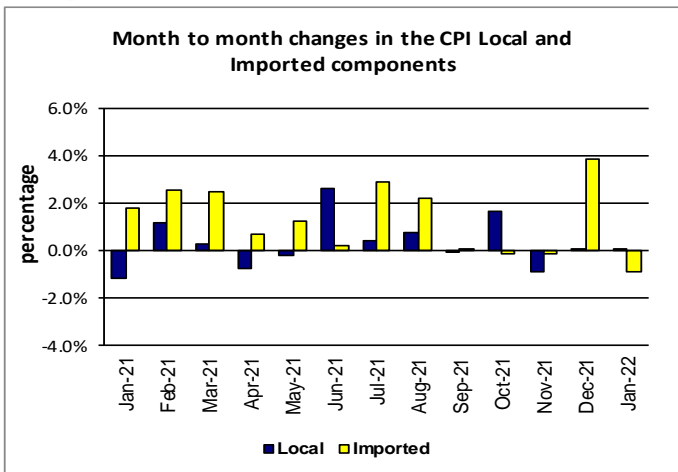
**Graph.5**



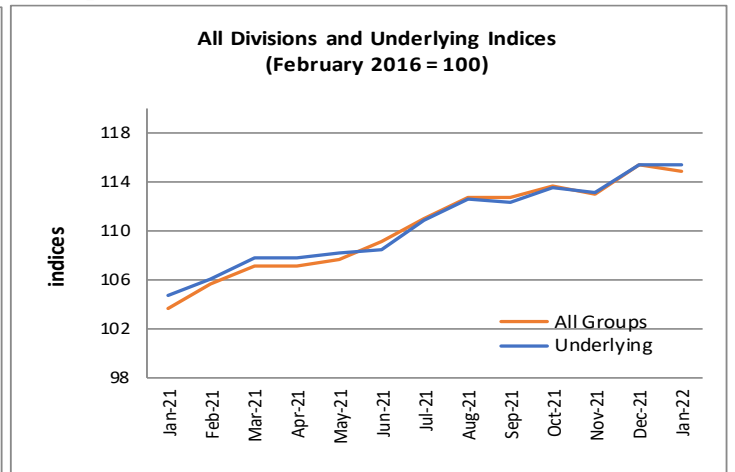
**Graph.6**



**Graph.7**



**Graph.8**



**Graph.9**

