

Please address all correspondence
To Government Statistician
In reply, please quote the file reference



File Ref: CPI 6/2022

GOVERNMENT OF SAMOA

SAMOA BUREAU OF STATISTICS

CONSUMER PRICE INDEX JUNE 2022

Key findings:

The Consumer Price Index for June 2022 increased by 3.2 percent compared to the previous month.

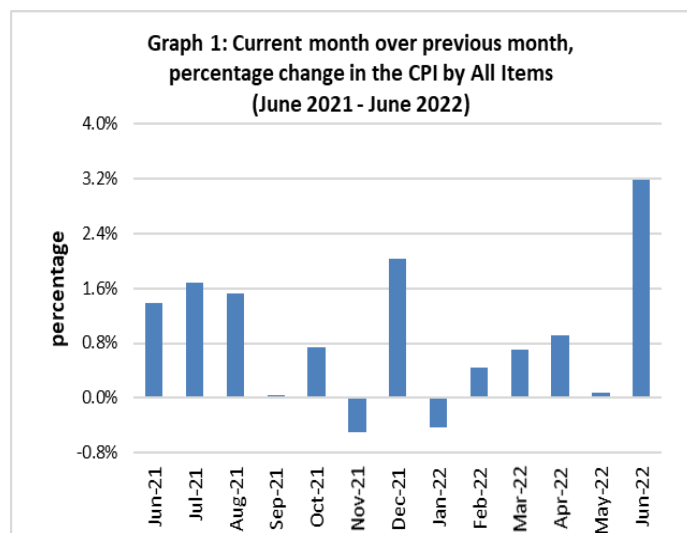
- The Restaurants index increased by 8.5 percent.
- The Transport index increased by 7.5 percent.
- The Average Annual Inflation for the year ended June 2022 was 8.8 percent.

The CPI went up by 10.9 percent from June 2021.

SUMMARY

The Consumer Price Index for June 2022 increased 3.2 percent compared to May 2022 and further went up by 10.9 percent in comparison to June 2021. This was mainly influenced by the increase in the Imported Goods Component by 4.2 percent from the previous month, as a result of higher prices for fuel, imported food, refrigerator, futon mattress and hygienic products such as washing soap.

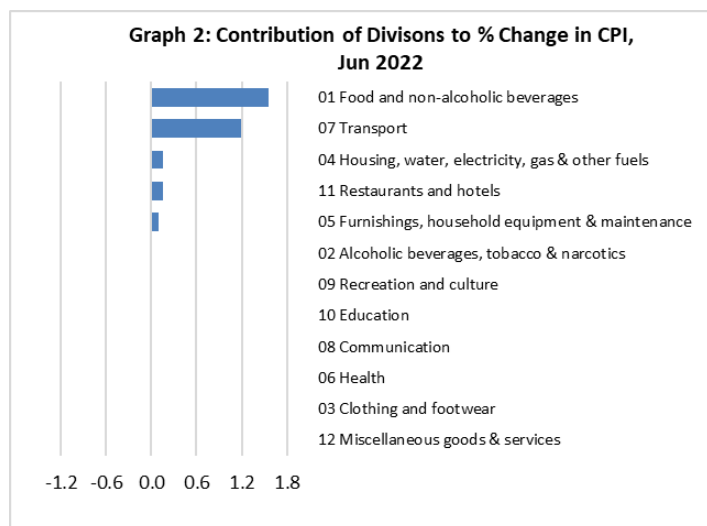
The Local Goods Component also contributed to the increase when it went up by 2.0 percent as a result of higher prices for local food, meals and airline fare (Apia-Auckland-Apia). Graph 1 shows the month to month percentage changes in the Consumer Price Index by all Divisions from June 2021 to June 2022.



Source : Samoa Bureau of Statistics

Total All Divisions Contribution

As depicted in Graph 2, Food & Non Alcoholic Beverages was the largest contributor to the 3.2 percent rise in the Consumer Price Index in June 2022, with prices up 3.6 percent from the previous month. The most significant drivers of this within the group were butter (up 9.9 percent), chicken leg quarter (up 8.0 percent) and bread (up 5.6 percent). The next largest contributor was Transport, which rose 7.5 percent. The greatest drivers of this increase were airline fares (Apia-Auckland-Apia) and petrol, which rose 16.0 percent and 12.0 percent respectively from the previous month. Housing and Restaurants also contributed to the increase, up 1.6 percent and 8.5 percent in the respective order.

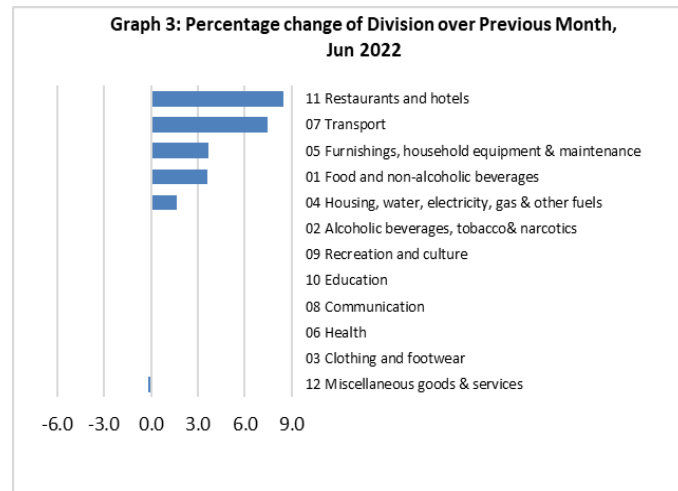


Source : Samoa Bureau of Statistics

Consumer Price Index (% Change)

Graph 3 shows the percentage change for all Divisions (groups) in June 2022 in comparison to May 2022. Restaurant had the largest increase of 8.5 percent followed by Transport which rose 7.5 percent. Other groups such as Furnishing & Household Equipment & Maintenance, Food & Non Alcoholic Beverages, Housing, Water, Electricity Gas & Other Fuel and Alcoholic Beverages & Tobacco recorded increases of 3.7, 3.6, 1.6 and 0.1 percent respectively except for Miscellaneous Goods & Services which decreased 0.1 percent.

No changes were recorded for the Clothing & Footwear, Health, Communication, Recreation & Culture, and Education indices.



Source : Samoa Bureau of Statistics

Imported Goods Component

The Imported goods component of the Consumer Price Index registered an increase of 4.2 percent when compared to the previous month. This increase was mainly due to higher prices recorded for fuel (petrol, diesel and kerosene), food, washing soap, futon mattress and refrigerator.

Local Goods Component

Increased prices recorded for local food, meals and airline fare (Apia-Auckland-Apia) have resulted in the 2.0 percent increase in the local goods component.

Restaurants Index

The Restaurants index recorded an increase of 8.5 percent due to the rise in prices for the mostly consumed meals such as fish & chips, chicken & chips, curry & chopsuey, steam rice & chicken and so forth, a reflection of the rise in food prices.

Transport Index

The increases in fuel (petrol and diesel) and airline fares (Apia-Auckland-Apia) led to the 7.5 percent increase in the Transport index.

Furnishings, Household Equipment, and Maintenance Index

Increased prices recorded for washing powder, washing soap, mosquito coil, futon mattress, refrigerator and kerosene stove led to the 3.7 percent increase in the Furnishing, Household, Equipment & Maintenance index.

Food and Non Alcoholic Beverages Index

An increase of 3.6 percent in the Food & Non Alcoholic Beverages index was a reflection of higher prices recorded for chicken leg quarter, vegetable oil, butter, milk (devondale & anchor), ice cream, fresh fish (piece), mutton neck, sausage, salted beef, coffee, bread and round pancake.

Housing, Water, Electricity, Gas and other Fuels Index

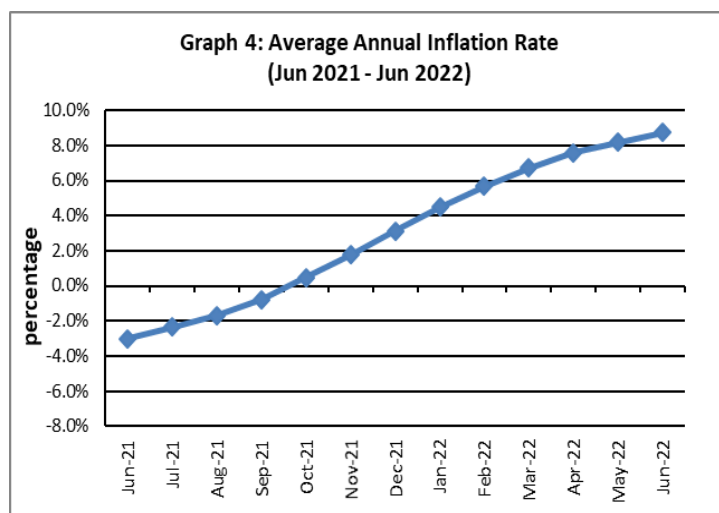
Housing, Water, Electricity, Gas & Other Fuel index rose 1.6 percent due to the increase in Kerosene and cement prices.

Underlying Indices ^{1/}

The All Items Underlying Index for June 2022 registered an increase of 2.7 percent when compared to May 2022. It also increased by 11.2 percent when compared to June 2021. The Local Items Underlying Index recorded an increase of 3.4 percent. The Imported Items Underlying Index also increased by 2.4 percent.

Inflation Rate

The average annual inflation rate for the year ended June 2022 was 8.8 percent. This was the biggest increase in the last 13 fiscal years ending June. The annual inflation for the year ending June 2021 was negative 3.0 percent. Presented in Graph 4 is the average annual inflation rate from June 2021 to June 2022.



Source : Samoa Bureau of Statistics

The attached Tables and Graphs provide the users with more detailed analysis.

Technical Notes:

The Consumer Price (CPI) measures the rate of inflation for Samoa. It is designed to measure the change in prices for the goods purchased by households in Samoa. The CPI measures the change in prices by comparing the prices for a basket of goods and services at the collection period with the price for the same goods in a base period.

The basket of goods that is priced is based on the average expenditures of households as recorded in the Household Income and Expenditure Survey (HIES). The HIES survey identifies how much households spend on different items. The more households spend on an item on average, the more important it is to the price index, and the higher the weight in the index.

^{1/} Monthly movements in the 'headline' CPI series can be volatile. This volatility reflects price changes in particular items that may be due, among other factors, to fluctuations in commodity markets and agricultural conditions, policy changes, or seasonal or infrequent price resetting.

Underlying inflation is a measure of inflation that excludes certain items that face volatile price movements. Underlying inflation eliminates products that can have temporary price shocks because these shocks can diverge from the overall trend of inflation and give a false measure of inflation.

SAMOA BUREAU OF STATISTICS

Economic Statistics Division
FMFM II Building, Level 1
P O Box 1151
Apia, Samoa

Phone: (685) 62014/62015
Fax: (685) 24675
E-mail: info.stats@sbs.gov.ws
Website: www.sbs.gov.ws

Date of release: 15th June 2022

The next Consumer Price Index will be released on 11th July 2022.

Va'asiliiga Ailepata Simanu
ACTING GOVERNMENT STATISTICIAN/(CEO)

Table 1. CONSUMER PRICE INDEX.

(Base Period : Average Prices February 2016 = 100)

Group	All Items	Food and Non Alcoholic Beverages	Alcoholic Beverages, Tobacco and Narcotics	Clothing and Footwear	Housing, Water, Electricity, Gas and other Fuels	Furnishings, Household Equipment, and Maintenance	Health	Transport	Communication	Recreation and Culture	Education	Restaurants	Miscellaneous goods and services
<i>Weights</i>	1000.0	403.7	128.4	21.2	119.6	30.8	4.6	148.5	51.5	6.1	19.7	22.4	43.5
Ave - 2019	108.3	112.1	116.8	93.8	95.0	96.4	100.0	111.3	104.2	88.7	113.5	103.3	97.8
Ave - 2020	106.6	110.4	120.0	93.5	89.6	98.1	99.2	104.4	104.2	88.5	114.9	109.4	98.8
Ave - 2021	109.9	114.1	121.6	98.9	92.4	98.9	105.7	111.7	107.1	88.2	109.9	111.2	97.2
2021													
June	109.2	111.9	121.7	93.5	97.2	98.0	105.0	111.5	104.2	89.3	109.4	111.0	95.9
July	111.0	115.3	121.8	104.9	97.5	98.3	105.0	112.5	104.2	88.8	109.4	111.0	96.8
August	112.7	118.5	121.4	104.8	98.8	98.9	107.0	114.1	104.2	88.3	109.4	111.4	97.1
September	112.8	117.9	121.6	104.5	98.9	99.2	107.0	115.9	104.2	88.3	109.4	111.4	96.9
October	113.6	118.1	121.6	104.9	101.0	98.9	107.0	115.1	115.9	89.0	109.4	111.4	96.9
November	113.0	120.1	121.6	105.1	88.9	98.7	107.0	115.5	115.9	89.0	109.4	111.7	96.9
December	115.3	123.1	121.7	105.1	90.5	99.7	107.0	121.3	115.9	89.0	109.4	111.7	97.1
2022													
January	114.8	122.3	121.7	106.4	90.2	100.7	107.0	119.0	115.8	89.0	109.4	118.3	97.2
February	115.3	123.8	122.1	108.6	90.3	102.0	109.9	117.0	115.8	89.0	109.4	118.3	97.6
March	116.2	124.0	122.6	108.9	90.6	103.2	101.5	120.8	115.8	91.8	109.4	118.3	99.1
April	117.2	124.5	122.4	108.8	92.3	102.5	99.9	125.2	115.8	91.8	109.4	118.3	99.8
May	117.3	124.5	122.6	109.4	92.4	102.5	95.1	125.4	115.8	91.8	109.4	118.3	101.4
June (P)	121.0	129.0	122.6	109.3	93.9	106.3	95.1	134.8	115.8	91.8	109.4	128.3	101.2
<u>Percentage Change (P)</u>													
Jun 2022													
over	3.2%	3.6%	0.1%	0.0%	1.6%	3.7%	0.0%	7.5%	0.0%	0.0%	0.0%	8.5%	-0.1%
May 2022													
Jun 2022													
over	10.9%	15.2%	0.8%	16.9%	-3.4%	8.4%	-9.4%	20.9%	11.1%	2.8%	0.0%	15.6%	5.6%
Jun 2021													

Source : Samoa Bureau Statistics

(P) : Provisional figures

Table 2. ALL ITEMS UNDERLYING INDEX

(Base Period : Average Prices February 2016 = 100)

Group	All Items	Food and Non Alcoholic Beverages	Alcoholic Beverages, Tobacco and Narcotics	Clothing and Footwear	Housing, Water, Electricity, Gas and other Fuels	Furnishings, Household Equipment, and Maintenance	Health	Transport	Communication	Recreation and Culture	Education	Restaurants	Miscellaneous goods and services
<i>Weights</i>	586.7	345.3	<i>n.a</i>	21.2	24.2	30.8	3.5	26.4	51.5	5.6	12.3	22.4	43.5
Ave - 2019	107.2	111.6		93.8	94.6	96.4	100.1	108.1	104.2	87.9	118.5	103.3	97.8
Ave - 2020	106.6	109.9		93.5	93.7	98.1	98.9	110.1	104.2	87.6	120.6	109.4	98.8
Ave - 2021	110.1	114.8		98.9	94.5	98.9	107.5	113.6	107.1	87.3	112.7	111.2	97.2
2021													
June	108.4	113.2		93.5	92.7	98.0	106.7	113.9	104.2	88.5	111.9	111.0	95.9
July	110.9	116.6		104.9	93.0	98.3	106.7	113.5	104.2	88.0	111.9	111.0	96.8
August	112.6	119.4		104.8	93.7	98.9	109.3	113.5	104.2	87.4	111.9	111.4	97.1
September	112.3	118.8		104.5	94.0	99.2	109.3	113.5	104.2	87.4	111.9	111.4	96.9
October	113.5	118.8		104.9	97.5	98.9	109.3	113.8	115.9	88.1	111.9	111.4	96.9
November	113.1	117.9		105.1	99.2	98.7	109.3	113.8	115.9	88.1	111.9	111.7	96.9
December	115.4	121.4		105.1	104.7	99.7	109.3	113.8	115.9	88.1	111.9	111.7	97.1
2022													
January	115.4	120.9		106.4	104.5	100.7	109.3	114.4	115.8	88.1	111.9	118.3	97.2
February	116.6	122.4		108.6	105.4	102.0	113.2	114.5	115.8	88.1	111.9	118.3	97.6
March	116.6	122.1		108.9	105.1	103.2	102.0	114.5	115.8	91.2	111.9	118.3	99.1
April	117.4	123.1		108.8	111.5	102.5	99.9	114.5	115.8	91.2	111.9	118.3	99.8
May	117.3	122.8		109.4	111.8	102.5	93.5	114.5	115.8	91.2	111.9	118.3	101.4
June (P)	120.5	127.2		109.3	111.5	106.3	93.5	114.5	115.8	91.2	111.9	128.3	101.2

Percentage Change (P)

Jun 2022 over May 2022	2.7%	3.6%		0.0%	-0.3%	3.7%	0.0%	0.0%	0.0%	0.0%	0.0%	8.5%	-0.1%
Jun 2022 over Jun 2021	11.2%	12.4%		16.9%	20.3%	8.4%	-12.3%	0.6%	11.1%	3.0%	0.0%	15.6%	5.6%

Source : Samoa Bureau Statistics

(P) : Provisional figures

Note : n.a. Not applicable

Table 3. AVERAGE RETAIL PRICES OF SELECTED COMMODITIES

Commodities	Wt	Unit	2021			2022		
			Apr	May	June	Apr	May	June (P)
01 Food and non-alcoholic beverages								
Leg Quarters Chicken	62.2	kg	4.22	4.39	4.49	5.04	4.88	5.27
Raw Sugar	21.3	kg	2.57	2.67	2.78	2.99	3.01	2.85
Bread	17.2	loaf	1.64	1.64	1.64	1.65	1.66	1.75
Corned Beef (a)	15.9	340 grms	8.45	8.58	8.55	8.77	9.02	9.02
Taro	15.2	kg	1.63	1.69	1.88	3.38	3.36	3.98
Re-packed medium grain rice	13.4	kg	2.64	2.75	2.73	3.11	3.14	3.14
Prepacked medium grain rice (a)	13.4	907 grms	2.88	2.77	2.77	2.80	2.80	2.88
Canned fish between \$3.00 and \$3.99 Natural Oil	12.7	425 grms	3.31	3.26	3.25	3.31	3.17	3.22
Bongo	10.2	20 grms	0.83	0.81	0.81	0.82	0.82	0.84
Keke Saina Biscuits (a)	9.2	pkt 10	6.08	6.17	6.17	6.21	6.21	6.29
Ice Cream (a)	9.2	2 ltr	15.60	15.33	15.52	16.85	16.85	17.02
Ramen	9.0	85 grms	1.04	1.06	1.06	1.08	1.11	1.11
Fish (Piece)	7.9	kg	16.20	20.64	24.18	25.00	23.90	24.78
Butter	7.7	454 grms	16.07	16.07	16.06	16.66	16.80	18.31
Round Pancake (a)	7.5	sml	0.15	0.15	0.15	0.15	0.15	0.20
Mutton Flaps	6.6	kg	24.37	25.14	22.54	25.48	26.05	25.32
Canned fish \$4:00 or over N/Oil	6.4	425 grms	4.52	4.73	4.73	4.72	4.70	4.67
Canned fish under \$3.00 in N/Oil	6.4	425 grms	2.63	2.52	2.48	2.87	3.00	3.12
Wings Turkey	6.3	kg	8.78	8.95	8.83	12.83	12.46	12.64
Fish (string)	6.0	kg	10.81	9.17	10.18	10.66	12.11	11.25
Fish (large)	6.0	kg	15.38	14.44	15.86	19.41	20.29	18.94
02 Alcoholic beverages, tobacco and narcotics								
Lager Beer	37.9	355 mls	3.66	3.64	3.65	3.73	3.76	3.76
Pall Mall Filter Cigarettes (Red)	24.3	20 rolls	14.60	14.60	14.60	14.60	14.60	14.60
Pall Mall Menthol Cigarettes (Green)	24.3	20 rolls	14.60	14.60	14.60	14.60	14.60	14.60
Beer (a)	16.3	330 mls	3.50	3.50	3.50	3.54	3.56	3.60
Tobacco (a)	12.6	30 grms	15.00	15.00	15.00	15.00	15.00	15.00
03 Clothing and footwear								
Uniform le Faitaga College boys	4.3	size 8-10	29.67	29.67	29.67	38.33	38.33	38.33
Uniform Pa'ave (a)	3.7	size 7	29.67	29.67	29.67	42.67	42.67	42.67
04 Housing, water, electricity, gas and other fuels								
Electricity Cashpower	50.6	kw h	0.50	0.50	0.67	0.58	0.58	0.58
Reservoir treated Water	28.5	15-40 m3	1.67	1.67	1.67	1.34	1.34	1.34
Liquid gas	15.8	9kg	59.00	59.00	59.25	72.05	72.55	72.05
Government house Rent	12.2	2 b/room	650.00	650.00	650.00	650.00	650.00	650.00

05 Furnishings, household equipment and routine household maintenance

Washing powder (a)	6.3	200 grms	1.93	1.93	1.87	2.00	2.00	2.06
Soap yellow Washing soap	5.9	bar	2.77	2.68	2.72	3.05	3.05	3.24
Mosquito coil	4.4	10 coil	1.33	1.33	1.33	1.38	1.38	1.45

06 Health

Amoxicillin 500mg tablets (a)	2.5	20 tablets	7.83	8.00	8.00	7.77	7.10	7.10
Hospital Charge	1.1	per night	22.50	22.50	22.50	22.50	22.50	22.50

07 Transport

Petrol	60.8	1 ltr	2.53	2.63	2.63	3.33	3.34	3.74
Taxi Fare P.O to Motootua Hosp	8.2	per trip	4.80	4.80	4.80	4.80	4.80	4.80
Taxi Fares P.O to Malua	8.2	per trip	31.30	31.30	31.30	31.30	31.30	31.30
Taxi Fares P.O to Falefa	8.2	per trip	43.20	43.20	43.20	43.20	43.20	43.20
Air Fares Fagalii Pago Fagalii	6.8	return trip	395.00	395.00	395.00	395.00	395.00	395.00
Air Fares Apia Auckland Apia	6.8	1 month	1257.87	1257.87	1257.87	1257.87	1257.87	1459.44

08 Communication

Calling per minute Rate cell phone (a)	10.02	per minute	0.43	0.43	0.43	0.43	0.43	0.43
Internet data bundles per mb Rate (a)	10.02	per mb	0.25	0.25	0.25	0.25	0.25	0.25
Calling per minute Rate cell phone (a)	10.02	per minute	0.44	0.44	0.44	0.44	0.44	0.44
Internet data bundles per mb Rate (a)	10.02	per mb	0.20	0.20	0.20	0.32	0.32	0.32

09 Recreation and culture

Television LCD 32" (a)	2.30	LCD 32"	852.83	852.83	886.17	852.83	852.83	852.83
Exercise Book w arw ick	1.44	1B4	1.37	1.45	1.45	1.62	1.62	1.62
Laptop (a)	1.33	each	2898.60	2898.60	2898.60	2898.60	2898.60	2898.60

10 Education

Fees PTA Primary Y Urban Registration fees (a)	7.23	Year 6	72.50	72.50	72.50	72.50	72.50	72.50
Fees PTA Secondary Y Urban Registration fees (5.11	Year 10	58.00	58.00	58.00	58.00	58.00	58.00
Fees Tertiary NUS registration School Fees	3.79	registration	322.00	322.00	322.00	322.00	322.00	322.00
Fees Secondary Y Examination Fees (a)	3.61	Y12-13	25.50	25.50	25.50	25.50	25.50	25.50

11 Restaurants and hotels

Fish & Chip Meal	7.79	1 serve	10.08	10.08	10.08	10.17	10.17	10.75
Curry & Chopsuey Meal	4.87	1 serve	4.00	4.00	4.00	4.67	4.67	5.33
Chicken & Chips Meal (a)	4.87	1 serve	10.29	10.29	10.29	10.43	10.43	11.21
Steam rice & chicken Meal (a)	4.87	1 serve	5.00	5.00	5.00	5.50	5.50	5.83

12 Miscellaneous goods and services

Paper Sofan deluxe ply Toilet Paper	8.52	250 sheets	1.00	1.00	0.93	1.09	1.13	1.13
Hair Gel	4.59	1124 ml	4.76	4.76	4.76	4.66	5.10	4.81
Price for Storage of remains (a)	4.41	per day	60.00	60.00	60.00	60.00	60.00	60.00
Basic Casket (a)	4.41	each	1966.67	1966.67	1966.67	1966.67	1966.67	1966.67
Standard Embalming (a)	4.41	1 person	1500.00	1500.00	1500.00	1500.00	1500.00	1500.00
Toilet soap (a)	4.38	90g	1.93	1.93	1.93	1.95	1.95	2.03
Diapers (a)	4.19	5kg-10kg	7.60	7.89	7.89	7.51	7.51	7.46

Source : Samoa Bureau Statistics

(a) : New commodity from February 2016

(P) : Provisional figures

Note : Please note unit of conversion was in pound's (lb's) but been converted into kilograms (kg)

Table 4. IMPORTED GOODS COMPONENT OF THE CONSUMER PRICE INDEX
(Base Period : Average Prices February 2016 = 100)

Group	All Items	Food and Non Alcoholic Beverages	Alcoholic Beverages, Tobacco and Narcotics	Clothing and Footwear	Housing, Water , Electricity, Gas and other Fuels	Furnishings, Household Equipment and Maintenance	Health	Transport	Communication	Recreation and Culture	Education	Restaurants	Miscellaneous goods and services
<i>Weights</i>	494.7	269.1	23.8	15.2	28.3	26.9	2.5	88.6	<i>n.a</i>	5.6	<i>n.a</i>	<i>n.a</i>	34.7
<i>Ave - 2019</i>	111.1	114.5	118.3	93.7	100.8	95.8	97.9	117.3		87.9			96.7
<i>Ave - 2020</i>	107.9	112.2	117.1	93.2	96.0	97.7	95.8	107.4		87.6			98.0
<i>Ave - 2021</i>	114.0	118.4	118.8	100.9	99.1	98.7	108.0	119.9		87.3			95.9
2021													
June	112.4	116.5	119.2	93.8	97.0	97.7	106.9	119.3		88.5			94.3
July	115.7	120.9	119.2	109.1	98.1	98.0	106.9	120.9		88.0			95.4
August	118.3	124.4	119.2	108.9	99.4	98.7	110.6	123.7		87.4			95.8
September	118.4	123.7	119.2	108.6	99.9	99.1	110.6	126.6		87.4			95.6
October	118.2	123.5	119.2	109.2	102.7	98.7	110.6	125.4		88.1			95.5
November	118.1	122.4	119.2	109.4	105.0	98.5	110.6	127.2		88.1			95.6
December	122.7	126.7	119.2	109.4	112.0	99.6	110.6	137.1		88.1			95.7
2022													
January	121.6	125.9	119.2	111.2	110.8	100.8	110.6	133.0		88.1			95.9
February	122.4	128.0	119.7	114.3	110.9	102.2	116.1	129.7		88.1			96.4
March	123.6	127.7	119.7	114.7	112.4	103.6	100.1	136.0		91.2			98.3
April	126.0	128.9	119.7	114.5	119.5	102.8	97.2	143.5		91.2			99.2
May	125.8	128.2	118.5	115.4	119.8	102.8	88.1	143.8		91.2			101.2
June (P)	131.1	132.3	118.4	115.3	125.1	107.1	88.1	158.2		91.2			101.0
<u>Percentage Change (P)</u>													
Jun 2022													
over	4.2%	3.1%	-0.1%	-0.1%	4.4%	4.2%	0.0%	10.1%		0.0%			-0.2%
May 2022													
Jun 2022													
over	16.6%	13.5%	-0.7%	22.9%	29.0%	9.6%	-17.5%	32.7%		3.0%			7.1%
Jun 2021													

Source : Samoa Bureau Statistics

(P) : Provisional figures

Note : n.a. Not applicable

Table 5. IMPORTED ITEMS UNDERLYING INDEX

(Base Period : Average Prices February 2016 = 100)

Group	All Items	Food and Non Alcoholic Beverages	Alcoholic Beverages, Tobacco and Narcotics	Clothing and Footwear	Housing, Water , Electricity, Gas and other Fuels	Furnishings, Household Equipment and Maintenance	Health	Transport	Communication	Recreation and Culture	Education	Restaurants	Miscellaneous goods and services
Weights	401.2	269.1	n.a	15.2	24.2	26.9	2.5	23.0	n.a	5.6	n.a	n.a	34.7
Ave - 2019	108.9	114.5		93.7	94.6	95.8	97.9	108.1		87.9			96.7
Ave - 2020	107.6	112.2		93.2	93.7	97.7	95.8	110.4		87.6			98.0
Ave - 2021	112.3	118.4		100.9	94.5	98.7	108.0	114.4		87.3			95.9
2021													
June	110.5	116.5		93.8	92.7	97.7	106.9	114.7		88.5			94.3
July	114.1	120.9		109.1	93.0	98.0	106.9	114.2		88.0			95.4
August	116.6	124.4		108.9	93.7	98.7	110.6	114.2		87.4			95.8
September	116.1	123.7		108.6	94.0	99.1	110.6	114.2		87.4			95.6
October	116.2	123.5		109.2	97.5	98.7	110.6	114.6		88.1			95.5
November	115.6	122.4		109.4	99.2	98.5	110.6	114.5		88.1			95.6
December	118.9	126.7		109.4	104.7	99.6	110.6	114.5		88.1			95.7
2022													
January	118.5	125.9		111.2	104.5	100.8	110.6	114.4		88.1			95.9
February	120.3	128.0		114.3	105.4	102.2	116.1	114.6		88.1			96.4
March	120.2	127.7		114.7	105.1	103.6	100.1	114.6		91.2			98.3
April	121.4	128.9		114.5	111.5	102.8	97.2	114.6		91.2			99.2
May	121.2	128.2		115.4	111.8	102.8	88.1	114.6		91.2			101.2
June (P)	124.1	132.3		115.3	111.5	107.1	88.1	114.6		91.2			101.0
<u>Percentage Change (P)</u>													
Jun 2022 over May 2022	2.4%	3.1%		-0.1%	-0.3%	4.2%	0.0%	0.0%		0.0%			-0.2%
Jun 2022 over Jun 2021	12.3%	13.5%		22.9%	20.3%	9.6%	-17.5%	-0.1%		3.0%			7.1%

Source : Samoa Bureau Statistics

(P) : Provisional figures

Note : n.a. Not applicable

Table 6. LOCAL GOODS COMPONENT OF THE CONSUMER PRICE INDEX
(Base Period : Average Prices February 2016 = 100)

Group	All Items	Food and Non Alcoholic Beverages	Alcoholic Beverages, Tobacco and Narcotics	Clothing and Footwear	Housing, Water, Electricity, Gas and other Fuels	Furnishings, Household Equipment and Maintenance	Health	Transport	Communication	Recreation and Culture	Education	Restaurants	Miscellaneous goods and services
Weights	505.3	134.6	104.6	6.0	91.3	3.9	2.2	59.9	51.5	0.4	19.7	22.4	8.8
Ave - 2019	105.5	107.3	116.5	93.8	93.2	100.3	102.5	102.3	104.2	100.0	113.5	103.3	102.3
Ave - 2020	105.3	106.8	120.7	94.2	87.6	100.3	103.0	100.1	104.2	100.0	114.9	109.4	102.3
Ave - 2021	105.9	105.6	122.2	93.8	90.3	100.3	103.0	99.6	107.1	100.0	109.9	111.2	102.3
2021													
June	106.1	102.7	122.2	92.9	97.3	100.3	103.0	100.0	104.2	100.0	109.4	111.0	102.3
July	106.5	104.1	122.3	94.2	97.3	100.3	103.0	100.0	104.2	100.0	109.4	111.0	102.3
August	107.3	106.7	121.9	94.2	98.6	100.3	103.0	100.0	104.2	100.0	109.4	111.4	102.3
September	107.3	106.4	122.1	94.2	98.6	100.3	103.0	100.0	104.2	100.0	109.4	111.4	102.3
October	109.1	107.3	122.2	94.2	100.5	100.3	103.0	100.0	115.9	100.0	109.4	111.4	102.3
November	108.1	115.7	122.1	94.2	83.9	100.3	103.0	98.2	115.9	100.0	109.4	111.7	102.3
December	108.2	115.8	122.3	94.2	83.9	100.3	103.0	97.9	115.9	100.0	109.4	111.7	102.3
2022													
January	108.3	115.1	122.2	94.2	83.9	100.3	103.0	98.2	115.8	100.0	109.4	118.3	102.3
February	108.4	115.4	122.7	94.2	83.9	100.5	103.0	98.2	115.8	100.0	109.4	118.3	102.3
March	108.9	116.6	123.3	94.2	83.9	100.5	103.0	98.2	115.8	100.0	109.4	118.3	102.3
April	108.6	115.8	123.1	94.2	83.9	100.5	103.0	98.2	115.8	100.0	109.4	118.3	102.3
May	109.0	116.9	123.5	94.2	83.9	100.5	103.0	98.2	115.8	100.0	109.4	118.3	102.3
June (P)	111.2	122.4	123.6	94.2	84.2	100.5	103.0	100.1	115.8	100.0	109.4	128.3	102.3
<u>Percentage Change (P)</u>													
Jun 2022													
over	2.0%	4.7%	0.1%	0.0%	0.4%	0.0%	0.0%	1.9%	0.0%	0.0%	0.0%	8.5%	0.0%
May 2022													
Jun 2022													
over	4.9%	19.2%	1.1%	1.4%	-13.5%	0.2%	0.0%	0.1%	11.1%	0.0%	0.0%	15.6%	0.0%
Jun 2021													

Source : Samoa Bureau Statistics

(P) : Provisional figures

Table 7. LOCAL ITEMS UNDERLYING INDEX

(Base Period : Average Prices February 2016 = 100)

Group	All Items	Food and Non Alcoholic Beverages	Alcoholic Beverages, Tobacco and Narcotics	Clothing and Footwear	Housing, Water, Electricity, Gas and other Fuels	Furnishings, Household Equipment and Maintenance	Health	Transport	Communication	Recreation and Culture	Education	Restaurants	Miscellaneous goods and services
Weights	185.5	76.1	n.a	6.0	n.a	3.9	1.0	3.4	51.5	n.a	12.3	22.4	8.8
Ave - 2019	103.6	101.6		93.8		100.3	105.2	108.6	104.2		118.5	103.3	102.3
Ave - 2020	104.6	101.9		94.2		100.3	106.3	108.6	104.2		120.6	109.4	102.3
Ave - 2021	105.1	102.1		93.8		100.3	106.3	108.6	107.1		112.7	111.2	102.3
2021													
June	103.9	101.3		92.9		100.3	106.3	108.6	104.2		111.9	111.0	102.3
July	104.0	101.3		94.2		100.3	106.3	108.6	104.2		111.9	111.0	102.3
August	104.0	101.4		94.2		100.3	106.3	108.6	104.2		111.9	111.4	102.3
September	104.1	101.6		94.2		100.3	106.3	108.6	104.2		111.9	111.4	102.3
October	107.5	101.9		94.2		100.3	106.3	108.6	115.9		111.9	111.4	102.3
November	107.7	102.3		94.2		100.3	106.3	108.6	115.9		111.9	111.7	102.3
December	107.8	102.5		94.2		100.3	106.3	108.6	115.9		111.9	111.7	102.3
2022													
January	108.9	103.0		94.2		100.3	106.3	114.4	115.8		111.9	118.3	102.3
February	108.7	102.6		94.2		100.5	106.3	114.4	115.8		111.9	118.3	102.3
March	108.7	102.6		94.2		100.5	106.3	114.4	115.8		111.9	118.3	102.3
April	108.7	102.6		94.2		100.5	106.3	114.4	115.8		111.9	118.3	102.3
May	109.0	103.5		94.2		100.5	106.3	114.4	115.8		111.9	118.3	102.3
June (P)	112.7	109.5		94.2		100.5	106.3	114.4	115.8		111.9	128.3	102.3
<u>Percentage Change (P)</u>													
Jun 2022 over May 2022	3.4%	5.9%		0.0%		0.0%	0.0%	0.0%	0.0%		0.0%	8.5%	0.0%
Jun 2022 over Jun 2021	8.5%	8.1%		1.4%		0.2%	0.0%	5.3%	11.1%		0.0%	15.6%	0.0%

Source : Samoa Bureau Statistics

(P) : Provisional figures

Note : n.a. Not applicable

Table 8. CONSUMER PRICE INDEX (AVERAGE ANNUAL INFLATION RATE).

(Base Period : Average Prices February 2016 = 100)

Group	All Items	Food and Non Alcoholic Beverages	Alcoholic Beverages, Tobacco and Narcotics	Clothing and Footwear	Housing, Water, Electricity, Gas and other Fuels	Furnishings, Household Equipment, and Maintenance	Health	Transport	Communication	Recreation and Culture	Education	Restaurants	Miscellaneous goods and services
<i>Weights</i>	1000.0	403.7	128.4	21.2	119.6	30.8	4.6	148.5	51.5	6.1	19.7	22.4	43.5
2019	1.0	1.0	4.1	-1.6	4.4	-1.6	3.1	-3.2	0.9	-4.2	2.8	4.4	0.0
2020	-1.6	-1.5	2.7	-0.3	-5.7	1.8	-0.9	-6.1	0.0	-0.3	1.2	5.9	1.0
2021	3.1	3.4	1.3	5.8	3.1	0.9	6.5	7.0	2.8	-0.3	-4.3	1.7	-1.6
2021													
June	-3.0	-4.6	2.4	0.3	-7.1	1.1	1.8	-5.0	-0.1	-0.4	-2.0	4.2	0.1
July	-2.4	-4.3	2.2	1.2	-4.9	1.1	2.6	-2.8	0.0	-0.4	-2.4	4.0	-0.4
August	-1.7	-3.8	2.0	2.1	-2.6	1.0	3.6	-1.1	0.0	-0.5	-2.8	3.8	-0.7
September	-0.8	-2.7	1.8	2.9	-0.9	1.1	4.6	0.8	0.0	-0.7	-3.1	3.1	-1.0
October	0.5	-0.8	1.6	3.8	1.1	1.0	5.7	2.6	0.9	-0.7	-3.5	2.5	-1.2
November	1.8	1.2	1.4	4.7	2.1	1.0	6.4	4.7	1.9	-0.5	-3.9	1.9	-1.4
December	3.1	3.4	1.3	5.8	3.1	0.9	6.5	7.0	2.8	-0.3	-4.3	1.7	-1.6
2022													
January	4.5	5.3	1.2	6.9	5.3	0.7	6.5	9.2	3.7	0.1	-4.7	2.0	-1.9
February	5.7	7.0	1.1	8.4	6.6	1.0	6.5	11.0	4.7	0.4	-4.3	2.4	-1.9
March	6.7	8.5	1.0	10.0	7.8	1.2	5.8	12.5	5.6	1.1	-4.0	2.7	-1.7
April	7.6	10.0	0.9	11.5	7.8	1.3	5.1	13.8	6.5	1.6	-3.6	3.0	-1.4
May	8.2	11.0	0.8	13.1	7.9	1.7	3.8	14.1	7.4	1.9	-3.2	3.4	-0.9
June (P)	8.8	12.2	0.6	14.5	6.3	2.4	2.4	14.6	8.4	2.0	-2.8	4.5	-0.1

Source : Samoa Bureau Statistics

(P) : Provisional figures

Table 9 Consumer Price Index (Percentage change and Average Annual Inflation)

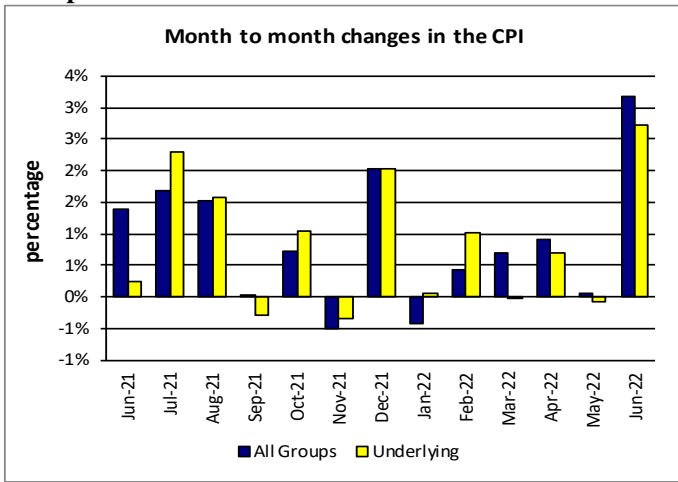
(Base Period: Average Prices February 2016 = 100)

Period	CPI ALL ITEMS	Percentage change over previous month	Last 12 months over previous 12 months	UNDERLYING ALL ITEMS	Percentage change over previous month	Last 12 months over previous 12 months	LOCAL COMPONENT	Percentage change over previous month	Last 12 months over previous 12 months	IMPORTED COMPONENT	Percentage change over previous month	Last 12 months over previous 12 months
2019	108.3	-	1.0	107.2	-	0.5	105.5	-	2.8	111.1	-	-0.7
2020	106.6	-	-1.6	106.6	-	-0.5	105.3	-	-0.2	107.9	-	-2.9
2021	109.9	-	3.1	110.1	-	3.2	105.9	-	0.6	114.0	-	5.7
2021												
June	109.2	1.4	-3.0	108.4	0.3	-2.1	106.1	2.6	-1.7	112.4	0.2	-4.3
July	111.0	1.7	-2.4	110.9	2.3	-1.9	106.5	0.4	-1.4	115.7	2.9	-3.3
August	112.7	1.5	-1.7	112.6	1.6	-1.5	107.3	0.8	-1.1	118.3	2.2	-2.3
September	112.8	0.0	-0.8	112.3	-0.3	-0.8	107.3	0.0	-0.8	118.4	0.1	-0.8
October	113.6	0.7	0.5	113.5	1.0	0.6	109.1	1.7	-0.4	118.2	-0.1	1.3
November	113.0	-0.5	1.8	113.1	-0.4	1.9	108.1	-0.9	0.2	118.1	-0.1	3.4
December	115.3	2.0	3.1	115.4	2.0	3.2	108.2	0.0	0.6	122.7	3.9	5.7
2022												
January	114.8	-0.4	4.5	115.4	0.1	4.2	108.3	0.1	1.4	121.6	-0.9	7.6
February	115.3	0.4	5.7	116.6	1.0	5.3	108.4	0.2	2.0	122.4	0.7	9.3
March	116.2	0.7	6.7	116.6	0.0	6.2	108.9	0.4	2.7	123.6	1.0	10.8
April	117.2	0.9	7.6	117.4	0.7	7.0	108.6	-0.3	3.1	126.0	2.0	12.1
May	117.3	0.1	8.2	117.3	-0.1	7.6	109.0	0.4	3.6	125.8	-0.2	12.7
June (P)	121.0	3.2	8.8	120.5	2.7	8.4	111.2	2.0	3.9	131.1	4.2	13.6

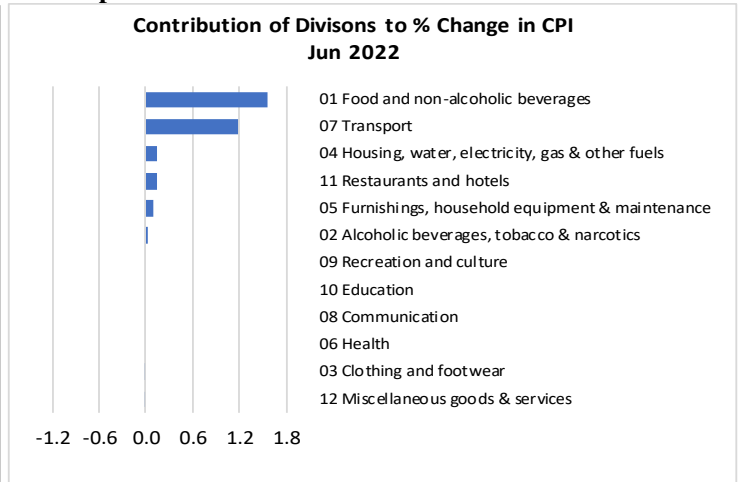
Source : Samoa Bureau Statistics

(P) : Provisional figures

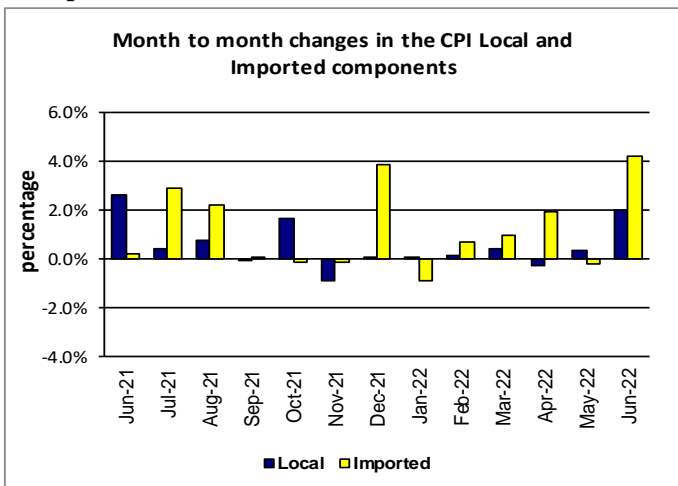
Graph.5



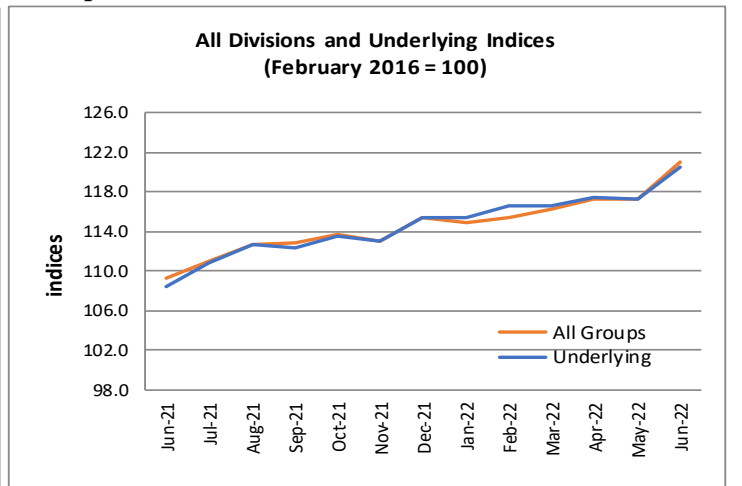
Graph.6



Graph.7



Graph.8



Graph.9

