

Please address all correspondence  
To Government Statistician  
In reply, please quote the file reference



File Ref: CPI 3/2022

GOVERNMENT OF SAMOA

## SAMOA BUREAU OF STATISTICS

# CONSUMER PRICE INDEX MARCH 2022

### Key findings:

The Consumer Price Index for March 2022 increased by 0.7 percent compared to the previous month.

- The Transport index increased by 3.2 percent.
- The Recreation & Culture index also increased by 3.2 percent.
- The Health index decreased by 7.7 percent.
- The Average Annual Inflation for the year ended March 2022 was 6.7 percent.

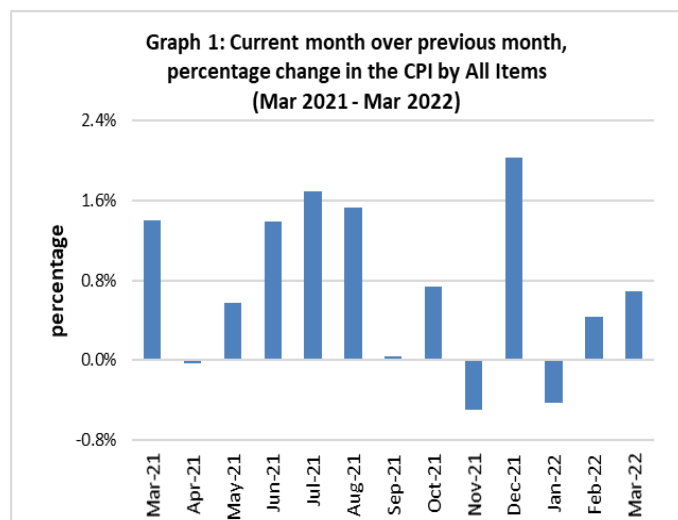
The CPI rose 8.4 percent from March 2021.

### SUMMARY

The Consumer Price Index for March 2022 was 0.7 percent higher than February 2022, and was 8.4 percent higher than March 2021.

The increase of the Imported Goods Component by 1.0 percent from the previous month was due to higher prices for fuel, exercise book, toilet paper, diapers, cement, washing soap and bush knife which were also the main contributors to the increase of 0.7 percent in the All Items Consumer Price Index.

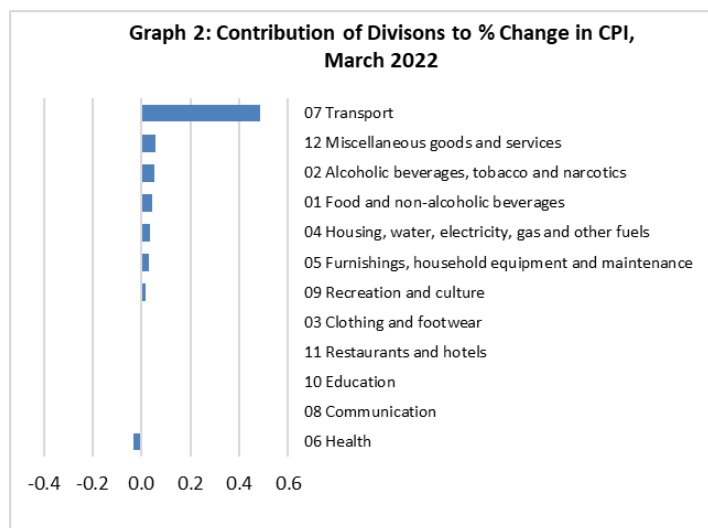
The Local Goods Component also registered an increase of 0.4 percent from the previous month. Graph 1 shows the month to month percentage changes in the Consumer Price Index by all Divisions from March 2021 to March 2022.



Source : Samoa Bureau of Statistics

## Total All Divisions Contribution

As depicted in Graph 2, Transport, Miscellaneous Good & Services, Alcoholic Beverages & Tobacco and Food & Non Alcoholic Beverages divisions were the main contributors to the overall increase of 0.7 percent in the All Division Consumer Price Index.

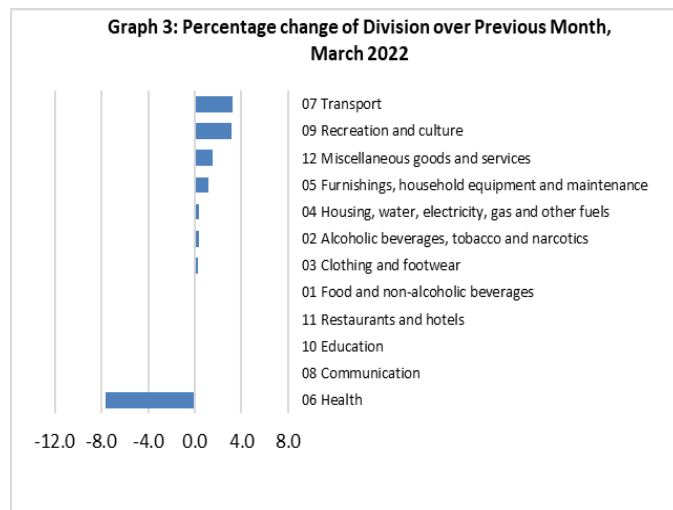


Source : Samoa Bureau of Statistics

## Consumer Price Index (% Change)

The 0.7 percent increase in the Overall Index was mainly due to an increase of 3.2 percent in the Transport index. The Recreation & Culture, Miscellaneous Good & Services and Furnishing & Household Equipment & Maintenance indices showed increases in the respective order of 3.2, 1.5 and 1.2 percent. Housing, Water, Electricity Gas & Other Fuel and Alcoholic Beverages & Tobacco indices both registered increases of 0.4 percent each, while slight increases of 0.3 and 0.1 percent in the Clothing & Footwear and Food & Non Alcoholic Beverages indices. On the contrary, Health index fell by 7.7 percent.

No changes were recorded for the Communication, Education and Restaurants indices. Graphically presented in Graph 3 is the March 2022 percentage change for all divisions from February 2022.



Source : Samoa Bureau of Statistics

## Imported Goods Component

The Imported Goods Component of the Consumer Price Index registered an increase of 1.0 percent when compared to the previous month. This increase was mainly due to higher prices recorded for fuel (petrol, diesel and kerosene), exercise book, toilet paper, diapers, cement, washing soap and bush knife.

## Local Goods Component

Increased prices recorded for local food and beer have resulted in the 0.4 percent increase in the local Goods Component.

## Transport Index

Higher prices recorded for fuel (petrol and diesel) is reflected in the 3.2 percent increase in the Transport index.

## Recreation and Culture Index

The Recreation & Culture index recorded an increase of 3.2 percent due to the rise in price recorded for exercise book.

## Miscellaneous Goods and Services Index

The 1.5 percent increase in the Miscellaneous Goods & Services index was a result of higher prices recorded for toilet paper, diapers and tooth paste.

## Furnishings, Household Equipment, and Maintenance Index

Increased prices recorded for washing soap, mosquito coil and bush knife led to the 1.2 percent increase in the Furnishing, Household, Equipment & Maintenance index.

## Alcoholic Beverages & Tobacco Index

Beer and Samoan kava prices rose, influenced by higher price for Alcoholic Beverages & Tobacco index (up 0.4 percent)

## Housing, Water, Electricity, Gas and other Fuels Index

An increase of 0.4 percent in the Housing, Water, Electricity, Gas & Other Fuel index was a reflection of higher prices recorded for kerosene and cement.

## Health Index

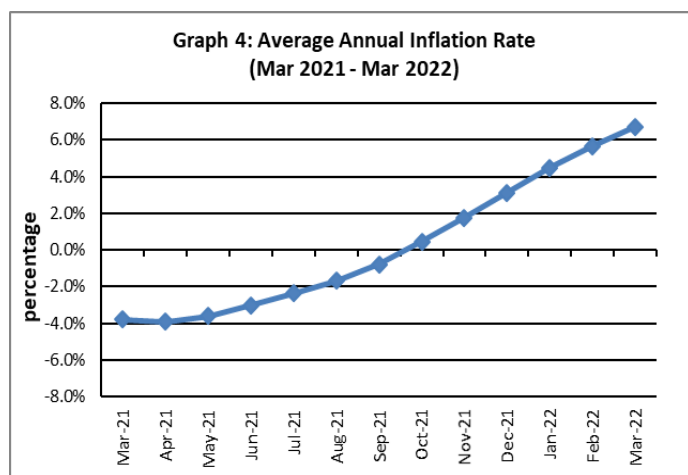
The 7.7 percent decrease in the Health index was a result of lower prices recorded for medicine (amoxicillin tablet).

## Underlying Indices <sup>1/</sup>

The All Items Underlying Index for March 2022 remained unchanged from February 2022, but increased by 8.2 percent when compared to March 2021. The Imported and Local Items Underlying Indices both registered no changes from the previous month.

## Inflation Rate

The average annual inflation rate for the year ended March 2022 was 6.7 percent. For the twelve months ending March 2021, the inflation rate was negative 3.8 percent. Presented in Graph 4 is the Average annual inflation rate (Mar 2021 - Mar 2022).



Source : Samoa Bureau of Statistics

The attached Tables and Graphs provide the users with more detailed analysis.

## Technical Notes:

The Consumer Price (CPI) measures the rate of inflation for Samoa. It is designed to measure the change in prices for the goods purchased by households in Samoa. The CPI measures the change in prices by comparing the prices for a basket of goods and services at the collection period with the price for the same goods in a base period.

The basket of goods that is priced is based on the average expenditures of households as recorded in the Household Income and Expenditure Survey (HIES). The HIES survey identifies how much households spend on different items. The more households spend on an item on average, the more important it is to the price index, and the higher the weight in the index.

<sup>1/</sup> Monthly movements in the 'headline' CPI series can be volatile. This volatility reflects price changes in particular items that may be due, among other factors, to fluctuations in commodity markets and agricultural conditions, policy changes, or seasonal or infrequent price resetting.

Underlying inflation is a measure of inflation that excludes certain items that face volatile price movements. Underlying inflation eliminates products that can have temporary price shocks because these shocks can diverge from the overall trend of inflation and give a false measure of inflation.

**SAMOA BUREAU OF STATISTICS**

Economic Statistics Division  
FMFM II Building, Level 1  
P O Box 1151  
Apia, Samoa

Phone: (685) 62014/62015  
Fax: (685) 24675  
E-mail: [info.stats@sbs.gov.ws](mailto:info.stats@sbs.gov.ws)  
Website: [www.sbs.gov.ws](http://www.sbs.gov.ws)

Date of release: 26<sup>th</sup> April 2022

The next Consumer Price Index will be released on 10<sup>th</sup> May 2022.

Papalii Benjamin Sila  
**ACTING GOVERNMENT STATISTICIAN/(CEO)**

**Table 1. CONSUMER PRICE INDEX.**

**(Base Period : Average Prices February 2016 = 100)**

Group	All Items	Food and Non Alcoholic Beverages	Alcoholic Beverages, Tobacco and Narcotics	Clothing and Footwear	Housing, Water, Electricity, Gas and other Fuels	Furnishings, Household Equipment, and Maintenance	Health	Transport	Communication	Recreation and Culture	Education	Restaurants	Miscellaneous goods and services
<i>Weights</i>	<b>1000.0</b>	<b>403.7</b>	<b>128.4</b>	<b>21.2</b>	<b>119.6</b>	<b>30.8</b>	<b>4.6</b>	<b>148.5</b>	<b>51.5</b>	<b>6.1</b>	<b>19.7</b>	<b>22.4</b>	<b>43.5</b>
Ave - 2019	108.3	112.1	116.8	93.8	95.0	96.4	100.0	111.3	104.2	88.7	113.5	103.3	97.8
Ave - 2020	106.6	110.4	120.0	93.5	89.6	98.1	99.2	104.4	104.2	88.5	114.9	109.4	98.8
Ave - 2021	109.9	114.1	121.6	98.9	92.4	98.9	105.7	111.7	107.1	88.2	109.9	111.2	97.2
2021													
March	107.1	111.1	121.5	92.7	87.6	99.6	105.0	107.1	104.2	87.0	109.4	111.0	97.3
April	107.1	109.8	121.5	92.7	88.8	99.3	104.3	109.6	104.2	87.0	109.4	111.0	97.4
May	107.7	110.5	121.5	92.5	88.9	98.6	105.0	111.5	104.2	88.3	109.4	111.0	97.5
June	109.2	111.9	121.7	93.5	97.2	98.0	105.0	111.5	104.2	89.3	109.4	111.0	95.9
July	111.0	115.3	121.8	104.9	97.5	98.3	105.0	112.5	104.2	88.8	109.4	111.0	96.8
August	112.7	118.5	121.4	104.8	98.8	98.9	107.0	114.1	104.2	88.3	109.4	111.4	97.1
September	112.8	117.9	121.6	104.5	98.9	99.2	107.0	115.9	104.2	88.3	109.4	111.4	96.9
October	113.6	118.1	121.6	104.9	101.0	98.9	107.0	115.1	115.9	89.0	109.4	111.4	96.9
November	113.0	120.1	121.6	105.1	88.9	98.7	107.0	115.5	115.9	89.0	109.4	111.7	96.9
December	115.3	123.1	121.7	105.1	90.5	99.7	107.0	121.3	115.9	89.0	109.4	111.7	97.1
2022													
January	114.8	122.3	121.7	106.4	90.2	100.7	107.0	119.0	115.8	89.0	109.4	118.3	97.2
February	115.3	123.8	122.1	108.6	90.3	102.0	109.9	117.0	115.8	89.0	109.4	118.3	97.6
March (P)	116.2	124.0	122.6	108.9	90.6	103.2	101.5	120.8	115.8	91.8	109.4	118.3	99.1
<b><u>Percentage Change (P)</u></b>													
Mar 2022													
over	0.7%	0.1%	0.4%	0.3%	0.4%	1.2%	-7.7%	3.2%	0.0%	3.2%	0.0%	0.0%	1.5%
Feb 2022													
Mar 2022													
over	8.5%	11.6%	0.9%	17.5%	3.4%	3.7%	-3.4%	12.7%	11.1%	5.5%	0.0%	6.6%	1.8%
Mar 2021													

Source : Samoa Bureau Statistics

(P) : Provisional figures

**Table 2. ALL ITEMS UNDERLYING INDEX**

(Base Period : Average Prices February 2016 = 100)

Group	All Items	Food and Non Alcoholic Beverages	Alcoholic Beverages, Tobacco and Narcotics	Clothing and Footwear	Housing, Water, Electricity, Gas and other Fuels	Furnishings, Household Equipment, and Maintenance	Health	Transport	Communication	Recreation and Culture	Education	Restaurants	Miscellaneous goods and services
<i>Weights</i>	<b>586.7</b>	<b>345.3</b>	<i>n.a</i>	<b>21.2</b>	<b>24.2</b>	<b>30.8</b>	<b>3.5</b>	<b>26.4</b>	<b>51.5</b>	<b>5.6</b>	<b>12.3</b>	<b>22.4</b>	<b>43.5</b>
Ave - 2019	107.2	111.6		93.8	94.6	96.4	100.1	108.1	104.2	87.9	118.5	103.3	97.8
Ave - 2020	106.6	109.9		93.5	93.7	98.1	98.9	110.1	104.2	87.6	120.6	109.4	98.8
Ave - 2021	110.1	114.8		98.9	94.5	98.9	107.5	113.6	107.1	87.3	112.7	111.2	97.2
2021													
March	107.8	111.9		92.7	92.4	99.6	106.7	114.0	104.2	86.0	111.9	111.0	97.3
April	107.8	111.9		92.7	92.1	99.3	105.7	114.0	104.2	86.0	111.9	111.0	97.4
May	108.1	112.5		92.5	92.5	98.6	106.7	114.0	104.2	87.4	111.9	111.0	97.5
June	108.4	113.2		93.5	92.7	98.0	106.7	113.9	104.2	88.5	111.9	111.0	95.9
July	110.9	116.6		104.9	93.0	98.3	106.7	113.5	104.2	88.0	111.9	111.0	96.8
August	112.6	119.4		104.8	93.7	98.9	109.3	113.5	104.2	87.4	111.9	111.4	97.1
September	112.3	118.8		104.5	94.0	99.2	109.3	113.5	104.2	87.4	111.9	111.4	96.9
October	113.5	118.8		104.9	97.5	98.9	109.3	113.8	115.9	88.1	111.9	111.4	96.9
November	113.1	117.9		105.1	99.2	98.7	109.3	113.8	115.9	88.1	111.9	111.7	96.9
December	115.4	121.4		105.1	104.7	99.7	109.3	113.8	115.9	88.1	111.9	111.7	97.1
2022													
January	115.4	120.9		106.4	104.5	100.7	109.3	114.4	115.8	88.1	111.9	118.3	97.2
February	116.6	122.4		108.6	105.4	102.0	113.2	114.5	115.8	88.1	111.9	118.3	97.6
March (P)	116.6	122.1		108.9	105.1	103.2	102.0	114.5	115.8	91.2	111.9	118.3	99.1
<b><u>Percentage Change (P)</u></b>													
Mar 2022													
over	0.0%	-0.2%		0.3%	-0.3%	1.2%	-9.9%	0.0%	0.0%	3.5%	0.0%	0.0%	1.5%
Feb 2022													
Mar 2022													
over	8.2%	9.1%		17.5%	13.8%	3.7%	-4.4%	0.5%	11.1%	6.0%	0.0%	6.6%	1.8%
Mar 2021													

Source : Samoa Bureau Statistics

(P) : Provisional figures

Note : n.a. Not applicable

**Table 3. AVERAGE RETAIL PRICES OF SELECTED COMMODITIES**

Commodities	Wt	Unit	2021			2022		
			Jan	Feb	Mar	Jan	Feb	Mar (P)
<b>01 Food and non-alcoholic beverages</b>								
Leg Quarters Chicken	62.2	kg	3.42	3.88	4.15	4.96	5.03	4.97
Raw Sugar	21.3	kg	2.51	2.53	2.57	2.96	3.12	2.99
Bread	17.2	loaf	1.64	1.64	1.64	1.64	1.64	1.65
Corned Beef (a)	15.9	340 grms	8.25	8.40	8.40	8.62	8.62	8.77
Taro	15.2	kg	1.71	1.64	1.71	3.46	3.64	3.40
Re-packed medium grain rice	13.4	kg	2.63	2.64	2.72	3.08	3.19	3.09
Prepacked medium grain rice (a)	13.4	907 grms	2.85	2.77	2.88	2.77	2.77	2.77
Canned fish betw een \$3.00 and \$3.99 Natural Oil	12.7	425 grms	3.41	3.30	3.34	3.19	3.22	3.31
Bongo	10.2	20 grms	0.83	0.83	0.83	0.83	0.83	0.82
Keke Saina Biscuits (a)	9.2	pkt 10	6.17	6.08	6.08	6.23	6.23	6.31
Ice Cream (a)	9.2	2 ltr	15.37	15.50	15.60	16.00	16.00	16.92
Ramen	9.0	85 grms	1.00	0.99	1.04	1.08	1.10	1.07
Fish (Piece)	7.9	kg	18.45	20.83	24.02	24.42	28.65	28.38
Butter	7.7	454 grms	15.76	15.76	15.80	16.36	16.36	16.37
Round Pancake (a)	7.5	sml	0.15	0.15	0.15	0.15	0.15	0.15
Mutton Flaps	6.6	kg	24.22	25.14	25.79	25.27	25.43	24.98
Canned fish \$4:00 or over N/Oil	6.4	425 grms	5.06	4.89	4.63	4.74	4.66	4.64
Canned fish under \$3.00 in N/Oil	6.4	425 grms	2.75	2.75	2.77	2.78	2.77	2.87
Wings Turkey	6.3	kg	7.94	8.19	8.69	8.78	8.95	8.83
Fish (string)	6.0	kg	10.06	10.24	9.67	10.81	9.17	10.18
Fish (large)	6.0	kg	15.87	16.25	16.36	15.38	14.44	15.86
<b>02 Alcoholic beverages, tobacco and narcotics</b>								
Lager Beer	37.9	355 mls	3.68	3.66	3.66	3.67	3.70	3.74
Pall Mall Filter Cigarettes (Red)	24.3	20 rolls	14.60	14.60	14.60	14.60	14.60	14.60
Pall Mall Menthol Cigarettes (Green)	24.3	20 rolls	14.60	14.60	14.60	14.60	14.60	14.60
Beer (a)	16.3	330 mls	3.50	3.50	3.49	3.56	3.56	3.56
Tobacco (a)	12.6	30 grms	15.00	15.00	15.00	15.00	15.00	15.00
<b>03 Clothing and footwear</b>								
Uniform le Faitaga College boys	4.3	size 8-10	29.67	29.67	29.67	37.67	38.33	38.33
Uniform Pa'ave (a)	3.7	size 7	31.00	29.67	29.67	39.33	42.67	42.67
<b>04 Housing, water, electricity, gas and other fuels</b>								
Electricity Cashpower er	50.6	kw h	0.48	0.48	0.48	0.58	0.58	0.58
Reservoir treated Water	28.5	15-40 m3	1.47	1.67	1.67	1.34	1.34	1.34
Liquid gas	15.8	9kg	59.00	59.00	59.25	65.50	66.00	66.00
Government house Rent	12.2	2 b/room	650.00	650.00	650.00	650.00	650.00	650.00

---

**05 Furnishings, household equipment and routine household maintenance**

Washing powder (a)	6.3	200 grms	1.88	1.79	1.88	1.98	2.04	2.00
Soap yellow Washing soap	5.9	bar	2.90	2.87	2.89	2.85	2.97	3.15
Mosquito coil	4.4	10 coil	1.33	1.33	1.33	1.33	1.33	1.35

**06 Health**

Amoxicillin 500mg tablets (a)	2.5	20 tablets	7.67	8.00	8.00	8.50	9.40	8.20
Hospital Charge	1.1	per night	22.50	22.50	22.50	22.50	22.50	22.50

**07 Transport**

Petrol	60.8	1 ltr	2.17	2.30	2.41	3.03	2.93	3.11
Taxi Fare P.O to Motootua Hosp	8.2	per trip	4.80	4.80	4.80	4.80	4.80	4.80
Taxi Fares P.O to Malua	8.2	per trip	31.30	31.30	31.30	31.30	31.30	31.30
Taxi Fares P.O to Falefa	8.2	per trip	43.20	43.20	43.20	43.20	43.20	43.20
Air Fares Fagalii Pago Fagalii	6.8	return trip	395.00	395.00	395.00	395.00	395.00	395.00
Air Fares Apia Auckland Apia	6.8	1 month	1257.87	1257.87	1257.87	1257.87	1257.87	1257.87

**08 Communication**

Calling per minute Rate cell phone (a)	10.02	per minute	0.43	0.43	0.43	0.43	0.43	0.43
Internet data bundles per mb Rate (a)	10.02	per mb	0.25	0.25	0.25	0.25	0.25	0.25
Calling per minute Rate cell phone (a)	10.02	per minute	0.44	0.44	0.44	0.44	0.44	0.44
Internet data bundles per mb Rate (a)	10.02	per mb	0.20	0.20	0.20	0.32	0.32	0.32

**09 Recreation and culture**

Television LCD 32" (a)	2.30	LCD 32"	852.83	861.00	852.83	852.83	852.83	852.83
Exercise Book w arwick	1.44	1B4	1.37	1.37	1.37	1.48	1.48	1.62
Laptop (a)	1.33	each	2938.60	2938.60	2898.60	2898.60	2898.60	2898.60

**10 Education**

Fees PTA Primary Y Urban Registration fees (a)	7.23	Year 6	82.50	72.50	72.50	72.50	72.50	72.50
Fees PTA Secondary Y Urban Registration fees (	5.11	Year 10	58.00	58.00	58.00	58.00	58.00	58.00
Fees Tertiary NUS registration School Fees	3.79	registration	322.00	322.00	322.00	322.00	322.00	322.00
Fees Secondary Y Examination Fees (a)	3.61	Y12-13	25.50	25.50	25.50	25.50	25.50	25.50

**11 Restaurants and hotels**

Fish & Chip Meal	7.79	1 serve	10.08	10.08	10.08	10.17	10.17	10.17
Curry & Chopsuey Meal	4.87	1 serve	4.00	4.00	4.00	4.67	4.67	4.67
Chicken & Chips Meal (a)	4.87	1 serve	10.29	10.29	10.29	10.43	10.43	10.43
Steam rice & chicken Meal (a)	4.87	1 serve	5.00	5.00	5.00	5.50	5.50	5.50

**12 Miscellaneous goods and services**

Paper Sofan deluxe ply Toilet Paper	8.52	250 sheets	1.05	1.00	0.99	1.00	1.00	1.06
Hair Gel	4.59	1124 ml	4.76	4.76	4.76	4.61	4.61	4.61
Price for Storage of remains (a)	4.41	per day	60.00	60.00	60.00	60.00	60.00	60.00
Basic Casket (a)	4.41	each	1966.67	1966.67	1966.67	1966.67	1966.67	1966.67
Standard Embalming (a)	4.41	1 person	1500.00	1500.00	1500.00	1500.00	1500.00	1500.00
Toilet soap (a)	4.38	90g	1.97	1.93	1.92	1.96	1.95	1.94
Diapers (a)	4.19	5kg-10kg	8.14	8.09	7.89	7.31	7.31	7.46

Source : Samoa Bureau Statistics

(a) : New commodity from February 2016

■ : Revised figures

(P) : Provisional figures

Note : Please note unit of conversion was in pound's (lb's) but been converted into kilograms (kg)



**Table 4. IMPORTED GOODS COMPONENT OF THE CONSUMER PRICE INDEX**  
(Base Period : Average Prices February 2016 = 100)

Group	All Items	Food and Non Alcoholic Beverages	Alcoholic Beverages, Tobacco and Narcotics	Clothing and Footwear	Housing, Water, Electricity, Gas and other Fuels	Furnishings, Household Equipment and Maintenance	Health	Transport	Communication	Recreation and Culture	Education	Restaurants	Miscellaneous goods and services
<i>Weights</i>	<b>494.7</b>	<b>269.1</b>	<b>23.8</b>	<b>15.2</b>	<b>28.3</b>	<b>26.9</b>	<b>2.5</b>	<b>88.6</b>	<i>n.a</i>	<b>5.6</b>	<i>n.a</i>	<i>n.a</i>	<b>34.7</b>
<i>Ave - 2019</i>	111.1	114.5	118.3	93.7	100.8	95.8	97.9	117.3		87.9			96.7
<i>Ave - 2020</i>	107.9	112.2	117.1	93.2	96.0	97.7	95.8	107.4		87.6			98.0
<i>Ave - 2021</i>	114.0	118.4	118.8	100.9	99.1	98.7	108.0	119.9		87.3			95.9
2021													
March	109.9	114.5	117.9	92.3	95.5	99.5	106.9	112.0		86.0			96.0
April	110.7	114.4	117.9	92.4	96.3	99.2	105.4	116.1		86.0			96.2
May	112.1	115.8	118.9	92.4	96.8	98.4	106.9	119.4		87.4			96.3
June	112.4	116.5	119.2	93.8	97.0	97.7	106.9	119.3		88.5			94.3
July	115.7	120.9	119.2	109.1	98.1	98.0	106.9	120.9		88.0			95.4
August	118.3	124.4	119.2	108.9	99.4	98.7	110.6	123.7		87.4			95.8
September	118.4	123.7	119.2	108.6	99.9	99.1	110.6	126.6		87.4			95.6
October	118.2	123.5	119.2	109.2	102.7	98.7	110.6	125.4		88.1			95.5
November	118.1	122.4	119.2	109.4	105.0	98.5	110.6	127.2		88.1			95.6
December	122.7	126.7	119.2	109.4	112.0	99.6	110.6	137.1		88.1			95.7
2022													
January	121.6	125.9	119.2	111.2	110.8	100.8	110.6	133.0		88.1			95.9
February	122.4	128.0	119.7	114.3	110.9	102.2	116.1	129.7		88.1			96.4
March (P)	123.6	127.7	119.7	114.7	112.4	103.6	100.1	136.0		91.2			98.3
<b><u>Percentage Change (P)</u></b>													
Mar 2022													
over	1.0%	-0.3%	0.0%	0.4%	1.4%	1.3%	-13.8%	4.9%		3.5%			1.9%
Feb 2022													
Mar 2022													
over	12.4%	11.5%	1.5%	24.3%	17.7%	4.2%	-6.3%	21.4%		6.0%			2.3%
Mar 2021													

Source : Samoa Bureau Statistics

(P) : Provisional figures

Note : n.a. Not applicable



**Table 5. IMPORTED ITEMS UNDERLYING INDEX**

**(Base Period : Average Prices February 2016 = 100)**

Group	All Items	Food and Non Alcoholic Beverages	Alcoholic Beverages, Tobacco and Narcotics	Clothing and Footwear	Housing, Water , Electricity, Gas and other Fuels	Furnishings, Household Equipment and Maintenance	Health	Transport	Communication	Recreation and Culture	Education	Restaurants	Miscellaneous goods and services
<b>Weights</b>	<b>401.2</b>	<b>269.1</b>	<b>n.a</b>	<b>15.2</b>	<b>24.2</b>	<b>26.9</b>	<b>2.5</b>	<b>23.0</b>	<b>n.a</b>	<b>5.6</b>	<b>n.a</b>	<b>n.a</b>	<b>34.7</b>
Ave - 2019	108.9	114.5		93.7	94.6	95.8	97.9	108.1		87.9			96.7
Ave - 2020	107.6	112.2		93.2	93.7	97.7	95.8	110.4		87.6			98.0
Ave - 2021	112.3	118.4		100.9	94.5	98.7	108.0	114.4		87.3			95.9
2021													
March	109.3	114.5		92.3	92.4	99.5	106.9	114.8		86.0			96.0
April	109.2	114.4		92.4	92.1	99.2	105.4	114.8		86.0			96.2
May	110.2	115.8		92.4	92.5	98.4	106.9	114.8		87.4			96.3
June	110.5	116.5		93.8	92.7	97.7	106.9	114.7		88.5			94.3
July	114.1	120.9		109.1	93.0	98.0	106.9	114.2		88.0			95.4
August	116.6	124.4		108.9	93.7	98.7	110.6	114.2		87.4			95.8
September	116.1	123.7		108.6	94.0	99.1	110.6	114.2		87.4			95.6
October	116.2	123.5		109.2	97.5	98.7	110.6	114.6		88.1			95.5
November	115.6	122.4		109.4	99.2	98.5	110.6	114.5		88.1			95.6
December	118.9	126.7		109.4	104.7	99.6	110.6	114.5		88.1			95.7
2022													
January	118.5	125.9		111.2	104.5	100.8	110.6	114.4		88.1			95.9
February	120.3	128.0		114.3	105.4	102.2	116.1	114.6		88.1			96.4
March (P)	120.2	127.7		114.7	105.1	103.6	100.1	114.6		91.2			98.3
<b><u>Percentage Change (P)</u></b>													
Mar 2022 over Feb 2022	0.0%	-0.3%		0.4%	-0.3%	1.3%	-13.8%	0.0%		3.5%			1.9%
Mar 2022 over Mar 2021	10.0%	11.5%		24.3%	13.8%	4.2%	-6.3%	-0.2%		6.0%			2.3%

Source : Samoa Bureau Statistics

(P) : Provisional figures

Note : n.a. Not applicable

**Table 6. LOCAL GOODS COMPONENT OF THE CONSUMER PRICE INDEX**  
**(Base Period : Average Prices February 2016 = 100)**

Group	All Items	Food and Non Alcoholic Beverages	Alcoholic Beverages, Tobacco and Narcotics	Clothing and Footwear	Housing, Water, Electricity, Gas and other Fuels	Furnishings, Household Equipment and Maintenance	Health	Transport	Communication	Recreation and Culture	Education	Restaurants	Miscellaneous goods and services
<b>Weights</b>	<b>505.3</b>	<b>134.6</b>	<b>104.6</b>	<b>6.0</b>	<b>91.3</b>	<b>3.9</b>	<b>2.2</b>	<b>59.9</b>	<b>51.5</b>	<b>0.4</b>	<b>19.7</b>	<b>22.4</b>	<b>8.8</b>
Ave - 2019	105.5	107.3	116.5	93.8	93.2	100.3	102.5	102.3	104.2	100.0	113.5	103.3	102.3
Ave - 2020	105.3	106.8	120.7	94.2	87.6	100.3	103.0	100.1	104.2	100.0	114.9	109.4	102.3
Ave - 2021	105.9	105.6	122.2	93.8	90.3	100.3	103.0	99.6	107.1	100.0	109.9	111.2	102.3
2021													
March	104.3	104.3	122.3	93.6	85.2	100.3	103.0	100.0	104.2	100.0	109.4	111.0	102.3
April	103.5	100.5	122.3	93.6	86.5	100.3	103.0	100.0	104.2	100.0	109.4	111.0	102.3
May	103.4	99.9	122.1	92.9	86.5	100.3	103.0	100.0	104.2	100.0	109.4	111.0	102.3
June	106.1	102.7	122.2	92.9	97.3	100.3	103.0	100.0	104.2	100.0	109.4	111.0	102.3
July	106.5	104.1	122.3	94.2	97.3	100.3	103.0	100.0	104.2	100.0	109.4	111.0	102.3
August	107.3	106.7	121.9	94.2	98.6	100.3	103.0	100.0	104.2	100.0	109.4	111.4	102.3
September	107.3	106.4	122.1	94.2	98.6	100.3	103.0	100.0	104.2	100.0	109.4	111.4	102.3
October	109.1	107.3	122.2	94.2	100.5	100.3	103.0	100.0	115.9	100.0	109.4	111.4	102.3
November	108.1	115.7	122.1	94.2	83.9	100.3	103.0	98.2	115.9	100.0	109.4	111.7	102.3
December	108.2	115.8	122.3	94.2	83.9	100.3	103.0	97.9	115.9	100.0	109.4	111.7	102.3
2022													
January	108.3	115.1	122.2	94.2	83.9	100.3	103.0	98.2	115.8	100.0	109.4	118.3	102.3
February	108.4	115.4	122.7	94.2	83.9	100.5	103.0	98.2	115.8	100.0	109.4	118.3	102.3
March (P)	108.9	116.6	123.3	94.2	83.9	100.5	103.0	98.2	115.8	100.0	109.4	118.3	102.3
<b><u>Percentage Change (P)</u></b>													
Mar 2022 over Feb 2022	0.4%	1.1%	0.5%	0.0%	0.0%	0.0%	0.0%	0.0%	0.0%	0.0%	0.0%	0.0%	0.0%
Mar 2022 over Mar 2021	4.4%	11.9%	0.8%	0.6%	-1.5%	0.2%	0.0%	-1.7%	11.1%	0.0%	0.0%	6.6%	0.0%

Source : Samoa Bureau Statistics

(P) : Provisional figures

**Table 7. LOCAL ITEMS UNDERLYING INDEX**

**(Base Period : Average Prices February 2016 = 100)**

Group	All Items	Food and Non Alcoholic Beverages	Alcoholic Beverages, Tobacco and Narcotics	Clothing and Footwear	Housing, Water , Electricity, Gas and other Fuels	Furnishings, Household Equipment and Maintenance	Health	Transport	Communication	Recreation and Culture	Education	Restaurants	Miscellaneous goods and services
<b>Weights</b>	<b>185.5</b>	<b>76.1</b>	<b>n.a</b>	<b>6.0</b>	<b>n.a</b>	<b>3.9</b>	<b>1.0</b>	<b>3.4</b>	<b>51.5</b>	<b>n.a</b>	<b>12.3</b>	<b>22.4</b>	<b>8.8</b>
Ave - 2019	103.6	101.6		93.8		100.3	105.2	108.6	104.2		118.5	103.3	102.3
Ave - 2020	104.6	101.9		94.2		100.3	106.3	108.6	104.2		120.6	109.4	102.3
Ave - 2021	105.1	102.1		93.8		100.3	106.3	108.6	107.1		112.7	111.2	102.3
2021													
March	104.6	103.0		93.6		100.3	106.3	108.6	104.2		111.9	111.0	102.3
April	104.7	103.2		93.6		100.3	106.3	108.6	104.2		111.9	111.0	102.3
May	103.7	100.9		92.9		100.3	106.3	108.6	104.2		111.9	111.0	102.3
June	103.9	101.3		92.9		100.3	106.3	108.6	104.2		111.9	111.0	102.3
July	104.0	101.3		94.2		100.3	106.3	108.6	104.2		111.9	111.0	102.3
August	104.0	101.4		94.2		100.3	106.3	108.6	104.2		111.9	111.4	102.3
September	104.1	101.6		94.2		100.3	106.3	108.6	104.2		111.9	111.4	102.3
October	107.5	101.9		94.2		100.3	106.3	108.6	115.9		111.9	111.4	102.3
November	107.7	102.3		94.2		100.3	106.3	108.6	115.9		111.9	111.7	102.3
December	107.8	102.5		94.2		100.3	106.3	108.6	115.9		111.9	111.7	102.3
2022													
January	108.9	103.0		94.2		100.3	106.3	114.4	115.8		111.9	118.3	102.3
February	108.7	102.6		94.2		100.5	106.3	114.4	115.8		111.9	118.3	102.3
March (P)	108.7	102.6		94.2		100.5	106.3	114.4	115.8		111.9	118.3	102.3
<b><u>Percentage Change (P)</u></b>													
Mar 2022													
over	0.0%	0.0%		0.0%		0.0%	0.0%	0.0%	0.0%		0.0%	0.0%	0.0%
Feb 2022													
Mar 2022													
over	3.9%	-0.4%		0.6%		0.2%	0.0%	5.3%	11.1%		0.0%	6.6%	0.0%
Mar 2021													

Source : Samoa Bureau Statistics

(P) : Provisional figures

Note : n.a. Not applicable

**Table 8. CONSUMER PRICE INDEX (AVERAGE ANNUAL INFLATION RATE).**

**(Base Period : Average Prices February 2016 = 100)**

Group	All Items	Food and Non Alcoholic Beverages	Alcoholic Beverages, Tobacco and Narcotics	Clothing and Footwear	Housing, Water, Electricity, Gas and other Fuels	Furnishings, Household Equipment, and Maintenance	Health	Transport	Communication	Recreation and Culture	Education	Restaurants	Miscellaneous goods and services
<i>Weights</i>	<b>1000.0</b>	<b>403.7</b>	<b>128.4</b>	<b>21.2</b>	<b>119.6</b>	<b>30.8</b>	<b>4.6</b>	<b>148.5</b>	<b>51.5</b>	<b>6.1</b>	<b>19.7</b>	<b>22.4</b>	<b>43.5</b>
2019	1.0	1.0	4.1	-1.6	4.4	-1.6	3.1	-3.2	0.9	-4.2	2.8	4.4	0.0
2020	-1.6	-1.5	2.7	-0.3	-5.7	1.8	-0.9	-6.1	0.0	-0.3	1.2	5.9	1.0
2021	3.1	3.4	1.3	5.8	3.1	0.9	6.5	7.0	2.8	-0.3	-4.3	1.7	-1.6
2021													
March	-3.8	-4.4	2.5	-0.1	-10.4	2.0	0.2	-8.9	-0.2	-0.6	-0.5	4.8	1.2
April	-3.9	-4.8	2.5	0.0	-9.6	1.8	0.5	-9.0	-0.1	-0.5	-1.2	4.6	1.0
May	-3.6	-4.8	2.4	0.0	-8.8	1.3	0.9	-7.6	-0.1	-0.4	-1.6	4.4	0.7
June	-3.0	-4.6	2.4	0.3	-7.1	1.1	1.8	-5.0	-0.1	-0.4	-2.0	4.2	0.1
July	-2.4	-4.3	2.2	1.2	-4.9	1.1	2.6	-2.8	0.0	-0.4	-2.4	4.0	-0.4
August	-1.7	-3.8	2.0	2.1	-2.6	1.0	3.6	-1.1	0.0	-0.5	-2.8	3.8	-0.7
September	-0.8	-2.7	1.8	2.9	-0.9	1.1	4.6	0.8	0.0	-0.7	-3.1	3.1	-1.0
October	0.5	-0.8	1.6	3.8	1.1	1.0	5.7	2.6	0.9	-0.7	-3.5	2.5	-1.2
November	1.8	1.2	1.4	4.7	2.1	1.0	6.4	4.7	1.9	-0.5	-3.9	1.9	-1.4
December	3.1	3.4	1.3	5.8	3.1	0.9	6.5	7.0	2.8	-0.3	-4.3	1.7	-1.6
2022													
January	4.5	5.3	1.2	6.9	5.3	0.7	6.5	9.2	3.7	0.1	-4.7	2.0	-1.9
February	5.7	7.0	1.1	8.4	6.6	1.0	6.5	11.0	4.7	0.4	-4.3	2.4	-1.9
March (P)	6.7	8.5	1.0	10.0	7.8	1.2	5.8	12.5	5.6	1.1	-4.0	2.7	-1.7

Source : Samoa Bureau Statistics

(P) : Provisional figures

**Table 9 Consumer Price Index (Percentage change and Average Annual Inflation)**

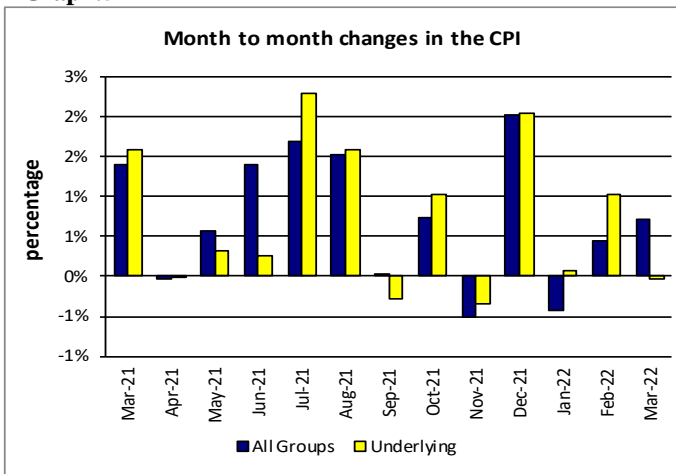
(Base Period: Average Prices February 2016 = 100)

Period	CPI ALL ITEMS	Percentage change over previous month	Last 12 months over previous 12 months	UNDERLYING ALL ITEMS	Percentage change over previous month	Last 12 months over previous 12 months	LOCAL COMPONENT	Percentage change over previous month	Last 12 months over previous 12 months	IMPORTED COMPONENT	Percentage change over previous month	Last 12 months over previous 12 months
2019	108.3	-	1.0	107.2	-	0.5	105.5	-	2.8	111.1	-	-0.7
2020	106.6	-	-1.6	106.6	-	-0.5	105.3	-	-0.2	107.9	-	-2.9
2021	109.9	-	3.1	110.1	-	3.2	105.9	-	0.6	114.0	-	5.7
2021												
March	107.1	1.4	-3.8	107.8	1.6	-2.1	104.3	0.3	-1.9	109.9	2.5	-5.6
April	107.1	0.0	-3.9	107.8	0.0	-2.3	103.5	-0.8	-2.0	110.7	0.7	-5.8
May	107.7	0.6	-3.6	108.1	0.3	-2.3	103.4	-0.2	-1.9	112.1	1.3	-5.2
June	109.2	1.4	-3.0	108.4	0.3	-2.1	106.1	2.6	-1.7	112.4	0.2	-4.3
July	111.0	1.7	-2.4	110.9	2.3	-1.9	106.5	0.4	-1.4	115.7	2.9	-3.3
August	112.7	1.5	-1.7	112.6	1.6	-1.5	107.3	0.8	-1.1	118.3	2.2	-2.3
September	112.8	0.0	-0.8	112.3	-0.3	-0.8	107.3	0.0	-0.8	118.4	0.1	-0.8
October	113.6	0.7	0.5	113.5	1.0	0.6	109.1	1.7	-0.4	118.2	-0.1	1.3
November	113.0	-0.5	1.8	113.1	-0.4	1.9	108.1	-0.9	0.2	118.1	-0.1	3.4
December	115.3	2.0	3.1	115.4	2.0	3.2	108.2	0.0	0.6	122.7	3.9	5.7
2022												
January	114.8	-0.4	4.5	115.4	0.1	4.2	108.3	0.1	1.4	121.6	-0.9	7.6
February	115.3	0.4	5.7	116.6	1.0	5.3	108.4	0.2	2.0	122.4	0.7	9.3
March (P)	116.2	0.7	6.7	116.6	0.0	6.2	108.9	0.4	2.7	123.6	1.0	10.8

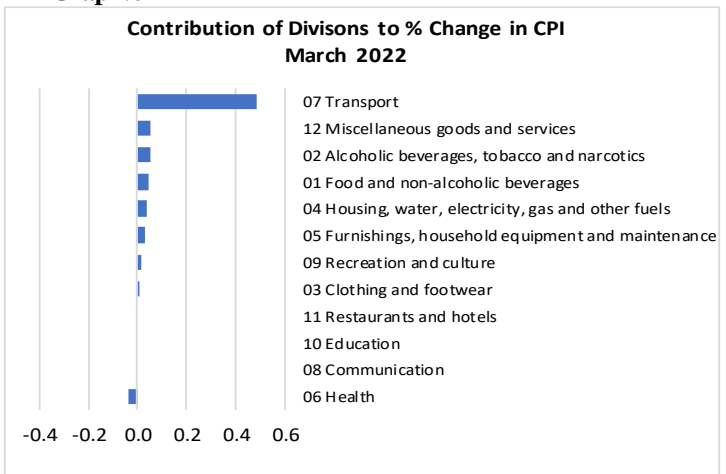
Source : Samoa Bureau Statistics

(P) : Provisional figures

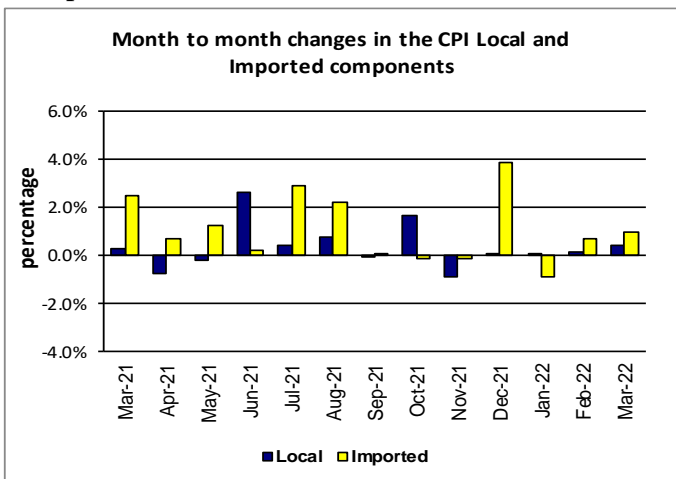
**Graph.5**



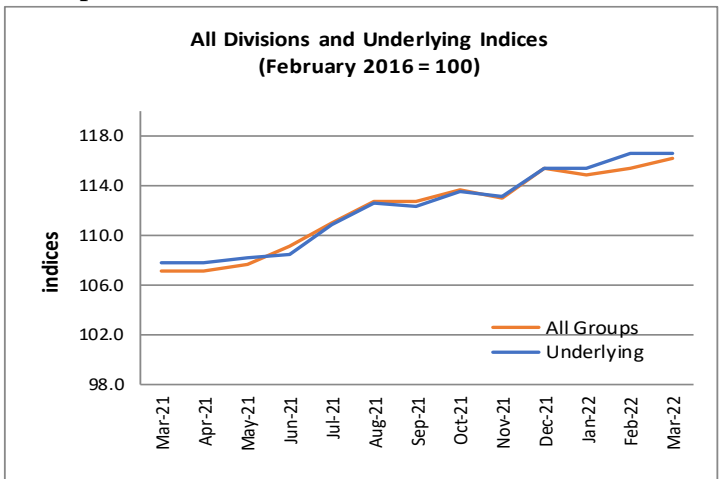
**Graph.6**



**Graph.7**



**Graph.8**



**Graph.9**

