

Please address all correspondence
To Government Statistician
In reply, please quote the file reference



GOVERNMENT OF SAMOA

File Ref: CPI 11/2022

SAMOA BUREAU OF STATISTICS

CONSUMER PRICE INDEX NOVEMBER 2022

Key findings:

The Consumer Price Index for November 2022 increased by 10.2 percent compared to the same month last year.

- The Restaurants index increased 21.0 percent.
- The Transport index increased by 16.8 percent.
- The Food & Non Alcoholic Beverages index also increased by 11.8 percent.

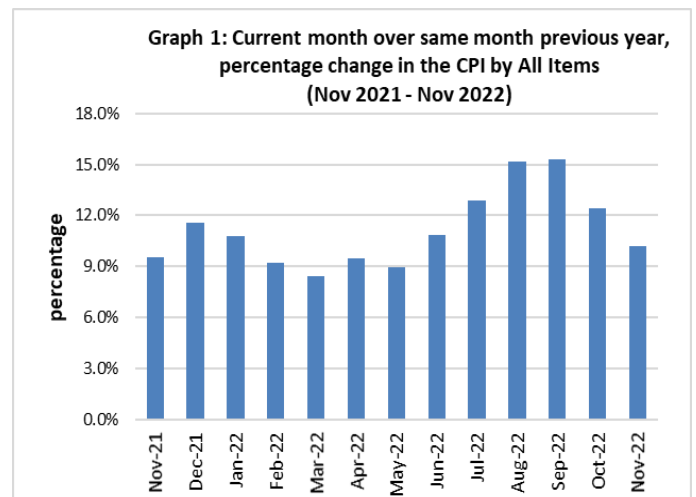
The Average Annual Inflation for the year ended November 2022 was 11.3 percent.

The CPI fell 2.5 percent from October 2022.

SUMMARY

The Consumer Price Index for November 2022 rose 10.2 percent compared to November 2021. This was mainly influenced by the increase in the Imported goods component by 13.3 percent from the same month last year as a result of higher prices for building material, fuel and imported food. However, when compared to the previous month, the CPI fell 2.5 percent.

The Local goods component also contributed to the increase when it went up by 6.9 percent on a year-on-year (y-o-y) basis, due to higher prices for meals, phone calls, internet, airline fares and local food items. Graph 1 shows the percentage changes over the same month last year in the Consumer Price Index by all Divisions from November 2021 to November 2022.

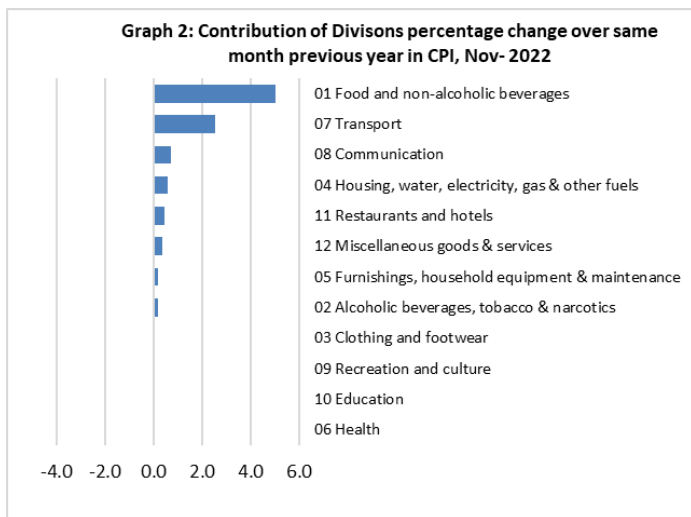


Source : Samoa Bureau of Statistics

Total All Divisions Contribution

As depicted in Graph 2, Food & Non Alcoholic Beverages was the largest contributor to the 10.2 percent rise in the CPI in November 2022, with a contribution of 5.0 percentage-points (pp) to the overall increase in November 2022. The most significant drivers of this within the group were chicken leg quarters (up 6.9%), raw sugar (up 26.7%), bread (up 11.3%), corned beef (up 18.5%), rice (up 29.3%), cooking oil (up 74.9%), flour (up 44.4%), onion (up 39.9%), Chinese cabbage (up 39.4%), potatoes (up 32.2%), vermicelli (up 36.4%) and taamu (up 43.1%).

The next largest contributor was Transport with a contribution of 2.6 pp, increasing 16.8% compared to November 2021. The greatest drivers of this increase were petrol increasing 22.9%, air fares (Apia-Pago-Apia) rising 71.1% and (Apia-Auckland-Apia) up 32.1% and diesel increasing 45.5% from the same month of the previous year. Communication also contributed 0.7 percentage-points due to the increase in internet and mobile phone calling per minute.



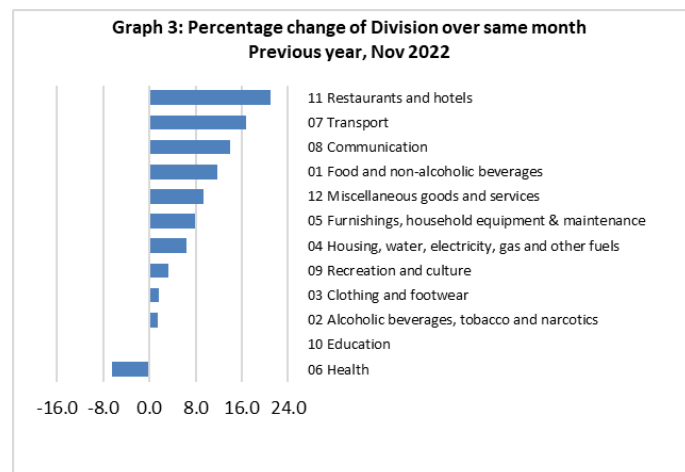
Source : Samoa Bureau of Statistics

Consumer Price Index (% Change)

Graph 3 shows the percentage change for all Divisions (groups) in November 2022 in comparison to November 2021. Restaurant had the largest increase of 21.0 percent followed by Transport up 16.8%, Communication up 13.9% and Food & Non Alcoholic up 11.8%. Other groups such as Miscellaneous Goods & Services, Furnishing, Household Equipment & Maintenance, Housing, Water, Electricity Gas & Other Fuel, Recreation & Culture, Clothing & Footwear and Alcoholic Beverages & Tobacco indices recorded increases

of 9.4, 7.9, 6.5, 3.2, 1.7 and 1.5 percent respectively.

On the other hand, the Health index fell by 6.5 percent. No changes were recorded for the Education index.



Source : Samoa Bureau of Statistics

Imported Goods Component

The Imported goods component of the Consumer Price Index registered an increase of 13.3 percent when compared to the same month last year. This increase was mainly due to higher prices recorded for cement, cooking gas, fuel (petrol, diesel and kerosene), raw sugar, rice, turkey wings, cooking oil, flour, onion, potatoes, vermicelli, toilet paper, hair gel, toilet soap, washing soap and mosquito coil.

Local Goods Component

The increase in prices for meals, mobile phone calling per minute, internet, airline fares, round pancake, fresh fish, Chinese cabbage, mineral water, tomato, taamu and head cabbage have resulted in the 6.9 percent increase in the local goods component.

Restaurants Index

The Restaurants index recorded an increase of 21.0 percent due to the rise in prices for steam rice & chicken (33.3%), curry & chapsuey (25.0%), chicken & chip (16.4%) and fish & chip (13.9%).

Transport Index

The increases in petrol of 22.9%, diesel of 45.5%, airline fares (Apia-Pago-Apia) of 71.1% and Apia-Auckland-Apia fares of 32.1% are reflected in the 16.8 percent increase in the Transport index.

Communication Index

Increased prices recorded for mobile phone calling per minute (up 19.5%) and internet data bundle (up 15.8%) led to the 13.9 percent increase in the Communication index.

Food and Non Alcoholic Beverages Index

An increase of 11.8 percent in the Food & Non Alcoholic Beverages index was a reflection of higher prices recorded for raw sugar (26.7%), rice (29.3%), Maggie noodle (23.0%), round pancake (33.3%), turkey wing (29.0%), fresh fish (string 13.8% and large 14.6%), cooking oil (74.9%), Chinese cabbage (39.4%), flour (44.4%), onion (39.9%), bowl noodle (28.5%), potatoes (32.2%), mineral water (26.3%), instant coffee (28.7%), vermicelli (36.4%), tomatoes (30.2%), taamu (43.1%) and head cabbage (23.4%).

Miscellaneous Goods and Services Index

Higher prices recorded for toilet paper, hair gel, toilet soap and toothpaste are reflected in the 9.4 percent increase in the Miscellaneous Goods & Services index.

Furnishings, Household Equipment & Maintenance Index

The Furnishings, Household Equipment & Maintenance index rose 7.9 percent due to the increase in washing powder, washing soap, mosquito coil, clothing chest and glass buffet sideboard (sefe).

Housing, Water, Electricity, Gas and other Fuels Index

The increase in prices recorded for cooking gas (14.9%), kerosene (49.9%), cement (66.7%) and timber (13.2%) led to the 6.5 percent increase in the Housing, Water, Electricity, Gas and other Fuels index.

Recreation and Culture Index

Increased prices recorded for laptop and weedkiller is reflected in the 3.2 percent increase in the Recreation and Culture index.

Clothing and Footwear Index

Higher prices recorded for school uniform, ie faitaga and women's undergarments is reflected in the 1.7 percent increase in the Clothing and Footwear index.

Alcoholic Beverages and Tobacco Index

The 1.5 percent increase in the Alcoholic Beverages and Tobacco index was a result of higher prices recorded for beer and Samoan kava.

Health Index

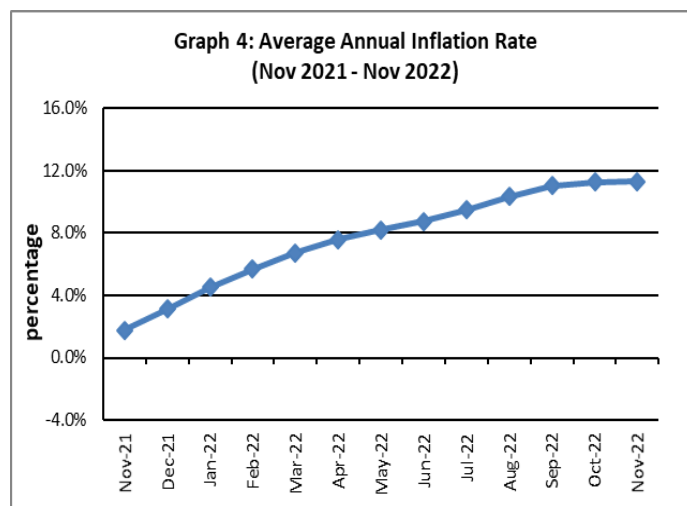
The 6.5 percent decrease in the Health index was influenced by lower prices recorded for medicine (amoxicillin tablets).

Underlying Indices ^{1/}

The All Items Underlying Index for November 2022 registered an increase of 11.5 percent when compared to November 2021, but decreased by 3.8 percent when compared to October 2022. Both the Imported and Local Items Underlying Indices recorded increases of 11.6 and 11.2 percent respectively.

Inflation Rate

The average annual inflation rate for the year ended November 2022 was 11.3 percent. For the twelve months ending November 2021, the inflation rate was 1.8 percent. Presented in Graph 4 is the Average annual inflation rate (Nov 2021 - Nov 2022).



Source : Samoa Bureau of Statistics

The attached Tables and Graphs provide the users with more detailed analysis.

Technical Notes:

The Consumer Price (CPI) measures the rate of inflation for Samoa. It is designed to measure the change in prices for the goods purchased by households in Samoa. The CPI measures the change in prices by comparing the prices for a basket of goods and services at the collection period with the price for the same goods in a base period.

The basket of goods that is priced is based on the average expenditures of households as recorded in the Household Income and Expenditure Survey (HIES). The HIES survey identifies how much households spend on different items. The more households spend on an item on average, the more important it is to the price index, and the higher the weight in the index.

^{1/} Monthly movements in the 'headline' CPI series can be volatile. This volatility reflects price changes in particular items that may be due, among other factors, to fluctuations in commodity markets and agricultural conditions, policy changes, or seasonal or infrequent price resetting.

Underlying inflation is a measure of inflation that excludes certain items that face volatile price movements. Underlying inflation eliminates products that can have temporary price shocks because these shocks can diverge from the overall trend of inflation and give a false measure of inflation.

Revision

This publication incorporates revision to the CPI for September 2022 due to the change in the Transport index; revised data is in red font on the attached tables.

SAMOA BUREAU OF STATISTICS

Economic Statistics Division
FMFM II Building, Level 1
P O Box 1151
Apia, Samoa

Phone: (685) 62014/62015/62005

Fax: (685) 24675

E-mail: info.stats@sbs.gov.ws

Website: www.sbs.gov.ws

Date of release: 22nd December 2022

The next Consumer Price Index will be released on 20th January 2023.

Leota Aliielua Salani
GOVERNMENT STATISTICIAN/(CEO)

Table 1. CONSUMER PRICE INDEX.

(Base Period : Average Prices February 2016 = 100)

Group	All Items	Food and Non Alcoholic Beverages	Alcoholic Beverages, Tobacco and Narcotics	Clothing and Footwear	Housing, Water, Electricity, Gas and other Fuels	Furnishings, Household Equipment, and Maintenance	Health	Transport	Communication	Recreation and Culture	Education	Restaurants	Miscellaneous goods and services
<i>Weights</i>	1000.0	403.7	128.4	21.2	119.6	30.8	4.6	148.5	51.5	6.1	19.7	22.4	43.5
Ave - 2019	108.3	112.1	116.8	93.8	95.0	96.4	100.0	111.3	104.2	88.7	113.5	103.3	97.8
Ave - 2020	106.6	110.4	120.0	93.5	89.6	98.1	99.2	104.4	104.2	88.5	114.9	109.4	98.8
Ave - 2021	109.9	114.1	121.6	98.9	92.4	98.9	105.7	111.7	107.1	88.2	109.9	111.2	97.2
2021													
November	113.0	120.1	121.6	105.1	88.9	98.7	107.0	115.5	115.9	89.0	109.4	111.7	96.9
December	115.3	123.1	121.7	105.1	90.5	99.7	107.0	121.3	115.9	89.0	109.4	111.7	97.1
2022													
January	114.8	122.3	121.7	106.4	90.2	100.7	107.0	119.0	115.8	89.0	109.4	118.3	97.2
February	115.3	123.8	122.1	108.6	90.3	102.0	109.9	117.0	115.8	89.0	109.4	118.3	97.6
March	116.2	124.0	122.6	108.9	90.6	103.2	101.5	120.8	115.8	91.8	109.4	118.3	99.1
April	117.2	124.5	122.4	108.8	92.3	102.5	99.9	125.2	115.8	91.8	109.4	118.3	99.8
May	117.3	124.5	122.6	109.4	92.4	102.5	95.1	125.4	115.8	91.8	109.4	118.3	101.4
June	121.0	129.0	122.6	109.3	93.6	106.3	95.1	134.8	115.8	91.8	109.4	128.3	101.2
July	125.3	135.9	123.0	108.4	93.6	106.8	104.1	137.9	133.7	90.6	109.4	128.5	102.5
August	129.9	141.4	123.4	108.7	96.0	108.1	108.8	149.9	133.7	92.3	109.4	129.2	104.7
September	130.1	145.5	123.4	108.0	94.8	107.5	102.0	140.9	133.7	92.0	109.4	133.8	104.7
October	127.7	141.9	123.4	108.5	94.5	108.0	98.9	135.3	133.7	88.6	109.4	133.2	105.1
November (P)	124.6	134.3	123.4	106.9	94.6	106.6	100.0	134.9	132.0	91.8	109.4	135.1	106.0

Percentage Change (P)

Nov 2022													
over	10.2%	11.8%	1.5%	1.7%	6.5%	7.9%	-6.5%	16.8%	13.9%	3.2%	0.0%	21.0%	9.4%
Nov 2021													
Nov 2022													
over	-2.5%	-5.4%	0.0%	-1.5%	0.2%	-1.3%	1.1%	-0.3%	-1.3%	3.6%	0.0%	1.5%	0.9%
Oct 2022													

Source : Samoa Bureau Statistics

(P) : Provisional figures

■ : Revised figures

Table 2. ALL ITEMS UNDERLYING INDEX

(Base Period : Average Prices February 2016 = 100)

Group	All Items	Food and Non Alcoholic Beverages	Alcoholic Beverages, Tobacco and Narcotics	Clothing and Footwear	Housing, Water, Electricity, Gas and other Fuels	Furnishings, Household Equipment, and Maintenance	Health	Transport	Communication	Recreation and Culture	Education	Restaurants	Miscellaneous goods and services
<i>Weights</i>	586.7	345.3	<i>n.a</i>	21.2	24.2	30.8	3.5	26.4	51.5	5.6	12.3	22.4	43.5
<i>Ave - 2019</i>	107.2	111.6		93.8	94.6	96.4	100.1	108.1	104.2	87.9	118.5	103.3	97.8
<i>Ave - 2020</i>	106.6	109.9		93.5	93.7	98.1	98.9	110.1	104.2	87.6	120.6	109.4	98.8
<i>Ave - 2021</i>	110.1	114.8		98.9	94.5	98.9	107.5	113.6	107.1	87.3	112.7	111.2	97.2
2021													
November	113.1	117.9		105.1	99.2	98.7	109.3	113.8	115.9	88.1	111.9	111.7	96.9
December	115.4	121.4		105.1	104.7	99.7	109.3	113.8	115.9	88.1	111.9	111.7	97.1
2022													
January	115.4	120.9		106.4	104.5	100.7	109.3	114.4	115.8	88.1	111.9	118.3	97.2
February	116.6	122.4		108.6	105.4	102.0	113.2	114.5	115.8	88.1	111.9	118.3	97.6
March	116.6	122.1		108.9	105.1	103.2	102.0	114.5	115.8	91.2	111.9	118.3	99.1
April	117.4	123.1		108.8	111.5	102.5	99.9	114.5	115.8	91.2	111.9	118.3	99.8
May	117.3	122.8		109.4	111.8	102.5	93.5	114.5	115.8	91.2	111.9	118.3	101.4
June	120.5	127.2		109.3	111.5	106.3	93.5	114.5	115.8	91.2	111.9	128.3	101.2
July	126.7	134.9		108.4	111.2	106.8	105.4	114.5	133.7	89.9	111.9	128.5	102.5
August	129.6	139.1		108.7	111.9	108.1	111.7	115.8	133.7	91.7	111.9	129.2	104.7
September	132.7	144.1		108.0	112.6	107.5	102.6	117.1	133.7	91.4	111.9	133.8	104.7
October	131.1	141.3		108.5	112.2	108.0	98.5	117.2	133.7	87.8	111.9	133.2	105.1
November (P)	126.0	132.9		106.9	112.9	106.6	100.1	117.4	132.0	91.2	111.9	135.1	106.0
<u>Percentage Change (P)</u>													
Nov 2022													
over	11.5%	12.7%		1.7%	13.8%	7.9%	-8.5%	3.2%	13.9%	3.5%	0.0%	21.0%	9.4%
Nov 2021													
Nov 2022													
over	-3.8%	-5.9%		-1.5%	0.6%	-1.3%	1.5%	0.1%	-1.3%	4.0%	0.0%	1.5%	0.9%
Oct 2022													

Source : Samoa Bureau Statistics

(P) : Provisional figures

Note : n.a. Not applicable

Table 3. AVERAGE RETAIL PRICES OF SELECTED COMMODITIES

Commodities	Wt	Unit	2021			2022			Nov-22	
			Sep	Oct	Nov	Sep	Oct	Nov (P)	% chng from prev mnth	%chng from Nov 21
			01 Food and non-alcoholic beverages							
Chicken leg quarters	62.19	kg	5.08	4.98	4.83	7.20	6.61	5.16	-21.9%	6.9%
Raw Sugar	21.27	kg	2.91	2.92	2.91	3.20	3.48	3.68	6.0%	26.7%
Bread	17.20	loaf	1.64	1.64	1.64	1.80	1.82	1.82	0.4%	11.3%
Corned Beef Oxford (a)	15.88	340 grms	8.55	8.55	8.55	9.52	9.52	10.13	6.5%	18.5%
Taro	15.17	kg	2.58	2.55	3.71	4.13	3.81	3.57	-6.1%	-3.7%
Re-packed medium grain rice	13.38	kg	2.65	2.67	2.79	3.35	3.43	3.60	4.9%	29.3%
Prepacked medium grain rice (a)	13.38	907 grms	2.77	2.80	2.80	2.88	2.87	2.87	0.0%	2.4%
Bongo	10.18	20 grms	0.83	0.83	0.83	0.90	0.87	0.92	5.7%	10.8%
Keke Saina Biscuits (a)	9.21	pkt 10	6.14	6.14	6.13	6.63	6.63	7.18	8.4%	17.3%
Ice Cream (a)	9.17	2ltr	15.58	15.52	15.60	17.27	17.60	18.90	7.4%	21.2%
Ramen	9.00	85 grms	1.11	1.11	1.11	1.23	1.31	1.37	4.2%	23.0%
Fish (Piece)	7.92	kg	24.32	23.92	25.82	29.28	25.58	22.48	-12.1%	-12.9%
Butter	7.66	454 grms	16.14	16.23	16.11	18.47	18.47	18.79	1.7%	16.6%
Round Pancake (a)	7.50	sml	0.15	0.15	0.15	0.20	0.20	0.20	0.0%	33.3%
Mutton Flaps	6.63	kg	24.84	27.75	25.04	25.48	25.55	26.30	2.9%	5.0%
Canned fish betw een \$3.00 and \$3.99 N/Oil	6.37	425 grms	3.12	3.12	3.14	3.32	3.34	3.32	-0.7%	5.7%
Canned fish \$4:00 or over N/Oil	6.37	425 grms	4.82	4.69	4.69	4.77	4.94	4.89	-1.0%	4.3%
Canned fish betw een \$3.00 and \$3.99 N/Oil	6.37	425grms	3.39	3.35	3.24	3.18	3.21	3.19	-0.8%	-1.5%
Canned fish under \$3.00 in N/Oil	6.37	425 grms	2.67	2.70	2.73	2.83	2.63	2.75	4.4%	0.6%
Turkey Wings	6.31	kg	9.66	10.29	11.34	13.30	13.63	14.63	7.3%	29.0%
Fish (string)	5.98	kg	10.19	11.37	11.63	15.07	13.44	13.24	-1.5%	13.8%
Fish (large)	5.98	kg	17.51	17.99	18.81	24.93	23.95	21.56	-10.0%	14.6%
Cooking vegetable oil (a)	5.89	ltr	5.18	5.31	5.78	10.86	10.84	10.12	-6.7%	74.9%
Sausage beef	5.76	kg	14.32	14.41	14.33	15.07	15.40	15.28	-0.8%	6.6%
Chinese Cabbage	5.53	kg	4.89	5.23	6.07	5.21	5.87	8.46	44.0%	39.4%
Eggs medium size	5.45	doz	7.26	7.41	7.55	7.13	7.48	7.65	2.3%	1.2%
Flour plain w hite	5.29	kg	2.31	2.31	2.27	2.88	3.30	3.28	-0.7%	44.4%
Onions	5.23	kg	3.24	3.23	2.95	4.06	4.06	4.12	1.5%	39.9%
Milk Devondale	5.11	1tr	3.75	3.77	3.80	4.34	4.32	4.40	1.9%	15.8%
Soft Drink Coke	5.07	600 mls	3.00	3.03	3.03	3.10	3.10	3.11	0.2%	2.6%
Soft Drink Taxi	5.07	330 mls	1.82	1.82	1.82	1.92	1.92	1.92	0.0%	5.5%
Milk Anchor	4.81	1tr	3.85	3.85	3.88	4.28	4.28	4.34	1.4%	11.9%
Salted Beef	4.72	kg	20.21	20.41	21.35	22.10	22.20	22.83	2.8%	6.9%
Canned fish Soifua in Tomato Sauce	4.47	425 grms	2.53	2.53	2.45	2.46	2.54	2.54	0.0%	3.6%
CCK Coffee	4.47	100 grms	3.94	3.94	3.94	3.94	3.94	3.94	0.0%	0.0%
Sky Flakes Biscuits	4.29	850 grms	16.74	16.89	16.89	18.64	19.36	19.63	1.4%	16.2%
Stew ing beef	4.20	kg	16.05	16.05	16.05	17.39	17.51	17.01	-2.9%	6.0%
Koko Samoa	4.09	cup	16.62	16.12	16.96	16.85	18.78	18.48	-1.6%	8.9%
Corned Beef Pacific	3.64	340 grms	15.67	15.74	15.74	17.46	17.40	17.74	1.9%	12.7%
Ramen kimchi (bow l)	3.40	86 grms	2.67	2.73	2.75	3.38	3.51	3.53	0.7%	28.5%
Soy Sauce Mushroom	3.25	750 grms	3.06	3.10	3.09	3.46	3.42	3.60	5.4%	16.4%
Pork Pig Trotter	3.10	kg	7.78	7.96	8.04	8.25	8.06	8.27	2.6%	2.9%
Corned Beef Palm	3.01	340 grms	13.52	14.01	14.16	17.12	17.72	17.63	-0.5%	24.6%
Ripe Banana (a)	2.71	kg	3.09	3.29	4.01	4.51	4.14	4.24	2.4%	5.6%
Tang pow der (a)	2.51	25 grms	0.65	0.66	0.66	0.65	0.65	0.60	-8.3%	-9.6%
Minties Pascall (a)	2.49	200 grms	12.90	12.90	12.90	12.50	12.50	12.50	0.0%	-3.1%

Potatoes	2.41	kg	3.80	3.86	3.85	4.70	4.55	5.08	11.7%	32.2%
Green Banana	2.29	kg	1.09	1.22	1.37	1.67	1.77	1.57	-11.0%	14.9%
Apple small	2.26	each	1.62	1.40	1.42	1.54	1.46	1.39	-5.1%	-2.4%
Mineral Water	2.25	bottle	1.48	1.48	1.48	1.87	1.87	1.87	0.0%	26.3%
Chocolate Cake (a)	2.15	sml	21.50	21.50	21.50	21.50	21.50	21.50	0.0%	0.0%
Cucumbers	2.12	kg	4.61	4.64	4.71	4.99	5.20	5.73	10.2%	21.6%
Instant Nescafe Coffee	2.02	50 grms	6.82	6.82	6.82	7.62	8.12	8.78	8.1%	28.7%
Mutton Neck	1.93	kg	24.13	24.51	25.11	25.31	27.37	26.69	-2.5%	6.3%
Vermicelli Lungken	1.88	454 grms	3.47	3.46	3.46	4.42	4.68	4.72	1.0%	36.4%
Tomatoes	1.80	kg	12.89	11.37	10.78	11.98	11.58	14.04	21.3%	30.2%
Sausage Pork	1.68	kg	14.38	14.18	14.15	14.52	14.91	15.16	1.7%	7.1%
Bell Tea Bags	1.62	50 grms	11.18	11.18	11.24	11.88	11.45	11.45	0.0%	1.9%
Samco Tw isties	1.40	20 grms	0.70	0.70	0.70	0.76	0.74	0.79	5.8%	12.2%
Matured husked Coconuts	1.30	kg	1.01	0.97	1.01	1.25	1.17	1.23	5.0%	21.2%
Matured Un husked Coconuts (a)	1.30	kg	0.61	0.66	0.62	0.85	0.79	0.73	-7.7%	18.1%
Taamu	1.13	kg	5.53	3.87	5.45	12.01	11.27	7.80	-30.8%	43.1%
Round Cabbage Round	1.12	kg	6.85	6.05	6.83	7.90	7.10	8.43	18.7%	23.4%

02 Alcoholic beverages, tobacco and narcotics

Beer Vailima Lager	37.94	355 mls	3.65	3.65	3.65	3.80	3.80	3.80	0.0%	4.2%
Pall Mall Filter Cigarettes (Red)	24.29	20 rolls	14.60	14.60	14.60	14.60	14.60	14.60	0.0%	0.0%
Pall Mall Menthol Cigarettes (Green)	24.29	20 rolls	14.60	14.60	14.60	14.60	14.60	14.60	0.0%	0.0%
Beer Taula (a)	16.26	330 mls	3.55	3.55	3.55	3.68	3.66	3.68	0.3%	3.5%
Tobacco w infield (a)	12.64	30 grms	15.00	15.00	15.00	15.00	15.00	15.00	0.0%	0.0%
Vodka Niu Spirit (a)	3.76	Niu / 2 ltr	66.82	66.82	66.82	66.82	66.82	66.82	0.0%	0.0%
Whisky Jim Bean Spirit (a)	3.76	1ltr	92.75	92.75	92.75	91.75	91.88	91.88	0.0%	-0.9%
Paper Cigarettes	3.61	50 sheets	1.70	1.70	1.70	1.70	1.70	1.70	0.0%	0.0%
Samoa kava	1.82	pkt	34.44	43.33	41.33	42.67	42.46	42.50	0.1%	2.8%

03 Clothing and footwear

Uniform le Faitaga College boys	4.28	size 8-10	37.00	37.00	37.00	38.33	38.33	38.33	0.0%	3.6%
Uniform Pa'ave (a)	3.71	size 7	37.33	37.33	37.33	42.67	42.67	42.67	0.0%	14.3%
Jandals soft	2.48	10.5 size	9.25	9.25	9.25	9.28	9.50	9.10	-4.2%	-1.6%
Puletasi mamanu palama (a)	2.35	medium	150.00	150.00	150.00	125.00	125.00	125.00	0.0%	-16.7%
le solosolo cotton print	2.22	42 inch	11.77	11.77	11.93	12.10	12.10	11.75	-2.9%	-1.5%
Cargo shorts (a)	1.76	38 size	88.25	92.25	92.25	93.00	93.00	93.00	0.0%	0.8%
Shirt short sleeves men Aloha shirt (a)	1.15	men / XL	55.23	55.23	55.23	55.60	56.85	56.85	0.0%	2.9%
Shirt long sleeves men	1.15	16.5 size	37.24	37.24	37.24	37.75	37.75	37.75	0.0%	1.4%
Shoes Nike Running shoes (a)	0.82	size 9	258.50	258.50	258.50	258.50	258.50	224.75	-13.1%	-13.1%
le Faitaga	0.70	36/38 size	33.80	33.80	33.80	35.80	38.05	38.05	0.0%	12.6%
Woman Nylon Panties	0.59	medium	4.80	4.80	4.80	5.00	5.00	5.00	0.0%	4.2%

04 Housing, water, electricity, gas and other fuels

Electricity Cashpower	50.59	kwh	0.69	0.72	0.58	0.58	0.58	0.58	0.0%	0.0%
Reservoir treated Water	28.55	15-40 m3	1.67	1.67	1.34	1.34	1.34	1.34	0.0%	0.0%
Liquid gas	15.77	9kg	59.25	62.50	62.50	72.05	71.80	71.80	0.0%	14.9%
Government house Rent	12.16	2 b/room	650.00	650.00	650.00	680.00	680.00	680.00	0.0%	4.6%
Kerosene	4.12	1ltr	2.31	2.29	2.39	3.68	3.58	3.58	0.0%	49.9%
Paint High gloss w hite	3.45	4 ltrs	76.08	76.08	77.42	83.75	84.42	83.75	-0.8%	8.2%
Paint Plus 2 plastic w hite	3.45	4 ltrs	45.80	44.60	48.80	48.00	47.20	49.80	5.5%	2.0%
Cement NZ or Australia	0.78	40 kg	23.93	25.67	27.46	45.31	45.17	45.77	1.3%	66.7%
Dressed per Timber 2x4	0.71	meter	9.41	9.99	9.72	10.89	10.75	11.01	2.4%	13.2%

05 Furnishings, household equipment and routine household maintenance

Washing powder (a)	6.27	200 grms	1.87	1.87	1.87	1.96	2.02	2.01	-0.5%	7.7%
Washing Soap yellow	5.90	bar	2.83	2.81	2.76	3.45	3.42	3.42	0.0%	23.7%
Mosquito coil	4.36	10 coil	1.30	1.28	1.28	1.55	1.58	1.55	-1.6%	21.6%
Mattress single Futon (a)	3.81	4 inch	155.67	155.67	157.33	159.83	159.83	146.50	-8.3%	-6.9%
Babysitting live-in (a)	3.78	1week	142.50	142.50	142.50	142.50	142.50	142.50	0.0%	0.0%
Refrigerator common brand	2.49	331-335 ltr	2321.32	2321.32	2321.32	2402.52	2402.52	2362.52	-1.7%	1.8%
Gold Powder washing powder	1.68	180 grms	1.67	1.67	1.67	1.67	1.67	1.67	0.0%	0.0%
Eveready AA size Batteries	1.20	AA 1/4 size	3.84	3.96	3.96	3.84	3.70	3.70	0.0%	-6.5%
Bush knife tramontina	0.88	24 inch	28.61	28.61	28.86	29.61	29.86	29.86	0.0%	3.5%
Kerosene stove	0.16	2 burner	112.50	112.50	112.50	112.50	112.50	112.50	0.0%	0.0%
Tumblers Glass basic no design (a)	0.11	medium	17.46	17.46	17.46	17.46	16.66	16.66	0.0%	-4.6%
Shelf 3 shelves	0.11	48*48 inch	620.00	620.00	620.00	695.00	720.00	740.00	2.8%	19.4%
Clothing chest flat top	0.01	medium	500.00	500.00	500.00	595.00	620.00	607.50	-2.0%	21.5%

06 Health

Amoxicillin 500mg tablets (a)	2.46	20 tablets	8.50	8.50	8.50	8.23	7.73	7.90	2.2%	-7.1%
Hospital Charge	1.15	per night	22.50	22.50	22.50	22.50	22.50	22.50	0.0%	0.0%
Private Doctor Consultation fee	1.04	per adult	30.00	30.00	30.00	30.00	30.00	30.00	0.0%	0.0%

07 Transport

Petrol	60.80	1ltr	2.85	2.81	2.86	3.74	3.51	3.51	0.0%	22.9%
Taxi Fare P.O to Motootua Hosp	8.15	per trip	4.80	4.80	4.80	4.80	4.80	4.80	0.0%	0.0%
Taxi Fares P.O to Malua	8.15	per trip	31.30	31.30	31.30	31.30	31.30	31.30	0.0%	0.0%
Taxi Fares P.O to Falefa	8.15	per trip	43.20	43.20	43.20	43.20	43.20	43.20	0.0%	0.0%
Air Fares Faleolo-Pago-Faleolo	6.84	return trip	395.00	395.00	395.00	780.00	676.02	676.02	0.0%	71.1%
Air Fares Apia Auckland Apia	6.77	1month	1257.87	1257.87	1257.87	1828.51	1816.67	1661.54	-8.5%	32.1%
Car Registration (private car)	5.67	1501-2000 cc	320.00	320.00	256.00	256.00	256.00	256.00	0.0%	0.0%
Used Car Toyota Corolla (a)	5.08	1500 cc	23500.00	23500.00	23500.00	23500.00	23500.00	23500.00	0.0%	0.0%
Used Car Toyota Camry (a)	5.08	1500 cc	18000.00	18000.00	18000.00	18000.00	18000.00	18000.00	0.0%	0.0%
Diesel	4.83	1ltr	2.68	2.64	2.74	4.09	3.99	3.99	0.0%	45.5%
Bus Fares Apia Motootua Hosp	3.49	one adult	1.30	1.30	1.30	1.30	1.30	1.30	0.0%	0.0%
Bus Fares Apia Malua	3.49	one adult	2.60	2.60	2.60	2.60	2.60	2.60	0.0%	0.0%
Bus Fares Apia Falefa	3.49	one adult	3.70	3.70	3.70	3.70	3.70	3.70	0.0%	0.0%
Labour charge car repair	3.38	min charge	63.33	63.33	63.33	67.00	67.00	67.00	0.0%	5.8%
New Pickup Ford Ranger Double cab (a)	3.25	3200 cc	94000.00	94000.00	94000.00	94000.00	94000.00	94000.00	0.0%	0.0%
New Pickup Toyota Hilux Double cab (a)	3.25	3200 cc	105000.00	105000.00	105000.00	105000.00	105000.00	105000.00	0.0%	0.0%
Used Mini van Toyota Noah (a)	2.42	2000 cc	19600.00	19600.00	19600.00	22100.00	22100.00	22000.00	-0.5%	12.2%
Used Mini van Toyota Voxy (a)	2.42	2000 cc	19600.00	19600.00	19600.00	22100.00	22100.00	22000.00	-0.5%	12.2%
Car Tyre	1.49	195/70 R(14)	191.25	206.25	203.75	182.50	187.50	197.50	5.3%	-3.1%
Boat Fares Mulifanua Salelologa	1.14	one way	12.00	12.00	12.00	10.00	10.00	10.00	0.0%	-16.7%
Boat Fares Apia Pago Apia	1.14	min charge	120.00	120.00	120.00	120.00	120.00	120.00	0.0%	0.0%

08 Communication

Calling per minute Rate cell phone (a)	10.02	per minute	0.43	0.43	0.43	0.59	0.59	0.55	-6.8%	27.9%
Internet data bundles per mb Rate (a)	10.02	per mb	0.25	0.25	0.25	0.33	0.33	0.33	0.0%	32.0%
Calling per minute Rate cell phone (a)	10.02	per minute	0.44	0.44	0.44	0.49	0.49	0.49	0.0%	11.4%
Internet data bundles per mb Rate (a)	10.02	per mb	0.20	0.32	0.32	0.33	0.33	0.33	0.0%	3.1%
Telephone Rental	3.87	1month	24.15	24.15	24.15	24.15	24.15	24.15	0.0%	0.0%
Prepaid Internet	3.06	30 mins	5.80	5.80	5.80	5.80	5.80	5.80	0.0%	0.0%
Telephone call NZ	1.50	3 mins	2.37	2.37	2.37	2.37	2.37	2.37	0.0%	0.0%
Telephone call USA	1.50	3 mins	2.97	2.97	2.97	2.97	2.97	2.97	0.0%	0.0%
Telephone call local	1.50	1min	0.10	0.10	0.10	0.10	0.10	0.10	0.0%	0.0%

09 Recreation and culture

Television LCD 32" (a)	2.30	LCD 32"	852.83	852.83	852.83	869.50	869.50	839.33	-3.5%	-1.6%
Exercise Book w arw ick	1.44	1B4	1.45	1.48	1.48	1.55	1.40	1.40	0.0%	-5.6%
Laptop (a)	1.33	each	2898.60	2898.60	2898.60	2898.60	2898.60	3516.80	21.3%	21.3%
Weedkiller Graxomone/Agriquat (a)	0.56	1ltr	46.67	46.67	46.67	51.67	51.67	51.67	0.0%	10.7%
Cinema Admission	0.41	ticket	15.00	15.00	15.00	15.00	15.00	15.00	0.0%	0.0%
New s Paper Samoa Observer	0.01	each	2.50	2.50	2.50	2.50	2.50	2.50	0.0%	0.0%
New s Paper New sline	0.01	each	2.50	2.50	2.50	2.50	2.50	2.50	0.0%	0.0%

10 Education

Fees Primary PTA/registration fees (a)	7.23	Year 6	72.50	72.50	72.50	72.50	72.50	72.50	0.0%	0.0%
Fees Secondary PTA/registration fees (a)	5.11	Year 10	58.00	58.00	58.00	58.00	58.00	58.00	0.0%	0.0%
Fees Tertiary NUS registration School Fees	3.79	registration	322.00	322.00	322.00	322.00	322.00	322.00	0.0%	0.0%
Fees Secondary Y Examination Fees (a)	3.61	Y12-13	25.50	25.50	25.50	25.50	25.50	25.50	0.0%	0.0%

11 Restaurants and hotels

Fish & Chip Meal	7.79	1serve	10.08	10.08	10.17	11.33	11.25	11.58	3.0%	13.9%
Curry & Chopsuey Meal	4.87	1serve	4.00	4.00	4.00	5.00	5.00	5.00	0.0%	25.0%
Chicken & Chips Meal (a)	4.87	1serve	10.43	10.43	10.43	11.93	11.86	12.14	2.4%	16.4%
Steam rice & chicken Meal (a)	4.87	1serve	5.00	5.00	5.00	6.67	6.67	6.67	0.0%	33.3%

12 Miscellaneous goods and services

Toilet Paper Sofan deluxe ply	8.52	250 sheets	1.00	1.00	1.00	1.19	1.20	1.21	1.0%	21.3%
Hair Gel	4.59	124 ml	4.61	4.61	4.61	5.29	5.29	5.50	4.1%	19.2%
Storage of remains (a)	4.41	per day	60.00	60.00	60.00	60.00	60.00	60.00	0.0%	0.0%
Basic Casket (a)	4.41	each	1966.67	1966.67	1966.67	1966.67	1966.67	1966.67	0.0%	0.0%
Standard Embalming (a)	4.41	1person	1500.00	1500.00	1500.00	1500.00	1500.00	1500.00	0.0%	0.0%
Toilet soap Protex (a)	4.38	90g	1.91	1.91	1.95	2.02	2.04	2.05	0.4%	4.7%
Diapers Soft Love (a)	4.19	5kg-10kg	7.37	7.37	7.37	8.01	7.51	7.56	0.6%	2.5%
Toilet soap Lux	3.87	85g	0.99	0.99	0.98	1.06	1.10	1.10	0.0%	12.8%
Paste Colgate regular flavour	3.43	140g	4.30	4.28	4.28	4.54	4.56	4.66	2.2%	8.8%
Diapers Huggies	1.30	16kg & over	39.50	39.47	39.47	39.68	39.68	39.73	0.1%	0.7%

Source : Samoa Bureau Statistics

(a) : New commodity from February 2016

(P) : Provisional figures

■ : Revised figures

Note : Please note unit of conversion was in pounds (lb's) but been converted into kilograms (kg)

Table 4. IMPORTED GOODS COMPONENT OF THE CONSUMER PRICE INDEX
(Base Period : Average Prices February 2016 = 100)

Group	All Items	Food and Non Alcoholic Beverages	Alcoholic Beverages, Tobacco and Narcotics	Clothing and Footwear	Housing, Water , Electricity, Gas and other Fuels	Furnishings, Household Equipment and Maintenance	Health	Transport	Communication	Recreation and Culture	Education	Restaurants	Miscellaneous goods and services
<i>Weights</i>	494.7	269.1	23.8	15.2	28.3	26.9	2.5	88.6	<i>n.a</i>	5.6	<i>n.a</i>	<i>n.a</i>	34.7
Ave - 2019	111.1	114.5	118.3	93.7	100.8	95.8	97.9	117.3		87.9			96.7
Ave - 2020	107.9	112.2	117.1	93.2	96.0	97.7	95.8	107.4		87.6			98.0
Ave - 2021	114.0	118.4	118.8	100.9	99.1	98.7	108.0	119.9		87.3			95.9
2021													
November	118.1	122.4	119.2	109.4	105.0	98.5	110.6	127.2		88.1			95.6
December	122.7	126.7	119.2	109.4	112.0	99.6	110.6	137.1		88.1			95.7
2022													
January	121.6	125.9	119.2	111.2	110.8	100.8	110.6	133.0		88.1			95.9
February	122.4	128.0	119.7	114.3	110.9	102.2	116.1	129.7		88.1			96.4
March	123.6	127.7	119.7	114.7	112.4	103.6	100.1	136.0		91.2			98.3
April	126.0	128.9	119.7	114.5	119.5	102.8	97.2	143.5		91.2			99.2
May	125.8	128.2	118.5	115.4	119.8	102.8	88.1	143.8		91.2			101.2
June	131.1	132.3	118.4	115.3	125.1	107.1	88.1	158.2		91.2			101.0
July	136.6	141.9	119.1	115.4	124.9	107.7	105.0	158.2		89.9			102.5
August	143.6	147.3	119.1	115.8	132.6	109.2	114.0	176.4		91.7			105.3
September	143.3	153.2	119.1	115.1	127.4	108.4	101.1	159.3		91.4			105.4
October	139.8	149.4	119.2	115.4	126.2	109.0	95.3	152.0		87.8			105.8
November (P)	133.8	138.2	119.2	114.1	126.8	107.4	97.4	152.0		91.2			106.9
<u>Percentage Change (P)</u>													
Nov 2022													
over	13.3%	13.0%	-0.1%	4.3%	20.8%	9.0%	-11.9%	19.5%		3.5%			11.9%
Nov 2021													
Nov 2022													
over	-4.3%	-7.5%	0.0%	-1.1%	0.5%	-1.5%	2.3%	0.0%		4.0%			1.1%
Oct 2022													

Source : Samoa Bureau Statistics

(P) : Provisional figures

■ : Revised figures

Note : n.a. Not applicable

Table 5. IMPORTED ITEMS UNDERLYING INDEX
(Base Period : Average Prices February 2016 = 100)

Group	All Items	Food and Non Alcoholic Beverages	Alcoholic Beverages, Tobacco and Narcotics	Clothing and Footwear	Housing, Water, Electricity, Gas and other Fuels	Furnishings, Household Equipment and Maintenance	Health	Transport	Communication	Recreation and Culture	Education	Restaurants	Miscellaneous goods and services
Weights	401.2	269.1	n.a	15.2	24.2	26.9	2.5	23.0	n.a	5.6	n.a	n.a	34.7
Ave - 2019	108.9	114.5		93.7	94.6	95.8	97.9	108.1		87.9			96.7
Ave - 2020	107.6	112.2		93.2	93.7	97.7	95.8	110.4		87.6			98.0
Ave - 2021	112.3	118.4		100.9	94.5	98.7	108.0	114.4		87.3			95.9
2021													
November	115.6	122.4		109.4	99.2	98.5	110.6	114.5		88.1			95.6
December	118.9	126.7		109.4	104.7	99.6	110.6	114.5		88.1			95.7
2022													
January	118.5	125.9		111.2	104.5	100.8	110.6	114.4		88.1			95.9
February	120.3	128.0		114.3	105.4	102.2	116.1	114.6		88.1			96.4
March	120.2	127.7		114.7	105.1	103.6	100.1	114.6		91.2			98.3
April	121.4	128.9		114.5	111.5	102.8	97.2	114.6		91.2			99.2
May	121.2	128.2		115.4	111.8	102.8	88.1	114.6		91.2			101.2
June	124.1	132.3		115.3	111.5	107.1	88.1	114.6		91.2			101.0
July	130.9	141.9		115.4	111.2	107.7	105.0	114.6		89.9			102.5
August	135.0	147.3		115.8	111.9	109.2	114.0	116.1		91.7			105.3
September	139.0	153.2		115.1	112.6	108.4	101.1	117.5		91.4			105.4
October	136.4	149.4		115.4	112.2	109.0	95.3	117.6		87.8			105.8
November (P)	128.9	138.2		114.1	112.9	107.4	97.4	117.8		91.2			106.9
<u>Percentage Change (P)</u>													
Nov 2022 over Nov 2021	11.6%	13.0%		4.3%	13.8%	9.0%	-11.9%	2.9%		3.5%			11.9%
Nov 2022 over Oct 2022	-5.5%	-7.5%		-1.1%	0.6%	-1.5%	2.3%	0.2%		4.0%			1.1%

Source : Samoa Bureau Statistics

(P) : Provisional figures

Note : n.a. Not applicable

Table 6. LOCAL GOODS COMPONENT OF THE CONSUMER PRICE INDEX
(Base Period : Average Prices February 2016 = 100)

Group	All Items	Food and Non Alcoholic Beverages	Alcoholic Beverages, Tobacco and Narcotics	Clothing and Footwear	Housing, Water, Electricity, Gas and other Fuels	Furnishings, Household Equipment and Maintenance	Health	Transport	Communication	Recreation and Culture	Education	Restaurants	Miscellaneous goods and services
Weights	505.3	134.6	104.6	6.0	91.3	3.9	2.2	59.9	51.5	0.4	19.7	22.4	8.8
Ave - 2019	105.5	107.3	116.5	93.8	93.2	100.3	102.5	102.3	104.2	100.0	113.5	103.3	102.3
Ave - 2020	105.3	106.8	120.7	94.2	87.6	100.3	103.0	100.1	104.2	100.0	114.9	109.4	102.3
Ave - 2021	105.9	105.6	122.2	93.8	90.3	100.3	103.0	99.6	107.1	100.0	109.9	111.2	102.3
2021													
November	108.1	115.7	122.1	94.2	83.9	100.3	103.0	98.2	115.9	100.0	109.4	111.7	102.3
December	108.2	115.8	122.3	94.2	83.9	100.3	103.0	97.9	115.9	100.0	109.4	111.7	102.3
2022													
January	108.3	115.1	122.2	94.2	83.9	100.3	103.0	98.2	115.8	100.0	109.4	118.3	102.3
February	108.4	115.4	122.7	94.2	83.9	100.5	103.0	98.2	115.8	100.0	109.4	118.3	102.3
March	108.9	116.6	123.3	94.2	83.9	100.5	103.0	98.2	115.8	100.0	109.4	118.3	102.3
April	108.6	115.8	123.1	94.2	83.9	100.5	103.0	98.2	115.8	100.0	109.4	118.3	102.3
May	109.0	116.9	123.5	94.2	83.9	100.5	103.0	98.2	115.8	100.0	109.4	118.3	102.3
June	111.2	122.4	123.6	94.2	83.9	100.5	103.0	100.1	115.8	100.0	109.4	128.3	102.3
July	114.4	123.9	123.9	90.4	83.9	100.6	103.0	107.9	133.7	100.0	109.4	128.5	102.3
August	116.4	129.5	124.4	90.6	84.7	100.6	103.0	110.6	133.7	100.0	109.4	129.2	102.3
September	117.1	129.9	124.4	89.8	84.7	100.8	103.0	113.7	133.7	100.0	109.4	133.8	102.3
October	115.9	126.7	124.3	91.1	84.7	100.9	103.0	110.6	133.7	100.0	109.4	133.2	102.3
November (P)	115.5	126.3	124.4	88.3	84.7	101.0	103.0	109.7	132.0	100.0	109.4	135.1	102.3
<u>Percentage Change (P)</u>													
Nov 2022													
over	6.9%	9.2%	1.9%	-6.2%	1.0%	0.7%	0.0%	11.6%	13.9%	0.0%	0.0%	21.0%	0.0%
Nov 2021													
Nov 2022													
over	-0.3%	-0.3%	0.0%	-3.1%	0.0%	0.1%	0.0%	-0.9%	-1.3%	0.0%	0.0%	1.5%	0.0%
Oct 2022													

Source : Samoa Bureau Statistics

(P) : Provisional figures

Table 7. LOCAL ITEMS UNDERLYING INDEX

(Base Period : Average Prices February 2016 = 100)

Group	All Items	Food and Non Alcoholic Beverages	Alcoholic Beverages, Tobacco and Narcotics	Clothing and Footwear	Housing, Water , Electricity, Gas and other Fuels	Furnishings, Household Equipment and Maintenance	Health	Transport	Communication	Recreation and Culture	Education	Restaurants	Miscellaneous goods and services
Weights	185.5	76.1	n.a	6.0	n.a	3.9	1.0	3.4	51.5	n.a	12.3	22.4	8.8
Ave - 2019	103.6	101.6		93.8		100.3	105.2	108.6	104.2		118.5	103.3	102.3
Ave - 2020	104.6	101.9		94.2		100.3	106.3	108.6	104.2		120.6	109.4	102.3
Ave - 2021	105.1	102.1		93.8		100.3	106.3	108.6	107.1		112.7	111.2	102.3
2021													
November	107.7	102.3		94.2		100.3	106.3	108.6	115.9		111.9	111.7	102.3
December	107.8	102.5		94.2		100.3	106.3	108.6	115.9		111.9	111.7	102.3
2022													
January	108.9	103.0		94.2		100.3	106.3	114.4	115.8		111.9	118.3	102.3
February	108.7	102.6		94.2		100.5	106.3	114.4	115.8		111.9	118.3	102.3
March	108.7	102.6		94.2		100.5	106.3	114.4	115.8		111.9	118.3	102.3
April	108.7	102.6		94.2		100.5	106.3	114.4	115.8		111.9	118.3	102.3
May	109.0	103.5		94.2		100.5	106.3	114.4	115.8		111.9	118.3	102.3
June	112.7	109.5		94.2		100.5	106.3	114.4	115.8		111.9	128.3	102.3
July	117.8	109.9		90.4		100.6	106.3	114.4	133.7		111.9	128.5	102.3
August	117.9	109.9		90.6		100.6	106.3	114.4	133.7		111.9	129.2	102.3
September	119.2	111.8		89.8		100.8	106.3	114.4	133.7		111.9	133.8	102.3
October	119.5	112.7		91.1		100.9	106.3	114.4	133.7		111.9	133.2	102.3
November (P)	119.8	114.2		88.3		101.0	106.3	114.4	132.0		111.9	135.1	102.3
<u>Percentage Change (P)</u>													
Nov 2022 over Nov 2021	11.2%	11.6%		-6.2%		0.7%	0.0%	5.3%	13.9%		0.0%	21.0%	0.0%
Nov 2022 over Oct 2022	0.2%	1.3%		-3.1%		0.1%	0.0%	0.0%	-1.3%		0.0%	1.5%	0.0%

Source : Samoa Bureau Statistics

(P) : Provisional figures

Note : n.a. Not applicable

Table 8. CONSUMER PRICE INDEX (AVERAGE ANNUAL INFLATION RATE).

(Base Period : Average Prices February 2016 = 100)

Group	All Items	Food and Non Alcoholic Beverages	Alcoholic Beverages, Tobacco and Narcotics	Clothing and Footwear	Housing, Water , Electricity, Gas and other Fuels	Furnishings, Household Equipment, and Maintenance	Health	Transport	Communication	Recreation and Culture	Education	Restaurants	Miscellaneous goods and services
Weights	1000.0	403.7	128.4	21.2	119.6	30.8	4.6	148.5	51.5	6.1	19.7	22.4	43.5
2019	1.0	1.0	4.1	-1.6	4.4	-1.6	3.1	-3.2	0.9	-4.2	2.8	4.4	0.0
2020	-1.6	-1.5	2.7	-0.3	-5.7	1.8	-0.9	-6.1	0.0	-0.3	1.2	5.9	1.0
2021	3.1	3.4	1.3	5.8	3.1	0.9	6.5	7.0	2.8	-0.3	-4.3	1.7	-1.6
2021													
November	1.8	1.2	1.4	4.7	2.1	1.0	6.4	4.7	1.9	-0.5	-3.9	1.9	-1.4
December	3.1	3.4	1.3	5.8	3.1	0.9	6.5	7.0	2.8	-0.3	-4.3	1.7	-1.6
January	4.5	5.3	1.2	6.9	5.3	0.7	6.5	9.2	3.7	0.1	-4.7	2.0	-1.9
February	5.7	7.0	1.1	8.4	6.6	1.0	6.5	11.0	4.7	0.4	-4.3	2.4	-1.9
March	6.7	8.5	1.0	10.0	7.8	1.2	5.8	12.5	5.6	1.1	-4.0	2.7	-1.7
April	7.6	10.0	0.9	11.5	7.8	1.3	5.1	13.8	6.5	1.6	-3.6	3.0	-1.4
May	8.2	11.0	0.8	13.1	7.9	1.7	3.8	14.1	7.4	1.9	-3.2	3.4	-0.9
June	8.8	12.2	0.6	14.5	6.3	2.4	2.4	14.6	8.4	2.0	-2.8	4.5	-0.1
July	9.5	13.6	0.7	13.6	4.7	3.1	1.7	15.3	10.7	2.1	-2.4	5.6	0.7
August	10.3	14.9	0.8	12.9	3.2	3.8	1.0	16.9	13.1	2.5	-2.0	6.7	1.5
September	11.0	16.2	0.9	12.1	1.9	4.4	-0.1	17.5	15.5	2.9	-1.6	8.4	2.3
October	11.3	16.8	0.9	11.3	0.1	5.1	-1.5	17.9	15.8	2.8	-1.2	10.0	3.2
November (P)	11.3	16.3	1.0	10.4	0.6	5.7	-2.7	18.2	16.0	3.0	-0.8	11.8	4.1

Source : Samoa Bureau Statistics

(P) : Provisional figures

■ : Revised figures

Table 9 Consumer Price Index (Percentage change and Average Annual Inflation)

(Base Period: Average Prices February 2016 = 100)

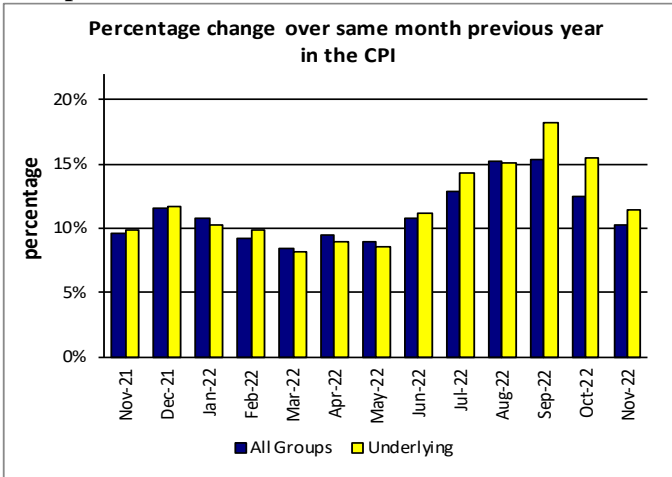
Period	CPI ALL ITEMS	Percentage change over previous month	Last 12 months over previous 12 months	UNDERLYING ALL ITEMS	Percentage change over previous month	Last 12 months over previous 12 months	LOCAL COMPONENT	Percentage change over previous month	Last 12 months over previous 12 months	IMPORTED COMPONENT	Percentage change over previous month	Last 12 months over previous 12 months
2019	108.3	-	1.0	107.2	-	0.5	105.5	-	2.8	111.1	-	-0.7
2020	106.6	-	-1.6	106.6	-	-0.5	105.3	-	-0.2	107.9	-	-2.9
2021	109.9	-	3.1	110.1	-	3.2	105.9	-	0.6	114.0	-	5.7
2021												
November	113.0	-0.5	1.8	113.1	-0.4	1.9	108.1	-0.9	0.2	118.1	-0.1	3.4
December	115.3	2.0	3.1	115.4	2.0	3.2	108.2	0.0	0.6	122.7	3.9	5.7
2022												
January	114.8	-0.4	4.5	115.4	0.1	4.2	108.3	0.1	1.4	121.6	-0.9	7.6
February	115.3	0.4	5.7	116.6	1.0	5.3	108.4	0.2	2.0	122.4	0.7	9.3
March	116.2	0.7	6.7	116.6	0.0	6.2	108.9	0.4	2.7	123.6	1.0	10.8
April	117.2	0.9	7.6	117.4	0.7	7.0	108.6	-0.3	3.1	126.0	2.0	12.1
May	117.3	0.1	8.2	117.3	-0.1	7.6	109.0	0.4	3.6	125.8	-0.2	12.7
June	121.0	3.2	8.8	120.5	2.7	8.4	111.2	2.0	3.9	131.1	4.2	13.6
July	125.3	3.6	9.5	126.7	5.2	9.4	114.4	2.9	4.4	136.6	4.2	14.5
August	129.9	3.6	10.3	129.6	2.3	10.4	116.4	1.8	4.9	143.6	5.1	15.6
September	130.1	0.2	11.0	132.7	2.4	11.4	117.1	0.6	5.5	143.3	-0.2	16.4
October	127.7	-1.8	11.3	131.1	-1.2	11.9	115.9	-1.1	5.7	139.8	-2.4	16.6
November (P)	124.6	-2.5	11.3	126.0	-3.8	12.0	115.5	-0.3	6.0	133.8	-4.3	16.4

Source : Samoa Bureau Statistics

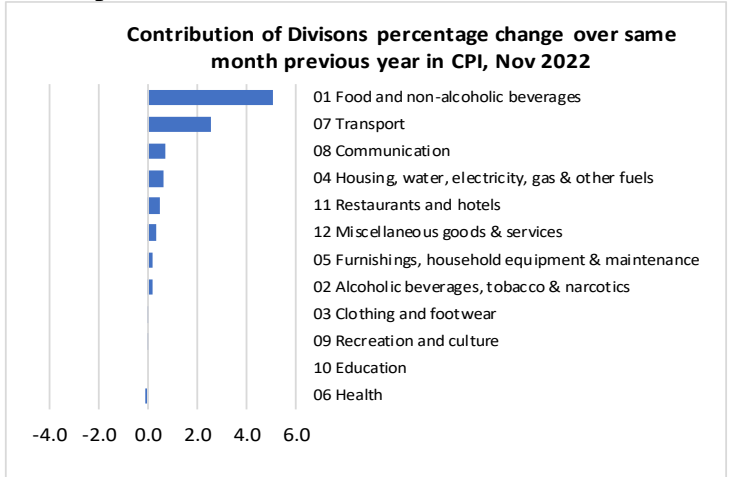
(P) : Provisional figures

■ : Revised figures

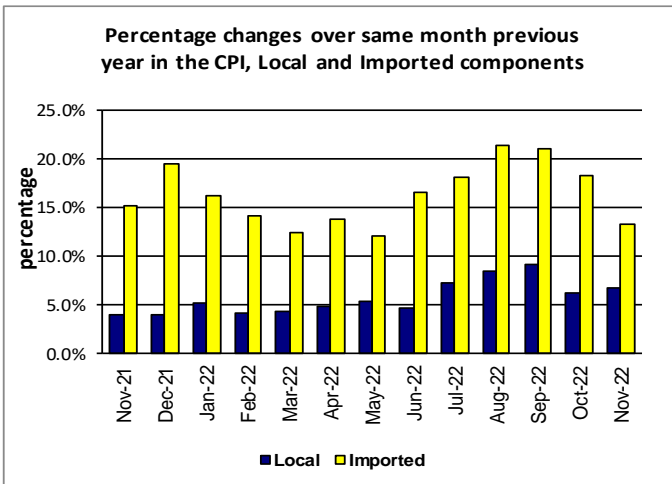
Graph.5



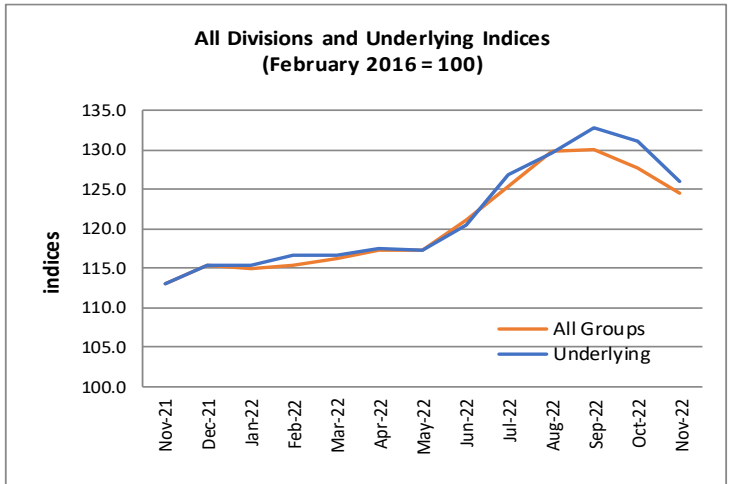
Graph.6



Graph.7



Graph.8



Graph.9

