

Please address all correspondence
To Government Statistician
In reply, please quote the file reference



File Ref: CPI 9/2022

GOVERNMENT OF SAMOA

SAMOA BUREAU OF STATISTICS

CONSUMER PRICE INDEX SEPTEMBER 2022

Key findings:

The Consumer Price Index for September 2022 increased by 15.3 percent compared to the same month last year.

- The Communication index increased 28.4 percent.
- The Food & Non Alcoholic Beverages index increased by 23.4 percent.
- The Transport index also increased by 21.6 percent.

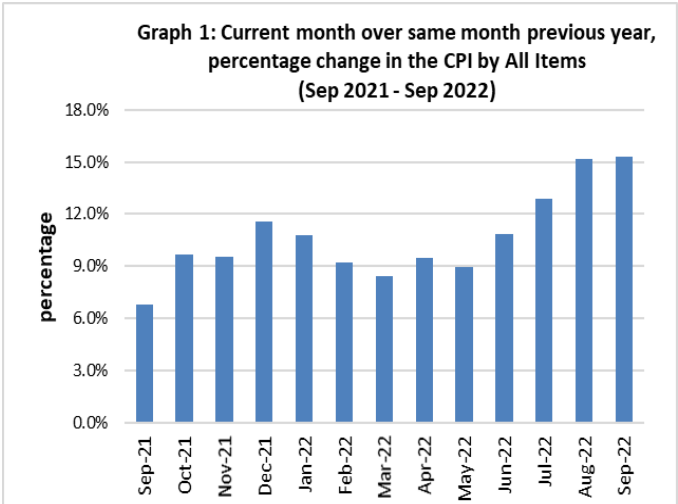
The Average Annual Inflation for the year ended September 2022 was 11.0 percent.

The CPI rose 0.2 percent from August 2022.

SUMMARY

The Consumer Price Index for September 2022 rose 15.3 percent compared to September 2021. It also went up 0.2 percent in comparison to the previous month. This was mainly influenced by the increase in the Imported goods component by 21.0 percent from the same month last year, as a result of higher prices for fuel, imported food, building material, toiletries, washing soap and mosquito repellent products.

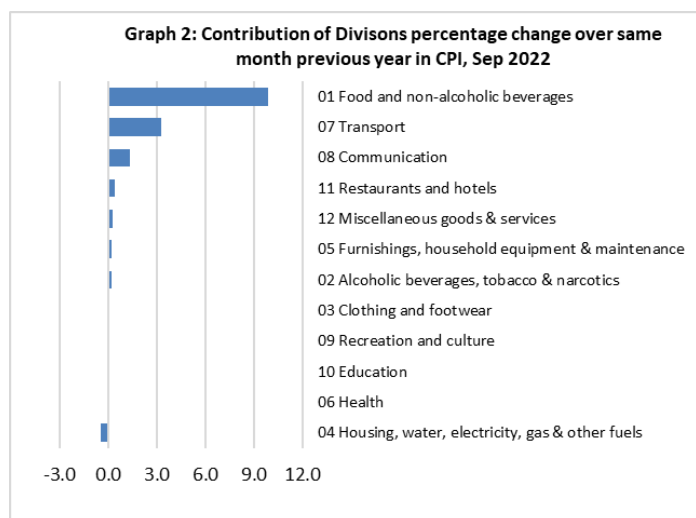
The Local goods component also contributed to the increase when it went up by 9.1 percent on a year-on-year (y-o-y) basis, due to higher prices for local food and meals, phone calls, internet and airline fares. Graph 1 shows the percentage changes over the same month last year in the Consumer Price Index by all Divisions from September 2021 to September 2022.



Source : Samoa Bureau of Statistics

Total All Divisions Contribution

As depicted in Graph 2, Food & Non Alcoholic Beverages was the largest contributor to the 15.3 percent rise in the CPI in September 2022, with a contribution of 9.9 percentage-points (pp) to the overall increase in September 2022. The most significant drivers of this within the group were taamu and cooking oil which more than doubled their prices in September 2021. Other products which contributed to the increase were chicken leg quarter (up 41.6%), taro (up 60.3%), fresh fish (up 36.9%), turkey wing (up 37.6%), ripe banana (up 45.8%) and green banana (52.5%). The next largest contributor was Transport with a contribution of 3.3 percentage-points, increasing 21.6% compared to September 2021. The greatest drivers of this increase were petrol (up 31.2%), airline fares (up 71.4%) and diesel (up 52.6%). Communication also contributed 1.4 percentage-points due to the increase in internet and mobile phone calling per minute.

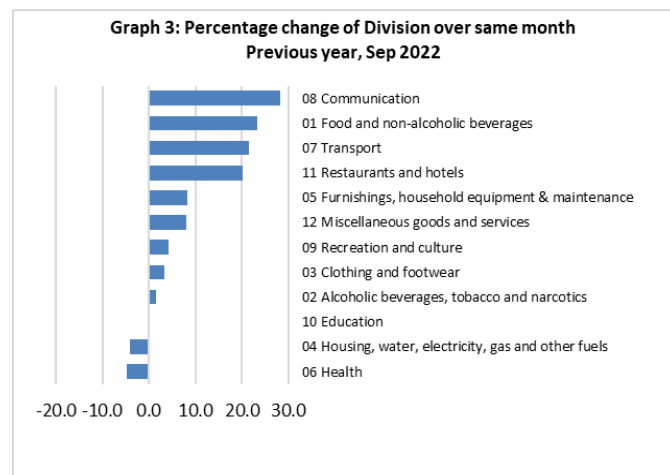


Source : Samoa Bureau of Statistics

Consumer Price Index (% Change)

Graph 3 shows the percentage change for all Divisions (groups) in September 2022 in comparison to September 2021. Communication had the largest increase of 28.4 percent followed by Food & Non Alcoholic Beverages which rose 23.4 percent. Other groups such as, Transport, Restaurant, Furnishing & Household Equipment & Maintenance, Miscellaneous Goods & Services, Recreation & Culture, Clothing & Footwear and Alcoholic Beverages & Tobacco indices recorded increases of 21.6, 20.1, 8.3, 8.0, 4.2, 3.3 and 1.5 percent respectively.

On the other hand, the Health index fell by 4.7 percent. Housing, Water, Electricity Gas & Other Fuel index was also down 4.2 percent. No changes were recorded for the Education index.



Source : Samoa Bureau of Statistics

Imported Goods Component

The Imported goods component of the Consumer Price Index registered an increase of 21.0 percent when compared to the same month last year. This increase was mainly due to higher prices recorded for fuel (petrol, diesel and kerosene), cement, cooking gas, timber, chicken leg quarter, rice, butter, turkey wings, cooking oil, flour, onion, cup noodle, corned beef, potatoes, vermicelli, toilet paper, washing soap and mosquito coil.

Local Goods Component

Increased prices recorded for airline fares, mobile phone calling per minute, internet, taro, fresh fish, banana, round pancake, mineral water, coconut, taamu and meals have resulted in the 9.1 percent increase in the local goods component.

Communication Index

Increased prices recorded for internet data bundle (46.7%) and mobile phone calling per minute (24.1%) led to the 28.4 percent increase in the Communication index.

Food and Non-Alcoholic Beverages Index

The increase of 23.4 percent in the Food & Non-Alcoholic Beverages index was influenced by higher prices recorded for chicken leg quarter (41.6%), taro (60.3%), rice (26.7%), fresh fish (piece 20.4%, string 47.9% and large 42.4%), round pancake (33.3%), turkey wing (37.6%), cooking oil (109.5%), ripe banana (45.8%), green

banana (52.5%), coconut (37.7%), mineral water (26.3%) and taamu (117.3%)

Transport Index

The increases in petrol of 31.2%, airline fares (Apia-Pago-Apia) of 97.5%, Apia-Auckland-Apia fares of 45.4% and diesel of 52.6%, are reflected in the 21.6 percent increase in the Transport index. However, it decline 6.0 percent compared to August 2022.

Restaurants Index

The Restaurants index recorded an increase of 20.1 percent due to increased prices recorded for takeaway meal.

Furnishings, Household Equipment & Maintenance Index

Furnishings, Household Equipment & Maintenance index rose 8.3 percent due to the increase in washing soap, mosquito coil, clothing chest and sideboard (sefe).

Miscellaneous Goods and Services Index

Higher prices recorded for toilet paper, hair gel, toilet soap, diapers and toothpaste is reflected in the 8.0 percent increase in the Miscellaneous Goods & Services index.

Recreation and Culture Index

Increased prices recorded for weedkiller, exercise book and television (LCD) is reflected in the 4.2 percent increase in the Recreation and Culture index.

Clothing and Footwear Index

An increase of 3.3 percent in the Clothing and Footwear index was a reflection of higher prices recorded for School uniform, cargo short, ie faitaga, panties, ie solosolo and shirt (long sleeve).

Alcoholic Beverages and Tobacco Index

The 1.5 percent increase in the Alcoholic Beverages and Tobacco index was a result of higher prices recorded for beer and Samoan kava.

Health Index

The 4.7 percent decrease in the Health index was influenced by lower prices recorded for medicine (amoxicillin tablets).

Housing, Water, Electricity, Gas and other Fuels Index

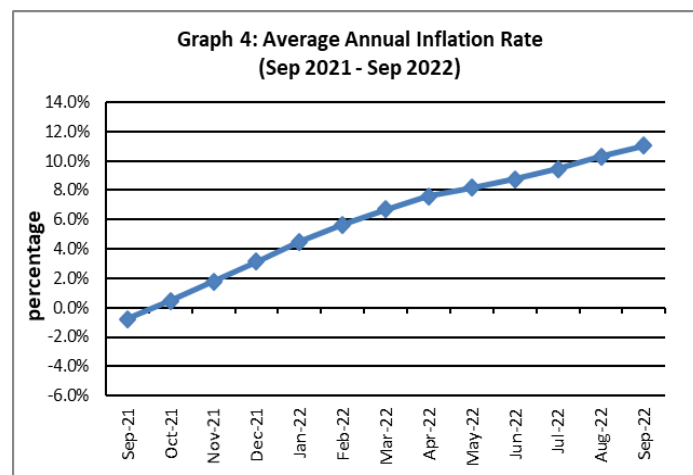
Lower prices recorded for electricity cash-power (16.7%) and treated water (19.8%) led to the 4.2 percent decrease in the Housing, Water, Electricity, Gas and other Fuels index.

Underlying Indices ^{1/}

The All Items Underlying Index for September 2022 registered an increase of 18.2 percent when compared to September 2021. It also increased by 2.4 percent when compared to August 2022. Both the Imported and Local Items Underlying Indices recorded increases of 19.7 and 14.5 percent respectively.

Inflation Rate

The average annual inflation rate for the year ended September 2022 was 11.0 percent. For the twelve months ending September 2021, the inflation rate was negative 0.8 percent. Presented in Graph 4 is the Average annual inflation rate (Sep 2021 - Sep 2022).



Source : Samoa Bureau of Statistics

The attached Tables and Graphs provide the users with more detailed analysis.

Technical Notes:

The Consumer Price (CPI) measures the rate of inflation for Samoa. It is designed to measure the change in prices for the goods purchased by households in Samoa. The CPI measures the change in prices by comparing the prices for a basket of goods and services at the collection period with the price for the same goods in a base period.

The basket of goods that is priced is based on the average expenditures of households as recorded in the Household Income and Expenditure Survey (HIES). The HIES survey identifies how much households spend on different items. The more households spend on an item on average, the more important it is to the price index, and the higher the weight in the index.

^{1/} Monthly movements in the 'headline' CPI series can be volatile. This volatility reflects price changes in particular items that may be due, among other factors, to fluctuations in commodity markets and agricultural conditions, policy changes, or seasonal or infrequent price resetting.

Underlying inflation is a measure of inflation that excludes certain items that face volatile price movements. Underlying inflation eliminates products that can have temporary price shocks because these shocks can diverge from the overall trend of inflation and give a false measure of inflation.



Date of release: 14th October 2022

The next Consumer Price Index will be released on 18th November 2022.

Leota Aliielua Salani
GOVERNMENT STATISTICIAN/(CEO)

Table 1. CONSUMER PRICE INDEX.

(Base Period : Average Prices February 2016 = 100)

Group	All Items	Food and Non Alcoholic Beverages	Alcoholic Beverages, Tobacco and Narcotics	Clothing and Footwear	Housing, Water, Electricity, Gas and other Fuels	Furnishings, Household Equipment, and Maintenance	Health	Transport	Communication	Recreation and Culture	Education	Restaurants	Miscellaneous goods and services
<i>Weights</i>	1000.0	403.7	128.4	21.2	119.6	30.8	4.6	148.5	51.5	6.1	19.7	22.4	43.5
<i>Ave - 2019</i>	108.3	112.1	116.8	93.8	95.0	96.4	100.0	111.3	104.2	88.7	113.5	103.3	97.8
<i>Ave - 2020</i>	106.6	110.4	120.0	93.5	89.6	98.1	99.2	104.4	104.2	88.5	114.9	109.4	98.8
<i>Ave - 2021</i>	109.9	114.1	121.6	98.9	92.4	98.9	105.7	111.7	107.1	88.2	109.9	111.2	97.2
<i>2021</i>													
<i>September</i>	112.8	117.9	121.6	104.5	98.9	99.2	107.0	115.9	104.2	88.3	109.4	111.4	96.9
<i>October</i>	113.6	118.1	121.6	104.9	101.0	98.9	107.0	115.1	115.9	89.0	109.4	111.4	96.9
<i>November</i>	113.0	120.1	121.6	105.1	88.9	98.7	107.0	115.5	115.9	89.0	109.4	111.7	96.9
<i>December</i>	115.3	123.1	121.7	105.1	90.5	99.7	107.0	121.3	115.9	89.0	109.4	111.7	97.1
<i>2022</i>													
<i>January</i>	114.8	122.3	121.7	106.4	90.2	100.7	107.0	119.0	115.8	89.0	109.4	118.3	97.2
<i>February</i>	115.3	123.8	122.1	108.6	90.3	102.0	109.9	117.0	115.8	89.0	109.4	118.3	97.6
<i>March</i>	116.2	124.0	122.6	108.9	90.6	103.2	101.5	120.8	115.8	91.8	109.4	118.3	99.1
<i>April</i>	117.2	124.5	122.4	108.8	92.3	102.5	99.9	125.2	115.8	91.8	109.4	118.3	99.8
<i>May</i>	117.3	124.5	122.6	109.4	92.4	102.5	95.1	125.4	115.8	91.8	109.4	118.3	101.4
<i>June</i>	121.0	129.0	122.6	109.3	93.6	106.3	95.1	134.8	115.8	91.8	109.4	128.3	101.2
<i>July</i>	125.3	135.9	123.0	108.4	93.6	106.8	104.1	137.9	133.7	90.6	109.4	128.5	102.5
<i>August</i>	129.9	141.4	123.4	108.7	96.0	108.1	108.8	149.9	133.7	92.3	109.4	129.2	104.7
<i>September (P)</i>	130.1	145.5	123.4	108.0	94.8	107.5	102.0	140.9	133.7	92.0	109.4	133.8	104.7
<u>Percentage Change (P)</u>													
<i>Sep 2022 over Sep 2021</i>	15.3%	23.4%	1.5%	3.3%	-4.2%	8.3%	-4.7%	21.6%	28.4%	4.2%	0.0%	20.1%	8.0%
<i>Sep 2022 over Aug 2022</i>	0.2%	2.9%	0.0%	-0.7%	-1.3%	-0.6%	-6.3%	-6.0%	0.0%	-0.4%	0.0%	3.5%	0.0%

Source : Samoa Bureau Statistics

(P) : Provisional figures

Table 2. ALL ITEMS UNDERLYING INDEX

(Base Period : Average Prices February 2016 = 100)

Group	All Items	Food and Non Alcoholic Beverages	Alcoholic Beverages, Tobacco and Narcotics	Clothing and Footwear	Housing, Water, Electricity, Gas and other Fuels	Furnishings, Household Equipment, and Maintenance	Health	Transport	Communication	Recreation and Culture	Education	Restaurants	Miscellaneous goods and services
<i>Weights</i>	586.7	345.3	<i>n.a</i>	21.2	24.2	30.8	3.5	26.4	51.5	5.6	12.3	22.4	43.5
Ave - 2019	107.2	111.6		93.8	94.6	96.4	100.1	108.1	104.2	87.9	118.5	103.3	97.8
Ave - 2020	106.6	109.9		93.5	93.7	98.1	98.9	110.1	104.2	87.6	120.6	109.4	98.8
Ave - 2021	110.1	114.8		98.9	94.5	98.9	107.5	113.6	107.1	87.3	112.7	111.2	97.2
2021													
September	112.3	118.8		104.5	94.0	99.2	109.3	113.5	104.2	87.4	111.9	111.4	96.9
October	113.5	118.8		104.9	97.5	98.9	109.3	113.8	115.9	88.1	111.9	111.4	96.9
November	113.1	117.9		105.1	99.2	98.7	109.3	113.8	115.9	88.1	111.9	111.7	96.9
December	115.4	121.4		105.1	104.7	99.7	109.3	113.8	115.9	88.1	111.9	111.7	97.1
2022													
January	115.4	120.9		106.4	104.5	100.7	109.3	114.4	115.8	88.1	111.9	118.3	97.2
February	116.6	122.4		108.6	105.4	102.0	113.2	114.5	115.8	88.1	111.9	118.3	97.6
March	116.6	122.1		108.9	105.1	103.2	102.0	114.5	115.8	91.2	111.9	118.3	99.1
April	117.4	123.1		108.8	111.5	102.5	99.9	114.5	115.8	91.2	111.9	118.3	99.8
May	117.3	122.8		109.4	111.8	102.5	93.5	114.5	115.8	91.2	111.9	118.3	101.4
June	120.5	127.2		109.3	111.5	106.3	93.5	114.5	115.8	91.2	111.9	128.3	101.2
July	126.7	134.9		108.4	111.2	106.8	105.4	114.5	133.7	89.9	111.9	128.5	102.5
August	129.6	139.1		108.7	111.9	108.1	111.7	115.8	133.7	91.7	111.9	129.2	104.7
September (P)	132.7	144.1		108.0	112.6	107.5	102.6	117.1	133.7	91.4	111.9	133.8	104.7
<u>Percentage Change (P)</u>													
Sep 2022													
over	18.2%	21.3%		3.3%	19.8%	8.3%	-6.1%	3.2%	28.4%	4.6%	0.0%	20.1%	8.0%
Sep 2021													
Sep 2022													
over	2.4%	3.6%		-0.7%	0.6%	-0.6%	-8.1%	1.1%	0.0%	-0.4%	0.0%	3.5%	0.0%
Aug 2022													

Source : Samoa Bureau Statistics

(P) : Provisional figures

Note : n.a. Not applicable

Table 3. AVERAGE RETAIL PRICES OF SELECTED COMMODITIES

Commodities	Wt	Unit	2021			2022			Sep-22	
			Jul	Aug	Sep	Jul	Aug	Sep (P)	% chng from prev mnth	%chng from Sep 21
01 Food and non-alcoholic beverages										
Chicken leg quarters	62.2	kg	4.93	5.24	5.08	6.17	6.61	7.20	8.9%	41.6%
Raw Sugar	21.3	kg	2.80	2.82	2.91	3.12	3.18	3.20	0.5%	9.9%
Bread	17.2	loaf	1.64	1.64	1.64	1.78	1.78	1.80	1.3%	9.9%
Corned Beef (a)	15.9	340 grms	8.55	8.45	8.55	9.02	9.02	9.52	5.5%	11.3%
Taro	15.2	kg	2.00	2.59	2.58	4.14	4.55	4.13	-9.1%	60.3%
Re-packed medium grain rice	13.4	kg	2.63	2.64	2.65	3.15	3.33	3.35	0.6%	26.7%
Prepacked medium grain rice (a)	13.4	907 grms	2.77	2.77	2.77	2.88	2.88	2.88	0.0%	4.2%
Canned fish betw een \$3.00 and \$3.99 Natural Oil	12.7	425 grms	3.22	3.25	3.25	3.25	3.24	3.25	0.2%	-0.2%
Bongo	10.2	20 grms	0.80	0.83	0.83	0.85	0.88	0.90	2.3%	8.4%
Keke Saina Biscuits (a)	9.2	pkt 10	6.13	6.13	6.14	6.29	6.46	6.63	2.6%	7.9%
Ice Cream (a)	9.2	2 ltr	15.52	15.43	15.58	17.08	17.27	17.27	0.0%	10.8%
Ramen	9.0	85 gms	1.11	1.11	1.11	1.16	1.23	1.23	0.0%	11.0%
Fish (Plece)	7.9	kg	24.64	24.09	24.32	24.75	28.78	29.28	1.7%	20.4%
Butter	7.7	454 grms	16.06	16.14	16.14	18.47	18.47	18.47	0.0%	14.4%
Round Pancake (a)	7.5	sml	0.15	0.15	0.15	0.20	0.20	0.20	0.0%	33.3%
Mutton Flaps	6.6	kg	22.90	24.13	24.84	25.22	25.80	25.48	-1.3%	2.5%
Canned fish \$4:00 or over N/Oil	6.4	425 grms	4.89	4.83	4.82	4.74	4.76	4.77	0.2%	-1.0%
Canned fish under \$3.00 in N/Oil	6.4	425 grms	2.68	2.67	2.67	2.85	2.85	2.83	-0.6%	6.3%
Wings Turkey	6.3	kg	8.63	9.36	9.66	12.46	12.81	13.30	3.8%	37.6%
Fish (string)	6.0	kg	11.11	10.12	10.19	11.55	14.56	15.07	3.5%	47.9%
Fish (large)	6.0	kg	15.67	19.69	17.51	20.18	25.41	24.93	-1.9%	42.4%
Cooking vegetable oil (a)	5.9	ltr	5.03	5.15	5.18	10.75	10.70	10.86	1.5%	109.5%
Sausage beef	5.8	kg	14.40	14.32	14.32	15.03	15.16	15.07	-0.6%	5.2%
Chinese Cabbage	5.5	kg	5.70	4.51	4.89	6.01	5.17	5.21	0.6%	6.5%
Eggs medium size	5.4	doz	7.18	7.22	7.26	7.13	6.91	7.13	3.2%	-1.8%
Plain w hite flour	5.3	kg	2.33	2.33	2.31	2.88	2.85	2.88	1.4%	25.0%
Onions	5.2	kg	3.51	3.23	3.24	3.95	3.99	4.06	1.7%	25.4%
Milk	5.1	1ltr	3.75	3.75	3.75	4.33	4.33	4.34	0.2%	15.7%
Soft Drink Coke	5.1	750 mls	3.00	3.00	3.00	3.10	3.08	3.10	0.6%	3.3%
Soft Drink Taxi	5.1	330 mls	1.82	1.82	1.82	1.90	1.73	1.92	10.6%	5.5%
Milk	4.8	1ltr	3.81	3.85	3.85	4.27	4.25	4.28	0.7%	11.2%
Salted Beef	4.7	kg	19.85	19.95	20.21	22.15	22.10	22.10	0.0%	9.3%
Canned fish Soifua in Tomato Sauce	4.5	425 grms	2.53	2.53	2.53	2.44	2.46	2.46	0.0%	-2.5%
CCK Coffee	4.5	100 grms	3.94	3.94	3.94	3.94	3.94	3.94	0.0%	0.0%
Sky Flakes Biscuits	4.3	850 grms	16.63	16.74	16.74	18.64	18.64	18.64	0.0%	11.3%
Stew ing beef	4.2	kg	16.05	16.04	16.05	16.49	17.19	17.39	1.2%	8.4%
Koko Samoa	4.1	cup	16.16	17.47	16.62	18.70	15.70	16.85	7.3%	1.4%
Corned Beef Pacific	3.6	340 grms	15.60	15.67	15.67	16.85	17.35	17.46	0.6%	11.4%
Ramen kimchi (bow l)	3.4	86 grms	2.57	2.58	2.67	3.22	3.30	3.38	2.3%	26.6%
Soy Sauce Mushroom	3.3	750 grms	3.03	2.99	3.06	3.40	3.44	3.46	0.5%	13.1%
Pork Pig Trotter	3.1	kg	7.26	7.46	7.78	8.19	8.76	8.25	-5.8%	6.1%
Conned Beef Palm	3.0	340 grms	13.51	13.40	13.52	16.69	17.12	17.12	0.0%	26.6%
Ripe Banana (a)	2.7	kg	3.41	3.18	3.09	3.70	3.77	4.51	19.4%	45.8%
Tang pow der (a)	2.5	25 grms	0.65	0.65	0.65	0.65	0.65	0.65	0.0%	0.0%
Minties Pascall (a)	2.5	200 grms	12.90	12.90	12.90	12.50	12.50	12.50	0.0%	-3.1%

Potatoes	2.4	kg	3.87	3.80	3.80	4.58	4.55	4.70	3.2%	23.7%
Green Banana	2.3	kg	1.11	0.96	1.09	1.47	1.60	1.67	3.8%	52.5%
Apple small	2.3	each	1.71	1.78	1.62	1.68	1.51	1.54	2.1%	-4.9%
Mineral Water	2.3	bottle	1.46	1.48	1.48	1.54	1.87	1.87	0.0%	26.3%
Chocolate Cake (a)	2.1	sml	21.50	21.50	21.50	21.50	21.50	21.50	0.0%	0.0%
Cucumbers	2.1	kg	4.57	4.55	4.61	5.26	4.71	4.99	6.0%	8.2%
Instant Nescafe Coffee	2.0	50 grms	6.78	6.82	6.82	7.14	7.12	7.62	7.0%	11.7%
Mutton Neck	1.9	kg	22.15	22.64	24.13	22.89	24.85	25.31	1.9%	4.9%
Vermicelli Lungken	1.9	454 grms	3.48	3.46	3.47	4.29	4.34	4.42	1.8%	27.3%
Tomatoes	1.8	kg	14.35	16.01	12.89	15.67	14.51	11.98	-17.4%	-7.1%
Sausage Pork	1.7	kg	14.38	14.38	14.38	14.49	14.61	14.52	-0.6%	1.0%
Bell Tea Bags	1.6	150 grms	11.11	11.11	11.18	11.36	11.18	11.88	6.3%	6.3%
Samco Tw isties	1.4	20 grms	0.70	0.70	0.70	0.73	0.73	0.76	3.9%	8.2%
Matured husked Coconuts	1.3	kg	0.92	1.02	1.01	1.13	1.09	1.25	13.9%	23.9%
Matured Un husked Coconuts (a)	1.3	kg	0.63	0.64	0.61	0.77	0.80	0.85	6.3%	37.7%
Taamu	1.1	kg	3.46	3.84	5.53	7.51	11.90	12.01	0.9%	117.3%
Round Cabbage Round	1.1	kg	7.06	6.54	6.85	8.84	7.13	7.90	10.7%	15.3%

02 Alcoholic beverages, tobacco and narcotics

Lager Beer	37.9	355 mls	3.66	3.65	3.65	3.76	3.79	3.80	0.2%	4.0%
Pall Mall Filter Cigarettes (Red)	24.3	20 rolls	14.60	14.60	14.60	14.60	14.60	14.60	0.0%	0.0%
Pall Mall Menthol Cigarettes (Green)	24.3	20 rolls	14.60	14.60	14.60	14.60	14.60	14.60	0.0%	0.0%
Beer (a)	16.3	330 mls	3.53	3.51	3.55	3.68	3.69	3.68	-0.3%	3.5%
Tobacco (a)	12.6	30 grms	15.00	15.00	15.00	15.00	15.00	15.00	0.0%	0.0%
Vodka Niu Spirit (a)	3.8	Niu / 2 ltr	66.82	66.82	66.82	66.82	66.82	66.82	0.0%	0.0%
Whisky Jim Bean Spirit (a)	3.8	1 ltr	92.75	92.75	92.75	91.75	91.75	91.75	0.0%	-1.1%
Paper Cigarettes	3.6	50 sheets	1.70	1.70	1.70	1.70	1.70	1.70	0.0%	0.0%
Samoan kava	1.8	pkt	39.11	38.67	34.44	39.44	43.70	42.67	-2.4%	23.9%

03 Clothing and footwear

Uniform le Faitaga College boys	4.3	size 8-10	37.00	37.00	37.00	38.33	38.33	38.33	0.0%	3.6%
Uniform Pa'ave (a)	3.7	size 7	37.33	37.33	37.33	42.67	42.67	42.67	0.0%	14.3%
soft Jandals	2.5	10.5 size	9.25	9.25	9.25	9.25	9.25	9.28	0.4%	0.4%
mamanu palama Puletasi (a)	2.3	medium	150.00	150.00	150.00	125.00	125.00	125.00	0.0%	-16.7%
Solosolo cotton print	2.2	42 inch	11.87	11.77	11.77	12.58	12.58	12.10	-3.8%	2.8%
Cargo shorts (a)	1.8	38 size	88.25	88.25	88.25	93.00	93.00	93.00	0.0%	5.4%
Shirt short sleeves men Aloha shirt (a)	1.1	men / XL	55.23	55.23	55.23	56.79	57.35	55.60	-3.1%	0.7%
Shirt long sleeves men	1.1	16.5 size	37.23	37.24	37.24	37.13	37.75	37.75	0.0%	1.4%
Shoes Nike Running shoes (a)	0.8	size 9	258.50	258.50	258.50	258.50	258.50	258.50	0.0%	0.0%
Faitaga suiting le Faitaga	0.7	36/38 size	33.80	33.80	33.80	35.80	36.05	35.80	-0.7%	5.9%
Woman Nylon Panties	0.6	medium	5.22	5.13	4.80	4.67	5.00	5.00	0.0%	4.2%

04 Housing, water, electricity, gas and other fuels

Electricity Cashpower	50.6	kw h	0.67	0.69	0.69	0.58	0.58	0.58	0.0%	-16.7%
Reservoir treated Water	28.5	15-40 m3	1.67	1.67	1.67	1.34	1.34	1.34	0.0%	-19.8%
Liquid gas	15.8	9kg	59.25	59.25	59.25	71.80	71.80	72.05	0.3%	21.6%
Government house Rent	12.2	2 b/room	650.00	650.00	650.00	650.00	680.00	680.00	0.0%	4.6%
Kerosene	4.1	1 ltr	2.20	2.28	2.31	3.53	4.36	3.68	-15.7%	59.3%
High gloss Paint High gloss	3.5	4 ltrs	74.92	75.58	76.08	82.75	82.75	83.75	1.2%	10.1%
Plus 2 plastic Paint	3.5	4 ltrs	44.40	45.40	45.80	46.60	46.60	48.00	3.0%	4.8%
NZ or Australia Cement	0.8	40 kg	23.36	23.71	23.93	41.50	45.24	45.31	0.2%	89.4%
Dressed per Timber 2x4	0.7	meter	8.50	9.22	9.41	10.84	11.30	10.89	-3.6%	15.7%

05 Furnishings, household equipment and routine household maintenance

Washing powder (a)	6.3	200 grms	1.87	1.87	1.87	1.98	1.99	1.96	-1.7%	4.8%
Soap yellow Washing soap	5.9	bar	2.79	2.79	2.83	3.43	3.47	3.45	-0.5%	22.2%
Mosquito coil	4.4	10 coil	1.30	1.30	1.30	1.48	1.55	1.55	0.0%	19.2%
Mattress single Futon Mattress (a)	3.8	4 inch	155.67	155.67	155.67	163.17	163.17	159.83	-2.0%	2.7%
Live Babysitting (a)	3.8	1 week	142.50	142.50	142.50	142.50	142.50	142.50	0.0%	0.0%
Common brand ltr Refridgerator	2.5	331-335 ltr	2189.52	2311.32	2321.32	2342.52	2342.52	2402.52	2.6%	3.5%
Gold Power washing powder	1.7	180 grms	1.67	1.67	1.67	1.67	1.67	1.67	0.0%	0.0%
Eveready AA size Batteries	1.2	AA 1/4 siz	3.84	3.84	3.84	3.84	3.99	3.84	-3.6%	0.0%
Knife tramontina Bush knife	0.9	24 inch	28.36	28.61	28.61	29.61	29.61	29.61	0.0%	3.5%
Stove Kerosene stove	0.2	2 burner	132.50	112.50	112.50	112.50	112.50	112.50	0.0%	0.0%
Glass basic no design Tumblers (a)	0.1	medium	17.46	17.46	17.46	17.46	17.46	17.46	0.0%	0.0%
Seife 3 shelves	0.1	48*48 inch	620.00	620.00	620.00	657.50	657.50	695.00	5.7%	12.1%
Chest flat top Clothing chest	0.0	medium	500.00	500.00	500.00	562.50	562.50	595.00	5.8%	19.0%

06 Health

Amoxicillin 500mg tablets (a)	2.5	20 tablets	8.00	8.50	8.50	8.70	9.07	8.23	-9.2%	-3.1%
Hospital Charge	1.1	per night	22.50	22.50	22.50	22.50	22.50	22.50	0.0%	0.0%
Private Doctor Consultation fee	1.0	per adult	30.00	30.00	30.00	30.00	30.00	30.00	0.0%	0.0%

07 Transport

Petrol	60.8	1 ltr	2.68	2.76	2.85	3.74	4.24	3.74	-11.9%	31.2%
Taxi Fare P.O to Motootua Hosp	8.2	per trip	4.80	4.80	4.80	4.80	4.80	4.80	0.0%	0.0%
Taxi Fares P.O to Malua	8.2	per trip	31.30	31.30	31.30	31.30	31.30	31.30	0.0%	0.0%
Taxi Fares P.O to Falefa	8.2	per trip	43.20	43.20	43.20	43.20	43.20	43.20	0.0%	0.0%
Air Fares Faleolo-Pago-Faleolo	6.8	return trip	395.00	395.00	395.00	676.00	676.00	780.00	15.4%	97.5%
Air Fares Apia Auckland Apia	6.8	1 month	1257.87	1257.87	1257.87	1417.11	1819.47	1828.51	0.5%	45.4%
Car Registration (private car)	5.7	1501-200C	320.00	320.00	320.00	256.00	256.00	256.00	0.0%	-20.0%
Used Car Toyota Corolla (a)	5.1	1500 cc	23500.00	23500.00	23500.00	23500.00	23500.00	23500.00	0.0%	0.0%
Used Car Toyota Camry (a)	5.1	1500 cc	18000.00	18000.00	18000.00	18000.00	18000.00	18000.00	0.0%	0.0%
Diesel	4.8	1 ltr	2.56	2.65	2.68	3.98	4.69	4.09	-12.8%	52.6%
Bus Fares Apia Motootua Hosp	3.5	one adult	1.30	1.30	1.30	1.30	1.30	1.30	0.0%	0.0%
Bus Fares Apia Malua	3.5	one adult	2.60	2.60	2.60	2.60	2.60	2.60	0.0%	0.0%
Bus Fares Apia Falefa	3.5	one adult	3.70	3.70	3.70	3.70	3.70	3.70	0.0%	0.0%
Charge car repair Labour charge	3.4	min charge	63.33	63.33	63.33	67.00	67.00	67.00	0.0%	5.8%
New Pickup Ford Ranger Double cab (a)	3.3	3200 cc	94000.00	94000.00	94000.00	94000.00	94000.00	94000.00	0.0%	0.0%
New Pickup Toyota Hilux Double cab (a)	3.3	3200 cc	105000.00	105000.00	105000.00	105000.00	105000.00	105000.00	0.0%	0.0%
Used Mini van Toyota Noah (a)	2.4	2000 cc	19600.00	19600.00	19600.00	19600.00	21100.00	22100.00	4.7%	12.8%
Used Mini van Toyota Voxy (a)	2.4	2000 cc	19600.00	19600.00	19600.00	19600.00	21100.00	22100.00	4.7%	12.8%
Tyre Car Tyre	1.5	195/70 R(1	191.25	191.25	191.25	203.75	182.50	182.50	0.0%	-4.6%
Boat Fares Mulifanua Salelologa	1.1	one way	12.00	12.00	12.00	10.00	10.00	10.00	0.0%	-16.7%
Boat Fares Apia Pago Apia	1.1	min charge	120.00	120.00	120.00	120.00	120.00	120.00	0.0%	0.0%

08 Communication

Calling per minute Rate cell phone (a)	10.02	per minute	0.43	0.43	0.43	0.59	0.59	0.59	0.0%	37.2%
Internet data bundles per mb Rate (a)	10.02	per mb	0.25	0.25	0.25	0.33	0.33	0.33	0.0%	32.0%
Calling per minute Rate cell phone (a)	10.02	per minute	0.44	0.44	0.44	0.49	0.49	0.49	0.0%	11.4%
Internet data bundles per mb Rate (a)	10.02	per mb	0.20	0.20	0.20	0.33	0.33	0.33	0.0%	65.0%
Rental Telephone	3.87	1 month	24.15	24.15	24.15	24.15	24.15	24.15	0.0%	0.0%
Prepaid Internet	3.06	30 mins	5.80	5.80	5.80	5.80	5.80	5.80	0.0%	0.0%
NZ Telephone	1.50	3 mins	2.37	2.37	2.37	2.37	2.37	2.37	0.0%	0.0%
USA Telephone	1.50	3 mins	2.97	2.97	2.97	2.97	2.97	2.97	0.0%	0.0%
local Telephone	1.50	1 min	0.10	0.10	0.10	0.10	0.10	0.10	0.0%	0.0%

09 Recreation and culture

Television LCD 32" (a)	2.30 LCD 32"	869.50	852.83	852.83	852.83	869.50	869.50	0.0%	2.0%
Exercise Book w arw ick	1.44 1B4	1.45	1.45	1.45	1.55	1.62	1.55	-4.1%	6.9%
Laptop (a)	1.33 each	2898.60	2898.60	2898.60	2898.60	2898.60	2898.60	0.0%	0.0%
Graxomone Weedkiller	0.56 1 ltr	46.67	46.67	46.67	46.67	46.67	51.67	10.7%	10.7%
Admission Cinema Admission	0.41 ticket	15.00	15.00	15.00	15.00	15.00	15.00	0.0%	0.0%
Paper Samoa New s Paper	0.01 each	2.50	2.50	2.50	2.50	2.50	2.50	0.0%	0.0%
Paper New s Paper	0.01 each	2.50	2.50	2.50	2.50	2.50	2.50	0.0%	0.0%

10 Education

Fees PTA Primary Y6 Urban Registration fees (a)	7.23 Year 6	72.50	72.50	72.50	72.50	72.50	72.50	0.0%	0.0%
Fees PTA Secondary Y10 Urban Registration fees	5.11 Year 10	58.00	58.00	58.00	58.00	58.00	58.00	0.0%	0.0%
Fees Tertiary NUS registration School Fees	3.79 registrati	322.00	322.00	322.00	322.00	322.00	322.00	0.0%	0.0%
Fees Secondary Y Examination Fees (a)	3.61 Y12-13	25.50	25.50	25.50	25.50	25.50	25.50	0.0%	0.0%

11 Restaurants and hotels

Fish & Chip Meal	7.79 1 serve	10.08	10.08	10.08	10.92	11.00	11.33	3.0%	12.4%
Curry & Chopsuey Meal	4.87 1 serve	4.00	4.00	4.00	5.00	5.00	5.00	0.0%	25.0%
Chicken & Chips Meal (a)	4.87 1 serve	10.29	10.43	10.43	11.36	11.43	11.93	4.4%	14.4%
Steam rice & chicken Meal (a)	4.87 1 serve	5.00	5.00	5.00	6.17	6.17	6.67	8.1%	33.3%

12 Miscellaneous goods and services

Paper Sofan deluxe ply Toilet Paper	8.52 250 sheet:	0.98	1.00	1.00	1.14	1.19	1.19	0.0%	18.8%
Hair Gel	4.59 1124 ml	4.61	4.61	4.61	4.91	5.29	5.29	0.0%	14.6%
Price for Storage of remains (a)	4.41 per day	60.00	60.00	60.00	60.00	60.00	60.00	0.0%	0.0%
Basic Casket (a)	4.41 each	1966.67	1966.67	1966.67	1966.67	1966.67	1966.67	0.0%	0.0%
Standard Embalming (a)	4.41 1 person	1500.00	1500.00	1500.00	1500.00	1500.00	1500.00	0.0%	0.0%
Toilet soap (a)	4.38 90g	1.91	1.91	1.91	2.04	2.02	2.02	0.0%	5.7%
Diapers (a)	4.19 5kg-10kg	7.74	7.60	7.37	8.01	8.01	8.01	0.0%	8.7%
soap Lux Toilet soap	3.87 85g	0.99	0.99	0.99	1.05	1.06	1.06	0.0%	7.6%
Paste Colgate regular flavour Tooth Paste	3.43 140g	4.30	4.30	4.30	4.42	4.52	4.54	0.5%	5.7%
Huggies kg & Diapers	1.30 16kg & ovr	39.47	39.50	39.50	39.68	39.68	39.68	0.0%	0.5%

Source : Samoa Bureau Statistics

(a) : New commodity from February 2016

(P) : Provisional figures

Note : Please note unit of conversion was in pound's (lb's) but been converted into kilograms (kg)

Table 4. IMPORTED GOODS COMPONENT OF THE CONSUMER PRICE INDEX
(Base Period : Average Prices February 2016 = 100)

Group	All Items	Food and Non Alcoholic Beverages	Alcoholic Beverages, Tobacco and Narcotics	Clothing and Footwear	Housing, Water, Electricity, Gas and other Fuels	Furnishings, Household Equipment and Maintenance	Health	Transport	Communication	Recreation and Culture	Education	Restaurants	Miscellaneous goods and services
<i>Weights</i>	494.7	269.1	23.8	15.2	28.3	26.9	2.5	88.6	<i>n.a</i>	5.6	<i>n.a</i>	<i>n.a</i>	34.7
Ave - 2019	111.1	114.5	118.3	93.7	100.8	95.8	97.9	117.3		87.9			96.7
Ave - 2020	107.9	112.2	117.1	93.2	96.0	97.7	95.8	107.4		87.6			98.0
Ave - 2021	114.0	118.4	118.8	100.9	99.1	98.7	108.0	119.9		87.3			95.9
2021													
September	118.4	123.7	119.2	108.6	99.9	99.1	110.6	126.6		87.4			95.6
October	118.2	123.5	119.2	109.2	102.7	98.7	110.6	125.4		88.1			95.5
November	118.1	122.4	119.2	109.4	105.0	98.5	110.6	127.2		88.1			95.6
December	122.7	126.7	119.2	109.4	112.0	99.6	110.6	137.1		88.1			95.7
2022													
January	121.6	125.9	119.2	111.2	110.8	100.8	110.6	133.0		88.1			95.9
February	122.4	128.0	119.7	114.3	110.9	102.2	116.1	129.7		88.1			96.4
March	123.6	127.7	119.7	114.7	112.4	103.6	100.1	136.0		91.2			98.3
April	126.0	128.9	119.7	114.5	119.5	102.8	97.2	143.5		91.2			99.2
May	125.8	128.2	118.5	115.4	119.8	102.8	88.1	143.8		91.2			101.2
June	131.1	132.3	118.4	115.3	125.1	107.1	88.1	158.2		91.2			101.0
July	136.6	141.9	119.1	115.4	124.9	107.7	105.0	158.2		89.9			102.5
August	143.6	147.3	119.1	115.8	132.6	109.2	114.0	176.4		91.7			105.3
September (P)	143.3	153.2	119.1	115.1	127.4	108.4	101.1	159.3		91.4			105.4
<u>Percentage Change (P)</u>													
Sep 2022													
over	21.0%	23.9%	-0.1%	6.0%	27.5%	9.4%	-8.6%	25.8%		4.6%			10.2%
Sep 2021													
Sep 2022													
over	-0.2%	4.0%	0.0%	-0.6%	-3.9%	-0.7%	-11.3%	-9.7%		-0.4%			0.0%
Aug 2022													

Source : Samoa Bureau Statistics

(P) : Provisional figures

Note : n.a. Not applicable

Table 5. IMPORTED ITEMS UNDERLYING INDEX

(Base Period : Average Prices February 2016 = 100)

Group	All Items	Food and Non Alcoholic Beverages	Alcoholic Beverages, Tobacco and Narcotics	Clothing and Footwear	Housing, Water , Electricity, Gas and other Fuels	Furnishings, Household Equipment and Maintenance	Health	Transport	Communication	Recreation and Culture	Education	Restaurants	Miscellaneous goods and services
Weights	401.2	269.1	n.a	15.2	24.2	26.9	2.5	23.0	n.a	5.6	n.a	n.a	34.7
Ave - 2019	108.9	114.5		93.7	94.6	95.8	97.9	108.1		87.9			96.7
Ave - 2020	107.6	112.2		93.2	93.7	97.7	95.8	110.4		87.6			98.0
Ave - 2021	112.3	118.4		100.9	94.5	98.7	108.0	114.4		87.3			95.9
2021													
September	116.1	123.7		108.6	94.0	99.1	110.6	114.2		87.4			95.6
October	116.2	123.5		109.2	97.5	98.7	110.6	114.6		88.1			95.5
November	115.6	122.4		109.4	99.2	98.5	110.6	114.5		88.1			95.6
December	118.9	126.7		109.4	104.7	99.6	110.6	114.5		88.1			95.7
2022													
January	118.5	125.9		111.2	104.5	100.8	110.6	114.4		88.1			95.9
February	120.3	128.0		114.3	105.4	102.2	116.1	114.6		88.1			96.4
March	120.2	127.7		114.7	105.1	103.6	100.1	114.6		91.2			98.3
April	121.4	128.9		114.5	111.5	102.8	97.2	114.6		91.2			99.2
May	121.2	128.2		115.4	111.8	102.8	88.1	114.6		91.2			101.2
June	124.1	132.3		115.3	111.5	107.1	88.1	114.6		91.2			101.0
July	130.9	141.9		115.4	111.2	107.7	105.0	114.6		89.9			102.5
August	135.0	147.3		115.8	111.9	109.2	114.0	116.1		91.7			105.3
September (P)	139.0	153.2		115.1	112.6	108.4	101.1	117.5		91.4			105.4
<u>Percentage Change (P)</u>													
Sep 2022 over Sep 2021	19.7%	23.9%		6.0%	19.8%	9.4%	-8.6%	2.9%		4.6%			10.2%
Sep 2022 over Aug 2022	2.9%	4.0%		-0.6%	0.6%	-0.7%	-11.3%	1.2%		-0.4%			0.0%

Source : Samoa Bureau Statistics

(P) : Provisional figures

Note : n.a. Not applicable

Table 6. LOCAL GOODS COMPONENT OF THE CONSUMER PRICE INDEX
(Base Period : Average Prices February 2016 = 100)

Group	All Items	Food and Non Alcoholic Beverages	Alcoholic Beverages, Tobacco and Narcotics	Clothing and Footwear	Housing, Water, Electricity, Gas and other Fuels	Furnishings, Household Equipment and Maintenance	Health	Transport	Communication	Recreation and Culture	Education	Restaurants	Miscellaneous goods and services
Weights	505.3	134.6	104.6	6.0	91.3	3.9	2.2	59.9	51.5	0.4	19.7	22.4	8.8
Ave - 2019	105.5	107.3	116.5	93.8	93.2	100.3	102.5	102.3	104.2	100.0	113.5	103.3	102.3
Ave - 2020	105.3	106.8	120.7	94.2	87.6	100.3	103.0	100.1	104.2	100.0	114.9	109.4	102.3
Ave - 2021	105.9	105.6	122.2	93.8	90.3	100.3	103.0	99.6	107.1	100.0	109.9	111.2	102.3
2021													
September	107.3	106.4	122.1	94.2	98.6	100.3	103.0	100.0	104.2	100.0	109.4	111.4	102.3
October	109.1	107.3	122.2	94.2	100.5	100.3	103.0	100.0	115.9	100.0	109.4	111.4	102.3
November	108.1	115.7	122.1	94.2	83.9	100.3	103.0	98.2	115.9	100.0	109.4	111.7	102.3
December	108.2	115.8	122.3	94.2	83.9	100.3	103.0	97.9	115.9	100.0	109.4	111.7	102.3
2022													
January	108.3	115.1	122.2	94.2	83.9	100.3	103.0	98.2	115.8	100.0	109.4	118.3	102.3
February	108.4	115.4	122.7	94.2	83.9	100.5	103.0	98.2	115.8	100.0	109.4	118.3	102.3
March	108.9	116.6	123.3	94.2	83.9	100.5	103.0	98.2	115.8	100.0	109.4	118.3	102.3
April	108.6	115.8	123.1	94.2	83.9	100.5	103.0	98.2	115.8	100.0	109.4	118.3	102.3
May	109.0	116.9	123.5	94.2	83.9	100.5	103.0	98.2	115.8	100.0	109.4	118.3	102.3
June	111.2	122.4	123.6	94.2	83.9	100.5	103.0	100.1	115.8	100.0	109.4	128.3	102.3
July	114.4	123.9	123.9	90.4	83.9	100.6	103.0	107.9	133.7	100.0	109.4	128.5	102.3
August	116.4	129.5	124.4	90.6	84.7	100.6	103.0	110.6	133.7	100.0	109.4	129.2	102.3
September (P)	117.1	129.9	124.4	89.8	84.7	100.8	103.0	113.7	133.7	100.0	109.4	133.8	102.3
<u>Percentage Change (P)</u>													
Sep 2022													
over	9.1%	22.1%	1.9%	-4.7%	-14.1%	0.4%	0.0%	13.7%	28.4%	0.0%	0.0%	20.1%	0.0%
Sep 2021													
Sep 2022													
over	0.6%	0.3%	0.0%	-0.9%	0.0%	0.2%	0.0%	2.8%	0.0%	0.0%	0.0%	3.5%	0.0%
Aug 2022													

Source : Samoa Bureau Statistics

(P) : Provisional figures

Table 7. LOCAL ITEMS UNDERLYING INDEX

(Base Period : Average Prices February 2016 = 100)

Group	All Items	Food and Non Alcoholic Beverages	Alcoholic Beverages, Tobacco and Narcotics	Clothing and Footwear	Housing, Water, Electricity, Gas and other Fuels	Furnishings, Household Equipment and Maintenance	Health	Transport	Communication	Recreation and Culture	Education	Restaurants	Miscellaneous goods and services
Weights	185.5	76.1	n.a	6.0	n.a	3.9	1.0	3.4	51.5	n.a	12.3	22.4	8.8
Ave - 2019	103.6	101.6		93.8		100.3	105.2	108.6	104.2		118.5	103.3	102.3
Ave - 2020	104.6	101.9		94.2		100.3	106.3	108.6	104.2		120.6	109.4	102.3
Ave - 2021	105.1	102.1		93.8		100.3	106.3	108.6	107.1		112.7	111.2	102.3
2021													
September	104.1	101.6		94.2		100.3	106.3	108.6	104.2		111.9	111.4	102.3
October	107.5	101.9		94.2		100.3	106.3	108.6	115.9		111.9	111.4	102.3
November	107.7	102.3		94.2		100.3	106.3	108.6	115.9		111.9	111.7	102.3
December	107.8	102.5		94.2		100.3	106.3	108.6	115.9		111.9	111.7	102.3
2022													
January	108.9	103.0		94.2		100.3	106.3	114.4	115.8		111.9	118.3	102.3
February	108.7	102.6		94.2		100.5	106.3	114.4	115.8		111.9	118.3	102.3
March	108.7	102.6		94.2		100.5	106.3	114.4	115.8		111.9	118.3	102.3
April	108.7	102.6		94.2		100.5	106.3	114.4	115.8		111.9	118.3	102.3
May	109.0	103.5		94.2		100.5	106.3	114.4	115.8		111.9	118.3	102.3
June	112.7	109.5		94.2		100.5	106.3	114.4	115.8		111.9	128.3	102.3
July	117.8	109.9		90.4		100.6	106.3	114.4	133.7		111.9	128.5	102.3
August	117.9	109.9		90.6		100.6	106.3	114.4	133.7		111.9	129.2	102.3
September (P)	119.2	111.8		89.8		100.8	106.3	114.4	133.7		111.9	133.8	102.3
<u>Percentage Change (P)</u>													
Sep 2022 over Sep 2021	14.5%	10.0%		-4.7%		0.4%	0.0%	5.3%	28.4%		0.0%	20.1%	0.0%
Sep 2022 over Aug 2022	1.1%	1.8%		-0.9%		0.2%	0.0%	0.0%	0.0%		0.0%	3.5%	0.0%

Source : Samoa Bureau Statistics

(P) : Provisional figures

Note : n.a. Not applicable

Table 8. CONSUMER PRICE INDEX (AVERAGE ANNUAL INFLATION RATE).**(Base Period : Average Prices February 2016 = 100)**

Group	All Items	Food and Non Alcoholic Beverages	Alcoholic Beverages, Tobacco and Narcotics	Clothing and Footwear	Housing, Water, Electricity, Gas and other Fuels	Furnishings, Household Equipment, and Maintenance	Health	Transport	Communication	Recreation and Culture	Education	Restaurants	Miscellaneous goods and services
<i>Weights</i>	1000.0	403.7	128.4	21.2	119.6	30.8	4.6	148.5	51.5	6.1	19.7	22.4	43.5
2019	1.0	1.0	4.1	-1.6	4.4	-1.6	3.1	-3.2	0.9	-4.2	2.8	4.4	0.0
2020	-1.6	-1.5	2.7	-0.3	-5.7	1.8	-0.9	-6.1	0.0	-0.3	1.2	5.9	1.0
2021	3.1	3.4	1.3	5.8	3.1	0.9	6.5	7.0	2.8	-0.3	-4.3	1.7	-1.6
2021													
September	-0.8	-2.7	1.8	2.9	-0.9	1.1	4.6	0.8	0.0	-0.7	-3.1	3.1	-1.0
October	0.5	-0.8	1.6	3.8	1.1	1.0	5.7	2.6	0.9	-0.7	-3.5	2.5	-1.2
November	1.8	1.2	1.4	4.7	2.1	1.0	6.4	4.7	1.9	-0.5	-3.9	1.9	-1.4
December	3.1	3.4	1.3	5.8	3.1	0.9	6.5	7.0	2.8	-0.3	-4.3	1.7	-1.6
2022													
January	4.5	5.3	1.2	6.9	5.3	0.7	6.5	9.2	3.7	0.1	-4.7	2.0	-1.9
February	5.7	7.0	1.1	8.4	6.6	1.0	6.5	11.0	4.7	0.4	-4.3	2.4	-1.9
March	6.7	8.5	1.0	10.0	7.8	1.2	5.8	12.5	5.6	1.1	-4.0	2.7	-1.7
April	7.6	10.0	0.9	11.5	7.8	1.3	5.1	13.8	6.5	1.6	-3.6	3.0	-1.4
May	8.2	11.0	0.8	13.1	7.9	1.7	3.8	14.1	7.4	1.9	-3.2	3.4	-0.9
June	8.8	12.2	0.6	14.5	6.3	2.4	2.4	14.6	8.4	2.0	-2.8	4.5	-0.1
July	9.5	13.6	0.7	13.6	4.7	3.1	1.7	15.3	10.7	2.1	-2.4	5.6	0.7
August	10.3	14.9	0.8	12.9	3.2	3.8	1.0	16.9	13.1	2.5	-2.0	6.7	1.5
September (P)	11.0	16.2	0.9	12.1	1.9	4.4	-0.1	17.5	15.5	2.9	-1.6	8.4	2.3

Source : Samoa Bureau Statistics

(P) : Provisional figures

Table 9 Consumer Price Index (Percentage change and Average Annual Inflation)

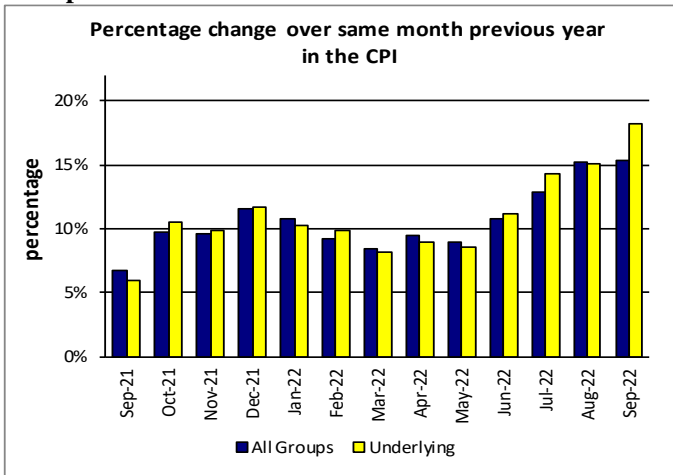
(Base Period: Average Prices February 2016 = 100)

Period	CPI ALL ITEMS	Percentage change over previous month	Last 12 months over previous 12 months	UNDERLYING ALL ITEMS	Percentage change over previous month	Last 12 months over previous 12 months	LOCAL COMPONENT	Percentage change over previous month	Last 12 months over previous 12 months	IMPORTED COMPONENT	Percentage change over previous month	Last 12 months over previous 12 months
2019	108.3	-	1.0	107.2	-	0.5	105.5	-	2.8	111.1	-	-0.7
2020	106.6	-	-1.6	106.6	-	-0.5	105.3	-	-0.2	107.9	-	-2.9
2021	109.9	-	3.1	110.1	-	3.2	105.9	-	0.6	114.0	-	5.7
2021												
September	112.8	0.0	-0.8	112.3	-0.3	-0.8	107.3	0.0	-0.8	118.4	0.1	-0.8
October	113.6	0.7	0.5	113.5	1.0	0.6	109.1	1.7	-0.4	118.2	-0.1	1.3
November	113.0	-0.5	1.8	113.1	-0.4	1.9	108.1	-0.9	0.2	118.1	-0.1	3.4
December	115.3	2.0	3.1	115.4	2.0	3.2	108.2	0.0	0.6	122.7	3.9	5.7
2022												
January	114.8	-0.4	4.5	115.4	0.1	4.2	108.3	0.1	1.4	121.6	-0.9	7.6
February	115.3	0.4	5.7	116.6	1.0	5.3	108.4	0.2	2.0	122.4	0.7	9.3
March	116.2	0.7	6.7	116.6	0.0	6.2	108.9	0.4	2.7	123.6	1.0	10.8
April	117.2	0.9	7.6	117.4	0.7	7.0	108.6	-0.3	3.1	126.0	2.0	12.1
May	117.3	0.1	8.2	117.3	-0.1	7.6	109.0	0.4	3.6	125.8	-0.2	12.7
June	121.0	3.2	8.8	120.5	2.7	8.4	111.2	2.0	3.9	131.1	4.2	13.6
July	125.3	3.6	9.5	126.7	5.2	9.4	114.4	2.9	4.4	136.6	4.2	14.5
August	129.9	3.6	10.3	129.6	2.3	10.4	116.4	1.8	4.9	143.6	5.1	15.6
September (P)	130.1	0.2	11.0	132.7	2.4	11.4	117.1	0.6	5.5	143.3	-0.2	16.4

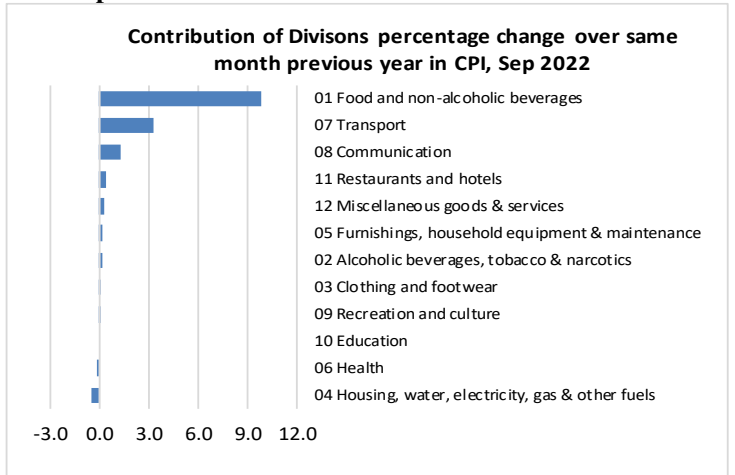
Source : Samoa Bureau Statistics

(P) : Provisional figures

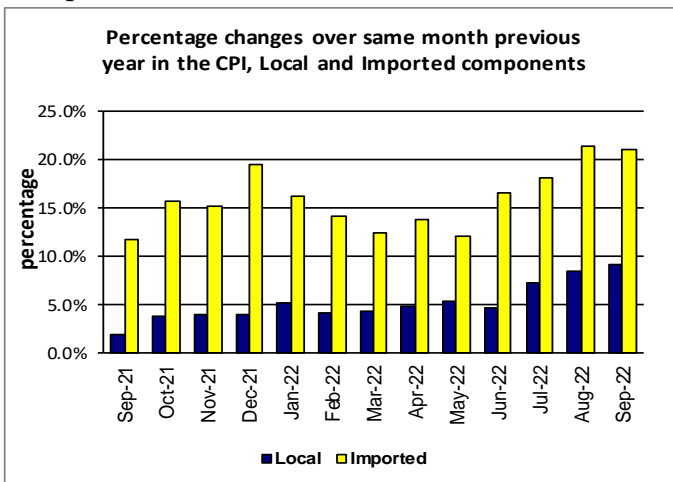
Graph.5



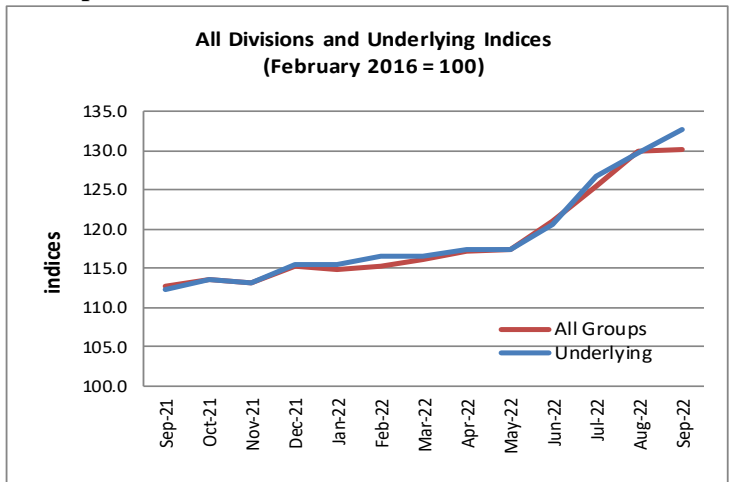
Graph.6



Graph.7



Graph.8



Graph.9

