

Please address all correspondence  
To Government Statistician  
In reply, please quote the file reference



GOVERNMENT OF SAMOA

File Ref: CPI 2/2023

## SAMOA BUREAU OF STATISTICS

# CONSUMER PRICE INDEX FEBRUARY 2023

### Key findings:

The Consumer Price Index for February 2023 increased by 11.8 percent compared to the same month last year.

- The Food and Non Alcoholic Beverages index increased by 20.7 percent
- The Restaurants index increased 14.2 percent.
- The Communication index also increased by 14.0 percent

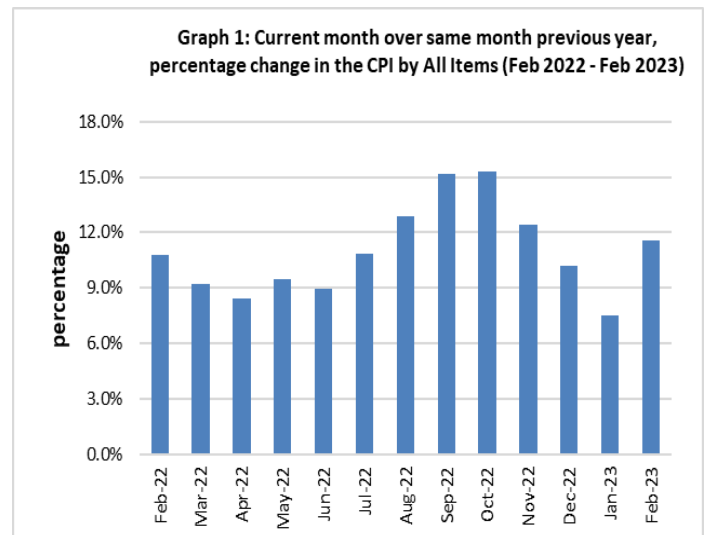
The Average Annual Inflation for the year ended February 2023 was 11.2 percent.

The CPI went up by 0.6 percent from January 2023.

### SUMMARY

The Consumer Price Index (CPI) for February 2023 rose 11.8 percent compared to February 2022. This was mainly influenced by the increase in the Imported goods component by 14.5 percent from the same month last year as a result of higher prices for imported food, toiletries, fuel, building materials and laptop.

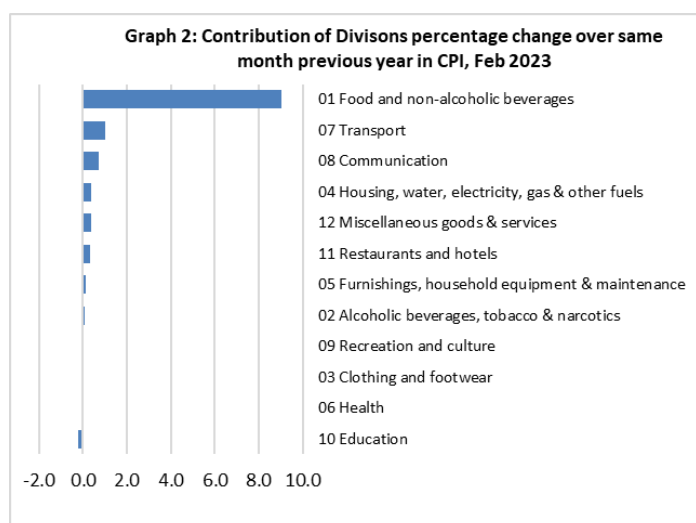
The Local goods component also contributed to the increase when it went up by 8.8 percent on a year-on-year (y-o-y) basis, due to higher prices for local food, meals, phone calls, internet and airline fares. Graph 1 shows the percentage changes over the same month last year in the CPI by all Divisions from February 2022 to February 2023.



Source : Samoa Bureau of Statistics

### Total All Divisions Contribution

As depicted in Graph 2, Food & Non Alcoholic Beverages was the largest contributor to the 11.8 percent rise in the CPI in February 2023, with a contribution of 9.0 percentage-points (pp) to the overall increase in February 2023. The most significant drivers of this within the group were chicken leg quarters (up 30.2%), fresh fish (up 23.5%), flour (up 48.3%), devondale (up 43.5%), koko samoa (up 59.9%), corned beef (up 33.9%), cooking oil (up 46.4%), round pancake (up 33.3%), Chinese cabbage (up 65.2%), cucumber (up 63.0%), tomato (up 56.8%) and head cabbage (up 60.9%). The next largest contributor was Transport with a contribution of 1.0 pp, increasing 6.7% compared to February 2022. The greatest drivers of this increase were petrol increasing 3.5%, diesel increasing 23.9%, and air fares (Apia-Pago-Apia) rising 71.1% & (Apia-Auckland-Apia) up 23.2% from the same month of the previous year. Communication also contributed 0.7 pp due to the increase in mobile phone calling per minute and internet.

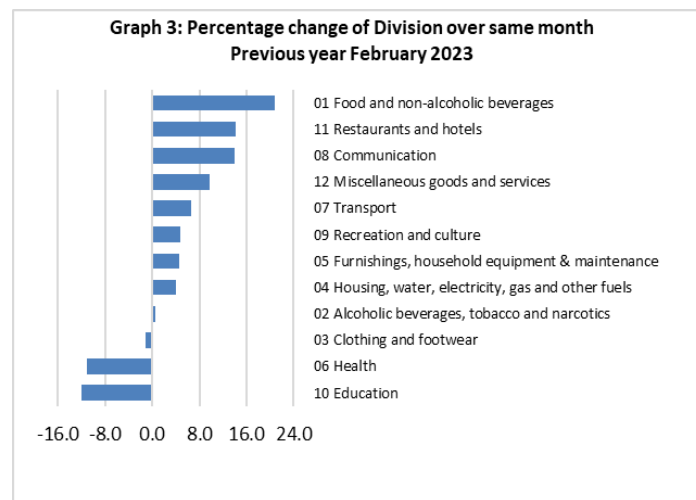


Source : Samoa Bureau of Statistics

### Consumer Price Index (% Change)

Graph 3 shows the percentage change for all Divisions (groups) in February 2023 in comparison to February 2022. Food & Non Alcoholic had the largest increase of 20.7% followed by Restaurants up 14.2% and Communication up 14.0%. Other groups such as Miscellaneous Goods & Services, Transport, Recreation & Culture, Furnishing, Household Equipment & Maintenance, Housing, Water, Electricity Gas & Other Fuel and Alcoholic Beverages & Tobacco indices recorded increases of 9.8, 6.7, 4.8, 4.6, 3.8 and 1.5 percent respectively.

On the other hand, Education fell 12.0 percent followed by Health down 9.0 and Clothing & Footwear declining 1.2 percent.



Source : Samoa Bureau of Statistics

### Imported Goods Component

The Imported goods component of the CPI registered an increase of 14.5 percent when compared to the same month last year. This increase was mainly due to higher prices recorded for imported food, fuel (petrol, diesel and kerosene), cooking gas, laptop, cement, weedkiller, toilet paper, hair gel, toilet soap, washing soap and mosquito coil.

### Local Goods Component

The increase in prices for local food, meals, mobile phone calling per minute, internet and airline fares have resulted in the 8.8 percent increase in the local goods component.

### Food and Non-Alcoholic Beverages Index

The increase of 20.7 percent in the Food & Non-Alcoholic Beverages index was influenced by higher prices recorded for chicken leg quarters (up 30.2%), noodle (up 24.2%), round pancake (up 33.3%), turkey wings (up 26.9%), fresh fish (both string up 27.9% and large up 38.7%), cooking oil (up 46.4%), Chinese cabbage (up 65.2%), flour (up 48.3%), devondale milk (up 43.5%), anchor milk (up 26.0%), koko samoa (up 59.9%), corned beef (up 33.9%), cucumber (up 63.0%), tomato (up 56.8%) and head cabbage (up 60.9%).

### Restaurants Index

The Restaurants index recorded an increase of 14.2 percent due to the rise in prices for steam rice & chicken (21.2%), chicken & chip (16.4%), fish & chip (13.9%) and curry & chopsuey (7.1%).

## Communication Index

The increase in prices for mobile phone calling per minute (up 19.5%) and internet data bundle (up 15.8%) were the major contributors to the 14.0 percent increase in the Communication index.

## Miscellaneous Goods and Services Index

Higher prices recorded for toilet paper, hair gel, toilet soap and toothpaste are reflected in the 9.8 percent increase in the Miscellaneous Goods & Services index.

## Transport Index

The increases in prices for petrol of 3.5%, diesel of 23.9%, airline fares (Apia-Pago-Apia) of 71.1%, Apia-Auckland-Apia fares of 23.2% and prices of used minivan vehicle of 12.2% were the main drivers of the 6.7 percent increase in the Transport index.

## Recreation and Culture Index

The 4.8 percent increase in the Recreation and Culture index was mainly driven by the increase in prices for laptop and weedkiller.

## Furnishings, Household Equipment & Maintenance Index

The Furnishings, Household Equipment & Maintenance index rose 4.6 percent due to the increase in washing soap, mosquito coil, bush knife, glass buffet sideboard (sefe) and clothing chest.

## Housing, Water, Electricity, Gas and other Fuels Index

The increase in prices recorded for cement, kerosene, cooking gas, paint and timber have led to the 3.8 percent increase in the Housing, Water, Electricity, Gas and other Fuels index.

## Alcoholic Beverages and Tobacco Index

Higher prices recorded for beer and Samoan kava mainly contributed to the 1.5 percent increase in the Alcoholic Beverages and Tobacco index.

## Education

The 12.0 percent decrease in the Education index was a result of lower prices recorded for NUS registration fees.

## Health Index

The 9.0 percent decrease in the Health index was influenced by lower prices recorded for medicine (amoxicillin tablets).

## Clothing and Footwear Index

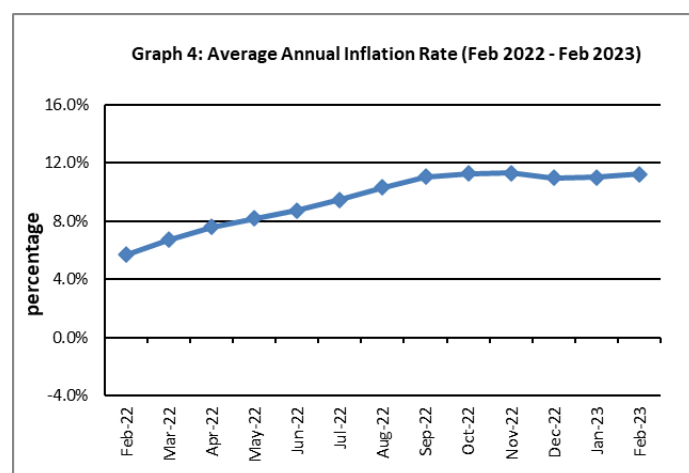
Clothing and Footwear index fell 1.2 percent due to the decreases in prices for puletasi, school uniform (ie faitaga), running shoes and women's undergarments.

## Underlying Indices <sup>1/</sup>

The All Items Underlying Index for February 2023 registered an increase of 15.2 percent when compared to February 2022. It also increased by 3.0 percent when compared to January 2023. Both the Imported and Local Items Underlying Indices recorded increases of 17.0 and 11.1 percent respectively.

## Inflation Rate

The average annual inflation rate for the year ended February 2023 was 11.2 percent. For the twelve months ending February 2022, the inflation rate was 5.7 percent. Presented in Graph 4 is the Average annual inflation rate (Feb 2022 - Feb 2023).



Source : Samoa Bureau of Statistics

The attached Tables and Graphs provide the users with more detailed analysis.

## **Technical Notes:**

The Consumer Price (CPI) measures the rate of inflation for Samoa. It is designed to measure the change in prices for the goods purchased by households in Samoa. The CPI measures the change in prices by comparing the prices for a basket of goods and services at the collection period with the price for the same goods in a base period.

The basket of goods that is priced is based on the average expenditures of households as recorded in the Household Income and Expenditure Survey (HIES). The HIES survey identifies how much households spend on different items. The more households spend on an item on average, the more important it is to the price index, and the higher the weight in the index.

<sup>1/</sup> Monthly movements in the 'headline' CPI series can be volatile. This volatility reflects price changes in particular items that may be due, among other factors, to fluctuations in commodity markets and agricultural conditions, policy changes, or seasonal or infrequent price resetting.

Underlying inflation is a measure of inflation that excludes certain items that face volatile price movements. Underlying inflation eliminates products that can have temporary price shocks because these shocks can diverge from the overall trend of inflation and give a false measure of inflation.

### **SAMOA BUREAU OF STATISTICS**

*Economic Statistics Division  
FMFM II Building, Level 1  
P O Box 1151  
Apia, Samoa*

*Phone: (685) 62014/62015/62005*

*Fax: (685) 24675*

*E-mail: [info.stats@sbs.gov.ws](mailto:info.stats@sbs.gov.ws)*

*Website: [www.sbs.gov.ws](http://www.sbs.gov.ws)*

Date of release: 27<sup>th</sup> March 2023

The next Consumer Price Index will be released on 21<sup>st</sup> April 2023.



**Leota Aliielua Salani**  
**GOVERNMENT STATISTICIAN / (CEO)**

**Table 1. CONSUMER PRICE INDEX.**

**(Base Period : Average Prices February 2016 = 100)**

Group	All Items	Food and Non Alcoholic Beverages	Alcoholic Beverages, Tobacco and Narcotics	Clothing and Footwear	Housing, Water , Electricity, Gas and other Fuels	Furnishings, Household Equipment, and Maintenance	Health	Transport	Communication	Recreation and Culture	Education	Restaurants	Miscellaneous goods and services
<b>Weights</b>	<b>1000.0</b>	<b>403.7</b>	<b>128.4</b>	<b>21.2</b>	<b>119.6</b>	<b>30.8</b>	<b>4.6</b>	<b>148.5</b>	<b>51.5</b>	<b>6.1</b>	<b>19.7</b>	<b>22.4</b>	<b>43.5</b>
Ave - 2020	106.6	110.4	120.0	93.5	89.6	98.1	99.2	104.4	104.2	88.5	114.9	109.4	98.8
Ave - 2021	109.9	114.1	121.6	98.9	92.4	98.9	105.7	111.7	107.1	88.2	109.9	111.2	97.2
Ave - 2022	122.0	131.8	122.8	108.3	93.1	105.0	101.9	131.0	124.5	91.0	109.4	126.2	102.1
2022													
February	115.3	123.8	122.1	108.6	90.3	102.0	109.9	117.0	115.8	89.0	109.4	118.3	97.6
March	116.2	124.0	122.6	108.9	90.6	103.2	101.5	120.8	115.8	91.8	109.4	118.3	99.1
April	117.2	124.5	122.4	108.8	92.3	102.5	99.9	125.2	115.8	91.8	109.4	118.3	99.8
May	117.3	124.5	122.6	109.4	92.4	102.5	95.1	125.4	115.8	91.8	109.4	118.3	101.4
June	121.0	129.0	122.6	109.3	93.6	106.3	95.1	134.8	115.8	91.8	109.4	128.3	101.2
July	125.3	135.9	123.0	108.4	93.6	106.8	104.1	137.9	133.7	90.6	109.4	128.5	102.5
August	129.9	141.4	123.4	108.7	96.0	108.1	108.8	149.9	133.7	92.3	109.4	129.2	104.7
September	130.1	145.5	123.4	108.0	94.8	107.5	102.0	140.9	133.7	92.0	109.4	133.8	104.7
October	127.7	141.9	123.4	108.5	94.5	108.0	98.9	135.3	133.7	88.6	109.4	133.2	105.1
November	124.6	134.3	123.4	106.9	94.6	106.6	100.0	134.9	132.0	91.8	109.4	135.1	106.0
December	124.0	134.5	123.0	107.4	94.5	106.0	100.0	131.2	132.0	91.9	109.4	135.1	105.8
2023													
January	128.2	144.5	123.6	107.6	94.4	106.1	100.0	131.1	132.0	93.3	109.4	135.1	106.9
February (P)	129.0	149.5	123.9	107.3	93.7	106.8	100.0	124.8	132.0	93.3	96.3	135.1	107.2
<b><u>Percentage Change (P)</u></b>													
Feb 2023													
over Feb 2022	11.8%	20.7%	1.5%	-1.2%	3.8%	4.6%	-9.0%	6.7%	14.0%	4.8%	-12.0%	14.2%	9.8%
Feb 2023													
over Jan 2023	0.6%	3.5%	0.3%	-0.3%	-0.8%	0.6%	0.0%	-4.8%	0.0%	0.0%	-12.0%	0.0%	0.3%

Source : Samoa Bureau Statistics

(P) : Provisional figures

**Table 2. ALL ITEMS UNDERLYING INDEX**

**(Base Period : Average Prices February 2016 = 100)**

Group	All Items	Food and Non Alcoholic Beverages	Alcoholic Beverages, Tobacco and Narcotics	Clothing and Footwear	Housing, Water, Electricity, Gas and other Fuels	Furnishings, Household Equipment, and Maintenance	Health	Transport	Communication	Recreation and Culture	Education	Restaurants	Miscellaneous goods and services
<i>Weights</i>	<b>586.7</b>	<b>345.3</b>	<i>n.a</i>	<b>21.2</b>	<b>24.2</b>	<b>30.8</b>	<b>3.5</b>	<b>26.4</b>	<b>51.5</b>	<b>5.6</b>	<b>12.3</b>	<b>22.4</b>	<b>43.5</b>
Ave - 2020	106.6	109.9		93.5	93.7	98.1	98.9	110.1	104.2	87.6	120.6	109.4	98.8
Ave - 2021	110.1	114.8		98.9	94.5	98.9	107.5	113.6	107.1	87.3	112.7	111.2	97.2
Ave - 2022	122.9	130.1		108.3	110.2	105.0	102.5	115.5	124.5	90.4	111.9	126.2	102.1
2022													
February	116.6	122.4		108.6	105.4	102.0	113.2	114.5	115.8	88.1	111.9	118.3	97.6
March	116.6	122.1		108.9	105.1	103.2	102.0	114.5	115.8	91.2	111.9	118.3	99.1
April	117.4	123.1		108.8	111.5	102.5	99.9	114.5	115.8	91.2	111.9	118.3	99.8
May	117.3	122.8		109.4	111.8	102.5	93.5	114.5	115.8	91.2	111.9	118.3	101.4
June	120.5	127.2		109.3	111.5	106.3	93.5	114.5	115.8	91.2	111.9	128.3	101.2
July	126.7	134.9		108.4	111.2	106.8	105.4	114.5	133.7	89.9	111.9	128.5	102.5
August	129.6	139.1		108.7	111.9	108.1	111.7	115.8	133.7	91.7	111.9	129.2	104.7
September	132.7	144.1		108.0	112.6	107.5	102.6	117.1	133.7	91.4	111.9	133.8	104.7
October	131.1	141.3		108.5	112.2	108.0	98.5	117.2	133.7	87.8	111.9	133.2	105.1
November	126.0	132.9		106.9	112.9	106.6	100.1	117.4	132.0	91.2	111.9	135.1	106.0
December	124.4	130.1		107.4	112.4	106.0	100.1	117.4	132.0	91.3	111.9	135.1	105.8
2023													
January	130.5	140.3		107.6	112.9	106.1	100.1	117.4	132.0	92.8	111.9	135.1	106.9
February (P)	134.4	146.8		107.3	112.9	106.8	100.1	117.4	132.0	92.8	111.9	135.1	107.2
<b><u>Percentage Change (P)</u></b>													
Feb 2023													
over	15.2%	19.9%		-1.2%	7.1%	4.6%	-11.6%	2.5%	14.0%	5.2%	0.0%	14.2%	9.8%
Feb 2022													
Feb 2023													
over	3.0%	4.7%		-0.3%	0.0%	0.6%	0.0%	0.0%	0.0%	0.0%	0.0%	0.0%	0.3%
Jan 2023													

Source : Samoa Bureau Statistics

(P) : Provisional figures

Note : n.a. Not applicable

**Table 3. AVERAGE RETAIL PRICES OF SELECTED COMMODITIES**

Commodities	Wt	Unit	2021		2022		2023		Feb-23	
			Dec	Jan	Feb	Dec	Jan	Feb (P)	% chng from prev mnth	%chng from Jan 22
			<b>01 Food and non-alcoholic beverages</b>							
Chicken leg quarters	62.19	kg	5.08	4.96	5.03	4.57	5.78	6.55	13.3%	30.2%
Raw Sugar	21.27	kg	2.92	2.96	3.12	3.42	3.60	3.60	0.0%	15.4%
Bread	17.20	loaf	1.64	1.64	1.64	1.86	1.84	1.85	0.8%	13.1%
Corned Beef Oxford (a)	15.88	340 grms	8.55	8.62	8.62	10.13	10.13	10.13	0.0%	17.6%
Taro	15.17	kg	3.68	3.46	3.64	3.78	3.68	4.13	12.2%	13.6%
Re-packed medium grain rice	13.38	kg	3.06	3.08	3.19	3.55	3.51	3.56	1.5%	11.6%
Prepacked medium grain rice (a)	13.38	907 grms	2.77	2.77	2.77	2.87	2.95	3.05	3.4%	10.2%
Bongo	10.18	20 grms	0.83	0.83	0.83	0.87	0.87	0.89	2.3%	7.2%
Keke Saina Biscuits (a)	9.21	pkt 10	6.21	6.23	6.23	7.04	7.21	7.25	0.6%	16.5%
Ice Cream (a)	9.17	2 ltr	15.77	16.00	16.00	18.98	19.25	19.25	0.0%	20.3%
Ramen	9.00	85 grms	1.14	1.08	1.10	1.39	1.32	1.37	3.4%	24.2%
Fish (Piece)	7.92	kg	25.00	24.42	28.65	30.70	31.45	29.72	-5.5%	3.7%
Butter	7.66	454 grms	16.36	16.36	16.36	18.76	18.83	18.83	0.0%	15.1%
Round Pancake (a)	7.50	sml	0.15	0.15	0.15	0.20	0.20	0.20	0.0%	33.3%
Mutton Flaps	6.63	kg	25.61	25.27	25.43	25.63	25.77	26.30	2.1%	3.4%
Canned fish betw een \$3.00 and \$3.99 N/Oi	6.37	425 grms	3.18	3.23	3.31	3.33	3.30	3.29	-0.3%	-0.7%
Canned fish \$4:00 or over N/Oil	6.37	425 grms	4.89	4.74	4.66	4.97	4.75	4.75	0.0%	1.9%
Canned fish betw een \$3.00 and \$3.99 N/Oi	6.37	425grms	3.14	3.14	3.14	3.24	3.35	3.35	0.0%	6.8%
Canned fish under \$3.00 in N/Oil	6.37	425 grms	2.78	2.78	2.77	2.73	2.77	2.77	0.0%	0.0%
Turkey Wings	6.31	kg	13.03	12.95	12.78	15.43	16.64	16.21	-2.6%	26.9%
Fish (string)	5.98	kg	12.05	13.34	10.94	16.21	16.12	14.00	-13.2%	27.9%
Fish (large)	5.98	kg	20.28	19.33	18.68	28.29	28.92	25.92	-10.4%	38.7%
Cooking vegetable oil (a)	5.89	ltr	6.20	6.50	6.63	10.10	10.05	9.71	-3.4%	46.4%
Sausage beef	5.76	kg	14.43	14.32	14.32	15.50	14.70	14.73	0.2%	2.9%
Chinese Cabbage	5.53	kg	6.12	6.08	6.21	7.85	10.63	10.26	-3.5%	65.2%
Eggs medium size	5.45	doz	7.72	7.92	7.75	7.87	8.02	8.42	5.0%	8.5%
Flour plain w hite	5.29	kg	2.27	2.24	2.27	3.32	3.37	3.37	0.0%	48.3%
Onions	5.23	kg	3.69	3.69	4.65	4.33	5.46	5.79	6.1%	24.7%
Milk Devondale	5.11	ltr	3.90	4.01	4.07	4.43	4.94	5.84	18.2%	43.5%
Soft Drink Coke	5.07	600 mls	2.98	2.98	2.98	3.11	3.12	3.16	1.4%	6.2%
Soft Drink Taxi	5.07	330 mls	1.82	1.82	1.82	1.92	1.92	1.92	0.1%	5.6%
Milk Anchor	4.81	ltr	3.93	3.97	4.04	4.36	4.59	5.09	10.9%	26.0%
Salted Beef	4.72	kg	21.15	22.03	21.18	23.61	23.59	23.69	0.4%	11.9%
Canned fish Soifua in Tomato Sauce	4.47	425 grms	2.59	2.59	2.58	2.54	2.53	2.56	1.5%	-0.5%
CCK Coffee	4.47	100 grms	3.94	3.94	3.94	3.94	3.94	3.94	0.0%	0.0%
Sky Flakes Biscuits	4.29	850 grms	16.89	16.89	16.89	19.63	19.63	19.63	0.0%	16.2%
Stew ing beef	4.20	kg	16.05	16.05	16.05	17.11	17.11	17.79	4.0%	10.8%
Koko Samoa	4.09	cup	17.61	17.92	15.91	17.61	20.68	25.44	23.0%	59.9%
Corned Beef Pacific	3.64	340 grms	15.74	15.87	15.87	18.61	18.88	18.88	0.0%	19.0%
Ramen kimchi (bow l)	3.40	86 grms	2.74	2.88	2.91	3.58	3.57	3.52	-1.4%	20.9%
Soy Sauce Mushroom	3.25	750 grms	3.13	3.14	3.14	3.68	3.61	3.63	0.5%	15.4%
Pork Pig Trotter	3.10	kg	8.23	7.98	7.93	8.25	8.28	8.75	5.7%	10.4%
Corned Beef Palm	3.01	340 grms	14.16	14.10	14.19	18.58	18.93	19.00	0.4%	33.9%
Ripe Banana (a)	2.71	kg	3.46	3.37	3.48	4.13	3.65	4.48	22.7%	28.7%
Tang pow der (a)	2.51	25 grms	0.66	0.66	0.66	0.60	0.60	0.60	0.0%	-9.6%
Minties Pascall (a)	2.49	200 grms	12.90	12.90	12.90	12.50	16.50	16.50	0.0%	27.9%



Potatoes	2.41	kg	4.05	4.48	5.45	6.00	6.64	6.52	-1.7%	19.6%
Green Banana	2.29	kg	1.27	1.39	1.25	1.44	1.50	1.34	-10.5%	7.7%
Apple small	2.26	each	1.45	1.27	1.32	1.58	1.69	1.69	0.0%	27.5%
Mineral Water	2.25	bottle	1.48	1.46	1.50	1.89	1.88	1.88	0.0%	25.3%
Chocolate Cake (a)	2.15	sml	21.50	21.50	21.20	22.40	22.40	22.40	0.0%	5.7%
Cucumbers	2.12	kg	4.18	3.99	4.17	5.68	6.40	6.79	6.1%	63.0%
Instant Nescafe Coffee	2.02	50 grms	6.82	6.82	6.82	8.78	8.82	8.50	-3.6%	24.6%
Mutton Neck	1.93	kg	25.18	24.91	24.15	27.13	27.13	27.13	0.0%	12.3%
Vermicelli Lungken	1.88	454 grms	3.66	3.77	3.82	4.74	4.80	4.84	0.8%	26.8%
Tomatoes	1.80	kg	12.20	12.83	13.93	15.26	19.98	21.84	9.3%	56.8%
Sausage Pork	1.68	kg	14.12	14.26	14.26	15.23	14.60	15.19	4.1%	6.5%
Bell Tea Bags	1.62	150 grms	11.24	11.24	11.36	11.38	11.34	11.40	0.6%	0.3%
Samco Twisties	1.40	20 grms	0.70	0.70	0.70	0.79	0.79	0.81	3.6%	16.3%
Matured husked Coconuts	1.30	kg	0.96	0.99	1.03	1.36	1.08	1.24	15.1%	21.1%
Matured Un husked Coconuts (a)	1.30	kg	0.67	0.68	0.59	0.89	0.76	0.73	-3.2%	25.2%
Taamu	1.13	kg	7.50	7.50	4.55	11.99	21.03	5.04	-76.0%	10.9%
Round Cabbage Round	1.12	kg	6.44	6.51	8.08	9.62	12.59	12.99	3.2%	60.9%

## 02 Alcoholic beverages, tobacco and narcotics

Beer Vailima Lager	37.94	355 mls	3.65	3.67	3.70	3.80	3.80	3.80	0.0%	2.7%
Pall Mall Filter Cigarettes (Red)	24.29	20 rolls	14.60	14.60	14.60	14.60	14.60	14.60	0.0%	0.0%
Pall Mall Menthol Cigarettes (Green)	24.29	20 rolls	14.60	14.60	14.60	14.60	14.60	14.60	0.0%	0.0%
Beer Taula (a)	16.26	330 mls	3.56	3.56	3.56	3.68	3.73	3.80	2.0%	6.7%
Tobacco w infield (a)	12.64	30 grms	15.00	15.00	15.00	15.00	15.00	15.00	0.0%	0.0%
Vodka Niu Spirit (a)	3.76	Niu / 2ltr	66.82	66.82	66.82	66.82	66.82	66.82	0.0%	0.0%
Whisky Jim Bean Spirit (a)	3.76	1ltr	92.13	92.13	94.63	92.50	93.75	93.13	-0.7%	-1.6%
Paper Cigarettes	3.61	50 sheets	1.71	1.71	1.70	1.70	1.70	1.70	0.0%	0.0%
Samoan kava	1.82	pkt	46.67	30.61	35.90	22.27	39.04	43.92	12.5%	22.3%

## 03 Clothing and footwear

Uniform le Faitaga College boys	4.28	size 8-10	37.00	37.67	38.33	38.33	38.33	37.67	-1.7%	-1.7%
Uniform Pa'ave (a)	3.71	size 7	37.33	39.33	42.67	42.67	42.67	42.67	0.0%	0.0%
Jandals soft	2.48	10.5 size	9.25	9.25	9.25	9.17	9.33	9.33	0.0%	0.9%
Puletasi mamanu palama (a)	2.35	medium	150.00	150.00	150.00	125.00	125.00	125.00	0.0%	-16.7%
le solosolo cotton print	2.22	42 inch	11.93	11.93	11.93	11.92	11.92	12.03	1.0%	0.8%
Cargo shorts (a)	1.76	38 size	92.25	92.25	92.25	93.00	93.00	93.00	0.0%	0.8%
Shirt short sleeves men Aloha shirt (a)	1.15	men / XL	55.23	55.23	55.23	58.10	58.10	58.10	0.0%	5.2%
Shirt long sleeves men	1.15	16.5 size	37.24	37.24	37.24	38.38	38.38	38.38	0.0%	3.1%
Shoes Nike Running shoes (a)	0.82	size 9	258.50	258.50	258.50	224.75	224.75	224.75	0.0%	-13.1%
le Faitaga	0.70	36/38 size	33.80	33.80	34.18	38.05	39.30	39.24	-0.2%	14.8%
Woman Nylon Panties	0.59	medium	4.72	4.67	4.67	4.42	4.42	4.42	0.0%	-5.4%

## 04 Housing, water, electricity, gas and other fuels

Electricity Cashpower	50.59	kwh	0.58	0.58	0.58	0.58	0.58	0.58	0.0%	0.0%
Reservoir treated Water	28.55	15-40 m3	1.34	1.34	1.34	1.34	1.34	1.34	0.0%	0.0%
Liquid gas	15.77	9kg	66.00	65.50	66.00	71.80	71.80	71.80	0.0%	8.8%
Government house Rent	12.16	2 b/room	650.00	650.00	650.00	680.00	680.00	680.00	0.0%	4.6%
Kerosene	4.12	1ltr	2.66	2.54	2.46	3.57	3.49	3.11	-10.8%	26.5%
Paint High gloss w hite	3.45	4 ltrs	83.92	83.92	85.58	80.08	81.15	79.42	-2.1%	-7.2%
Paint Plus 2 plastic w hite	3.45	4 ltrs	48.80	48.80	48.80	49.80	50.80	52.40	3.1%	7.4%
Cement NZ or Australia	0.78	40 kg	33.19	34.79	35.46	46.24	46.30	45.80	-1.1%	29.2%
Dressed per Timber 2x4	0.71	meter	10.28	10.39	10.38	10.97	11.03	11.10	0.6%	7.0%



## 05 Furnishings, household equipment and routine household maintenance

Washing powder (a)	6.27	200 grms	1.88	1.98	2.04	2.08	2.09	2.09	0.0%	2.2%
Washing Soap yellow	5.90	bar	2.85	2.85	2.97	3.22	3.22	3.28	2.0%	10.4%
Mosquito coil	4.36	10 coil	1.30	1.33	1.33	1.55	1.55	1.55	0.0%	17.0%
Mattress single Futon (a)	3.81	4 inch	157.33	157.33	157.33	146.50	146.50	146.50	0.0%	-6.9%
Babysitting live-in (a)	3.78	1week	142.50	142.50	142.50	142.50	142.50	142.50	0.0%	0.0%
Refrigerator common brand	2.49	331-335 ltr	2301.32	2291.32	2291.32	2362.52	2362.52	2362.52	0.0%	3.1%
Gold Powder washing powder	1.68	180 grms	1.67	1.67	1.67	1.67	1.67	1.67	0.0%	0.0%
Eveready AA size Batteries	1.20	AA 1/4 size	4.10	3.96	3.96	3.70	3.70	3.90	5.4%	-1.4%
Bush knife tramontina	0.88	24 inch	28.74	28.61	28.24	30.86	30.74	30.49	-0.8%	8.0%
Kerosene stove	0.16	2 burner	112.50	112.50	112.50	112.50	112.50	112.50	0.0%	0.0%
Tumblers Glass basic no design (a)	0.11	medium	17.46	17.46	17.46	16.66	16.66	15.66	-6.0%	-10.3%
Seife 3 shelves	0.11	48*48 inch	620.00	620.00	645.00	740.00	722.50	722.50	0.0%	12.0%
Clothing chest flat top	0.01	medium	500.00	525.00	550.00	607.50	607.50	607.50	0.0%	10.5%

## 06 Health

Amoxicillin 500mg tablets (a)	2.46	20 tablets	8.50	8.50	9.40	7.90	7.90	7.90	0.0%	-16.0%
Hospital Charge	1.15	per night	22.50	22.50	22.50	22.50	22.50	22.50	0.0%	0.0%
Private Doctor Consultation fee	1.04	per adult	30.00	30.00	30.00	30.00	30.00	30.00	0.0%	0.0%

## 07 Transport

Petrol	60.80	1ltr	3.15	3.03	2.93	3.34	3.35	3.03	-9.3%	3.5%
Taxi Fare P.O to Motootua Hosp	8.15	per trip	4.80	4.80	4.80	4.80	4.80	4.80	0.0%	0.0%
Taxi Fares P.O to Malua	8.15	per trip	31.30	31.30	31.30	31.30	31.30	31.30	0.0%	0.0%
Taxi Fares P.O to Falefa	8.15	per trip	43.20	43.20	43.20	43.20	43.20	43.20	0.0%	0.0%
Air Fares Faleolo-Pago-Faleolo	6.84	return trip	395.00	395.00	395.00	676.02	676.02	676.02	0.0%	71.1%
Air Fares Apia Auckland Apia	6.77	1month	1257.87	1257.87	1257.87	1410.34	1454.44	1549.44	6.5%	23.2%
Car Registration (private car)	5.67	1501-2000 cc	256.00	256.00	256.00	256.00	256.00	256.00	0.0%	0.0%
Used Car Toyota Corolla (a)	5.08	1500 cc	23500.00	23500.00	23500.00	23500.00	23500.00	23500.00	0.0%	0.0%
Used Car Toyota Camry (a)	5.08	1500 cc	18000.00	18000.00	18000.00	18000.00	18000.00	18000.00	0.0%	0.0%
Diesel	4.83	1ltr	3.03	2.93	2.84	4.16	3.96	3.52	-11.2%	23.9%
Bus Fares Apia Motootua Hosp	3.49	one adult	1.30	1.30	1.30	1.30	1.30	1.30	0.0%	0.0%
Bus Fares Apia Malua	3.49	one adult	2.60	2.60	2.60	2.60	2.60	2.60	0.0%	0.0%
Bus Fares Apia Falefa	3.49	one adult	3.70	3.70	3.70	3.70	3.70	3.70	0.0%	0.0%
Labour charge car repair	3.38	min charge	63.33	67.00	67.00	67.00	67.00	67.00	0.0%	0.0%
New Pickup Ford Ranger Double cab (a)	3.25	3200 cc	94000.00	94000.00	94000.00	94000.00	94000.00	94000.00	0.0%	0.0%
New Pickup Toyota Hilux Double cab (a)	3.25	3200 cc	105000.00	105000.00	105000.00	105000.00	105000.00	105000.00	0.0%	0.0%
Used Mini van Toyota Noah (a)	2.42	2000 cc	19600.00	19600.00	19600.00	22000.00	22000.00	22000.00	0.0%	12.2%
Used Mini van Toyota Voxy (a)	2.42	2000 cc	19600.00	19600.00	19600.00	22000.00	22000.00	22000.00	0.0%	12.2%
Car Tyre	1.49	195/70 R(14)	203.75	198.75	203.75	197.50	197.50	197.50	0.0%	-3.1%
Boat Fares Mulifanua Salelologa	1.14	one way	10.00	10.00	10.00	10.00	10.00	10.00	0.0%	0.0%
Boat Fares Apia Pago Apia	1.14	min charge	120.00	120.00	120.00	120.00	120.00	120.00	0.0%	0.0%

## 08 Communication

Calling per minute Rate cell phone (a)	10.02	per minute	0.43	0.43	0.43	0.55	0.55	0.55	0.0%	27.9%
Internet data bundles per mb Rate (a)	10.02	per mb	0.25	0.25	0.25	0.33	0.33	0.33	0.0%	32.0%
Calling per minute Rate cell phone (a)	10.02	per minute	0.44	0.44	0.44	0.49	0.49	0.49	0.0%	11.4%
Internet data bundles per mb Rate (a)	10.02	per mb	0.32	0.32	0.32	0.33	0.33	0.33	0.0%	3.1%
Telephone Rental	3.87	1month	24.15	24.15	24.15	24.15	24.15	24.15	0.0%	0.0%
Prepaid Internet	3.06	30 mins	5.80	5.80	5.80	5.80	5.80	5.80	0.0%	0.0%
Telephone call NZ	1.50	3 mins	2.37	2.32	2.32	2.37	2.37	2.37	0.0%	2.2%
Telephone call USA	1.50	3 mins	2.97	2.97	2.97	2.97	2.97	2.97	0.0%	0.0%
Telephone call local	1.50	1min	0.10	0.10	0.10	0.10	0.10	0.10	0.0%	0.0%

## 09 Recreation and culture

Television LCD 32" (a)	2.30	LCD 32"	852.83	852.83	852.83	841.00	832.83	832.83	0.0%	-2.3%
Exercise Book w arwick	1.44	1B4	1.48	1.48	1.48	1.40	1.47	1.47	0.0%	-1.1%
Laptop (a)	1.33	each	2898.60	2898.60	2898.60	3516.80	3597.80	3597.80	0.0%	24.1%
Weedkiller Graxomone/Agriquat (a)	0.56	1ltr	46.67	46.67	46.67	51.67	51.67	51.67	0.0%	10.7%
Cinema Admission	0.41	ticket	15.00	15.00	15.00	15.00	15.00	15.00	0.0%	0.0%
New s Paper Samoa Observer	0.01	each	2.50	2.50	2.50	2.50	2.50	2.50	0.0%	0.0%
New s Paper New sline	0.01	each	2.50	2.50	2.50	2.50	2.50	2.50	0.0%	0.0%

## 10 Education

Fees Primary PTA/registration fees (a)	7.23	Year 6	72.50	72.50	72.50	72.50	72.50	72.50	0.0%	0.0%
Fees Secondary PTA/registration fees (a)	5.11	Year 10	58.00	58.00	58.00	58.00	58.00	58.00	0.0%	0.0%
Fees Tertiary NUS registration School Fees	3.79	registration	322.00	322.00	322.00	322.00	322.00	122.00	-62.1%	-62.1%
Fees Secondary Y Examination Fees (a)	3.61	Y12-13	25.50	25.50	25.50	25.50	25.50	25.50	0.0%	0.0%

## 11 Restaurants and hotels

Fish & Chip Meal	7.79	1serve	10.17	10.17	10.17	11.58	11.58	11.58	0.0%	13.9%
Curry & Chopsuey Meal	4.87	1serve	4.00	4.67	4.67	5.00	5.00	5.00	0.0%	7.1%
Chicken & Chips Meal (a)	4.87	1serve	10.43	10.43	10.43	12.14	12.14	12.14	0.0%	16.4%
Steam rice & chicken Meal (a)	4.87	1serve	5.00	5.50	5.50	6.67	6.67	6.67	0.0%	21.2%

## 12 Miscellaneous goods and services

Toilet Paper Sofan deluxe ply	8.52	250 sheets	1.00	1.00	1.00	1.20	1.20	1.20	0.0%	20.0%
Hair Gel	4.59	124 ml	4.61	4.61	4.61	5.50	5.57	5.57	0.0%	20.7%
Storage of remains (a)	4.41	per day	60.00	60.00	60.00	60.00	60.00	60.00	0.0%	0.0%
Basic Casket (a)	4.41	each	1966.67	1966.67	1966.67	1966.67	1966.67	1966.67	0.0%	0.0%
Standard Embalming (a)	4.41	1person	1500.00	1500.00	1500.00	1500.00	1500.00	1500.00	0.0%	0.0%
Toilet soap Protex (a)	4.38	90g	1.95	1.96	1.95	2.04	2.04	2.05	0.9%	5.1%
Diapers Soft Love (a)	4.19	5kg-10kg	7.37	7.31	7.31	7.50	7.56	7.56	0.0%	2.5%
Toilet soap Lux	3.87	85g	0.98	0.99	1.04	1.10	1.18	1.20	2.1%	23.1%
Paste Colgate regular flavour	3.43	140g	4.33	4.33	4.33	4.76	4.86	4.86	0.0%	12.1%
Diapers Huggies	1.30	16kg & over	39.63	39.63	39.63	39.73	39.72	39.72	0.0%	0.2%

Source : Samoa Bureau Statistics

(a) : New commodity from February 2016

(P) : Provisional figures

Note : Please note unit of conversion was in pound's (lb's) but been converted into kilograms (kg)

**Table 4. IMPORTED GOODS COMPONENT OF THE CONSUMER PRICE INDEX**

**(Base Period : Average Prices February 2016 = 100)**

	All Items	Food and Non Alcoholic Beverages	Alcoholic Beverages, Tobacco and Narcotics	Clothing and Footwear	Housing, Water , Electricity, Gas and other Fuels	Furnishings, Household Equipment and Maintenance	Health	Transport	Communication	Recreation and Culture	Education	Restaurants	Miscellaneous goods and services
<b>Weights</b>	<b>494.7</b>	<b>269.1</b>	<b>23.8</b>	<b>15.2</b>	<b>28.3</b>	<b>26.9</b>	<b>2.5</b>	<b>88.6</b>	<b>n.a</b>	<b>5.6</b>	<b>n.a</b>	<b>n.a</b>	<b>34.7</b>
Ave - 2020	107.9	112.2	117.1	93.2	96.0	97.7	95.8	107.4		87.6			98.0
Ave - 2021	114.0	118.4	118.8	100.9	99.1	98.7	108.0	119.9		87.3			95.9
Ave - 2022	131.5	136.3	119.2	114.6	121.9	105.7	100.9	149.1		90.4			102.0
2022													
February	122.4	128.0	119.7	114.3	110.9	102.2	116.1	129.7		88.1			96.4
March	123.6	127.7	119.7	114.7	112.4	103.6	100.1	136.0		91.2			98.3
April	126.0	128.9	119.7	114.5	119.5	102.8	97.2	143.5		91.2			99.2
May	125.8	128.2	118.5	115.4	119.8	102.8	88.1	143.8		91.2			101.2
June	131.1	132.3	118.4	115.3	125.1	107.1	88.1	158.2		91.2			101.0
July	136.6	141.9	119.1	115.4	124.9	107.7	105.0	158.2		89.9			102.5
August	143.6	147.3	119.1	115.8	132.6	109.2	114.0	176.4		91.7			105.3
September	143.3	153.2	119.1	115.1	127.4	108.4	101.1	159.3		91.4			105.4
October	139.8	149.4	119.2	115.4	126.2	109.0	95.3	152.0		87.8			105.8
November	133.8	138.2	119.2	114.1	126.8	107.4	97.4	152.0		91.2			106.9
December	130.7	134.4	119.3	114.2	126.2	106.8	97.4	147.0		91.3			106.7
2023													
January	137.9	147.5	119.6	114.3	126.0	106.9	97.4	146.6		92.8			108.0
February (P)	140.2	155.5	119.5	113.8	122.8	107.6	97.4	135.6		92.8			108.5
<b><u>Percentage Change (P)</u></b>													
Feb 2023													
over	14.5%	21.4%	-0.2%	-0.4%	10.8%	5.3%	-16.1%	4.6%		5.2%			12.5%
Feb 2022													
Feb 2023													
over	1.6%	5.4%	-0.1%	-0.4%	-2.5%	0.7%	0.0%	-7.5%		0.0%			0.4%
Jan 2023													

Source : Samoa Bureau Statistics

(P) : Provisional figures

Note : n.a. Not applicable

**Table 5. IMPORTED ITEMS UNDERLYING INDEX**  
(Base Period : Average Prices February 2016 = 100)

	All Items	Food and Non Alcoholic Beverages	Alcoholic Beverages, Tobacco and Narcotics	Clothing and Footwear	Housing, Water , Electricity, Gas and other Fuels	Furnishings, Household Equipment and Maintenance	Health	Transport	Communication	Recreation and Culture	Education	Restaurants	Miscellaneous goods and services
<b>Weights</b>	<b>401.2</b>	<b>269.1</b>	<b>n.a</b>	<b>15.2</b>	<b>24.2</b>	<b>26.9</b>	<b>2.5</b>	<b>23.0</b>	<b>n.a</b>	<b>5.6</b>	<b>n.a</b>	<b>n.a</b>	<b>34.7</b>
Ave - 2020	107.6	112.2		93.2	93.7	97.7	95.8	110.4		87.6			98.0
Ave - 2021	112.3	118.4		100.9	94.5	98.7	108.0	114.4		87.3			95.9
Ave - 2022	126.8	136.3		114.6	110.2	105.7	100.9	115.7		90.4			102.0
2022													
February	120.3	128.0		114.3	105.4	102.2	116.1	114.6		88.1			96.4
March	120.2	127.7		114.7	105.1	103.6	100.1	114.6		91.2			98.3
April	121.4	128.9		114.5	111.5	102.8	97.2	114.6		91.2			99.2
May	121.2	128.2		115.4	111.8	102.8	88.1	114.6		91.2			101.2
June	124.1	132.3		115.3	111.5	107.1	88.1	114.6		91.2			101.0
July	130.9	141.9		115.4	111.2	107.7	105.0	114.6		89.9			102.5
August	135.0	147.3		115.8	111.9	109.2	114.0	116.1		91.7			105.3
September	139.0	153.2		115.1	112.6	108.4	101.1	117.5		91.4			105.4
October	136.4	149.4		115.4	112.2	109.0	95.3	117.6		87.8			105.8
November	128.9	138.2		114.1	112.9	107.4	97.4	117.8		91.2			106.9
December	126.2	134.4		114.2	112.4	106.8	97.4	117.8		91.3			106.7
2023													
January	135.2	147.5		114.3	112.9	106.9	97.4	117.8		92.8			108.0
February (P)	140.7	155.5		113.8	112.9	107.6	97.4	117.8		92.8			108.5
<b><u>Percentage Change (P)</u></b>													
Feb 2023 over Feb 2022	17.0%	21.4%		-0.4%	7.1%	5.3%	-16.1%	2.8%		5.2%			12.5%
Feb 2023 over Jan 2023	4.0%	5.4%		-0.4%	0.0%	0.7%	0.0%	0.0%		0.0%			0.4%

Source : Samoa Bureau Statistics

(P) : Provisional figures

Note : n.a. Not applicable

**Table 6. LOCAL GOODS COMPONENT OF THE CONSUMER PRICE INDEX**

**(Base Period : Average Prices February 2016 = 100)**

Group	All Items	Food and Non Alcoholic Beverages	Alcoholic Beverages, Tobacco and Narcotics	Clothing and Footwear	Housing, Water , Electricity, Gas and other Fuels	Furnishings, Household Equipment and Maintenance	Health	Transport	Communication	Recreation and Culture	Education	Restaurants	Miscellaneous goods and services
<b>Weights</b>	<b>505.3</b>	<b>134.6</b>	<b>104.6</b>	<b>6.0</b>	<b>91.3</b>	<b>3.9</b>	<b>2.2</b>	<b>59.9</b>	<b>51.5</b>	<b>0.4</b>	<b>19.7</b>	<b>22.4</b>	<b>8.8</b>
Ave - 2020	105.3	106.8	120.7	94.2	87.6	100.3	103.0	100.1	104.2	100.0	114.9	109.4	102.3
Ave - 2021	105.9	105.6	122.2	93.8	90.3	100.3	103.0	99.6	107.1	100.0	109.9	111.2	102.3
Ave - 2022	112.6	122.8	123.6	92.1	84.2	100.6	103.0	104.3	124.5	100.0	109.4	126.2	102.3
2022													
February	108.4	115.4	122.7	94.2	83.9	100.5	103.0	98.2	115.8	100.0	109.4	118.3	102.3
March	108.9	116.6	123.3	94.2	83.9	100.5	103.0	98.2	115.8	100.0	109.4	118.3	102.3
April	108.6	115.8	123.1	94.2	83.9	100.5	103.0	98.2	115.8	100.0	109.4	118.3	102.3
May	109.0	116.9	123.5	94.2	83.9	100.5	103.0	98.2	115.8	100.0	109.4	118.3	102.3
June	111.2	122.4	123.6	94.2	83.9	100.5	103.0	100.1	115.8	100.0	109.4	128.3	102.3
July	114.4	123.9	123.9	90.4	83.9	100.6	103.0	107.9	133.7	100.0	109.4	128.5	102.3
August	116.4	129.5	124.4	90.6	84.7	100.6	103.0	110.6	133.7	100.0	109.4	129.2	102.3
September	117.1	129.9	124.4	89.8	84.7	100.8	103.0	113.7	133.7	100.0	109.4	133.8	102.3
October	115.9	126.7	124.3	91.1	84.7	100.9	103.0	110.6	133.7	100.0	109.4	133.2	102.3
November	115.5	126.3	124.4	88.3	84.7	101.0	103.0	109.7	132.0	100.0	109.4	135.1	102.3
December	117.5	134.6	123.9	90.1	84.7	101.0	103.0	107.8	132.0	100.0	109.4	135.1	102.3
2023													
January	118.6	138.4	124.5	90.7	84.7	100.9	103.0	108.2	132.0	100.0	109.4	135.1	102.3
February (P)	118.0	137.5	124.9	90.7	84.7	100.9	103.0	108.9	132.0	100.0	96.3	135.1	102.3
<b><u>Percentage Change (P)</u></b>													
Feb 2023 over Feb2022	8.8%	19.1%	1.8%	-3.6%	1.0%	0.4%	0.0%	10.8%	14.0%	0.0%	-12.0%	14.2%	0.0%
Feb2023 over Jan 2023	-0.5%	-0.7%	0.4%	0.0%	0.0%	0.0%	0.0%	0.7%	0.0%	0.0%	-12.0%	0.0%	0.0%

Source : Samoa Bureau Statistics

(P) : Provisional figures

**Table 7. LOCAL ITEMS UNDERLYING INDEX**

**(Base Period : Average Prices February 2016 = 100)**

Group	All Items	Food and Non Alcoholic Beverages	Alcoholic Beverages, Tobacco and Narcotics	Clothing and Footwear	Housing, Water , Electricity, Gas and other Fuels	Furnishings, Household Equipment and Maintenance	Health	Transport	Communication	Recreation and Culture	Education	Restaurants	Miscellaneous goods and services
<b>Weights</b>	<b>185.5</b>	<b>76.1</b>	<b>n.a</b>	<b>6.0</b>	<b>n.a</b>	<b>3.9</b>	<b>1.0</b>	<b>3.4</b>	<b>51.5</b>	<b>n.a</b>	<b>12.3</b>	<b>22.4</b>	<b>8.8</b>
Ave - 2020	104.6	101.9		94.2		100.3	106.3	108.6	104.2		120.6	109.4	102.3
Ave - 2021	105.1	102.1		93.8		100.3	106.3	108.6	107.1		112.7	111.2	102.3
Ave - 2022	114.3	108.1		92.1		100.6	106.3	114.4	124.5		111.9	126.2	102.3
2022													
February	108.7	102.6		94.2		100.5	106.3	114.4	115.8		111.9	118.3	102.3
March	108.7	102.6		94.2		100.5	106.3	114.4	115.8		111.9	118.3	102.3
April	108.7	102.6		94.2		100.5	106.3	114.4	115.8		111.9	118.3	102.3
May	109.0	103.5		94.2		100.5	106.3	114.4	115.8		111.9	118.3	102.3
June	112.7	109.5		94.2		100.5	106.3	114.4	115.8		111.9	128.3	102.3
July	117.8	109.9		90.4		100.6	106.3	114.4	133.7		111.9	128.5	102.3
August	117.9	109.9		90.6		100.6	106.3	114.4	133.7		111.9	129.2	102.3
September	119.2	111.8		89.8		100.8	106.3	114.4	133.7		111.9	133.8	102.3
October	119.5	112.7		91.1		100.9	106.3	114.4	133.7		111.9	133.2	102.3
November	119.8	114.2		88.3		101.0	106.3	114.4	132.0		111.9	135.1	102.3
December	120.3	115.2		90.1		101.0	106.3	114.4	132.0		111.9	135.1	102.3
2023													
January	120.2	114.9		90.7		100.9	106.3	114.4	132.0		111.9	135.1	102.3
February (P)	120.7	116.3		90.7		100.9	106.3	114.4	132.0		111.9	135.1	102.3
<b><u>Percentage Change (P)</u></b>													
Feb 2023 over Feb 2022	11.1%	13.3%		-3.6%		0.4%	0.0%	0.0%	14.0%		0.0%	14.2%	0.0%
Feb 2023 over Jan 2023	0.5%	1.1%		0.0%		0.0%	0.0%	0.0%	0.0%		0.0%	0.0%	0.0%

Source : Samoa Bureau Statistics

(P) : Provisional figures

Note : n.a. Not applicable

**Table 8. CONSUMER PRICE INDEX (AVERAGE ANNUAL INFLATION RATE).**

**(Base Period : Average Prices February 2016 = 100)**

	All Items	Food and Non Alcoholic Beverages	Alcoholic Beverages, Tobacco and Narcotics	Clothing and Footwear	Housing, Water , Electricity, Gas and other Fuels	Furnishings, Household Equipment, and Maintenance	Health	Transport	Communication	Recreation and Culture	Education	Restaurants	Miscellaneous goods and services
<i>Weights</i>	<b>1000.0</b>	<b>403.7</b>	<b>128.4</b>	<b>21.2</b>	<b>119.6</b>	<b>30.8</b>	<b>4.6</b>	<b>148.5</b>	<b>51.5</b>	<b>6.1</b>	<b>19.7</b>	<b>22.4</b>	<b>43.5</b>
2019	1.0	1.0	4.1	-1.6	4.4	-1.6	3.1	-3.2	0.9	-4.2	2.8	4.4	0.0
2020	-1.6	-1.5	2.7	-0.3	-5.7	1.8	-0.9	-6.1	0.0	-0.3	1.2	5.9	1.0
2021	3.1	3.4	1.3	5.8	3.1	0.9	6.5	7.0	2.8	-0.3	-4.3	1.7	-1.6
2022	11.0	15.5	1.0	9.5	0.8	6.2	-3.6	17.3	16.2	3.2	-0.4	13.5	5.0
2022													
January	4.5	5.3	1.2	6.9	5.3	0.7	6.5	9.2	3.7	0.1	-4.7	2.0	-1.9
February	5.7	7.0	1.1	8.4	6.6	1.0	6.5	11.0	4.7	0.4	-4.3	2.4	-1.9
March	6.7	8.5	1.0	10.0	7.8	1.2	5.8	12.5	5.6	1.1	-4.0	2.7	-1.7
April	7.6	10.0	0.9	11.5	7.8	1.3	5.1	13.8	6.5	1.6	-3.6	3.0	-1.4
May	8.2	11.0	0.8	13.1	7.9	1.7	3.8	14.1	7.4	1.9	-3.2	3.4	-0.9
June	8.8	12.2	0.6	14.5	6.3	2.4	2.4	14.6	8.4	2.0	-2.8	4.5	-0.1
July	9.5	13.6	0.7	13.6	4.7	3.1	1.7	15.3	10.7	2.1	-2.4	5.6	0.7
August	10.3	14.9	0.8	12.9	3.2	3.8	1.0	16.9	13.1	2.5	-2.0	6.7	1.5
September	11.0	16.2	0.9	12.1	1.9	4.4	-0.1	17.5	15.5	2.9	-1.6	8.4	2.3
October	11.3	16.8	0.9	11.3	0.1	5.1	-1.5	17.9	15.8	2.8	-1.2	10.0	3.2
November	11.3	16.3	1.0	10.4	0.6	5.7	-2.7	18.2	16.0	3.0	-0.8	11.8	4.1
December	11.0	15.5	1.0	9.5	0.8	6.2	-3.6	17.3	16.2	3.2	-0.4	13.5	5.0
2022													
January	11.0	15.6	1.1	8.4	0.5	6.5	-4.4	16.7	16.4	3.4	0.0	14.1	6.0
February (P)	11.2	16.2	1.2	6.9	0.6	6.6	-5.5	16.2	16.6	3.7	-1.0	14.8	6.8

Source : Samoa Bureau Statistics

(P) : Provisional figures



**Table 9 Consumer Price Index (Percentage change and Average Annual Inflation)**

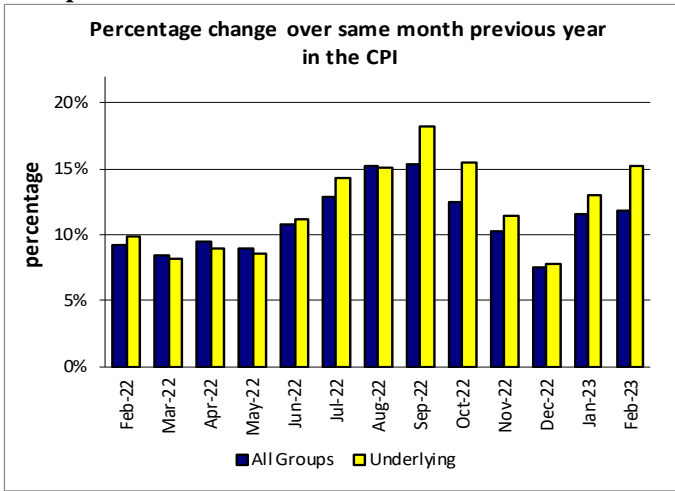
(Base Period: Average Prices February 2016 = 100)

	<b>CPI ALL ITEMS</b>	Percentage change over previous month	Last 12 months over previous 12 months	<b>UNDERLYING ALL ITEMS</b>	Percentage change over previous month	Last 12 months over previous 12 months	<b>LOCAL COMPONENT</b>	Percentage change over previous month	Last 12 months over previous 12 months	<b>IMPORTED COMPONENT</b>	Percentage change over previous month	Last 12 months over previous 12 months
2019	108.3	-	1.0	107.2	-	0.5	105.5	-	2.8	111.1	-	-0.7
2020	106.6	-	-1.6	106.6	-	-0.5	105.3	-	-0.2	107.9	-	-2.9
2021	109.9	-	3.1	110.1	-	3.2	105.9	-	0.6	114.0	-	5.7
2022	122.0	-	11.0	122.9	-	11.6	112.6	-	6.3	131.5	-	15.3
2022												
February	115.3	0.4	5.7	116.6	1.0	5.3	108.4	0.2	2.0	122.4	0.7	9.3
March	116.2	0.7	6.7	116.6	0.0	6.2	108.9	0.4	2.7	123.6	1.0	10.8
April	117.2	0.9	7.6	117.4	0.7	7.0	108.6	-0.3	3.1	126.0	2.0	12.1
May	117.3	0.1	8.2	117.3	-0.1	7.6	109.0	0.4	3.6	125.8	-0.2	12.7
June	121.0	3.2	8.8	120.5	2.7	8.4	111.2	2.0	3.9	131.1	4.2	13.6
July	125.3	3.6	9.5	126.7	5.2	9.4	114.4	2.9	4.4	136.6	4.2	14.5
August	129.9	3.6	10.3	129.6	2.3	10.4	116.4	1.8	4.9	143.6	5.1	15.6
September	130.1	0.2	11.0	132.7	2.4	11.4	117.1	0.6	5.5	143.3	-0.2	16.4
October	127.7	-1.8	11.3	131.1	-1.2	11.9	115.9	-1.1	5.7	139.8	-2.4	16.6
November	124.6	-2.5	11.3	126.0	-3.8	12.0	115.5	-0.3	6.0	133.8	-4.3	16.4
December	124.0	-0.4	11.0	124.4	-1.3	11.6	117.5	1.7	6.3	130.7	-2.3	15.3
2023												
January	128.2	3.3	11.0	130.5	4.9	11.9	118.6	1.0	6.7	137.9	5.5	15.1
February (P)	129.0	0.6	11.2	134.4	3.0	12.3	118.0	1.0	7.1	140.2	1.6	15.1

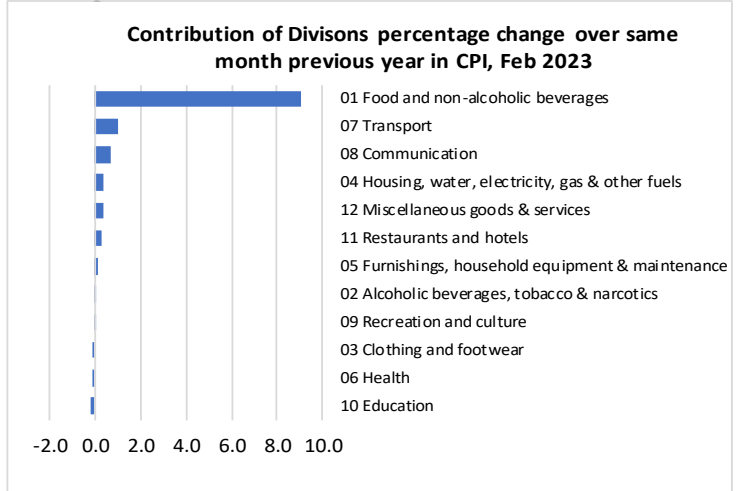
Source : Samoa Bureau Statistics

(P) : Provisional figures

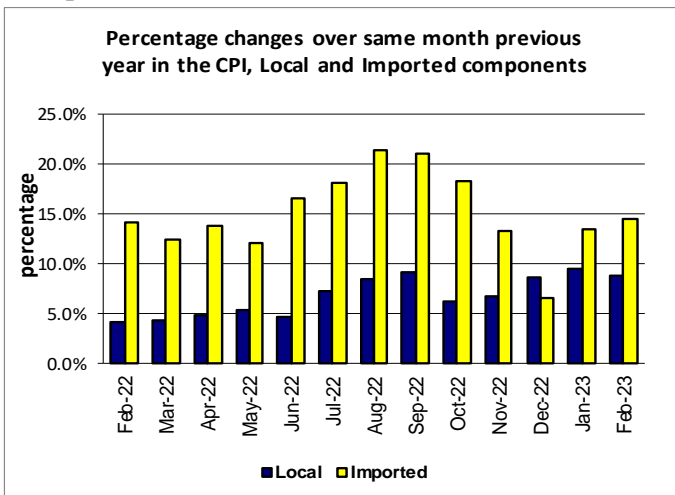
**Graph.5**



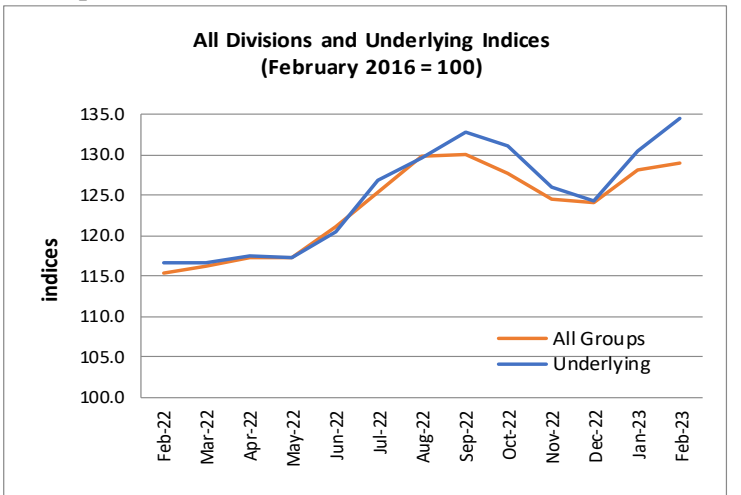
**Graph.6**



**Graph.7**



**Graph.8**



**Graph.9**

