

SAMOA BUREAU OF STATISTICS

CONSUMER PRICE INDEX NOVEMBER 2023

Key findings:

The Consumer Price Index for November 2023 increased by 6.3 percent compared to the same month of the previous year.

- The Food and Non-Alcoholic Beverages index increased by 12.6 percent.
- The Miscellaneous Goods and Services index increased 5.8 percent.
- The Restaurants index also increased by 5.1 percent.

The Average Annual Inflation for the year ended November 2023 was 8.0 percent.

The CPI rose 0.1 percent from October 2023.

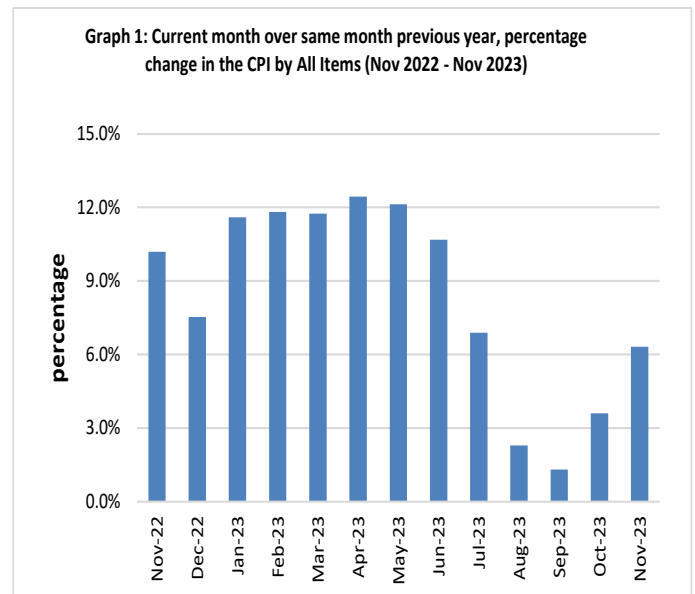
SUMMARY

The Consumer Price Index (CPI) for November 2023 rose 6.3 percent compared to November 2022. This was mainly influenced by higher prices for food items, toiletries, prepared meals, footwear and household furnishing.

When compared to the previous month, the CPI also went up by 0.1 percent. Graph 1 shows the percentage changes over the same month of the previous year in the CPI by all Divisions from November 2022 to November 2023.

The Local goods component rose 6.5 percent when compared to the same month last year due to the increase in prices for local food products such as taro, fresh fish, koko Samoa, green banana, tomato, ta'amu and meals.

The Imported goods component also increased 6.1 percent mainly due to higher prices recorded for onion, milk, coke and potatoes.



Source: Samoa Bureau of Statistics

Total All Divisions Contribution

As shown in Graph 2, Food & Non-Alcoholic Beverages was the largest contributor to the 6.3 percent rise in the CPI in November 2023, with a contribution of 5.5 percentage-points to the overall increase in November 2023. The most significant drivers of this within the group were chicken leg quarter (up 16.5%), rice prepacked (up 18.0%), fresh fish (up 30.3%), onion (up 38.2%), devondale milk (up 23.2%), coke (up 23.0%), local coffee (up 15.7%), potatoes (up 26.6%), apple (up 18.0%), koko Samoa (up 21.0%), green banana (up to 20.9%), cucumber (up 14.5%), tomato (up 17.0%), taro (up 50.6%), coconut (up 12.4%) and ta'amu (up 91.3%).

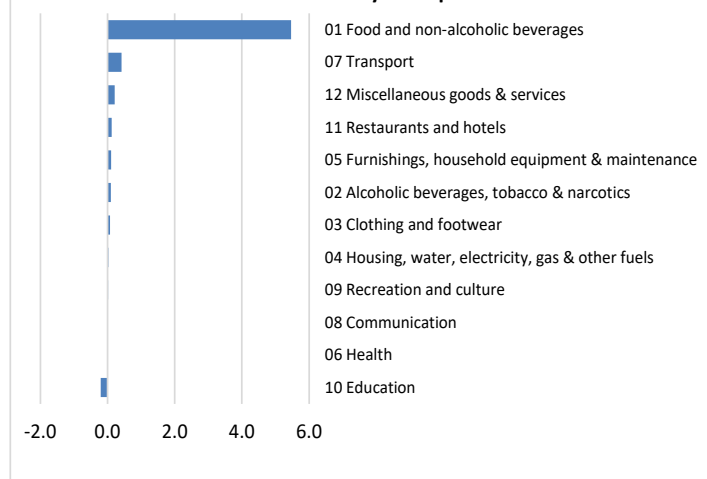
Transport was the next largest contributor with a contribution of 0.4 percentage point, increasing 2.6 percent compared to November 2022. This was mainly influenced by the increases in the airfare for Apia-Auckland-Apia (up 30.5%) and prices for new doubled cap pick up (up 22.7%).

Miscellaneous goods and services with a contribution of 0.2 percentage-point increased 5.8 percent compared to November 2022. The main drivers of this increase were toilet soap (up 21.6%), colgate toothpaste (up 8.1%) and embalming (up 11.7%).

Restaurants and hotels also contributed 0.1 percentage-point increasing 5.1 percent compared to November 2022. This was mainly influenced by the increases in prices for chicken and chips meal (up 11.8%), curry & chop suey meal (up 6.7%) and steam rice and chicken meal (up 5.0%).

Furnishings, household equipment & maintenance contributed 0.1 percentage-point to the rise in CPI due to the increases in prices of clothing chest (up 25.5%) and mattress single (up 23.1%).

Graph 2: Monthly Percentage Point contribution to CPI November 2023 by Group



Source : Samoa Bureau of Statistics

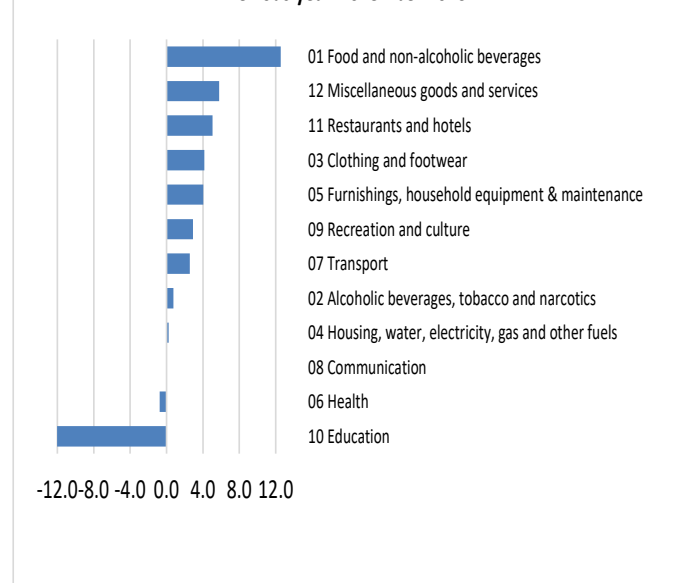
Consumer Price Index (% Change)

Graph 3 shows the percentage change for all Divisions (groups) in November 2023 in comparison to November 2022. Food and Non-Alcoholic Beverages had the largest increase of 12.6% followed by Miscellaneous goods and services and Restaurants & Hotels which rose 5.8% and 5.1% percent respectively.

Other groups such as Clothing & Footwear, Furnishing, Household Equipment & Maintenance, Recreation and Culture, Transport, Alcoholic beverages, Tobacco and narcotics and Housing, Water, Electricity Gas & Other Fuel indices recorded increases of 4.2, 4.0, 2.9, 2.6, 0.8 and 0.2 percent respectively.

On the other hand, Education, and Health both declined 12.0 and 0.8 percent in that order.

Graph 3: Percentage change of Division over same month Previous year November 2023



Source : Samoa Bureau of Statistics

Imported Goods Component

The Imported goods component of the CPI registered an increase of 6.1 percent when compared to the same month last year. This rise was mainly due to higher prices recorded for onion, milk, coke and potatoes.

Local Goods Component

The increase in prices for taro, fresh fish, koko Samoa, green banana, tomato, ta'amu and meals have resulted in the 6.5 percent increase in the local goods component.

Changes by Division / Group

Food and Non-Alcoholic Beverages Index

The increase of 12.6 percent in the Food & Non-Alcoholic Beverages index was influenced by higher prices recorded for chicken leg quarter (up 16.5%), rice prepacked (up 18.0%), fresh fish (up 30.3%), onion (up 38.2%), devondale milk (up 23.2%), coke (up 23.0%), local coffee (up 15.7%), potatoes (up 26.6%), apple (up 18.0%), koko Samoa (up 21.0%), green banana (up to 20.9%), cucumber (up 14.5%), tomato (up 17.0%), taro (up 50.6%), coconut (up 12.4%) and ta'amu (up 91.3%).

Miscellaneous Goods and Services Index

The 5.8 percent rise in the Miscellaneous Goods & Services index was due to higher prices recorded for toilet soap (up 21.6%), embalming services (up 11.7%) and storage of remains (up 11.1%).

Restaurants Index

The Restaurants index recorded an increase of 5.1 percent due to the rise in prices for chicken and chips meal (up 14.5%), curry & chopsuey meal (up 6.7%) and steam rice and chicken meal (up 5.0%).

Clothing and Footwear Index

The 4.2 percent increase in the Clothing and Footwear index was a result of higher prices recorded for Nike running shoes up by 15.6%.

Furnishings, Household Equipment & Maintenance Index

The Furnishings, Household Equipment & Maintenance index rose 4.0 percent due to the increase in prices for clothing chest, mattress single, kerosene stove and Eveready AA size batteries.

Recreation and Culture Index

The Recreation and Culture index went up 2.9 percent due to the increase in the prices for laptop.

Transport

The increases in airline fares (Apia-Auckland-Apia) of 30.5% and price of brand new Ford Ranger pickup of 33.0% are reflected in the 2.6 percent increase in the Transport Index.

Alcoholic Beverages and Tobacco Index

The increase in prices for beer and whisky contributed primarily to the 0.8 percent increase in the Alcoholic Beverages and Tobacco index.

Housing, Water, Electricity, Gas and other Fuels Index

The increase in prices for paint and kerosene have led to the 0.2 percent increase in the Housing, Water, Electricity, Gas and other Fuels index.

Education

The 12.0 percent decrease in the Education index was a result of lower prices recorded for NUS registration fees (down 62.1%).

Health Index

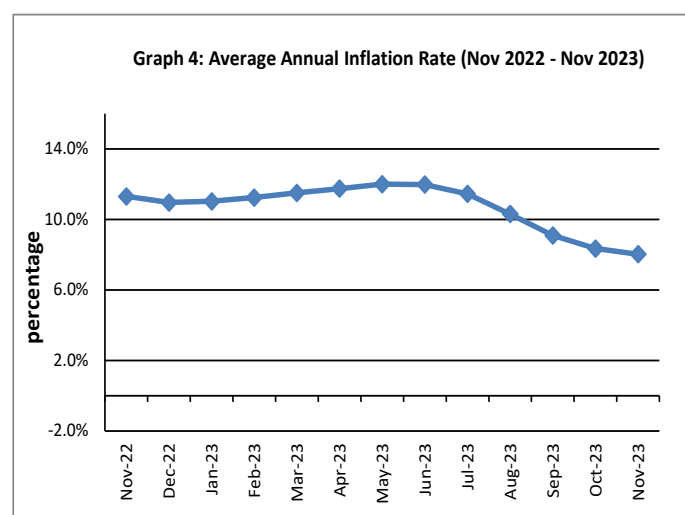
The 0.8 percent decrease in the Health Index was influenced by lower prices recorded for medicine (amoxicillin tablets).

Underlying Indices ^{1/}

The All Items Underlying Index for November 2023 registered an increase of 7.1 percent when compared to November 2022 but fell 0.6 percent when compared to October 2023. Both the Imported and Local Items Underlying Indices recorded increases of 8.5 and 4.1 percent respectively.

Annual Inflation Rate

The average annual inflation rate for the year ended November 2023 was 8.0 percent. For the twelve months ending November 2022, the inflation rate was 11.3 percent. Presented in Graph 4 is the average annual inflation rate (Nov 2022-Nov 2023).



Source : Samoa Bureau of Statistics

The attached Tables and Graphs provide the user with more detailed analysis.

Technical Notes:

The Consumer Price (CPI) measures the rate of inflation for Samoa. It is designed to measure the change in prices for the goods purchased by households in Samoa. The CPI measures the change in prices by comparing the prices for a basket of goods and services at the collection period with the price for the same goods in a base period.

The basket of goods that is priced is based on the average expenditures of households as recorded in the Household Income and Expenditure Survey (HIES). The HIES survey identifies how much households spend on different items. The more households spend on an item on average, the more important it is to the price index, and the higher the weight in the index.

^{1/} Monthly movements in the 'headline' CPI series can be volatile. This volatility reflects price changes in particular items that may be due, among other factors, to fluctuations in commodity markets and agricultural conditions, policy changes, or seasonal or infrequent price resetting.

Underlying inflation is a measure of inflation that excludes certain items that face volatile price movements. Underlying inflation eliminates products that can have temporary price shocks because these shocks can diverge from the overall trend of inflation and give a false measure of inflation.

SAMOA BUREAU OF STATISTICS

*Economic Statistics Division
FMFM II Building, Level 1
P O Box 1151
Apia, Samoa*

Phone: (685) 62014/62015

Fax: (685) 24675

E-mail: info.stats@sbs.gov.ws

Website: www.sbs.gov.ws

Date of release: 15th December 2023

The next Consumer Price Index will be released on 19th January 2024.

Table 1. CONSUMER PRICE INDEX.**(Base Period : Average Prices February 2016 = 100)**

Group	All Items	Food and Non Alcoholic Beverages	Alcoholic Beverages, Tobacco and Narcotics	Clothing and Footwear	Housing, Water, Electricity, Gas and other Fuels	Furnishings, Household Equipment, and Maintenance	Health	Transport	Communication	Recreation and Culture	Education	Restaurants	Miscellaneous goods and services
<i>Weights</i>	1000.0	403.7	128.4	21.2	119.6	30.8	4.6	148.5	51.5	6.1	19.7	22.4	43.5
Ave - 2020	106.6	110.4	120.0	93.5	89.6	98.1	99.2	104.4	104.2	88.5	114.9	109.4	98.8
Ave - 2021	109.9	114.1	121.6	98.9	92.4	98.9	105.7	111.7	107.1	88.2	109.9	111.2	97.2
Ave - 2022	122.0	131.8	122.8	108.3	93.1	105.0	101.9	131.0	124.5	91.0	109.4	126.2	102.1
2022													
November	124.6	134.3	123.4	106.9	94.6	106.6	100.0	134.9	132.0	91.8	109.4	135.1	106.0
December	124.0	134.5	123.0	107.4	94.5	106.0	100.0	131.2	132.0	91.9	109.4	135.1	105.8
2023													
January	128.2	144.5	123.6	107.6	94.4	106.1	100.0	131.1	132.0	93.3	109.4	135.1	106.9
February	129.0	149.5	123.9	107.3	93.7	106.8	100.0	124.8	132.0	93.3	96.3	135.1	107.2
March	129.8	149.0	125.5	109.9	94.2	106.4	97.6	128.0	132.0	93.3	96.3	140.1	110.9
April	131.8	154.0	123.7	110.6	94.1	106.5	97.6	129.2	132.0	95.6	96.3	140.1	111.1
May	131.5	152.3	123.8	110.8	93.4	106.7	97.6	132.2	132.0	92.3	96.3	140.1	111.8
June	133.9	157.3	122.4	111.0	96.0	106.8	98.3	134.0	132.0	92.3	96.3	140.1	111.5
July	134.0	159.5	123.2	111.0	93.0	108.8	98.3	129.1	132.0	91.2	96.3	140.1	113.3
August	132.8	156.8	123.2	110.9	92.8	108.6	96.0	128.8	132.0	90.7	96.3	141.9	113.0
September	131.8	153.2	123.6	111.3	93.1	109.8	97.1	130.5	132.0	91.8	96.3	141.9	113.1
October	132.3	152.4	124.3	111.4	93.9	109.9	99.3	135.3	132.0	92.2	96.3	141.9	112.2
November (P)	132.4	151.1	124.4	111.3	94.8	110.9	99.3	138.4	132.0	94.5	96.3	141.9	112.1
<u>Percentage Change (P)</u>													
Nov 2023													
over	6.3%	12.6%	0.8%	4.2%	0.2%	4.0%	-0.8%	2.6%	0.0%	2.9%	-12.0%	5.1%	5.8%
Nov 2022													
Nov 2023													
over	0.1%	-0.8%	0.1%	-0.1%	1.0%	0.9%	0.0%	2.3%	0.0%	2.5%	0.0%	0.0%	-0.1%
Oct 2023													

Source : Samoa Bureau Statistics

(P) : Provisional figures

Table 2. ALL ITEMS UNDERLYING INDEX

(Base Period : Average Prices February 2016 = 100)

Group	All Items	Food and Non Alcoholic Beverages	Alcoholic Beverages, Tobacco and Narcotics	Clothing and Footwear	Housing, Water, Electricity, Gas and other Fuels	Furnishings, Household Equipment, and Maintenance	Health	Transport	Communication	Recreation and Culture	Education	Restaurants	Miscellaneous goods and services
Weights	586.7	345.3	n.a	21.2	24.2	30.8	3.5	26.4	51.5	5.6	12.3	22.4	43.5
Ave - 2020	106.6	109.9		93.5	93.7	98.1	98.9	110.1	104.2	87.6	120.6	109.4	98.8
Ave - 2021	110.1	114.8		98.9	94.5	98.9	107.5	113.6	107.1	87.3	112.7	111.2	97.2
Ave - 2022	122.9	130.1		108.3	110.2	105.0	102.5	115.5	124.5	90.4	111.9	126.2	102.1
2022													
November	126.0	132.9		106.9	112.9	106.6	100.1	117.4	132.0	91.2	111.9	135.1	106.0
December	124.4	130.1		107.4	112.4	106.0	100.1	117.4	132.0	91.3	111.9	135.1	105.8
2023													
January	130.5	140.3		107.6	112.9	106.1	100.1	117.4	132.0	92.8	111.9	135.1	106.9
February	134.4	146.8		107.3	112.9	106.8	100.1	117.4	132.0	92.8	111.9	135.1	107.2
March	134.5	146.0		109.9	114.3	106.4	96.9	117.7	132.0	92.8	111.9	140.1	110.9
April	135.0	146.7		110.6	114.2	106.5	96.9	119.2	132.0	95.3	111.9	140.1	111.1
May	135.2	146.5		110.8	113.9	106.7	96.9	124.3	132.0	91.7	111.9	140.1	111.8
June	137.7	150.0		111.0	125.8	106.8	97.7	124.3	132.0	91.7	111.9	140.1	111.5
July	138.2	151.1		111.0	111.3	108.8	97.7	130.1	132.0	90.6	111.9	140.1	113.3
August	136.7	148.6		110.9	111.2	108.6	94.6	130.1	132.0	90.0	111.9	141.9	113.0
September	135.5	146.4		111.3	111.2	109.8	96.1	129.3	132.0	91.2	111.9	141.9	113.1
October	135.8	147.0		111.4	111.0	109.9	99.0	129.3	132.0	91.6	111.9	141.9	112.2
November (P)	135.1	145.5		111.3	110.3	110.9	99.0	131.0	132.0	94.1	111.9	141.9	112.1
<u>Percentage Change (P)</u>													
Nov 2023													
over	7.1%	9.4%		4.2%	-2.3%	4.0%	-1.0%	11.6%	0.0%	3.1%	0.0%	5.1%	5.8%
Nov 2022													
Nov 2023													
over	-0.6%	-1.0%		-0.1%	-0.6%	0.9%	0.0%	1.3%	0.0%	2.8%	0.0%	0.0%	-0.1%
Oct 2023													

Source : Samoa Bureau Statistics

(P) : Provisional figures

Note : n.a. Not applicable

Table 3. AVERAGE RETAIL PRICES OF SELECTED COMMODITIES

Commodities	Wt	Unit	2022			2023			Nov-23	
			Sep	Oct	Nov	Sep	Oct	Nov	% chng from prev mnth	%chng from Nov 22
01 Food and non-alcoholic beverages										
Chicken leg quarters	62.19	kg	7.20	6.61	5.16	6.11	6.10	6.01	-1.5%	16.5%
Raw Sugar	21.27	kg	3.20	3.48	3.68	4.27	4.34	4.05	-6.6%	10.0%
Bread	17.20	loaf	1.80	1.82	1.82	1.98	1.99	1.99	0.0%	9.3%
Corned Beef Oxford (a)	15.88	340 grms	9.52	9.52	10.13	11.68	11.07	10.98	-0.8%	8.4%
Taro	15.17	kg	4.13	3.81	3.57	5.62	5.18	5.38	3.9%	50.6%
Re-packed medium grain rice	13.38	kg	3.35	3.43	3.60	3.76	3.74	3.80	1.4%	5.4%
Prepacked medium grain rice (a)	13.38	907 grms	2.88	2.87	2.87	3.03	3.42	3.38	-1.0%	18.0%
Bongo	10.18	20 grms	0.90	0.87	0.92	0.92	0.92	0.92	0.0%	0.0%
Keke Saina Biscuits (a)	9.21	pkt 10	6.63	6.63	7.18	7.67	7.67	7.75	1.1%	7.9%
Ice Cream (a)	9.17	2 ltr	17.27	17.60	18.90	19.90	19.67	19.67	0.0%	4.1%
Ramen	9.00	85 grms	1.23	1.31	1.37	1.40	1.41	1.41	0.0%	3.3%
Fish (Piece)	7.92	kg	29.28	25.58	22.48	37.50	32.91	32.72	-0.6%	45.5%
Butter	7.66	454 grms	18.47	18.47	18.79	19.14	19.46	19.54	0.4%	4.0%
Round Pancake (a)	7.50	sml	0.20	0.20	0.20	0.20	0.20	0.20	0.0%	0.0%
Mutton Flaps	6.63	kg	25.48	25.55	26.30	24.74	24.08	22.46	-6.7%	-14.6%
Canned fish betw een \$3.00 and \$3.99 N/Oi	6.37	425 grms	3.32	3.34	3.32	3.47	3.57	3.76	5.3%	13.0%
Canned fish \$4:00 or over N/Oil	6.37	425 grms	4.77	4.94	4.89	5.47	5.45	5.44	-0.2%	11.2%
Canned fish betw een \$3.00 and \$3.99 N/Oi	6.37	425grms	3.18	3.21	3.19	3.29	3.26	3.26	0.0%	2.4%
Canned fish under \$3.00 in N/Oil	6.37	425 grms	2.83	2.63	2.75	2.95	2.97	2.95	-0.6%	7.3%
Turkey Wings	6.31	kg	13.30	13.63	14.63	14.33	14.37	13.91	-3.2%	-4.9%
Fish (string)	5.98	kg	15.07	13.44	13.24	18.54	18.50	15.86	-14.3%	19.8%
Fish (large)	5.98	kg	24.93	23.95	21.56	28.29	31.07	27.04	-13.0%	25.5%
Cooking vegetable oil (a)	5.89	ltr	10.86	10.84	10.12	7.61	7.61	7.64	0.4%	-24.5%
Sausage beef	5.76	kg	15.07	15.40	15.28	15.59	15.40	15.50	0.6%	1.4%
Chinese Cabbage	5.53	kg	5.21	5.87	8.46	6.87	6.91	7.33	6.1%	-13.4%
Eggs medium size	5.45	doz	7.13	7.48	7.65	7.98	8.13	8.05	-0.9%	5.3%
Flour plain w hite	5.29	kg	2.88	3.30	3.28	3.65	3.60	3.45	-4.1%	5.4%
Onions	5.23	kg	4.06	4.06	4.12	5.03	5.57	5.70	2.3%	38.2%
Milk Devondale	5.11	1ltr	4.34	4.32	4.40	5.60	5.52	5.42	-1.8%	23.2%
Soft Drink Coke	5.07	600 mls	3.10	3.10	3.11	3.80	3.82	3.82	0.2%	23.0%
Soft Drink Taxi	5.07	330 mls	1.92	1.92	1.92	1.92	1.92	1.92	0.0%	0.1%
Milk Anchor	4.81	1ltr	4.28	4.28	4.34	4.97	5.02	5.01	-0.2%	15.4%
Salted Beef	4.72	kg	22.10	22.20	22.83	23.76	23.25	23.55	1.3%	3.2%
Canned fish Soifua in Tomato Sauce	4.47	425 grms	2.46	2.54	2.54	2.65	2.78	2.78	0.0%	9.4%
CCK Coffee	4.47	100 grms	3.94	3.94	3.94	4.46	4.56	4.56	0.0%	15.7%
Sky Flakes Biscuits	4.29	850 grms	18.64	19.36	19.63	21.01	21.01	21.01	0.0%	7.1%
Stew ing beef	4.20	kg	17.39	17.51	17.01	18.90	18.90	18.90	0.0%	11.1%

Koko Samoa	4.09	cup	16.85	18.78	18.48	20.42	22.12	22.37	1.1%	21.0%
Corned Beef Pacific	3.64	340 grms	17.46	17.40	17.74	19.68	19.38	19.95	3.0%	12.5%
Ramen kimchi (bow l)	3.40	86 grms	3.38	3.51	3.53	3.47	3.43	3.40	-1.0%	-3.8%
Soy Sauce Mushroom	3.25	750 grms	3.46	3.42	3.60	3.65	3.71	3.67	-1.1%	1.9%
Pork Pig Trotter	3.10	kg	8.25	8.06	8.27	9.72	10.18	9.38	-7.9%	13.4%
Corned Beef Palm	3.01	340 grms	17.12	17.72	17.63	19.21	18.19	18.13	-0.3%	2.8%
Ripe Banana (a)	2.71	kg	4.51	4.14	4.24	4.50	4.58	4.54	-1.0%	7.1%
Tang powder (a)	2.51	25 grms	0.65	0.65	0.60	0.59	0.59	0.59	0.0%	-1.5%
Minties Pascall (a)	2.49	200 grms	12.50	12.50	12.50	12.50	12.50	12.50	0.0%	0.0%
Potatoes	2.41	kg	4.70	4.55	5.08	6.38	6.67	6.44	-3.5%	26.6%
Green Banana	2.29	kg	1.67	1.77	1.57	2.15	2.02	1.90	-5.6%	20.9%
Apple small	2.26	each	1.54	1.46	1.39	1.63	1.46	1.64	12.1%	18.0%
Mineral Water	2.25	bottle	1.87	1.87	1.87	1.91	1.91	1.91	0.0%	2.1%
Chocolate Cake (a)	2.15	sml	21.50	21.50	21.50	24.30	24.30	24.30	0.0%	13.0%
Cucumbers	2.12	kg	4.99	5.20	5.73	6.56	5.92	6.56	10.8%	14.5%
Instant Nescafe Coffee	2.02	50 grms	7.62	8.12	8.78	8.72	9.00	9.44	4.9%	7.5%
Mutton Neck	1.93	kg	25.31	27.37	26.69	22.43	20.34	20.87	2.6%	-21.8%
Vermicelli Lungken	1.88	454 grms	4.42	4.68	4.72	4.64	4.63	4.60	-0.7%	-2.6%
Tomatoes	1.80	kg	11.98	11.58	14.04	17.35	15.75	16.42	4.3%	17.0%
Sausage Pork	1.68	kg	14.52	14.91	15.16	15.39	15.20	15.20	0.0%	0.3%
Bell Tea Bags	1.62	50 grms	11.88	11.45	11.45	11.35	11.35	11.35	0.0%	-0.9%
Samco Tw isties	1.40	20 grms	0.76	0.74	0.79	0.81	0.80	0.87	8.9%	10.9%
Matured husked Coconuts	1.30	kg	1.25	1.17	1.23	1.34	1.43	1.40	-2.2%	13.6%
Matured Un husked Coconuts (a)	1.30	kg	0.85	0.79	0.73	0.96	0.90	0.81	-9.4%	11.2%
Taamu	1.13	kg	12.01	11.27	7.80	13.31	7.27	14.93	105.4%	91.3%
Round Cabbage Round	1.12	kg	7.90	7.10	8.43	9.13	8.26	8.62	4.3%	2.2%

02 Alcoholic beverages, tobacco and narcotics

Beer Vailima Lager	37.94	355 mls	3.80	3.80	3.80	3.80	3.80	3.80	0.0%	0.0%
Pall Mall Filter Cigarettes (Red)	24.29	20 rolls	14.60	14.60	14.60	15.00	15.00	15.00	0.0%	2.7%
Pall Mall Menthol Cigarettes (Green)	24.29	20 rolls	14.60	14.60	14.60	14.60	15.00	15.00	0.0%	2.7%
Beer Taula (a)	16.26	330 mls	3.68	3.66	3.68	4.38	4.38	4.38	0.0%	19.0%
Tobacco w infield (a)	12.64	30 grms	15.00	15.00	15.00	10.20	10.33	10.43	1.0%	-30.5%
Vodka Niu Spirit (a)	3.76	Niu / 2 ltr	66.82	66.82	66.82	66.78	66.78	66.78	0.0%	0.0%
Whisky Jim Bean Spirit (a)	3.76	1ltr	91.75	91.88	91.88	100.88	104.63	104.63	0.0%	13.9%
Paper Cigarettes	3.61	50 sheets	1.70	1.70	1.70	1.90	1.80	1.80	0.0%	5.9%
Samoan kava	1.82	pkt	42.67	42.46	42.50	41.33	39.51	40.65	2.9%	-4.4%

03 Clothing and footwear

Uniform le Faitaga College boys	4.28	size 8-10	38.33	38.33	38.33	39.00	39.00	39.00	0.0%	1.7%
Uniform Pa'ave (a)	3.71	size 7	42.67	42.67	42.67	45.00	45.00	45.00	0.0%	5.5%
Jandals soft	2.48	10.5 size	9.28	9.50	9.10	9.50	9.75	9.75	0.0%	7.1%
Puletasi mamanu palama (a)	2.35	medium	125.00	125.00	125.00	130.00	130.00	128.75	-1.0%	3.0%
le solosolo cotton print	2.22	42 inch	12.10	12.10	11.75	12.92	12.33	12.37	0.3%	5.2%
Cargo shorts (a)	1.76	38 size	93.00	93.00	93.00	93.00	93.00	93.00	0.0%	0.0%
Shirt short sleeves men Aloha shirt (a)	1.15	men / XL	55.60	56.85	56.85	62.10	59.98	59.98	0.0%	5.5%
Shirt long sleeves men	1.15	16.5 size	37.75	37.75	37.75	38.38	39.50	39.63	0.3%	5.0%
Shoes Nike Running shoes (a)	0.82	size 9	258.50	258.50	224.75	259.75	259.75	259.75	0.0%	15.6%
le Faitaga	0.70	36/38 size	35.80	38.05	38.05	38.13	38.69	38.38	-0.8%	0.9%
Woman Nylon Panties	0.59	medium	5.00	5.00	5.00	4.42	4.42	4.42	0.0%	-11.7%

04 Housing, water, electricity, gas and other fuels

Electricity Cashpower	50.59	kwh	0.58	0.58	0.58	0.58	0.58	0.58	0.0%	0.9%
Reservoir treated Water	28.55	15-40 m3	1.34	1.34	1.34	1.34	1.34	1.34	0.0%	0.0%
Liquid gas	15.77	9kg	72.05	71.80	71.80	69.00	69.00	69.00	0.0%	-3.9%
Government house Rent	12.16	2 b/room	680.00	680.00	680.00	680.00	680.00	680.00	0.0%	0.0%
Kerosene	4.12	1 ltr	3.68	3.58	3.58	2.87	3.29	3.83	16.3%	6.8%
Paint High gloss white	3.45	4 ltrs	83.75	84.42	83.75	87.00	87.00	87.00	0.0%	3.9%
Paint Plus 2 plastic white	3.45	4 ltrs	48.00	47.20	49.80	54.40	54.40	54.40	0.0%	9.2%
Cement NZ or Australia	0.78	40 kg	45.31	45.17	45.77	39.57	38.41	35.41	-7.8%	-22.6%
Dressed per Timber 2x4	0.71	meter	10.89	10.75	11.01	11.13	11.08	10.40	-6.1%	-5.5%

05 Furnishings, household equipment and routine household maintenance

Washing powder (a)	6.27	200 grms	1.96	2.02	2.01	2.08	2.08	2.08	0.0%	3.3%
Washing Soap yellow	5.90	bar	3.45	3.42	3.42	3.53	3.49	3.51	0.5%	2.7%
Mosquito coil	4.36	10 coil	1.55	1.58	1.55	1.50	1.50	1.50	0.0%	-3.2%
Mattress single Futon (a)	3.81	4 inch	159.83	159.83	146.50	171.00	171.00	180.33	5.5%	23.1%
Babysitting live-in (a)	3.78	1 week	142.50	142.50	142.50	142.50	142.50	142.50	0.0%	0.0%
Refridgerator common brand	2.49	331-335 ltr	2402.52	2402.52	2362.52	2401.32	2401.32	2401.32	0.0%	1.6%
Gold Power washing powder	1.68	180 grms	1.67	1.67	1.67	1.67	1.67	1.67	0.0%	0.0%
Eveready AA size Batteries	1.20	AA 1/4 size	3.84	3.70	3.70	4.21	4.21	4.21	0.0%	13.9%
Bush knife tramontina	0.88	24 inch	29.61	29.86	29.86	30.49	33.11	33.11	0.0%	10.9%
Kerosene stove	0.16	2 burner	112.50	112.50	112.50	128.75	128.75	128.75	0.0%	14.4%
Tumblers Glass basic no design (a)	0.11	medium	17.46	16.66	16.66	15.96	15.96	15.34	-3.9%	-7.9%
Sefe 3 shelves	0.11	48*48 inch	695.00	720.00	740.00	762.50	762.50	790.00	3.6%	6.8%
Clothing chest flat top	0.01	medium	595.00	620.00	607.50	732.50	732.50	762.50	4.1%	25.5%

06 Health

Amoxicillin 500mg tablets (a)	2.46	20 tablets	8.23	7.73	7.90	7.65	7.77	7.77	0.0%	-1.7%
Hospital Charge	1.15	per night	22.50	22.50	22.50	22.50	22.50	22.50	0.0%	0.0%
Private Doctor Consultation fee	1.04	per adult	30.00	30.00	30.00	30.00	30.00	30.00	0.0%	0.0%

07 Transport

Petrol	60.80	1 ltr	3.74	3.51	3.51	3.20	3.43	3.52	2.4%	0.1%
Taxi Fare P.O to Motootua Hosp	8.15	per trip	4.80	4.80	4.80	4.80	4.80	4.80	0.0%	0.0%
Taxi Fares P.O to Malua	8.15	per trip	31.30	31.30	31.30	31.30	31.30	31.30	0.0%	0.0%
Taxi Fares P.O to Falefa	8.15	per trip	43.20	43.20	43.20	43.20	43.20	43.20	0.0%	0.0%
Air Fares Faleolo-Pago-Faleolo	6.84	return trip	780.00	676.02	676.02	680.00	680.00	680.00	0.0%	0.6%
Air Fares Apia Auckland Apia	6.77	1 month	1828.51	1816.67	1661.54	1781.77	1715.44	2167.97	26.4%	30.5%
Car Registration (private car)	5.67	1501-2000 cc	256.00	256.00	256.00	281.60	281.60	281.60	0.0%	10.0%
Used Car Toyota Corolla (a)	5.08	1500 cc	23500.00	23500.00	23500.00	28333.33	28333.33	28333.33	0.0%	20.6%
Used Car Toyota Camry (a)	5.08	1500 cc	18000.00	18000.00	18000.00	18001.00	18000.00	18000.00	0.0%	0.0%
Diesel	4.83	1 ltr	4.09	3.99	3.99	3.28	3.68	3.83	4.0%	-4.1%
Bus Fares Apia Motootua Hosp	3.49	one adult	1.30	1.30	1.30	1.20	1.20	1.20	0.0%	-7.7%
Bus Fares Apia Malua	3.49	one adult	2.60	2.60	2.60	2.60	2.60	2.60	0.0%	0.0%
Bus Fares Apia Falefa	3.49	one adult	3.70	3.70	3.70	3.70	3.70	3.70	0.0%	0.0%
Labour charge car repair	3.38	min charge	67.00	67.00	67.00	67.00	67.00	67.00	0.0%	0.0%
New Pickup Ford Ranger Double cab (a)	3.25	3200 cc	94000.00	94000.00	94000.00	125000.00	125000.00	125000.00	0.0%	33.0%
New Pickup Toyota Hilux Double cab (a)	3.25	3200 cc	105000.00	105000.00	105000.00	118000.00	118000.00	118000.00	0.0%	12.4%
Used Mini van Toyota Noah (a)	2.42	2000 cc	22100.00	22100.00	22000.00	22666.67	22666.67	23666.67	4.4%	7.6%
Used Mini van Toyota Voxy (a)	2.42	2000 cc	22100.00	22100.00	22000.00	22666.67	22666.67	24166.67	6.6%	9.8%
Car Tyre	1.49	195/70 R(14)	182.50	187.50	197.50	212.50	212.50	217.50	2.4%	10.1%
Boat Fares Mulifanua Salelologa	1.14	one way	10.00	10.00	10.00	10.00	10.00	10.00	0.0%	0.0%
Boat Fares Apia Pago Apia	1.14	min charge	120.00	120.00	120.00	120.00	120.00	120.00	0.0%	0.0%

08 Communication

Calling per minute Rate cell phone (a)	10.02	per minute	0.59	0.59	0.55	0.55	0.55	0.55	0.0%	0.0%
Internet data bundles per mb Rate (a)	10.02	per mb	0.33	0.33	0.33	0.33	0.33	0.33	0.0%	0.0%
Calling per minute Rate cell phone (a)	10.02	per minute	0.49	0.49	0.49	0.49	0.49	0.49	0.0%	0.0%
Internet data bundles per mb Rate (a)	10.02	per mb	0.33	0.33	0.33	0.33	0.33	0.33	0.0%	0.0%
Telephone Rental	3.87	1 month	24.15	24.15	24.15	24.15	24.15	24.15	0.0%	0.0%
Prepaid Internet	3.06	30 mins	5.80	5.80	5.80	5.80	5.80	5.80	0.0%	0.0%
Telephone call NZ	1.50	3 mins	2.37	2.37	2.37	2.37	2.37	2.37	0.0%	0.0%
Telephone call USA	1.50	3 mins	2.97	2.97	2.97	2.97	2.97	2.97	0.0%	0.0%
Telephone call local	1.50	1 min	0.10	0.10	0.10	0.10	0.10	0.10	0.0%	0.0%

09 Recreation and culture

Television LCD 32" (a)	2.30	LCD 32"	869.50	869.50	839.33	757.33	754.00	804.00	6.6%	-4.2%
Exercise Book warwick	1.44	1B4	1.55	1.40	1.40	1.47	1.47	1.47	0.0%	4.8%
Laptop (a)	1.33	each	2898.60	2898.60	3516.80	3722.80	3793.80	3911.50	3.1%	11.2%
Weedkiller Graxomone/Agriquat (a)	0.56	1 ltr	51.67	51.67	51.67	51.67	51.67	51.67	0.0%	0.0%
Cinema Admission	0.41	ticket	15.00	15.00	15.00	15.00	15.00	15.00	0.0%	0.0%
News Paper Samoa Observer	0.01	each	2.50	2.50	2.50	2.50	2.50	2.50	0.0%	0.0%
News Paper Newsline	0.01	each	2.50	2.50	2.50	2.50	2.50	2.50	0.0%	0.0%

10 Education

Fees Primary PTA/registration fees (a)	7.23	Year 6	72.50	72.50	72.50	72.50	72.50	72.50	0.0%	0.0%
Fees Secondary PTA/registration fees (a)	5.11	Year 10	58.00	58.00	58.00	58.00	58.00	58.00	0.0%	0.0%
Fees Tertiary NUS registration School Fees	3.79	registration	322.00	322.00	322.00	122.00	122.00	122.00	0.0%	-62.1%
Fees Secondary Y Examination Fees (a)	3.61	Y12-13	25.50	25.50	25.50	25.50	25.50	25.50	0.0%	0.0%

11 Restaurants and hotels

Fish & Chip Meal	7.79	1 serve	11.33	11.25	11.58	11.58	11.58	11.58	0.0%	0.0%
Curry & Chopsuey Meal	4.87	1 serve	5.00	5.00	5.00	5.33	5.33	5.33	0.0%	6.7%
Chicken & Chips Meal (a)	4.87	1 serve	11.93	11.86	12.14	13.57	13.57	13.57	0.0%	11.8%
Steam rice & chicken Meal (a)	4.87	1 serve	6.67	6.67	6.67	7.00	7.00	7.00	0.0%	5.0%

12 Miscellaneous goods and services

Toilet Paper Sofan deluxe ply	8.52	250 sheets	1.19	1.20	1.21	1.26	1.23	1.23	0.0%	1.0%
Hair Gel	4.59	1124 ml	5.29	5.29	5.50	5.71	5.71	5.76	0.8%	4.7%
Storage of remains (a)	4.41	per day	60.00	60.00	60.00	66.67	66.67	66.67	0.0%	11.1%
Basic Casket (a)	4.41	each	1966.67	1966.67	1966.67	1966.67	1966.67	1966.67	0.0%	0.0%
Standard Embalming (a)	4.41	1 person	1500.00	1500.00	1500.00	1675.00	1675.00	1675.00	0.0%	11.7%
Toilet soap Protex (a)	4.38	90g	2.02	2.04	2.05	2.08	2.08	2.05	-1.3%	0.4%
Diapers Soft Love (a)	4.19	5kg-10kg	8.01	7.51	7.56	7.50	7.50	7.50	0.0%	-0.8%
Toilet soap Lux	3.87	85g	1.06	1.10	1.10	1.34	1.34	1.34	0.0%	21.6%
Paste Colgate regular flavour	3.43	140g	4.54	4.56	4.66	5.10	5.03	5.03	0.0%	8.1%
Diapers Huggies	1.30	16kg & over	39.68	39.68	39.73	42.96	42.96	42.96	0.0%	8.1%

Source : Samoa Bureau Statistics

(a) : New commodity from February 2016

(P) : Provisional figures

Note : Please note unit of conversion was in pound's (lb's) but been converted into kilograms (kg)

Table 4. IMPORTED GOODS COMPONENT OF THE CONSUMER PRICE INDEX

(Base Period : Average Prices February 2016 = 100)

	All Items	Food and Non Alcoholic Beverages	Alcoholic Beverages, Tobacco and Narcotics	Clothing and Footwear	Housing, Water, Electricity, Gas and other Fuels	Furnishings, Household Equipment and Maintenance	Health	Transport	Communication	Recreation and Culture	Education	Restaurants	Miscellaneous goods and services
<i>Weights</i>	494.7	269.1	23.8	15.2	28.3	26.9	2.5	88.6	<i>n.a</i>	5.6	<i>n.a</i>	<i>n.a</i>	34.7
<i>Ave - 2020</i>	107.9	112.2	117.1	93.2	96.0	97.7	95.8	107.4		87.6			98.0
<i>Ave - 2021</i>	114.0	118.4	118.8	100.9	99.1	98.7	108.0	119.9		87.3			95.9
<i>Ave - 2022</i>	131.5	136.3	119.2	114.6	121.9	105.7	100.9	149.1		90.4			102.0
<i>2022</i>													
<i>November</i>	133.8	138.2	119.2	114.1	126.8	107.4	97.4	152.0		91.2			106.9
<i>December</i>	130.7	134.4	119.3	114.2	126.2	106.8	97.4	147.0		91.3			106.7
<i>2023</i>													
<i>January</i>	137.9	147.5	119.6	114.3	126.0	106.9	97.4	146.6		92.8			108.0
<i>February</i>	140.2	155.5	119.5	113.8	122.8	107.6	97.4	135.6		92.8			108.5
<i>March</i>	140.7	154.0	119.9	116.6	124.8	107.2	92.9	141.2		92.8			111.9
<i>April</i>	141.1	154.6	109.9	117.3	124.7	107.3	92.9	143.3		95.3			112.1
<i>May</i>	141.5	154.5	111.0	117.5	121.5	107.6	92.9	146.4		91.7			113.1
<i>June</i>	144.2	158.4	102.4	117.8	131.7	107.6	94.1	148.7		91.7			112.7
<i>July</i>	143.2	159.8	102.3	117.8	118.7	109.9	94.1	142.4		90.6			113.4
<i>August</i>	140.8	156.4	103.2	117.7	117.9	109.7	89.7	140.1		90.0			113.0
<i>September</i>	140.1	153.4	103.2	118.0	119.3	111.0	91.8	143.8		91.2			113.1
<i>October</i>	142.1	154.1	103.3	117.8	122.7	111.2	96.0	152.2		91.6			112.0
<i>November (P)</i>	142.0	152.0	103.8	117.8	126.6	112.3	96.0	155.7		94.1			111.9
<i>Percentage Change (P)</i>													
<i>Nov 2023</i>													
<i>over</i>	6.1%	10.0%	-12.9%	3.2%	-0.1%	4.6%	-1.5%	2.4%		3.1%			4.6%
<i>Nov 2022</i>													
<i>Nov 2023</i>													
<i>over</i>	-0.1%	-1.4%	0.4%	0.0%	3.2%	1.0%	0.0%	2.3%		2.8%			-0.1%
<i>Oct 2023</i>													

: Samoa Bureau Statistics

(P) : Provisional figures

Note : n.a. Not applicable

Table 5. IMPORTED ITEMS UNDERLYING INDEX

(Base Period : Average Prices February 2016 = 100)

	All Items	Food and Non Alcoholic Beverages	Alcoholic Beverages, Tobacco and Narcotics	Clothing and Footwear	Housing, Water, Electricity, Gas and other Fuels	Furnishings, Household Equipment and Maintenance	Health	Transport	Communication	Recreation and Culture	Education	Restaurants	Miscellaneous goods and services
Weights	401.2	269.1	n.a	15.2	24.2	26.9	2.5	23.0	n.a	5.6	n.a	n.a	34.7
Ave - 2020	107.6	112.2		93.2	93.7	97.7	95.8	110.4		87.6			98.0
Ave - 2021	112.3	118.4		100.9	94.5	98.7	108.0	114.4		87.3			95.9
Ave - 2022	126.8	136.3		114.6	110.2	105.7	100.9	115.7		90.4			102.0
2022													
November	128.9	138.2		114.1	112.9	107.4	97.4	117.8		91.2			106.9
December	126.2	134.4		114.2	112.4	106.8	97.4	117.8		91.3			106.7
2023													
January	135.2	147.5		114.3	112.9	106.9	97.4	117.8		92.8			108.0
February	140.7	155.5		113.8	112.9	107.6	97.4	117.8		92.8			108.5
March	140.1	154.0		116.6	114.3	107.2	92.9	118.2		92.8			111.9
April	140.7	154.6		117.3	114.2	107.3	92.9	119.9		95.3			112.1
May	141.0	154.5		117.5	113.9	107.6	92.9	125.8		91.7			113.1
June	144.4	158.4		117.8	125.8	107.6	94.1	125.8		91.7			112.7
July	145.0	159.8		117.8	111.3	109.9	94.1	132.5		90.6			113.4
August	142.6	156.4		117.7	111.2	109.7	89.7	132.5		90.0			113.0
September	140.7	153.4		118.0	111.2	111.0	91.8	131.5		91.2			113.1
October	141.1	154.1		117.8	111.0	111.2	96.0	131.5		91.6			112.0
November (P)	139.9	152.0		117.8	110.3	112.3	96.0	133.4		94.1			111.9
<u>Percentage Change (P)</u>													
Nov 2023													
over	8.5%	10.0%		3.2%	-2.3%	4.6%	-1.5%	13.3%		3.1%			4.6%
Nov 2022													
Nov 2023													
over	-0.9%	-1.4%		0.0%	-0.6%	1.0%	0.0%	1.5%		2.8%			-0.1%
Oct 2023													

Source : Samoa Bureau Statistics

(P) : Provisional figures

Note : n.a. Not applicable

Table 6. LOCAL GOODS COMPONENT OF THE CONSUMER PRICE INDEX
(Base Period : Average Prices February 2016 = 100)

Group	All Items	Food and Non Alcoholic Beverages	Alcoholic Beverages, Tobacco and Narcotics	Clothing and Footwear	Housing, Water, Electricity, Gas and other Fuels	Furnishings, Household Equipment and Maintenance	Health	Transport	Communication	Recreation and Culture	Education	Restaurants	Miscellaneous goods and services
Weights	505.3	134.6	104.6	6.0	91.3	3.9	2.2	59.9	51.5	0.4	19.7	22.4	8.8
Ave - 2020	105.3	106.8	120.7	94.2	87.6	100.3	103.0	100.1	104.2	100.0	114.9	109.4	102.3
Ave - 2021	105.9	105.6	122.2	93.8	90.3	100.3	103.0	99.6	107.1	100.0	109.9	111.2	102.3
Ave - 2022	112.6	122.8	123.6	92.1	84.2	100.6	103.0	104.3	124.5	100.0	109.4	126.2	102.3
2022													
November	115.5	126.3	124.4	88.3	84.7	101.0	103.0	109.7	132.0	100.0	109.4	135.1	102.3
December	117.5	134.6	123.9	90.1	84.7	101.0	103.0	107.8	132.0	100.0	109.4	135.1	102.3
2023													
January	118.6	138.4	124.5	90.7	84.7	100.9	103.0	108.2	132.0	100.0	109.4	135.1	102.3
February	118.0	137.5	124.9	90.7	84.7	100.9	103.0	108.9	132.0	100.0	96.3	135.1	102.3
March	119.1	139.0	126.7	93.0	84.7	101.1	103.0	108.4	132.0	100.0	96.3	140.1	107.0
April	122.8	152.7	126.8	93.6	84.7	101.1	103.0	108.4	132.0	100.0	96.3	140.1	107.0
May	121.8	147.9	126.7	93.6	84.7	101.1	103.0	111.3	132.0	100.0	96.3	140.1	107.0
June	123.9	155.1	126.9	93.6	85.0	101.2	103.0	112.1	132.0	100.0	96.3	140.1	107.0
July	124.9	158.9	128.0	93.6	85.0	101.2	103.0	109.4	132.0	100.0	96.3	140.1	113.0
August	125.0	157.5	127.7	93.6	85.0	101.2	103.0	112.2	132.0	100.0	96.3	141.9	113.0
September	123.6	152.7	128.2	94.2	85.0	101.1	103.0	110.8	132.0	100.0	96.3	141.9	113.0
October	122.7	148.9	129.0	95.1	85.0	101.1	103.0	110.4	132.0	100.0	96.3	141.9	113.0
November (P)	123.1	149.3	129.1	94.7	85.0	101.3	103.0	112.8	132.0	100.0	96.3	141.9	113.0
<u>Percentage Change (P)</u>													
Nov 2023 over Nov 2022	6.5%	18.2%	3.7%	7.3%	0.4%	0.3%	0.0%	2.8%	0.0%	0.0%	-12.0%	5.1%	10.5%
Nov 2023 over Oct 2023	0.3%	0.3%	0.0%	-0.5%	0.0%	0.2%	0.0%	2.2%	0.0%	0.0%	0.0%	0.0%	0.0%

Source : Samoa Bureau Statistics

(P) : Provisional figures

Table 7. LOCAL ITEMS UNDERLYING INDEX

(Base Period : Average Prices February 2016 = 100)

Group	All Items	Food and Non Alcoholic Beverages	Alcoholic Beverages, Tobacco and Narcotics	Clothing and Footwear	Housing, Water, Electricity, Gas and other Fuels	Furnishings, Household Equipment and Maintenance	Health	Transport	Communication	Recreation and Culture	Education	Restaurants	Miscellaneous goods and services
Weights	185.5	76.1	n.a	6.0	n.a	3.9	1.0	3.4	51.5	n.a	12.3	22.4	8.8
Ave - 2020	104.6	101.9		94.2		100.3	106.3	108.6	104.2		120.6	109.4	102.3
Ave - 2021	105.1	102.1		93.8		100.3	106.3	108.6	107.1		112.7	111.2	102.3
Ave - 2022	114.3	108.1		92.1		100.6	106.3	114.4	124.5		111.9	126.2	102.3
2022													
November	119.8	114.2		88.3		101.0	106.3	114.4	132.0		111.9	135.1	102.3
December	120.3	115.2		90.1		101.0	106.3	114.4	132.0		111.9	135.1	102.3
2023													
January	120.2	114.9		90.7		100.9	106.3	114.4	132.0		111.9	135.1	102.3
February	120.7	116.3		90.7		100.9	106.3	114.4	132.0		111.9	135.1	102.3
March	122.3	117.9		93.0		101.1	106.3	114.4	132.0		111.9	140.1	107.0
April	122.6	118.6		93.6		101.1	106.3	114.4	132.0		111.9	140.1	107.0
May	122.4	118.2		93.6		101.1	106.3	114.4	132.0		111.9	140.1	107.0
June	123.2	120.1		93.6		101.2	106.3	114.4	132.0		111.9	140.1	107.0
July	123.6	120.4		93.6		101.2	106.3	114.4	132.0		111.9	140.1	113.0
August	124.1	120.9		93.6		101.2	106.3	114.4	132.0		111.9	141.9	113.0
September	124.4	121.6		94.2		101.1	106.3	114.4	132.0		111.9	141.9	113.0
October	124.5	121.8		95.1		101.1	106.3	114.4	132.0		111.9	141.9	113.0
November (P)	124.6	122.2		94.7		101.3	106.3	114.4	132.0		111.9	141.9	113.0
Percentage Change (P)													
Nov 2023 over Nov 2022	4.1%	7.1%		7.3%		0.3%	0.0%	0.0%	0.0%		0.0%	5.1%	10.5%
Nov 2023 over Oct 2023	0.1%	0.4%		-0.5%		0.2%	0.0%	0.0%	0.0%		0.0%	0.0%	0.0%

Source : Samoa Bureau Statistics

(P) : Provisional figures

Note : n.a. Not applicable

Table 8. CONSUMER PRICE INDEX (AVERAGE ANNUAL INFLATION RATE).
(Base Period : Average Prices February 2016 = 100)

	All Items	Food and Non Alcoholic Beverages	Alcoholic Beverages, Tobacco and Narcotics	Clothing and Footwear	Housing, Water, Electricity, Gas and other Fuels	Furnishings, Household Equipment, and Maintenance	Health	Transport	Communication	Recreation and Culture	Education	Restaurants	Miscellaneous goods and services
Weights	1000.0	403.7	128.4	21.2	119.6	30.8	4.6	148.5	51.5	6.1	19.7	22.4	43.5
2019	1.0	1.0	4.1	-1.6	4.4	-1.6	3.1	-3.2	0.9	-4.2	2.8	4.4	0.0
2020	-1.6	-1.5	2.7	-0.3	-5.7	1.8	-0.9	-6.1	0.0	-0.3	1.2	5.9	1.0
2021	3.1	3.4	1.3	5.8	3.1	0.9	6.5	7.0	2.8	-0.3	-4.3	1.7	-1.6
2022	11.0	15.5	1.0	9.5	0.8	6.2	-3.6	17.3	16.2	3.2	-0.4	13.5	5.0
2022													
January	4.5	5.3	1.2	6.9	5.3	0.7	6.5	9.2	3.7	0.1	-4.7	2.0	-1.9
February	5.7	7.0	1.1	8.4	6.6	1.0	6.5	11.0	4.7	0.4	-4.3	2.4	-1.9
March	6.7	8.5	1.0	10.0	7.8	1.2	5.8	12.5	5.6	1.1	-4.0	2.7	-1.7
April	7.6	10.0	0.9	11.5	7.8	1.3	5.1	13.8	6.5	1.6	-3.6	3.0	-1.4
May	8.2	11.0	0.8	13.1	7.9	1.7	3.8	14.1	7.4	1.9	-3.2	3.4	-0.9
June	8.8	12.2	0.6	14.5	6.3	2.4	2.4	14.6	8.4	2.0	-2.8	4.5	-0.1
July	9.5	13.6	0.7	13.6	4.7	3.1	1.7	15.3	10.7	2.1	-2.4	5.6	0.7
August	10.3	14.9	0.8	12.9	3.2	3.8	1.0	16.9	13.1	2.5	-2.0	6.7	1.5
September	11.0	16.2	0.9	12.1	1.9	4.4	-0.1	17.5	15.5	2.9	-1.6	8.4	2.3
October	11.3	16.8	0.9	11.3	0.1	5.1	-1.5	17.9	15.8	2.8	-1.2	10.0	3.2
November	11.3	16.3	1.0	10.4	0.6	5.7	-2.7	18.2	16.0	3.0	-0.8	11.8	4.1
December	11.0	15.5	1.0	9.5	0.8	6.2	-3.6	17.3	16.2	3.2	-0.4	13.5	5.0
2023													
January	11.0	15.6	1.1	8.4	0.5	6.5	-4.4	16.7	16.4	3.4	0.0	14.1	6.0
February	11.2	16.2	1.2	6.9	0.6	6.6	-5.5	16.2	16.6	3.7	-1.0	14.8	6.8
March	11.5	16.9	1.3	5.5	0.6	6.5	-5.6	15.6	16.8	3.4	-2.0	15.7	7.7
April	11.7	17.7	1.4	4.3	0.5	6.5	-5.4	14.6	17.0	3.2	-3.0	16.7	8.4
May	12.0	18.5	1.4	3.0	0.3	6.6	-4.5	13.9	17.2	3.0	-4.0	17.7	9.0
June	12.0	19.1	1.3	1.9	0.8	5.9	-3.5	12.0	17.4	2.8	-5.0	17.1	9.4
July	11.5	19.0	1.2	1.8	1.1	5.3	-3.9	9.5	14.8	2.6	-6.0	16.4	9.7
August	10.3	18.2	1.1	1.7	1.1	4.6	-5.0	5.5	12.3	2.1	-7.0	15.9	9.7
September	9.1	16.6	0.9	1.7	1.3	4.1	-5.1	3.0	9.9	1.7	-8.0	14.6	9.7
October	8.3	15.5	0.9	1.6	1.8	3.4	-4.4	1.7	8.4	2.1	-9.0	13.5	9.6
November (P)	8.0	15.5	0.8	1.8	1.3	3.1	-3.9	0.7	7.2	2.1	-10.0	12.2	9.3

Source : Samoa Bureau Statistics
(P) : Provisional figures

Table 9 Consumer Price Index (Percentage change and Average Annual Inflation)

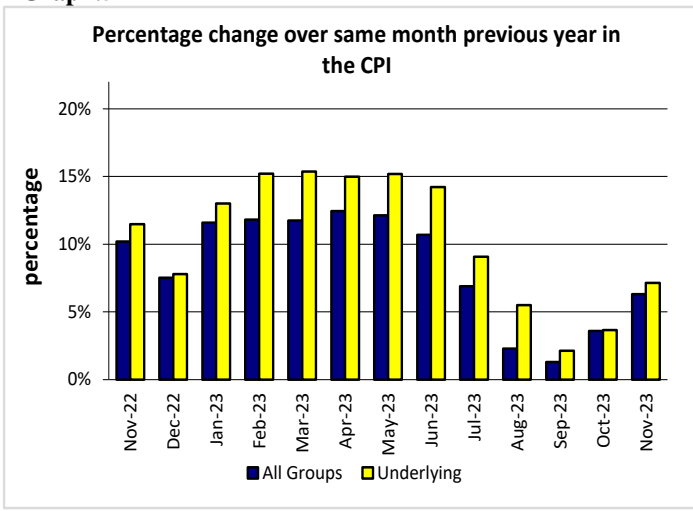
(Base Period: Average Prices February 2016 = 100)

	CPI ALL ITEMS	Percentage change over previous month	Last 12 months over previous 12 months	UNDERLYING ALL ITEMS	Percentage change over previous month	Last 12 months over previous 12 months	LOCAL COMPONENT	Percentage change over previous month	Last 12 months over previous 12 months	IMPORTED COMPONENT	Percentage change over previous month	Last 12 months over previous 12 months
2019	108.3	-	1.0	107.2	-	0.5	105.5	-	2.8	111.1	-	-0.7
2020	106.6	-	-1.6	106.6	-	-0.5	105.3	-	-0.2	107.9	-	-2.9
2021	109.9	-	3.1	110.1	-	3.2	105.9	-	0.6	114.0	-	5.7
2022	122.0	-	11.0	122.9	-	11.6	112.6	-	6.3	131.5	-	15.3
2022												
July	125.3	3.6	9.5	126.7	5.2	9.4	114.4	2.9	4.4	136.6	4.2	14.5
August	129.9	3.6	10.3	129.6	2.3	10.4	116.4	1.8	4.9	143.6	5.1	15.6
September	130.1	0.2	11.0	132.7	2.4	11.4	117.1	0.6	5.5	143.3	-0.2	16.4
October	127.7	-1.8	11.3	131.1	-1.2	11.9	115.9	-1.1	5.7	139.8	-2.4	16.6
November	124.6	-2.5	11.3	126.0	-3.8	12.0	115.5	-0.3	6.0	133.8	-4.3	16.4
December	124.0	-0.4	11.0	124.4	-1.3	11.6	117.5	1.7	6.3	130.7	-2.3	15.3
2023												
January	128.2	3.3	11.0	130.5	4.9	11.9	118.6	1.0	6.7	137.9	5.5	15.1
February	129.0	0.6	11.2	134.4	3.0	12.3	118.0	-0.5	7.1	140.2	1.6	15.1
March	129.8	0.6	11.5	134.5	0.1	12.9	119.1	0.9	7.5	140.7	0.4	15.2
April	131.8	1.6	11.7	135.0	0.4	13.4	122.8	3.1	8.2	141.1	0.2	15.1
May	131.5	-0.2	12.0	135.2	0.1	13.9	121.8	-0.8	8.7	141.5	0.3	15.0
June	133.9	1.8	12.0	137.7	1.9	14.2	123.9	1.8	9.2	144.2	1.9	14.5
July	134.0	0.0	11.5	138.2	0.4	13.7	124.9	0.8	9.4	143.2	-0.7	13.3
August	132.8	-0.9	10.3	136.7	-1.1	12.9	125.0	0.0	9.3	140.8	-1.6	11.2
September	131.8	-0.8	9.1	135.5	-0.9	11.5	123.6	-1.1	9.0	140.1	-0.5	9.2
October	132.3	0.4	8.3	135.8	0.2	10.4	122.7	-0.7	8.9	142.1	1.5	7.8
November (P)	132.4	0.1	8.0	135.1	-0.6	10.1	123.1	0.3	8.9	142.0	-0.1	7.3

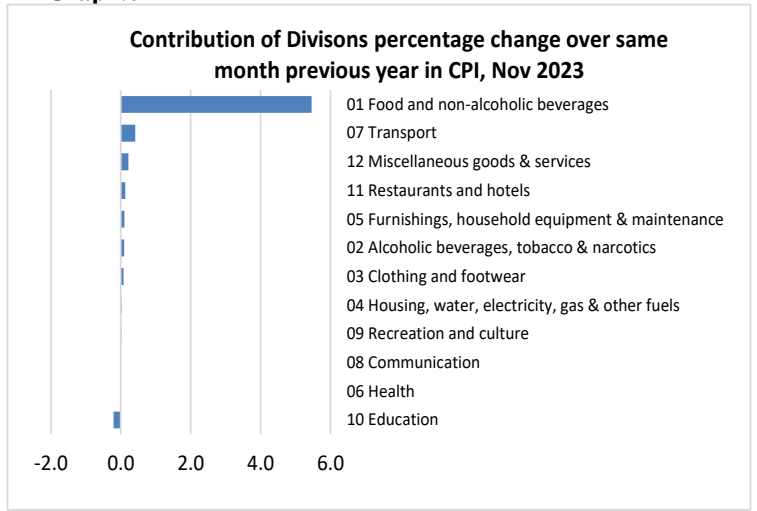
Source : Samoa Bureau Statistics

(P) : Provisional figures

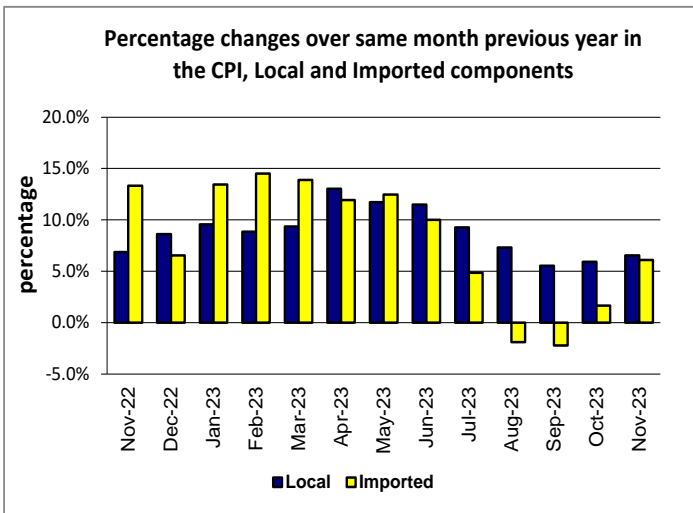
Graph.5



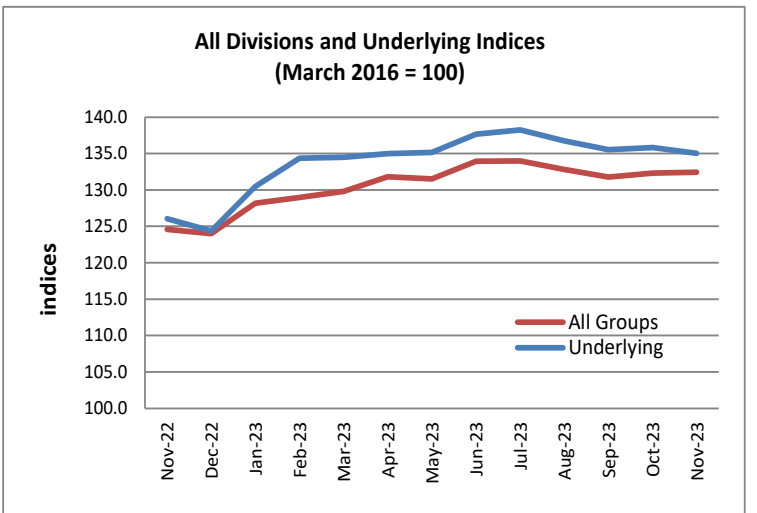
Graph.6



Graph.7



Graph.8



Graph.9

