

## SAMOA BUREAU OF STATISTICS

# CONSUMER PRICE INDEX SEPTEMBER 2023

### Key findings:

The Consumer Price Index for September 2023 increased by 1.3 percent compared to the same month of the previous year.

- The Miscellaneous Goods and Services index increased by 8.0 percent.
- The Restaurants index increased 6.1 percent.
- The Food and Non-Alcoholic Beverages index also increased by 5.3 percent.

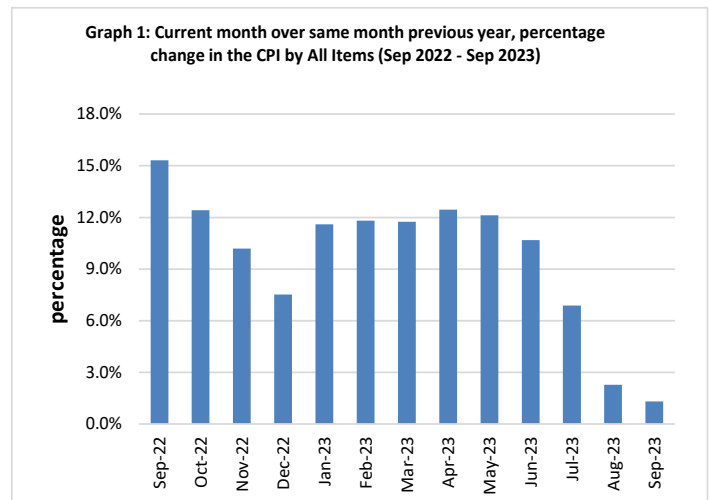
The Average Annual Inflation for the year ended September 2023 was 9.1 percent.

The CPI fell 0.8 percent from August 2023.

### SUMMARY

The Consumer Price Index (CPI) for September 2023 rose 1.3 percent compared to September 2022. This was mainly influenced by the increase in the Local goods component by 5.5 percent from the same month last year as a result of higher prices for local food, used sedan vehicle and new pickup vehicle.

The Imported goods component on the other hand fell 2.2 percent on a year-on-year (y-o-y) basis due to lower prices for imported food and fuel. Graph 1 shows the percentage changes over the same month last year in the CPI by all Divisions from September 2022 to September 2023.

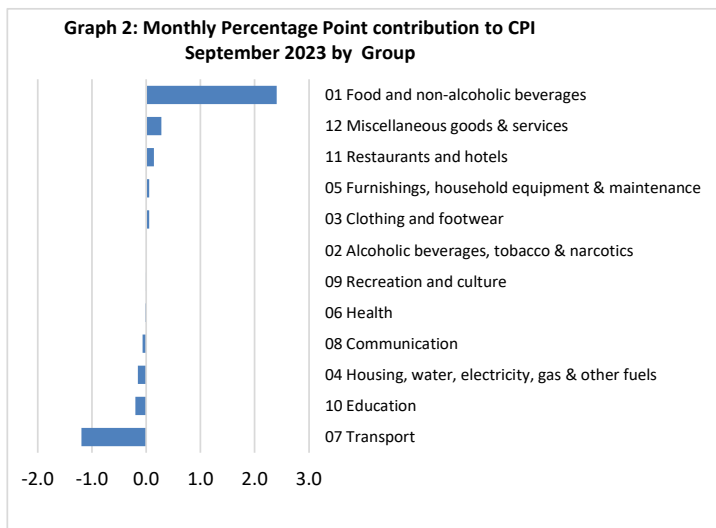


Source : Samoa Bureau of Statistics

### Total All Divisions Contribution

As shown in Graph 2, Food & Non-Alcoholic Beverages was the largest contributor to the 1.3 percent rise in the CPI in September 2023, with a contribution of 2.4 percentage-points (pp) to the overall increase in September 2023. The most significant drivers of this within the group were sugar (up 33.5%), corned beef (up 22.8%) fresh fish (up 21.5%), flour (up 26.4%), onion (up 23.9%), devondale milk (up 29.0%), coke (up 22.4%), potatoes (up 35.7%), Nescafe coffee (up 14.4%), koko Samoa (up 21.2%), Chinese cabbage (up 32.0%), green banana (up to 29.2%), cucumber (up 31.5%), round cabbage (up 15.6%), taro (up 36.0%), coconut (up 10.7%) and tomato (up 44.9%).

The next largest contributor was Miscellaneous goods and services with a contribution of 0.3 percentage-point, increasing 8.0% compared to September 2022. The main drivers of this increase were toilet soap (up 25.9%), colgate toothpaste (up 12.2%) and embalming (up 11.7%). Restaurants and hotels, Furnishings, household equipment & Maintenance and Clothing and Footwear all contributed 0.1 percentage-point to the rise in CPI due to the increases of chicken and chips meal (up 13.8%), clothing chest (up 23.1%) and shirt short sleeves aloha for men (up 11.7%).



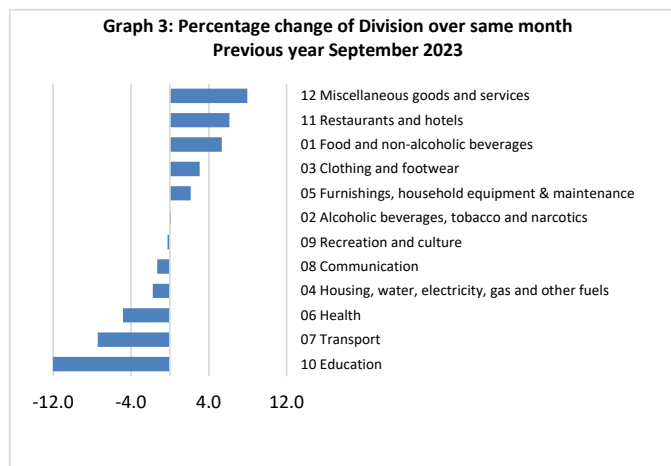
Source : Samoa Bureau of Statistics

### Consumer Price Index (% Change)

Graph 3 shows the percentage change for all Divisions (groups) in September 2023 in comparison to September 2022. Miscellaneous goods and services had the largest increase of 8.0% followed by Restaurants and Food and Non Alcoholic Beverages which rose 6.1% and 5.3% percent respectively.

Other groups such as Clothing & Footwear, Furnishing, Household Equipment & Maintenance and Alcoholic beverages tobacco and narcotics indices recorded increases of 3.1, 2.1 and 0.1 percent respectively.

On the other hand, Education, Transport, Health, Housing, Water, Electricity Gas & Other Fuel Communication and Recreation and Culture all declined by 12.0, 7.4, 4.8, 1.8, 1.3 and 0.2 percent in that order.



Source : Samoa Bureau of Statistics

### Local Goods Component

The increase in prices for local food, meals, used sedan vehicle and new pick-up vehicle have resulted in the 5.5 percent increase in the local goods component.

### Imported Goods Component

The Imported goods component of the CPI registered a decrease of 2.2 percent when compared to the same month last year. This fall was mainly due to lower prices recorded for petrol, diesel, kerosene, amoxicillin, cement and tobacco Winfield.

### Miscellaneous Goods and Services Index

The 8.0 percent rise in the Miscellaneous Goods & Services index was due to higher prices recorded for toilet soap (up 25.9%), Colgate (up 12.2%), embalming services (up 11.7%) and storage of remains (up 11.1%).

### Restaurants Index

The Restaurants index recorded an increase of 6.1 percent due to the rise in prices for chicken and chips meal (up 13.8%), curry & chopsuey meal (up 6.7%) and steam rice and chicken meal (up 5.0%).

## Food and Non-Alcoholic Beverages Index

The increase of 5.3 percent in the Food & Non-Alcoholic Beverages index was influenced by higher prices recorded for sugar (up 33.5%), corned beef (up 22.8%) fresh fish (up 21.5%), flour (up 26.4%), onion (up 23.9%), devondale milk (up 29.0%), coke (up 22.4%), potatoes (up 35.7%), Nescafe coffee (up 14.4%), koko Samoa (up 21.2%), Chinese cabbage (up 32.0%), green banana (up to 29.2%), cucumber (up 31.5%), round cabbage (up 15.6%), taro (up 36.0%), coconut (up 10.7%) and tomato (up 44.9%).

## Clothing and Footwear Index

Clothing and Footwear index rose 3.1 percent due to the increases in prices for short sleeve shirt for men (up 11.7%), ie solosolo (up 6.7%), ie faitaga (up 6.5%) and uniform (paave) increasing by 5.5%.

## Furnishings, Household Equipment & Maintenance Index

The Furnishings, Household Equipment & Maintenance index rose 2.1 percent due to the increase in prices for clothing chest, kerosene stove, glass buffet sideboard (sefe) and Eveready AA size batteries.

## Alcoholic Beverages and Tobacco Index

The increase in prices for beer and paper cigarettes contributed primarily to the 0.1 percent increase in the Alcoholic Beverages and Tobacco index.

## Education

The 12.0 percent decrease in the Education index was a result of lower prices recorded for NUS registration fees (down 62.1%).

## Transport Index

The 7.4 percent decrease in Transport was driven by the decline in prices for petrol by 14.4% and diesel by 19.8%. This more than offset the increase in prices for new pickup truck and used sedan vehicle.

## Health Index

The 4.8 percent decrease in the Health index was influenced by lower prices recorded for medicine (amoxicillin tablets).

## Housing, Water, Electricity, Gas and other Fuels Index

The decrease in prices for kerosene and cement have led to the 1.8 percent fall in the Housing, Water, Electricity, Gas and other Fuels index.

## Communication Index

The decline in price for mobile phone calling per minute (down 6.8%) was the major contributor to the 1.3 percent decrease in the Communication index.

## Recreation and Culture Index

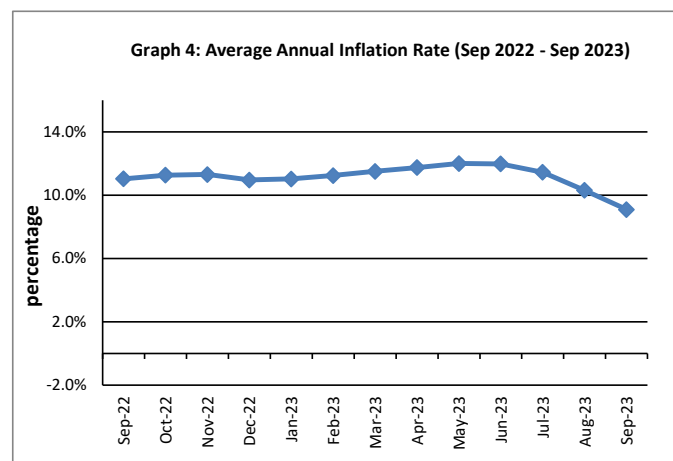
The 0.2 percent decline in the Recreation and Culture index was mainly driven by the decrease in prices for television and exercise books, offsetting the increase in the prices for laptop.

## Underlying Indices <sup>1/</sup>

The All Items Underlying Index for September 2023 registered an increase of 2.1 percent when compared to September 2022. However, it declined by 0.9 percent when compared to August 2023. Both the Imported and Local Items Underlying Indices recorded increases of 1.3 and 4.4 percent respectively.

## Inflation Rate

The average annual inflation rate for the year ended September 2023 was 9.1 percent. For the twelve months ending September 2022, the inflation rate was 11.0 percent. Presented in Graph 4 is the average annual inflation rate (Sep 2022 - Sep 2023).



Source : Samoa Bureau of Statistics

The attached Tables and Graphs provide the user with more detailed analysis.

## **Technical Notes:**

The Consumer Price (CPI) measures the rate of inflation for Samoa. It is designed to measure the change in prices for the goods purchased by households in Samoa. The CPI measures the change in prices by comparing the prices for a basket of goods and services at the collection period with the price for the same goods in a base period.

The basket of goods that is priced is based on the average expenditures of households as recorded in the Household Income and Expenditure Survey (HIES). The HIES survey identifies how much households spend on different items. The more households spend on an item on average, the more important it is to the price index, and the higher the weight in the index.

<sup>1/</sup> Monthly movements in the 'headline' CPI series can be volatile. This volatility reflects price changes in particular items that may be due, among other factors, to fluctuations in commodity markets and agricultural conditions, policy changes, or seasonal or infrequent price resetting.

Underlying inflation is a measure of inflation that excludes certain items that face volatile price movements. Underlying inflation eliminates products that can have temporary price shocks because these shocks can diverge from the overall trend of inflation and give a false measure of inflation.

### **SAMOA BUREAU OF STATISTICS**

*Economic Statistics Division  
FMFM II Building, Level 1  
P O Box 1151  
Apia, Samoa*

*Phone: (685) 62014/62015*

*Fax: (685) 24675*

*E-mail: [info.stats@sbs.gov.ws](mailto:info.stats@sbs.gov.ws)*

*Website: [www.sbs.gov.ws](http://www.sbs.gov.ws)*

*Date of release: 20<sup>th</sup> September 2023*

*The next Consumer Price Index will be released on 20<sup>th</sup> November 2023.*

**Table 1. CONSUMER PRICE INDEX.**
**(Base Period : Average Prices February 2016 = 100)**

Group	All Items	Food and Non Alcoholic Beverages	Alcoholic Beverages, Tobacco and Narcotics	Clothing and Footwear	Housing, Water, Electricity, Gas and other Fuels	Furnishings, Household Equipment, and Maintenance	Health	Transport	Communication	Recreation and Culture	Education	Restaurants	Miscellaneous goods and services
<b>Weights</b>	<b>1000.0</b>	<b>403.7</b>	<b>128.4</b>	<b>21.2</b>	<b>119.6</b>	<b>30.8</b>	<b>4.6</b>	<b>148.5</b>	<b>51.5</b>	<b>6.1</b>	<b>19.7</b>	<b>22.4</b>	<b>43.5</b>
Ave - 2020	106.6	110.4	120.0	93.5	89.6	98.1	99.2	104.4	104.2	88.5	114.9	109.4	98.8
Ave - 2021	109.9	114.1	121.6	98.9	92.4	98.9	105.7	111.7	107.1	88.2	109.9	111.2	97.2
Ave - 2022	122.0	131.8	122.8	108.3	93.1	105.0	101.9	131.0	124.5	91.0	109.4	126.2	102.1
2022													
September	130.1	145.5	123.4	108.0	94.8	107.5	102.0	140.9	133.7	92.0	109.4	133.8	104.7
October	127.7	141.9	123.4	108.5	94.5	108.0	98.9	135.3	133.7	88.6	109.4	133.2	105.1
November	124.6	134.3	123.4	106.9	94.6	106.6	100.0	134.9	132.0	91.8	109.4	135.1	106.0
December	124.0	134.5	123.0	107.4	94.5	106.0	100.0	131.2	132.0	91.9	109.4	135.1	105.8
2023													
January	128.2	144.5	123.6	107.6	94.4	106.1	100.0	131.1	132.0	93.3	109.4	135.1	106.9
February	129.0	149.5	123.9	107.3	93.7	106.8	100.0	124.8	132.0	93.3	96.3	135.1	107.2
March	129.8	149.0	125.5	109.9	94.2	106.4	97.6	128.0	132.0	93.3	96.3	140.1	110.9
April	131.8	154.0	123.7	110.6	94.1	106.5	97.6	129.2	132.0	95.6	96.3	140.1	111.1
May	131.5	152.3	123.8	110.8	93.4	106.7	97.6	132.2	132.0	92.3	96.3	140.1	111.8
June	133.9	157.3	122.4	111.0	96.0	106.8	98.3	134.0	132.0	92.3	96.3	140.1	111.5
July	134.0	159.5	123.2	111.0	93.0	108.8	98.3	129.1	132.0	91.2	96.3	140.1	113.3
August	132.8	156.8	123.2	110.9	92.8	108.6	96.0	128.8	132.0	90.7	96.3	141.9	113.0
September (P)	131.8	153.2	123.6	111.3	93.1	109.8	97.1	130.5	132.0	91.8	96.3	141.9	113.1
<b><u>Percentage Change (P)</u></b>													
Sep 2023													
over	1.3%	5.3%	0.1%	3.1%	-1.8%	2.1%	-4.8%	-7.4%	-1.3%	-0.2%	-12.0%	6.1%	8.0%
Sep 2022													
Sep 2023													
over	-0.8%	-2.3%	0.3%	0.3%	0.4%	1.1%	1.2%	1.3%	0.0%	1.2%	0.0%	0.0%	0.1%
Aug 2023													

Source : Samoa Bureau Statistics

(P) : Provisional figures

**Table 2. ALL ITEMS UNDERLYING INDEX**

(Base Period : Average Prices February 2016 = 100)

Group	All Items	Food and Non Alcoholic Beverages	Alcoholic Beverages, Tobacco and Narcotics	Clothing and Footwear	Housing, Water, Electricity, Gas and other Fuels	Furnishings, Household Equipment, and Maintenance	Health	Transport	Communication	Recreation and Culture	Education	Restaurants	Miscellaneous goods and services
<b>Weights</b>	<b>586.7</b>	<b>345.3</b>	<b>n.a</b>	<b>21.2</b>	<b>24.2</b>	<b>30.8</b>	<b>3.5</b>	<b>26.4</b>	<b>51.5</b>	<b>5.6</b>	<b>12.3</b>	<b>22.4</b>	<b>43.5</b>
Ave - 2020	106.6	109.9		93.5	93.7	98.1	98.9	110.1	104.2	87.6	120.6	109.4	98.8
Ave - 2021	110.1	114.8		98.9	94.5	98.9	107.5	113.6	107.1	87.3	112.7	111.2	97.2
Ave - 2022	122.9	130.1		108.3	110.2	105.0	102.5	115.5	124.5	90.4	111.9	126.2	102.1
2022													
September	132.7	144.1		108.0	112.6	107.5	102.6	117.1	133.7	91.4	111.9	133.8	104.7
October	131.1	141.3		108.5	112.2	108.0	98.5	117.2	133.7	87.8	111.9	133.2	105.1
November	126.0	132.9		106.9	112.9	106.6	100.1	117.4	132.0	91.2	111.9	135.1	106.0
December	124.4	130.1		107.4	112.4	106.0	100.1	117.4	132.0	91.3	111.9	135.1	105.8
2023													
January	130.5	140.3		107.6	112.9	106.1	100.1	117.4	132.0	92.8	111.9	135.1	106.9
February	134.4	146.8		107.3	112.9	106.8	100.1	117.4	132.0	92.8	111.9	135.1	107.2
March	134.5	146.0		109.9	114.3	106.4	96.9	117.7	132.0	92.8	111.9	140.1	110.9
April	135.0	146.7		110.6	114.2	106.5	96.9	119.2	132.0	95.3	111.9	140.1	111.1
May	135.2	146.5		110.8	113.9	106.7	96.9	124.3	132.0	91.7	111.9	140.1	111.8
June	137.7	150.0		111.0	125.8	106.8	97.7	124.3	132.0	91.7	111.9	140.1	111.5
July	138.2	151.1		111.0	111.3	108.8	97.7	130.1	132.0	90.6	111.9	140.1	113.3
August	136.7	148.6		110.9	111.2	108.6	94.6	130.1	132.0	90.0	111.9	141.9	113.0
September (P)	135.5	146.4		111.3	111.2	109.8	96.1	129.3	132.0	91.2	111.9	141.9	113.1

**Percentage Change (P)**

Sep 2023													
over	2.1%	1.6%		3.1%	-1.3%	2.1%	-6.4%	10.5%	-1.3%	-0.3%	0.0%	6.1%	8.0%
Sep 2022													
Sep 2023													
over	-0.9%	-1.5%		0.0%	0.0%	1.1%	1.6%	-0.6%	0.0%	1.3%	0.0%	0.0%	0.1%
Aug 2023													

Source : Samoa Bureau Statistics

(P) : Provisional figures

Note : n.a. Not applicable

**Table 3. AVERAGE RETAIL PRICES OF SELECTED COMMODITIES**

Commodities	Wt	Unit	2022			2023			Sep-23	
			Jul	Aug	Sep	Jul	Aug	Sep	% chng from prev mnth	%chng from Sep 22
<b>01 Food and non-alcoholic beverages</b>										
Chicken leg quarters	62.19	kg	6.17	6.61	7.20	6.85	6.37	6.11	-4.1%	-15.2%
Raw Sugar	21.27	kg	3.12	3.18	3.20	4.23	4.23	4.27	0.9%	33.5%
Bread	17.20	loaf	1.78	1.78	1.80	1.92	1.93	1.98	2.4%	9.8%
Corned Beef Oxford (a)	15.88	340 grms	9.02	9.02	9.52	10.90	11.68	11.68	0.0%	22.8%
Taro	15.17	kg	4.14	4.55	4.13	5.77	6.25	5.62	-10.0%	36.0%
Re-packed medium grain rice	13.38	kg	3.15	3.33	3.35	3.67	3.72	3.76	1.0%	12.2%
Prepacked medium grain rice (a)	13.38	907 grms	2.88	2.88	2.88	3.03	3.03	3.03	0.0%	5.2%
Bongo	10.18	20 grms	0.85	0.88	0.90	0.92	0.92	0.92	0.0%	2.2%
Keke Saina Biscuits (a)	9.21	pkt 10	6.29	6.46	6.63	7.29	7.67	7.67	0.0%	15.7%
Ice Cream (a)	9.17	2 ltr	17.08	17.27	17.27	20.07	20.10	19.90	-1.0%	15.2%
Ramen	9.00	85 grms	1.16	1.23	1.23	1.40	1.40	1.40	0.0%	13.5%
Fish (Piece)	7.92	kg	24.75	28.78	29.28	34.67	36.14	37.50	3.8%	28.1%
Butter	7.66	454 grms	18.47	18.47	18.47	18.94	19.14	19.14	0.0%	3.6%
Round Pancake (a)	7.50	sml	0.20	0.20	0.20	0.20	0.20	0.20	0.0%	0.0%
Mutton Flaps	6.63	kg	25.22	25.80	25.48	26.22	25.96	24.74	-4.7%	-2.9%
Canned fish betw een \$3.00 and \$3.99 N/Oi	6.37	425 grms	3.32	3.31	3.32	3.51	3.57	3.47	-2.8%	4.3%
Canned fish \$4:00 or over N/Oil	6.37	425 grms	4.74	4.76	4.77	5.36	5.41	5.47	1.1%	14.7%
Canned fish betw een \$3.00 and \$3.99 N/Oi	6.37	425grms	3.18	3.18	3.18	3.29	3.34	3.29	-1.5%	3.5%
Canned fish under \$3.00 in N/Oil	6.37	425 grms	2.85	2.85	2.83	2.90	2.90	2.95	1.7%	4.1%
Turkey Wings	6.31	kg	12.46	12.81	13.30	14.85	14.88	14.33	-3.7%	7.8%
Fish (string)	5.98	kg	11.55	14.56	15.07	18.81	18.94	18.54	-2.1%	23.0%
Fish (large)	5.98	kg	20.18	25.41	24.93	27.97	28.48	28.29	-0.7%	13.5%
Cooking vegetable oil (a)	5.89	ltr	10.75	10.70	10.86	8.25	7.94	7.61	-4.2%	-29.9%
Sausage beef	5.76	kg	15.03	15.16	15.07	15.59	15.59	15.59	0.0%	3.4%
Chinese Cabbage	5.53	kg	6.01	5.17	5.21	10.75	8.65	6.87	-20.5%	32.0%
Eggs medium size	5.45	doz	7.13	6.91	7.13	8.18	8.09	7.98	-1.3%	12.0%
Flour plain w hite	5.29	kg	2.88	2.85	2.88	3.52	3.59	3.65	1.5%	26.4%
Onions	5.23	kg	3.95	3.99	4.06	5.27	5.13	5.03	-1.9%	23.9%
Milk Devondale	5.11	1ltr	4.33	4.33	4.34	5.65	5.60	5.60	0.0%	29.0%
Soft Drink Coke	5.07	600 mls	3.10	3.08	3.10	3.81	3.78	3.80	0.5%	22.4%
Soft Drink Taxi	5.07	330 mls	1.90	1.73	1.92	1.95	1.92	1.92	0.0%	0.1%
Milk Anchor	4.81	1ltr	4.27	4.25	4.28	5.20	5.09	4.97	-2.4%	16.1%
Salted Beef	4.72	kg	22.15	22.10	22.10	22.75	22.98	23.76	3.4%	7.5%
Canned fish Soifua in Tomato Sauce	4.47	425 grms	2.44	2.46	2.46	2.63	2.66	2.65	-0.5%	7.6%
CCK Coffee	4.47	100 grms	3.94	3.94	3.94	4.46	4.46	4.46	0.0%	13.2%
Sky Flakes Biscuits	4.29	850 grms	18.64	18.64	18.64	20.50	20.50	21.01	2.5%	12.7%
Stew ing beef	4.20	kg	16.49	17.19	17.39	19.70	18.90	18.90	0.0%	8.7%



Koko Samba	4.09	cup	18.70	15.70	16.85	23.01	22.50	20.42	-9.2%	21.2%
Corned Beef Pacific	3.64	340 grms	16.85	17.35	17.46	19.68	19.68	19.68	0.0%	12.7%
Ramen kimchi (bow l)	3.40	86 grms	3.22	3.30	3.38	3.43	3.47	3.47	0.0%	2.7%
Soy Sauce Mushroom	3.25	750 grms	3.40	3.44	3.46	3.69	3.73	3.65	-2.2%	5.5%
Pork Pig Trotter	3.10	kg	8.19	8.76	8.25	9.39	9.81	9.72	-0.9%	17.7%
Corned Beef Palm	3.01	340 grms	16.69	17.12	17.12	19.21	19.21	19.21	0.0%	12.2%
Ripe Banana (a)	2.71	kg	3.70	3.77	4.51	5.08	5.13	4.50	-12.1%	0.0%
Tang pow der (a)	2.51	25 grms	0.65	0.65	0.65	0.59	0.59	0.59	0.0%	-9.7%
Minties Pascall (a)	2.49	200 grms	12.50	12.50	12.50	12.50	12.50	12.50	0.0%	0.0%
Potatoes	2.41	kg	4.58	4.55	4.70	6.65	6.60	6.38	-3.4%	35.7%
Green Banana	2.29	kg	1.47	1.60	1.67	2.30	2.16	2.15	-0.6%	29.2%
Apple small	2.26	each	1.68	1.51	1.54	1.51	1.67	1.63	-2.4%	5.7%
Mineral Water	2.25	bottle	1.54	1.87	1.87	1.84	1.84	1.91	3.6%	2.1%
Chocolate Cake (a)	2.15	sml	21.50	21.50	21.50	25.60	25.40	24.30	-4.3%	13.0%
Cucumbers	2.12	kg	5.26	4.71	4.99	8.60	7.39	6.56	-11.2%	31.5%
Instant Nescafe Coffee	2.02	50 grms	7.14	7.12	7.62	8.72	8.72	8.72	0.0%	14.4%
Mutton Neck	1.93	kg	22.89	24.85	25.31	24.44	23.35	22.43	-3.9%	-11.4%
Vermicelli Lungken	1.88	454 grms	4.29	4.34	4.42	4.68	4.68	4.64	-1.0%	5.1%
Tomatoes	1.80	kg	15.67	14.51	11.98	32.14	19.42	17.35	-10.7%	44.9%
Sausage Pork	1.68	kg	14.49	14.61	14.52	15.24	15.10	15.39	1.9%	6.0%
Bell Tea Bags	1.62	50 grms	11.36	11.18	11.88	11.35	11.35	11.35	0.0%	-4.5%
Samco Tw isties	1.40	20 grms	0.73	0.73	0.76	0.80	0.80	0.81	1.8%	7.5%
Matured husked Coconuts	1.30	kg	1.13	1.09	1.25	1.59	1.42	1.34	-5.8%	7.4%
Matured Un husked Coconuts (a)	1.30	kg	0.77	0.80	0.85	0.90	0.87	0.96	10.6%	14.1%
Taamu	1.13	kg	7.51	11.90	12.01	13.51	11.81	13.31	12.7%	10.8%
Round Cabbage Round	1.12	kg	8.84	7.13	7.90	15.47	11.00	9.13	-17.0%	15.6%

## 02 Alcoholic beverages, tobacco and narcotics

Beer Vailima Lager	37.94	355 mls	3.76	3.79	3.80	3.80	3.80	3.80	0.0%	0.0%
Pall Mall Filter Cigarettes (Red)	24.29	20 rolls	14.60	14.60	14.60	15.00	15.00	15.00	0.0%	2.7%
Pall Mall Menthol Cigarettes (Green)	24.29	20 rolls	14.60	14.60	14.60	14.60	14.60	14.60	0.0%	0.0%
Beer Taula (a)	16.26	330 mls	3.68	3.69	3.68	4.33	4.29	4.38	2.0%	19.0%
Tobacco w infield (a)	12.64	30 grms	15.00	15.00	15.00	10.00	10.20	10.20	0.0%	-32.0%
Vodka Niu Spirit (a)	3.76	Niu / 2 ltr	66.82	66.82	66.82	66.78	66.78	66.78	0.0%	0.0%
Whisky Jim Bean Spirit (a)	3.76	1ltr	91.75	91.75	91.75	100.50	100.88	100.88	0.0%	9.9%
Paper Cigarettes	3.61	50 sheets	1.70	1.70	1.70	1.90	1.90	1.90	0.0%	11.8%
Samoaan kava	1.82	pkt	39.44	43.70	42.67	42.89	40.00	41.33	3.3%	-3.1%

## 03 Clothing and footwear

Uniform le Faitaga College boys	4.28	size 8-10	38.33	38.33	38.33	39.00	39.00	39.00	0.0%	1.7%
Uniform Pa'ave (a)	3.71	size 7	42.67	42.67	42.67	45.00	45.00	45.00	0.0%	5.5%
Jandals soft	2.48	10.5 size	9.25	9.25	9.28	9.50	9.50	9.50	0.0%	2.3%
Puletasi mamanu palama (a)	2.35	medium	125.00	125.00	125.00	130.00	130.00	130.00	0.0%	4.0%
le solosolo cotton print	2.22	42 inch	12.58	12.58	12.10	12.73	12.92	12.92	0.0%	6.7%
Cargo shorts (a)	1.76	38 size	93.00	93.00	93.00	93.00	93.00	93.00	0.0%	0.0%
Shirt short sleeves men Aloha shirt (a)	1.15	men / XL	56.79	57.35	55.60	59.60	59.60	62.10	4.2%	11.7%
Shirt long sleeves men	1.15	16.5 size	37.13	37.75	37.75	38.38	38.38	38.38	0.0%	1.7%
Shoes Nike Running shoes (a)	0.82	size 9	258.50	258.50	258.50	249.75	249.75	259.75	4.0%	0.5%
le Faitaga	0.70	36/38 size	35.80	36.05	35.80	38.06	38.06	38.13	0.2%	6.5%
Woman Nylon Panties	0.59	medium	4.67	5.00	5.00	4.42	4.42	4.42	0.0%	-11.7%



#### 04 Housing, water, electricity, gas and other fuels

Electricity Cashpower	50.59	kwh	0.58	0.58	0.58	0.58	0.58	0.58	0.0%	0.9%
Reservoir treated Water	28.55	15-40 m3	1.34	1.34	1.34	1.34	1.34	1.34	0.0%	0.0%
Liquid gas	15.77	9kg	71.80	71.80	72.05	69.00	69.00	69.00	0.0%	-4.2%
Government house Rent	12.16	2 b/room	650.00	680.00	680.00	680.00	680.00	680.00	0.0%	0.0%
Kerosene	4.12	1ltr	3.53	4.36	3.68	2.79	2.70	2.87	6.3%	-22.1%
Paint High gloss w hite	3.45	4 ltrs	82.75	82.75	83.75	87.25	87.17	87.00	-0.2%	3.9%
Paint Plus 2 plastic w hite	3.45	4 ltrs	46.60	46.60	48.00	54.40	54.40	54.40	0.0%	13.3%
Cement NZ or Australia	0.78	40 kg	41.50	45.24	45.31	40.41	39.77	39.57	-0.5%	-12.7%
Dressed per Timber 2x4	0.71	meter	10.84	11.30	10.89	11.13	11.13	11.13	0.0%	2.2%

#### 05 Furnishings, household equipment and routine household maintenance

Washing powder (a)	6.27	200 grms	1.98	1.99	1.96	2.08	2.08	2.08	0.0%	6.2%
Washing Soap yellow	5.90	bar	3.43	3.47	3.45	3.33	3.44	3.53	2.6%	2.1%
Mosquito coil	4.36	10 coil	1.48	1.55	1.55	1.60	1.50	1.50	0.0%	-3.2%
Mattress single Futon (a)	3.81	4 inch	163.17	163.17	159.83	167.67	167.67	171.00	2.0%	7.0%
Babysitting live-in (a)	3.78	1week	142.50	142.50	142.50	142.50	142.50	142.50	0.0%	0.0%
Refridgerator common brand	2.49	331-335 ltr	2342.52	2342.52	2402.52	2401.32	2401.32	2401.32	0.0%	0.0%
Gold Powder washing powder	1.68	180 grms	1.67	1.67	1.67	1.67	1.67	1.67	0.0%	0.0%
Eveready AA size Batteries	1.20	AA 14 size	3.84	3.99	3.84	4.26	4.21	4.21	0.0%	9.7%
Bush knife tramontina	0.88	24 inch	29.61	29.61	29.61	28.11	28.11	30.49	8.4%	3.0%
Kerosene stove	0.16	2 burner	112.50	112.50	112.50	137.25	137.25	128.75	-6.2%	14.4%
Tumblers Glass basic no design (a)	0.11	medium	17.46	17.46	17.46	15.96	15.96	15.96	0.0%	-8.6%
Sefe 3 shelves	0.11	48*48 inch	657.50	657.50	695.00	780.00	780.00	762.50	-2.2%	9.7%
Clothing chest flat top	0.01	medium	562.50	562.50	595.00	757.50	757.50	732.50	-3.3%	23.1%

#### 06 Health

Amoxicillin 500mg tablets (a)	2.46	20 tablets	8.70	9.07	8.23	8.27	7.60	7.65	0.7%	-7.1%
Hospital Charge	1.15	per night	22.50	22.50	22.50	22.50	22.50	22.50	0.0%	0.0%
Private Doctor Consultation fee	1.04	per adult	30.00	30.00	30.00	30.00	30.00	30.00	0.0%	0.0%

#### 07 Transport

Petrol	60.80	1ltr	3.74	4.24	3.74	3.16	3.09	3.20	3.6%	-14.4%
Taxi Fare P.O to Motootua Hosp	8.15	per trip	4.80	4.80	4.80	4.80	4.80	4.80	0.0%	0.0%
Taxi Fares P.O to Malua	8.15	per trip	31.30	31.30	31.30	31.30	31.30	31.30	0.0%	0.0%
Taxi Fares P.O to Falefa	8.15	per trip	43.20	43.20	43.20	43.20	43.20	43.20	0.0%	0.0%
Air Fares Faleolo-Pago-Faleolo	6.84	return trip	676.00	676.00	780.00	680.00	680.00	680.00	0.0%	-12.8%
Air Fares Apia Auckland Apia	6.77	1month	1417.11	1819.47	1828.51	1573.44	2054.74	1781.77	-13.3%	-2.6%
Car Registration (private car)	5.67	1501-2000 cc	256.00	256.00	256.00	281.60	281.60	281.60	0.0%	10.0%
Used Car Toyota Corolla (a)	5.08	1500 cc	23500.00	23500.00	23500.00	28333.33	28333.33	28333.33	0.0%	20.6%
Used Car Toyota Camry (a)	5.08	1500 cc	18000.00	18000.00	18000.00	18001.00	18001.00	18002.00	0.0%	0.0%
Diesel	4.83	1ltr	3.98	4.69	4.09	3.16	3.10	3.28	5.8%	-19.8%
Bus Fares Apia Motootua Hosp	3.49	one adult	1.30	1.30	1.30	1.20	1.20	1.20	0.0%	-7.7%
Bus Fares Apia Malua	3.49	one adult	2.60	2.60	2.60	2.60	2.60	2.60	0.0%	0.0%
Bus Fares Apia Falefa	3.49	one adult	3.70	3.70	3.70	3.70	3.70	3.70	0.0%	0.0%
Labour charge car repair	3.38	min charge	67.00	67.00	67.00	67.00	67.00	67.00	0.0%	0.0%
New Pickup Ford Ranger Double cab (a)	3.25	3200 cc	94000.00	94000.00	94000.00	125000.00	125000.00	125000.00	0.0%	33.0%
New Pickup Toyota Hilux Double cab (a)	3.25	3200 cc	105000.00	105000.00	105000.00	118000.00	118000.00	118000.00	0.0%	12.4%
Used Mini van Toyota Noah (a)	2.42	2000 cc	19600.00	21100.00	22100.00	23333.33	23333.33	22666.67	-2.9%	2.6%
Used Mini van Toyota Voxy (a)	2.42	2000 cc	19600.00	21100.00	22100.00	23333.33	23333.33	22666.67	-2.9%	2.6%
Car Tyre	1.49	195/70 R(14)	203.75	182.50	182.50	212.50	212.50	212.50	0.0%	16.4%
Boat Fares Mulifanua Salelologa	1.14	one way	10.00	10.00	10.00	10.00	10.00	10.00	0.0%	0.0%
Boat Fares Apia Pago Apia	1.14	min charge	120.00	120.00	120.00	120.00	120.00	120.00	0.0%	0.0%

## 08 Communication

Calling per minute Rate cell phone (a)	10.02	per minute	0.59	0.59	0.59	0.55	0.55	0.55	0.0%	-6.8%
Internet data bundles per mb Rate (a)	10.02	per mb	0.33	0.33	0.33	0.33	0.33	0.33	0.0%	0.0%
Calling per minute Rate cell phone (a)	10.02	per minute	0.49	0.49	0.49	0.49	0.49	0.49	0.0%	0.0%
Internet data bundles per mb Rate (a)	10.02	per mb	0.33	0.33	0.33	0.33	0.33	0.33	0.0%	0.0%
Telephone Rental	3.87	1month	24.15	24.15	24.15	24.15	24.15	24.15	0.0%	0.0%
Prepaid Internet	3.06	30 mins	5.80	5.80	5.80	5.80	5.80	5.80	0.0%	0.0%
Telephone call NZ	1.50	3 mins	2.37	2.37	2.37	2.37	2.37	2.37	0.0%	0.0%
Telephone call USA	1.50	3 mins	2.97	2.97	2.97	2.97	2.97	2.97	0.0%	0.0%
Telephone call local	1.50	1min	0.10	0.10	0.10	0.10	0.10	0.10	0.0%	0.0%

## 09 Recreation and culture

Television LCD 32" (a)	2.30	LCD 32"	852.83	869.50	869.50	782.50	765.83	757.33	-1.1%	-12.9%
Exercise Book warwick	1.44	1B4	1.55	1.62	1.55	1.47	1.47	1.47	0.0%	-5.4%
Laptop (a)	1.33	each	2898.60	2898.60	2898.60	3522.80	3522.80	3722.80	5.7%	28.4%
Weedkiller Graxomone/Agriquat (a)	0.56	1ltr	46.67	46.67	51.67	51.67	51.67	51.67	0.0%	0.0%
Cinema Admission	0.41	ticket	15.00	15.00	15.00	15.00	15.00	15.00	0.0%	0.0%
New s Paper Samoa Observer	0.01	each	2.50	2.50	2.50	2.50	2.50	2.50	0.0%	0.0%
New s Paper New sline	0.01	each	2.50	2.50	2.50	2.50	2.50	2.50	0.0%	0.0%

## 10 Education

Fees Primary PTA/registration fees (a)	7.23	Year 6	72.50	72.50	72.50	72.50	72.50	72.50	0.0%	0.0%
Fees Secondary PTA/registration fees (a)	5.11	Year 10	58.00	58.00	58.00	58.00	58.00	58.00	0.0%	0.0%
Fees Tertiary NUS registration School Fees	3.79	registration	322.00	322.00	322.00	122.00	122.00	122.00	0.0%	-62.1%
Fees Secondary Y Examination Fees (a)	3.61	Y12-13	25.50	25.50	25.50	25.50	25.50	25.50	0.0%	0.0%

## 11 Restaurants and hotels

Fish & Chip Meal	7.79	1serve	10.92	11.00	11.33	11.58	11.58	11.58	0.0%	2.2%
Curry & Chopsuey Meal	4.87	1serve	5.00	5.00	5.00	5.33	5.33	5.33	0.0%	6.7%
Chicken & Chips Meal (a)	4.87	1serve	11.36	11.43	11.93	13.57	13.57	13.57	0.0%	13.8%
Steam rice & chicken Meal (a)	4.87	1serve	6.17	6.17	6.67	6.67	7.00	7.00	0.0%	5.0%

## 12 Miscellaneous goods and services

Toilet Paper Sofan deluxe ply	8.52	250 sheets	1.14	1.19	1.19	1.26	1.26	1.26	0.0%	6.3%
Hair Gel	4.59	124 ml	4.91	5.29	5.29	5.71	5.71	5.71	0.0%	8.1%
Storage of remains (a)	4.41	per day	60.00	60.00	60.00	66.67	66.67	66.67	0.0%	11.1%
Basic Casket (a)	4.41	each	1966.67	1966.67	1966.67	1966.67	1966.67	1966.67	0.0%	0.0%
Standard Embalming (a)	4.41	1person	1500.00	1500.00	1500.00	1675.00	1675.00	1675.00	0.0%	11.7%
Toilet soap Protex (a)	4.38	90g	2.04	2.02	2.02	2.06	2.07	2.08	0.4%	3.2%
Diapers Soft Love (a)	4.19	5kg-10kg	8.01	8.01	8.01	7.50	7.50	7.50	0.0%	-6.4%
Toilet soap Lux	3.87	85g	1.05	1.06	1.06	1.38	1.34	1.34	0.0%	25.9%
Paste Colgate regular flavour	3.43	140g	4.42	4.52	4.54	5.09	5.10	5.10	0.0%	12.2%
Diapers Huggies	1.30	16kg & over	39.68	39.68	39.68	42.51	42.51	42.96	1.0%	8.3%

Source : Samoa Bureau Statistics

(a) : New commodity from February 2016

(P) : Provisional figures

Note : Please note unit of conversion was in pound's (lb's) but been converted into kilograms (kg)

**Table 4. IMPORTED GOODS COMPONENT OF THE CONSUMER PRICE INDEX****(Base Period : Average Prices February 2016 = 100)**

	All Items	Food and Non Alcoholic Beverages	Alcoholic Beverages, Tobacco and Narcotics	Clothing and Footwear	Housing, Water, Electricity, Gas and other Fuels	Furnishings, Household Equipment and Maintenance	Health	Transport	Communication	Recreation and Culture	Education	Restaurants	Miscellaneous goods and services
<i>Weights</i>	<b>494.7</b>	<b>269.1</b>	<b>23.8</b>	<b>15.2</b>	<b>28.3</b>	<b>26.9</b>	<b>2.5</b>	<b>88.6</b>	<i>n.a</i>	<b>5.6</b>	<i>n.a</i>	<i>n.a</i>	<b>34.7</b>
Ave - 2020	107.9	112.2	117.1	93.2	96.0	97.7	95.8	107.4		87.6			98.0
Ave - 2021	114.0	118.4	118.8	100.9	99.1	98.7	108.0	119.9		87.3			95.9
Ave - 2022	131.5	136.3	119.2	114.6	121.9	105.7	100.9	149.1		90.4			102.0
2022													
September	143.3	153.2	119.1	115.1	127.4	108.4	101.1	159.3		91.4			105.4
October	139.8	149.4	119.2	115.4	126.2	109.0	95.3	152.0		87.8			105.8
November	133.8	138.2	119.2	114.1	126.8	107.4	97.4	152.0		91.2			106.9
December	130.7	134.4	119.3	114.2	126.2	106.8	97.4	147.0		91.3			106.7
2023													
January	137.9	147.5	119.6	114.3	126.0	106.9	97.4	146.6		92.8			108.0
February	140.2	155.5	119.5	113.8	122.8	107.6	97.4	135.6		92.8			108.5
March	140.7	154.0	119.9	116.6	124.8	107.2	92.9	141.2		92.8			111.9
April	141.1	154.6	109.9	117.3	124.7	107.3	92.9	143.3		95.3			112.1
May	141.5	154.5	111.0	117.5	121.5	107.6	92.9	146.4		91.7			113.1
June	144.2	158.4	102.4	117.8	131.7	107.6	94.1	148.7		91.7			112.7
July	143.2	159.8	102.3	117.8	118.7	109.9	94.1	142.4		90.6			113.4
August	140.8	156.4	103.2	117.7	117.9	109.7	89.7	140.1		90.0			113.0
September (P)	140.1	153.4	103.2	118.0	119.3	111.0	91.8	143.8		91.2			113.1

**Percentage Change (P)**

Sep 2023													
over Sep 2022	-2.2%	0.1%	-13.3%	2.5%	-6.4%	2.4%	-9.2%	-9.8%		-0.3%			7.3%
Sep-23													
over Aug 2023	-0.5%	-1.9%	0.0%	0.2%	1.2%	1.2%	2.4%	2.6%		1.3%			0.1%

Samoa Bureau Statistics

(P) : Provisional figures

Note : n.a. Not applicable

**Table 5. IMPORTED ITEMS UNDERLYING INDEX**
**(Base Period : Average Prices February 2016 = 100)**

	All Items	Food and Non Alcoholic Beverages	Alcoholic Beverages, Tobacco and Narcotics	Clothing and Footwear	Housing, Water , Electricity, Gas and other Fuels	Furnishings, Household Equipment and Maintenance	Health	Transport	Communication	Recreation and Culture	Education	Restaurants	Miscellaneous goods and services
<b>Weights</b>	<b>401.2</b>	<b>269.1</b>	<b>n.a</b>	<b>15.2</b>	<b>24.2</b>	<b>26.9</b>	<b>2.5</b>	<b>23.0</b>	<b>n.a</b>	<b>5.6</b>	<b>n.a</b>	<b>n.a</b>	<b>34.7</b>
Ave - 2020	107.6	112.2		93.2	93.7	97.7	95.8	110.4		87.6			98.0
Ave - 2021	112.3	118.4		100.9	94.5	98.7	108.0	114.4		87.3			95.9
Ave - 2022	126.8	136.3		114.6	110.2	105.7	100.9	115.7		90.4			102.0
2022													
September	139.0	153.2		115.1	112.6	108.4	101.1	117.5		91.4			105.4
October	136.4	149.4		115.4	112.2	109.0	95.3	117.6		87.8			105.8
November	128.9	138.2		114.1	112.9	107.4	97.4	117.8		91.2			106.9
December	126.2	134.4		114.2	112.4	106.8	97.4	117.8		91.3			106.7
2023													
January	135.2	147.5		114.3	112.9	106.9	97.4	117.8		92.8			108.0
February	140.7	155.5		113.8	112.9	107.6	97.4	117.8		92.8			108.5
March	140.1	154.0		116.6	114.3	107.2	92.9	118.2		92.8			111.9
April	140.7	154.6		117.3	114.2	107.3	92.9	119.9		95.3			112.1
May	141.0	154.5		117.5	113.9	107.6	92.9	125.8		91.7			113.1
June	144.4	158.4		117.8	125.8	107.6	94.1	125.8		91.7			112.7
July	145.0	159.8		117.8	111.3	109.9	94.1	132.5		90.6			113.4
August	142.6	156.4		117.7	111.2	109.7	89.7	132.5		90.0			113.0
September (P)	140.7	153.4		118.0	111.2	111.0	91.8	131.5		91.2			113.1
<b><u>Percentage Change (P)</u></b>													
Sep 2023													
over	1.3%	0.1%		2.5%	-1.3%	2.4%	-9.2%	11.9%		-0.3%			7.3%
Sep 2022													
Sep 2023													
over	-1.3%	-1.9%		0.2%	0.0%	1.2%	2.4%	-0.7%		1.3%			0.1%
Aug 2023													

Source : Samoa Bureau Statistics

(P) : Provisional figures

Note : n.a. Not applicable

**Table 6. LOCAL GOODS COMPONENT OF THE CONSUMER PRICE INDEX**

**(Base Period : Average Prices February 2016 = 100)**

Group	All Items	Food and Non Alcoholic Beverages	Alcoholic Beverages, Tobacco and Narcotics	Clothing and Footwear	Housing, Water , Electricity, Gas and other Fuels	Furnishings, Household Equipment and Maintenance	Health	Transport	Communication	Recreation and Culture	Education	Restaurants	Miscellaneous goods and services
<b>Weights</b>	<b>505.3</b>	<b>134.6</b>	<b>104.6</b>	<b>6.0</b>	<b>91.3</b>	<b>3.9</b>	<b>2.2</b>	<b>59.9</b>	<b>51.5</b>	<b>0.4</b>	<b>19.7</b>	<b>22.4</b>	<b>8.8</b>
Ave - 2020	105.3	106.8	120.7	94.2	87.6	100.3	103.0	100.1	104.2	100.0	114.9	109.4	102.3
Ave - 2021	105.9	105.6	122.2	93.8	90.3	100.3	103.0	99.6	107.1	100.0	109.9	111.2	102.3
Ave - 2022	112.6	122.8	123.6	92.1	84.2	100.6	103.0	104.3	124.5	100.0	109.4	126.2	102.3
2022													
September	117.1	129.9	124.4	89.8	84.7	100.8	103.0	113.7	133.7	100.0	109.4	133.8	102.3
October	115.9	126.7	124.3	91.1	84.7	100.9	103.0	110.6	133.7	100.0	109.4	133.2	102.3
November	115.5	126.3	124.4	88.3	84.7	101.0	103.0	109.7	132.0	100.0	109.4	135.1	102.3
December	117.5	134.6	123.9	90.1	84.7	101.0	103.0	107.8	132.0	100.0	109.4	135.1	102.3
2023													
January	118.6	138.4	124.5	90.7	84.7	100.9	103.0	108.2	132.0	100.0	109.4	135.1	102.3
February	118.0	137.5	124.9	90.7	84.7	100.9	103.0	108.9	132.0	100.0	96.3	135.1	102.3
March	119.1	139.0	126.7	93.0	84.7	101.1	103.0	108.4	132.0	100.0	96.3	140.1	107.0
April	122.8	152.7	126.8	93.6	84.7	101.1	103.0	108.4	132.0	100.0	96.3	140.1	107.0
May	121.8	147.9	126.7	93.6	84.7	101.1	103.0	111.3	132.0	100.0	96.3	140.1	107.0
June	123.9	155.1	126.9	93.6	85.0	101.2	103.0	112.1	132.0	100.0	96.3	140.1	107.0
July	124.9	158.9	128.0	93.6	85.0	101.2	103.0	109.4	132.0	100.0	96.3	140.1	113.0
August	125.0	157.5	127.7	93.6	85.0	101.2	103.0	112.2	132.0	100.0	96.3	141.9	113.0
September (P)	123.6	152.8	128.2	94.2	85.0	101.1	103.0	110.8	132.0	100.0	96.3	141.9	113.0
<b><u>Percentage Change (P)</u></b>													
Sep 2023 over Sep 2022	5.5%	17.6%	3.0%	4.9%	0.4%	0.3%	0.0%	-2.6%	-1.3%	0.0%	-12.0%	6.1%	10.5%
Sep 2023 over Aug 2023	-1.1%	-3.0%	0.4%	0.6%	0.0%	-0.1%	0.0%	-1.3%	0.0%	0.0%	0.0%	0.0%	0.0%

Source : Samoa Bureau Statistics

(P) : Provisional figures

**Table 7. LOCAL ITEMS UNDERLYING INDEX**
**(Base Period : Average Prices February 2016 = 100)**

Group	All Items	Food and Non Alcoholic Beverages	Alcoholic Beverages, Tobacco and Narcotics	Clothing and Footwear	Housing, Water , Electricity, Gas and other Fuels	Furnishings, Household Equipment and Maintenance	Health	Transport	Communication	Recreation and Culture	Education	Restaurants	Miscellaneous goods and services
<b>Weights</b>	<b>185.5</b>	<b>76.1</b>	<b>n.a</b>	<b>6.0</b>	<b>n.a</b>	<b>3.9</b>	<b>1.0</b>	<b>3.4</b>	<b>51.5</b>	<b>n.a</b>	<b>12.3</b>	<b>22.4</b>	<b>8.8</b>
Ave - 2020	104.6	101.9		94.2		100.3	106.3	108.6	104.2		120.6	109.4	102.3
Ave - 2021	105.1	102.1		93.8		100.3	106.3	108.6	107.1		112.7	111.2	102.3
Ave - 2022	114.3	108.1		92.1		100.6	106.3	114.4	124.5		111.9	126.2	102.3
2022													
September	119.2	111.8		89.8		100.8	106.3	114.4	133.7		111.9	133.8	102.3
October	119.5	112.7		91.1		100.9	106.3	114.4	133.7		111.9	133.2	102.3
November	119.8	114.2		88.3		101.0	106.3	114.4	132.0		111.9	135.1	102.3
December	120.3	115.2		90.1		101.0	106.3	114.4	132.0		111.9	135.1	102.3
2023													
January	120.2	114.9		90.7		100.9	106.3	114.4	132.0		111.9	135.1	102.3
February	120.7	116.3		90.7		100.9	106.3	114.4	132.0		111.9	135.1	102.3
March	122.3	117.9		93.0		101.1	106.3	114.4	132.0		111.9	140.1	107.0
April	122.6	118.6		93.6		101.1	106.3	114.4	132.0		111.9	140.1	107.0
May	122.4	118.2		93.6		101.1	106.3	114.4	132.0		111.9	140.1	107.0
June	123.2	120.1		93.6		101.2	106.3	114.4	132.0		111.9	140.1	107.0
July	123.6	120.4		93.6		101.2	106.3	114.4	132.0		111.9	140.1	113.0
August	124.1	120.9		93.6		101.2	106.3	114.4	132.0		111.9	141.9	113.0
September (P)	124.4	121.6		94.2		101.1	106.3	114.4	132.0		111.9	141.9	113.0
<b><u>Percentage Change (P)</u></b>													
Sep 2023 over Sep 2022	4.4%	8.8%		4.9%		0.3%	0.0%	0.0%	-1.3%		0.0%	6.1%	10.5%
Sep 2023 over Aug 2023	0.2%	0.6%		0.6%		-0.1%	0.0%	0.0%	0.0%		0.0%	0.0%	0.0%
Source : Samoa Bureau Statistics													
(P) : Provisional figures													
Note : n.a. Not applicable													



**Table 8. CONSUMER PRICE INDEX (AVERAGE ANNUAL INFLATION RATE).**

**(Base Period : Average Prices February 2016 = 100)**

	All Items	Food and Non Alcoholic Beverages	Alcoholic Beverages, Tobacco and Narcotics	Clothing and Footwear	Housing, Water, Electricity, Gas and other Fuels	Furnishings, Household Equipment, and Maintenance	Health	Transport	Communication	Recreation and Culture	Education	Restaurants	Miscellaneous goods and services
<b>Weights</b>	<b>1000.0</b>	<b>403.7</b>	<b>128.4</b>	<b>21.2</b>	<b>119.6</b>	<b>30.8</b>	<b>4.6</b>	<b>148.5</b>	<b>51.5</b>	<b>6.1</b>	<b>19.7</b>	<b>22.4</b>	<b>43.5</b>
2019	1.0	1.0	4.1	-1.6	4.4	-1.6	3.1	-3.2	0.9	-4.2	2.8	4.4	0.0
2020	-1.6	-1.5	2.7	-0.3	-5.7	1.8	-0.9	-6.1	0.0	-0.3	1.2	5.9	1.0
2021	3.1	3.4	1.3	5.8	3.1	0.9	6.5	7.0	2.8	-0.3	-4.3	1.7	-1.6
2022	11.0	15.5	1.0	9.5	0.8	6.2	-3.6	17.3	16.2	3.2	-0.4	13.5	5.0
2022													
January	4.5	5.3	1.2	6.9	5.3	0.7	6.5	9.2	3.7	0.1	-4.7	2.0	-1.9
February	5.7	7.0	1.1	8.4	6.6	1.0	6.5	11.0	4.7	0.4	-4.3	2.4	-1.9
March	6.7	8.5	1.0	10.0	7.8	1.2	5.8	12.5	5.6	1.1	-4.0	2.7	-1.7
April	7.6	10.0	0.9	11.5	7.8	1.3	5.1	13.8	6.5	1.6	-3.6	3.0	-1.4
May	8.2	11.0	0.8	13.1	7.9	1.7	3.8	14.1	7.4	1.9	-3.2	3.4	-0.9
June	8.8	12.2	0.6	14.5	6.3	2.4	2.4	14.6	8.4	2.0	-2.8	4.5	-0.1
July	9.5	13.6	0.7	13.6	4.7	3.1	1.7	15.3	10.7	2.1	-2.4	5.6	0.7
August	10.3	14.9	0.8	12.9	3.2	3.8	1.0	16.9	13.1	2.5	-2.0	6.7	1.5
September	11.0	16.2	0.9	12.1	1.9	4.4	-0.1	17.5	15.5	2.9	-1.6	8.4	2.3
October	11.3	16.8	0.9	11.3	0.1	5.1	-1.5	17.9	15.8	2.8	-1.2	10.0	3.2
November	11.3	16.3	1.0	10.4	0.6	5.7	-2.7	18.2	16.0	3.0	-0.8	11.8	4.1
December	11.0	15.5	1.0	9.5	0.8	6.2	-3.6	17.3	16.2	3.2	-0.4	13.5	5.0
2023													
January	11.0	15.6	1.1	8.4	0.5	6.5	-4.4	16.7	16.4	3.4	0.0	14.1	6.0
February	11.2	16.2	1.2	6.9	0.6	6.6	-5.5	16.2	16.6	3.7	-1.0	14.8	6.8
March	11.5	16.9	1.3	5.5	0.6	6.5	-5.6	15.6	16.8	3.4	-2.0	15.7	7.7
April	11.7	17.7	1.4	4.3	0.5	6.5	-5.4	14.6	17.0	3.2	-3.0	16.7	8.4
May	12.0	18.5	1.4	3.0	0.3	6.6	-4.5	13.9	17.2	3.0	-4.0	17.7	9.0
June	12.0	19.1	1.3	1.9	0.8	5.9	-3.5	12.0	17.4	2.8	-5.0	17.1	9.4
July	11.5	19.0	1.2	1.8	1.1	5.3	-3.9	9.5	14.8	2.6	-6.0	16.4	9.7
August	10.3	18.2	1.1	1.7	1.1	4.6	-5.0	5.5	12.3	2.1	-7.0	15.9	9.7
September (P)	9.1	16.6	0.9	1.7	1.3	4.1	-5.1	3.0	9.9	1.7	-8.0	14.6	9.7

Source : Samoa Bureau Statistics

(P) : Provisional figures

**Table 9 Consumer Price Index (Percentage change and Average Annual Inflation)**

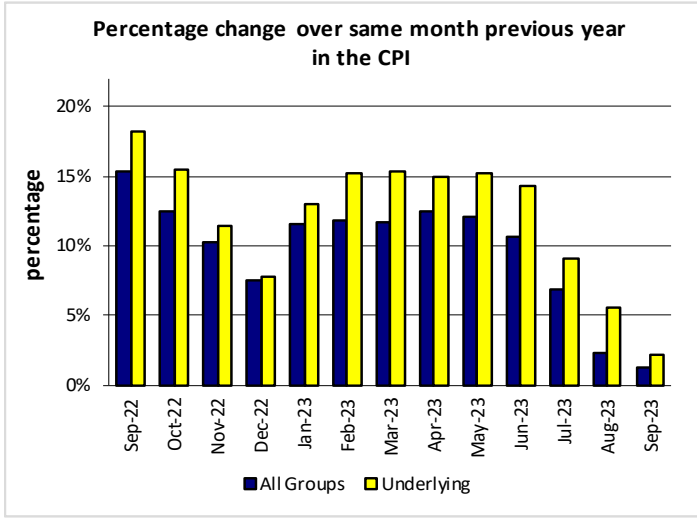
(Base Period: Average Prices February 2016 = 100)

	<b>CPI ALL ITEMS</b>	Percentage change over previous month	Last 12 months over previous 12 months	<b>UNDERLYING ALL ITEMS</b>	Percentage change over previous month	Last 12 months over previous 12 months	<b>LOCAL COMPONENT</b>	Percentage change over previous month	Last 12 months over previous 12 months	<b>IMPORTED COMPONENT</b>	Percentage change over previous month	Last 12 months over previous 12 months
2019	108.3	-	1.0	107.2	-	0.5	105.5	-	2.8	111.1	-	-0.7
2020	106.6	-	-1.6	106.6	-	-0.5	105.3	-	-0.2	107.9	-	-2.9
2021	109.9	-	3.1	110.1	-	3.2	105.9	-	0.6	114.0	-	5.7
2022	122.0	-	11.0	122.9	-	11.6	112.6	-	6.3	131.5	-	15.3
2022												
July	125.3	3.6	9.5	126.7	5.2	9.4	114.4	2.9	4.4	136.6	4.2	14.5
August	129.9	3.6	10.3	129.6	2.3	10.4	116.4	1.8	4.9	143.6	5.1	15.6
September	130.1	0.2	11.0	132.7	2.4	11.4	117.1	0.6	5.5	143.3	-0.2	16.4
October	127.7	-1.8	11.3	131.1	-1.2	11.9	115.9	-1.1	5.7	139.8	-2.4	16.6
November	124.6	-2.5	11.3	126.0	-3.8	12.0	115.5	-0.3	6.0	133.8	-4.3	16.4
December	124.0	-0.4	11.0	124.4	-1.3	11.6	117.5	1.7	6.3	130.7	-2.3	15.3
2023												
January	128.2	3.3	11.0	130.5	4.9	11.9	118.6	1.0	6.7	137.9	5.5	15.1
February	129.0	0.6	11.2	134.4	3.0	12.3	118.0	-0.5	7.1	140.2	1.6	15.1
March	129.8	0.6	11.5	134.5	0.1	12.9	119.1	0.9	7.5	140.7	0.4	15.2
April	131.8	1.6	11.7	135.0	0.4	13.4	122.8	3.1	8.2	141.1	0.2	15.1
May	131.5	-0.2	12.0	135.2	0.1	13.9	121.8	-0.8	8.7	141.5	0.3	15.0
June	133.9	1.8	12.0	137.7	1.9	14.2	123.9	1.8	9.2	144.2	1.9	14.5
July	134.0	0.0	11.5	138.2	0.4	13.7	124.9	0.8	9.4	143.2	-0.7	13.3
August	132.8	-0.9	10.3	136.7	-1.1	12.9	125.0	0.0	9.3	140.8	-1.6	11.2
September (P)	131.8	-0.8	9.1	135.5	-0.9	11.5	123.6	-1.1	9.0	140.1	-0.5	9.2

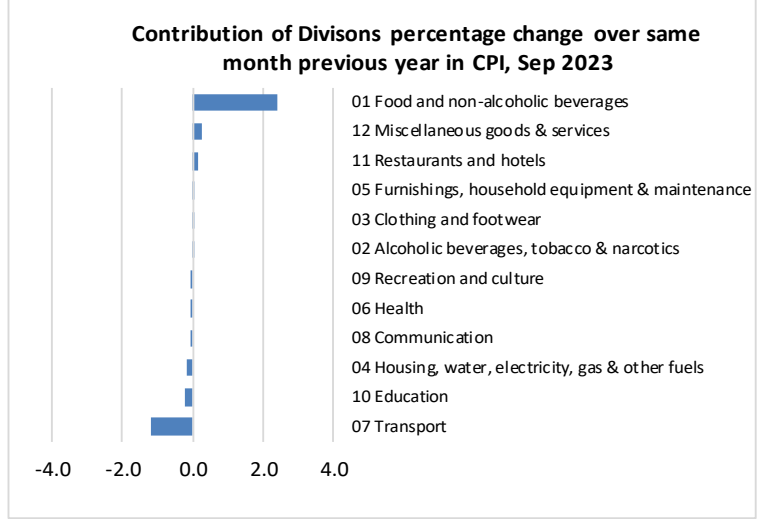
Source : Samoa Bureau Statistics

(P) : Provisional figures

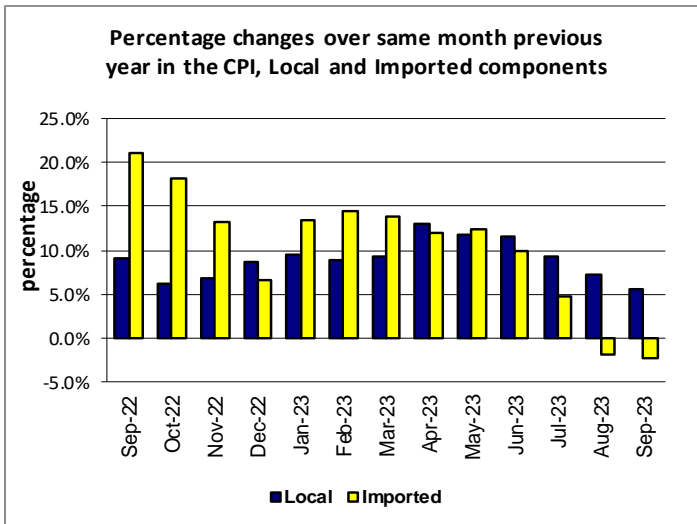
**Graph.5**



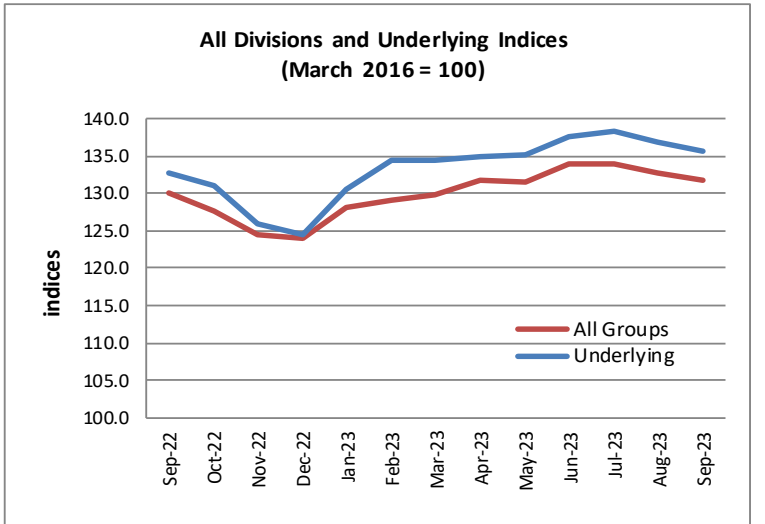
**Graph.6**



**Graph.7**



**Graph.8**



**Graph.9**

